

Data Path : Z:\pestpcbsrv\HPCHEM1\ECD_0\Data\P0092419\
 Data File : P0061321.D
 Signal(s) : Signal #1: ECD1A.CH Signal #2: ECD2B.CH
 Acq On : 24 Sep 2019 15:06
 Operator : SM/AJ
 Sample : K5008-07MSD
 Misc :
 ALS Vial : 14 Sample Multiplier: 1

Instrument :
 ECD_0
 ClientSampleId :
 SB-7MSD

Integration File signal 1: autoint1.e
 Integration File signal 2: autoint2.e
 Quant Time: Sep 25 02:39:18 2019
 Quant Method : Z:\pestpcbsrv\HPCHEM1\ECD_0\methods\P0091319.M
 Quant Title : GC EXTRACTABLES
 QLast Update : Sat Sep 14 00:06:36 2019
 Response via : Initial Calibration
 Integrator: ChemStation 6890 Scale Mode: Small noise peaks clipped

Volume Inj. : 2 µl
 Signal #1 Phase : ZB-MR1 Signal #2 Phase: ZB-MR2
 Signal #1 Info : 30Mx0.32mmx 0.50µ Signal #2 Info : 30M x 0.32mm x 0.25µm

Compound	RT#1	RT#2	Resp#1	Resp#2	ng/ml	ng/ml

System Monitoring Compounds						
1) SA Tetrachlo...	4.372	3.530	660636	541935	17.957	19.409
2) SA Decachlor...	10.040	8.406	753803	544456	16.406	15.533
Target Compounds						
3) L1 AR-1016-1	5.536	4.584	370312	290304	231.713	234.828
4) L1 AR-1016-2	5.559	4.602	527277	397767	230.317	233.798
5) L1 AR-1016-3	5.621	4.772	327963	223506	228.453	230.545
6) L1 AR-1016-4	5.719	4.814	268158	185467	227.335	226.587
7) L1 AR-1016-5	6.011	5.020	276065	237241	220.226	226.512
8) L2 AR-1221-1	4.579	3.737	24695	25081	56.262	70.854 #
9) L2 AR-1221-2	4.667	3.821	38924	36378	113.960	129.439
10) L2 AR-1221-3	4.744	3.895	155839	133434	147.128	160.751
11) L3 AR-1232-1	4.744	3.895	155839	133434	133.564	146.414
12) L3 AR-1232-2	5.270	4.602	234238	397767	361.261	393.959
13) L3 AR-1232-3	5.559	4.772	527277	223506	393.681	398.264
14) L3 AR-1232-4	5.719	4.854	268158	227933	390.251	436.469
15) L3 AR-1232-5	5.808	5.020	243500	237241	444.674	419.204
16) L4 AR-1242-1	5.536	4.584	370312	290304	310.296	318.881
17) L4 AR-1242-2	5.559	4.602	527277	397767	308.512	317.741
18) L4 AR-1242-3	5.621	4.772	327963	223506	302.861	312.790
19) L4 AR-1242-4	5.719	4.854	268158	227933	303.758	312.992
20) L4 AR-1242-5	6.453	5.363	44355	200038	39.578	202.079 #
21) L5 AR-1248-1	5.536	4.584	370312	290304	402.251	409.296
22) L5 AR-1248-2	5.808	4.814	243500	185467	182.090	191.956
23) L5 AR-1248-3	6.011	4.854	276065	227933	182.408	226.320
24) L5 AR-1248-4	6.414	5.020	51367	237241	28.195	197.548 #
25) L5 AR-1248-5	6.453	5.403	44355	34120	25.351	26.990
26) L6 AR-1254-1	6.387	5.363	233245	200038	121.063	97.062
27) L6 AR-1254-2	6.604	5.508	270779	199116	86.046	105.518
28) L6 AR-1254-3	6.971	5.917	141192	355627	40.089	111.849 #
29) L6 AR-1254-4	7.256	6.126	96628	45783	35.695	21.990 #
30) L6 AR-1254-5	7.673	6.536	890970	670385	302.145	211.819 #
31) L7 AR-1260-1	7.133	6.030	613641	482860	252.049	229.562
32) L7 AR-1260-2	7.390	6.215	734405	577498	242.911	223.880
33) L7 AR-1260-3	7.748	6.365	480275	541421	201.252	224.836
34) L7 AR-1260-4	7.972	6.830	596274	389275	213.131	181.883
35) L7 AR-1260-5	8.287	7.069	1028809	821646	188.934	170.026
36) L8 AR-1262-1	7.748	6.575	480275	416954	135.966	139.594
37) L8 AR-1262-2	8.287	7.069	1028809	821646	165.020	158.025
38) L8 AR-1262-3	8.605	7.349	678440	171276	159.225	80.698 #
39) L8 AR-1262-4	8.659	7.410	395847	597192	121.410	156.354 #
40) L8 AR-1262-5	9.316	7.900	214344	172482	105.413	103.049
41) L9 AR-1268-1	8.605	7.349	678440	171276	91.924	29.218 #
42) L9 AR-1268-2	8.659	7.410	395847	597192	58.600	112.044 #

Data Path : Z:\pestpcbsrv\HPCHEM1\ECD_0\Data\P0092419\
 Data File : P0061321.D
 Signal(s) : Signal #1: ECD1A.CH Signal #2: ECD2B.CH
 Acq On : 24 Sep 2019 15:06
 Operator : SM/AJ
 Sample : K5008-07MSD
 Misc :
 ALS Vial : 14 Sample Multiplier: 1

Instrument :
 ECD_0
 ClientSampleId :
 SB-7MSD

Integration File signal 1: autoint1.e
 Integration File signal 2: autoint2.e
 Quant Time: Sep 25 02:39:18 2019
 Quant Method : Z:\pestpcbsrv\HPCHEM1\ECD_0\methods\P0091319.M
 Quant Title : GC EXTRACTABLES
 QLast Update : Sat Sep 14 00:06:36 2019
 Response via : Initial Calibration
 Integrator: ChemStation 6890 Scale Mode: Small noise peaks clipped

Volume Inj. : 2 µl
 Signal #1 Phase : ZB-MR1 Signal #2 Phase: ZB-MR2
 Signal #1 Info : 30Mx0.32mmx 0.50µ Signal #2 Info : 30M x 0.32mm x 0.25µm

	Compound	RT#1	RT#2	Resp#1	Resp#2	ng/ml	ng/ml
43)	L9 AR-1268-3	8.901	7.615	34823	17364	6.201	3.917 #
44)	L9 AR-1268-4	9.316	7.900	214344	172482	92.921	90.264
45)	L9 AR-1268-5	9.715	8.171	72058	61211	4.543	5.087

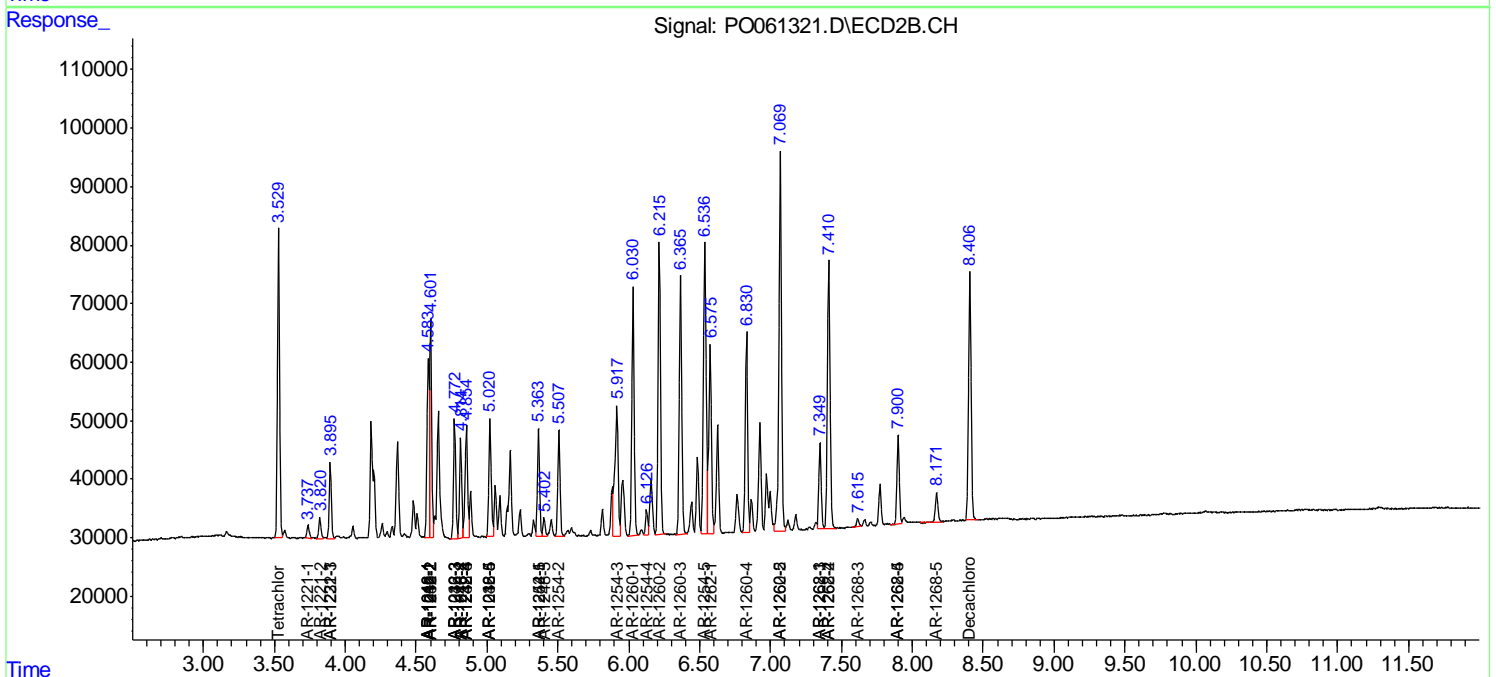
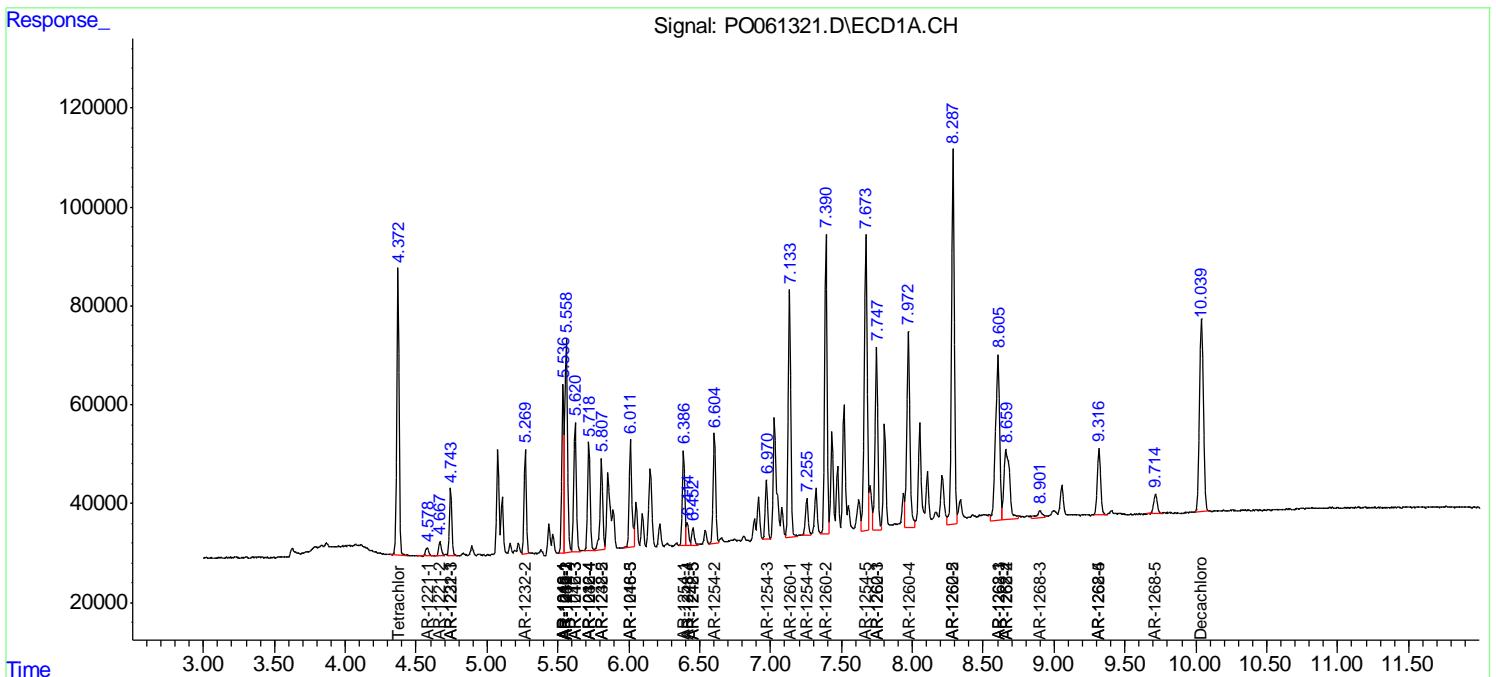
(f)=RT Delta > 1/2 Window (#)=Amounts differ by > 25% (m)=manual int.

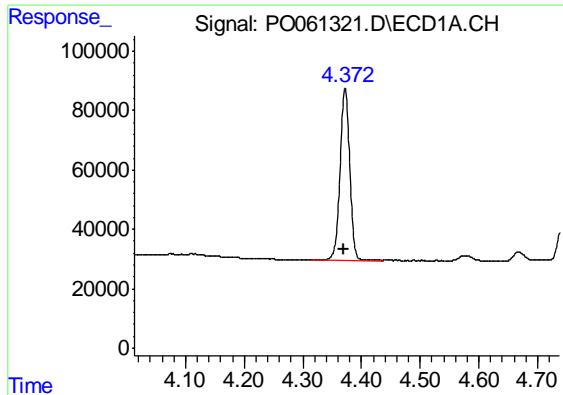
Data Path : Z:\pestpcbsrv\HPCHEM1\ECD_O\Data\PO092419\
 Data File : PO061321.D
 Signal(s) : Signal #1: ECD1A.CH Signal #2: ECD2B.CH
 Acq On : 24 Sep 2019 15:06
 Operator : SM/AJ
 Sample : K5008-07MSD
 Misc :
 ALS Vial : 14 Sample Multiplier: 1

Instrument :
 ECD_O
 ClientSampled :
 SB-7MSD

Integration File signal 1: autoint1.e
 Integration File signal 2: autoint2.e
 Quant Time: Sep 25 02:39:18 2019
 Quant Method : Z:\pestpcbsrv\HPCHEM1\ECD_O\methods\PO091319.M
 Quant Title : GC EXTRACTABLES
 QLast Update : Sat Sep 14 00:06:36 2019
 Response via : Initial Calibration
 Integrator: ChemStation 6890 Scale Mode: Small noise peaks clipped

Volume Inj. : 2 µl
 Signal #1 Phase : ZB-MR1 Signal #2 Phase: ZB-MR2
 Signal #1 Info : 30Mx0.32mmx 0.50µ Signal #2 Info : 30M x 0.32mm x 0.25µm

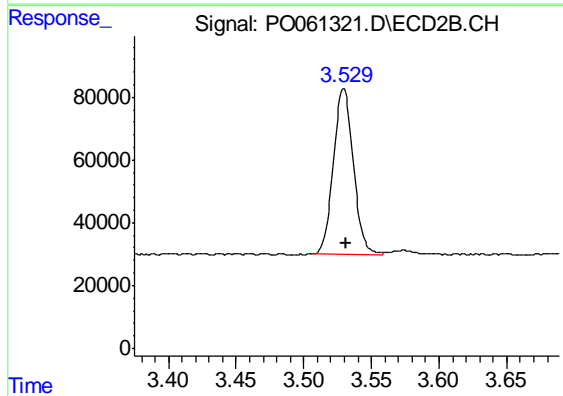




#1 Tetrachloro-m-xylene

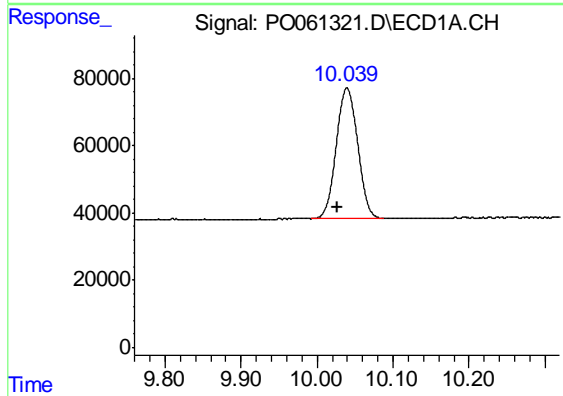
R.T.: 4.372 min
 Delta R.T.: 0.002 min
 Response: 660636
 Conc: 17.96 ng/ml

Instrument :
 ECD_O
 ClientSampleId :
 SB-7MSD



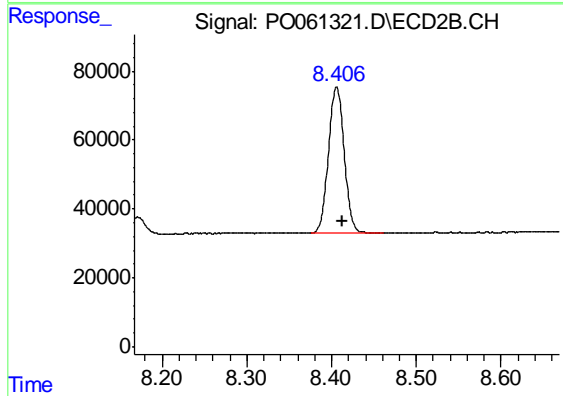
#1 Tetrachloro-m-xylene

R.T.: 3.530 min
 Delta R.T.: -0.002 min
 Response: 541935
 Conc: 19.41 ng/ml



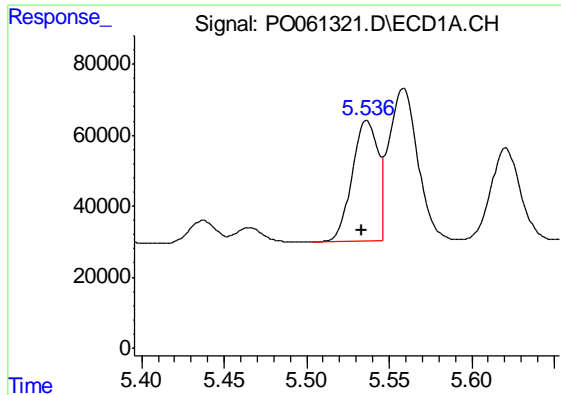
#2 Decachlorobiphenyl

R.T.: 10.040 min
 Delta R.T.: 0.012 min
 Response: 753803
 Conc: 16.41 ng/ml



#2 Decachlorobiphenyl

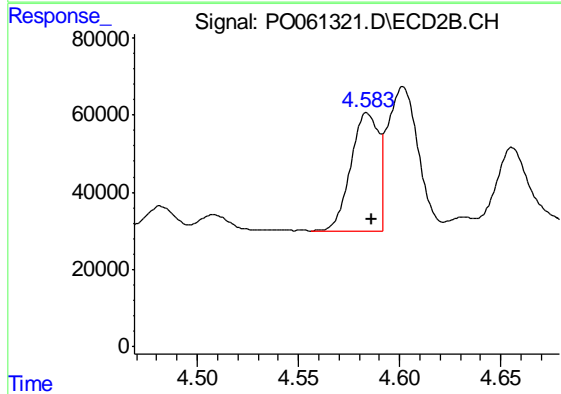
R.T.: 8.406 min
 Delta R.T.: -0.007 min
 Response: 544456
 Conc: 15.53 ng/ml



#3 AR-1016-1

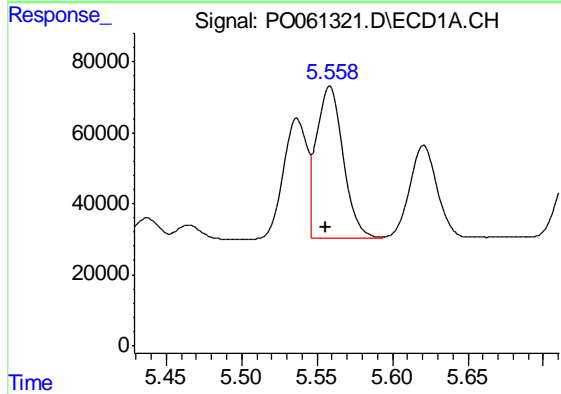
R.T.: 5.536 min
 Delta R.T.: 0.003 min
 Response: 370312
 Conc: 231.71 ng/ml

Instrument :
 ECD_O
 ClientSampleId :
 SB-7MSD



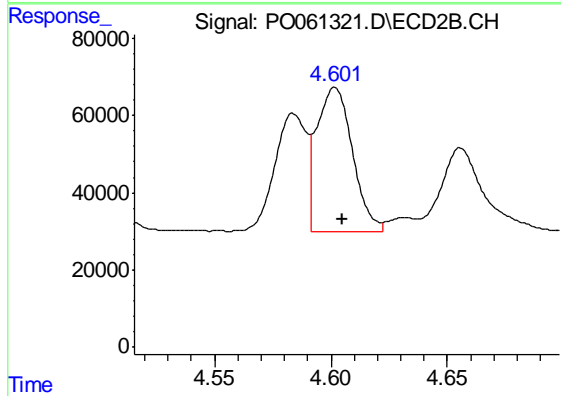
#3 AR-1016-1

R.T.: 4.584 min
 Delta R.T.: -0.002 min
 Response: 290304
 Conc: 234.83 ng/ml



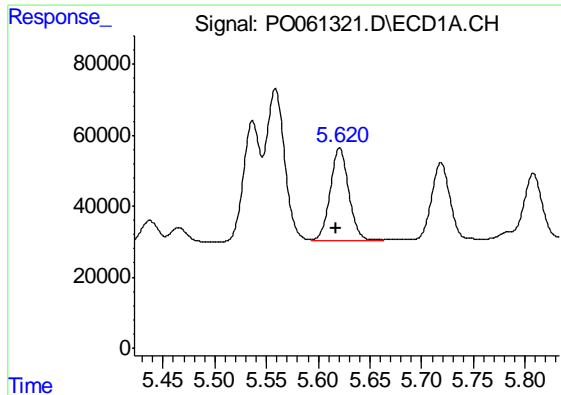
#4 AR-1016-2

R.T.: 5.559 min
 Delta R.T.: 0.003 min
 Response: 527277
 Conc: 230.32 ng/ml



#4 AR-1016-2

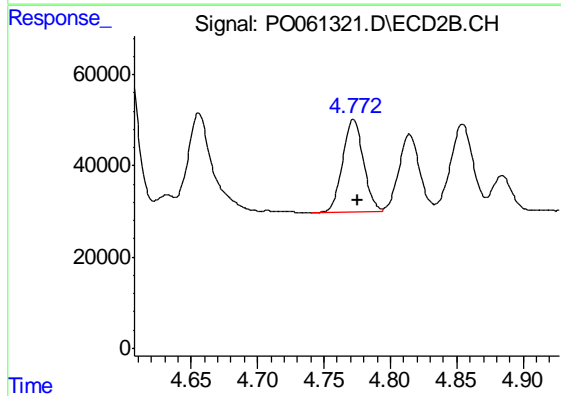
R.T.: 4.602 min
 Delta R.T.: -0.003 min
 Response: 397767
 Conc: 233.80 ng/ml



#5 AR-1016-3

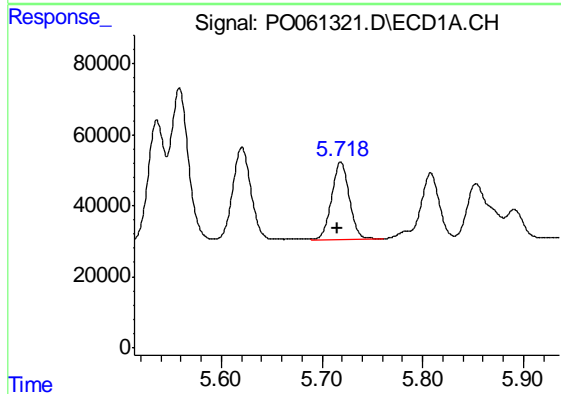
R.T.: 5.621 min
 Delta R.T.: 0.003 min
 Response: 327963
 Conc: 228.45 ng/ml

Instrument :
 ECD_O
 ClientSampleId :
 SB-7MSD



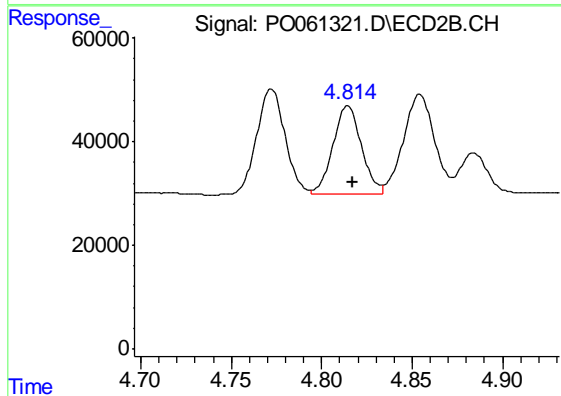
#5 AR-1016-3

R.T.: 4.772 min
 Delta R.T.: -0.003 min
 Response: 223506
 Conc: 230.54 ng/ml



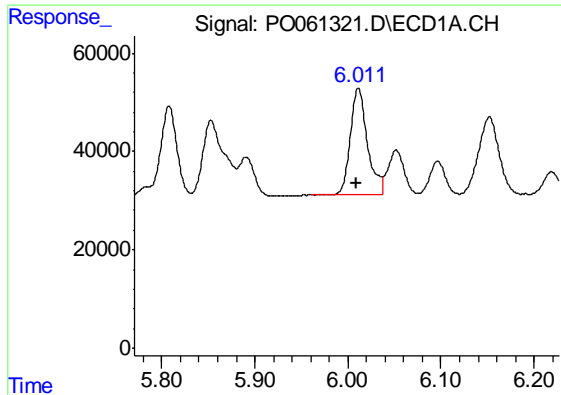
#6 AR-1016-4

R.T.: 5.719 min
 Delta R.T.: 0.003 min
 Response: 268158
 Conc: 227.34 ng/ml



#6 AR-1016-4

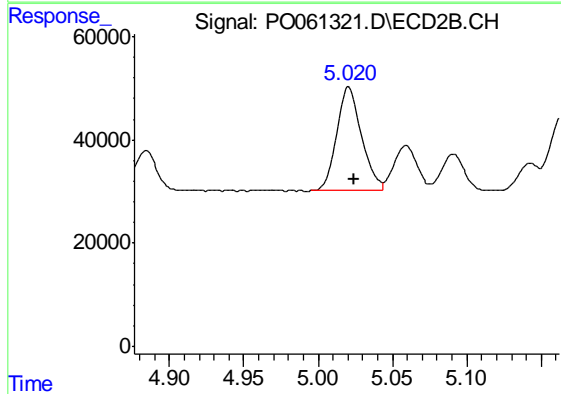
R.T.: 4.814 min
 Delta R.T.: -0.003 min
 Response: 185467
 Conc: 226.59 ng/ml



#7 AR-1016-5

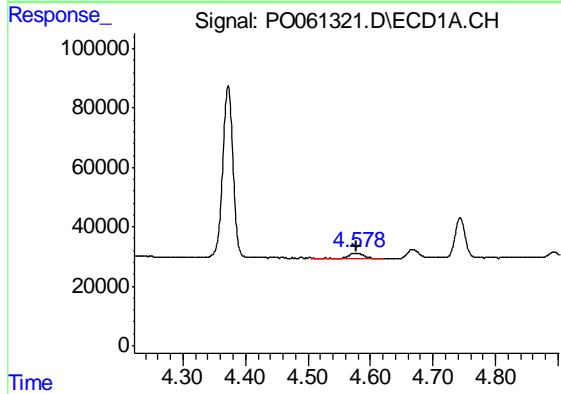
R.T.: 6.011 min
 Delta R.T.: 0.003 min
 Response: 276065
 Conc: 220.23 ng/ml

Instrument :
 ECD_O
 ClientSampleId :
 SB-7MSD



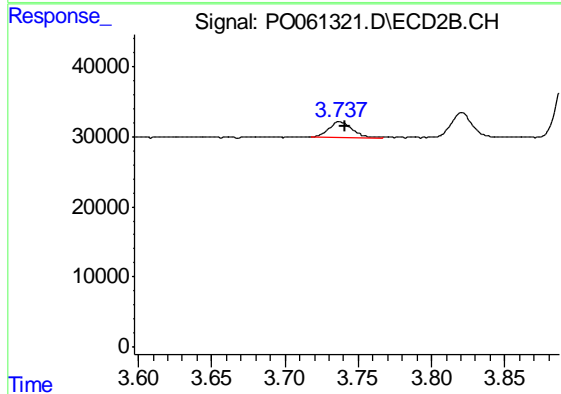
#7 AR-1016-5

R.T.: 5.020 min
 Delta R.T.: -0.004 min
 Response: 237241
 Conc: 226.51 ng/ml



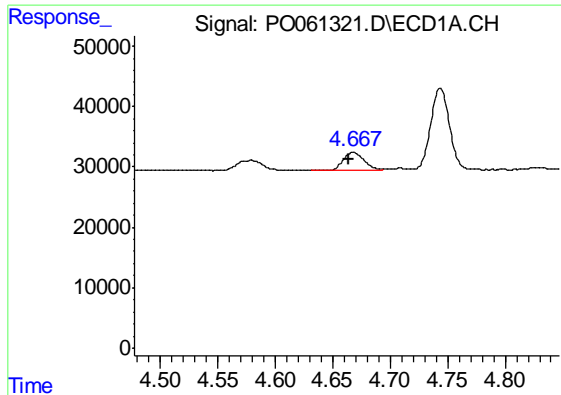
#8 AR-1221-1

R.T.: 4.579 min
 Delta R.T.: 0.000 min
 Response: 24695
 Conc: 56.26 ng/ml



#8 AR-1221-1

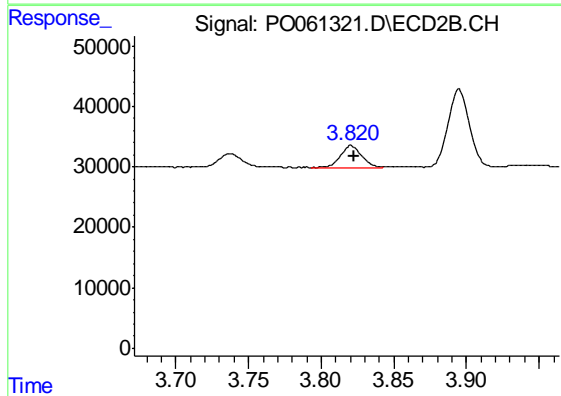
R.T.: 3.737 min
 Delta R.T.: -0.003 min
 Response: 25081
 Conc: 70.85 ng/ml



#9 AR-1221-2

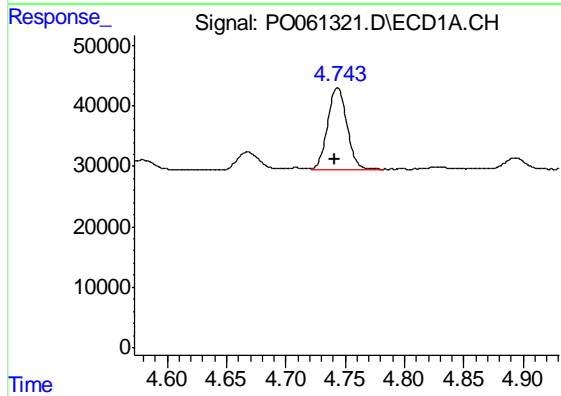
R.T.: 4.667 min
 Delta R.T.: 0.003 min
 Response: 38924
 Conc: 113.96 ng/ml

Instrument :
 ECD_O
 ClientSampled :
 SB-7MSD



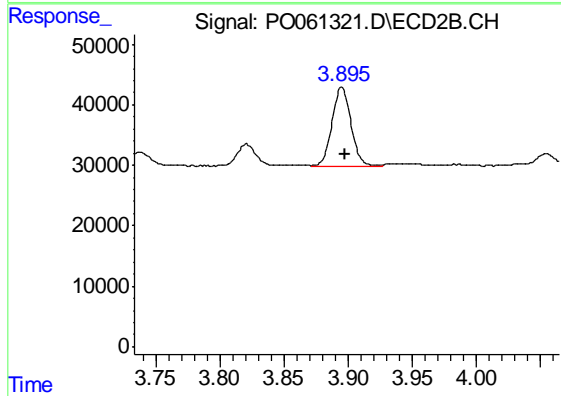
#9 AR-1221-2

R.T.: 3.821 min
 Delta R.T.: -0.002 min
 Response: 36378
 Conc: 129.44 ng/ml



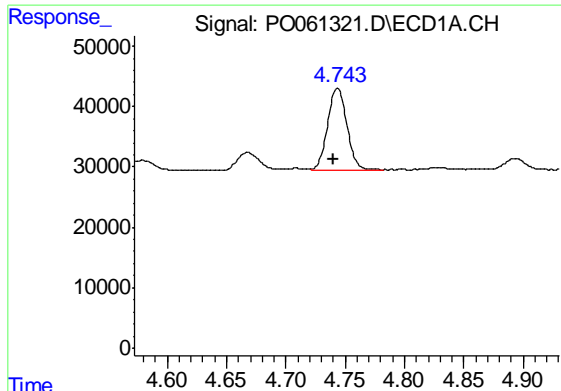
#10 AR-1221-3

R.T.: 4.744 min
 Delta R.T.: 0.003 min
 Response: 155839
 Conc: 147.13 ng/ml



#10 AR-1221-3

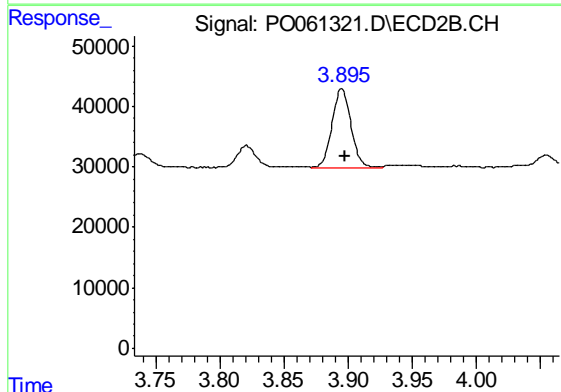
R.T.: 3.895 min
 Delta R.T.: -0.002 min
 Response: 133434
 Conc: 160.75 ng/ml



#11 AR-1232-1

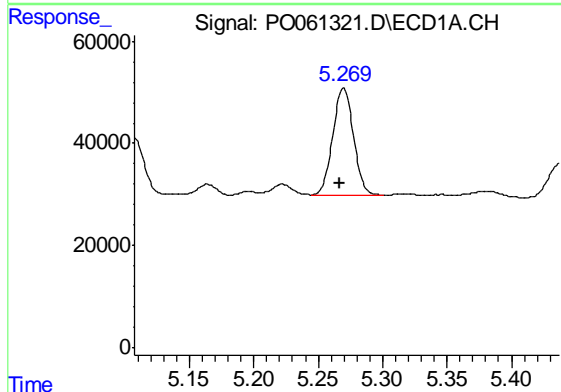
R.T.: 4.744 min
 Delta R.T.: 0.003 min
 Response: 155839
 Conc: 133.56 ng/ml

Instrument :
 ECD_O
 ClientSampleId :
 SB-7MSD



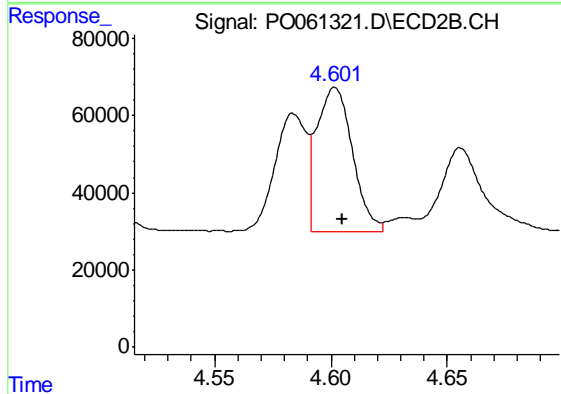
#11 AR-1232-1

R.T.: 3.895 min
 Delta R.T.: -0.002 min
 Response: 133434
 Conc: 146.41 ng/ml



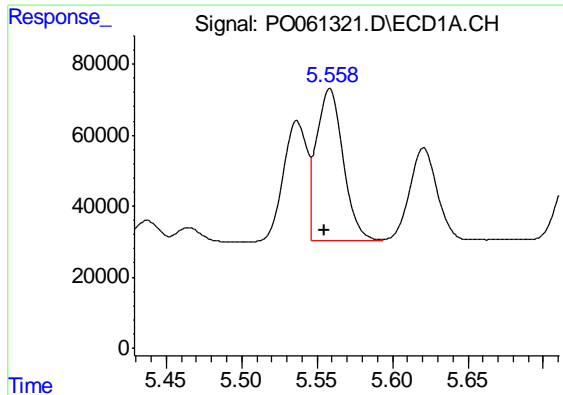
#12 AR-1232-2

R.T.: 5.270 min
 Delta R.T.: 0.003 min
 Response: 234238
 Conc: 361.26 ng/ml



#12 AR-1232-2

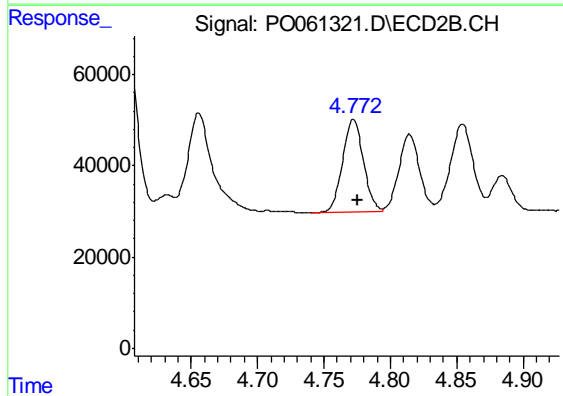
R.T.: 4.602 min
 Delta R.T.: -0.003 min
 Response: 397767
 Conc: 393.96 ng/ml



#13 AR-1232-3

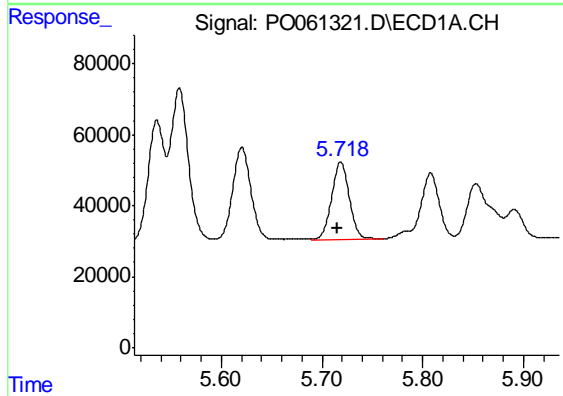
R.T.: 5.559 min
 Delta R.T.: 0.004 min
 Response: 527277
 Conc: 393.68 ng/ml

Instrument :
 ECD_O
 ClientSampleId :
 SB-7MSD



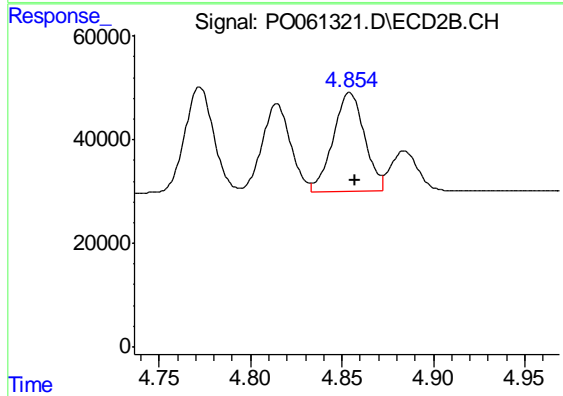
#13 AR-1232-3

R.T.: 4.772 min
 Delta R.T.: -0.003 min
 Response: 223506
 Conc: 398.26 ng/ml



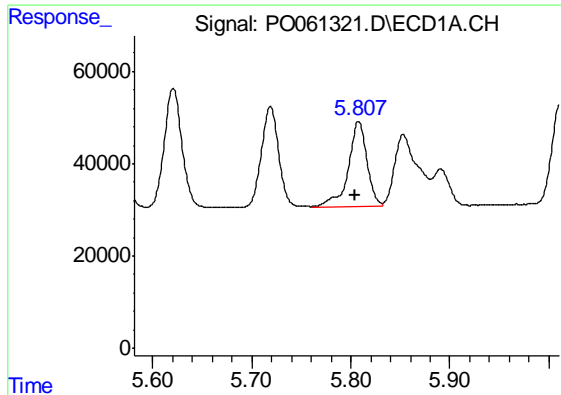
#14 AR-1232-4

R.T.: 5.719 min
 Delta R.T.: 0.004 min
 Response: 268158
 Conc: 390.25 ng/ml



#14 AR-1232-4

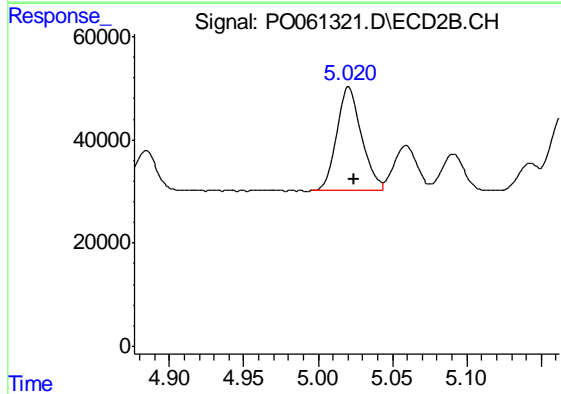
R.T.: 4.854 min
 Delta R.T.: -0.003 min
 Response: 227933
 Conc: 436.47 ng/ml



#15 AR-1232-5

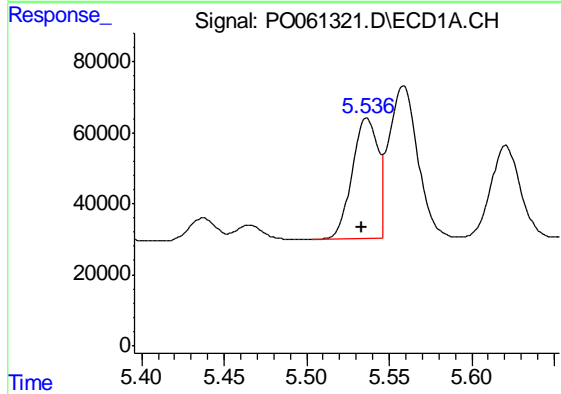
R.T.: 5.808 min
 Delta R.T.: 0.003 min
 Response: 243500
 Conc: 444.67 ng/ml

Instrument :
 ECD_O
 ClientSampleId :
 SB-7MSD



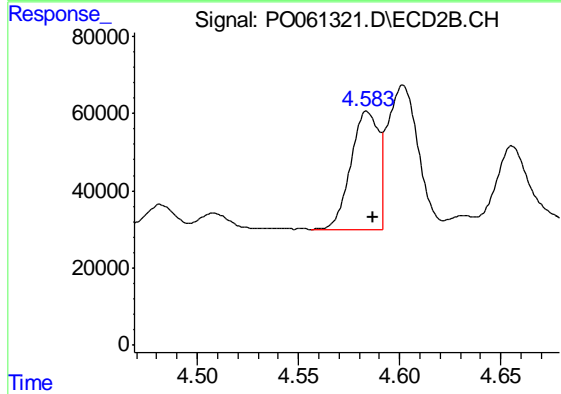
#15 AR-1232-5

R.T.: 5.020 min
 Delta R.T.: -0.004 min
 Response: 237241
 Conc: 419.20 ng/ml



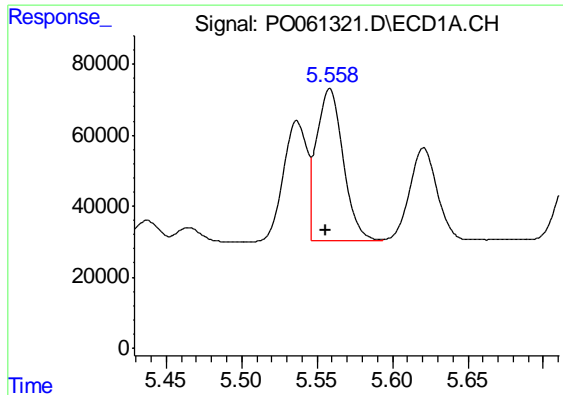
#16 AR-1242-1

R.T.: 5.536 min
 Delta R.T.: 0.003 min
 Response: 370312
 Conc: 310.30 ng/ml



#16 AR-1242-1

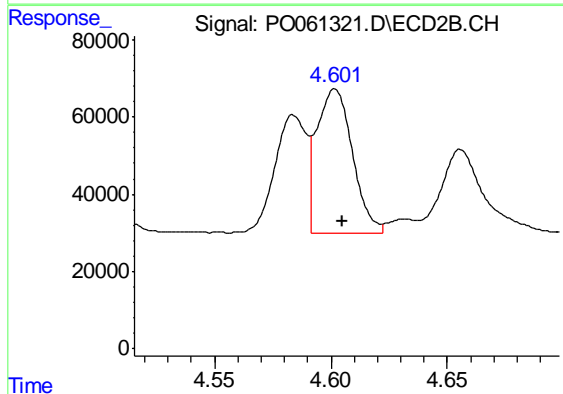
R.T.: 4.584 min
 Delta R.T.: -0.003 min
 Response: 290304
 Conc: 318.88 ng/ml



#17 AR-1242-2

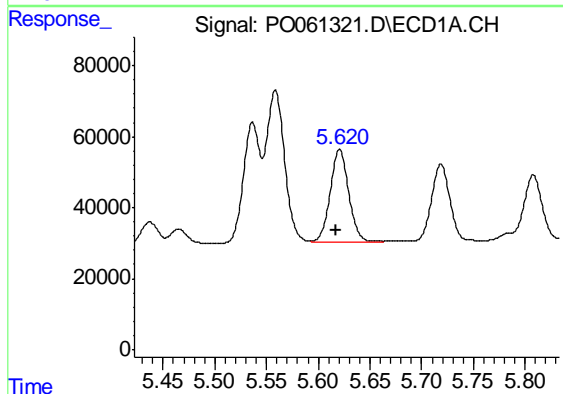
R.T.: 5.559 min
 Delta R.T.: 0.003 min
 Response: 527277
 Conc: 308.51 ng/ml

Instrument :
 ECD_O
 ClientSampleId :
 SB-7MSD



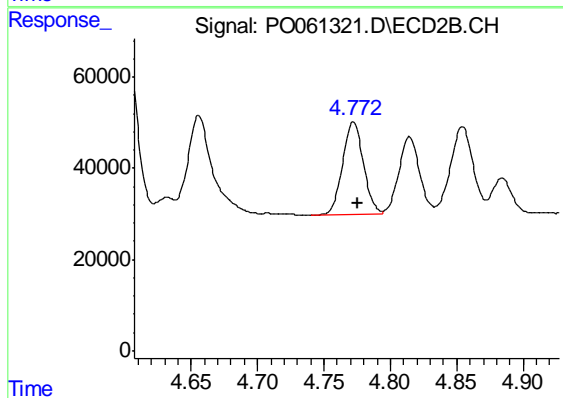
#17 AR-1242-2

R.T.: 4.602 min
 Delta R.T.: -0.003 min
 Response: 397767
 Conc: 317.74 ng/ml



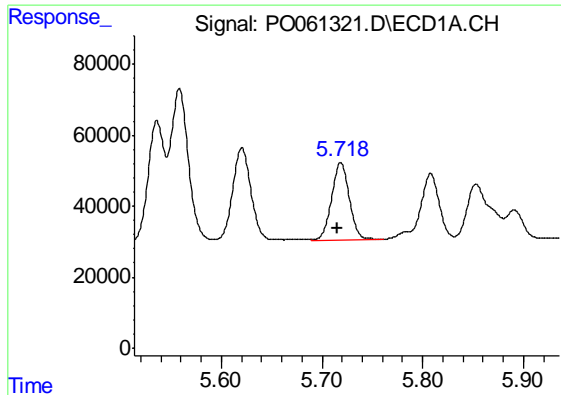
#18 AR-1242-3

R.T.: 5.621 min
 Delta R.T.: 0.003 min
 Response: 327963
 Conc: 302.86 ng/ml



#18 AR-1242-3

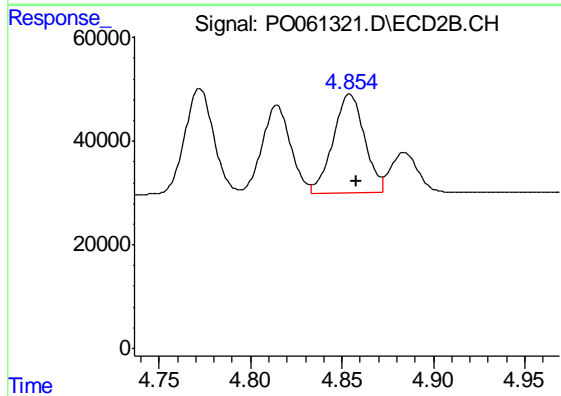
R.T.: 4.772 min
 Delta R.T.: -0.004 min
 Response: 223506
 Conc: 312.79 ng/ml



#19 AR-1242-4

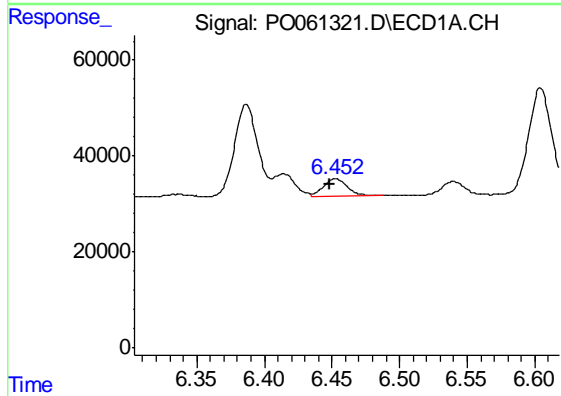
R.T.: 5.719 min
 Delta R.T.: 0.003 min
 Response: 268158
 Conc: 303.76 ng/ml

Instrument :
 ECD_O
 ClientSampleId :
 SB-7MSD



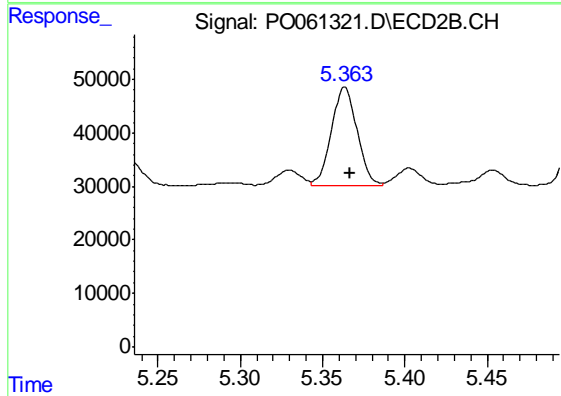
#19 AR-1242-4

R.T.: 4.854 min
 Delta R.T.: -0.004 min
 Response: 227933
 Conc: 312.99 ng/ml



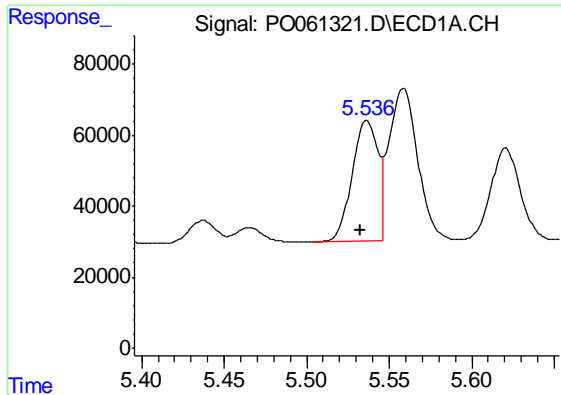
#20 AR-1242-5

R.T.: 6.453 min
 Delta R.T.: 0.004 min
 Response: 44355
 Conc: 39.58 ng/ml



#20 AR-1242-5

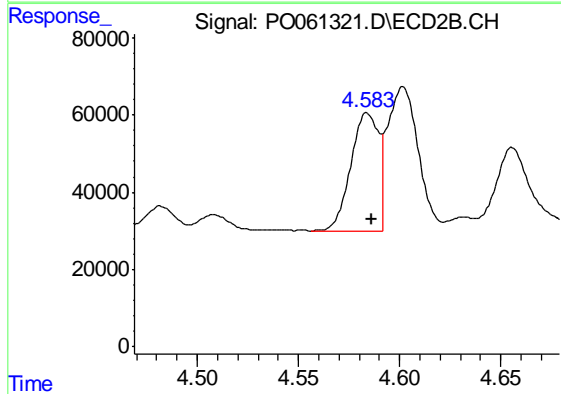
R.T.: 5.363 min
 Delta R.T.: -0.003 min
 Response: 200038
 Conc: 202.08 ng/ml



#21 AR-1248-1

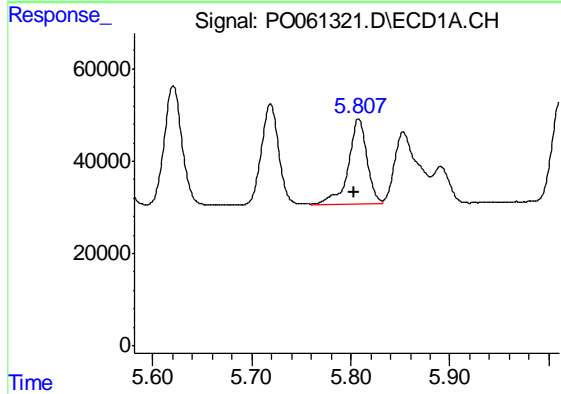
R.T.: 5.536 min
 Delta R.T.: 0.004 min
 Response: 370312
 Conc: 402.25 ng/ml

Instrument :
 ECD_O
 ClientSampleId :
 SB-7MSD



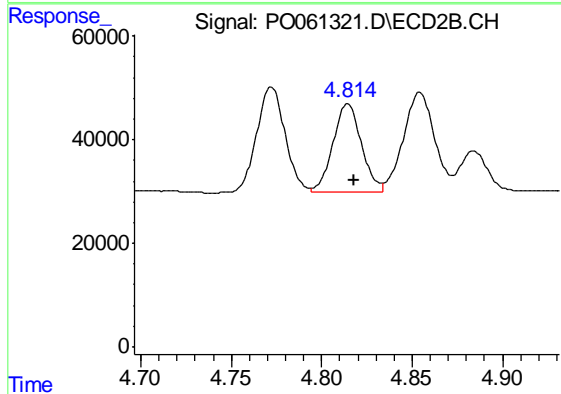
#21 AR-1248-1

R.T.: 4.584 min
 Delta R.T.: -0.002 min
 Response: 290304
 Conc: 409.30 ng/ml



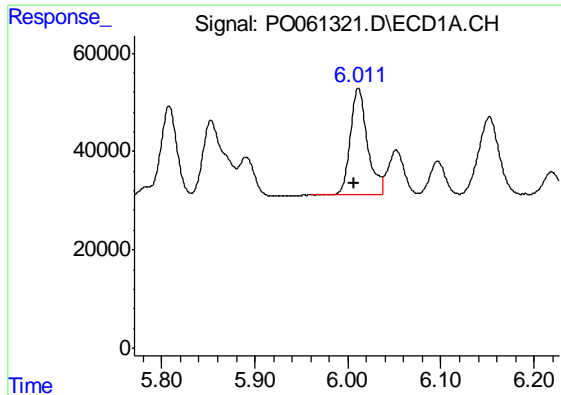
#22 AR-1248-2

R.T.: 5.808 min
 Delta R.T.: 0.004 min
 Response: 243500
 Conc: 182.09 ng/ml



#22 AR-1248-2

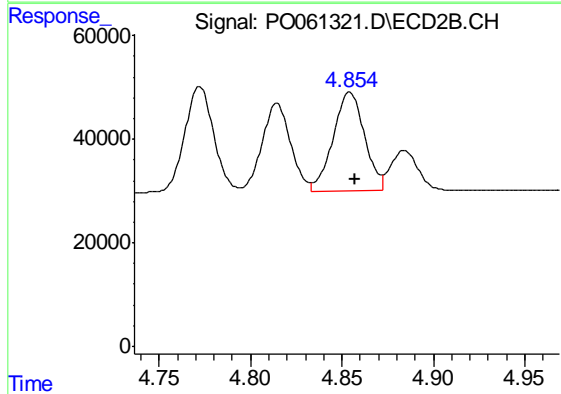
R.T.: 4.814 min
 Delta R.T.: -0.003 min
 Response: 185467
 Conc: 191.96 ng/ml



#23 AR-1248-3

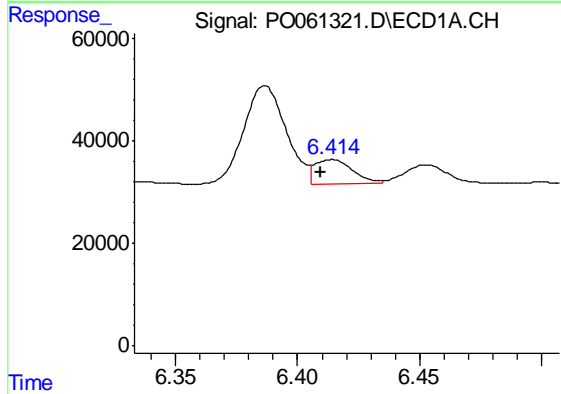
R.T.: 6.011 min
 Delta R.T.: 0.004 min
 Response: 276065
 Conc: 182.41 ng/ml

Instrument :
 ECD_O
 ClientSampleId :
 SB-7MSD



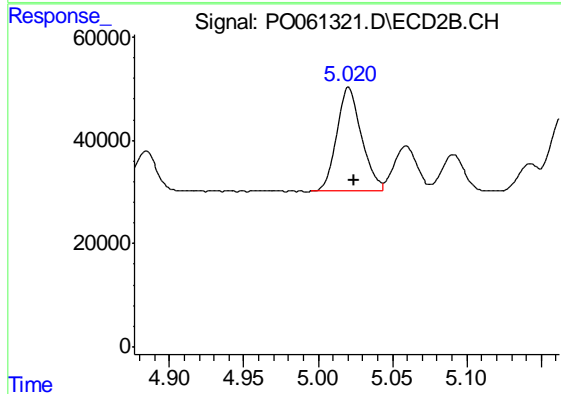
#23 AR-1248-3

R.T.: 4.854 min
 Delta R.T.: -0.003 min
 Response: 227933
 Conc: 226.32 ng/ml



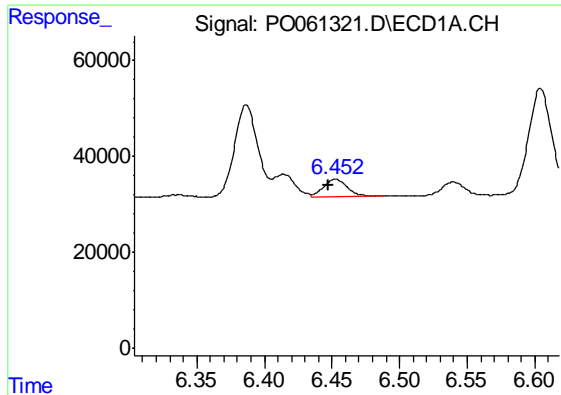
#24 AR-1248-4

R.T.: 6.414 min
 Delta R.T.: 0.005 min
 Response: 51367
 Conc: 28.19 ng/ml



#24 AR-1248-4

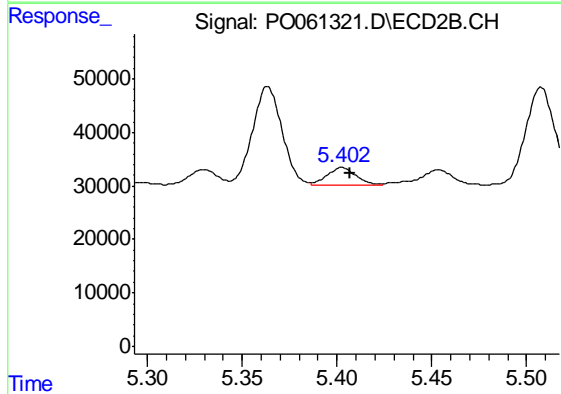
R.T.: 5.020 min
 Delta R.T.: -0.003 min
 Response: 237241
 Conc: 197.55 ng/ml



#25 AR-1248-5

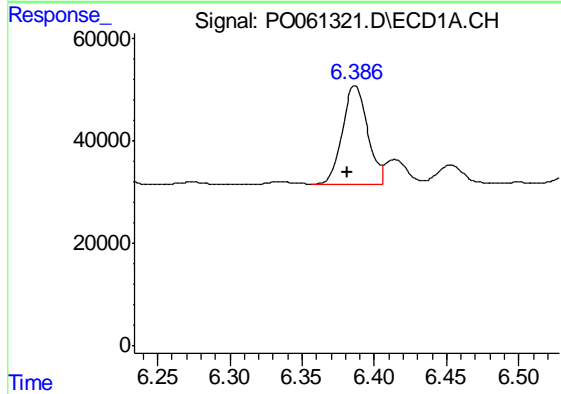
R.T.: 6.453 min
 Delta R.T.: 0.005 min
 Response: 44355
 Conc: 25.35 ng/ml

Instrument :
 ECD_O
 ClientSampleId :
 SB-7MSD



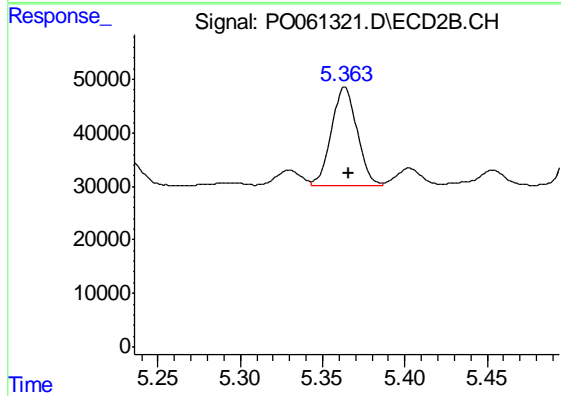
#25 AR-1248-5

R.T.: 5.403 min
 Delta R.T.: -0.004 min
 Response: 34120
 Conc: 26.99 ng/ml



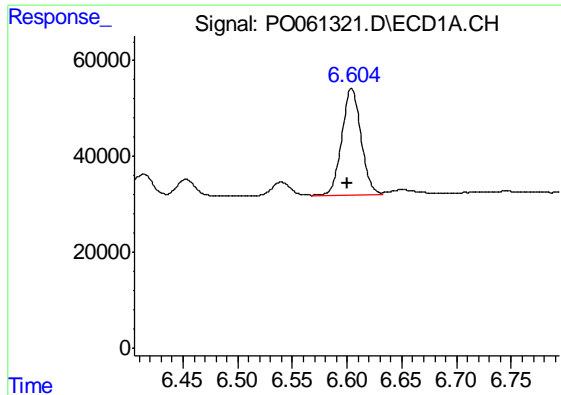
#26 AR-1254-1

R.T.: 6.387 min
 Delta R.T.: 0.005 min
 Response: 233245
 Conc: 121.06 ng/ml



#26 AR-1254-1

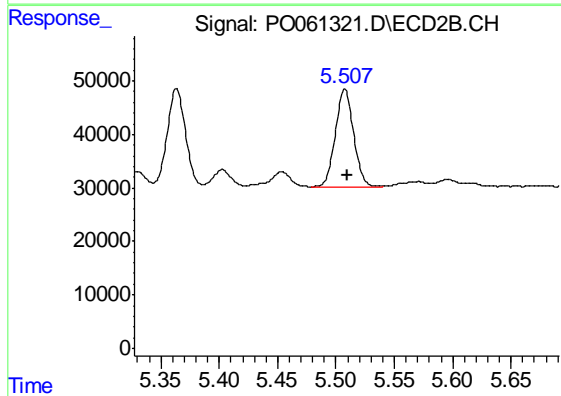
R.T.: 5.363 min
 Delta R.T.: -0.003 min
 Response: 200038
 Conc: 97.06 ng/ml



#27 AR-1254-2

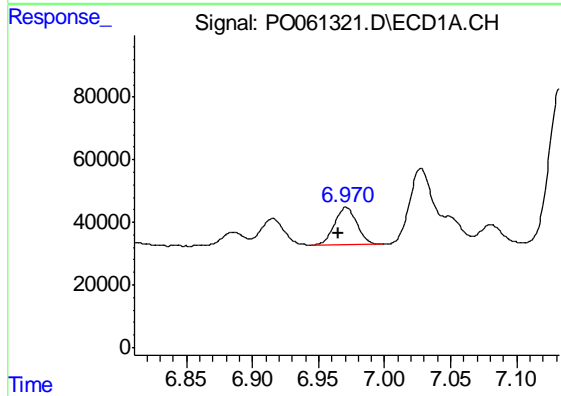
R.T.: 6.604 min
 Delta R.T.: 0.004 min
 Response: 270779
 Conc: 86.05 ng/ml

Instrument :
 ECD_O
 ClientSampleId :
 SB-7MSD



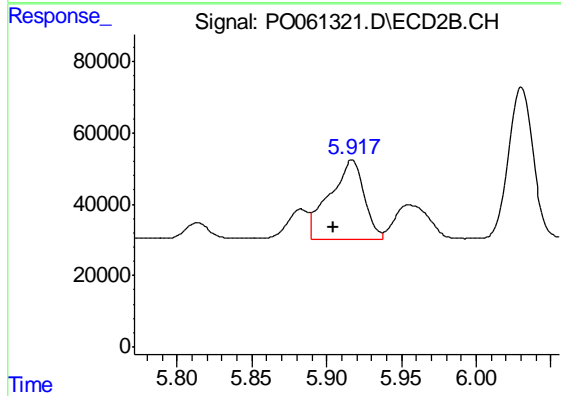
#27 AR-1254-2

R.T.: 5.508 min
 Delta R.T.: -0.003 min
 Response: 199116
 Conc: 105.52 ng/ml



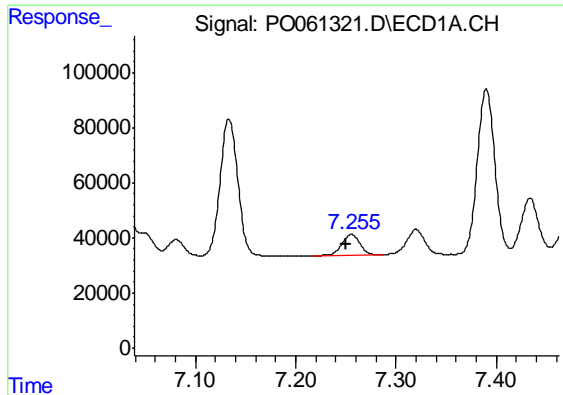
#28 AR-1254-3

R.T.: 6.971 min
 Delta R.T.: 0.006 min
 Response: 141192
 Conc: 40.09 ng/ml



#28 AR-1254-3

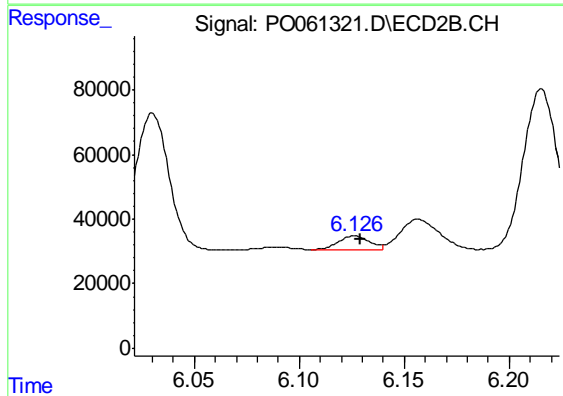
R.T.: 5.917 min
 Delta R.T.: 0.013 min
 Response: 355627
 Conc: 111.85 ng/ml



#29 AR-1254-4

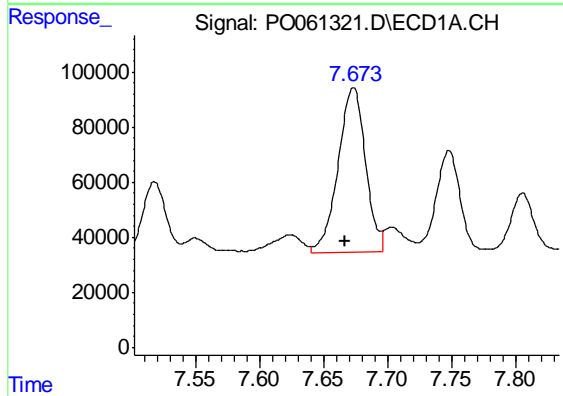
R.T.: 7.256 min
 Delta R.T.: 0.006 min
 Response: 96628
 Conc: 35.69 ng/ml

Instrument :
 ECD_O
 ClientSampleId :
 SB-7MSD



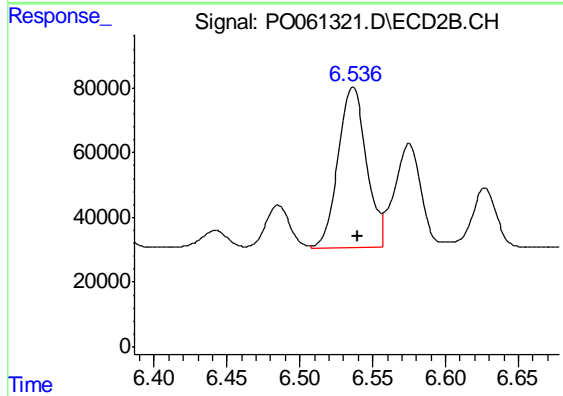
#29 AR-1254-4

R.T.: 6.126 min
 Delta R.T.: -0.003 min
 Response: 45783
 Conc: 21.99 ng/ml



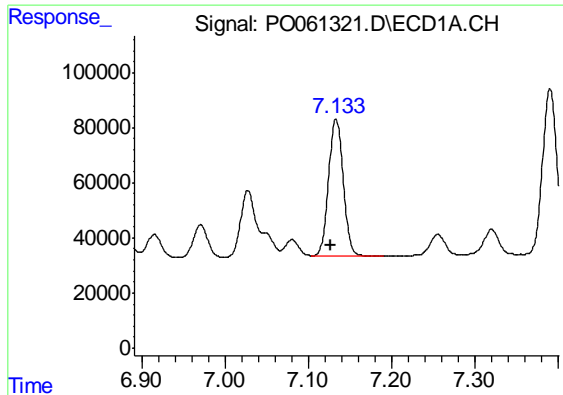
#30 AR-1254-5

R.T.: 7.673 min
 Delta R.T.: 0.006 min
 Response: 890970
 Conc: 302.14 ng/ml



#30 AR-1254-5

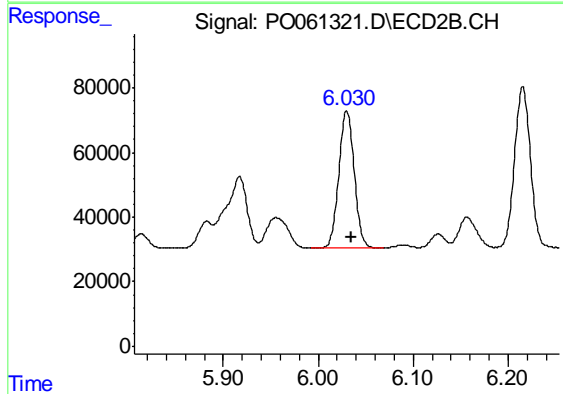
R.T.: 6.536 min
 Delta R.T.: -0.004 min
 Response: 670385
 Conc: 211.82 ng/ml



#31 AR-1260-1

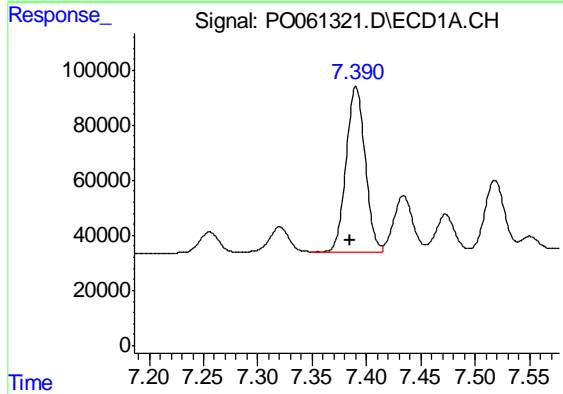
R.T.: 7.133 min
 Delta R.T.: 0.006 min
 Response: 613641
 Conc: 252.05 ng/ml

Instrument :
 ECD_O
 ClientSampled :
 SB-7MSD



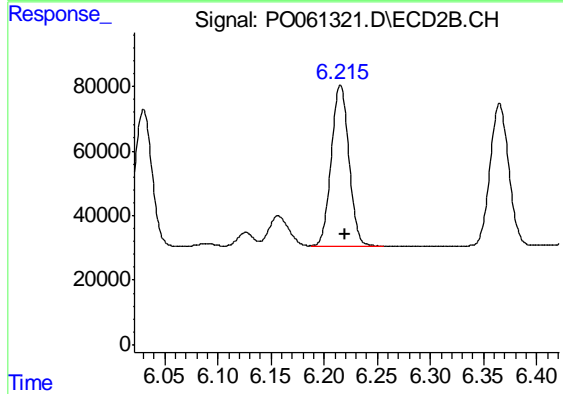
#31 AR-1260-1

R.T.: 6.030 min
 Delta R.T.: -0.004 min
 Response: 482860
 Conc: 229.56 ng/ml



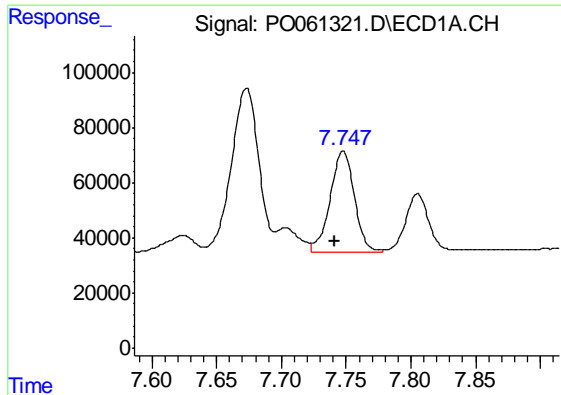
#32 AR-1260-2

R.T.: 7.390 min
 Delta R.T.: 0.006 min
 Response: 734405
 Conc: 242.91 ng/ml



#32 AR-1260-2

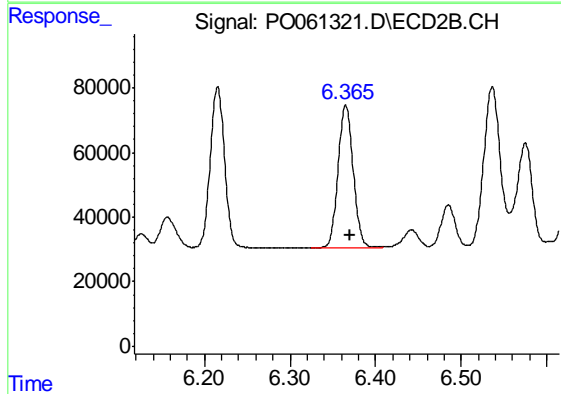
R.T.: 6.215 min
 Delta R.T.: -0.004 min
 Response: 577498
 Conc: 223.88 ng/ml



#33 AR-1260-3

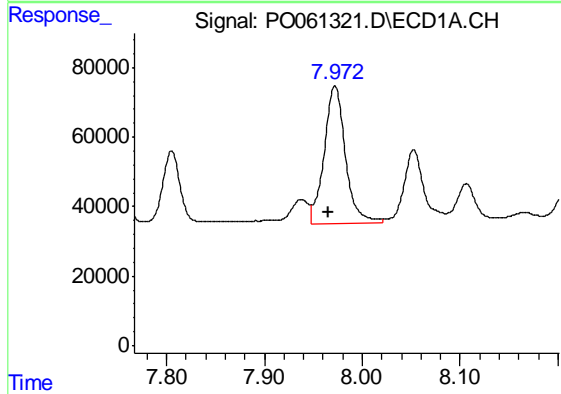
R.T.: 7.748 min
 Delta R.T.: 0.007 min
 Response: 480275
 Conc: 201.25 ng/ml

Instrument :
 ECD_O
 ClientSampleId :
 SB-7MSD



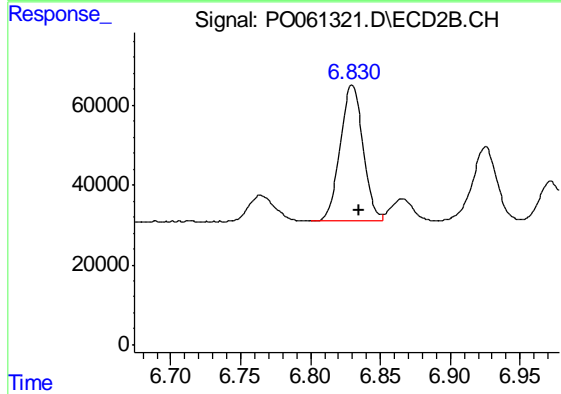
#33 AR-1260-3

R.T.: 6.365 min
 Delta R.T.: -0.005 min
 Response: 541421
 Conc: 224.84 ng/ml



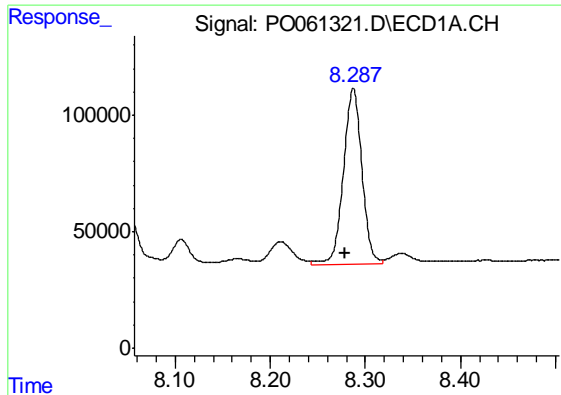
#34 AR-1260-4

R.T.: 7.972 min
 Delta R.T.: 0.007 min
 Response: 596274
 Conc: 213.13 ng/ml



#34 AR-1260-4

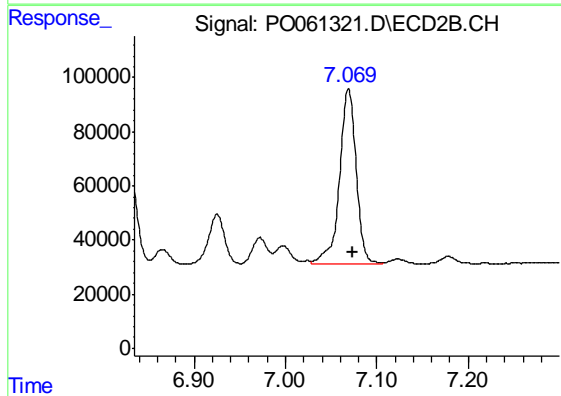
R.T.: 6.830 min
 Delta R.T.: -0.005 min
 Response: 389275
 Conc: 181.88 ng/ml



#35 AR-1260-5

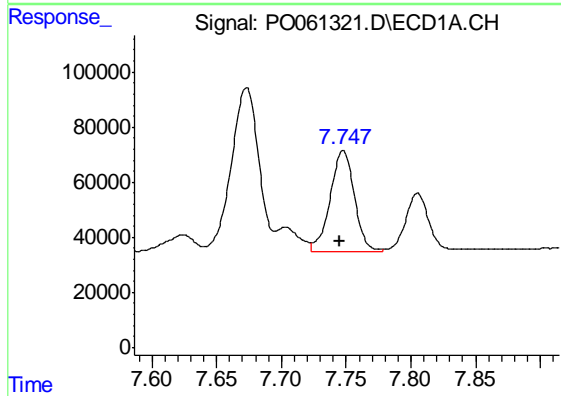
R.T.: 8.287 min
 Delta R.T.: 0.008 min
 Response: 1028809
 Conc: 188.93 ng/ml

Instrument :
 ECD_O
 ClientSampled :
 SB-7MSD



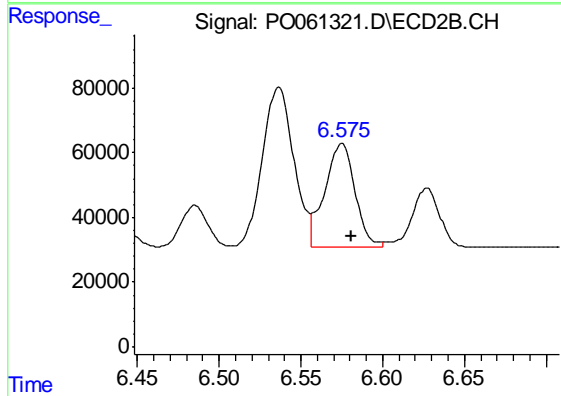
#35 AR-1260-5

R.T.: 7.069 min
 Delta R.T.: -0.004 min
 Response: 821646
 Conc: 170.03 ng/ml



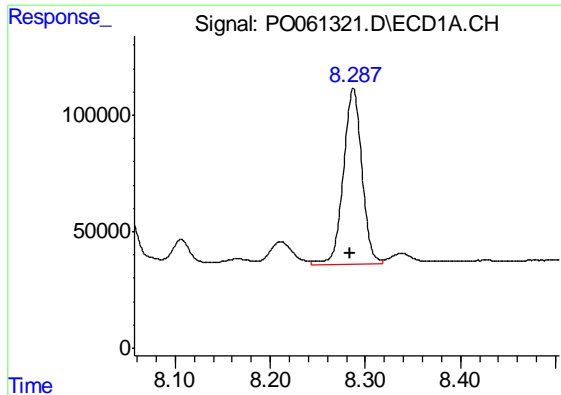
#36 AR-1262-1

R.T.: 7.748 min
 Delta R.T.: 0.003 min
 Response: 480275
 Conc: 135.97 ng/ml



#36 AR-1262-1

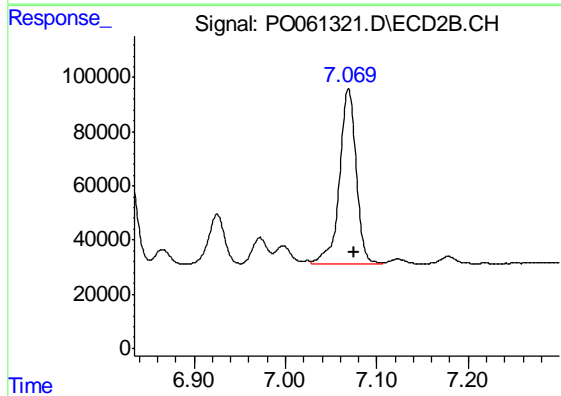
R.T.: 6.575 min
 Delta R.T.: -0.006 min
 Response: 416954
 Conc: 139.59 ng/ml



#37 AR-1262-2

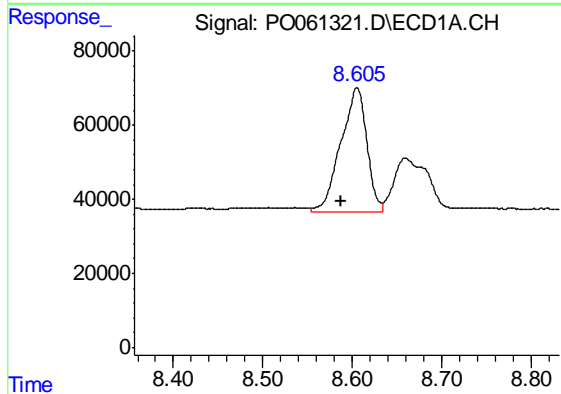
R.T.: 8.287 min
Delta R.T.: 0.004 min
Response: 1028809
Conc: 165.02 ng/ml

Instrument :
ECD_O
ClientSampleId :
SB-7MSD



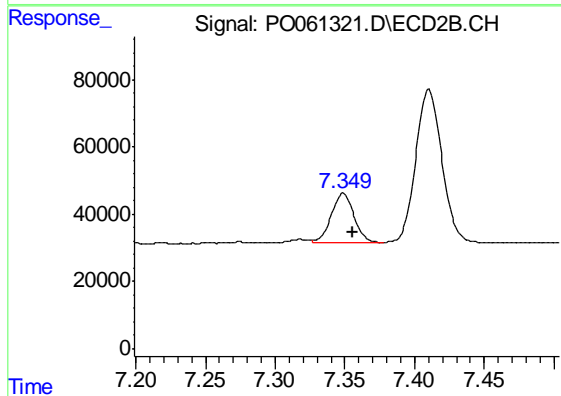
#37 AR-1262-2

R.T.: 7.069 min
Delta R.T.: -0.005 min
Response: 821646
Conc: 158.02 ng/ml



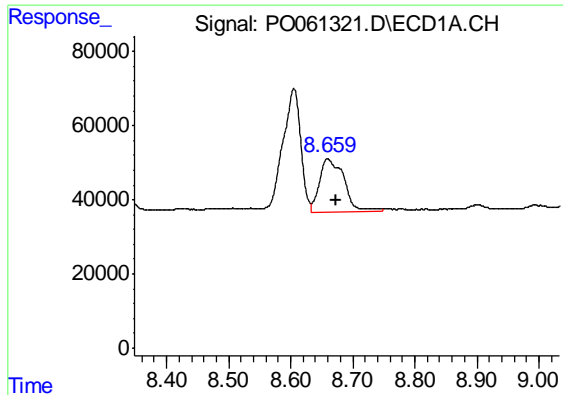
#38 AR-1262-3

R.T.: 8.605 min
Delta R.T.: 0.018 min
Response: 678440
Conc: 159.23 ng/ml



#38 AR-1262-3

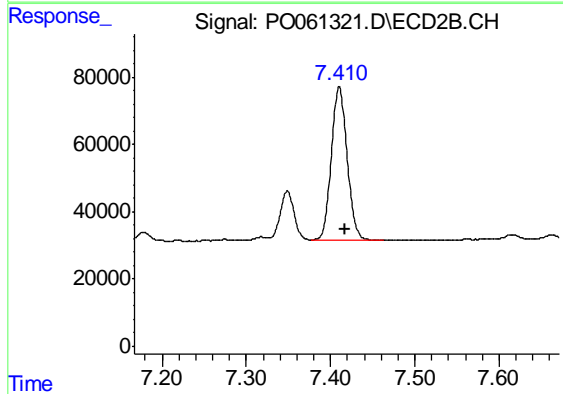
R.T.: 7.349 min
Delta R.T.: -0.007 min
Response: 171276
Conc: 80.70 ng/ml



#39 AR-1262-4

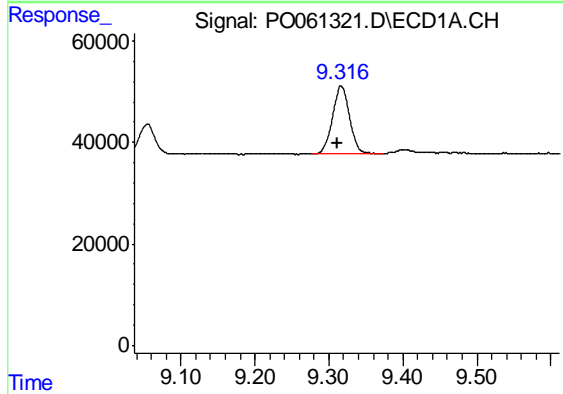
R.T.: 8.659 min
Delta R.T.: -0.014 min
Response: 395847
Conc: 121.41 ng/ml

Instrument :
ECD_O
ClientSampled :
SB-7MSD



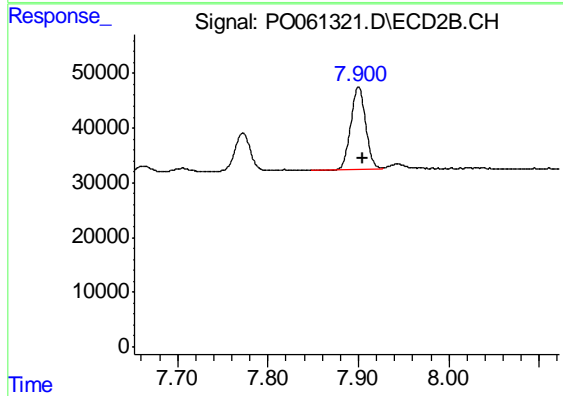
#39 AR-1262-4

R.T.: 7.410 min
Delta R.T.: -0.008 min
Response: 597192
Conc: 156.35 ng/ml



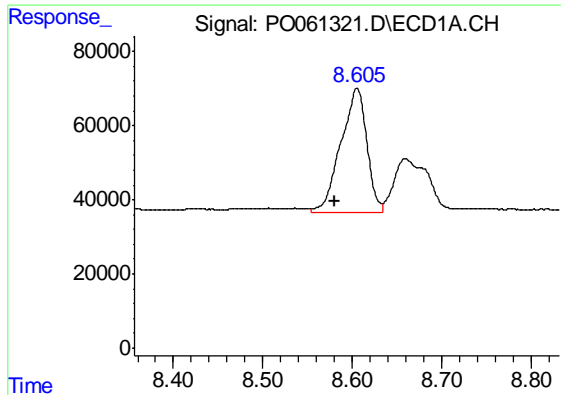
#40 AR-1262-5

R.T.: 9.316 min
Delta R.T.: 0.005 min
Response: 214344
Conc: 105.41 ng/ml



#40 AR-1262-5

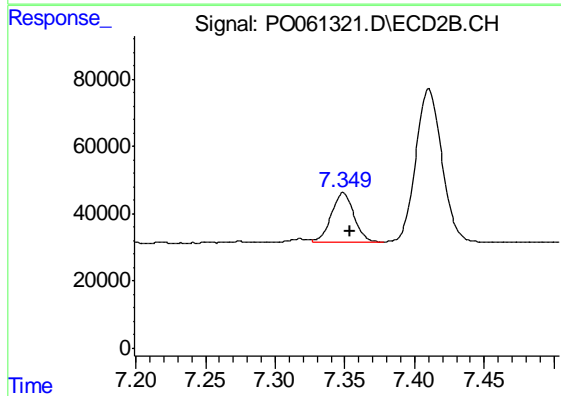
R.T.: 7.900 min
Delta R.T.: -0.005 min
Response: 172482
Conc: 103.05 ng/ml



#41 AR-1268-1

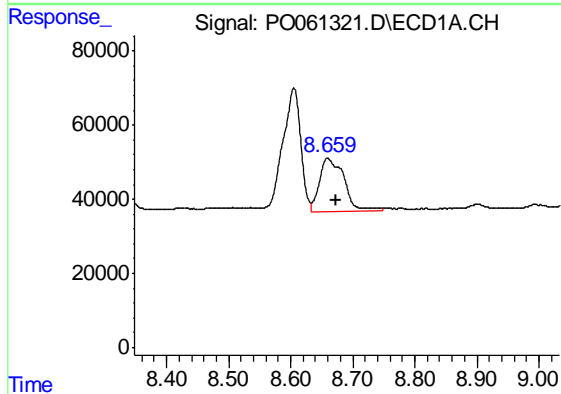
R.T.: 8.605 min
Delta R.T.: 0.025 min
Response: 678440
Conc: 91.92 ng/ml

Instrument :
ECD_O
ClientSampleId :
SB-7MSD



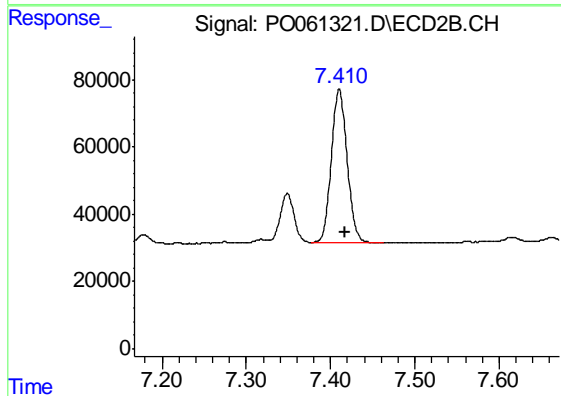
#41 AR-1268-1

R.T.: 7.349 min
Delta R.T.: -0.005 min
Response: 171276
Conc: 29.22 ng/ml



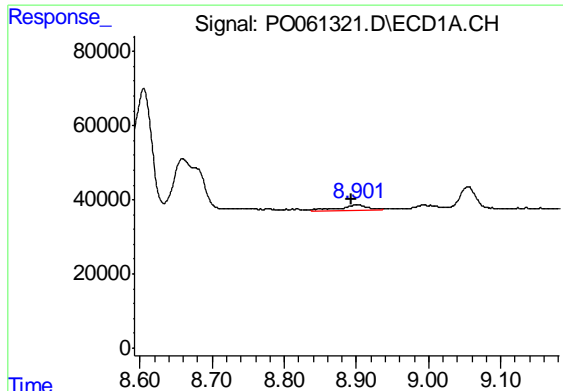
#42 AR-1268-2

R.T.: 8.659 min
Delta R.T.: -0.014 min
Response: 395847
Conc: 58.60 ng/ml



#42 AR-1268-2

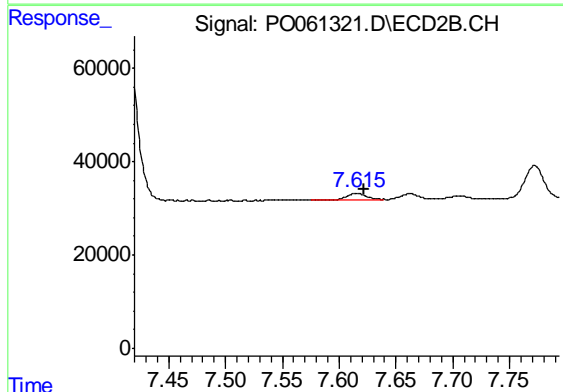
R.T.: 7.410 min
Delta R.T.: -0.007 min
Response: 597192
Conc: 112.04 ng/ml



#43 AR-1268-3

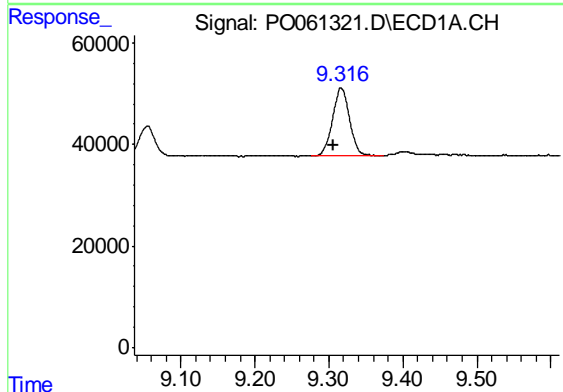
R.T.: 8.901 min
 Delta R.T.: 0.008 min
 Response: 34823
 Conc: 6.20 ng/ml

Instrument :
 ECD_O
 ClientSampleId :
 SB-7MSD



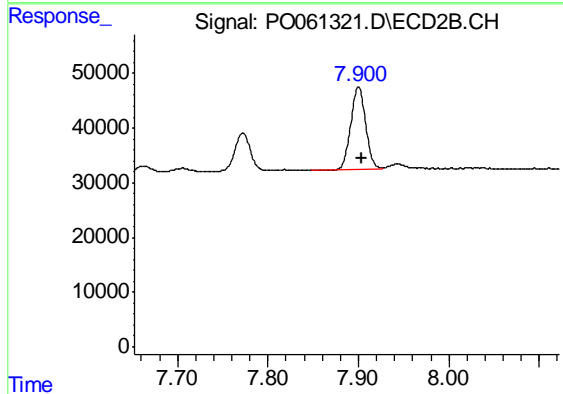
#43 AR-1268-3

R.T.: 7.615 min
 Delta R.T.: -0.006 min
 Response: 17364
 Conc: 3.92 ng/ml



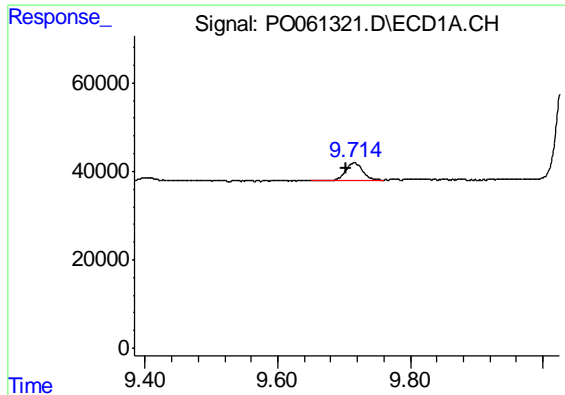
#44 AR-1268-4

R.T.: 9.316 min
 Delta R.T.: 0.010 min
 Response: 214344
 Conc: 92.92 ng/ml



#44 AR-1268-4

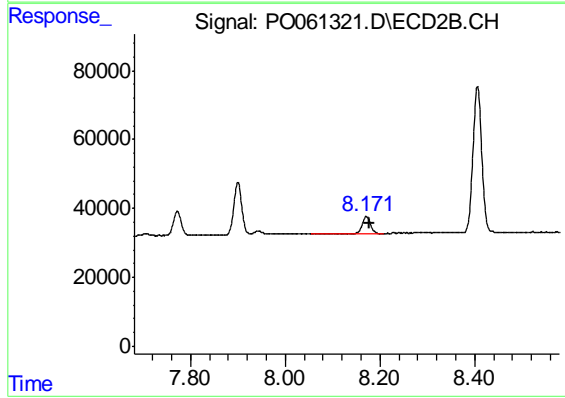
R.T.: 7.900 min
 Delta R.T.: -0.003 min
 Response: 172482
 Conc: 90.26 ng/ml



#45 AR-1268-5

R.T.: 9.715 min
Delta R.T.: 0.011 min
Response: 72058
Conc: 4.54 ng/ml

Instrument :
ECD_O
ClientSampleId :
SB-7MSD



#45 AR-1268-5

R.T.: 8.171 min
Delta R.T.: -0.005 min
Response: 61211
Conc: 5.09 ng/ml