

Data Path : Z:\pestpcbsrv\HPCHEM1\ECD\_0\Data\P0092421\  
 Data File : P0081481.D  
 Signal(s) : Signal #1: ECD1A.CH Signal #2: ECD2B.CH  
 Acq On : 24 Sep 2021 13:08  
 Operator : AJ\MA  
 Sample : M3875-11  
 Misc :  
 ALS Vial : 12 Sample Multiplier: 1

Instrument :  
 ECD\_0  
 ClientSampleId :  
 20883

Integration File signal 1: autoint1.e  
 Integration File signal 2: autoint2.e  
 Quant Time: Sep 25 01:14:51 2021  
 Quant Method : Z:\pestpcbsrv\HPCHEM1\ECD\_0\methods\P0092321.M  
 Quant Title : GC EXTRACTABLES  
 QLast Update : Fri Sep 24 02:21:54 2021  
 Response via : Initial Calibration  
 Integrator: ChemStation 6890 Scale Mode: Small noise peaks clipped

Volume Inj. : 2 µl  
 Signal #1 Phase : ZB-MR1 Signal #2 Phase: ZB-MR2  
 Signal #1 Info : 30Mx0.32mmx 0.50µ Signal #2 Info : 30M x 0.32mm x 0.25µm

	Compound	RT#1	RT#2	Resp#1	Resp#2	ng/ml	ng/ml
-----							
System Monitoring Compounds							
1)	SA Tetrachlo...	4.867	3.985	931034	283776	10.440	10.651
2)	SA Decachlor...	10.876	9.331	598005	187428	8.028	8.071
Target Compounds							
21)	L5 AR-1248-1	6.195	5.255	43214	10398	21.469	17.375
22)	L5 AR-1248-2	6.492	5.518	38500	11282	14.597	12.714
23)	L5 AR-1248-3	6.708	5.562	43902	9784	14.027	11.191m
24)	L5 AR-1248-4	7.138	5.750	95628	7403	27.765	7.286m#
25)	L5 AR-1248-5	7.178	6.175	77940	17402	23.054	18.032
26)	L6 AR-1254-1	7.108	6.133	95505	33596	26.637	21.940
27)	L6 AR-1254-2	7.341	6.292	140898	16625	25.553	12.219 #
28)	L6 AR-1254-3	7.723	6.717	143845	25831	25.493	12.986 #
29)	L6 AR-1254-4	8.018	6.958	64089	16898	15.585	13.534
30)	L6 AR-1254-5	8.446	7.391	60678	20599	13.164m	11.019

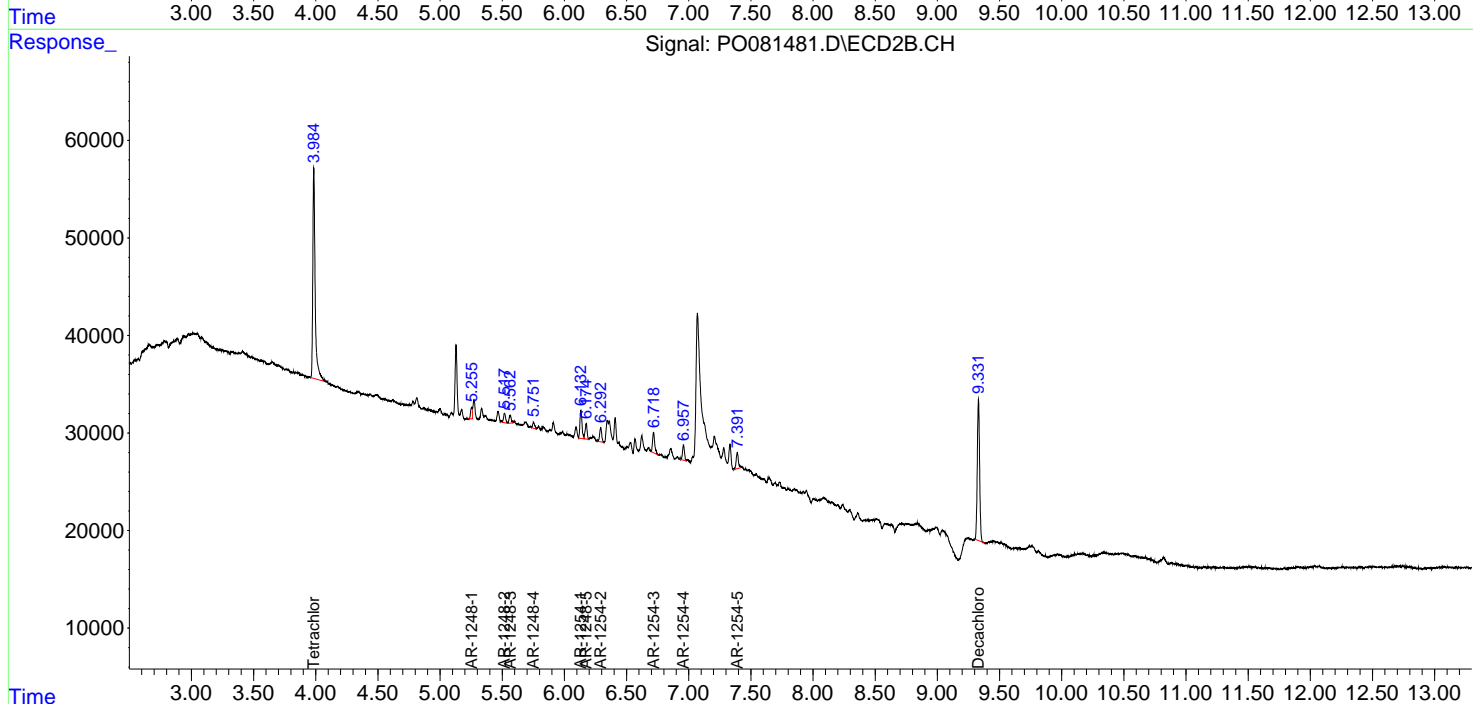
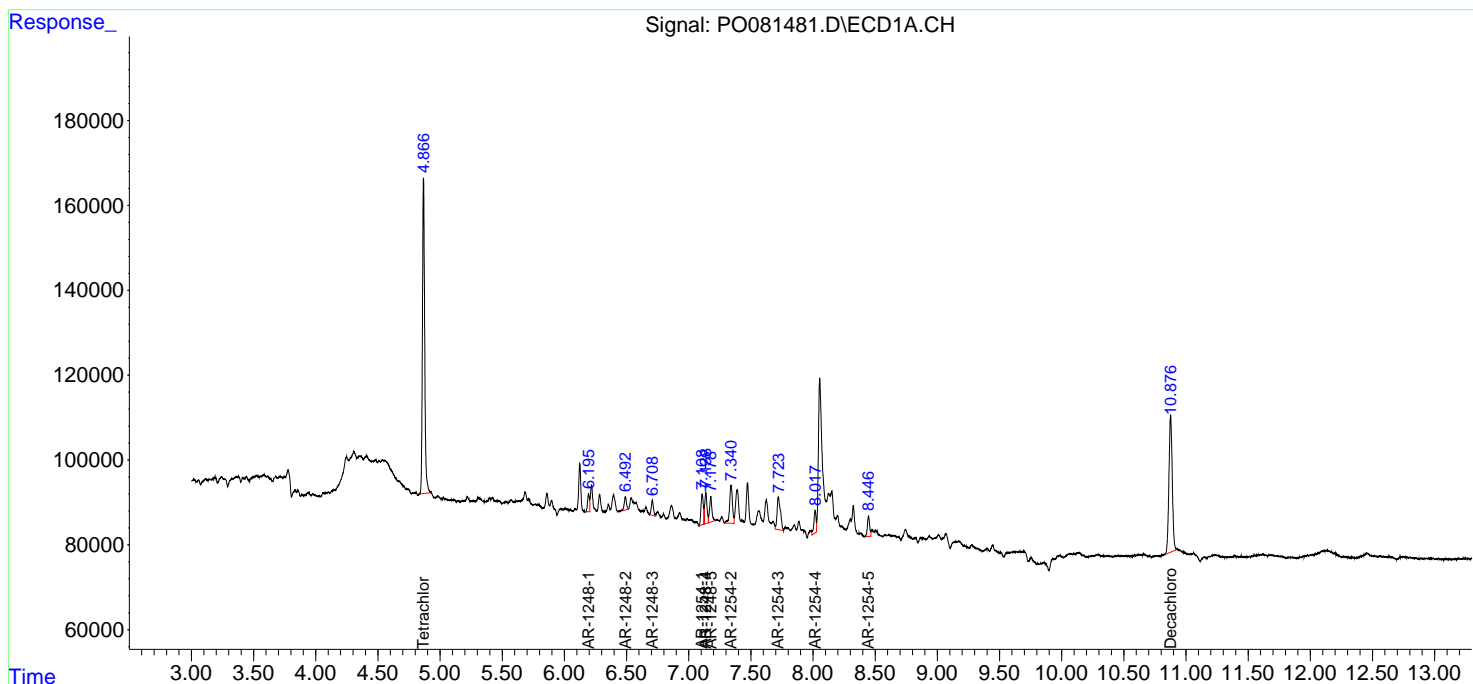
(f)=RT Delta > 1/2 Window (#)=Amounts differ by > 25% (m)=manual int.

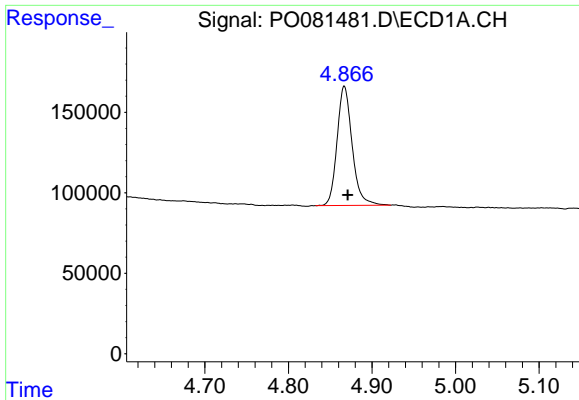
Data Path : Z:\pestpcbsrv\HPCHEM1\ECD\_O\Data\P0092421\  
 Data File : P0081481.D  
 Signal(s) : Signal #1: ECD1A.CH Signal #2: ECD2B.CH  
 Acq On : 24 Sep 2021 13:08  
 Operator : AJ\MA  
 Sample : M3875-11  
 Misc :  
 ALS Vial : 12 Sample Multiplier: 1

Instrument :  
 ECD\_O  
 ClientSampled :  
 20883

Integration File signal 1: autoint1.e  
 Integration File signal 2: autoint2.e  
 Quant Time: Sep 25 01:14:51 2021  
 Quant Method : Z:\pestpcbsrv\HPCHEM1\ECD\_O\methods\P0092321.M  
 Quant Title : GC EXTRACTABLES  
 QLast Update : Fri Sep 24 02:21:54 2021  
 Response via : Initial Calibration  
 Integrator: ChemStation 6890 Scale Mode: Small noise peaks clipped

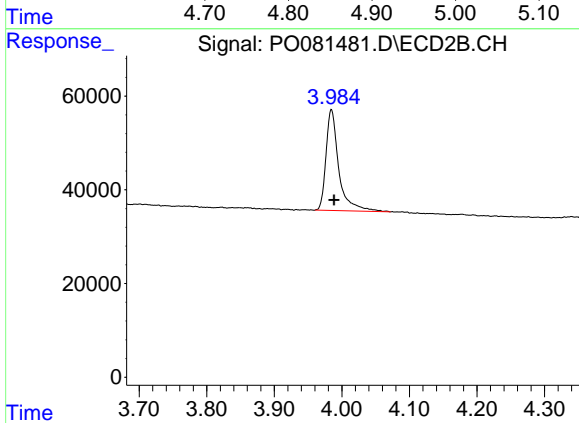
Volume Inj. : 2 µl  
 Signal #1 Phase : ZB-MR1 Signal #2 Phase: ZB-MR2  
 Signal #1 Info : 30Mx0.32mmx 0.50µ Signal #2 Info : 30M x 0.32mm x 0.25µm



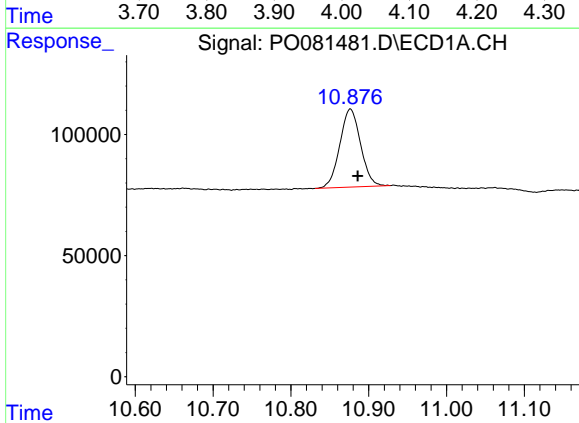


#1 Tetrachloro-m-xylene  
 R.T.: 4.867 min  
 Delta R.T.: -0.004 min  
 Response: 931034  
 Conc: 10.44 ng/ml

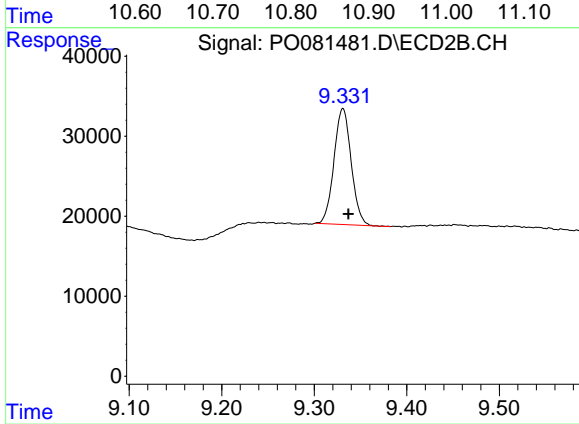
Instrument :  
 ECD\_O  
 ClientSampleId :  
 20883



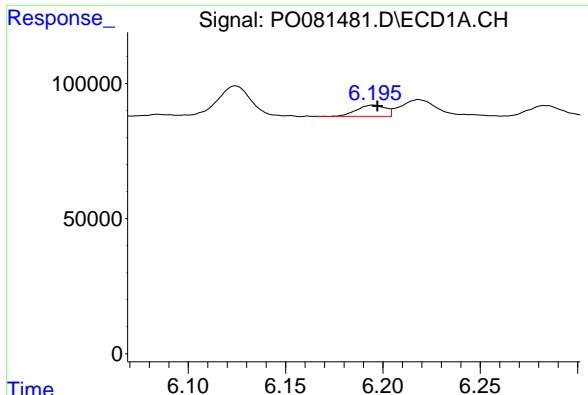
#1 Tetrachloro-m-xylene  
 R.T.: 3.985 min  
 Delta R.T.: -0.004 min  
 Response: 283776  
 Conc: 10.65 ng/ml



#2 Decachlorobiphenyl  
 R.T.: 10.876 min  
 Delta R.T.: -0.010 min  
 Response: 598005  
 Conc: 8.03 ng/ml

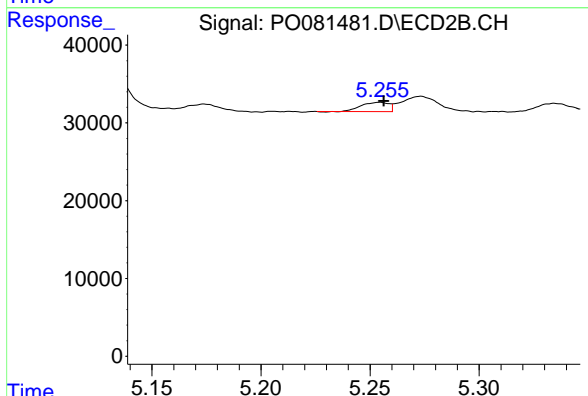


#2 Decachlorobiphenyl  
 R.T.: 9.331 min  
 Delta R.T.: -0.006 min  
 Response: 187428  
 Conc: 8.07 ng/ml

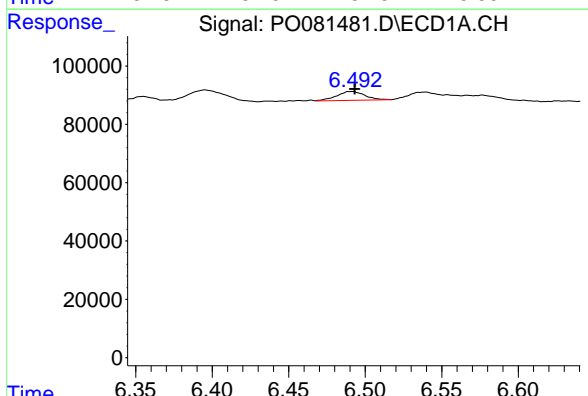


#21 AR-1248-1  
 R.T.: 6.195 min  
 Delta R.T.: -0.002 min  
 Response: 43214  
 Conc: 21.47 ng/ml

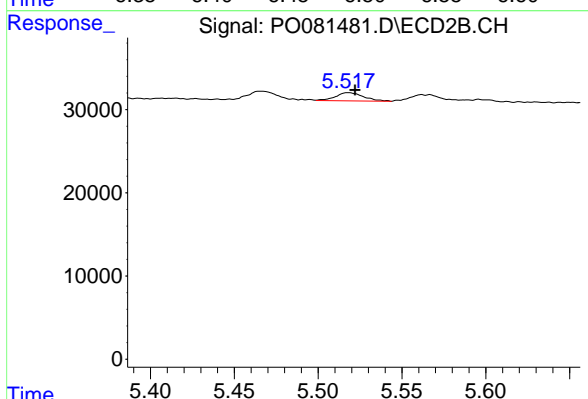
Instrument :  
 ECD\_O  
 ClientSampled :  
 20883



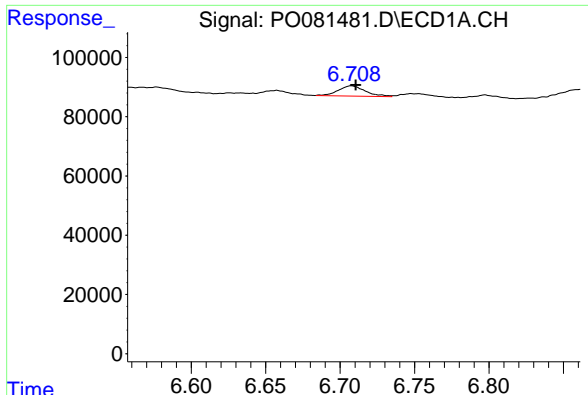
#21 AR-1248-1  
 R.T.: 5.255 min  
 Delta R.T.: -0.002 min  
 Response: 10398  
 Conc: 17.37 ng/ml



#22 AR-1248-2  
 R.T.: 6.492 min  
 Delta R.T.: -0.001 min  
 Response: 38500  
 Conc: 14.60 ng/ml



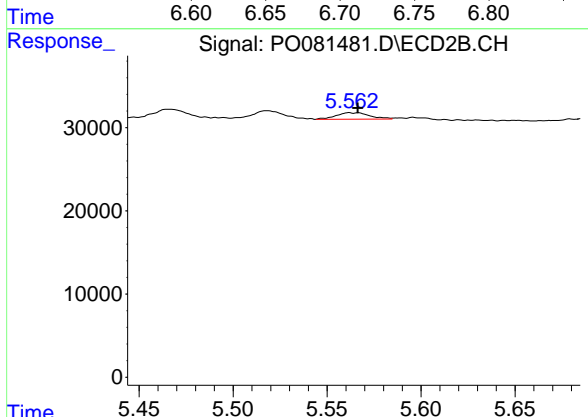
#22 AR-1248-2  
 R.T.: 5.518 min  
 Delta R.T.: -0.004 min  
 Response: 11282  
 Conc: 12.71 ng/ml



#23 AR-1248-3

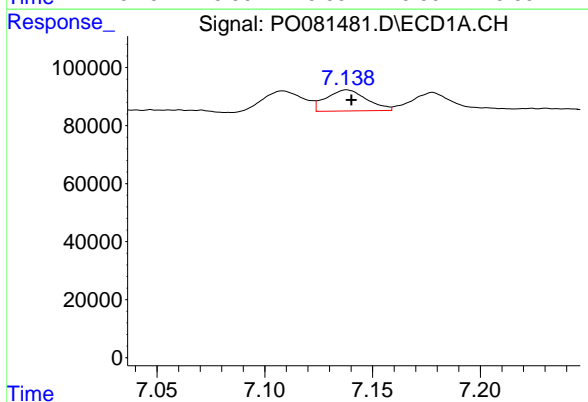
R.T.: 6.708 min  
 Delta R.T.: -0.003 min  
 Response: 43902  
 Conc: 14.03 ng/ml

Instrument :  
 ECD\_O  
 ClientSampleId :  
 20883



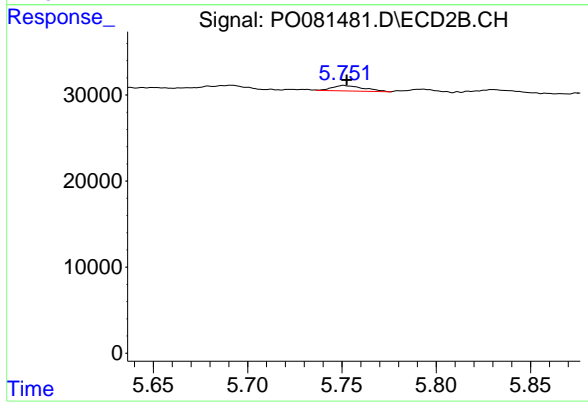
#23 AR-1248-3

R.T.: 5.562 min  
 Delta R.T.: -0.005 min  
 Response: 9784  
 Conc: 11.19 ng/ml m



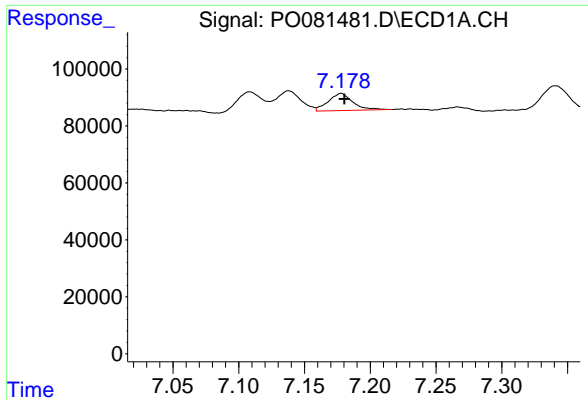
#24 AR-1248-4

R.T.: 7.138 min  
 Delta R.T.: -0.002 min  
 Response: 95628  
 Conc: 27.77 ng/ml



#24 AR-1248-4

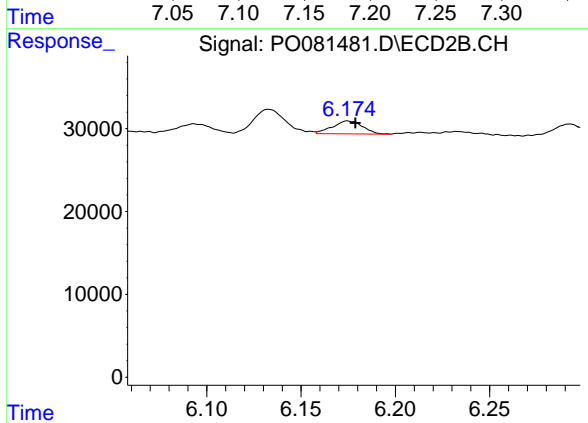
R.T.: 5.750 min  
 Delta R.T.: -0.002 min  
 Response: 7403  
 Conc: 7.29 ng/ml m



#25 AR-1248-5

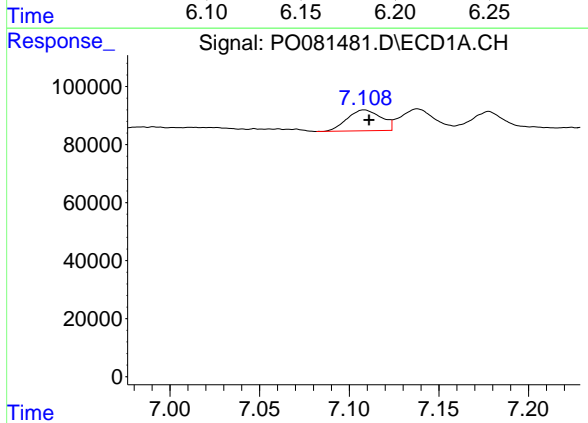
R.T.: 7.178 min  
 Delta R.T.: -0.002 min  
 Response: 77940  
 Conc: 23.05 ng/ml

Instrument :  
 ECD\_O  
 ClientSampled :  
 20883



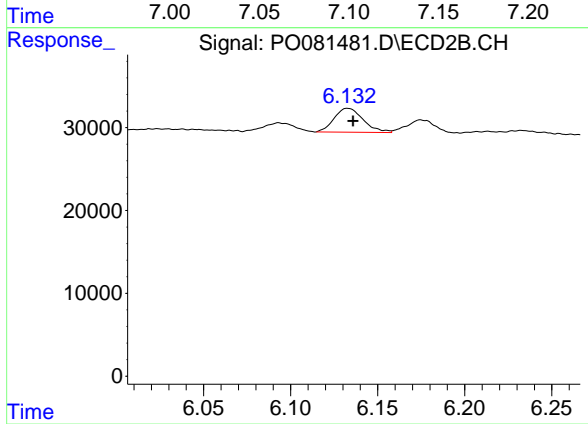
#25 AR-1248-5

R.T.: 6.175 min  
 Delta R.T.: -0.004 min  
 Response: 17402  
 Conc: 18.03 ng/ml



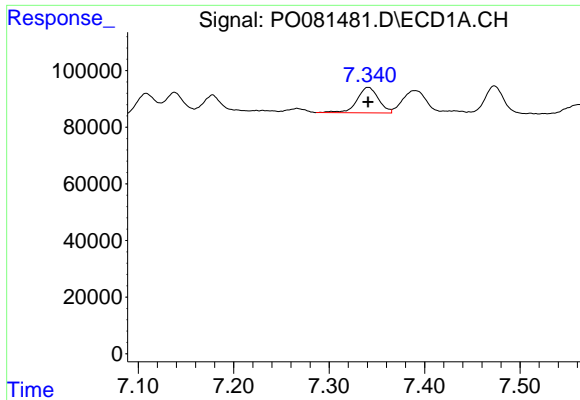
#26 AR-1254-1

R.T.: 7.108 min  
 Delta R.T.: -0.003 min  
 Response: 95505  
 Conc: 26.64 ng/ml



#26 AR-1254-1

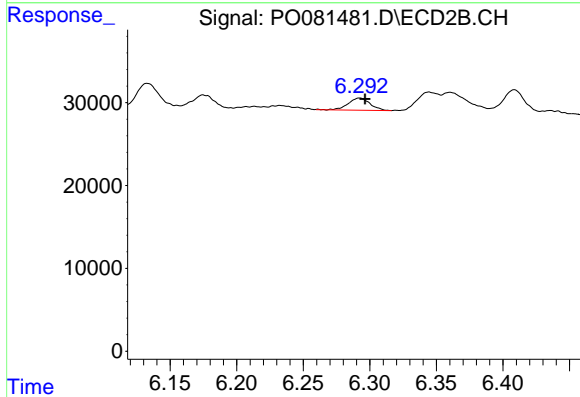
R.T.: 6.133 min  
 Delta R.T.: -0.003 min  
 Response: 33596  
 Conc: 21.94 ng/ml



#27 AR-1254-2

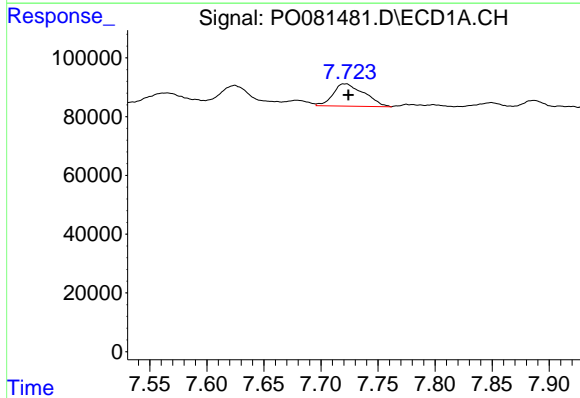
R.T.: 7.341 min  
 Delta R.T.: 0.000 min  
 Response: 140898  
 Conc: 25.55 ng/ml

Instrument :  
 ECD\_O  
 ClientSampleId :  
 20883



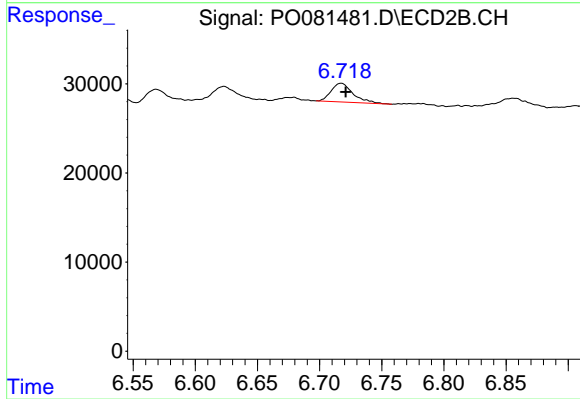
#27 AR-1254-2

R.T.: 6.292 min  
 Delta R.T.: -0.004 min  
 Response: 16625  
 Conc: 12.22 ng/ml



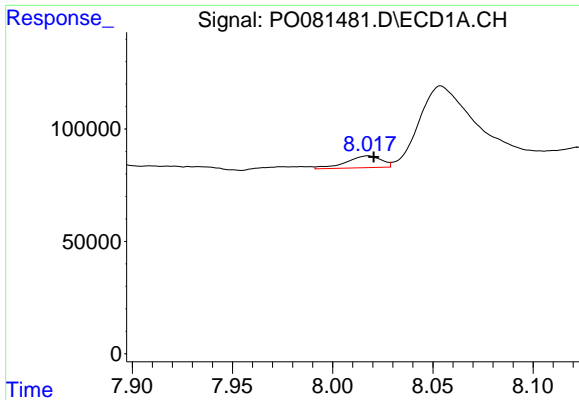
#28 AR-1254-3

R.T.: 7.723 min  
 Delta R.T.: -0.002 min  
 Response: 143845  
 Conc: 25.49 ng/ml



#28 AR-1254-3

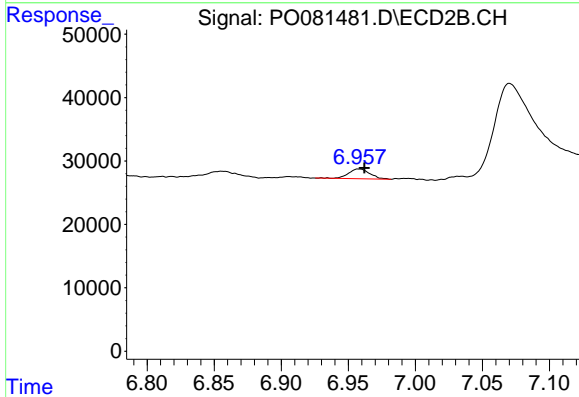
R.T.: 6.717 min  
 Delta R.T.: -0.004 min  
 Response: 25831  
 Conc: 12.99 ng/ml



#29 AR-1254-4

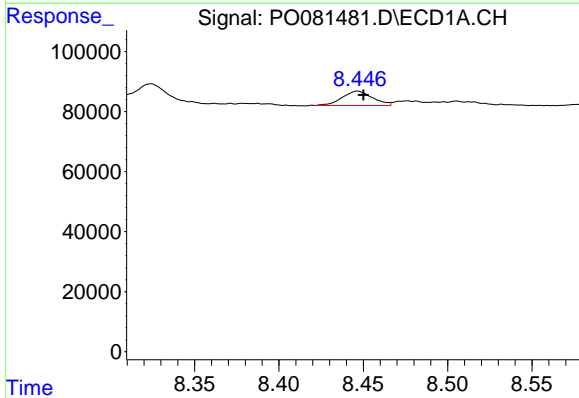
R.T.: 8.018 min  
 Delta R.T.: -0.003 min  
 Response: 64089  
 Conc: 15.59 ng/ml

Instrument :  
 ECD\_O  
 ClientSampleId :  
 20883



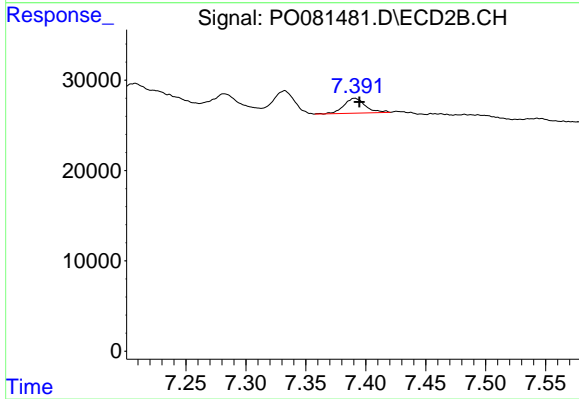
#29 AR-1254-4

R.T.: 6.958 min  
 Delta R.T.: -0.004 min  
 Response: 16898  
 Conc: 13.53 ng/ml



#30 AR-1254-5

R.T.: 8.446 min  
 Delta R.T.: -0.004 min  
 Response: 60678  
 Conc: 13.16 ng/ml m



#30 AR-1254-5

R.T.: 7.391 min  
 Delta R.T.: -0.004 min  
 Response: 20599  
 Conc: 11.02 ng/ml