

Data Path : Z:\pestpcbsrv\HPCHEM1\ECD_0\Data\P0092421\
 Data File : P0081489.D
 Signal(s) : Signal #1: ECD1A.CH Signal #2: ECD2B.CH
 Acq On : 24 Sep 2021 15:28
 Operator : AJ\MA
 Sample : AR1254CCC500
 Misc :
 ALS Vial : 6 Sample Multiplier: 1

Instrument :
 ECD_0
 ClientSampleId :
 AR1254CCC500

Integration File signal 1: autoint1.e
 Integration File signal 2: autoint2.e
 Quant Time: Sep 25 01:16:55 2021
 Quant Method : Z:\pestpcbsrv\HPCHEM1\ECD_0\methods\P0092321.M
 Quant Title : GC EXTRACTABLES
 QLast Update : Fri Sep 24 02:21:54 2021
 Response via : Initial Calibration
 Integrator: ChemStation 6890 Scale Mode: Small noise peaks clipped

Volume Inj. : 2 µl
 Signal #1 Phase : ZB-MR1 Signal #2 Phase: ZB-MR2
 Signal #1 Info : 30Mx0.32mmx 0.50µ Signal #2 Info : 30M x 0.32mm x 0.25µm

| Compound | RT#1 | RT#2 | Resp#1 | Resp#2 | ng/ml | ng/ml |
|-----------------------------|--------|-------|---------|---------|---------|---------|
| ----- | | | | | | |
| System Monitoring Compounds | | | | | | |
| 1) SA Tetrachlo... | 4.871 | 3.985 | 4848279 | 1390306 | 54.368 | 52.185 |
| 2) SA Decachlor... | 10.882 | 9.334 | 4122907 | 1243729 | 55.350 | 53.556 |
| Target Compounds | | | | | | |
| 26) L6 AR-1254-1 | 7.110 | 6.134 | 1949692 | 746292 | 543.775 | 487.373 |
| 27) L6 AR-1254-2 | 7.340 | 6.294 | 2792843 | 686879 | 506.509 | 504.857 |
| 28) L6 AR-1254-3 | 7.723 | 6.719 | 3017435 | 998420 | 534.767 | 501.928 |
| 29) L6 AR-1254-4 | 8.021 | 6.960 | 2186461 | 596229 | 531.717 | 477.504 |
| 30) L6 AR-1254-5 | 8.449 | 7.392 | 2381388 | 932046 | 516.639 | 498.575 |
| ----- | | | | | | |

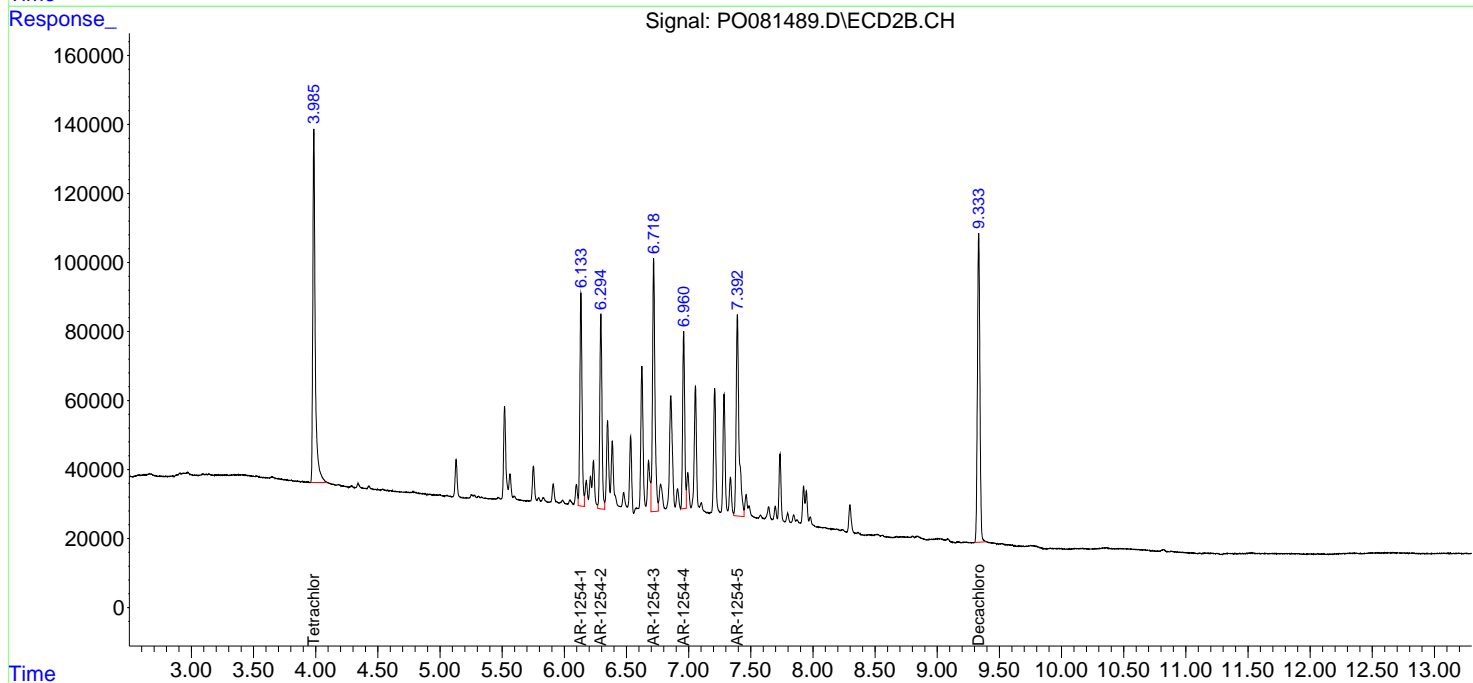
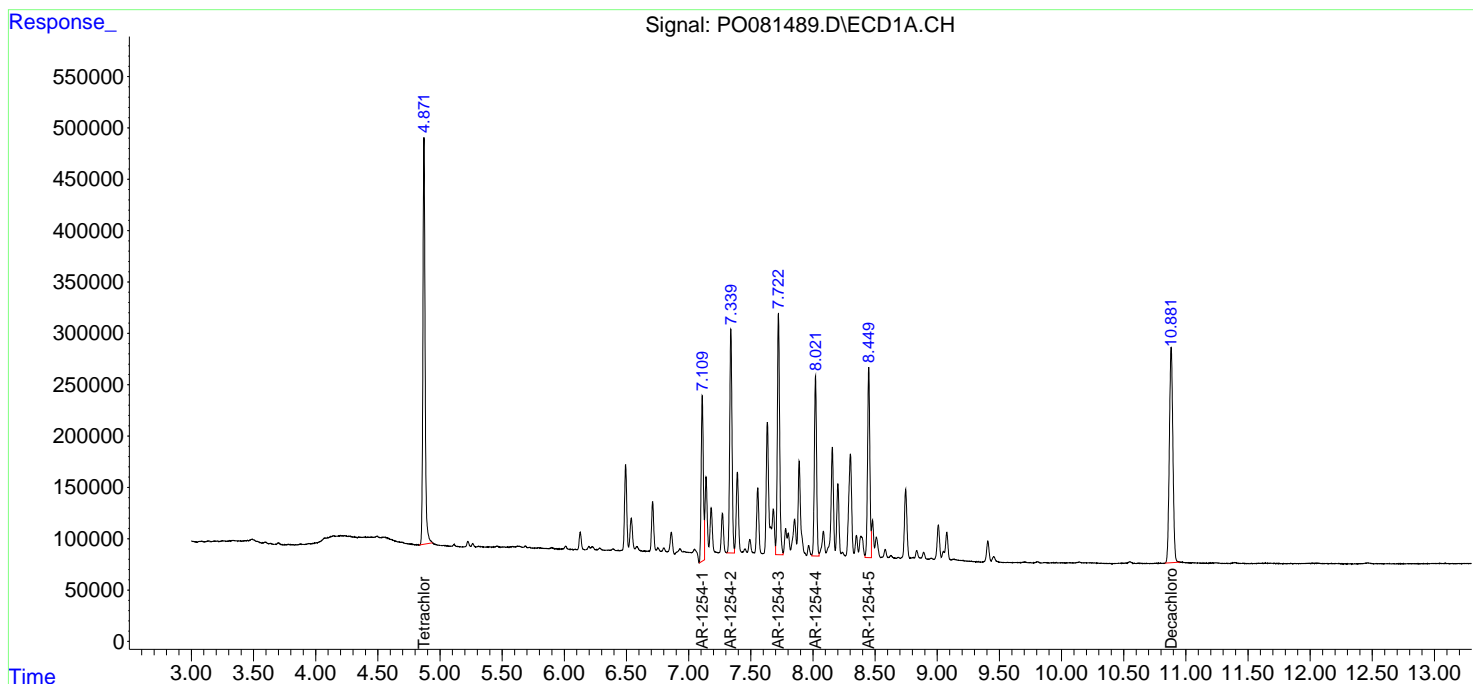
(f)=RT Delta > 1/2 Window (#)=Amounts differ by > 25% (m)=manual int.

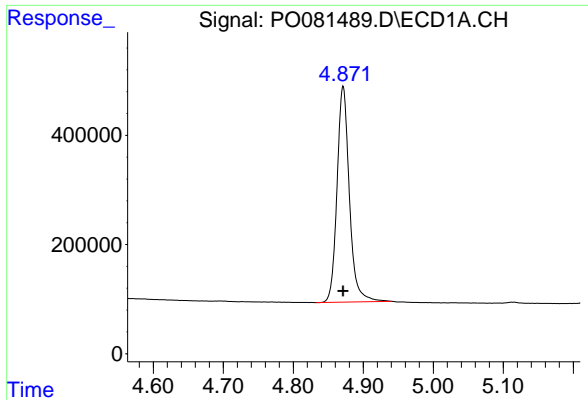
Data Path : Z:\pestpcbsrv\HPCHEM1\ECD_0\Data\P0092421\
 Data File : P0081489.D
 Signal(s) : Signal #1: ECD1A.CH Signal #2: ECD2B.CH
 Acq On : 24 Sep 2021 15:28
 Operator : AJ\MA
 Sample : AR1254CCC500
 Misc :
 ALS Vial : 6 Sample Multiplier: 1

Instrument :
 ECD_O
 ClientSampled :
 AR1254CCC500

Integration File signal 1: autoint1.e
 Integration File signal 2: autoint2.e
 Quant Time: Sep 25 01:16:55 2021
 Quant Method : Z:\pestpcbsrv\HPCHEM1\ECD_0\methods\P0092321.M
 Quant Title : GC EXTRACTABLES
 QLast Update : Fri Sep 24 02:21:54 2021
 Response via : Initial Calibration
 Integrator: ChemStation 6890 Scale Mode: Small noise peaks clipped

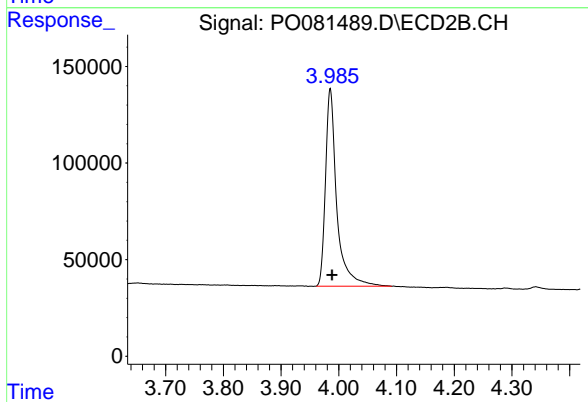
Volume Inj. : 2 µl
 Signal #1 Phase : ZB-MR1 Signal #2 Phase: ZB-MR2
 Signal #1 Info : 30Mx0.32mmx 0.50µ Signal #2 Info : 30M x 0.32mm x 0.25µm



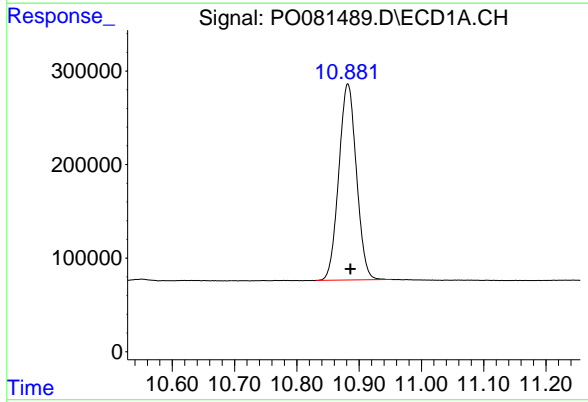


#1 Tetrachloro-m-xylene
 R.T.: 4.871 min
 Delta R.T.: 0.000 min
 Response: 4848279
 Conc: 54.37 ng/ml

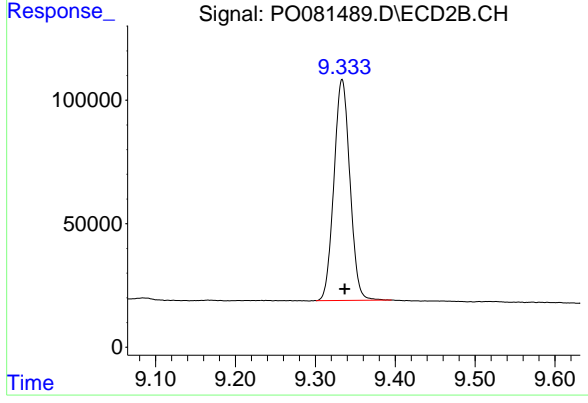
Instrument :
 ECD_O
 ClientSampleId :
 AR1254CCC500



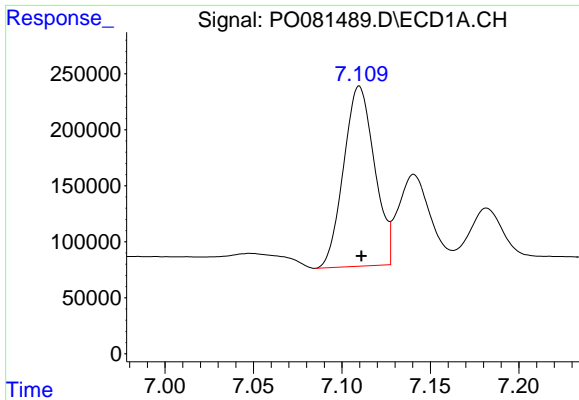
#1 Tetrachloro-m-xylene
 R.T.: 3.985 min
 Delta R.T.: -0.003 min
 Response: 1390306
 Conc: 52.18 ng/ml



#2 Decachlorobiphenyl
 R.T.: 10.882 min
 Delta R.T.: -0.004 min
 Response: 4122907
 Conc: 55.35 ng/ml



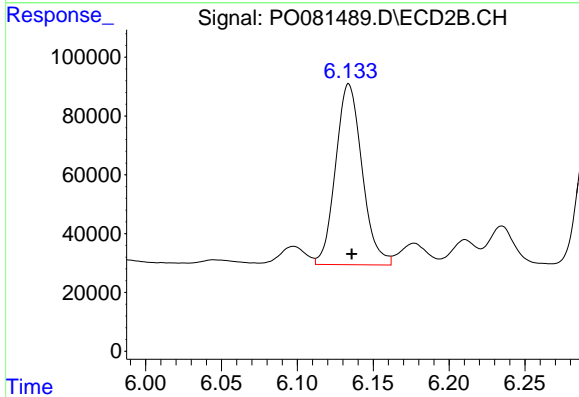
#2 Decachlorobiphenyl
 R.T.: 9.334 min
 Delta R.T.: -0.003 min
 Response: 1243729
 Conc: 53.56 ng/ml



#26 AR-1254-1

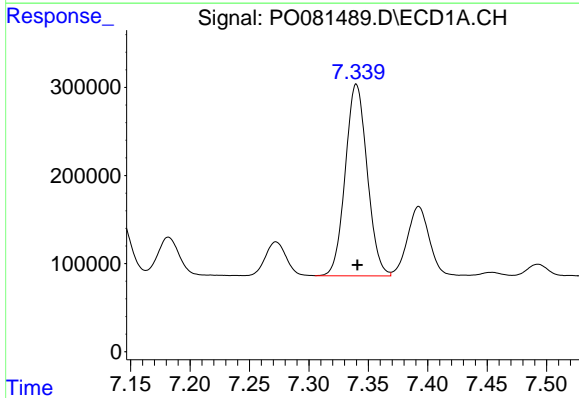
R.T.: 7.110 min
 Delta R.T.: -0.001 min
 Response: 1949692
 Conc: 543.78 ng/ml

Instrument :
 ECD_O
 ClientSampleId :
 AR1254CCC500



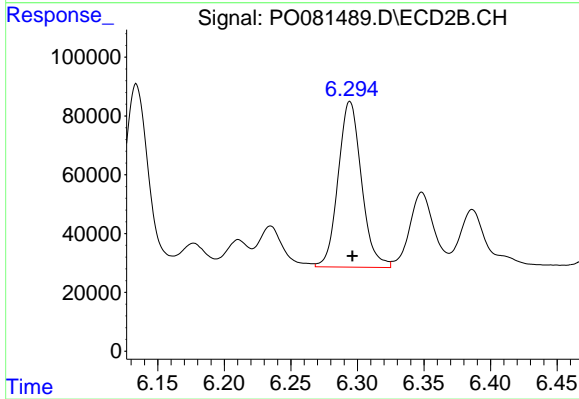
#26 AR-1254-1

R.T.: 6.134 min
 Delta R.T.: -0.002 min
 Response: 746292
 Conc: 487.37 ng/ml



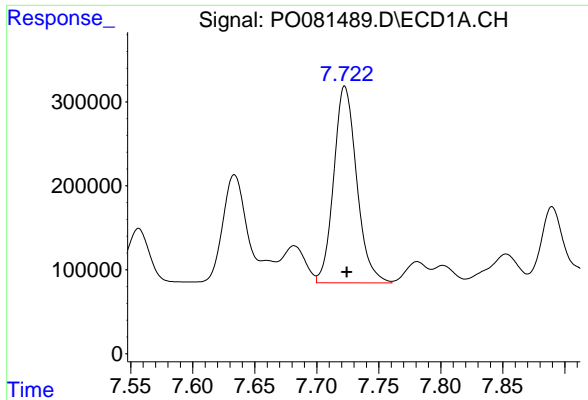
#27 AR-1254-2

R.T.: 7.340 min
 Delta R.T.: 0.000 min
 Response: 2792843
 Conc: 506.51 ng/ml



#27 AR-1254-2

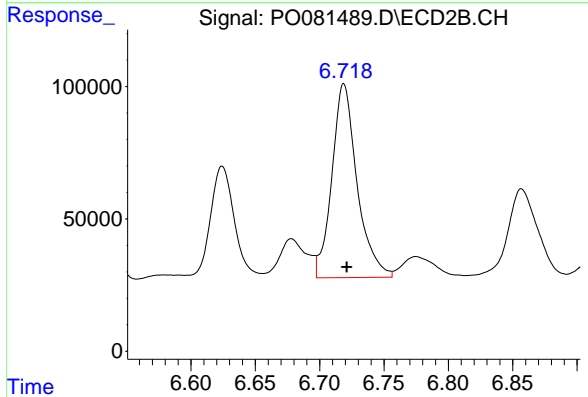
R.T.: 6.294 min
 Delta R.T.: -0.002 min
 Response: 686879
 Conc: 504.86 ng/ml



#28 AR-1254-3

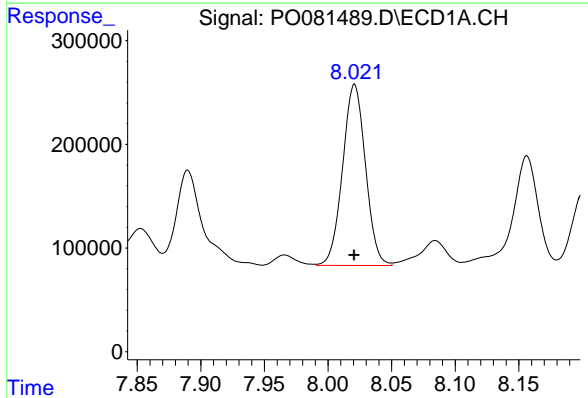
R.T.: 7.723 min
 Delta R.T.: -0.001 min
 Response: 3017435
 Conc: 534.77 ng/ml

Instrument :
 ECD_O
 ClientSampleId :
 AR1254CCC500



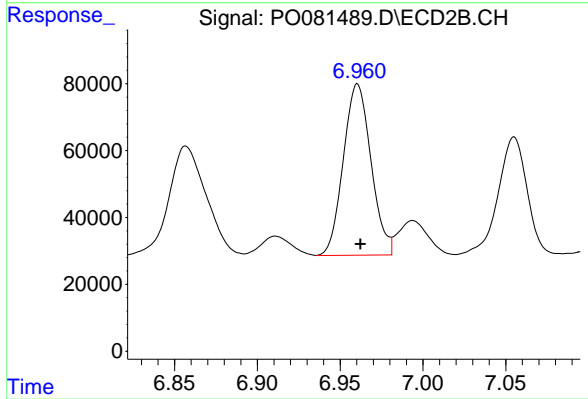
#28 AR-1254-3

R.T.: 6.719 min
 Delta R.T.: -0.002 min
 Response: 998420
 Conc: 501.93 ng/ml



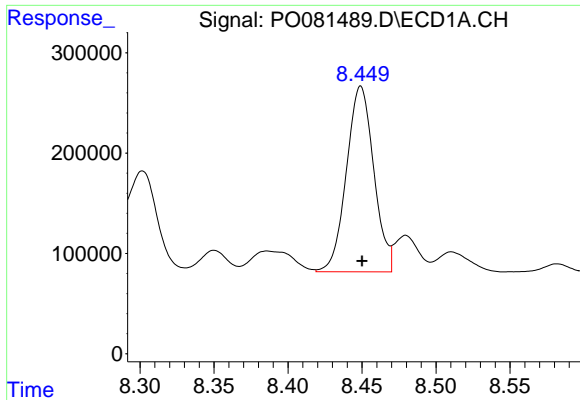
#29 AR-1254-4

R.T.: 8.021 min
 Delta R.T.: 0.000 min
 Response: 2186461
 Conc: 531.72 ng/ml



#29 AR-1254-4

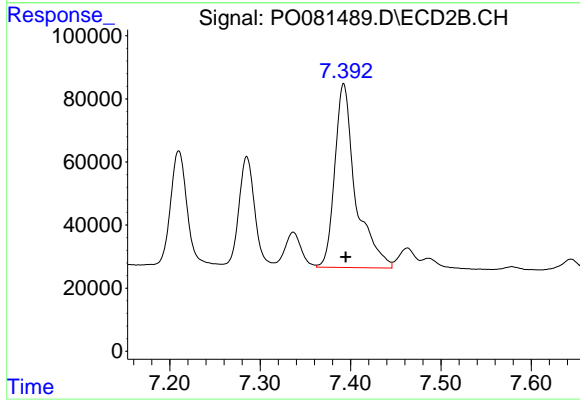
R.T.: 6.960 min
 Delta R.T.: -0.002 min
 Response: 596229
 Conc: 477.50 ng/ml



#30 AR-1254-5

R.T.: 8.449 min
Delta R.T.: 0.000 min
Response: 2381388
Conc: 516.64 ng/ml

Instrument :
ECD_O
ClientSampleId :
AR1254CCC500



#30 AR-1254-5

R.T.: 7.392 min
Delta R.T.: -0.002 min
Response: 932046
Conc: 498.57 ng/ml