

Data Path : Z:\pestpcbsrv\HPCHEM1\ECD_0\Data\P0092421\
 Data File : P0081554.D
 Signal(s) : Signal #1: ECD1A.CH Signal #2: ECD2B.CH
 Acq On : 25 Sep 2021 16:51
 Operator : AJ\MA
 Sample : AR1660CCC500
 Misc :
 ALS Vial : 3 Sample Multiplier: 1

Instrument :
 ECD_0
 ClientSampleId :
 AR1660CCC500

Integration File signal 1: autoint1.e
 Integration File signal 2: autoint2.e
 Quant Time: Sep 27 01:33:16 2021
 Quant Method : Z:\pestpcbsrv\HPCHEM1\ECD_0\methods\P0092321.M
 Quant Title : GC EXTRACTABLES
 QLast Update : Fri Sep 24 02:21:54 2021
 Response via : Initial Calibration
 Integrator: ChemStation 6890 Scale Mode: Small noise peaks clipped

Volume Inj. : 2 µl
 Signal #1 Phase : ZB-MR2 Signal #2 Phase: ZB-MR2
 Signal #1 Info : 30Mx0.32mmx 0.50µ Signal #2 Info : 30M x 0.32mm x 0.25µm

Compound	RT#1	RT#2	Resp#1	Resp#2	ng/ml	ng/ml

System Monitoring Compounds						
1) SA Tetrachlo...	4.868	3.985	5160293	1463334	57.867	54.926
2) SA Decachlor...	10.878	9.331	3868494	1184458	51.935	51.004
Target Compounds						
3) L1 AR-1016-1	6.196	5.254	1840958	504278	568.610	559.736
4) L1 AR-1016-2	6.220	5.273	2618184	755713	564.835	553.400
5) L1 AR-1016-3	6.286	5.467	1624885	398046	567.550	561.436
6) L1 AR-1016-4	6.393	5.519	1333309	338585	579.638	546.613
7) L1 AR-1016-5	6.708	5.751	1335250	342844	586.743	485.603
31) L7 AR-1260-1	7.887	6.855	2217201	748870	524.503m	536.435
32) L7 AR-1260-2	8.155	7.054	2487329	895173	479.214m	547.731
33) L7 AR-1260-3	8.520	7.210	1713303	787134	528.760	473.352
34) L7 AR-1260-4	8.751	7.696	2027748	601822	508.712	541.475
35) L7 AR-1260-5	9.075	7.946	3757751	1302702	507.246	527.494

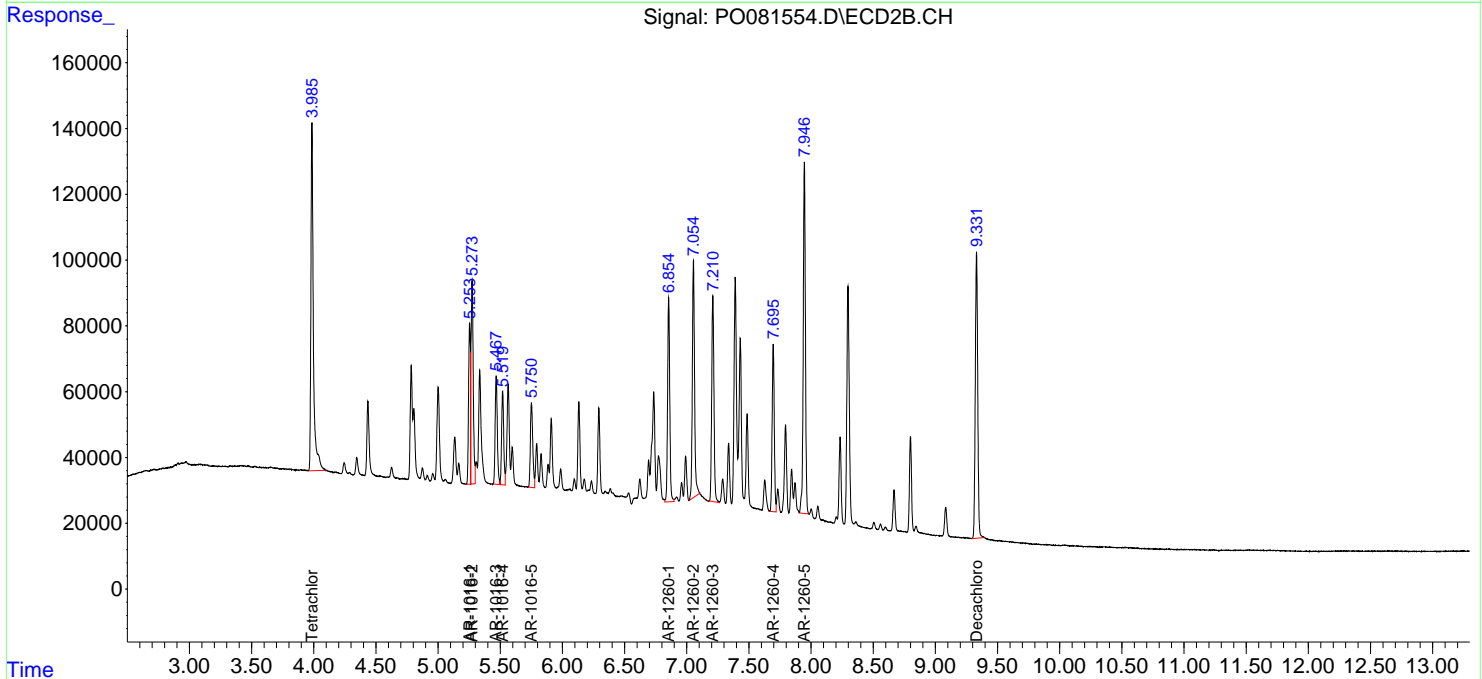
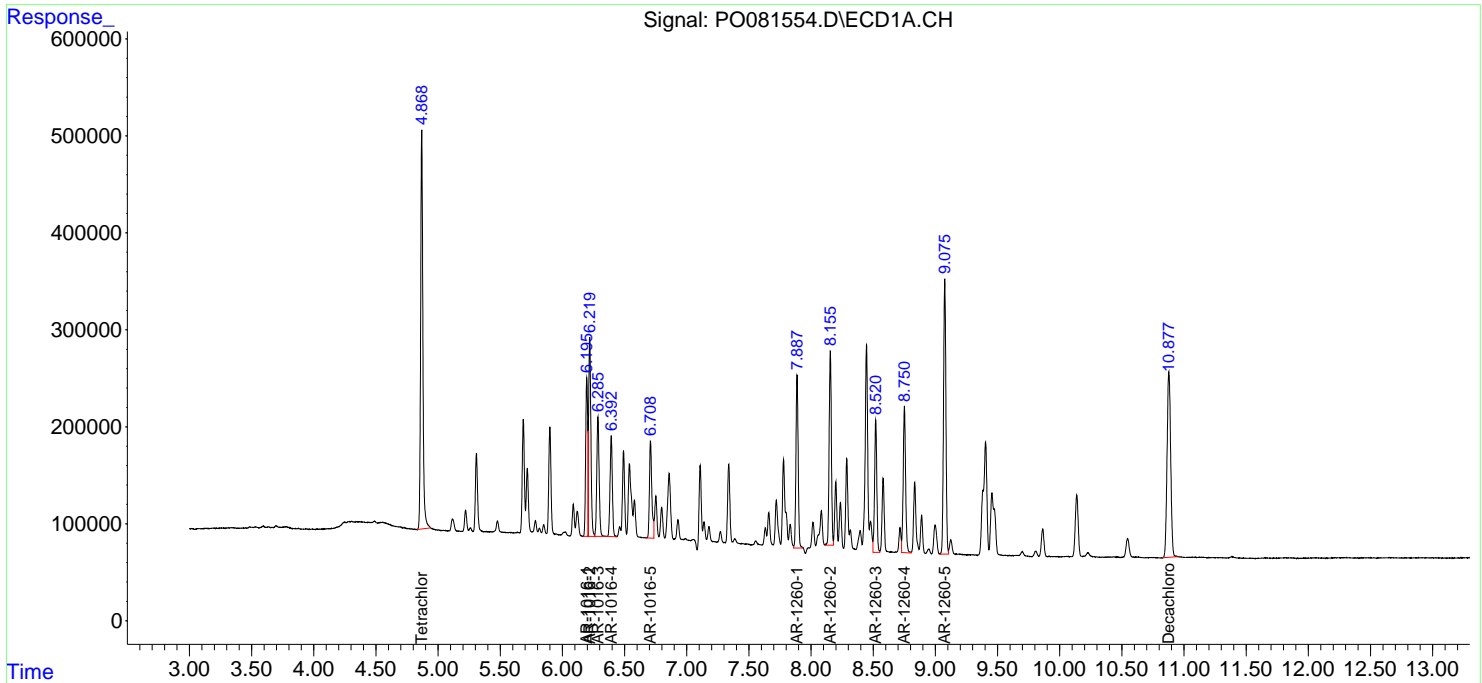
(f)=RT Delta > 1/2 Window (#)=Amounts differ by > 25% (m)=manual int.

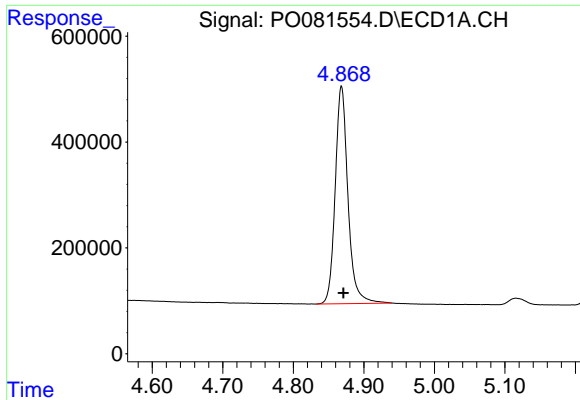
Data Path : Z:\pestpcbsrv\HPCHEM1\ECD_0\Data\P0092421\
 Data File : P0081554.D
 Signal(s) : Signal #1: ECD1A.CH Signal #2: ECD2B.CH
 Acq On : 25 Sep 2021 16:51
 Operator : AJ\MA
 Sample : AR1660CCC500
 Misc :
 ALS Vial : 3 Sample Multiplier: 1

Instrument :
 ECD_O
 ClientSampled :
 AR1660CCC500

Integration File signal 1: autoint1.e
 Integration File signal 2: autoint2.e
 Quant Time: Sep 27 01:33:16 2021
 Quant Method : Z:\pestpcbsrv\HPCHEM1\ECD_0\methods\P0092321.M
 Quant Title : GC EXTRACTABLES
 QLast Update : Fri Sep 24 02:21:54 2021
 Response via : Initial Calibration
 Integrator: ChemStation 6890 Scale Mode: Small noise peaks clipped

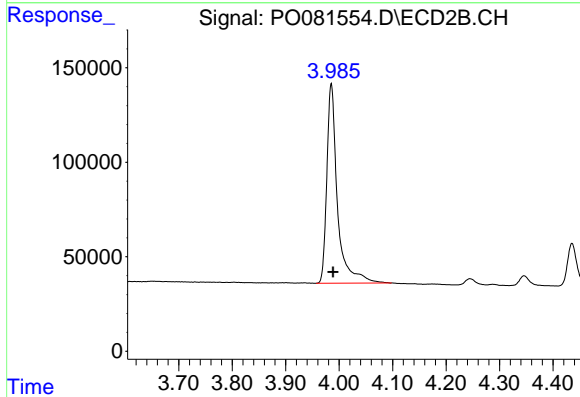
Volume Inj. : 2 µl
 Signal #1 Phase : ZB-MR1 Signal #2 Phase: ZB-MR2
 Signal #1 Info : 30Mx0.32mmx 0.50µ Signal #2 Info : 30M x 0.32mm x 0.25µm



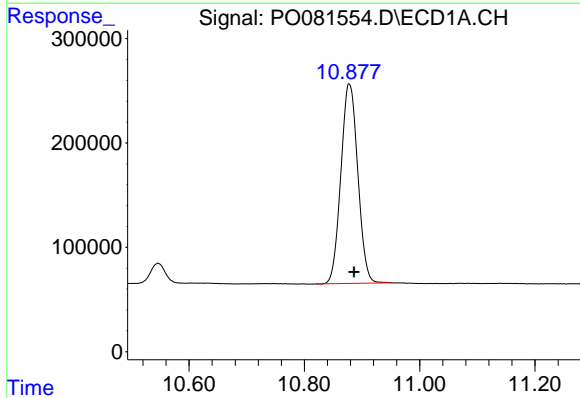


#1 Tetrachloro-m-xylene
 R.T.: 4.868 min
 Delta R.T.: -0.003 min
 Response: 5160293
 Conc: 57.87 ng/ml

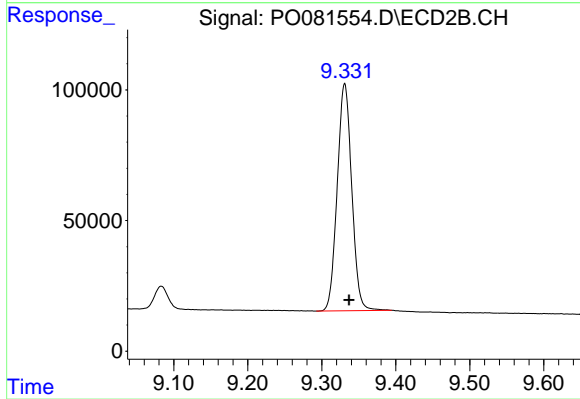
Instrument :
 ECD_O
 ClientSampleId :
 AR1660CCC500



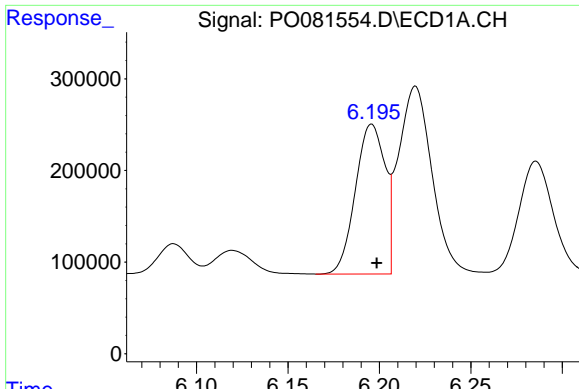
#1 Tetrachloro-m-xylene
 R.T.: 3.985 min
 Delta R.T.: -0.003 min
 Response: 1463334
 Conc: 54.93 ng/ml



#2 Decachlorobiphenyl
 R.T.: 10.878 min
 Delta R.T.: -0.008 min
 Response: 3868494
 Conc: 51.93 ng/ml



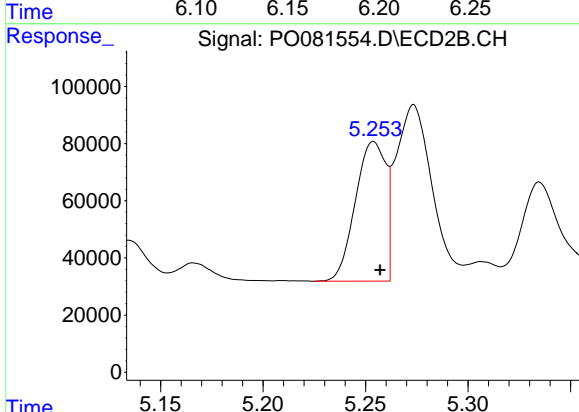
#2 Decachlorobiphenyl
 R.T.: 9.331 min
 Delta R.T.: -0.006 min
 Response: 1184458
 Conc: 51.00 ng/ml



#3 AR-1016-1

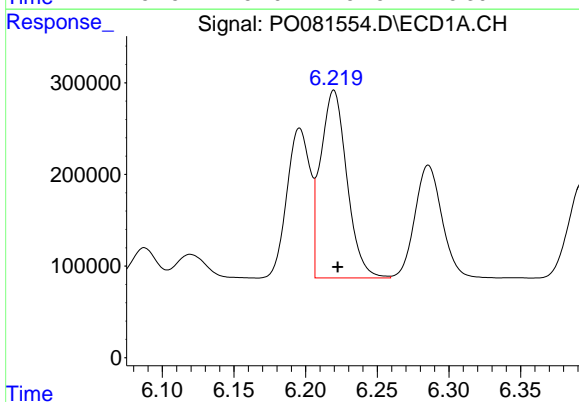
R.T.: 6.196 min
 Delta R.T.: -0.003 min
 Response: 1840958
 Conc: 568.61 ng/ml

Instrument :
 ECD_O
 ClientSampled :
 AR1660CCC500



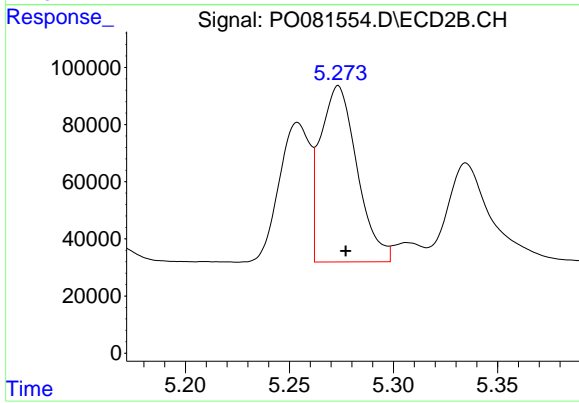
#3 AR-1016-1

R.T.: 5.254 min
 Delta R.T.: -0.003 min
 Response: 504278
 Conc: 559.74 ng/ml



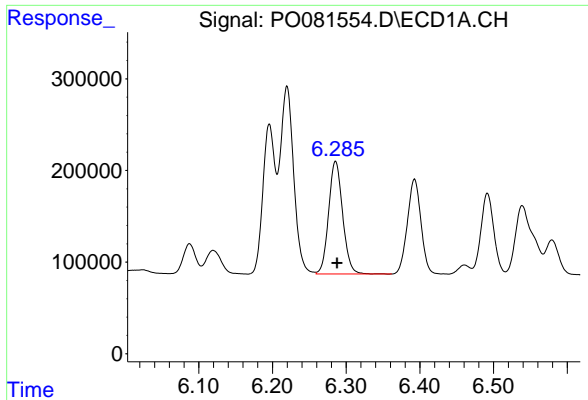
#4 AR-1016-2

R.T.: 6.220 min
 Delta R.T.: -0.003 min
 Response: 2618184
 Conc: 564.84 ng/ml



#4 AR-1016-2

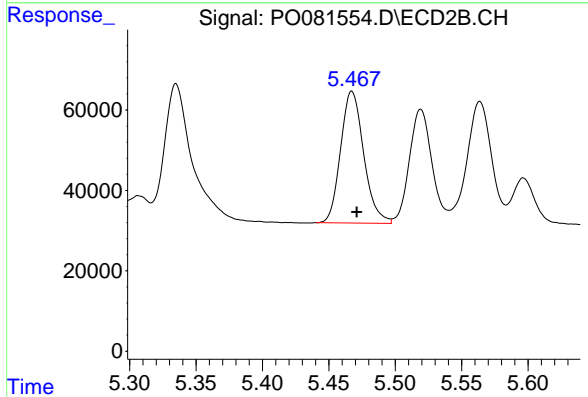
R.T.: 5.273 min
 Delta R.T.: -0.004 min
 Response: 755713
 Conc: 553.40 ng/ml



#5 AR-1016-3

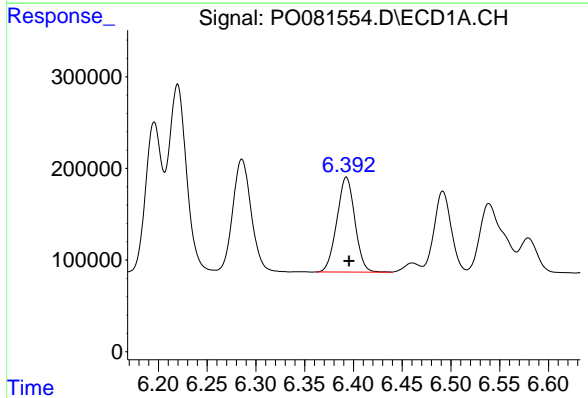
R.T.: 6.286 min
 Delta R.T.: -0.002 min
 Response: 1624885
 Conc: 567.55 ng/ml

Instrument :
 ECD_O
 ClientSampleId :
 AR1660CCC500



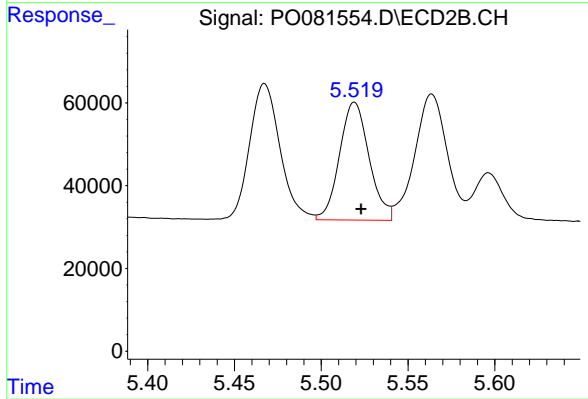
#5 AR-1016-3

R.T.: 5.467 min
 Delta R.T.: -0.004 min
 Response: 398046
 Conc: 561.44 ng/ml



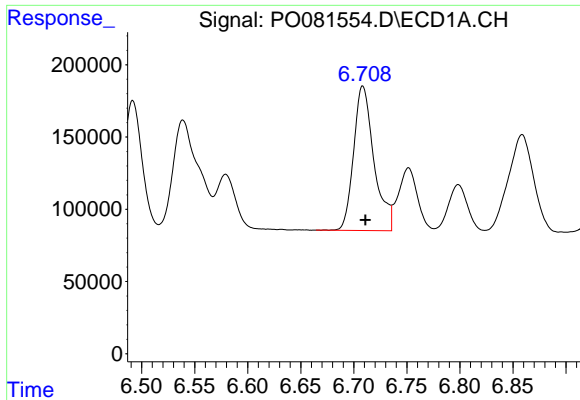
#6 AR-1016-4

R.T.: 6.393 min
 Delta R.T.: -0.003 min
 Response: 1333309
 Conc: 579.64 ng/ml



#6 AR-1016-4

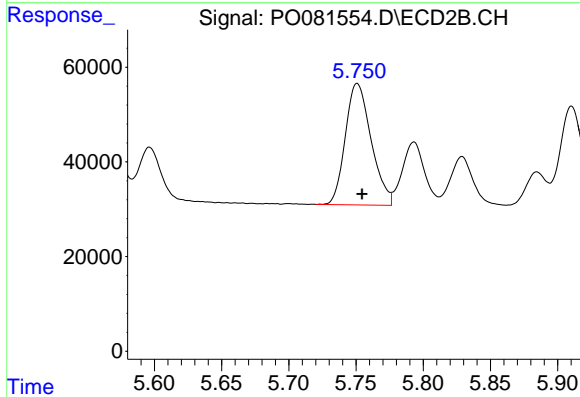
R.T.: 5.519 min
 Delta R.T.: -0.004 min
 Response: 338585
 Conc: 546.61 ng/ml



#7 AR-1016-5

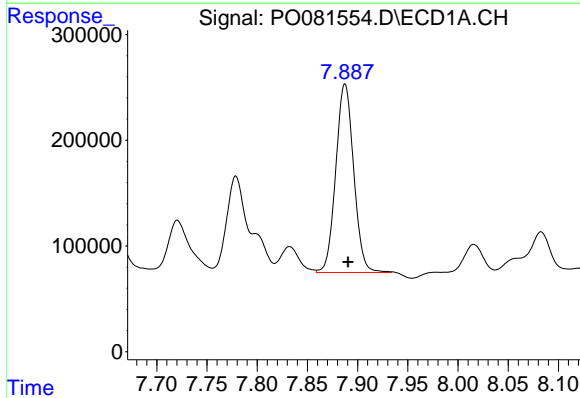
R.T.: 6.708 min
 Delta R.T.: -0.003 min
 Response: 1335250
 Conc: 586.74 ng/ml

Instrument :
 ECD_O
 ClientSampleId :
 AR1660CCC500



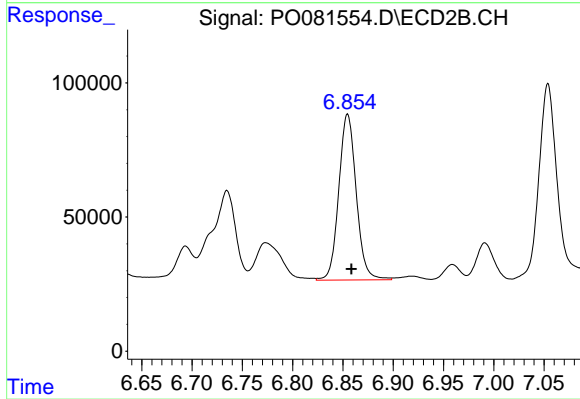
#7 AR-1016-5

R.T.: 5.751 min
 Delta R.T.: -0.004 min
 Response: 342844
 Conc: 485.60 ng/ml



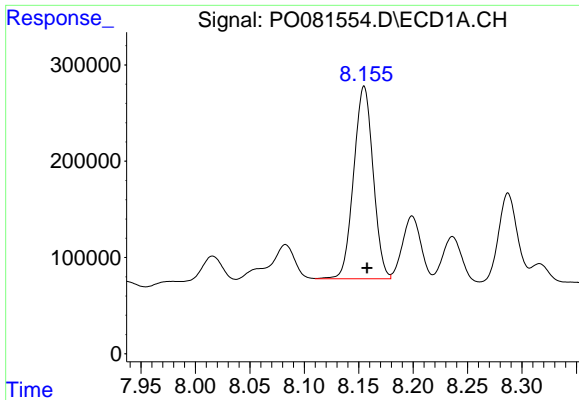
#31 AR-1260-1

R.T.: 7.887 min
 Delta R.T.: -0.004 min
 Response: 2217201
 Conc: 524.50 ng/ml m



#31 AR-1260-1

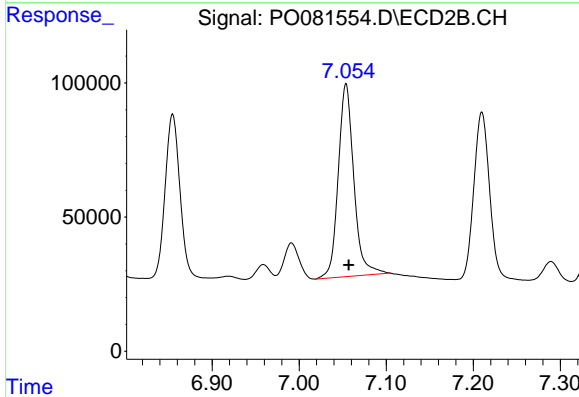
R.T.: 6.855 min
 Delta R.T.: -0.004 min
 Response: 748870
 Conc: 536.44 ng/ml



#32 AR-1260-2

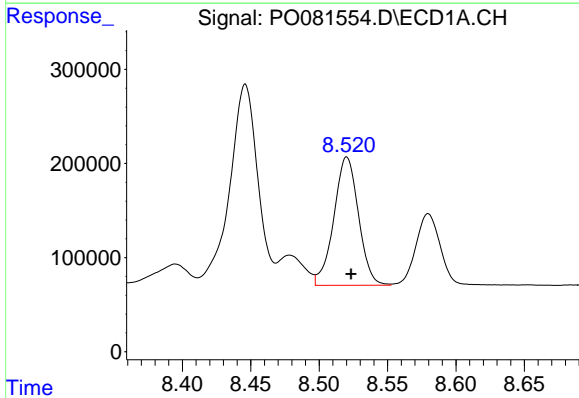
R.T.: 8.155 min
 Delta R.T.: -0.003 min
 Response: 2487329
 Conc: 479.21 ng/ml m

Instrument :
 ECD_O
 ClientSampleId :
 AR1660CCC500



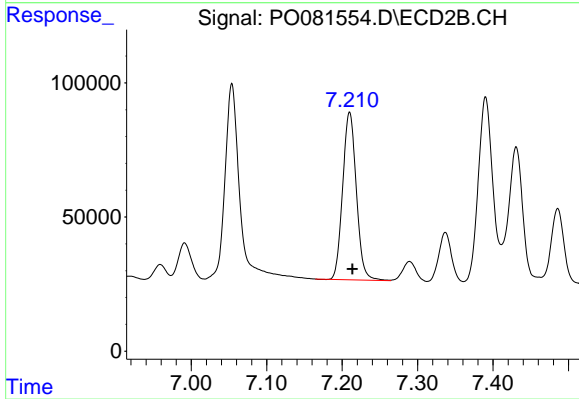
#32 AR-1260-2

R.T.: 7.054 min
 Delta R.T.: -0.003 min
 Response: 895173
 Conc: 547.73 ng/ml



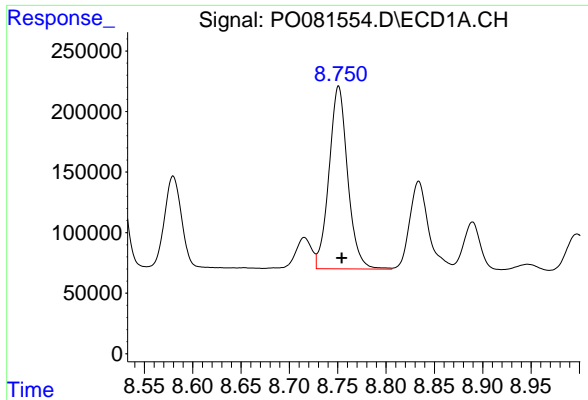
#33 AR-1260-3

R.T.: 8.520 min
 Delta R.T.: -0.003 min
 Response: 1713303
 Conc: 528.76 ng/ml



#33 AR-1260-3

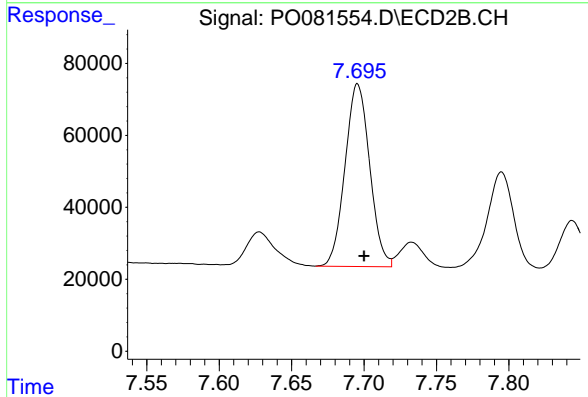
R.T.: 7.210 min
 Delta R.T.: -0.004 min
 Response: 787134
 Conc: 473.35 ng/ml



#34 AR-1260-4

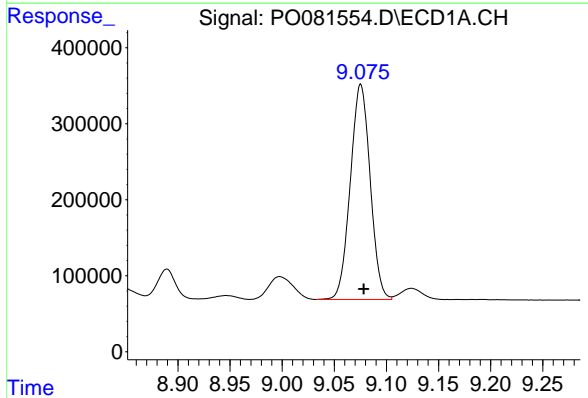
R.T.: 8.751 min
 Delta R.T.: -0.003 min
 Response: 2027748
 Conc: 508.71 ng/ml

Instrument :
 ECD_O
 ClientSampleId :
 AR1660CCC500



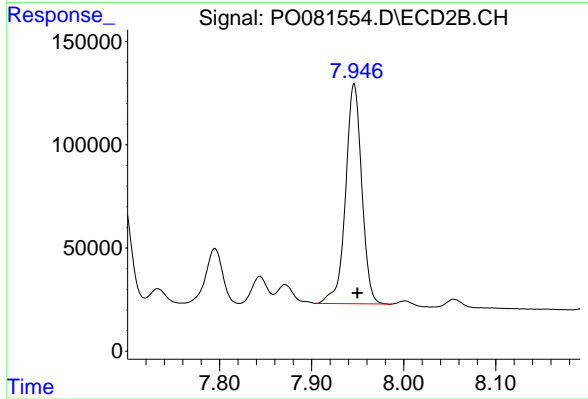
#34 AR-1260-4

R.T.: 7.696 min
 Delta R.T.: -0.004 min
 Response: 601822
 Conc: 541.47 ng/ml



#35 AR-1260-5

R.T.: 9.075 min
 Delta R.T.: -0.003 min
 Response: 3757751
 Conc: 507.25 ng/ml



#35 AR-1260-5

R.T.: 7.946 min
 Delta R.T.: -0.004 min
 Response: 1302702
 Conc: 527.49 ng/ml