

Data Path : Z:\pestpcbsrv\HPCHEM1\ECD\_0\Data\P0092520\  
 Data File : P0071626.D  
 Signal(s) : Signal #1: ECD1A.CH Signal #2: ECD2B.CH  
 Acq On : 25 Sep 2020 13:13  
 Operator : DD\AJ  
 Sample : L4129-01  
 Misc :  
 ALS Vial : 7 Sample Multiplier: 1

Instrument :  
 ECD\_0  
 ClientSampleId :  
 32648

Integration File signal 1: autoint1.e  
 Integration File signal 2: autoint2.e  
 Quant Time: Sep 28 09:44:45 2020  
 Quant Method : Z:\pestpcbsrv\HPCHEM1\ECD\_0\methods\P0092320.M  
 Quant Title : GC EXTRACTABLES  
 QLast Update : Wed Sep 23 08:07:44 2020  
 Response via : Initial Calibration  
 Integrator: ChemStation 6890 Scale Mode: Small noise peaks clipped

Volume Inj. : 2 µl  
 Signal #1 Phase : ZB-MR2 Signal #2 Phase: ZB-MR2  
 Signal #1 Info : 30Mx0.32mmx 0.50µ Signal #2 Info : 30M x 0.32mm x 0.25µm

Compound	RT#1	RT#2	Resp#1	Resp#2	ng/ml	ng/ml
-----						
System Monitoring Compounds						
1) SA Tetrachlo...	4.338	3.524	1509168	593634	17.587	14.414
2) SA Decachlor...	9.948	8.698	1880256	866854	16.366	14.261
Target Compounds						
16) L4 AR-1242-1	5.643	4.748	40612266	19780791	15802.426	15759.029
17) L4 AR-1242-2	5.665	4.766	55249221	27404101	14831.000	15652.349
18) L4 AR-1242-3	5.728	4.951	36538010	18432860	16254.990	19186.114
19) L4 AR-1242-4	5.835	5.050	37714100	19616353	20028.274	22462.202
20) L4 AR-1242-5	6.606	5.604	50373125	33239571	21974.641	26546.197
31) L7 AR-1260-1	7.299	6.309	3355442	4642799	590.504	1677.651 #
32) L7 AR-1260-2	7.566	6.507	6921868	2314423	797.321	654.793
33) L7 AR-1260-3	7.921	6.652	3435786	2192266	477.164	681.947 #
34) L7 AR-1260-4	8.147	7.128	4491645	1128124	677.952	391.008 #
35) L7 AR-1260-5	8.463	7.380	7316864	2994729	485.232	404.871

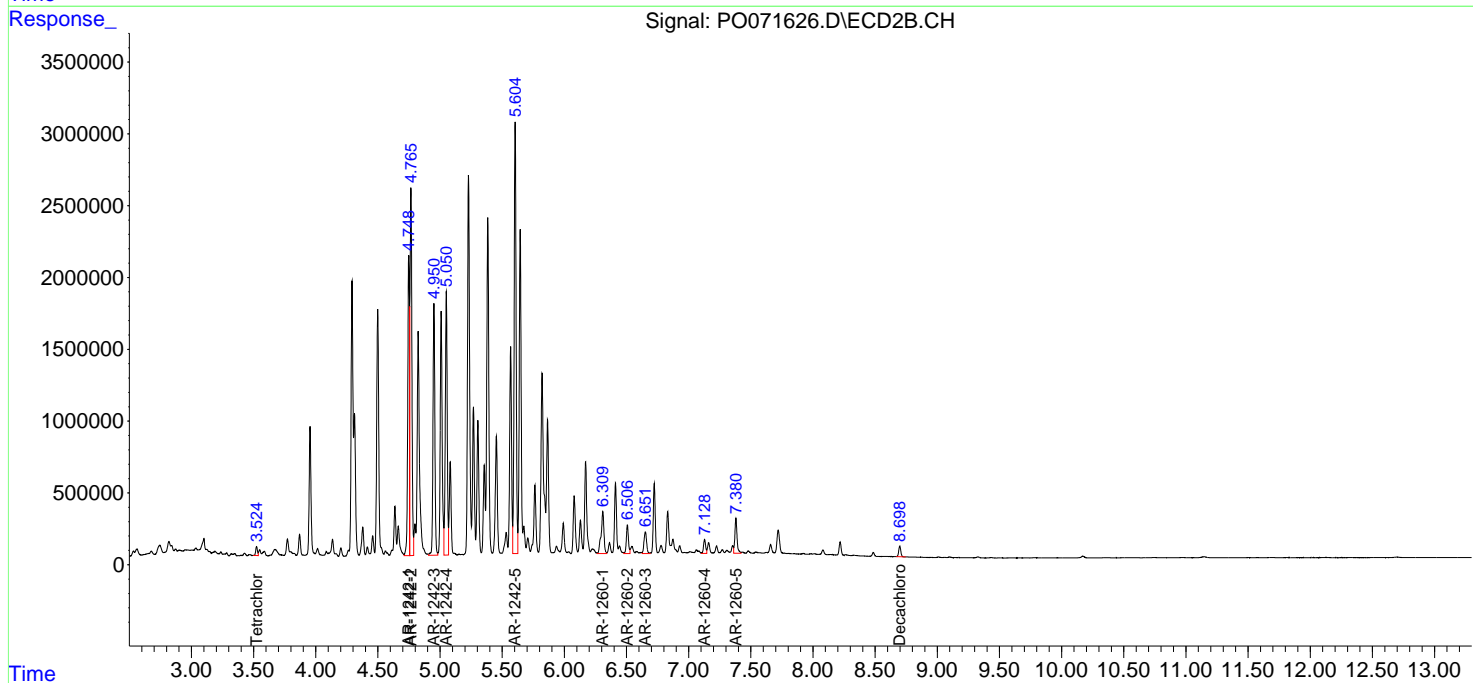
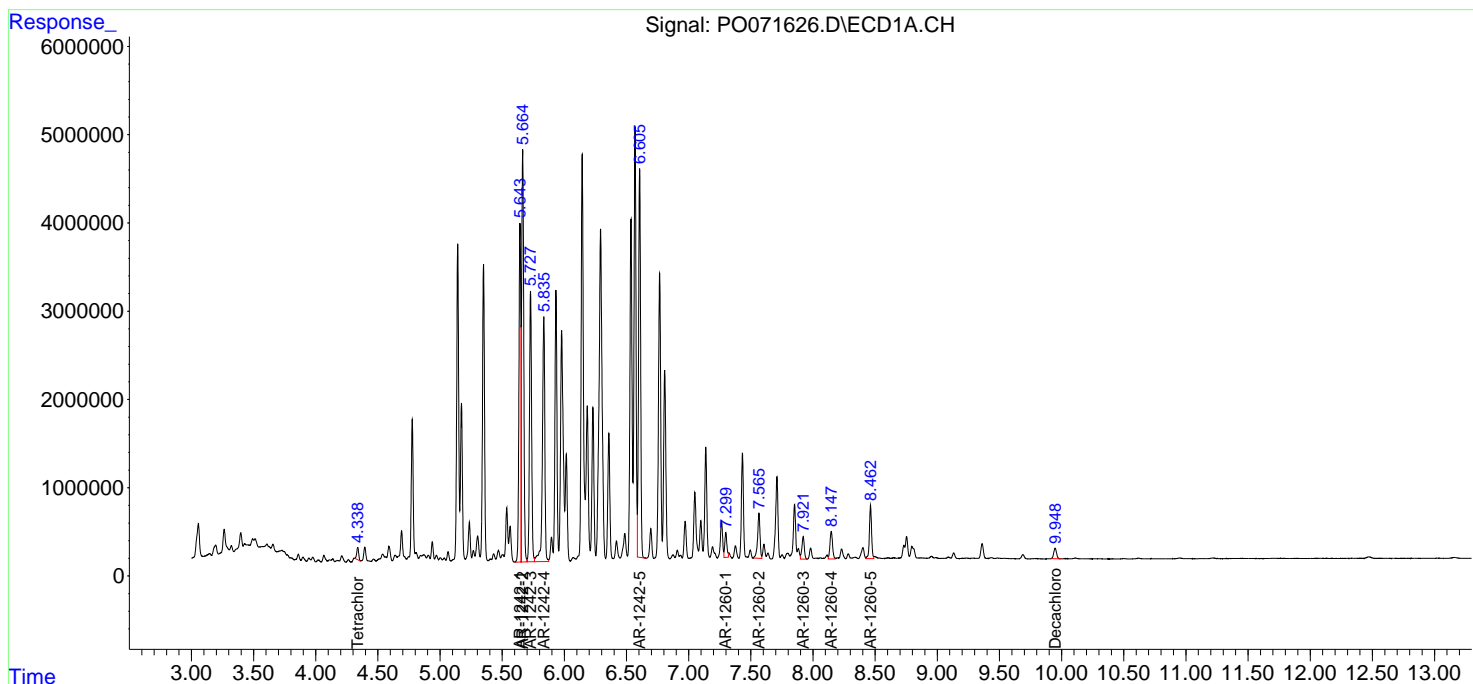
(f)=RT Delta > 1/2 Window (#)=Amounts differ by > 25% (m)=manual int.

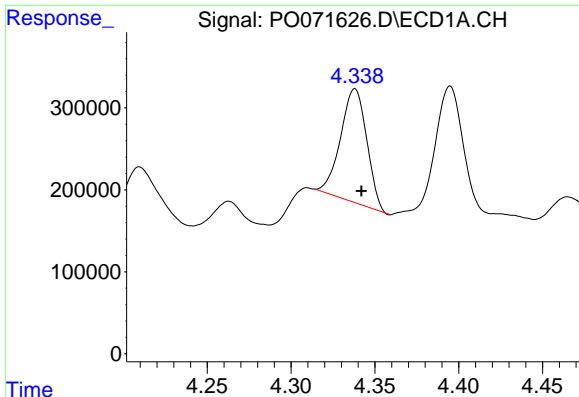
Data Path : Z:\pestpcbsrv\HPCHEM1\ECD\_O\Data\P0092520\  
 Data File : P0071626.D  
 Signal(s) : Signal #1: ECD1A.CH Signal #2: ECD2B.CH  
 Acq On : 25 Sep 2020 13:13  
 Operator : DD\AJ  
 Sample : L4129-01  
 Misc :  
 ALS Vial : 7 Sample Multiplier: 1

Instrument :  
 ECD\_O  
 ClientSampled :  
 32648

Integration File signal 1: autoint1.e  
 Integration File signal 2: autoint2.e  
 Quant Time: Sep 28 09:44:45 2020  
 Quant Method : Z:\pestpcbsrv\HPCHEM1\ECD\_O\methods\P0092320.M  
 Quant Title : GC EXTRACTABLES  
 QLast Update : Wed Sep 23 08:07:44 2020  
 Response via : Initial Calibration  
 Integrator: ChemStation 6890 Scale Mode: Small noise peaks clipped

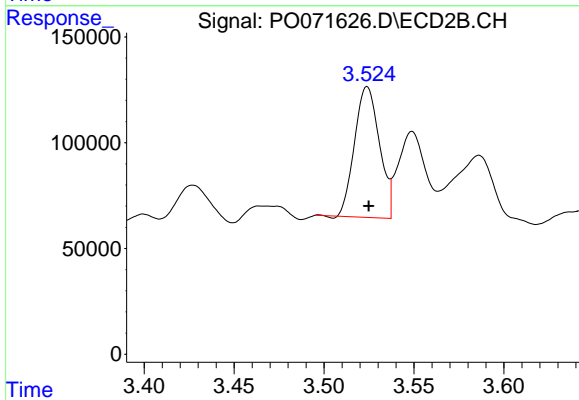
Volume Inj. : 2 µl  
 Signal #1 Phase : ZB-MR1 Signal #2 Phase: ZB-MR2  
 Signal #1 Info : 30Mx0.32mmx 0.50µ Signal #2 Info : 30M x 0.32mm x 0.25µm



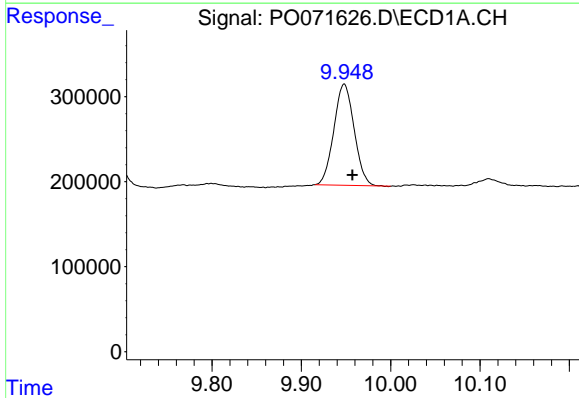


#1 Tetrachloro-m-xylene  
 R.T.: 4.338 min  
 Delta R.T.: -0.004 min  
 Response: 1509168  
 Conc: 17.59 ng/ml

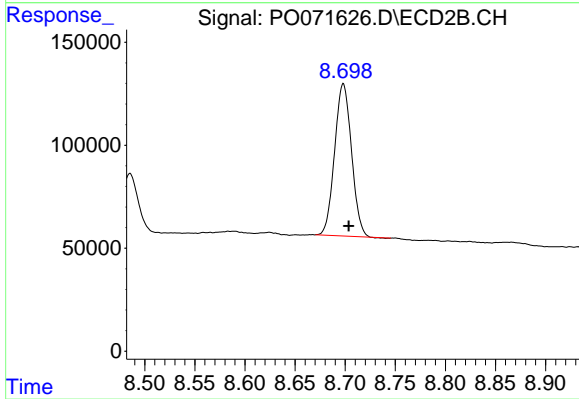
Instrument :  
 ECD\_O  
 ClientSampleId :  
 32648



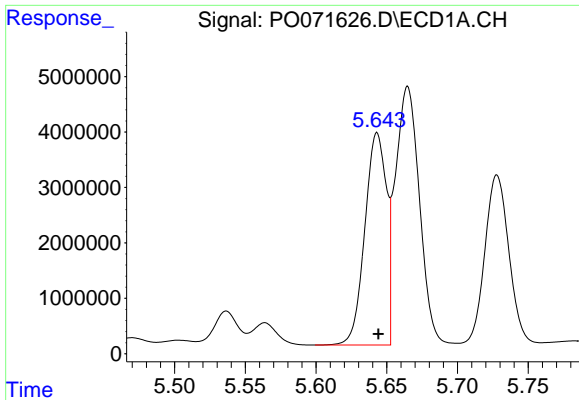
#1 Tetrachloro-m-xylene  
 R.T.: 3.524 min  
 Delta R.T.: 0.000 min  
 Response: 593634  
 Conc: 14.41 ng/ml



#2 Decachlorobiphenyl  
 R.T.: 9.948 min  
 Delta R.T.: -0.009 min  
 Response: 1880256  
 Conc: 16.37 ng/ml



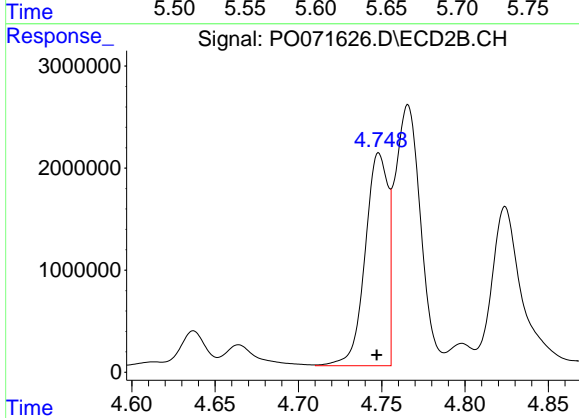
#2 Decachlorobiphenyl  
 R.T.: 8.698 min  
 Delta R.T.: -0.006 min  
 Response: 866854  
 Conc: 14.26 ng/ml



#16 AR-1242-1

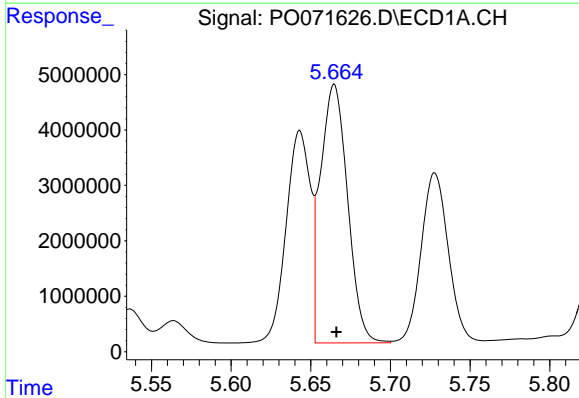
R.T.: 5.643 min  
 Delta R.T.: 0.000 min  
 Response: 40612266  
 Conc: 15802.43 ng/ml

**Instrument :**  
 ECD\_O  
**ClientSampled :**  
 32648



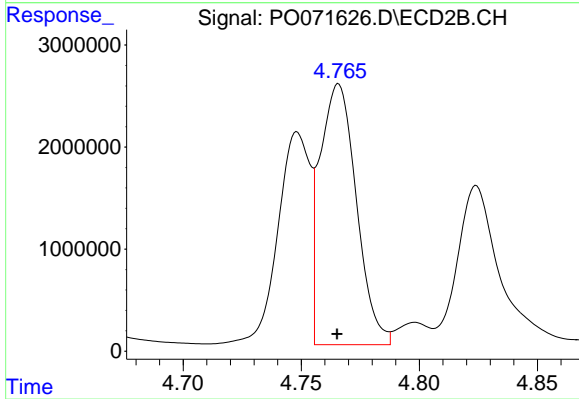
#16 AR-1242-1

R.T.: 4.748 min  
 Delta R.T.: 0.001 min  
 Response: 19780791  
 Conc: 15759.03 ng/ml



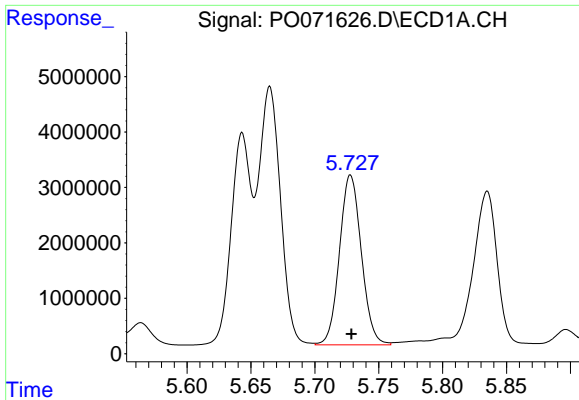
#17 AR-1242-2

R.T.: 5.665 min  
 Delta R.T.: -0.001 min  
 Response: 55249221  
 Conc: 14831.00 ng/ml



#17 AR-1242-2

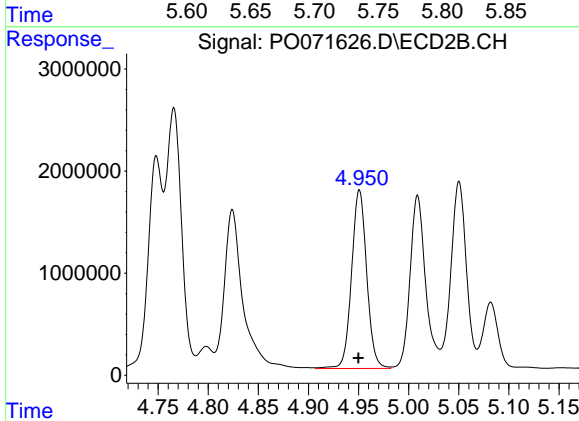
R.T.: 4.766 min  
 Delta R.T.: 0.000 min  
 Response: 27404101  
 Conc: 15652.35 ng/ml



#18 AR-1242-3

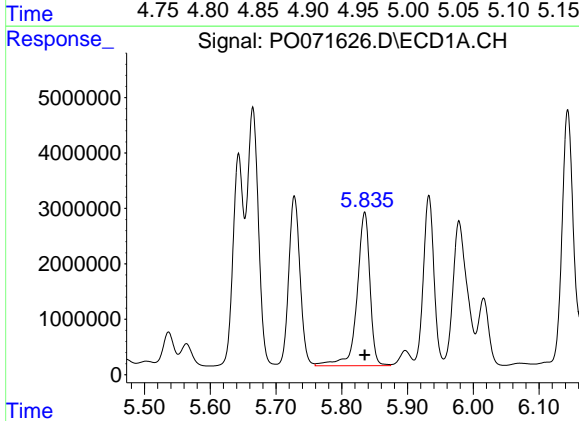
R.T.: 5.728 min  
 Delta R.T.: 0.000 min  
 Response: 36538010  
 Conc: 16254.99 ng/ml

Instrument :  
 ECD\_O  
 ClientSampled :  
 32648



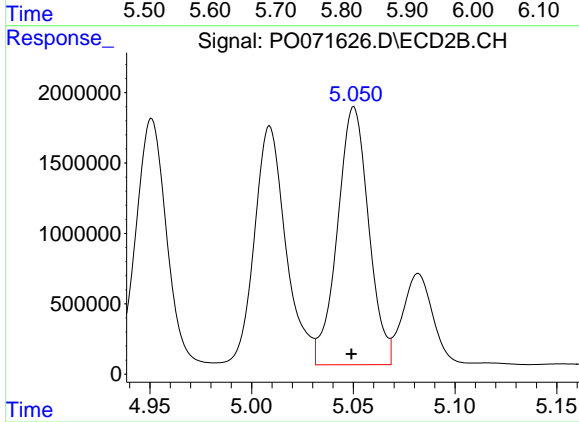
#18 AR-1242-3

R.T.: 4.951 min  
 Delta R.T.: 0.000 min  
 Response: 18432860  
 Conc: 19186.11 ng/ml



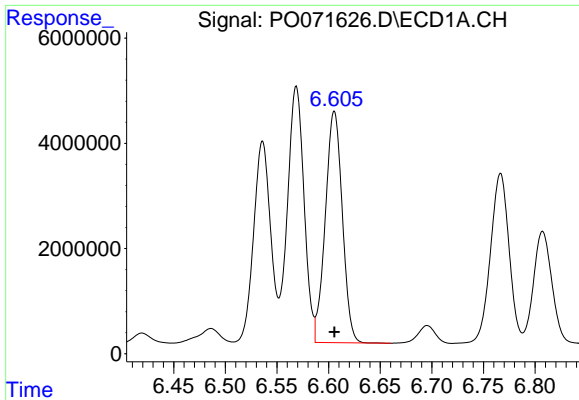
#19 AR-1242-4

R.T.: 5.835 min  
 Delta R.T.: 0.000 min  
 Response: 37714100  
 Conc: 20028.27 ng/ml



#19 AR-1242-4

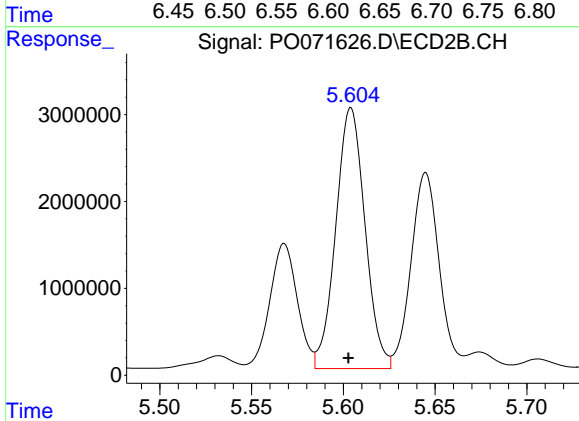
R.T.: 5.050 min  
 Delta R.T.: 0.001 min  
 Response: 19616353  
 Conc: 22462.20 ng/ml



#20 AR-1242-5

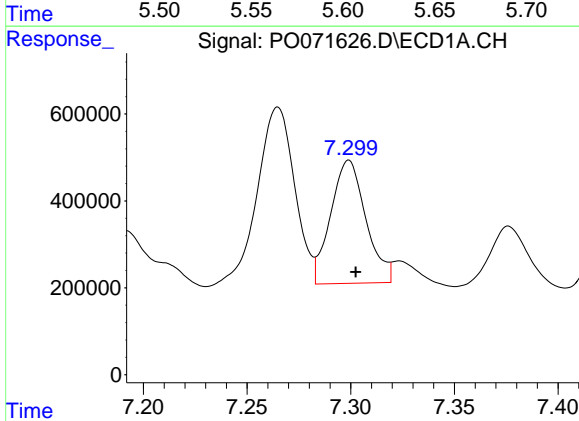
R.T.: 6.606 min  
Delta R.T.: 0.000 min  
Response: 50373125  
Conc: 21974.64 ng/ml

Instrument :  
ECD\_O  
ClientSampleId :  
32648



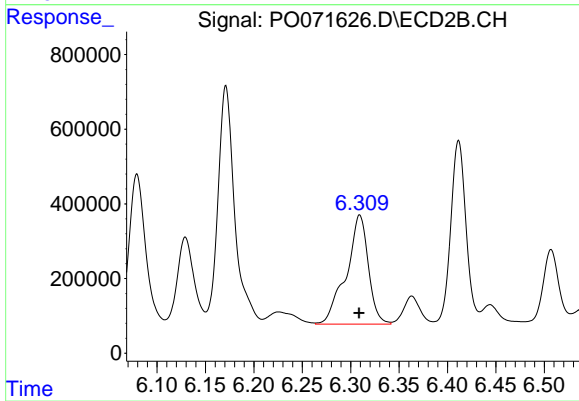
#20 AR-1242-5

R.T.: 5.604 min  
Delta R.T.: 0.001 min  
Response: 33239571  
Conc: 26546.20 ng/ml



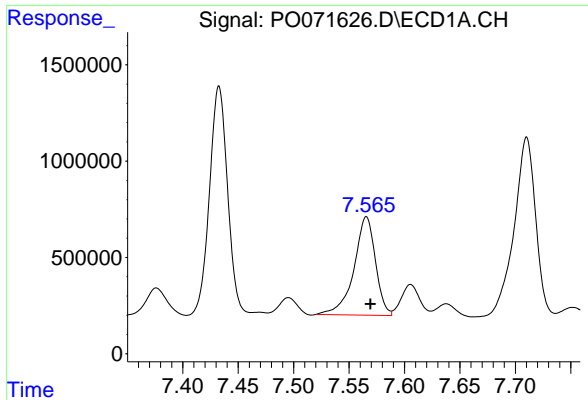
#31 AR-1260-1

R.T.: 7.299 min  
Delta R.T.: -0.003 min  
Response: 3355442  
Conc: 590.50 ng/ml



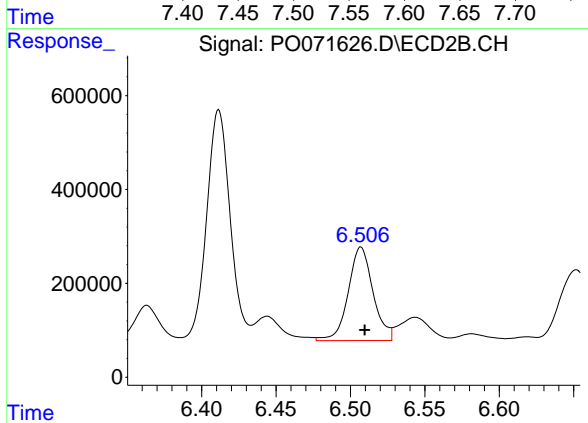
#31 AR-1260-1

R.T.: 6.309 min  
Delta R.T.: 0.000 min  
Response: 4642799  
Conc: 1677.65 ng/ml

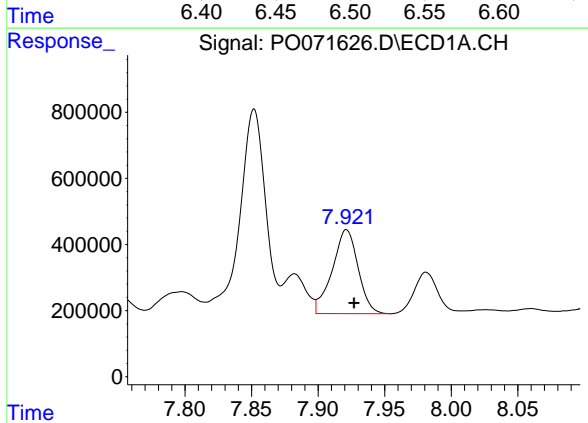


#32 AR-1260-2  
 R.T.: 7.566 min  
 Delta R.T.: -0.004 min  
 Response: 6921868  
 Conc: 797.32 ng/ml

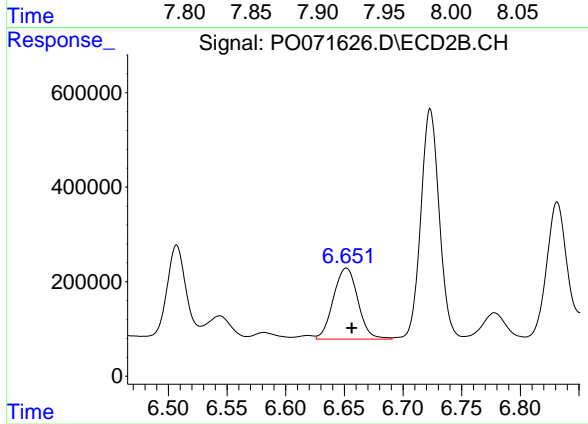
Instrument :  
 ECD\_O  
 ClientSampleId :  
 32648



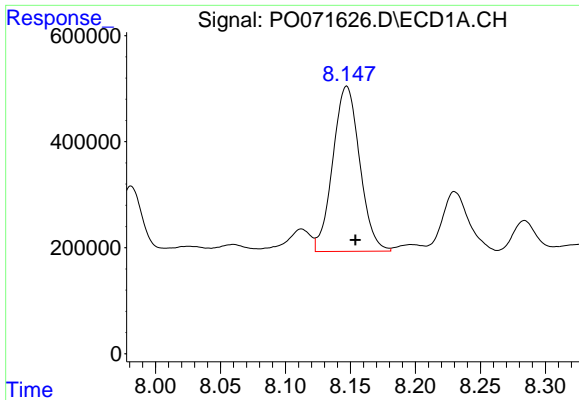
#32 AR-1260-2  
 R.T.: 6.507 min  
 Delta R.T.: -0.003 min  
 Response: 2314423  
 Conc: 654.79 ng/ml



#33 AR-1260-3  
 R.T.: 7.921 min  
 Delta R.T.: -0.006 min  
 Response: 3435786  
 Conc: 477.16 ng/ml

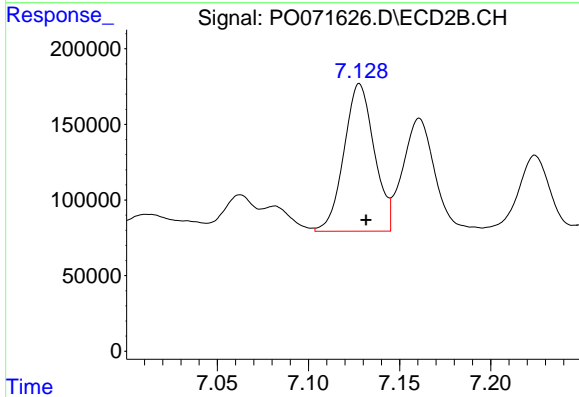


#33 AR-1260-3  
 R.T.: 6.652 min  
 Delta R.T.: -0.004 min  
 Response: 2192266  
 Conc: 681.95 ng/ml

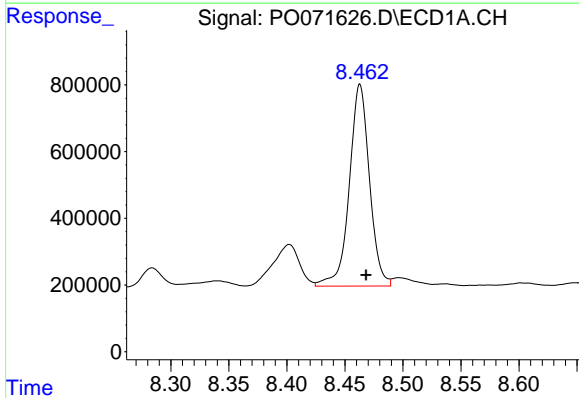


#34 AR-1260-4  
 R.T.: 8.147 min  
 Delta R.T.: -0.007 min  
 Response: 4491645  
 Conc: 677.95 ng/ml

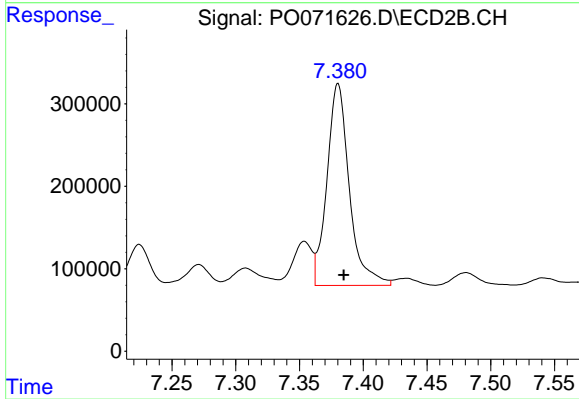
Instrument :  
 ECD\_O  
 ClientSampleId :  
 32648



#34 AR-1260-4  
 R.T.: 7.128 min  
 Delta R.T.: -0.004 min  
 Response: 1128124  
 Conc: 391.01 ng/ml



#35 AR-1260-5  
 R.T.: 8.463 min  
 Delta R.T.: -0.005 min  
 Response: 7316864  
 Conc: 485.23 ng/ml



#35 AR-1260-5  
 R.T.: 7.380 min  
 Delta R.T.: -0.004 min  
 Response: 2994729  
 Conc: 404.87 ng/ml