

Data Path : Z:\pestpcbsrv\HPCHEM1\ECD_0\Data\P0092520\
 Data File : P0071631.D
 Signal(s) : Signal #1: ECD1A.CH Signal #2: ECD2B.CH
 Acq On : 25 Sep 2020 14:38
 Operator : DD\AJ
 Sample : L4129-04
 Misc :
 ALS Vial : 12 Sample Multiplier: 1

Instrument :
 ECD_0
 ClientSampleId :
 32651

Integration File signal 1: autoint1.e
 Integration File signal 2: autoint2.e
 Quant Time: Sep 29 01:29:53 2020
 Quant Method : Z:\pestpcbsrv\HPCHEM1\ECD_0\methods\P0092320.M
 Quant Title : GC EXTRACTABLES
 QLast Update : Wed Sep 23 08:07:44 2020
 Response via : Initial Calibration
 Integrator: ChemStation 6890 Scale Mode: Small noise peaks clipped

Volume Inj. : 2 µl
 Signal #1 Phase : ZB-MR1 Signal #2 Phase: ZB-MR2
 Signal #1 Info : 30Mx0.32mmx 0.50µ Signal #2 Info : 30M x 0.32mm x 0.25µm

Compound	RT#1	RT#2	Resp#1	Resp#2	ng/ml	ng/ml

System Monitoring Compounds						
1) SA Tetrachlo...	4.338	3.523	1699575	778575	19.805	18.904
2) SA Decachlor...	9.948	8.697	2246681	1047949	19.555	17.240
Target Compounds						
16) L4 AR-1242-1	5.642	4.747	30665152	14906485	11931.957	11875.750
17) L4 AR-1242-2	5.664	4.765	41166020	20405344	11050.531	11654.882
18) L4 AR-1242-3	5.727	4.950	25444816	12250070	11319.862	12750.666
19) L4 AR-1242-4	5.833	5.049	23816099	11856669	12647.666	13576.779
20) L4 AR-1242-5	6.605	5.604	52497174	33230091	22901.231	26538.626
31) L7 AR-1260-1	7.299	6.309	2223204	3622389	391.248	1308.931 #
32) L7 AR-1260-2	7.564	6.507	5112934	1748509	588.952	494.686
33) L7 AR-1260-3	7.922	6.652	2828104	1586102	392.769	493.388 #
34) L7 AR-1260-4	8.147	7.128	3369010	1057039	508.506	366.369 #
35) L7 AR-1260-5	8.464	7.380	6274383	2763441	416.098	373.602

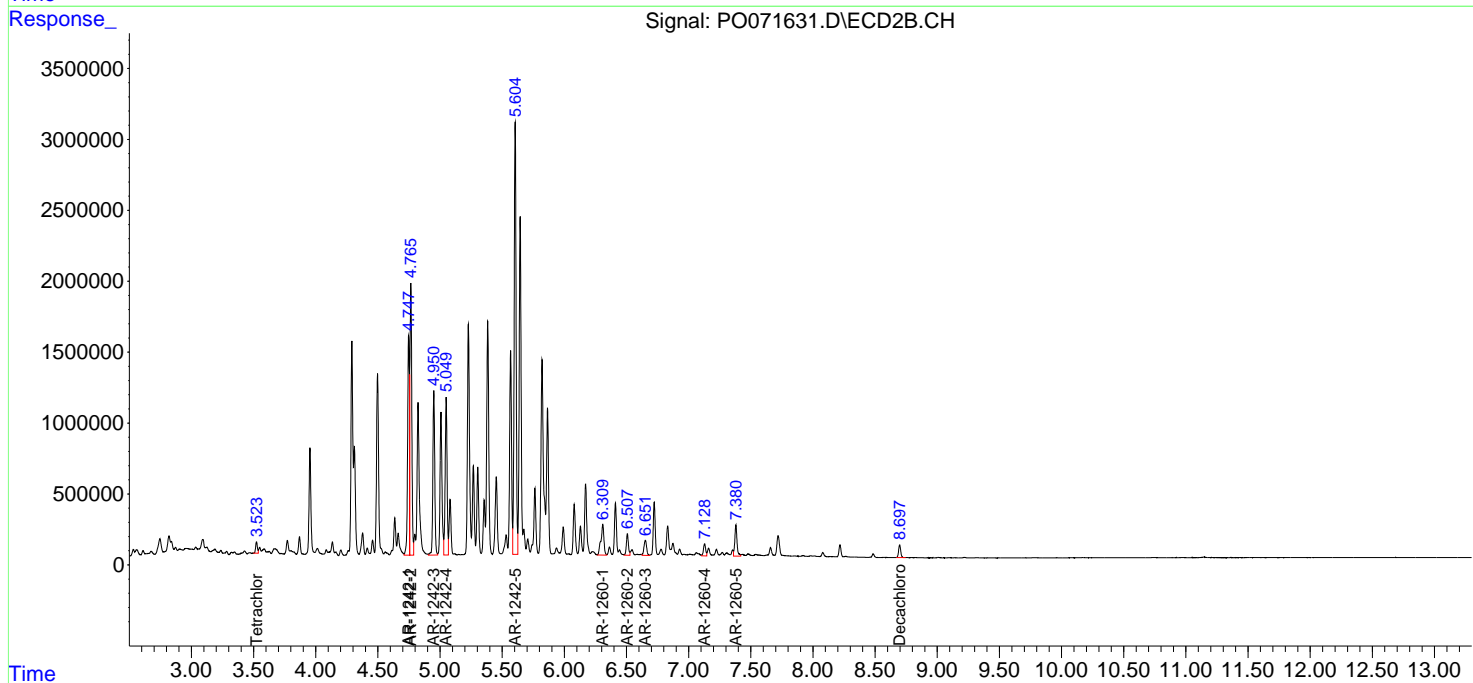
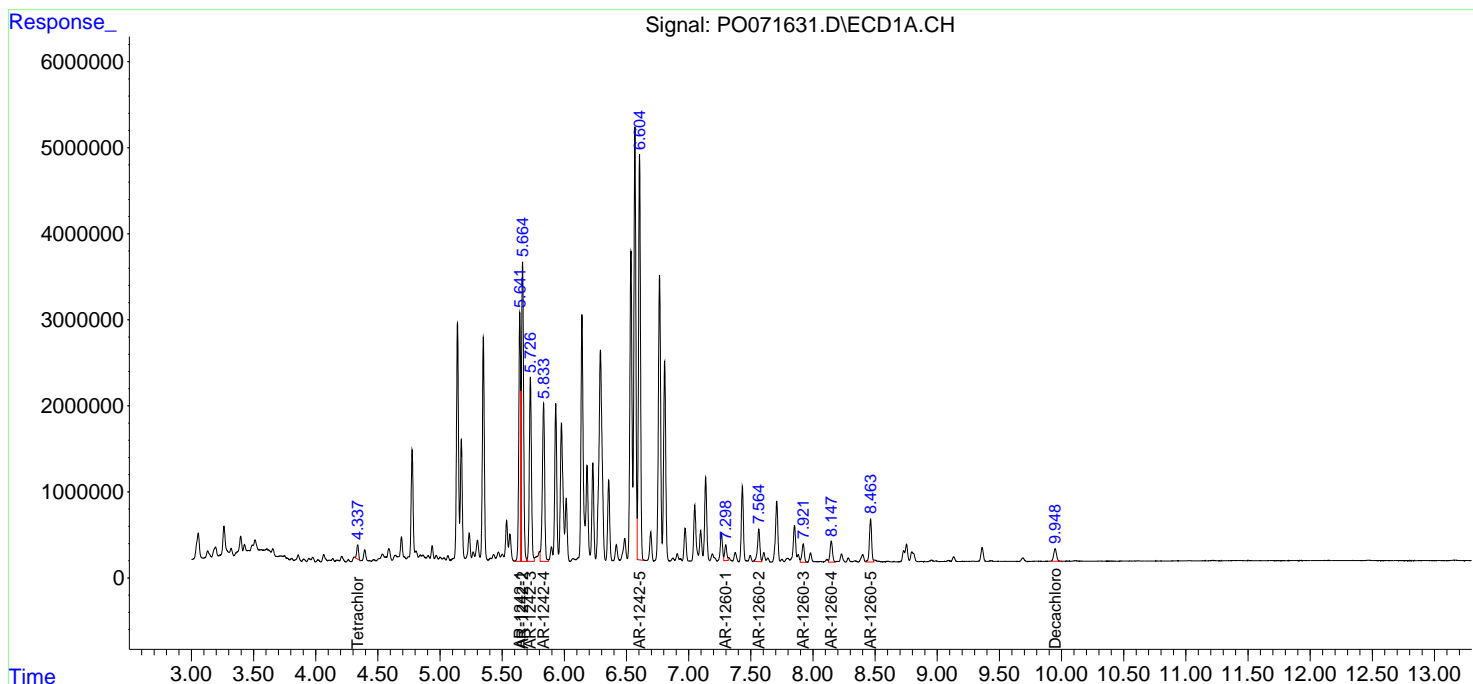
(f)=RT Delta > 1/2 Window (#)=Amounts differ by > 25% (m)=manual int.

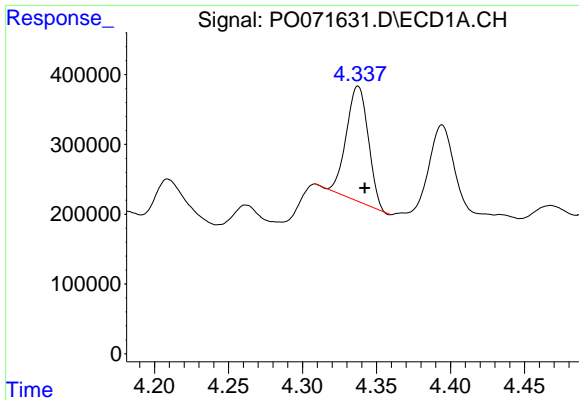
Data Path : Z:\pestpcbsrv\HPCHEM1\ECD_O\Data\P0092520\
 Data File : P0071631.D
 Signal(s) : Signal #1: ECD1A.CH Signal #2: ECD2B.CH
 Acq On : 25 Sep 2020 14:38
 Operator : DD\AJ
 Sample : L4129-04
 Misc :
 ALS Vial : 12 Sample Multiplier: 1

Instrument :
 ECD_O
 ClientSampled :
 32651

Integration File signal 1: autoint1.e
 Integration File signal 2: autoint2.e
 Quant Time: Sep 29 01:29:53 2020
 Quant Method : Z:\pestpcbsrv\HPCHEM1\ECD_O\methods\P0092320.M
 Quant Title : GC EXTRACTABLES
 QLast Update : Wed Sep 23 08:07:44 2020
 Response via : Initial Calibration
 Integrator: ChemStation 6890 Scale Mode: Small noise peaks clipped

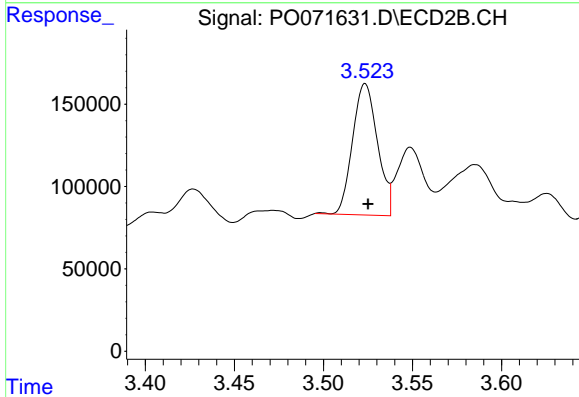
Volume Inj. : 2 µl
 Signal #1 Phase : ZB-MR1 Signal #2 Phase: ZB-MR2
 Signal #1 Info : 30Mx0.32mmx 0.50µ Signal #2 Info : 30M x 0.32mm x 0.25µm



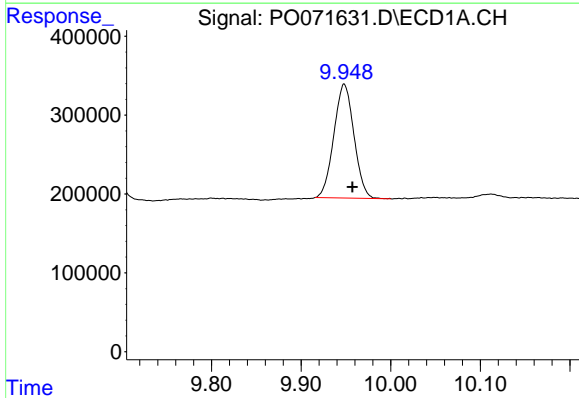


#1 Tetrachloro-m-xylene
 R.T.: 4.338 min
 Delta R.T.: -0.004 min
 Response: 1699575
 Conc: 19.81 ng/ml

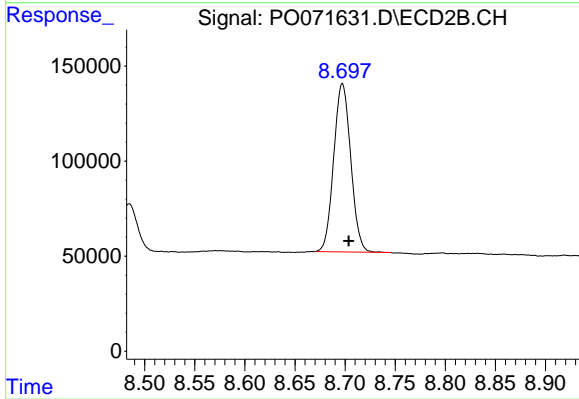
Instrument :
 ECD_O
 ClientSampleId :
 32651



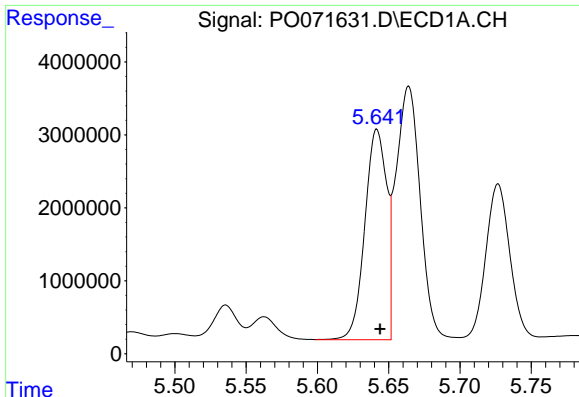
#1 Tetrachloro-m-xylene
 R.T.: 3.523 min
 Delta R.T.: -0.001 min
 Response: 778575
 Conc: 18.90 ng/ml



#2 Decachlorobiphenyl
 R.T.: 9.948 min
 Delta R.T.: -0.009 min
 Response: 2246681
 Conc: 19.56 ng/ml



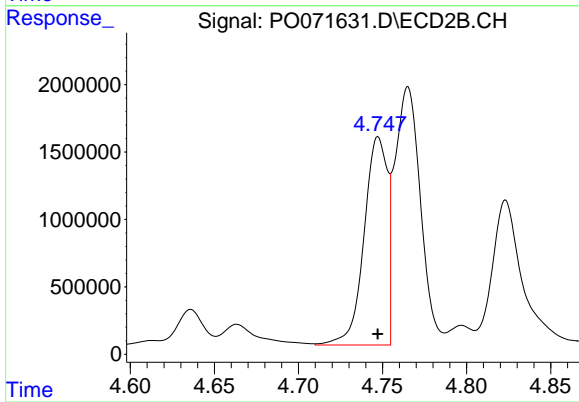
#2 Decachlorobiphenyl
 R.T.: 8.697 min
 Delta R.T.: -0.006 min
 Response: 1047949
 Conc: 17.24 ng/ml



#16 AR-1242-1

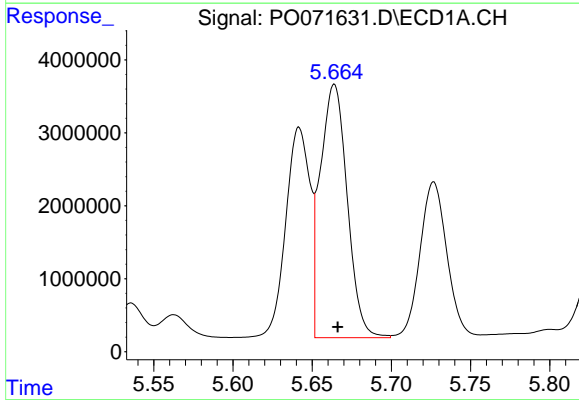
R.T.: 5.642 min
 Delta R.T.: -0.002 min
 Response: 30665152
 Conc: 11931.96 ng/ml

Instrument :
 ECD_O
 ClientSampleId :
 32651



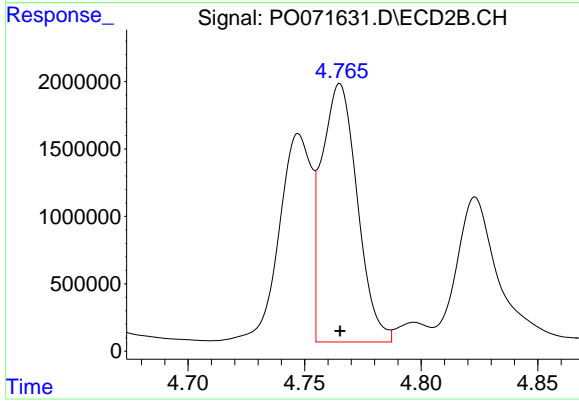
#16 AR-1242-1

R.T.: 4.747 min
 Delta R.T.: 0.000 min
 Response: 14906485
 Conc: 11875.75 ng/ml



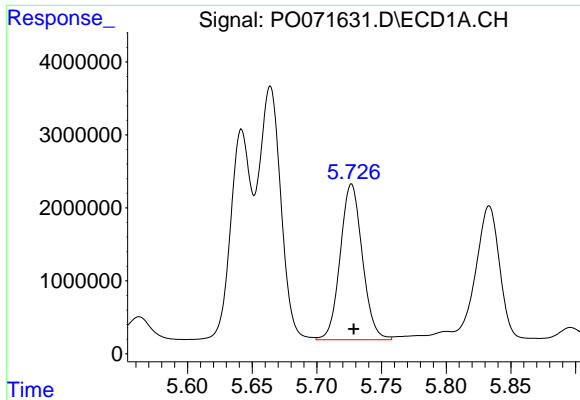
#17 AR-1242-2

R.T.: 5.664 min
 Delta R.T.: -0.002 min
 Response: 41166020
 Conc: 11050.53 ng/ml



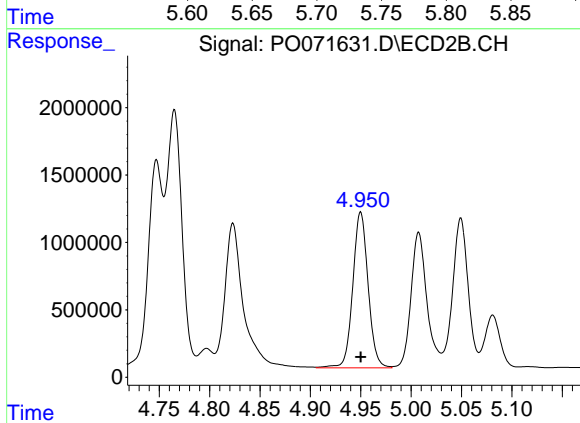
#17 AR-1242-2

R.T.: 4.765 min
 Delta R.T.: 0.000 min
 Response: 20405344
 Conc: 11654.88 ng/ml

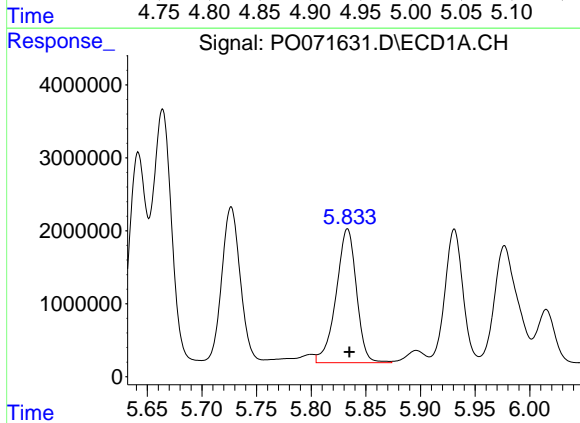


#18 AR-1242-3
 R.T.: 5.727 min
 Delta R.T.: -0.002 min
 Response: 25444816
 Conc: 11319.86 ng/ml

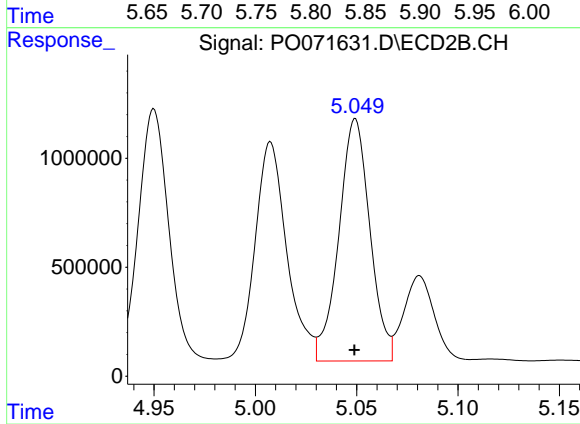
Instrument :
 ECD_O
 ClientSampleId :
 32651



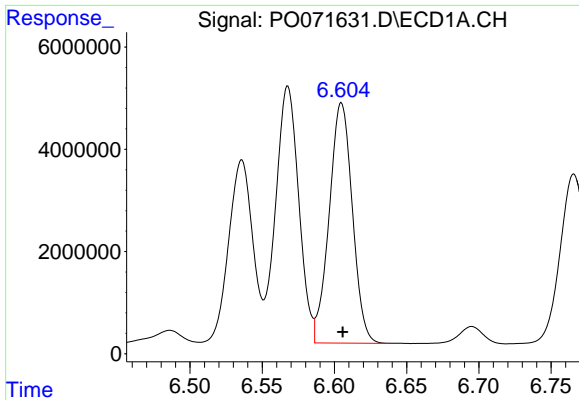
#18 AR-1242-3
 R.T.: 4.950 min
 Delta R.T.: 0.000 min
 Response: 12250070
 Conc: 12750.67 ng/ml



#19 AR-1242-4
 R.T.: 5.833 min
 Delta R.T.: -0.002 min
 Response: 23816099
 Conc: 12647.67 ng/ml

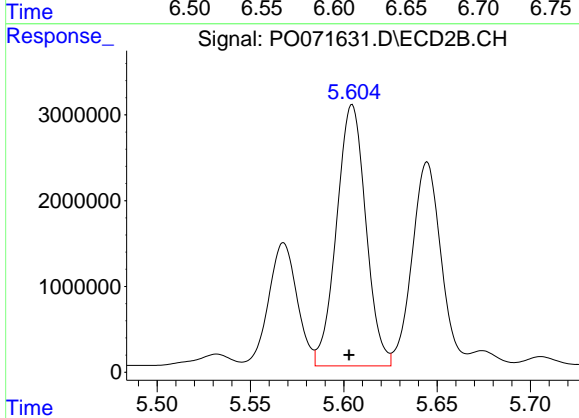


#19 AR-1242-4
 R.T.: 5.049 min
 Delta R.T.: 0.000 min
 Response: 11856669
 Conc: 13576.78 ng/ml

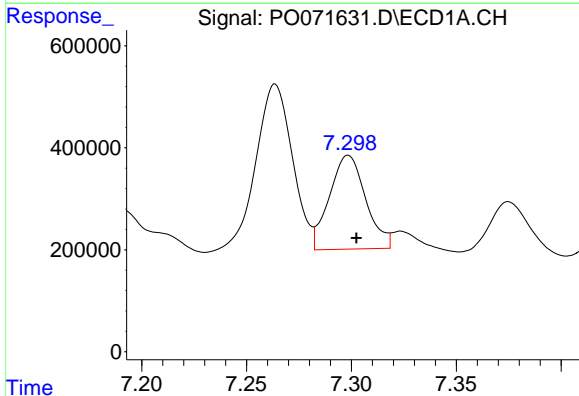


#20 AR-1242-5
 R.T.: 6.605 min
 Delta R.T.: 0.000 min
 Response: 52497174
 Conc: 22901.23 ng/ml

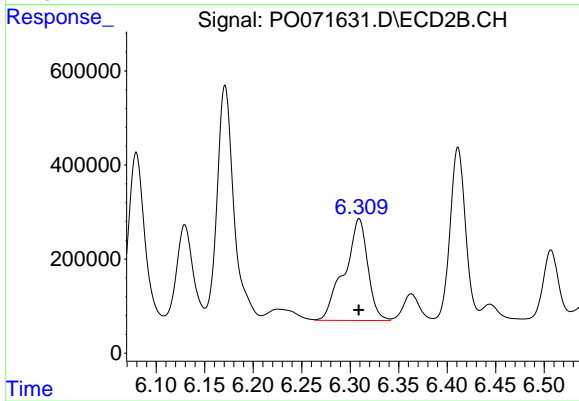
Instrument :
 ECD_O
 ClientSampleId :
 32651



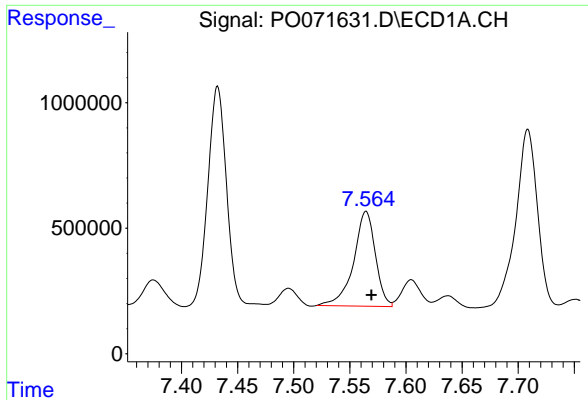
#20 AR-1242-5
 R.T.: 5.604 min
 Delta R.T.: 0.002 min
 Response: 33230091
 Conc: 26538.63 ng/ml



#31 AR-1260-1
 R.T.: 7.299 min
 Delta R.T.: -0.004 min
 Response: 2223204
 Conc: 391.25 ng/ml



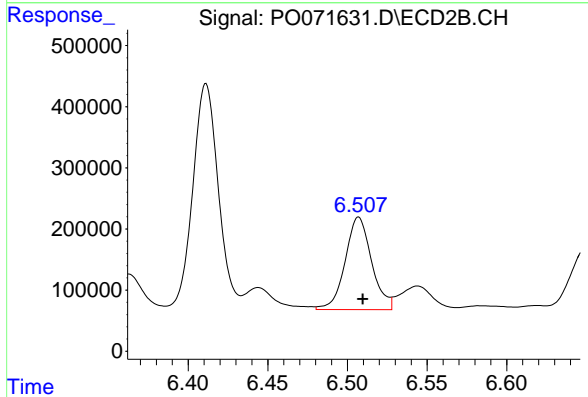
#31 AR-1260-1
 R.T.: 6.309 min
 Delta R.T.: 0.000 min
 Response: 3622389
 Conc: 1308.93 ng/ml



#32 AR-1260-2

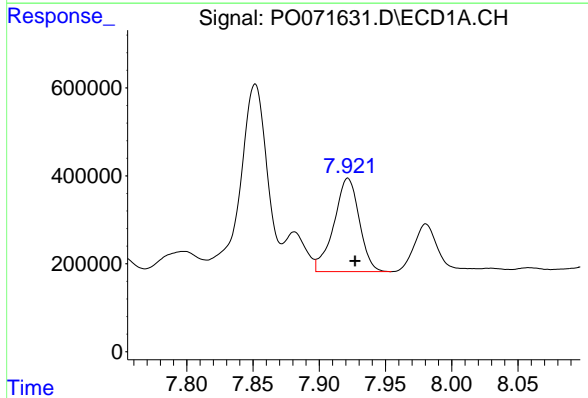
R.T.: 7.564 min
 Delta R.T.: -0.005 min
 Response: 5112934
 Conc: 588.95 ng/ml

Instrument :
 ECD_O
 ClientSampled :
 32651



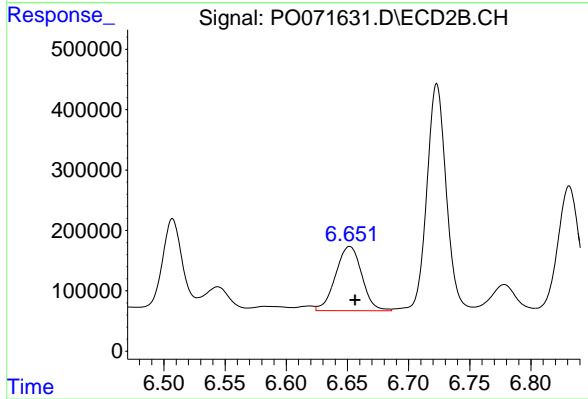
#32 AR-1260-2

R.T.: 6.507 min
 Delta R.T.: -0.003 min
 Response: 1748509
 Conc: 494.69 ng/ml



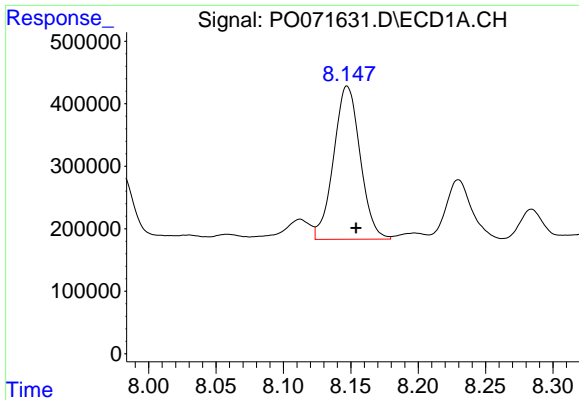
#33 AR-1260-3

R.T.: 7.922 min
 Delta R.T.: -0.005 min
 Response: 2828104
 Conc: 392.77 ng/ml



#33 AR-1260-3

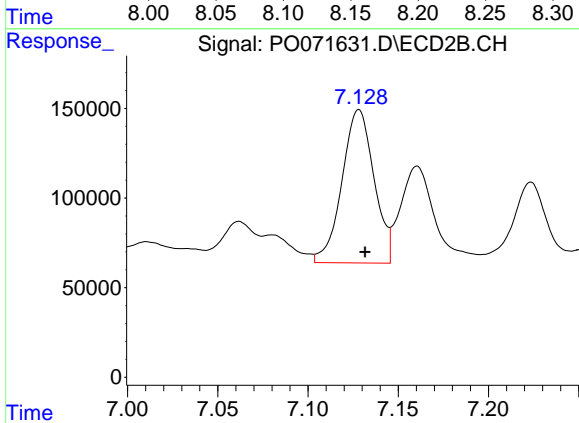
R.T.: 6.652 min
 Delta R.T.: -0.004 min
 Response: 1586102
 Conc: 493.39 ng/ml



#34 AR-1260-4

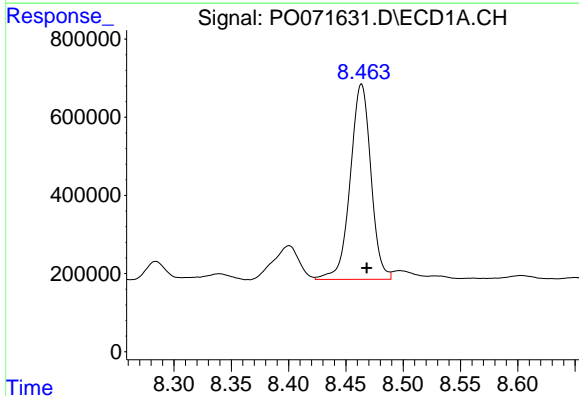
R.T.: 8.147 min
 Delta R.T.: -0.007 min
 Response: 3369010
 Conc: 508.51 ng/ml

Instrument :
 ECD_O
 ClientSampleId :
 32651



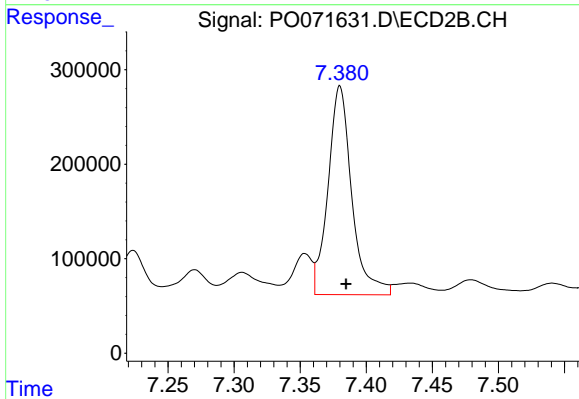
#34 AR-1260-4

R.T.: 7.128 min
 Delta R.T.: -0.003 min
 Response: 1057039
 Conc: 366.37 ng/ml



#35 AR-1260-5

R.T.: 8.464 min
 Delta R.T.: -0.005 min
 Response: 6274383
 Conc: 416.10 ng/ml



#35 AR-1260-5

R.T.: 7.380 min
 Delta R.T.: -0.005 min
 Response: 2763441
 Conc: 373.60 ng/ml