

Data Path : Z:\pestpcbsrv\HPCHEM1\ECD_0\Data\P0092623\
 Data File : P0098310.D
 Signal(s) : Signal #1: ECD1A.ch Signal #2: ECD2B.ch
 Acq On : 27 Sep 2023 03:14
 Operator : YP/AJ
 Sample : 04612-05
 Misc :
 ALS Vial : 38 Sample Multiplier: 1

Instrument :
 ECD_0
 ClientSampleId :

Integration File signal 1: autoint1.e
 Integration File signal 2: autoint2.e
 Quant Time: Sep 27 03:38:30 2023
 Quant Method : Z:\pestpcbsrv\HPCHEM1\ECD_0\methods\P0092523.M
 Quant Title : GC EXTRACTABLES
 QLast Update : Tue Sep 26 09:03:52 2023
 Response via : Initial Calibration
 Integrator: ChemStation

Volume Inj. : 2 µl
 Signal #1 Phase : ZB-MR1 Signal #2 Phase: ZB-MR2
 Signal #1 Info : 30Mx0.32mmx 0.50µ Signal #2 Info : 30M x 0.32mm x 0.25µm

Compound	RT#1	RT#2	Resp#1	Resp#2	ng/ml	ng/ml
System Monitoring Compounds						
1) SA Tetrachlo...	4.485	3.639	40876257	17011515	21.412	22.411
2) SA Decachlor...	10.292	8.651	27265139	11386474	33.919	29.569
Target Compounds						
3) L1 AR-1016-1	5.683	4.742	1658120	3226563	36.499	157.086 #
4) L1 AR-1016-2	5.683	4.742	1658120	3226563	23.393	110.469 #
5) L1 AR-1016-3	5.745	4.918	631813	731789	14.609	46.668 #
6) L1 AR-1016-4	5.811	4.962	820456	954922	24.849	70.906 #
7) L1 AR-1016-5	6.143	5.204	-445830	1150240	N.D.	67.185 #
8) L2 AR-1221-1	4.695	3.845	3152611	30842	132.018	3.419 #
9) L2 AR-1221-2	4.794	3.941	3784481	460231	229.968	65.589 #
10) L2 AR-1221-3	4.874	4.013	6016864	1472199	124.742	76.020 #
11) L3 AR-1232-1	4.874	4.013	6016864	1472199	154.905	92.644 #
12) L3 AR-1232-2	5.415	4.742	2848554	3226563	138.125	241.055 #
13) L3 AR-1232-3	5.683	4.918	1658120	731789	52.050	108.247 #
14) L3 AR-1232-4	5.811	4.997	820456	482594	56.045	72.260 #
15) L3 AR-1232-5	5.910	5.204	5241941	1150240	419.652	160.759 #
16) L4 AR-1242-1	5.683	4.742	1658120	3226563	41.329	176.488 #
17) L4 AR-1242-2	5.683	4.742	1658120	3226563	26.544	125.422 #
18) L4 AR-1242-3	5.745	4.918	631813	731789	16.667	52.074 #
19) L4 AR-1242-4	5.811	4.997	820456	482594	28.402	32.241
20) L4 AR-1242-5	6.588	5.530	2256805	1814143	81.253	120.337 #
21) L5 AR-1248-1	5.683	4.742	1658120	3226563	55.577	233.279 #
22) L5 AR-1248-2	5.910	4.962	5241941	954922	112.238	47.736 #
23) L5 AR-1248-3	6.143	4.997	-445830	482594	N.D.	22.853 #
24) L5 AR-1248-4	6.544	5.204	2234190	1150240	50.253	48.467
25) L5 AR-1248-5	6.588	5.571	2256805	710377	48.555	36.736
26) L6 AR-1254-1	6.523	5.530	3551585	1814143	64.993	53.734
27) L6 AR-1254-2	6.734	5.639f	1035516	3022241	13.159	103.713 #
28) L6 AR-1254-3	7.133	6.080	2517419	1316058	34.569	30.840
29) L6 AR-1254-4	7.403	6.324	3484230	1026027	84.920	49.213 #
30) L6 AR-1254-5	7.811	6.733	3209818	1200939	66.269	36.531 #
31) L7 AR-1260-1	7.270	6.220	7516585	3260018	131.200	106.595
32) L7 AR-1260-2	7.519	6.422	3653813	3455265	59.007	109.179 #
33) L7 AR-1260-3	7.879	6.554	4592174	512168	94.334	16.319 #
34) L7 AR-1260-4	8.123	7.015	26619250	4121230	520.286	168.604 #
35) L7 AR-1260-5	8.440	7.276	4972958	3587297	53.588	76.262 #
36) L8 AR-1262-1	7.879	6.783	4592174	4508091	63.611	116.254 #
37) L8 AR-1262-2	8.440	7.015	4972958	4121230	47.146	120.608 #
38) L8 AR-1262-3	8.743	7.544	1344074	3043537	18.441	126.397 #
39) L8 AR-1262-4	8.839	7.633	1726105	1261170	29.613	30.750
40) L8 AR-1262-5	9.528	8.143	286080	2074787	9.069	116.565 #
41) L9 AR-1268-1	8.743	7.544	1344074	3043537	9.820	42.996 #

Data Path : Z:\pestpcbsrv\HPCHEM1\ECD_0\Data\P0092623\
 Data File : P0098310.D
 Signal(s) : Signal #1: ECD1A.ch Signal #2: ECD2B.ch
 Acq On : 27 Sep 2023 03:14
 Operator : YP/AJ
 Sample : 04612-05
 Misc :
 ALS Vial : 38 Sample Multiplier: 1

Instrument :
 ECD_0
 ClientSampleId :

Integration File signal 1: autoint1.e
 Integration File signal 2: autoint2.e
 Quant Time: Sep 27 03:38:30 2023
 Quant Method : Z:\pestpcbsrv\HPCHEM1\ECD_0\methods\P0092523.M
 Quant Title : GC EXTRACTABLES
 QLast Update : Tue Sep 26 09:03:52 2023
 Response via : Initial Calibration
 Integrator: ChemStation

Volume Inj. : 2 µl
 Signal #1 Phase : ZB-MR1 Signal #2 Phase: ZB-MR2
 Signal #1 Info : 30Mx0.32mmx 0.50µ Signal #2 Info : 30M x 0.32mm x 0.25µm

	Compound	RT#1	RT#2	Resp#1	Resp#2	ng/ml	ng/ml
42)	L9 AR-1268-2	8.839	7.633	1726105	1261170	14.211	21.081 #
43)	L9 AR-1268-3	9.109	7.885f	5295514	9085247	47.884	161.166 #
44)	L9 AR-1268-4	9.528	8.143	286080	2074787	8.203	108.925 #
45)	L9 AR-1268-5	9.978	8.409	5742970	513490	17.738	3.472 #

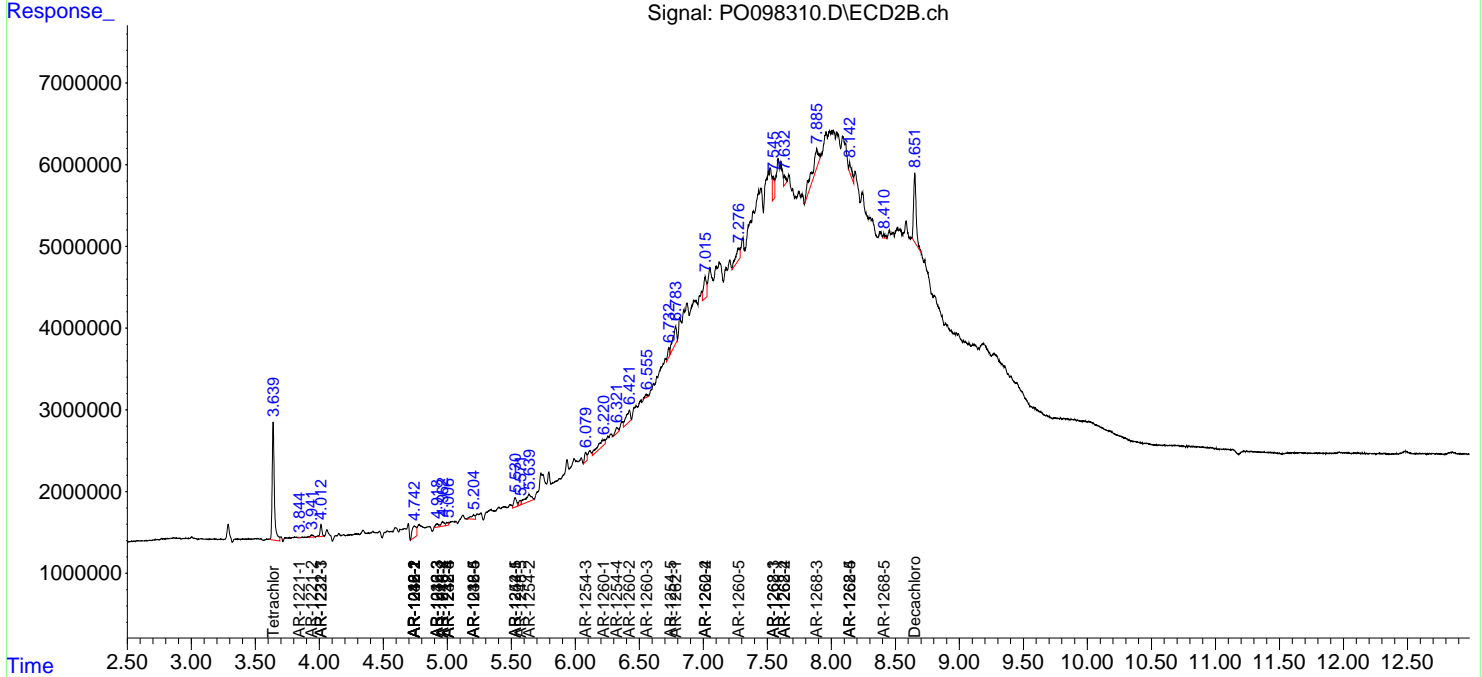
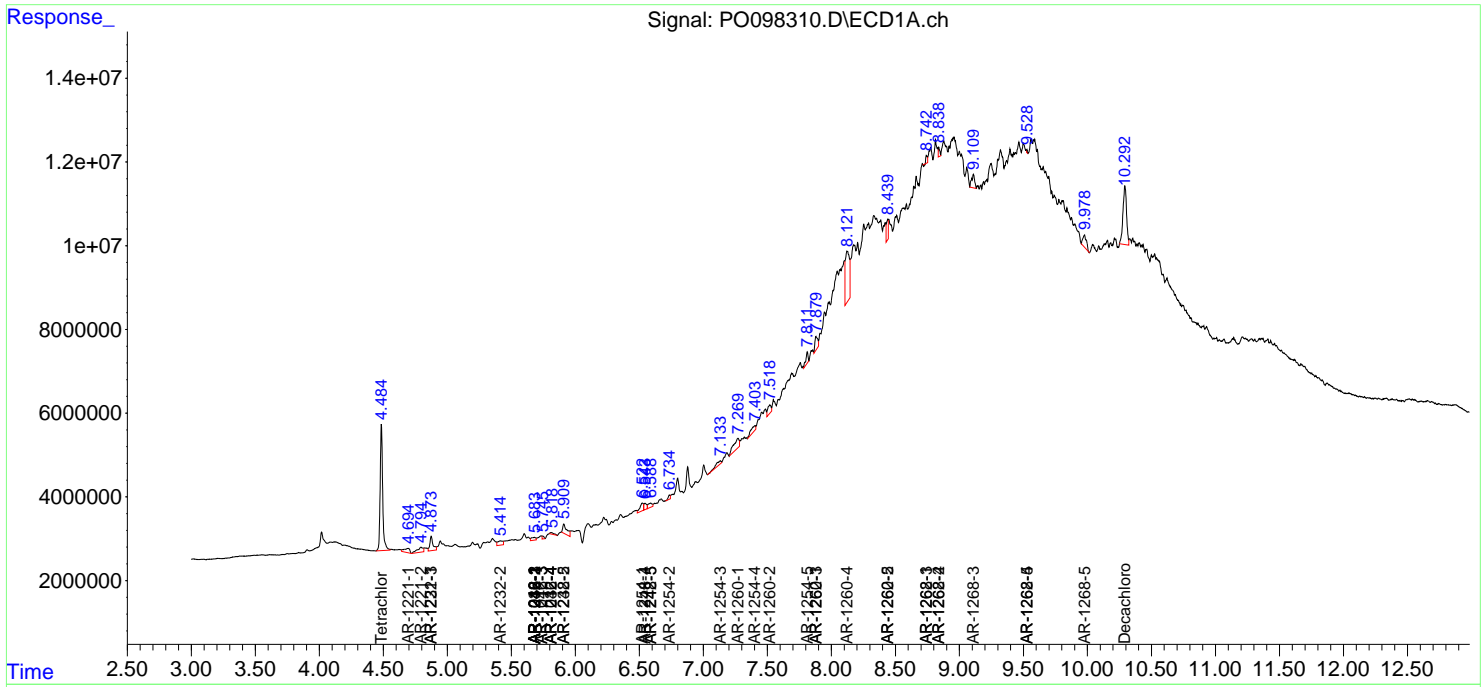
(f)=RT Delta > 1/2 Window (#)=Amounts differ by > 25% (m)=manual int.

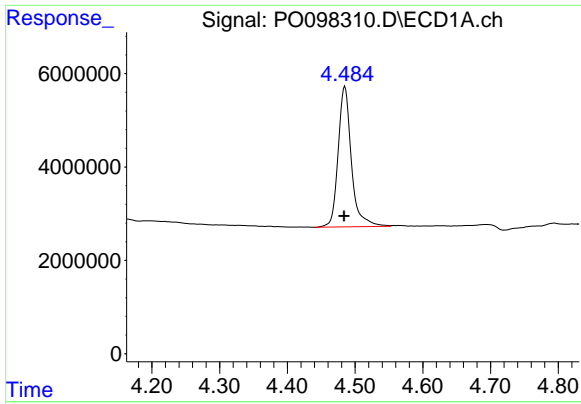
Data Path : Z:\pestpcbsrv\HPCHEM1\ECD_O\Data\PO092623\
 Data File : PO098310.D
 Signal(s) : Signal #1: ECD1A.ch Signal #2: ECD2B.ch
 Acq On : 27 Sep 2023 03:14
 Operator : YP/AJ
 Sample : 04612-05
 Misc :
 ALS Vial : 38 Sample Multiplier: 1

Instrument :
 ECD_O
 ClientSampleId :

Integration File signal 1: autoint1.e
 Integration File signal 2: autoint2.e
 Quant Time: Sep 27 03:38:30 2023
 Quant Method : Z:\pestpcbsrv\HPCHEM1\ECD_O\methods\PO092523.M
 Quant Title : GC EXTRACTABLES
 QLast Update : Tue Sep 26 09:03:52 2023
 Response via : Initial Calibration
 Integrator: ChemStation

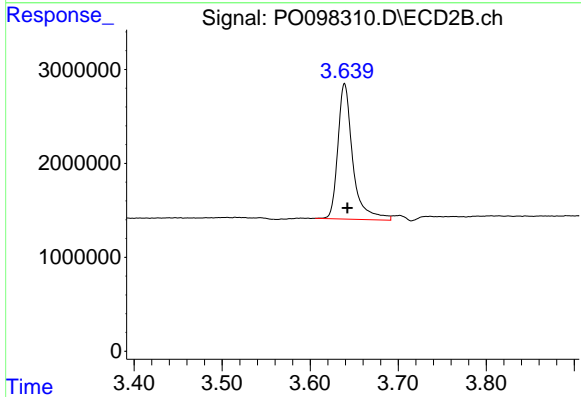
Volume Inj. : 2 µl
 Signal #1 Phase : ZB-MR1 Signal #2 Phase: ZB-MR2
 Signal #1 Info : 30Mx0.32mmx 0.50µ Signal #2 Info : 30M x 0.32mm x 0.25µm



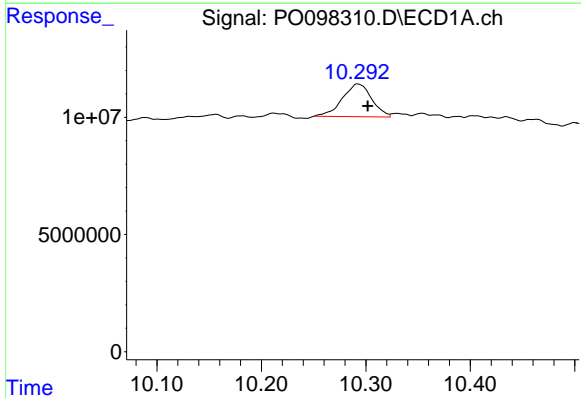


#1 Tetrachloro-m-xylene
 R.T.: 4.485 min
 Delta R.T.: 0.000 min
 Response: 40876257
 Conc: 21.41 ng/ml

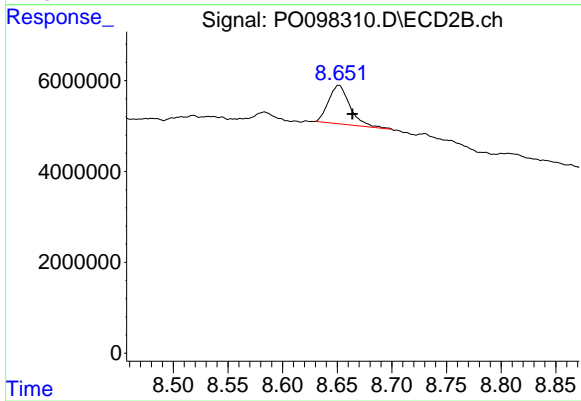
Instrument :
 ECD_O
 ClientSampleId :



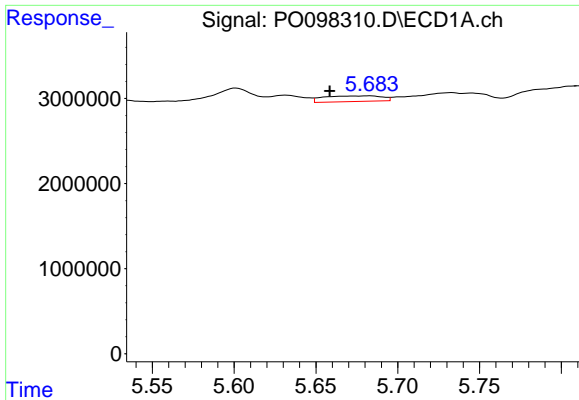
#1 Tetrachloro-m-xylene
 R.T.: 3.639 min
 Delta R.T.: -0.003 min
 Response: 17011515
 Conc: 22.41 ng/ml



#2 Decachlorobiphenyl
 R.T.: 10.292 min
 Delta R.T.: -0.009 min
 Response: 27265139
 Conc: 33.92 ng/ml



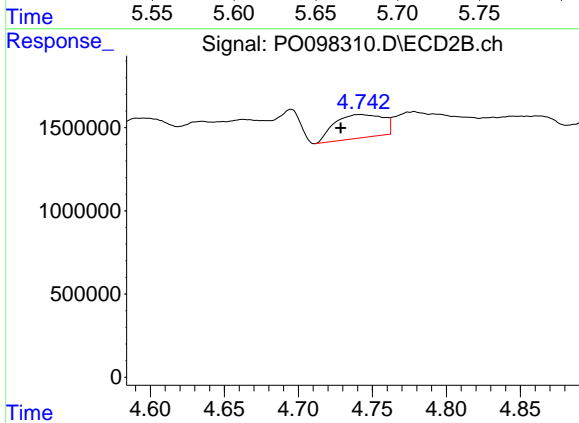
#2 Decachlorobiphenyl
 R.T.: 8.651 min
 Delta R.T.: -0.013 min
 Response: 11386474
 Conc: 29.57 ng/ml



#3 AR-1016-1

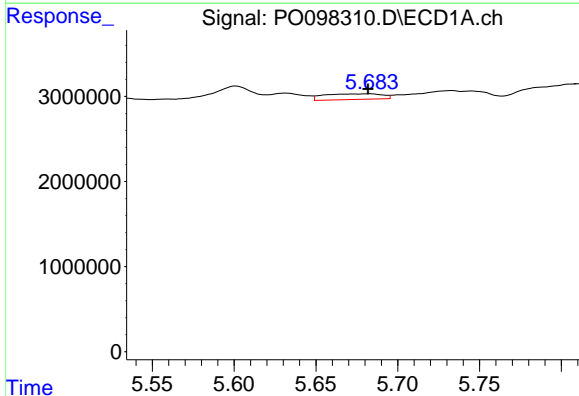
R.T.: 5.683 min
 Delta R.T.: 0.025 min
 Response: 1658120
 Conc: 36.50 ng/ml

Instrument :
 ECD_O
 ClientSampleId :



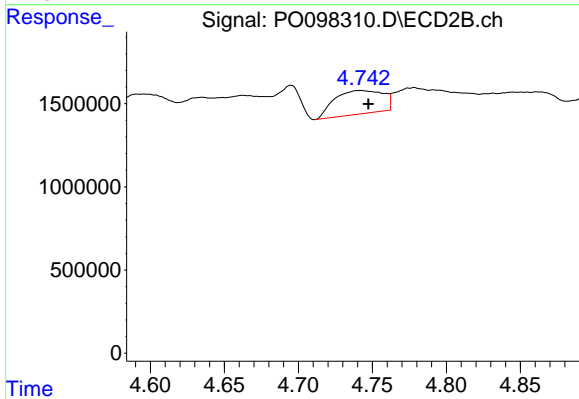
#3 AR-1016-1

R.T.: 4.742 min
 Delta R.T.: 0.013 min
 Response: 3226563
 Conc: 157.09 ng/ml



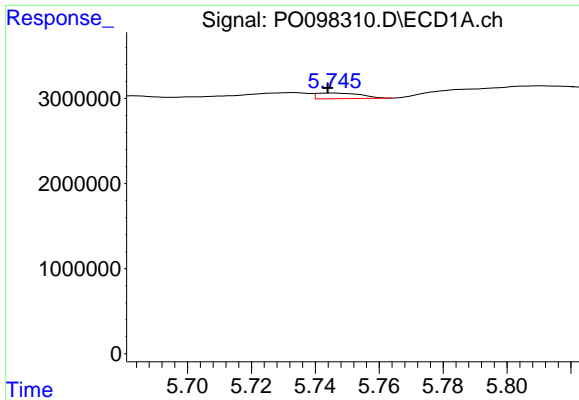
#4 AR-1016-2

R.T.: 5.683 min
 Delta R.T.: 0.001 min
 Response: 1658120
 Conc: 23.39 ng/ml



#4 AR-1016-2

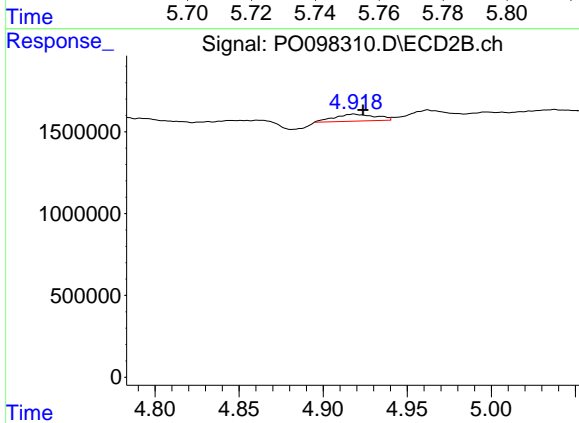
R.T.: 4.742 min
 Delta R.T.: -0.005 min
 Response: 3226563
 Conc: 110.47 ng/ml



#5 AR-1016-3

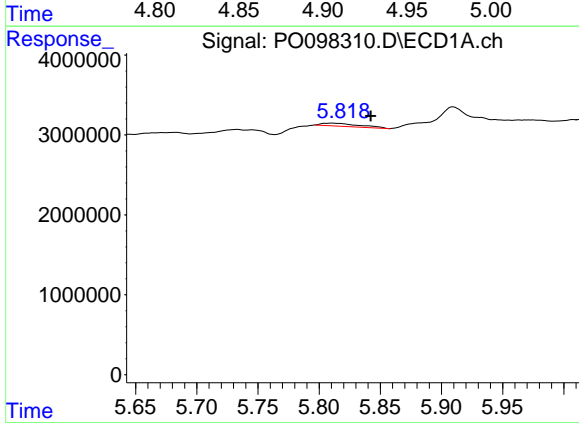
R.T.: 5.745 min
 Delta R.T.: 0.001 min
 Response: 631813
 Conc: 14.61 ng/ml

Instrument :
 ECD_O
 ClientSampleId :



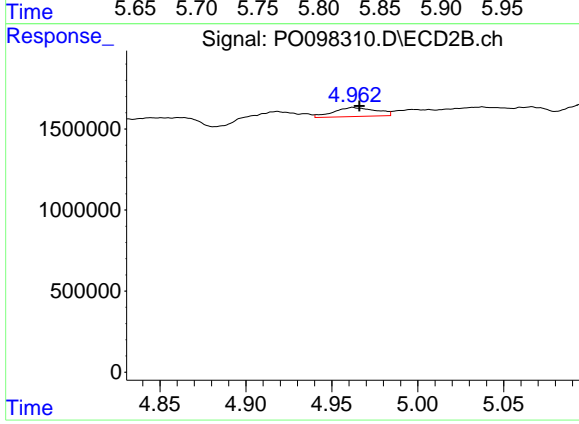
#5 AR-1016-3

R.T.: 4.918 min
 Delta R.T.: -0.006 min
 Response: 731789
 Conc: 46.67 ng/ml



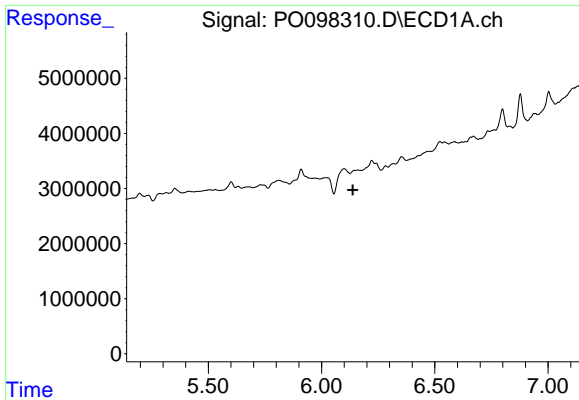
#6 AR-1016-4

R.T.: 5.811 min
 Delta R.T.: -0.031 min
 Response: 820456
 Conc: 24.85 ng/ml



#6 AR-1016-4

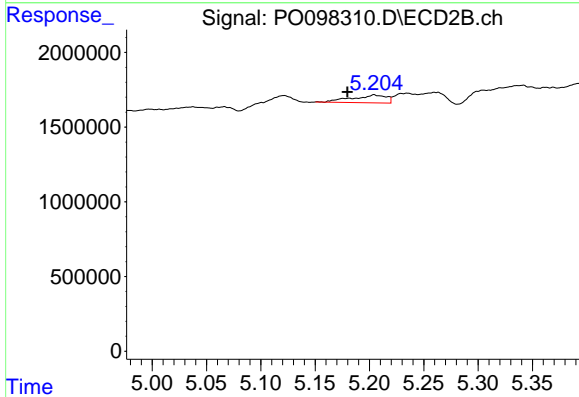
R.T.: 4.962 min
 Delta R.T.: -0.004 min
 Response: 954922
 Conc: 70.91 ng/ml



#7 AR-1016-5

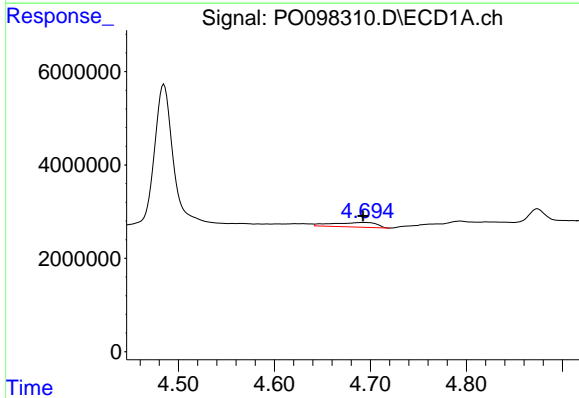
R.T.: 6.143 min
 Delta R.T.: 0.004 min
 Response: -445830
 Conc: N.D.

Instrument :
 ECD_O
 ClientSampleId :



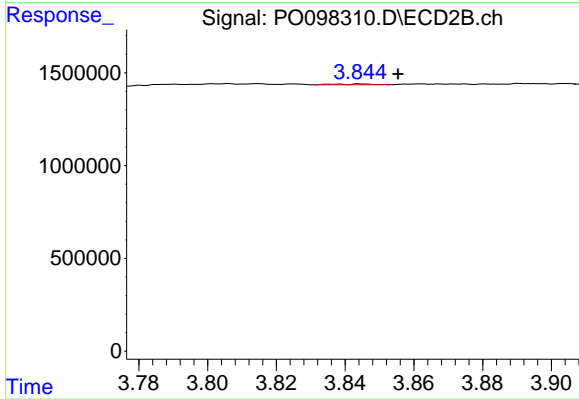
#7 AR-1016-5

R.T.: 5.204 min
 Delta R.T.: 0.025 min
 Response: 1150240
 Conc: 67.18 ng/ml



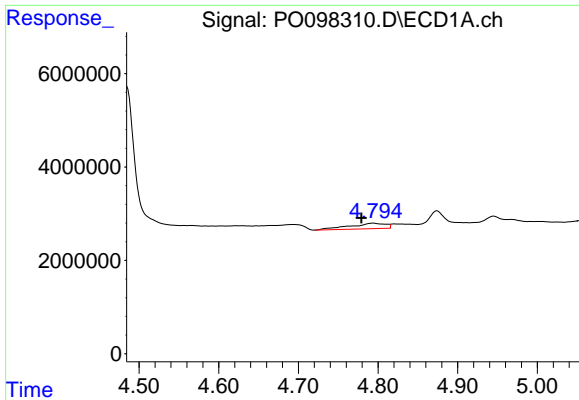
#8 AR-1221-1

R.T.: 4.695 min
 Delta R.T.: 0.002 min
 Response: 3152611
 Conc: 132.02 ng/ml



#8 AR-1221-1

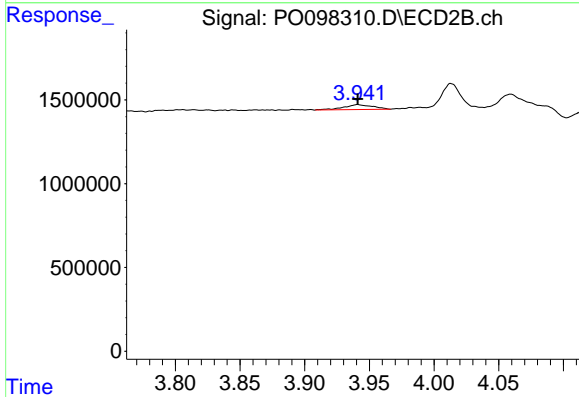
R.T.: 3.845 min
 Delta R.T.: -0.011 min
 Response: 30842
 Conc: 3.42 ng/ml



#9 AR-1221-2

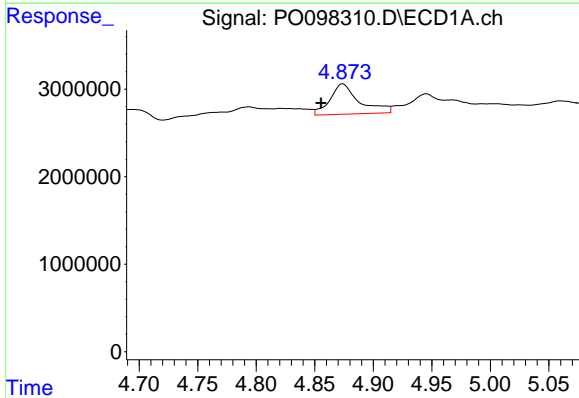
R.T.: 4.794 min
 Delta R.T.: 0.015 min
 Response: 3784481
 Conc: 229.97 ng/ml

Instrument :
 ECD_O
 ClientSampleId :



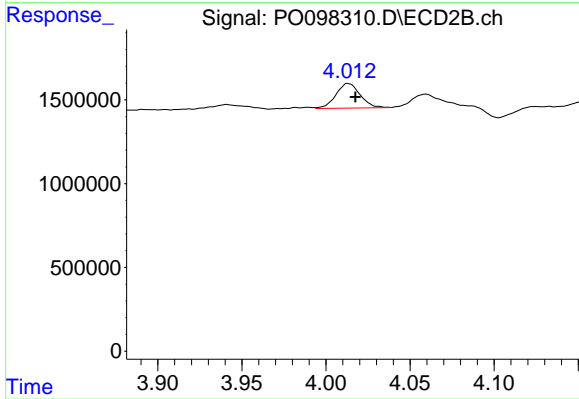
#9 AR-1221-2

R.T.: 3.941 min
 Delta R.T.: 0.000 min
 Response: 460231
 Conc: 65.59 ng/ml



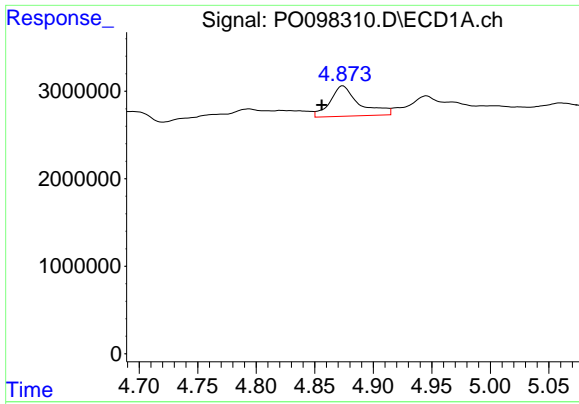
#10 AR-1221-3

R.T.: 4.874 min
 Delta R.T.: 0.019 min
 Response: 6016864
 Conc: 124.74 ng/ml



#10 AR-1221-3

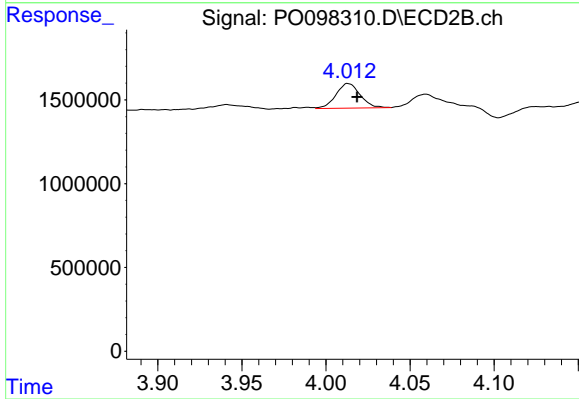
R.T.: 4.013 min
 Delta R.T.: -0.004 min
 Response: 1472199
 Conc: 76.02 ng/ml



#11 AR-1232-1

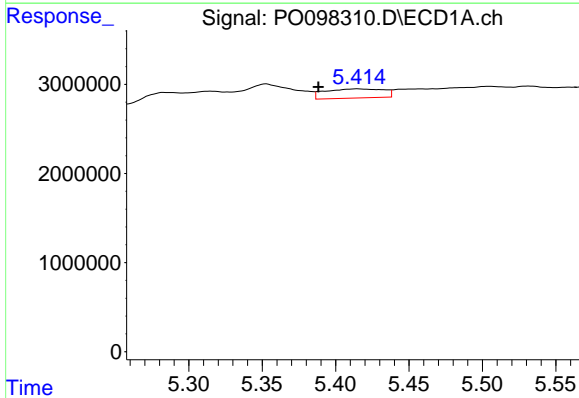
R.T.: 4.874 min
 Delta R.T.: 0.018 min
 Response: 6016864
 Conc: 154.91 ng/ml

Instrument :
 ECD_O
 ClientSampleId :



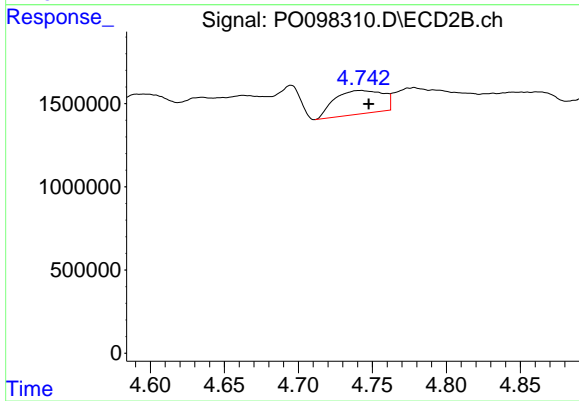
#11 AR-1232-1

R.T.: 4.013 min
 Delta R.T.: -0.005 min
 Response: 1472199
 Conc: 92.64 ng/ml



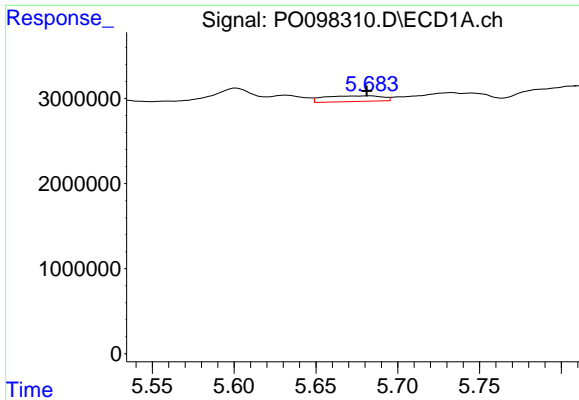
#12 AR-1232-2

R.T.: 5.415 min
 Delta R.T.: 0.027 min
 Response: 2848554
 Conc: 138.12 ng/ml



#12 AR-1232-2

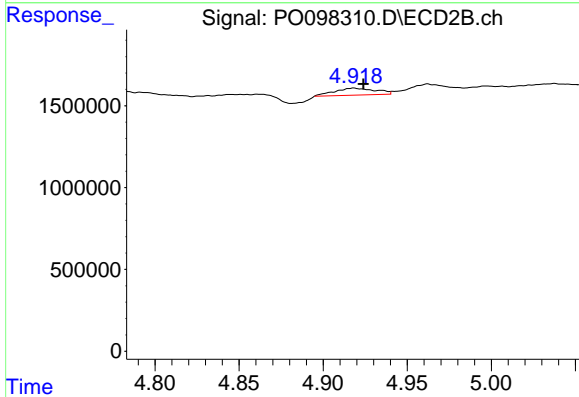
R.T.: 4.742 min
 Delta R.T.: -0.006 min
 Response: 3226563
 Conc: 241.06 ng/ml



#13 AR-1232-3

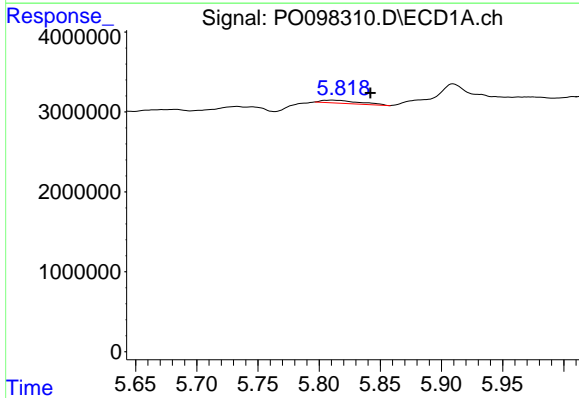
R.T.: 5.683 min
 Delta R.T.: 0.002 min
 Response: 1658120
 Conc: 52.05 ng/ml

Instrument :
 ECD_O
 ClientSampleId :



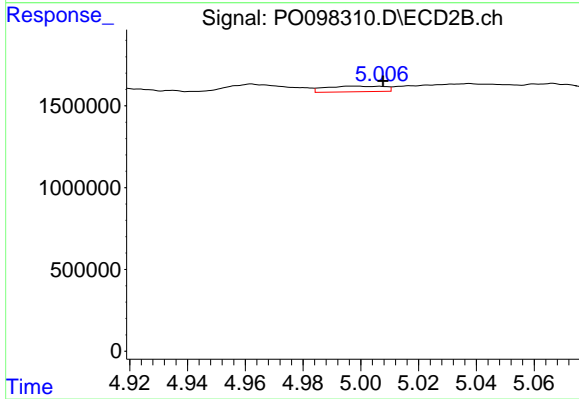
#13 AR-1232-3

R.T.: 4.918 min
 Delta R.T.: -0.006 min
 Response: 731789
 Conc: 108.25 ng/ml



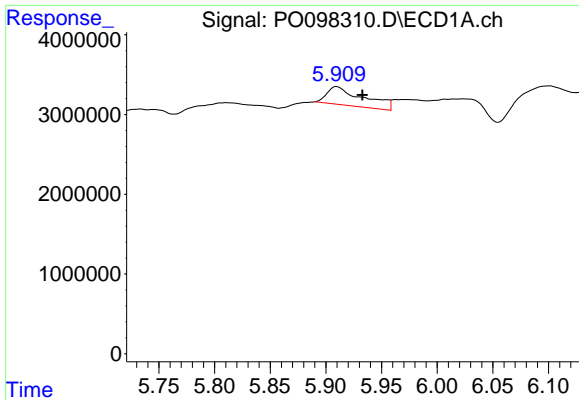
#14 AR-1232-4

R.T.: 5.811 min
 Delta R.T.: -0.031 min
 Response: 820456
 Conc: 56.05 ng/ml



#14 AR-1232-4

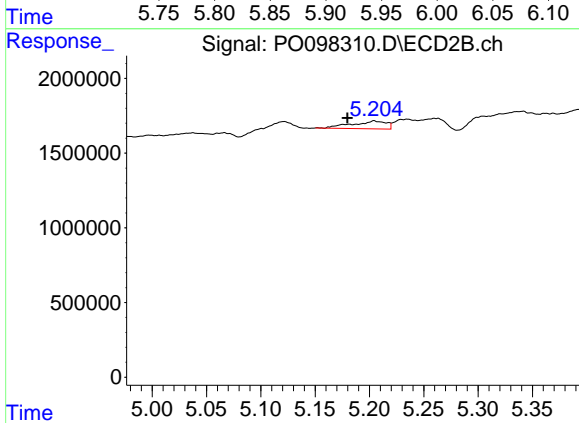
R.T.: 4.997 min
 Delta R.T.: -0.010 min
 Response: 482594
 Conc: 72.26 ng/ml



#15 AR-1232-5

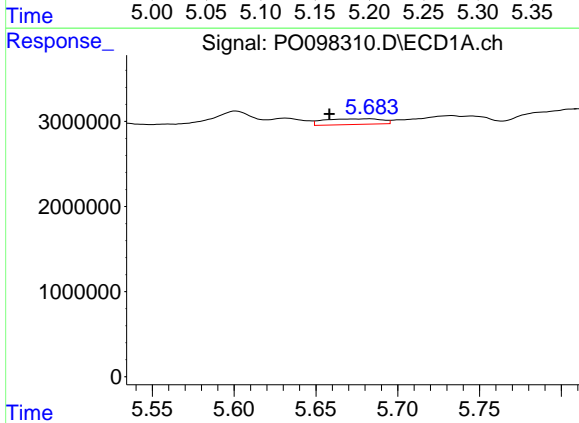
R.T.: 5.910 min
 Delta R.T.: -0.023 min
 Response: 5241941
 Conc: 419.65 ng/ml

Instrument :
 ECD_O
 ClientSampleId :



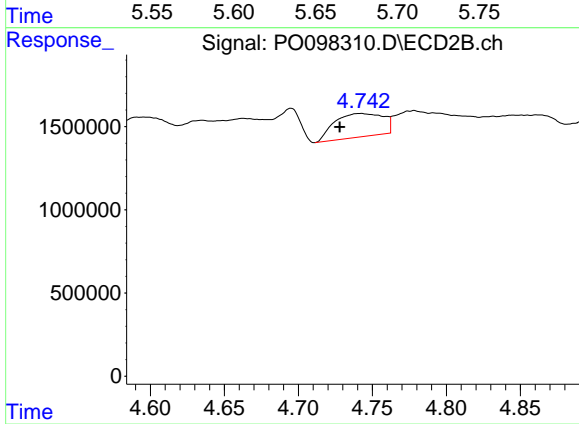
#15 AR-1232-5

R.T.: 5.204 min
 Delta R.T.: 0.025 min
 Response: 1150240
 Conc: 160.76 ng/ml



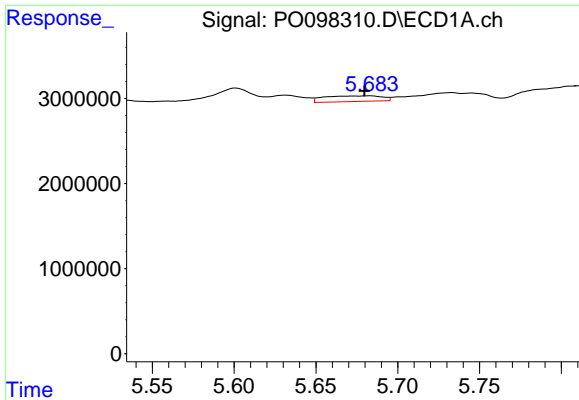
#16 AR-1242-1

R.T.: 5.683 min
 Delta R.T.: 0.025 min
 Response: 1658120
 Conc: 41.33 ng/ml



#16 AR-1242-1

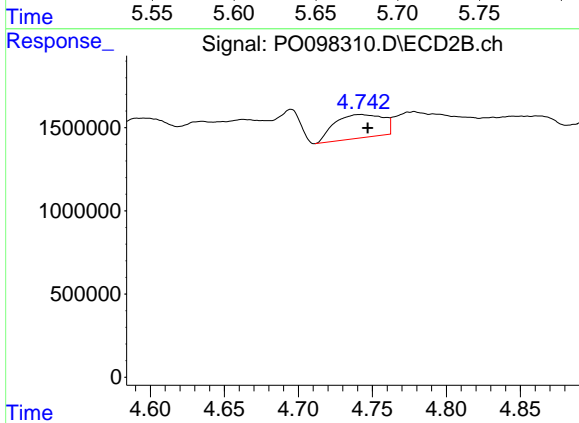
R.T.: 4.742 min
 Delta R.T.: 0.014 min
 Response: 3226563
 Conc: 176.49 ng/ml



#17 AR-1242-2

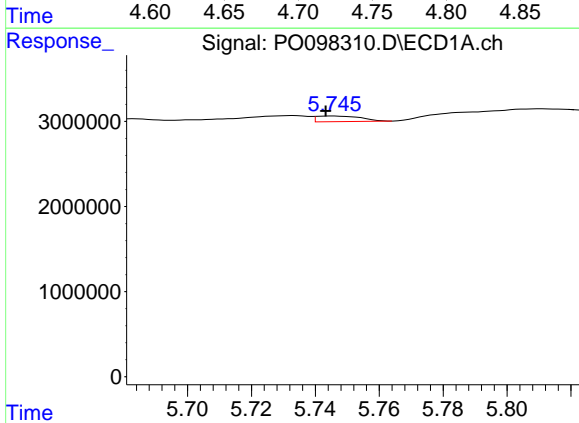
R.T.: 5.683 min
 Delta R.T.: 0.003 min
 Response: 1658120
 Conc: 26.54 ng/ml

Instrument :
 ECD_O
 ClientSampleId :



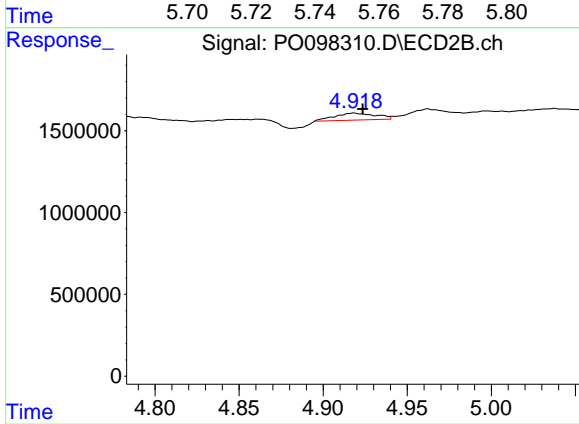
#17 AR-1242-2

R.T.: 4.742 min
 Delta R.T.: -0.005 min
 Response: 3226563
 Conc: 125.42 ng/ml



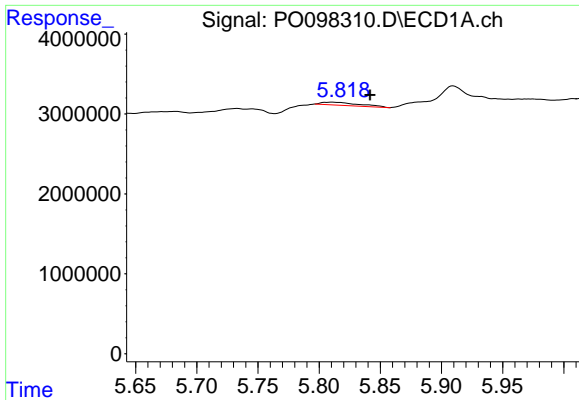
#18 AR-1242-3

R.T.: 5.745 min
 Delta R.T.: 0.002 min
 Response: 631813
 Conc: 16.67 ng/ml



#18 AR-1242-3

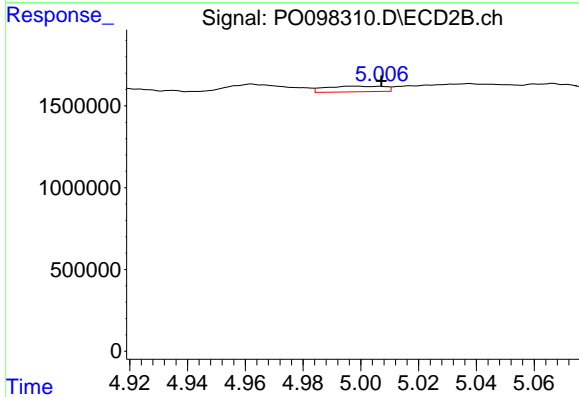
R.T.: 4.918 min
 Delta R.T.: -0.005 min
 Response: 731789
 Conc: 52.07 ng/ml



#19 AR-1242-4

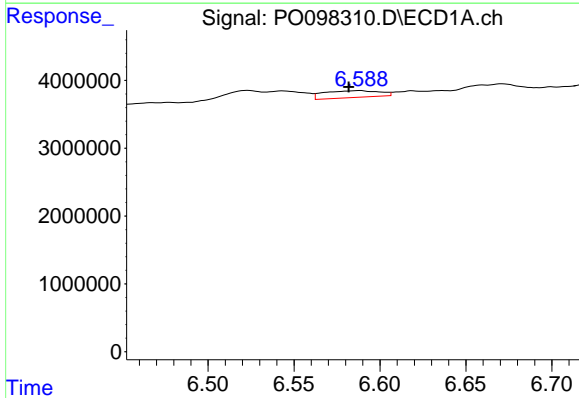
R.T.: 5.811 min
 Delta R.T.: -0.031 min
 Response: 820456
 Conc: 28.40 ng/ml

Instrument :
 ECD_O
 ClientSampleId :



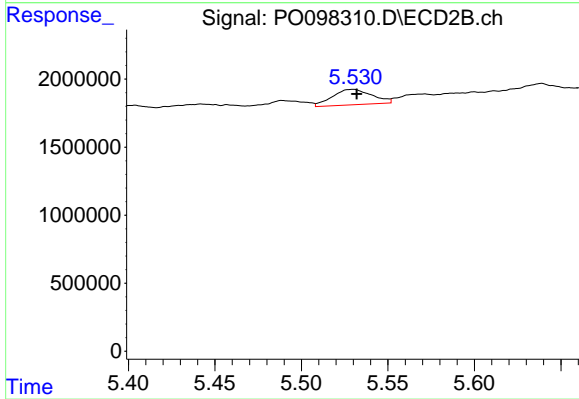
#19 AR-1242-4

R.T.: 4.997 min
 Delta R.T.: -0.010 min
 Response: 482594
 Conc: 32.24 ng/ml



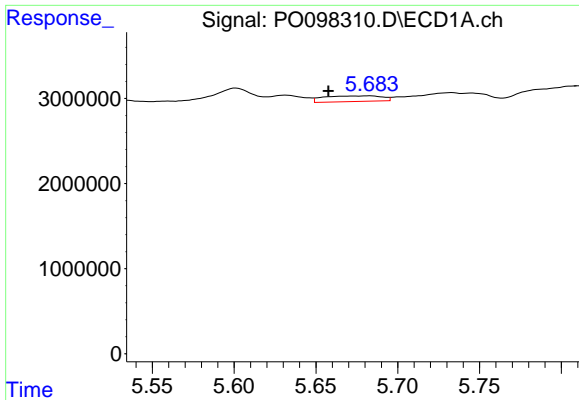
#20 AR-1242-5

R.T.: 6.588 min
 Delta R.T.: 0.006 min
 Response: 2256805
 Conc: 81.25 ng/ml



#20 AR-1242-5

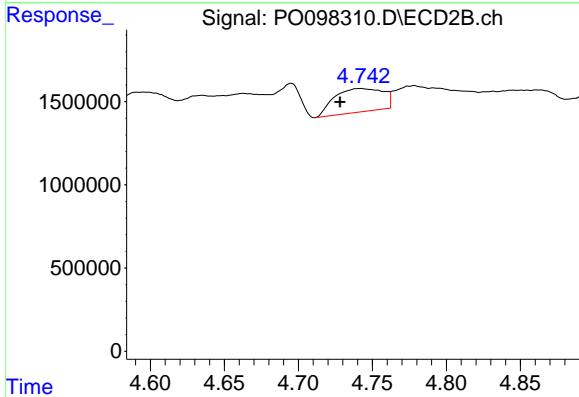
R.T.: 5.530 min
 Delta R.T.: -0.002 min
 Response: 1814143
 Conc: 120.34 ng/ml



#21 AR-1248-1

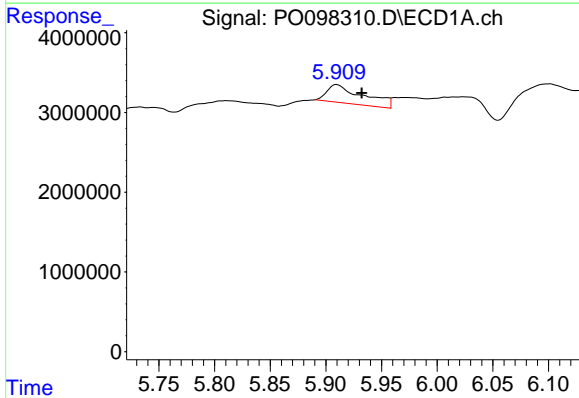
R.T.: 5.683 min
 Delta R.T.: 0.025 min
 Response: 1658120
 Conc: 55.58 ng/ml

Instrument :
 ECD_O
 ClientSampleId :



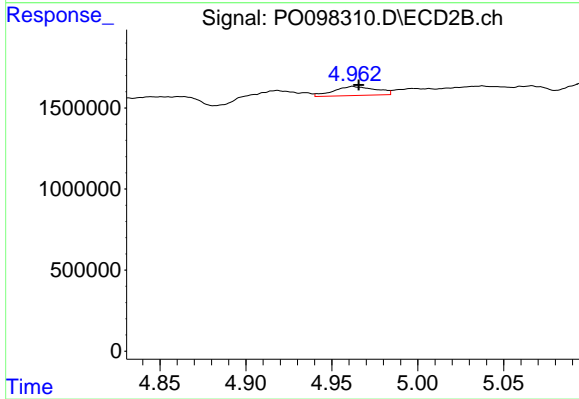
#21 AR-1248-1

R.T.: 4.742 min
 Delta R.T.: 0.014 min
 Response: 3226563
 Conc: 233.28 ng/ml



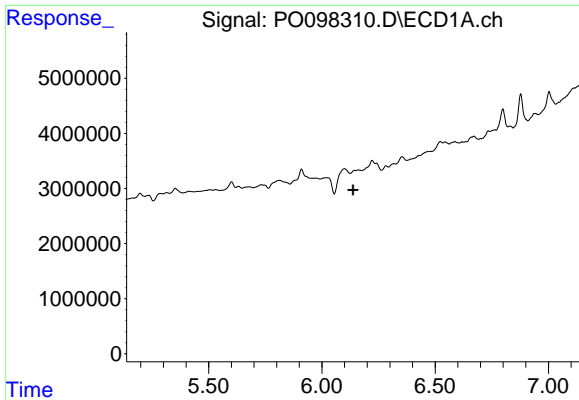
#22 AR-1248-2

R.T.: 5.910 min
 Delta R.T.: -0.023 min
 Response: 5241941
 Conc: 112.24 ng/ml



#22 AR-1248-2

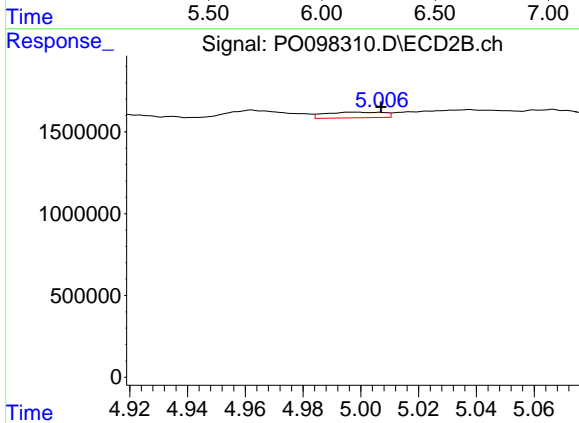
R.T.: 4.962 min
 Delta R.T.: -0.003 min
 Response: 954922
 Conc: 47.74 ng/ml



#23 AR-1248-3

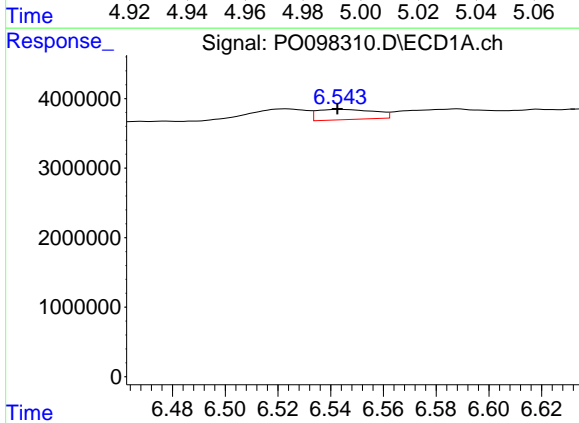
R.T.: 6.143 min
 Delta R.T.: 0.006 min
 Response: -445830
 Conc: N.D.

Instrument :
 ECD_O
 ClientSampleId :



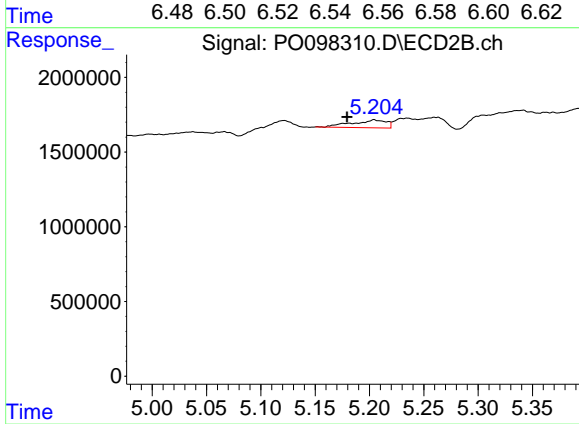
#23 AR-1248-3

R.T.: 4.997 min
 Delta R.T.: -0.010 min
 Response: 482594
 Conc: 22.85 ng/ml



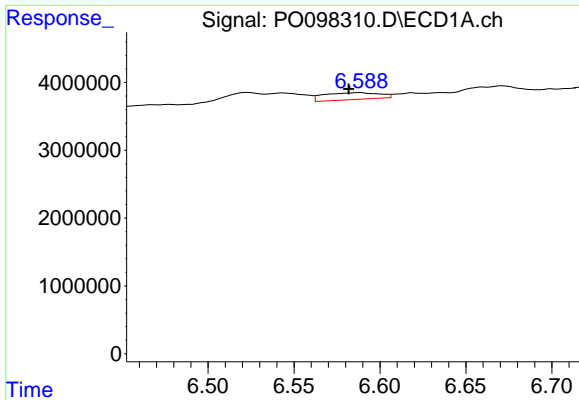
#24 AR-1248-4

R.T.: 6.544 min
 Delta R.T.: 0.001 min
 Response: 2234190
 Conc: 50.25 ng/ml



#24 AR-1248-4

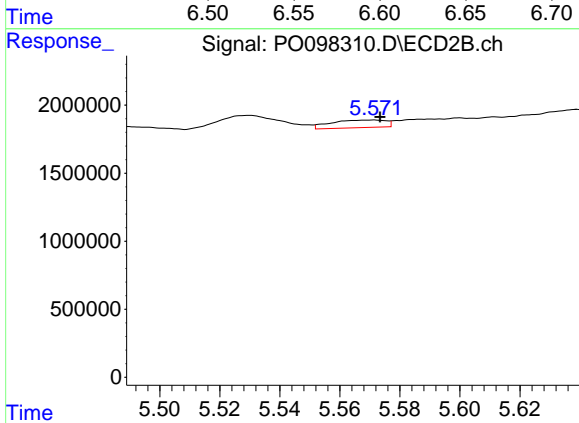
R.T.: 5.204 min
 Delta R.T.: 0.025 min
 Response: 1150240
 Conc: 48.47 ng/ml



#25 AR-1248-5

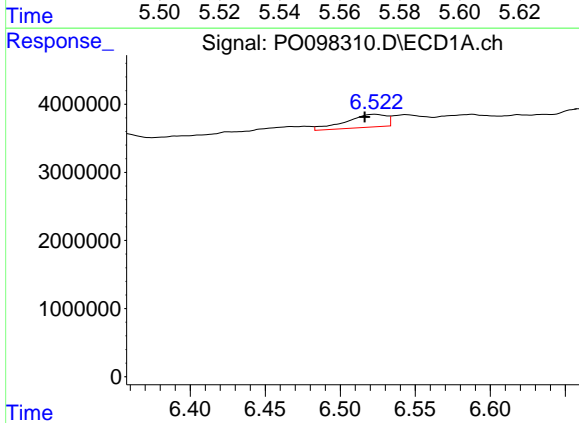
R.T.: 6.588 min
 Delta R.T.: 0.006 min
 Response: 2256805
 Conc: 48.56 ng/ml

Instrument :
 ECD_O
 ClientSampleId :



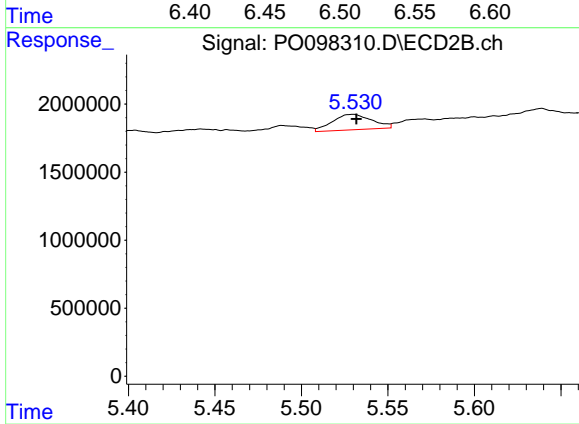
#25 AR-1248-5

R.T.: 5.571 min
 Delta R.T.: -0.002 min
 Response: 710377
 Conc: 36.74 ng/ml



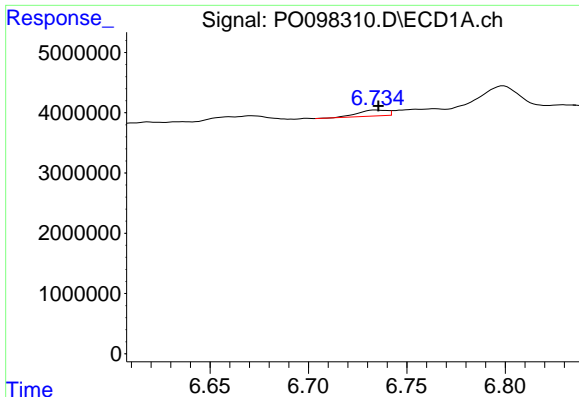
#26 AR-1254-1

R.T.: 6.523 min
 Delta R.T.: 0.006 min
 Response: 3551585
 Conc: 64.99 ng/ml



#26 AR-1254-1

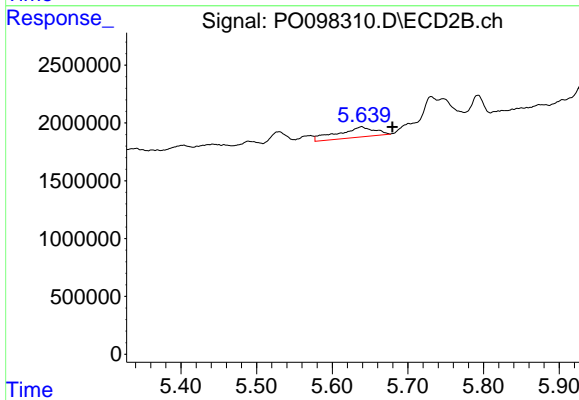
R.T.: 5.530 min
 Delta R.T.: -0.002 min
 Response: 1814143
 Conc: 53.73 ng/ml



#27 AR-1254-2

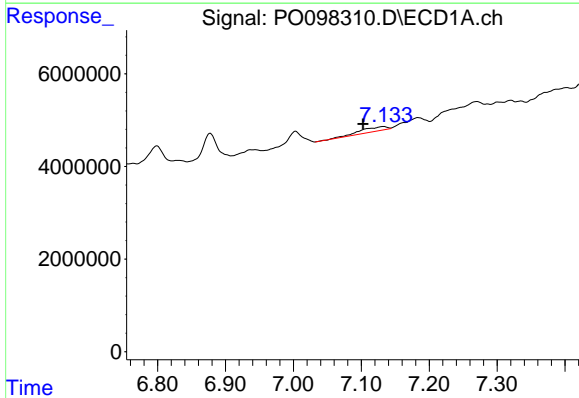
R.T.: 6.734 min
 Delta R.T.: -0.001 min
 Response: 1035516
 Conc: 13.16 ng/ml

Instrument :
 ECD_O
 ClientSampleId :



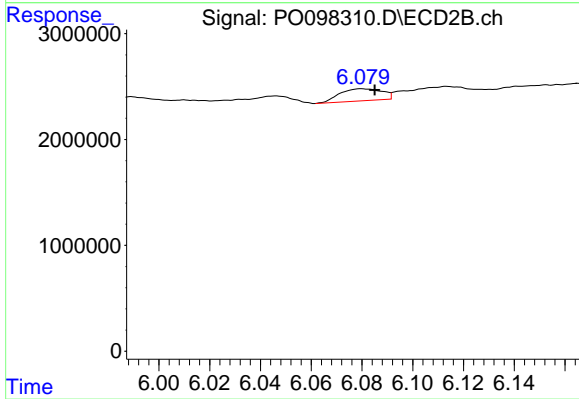
#27 AR-1254-2

R.T.: 5.639 min
 Delta R.T.: -0.041 min
 Response: 3022241
 Conc: 103.71 ng/ml



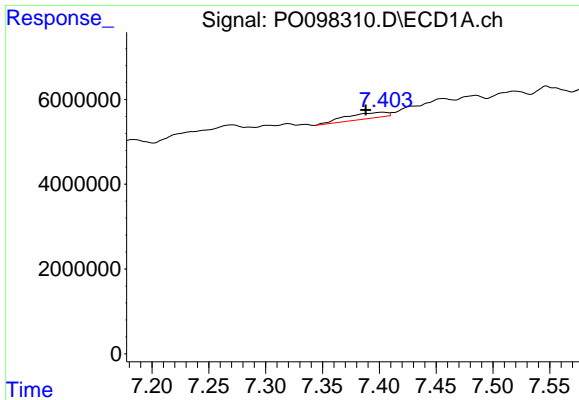
#28 AR-1254-3

R.T.: 7.133 min
 Delta R.T.: 0.031 min
 Response: 2517419
 Conc: 34.57 ng/ml



#28 AR-1254-3

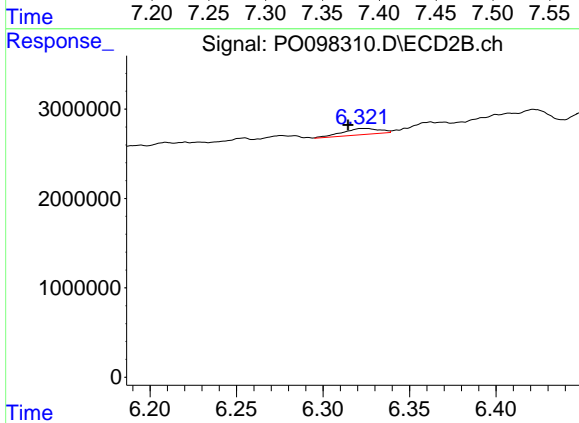
R.T.: 6.080 min
 Delta R.T.: -0.005 min
 Response: 1316058
 Conc: 30.84 ng/ml



#29 AR-1254-4

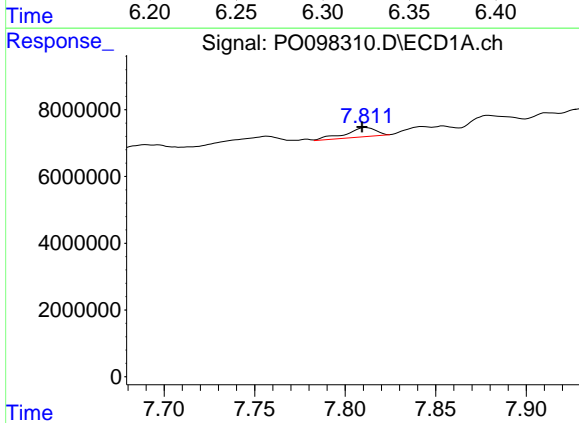
R.T.: 7.403 min
 Delta R.T.: 0.015 min
 Response: 3484230
 Conc: 84.92 ng/ml

Instrument :
 ECD_O
 ClientSampleId :



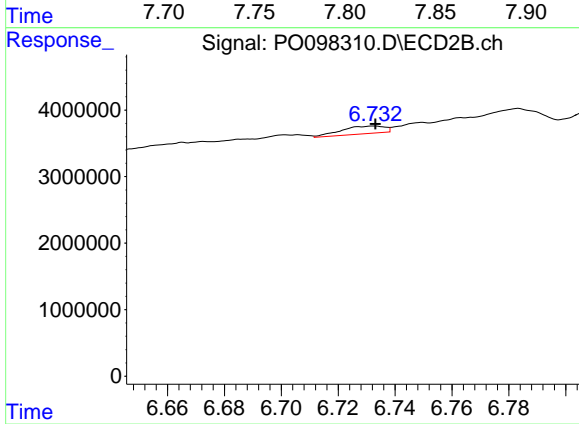
#29 AR-1254-4

R.T.: 6.324 min
 Delta R.T.: 0.009 min
 Response: 1026027
 Conc: 49.21 ng/ml



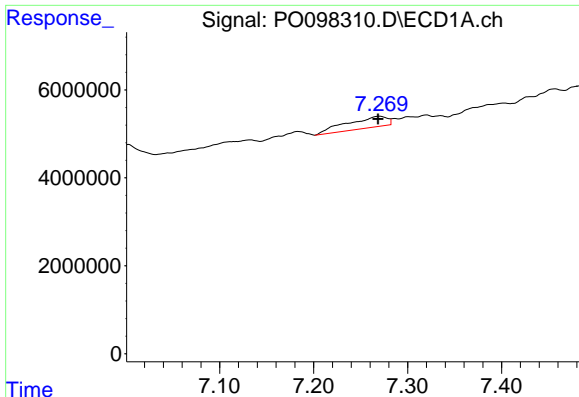
#30 AR-1254-5

R.T.: 7.811 min
 Delta R.T.: 0.002 min
 Response: 3209818
 Conc: 66.27 ng/ml



#30 AR-1254-5

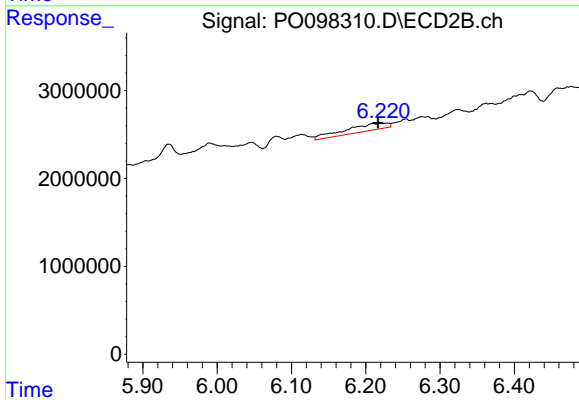
R.T.: 6.733 min
 Delta R.T.: 0.000 min
 Response: 1200939
 Conc: 36.53 ng/ml



#31 AR-1260-1

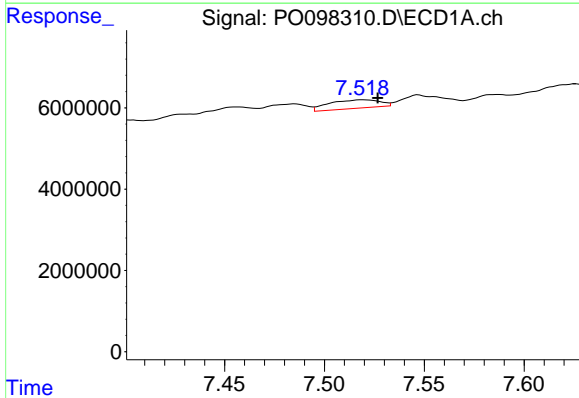
R.T.: 7.270 min
 Delta R.T.: 0.002 min
 Response: 7516585
 Conc: 131.20 ng/ml

Instrument :
 ECD_O
 ClientSampleId :



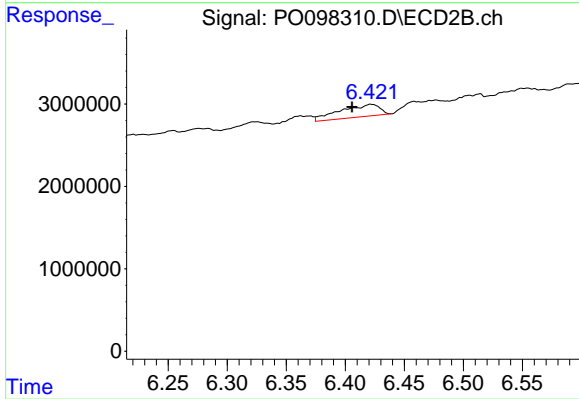
#31 AR-1260-1

R.T.: 6.220 min
 Delta R.T.: 0.004 min
 Response: 3260018
 Conc: 106.60 ng/ml



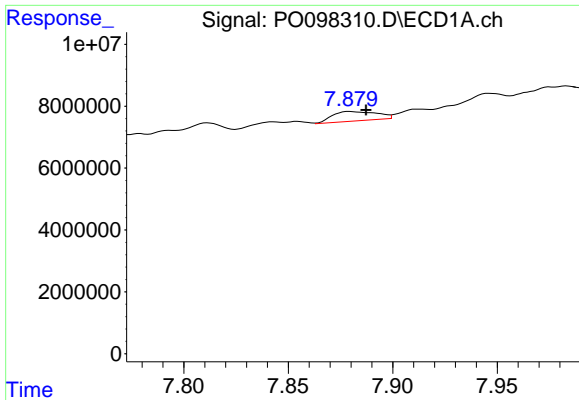
#32 AR-1260-2

R.T.: 7.519 min
 Delta R.T.: -0.008 min
 Response: 3653813
 Conc: 59.01 ng/ml



#32 AR-1260-2

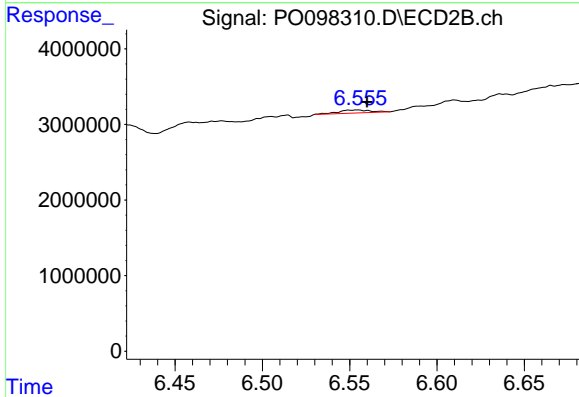
R.T.: 6.422 min
 Delta R.T.: 0.016 min
 Response: 3455265
 Conc: 109.18 ng/ml



#33 AR-1260-3

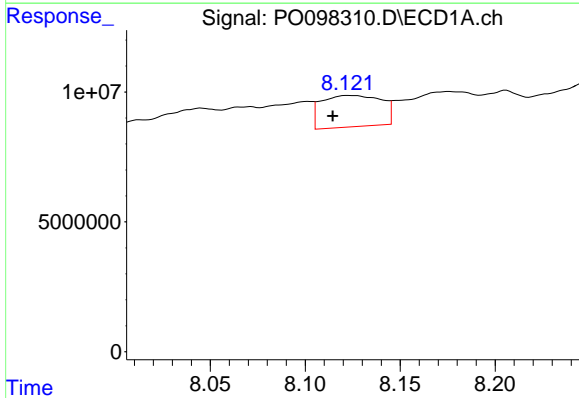
R.T.: 7.879 min
 Delta R.T.: -0.008 min
 Response: 4592174
 Conc: 94.33 ng/ml

Instrument :
 ECD_O
 ClientSampleId :



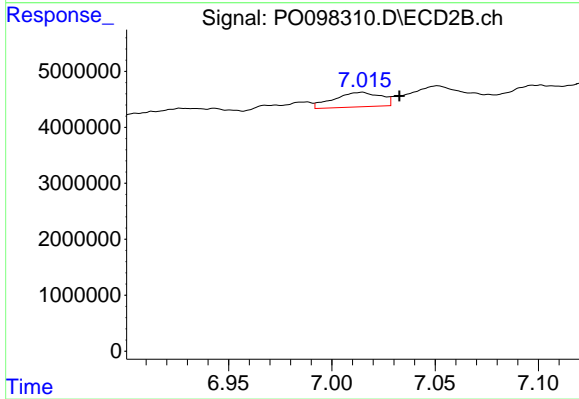
#33 AR-1260-3

R.T.: 6.554 min
 Delta R.T.: -0.006 min
 Response: 512168
 Conc: 16.32 ng/ml



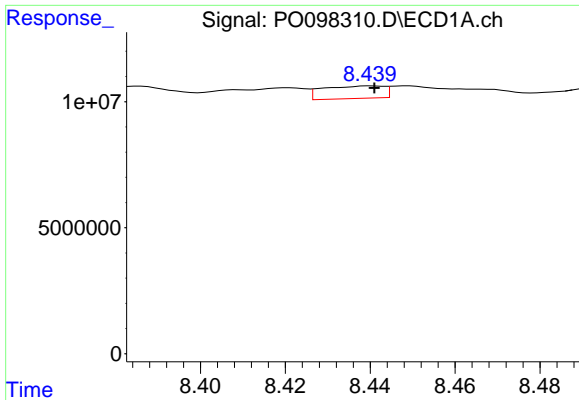
#34 AR-1260-4

R.T.: 8.123 min
 Delta R.T.: 0.008 min
 Response: 26619250
 Conc: 520.29 ng/ml



#34 AR-1260-4

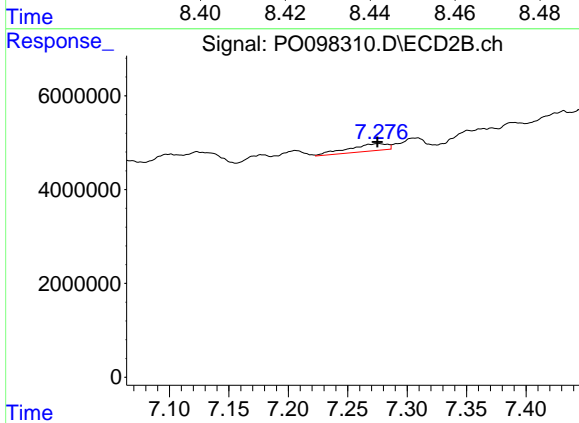
R.T.: 7.015 min
 Delta R.T.: -0.018 min
 Response: 4121230
 Conc: 168.60 ng/ml



#35 AR-1260-5

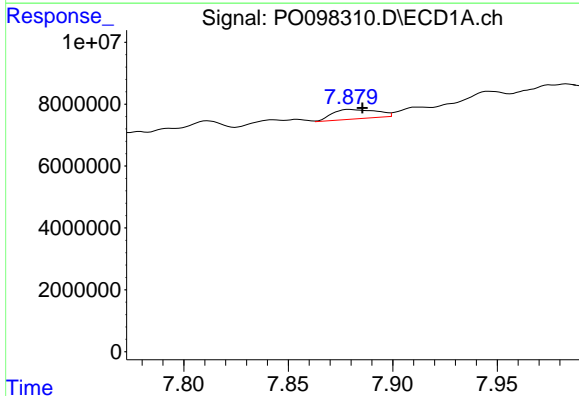
R.T.: 8.440 min
 Delta R.T.: 0.000 min
 Response: 4972958
 Conc: 53.59 ng/ml

Instrument :
 ECD_O
 ClientSampleId :



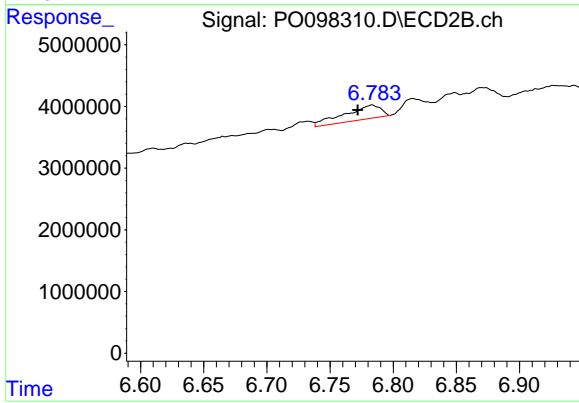
#35 AR-1260-5

R.T.: 7.276 min
 Delta R.T.: 0.000 min
 Response: 3587297
 Conc: 76.26 ng/ml



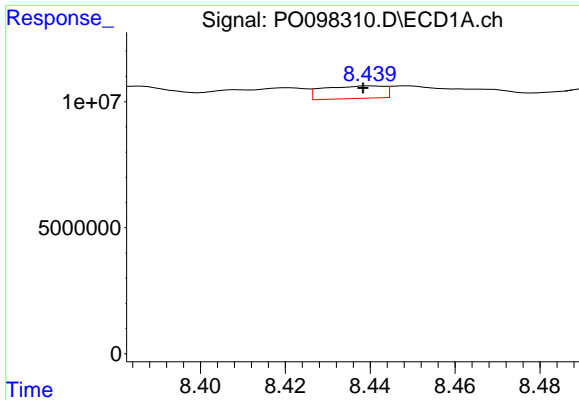
#36 AR-1262-1

R.T.: 7.879 min
 Delta R.T.: -0.006 min
 Response: 4592174
 Conc: 63.61 ng/ml



#36 AR-1262-1

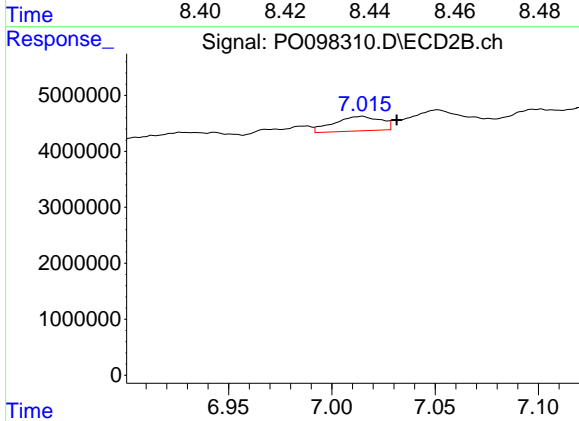
R.T.: 6.783 min
 Delta R.T.: 0.011 min
 Response: 4508091
 Conc: 116.25 ng/ml



#37 AR-1262-2

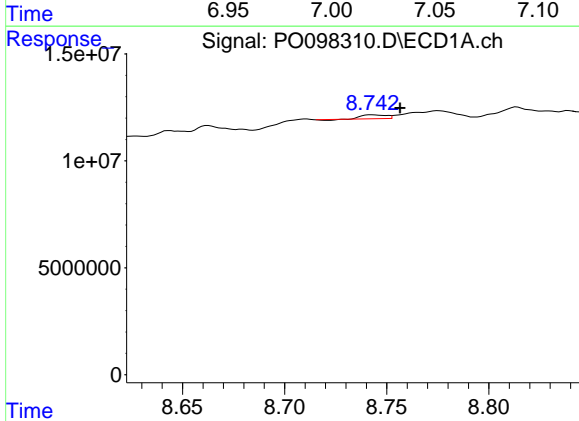
R.T.: 8.440 min
 Delta R.T.: 0.002 min
 Response: 4972958
 Conc: 47.15 ng/ml

Instrument :
 ECD_O
 ClientSampleId :



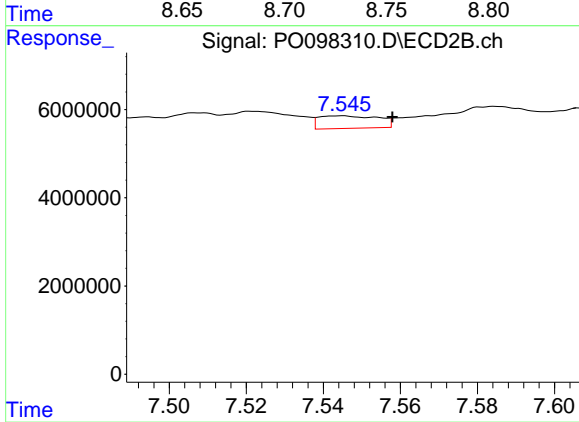
#37 AR-1262-2

R.T.: 7.015 min
 Delta R.T.: -0.017 min
 Response: 4121230
 Conc: 120.61 ng/ml



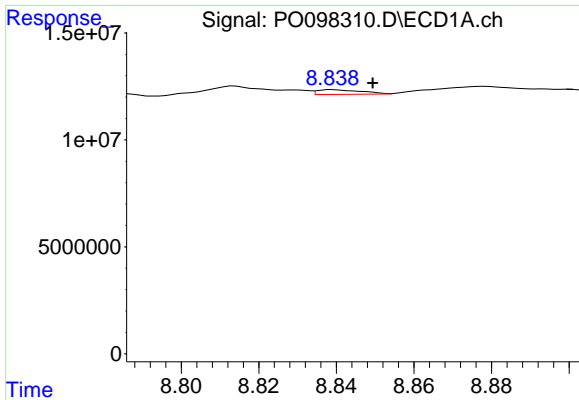
#38 AR-1262-3

R.T.: 8.743 min
 Delta R.T.: -0.014 min
 Response: 1344074
 Conc: 18.44 ng/ml



#38 AR-1262-3

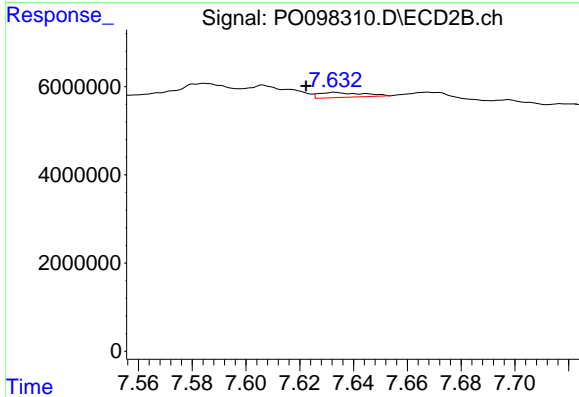
R.T.: 7.544 min
 Delta R.T.: -0.014 min
 Response: 3043537
 Conc: 126.40 ng/ml



#39 AR-1262-4

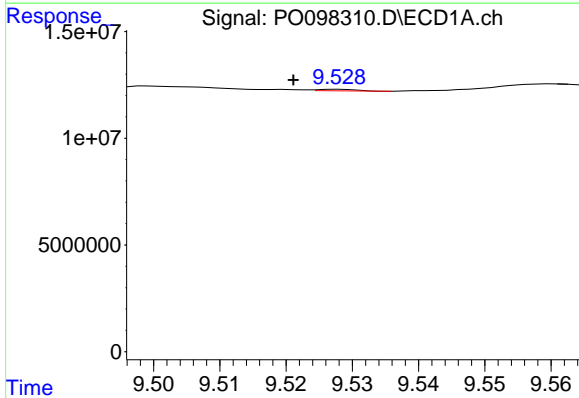
R.T.: 8.839 min
 Delta R.T.: -0.010 min
 Response: 1726105
 Conc: 29.61 ng/ml

Instrument :
 ECD_O
 ClientSampleId :



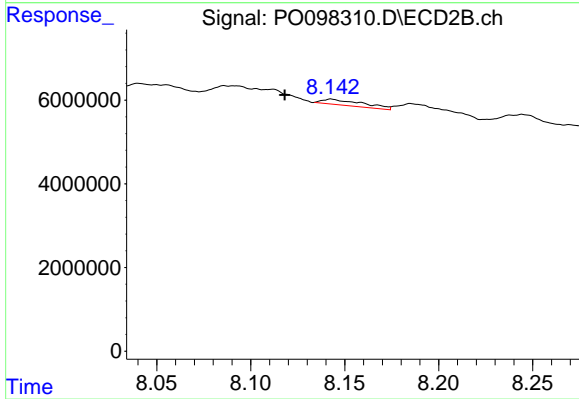
#39 AR-1262-4

R.T.: 7.633 min
 Delta R.T.: 0.011 min
 Response: 1261170
 Conc: 30.75 ng/ml



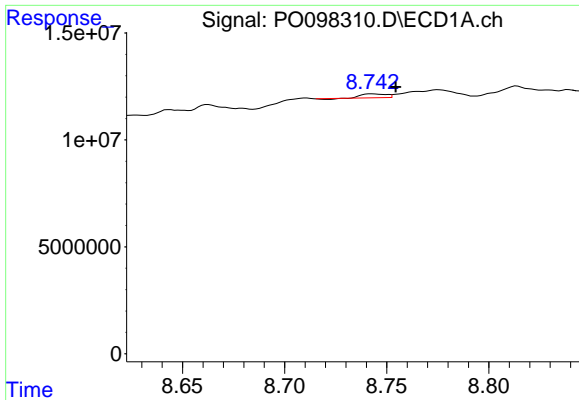
#40 AR-1262-5

R.T.: 9.528 min
 Delta R.T.: 0.007 min
 Response: 286080
 Conc: 9.07 ng/ml



#40 AR-1262-5

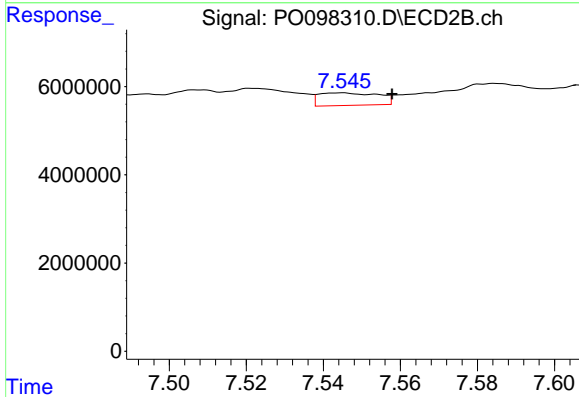
R.T.: 8.143 min
 Delta R.T.: 0.025 min
 Response: 2074787
 Conc: 116.57 ng/ml



#41 AR-1268-1

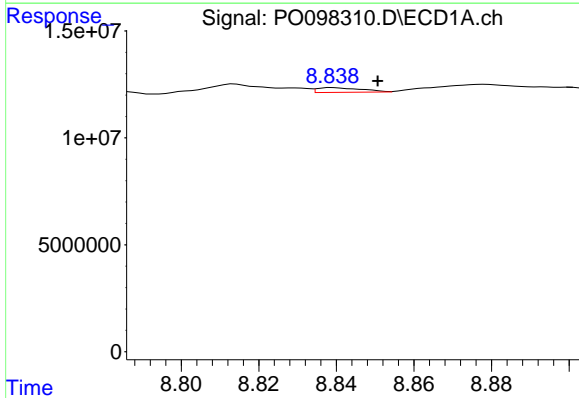
R.T.: 8.743 min
 Delta R.T.: -0.012 min
 Response: 1344074
 Conc: 9.82 ng/ml

Instrument :
 ECD_O
 ClientSampleId :



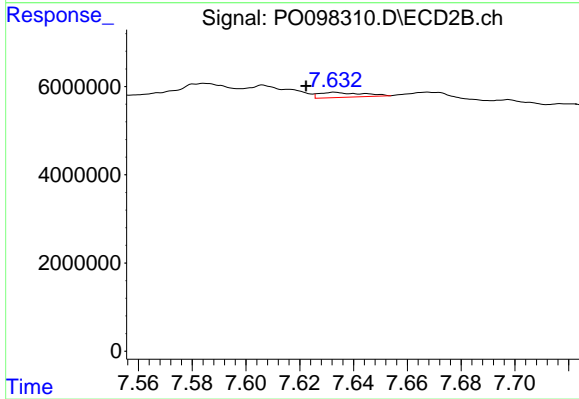
#41 AR-1268-1

R.T.: 7.544 min
 Delta R.T.: -0.013 min
 Response: 3043537
 Conc: 43.00 ng/ml



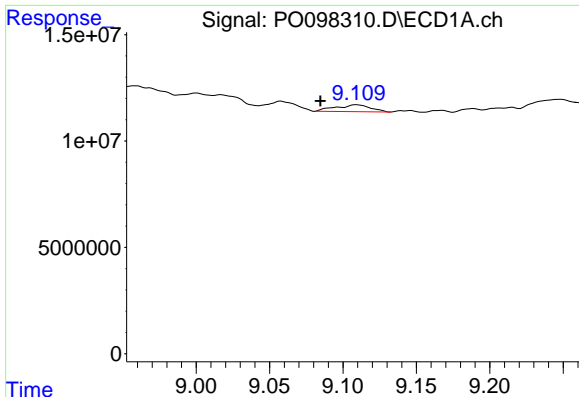
#42 AR-1268-2

R.T.: 8.839 min
 Delta R.T.: -0.011 min
 Response: 1726105
 Conc: 14.21 ng/ml



#42 AR-1268-2

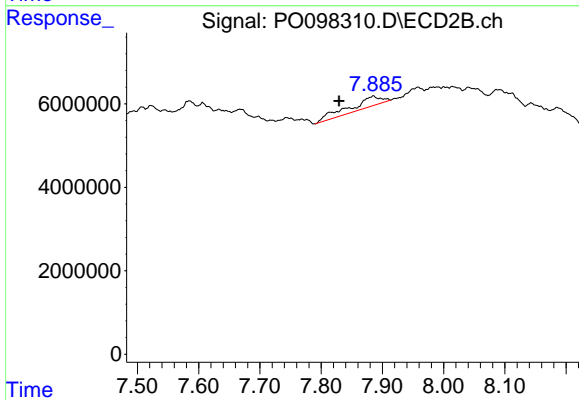
R.T.: 7.633 min
 Delta R.T.: 0.011 min
 Response: 1261170
 Conc: 21.08 ng/ml



#43 AR-1268-3

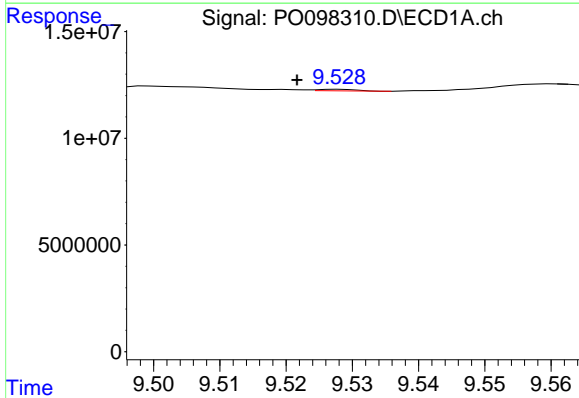
R.T.: 9.109 min
 Delta R.T.: 0.025 min
 Response: 5295514
 Conc: 47.88 ng/ml

Instrument :
 ECD_O
 ClientSampleId :



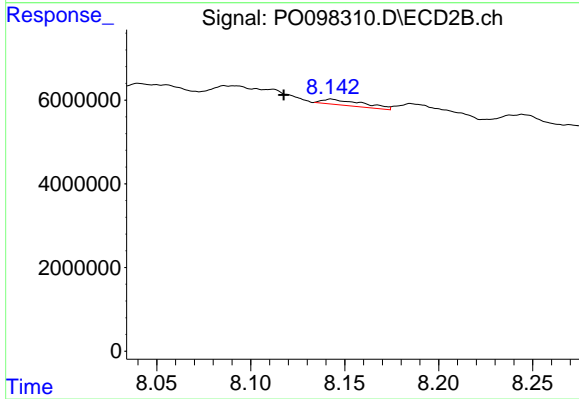
#43 AR-1268-3

R.T.: 7.885 min
 Delta R.T.: 0.056 min
 Response: 9085247
 Conc: 161.17 ng/ml



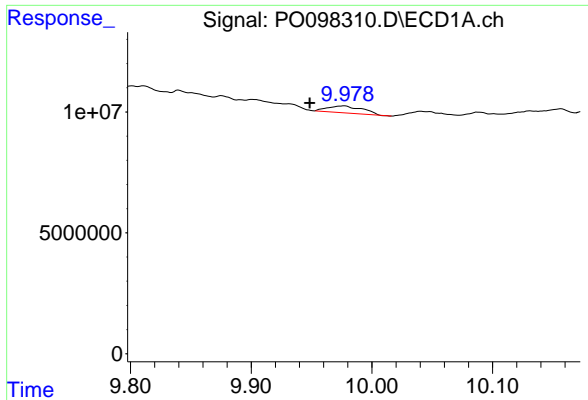
#44 AR-1268-4

R.T.: 9.528 min
 Delta R.T.: 0.006 min
 Response: 286080
 Conc: 8.20 ng/ml



#44 AR-1268-4

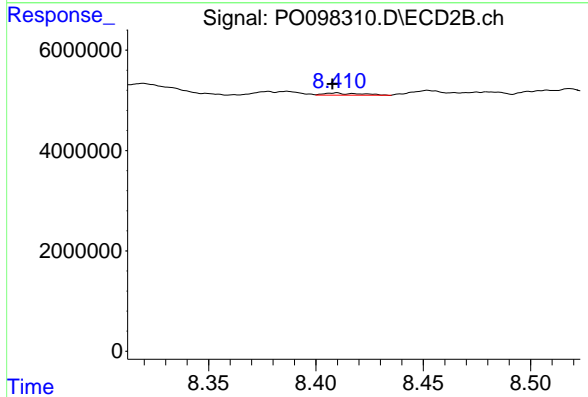
R.T.: 8.143 min
 Delta R.T.: 0.025 min
 Response: 2074787
 Conc: 108.93 ng/ml



#45 AR-1268-5

R.T.: 9.978 min
 Delta R.T.: 0.029 min
 Response: 5742970
 Conc: 17.74 ng/ml

Instrument :
 ECD_O
 ClientSampleId :



#45 AR-1268-5

R.T.: 8.409 min
 Delta R.T.: 0.001 min
 Response: 513490
 Conc: 3.47 ng/ml