

Data Path : Z:\pestpcbsrv\HPCHEM1\ECD_0\Data\P0092623\
 Data File : P0098265.D
 Signal(s) : Signal #1: ECD1A.ch Signal #2: ECD2B.ch
 Acq On : 26 Sep 2023 13:51
 Operator : YP/AJ
 Sample : PB155832BS
 Misc :
 ALS Vial : 8 Sample Multiplier: 1

Instrument :
 ECD_0
ClientSampleId :
 PB155832BS

Manual Integrations
APPROVED

Reviewed By :Yogesh Patel 09/27/2023
 Supervised By :Ankita Jodhani 09/27/2023

Integration File signal 1: autoint1.e
 Integration File signal 2: autoint2.e
 Quant Time: Sep 26 15:28:45 2023
 Quant Method : Z:\pestpcbsrv\HPCHEM1\ECD_0\methods\P0092523.M
 Quant Title : GC EXTRACTABLES
 QLast Update : Tue Sep 26 09:03:52 2023
 Response via : Initial Calibration
 Integrator: ChemStation

Volume Inj. : 2 µl
 Signal #1 Phase : ZB-MR1 Signal #2 Phase: ZB-MR2
 Signal #1 Info : 30Mx0.32mmx 0.50µ Signal #2 Info : 30M x 0.32mm x 0.25µm

Compound	RT#1	RT#2	Resp#1	Resp#2	ng/ml	ng/ml

System Monitoring Compounds						
1) SA Tetrachlo...	4.483	3.638	40639803	14691334	21.288	19.355
2) SA Decachlor...	10.295	8.655	18882056	8731356	23.490	22.674m
Target Compounds						
3) L1 AR-1016-1	5.657	4.724	22432110	9859530	493.788	480.013
4) L1 AR-1016-2	5.681	4.743	34606432	13752043	488.241	470.835
5) L1 AR-1016-3	5.743	4.919	21666198	7463387	500.988	475.956
6) L1 AR-1016-4	5.841	4.961	16369589	6595277	495.777	489.718
7) L1 AR-1016-5	6.137	5.174	17524994	8211040	492.171	479.602
31) L7 AR-1260-1	7.267	6.210	29601106	14393489	516.681	470.635
32) L7 AR-1260-2	7.525	6.399	29785366	15292859	481.017	483.222
33) L7 AR-1260-3	7.884	6.553	21158968	14762468	434.654	470.383
34) L7 AR-1260-4	8.112	7.026	23437906	10592804	458.105	433.363
35) L7 AR-1260-5	8.437	7.268	39105241	21364344	421.397	454.183

(f)=RT Delta > 1/2 Window (#)=Amounts differ by > 25% (m)=manual int.

Data Path : Z:\pestpcbsrv\HPCHEM1\ECD_O\Data\PO092623\
 Data File : PO098265.D
 Signal(s) : Signal #1: ECD1A.ch Signal #2: ECD2B.ch
 Acq On : 26 Sep 2023 13:51
 Operator : YP/AJ
 Sample : PB155832BS
 Misc :
 ALS Vial : 8 Sample Multiplier: 1

Instrument :

ECD_O

ClientSampleId :

PB155832BS

Manual Integrations

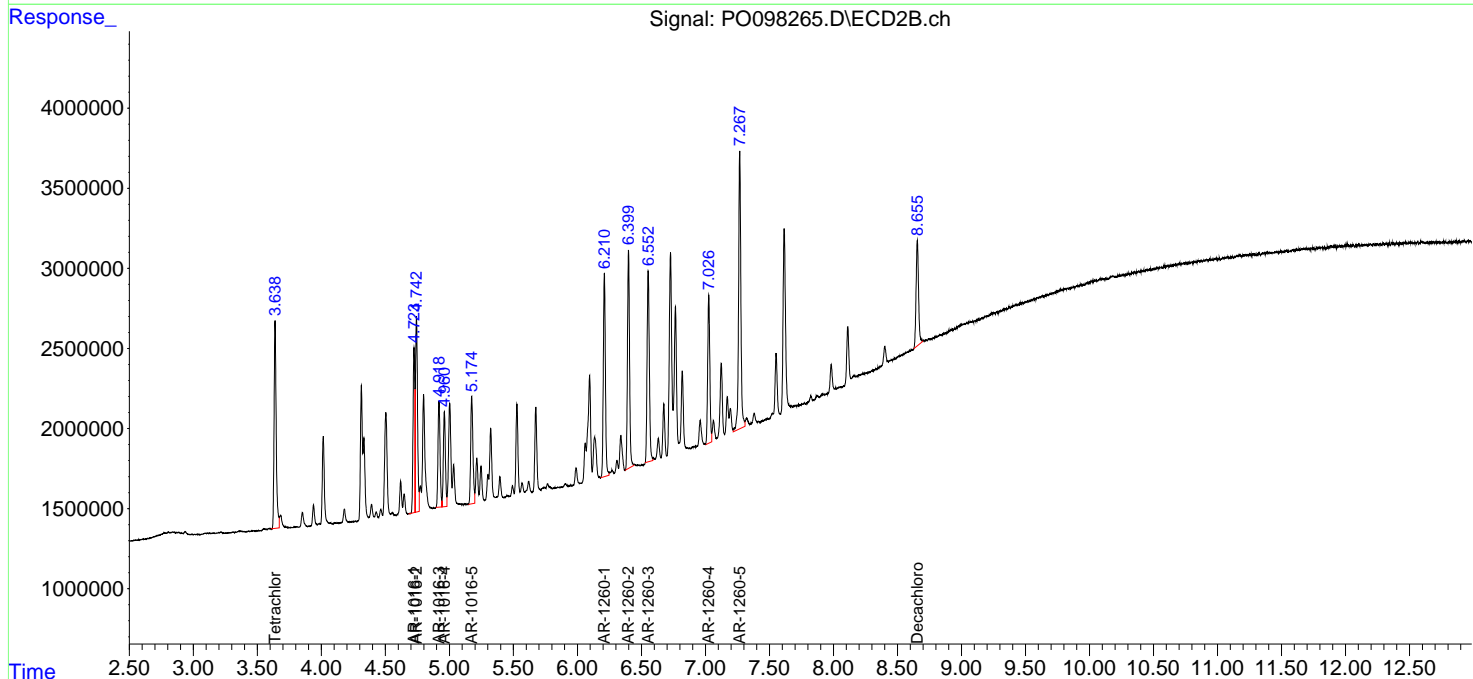
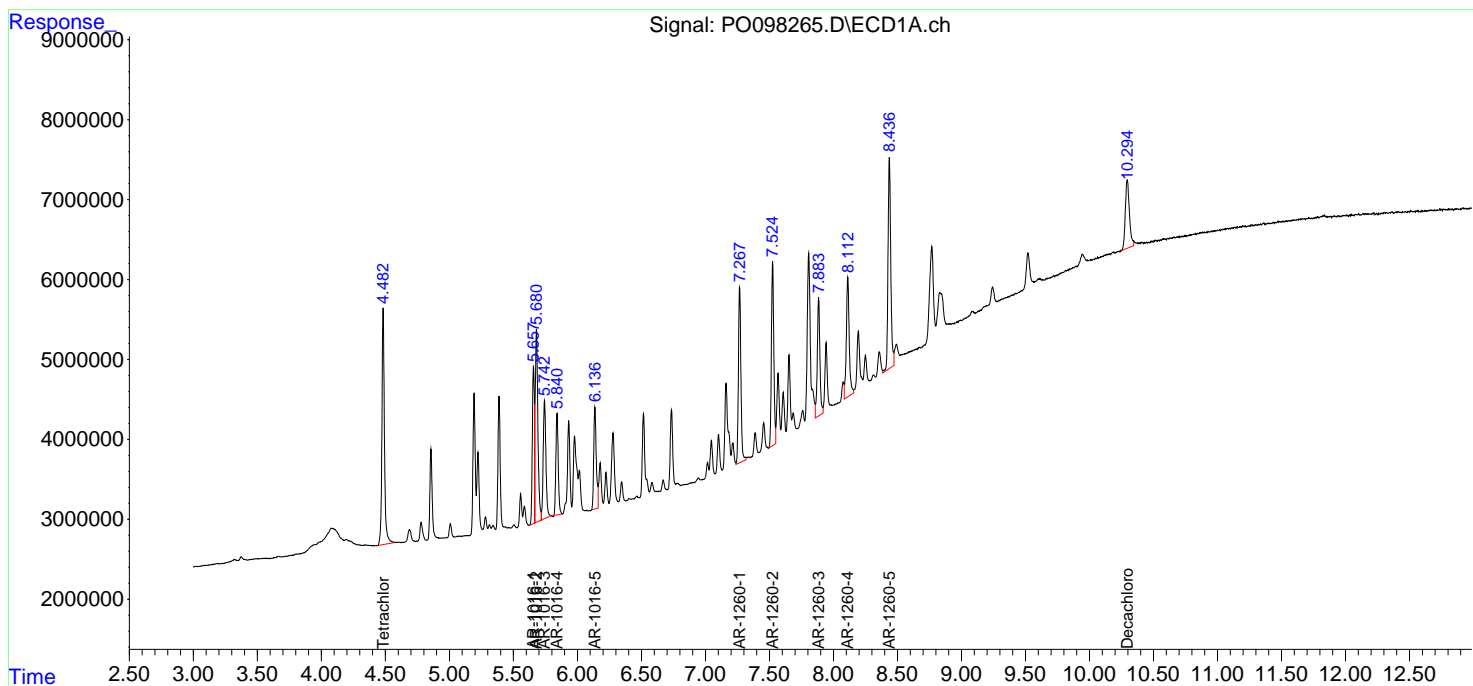
APPROVED

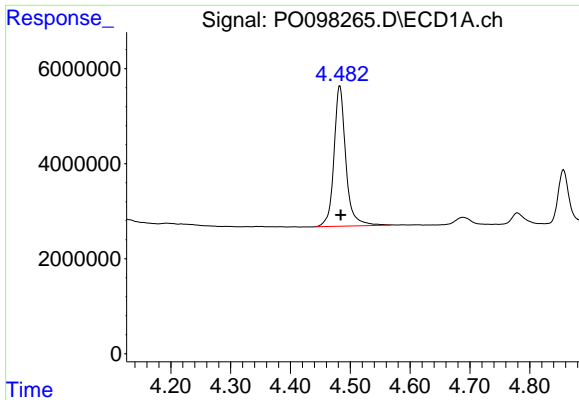
Reviewed By :Yogesh Patel 09/27/2023

Supervised By :Ankita Jodhani 09/27/2023

Integration File signal 1: autoint1.e
 Integration File signal 2: autoint2.e
 Quant Time: Sep 26 15:28:45 2023
 Quant Method : Z:\pestpcbsrv\HPCHEM1\ECD_O\methods\PO092523.M
 Quant Title : GC EXTRACTABLES
 QLast Update : Tue Sep 26 09:03:52 2023
 Response via : Initial Calibration
 Integrator: ChemStation

Volume Inj. : 2 µl
 Signal #1 Phase : ZB-MR1 Signal #2 Phase: ZB-MR2
 Signal #1 Info : 30Mx0.32mmx 0.50µ Signal #2 Info : 30M x 0.32mm x 0.25µm



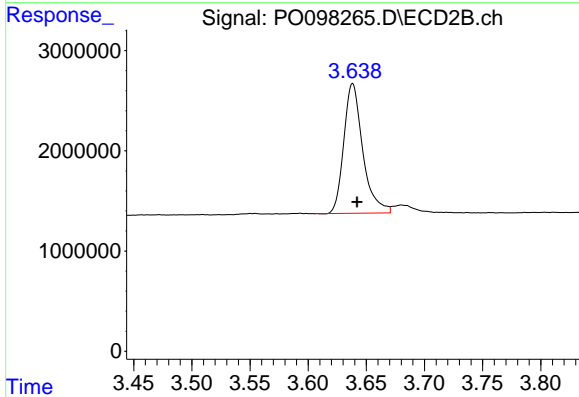


#1 Tetrachloro-m-xylene
 R.T.: 4.483 min
 Delta R.T.: -0.001 min
 Response: 40639803
 Conc: 21.29 ng/ml

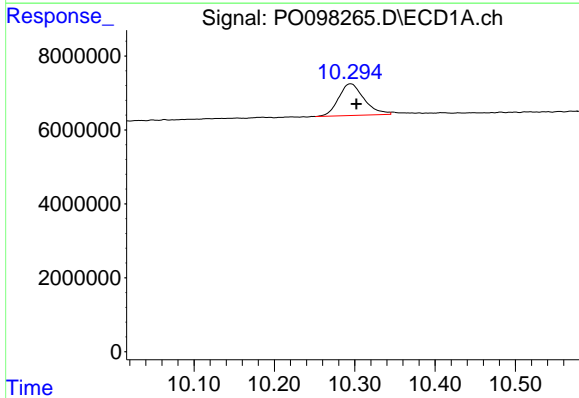
Instrument :
 ECD_O
 ClientSampleId :
 PB155832BS

Manual Integrations
 APPROVED

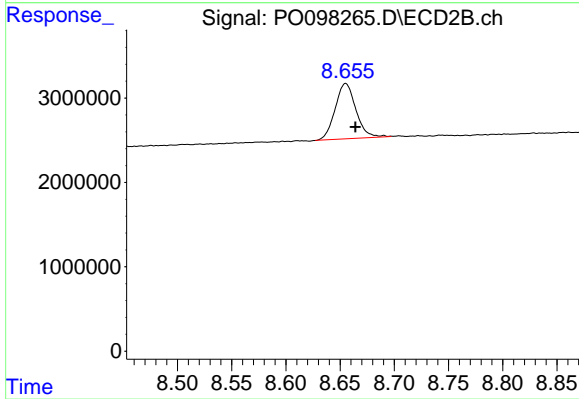
Reviewed By :Yogesh Patel 09/27/2023
 Supervised By :Ankita Jodhani 09/27/2023



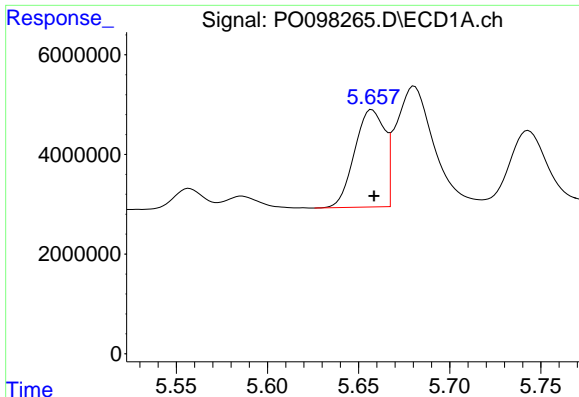
#1 Tetrachloro-m-xylene
 R.T.: 3.638 min
 Delta R.T.: -0.004 min
 Response: 14691334
 Conc: 19.35 ng/ml



#2 Decachlorobiphenyl
 R.T.: 10.295 min
 Delta R.T.: -0.007 min
 Response: 18882056
 Conc: 23.49 ng/ml



#2 Decachlorobiphenyl
 R.T.: 8.655 min
 Delta R.T.: -0.009 min
 Response: 8731356
 Conc: 22.67 ng/ml m



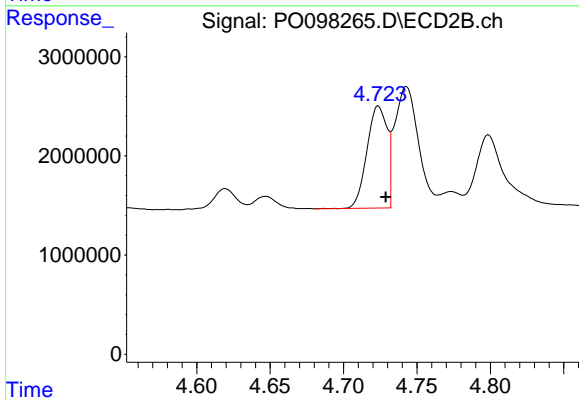
#3 AR-1016-1

R.T.: 5.657 min
 Delta R.T.: -0.001 min
 Response: 22432110
 Conc: 493.79 ng/ml

Instrument :
 ECD_O
 ClientSampleId :
 PB155832BS

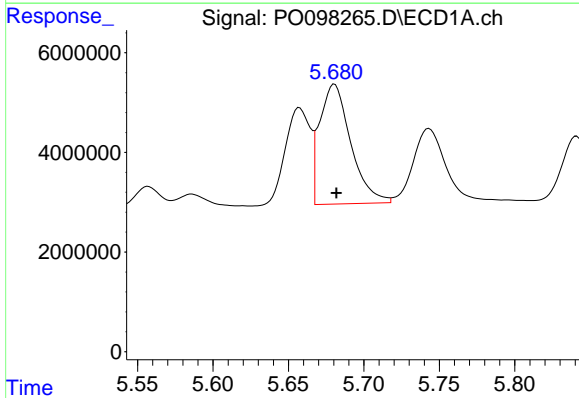
Manual Integrations
 APPROVED

Reviewed By :Yogesh Patel 09/27/2023
 Supervised By :Ankita Jodhani 09/27/2023



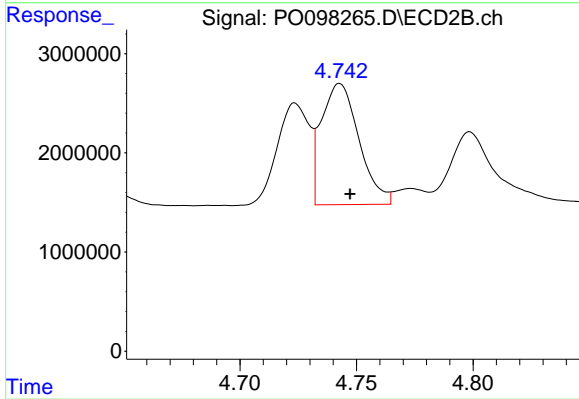
#3 AR-1016-1

R.T.: 4.724 min
 Delta R.T.: -0.005 min
 Response: 9859530
 Conc: 480.01 ng/ml



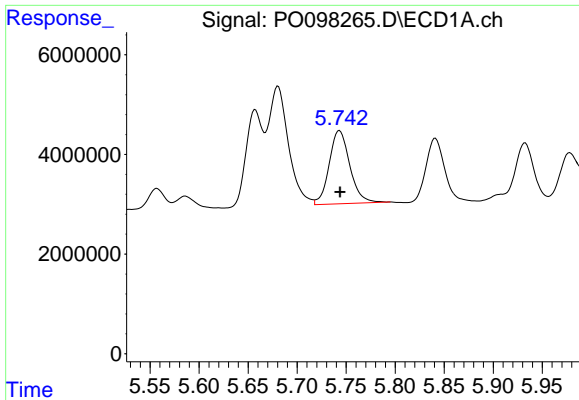
#4 AR-1016-2

R.T.: 5.681 min
 Delta R.T.: -0.001 min
 Response: 34606432
 Conc: 488.24 ng/ml



#4 AR-1016-2

R.T.: 4.743 min
 Delta R.T.: -0.004 min
 Response: 13752043
 Conc: 470.83 ng/ml



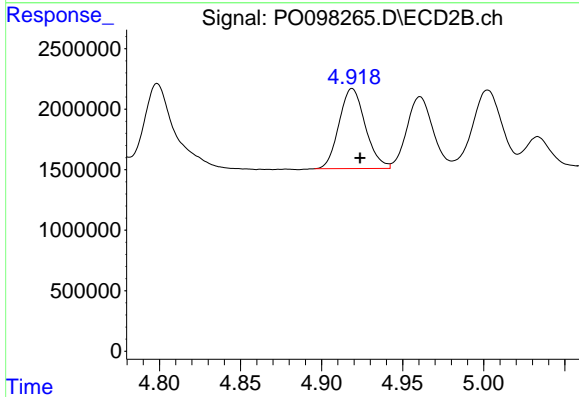
#5 AR-1016-3

R.T.: 5.743 min
 Delta R.T.: 0.000 min
 Response: 21666198
 Conc: 500.99 ng/ml

Instrument :
 ECD_O
 ClientSampleId :
 PB155832BS

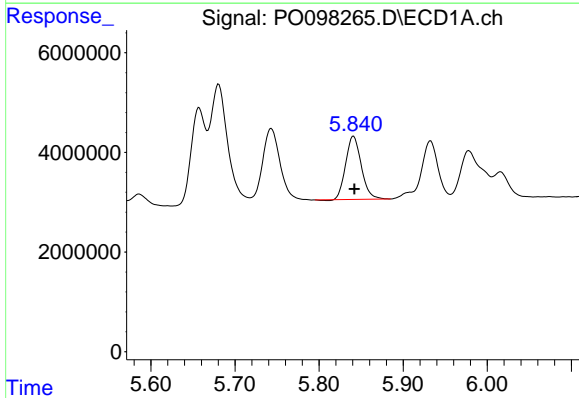
Manual Integrations
 APPROVED

Reviewed By :Yogesh Patel 09/27/2023
 Supervised By :Ankita Jodhani 09/27/2023



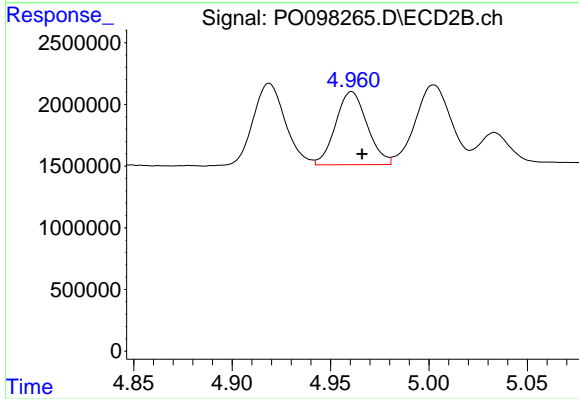
#5 AR-1016-3

R.T.: 4.919 min
 Delta R.T.: -0.005 min
 Response: 7463387
 Conc: 475.96 ng/ml



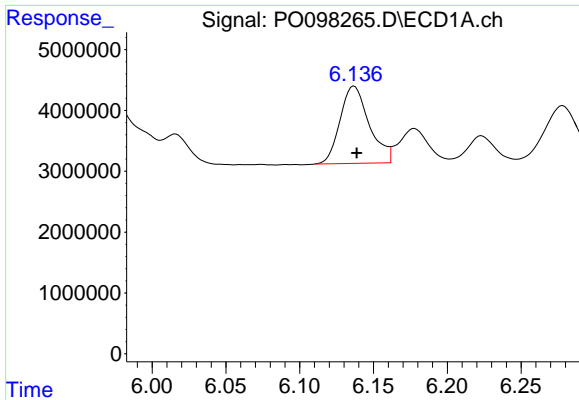
#6 AR-1016-4

R.T.: 5.841 min
 Delta R.T.: -0.001 min
 Response: 16369589
 Conc: 495.78 ng/ml



#6 AR-1016-4

R.T.: 4.961 min
 Delta R.T.: -0.005 min
 Response: 6595277
 Conc: 489.72 ng/ml



#7 AR-1016-5

R.T.: 6.137 min
 Delta R.T.: -0.002 min
 Response: 17524994
 Conc: 492.17 ng/ml

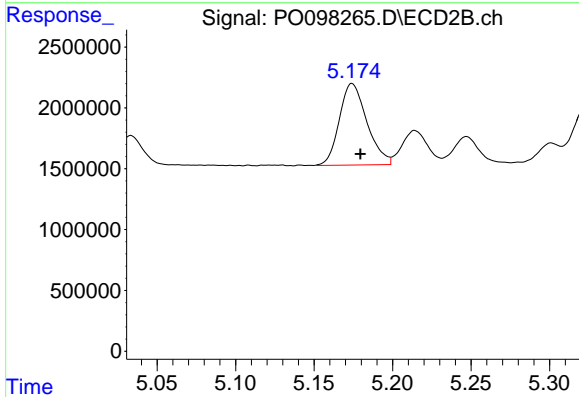
Instrument :

ECD_O

ClientSampleId :
 PB155832BS

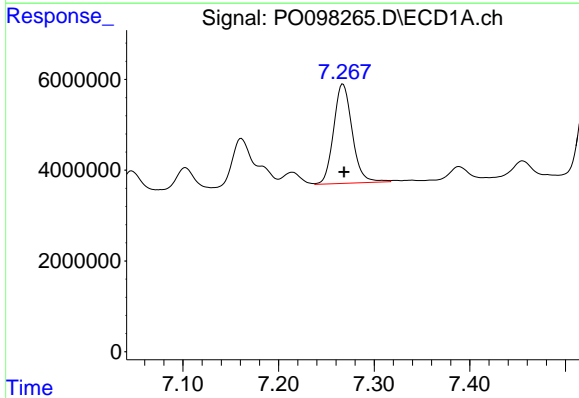
Manual Integrations
 APPROVED

Reviewed By :Yogesh Patel 09/27/2023
 Supervised By :Ankita Jodhani 09/27/2023



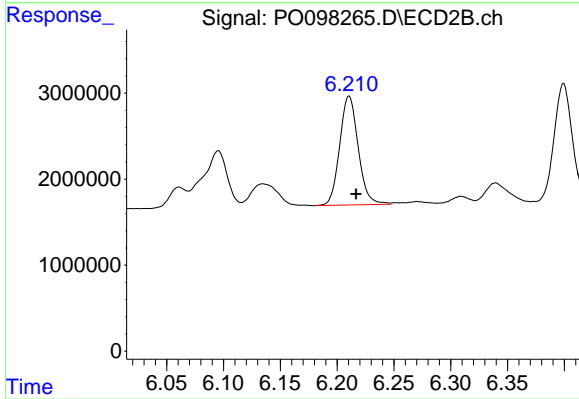
#7 AR-1016-5

R.T.: 5.174 min
 Delta R.T.: -0.005 min
 Response: 8211040
 Conc: 479.60 ng/ml



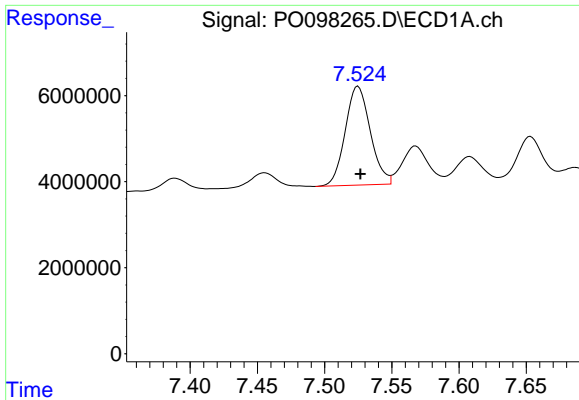
#31 AR-1260-1

R.T.: 7.267 min
 Delta R.T.: -0.001 min
 Response: 29601106
 Conc: 516.68 ng/ml



#31 AR-1260-1

R.T.: 6.210 min
 Delta R.T.: -0.006 min
 Response: 14393489
 Conc: 470.63 ng/ml



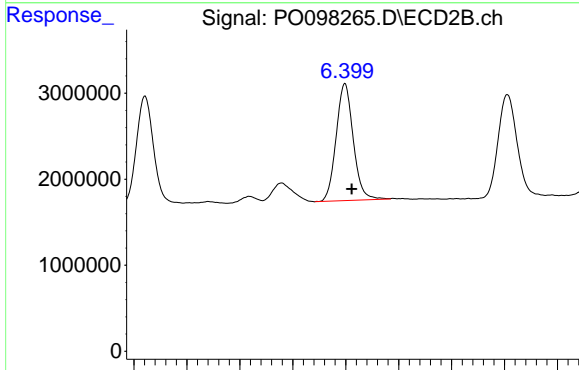
#32 AR-1260-2

R.T.: 7.525 min
 Delta R.T.: -0.002 min
 Response: 29785366
 Conc: 481.02 ng/ml

Instrument :
 ECD_O
 ClientSampleId :
 PB155832BS

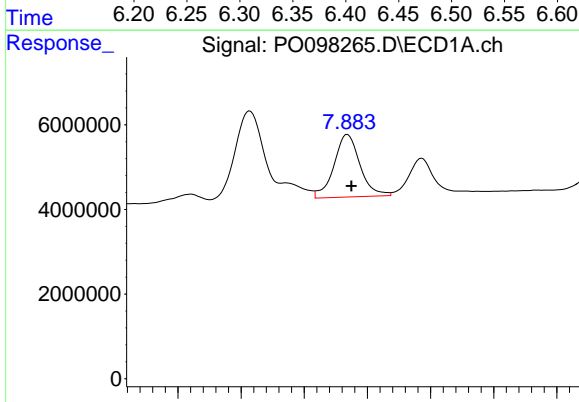
Manual Integrations
 APPROVED

Reviewed By :Yogesh Patel 09/27/2023
 Supervised By :Ankita Jodhani 09/27/2023



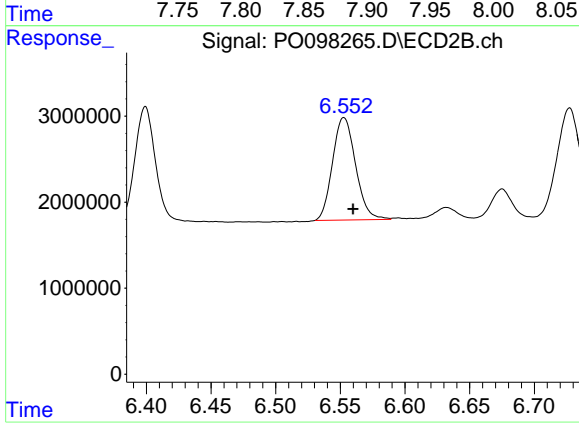
#32 AR-1260-2

R.T.: 6.399 min
 Delta R.T.: -0.006 min
 Response: 15292859
 Conc: 483.22 ng/ml



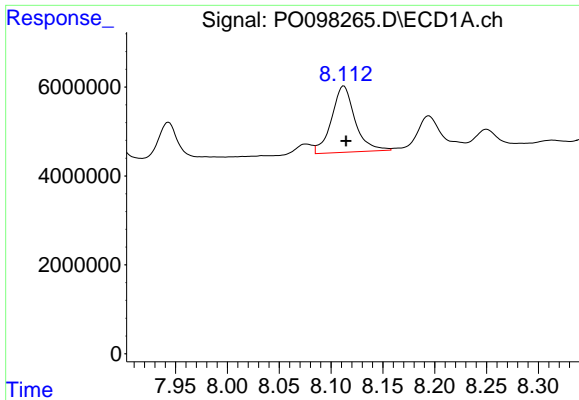
#33 AR-1260-3

R.T.: 7.884 min
 Delta R.T.: -0.003 min
 Response: 21158968
 Conc: 434.65 ng/ml



#33 AR-1260-3

R.T.: 6.553 min
 Delta R.T.: -0.007 min
 Response: 14762468
 Conc: 470.38 ng/ml



#34 AR-1260-4

R.T.: 8.112 min
 Delta R.T.: -0.002 min
 Response: 23437906
 Conc: 458.10 ng/ml

Instrument :

ECD_O

ClientSampleId :

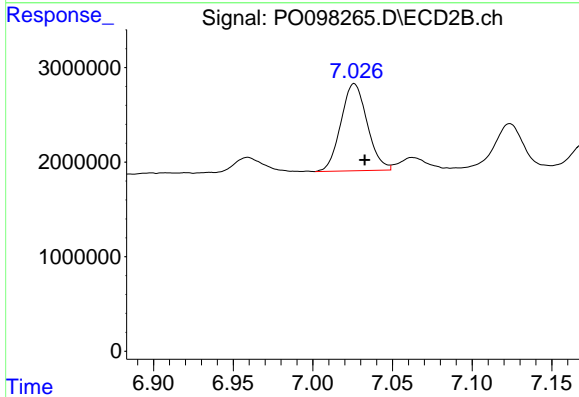
PB155832BS

Manual Integrations

APPROVED

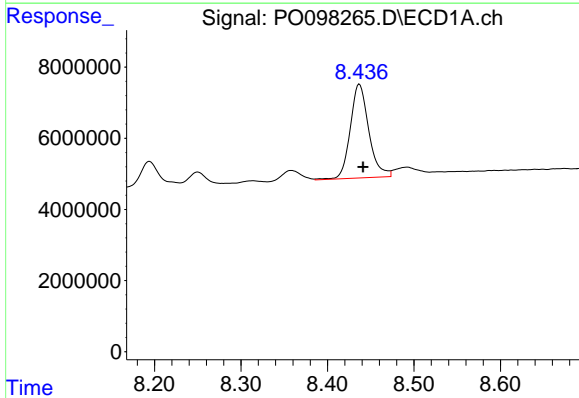
Reviewed By :Yogesh Patel 09/27/2023

Supervised By :Ankita Jodhani 09/27/2023



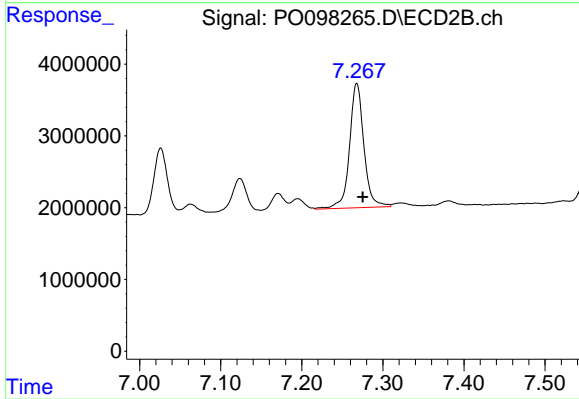
#34 AR-1260-4

R.T.: 7.026 min
 Delta R.T.: -0.007 min
 Response: 10592804
 Conc: 433.36 ng/ml



#35 AR-1260-5

R.T.: 8.437 min
 Delta R.T.: -0.004 min
 Response: 39105241
 Conc: 421.40 ng/ml



#35 AR-1260-5

R.T.: 7.268 min
 Delta R.T.: -0.007 min
 Response: 21364344
 Conc: 454.18 ng/ml