

Data Path : Z:\pestpcbsrv\HPCHEM1\ECD_0\Data\P0092623\
 Data File : P0098267.D
 Signal(s) : Signal #1: ECD1A.ch Signal #2: ECD2B.ch
 Acq On : 26 Sep 2023 14:25
 Operator : YP/AJ
 Sample : 04599-02 10X
 Misc :
 ALS Vial : 10 Sample Multiplier: 1

Instrument :
 ECD_0
ClientSampleId :
 KMA809L-1-2

Manual Integrations
APPROVED

Reviewed By :Yogesh Patel 09/27/2023
 Supervised By :Ankita Jodhani 09/27/2023

Integration File signal 1: autoint1.e
 Integration File signal 2: autoint2.e
 Quant Time: Sep 26 15:30:02 2023
 Quant Method : Z:\pestpcbsrv\HPCHEM1\ECD_0\methods\P0092523.M
 Quant Title : GC EXTRACTABLES
 QLast Update : Tue Sep 26 09:03:52 2023
 Response via : Initial Calibration
 Integrator: ChemStation

Volume Inj. : 2 µl
 Signal #1 Phase : ZB-MR1 Signal #2 Phase: ZB-MR2
 Signal #1 Info : 30Mx0.32mmx 0.50µ Signal #2 Info : 30M x 0.32mm x 0.25µm

Compound	RT#1	RT#2	Resp#1	Resp#2	ng/ml	ng/ml

System Monitoring Compounds						
1) SA Tetrachlo...	4.482	3.638	3354942	1225292	1.757	1.614m
2) SA Decachlor...	10.290	8.655	3122403	910072	3.884	2.363 #

Target Compounds

(f)=RT Delta > 1/2 Window (#)=Amounts differ by > 25% (m)=manual int.

Data Path : Z:\pestpcbsrv\HPCHEM1\ECD_0\Data\PO092623\
 Data File : PO098267.D
 Signal(s) : Signal #1: ECD1A.ch Signal #2: ECD2B.ch
 Acq On : 26 Sep 2023 14:25
 Operator : YP/AJ
 Sample : 04599-02 10X
 Misc :
 ALS Vial : 10 Sample Multiplier: 1

Instrument :

ECD_0

ClientSampleId :

KMA809L-1-2

Manual Integrations

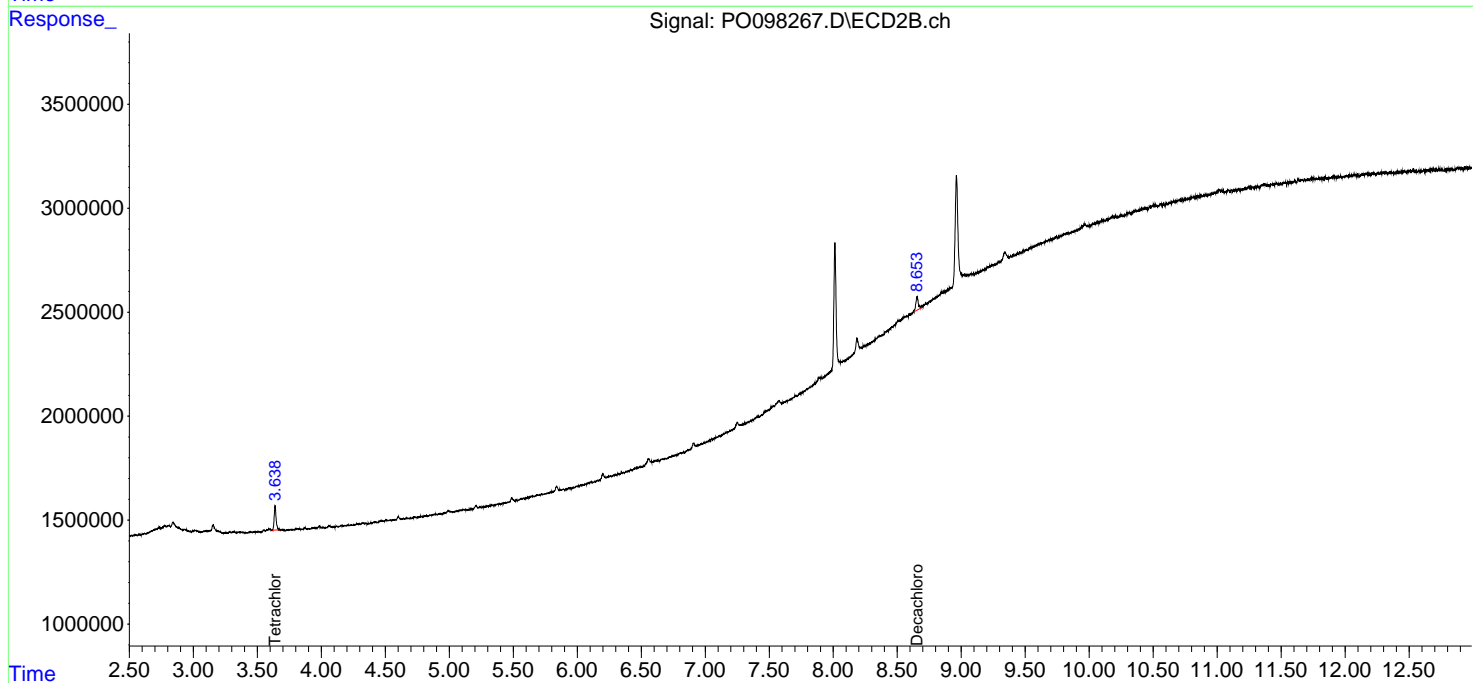
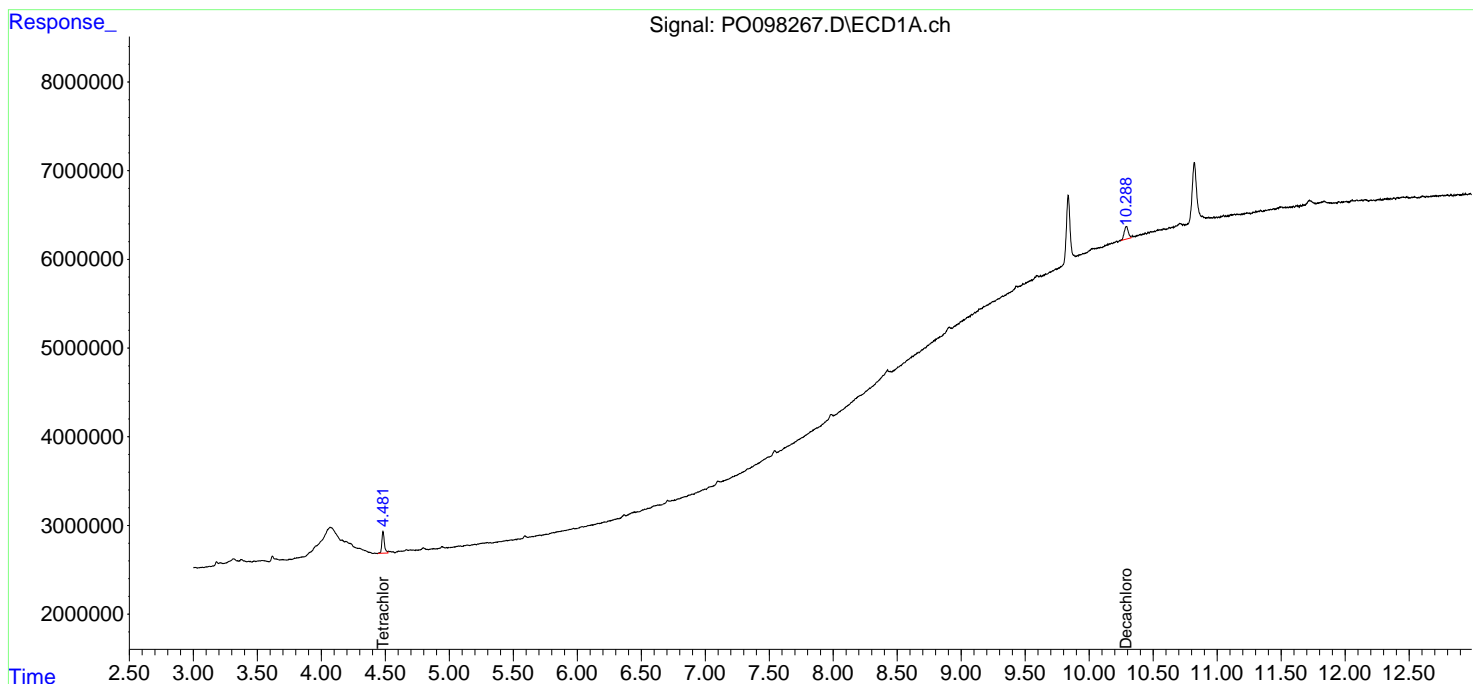
APPROVED

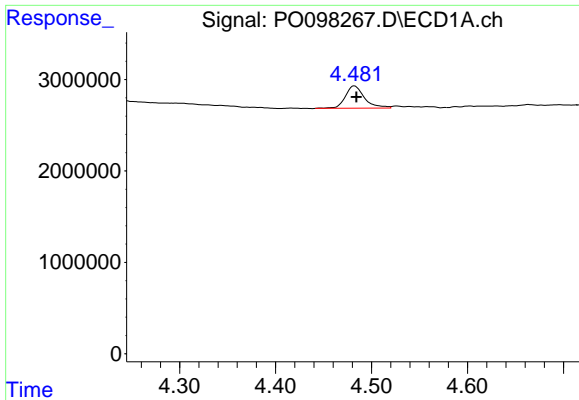
Reviewed By :Yogesh Patel 09/27/2023

Supervised By :Ankita Jodhani 09/27/2023

Integration File signal 1: autoint1.e
 Integration File signal 2: autoint2.e
 Quant Time: Sep 26 15:30:02 2023
 Quant Method : Z:\pestpcbsrv\HPCHEM1\ECD_0\methods\PO092523.M
 Quant Title : GC EXTRACTABLES
 QLast Update : Tue Sep 26 09:03:52 2023
 Response via : Initial Calibration
 Integrator: ChemStation

Volume Inj. : 2 µl
 Signal #1 Phase : ZB-MR1 Signal #2 Phase: ZB-MR2
 Signal #1 Info : 30Mx0.32mmx 0.50µ Signal #2 Info : 30M x 0.32mm x 0.25µm



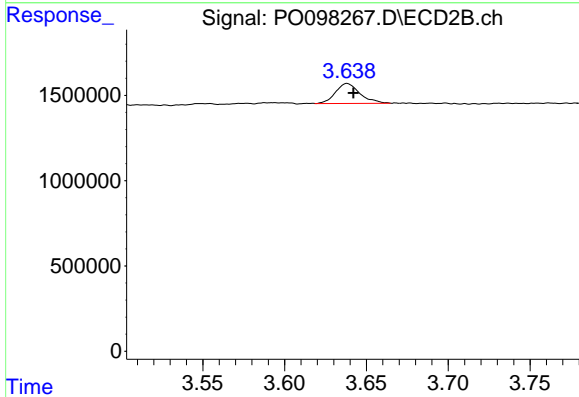


#1 Tetrachloro-m-xylene
 R.T.: 4.482 min
 Delta R.T.: -0.002 min
 Response: 3354942
 Conc: 1.76 ng/ml

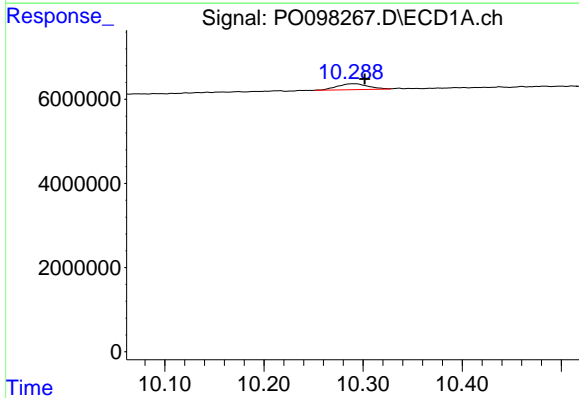
Instrument :
 ECD_O
 ClientSampleId :
 KMA809L-1-2

Manual Integrations
 APPROVED

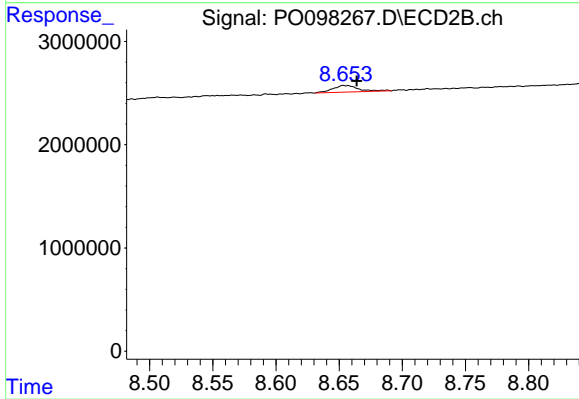
Reviewed By :Yogesh Patel 09/27/2023
 Supervised By :Ankita Jodhani 09/27/2023



#1 Tetrachloro-m-xylene
 R.T.: 3.638 min
 Delta R.T.: -0.004 min
 Response: 1225292
 Conc: 1.61 ng/ml m



#2 Decachlorobiphenyl
 R.T.: 10.290 min
 Delta R.T.: -0.012 min
 Response: 3122403
 Conc: 3.88 ng/ml



#2 Decachlorobiphenyl
 R.T.: 8.655 min
 Delta R.T.: -0.009 min
 Response: 910072
 Conc: 2.36 ng/ml