

Data Path : Z:\pestpcbsrv\HPCHEM1\ECD_0\Data\P0092623\
 Data File : P0098310.D
 Signal(s) : Signal #1: ECD1A.ch Signal #2: ECD2B.ch
 Acq On : 27 Sep 2023 03:14
 Operator : YP/AJ
 Sample : 04612-05
 Misc :
 ALS Vial : 38 Sample Multiplier: 1

Instrument :
 ECD_0
ClientSampleId :
 05-A-05-B-05-C

Manual Integrations
APPROVED

Reviewed By :Yogesh Patel 09/27/2023
 Supervised By :Ankita Jodhani 09/27/2023

Integration File signal 1: autoint1.e
 Integration File signal 2: autoint2.e
 Quant Time: Sep 27 03:38:30 2023
 Quant Method : Z:\pestpcbsrv\HPCHEM1\ECD_0\methods\P0092523.M
 Quant Title : GC EXTRACTABLES
 QLast Update : Tue Sep 26 09:03:52 2023
 Response via : Initial Calibration
 Integrator: ChemStation

Volume Inj. : 2 µl
 Signal #1 Phase : ZB-MR1 Signal #2 Phase: ZB-MR2
 Signal #1 Info : 30Mx0.32mmx 0.50µ Signal #2 Info : 30M x 0.32mm x 0.25µm

Compound	RT#1	RT#2	Resp#1	Resp#2	ng/ml	ng/ml

System Monitoring Compounds						
1) SA Tetrachlo...	4.485	3.639	40876257	15895565	21.412	20.941m
2) SA Decachlor...	10.292	8.651	27265139	11386474	33.919	29.569

Target Compounds

(f)=RT Delta > 1/2 Window (#)=Amounts differ by > 25% (m)=manual int.

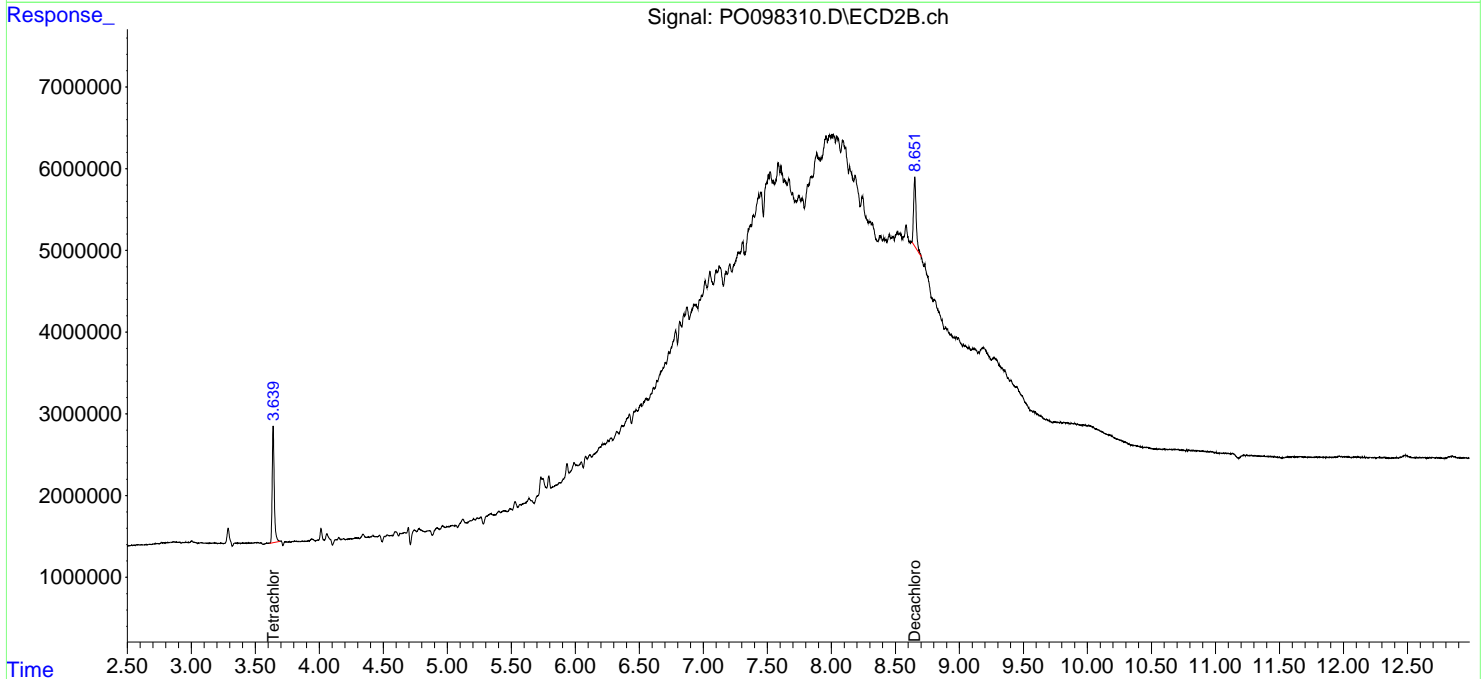
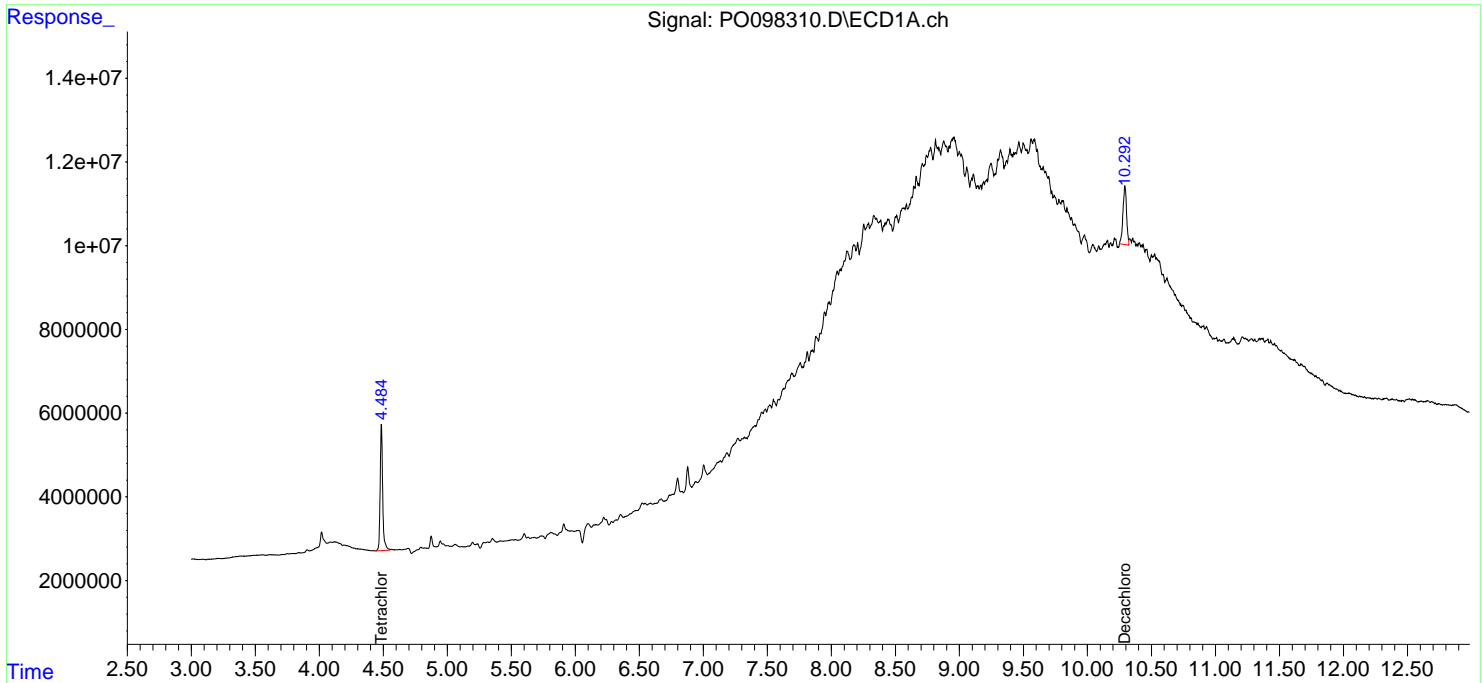
Data Path : Z:\pestpcbsrv\HPCHEM1\ECD_O\Data\PO092623\
 Data File : PO098310.D
 Signal(s) : Signal #1: ECD1A.ch Signal #2: ECD2B.ch
 Acq On : 27 Sep 2023 03:14
 Operator : YP/AJ
 Sample : 04612-05
 Misc :
 ALS Vial : 38 Sample Multiplier: 1

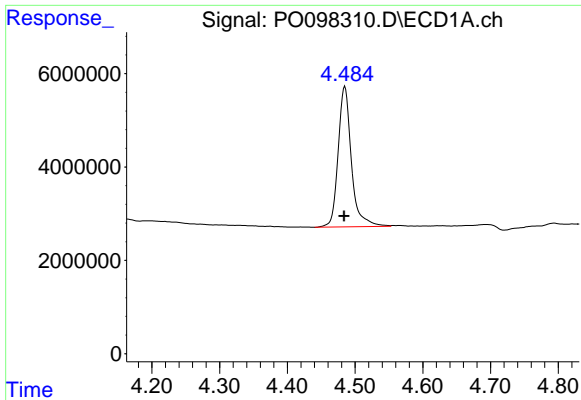
Instrument :
 ECD_O
ClientSampleId :
 05-A-05-B-05-C

Manual Integrations
APPROVED
 Reviewed By :Yogesh Patel 09/27/2023
 Supervised By :Ankita Jodhani 09/27/2023

Integration File signal 1: autoint1.e
 Integration File signal 2: autoint2.e
 Quant Time: Sep 27 03:38:30 2023
 Quant Method : Z:\pestpcbsrv\HPCHEM1\ECD_O\methods\PO092523.M
 Quant Title : GC EXTRACTABLES
 QLast Update : Tue Sep 26 09:03:52 2023
 Response via : Initial Calibration
 Integrator: ChemStation

Volume Inj. : 2 µl
 Signal #1 Phase : ZB-MR1 Signal #2 Phase: ZB-MR2
 Signal #1 Info : 30Mx0.32mmx 0.50µ Signal #2 Info : 30M x 0.32mm x 0.25µm



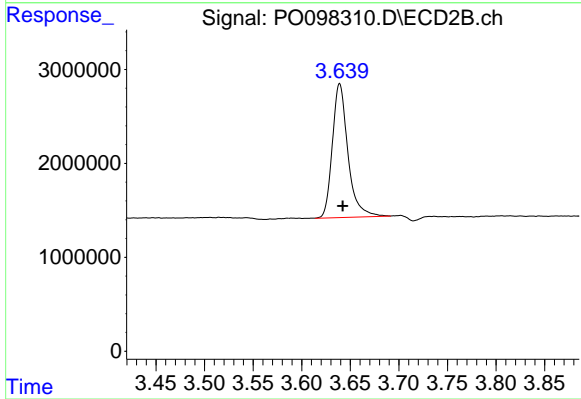


#1 Tetrachloro-m-xylene
 R.T.: 4.485 min
 Delta R.T.: 0.000 min
 Response: 40876257
 Conc: 21.41 ng/ml

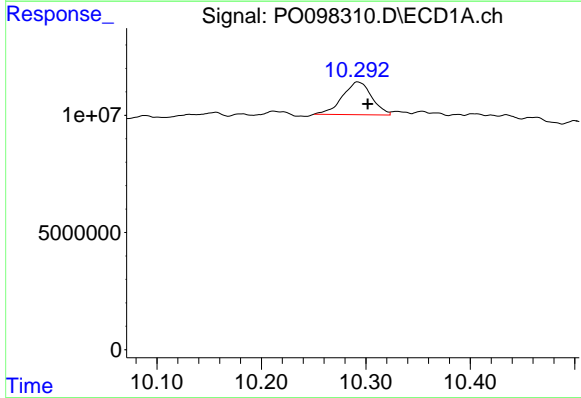
Instrument :
 ECD_O
 ClientSampleId :
 05-A-05-B-05-C

Manual Integrations
APPROVED

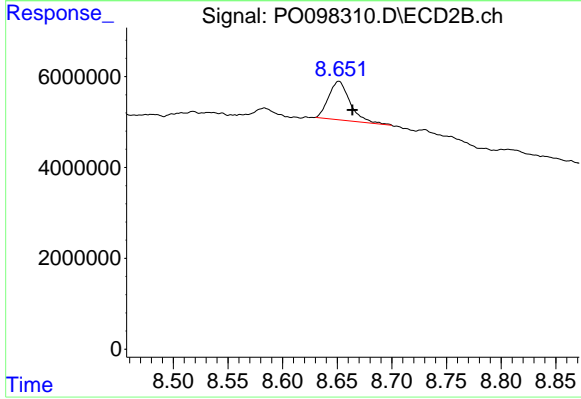
Reviewed By :Yogesh Patel 09/27/2023
 Supervised By :Ankita Jodhani 09/27/2023



#1 Tetrachloro-m-xylene
 R.T.: 3.639 min
 Delta R.T.: -0.003 min
 Response: 15895565
 Conc: 20.94 ng/ml m



#2 Decachlorobiphenyl
 R.T.: 10.292 min
 Delta R.T.: -0.009 min
 Response: 27265139
 Conc: 33.92 ng/ml



#2 Decachlorobiphenyl
 R.T.: 8.651 min
 Delta R.T.: -0.013 min
 Response: 11386474
 Conc: 29.57 ng/ml