

Data Path : Z:\pestpcbsrv\HPCHEM1\ECD_0\Data\P0092719\
 Data File : P0061438.D
 Signal(s) : Signal #1: ECD1A.CH Signal #2: ECD2B.CH
 Acq On : 27 Sep 2019 19:40
 Operator : HP/AJ
 Sample : K5037-01
 Misc :
 ALS Vial : 14 Sample Multiplier: 1

Instrument :
 ECD_O
 ClientSampled :
 40241

Integration File signal 1: autoint1.e
 Integration File signal 2: autoint2.e
 Quant Time: Sep 27 23:57:11 2019
 Quant Method : Z:\pestpcbsrv\HPCHEM1\ECD_0\methods\P0091319.M
 Quant Title : GC EXTRACTABLES
 QLast Update : Sat Sep 14 00:06:36 2019
 Response via : Initial Calibration
 Integrator: ChemStation 6890 Scale Mode: Small noise peaks clipped

Volume Inj. : 2 µl
 Signal #1 Phase : ZB-MR1 Signal #2 Phase: ZB-MR2
 Signal #1 Info : 30Mx0.32mmx 0.50µ Signal #2 Info : 30M x 0.32mm x 0.25µm

Compound	RT#1	RT#2	Resp#1	Resp#2	ng/ml	ng/ml
System Monitoring Compounds						
1) SA Tetrachlo...	4.370	3.530	872917	658423	23.726	23.581
2) SA Decachlor...	10.032	8.399	767287	532763	16.700	15.199
Target Compounds						
3) L1 AR-1016-1	5.524	4.590	26314	79544	16.465	64.343 #
4) L1 AR-1016-2	5.588	4.617	95431	84431	41.685	49.626
5) L1 AR-1016-3	5.636	4.789	35034	9648	24.404	9.952 #
6) L1 AR-1016-4	5.721	4.829	28088	32646	23.812	39.884 #
7) L1 AR-1016-5	6.014	5.056	22233	60364	17.736	57.634 #
8) L2 AR-1221-1	4.582	3.741	182934	21207	416.784	59.909 #
9) L2 AR-1221-2	4.676	3.818	49634	44220	145.317	157.345
10) L2 AR-1221-3	4.764	3.898	43128	9222	40.718	11.109 #
11) L3 AR-1232-1	4.764	3.898	43128	9222	36.964	10.119 #
12) L3 AR-1232-2	5.244	4.617	20790	84431	32.063	83.623 #
13) L3 AR-1232-3	5.524	4.789	26314	9648	19.647	17.192
14) L3 AR-1232-4	5.721	4.873	28088	17168	40.876	32.876
15) L3 AR-1232-5	5.808	5.056	30186	60364	55.126	106.662 #
16) L4 AR-1242-1	5.524	4.590	26314	79544	22.049	87.374 #
17) L4 AR-1242-2	5.588	4.617	95431	84431	55.837	67.445
18) L4 AR-1242-3	5.636	4.789	35034	9648	32.352	13.502 #
19) L4 AR-1242-4	5.721	4.873	28088	17168	31.816	23.575 #
20) L4 AR-1242-5	6.403	5.374	216577	49515	193.254	50.020 #
21) L5 AR-1248-1	5.524	4.590	26314	79544	28.583	112.148 #
22) L5 AR-1248-2	5.808	4.829	30186	32646	22.574	33.788 #
23) L5 AR-1248-3	6.014	4.873	22233	17168	14.691	17.047
24) L5 AR-1248-4	6.403	5.056	216577	60364	118.876	50.264 #
25) L5 AR-1248-5	6.403	5.437	216577	22438	123.787	17.749 #
26) L6 AR-1254-1	6.403	5.374	216577	49515	112.411	24.026 #
27) L6 AR-1254-2	6.587	5.508	163256	24298	51.878	12.876 #
28) L6 AR-1254-3	6.946	5.930	740280	63743	210.189	20.048 #
29) L6 AR-1254-4	7.251	6.123	165854	8402	61.267	4.036 #
30) L6 AR-1254-5	7.665	6.532	190413	31606	64.573	9.986 #
31) L7 AR-1260-1	7.152	6.026	397942	7688	163.452	3.655 #
32) L7 AR-1260-2	7.403	6.211	154587	22719	51.131	8.808 #
33) L7 AR-1260-3	7.744	6.376	115033	47279	48.203	19.634 #
34) L7 AR-1260-4	7.975	6.869	113460	11175	40.555	5.221 #
35) L7 AR-1260-5	8.318	7.032	506024	12416	92.928	2.569 #
36) L8 AR-1262-1	7.744	6.532	115033	31606	32.566	10.582 #
37) L8 AR-1262-2	8.318	7.032	506024	12416	81.166	2.388 #
38) L8 AR-1262-3	8.630	7.346	208933	3056	49.035	1.440 #
39) L8 AR-1262-4	8.630	7.428	208933	22970	64.082	6.014 #
40) L8 AR-1262-5	0.000	7.926	0	15623	N.D.	9.334 #
41) L9 AR-1268-1	8.630	7.346	208933	3056	28.309	0.521 #

Data Path : Z:\pestpcbsrv\HPCHEM1\ECD_0\Data\P0092719\
 Data File : P0061438.D
 Signal(s) : Signal #1: ECD1A.CH Signal #2: ECD2B.CH
 Acq On : 27 Sep 2019 19:40
 Operator : HP/AJ
 Sample : K5037-01
 Misc :
 ALS Vial : 14 Sample Multiplier: 1

Instrument :
 ECD_0
 ClientSampleId :
 40241

Integration File signal 1: autoint1.e
 Integration File signal 2: autoint2.e
 Quant Time: Sep 27 23:57:11 2019
 Quant Method : Z:\pestpcbsrv\HPCHEM1\ECD_0\methods\P0091319.M
 Quant Title : GC EXTRACTABLES
 QLast Update : Sat Sep 14 00:06:36 2019
 Response via : Initial Calibration
 Integrator: ChemStation 6890 Scale Mode: Small noise peaks clipped

Volume Inj. : 2 µl
 Signal #1 Phase : ZB-MR1 Signal #2 Phase: ZB-MR2
 Signal #1 Info : 30Mx0.32mmx 0.50µ Signal #2 Info : 30M x 0.32mm x 0.25µm

	Compound	RT#1	RT#2	Resp#1	Resp#2	ng/ml	ng/ml
42)	L9 AR-1268-2	8.630	7.428	208933	22970	30.930	4.310 #
43)	L9 AR-1268-3	0.000	7.615	0	113595	N.D.	25.627 #
44)	L9 AR-1268-4	0.000	7.926	0	15623	N.D.	8.176 #
45)	L9 AR-1268-5	9.693	8.163	211540	28720	13.337	2.387 #

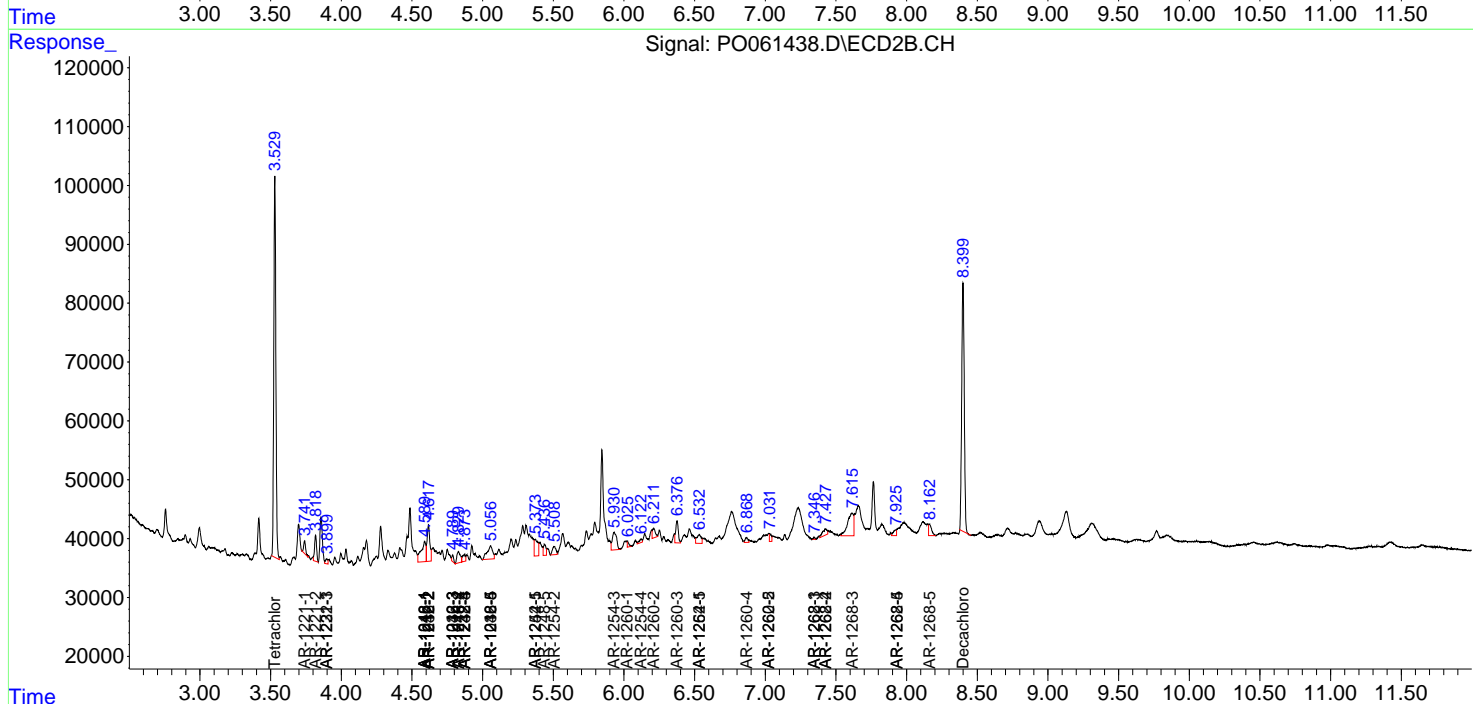
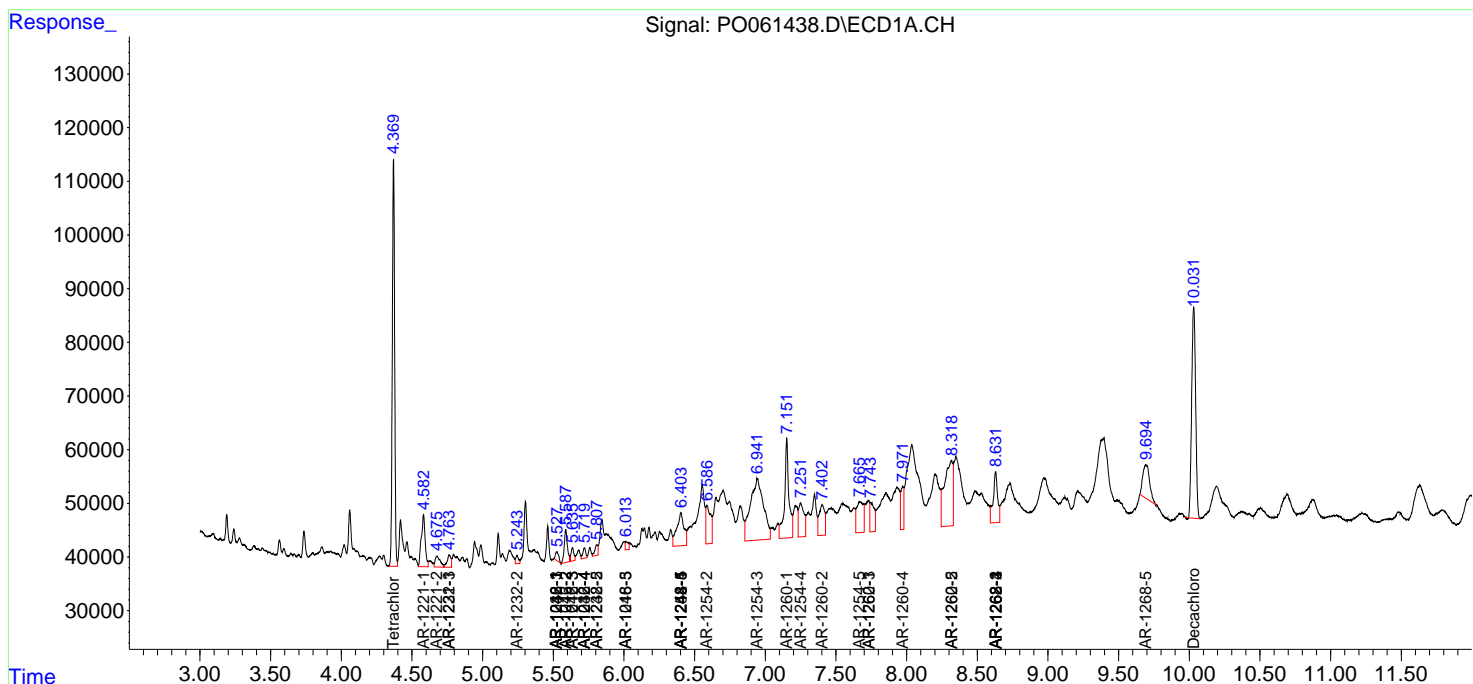
(f)=RT Delta > 1/2 Window (#)=Amounts differ by > 25% (m)=manual int.

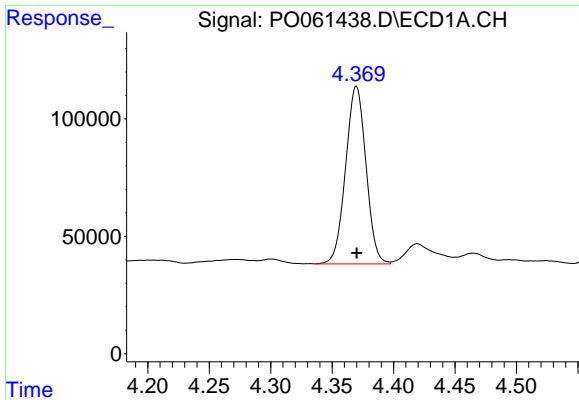
Data Path : Z:\pestpcbsrv\HPCHEM1\ECD_0\Data\P0092719\
 Data File : P0061438.D
 Signal(s) : Signal #1: ECD1A.CH Signal #2: ECD2B.CH
 Acq On : 27 Sep 2019 19:40
 Operator : HP/AJ
 Sample : K5037-01
 Misc :
 ALS Vial : 14 Sample Multiplier: 1

Instrument :
 ECD_O
 ClientSampled :
 40241

Integration File signal 1: autoint1.e
 Integration File signal 2: autoint2.e
 Quant Time: Sep 27 23:57:11 2019
 Quant Method : Z:\pestpcbsrv\HPCHEM1\ECD_0\methods\P0091319.M
 Quant Title : GC EXTRACTABLES
 QLast Update : Sat Sep 14 00:06:36 2019
 Response via : Initial Calibration
 Integrator: ChemStation 6890 Scale Mode: Small noise peaks clipped

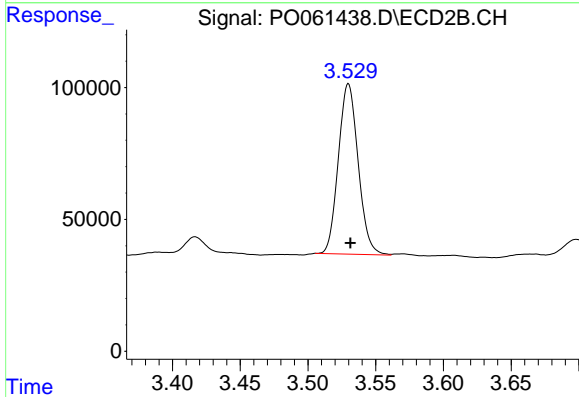
Volume Inj. : 2 µl
 Signal #1 Phase : ZB-MR1 Signal #2 Phase: ZB-MR2
 Signal #1 Info : 30Mx0.32mmx 0.50µ Signal #2 Info : 30M x 0.32mm x 0.25µm



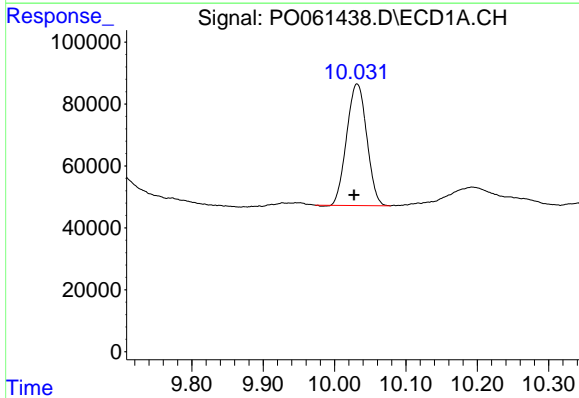


#1 Tetrachloro-m-xylene
 R.T.: 4.370 min
 Delta R.T.: 0.000 min
 Response: 872917
 Conc: 23.73 ng/ml

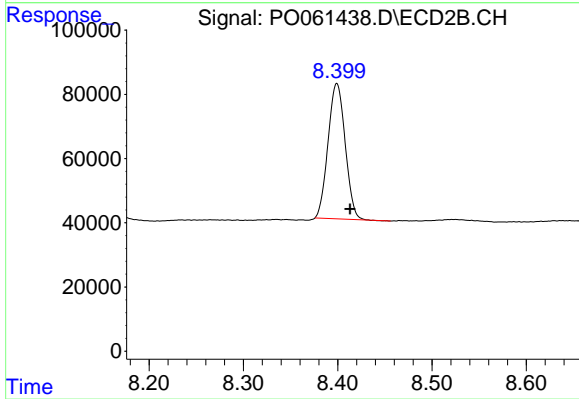
Instrument :
 ECD_O
 ClientSampled :
 40241



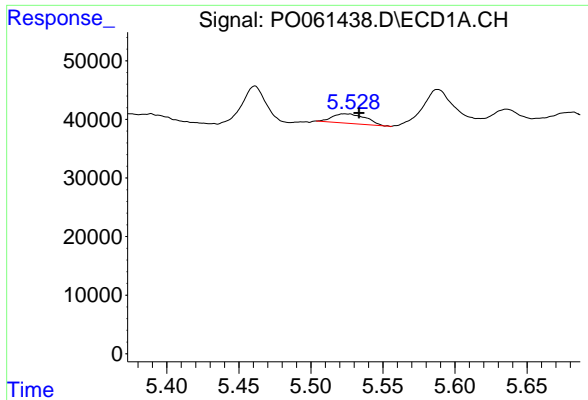
#1 Tetrachloro-m-xylene
 R.T.: 3.530 min
 Delta R.T.: -0.001 min
 Response: 658423
 Conc: 23.58 ng/ml



#2 Decachlorobiphenyl
 R.T.: 10.032 min
 Delta R.T.: 0.004 min
 Response: 767287
 Conc: 16.70 ng/ml

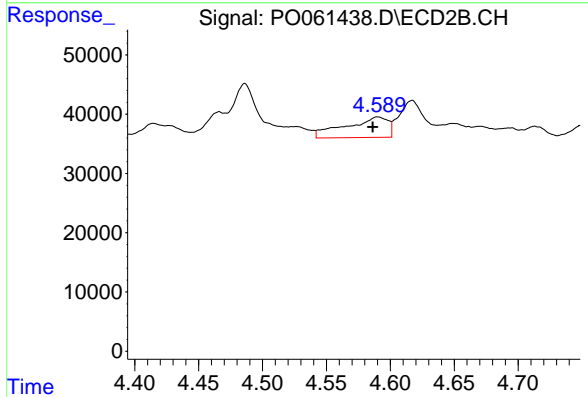


#2 Decachlorobiphenyl
 R.T.: 8.399 min
 Delta R.T.: -0.014 min
 Response: 532763
 Conc: 15.20 ng/ml

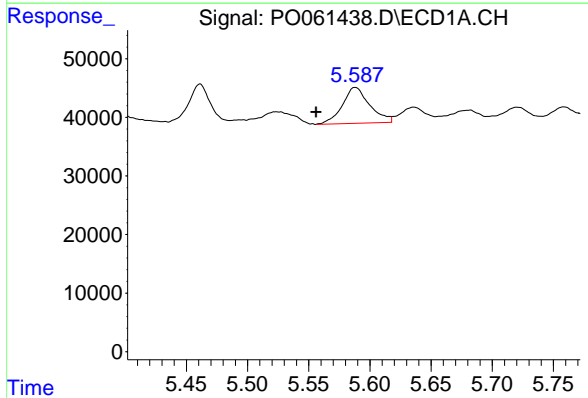


#3 AR-1016-1
 R.T.: 5.524 min
 Delta R.T.: -0.010 min
 Response: 26314
 Conc: 16.47 ng/ml

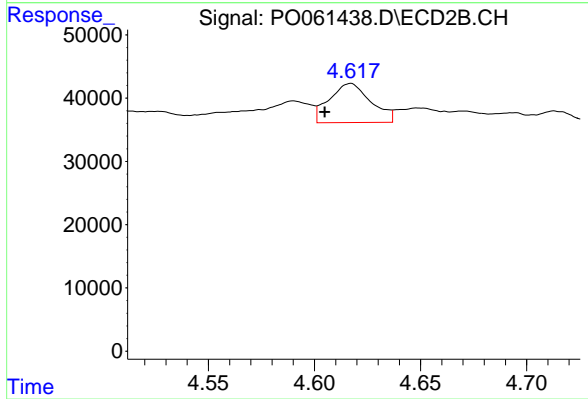
Instrument :
 ECD_O
 ClientSampleId :
 40241



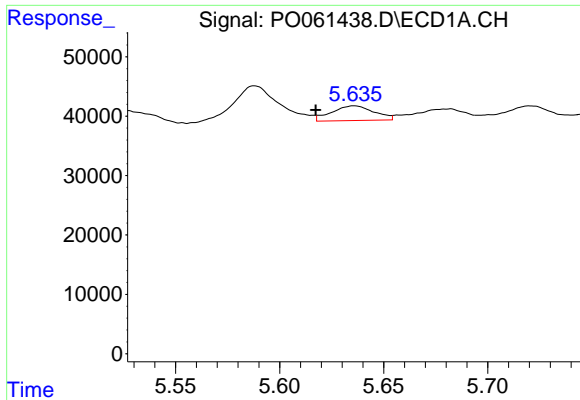
#3 AR-1016-1
 R.T.: 4.590 min
 Delta R.T.: 0.004 min
 Response: 79544
 Conc: 64.34 ng/ml



#4 AR-1016-2
 R.T.: 5.588 min
 Delta R.T.: 0.032 min
 Response: 95431
 Conc: 41.68 ng/ml



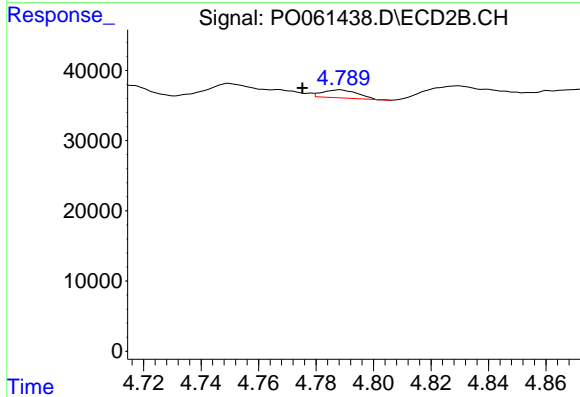
#4 AR-1016-2
 R.T.: 4.617 min
 Delta R.T.: 0.013 min
 Response: 84431
 Conc: 49.63 ng/ml



#5 AR-1016-3

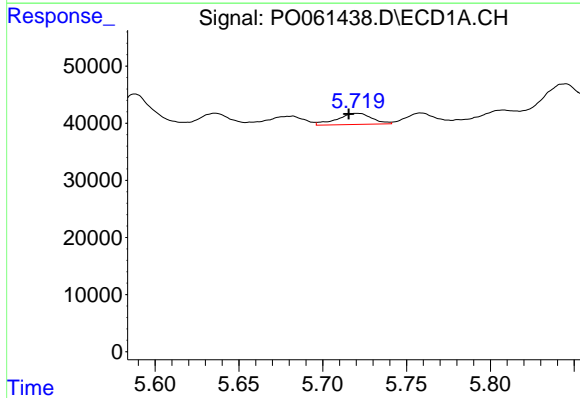
R.T.: 5.636 min
 Delta R.T.: 0.019 min
 Response: 35034
 Conc: 24.40 ng/ml

Instrument :
 ECD_O
 ClientSampleId :
 40241



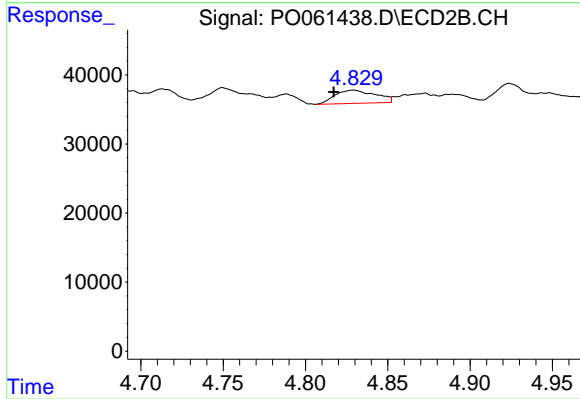
#5 AR-1016-3

R.T.: 4.789 min
 Delta R.T.: 0.013 min
 Response: 9648
 Conc: 9.95 ng/ml



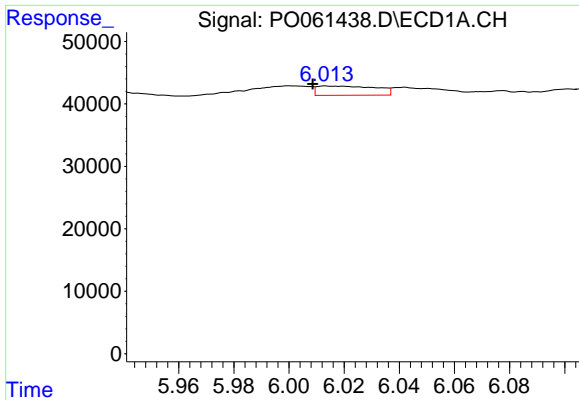
#6 AR-1016-4

R.T.: 5.721 min
 Delta R.T.: 0.005 min
 Response: 28088
 Conc: 23.81 ng/ml



#6 AR-1016-4

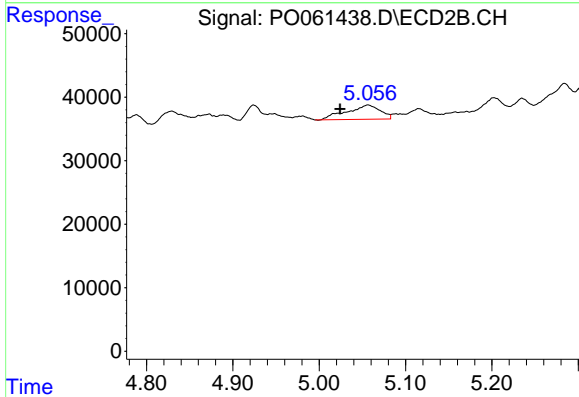
R.T.: 4.829 min
 Delta R.T.: 0.012 min
 Response: 32646
 Conc: 39.88 ng/ml



#7 AR-1016-5

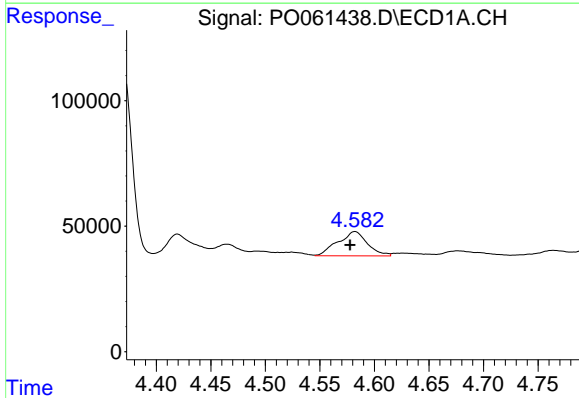
R.T.: 6.014 min
 Delta R.T.: 0.005 min
 Response: 22233
 Conc: 17.74 ng/ml

Instrument :
 ECD_O
 ClientSampleId :
 40241



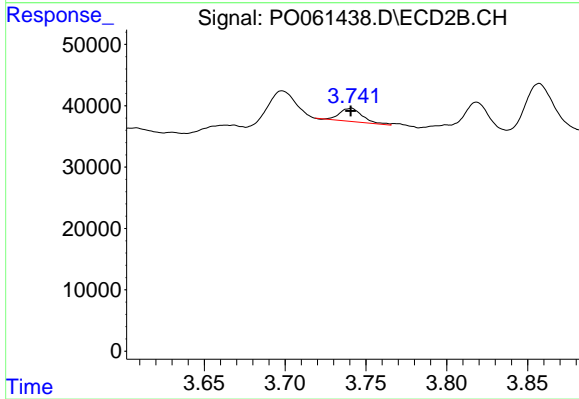
#7 AR-1016-5

R.T.: 5.056 min
 Delta R.T.: 0.032 min
 Response: 60364
 Conc: 57.63 ng/ml



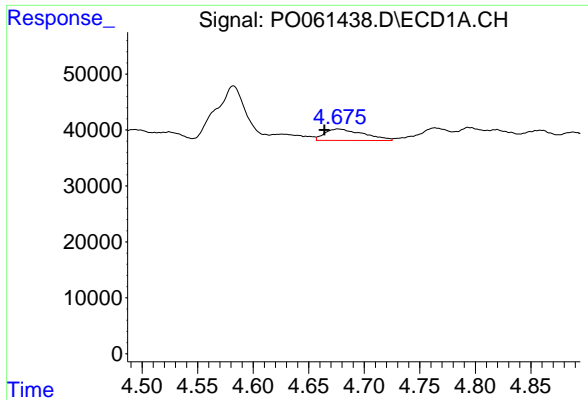
#8 AR-1221-1

R.T.: 4.582 min
 Delta R.T.: 0.004 min
 Response: 182934
 Conc: 416.78 ng/ml



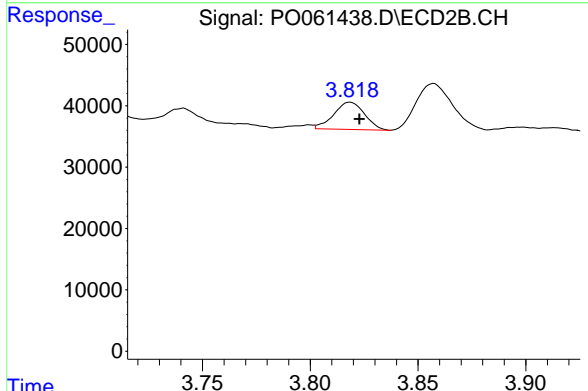
#8 AR-1221-1

R.T.: 3.741 min
 Delta R.T.: 0.000 min
 Response: 21207
 Conc: 59.91 ng/ml

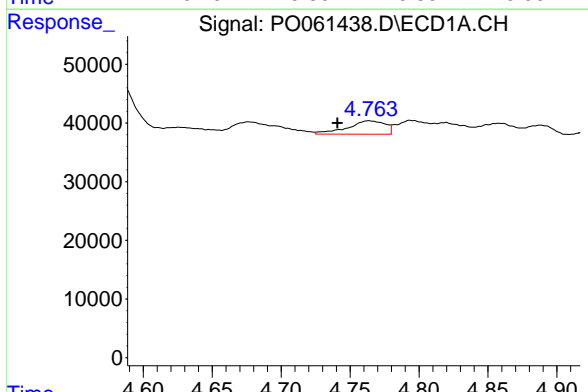


#9 AR-1221-2
 R.T.: 4.676 min
 Delta R.T.: 0.012 min
 Response: 49634
 Conc: 145.32 ng/ml

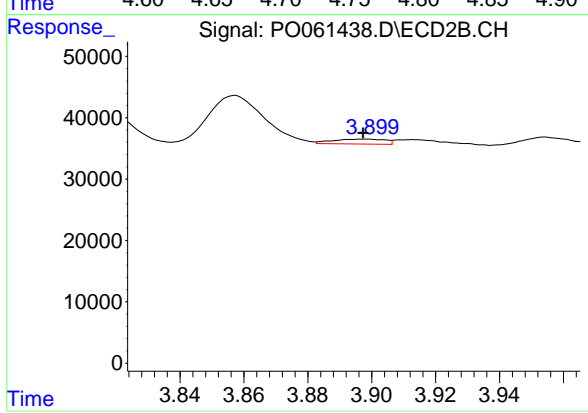
Instrument :
 ECD_O
 ClientSampled :
 40241



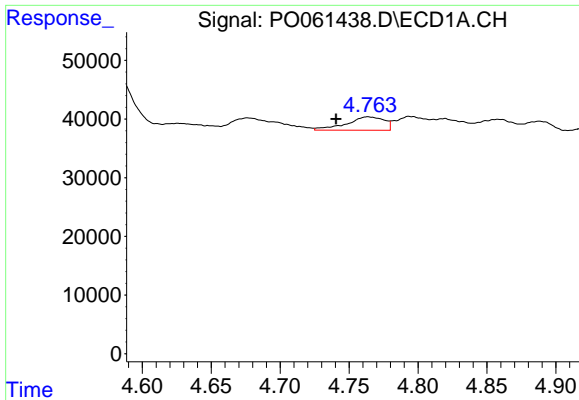
#9 AR-1221-2
 R.T.: 3.818 min
 Delta R.T.: -0.004 min
 Response: 44220
 Conc: 157.34 ng/ml



#10 AR-1221-3
 R.T.: 4.764 min
 Delta R.T.: 0.023 min
 Response: 43128
 Conc: 40.72 ng/ml



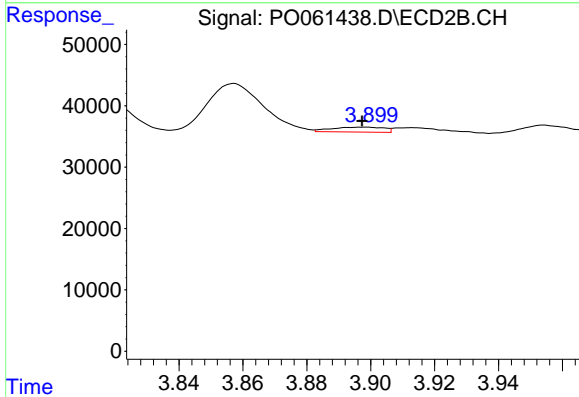
#10 AR-1221-3
 R.T.: 3.898 min
 Delta R.T.: 0.001 min
 Response: 9222
 Conc: 11.11 ng/ml



#11 AR-1232-1

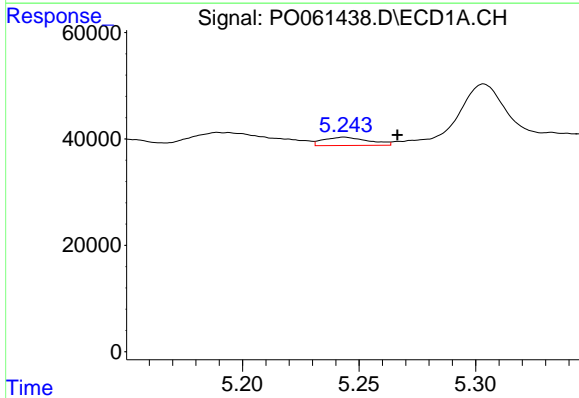
R.T.: 4.764 min
 Delta R.T.: 0.023 min
 Response: 43128
 Conc: 36.96 ng/ml

Instrument :
 ECD_O
 ClientSampleId :
 40241



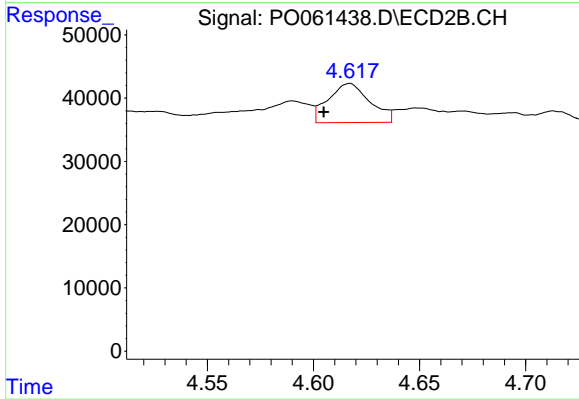
#11 AR-1232-1

R.T.: 3.898 min
 Delta R.T.: 0.000 min
 Response: 9222
 Conc: 10.12 ng/ml



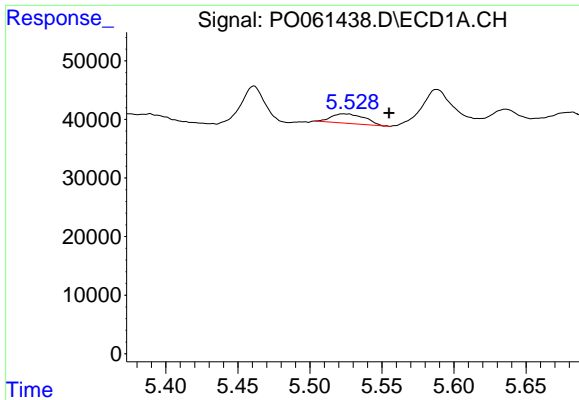
#12 AR-1232-2

R.T.: 5.244 min
 Delta R.T.: -0.023 min
 Response: 20790
 Conc: 32.06 ng/ml



#12 AR-1232-2

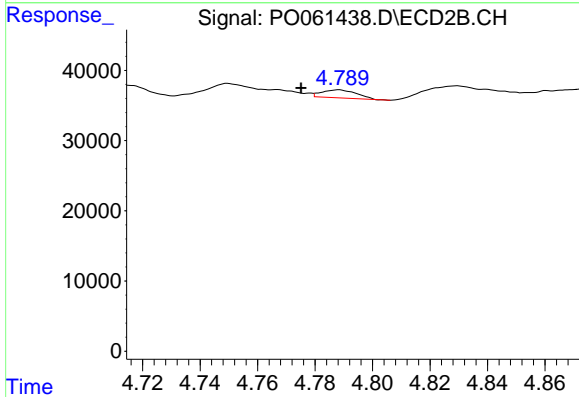
R.T.: 4.617 min
 Delta R.T.: 0.013 min
 Response: 84431
 Conc: 83.62 ng/ml



#13 AR-1232-3

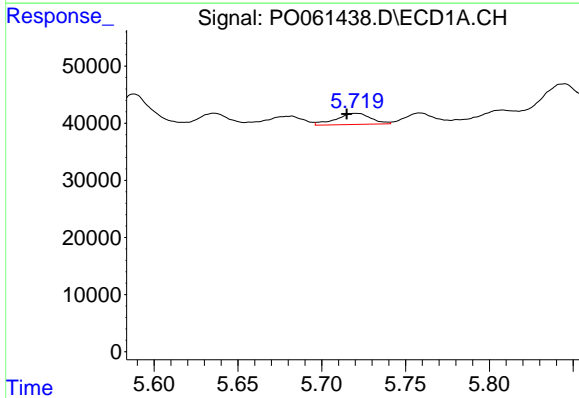
R.T.: 5.524 min
 Delta R.T.: -0.032 min
 Response: 26314
 Conc: 19.65 ng/ml

Instrument :
 ECD_O
 ClientSampleId :
 40241



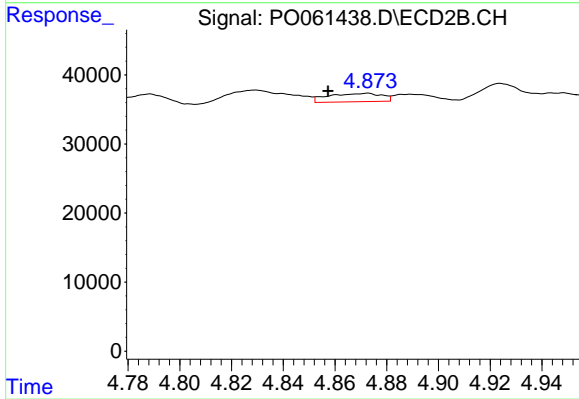
#13 AR-1232-3

R.T.: 4.789 min
 Delta R.T.: 0.013 min
 Response: 9648
 Conc: 17.19 ng/ml



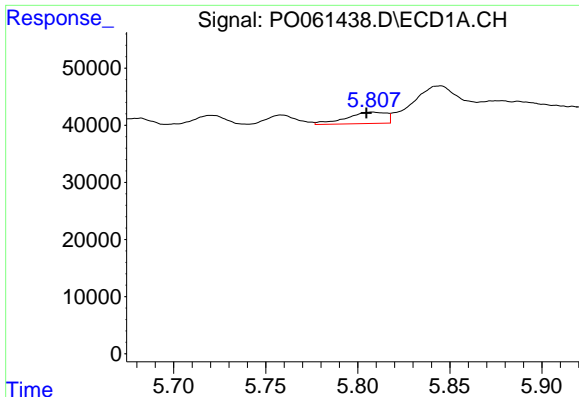
#14 AR-1232-4

R.T.: 5.721 min
 Delta R.T.: 0.006 min
 Response: 28088
 Conc: 40.88 ng/ml



#14 AR-1232-4

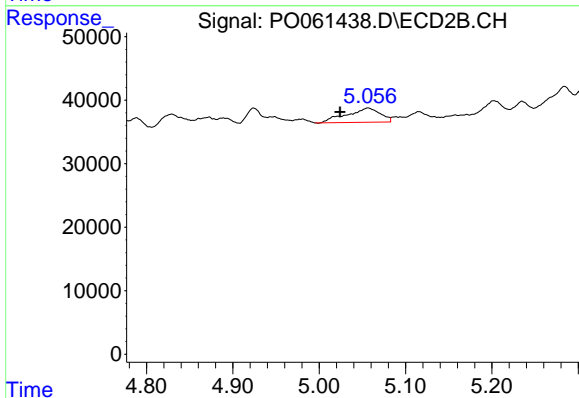
R.T.: 4.873 min
 Delta R.T.: 0.016 min
 Response: 17168
 Conc: 32.88 ng/ml



#15 AR-1232-5

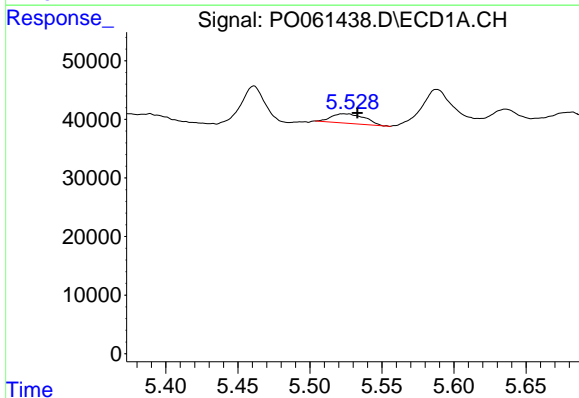
R.T.: 5.808 min
 Delta R.T.: 0.003 min
 Response: 30186
 Conc: 55.13 ng/ml

Instrument :
 ECD_O
 ClientSampleId :
 40241



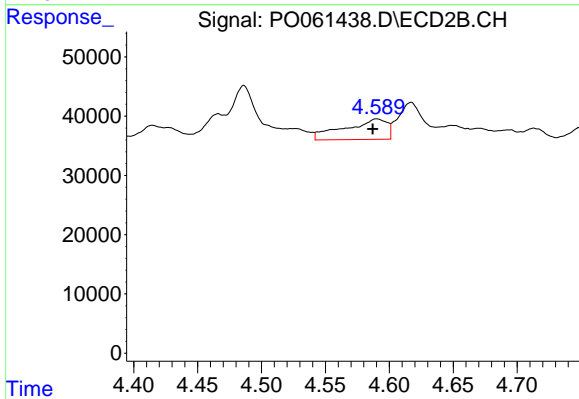
#15 AR-1232-5

R.T.: 5.056 min
 Delta R.T.: 0.032 min
 Response: 60364
 Conc: 106.66 ng/ml



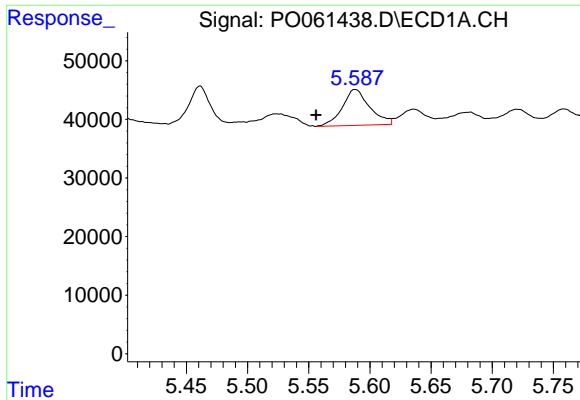
#16 AR-1242-1

R.T.: 5.524 min
 Delta R.T.: -0.009 min
 Response: 26314
 Conc: 22.05 ng/ml



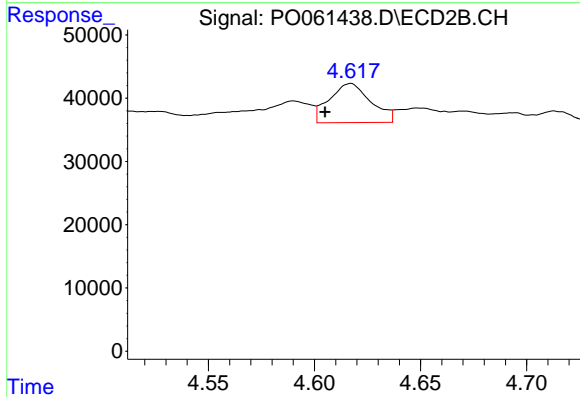
#16 AR-1242-1

R.T.: 4.590 min
 Delta R.T.: 0.003 min
 Response: 79544
 Conc: 87.37 ng/ml

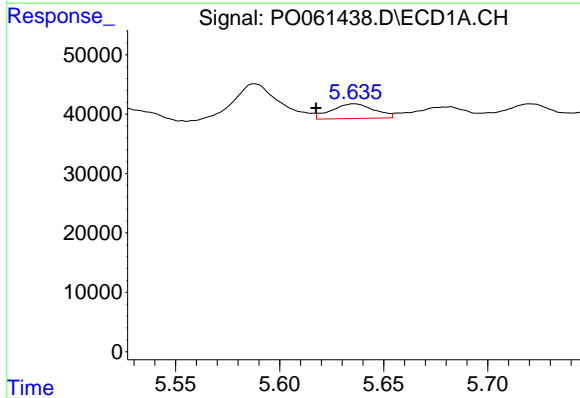


#17 AR-1242-2
 R.T.: 5.588 min
 Delta R.T.: 0.032 min
 Response: 95431
 Conc: 55.84 ng/ml

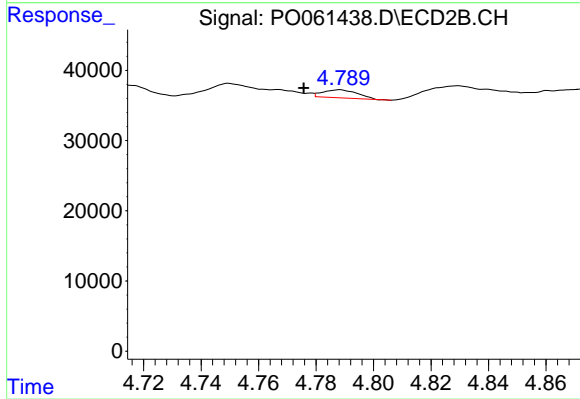
Instrument :
 ECD_O
 ClientSampleId :
 40241



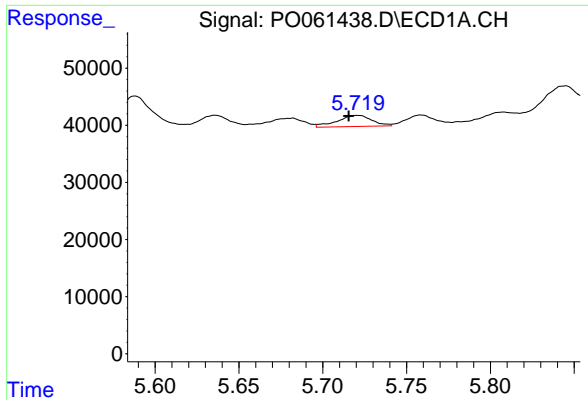
#17 AR-1242-2
 R.T.: 4.617 min
 Delta R.T.: 0.012 min
 Response: 84431
 Conc: 67.44 ng/ml



#18 AR-1242-3
 R.T.: 5.636 min
 Delta R.T.: 0.018 min
 Response: 35034
 Conc: 32.35 ng/ml

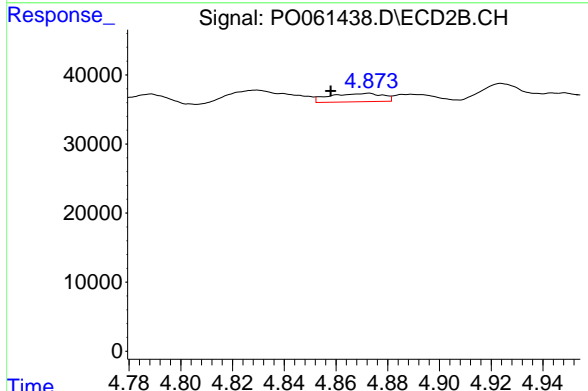


#18 AR-1242-3
 R.T.: 4.789 min
 Delta R.T.: 0.013 min
 Response: 9648
 Conc: 13.50 ng/ml

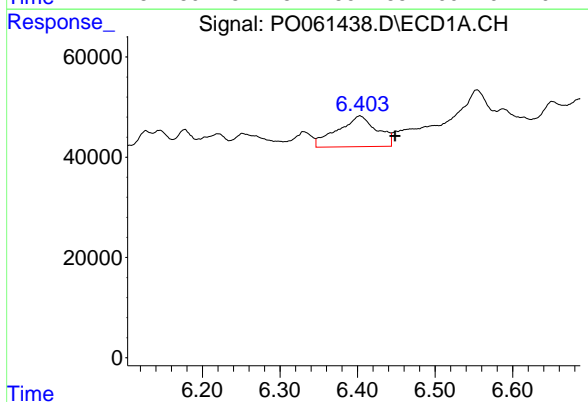


#19 AR-1242-4
 R.T.: 5.721 min
 Delta R.T.: 0.005 min
 Response: 28088
 Conc: 31.82 ng/ml

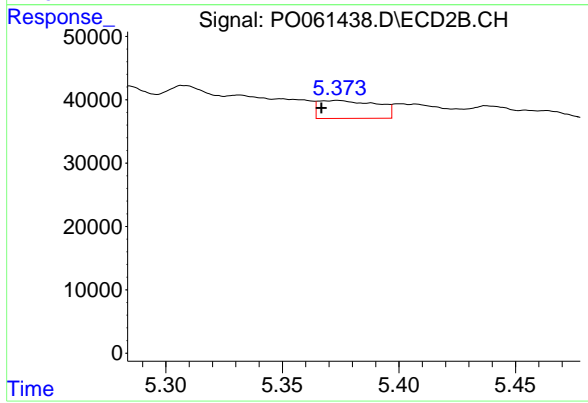
Instrument :
 ECD_O
 ClientSampleId :
 40241



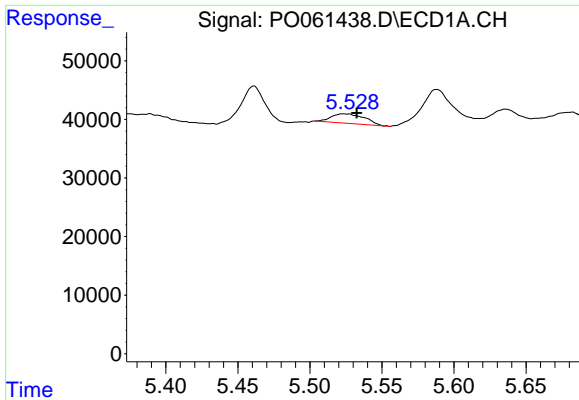
#19 AR-1242-4
 R.T.: 4.873 min
 Delta R.T.: 0.015 min
 Response: 17168
 Conc: 23.58 ng/ml



#20 AR-1242-5
 R.T.: 6.403 min
 Delta R.T.: -0.045 min
 Response: 216577
 Conc: 193.25 ng/ml



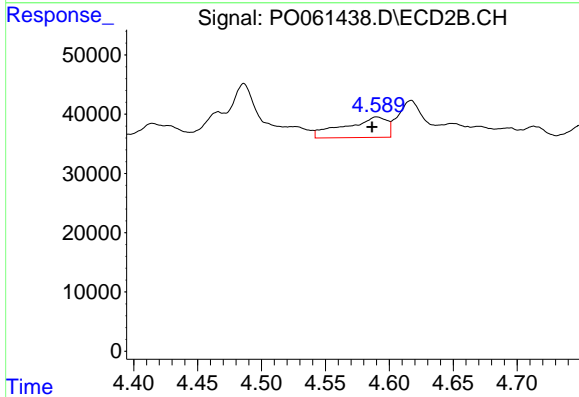
#20 AR-1242-5
 R.T.: 5.374 min
 Delta R.T.: 0.007 min
 Response: 49515
 Conc: 50.02 ng/ml



#21 AR-1248-1

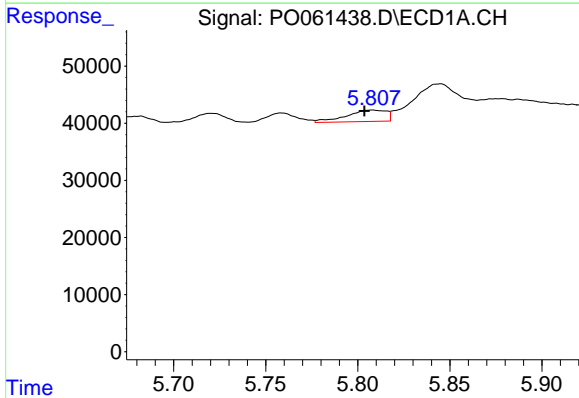
R.T.: 5.524 min
 Delta R.T.: -0.009 min
 Response: 26314
 Conc: 28.58 ng/ml

Instrument :
 ECD_O
 ClientSampleId :
 40241



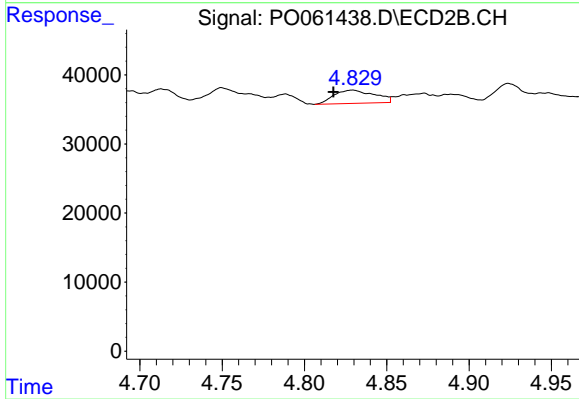
#21 AR-1248-1

R.T.: 4.590 min
 Delta R.T.: 0.004 min
 Response: 79544
 Conc: 112.15 ng/ml



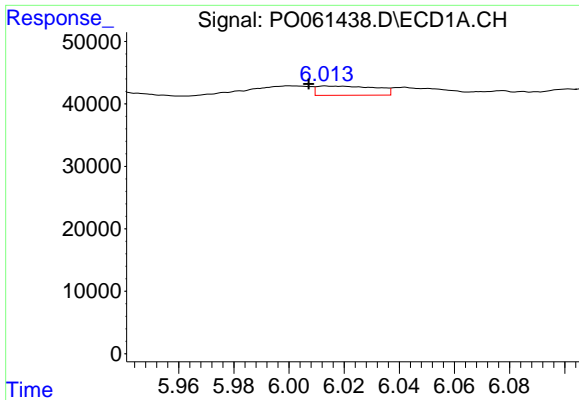
#22 AR-1248-2

R.T.: 5.808 min
 Delta R.T.: 0.004 min
 Response: 30186
 Conc: 22.57 ng/ml



#22 AR-1248-2

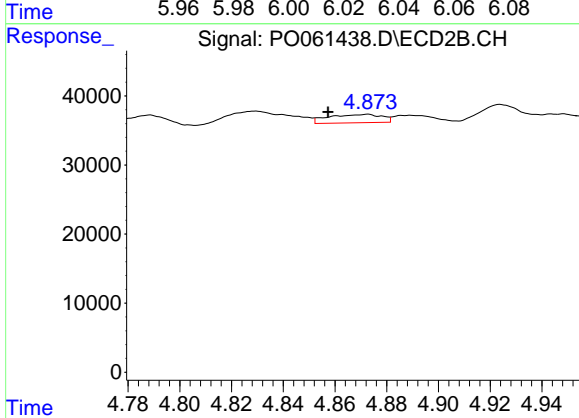
R.T.: 4.829 min
 Delta R.T.: 0.012 min
 Response: 32646
 Conc: 33.79 ng/ml



#23 AR-1248-3

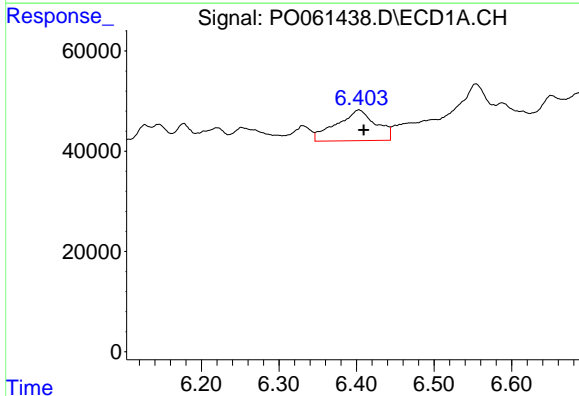
R.T.: 6.014 min
 Delta R.T.: 0.006 min
 Response: 22233
 Conc: 14.69 ng/ml

Instrument :
 ECD_O
 ClientSampleId :
 40241



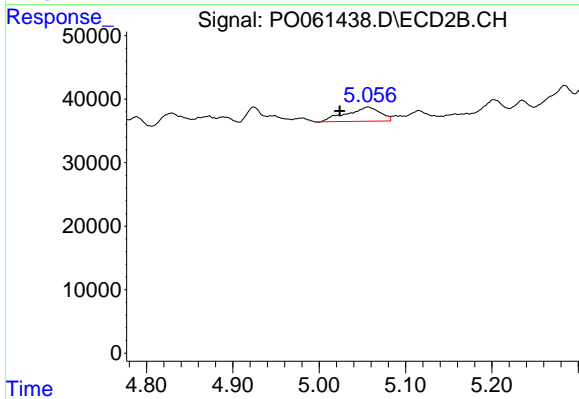
#23 AR-1248-3

R.T.: 4.873 min
 Delta R.T.: 0.016 min
 Response: 17168
 Conc: 17.05 ng/ml



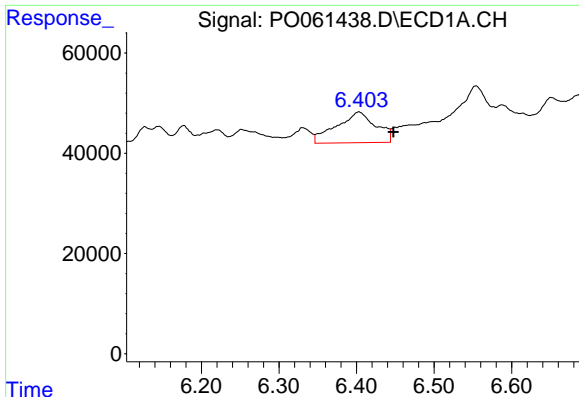
#24 AR-1248-4

R.T.: 6.403 min
 Delta R.T.: -0.006 min
 Response: 216577
 Conc: 118.88 ng/ml



#24 AR-1248-4

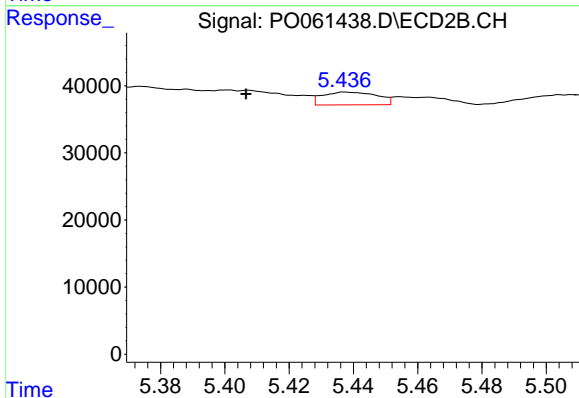
R.T.: 5.056 min
 Delta R.T.: 0.033 min
 Response: 60364
 Conc: 50.26 ng/ml



#25 AR-1248-5

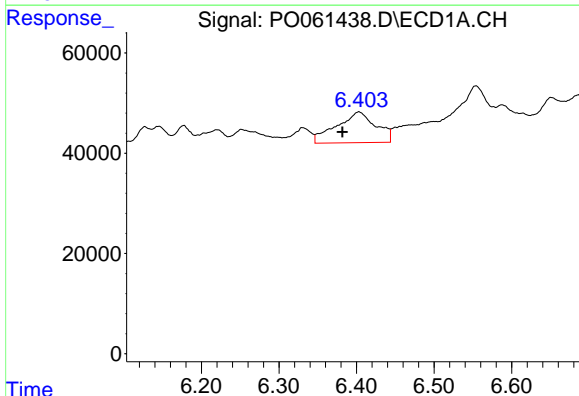
R.T.: 6.403 min
 Delta R.T.: -0.045 min
 Response: 216577
 Conc: 123.79 ng/ml

Instrument :
 ECD_O
 ClientSampleId :
 40241



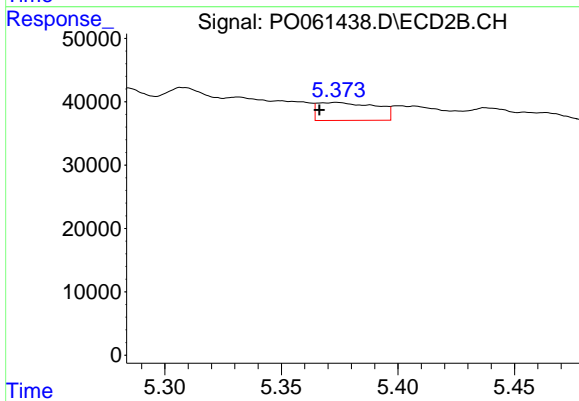
#25 AR-1248-5

R.T.: 5.437 min
 Delta R.T.: 0.031 min
 Response: 22438
 Conc: 17.75 ng/ml



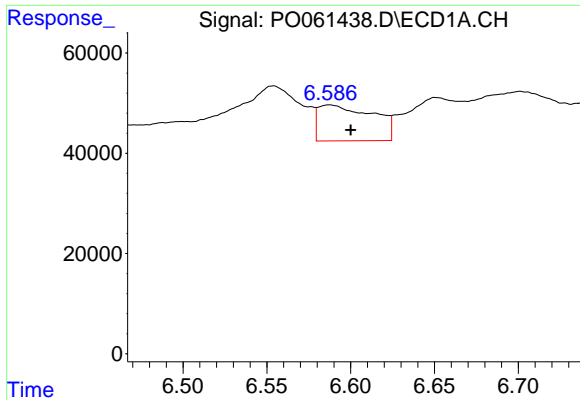
#26 AR-1254-1

R.T.: 6.403 min
 Delta R.T.: 0.021 min
 Response: 216577
 Conc: 112.41 ng/ml



#26 AR-1254-1

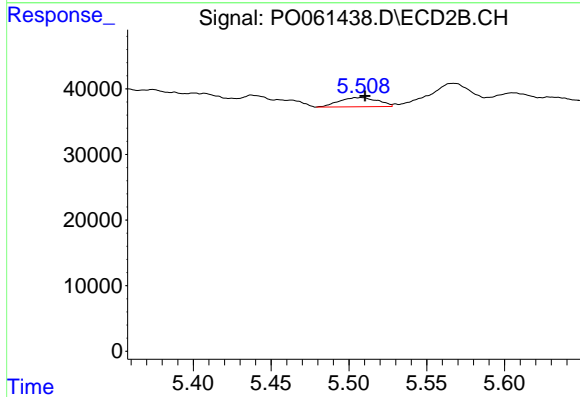
R.T.: 5.374 min
 Delta R.T.: 0.007 min
 Response: 49515
 Conc: 24.03 ng/ml



#27 AR-1254-2

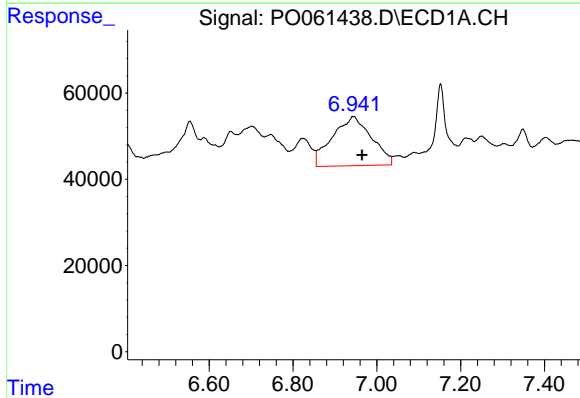
R.T.: 6.587 min
 Delta R.T.: -0.013 min
 Response: 163256
 Conc: 51.88 ng/ml

Instrument :
 ECD_O
 ClientSampleId :
 40241



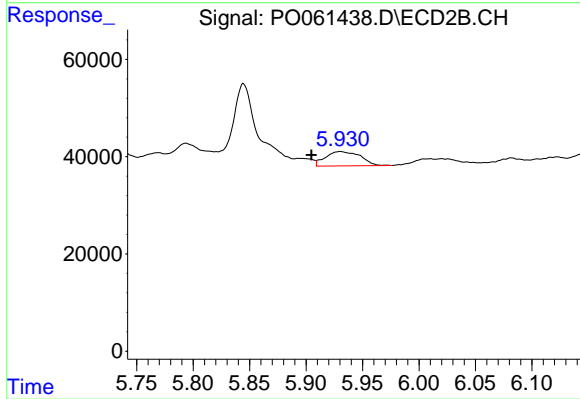
#27 AR-1254-2

R.T.: 5.508 min
 Delta R.T.: -0.002 min
 Response: 24298
 Conc: 12.88 ng/ml



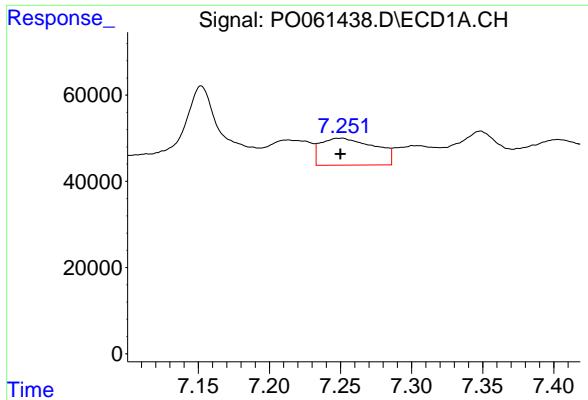
#28 AR-1254-3

R.T.: 6.946 min
 Delta R.T.: -0.019 min
 Response: 740280
 Conc: 210.19 ng/ml



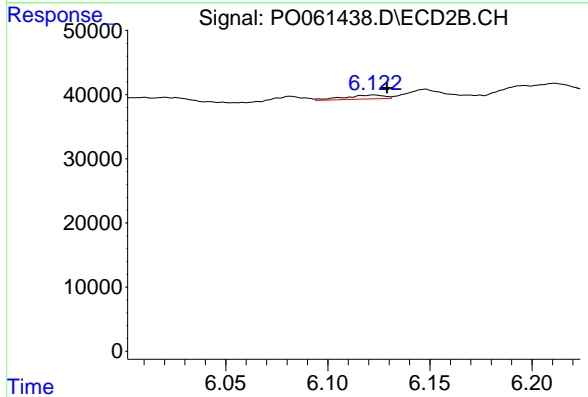
#28 AR-1254-3

R.T.: 5.930 min
 Delta R.T.: 0.026 min
 Response: 63743
 Conc: 20.05 ng/ml

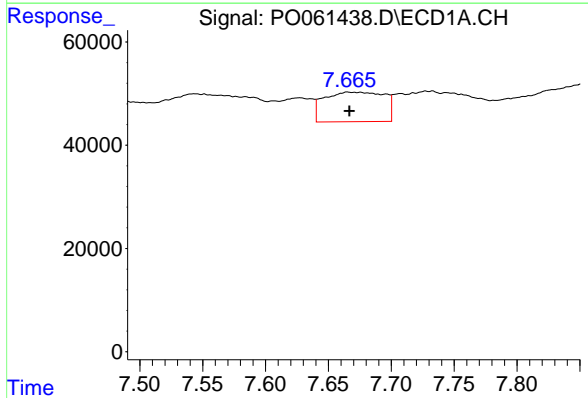


#29 AR-1254-4
 R.T.: 7.251 min
 Delta R.T.: 0.000 min
 Response: 165854
 Conc: 61.27 ng/ml

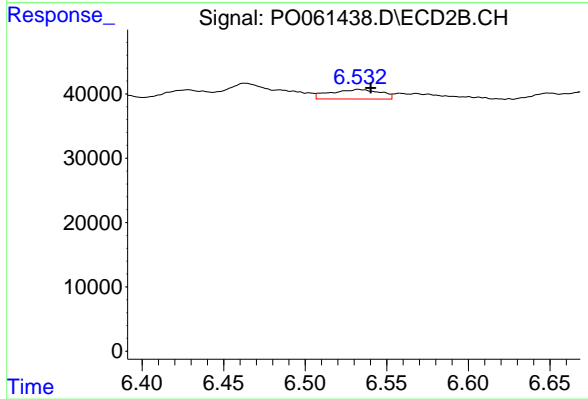
Instrument :
 ECD_O
 ClientSampled :
 40241



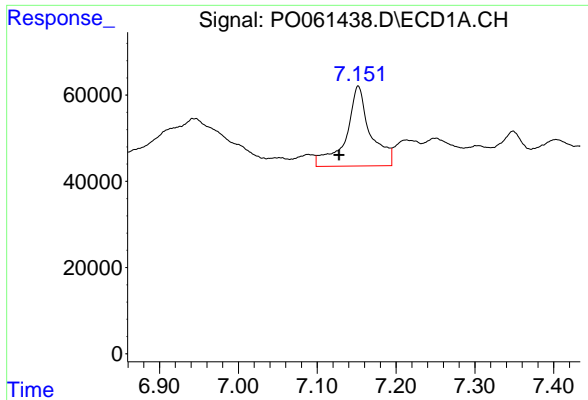
#29 AR-1254-4
 R.T.: 6.123 min
 Delta R.T.: -0.006 min
 Response: 8402
 Conc: 4.04 ng/ml



#30 AR-1254-5
 R.T.: 7.665 min
 Delta R.T.: -0.001 min
 Response: 190413
 Conc: 64.57 ng/ml

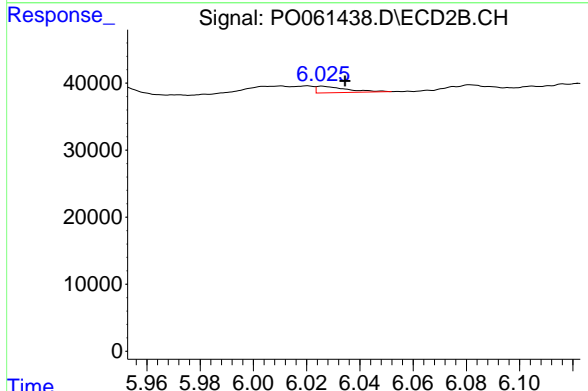


#30 AR-1254-5
 R.T.: 6.532 min
 Delta R.T.: -0.008 min
 Response: 31606
 Conc: 9.99 ng/ml

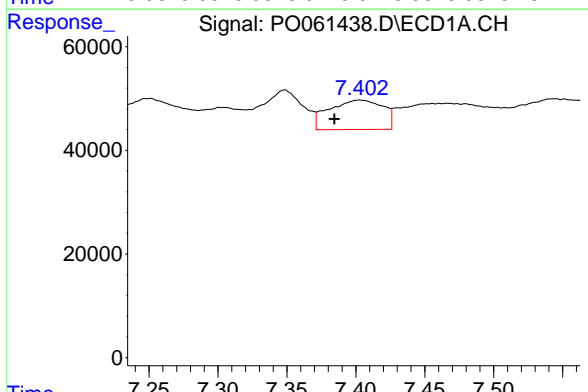


#31 AR-1260-1
 R.T.: 7.152 min
 Delta R.T.: 0.024 min
 Response: 397942
 Conc: 163.45 ng/ml

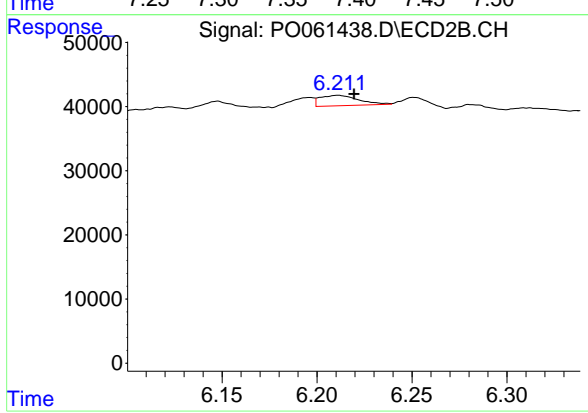
Instrument :
 ECD_O
 ClientSampleId :
 40241



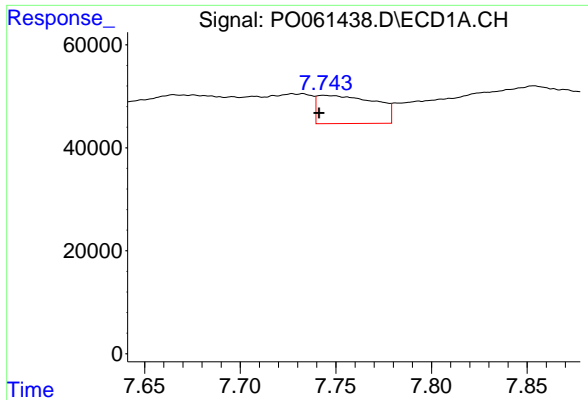
#31 AR-1260-1
 R.T.: 6.026 min
 Delta R.T.: -0.009 min
 Response: 7688
 Conc: 3.65 ng/ml



#32 AR-1260-2
 R.T.: 7.403 min
 Delta R.T.: 0.018 min
 Response: 154587
 Conc: 51.13 ng/ml

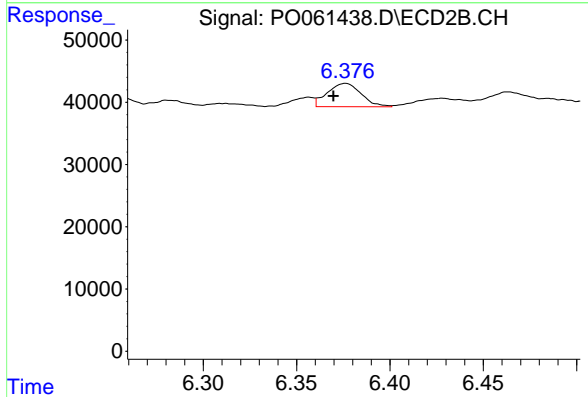


#32 AR-1260-2
 R.T.: 6.211 min
 Delta R.T.: -0.008 min
 Response: 22719
 Conc: 8.81 ng/ml

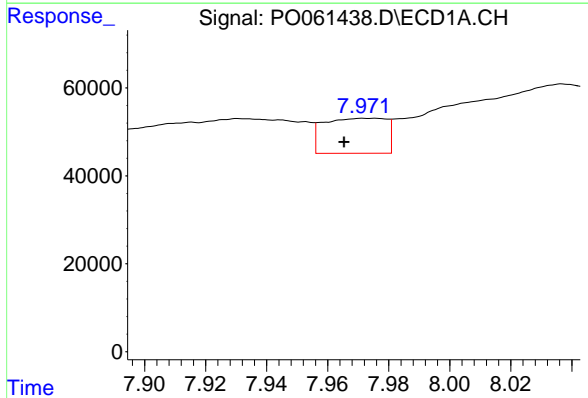


#33 AR-1260-3
 R.T.: 7.744 min
 Delta R.T.: 0.003 min
 Response: 115033
 Conc: 48.20 ng/ml

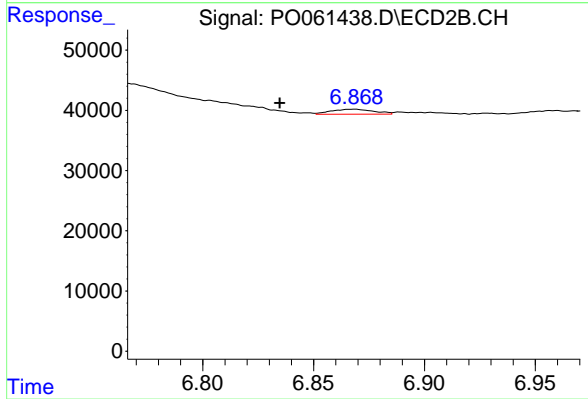
Instrument :
 ECD_O
 ClientSampleId :
 40241



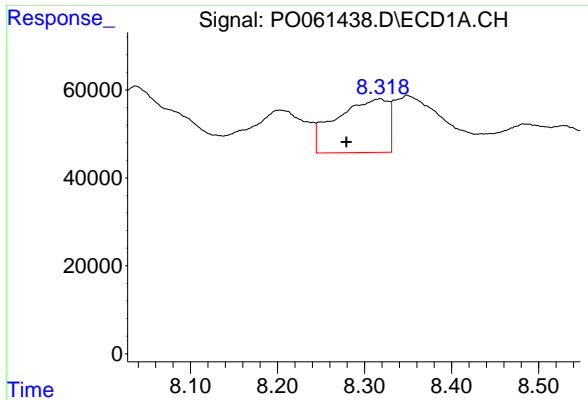
#33 AR-1260-3
 R.T.: 6.376 min
 Delta R.T.: 0.007 min
 Response: 47279
 Conc: 19.63 ng/ml



#34 AR-1260-4
 R.T.: 7.975 min
 Delta R.T.: 0.010 min
 Response: 113460
 Conc: 40.55 ng/ml



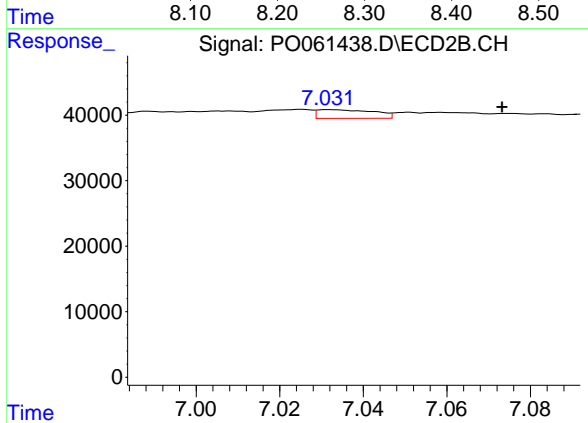
#34 AR-1260-4
 R.T.: 6.869 min
 Delta R.T.: 0.034 min
 Response: 11175
 Conc: 5.22 ng/ml



#35 AR-1260-5

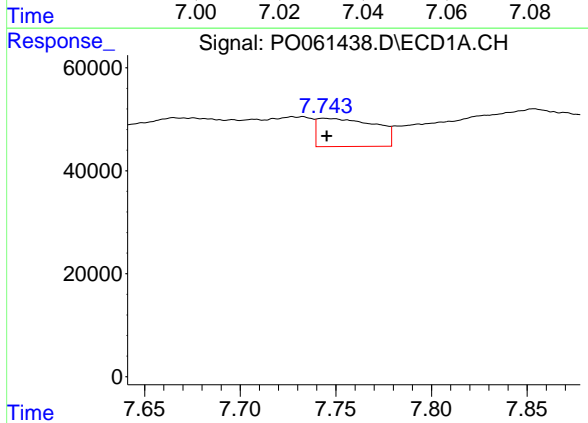
R.T.: 8.318 min
 Delta R.T.: 0.039 min
 Response: 506024
 Conc: 92.93 ng/ml

Instrument :
 ECD_O
 ClientSampleId :
 40241



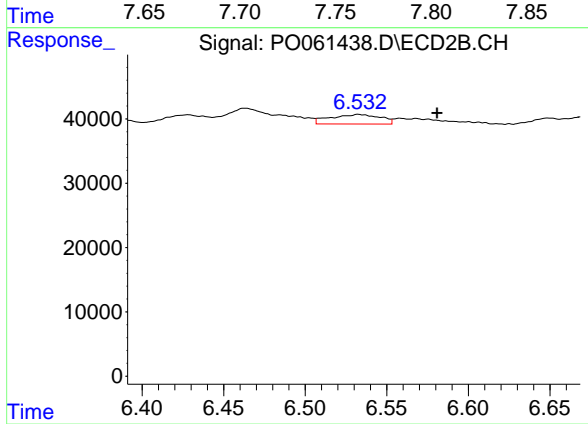
#35 AR-1260-5

R.T.: 7.032 min
 Delta R.T.: -0.042 min
 Response: 12416
 Conc: 2.57 ng/ml



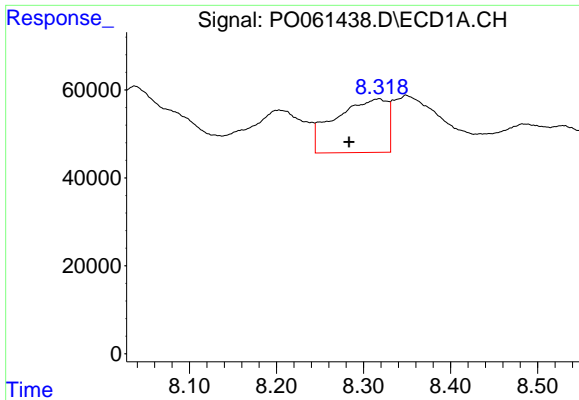
#36 AR-1262-1

R.T.: 7.744 min
 Delta R.T.: -0.001 min
 Response: 115033
 Conc: 32.57 ng/ml



#36 AR-1262-1

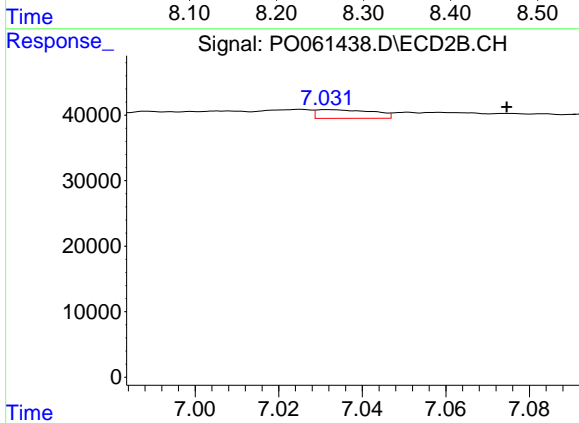
R.T.: 6.532 min
 Delta R.T.: -0.048 min
 Response: 31606
 Conc: 10.58 ng/ml



#37 AR-1262-2

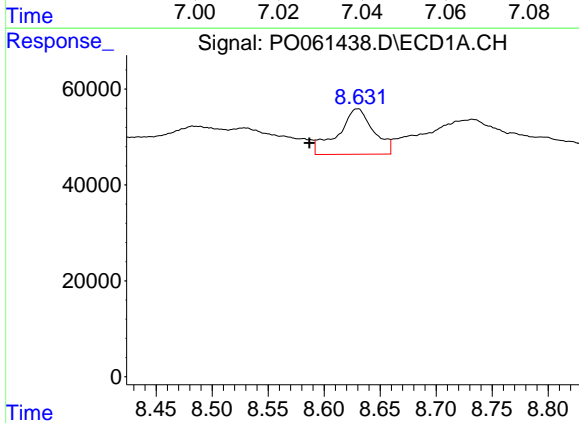
R.T.: 8.318 min
 Delta R.T.: 0.035 min
 Response: 506024
 Conc: 81.17 ng/ml

Instrument :
 ECD_O
 ClientSampleId :
 40241



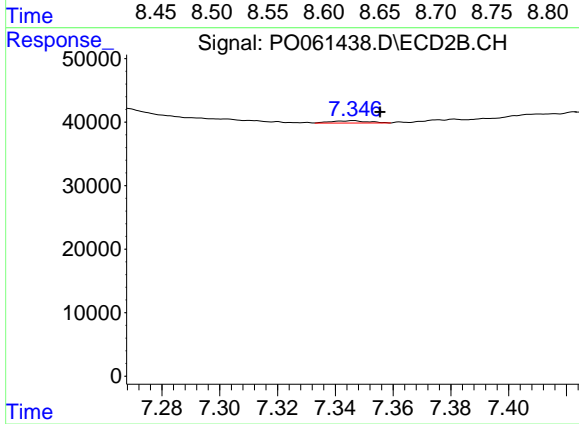
#37 AR-1262-2

R.T.: 7.032 min
 Delta R.T.: -0.043 min
 Response: 12416
 Conc: 2.39 ng/ml



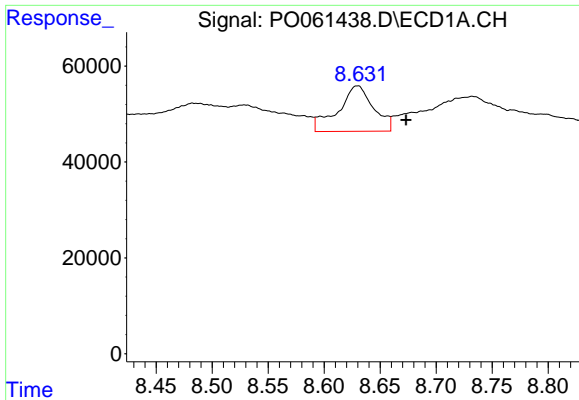
#38 AR-1262-3

R.T.: 8.630 min
 Delta R.T.: 0.043 min
 Response: 208933
 Conc: 49.03 ng/ml



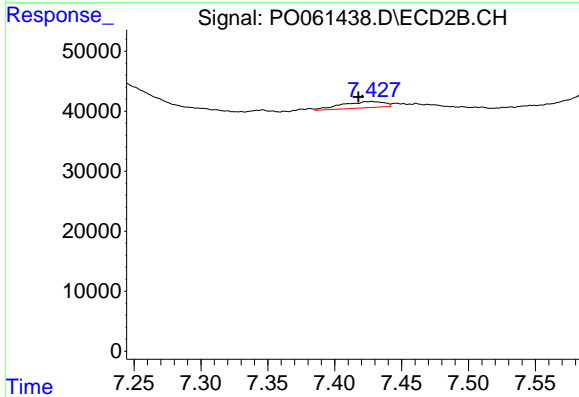
#38 AR-1262-3

R.T.: 7.346 min
 Delta R.T.: -0.009 min
 Response: 3056
 Conc: 1.44 ng/ml

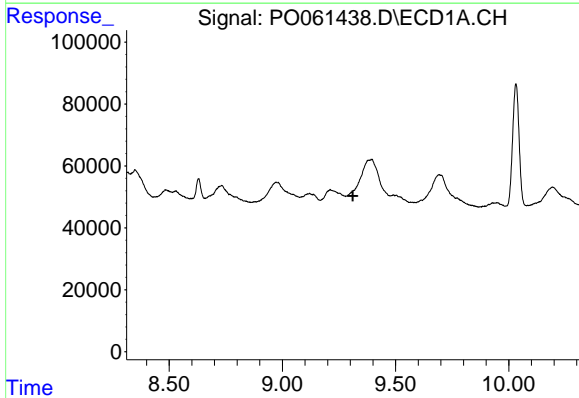


#39 AR-1262-4
 R.T.: 8.630 min
 Delta R.T.: -0.043 min
 Response: 208933
 Conc: 64.08 ng/ml

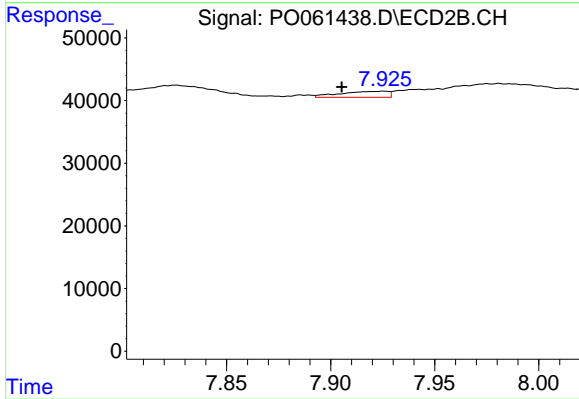
Instrument :
 ECD_O
 ClientSampleId :
 40241



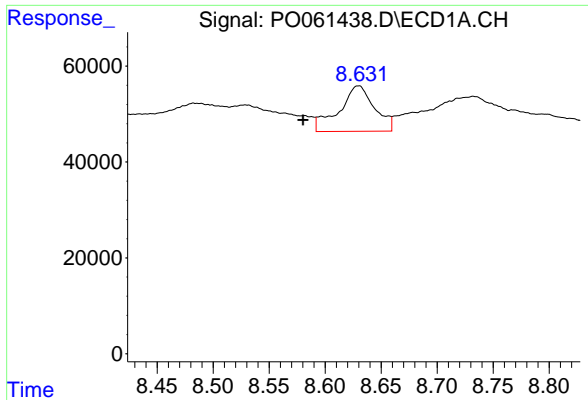
#39 AR-1262-4
 R.T.: 7.428 min
 Delta R.T.: 0.010 min
 Response: 22970
 Conc: 6.01 ng/ml



#40 AR-1262-5
 R.T.: 0.000 min
 Exp R.T. : 9.311 min
 Response: 0
 Conc: N.D.

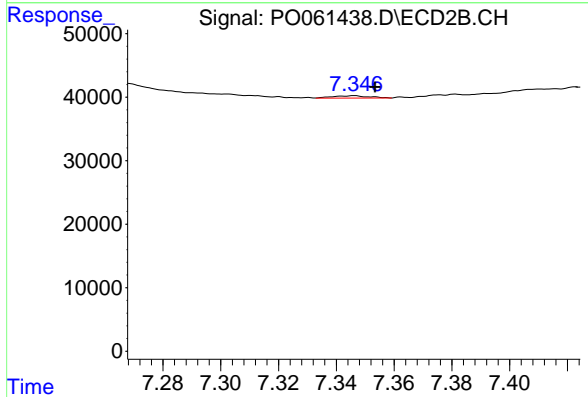


#40 AR-1262-5
 R.T.: 7.926 min
 Delta R.T.: 0.020 min
 Response: 15623
 Conc: 9.33 ng/ml

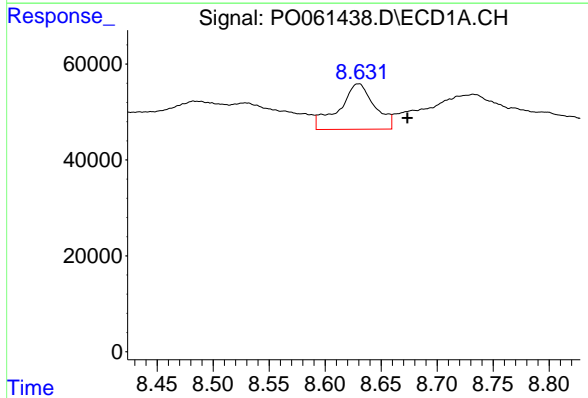


#41 AR-1268-1
 R.T.: 8.630 min
 Delta R.T.: 0.050 min
 Response: 208933
 Conc: 28.31 ng/ml

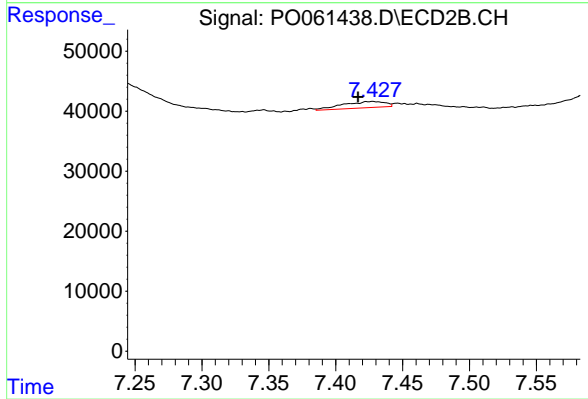
Instrument :
 ECD_O
 ClientSampleId :
 40241



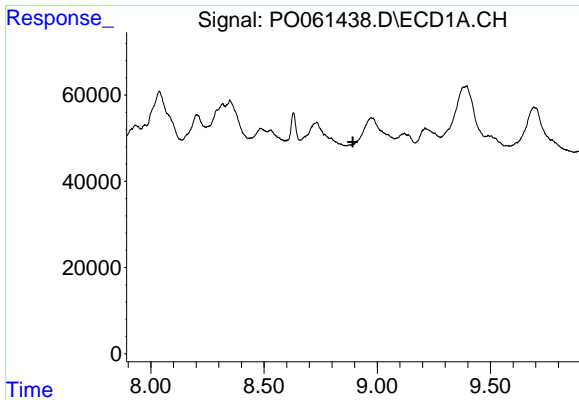
#41 AR-1268-1
 R.T.: 7.346 min
 Delta R.T.: -0.007 min
 Response: 3056
 Conc: 0.52 ng/ml



#42 AR-1268-2
 R.T.: 8.630 min
 Delta R.T.: -0.043 min
 Response: 208933
 Conc: 30.93 ng/ml



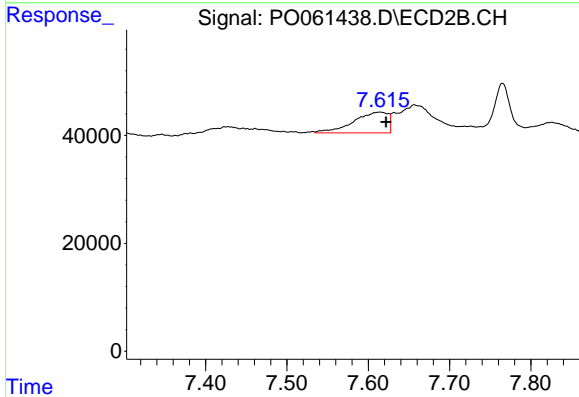
#42 AR-1268-2
 R.T.: 7.428 min
 Delta R.T.: 0.011 min
 Response: 22970
 Conc: 4.31 ng/ml



#43 AR-1268-3

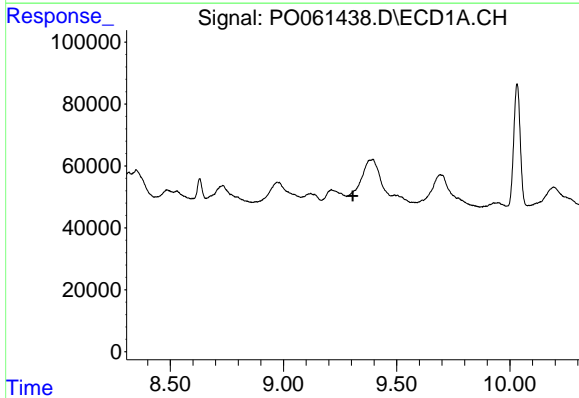
R.T.: 0.000 min
 Exp R.T. : 8.893 min
 Response: 0
 Conc: N.D.

Instrument :
 ECD_O
 ClientSampleId :
 40241



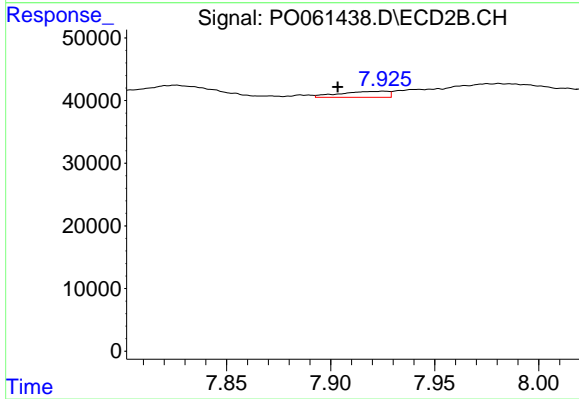
#43 AR-1268-3

R.T.: 7.615 min
 Delta R.T.: -0.007 min
 Response: 113595
 Conc: 25.63 ng/ml



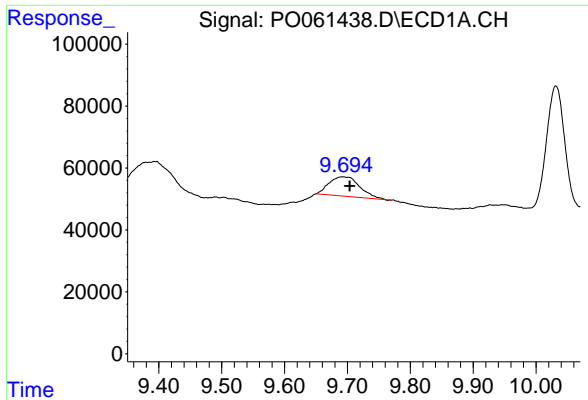
#44 AR-1268-4

R.T.: 0.000 min
 Exp R.T. : 9.306 min
 Response: 0
 Conc: N.D.



#44 AR-1268-4

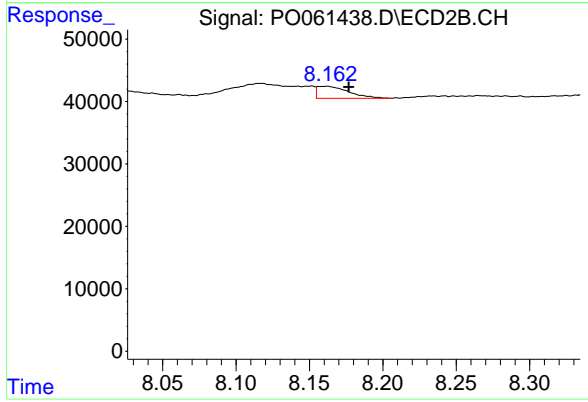
R.T.: 7.926 min
 Delta R.T.: 0.022 min
 Response: 15623
 Conc: 8.18 ng/ml



#45 AR-1268-5

R.T.: 9.693 min
Delta R.T.: -0.011 min
Response: 211540
Conc: 13.34 ng/ml

Instrument :
ECD_O
ClientSampleId :
40241



#45 AR-1268-5

R.T.: 8.163 min
Delta R.T.: -0.014 min
Response: 28720
Conc: 2.39 ng/ml