

Data Path : Z:\pestpcbsrv\HPCHEM1\ECD_0\Data\P0092719\
 Data File : P0061425.D
 Signal(s) : Signal #1: ECD1A.CH Signal #2: ECD2B.CH
 Acq On : 27 Sep 2019 15:01
 Operator : SM/AJ
 Sample : K5039-19RE 5X
 Misc :
 ALS Vial : 20 Sample Multiplier: 1

Instrument :
 ECD_0
ClientSampled :
 30430RE

Manual Integrations
APPROVED
 Ankita
 10/1/2019 8:44:12 AM

Integration File signal 1: autoint1.e
 Integration File signal 2: autoint2.e
 Quant Time: Sep 27 17:29:16 2019
 Quant Method : Z:\pestpcbsrv\HPCHEM1\ECD_0\methods\P0091319.M
 Quant Title : GC EXTRACTABLES
 QLast Update : Sat Sep 14 00:06:36 2019
 Response via : Initial Calibration
 Integrator: ChemStation 6890 Scale Mode: Small noise peaks clipped

Volume Inj. : 2 µl
 Signal #1 Phase : ZB-MR1 Signal #2 Phase: ZB-MR2
 Signal #1 Info : 30Mx0.32mmx 0.50µ Signal #2 Info : 30M x 0.32mm x 0.25µm

Compound	RT#1	RT#2	Resp#1	Resp#2	ng/ml	ng/ml

System Monitoring Compounds						
1) SA Tetrachlo...	4.379	3.533	217447	170201	5.910m	6.096
2) SA Decachlor...	10.046	8.405	311274	204862	6.775m	5.845

Target Compounds

 (f)=RT Delta > 1/2 Window (#)=Amounts differ by > 25% (m)=manual int.

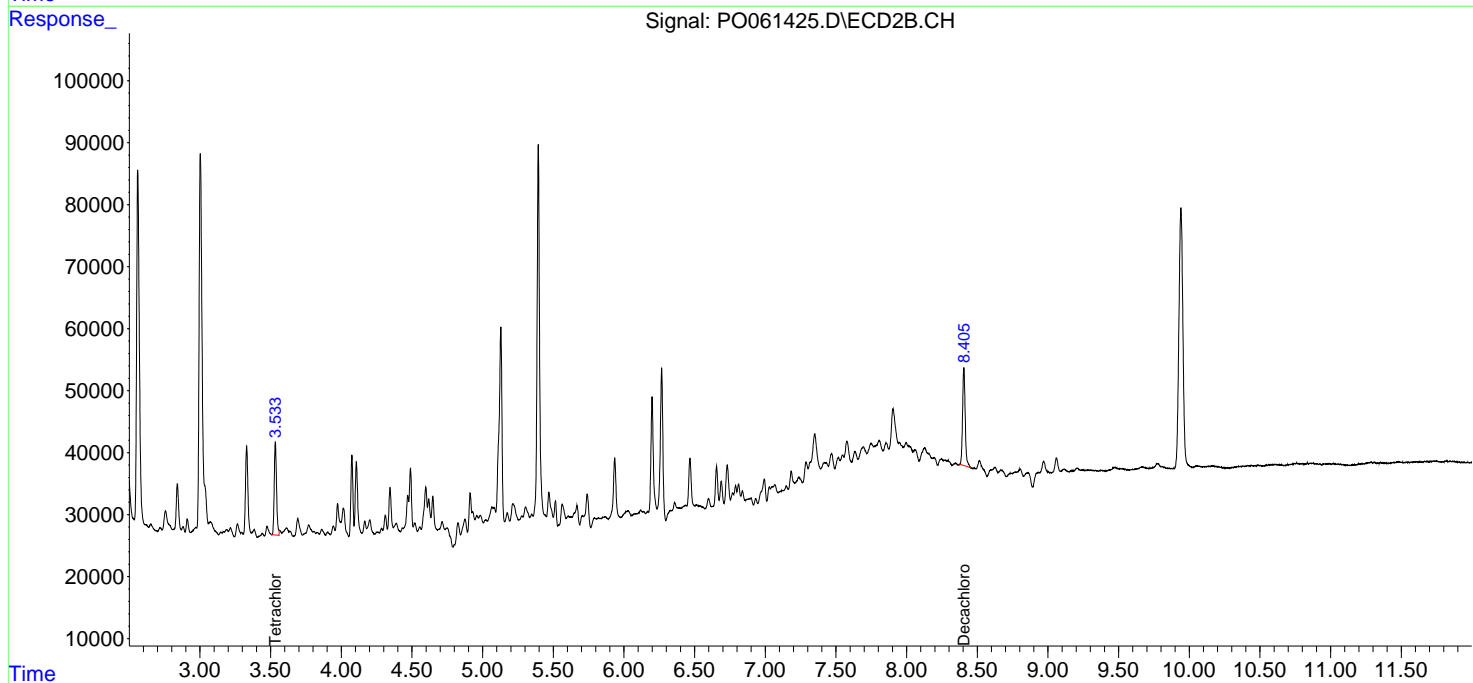
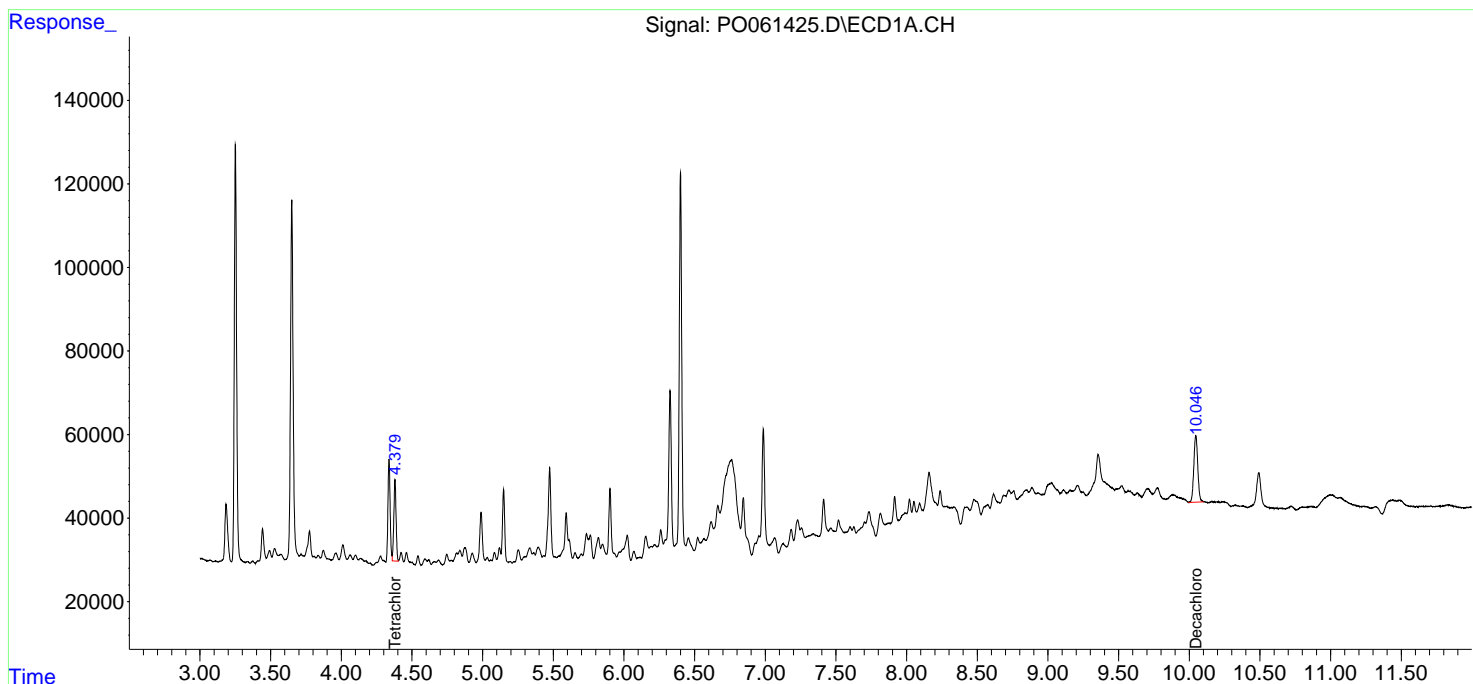
Data Path : Z:\pestpcbsrv\HPCHEM1\ECD_0\Data\P0092719\
 Data File : P0061425.D
 Signal(s) : Signal #1: ECD1A.CH Signal #2: ECD2B.CH
 Acq On : 27 Sep 2019 15:01
 Operator : SM/AJ
 Sample : K5039-19RE 5X
 Misc :
 ALS Vial : 20 Sample Multiplier: 1

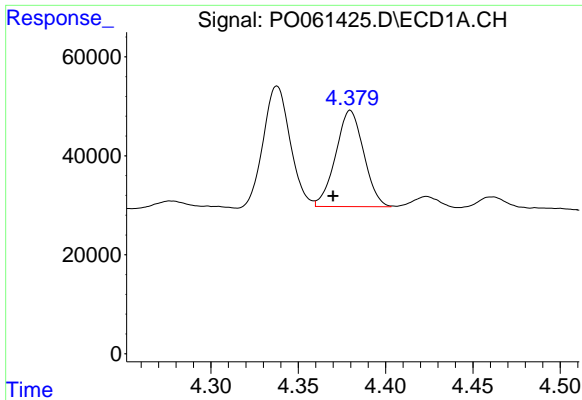
Instrument :
 ECD_O
ClientSampled :
 30430RE

Manual Integrations
APPROVED
 Ankita
 10/1/2019 8:44:12 AM

Integration File signal 1: autoint1.e
 Integration File signal 2: autoint2.e
 Quant Time: Sep 27 17:29:16 2019
 Quant Method : Z:\pestpcbsrv\HPCHEM1\ECD_0\methods\P0091319.M
 Quant Title : GC EXTRACTABLES
 QLast Update : Sat Sep 14 00:06:36 2019
 Response via : Initial Calibration
 Integrator: ChemStation 6890 Scale Mode: Small noise peaks clipped

Volume Inj. : 2 µl
 Signal #1 Phase : ZB-MR1 Signal #2 Phase: ZB-MR2
 Signal #1 Info : 30Mx0.32mmx 0.50µ Signal #2 Info : 30M x 0.32mm x 0.25µm

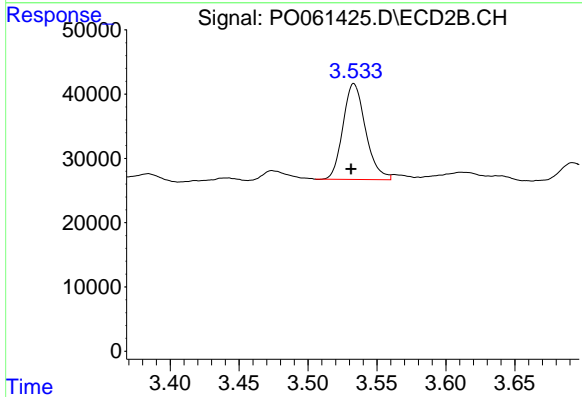




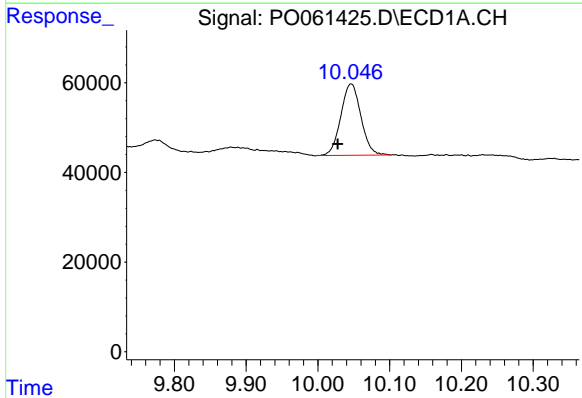
#1 Tetrachloro-m-xylene
 R.T.: 4.379 min
 Delta R.T.: 0.009 min
 Response: 217447
 Conc: 5.91 ng/ml m

Instrument :
 ECD_O
 ClientSampled :
 30430RE

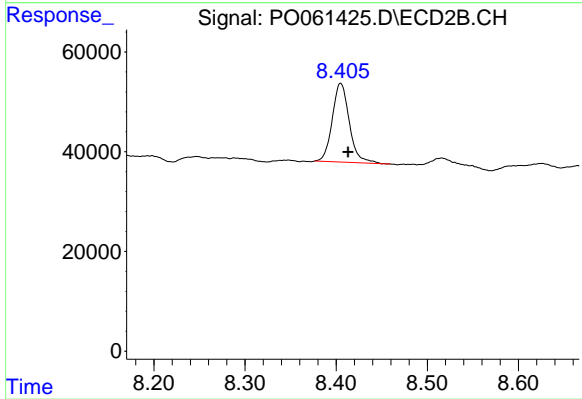
Manual Integrations
 APPROVED
 Ankita
 10/1/2019 8:44:12 AM



#1 Tetrachloro-m-xylene
 R.T.: 3.533 min
 Delta R.T.: 0.002 min
 Response: 170201
 Conc: 6.10 ng/ml



#2 Decachlorobiphenyl
 R.T.: 10.046 min
 Delta R.T.: 0.018 min
 Response: 311274
 Conc: 6.77 ng/ml m



#2 Decachlorobiphenyl
 R.T.: 8.405 min
 Delta R.T.: -0.008 min
 Response: 204862
 Conc: 5.84 ng/ml