

Data Path : Z:\pestpcbsrv\HPCHEM1\ECD\_0\Data\P0092721\  
 Data File : P0081566.D  
 Signal(s) : Signal #1: ECD1A.CH Signal #2: ECD2B.CH  
 Acq On : 27 Sep 2021 11:30  
 Operator : AJ\MA  
 Sample : M3910-03RE  
 Misc :  
 ALS Vial : 8 Sample Multiplier: 1

Instrument :  
 ECD\_O  
 ClientSampled :

Integration File signal 1: autoint1.e  
 Integration File signal 2: autoint2.e  
 Quant Time: Sep 28 02:56:32 2021  
 Quant Method : Z:\pestpcbsrv\HPCHEM1\ECD\_0\methods\P0092321.M  
 Quant Title : GC EXTRACTABLES  
 QLast Update : Fri Sep 24 02:21:54 2021  
 Response via : Initial Calibration  
 Integrator: ChemStation 6890 Scale Mode: Small noise peaks clipped

Volume Inj. : 2 µl  
 Signal #1 Phase : ZB-MR1 Signal #2 Phase: ZB-MR2  
 Signal #1 Info : 30Mx0.32mmx 0.50µ Signal #2 Info : 30M x 0.32mm x 0.25µm

| Compound                    | RT#1   | RT#2   | Resp#1  | Resp#2 | ng/ml   | ng/ml     |
|-----------------------------|--------|--------|---------|--------|---------|-----------|
| System Monitoring Compounds |        |        |         |        |         |           |
| 1) SA Tetrachlo...          | 4.869  | 3.986  | 1837767 | 548216 | 20.608  | 20.577    |
| 2) SA Decachlor...          | 10.879 | 9.331  | 2302450 | 702378 | 30.910  | 30.245    |
| Target Compounds            |        |        |         |        |         |           |
| 3) L1 AR-1016-1             | 0.000  | 5.276  | 0       | 13455  | N.D.    | 14.935 #  |
| 4) L1 AR-1016-2             | 6.249f | 5.276  | 33896   | 13455  | 7.313   | 9.853 #   |
| 6) L1 AR-1016-4             | 0.000  | 5.529  | 0       | 20464  | N.D.    | 33.037 #  |
| 7) L1 AR-1016-5             | 6.703  | 5.753  | 81477   | 21071  | 35.803  | 29.845    |
| 8) L2 AR-1221-1             | 5.121  | 4.240  | 278314  | 7216   | 254.333 | 25.084 #  |
| 9) L2 AR-1221-2             | 5.223  | 4.341  | 21889   | 43827  | 27.762  | 182.299 # |
| 10) L2 AR-1221-3            | 5.335f | 4.435  | 229085  | 13481  | 91.051  | 17.375 #  |
| 11) L3 AR-1232-1            | 5.335f | 4.435  | 229085  | 13481  | 117.539 | 22.484 #  |
| 12) L3 AR-1232-2            | 0.000  | 5.276  | 0       | 13455  | N.D.    | 21.263 #  |
| 13) L3 AR-1232-3            | 6.249f | 0.000  | 33896   | 0      | 16.815  | N.D. #    |
| 14) L3 AR-1232-4            | 0.000  | 5.578  | 0       | 25447  | N.D.    | 84.684 #  |
| 15) L3 AR-1232-5            | 6.494  | 5.753  | 75189   | 21071  | 101.974 | 66.286 #  |
| 16) L4 AR-1242-1            | 0.000  | 5.276f | 0       | 13455  | N.D.    | 18.342 #  |
| 17) L4 AR-1242-2            | 6.249f | 5.276  | 33896   | 13455  | 9.439   | 12.221 #  |
| 19) L4 AR-1242-4            | 0.000  | 5.578  | 0       | 25447  | N.D.    | 44.318 #  |
| 20) L4 AR-1242-5            | 7.184  | 6.136  | 22495   | 132311 | 11.407  | 177.059 # |
| 21) L5 AR-1248-1            | 0.000  | 5.276  | 0       | 13455  | N.D.    | 22.483 #  |
| 22) L5 AR-1248-2            | 6.494  | 5.529  | 75189   | 20464  | 28.507  | 23.061    |
| 23) L5 AR-1248-3            | 6.703  | 5.578  | 81477   | 25447  | 26.032  | 29.107    |
| 24) L5 AR-1248-4            | 7.138  | 5.753  | 402060  | 21071  | 116.736 | 20.738 #  |
| 25) L5 AR-1248-5            | 7.184  | 0.000  | 22495   | 0      | 6.654   | N.D. #    |
| 26) L6 AR-1254-1            | 7.138f | 6.136  | 402060  | 132311 | 112.136 | 86.407    |
| 27) L6 AR-1254-2            | 7.345  | 6.292  | 382532  | 53588  | 69.376  | 39.388 #  |
| 28) L6 AR-1254-3            | 7.722  | 6.716  | 403821  | 191975 | 71.567  | 96.510 #  |
| 29) L6 AR-1254-4            | 8.018  | 6.959  | 433290  | 107111 | 105.370 | 85.783    |
| 30) L6 AR-1254-5            | 8.448  | 7.391  | 581058  | 304376 | 126.060 | 162.818 # |
| 31) L7 AR-1260-1            | 7.888  | 6.855  | 171873  | 112795 | 40.658  | 80.798 #  |
| 32) L7 AR-1260-2            | 8.151  | 7.053  | 1059559 | 91830  | 204.137 | 56.188 #  |
| 33) L7 AR-1260-3            | 8.514  | 7.209  | 286608  | 84473  | 88.453  | 50.799 #  |
| 34) L7 AR-1260-4            | 8.747  | 7.695  | 440679  | 45662  | 110.555 | 41.083 #  |
| 35) L7 AR-1260-5            | 9.076  | 7.946  | 377825  | 95264  | 51.001  | 38.575    |
| 36) L8 AR-1262-1            | 8.514  | 7.391  | 286608  | 304376 | 55.294  | 305.797 # |
| 37) L8 AR-1262-2            | 9.076  | 7.946  | 377825  | 95264  | 42.362  | 31.095 #  |
| 38) L8 AR-1262-3            | 9.408f | 8.233  | 1376299 | 82390  | 343.073 | 61.562 #  |
| 39) L8 AR-1262-4            | 9.477  | 8.297  | 84717   | 102563 | 34.660  | 43.587 #  |
| 40) L8 AR-1262-5            | 10.139 | 8.799  | 120327  | 32695  | 35.313  | 28.752    |
| 41) L9 AR-1268-1            | 9.408f | 8.233  | 1376299 | 82390  | 128.205 | 21.484 #  |
| 42) L9 AR-1268-2            | 9.477  | 8.297  | 84717   | 102563 | 8.383   | 29.453 #  |
| 43) L9 AR-1268-3            | 0.000  | 8.526f | 0       | 21302  | N.D.    | 6.785 #   |

Data Path : Z:\pestpcbsrv\HPCHEM1\ECD\_0\Data\P0092721\  
 Data File : P0081566.D  
 Signal(s) : Signal #1: ECD1A.CH Signal #2: ECD2B.CH  
 Acq On : 27 Sep 2021 11:30  
 Operator : AJ\MA  
 Sample : M3910-03RE  
 Misc :  
 ALS Vial : 8 Sample Multiplier: 1

Instrument :  
 ECD\_0  
 ClientSampleId :

Integration File signal 1: autoint1.e  
 Integration File signal 2: autoint2.e  
 Quant Time: Sep 28 02:56:32 2021  
 Quant Method : Z:\pestpcbsrv\HPCHEM1\ECD\_0\methods\P0092321.M  
 Quant Title : GC EXTRACTABLES  
 QLast Update : Fri Sep 24 02:21:54 2021  
 Response via : Initial Calibration  
 Integrator: ChemStation 6890 Scale Mode: Small noise peaks clipped

Volume Inj. : 2 µl  
 Signal #1 Phase : ZB-MR1 Signal #2 Phase: ZB-MR2  
 Signal #1 Info : 30Mx0.32mmx 0.50µ Signal #2 Info : 30M x 0.32mm x 0.25µm

|     | Compound     | RT#1   | RT#2  | Resp#1 | Resp#2 | ng/ml  | ng/ml  |
|-----|--------------|--------|-------|--------|--------|--------|--------|
| 44) | L9 AR-1268-4 | 10.139 | 8.799 | 120327 | 32695  | 31.338 | 25.356 |
| 45) | L9 AR-1268-5 | 10.549 | 9.084 | 81434  | 31215  | 2.887  | 3.472  |

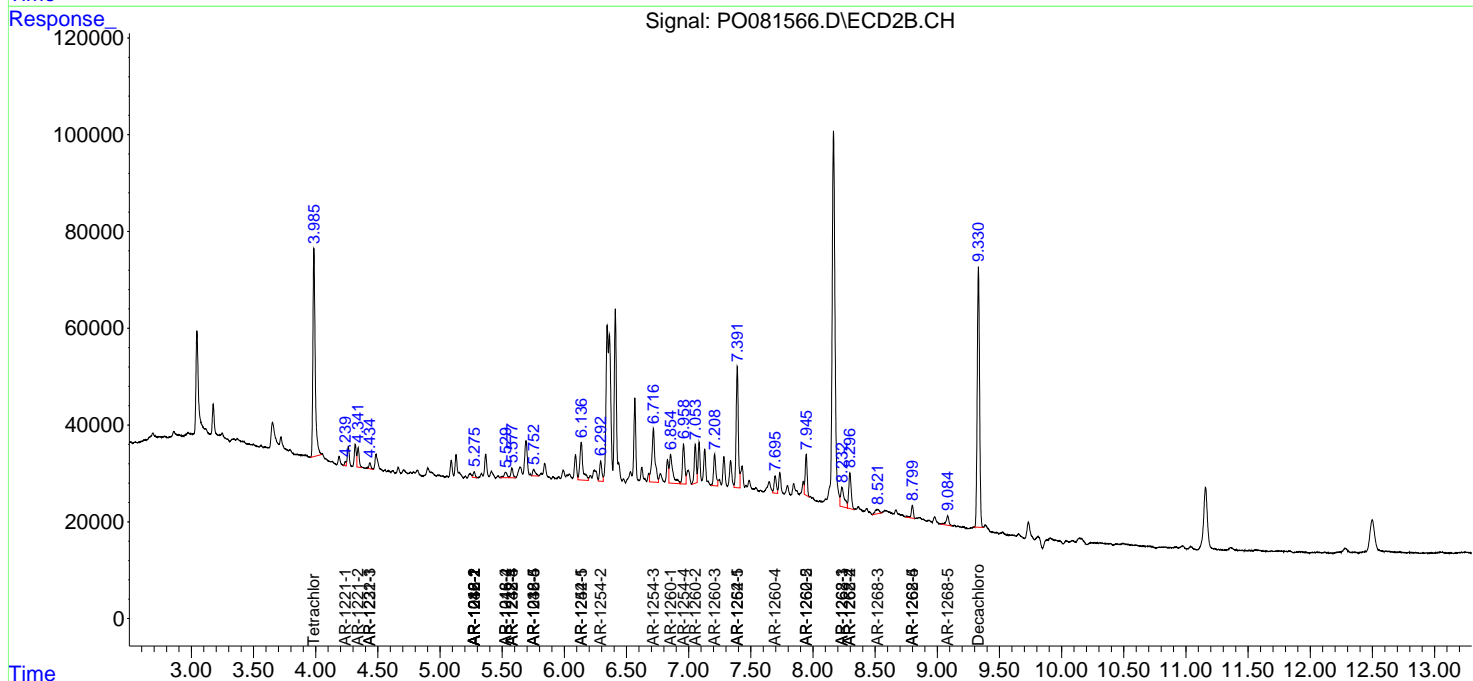
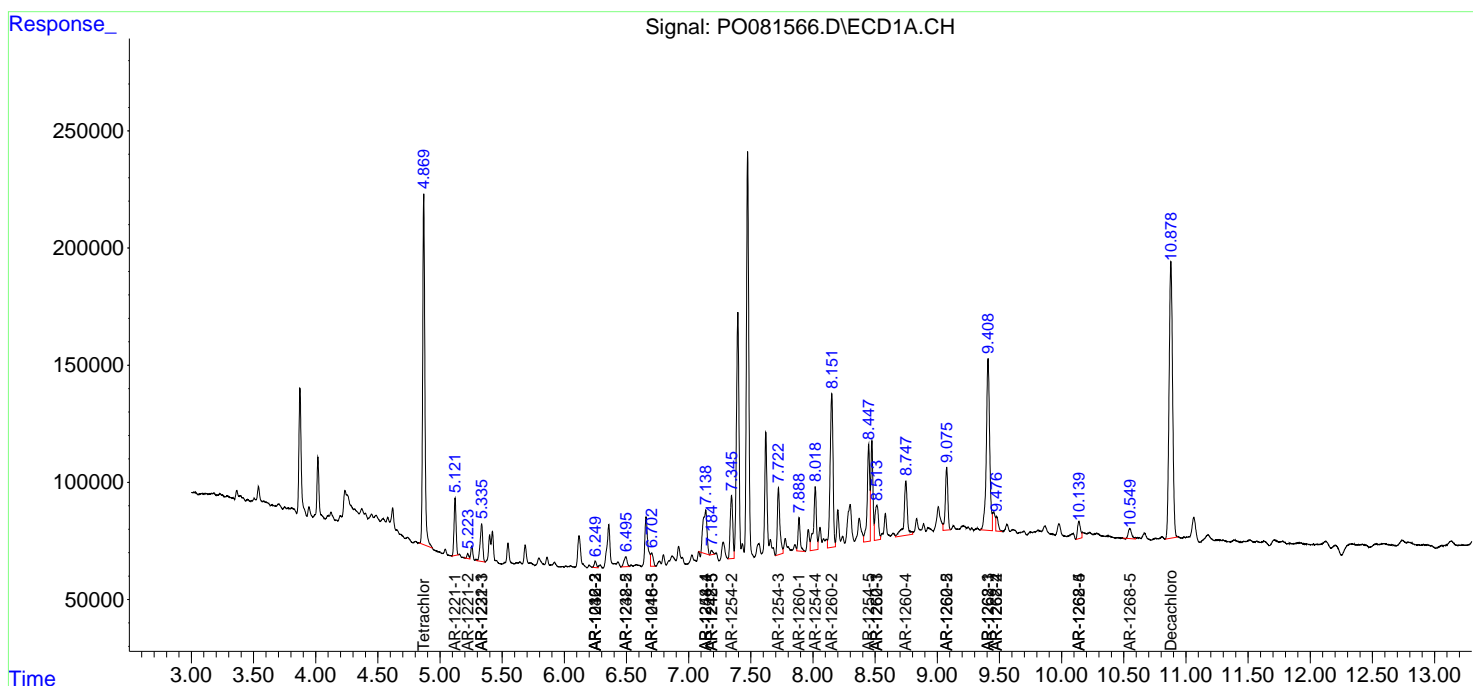
(f)=RT Delta > 1/2 Window (#)=Amounts differ by > 25% (m)=manual int.

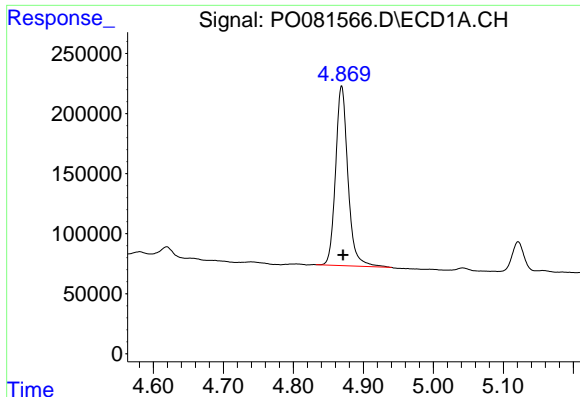
Data Path : Z:\pestpcbsrv\HPCHEM1\ECD\_0\Data\P0092721\  
 Data File : P0081566.D  
 Signal(s) : Signal #1: ECD1A.CH Signal #2: ECD2B.CH  
 Acq On : 27 Sep 2021 11:30  
 Operator : AJ\MA  
 Sample : M3910-03RE  
 Misc :  
 ALS Vial : 8 Sample Multiplier: 1

Instrument :  
 ECD\_O  
 ClientSampled :

Integration File signal 1: autoint1.e  
 Integration File signal 2: autoint2.e  
 Quant Time: Sep 28 02:56:32 2021  
 Quant Method : Z:\pestpcbsrv\HPCHEM1\ECD\_0\methods\P0092321.M  
 Quant Title : GC EXTRACTABLES  
 QLast Update : Fri Sep 24 02:21:54 2021  
 Response via : Initial Calibration  
 Integrator: ChemStation 6890 Scale Mode: Small noise peaks clipped

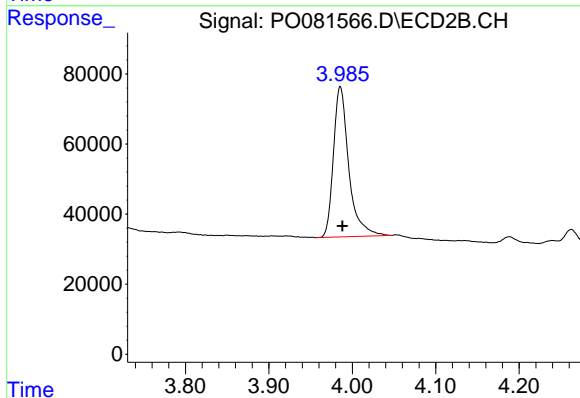
Volume Inj. : 2 µl  
 Signal #1 Phase : ZB-MR1 Signal #2 Phase: ZB-MR2  
 Signal #1 Info : 30Mx0.32mmx 0.50µ Signal #2 Info : 30M x 0.32mm x 0.25µm



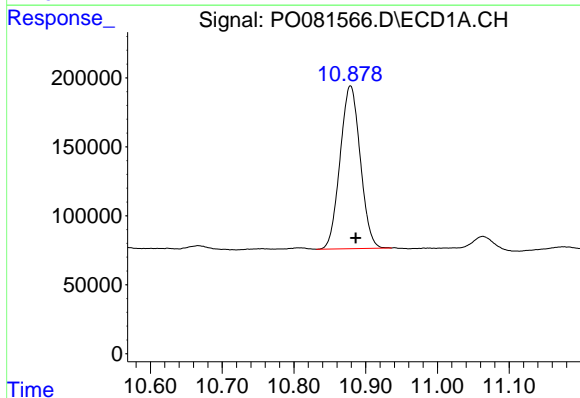


#1 Tetrachloro-m-xylene  
 R.T.: 4.869 min  
 Delta R.T.: -0.002 min  
 Response: 1837767  
 Conc: 20.61 ng/ml

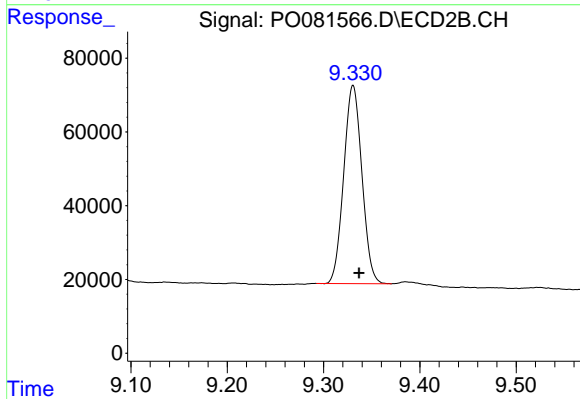
Instrument :  
 ECD\_O  
 ClientSampled :



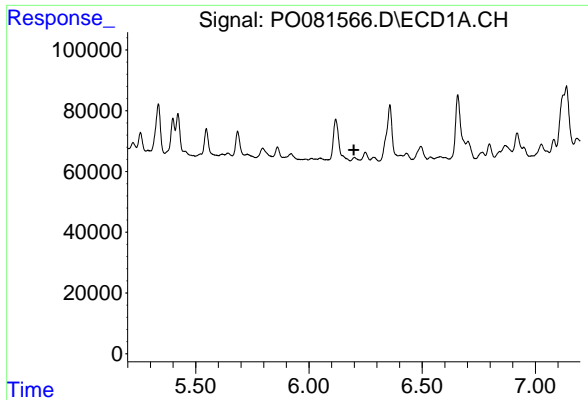
#1 Tetrachloro-m-xylene  
 R.T.: 3.986 min  
 Delta R.T.: -0.003 min  
 Response: 548216  
 Conc: 20.58 ng/ml



#2 Decachlorobiphenyl  
 R.T.: 10.879 min  
 Delta R.T.: -0.007 min  
 Response: 2302450  
 Conc: 30.91 ng/ml



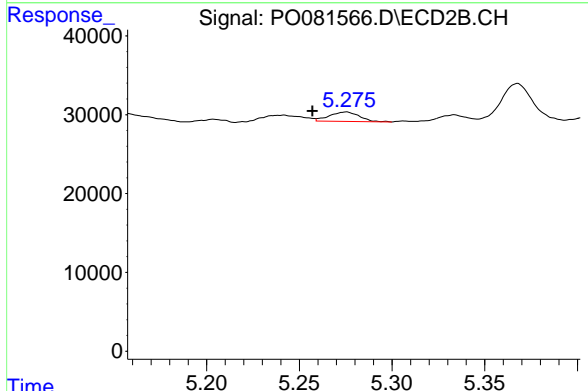
#2 Decachlorobiphenyl  
 R.T.: 9.331 min  
 Delta R.T.: -0.006 min  
 Response: 702378  
 Conc: 30.25 ng/ml



#3 AR-1016-1

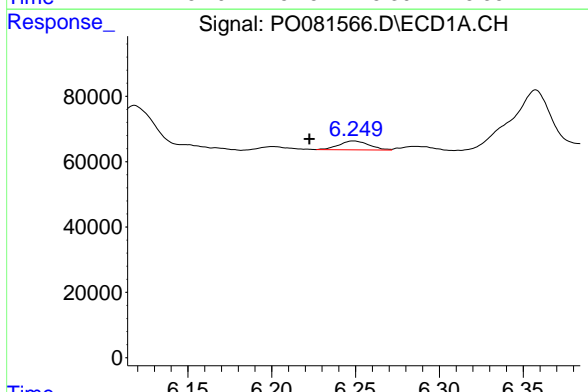
R.T.: 0.000 min  
 Exp R.T.: 6.199 min  
 Response: 0  
 Conc: N.D.

Instrument :  
 ECD\_O  
 ClientSampled :



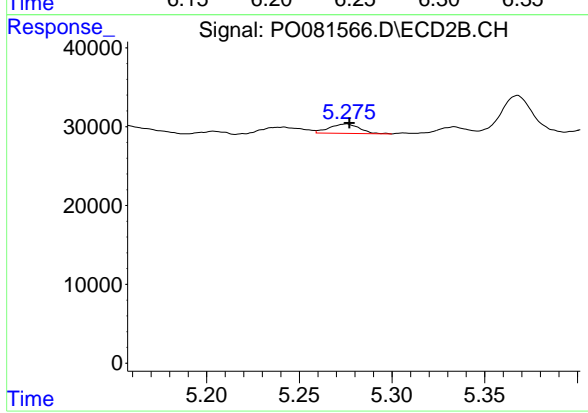
#3 AR-1016-1

R.T.: 5.276 min  
 Delta R.T.: 0.019 min  
 Response: 13455  
 Conc: 14.94 ng/ml



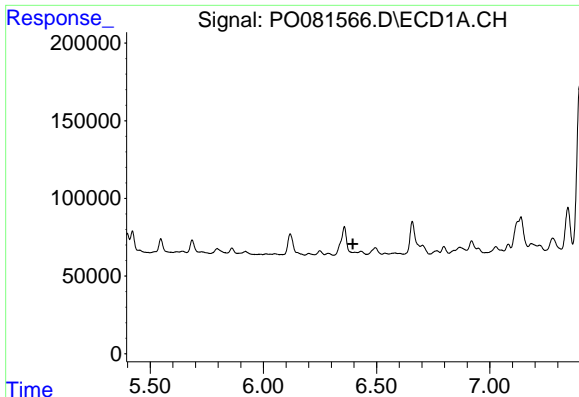
#4 AR-1016-2

R.T.: 6.249 min  
 Delta R.T.: 0.026 min  
 Response: 33896  
 Conc: 7.31 ng/ml



#4 AR-1016-2

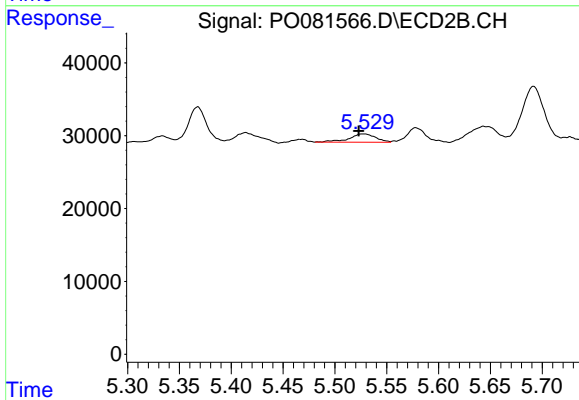
R.T.: 5.276 min  
 Delta R.T.: -0.001 min  
 Response: 13455  
 Conc: 9.85 ng/ml



#6 AR-1016-4

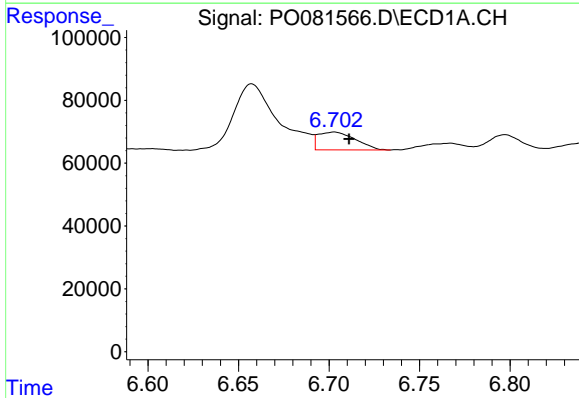
R.T.: 0.000 min  
 Exp R.T.: 6.395 min  
 Response: 0  
 Conc: N.D.

Instrument :  
 ECD\_O  
 ClientSampled :



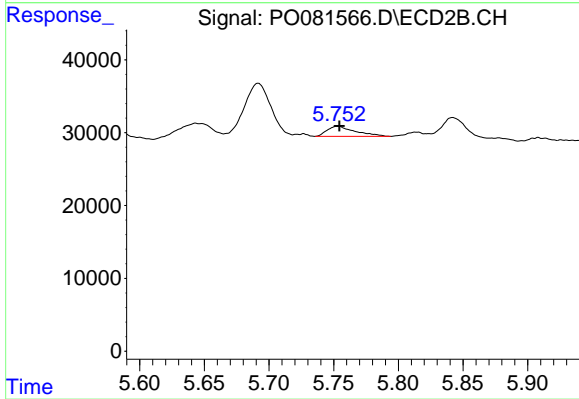
#6 AR-1016-4

R.T.: 5.529 min  
 Delta R.T.: 0.006 min  
 Response: 20464  
 Conc: 33.04 ng/ml



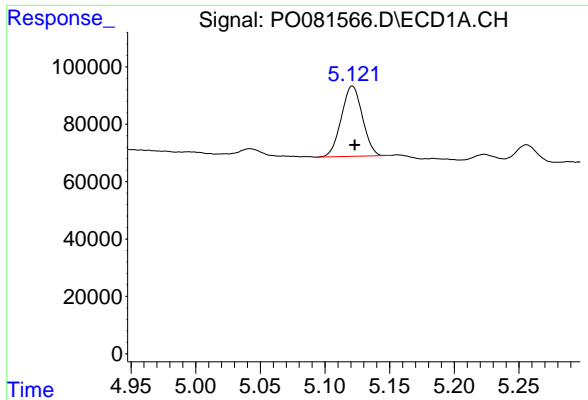
#7 AR-1016-5

R.T.: 6.703 min  
 Delta R.T.: -0.008 min  
 Response: 81477  
 Conc: 35.80 ng/ml



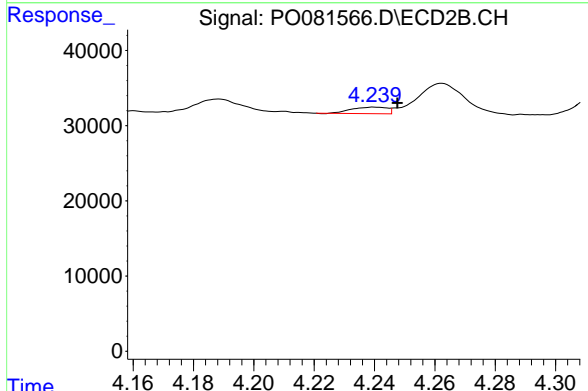
#7 AR-1016-5

R.T.: 5.753 min  
 Delta R.T.: -0.002 min  
 Response: 21071  
 Conc: 29.85 ng/ml

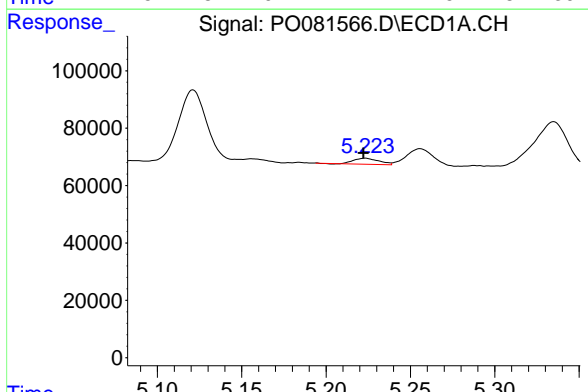


#8 AR-1221-1  
 R.T.: 5.121 min  
 Delta R.T.: -0.002 min  
 Response: 278314  
 Conc: 254.33 ng/ml

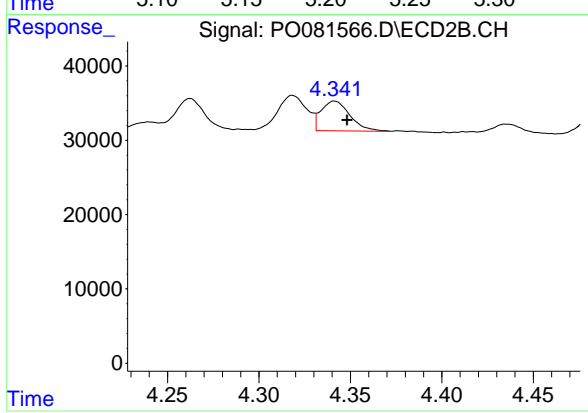
Instrument :  
 ECD\_O  
 ClientSampleId :



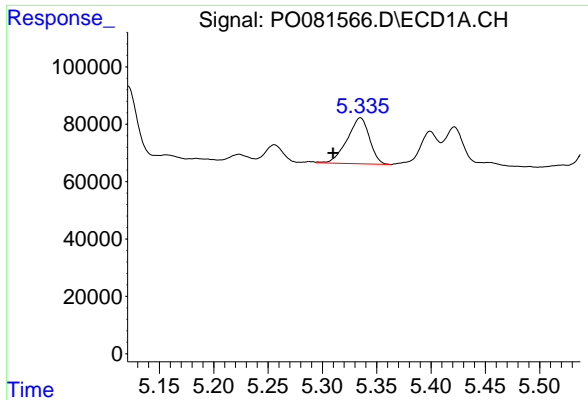
#8 AR-1221-1  
 R.T.: 4.240 min  
 Delta R.T.: -0.008 min  
 Response: 7216  
 Conc: 25.08 ng/ml



#9 AR-1221-2  
 R.T.: 5.223 min  
 Delta R.T.: 0.001 min  
 Response: 21889  
 Conc: 27.76 ng/ml



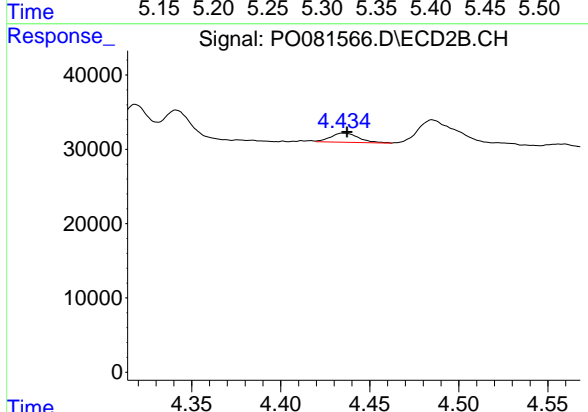
#9 AR-1221-2  
 R.T.: 4.341 min  
 Delta R.T.: -0.007 min  
 Response: 43827  
 Conc: 182.30 ng/ml



#10 AR-1221-3

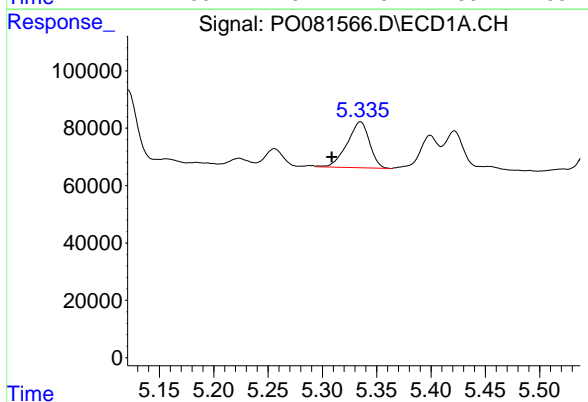
R.T.: 5.335 min  
 Delta R.T.: 0.025 min  
 Response: 229085  
 Conc: 91.05 ng/ml

Instrument :  
 ECD\_O  
 ClientSampleId :



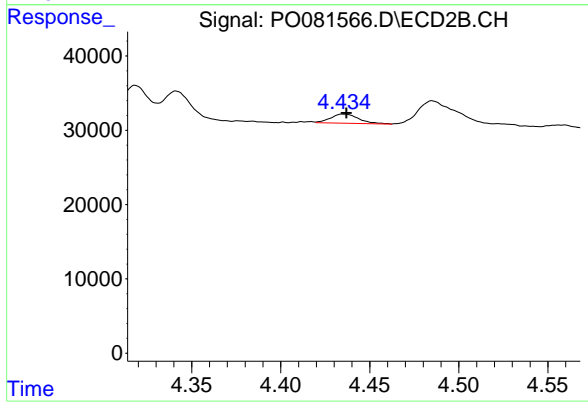
#10 AR-1221-3

R.T.: 4.435 min  
 Delta R.T.: -0.002 min  
 Response: 13481  
 Conc: 17.37 ng/ml



#11 AR-1232-1

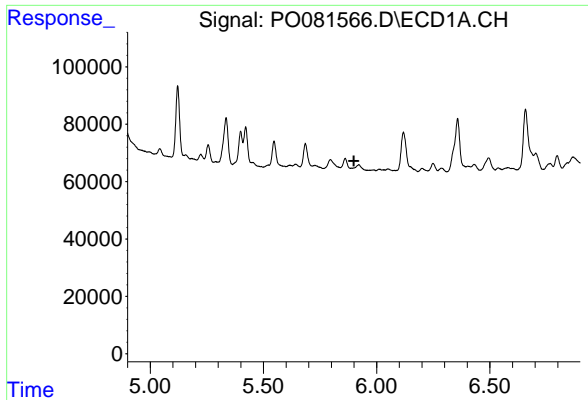
R.T.: 5.335 min  
 Delta R.T.: 0.026 min  
 Response: 229085  
 Conc: 117.54 ng/ml



#11 AR-1232-1

R.T.: 4.435 min  
 Delta R.T.: -0.002 min  
 Response: 13481  
 Conc: 22.48 ng/ml

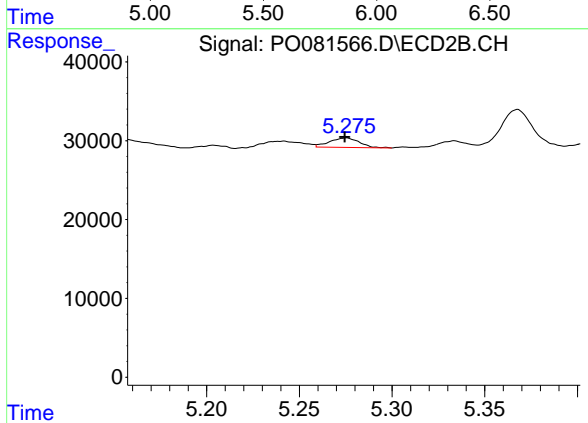




#12 AR-1232-2

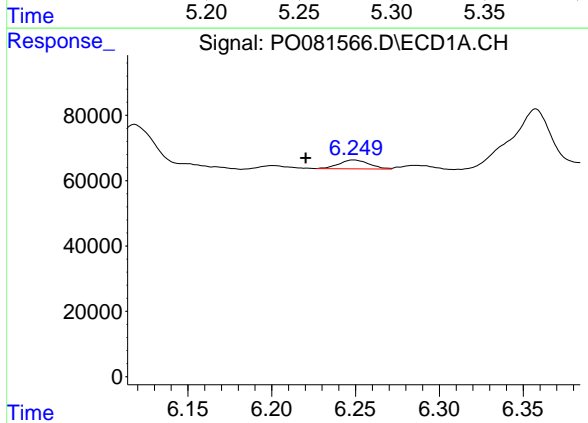
R.T.: 0.000 min  
 Exp R.T.: 5.899 min  
 Response: 0  
 Conc: N.D.

Instrument :  
 ECD\_O  
 ClientSampled :



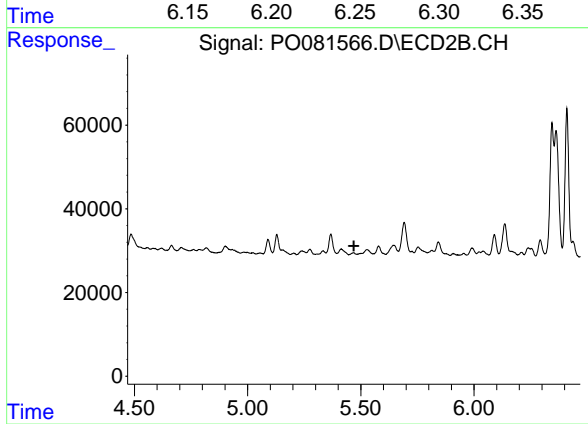
#12 AR-1232-2

R.T.: 5.276 min  
 Delta R.T.: 0.001 min  
 Response: 13455  
 Conc: 21.26 ng/ml



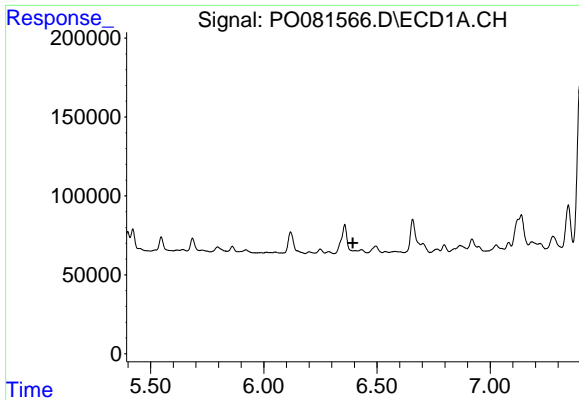
#13 AR-1232-3

R.T.: 6.249 min  
 Delta R.T.: 0.029 min  
 Response: 33896  
 Conc: 16.81 ng/ml



#13 AR-1232-3

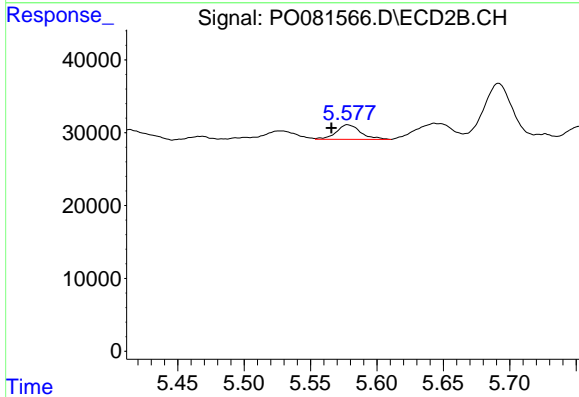
R.T.: 0.000 min  
 Exp R.T.: 5.469 min  
 Response: 0  
 Conc: N.D.



#14 AR-1232-4

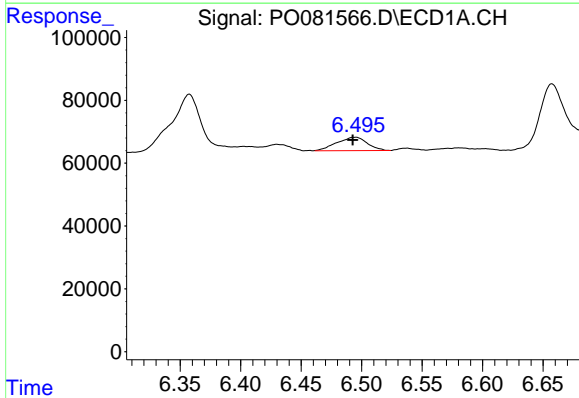
R.T.: 0.000 min  
 Exp R.T.: 6.394 min  
 Response: 0  
 Conc: N.D.

Instrument :  
 ECD\_O  
 ClientSampled :



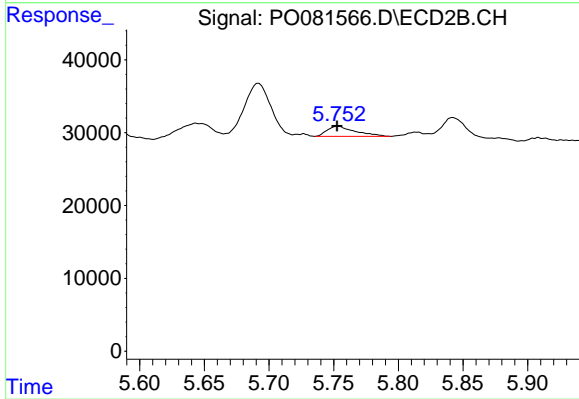
#14 AR-1232-4

R.T.: 5.578 min  
 Delta R.T.: 0.012 min  
 Response: 25447  
 Conc: 84.68 ng/ml



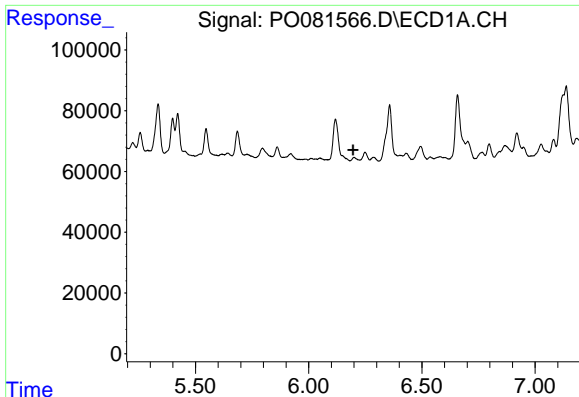
#15 AR-1232-5

R.T.: 6.494 min  
 Delta R.T.: 0.002 min  
 Response: 75189  
 Conc: 101.97 ng/ml



#15 AR-1232-5

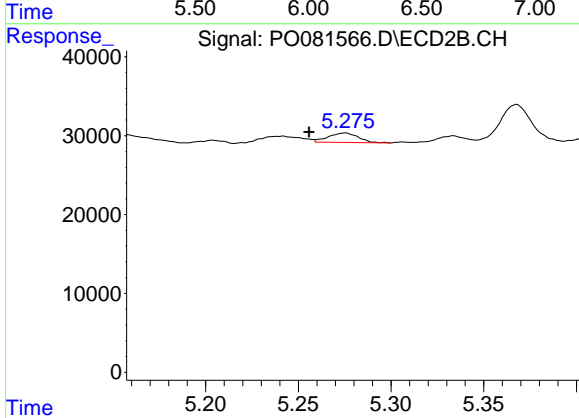
R.T.: 5.753 min  
 Delta R.T.: 0.000 min  
 Response: 21071  
 Conc: 66.29 ng/ml



#16 AR-1242-1

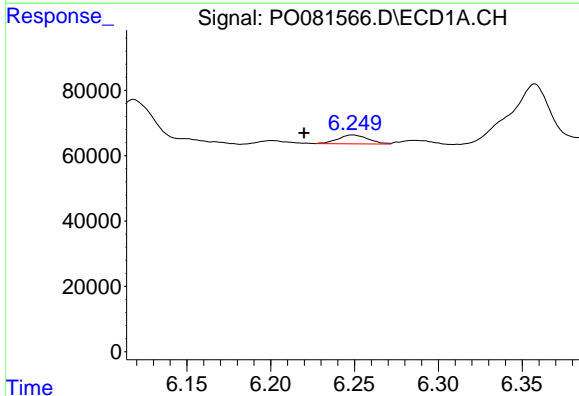
R.T.: 0.000 min  
 Exp R.T.: 6.196 min  
 Response: 0  
 Conc: N.D.

Instrument :  
 ECD\_O  
 ClientSampled :



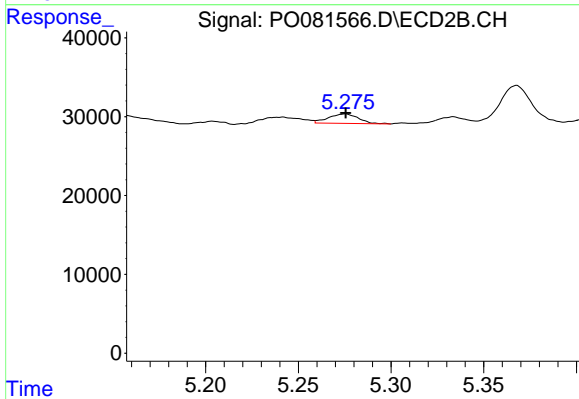
#16 AR-1242-1

R.T.: 5.276 min  
 Delta R.T.: 0.020 min  
 Response: 13455  
 Conc: 18.34 ng/ml



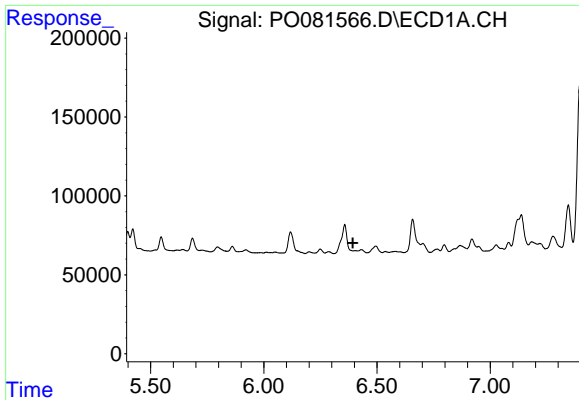
#17 AR-1242-2

R.T.: 6.249 min  
 Delta R.T.: 0.029 min  
 Response: 33896  
 Conc: 9.44 ng/ml



#17 AR-1242-2

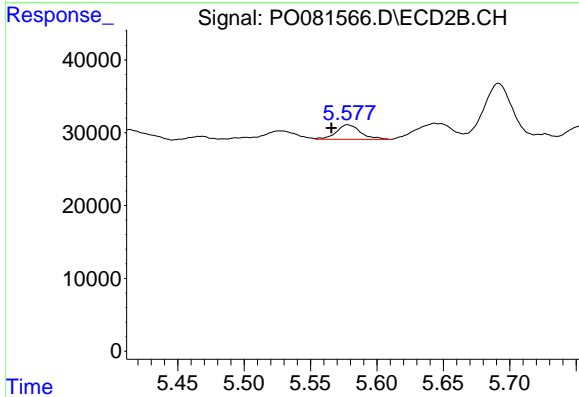
R.T.: 5.276 min  
 Delta R.T.: 0.000 min  
 Response: 13455  
 Conc: 12.22 ng/ml



#19 AR-1242-4

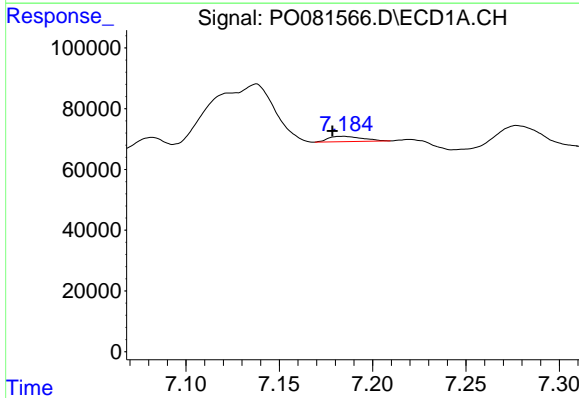
R.T.: 0.000 min  
 Exp R.T.: 6.393 min  
 Response: 0  
 Conc: N.D.

Instrument :  
 ECD\_O  
 ClientSampled :



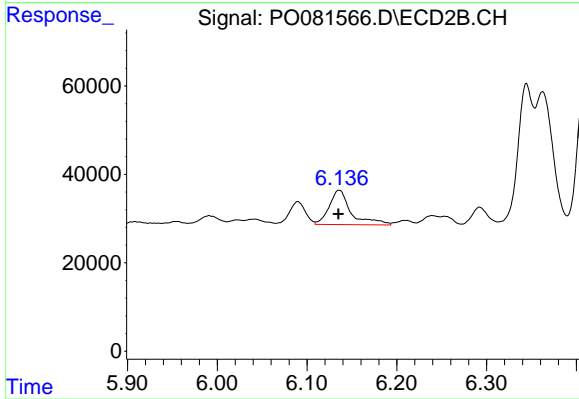
#19 AR-1242-4

R.T.: 5.578 min  
 Delta R.T.: 0.012 min  
 Response: 25447  
 Conc: 44.32 ng/ml



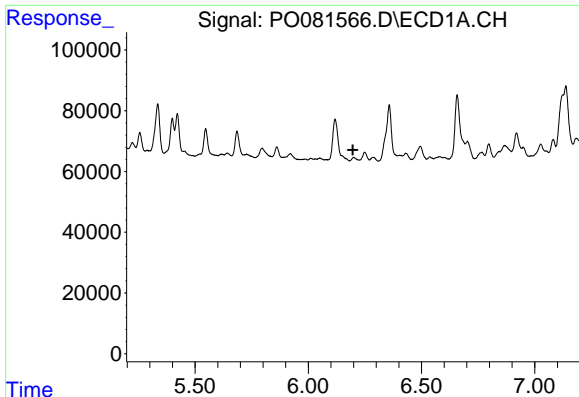
#20 AR-1242-5

R.T.: 7.184 min  
 Delta R.T.: 0.006 min  
 Response: 22495  
 Conc: 11.41 ng/ml



#20 AR-1242-5

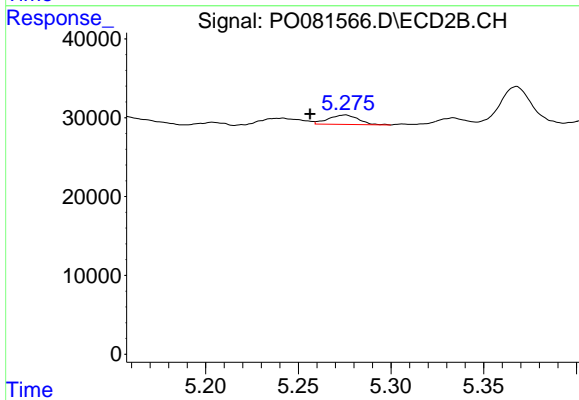
R.T.: 6.136 min  
 Delta R.T.: 0.001 min  
 Response: 132311  
 Conc: 177.06 ng/ml



#21 AR-1248-1

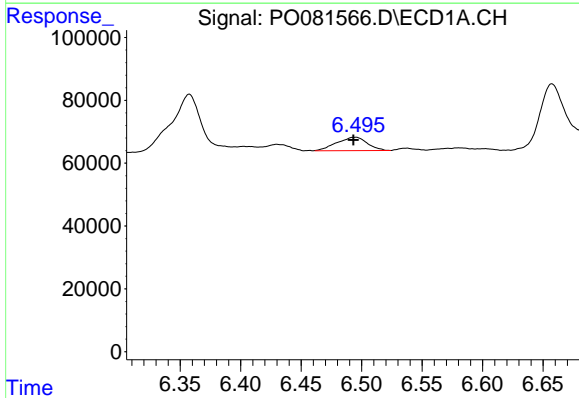
R.T.: 0.000 min  
 Exp R.T.: 6.197 min  
 Response: 0  
 Conc: N.D.

Instrument :  
 ECD\_O  
 ClientSampleId :



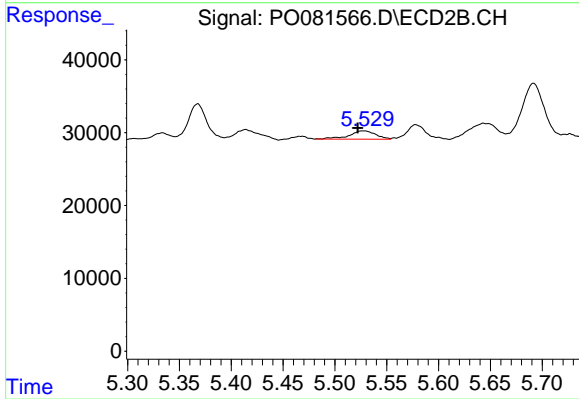
#21 AR-1248-1

R.T.: 5.276 min  
 Delta R.T.: 0.019 min  
 Response: 13455  
 Conc: 22.48 ng/ml



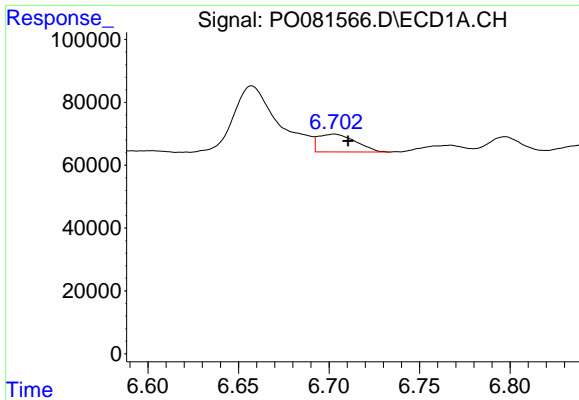
#22 AR-1248-2

R.T.: 6.494 min  
 Delta R.T.: 0.001 min  
 Response: 75189  
 Conc: 28.51 ng/ml



#22 AR-1248-2

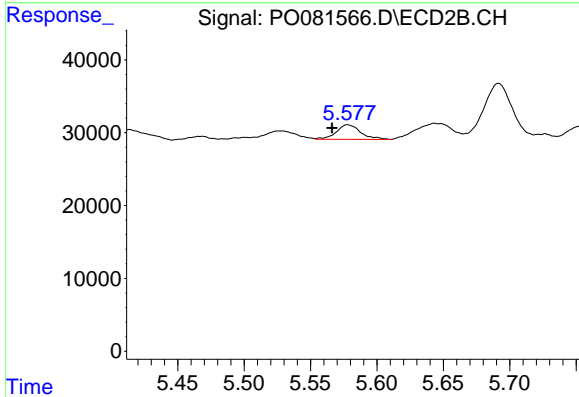
R.T.: 5.529 min  
 Delta R.T.: 0.007 min  
 Response: 20464  
 Conc: 23.06 ng/ml



#23 AR-1248-3

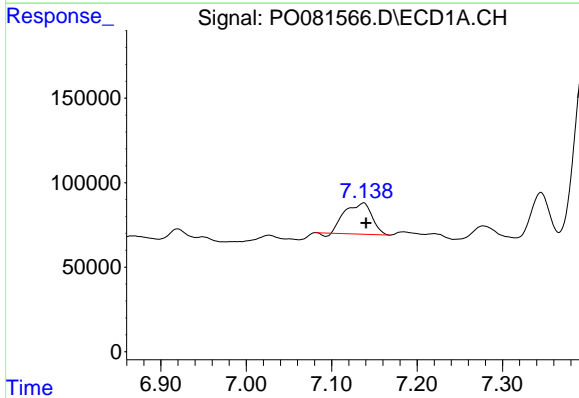
R.T.: 6.703 min  
 Delta R.T.: -0.008 min  
 Response: 81477  
 Conc: 26.03 ng/ml

Instrument :  
 ECD\_O  
 ClientSampled :



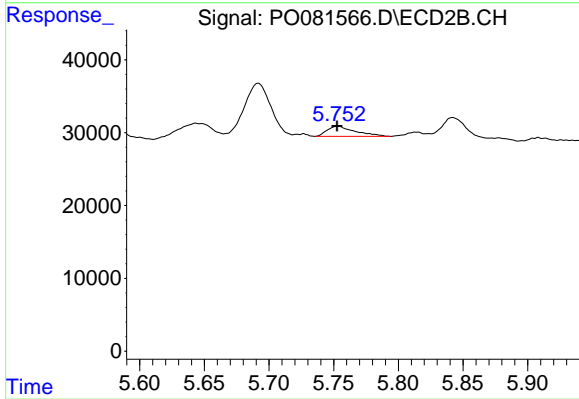
#23 AR-1248-3

R.T.: 5.578 min  
 Delta R.T.: 0.012 min  
 Response: 25447  
 Conc: 29.11 ng/ml



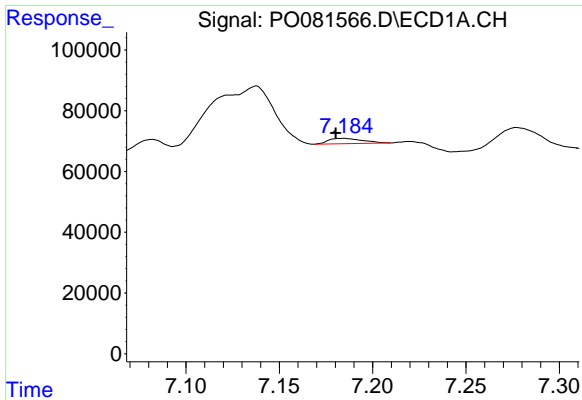
#24 AR-1248-4

R.T.: 7.138 min  
 Delta R.T.: -0.003 min  
 Response: 402060  
 Conc: 116.74 ng/ml



#24 AR-1248-4

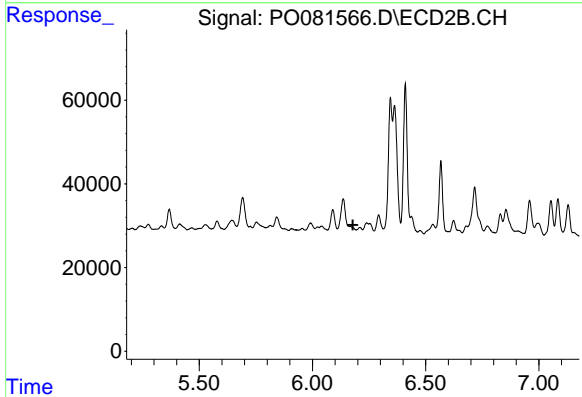
R.T.: 5.753 min  
 Delta R.T.: 0.000 min  
 Response: 21071  
 Conc: 20.74 ng/ml



#25 AR-1248-5

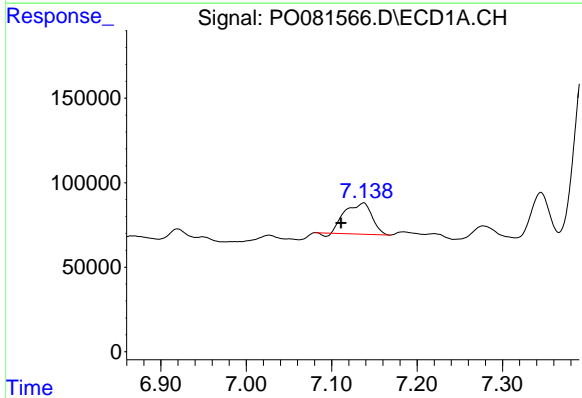
R.T.: 7.184 min  
 Delta R.T.: 0.004 min  
 Response: 22495  
 Conc: 6.65 ng/ml

Instrument :  
 ECD\_O  
 ClientSampled :



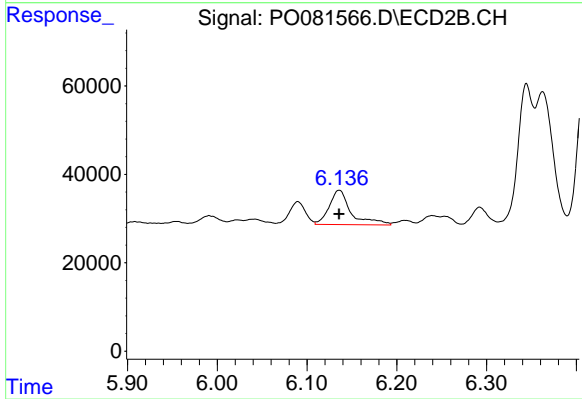
#25 AR-1248-5

R.T.: 0.000 min  
 Exp R.T. : 6.179 min  
 Response: 0  
 Conc: N.D.



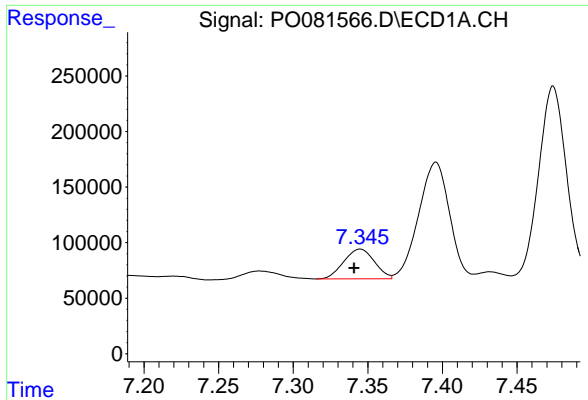
#26 AR-1254-1

R.T.: 7.138 min  
 Delta R.T.: 0.027 min  
 Response: 402060  
 Conc: 112.14 ng/ml



#26 AR-1254-1

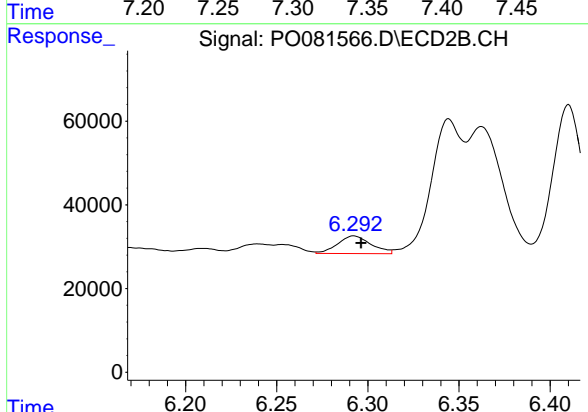
R.T.: 6.136 min  
 Delta R.T.: 0.000 min  
 Response: 132311  
 Conc: 86.41 ng/ml



#27 AR-1254-2

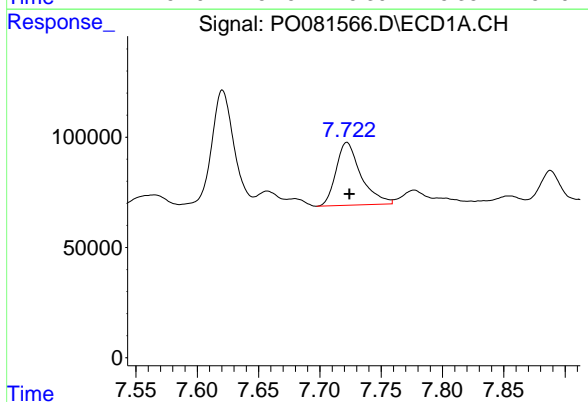
R.T.: 7.345 min  
 Delta R.T.: 0.004 min  
 Response: 382532  
 Conc: 69.38 ng/ml

Instrument :  
 ECD\_O  
 ClientSampled :



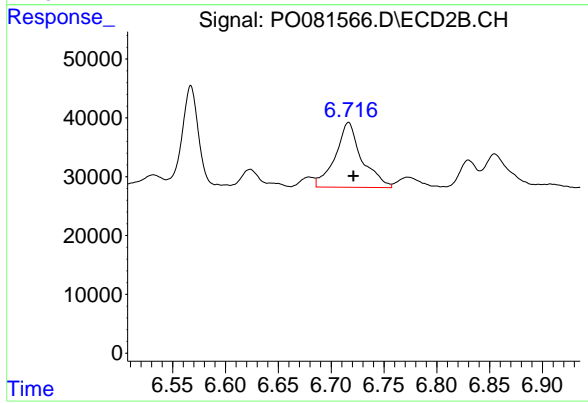
#27 AR-1254-2

R.T.: 6.292 min  
 Delta R.T.: -0.004 min  
 Response: 53588  
 Conc: 39.39 ng/ml



#28 AR-1254-3

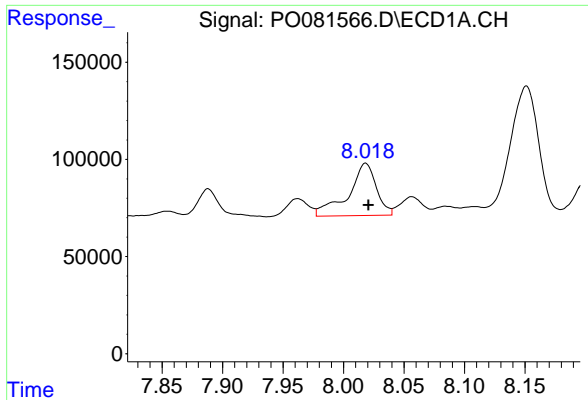
R.T.: 7.722 min  
 Delta R.T.: -0.002 min  
 Response: 403821  
 Conc: 71.57 ng/ml



#28 AR-1254-3

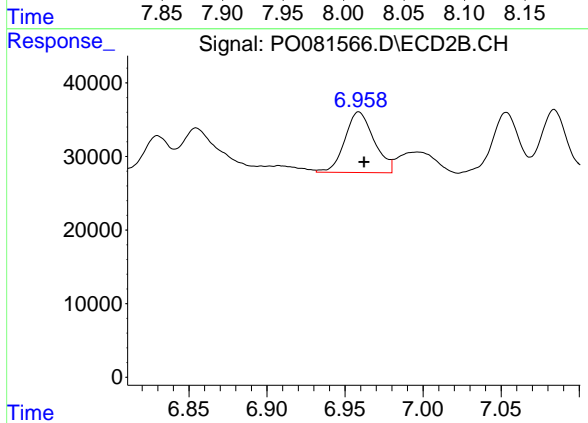
R.T.: 6.716 min  
 Delta R.T.: -0.005 min  
 Response: 191975  
 Conc: 96.51 ng/ml



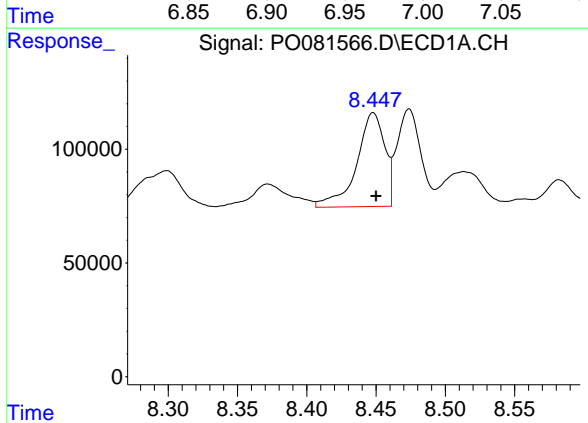


#29 AR-1254-4  
 R.T.: 8.018 min  
 Delta R.T.: -0.002 min  
 Response: 433290  
 Conc: 105.37 ng/ml

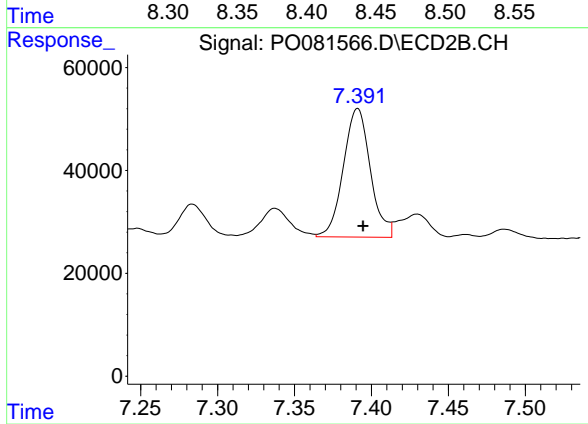
Instrument :  
 ECD\_O  
 ClientSampleId :



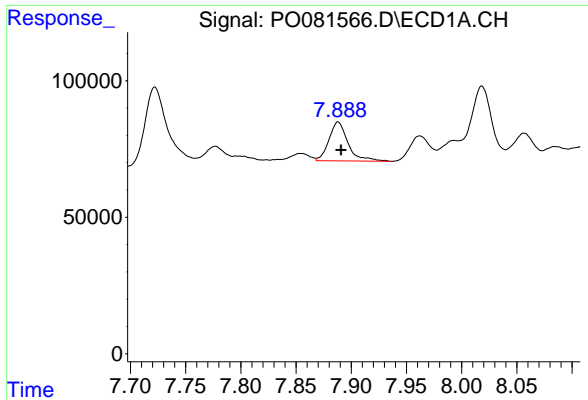
#29 AR-1254-4  
 R.T.: 6.959 min  
 Delta R.T.: -0.003 min  
 Response: 107111  
 Conc: 85.78 ng/ml



#30 AR-1254-5  
 R.T.: 8.448 min  
 Delta R.T.: -0.002 min  
 Response: 581058  
 Conc: 126.06 ng/ml

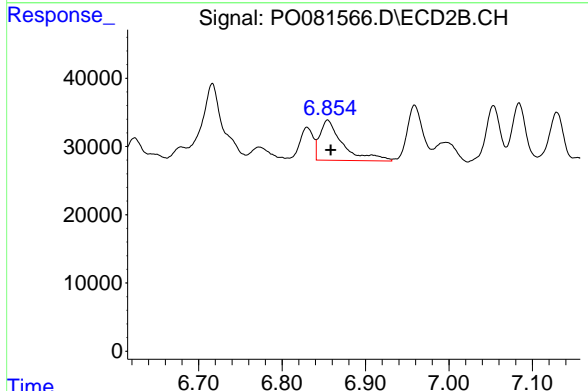


#30 AR-1254-5  
 R.T.: 7.391 min  
 Delta R.T.: -0.004 min  
 Response: 304376  
 Conc: 162.82 ng/ml

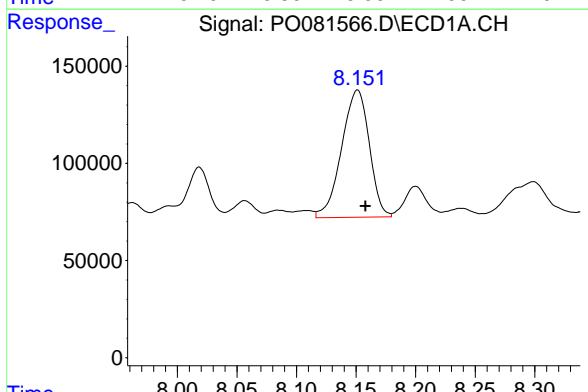


#31 AR-1260-1  
 R.T.: 7.888 min  
 Delta R.T.: -0.003 min  
 Response: 171873  
 Conc: 40.66 ng/ml

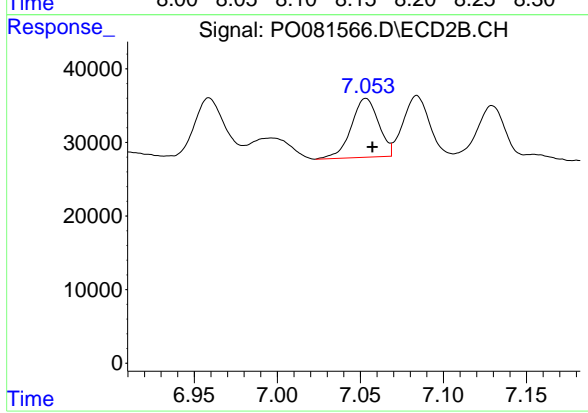
Instrument :  
 ECD\_O  
 ClientSampleId :



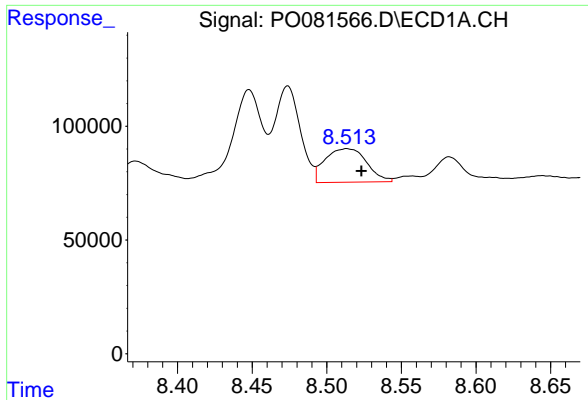
#31 AR-1260-1  
 R.T.: 6.855 min  
 Delta R.T.: -0.004 min  
 Response: 112795  
 Conc: 80.80 ng/ml



#32 AR-1260-2  
 R.T.: 8.151 min  
 Delta R.T.: -0.006 min  
 Response: 1059559  
 Conc: 204.14 ng/ml

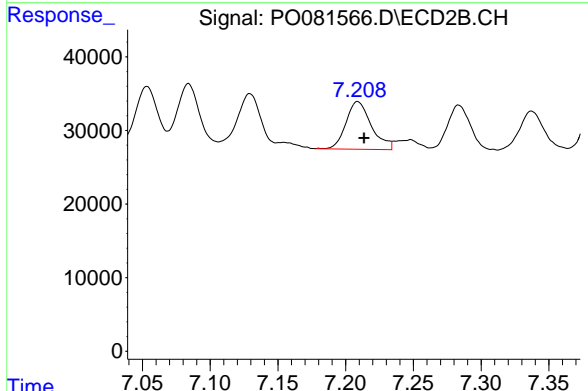


#32 AR-1260-2  
 R.T.: 7.053 min  
 Delta R.T.: -0.004 min  
 Response: 91830  
 Conc: 56.19 ng/ml

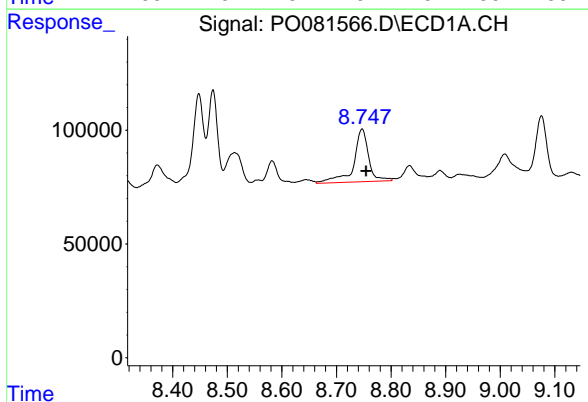


#33 AR-1260-3  
 R.T.: 8.514 min  
 Delta R.T.: -0.010 min  
 Response: 286608  
 Conc: 88.45 ng/ml

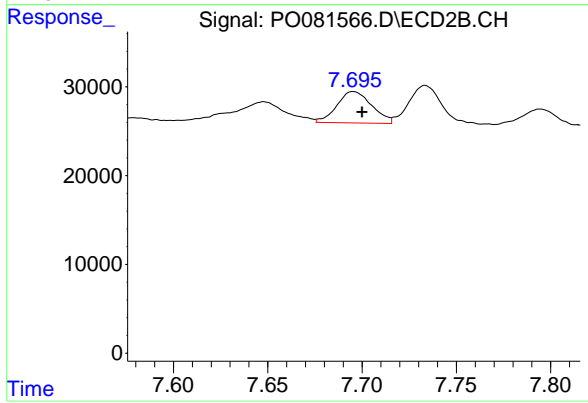
Instrument :  
 ECD\_O  
 ClientSampleId :



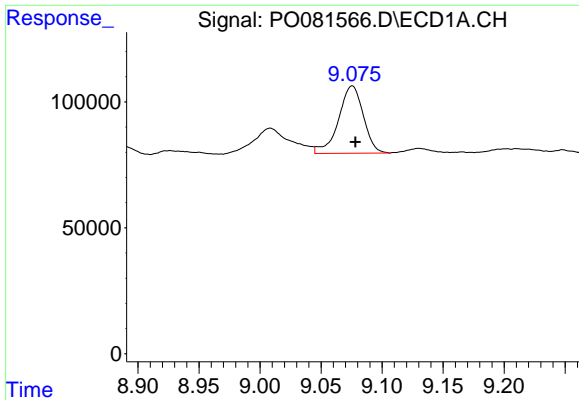
#33 AR-1260-3  
 R.T.: 7.209 min  
 Delta R.T.: -0.005 min  
 Response: 84473  
 Conc: 50.80 ng/ml



#34 AR-1260-4  
 R.T.: 8.747 min  
 Delta R.T.: -0.007 min  
 Response: 440679  
 Conc: 110.56 ng/ml



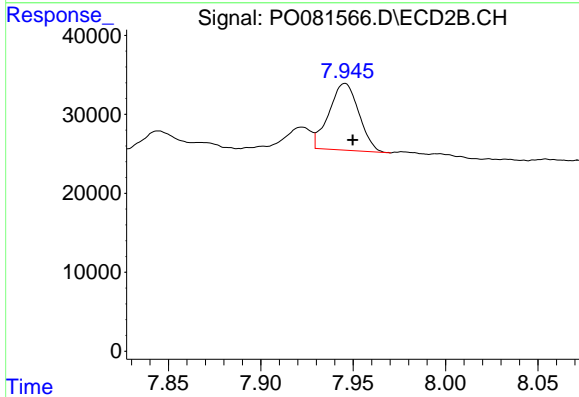
#34 AR-1260-4  
 R.T.: 7.695 min  
 Delta R.T.: -0.005 min  
 Response: 45662  
 Conc: 41.08 ng/ml



#35 AR-1260-5

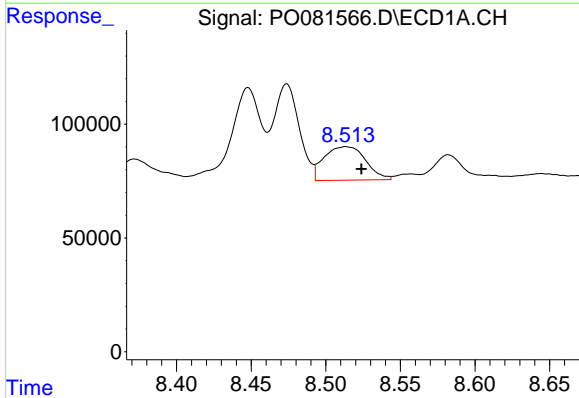
R.T.: 9.076 min  
 Delta R.T.: -0.003 min  
 Response: 377825  
 Conc: 51.00 ng/ml

Instrument :  
 ECD\_O  
 ClientSampleId :



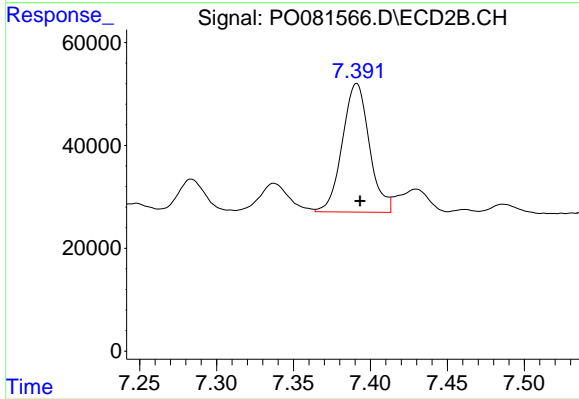
#35 AR-1260-5

R.T.: 7.946 min  
 Delta R.T.: -0.004 min  
 Response: 95264  
 Conc: 38.57 ng/ml



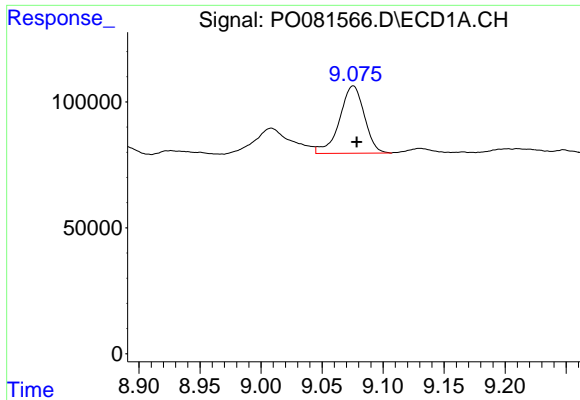
#36 AR-1262-1

R.T.: 8.514 min  
 Delta R.T.: -0.010 min  
 Response: 286608  
 Conc: 55.29 ng/ml



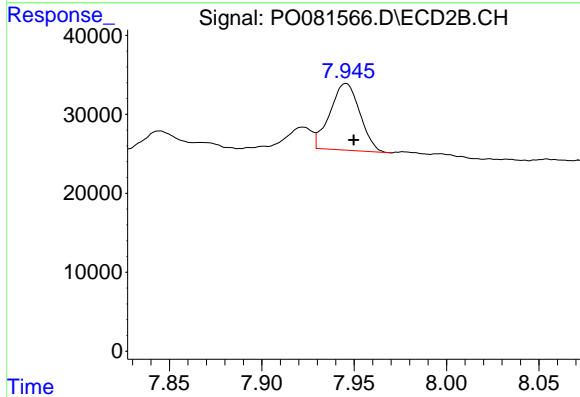
#36 AR-1262-1

R.T.: 7.391 min  
 Delta R.T.: -0.002 min  
 Response: 304376  
 Conc: 305.80 ng/ml

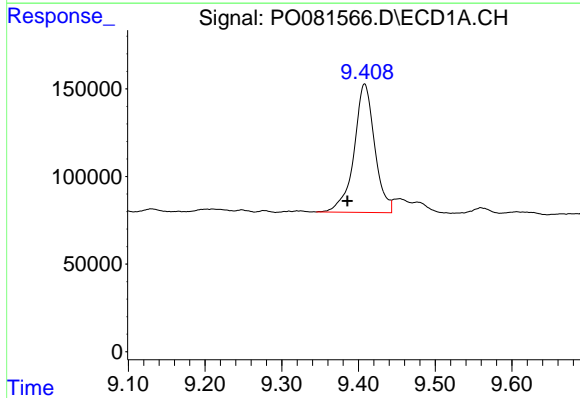


#37 AR-1262-2  
 R.T.: 9.076 min  
 Delta R.T.: -0.003 min  
 Response: 377825  
 Conc: 42.36 ng/ml

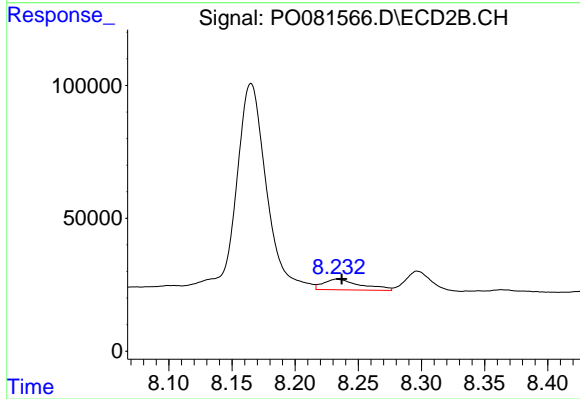
Instrument :  
 ECD\_O  
 ClientSampleId :



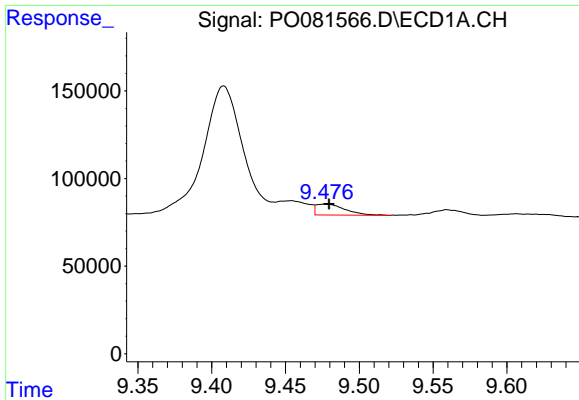
#37 AR-1262-2  
 R.T.: 7.946 min  
 Delta R.T.: -0.004 min  
 Response: 95264  
 Conc: 31.09 ng/ml



#38 AR-1262-3  
 R.T.: 9.408 min  
 Delta R.T.: 0.023 min  
 Response: 1376299  
 Conc: 343.07 ng/ml

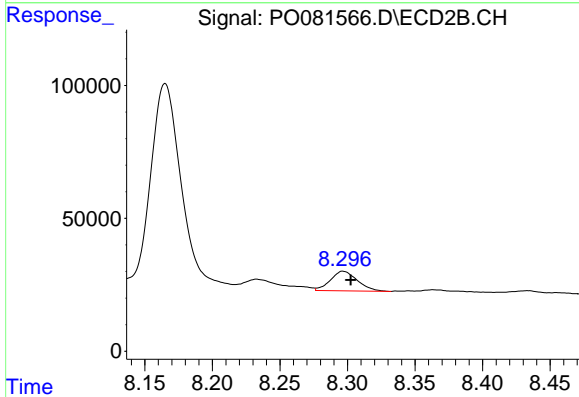


#38 AR-1262-3  
 R.T.: 8.233 min  
 Delta R.T.: -0.004 min  
 Response: 82390  
 Conc: 61.56 ng/ml

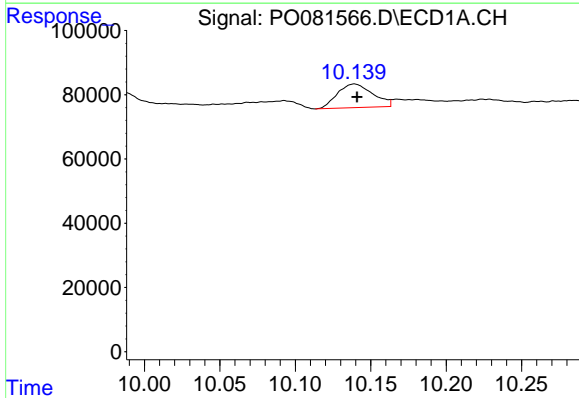


#39 AR-1262-4  
 R.T.: 9.477 min  
 Delta R.T.: -0.003 min  
 Response: 84717  
 Conc: 34.66 ng/ml

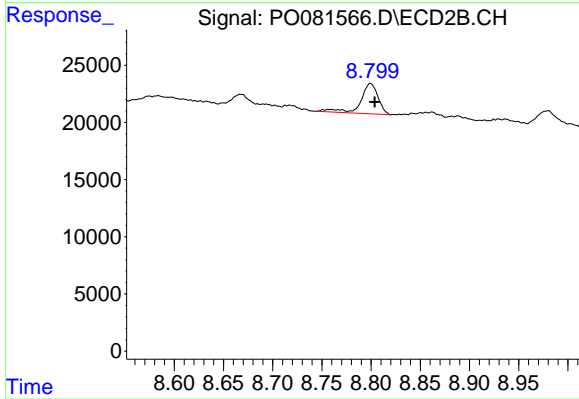
Instrument :  
 ECD\_O  
 ClientSampled :



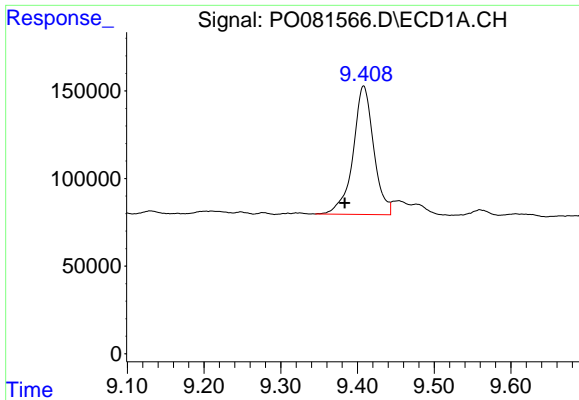
#39 AR-1262-4  
 R.T.: 8.297 min  
 Delta R.T.: -0.006 min  
 Response: 102563  
 Conc: 43.59 ng/ml



#40 AR-1262-5  
 R.T.: 10.139 min  
 Delta R.T.: -0.002 min  
 Response: 120327  
 Conc: 35.31 ng/ml

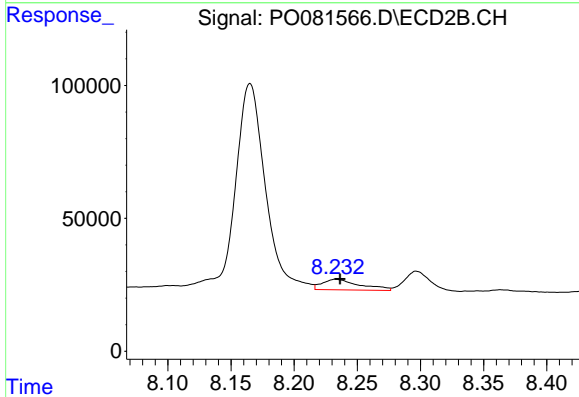


#40 AR-1262-5  
 R.T.: 8.799 min  
 Delta R.T.: -0.004 min  
 Response: 32695  
 Conc: 28.75 ng/ml

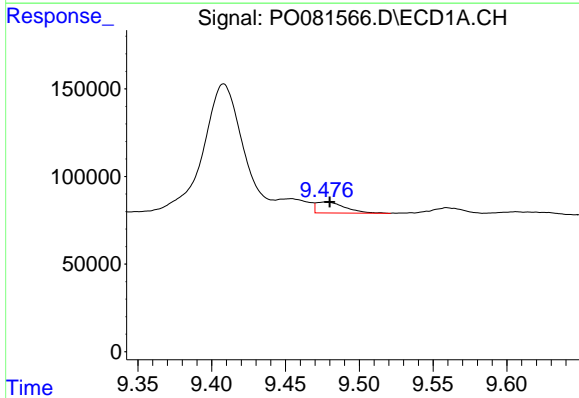


#41 AR-1268-1  
 R.T.: 9.408 min  
 Delta R.T.: 0.025 min  
 Response: 1376299  
 Conc: 128.21 ng/ml

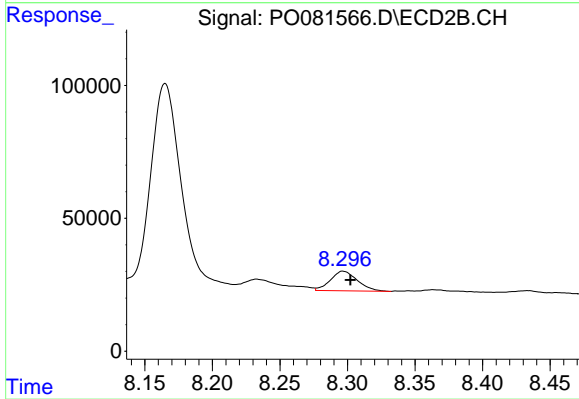
Instrument :  
 ECD\_O  
 ClientSampleId :



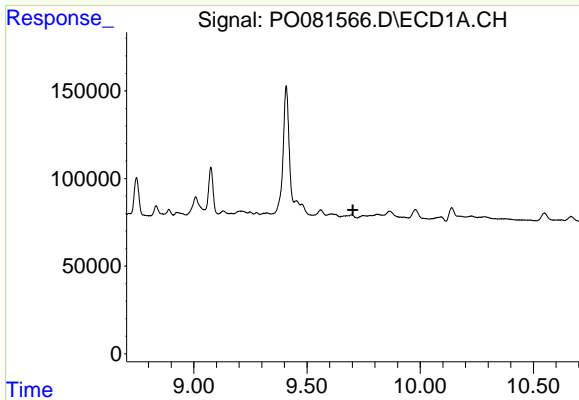
#41 AR-1268-1  
 R.T.: 8.233 min  
 Delta R.T.: -0.003 min  
 Response: 82390  
 Conc: 21.48 ng/ml



#42 AR-1268-2  
 R.T.: 9.477 min  
 Delta R.T.: -0.003 min  
 Response: 84717  
 Conc: 8.38 ng/ml



#42 AR-1268-2  
 R.T.: 8.297 min  
 Delta R.T.: -0.005 min  
 Response: 102563  
 Conc: 29.45 ng/ml

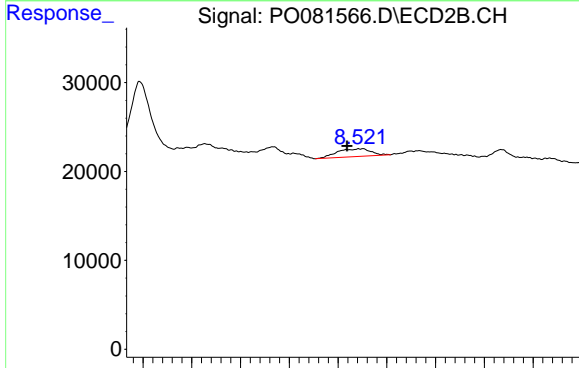


#43 AR-1268-3

R.T.: 0.000 min  
 Exp R.T.: 9.703 min  
 Response: 0  
 Conc: N.D.

Instrument :  
 ECD\_O  
 ClientSampleId :

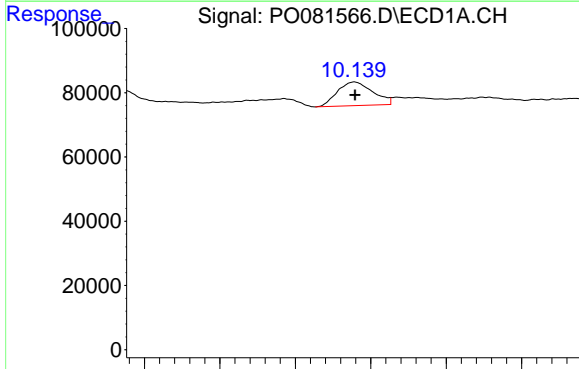
Time 9.00 9.50 10.00 10.50



#43 AR-1268-3

R.T.: 8.526 min  
 Delta R.T.: 0.016 min  
 Response: 21302  
 Conc: 6.78 ng/ml

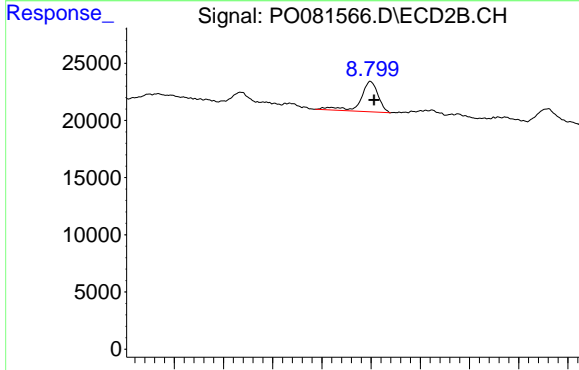
Time 8.30 8.35 8.40 8.45 8.50 8.55 8.60 8.65 8.70



#44 AR-1268-4

R.T.: 10.139 min  
 Delta R.T.: 0.000 min  
 Response: 120327  
 Conc: 31.34 ng/ml

Time 10.00 10.05 10.10 10.15 10.20 10.25

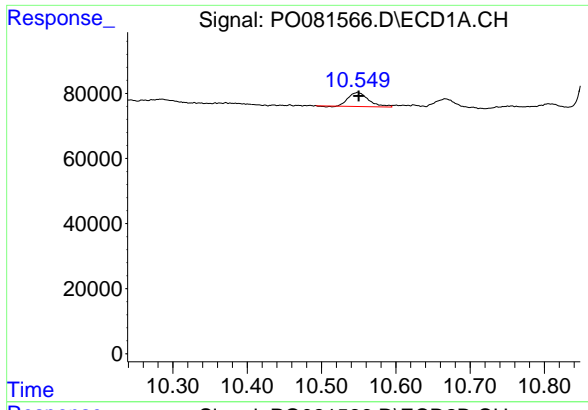


#44 AR-1268-4

R.T.: 8.799 min  
 Delta R.T.: -0.004 min  
 Response: 32695  
 Conc: 25.36 ng/ml

Time 8.60 8.65 8.70 8.75 8.80 8.85 8.90 8.95

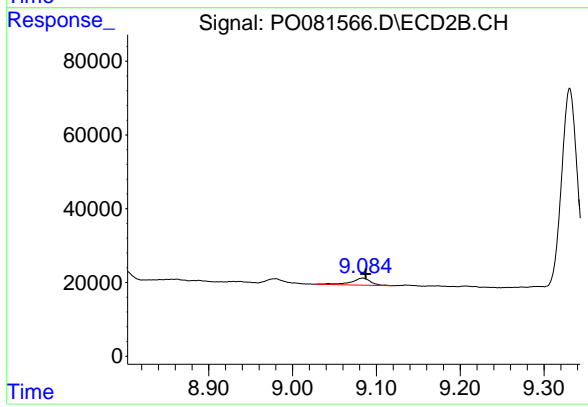




#45 AR-1268-5

R.T.: 10.549 min  
Delta R.T.: -0.002 min  
Response: 81434  
Conc: 2.89 ng/ml

Instrument :  
ECD\_O  
ClientSampleId :



#45 AR-1268-5

R.T.: 9.084 min  
Delta R.T.: -0.004 min  
Response: 31215  
Conc: 3.47 ng/ml