

Data Path : Z:\pestpcbsrv\HPCHEM1\ECD_0\Data\P0092721\
 Data File : P0081574.D
 Signal(s) : Signal #1: ECD1A.CH Signal #2: ECD2B.CH
 Acq On : 27 Sep 2021 13:48
 Operator : AJ\MA
 Sample : M3935-04
 Misc :
 ALS Vial : 16 Sample Multiplier: 1

Instrument :
 ECD_0
 ClientSampled :

Integration File signal 1: autoint1.e
 Integration File signal 2: autoint2.e
 Quant Time: Sep 28 03:11:27 2021
 Quant Method : Z:\pestpcbsrv\HPCHEM1\ECD_0\methods\P0092321.M
 Quant Title : GC EXTRACTABLES
 QLast Update : Fri Sep 24 02:21:54 2021
 Response via : Initial Calibration
 Integrator: ChemStation 6890 Scale Mode: Small noise peaks clipped

Volume Inj. : 2 µl
 Signal #1 Phase : ZB-MR1 Signal #2 Phase: ZB-MR2
 Signal #1 Info : 30Mx0.32mmx 0.50µ Signal #2 Info : 30M x 0.32mm x 0.25µm

Compound	RT#1	RT#2	Resp#1	Resp#2	ng/ml	ng/ml
System Monitoring Compounds						
1) SA Tetrachlo...	4.869	3.985	2266040	668418	25.411	25.089
2) SA Decachlor...	10.880	9.332	1619862	506724	21.747	21.820
Target Compounds						
4) L1 AR-1016-2	6.248f	0.000	59977	0	12.939	N.D. #
5) L1 AR-1016-3	6.290	5.465	42542	18543	14.859	26.155 #
6) L1 AR-1016-4	0.000	5.520	0	14904	N.D.	24.062 #
7) L1 AR-1016-5	6.704	0.000	128495	0	56.464	N.D. #
8) L2 AR-1221-1	5.121	0.000	153205	0	140.004	N.D. #
9) L2 AR-1221-2	5.225	0.000	24992	0	31.698	N.D. #
13) L3 AR-1232-3	6.248f	5.465	59977	18543	29.753	58.398 #
14) L3 AR-1232-4	0.000	5.573	0	35813	N.D.	119.179 #
15) L3 AR-1232-5	6.489	0.000	68025	0	92.258	N.D. #
17) L4 AR-1242-2	6.248f	0.000	59977	0	16.702	N.D. #
18) L4 AR-1242-3	6.290	5.465	42542	18543	18.643	33.077 #
19) L4 AR-1242-4	0.000	5.573	0	35813	N.D.	62.370 #
20) L4 AR-1242-5	7.181	6.135	94566	164484	47.954	220.112 #
22) L5 AR-1248-2	6.489	5.520	68025	14904	25.791	16.796 #
23) L5 AR-1248-3	6.704	5.573	128495	35813	41.055	40.963
24) L5 AR-1248-4	7.116f	0.000	605189	0	175.713	N.D. #
25) L5 AR-1248-5	7.181	6.208f	94566	21418	27.971	22.192
26) L6 AR-1254-1	7.116	6.135	605189	164484	168.789	107.418 #
27) L6 AR-1254-2	7.342	6.292	621591	103438	112.732	76.027 #
28) L6 AR-1254-3	7.722	6.718	472840	130875	83.799	65.794
29) L6 AR-1254-4	8.019	6.959	442536	98292	107.619	78.720 #
30) L6 AR-1254-5	8.448	7.391	643109	159728	139.522	85.443 #
31) L7 AR-1260-1	7.888	6.855	330335	95010	78.144	68.058
32) L7 AR-1260-2	8.155	7.053	436063	106103	84.013	64.922
33) L7 AR-1260-3	8.520	7.209	360656	94584	111.306	56.879 #
34) L7 AR-1260-4	8.745	7.695	313151	25929	78.562	23.329 #
35) L7 AR-1260-5	9.076	7.946	134332	39843	18.133	16.133
36) L8 AR-1262-1	8.520	7.391	360656	159728	69.579	160.474 #
37) L8 AR-1262-2	9.076	7.946	134332	39843	15.061	13.005
38) L8 AR-1262-3	9.382	8.234	115638	32877	28.825	24.566
39) L8 AR-1262-4	9.475	8.298	123987	54458	50.726	23.143 #
40) L8 AR-1262-5	10.137	8.801	73765	29485	21.648	25.929
41) L9 AR-1268-1	9.382	8.234	115638	32877	10.772	8.573
42) L9 AR-1268-2	9.475	8.298	123987	54458	12.269	15.639 #
43) L9 AR-1268-3	9.699	8.506	38517	16665	4.496	5.308
44) L9 AR-1268-4	10.137	8.801	73765	29485	19.211	22.866
45) L9 AR-1268-5	10.547	9.084	156608	48761	5.552	5.424

Data Path : Z:\pestpcbsrv\HPCHEM1\ECD_0\Data\P0092721\
Data File : P0081574.D
Signal(s) : Signal #1: ECD1A.CH Signal #2: ECD2B.CH
Acq On : 27 Sep 2021 13:48
Operator : AJ\MA
Sample : M3935-04
Misc :
ALS Vial : 16 Sample Multiplier: 1

Instrument :
ECD_0
ClientSampleId :

Integration File signal 1: autoint1.e
Integration File signal 2: autoint2.e
Quant Time: Sep 28 03:11:27 2021
Quant Method : Z:\pestpcbsrv\HPCHEM1\ECD_0\methods\P0092321.M
Quant Title : GC EXTRACTABLES
QLast Update : Fri Sep 24 02:21:54 2021
Response via : Initial Calibration
Integrator: ChemStation 6890 Scale Mode: Small noise peaks clipped

Volume Inj. : 2 µl
Signal #1 Phase : ZB-MR1 Signal #2 Phase: ZB-MR2
Signal #1 Info : 30Mx0.32mmx 0.50µ Signal #2 Info : 30M x 0.32mm x 0.25µm

Compound	RT#1	RT#2	Resp#1	Resp#2	ng/ml	ng/ml
----------	------	------	--------	--------	-------	-------

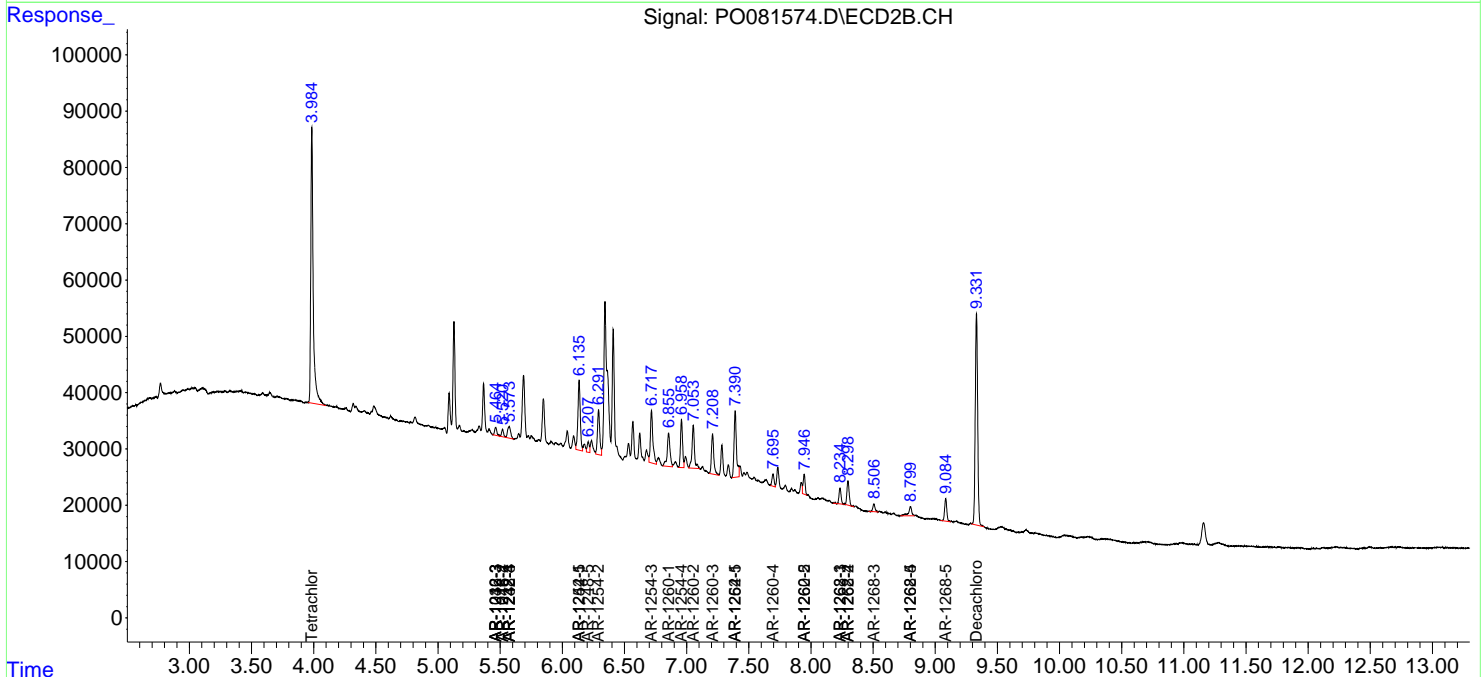
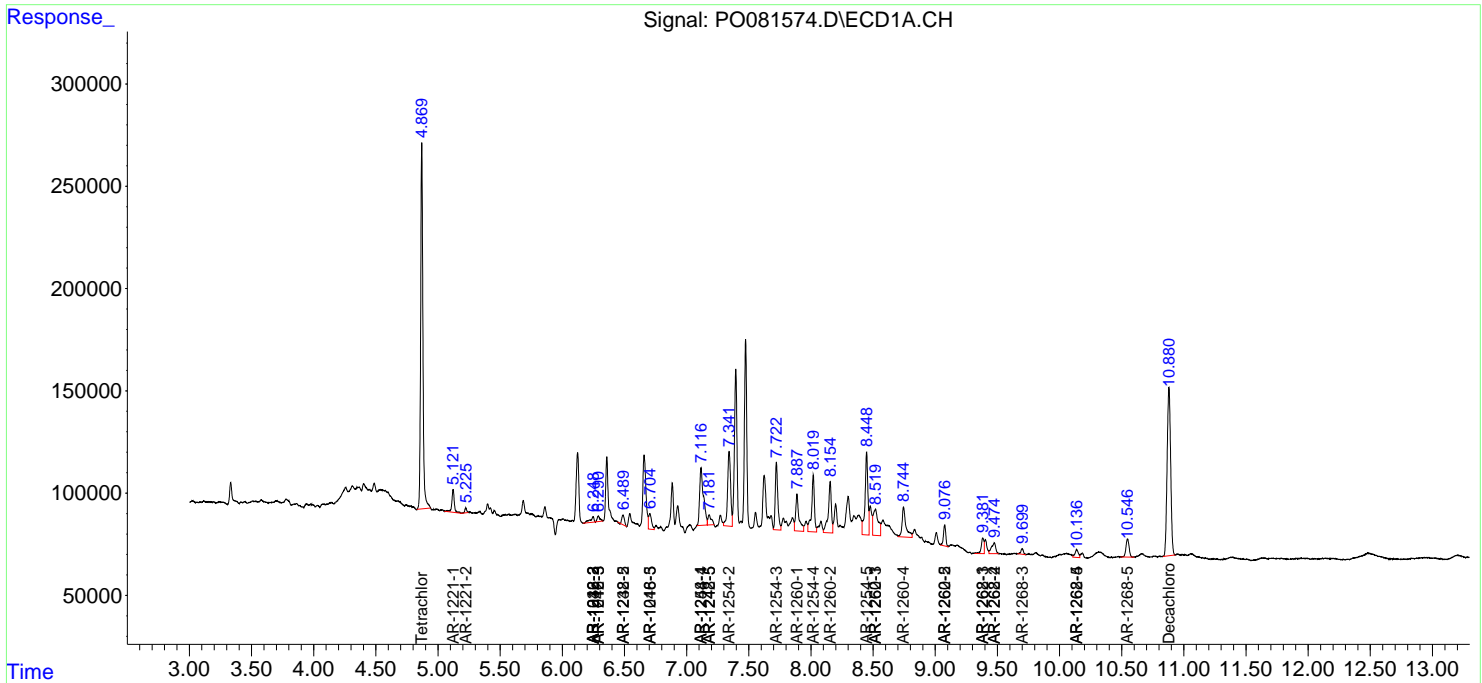
(f)=RT Delta > 1/2 Window (#)=Amounts differ by > 25% (m)=manual int.

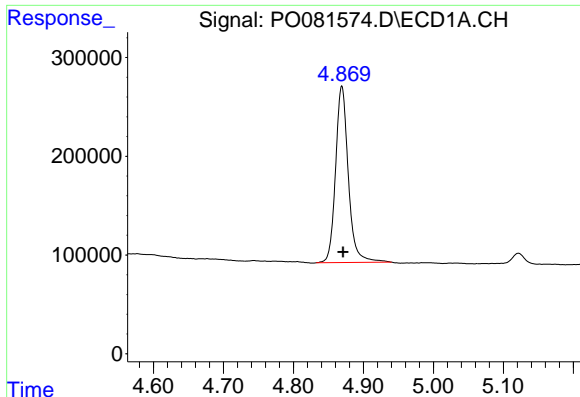
Data Path : Z:\pestpcbsrv\HPCHEM1\ECD_O\Data\P0092721\
 Data File : P0081574.D
 Signal(s) : Signal #1: ECD1A.CH Signal #2: ECD2B.CH
 Acq On : 27 Sep 2021 13:48
 Operator : AJ\MA
 Sample : M3935-04
 Misc :
 ALS Vial : 16 Sample Multiplier: 1

Instrument :
 ECD_O
 ClientSampled :

Integration File signal 1: autoint1.e
 Integration File signal 2: autoint2.e
 Quant Time: Sep 28 03:11:27 2021
 Quant Method : Z:\pestpcbsrv\HPCHEM1\ECD_O\methods\P0092321.M
 Quant Title : GC EXTRACTABLES
 QLast Update : Fri Sep 24 02:21:54 2021
 Response via : Initial Calibration
 Integrator: ChemStation 6890 Scale Mode: Small noise peaks clipped

Volume Inj. : 2 µl
 Signal #1 Phase : ZB-MR1 Signal #2 Phase: ZB-MR2
 Signal #1 Info : 30Mx0.32mmx 0.50µ Signal #2 Info : 30M x 0.32mm x 0.25µm

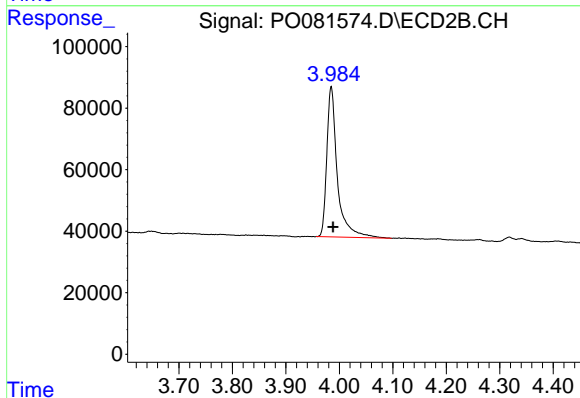




#1 Tetrachloro-m-xylene

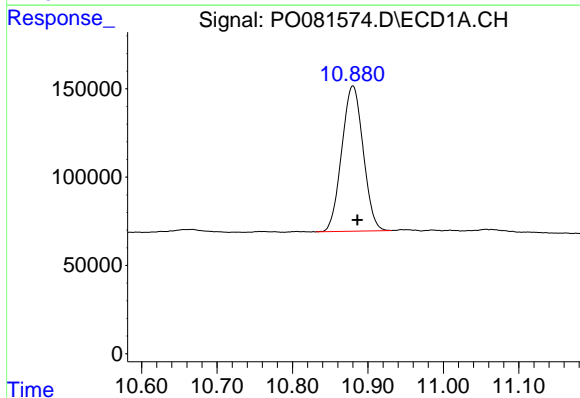
R.T.: 4.869 min
 Delta R.T.: -0.002 min
 Response: 2266040
 Conc: 25.41 ng/ml

Instrument :
 ECD_O
 ClientSampleId :



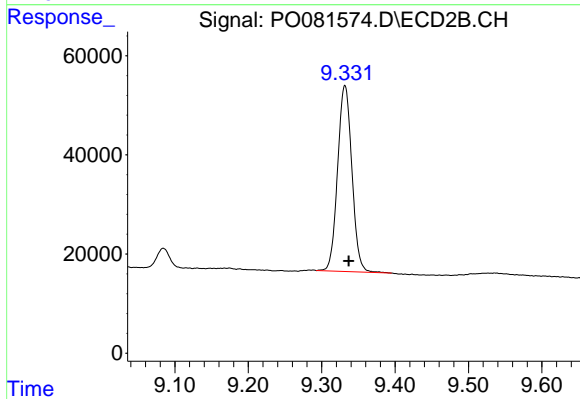
#1 Tetrachloro-m-xylene

R.T.: 3.985 min
 Delta R.T.: -0.004 min
 Response: 668418
 Conc: 25.09 ng/ml



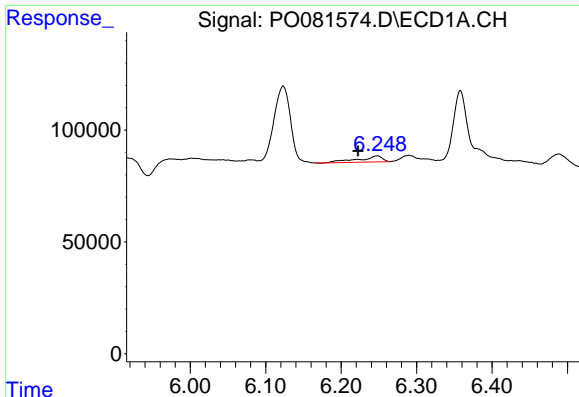
#2 Decachlorobiphenyl

R.T.: 10.880 min
 Delta R.T.: -0.006 min
 Response: 1619862
 Conc: 21.75 ng/ml



#2 Decachlorobiphenyl

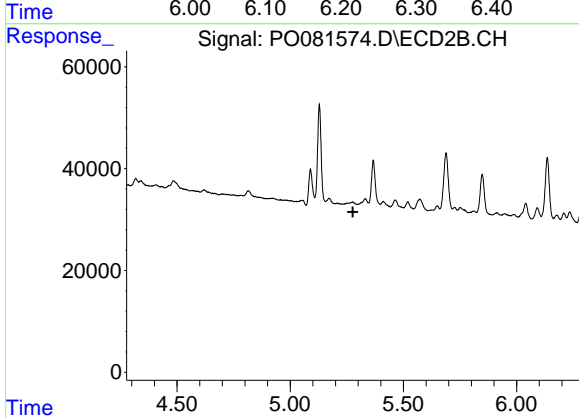
R.T.: 9.332 min
 Delta R.T.: -0.005 min
 Response: 506724
 Conc: 21.82 ng/ml



#4 AR-1016-2

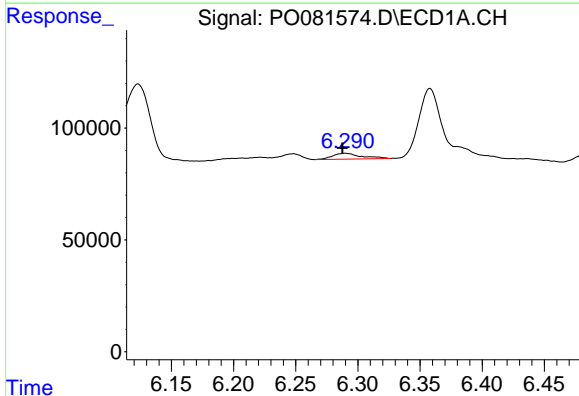
R.T.: 6.248 min
 Delta R.T.: 0.025 min
 Response: 59977
 Conc: 12.94 ng/ml

Instrument :
 ECD_O
 ClientSampled :



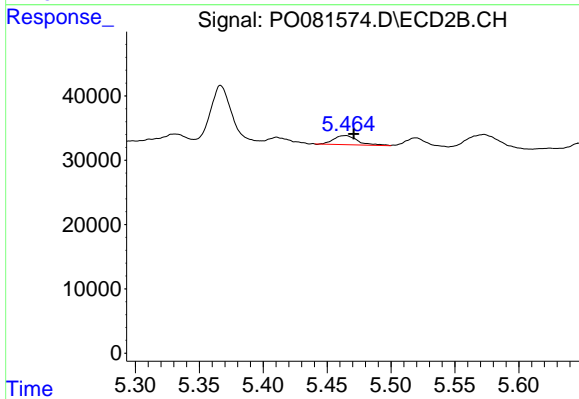
#4 AR-1016-2

R.T.: 0.000 min
 Exp R.T. : 5.277 min
 Response: 0
 Conc: N.D.



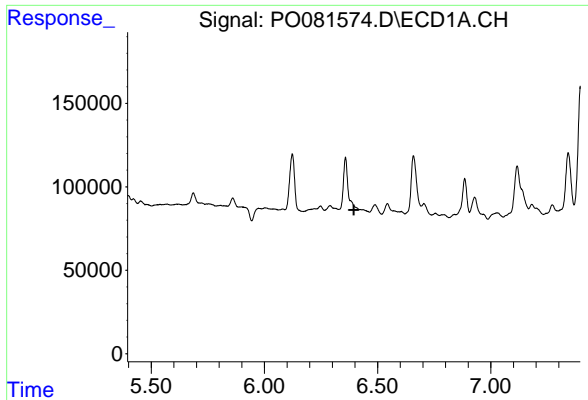
#5 AR-1016-3

R.T.: 6.290 min
 Delta R.T.: 0.002 min
 Response: 42542
 Conc: 14.86 ng/ml



#5 AR-1016-3

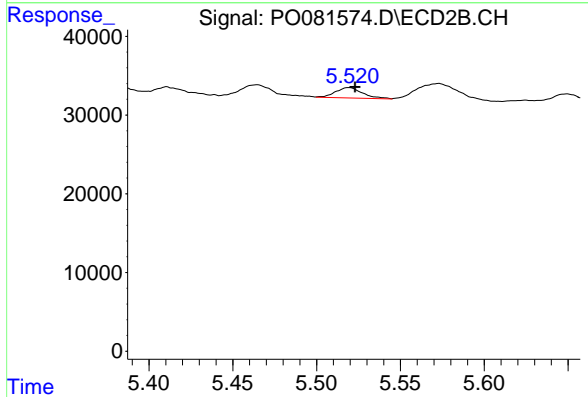
R.T.: 5.465 min
 Delta R.T.: -0.006 min
 Response: 18543
 Conc: 26.15 ng/ml



#6 AR-1016-4

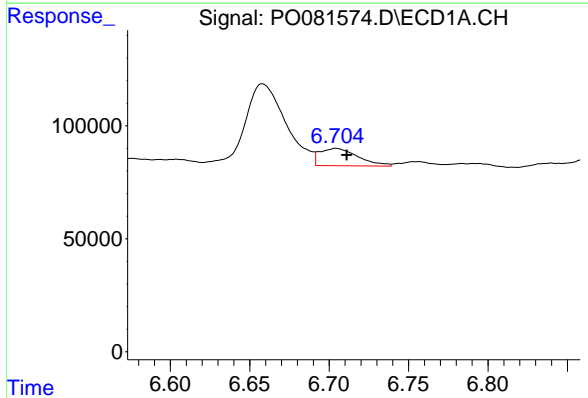
R.T.: 0.000 min
 Exp R.T.: 6.395 min
 Response: 0
 Conc: N.D.

Instrument :
 ECD_O
 ClientSampleId :



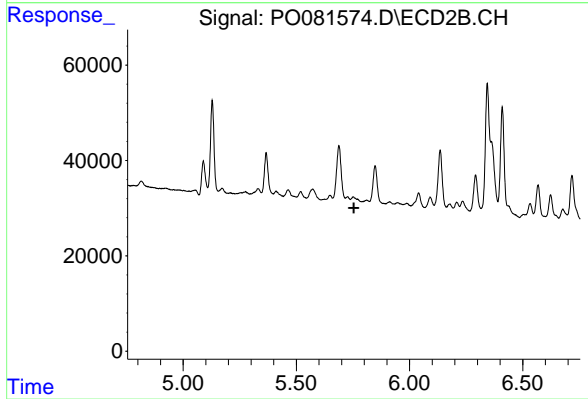
#6 AR-1016-4

R.T.: 5.520 min
 Delta R.T.: -0.003 min
 Response: 14904
 Conc: 24.06 ng/ml



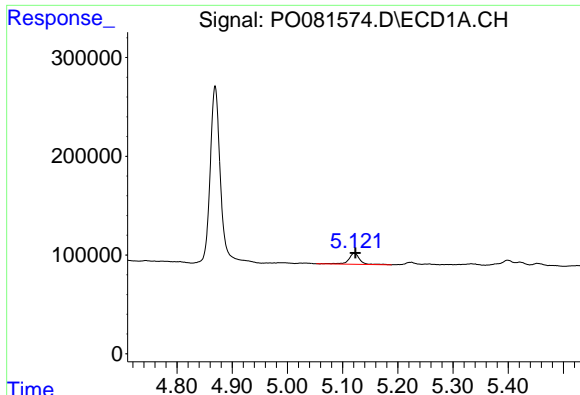
#7 AR-1016-5

R.T.: 6.704 min
 Delta R.T.: -0.007 min
 Response: 128495
 Conc: 56.46 ng/ml



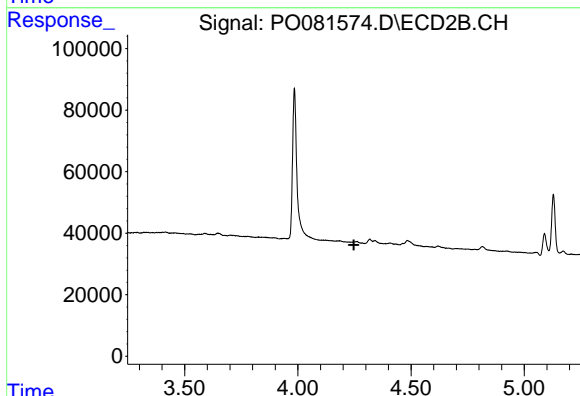
#7 AR-1016-5

R.T.: 0.000 min
 Exp R.T.: 5.754 min
 Response: 0
 Conc: N.D.

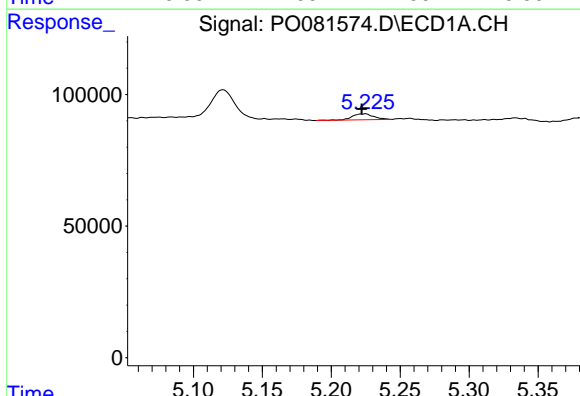


#8 AR-1221-1
 R.T.: 5.121 min
 Delta R.T.: -0.002 min
 Response: 153205
 Conc: 140.00 ng/ml

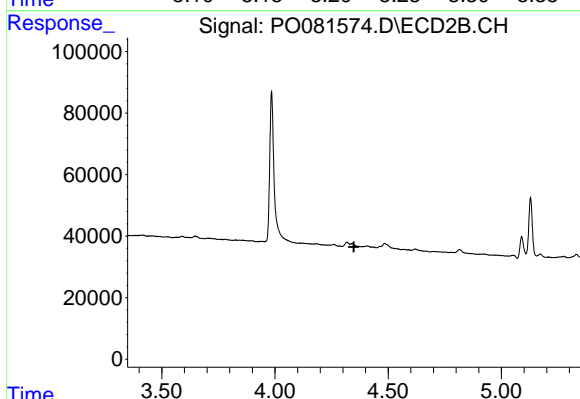
Instrument :
 ECD_O
 ClientSampled :



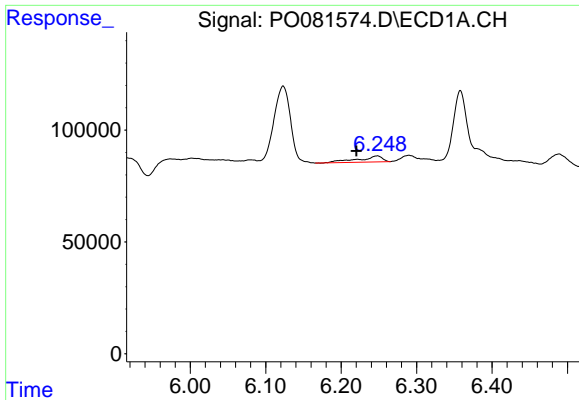
#8 AR-1221-1
 R.T.: 0.000 min
 Exp R.T. : 4.248 min
 Response: 0
 Conc: N.D.



#9 AR-1221-2
 R.T.: 5.225 min
 Delta R.T.: 0.002 min
 Response: 24992
 Conc: 31.70 ng/ml

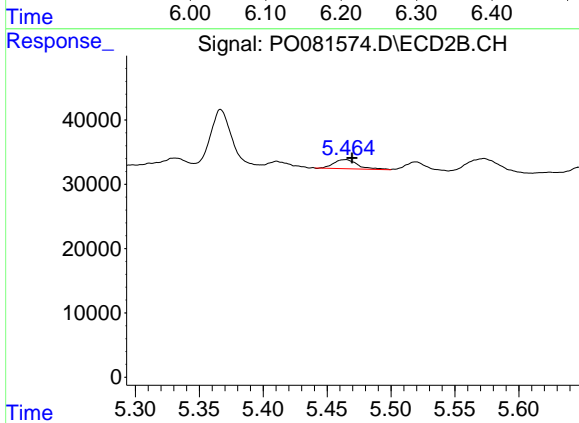


#9 AR-1221-2
 R.T.: 0.000 min
 Exp R.T. : 4.348 min
 Response: 0
 Conc: N.D.

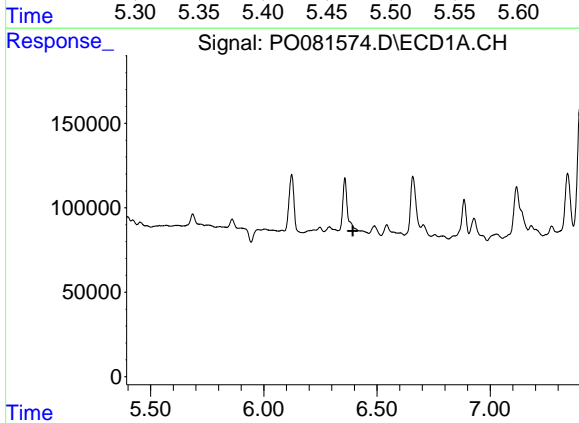


#13 AR-1232-3
 R.T.: 6.248 min
 Delta R.T.: 0.028 min
 Response: 59977
 Conc: 29.75 ng/ml

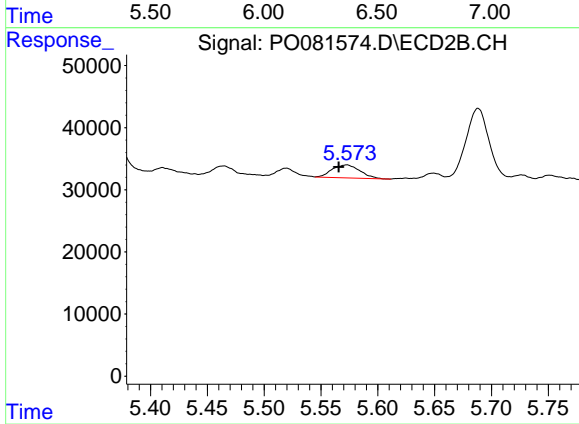
Instrument :
 ECD_O
 ClientSampled :



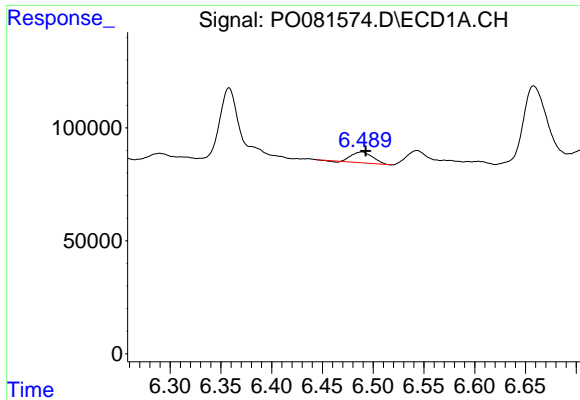
#13 AR-1232-3
 R.T.: 5.465 min
 Delta R.T.: -0.005 min
 Response: 18543
 Conc: 58.40 ng/ml



#14 AR-1232-4
 R.T.: 0.000 min
 Exp R.T. : 6.394 min
 Response: 0
 Conc: N.D.



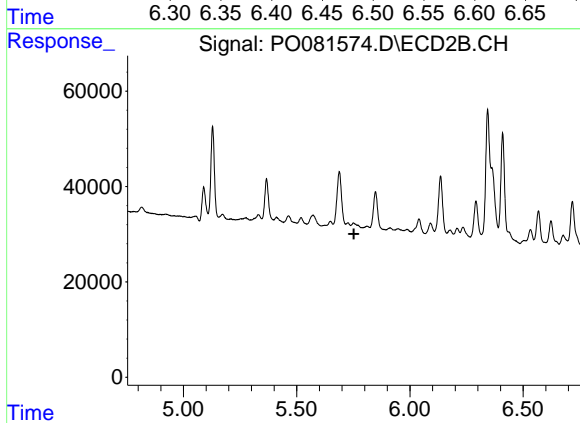
#14 AR-1232-4
 R.T.: 5.573 min
 Delta R.T.: 0.007 min
 Response: 35813
 Conc: 119.18 ng/ml



#15 AR-1232-5

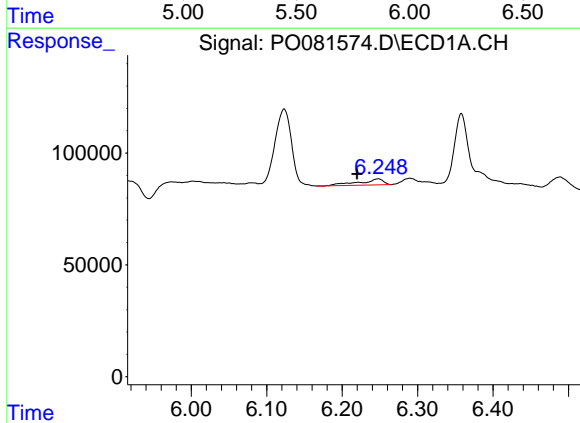
R.T.: 6.489 min
 Delta R.T.: -0.004 min
 Response: 68025
 Conc: 92.26 ng/ml

Instrument :
 ECD_O
 ClientSampleId :



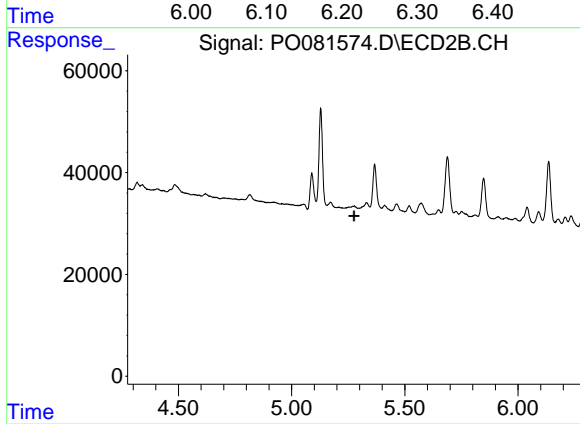
#15 AR-1232-5

R.T.: 0.000 min
 Exp R.T. : 5.753 min
 Response: 0
 Conc: N.D.



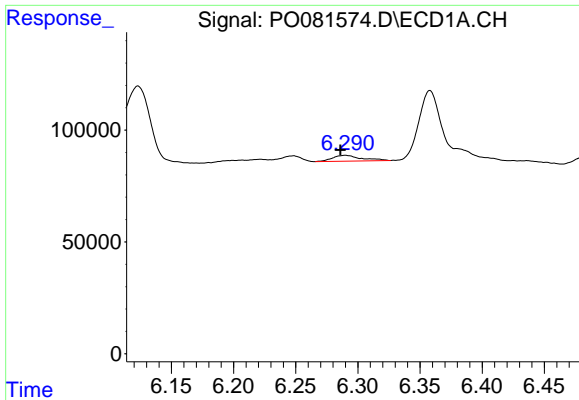
#17 AR-1242-2

R.T.: 6.248 min
 Delta R.T.: 0.028 min
 Response: 59977
 Conc: 16.70 ng/ml



#17 AR-1242-2

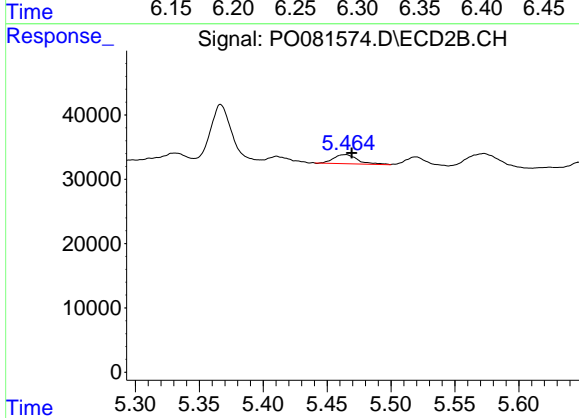
R.T.: 0.000 min
 Exp R.T. : 5.276 min
 Response: 0
 Conc: N.D.



#18 AR-1242-3

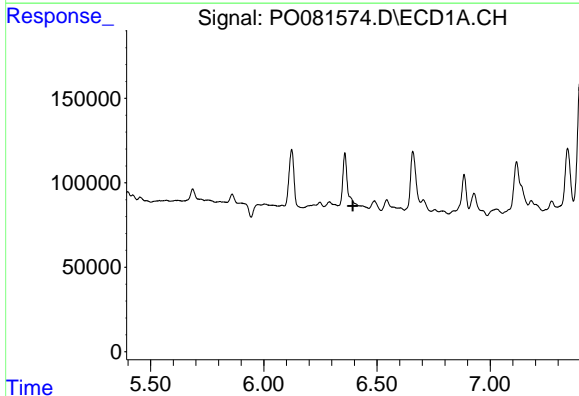
R.T.: 6.290 min
 Delta R.T.: 0.004 min
 Response: 42542
 Conc: 18.64 ng/ml

Instrument :
 ECD_O
 ClientSampled :



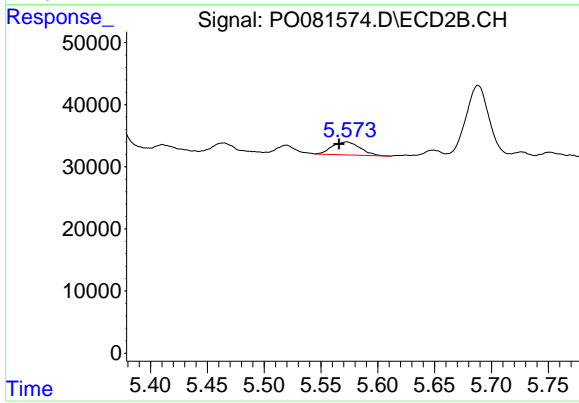
#18 AR-1242-3

R.T.: 5.465 min
 Delta R.T.: -0.005 min
 Response: 18543
 Conc: 33.08 ng/ml



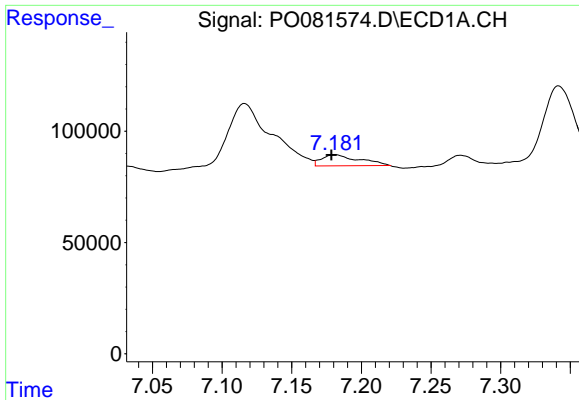
#19 AR-1242-4

R.T.: 0.000 min
 Exp R.T. : 6.393 min
 Response: 0
 Conc: N.D.



#19 AR-1242-4

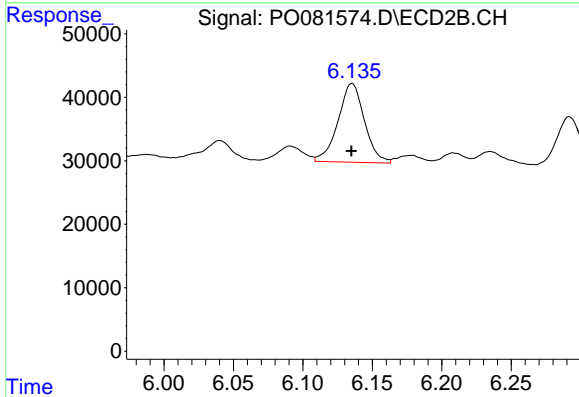
R.T.: 5.573 min
 Delta R.T.: 0.007 min
 Response: 35813
 Conc: 62.37 ng/ml



#20 AR-1242-5

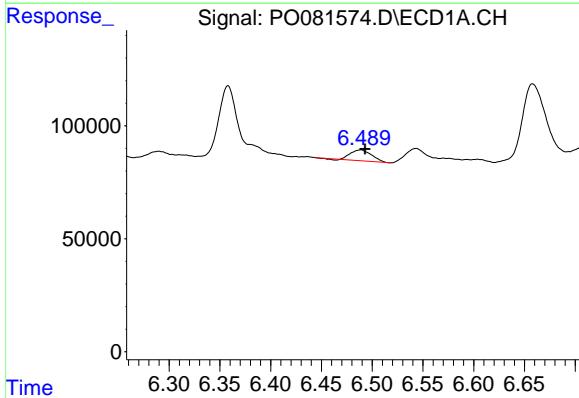
R.T.: 7.181 min
 Delta R.T.: 0.003 min
 Response: 94566
 Conc: 47.95 ng/ml

Instrument :
 ECD_O
 ClientSampleId :



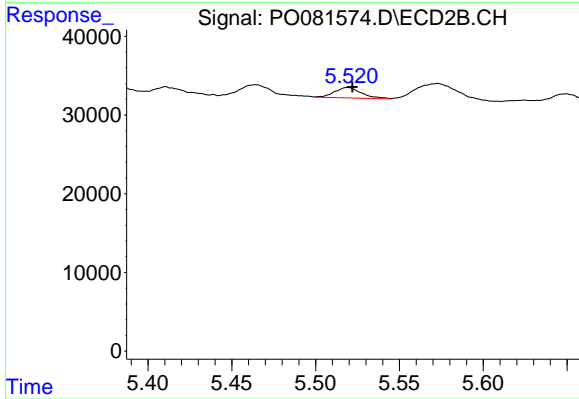
#20 AR-1242-5

R.T.: 6.135 min
 Delta R.T.: 0.000 min
 Response: 164484
 Conc: 220.11 ng/ml



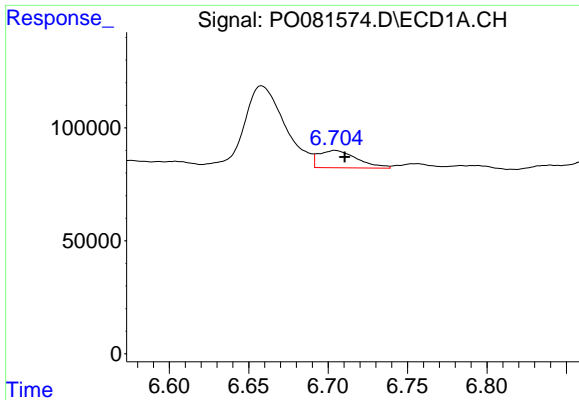
#22 AR-1248-2

R.T.: 6.489 min
 Delta R.T.: -0.004 min
 Response: 68025
 Conc: 25.79 ng/ml



#22 AR-1248-2

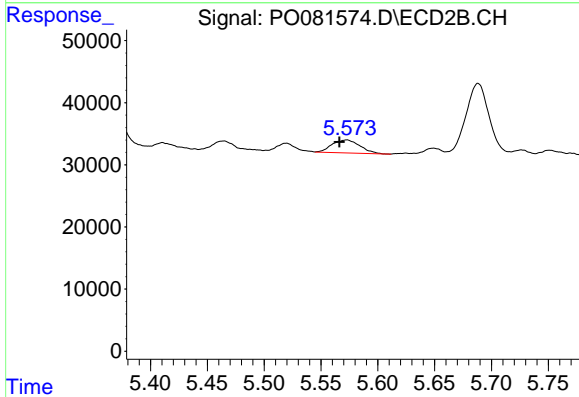
R.T.: 5.520 min
 Delta R.T.: -0.002 min
 Response: 14904
 Conc: 16.80 ng/ml



#23 AR-1248-3

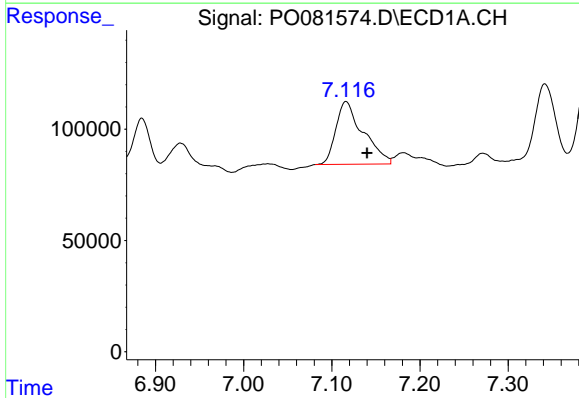
R.T.: 6.704 min
 Delta R.T.: -0.006 min
 Response: 128495
 Conc: 41.05 ng/ml

Instrument :
 ECD_O
 ClientSampleId :



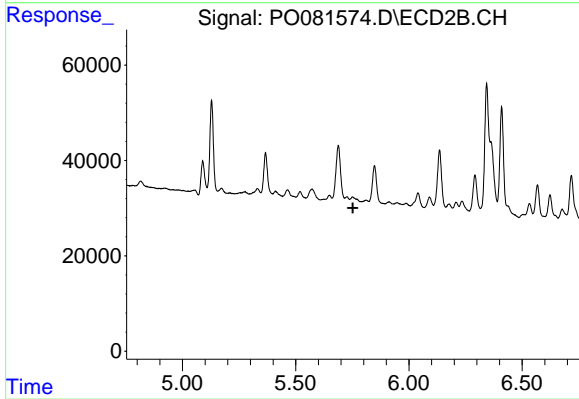
#23 AR-1248-3

R.T.: 5.573 min
 Delta R.T.: 0.007 min
 Response: 35813
 Conc: 40.96 ng/ml



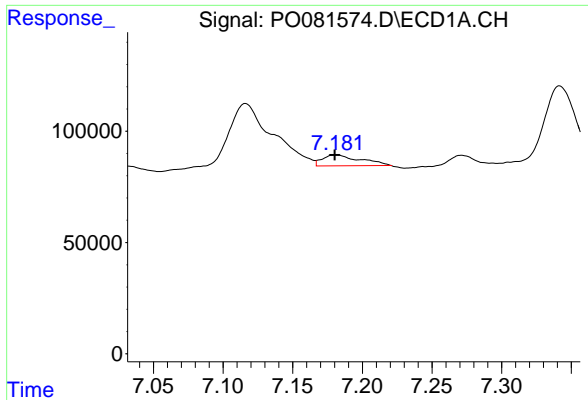
#24 AR-1248-4

R.T.: 7.116 min
 Delta R.T.: -0.024 min
 Response: 605189
 Conc: 175.71 ng/ml



#24 AR-1248-4

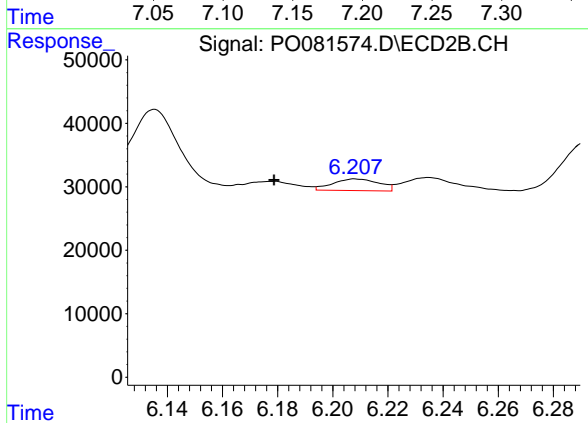
R.T.: 0.000 min
 Exp R.T.: 5.753 min
 Response: 0
 Conc: N.D.



#25 AR-1248-5

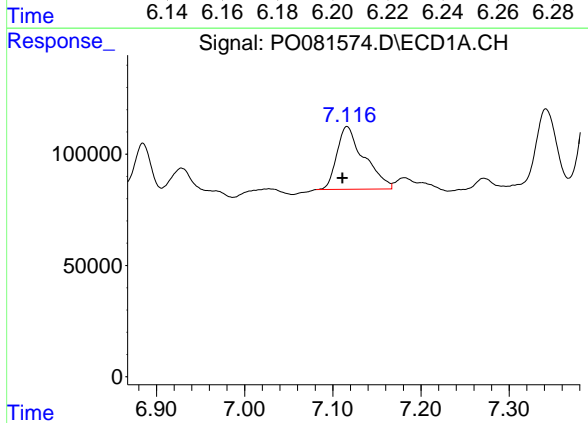
R.T.: 7.181 min
 Delta R.T.: 0.000 min
 Response: 94566
 Conc: 27.97 ng/ml

Instrument :
 ECD_O
 ClientSampleId :



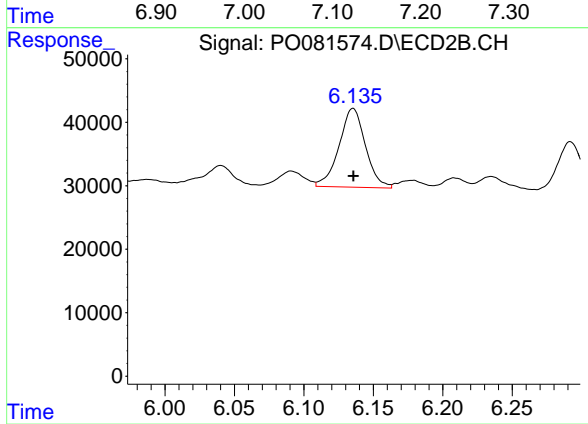
#25 AR-1248-5

R.T.: 6.208 min
 Delta R.T.: 0.030 min
 Response: 21418
 Conc: 22.19 ng/ml



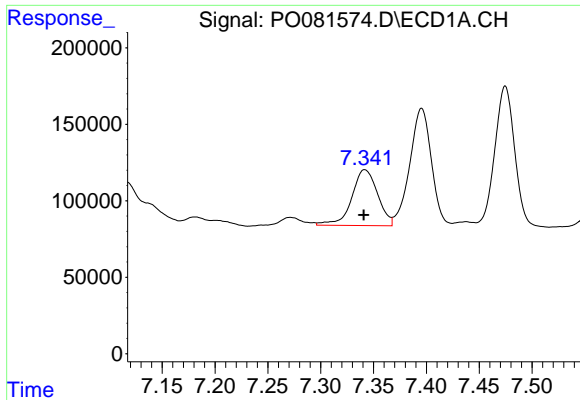
#26 AR-1254-1

R.T.: 7.116 min
 Delta R.T.: 0.005 min
 Response: 605189
 Conc: 168.79 ng/ml



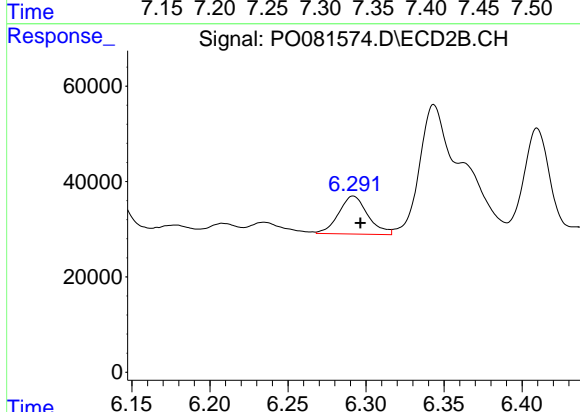
#26 AR-1254-1

R.T.: 6.135 min
 Delta R.T.: 0.000 min
 Response: 164484
 Conc: 107.42 ng/ml

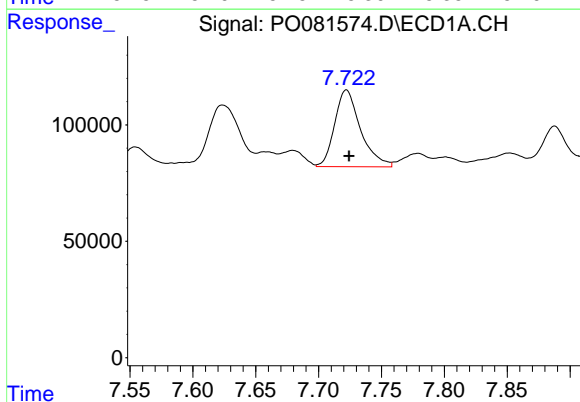


#27 AR-1254-2
 R.T.: 7.342 min
 Delta R.T.: 0.000 min
 Response: 621591
 Conc: 112.73 ng/ml

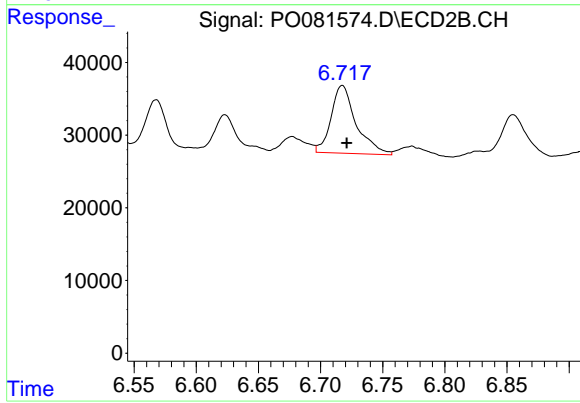
Instrument :
 ECD_O
 ClientSampleId :



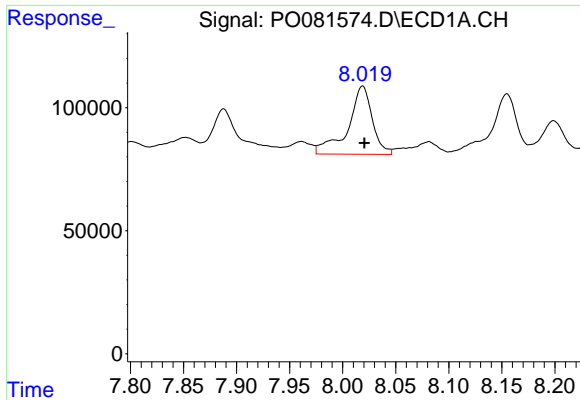
#27 AR-1254-2
 R.T.: 6.292 min
 Delta R.T.: -0.004 min
 Response: 103438
 Conc: 76.03 ng/ml



#28 AR-1254-3
 R.T.: 7.722 min
 Delta R.T.: -0.002 min
 Response: 472840
 Conc: 83.80 ng/ml

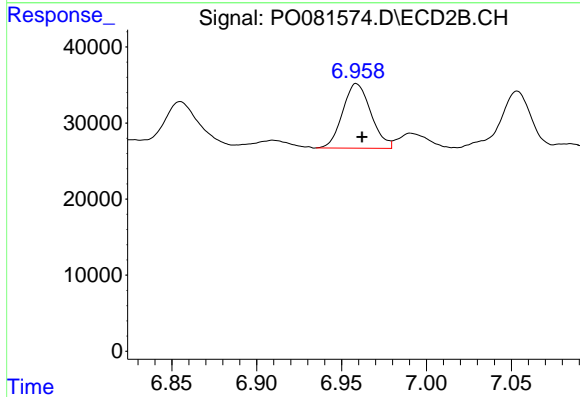


#28 AR-1254-3
 R.T.: 6.718 min
 Delta R.T.: -0.004 min
 Response: 130875
 Conc: 65.79 ng/ml

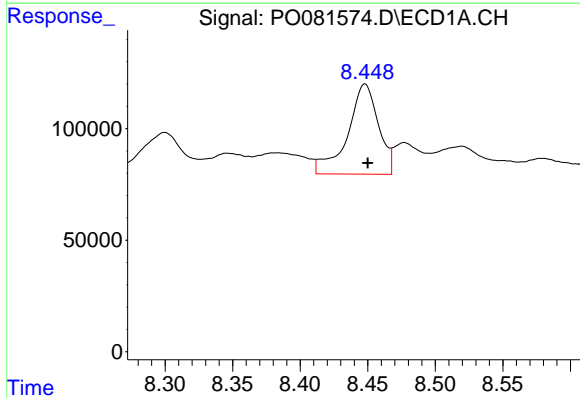


#29 AR-1254-4
 R.T.: 8.019 min
 Delta R.T.: -0.002 min
 Response: 442536
 Conc: 107.62 ng/ml

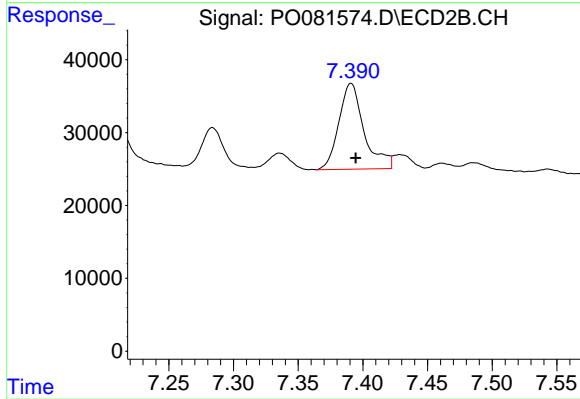
Instrument :
 ECD_O
 ClientSampleId :



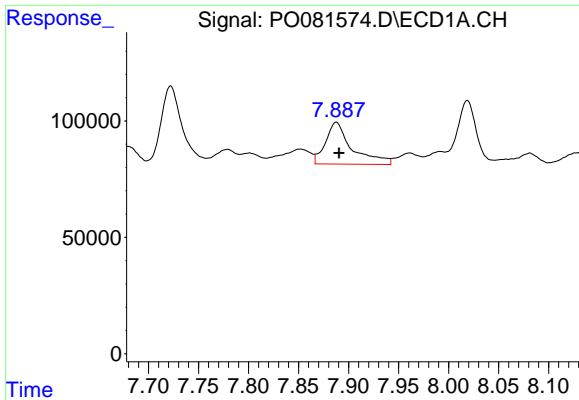
#29 AR-1254-4
 R.T.: 6.959 min
 Delta R.T.: -0.003 min
 Response: 98292
 Conc: 78.72 ng/ml



#30 AR-1254-5
 R.T.: 8.448 min
 Delta R.T.: -0.002 min
 Response: 643109
 Conc: 139.52 ng/ml



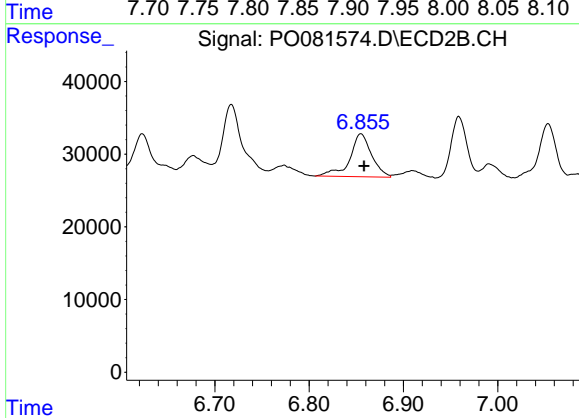
#30 AR-1254-5
 R.T.: 7.391 min
 Delta R.T.: -0.004 min
 Response: 159728
 Conc: 85.44 ng/ml



#31 AR-1260-1

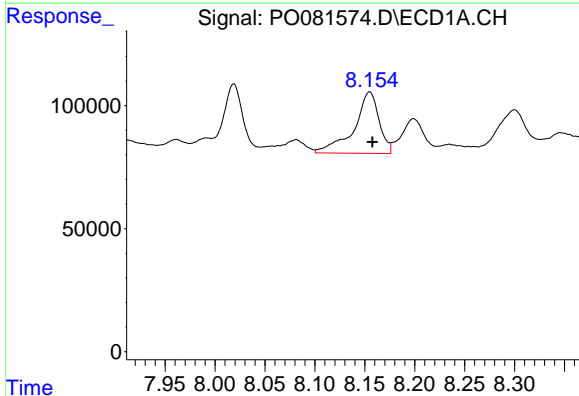
R.T.: 7.888 min
 Delta R.T.: -0.003 min
 Response: 330335
 Conc: 78.14 ng/ml

Instrument :
 ECD_O
 ClientSampleId :



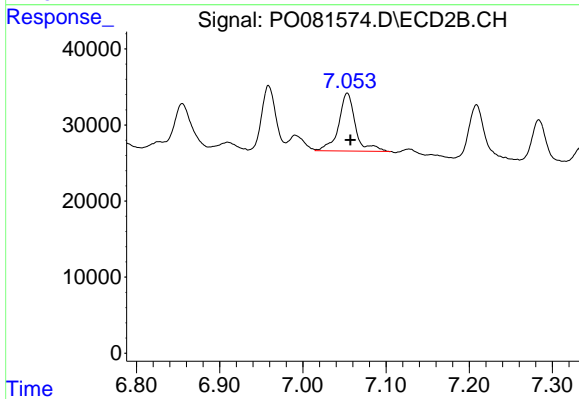
#31 AR-1260-1

R.T.: 6.855 min
 Delta R.T.: -0.003 min
 Response: 95010
 Conc: 68.06 ng/ml



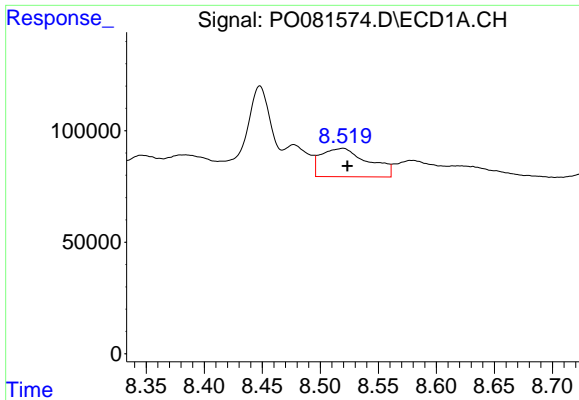
#32 AR-1260-2

R.T.: 8.155 min
 Delta R.T.: -0.003 min
 Response: 436063
 Conc: 84.01 ng/ml



#32 AR-1260-2

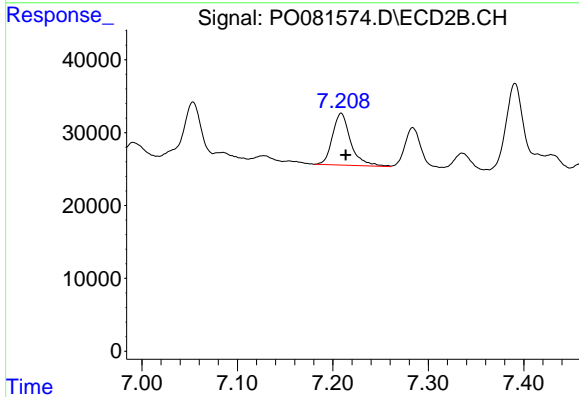
R.T.: 7.053 min
 Delta R.T.: -0.004 min
 Response: 106103
 Conc: 64.92 ng/ml



#33 AR-1260-3

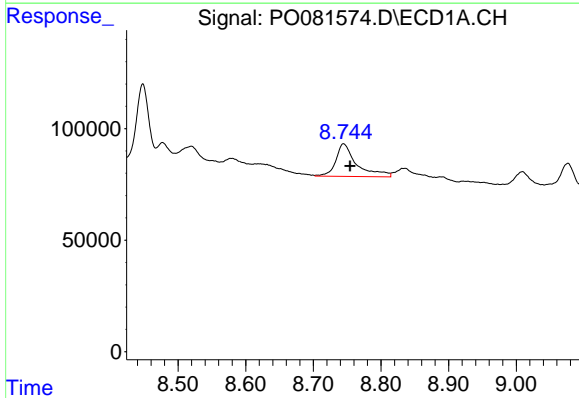
R.T.: 8.520 min
 Delta R.T.: -0.004 min
 Response: 360656
 Conc: 111.31 ng/ml

Instrument :
 ECD_O
 ClientSampleId :



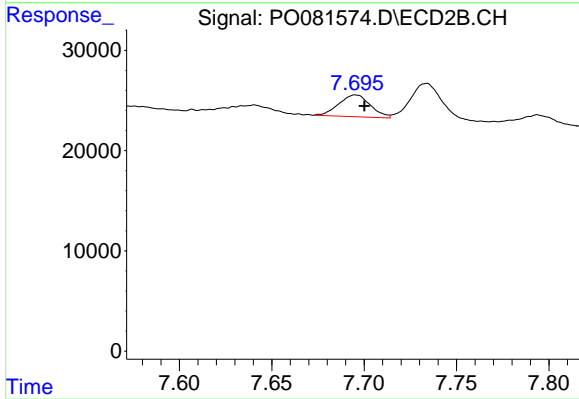
#33 AR-1260-3

R.T.: 7.209 min
 Delta R.T.: -0.005 min
 Response: 94584
 Conc: 56.88 ng/ml



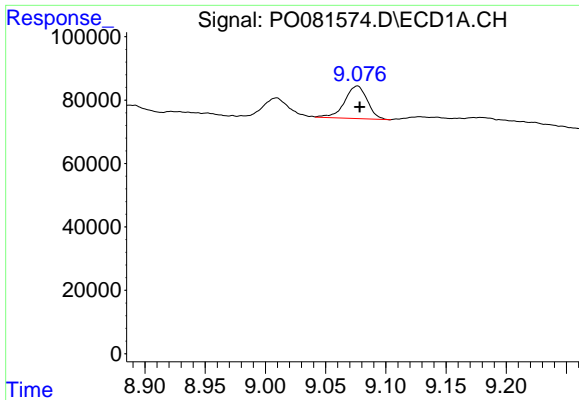
#34 AR-1260-4

R.T.: 8.745 min
 Delta R.T.: -0.009 min
 Response: 313151
 Conc: 78.56 ng/ml



#34 AR-1260-4

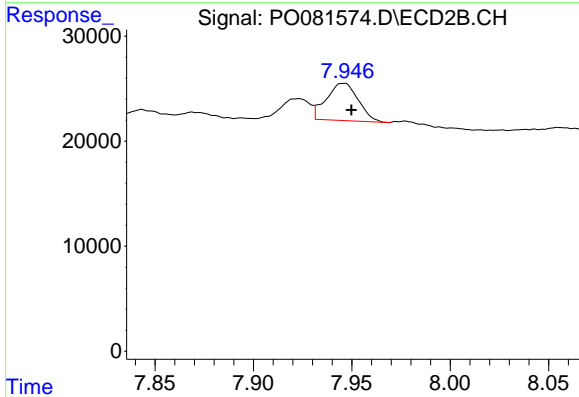
R.T.: 7.695 min
 Delta R.T.: -0.005 min
 Response: 25929
 Conc: 23.33 ng/ml



#35 AR-1260-5

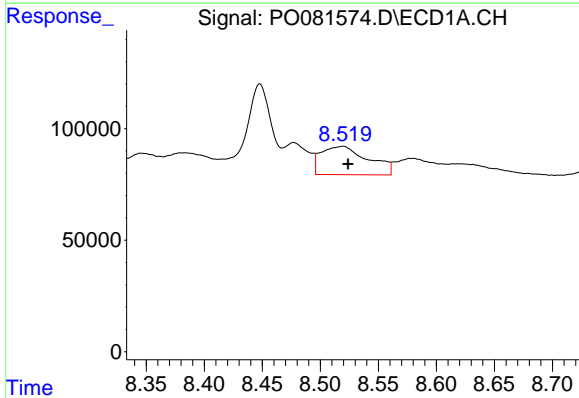
R.T.: 9.076 min
 Delta R.T.: -0.002 min
 Response: 134332
 Conc: 18.13 ng/ml

Instrument :
 ECD_O
 ClientSampleId :



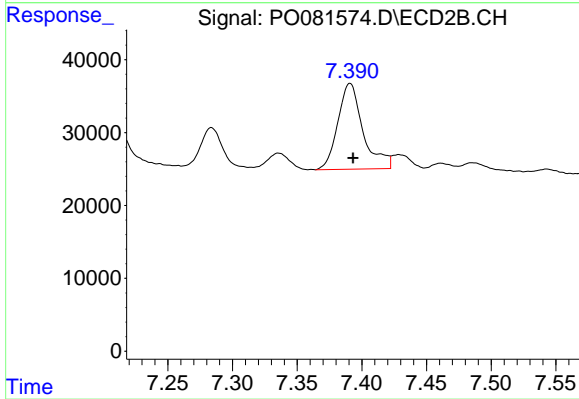
#35 AR-1260-5

R.T.: 7.946 min
 Delta R.T.: -0.004 min
 Response: 39843
 Conc: 16.13 ng/ml



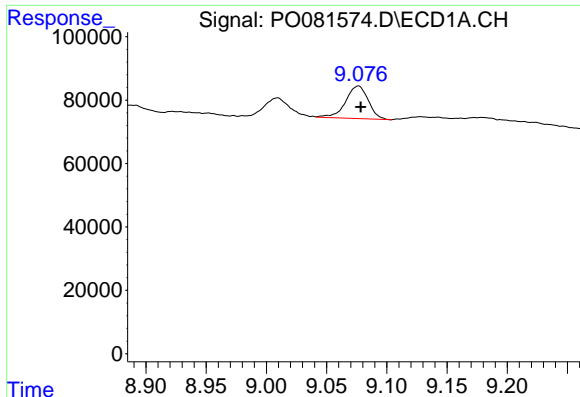
#36 AR-1262-1

R.T.: 8.520 min
 Delta R.T.: -0.004 min
 Response: 360656
 Conc: 69.58 ng/ml



#36 AR-1262-1

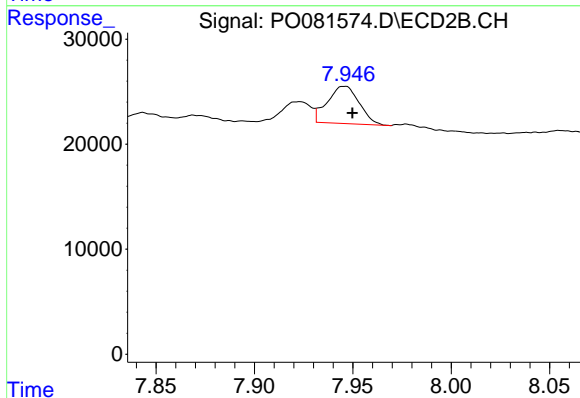
R.T.: 7.391 min
 Delta R.T.: -0.002 min
 Response: 159728
 Conc: 160.47 ng/ml



#37 AR-1262-2

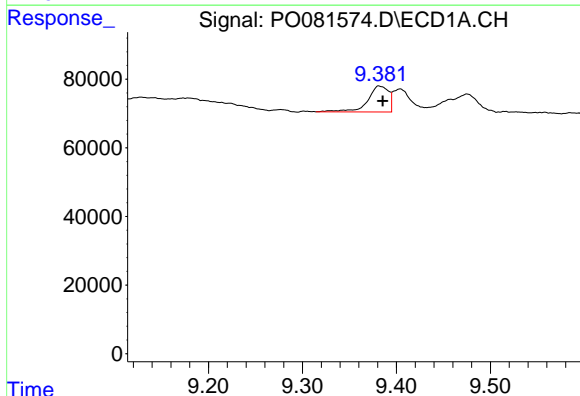
R.T.: 9.076 min
 Delta R.T.: -0.002 min
 Response: 134332
 Conc: 15.06 ng/ml

Instrument :
 ECD_O
 ClientSampleId :



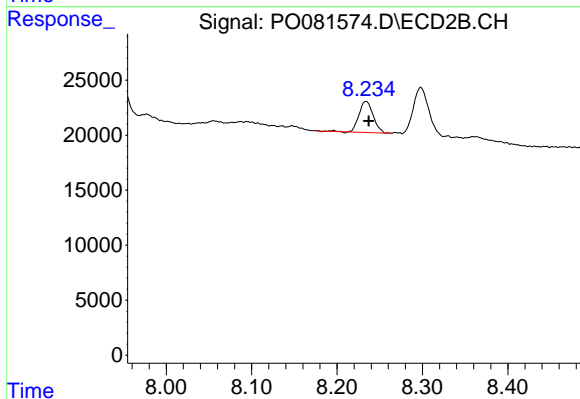
#37 AR-1262-2

R.T.: 7.946 min
 Delta R.T.: -0.004 min
 Response: 39843
 Conc: 13.00 ng/ml



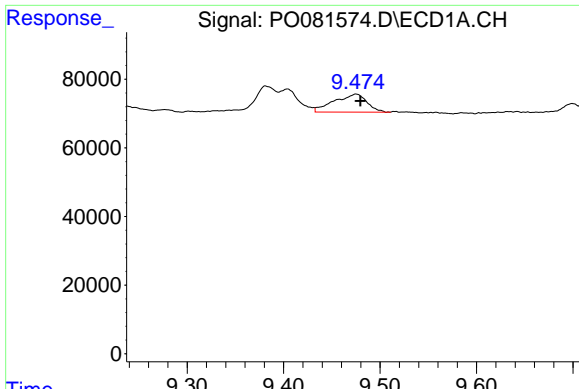
#38 AR-1262-3

R.T.: 9.382 min
 Delta R.T.: -0.004 min
 Response: 115638
 Conc: 28.83 ng/ml



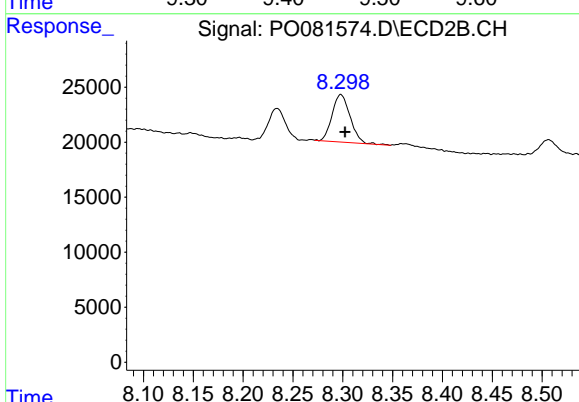
#38 AR-1262-3

R.T.: 8.234 min
 Delta R.T.: -0.003 min
 Response: 32877
 Conc: 24.57 ng/ml

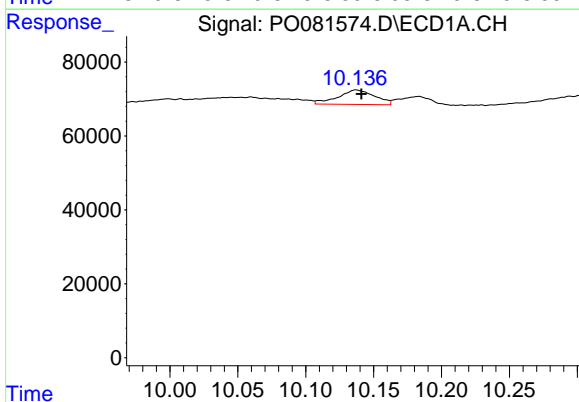


#39 AR-1262-4
 R.T.: 9.475 min
 Delta R.T.: -0.004 min
 Response: 123987
 Conc: 50.73 ng/ml

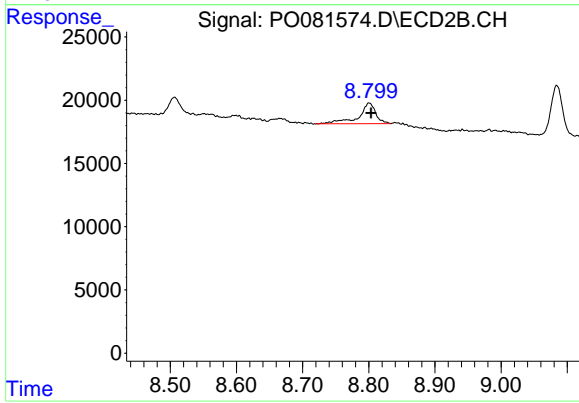
Instrument :
 ECD_O
 ClientSampled :



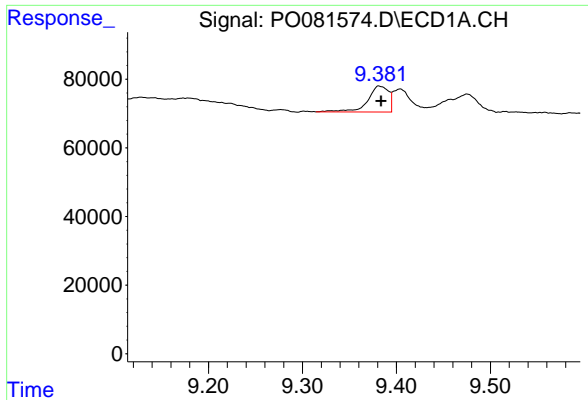
#39 AR-1262-4
 R.T.: 8.298 min
 Delta R.T.: -0.004 min
 Response: 54458
 Conc: 23.14 ng/ml



#40 AR-1262-5
 R.T.: 10.137 min
 Delta R.T.: -0.004 min
 Response: 73765
 Conc: 21.65 ng/ml

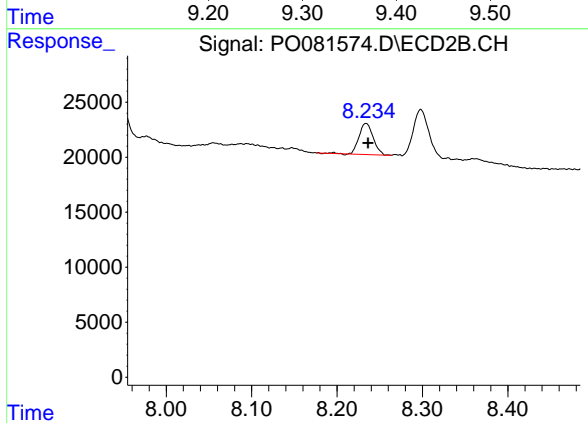


#40 AR-1262-5
 R.T.: 8.801 min
 Delta R.T.: -0.003 min
 Response: 29485
 Conc: 25.93 ng/ml

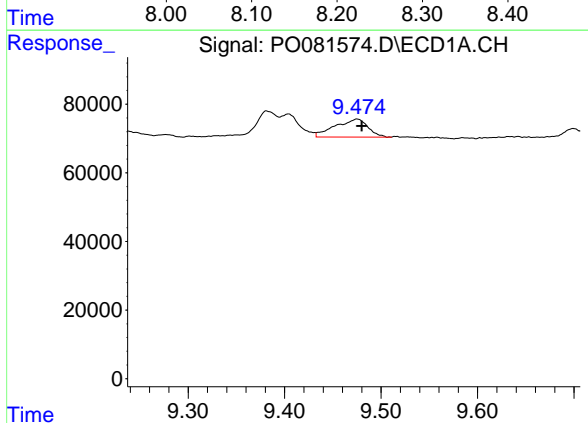


#41 AR-1268-1
 R.T.: 9.382 min
 Delta R.T.: -0.002 min
 Response: 115638
 Conc: 10.77 ng/ml

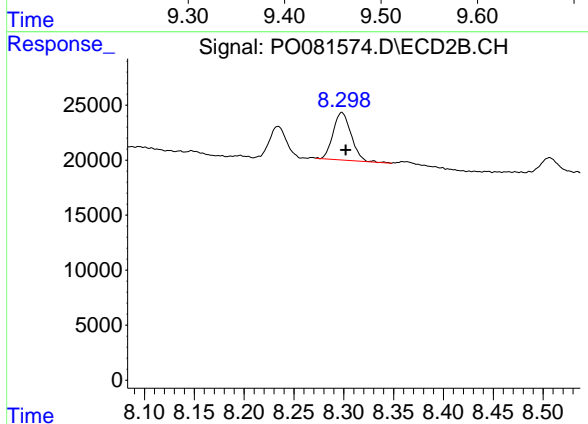
Instrument :
 ECD_O
 ClientSampleId :



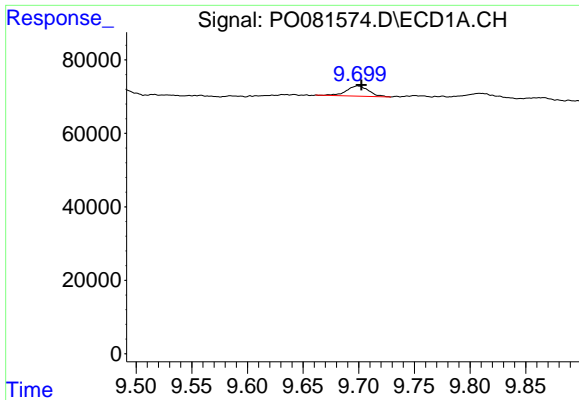
#41 AR-1268-1
 R.T.: 8.234 min
 Delta R.T.: -0.002 min
 Response: 32877
 Conc: 8.57 ng/ml



#42 AR-1268-2
 R.T.: 9.475 min
 Delta R.T.: -0.005 min
 Response: 123987
 Conc: 12.27 ng/ml



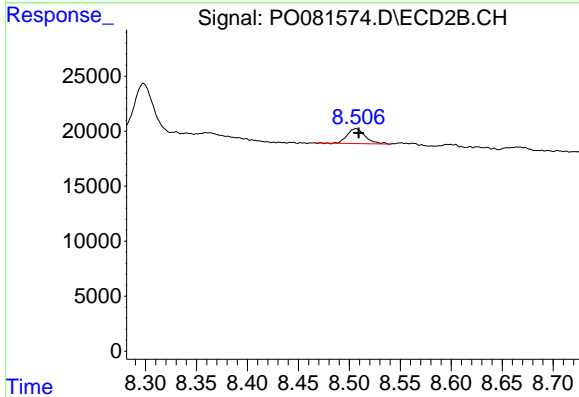
#42 AR-1268-2
 R.T.: 8.298 min
 Delta R.T.: -0.004 min
 Response: 54458
 Conc: 15.64 ng/ml



#43 AR-1268-3

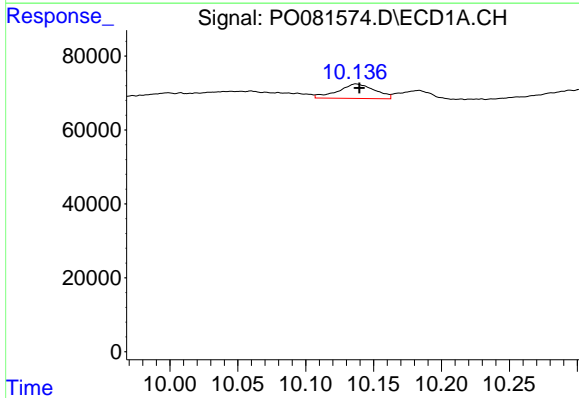
R.T.: 9.699 min
 Delta R.T.: -0.003 min
 Response: 38517
 Conc: 4.50 ng/ml

Instrument :
 ECD_O
 ClientSampled :



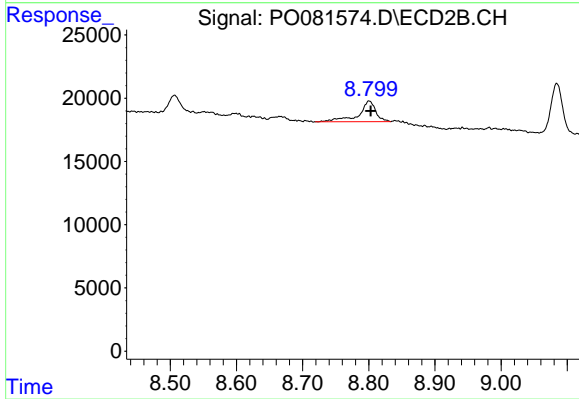
#43 AR-1268-3

R.T.: 8.506 min
 Delta R.T.: -0.003 min
 Response: 16665
 Conc: 5.31 ng/ml



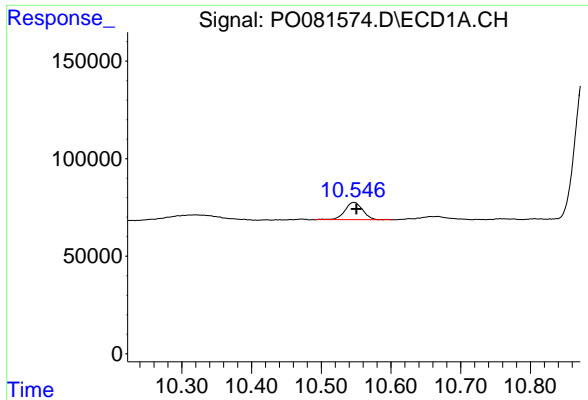
#44 AR-1268-4

R.T.: 10.137 min
 Delta R.T.: -0.002 min
 Response: 73765
 Conc: 19.21 ng/ml



#44 AR-1268-4

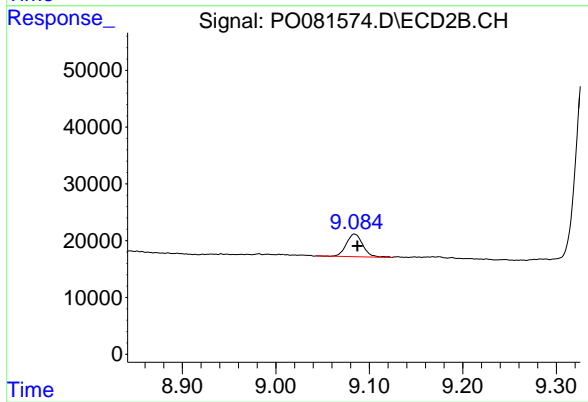
R.T.: 8.801 min
 Delta R.T.: -0.002 min
 Response: 29485
 Conc: 22.87 ng/ml



#45 AR-1268-5

R.T.: 10.547 min
Delta R.T.: -0.004 min
Response: 156608
Conc: 5.55 ng/ml

Instrument :
ECD_O
ClientSampleId :



#45 AR-1268-5

R.T.: 9.084 min
Delta R.T.: -0.003 min
Response: 48761
Conc: 5.42 ng/ml