

Data Path : Z:\pestpcbsrv\HPCHEM1\ECD_0\Data\P0092818\
 Data File : P0049454.D
 Signal(s) : Signal #1: ECD1A.CH Signal #2: ECD2B.CH
 Acq On : 29 Sep 2018 5:20
 Operator : SM/SJ
 Sample : J5133-09
 Misc :
 ALS Vial : 39 Sample Multiplier: 1

Instrument :
 ECD_0
 ClientSampleId :
 092618-DBRI-F-U-B

Integration File signal 1: autoint1.e
 Integration File signal 2: autoint2.e
 Quant Time: Oct 01 01:31:22 2018
 Quant Method : Z:\pestpcbsrv\HPCHEM1\ECD_0\methods\P0092818.M
 Quant Title : GC EXTRACTABLES
 QLast Update : Sat Sep 29 00:05:46 2018
 Response via : Initial Calibration
 Integrator: ChemStation 6890 Scale Mode: Small noise peaks clipped

Volume Inj. : 2 µl
 Signal #1 Phase : ZB-MR1 Signal #2 Phase: ZB-MR2
 Signal #1 Info : 30Mx0.32mmx 0.50µ Signal #2 Info : 30M x 0.32mm x 0.25µm

Compound	RT#1	RT#2	Resp#1	Resp#2	ng/ml	ng/ml

System Monitoring Compounds						
1) SA Tetrachlo...	4.388	3.520	3960676	3749303	18.875	21.918
2) SA Decachlor...	10.101	8.450	4046622	2816756	11.269	11.680

Target Compounds

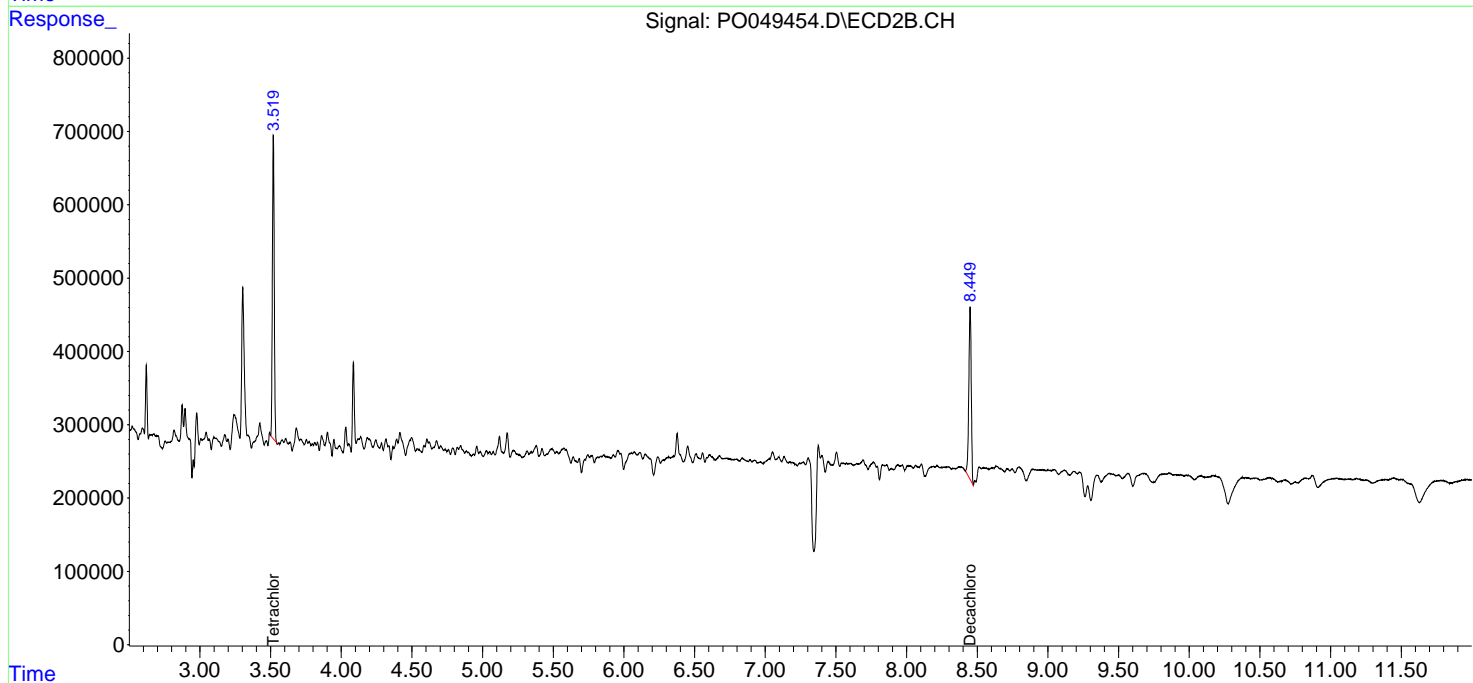
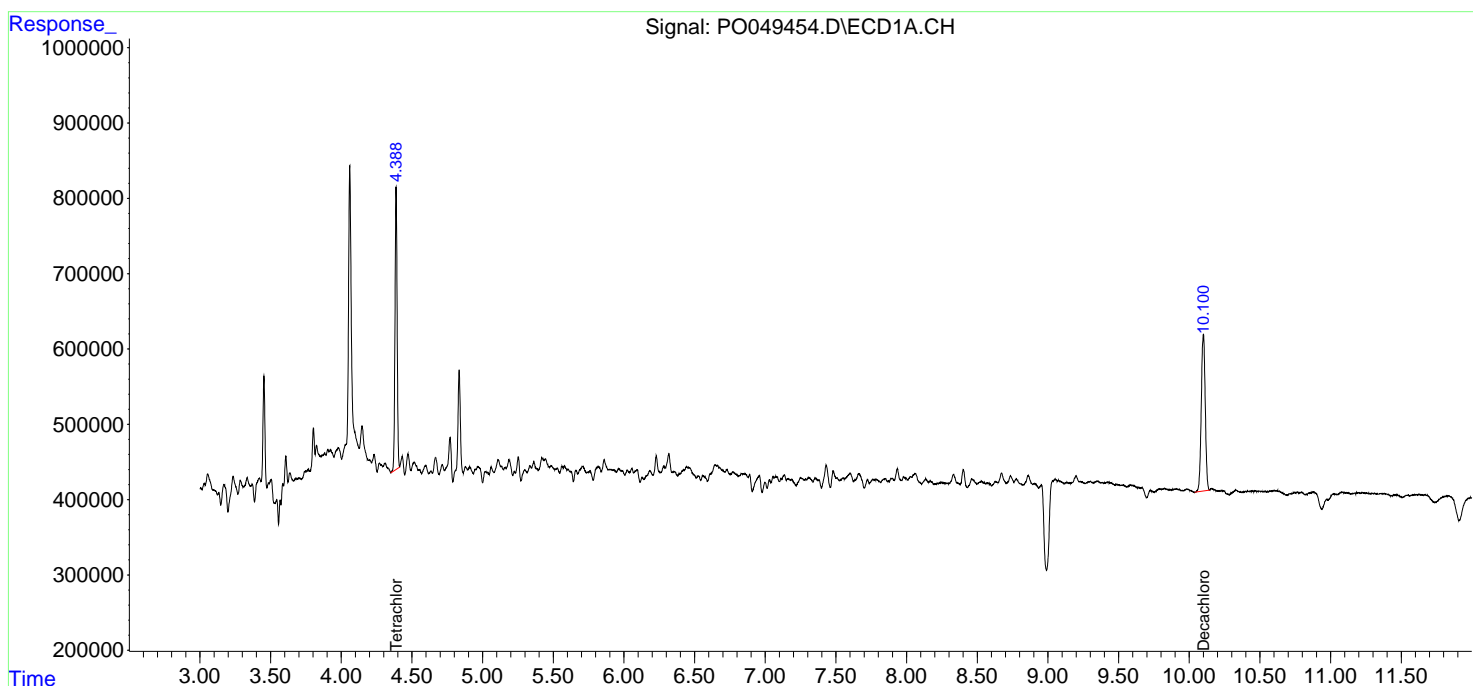
(f)=RT Delta > 1/2 Window (#)=Amounts differ by > 25% (m)=manual int.

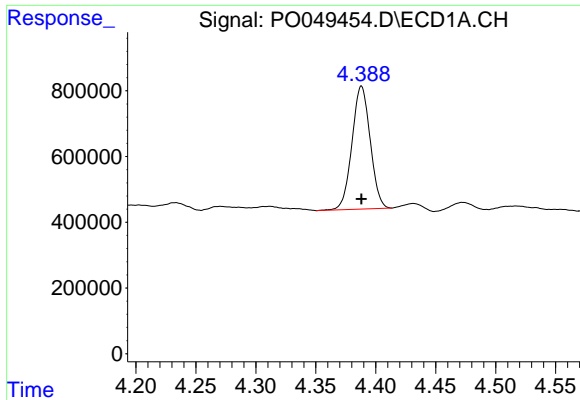
Data Path : Z:\pestpcbsrv\HPCHEM1\ECD_0\Data\P0092818\
 Data File : P0049454.D
 Signal(s) : Signal #1: ECD1A.CH Signal #2: ECD2B.CH
 Acq On : 29 Sep 2018 5:20
 Operator : SM/SJ
 Sample : J5133-09
 Misc :
 ALS Vial : 39 Sample Multiplier: 1

Instrument :
 ECD_O
 ClientSampleId :
 092618-DBRI-F-U-B

Integration File signal 1: autoint1.e
 Integration File signal 2: autoint2.e
 Quant Time: Oct 01 01:31:22 2018
 Quant Method : Z:\pestpcbsrv\HPCHEM1\ECD_0\methods\P0092818.M
 Quant Title : GC EXTRACTABLES
 QLast Update : Sat Sep 29 00:05:46 2018
 Response via : Initial Calibration
 Integrator: ChemStation 6890 Scale Mode: Small noise peaks clipped

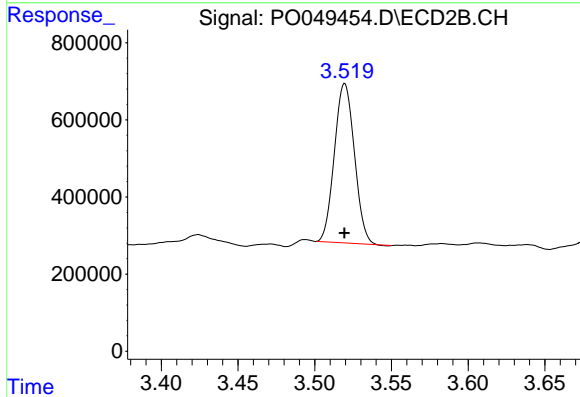
Volume Inj. : 2 µl
 Signal #1 Phase : ZB-MR1 Signal #2 Phase: ZB-MR2
 Signal #1 Info : 30Mx0.32mmx 0.50µ Signal #2 Info : 30M x 0.32mm x 0.25µm



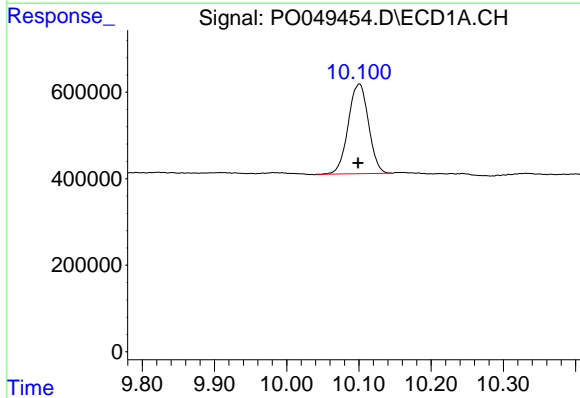


#1 Tetrachloro-m-xylene
 R.T.: 4.388 min
 Delta R.T.: 0.000 min
 Response: 3960676
 Conc: 18.88 ng/ml

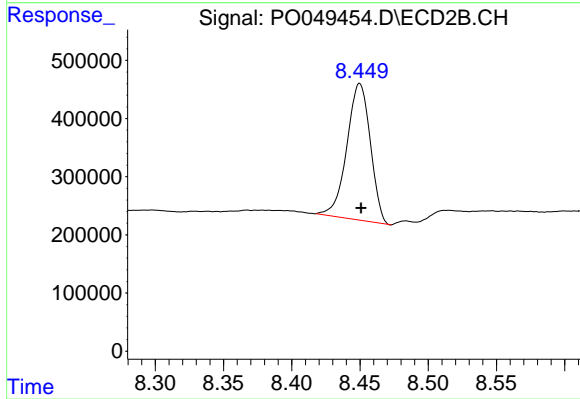
Instrument :
 ECD_O
 ClientSampleId :
 092618-DBRI-F-U-B



#1 Tetrachloro-m-xylene
 R.T.: 3.520 min
 Delta R.T.: 0.000 min
 Response: 3749303
 Conc: 21.92 ng/ml



#2 Decachlorobiphenyl
 R.T.: 10.101 min
 Delta R.T.: 0.002 min
 Response: 4046622
 Conc: 11.27 ng/ml



#2 Decachlorobiphenyl
 R.T.: 8.450 min
 Delta R.T.: -0.001 min
 Response: 2816756
 Conc: 11.68 ng/ml