

Data Path : Z:\pestpcbsrv\HPCHEM1\ECD\_0\Data\P0092820\  
 Data File : P0071692.D  
 Signal(s) : Signal #1: ECD1A.CH Signal #2: ECD2B.CH  
 Acq On : 28 Sep 2020 16:42  
 Operator : DD\AJ  
 Sample : L4132-02  
 Misc :  
 ALS Vial : 27 Sample Multiplier: 1

Instrument :  
 ECD\_0  
 ClientSampleId :  
 CHRT-25603

Integration File signal 1: autoint1.e  
 Integration File signal 2: autoint2.e  
 Quant Time: Sep 29 02:26:21 2020  
 Quant Method : Z:\pestpcbsrv\HPCHEM1\ECD\_0\methods\P0092320.M  
 Quant Title : GC EXTRACTABLES  
 QLast Update : Wed Sep 23 08:07:44 2020  
 Response via : Initial Calibration  
 Integrator: ChemStation 6890 Scale Mode: Small noise peaks clipped

Volume Inj. : 2 µl  
 Signal #1 Phase : ZB-MR1 Signal #2 Phase: ZB-MR2  
 Signal #1 Info : 30Mx0.32mmx 0.50µ Signal #2 Info : 30M x 0.32mm x 0.25µm

Compound	RT#1	RT#2	Resp#1	Resp#2	ng/ml	ng/ml
-----						
System Monitoring Compounds						
1) SA Tetrachlo...	4.339	3.523	1987903	1025951	23.165	24.910
2) SA Decachlor...	9.951	8.700	2843419	1385833	24.750	22.799

Target Compounds

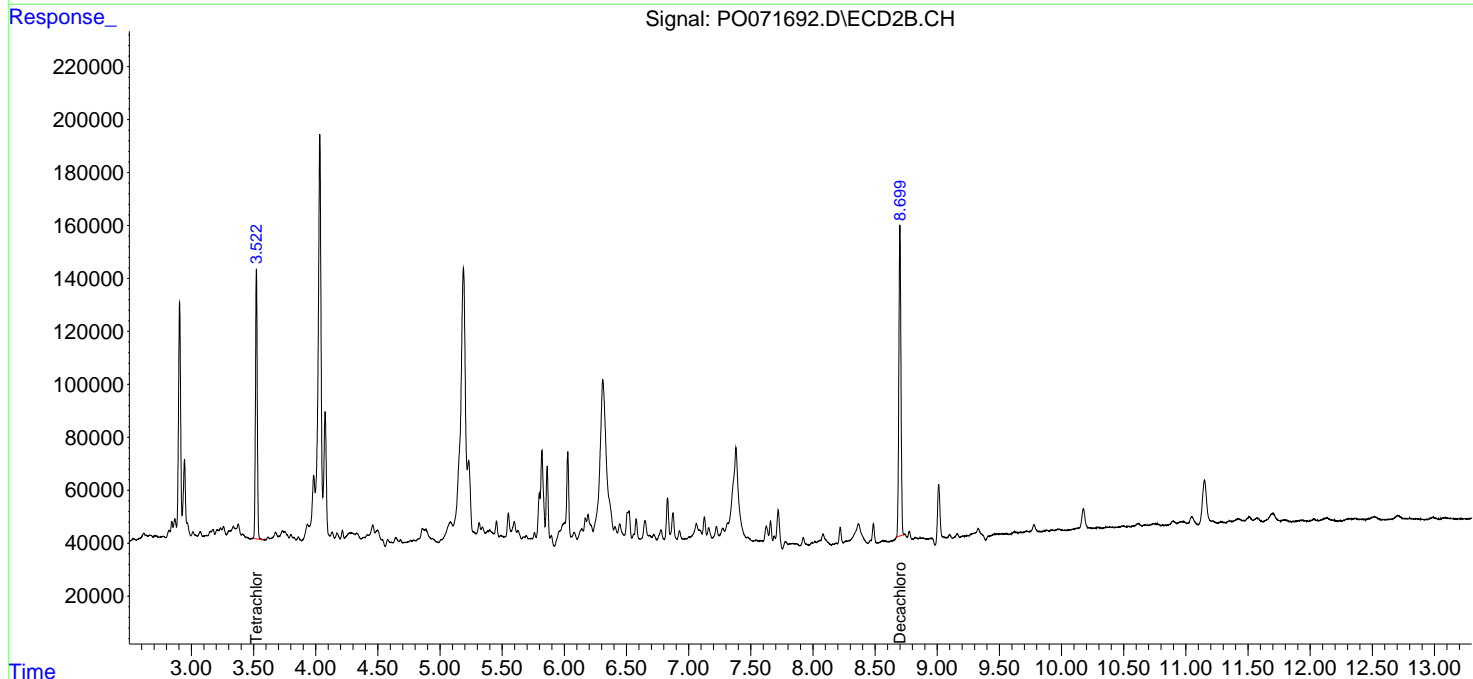
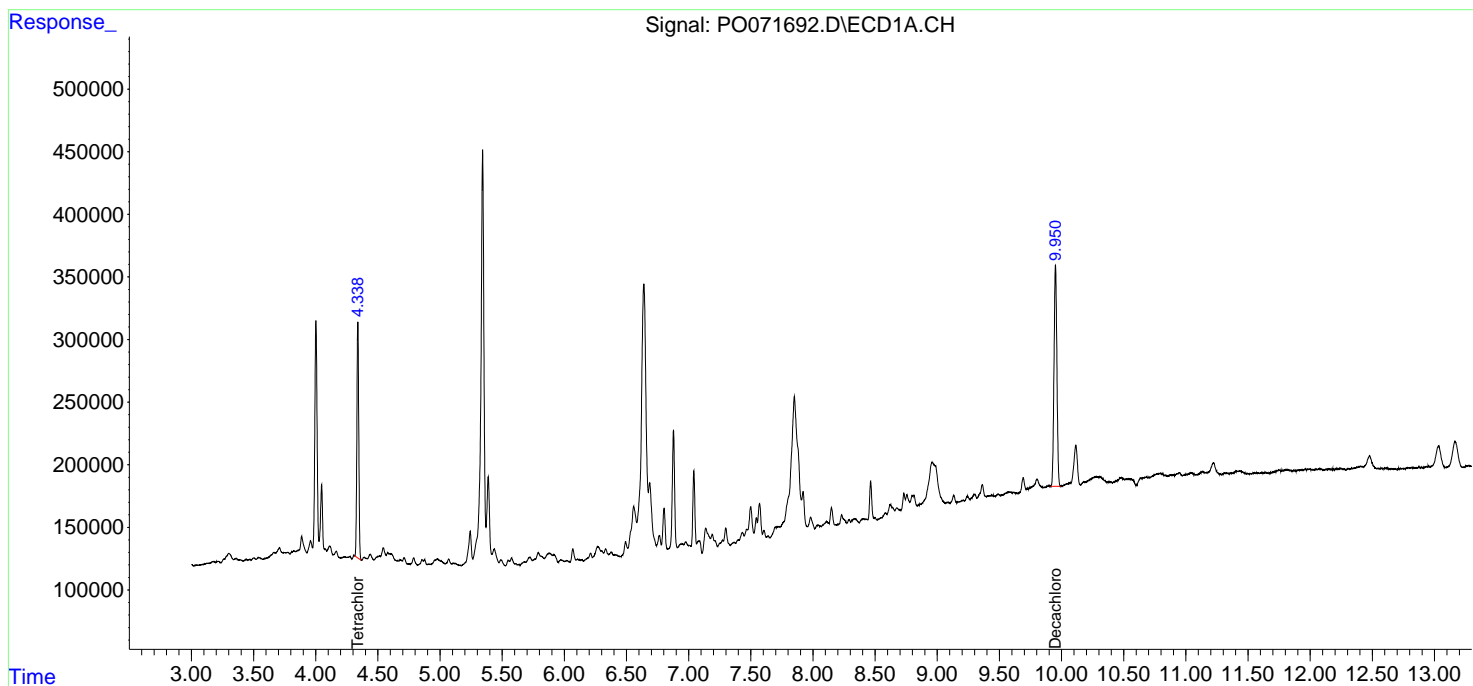
(f)=RT Delta > 1/2 Window (#)=Amounts differ by > 25% (m)=manual int.

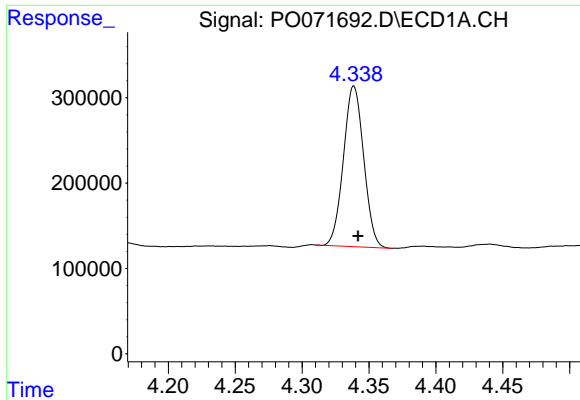
Data Path : Z:\pestpcbsrv\HPCHEM1\ECD\_O\Data\P0092820\  
 Data File : P0071692.D  
 Signal(s) : Signal #1: ECD1A.CH Signal #2: ECD2B.CH  
 Acq On : 28 Sep 2020 16:42  
 Operator : DD\AJ  
 Sample : L4132-02  
 Misc :  
 ALS Vial : 27 Sample Multiplier: 1

Instrument :  
 ECD\_O  
 ClientSampled :  
 CHRT-25603

Integration File signal 1: autoint1.e  
 Integration File signal 2: autoint2.e  
 Quant Time: Sep 29 02:26:21 2020  
 Quant Method : Z:\pestpcbsrv\HPCHEM1\ECD\_O\methods\P0092320.M  
 Quant Title : GC EXTRACTABLES  
 QLast Update : Wed Sep 23 08:07:44 2020  
 Response via : Initial Calibration  
 Integrator: ChemStation 6890 Scale Mode: Small noise peaks clipped

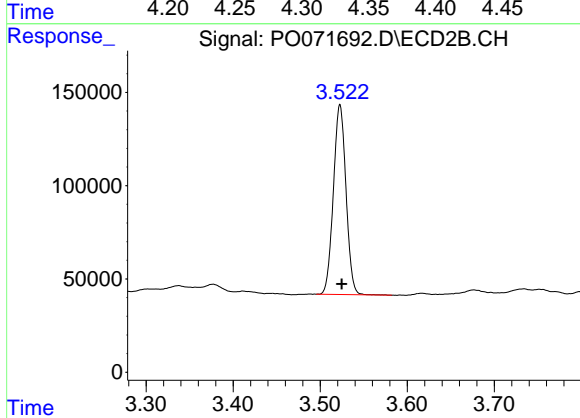
Volume Inj. : 2 µl  
 Signal #1 Phase : ZB-MR1 Signal #2 Phase: ZB-MR2  
 Signal #1 Info : 30Mx0.32mmx 0.50µ Signal #2 Info : 30M x 0.32mm x 0.25µm



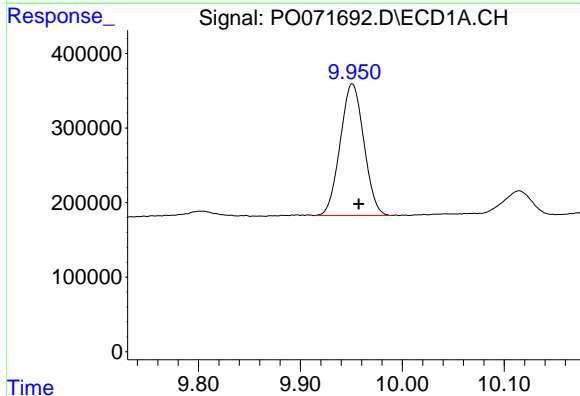


#1 Tetrachloro-m-xylene  
 R.T.: 4.339 min  
 Delta R.T.: -0.003 min  
 Response: 1987903  
 Conc: 23.17 ng/ml

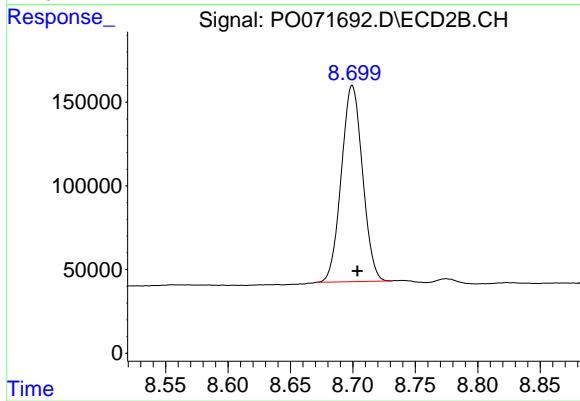
Instrument :  
 ECD\_O  
 ClientSampleId :  
 CHRT-25603



#1 Tetrachloro-m-xylene  
 R.T.: 3.523 min  
 Delta R.T.: -0.002 min  
 Response: 1025951  
 Conc: 24.91 ng/ml



#2 Decachlorobiphenyl  
 R.T.: 9.951 min  
 Delta R.T.: -0.006 min  
 Response: 2843419  
 Conc: 24.75 ng/ml



#2 Decachlorobiphenyl  
 R.T.: 8.700 min  
 Delta R.T.: -0.004 min  
 Response: 1385833  
 Conc: 22.80 ng/ml