

Data Path : Z:\pestpcbsrv\HPCHEM1\ECD_0\Data\P0092920\
 Data File : P0071735.D
 Signal(s) : Signal #1: ECD1A.CH Signal #2: ECD2B.CH
 Acq On : 29 Sep 2020 16:37
 Operator : DD\AJ
 Sample : L4157-01
 Misc :
 ALS Vial : 16 Sample Multiplier: 1

Instrument :
 ECD_0
ClientSampleId :
 KMA9581-END-1

Manual Integrations
APPROVED
 Ankita
 9/30/2020 2:29:07 PM

Integration File signal 1: autoint1.e
 Integration File signal 2: autoint2.e
 Quant Time: Sep 30 04:32:21 2020
 Quant Method : Z:\pestpcbsrv\HPCHEM1\ECD_0\methods\P0092320.M
 Quant Title : GC EXTRACTABLES
 QLast Update : Wed Sep 23 08:07:44 2020
 Response via : Initial Calibration
 Integrator: ChemStation 6890 Scale Mode: Small noise peaks clipped

Volume Inj. : 2 µl
 Signal #1 Phase : ZB-MR2 Signal #2 Phase: ZB-MR2
 Signal #1 Info : 30Mx0.32mmx 0.50µ Signal #2 Info : 30M x 0.32mm x 0.25µm

Compound	RT#1	RT#2	Resp#1	Resp#2	ng/ml	ng/ml

System Monitoring Compounds						
1) SA Tetrachlo...	4.344	3.530	1645921	1015487	19.180	24.656 #
2) SA Decachlor...	9.980f	8.735f	1790831	830383	15.588m	13.661m
Target Compounds						
26) L6 AR-1254-1	6.534	5.603	1497360	1167243	408.896	492.870
27) L6 AR-1254-2	6.762	5.765	2497208	962462	414.175	459.516
28) L6 AR-1254-3	7.139	6.174	2352876	1321679	371.622	390.590
29) L6 AR-1254-4	7.435	6.415	1838660	798342	298.441	335.326
30) L6 AR-1254-5	7.856	6.837	1601168	941723	269.405	291.147

(f)=RT Delta > 1/2 Window (#)=Amounts differ by > 25% (m)=manual int.

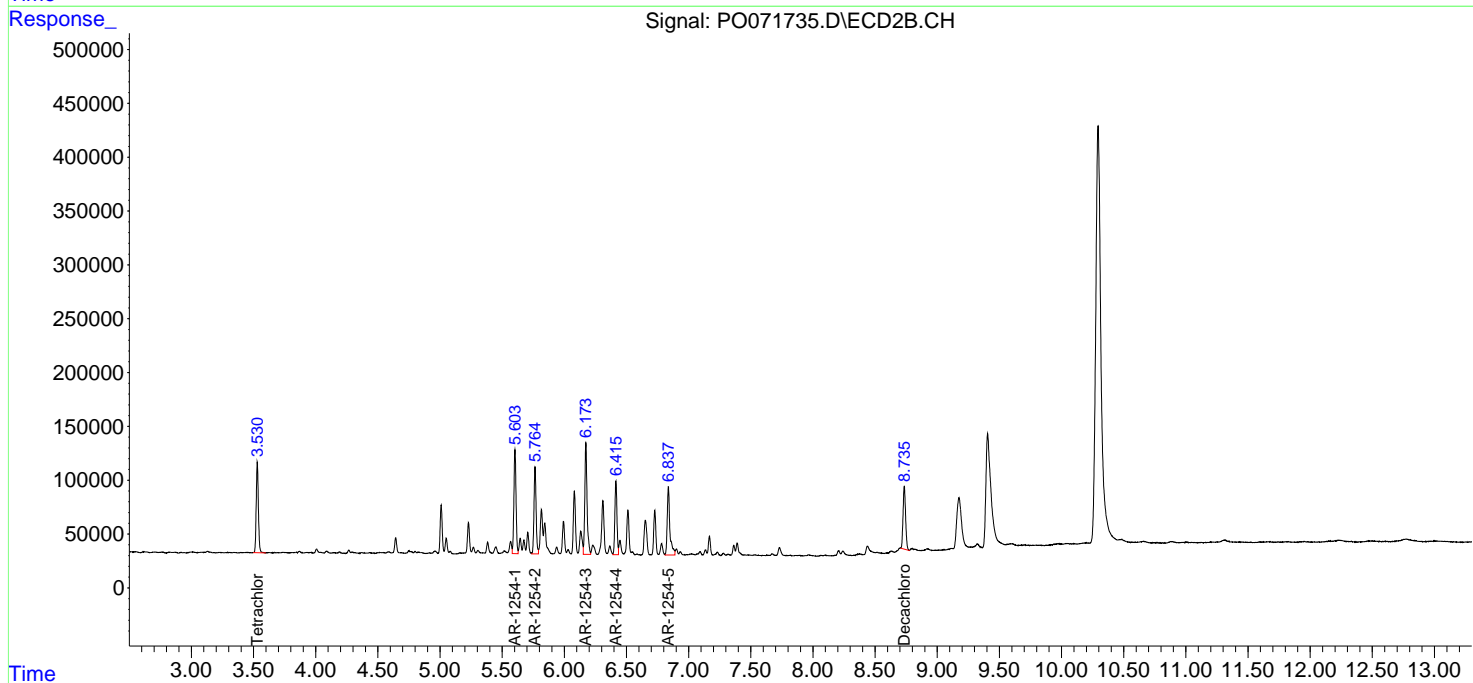
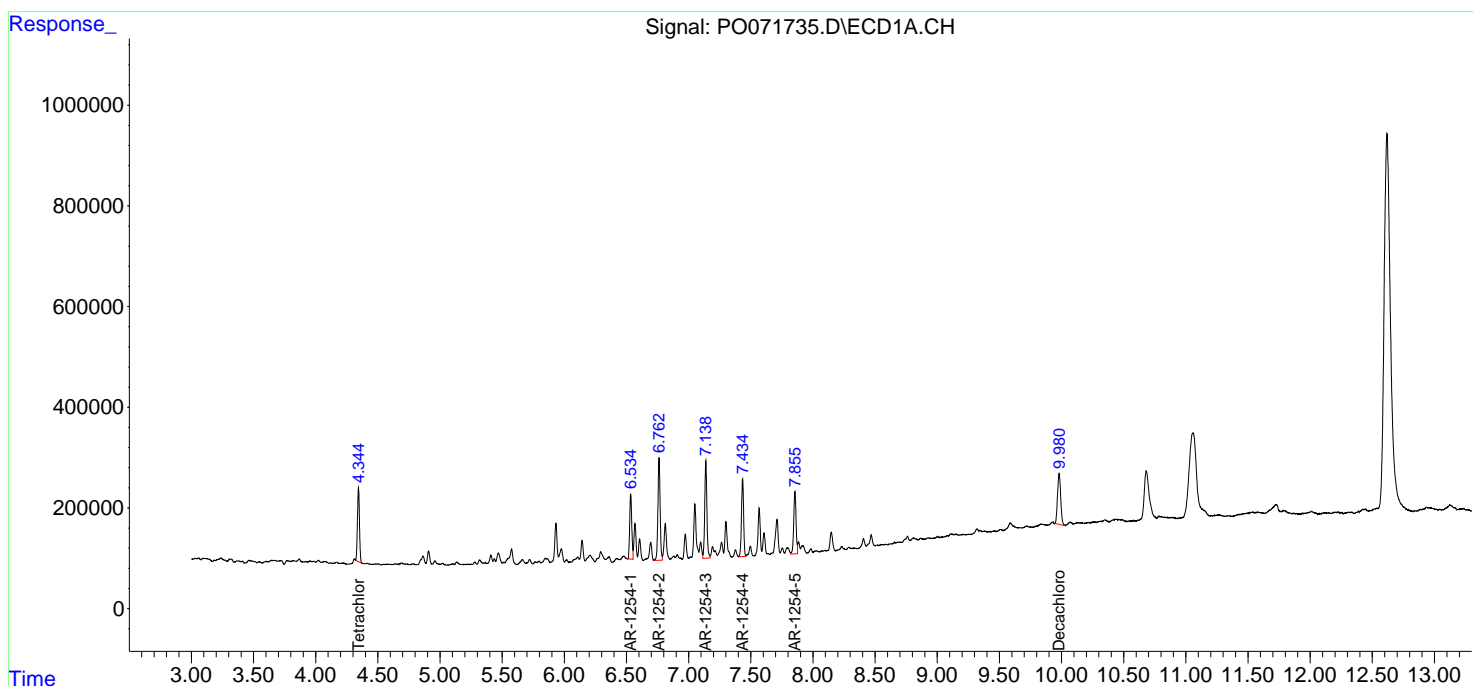
Data Path : Z:\pestpcbsrv\HPCHEM1\ECD_0\Data\P0092920\
 Data File : P0071735.D
 Signal(s) : Signal #1: ECD1A.CH Signal #2: ECD2B.CH
 Acq On : 29 Sep 2020 16:37
 Operator : DD\AJ
 Sample : L4157-01
 Misc :
 ALS Vial : 16 Sample Multiplier: 1

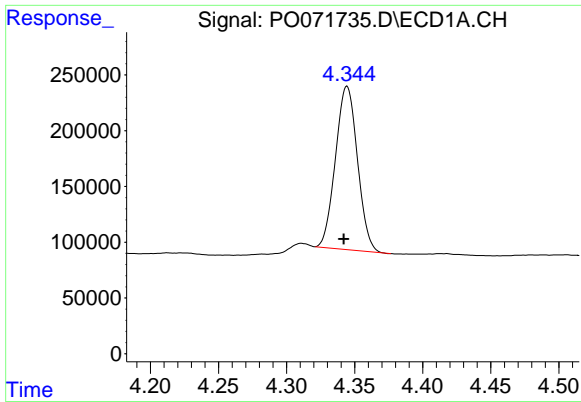
Instrument :
 ECD_O
Client Sampled :
 KMA9581-END-1

Manual Integrations
APPROVED
 Ankita
 9/30/2020 2:29:07 PM

Integration File signal 1: autoint1.e
 Integration File signal 2: autoint2.e
 Quant Time: Sep 30 04:32:21 2020
 Quant Method : Z:\pestpcbsrv\HPCHEM1\ECD_0\methods\P0092320.M
 Quant Title : GC EXTRACTABLES
 QLast Update : Wed Sep 23 08:07:44 2020
 Response via : Initial Calibration
 Integrator: ChemStation 6890 Scale Mode: Small noise peaks clipped

Volume Inj. : 2 µl
 Signal #1 Phase : ZB-MR1 Signal #2 Phase: ZB-MR2
 Signal #1 Info : 30Mx0.32mmx 0.50µ Signal #2 Info : 30M x 0.32mm x 0.25µm

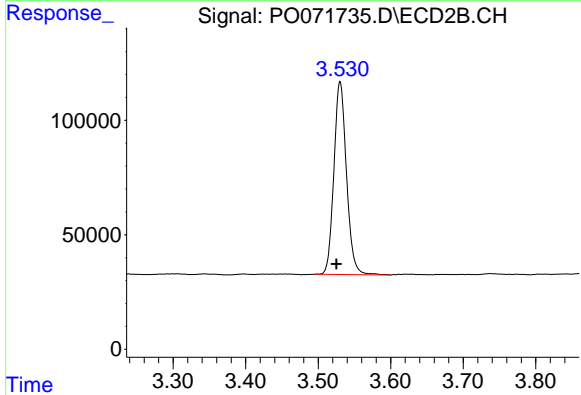




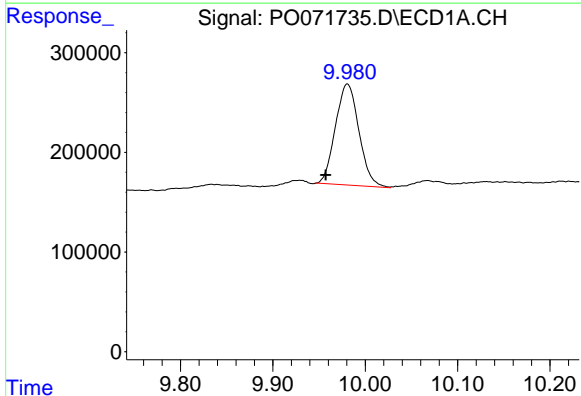
#1 Tetrachloro-m-xylene
 R.T.: 4.344 min
 Delta R.T.: 0.002 min
 Response: 1645921
 Conc: 19.18 ng/ml

Instrument :
 ECD_O
 ClientSampleId :
 KMA9581-END-1

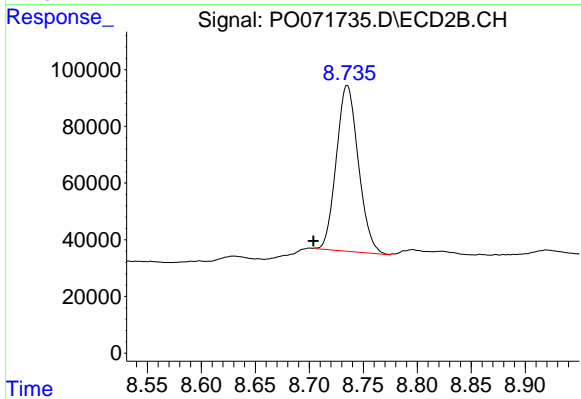
Manual Integrations
 APPROVED
 Ankita
 9/30/2020 2:29:07 PM



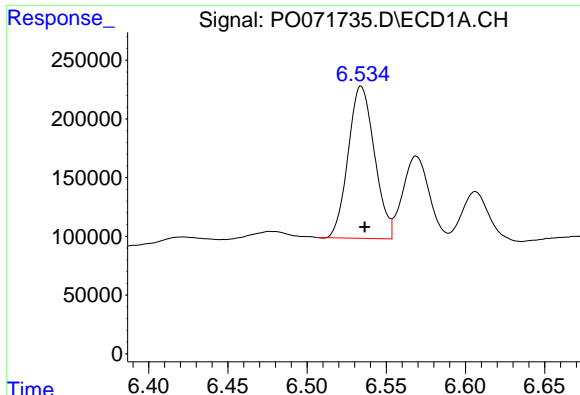
#1 Tetrachloro-m-xylene
 R.T.: 3.530 min
 Delta R.T.: 0.005 min
 Response: 1015487
 Conc: 24.66 ng/ml



#2 Decachlorobiphenyl
 R.T.: 9.980 min
 Delta R.T.: 0.023 min
 Response: 1790831
 Conc: 15.59 ng/ml m



#2 Decachlorobiphenyl
 R.T.: 8.735 min
 Delta R.T.: 0.031 min
 Response: 830383
 Conc: 13.66 ng/ml m



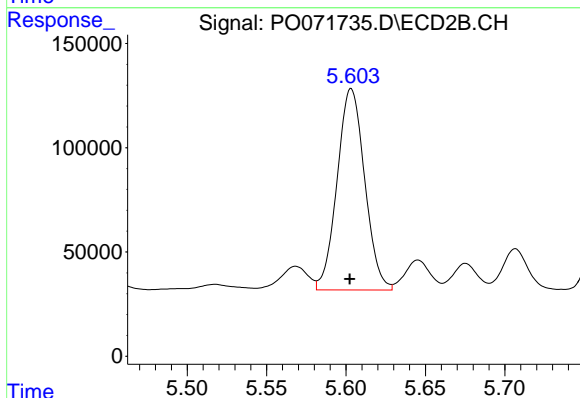
#26 AR-1254-1

R.T.: 6.534 min
Delta R.T.: -0.002 min
Response: 1497360
Conc: 408.90 ng/ml

Instrument :
ECD_O
ClientSampled :
KMA9581-END-1

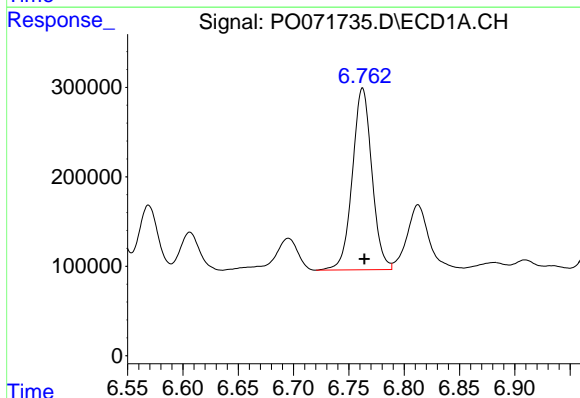
Manual Integrations
APPROVED

Ankita
9/30/2020 2:29:07 PM



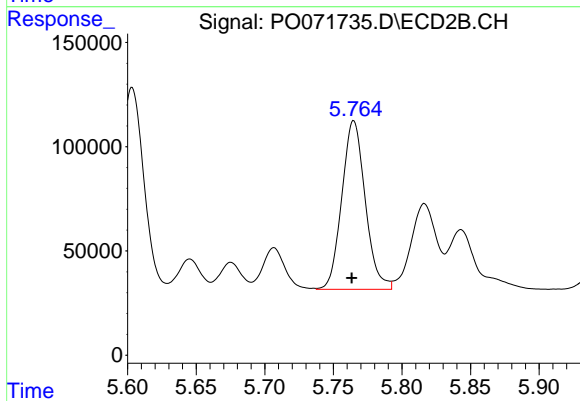
#26 AR-1254-1

R.T.: 5.603 min
Delta R.T.: 0.000 min
Response: 1167243
Conc: 492.87 ng/ml



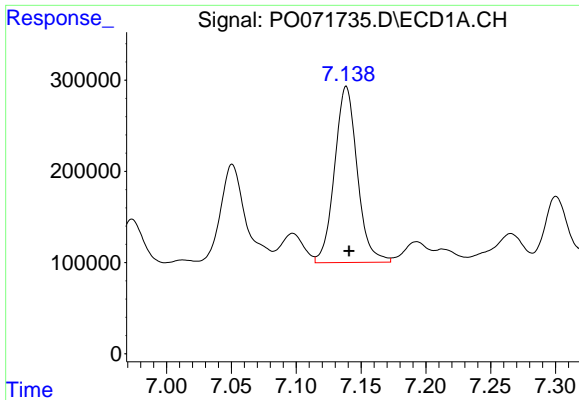
#27 AR-1254-2

R.T.: 6.762 min
Delta R.T.: -0.002 min
Response: 2497208
Conc: 414.18 ng/ml



#27 AR-1254-2

R.T.: 5.765 min
Delta R.T.: 0.001 min
Response: 962462
Conc: 459.52 ng/ml

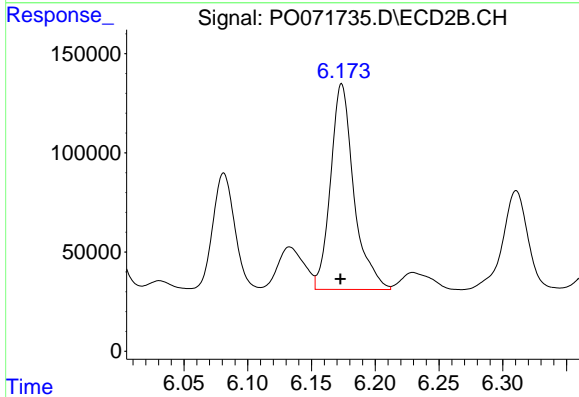


#28 AR-1254-3

R.T.: 7.139 min
 Delta R.T.: -0.002 min
 Response: 2352876
 Conc: 371.62 ng/ml

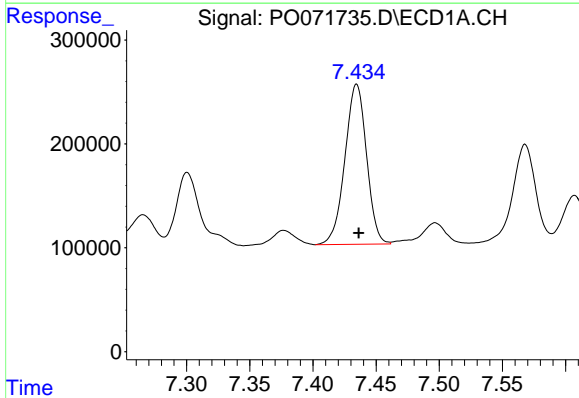
Instrument :
 ECD_O
 ClientSampled :
 KMA9581-END-1

Manual Integrations
APPROVED
 Ankita
 9/30/2020 2:29:07 PM



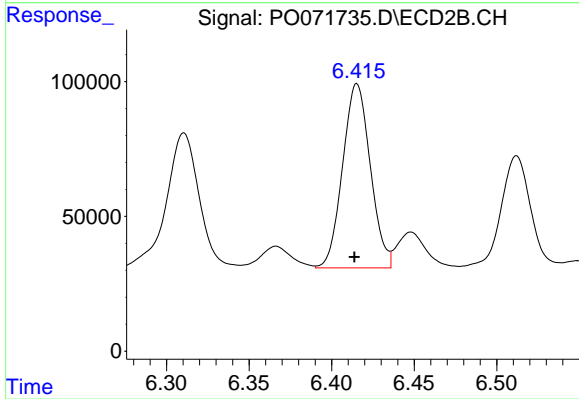
#28 AR-1254-3

R.T.: 6.174 min
 Delta R.T.: 0.000 min
 Response: 1321679
 Conc: 390.59 ng/ml



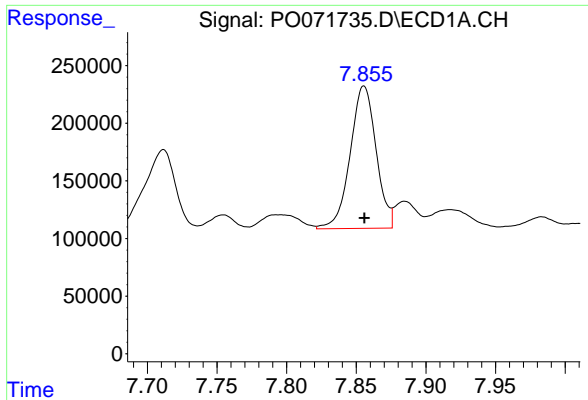
#29 AR-1254-4

R.T.: 7.435 min
 Delta R.T.: -0.002 min
 Response: 1838660
 Conc: 298.44 ng/ml



#29 AR-1254-4

R.T.: 6.415 min
 Delta R.T.: 0.002 min
 Response: 798342
 Conc: 335.33 ng/ml



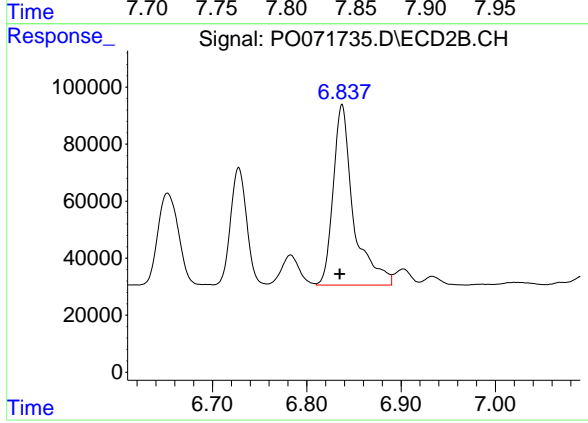
#30 AR-1254-5

R.T.: 7.856 min
Delta R.T.: 0.000 min
Response: 1601168
Conc: 269.40 ng/ml

Instrument :
ECD_O
ClientSampleId :
KMA9581-END-1

Manual Integrations
APPROVED

Ankita
9/30/2020 2:29:07 PM



#30 AR-1254-5

R.T.: 6.837 min
Delta R.T.: 0.002 min
Response: 941723
Conc: 291.15 ng/ml