

Data Path : Z:\pestpcbsrv\HPCHEM1\ECD\_0\Data\P0093020\  
 Data File : P0071795.D  
 Signal(s) : Signal #1: ECD1A.CH Signal #2: ECD2B.CH  
 Acq On : 01 Oct 2020 1:17  
 Operator : DD\AJ  
 Sample : L4181-07  
 Misc :  
 ALS Vial : 31 Sample Multiplier: 1

Instrument :  
 ECD\_O  
 ClientSampled :

Integration File signal 1: autoint1.e  
 Integration File signal 2: autoint2.e  
 Quant Time: Oct 01 01:54:46 2020  
 Quant Method : Z:\pestpcbsrv\HPCHEM1\ECD\_0\methods\P0092320.M  
 Quant Title : GC EXTRACTABLES  
 QLast Update : Wed Sep 23 08:07:44 2020  
 Response via : Initial Calibration  
 Integrator: ChemStation 6890 Scale Mode: Small noise peaks clipped

Volume Inj. : 2 µl  
 Signal #1 Phase : ZB-MR1 Signal #2 Phase: ZB-MR2  
 Signal #1 Info : 30Mx0.32mmx 0.50µ Signal #2 Info : 30M x 0.32mm x 0.25µm

Compound	RT#1	RT#2	Resp#1	Resp#2	ng/ml	ng/ml
System Monitoring Compounds						
1) SA Tetrachlo...	4.348	3.531	1087908	568662	12.678	13.807
2) SA Decachlor...	9.959	8.704	1724422	906000	15.010	14.905
Target Compounds						
3) L1 AR-1016-1	5.637	4.738	514925	50478	141.390	28.609 #
4) L1 AR-1016-2	5.668	4.770	88324	91011	16.729	36.669 #
5) L1 AR-1016-3	5.744	4.970f	88344	93292	27.997	69.264 #
6) L1 AR-1016-4	5.828	0.000	90478	0	33.777	N.D. #
7) L1 AR-1016-5	6.156	5.217	35378	44965	13.672	31.805 #
8) L2 AR-1221-1	4.601	3.793f	72525	23873	81.492	50.426 #
9) L2 AR-1221-2	4.684	3.873	34984	52172	52.621	148.703 #
10) L2 AR-1221-3	4.804f	3.950	218558	224285	103.023	205.340 #
11) L3 AR-1232-1	4.804f	3.950	218558	224285	121.509	240.175 #
12) L3 AR-1232-2	5.343	4.770	300883	91011	311.036	89.233 #
13) L3 AR-1232-3	5.668	4.970f	88324	93292	41.853	171.432 #
14) L3 AR-1232-4	5.828	5.055	90478	78436	86.951	174.462 #
15) L3 AR-1232-5	0.000	5.217	0	44965	N.D.	84.464 #
16) L4 AR-1242-1	5.637	4.738	514925	50478	200.360	40.215 #
17) L4 AR-1242-2	5.668	4.770	88324	91011	23.710	51.982 #
18) L4 AR-1242-3	5.744	4.970f	88344	93292	39.303	97.104 #
19) L4 AR-1242-4	5.828	5.055	90478	78436	48.049	89.815 #
20) L4 AR-1242-5	6.579f	5.629f	2421619	385405	1056.401	307.797 #
21) L5 AR-1248-1	5.637	4.738	514925	50478	286.363	55.541 #
23) L5 AR-1248-3	6.156	5.055	35378	78436	12.116	64.887 #
24) L5 AR-1248-4	6.579	5.217	2421619	44965	625.980	29.641 #
25) L5 AR-1248-5	6.579f	5.629f	2421619	385405	671.811	236.476 #
26) L6 AR-1254-1	0.000	5.629f	0	385405	N.D.	162.738 #
28) L6 AR-1254-3	7.157f	6.195f	94363	45200	14.904	13.358
29) L6 AR-1254-4	7.433	0.000	212476	0	34.488	N.D. #
30) L6 AR-1254-5	7.873f	0.000	195847	0	32.952	N.D. #
31) L7 AR-1260-1	0.000	6.290f	0	40492	N.D.	14.632 #
32) L7 AR-1260-2	0.000	6.538f	0	25358	N.D.	7.174 #
33) L7 AR-1260-3	7.923	0.000	65461	0	9.091	N.D. #
34) L7 AR-1260-4	8.182f	0.000	62196	0	9.388	N.D. #
35) L7 AR-1260-5	0.000	7.375	0	109968	N.D.	14.867 #
36) L8 AR-1262-1	7.923	0.000	65461	0	6.930	N.D. #
37) L8 AR-1262-2	0.000	7.375	0	109968	N.D.	15.921 #
39) L8 AR-1262-4	8.816	7.708f	157890	156032	41.591	29.472 #
42) L9 AR-1268-2	8.816	7.708f	157890	156032	10.300	20.558 #
43) L9 AR-1268-3	0.000	7.930	0	33621	N.D.	5.178 #
45) L9 AR-1268-5	9.705	0.000	60226	0	1.554	N.D. #

Data Path : Z:\pestpcbsrv\HPCHEM1\ECD\_0\Data\P0093020\  
Data File : P0071795.D  
Signal(s) : Signal #1: ECD1A.CH Signal #2: ECD2B.CH  
Acq On : 01 Oct 2020 1:17  
Operator : DD\AJ  
Sample : L4181-07  
Misc :  
ALS Vial : 31 Sample Multiplier: 1

Instrument :  
ECD\_O  
ClientSampleId :

Integration File signal 1: autoint1.e  
Integration File signal 2: autoint2.e  
Quant Time: Oct 01 01:54:46 2020  
Quant Method : Z:\pestpcbsrv\HPCHEM1\ECD\_0\methods\P0092320.M  
Quant Title : GC EXTRACTABLES  
QLast Update : Wed Sep 23 08:07:44 2020  
Response via : Initial Calibration  
Integrator: ChemStation 6890 Scale Mode: Small noise peaks clipped

Volume Inj. : 2 µl  
Signal #1 Phase : ZB-MR1 Signal #2 Phase: ZB-MR2  
Signal #1 Info : 30Mx0.32mmx 0.50µ Signal #2 Info : 30M x 0.32mm x 0.25µm

Compound	RT#1	RT#2	Resp#1	Resp#2	ng/ml	ng/ml
----------	------	------	--------	--------	-------	-------

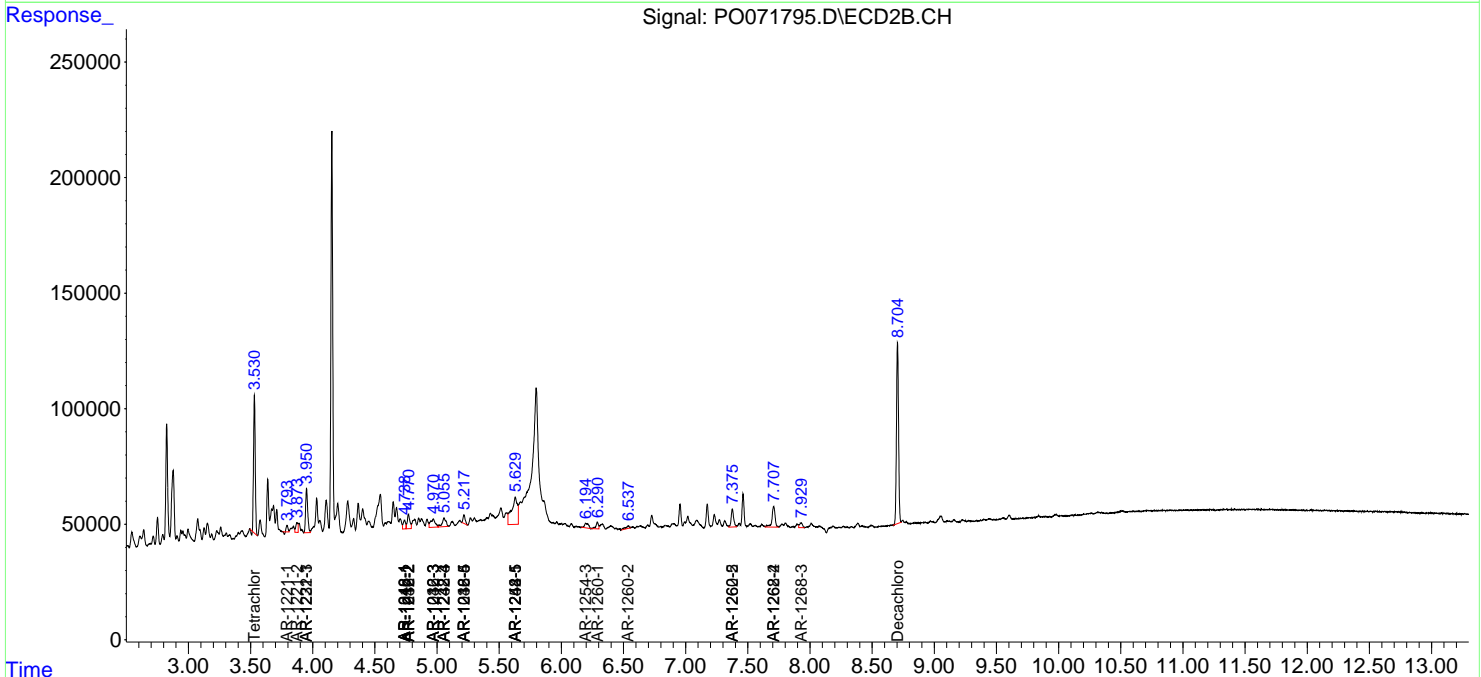
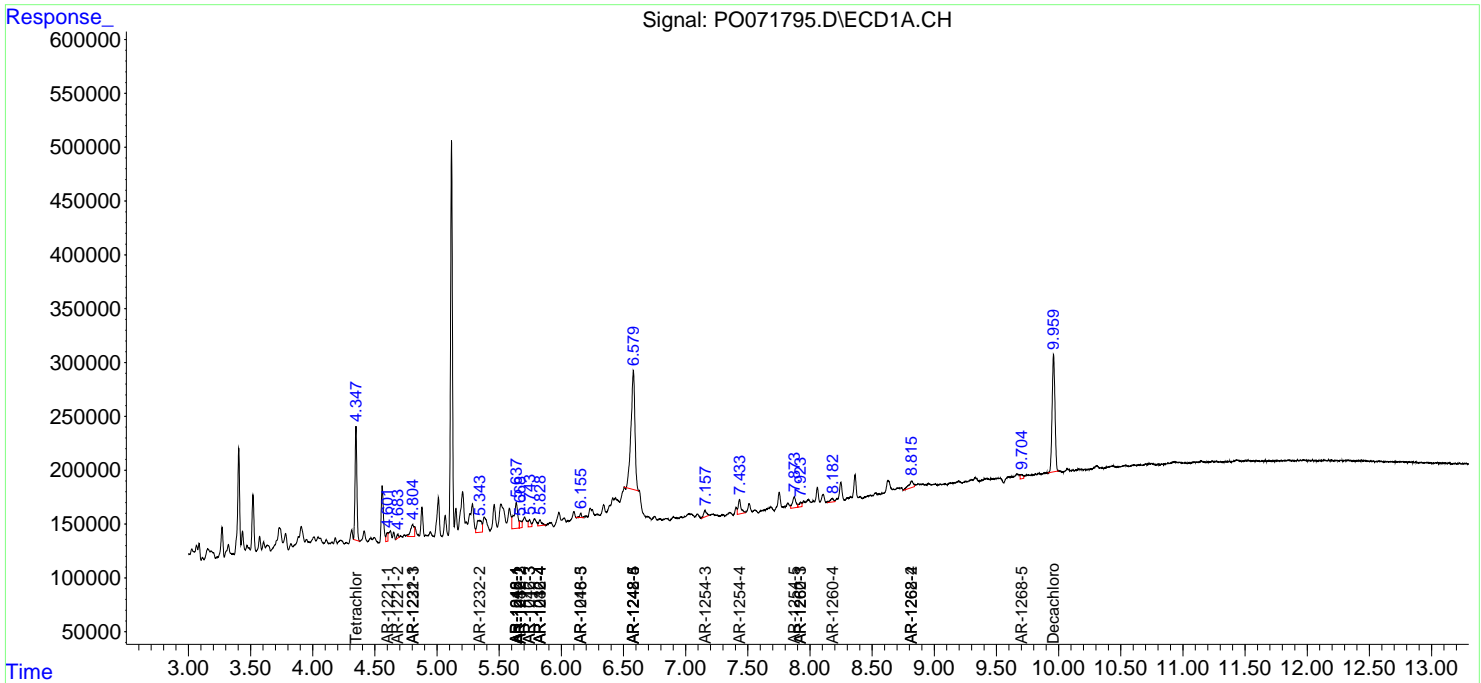
-----  
(f)=RT Delta > 1/2 Window (#)=Amounts differ by > 25% (m)=manual int.

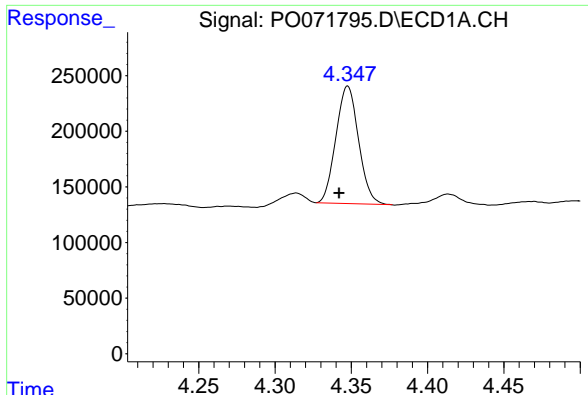
Data Path : Z:\pestpcbsrv\HPCHEM1\ECD\_O\Data\P0093020\  
 Data File : P0071795.D  
 Signal(s) : Signal #1: ECD1A.CH Signal #2: ECD2B.CH  
 Acq On : 01 Oct 2020 1:17  
 Operator : DD\AJ  
 Sample : L4181-07  
 Misc :  
 ALS Vial : 31 Sample Multiplier: 1

Instrument :  
 ECD\_O  
 ClientSampled :

Integration File signal 1: autoint1.e  
 Integration File signal 2: autoint2.e  
 Quant Time: Oct 01 01:54:46 2020  
 Quant Method : Z:\pestpcbsrv\HPCHEM1\ECD\_O\methods\P0092320.M  
 Quant Title : GC EXTRACTABLES  
 QLast Update : Wed Sep 23 08:07:44 2020  
 Response via : Initial Calibration  
 Integrator: ChemStation 6890 Scale Mode: Small noise peaks clipped

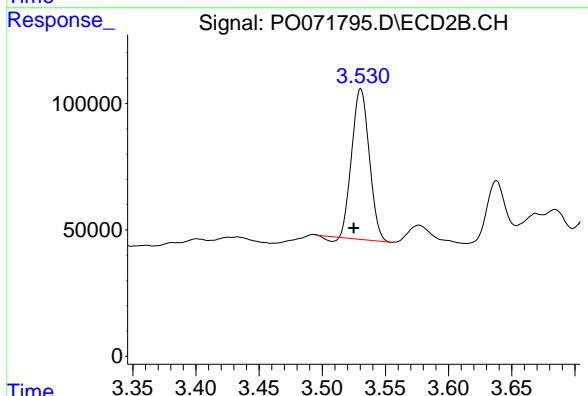
Volume Inj. : 2 µl  
 Signal #1 Phase : ZB-MR1 Signal #2 Phase: ZB-MR2  
 Signal #1 Info : 30Mx0.32mmx 0.50µ Signal #2 Info : 30M x 0.32mm x 0.25µm



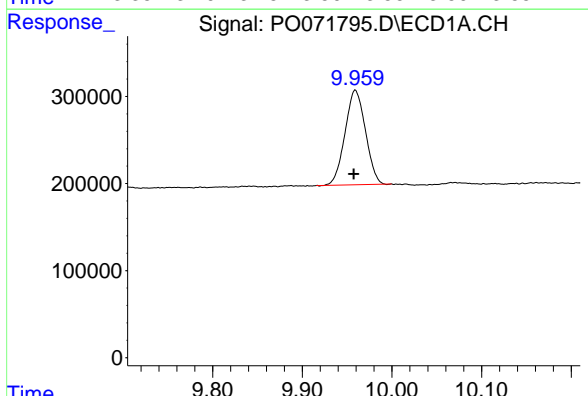


#1 Tetrachloro-m-xylene  
 R.T.: 4.348 min  
 Delta R.T.: 0.006 min  
 Response: 1087908  
 Conc: 12.68 ng/ml

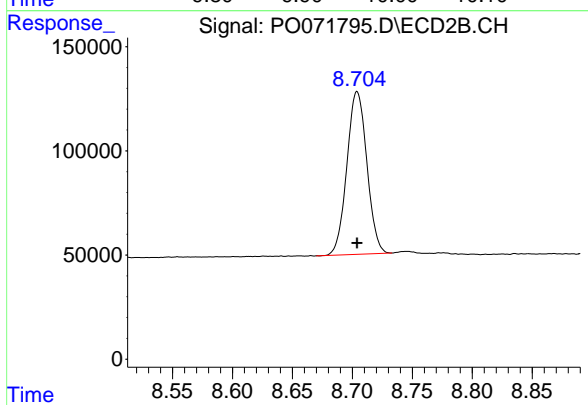
Instrument :  
 ECD\_O  
 ClientSampleId :



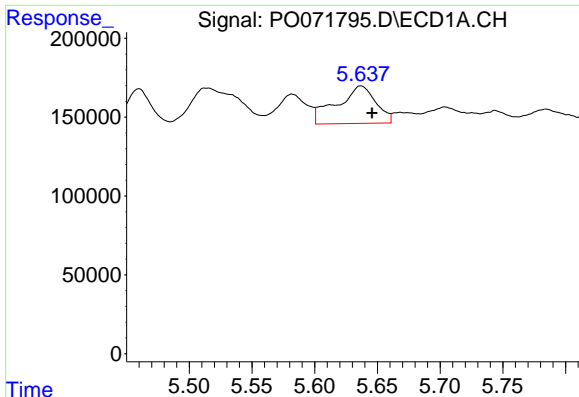
#1 Tetrachloro-m-xylene  
 R.T.: 3.531 min  
 Delta R.T.: 0.006 min  
 Response: 568662  
 Conc: 13.81 ng/ml



#2 Decachlorobiphenyl  
 R.T.: 9.959 min  
 Delta R.T.: 0.002 min  
 Response: 1724422  
 Conc: 15.01 ng/ml



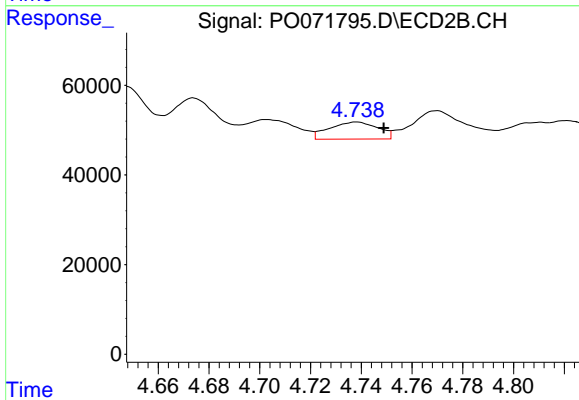
#2 Decachlorobiphenyl  
 R.T.: 8.704 min  
 Delta R.T.: 0.000 min  
 Response: 906000  
 Conc: 14.90 ng/ml



#3 AR-1016-1

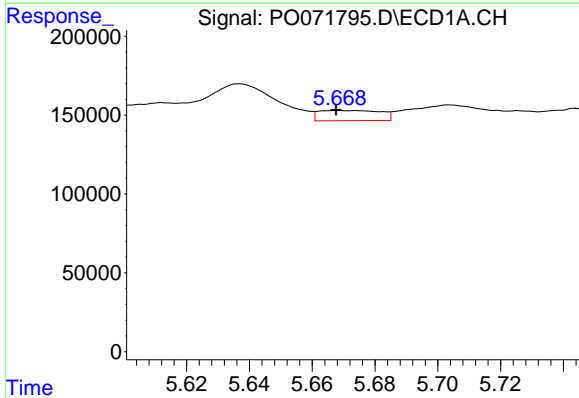
R.T.: 5.637 min  
 Delta R.T.: -0.009 min  
 Response: 514925  
 Conc: 141.39 ng/ml

Instrument :  
 ECD\_O  
 ClientSampleId :



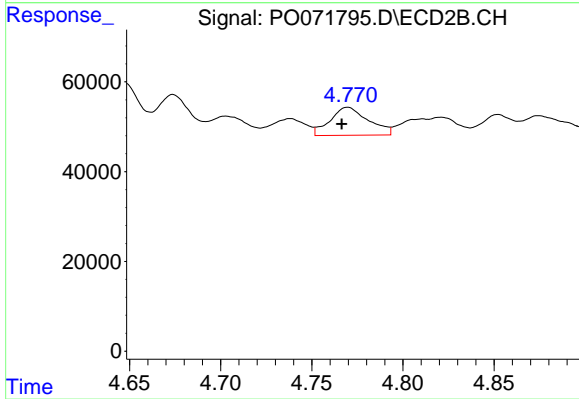
#3 AR-1016-1

R.T.: 4.738 min  
 Delta R.T.: -0.011 min  
 Response: 50478  
 Conc: 28.61 ng/ml



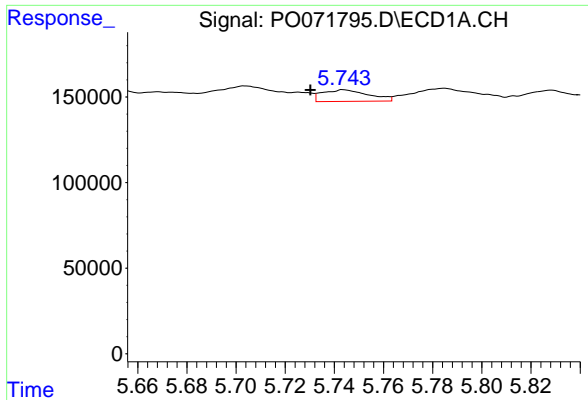
#4 AR-1016-2

R.T.: 5.668 min  
 Delta R.T.: 0.000 min  
 Response: 88324  
 Conc: 16.73 ng/ml



#4 AR-1016-2

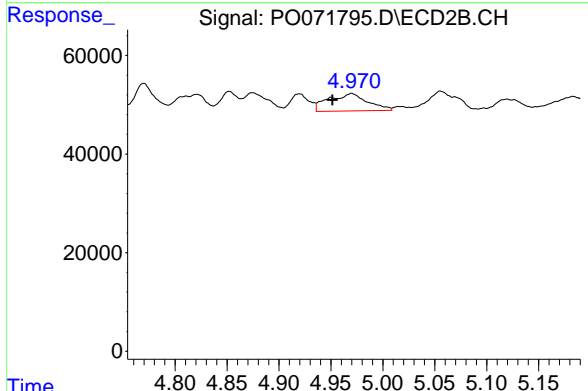
R.T.: 4.770 min  
 Delta R.T.: 0.003 min  
 Response: 91011  
 Conc: 36.67 ng/ml



#5 AR-1016-3

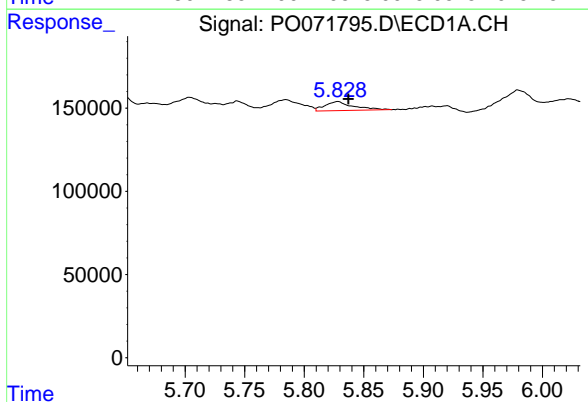
R.T.: 5.744 min  
 Delta R.T.: 0.014 min  
 Response: 88344  
 Conc: 28.00 ng/ml

Instrument :  
 ECD\_O  
 ClientSampled :



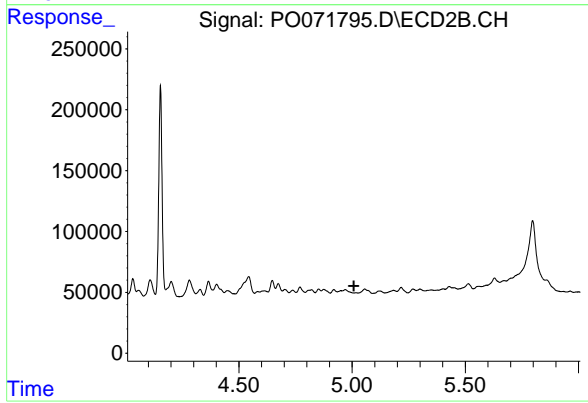
#5 AR-1016-3

R.T.: 4.970 min  
 Delta R.T.: 0.019 min  
 Response: 93292  
 Conc: 69.26 ng/ml



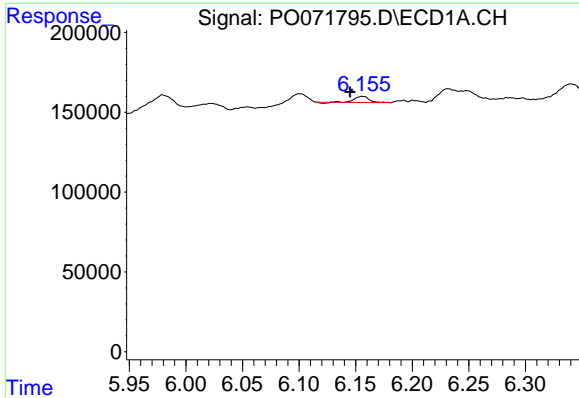
#6 AR-1016-4

R.T.: 5.828 min  
 Delta R.T.: -0.009 min  
 Response: 90478  
 Conc: 33.78 ng/ml



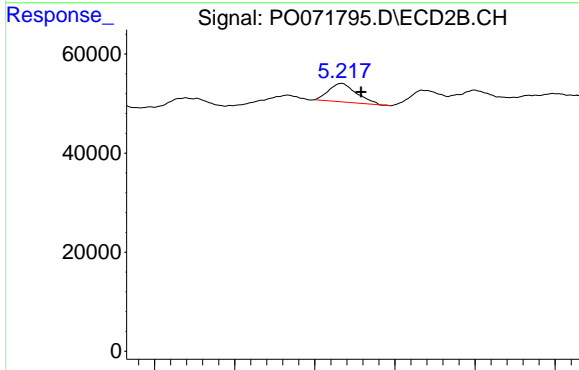
#6 AR-1016-4

R.T.: 0.000 min  
 Exp R.T. : 5.008 min  
 Response: 0  
 Conc: N.D.

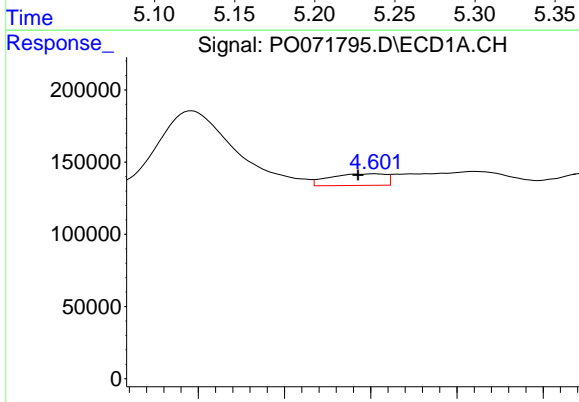


#7 AR-1016-5  
 R.T.: 6.156 min  
 Delta R.T.: 0.011 min  
 Response: 35378  
 Conc: 13.67 ng/ml

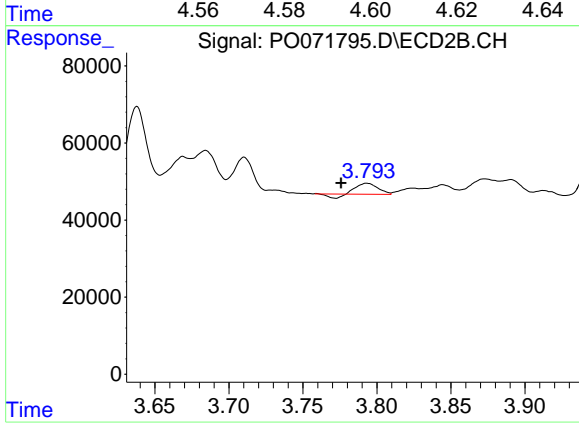
Instrument :  
 ECD\_O  
 ClientSampleId :



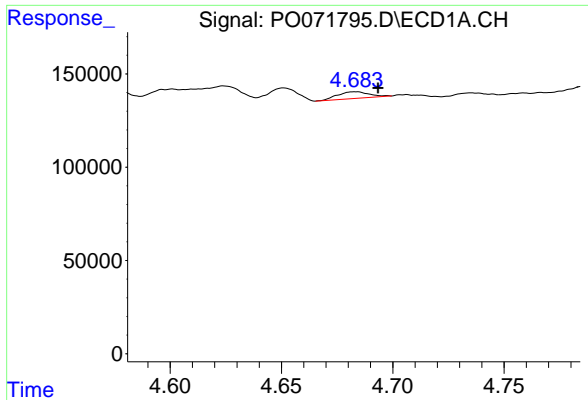
#7 AR-1016-5  
 R.T.: 5.217 min  
 Delta R.T.: -0.012 min  
 Response: 44965  
 Conc: 31.81 ng/ml



#8 AR-1221-1  
 R.T.: 4.601 min  
 Delta R.T.: 0.004 min  
 Response: 72525  
 Conc: 81.49 ng/ml



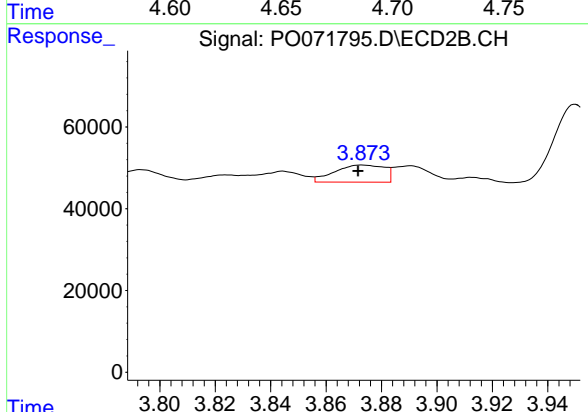
#8 AR-1221-1  
 R.T.: 3.793 min  
 Delta R.T.: 0.017 min  
 Response: 23873  
 Conc: 50.43 ng/ml



#9 AR-1221-2

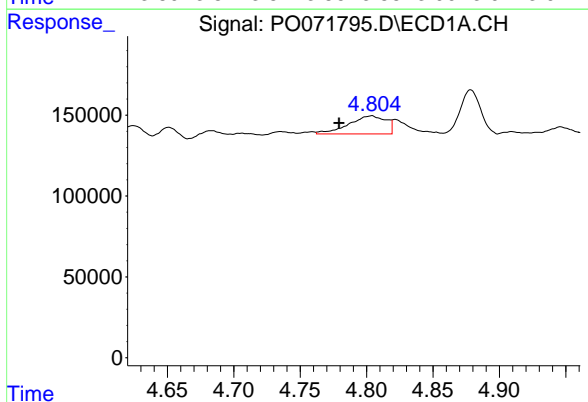
R.T.: 4.684 min  
 Delta R.T.: -0.010 min  
 Response: 34984  
 Conc: 52.62 ng/ml

Instrument :  
 ECD\_O  
 ClientSampleId :



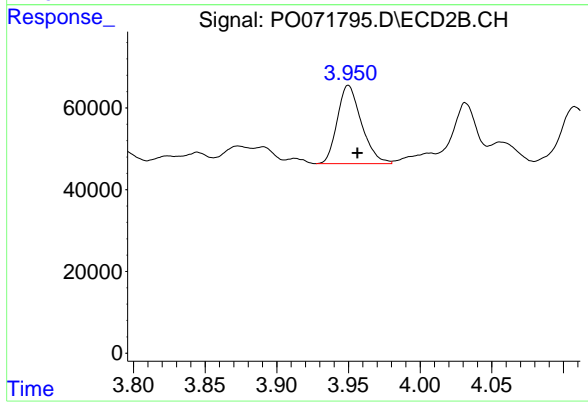
#9 AR-1221-2

R.T.: 3.873 min  
 Delta R.T.: 0.001 min  
 Response: 52172  
 Conc: 148.70 ng/ml



#10 AR-1221-3

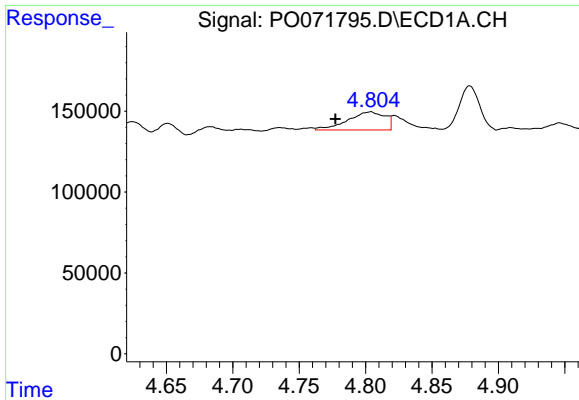
R.T.: 4.804 min  
 Delta R.T.: 0.025 min  
 Response: 218558  
 Conc: 103.02 ng/ml



#10 AR-1221-3

R.T.: 3.950 min  
 Delta R.T.: -0.006 min  
 Response: 224285  
 Conc: 205.34 ng/ml

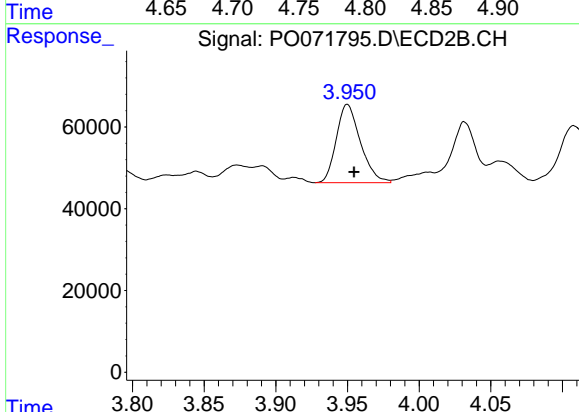




#11 AR-1232-1

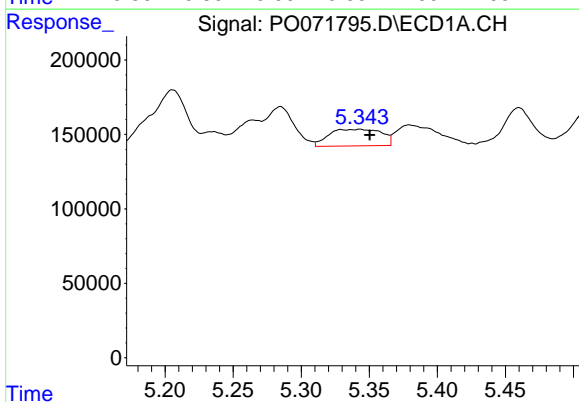
R.T.: 4.804 min  
 Delta R.T.: 0.027 min  
 Response: 218558  
 Conc: 121.51 ng/ml

Instrument :  
 ECD\_O  
 ClientSampleId :



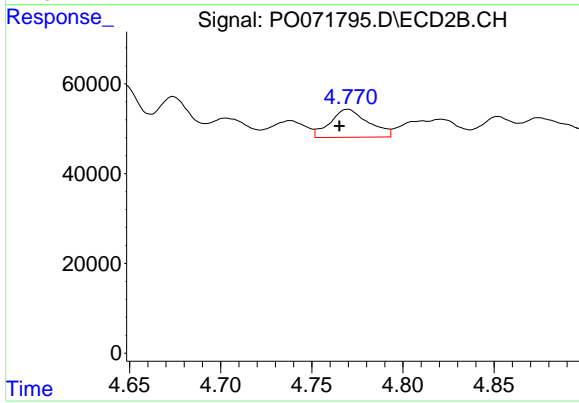
#11 AR-1232-1

R.T.: 3.950 min  
 Delta R.T.: -0.005 min  
 Response: 224285  
 Conc: 240.18 ng/ml



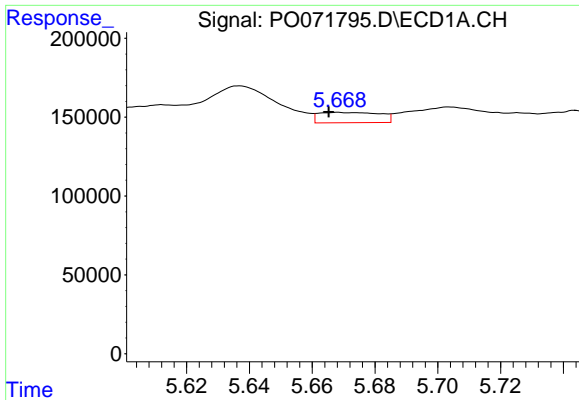
#12 AR-1232-2

R.T.: 5.343 min  
 Delta R.T.: -0.007 min  
 Response: 300883  
 Conc: 311.04 ng/ml



#12 AR-1232-2

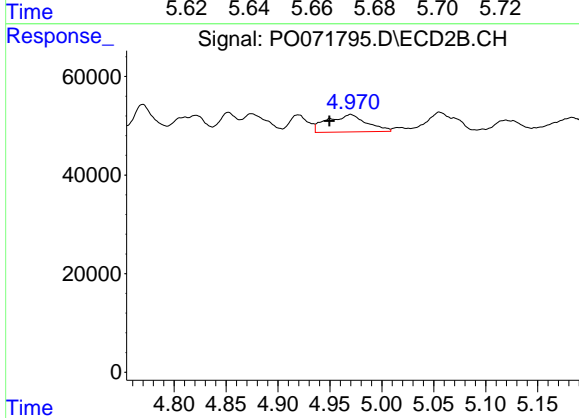
R.T.: 4.770 min  
 Delta R.T.: 0.005 min  
 Response: 91011  
 Conc: 89.23 ng/ml



#13 AR-1232-3

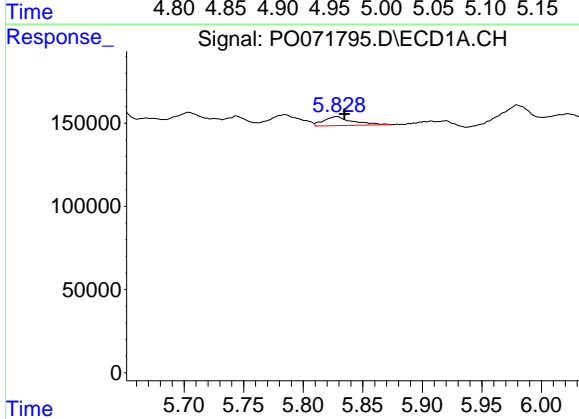
R.T.: 5.668 min  
 Delta R.T.: 0.003 min  
 Response: 88324  
 Conc: 41.85 ng/ml

Instrument :  
 ECD\_O  
 ClientSampleId :



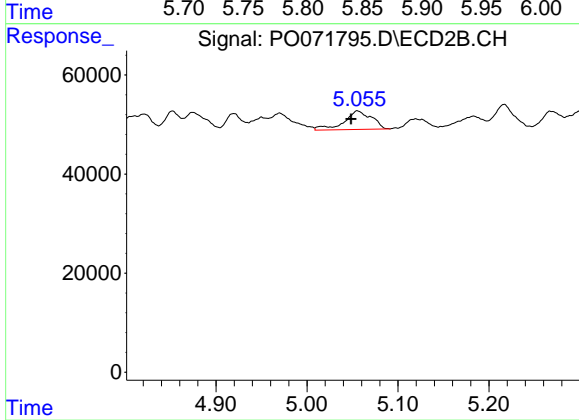
#13 AR-1232-3

R.T.: 4.970 min  
 Delta R.T.: 0.020 min  
 Response: 93292  
 Conc: 171.43 ng/ml



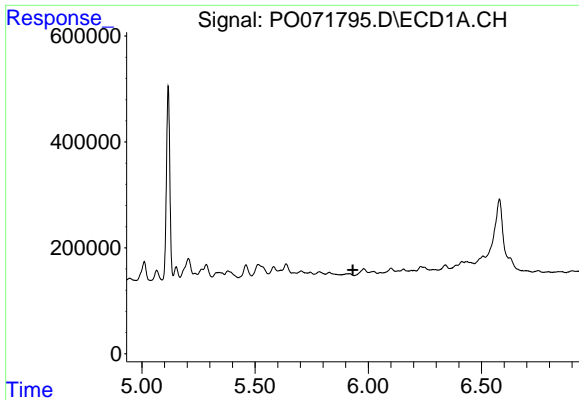
#14 AR-1232-4

R.T.: 5.828 min  
 Delta R.T.: -0.006 min  
 Response: 90478  
 Conc: 86.95 ng/ml



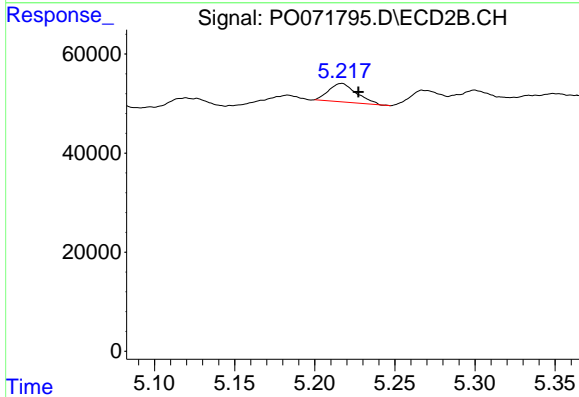
#14 AR-1232-4

R.T.: 5.055 min  
 Delta R.T.: 0.007 min  
 Response: 78436  
 Conc: 174.46 ng/ml

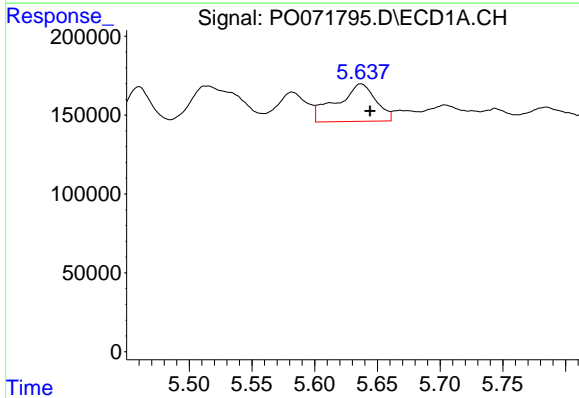


#15 AR-1232-5  
 R.T.: 0.000 min  
 Exp R.T.: 5.932 min  
 Response: 0  
 Conc: N.D.

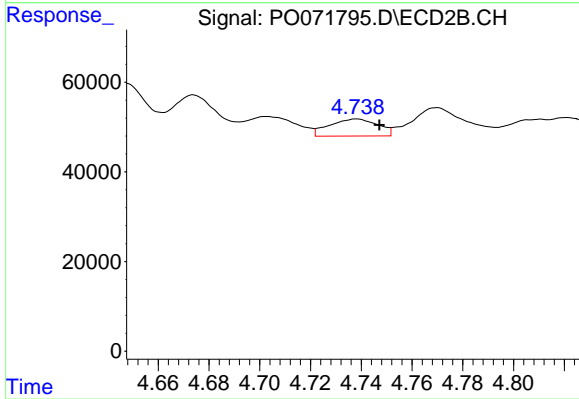
Instrument :  
 ECD\_O  
 ClientSampled :



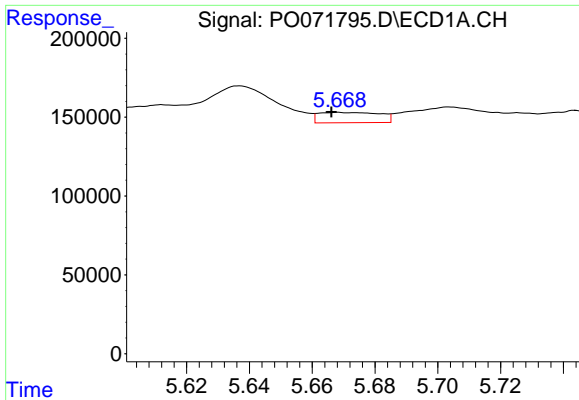
#15 AR-1232-5  
 R.T.: 5.217 min  
 Delta R.T.: -0.011 min  
 Response: 44965  
 Conc: 84.46 ng/ml



#16 AR-1242-1  
 R.T.: 5.637 min  
 Delta R.T.: -0.007 min  
 Response: 514925  
 Conc: 200.36 ng/ml



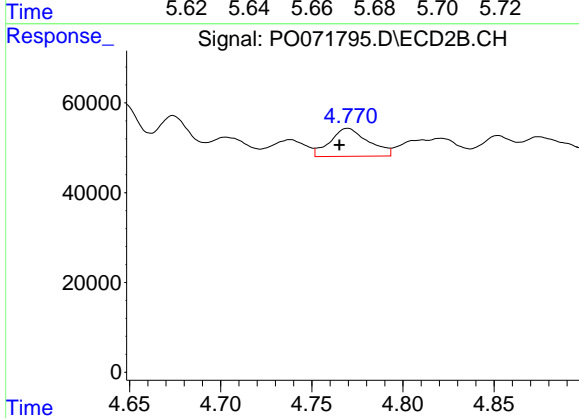
#16 AR-1242-1  
 R.T.: 4.738 min  
 Delta R.T.: -0.009 min  
 Response: 50478  
 Conc: 40.21 ng/ml



#17 AR-1242-2

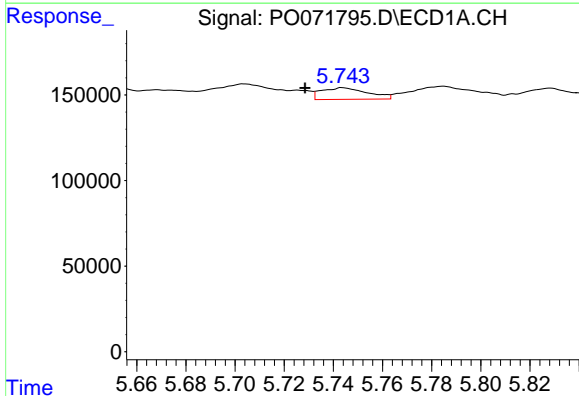
R.T.: 5.668 min  
 Delta R.T.: 0.002 min  
 Response: 88324  
 Conc: 23.71 ng/ml

Instrument :  
 ECD\_O  
 ClientSampled :



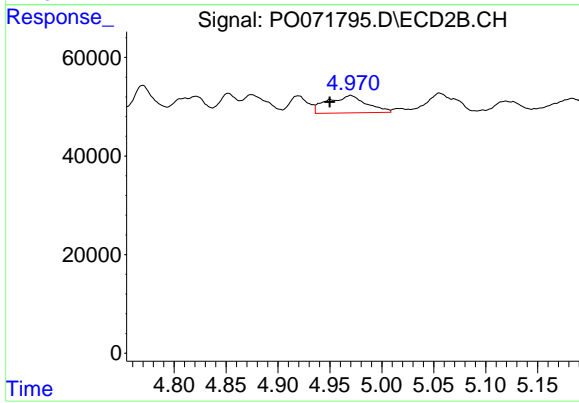
#17 AR-1242-2

R.T.: 4.770 min  
 Delta R.T.: 0.005 min  
 Response: 91011  
 Conc: 51.98 ng/ml



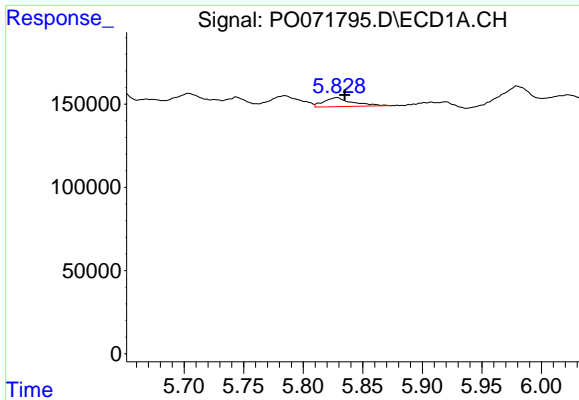
#18 AR-1242-3

R.T.: 5.744 min  
 Delta R.T.: 0.015 min  
 Response: 88344  
 Conc: 39.30 ng/ml



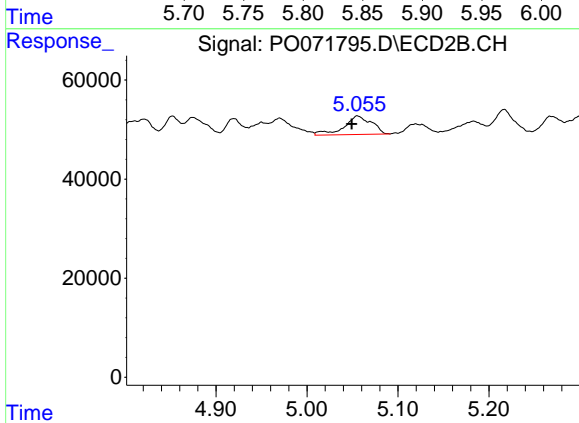
#18 AR-1242-3

R.T.: 4.970 min  
 Delta R.T.: 0.020 min  
 Response: 93292  
 Conc: 97.10 ng/ml

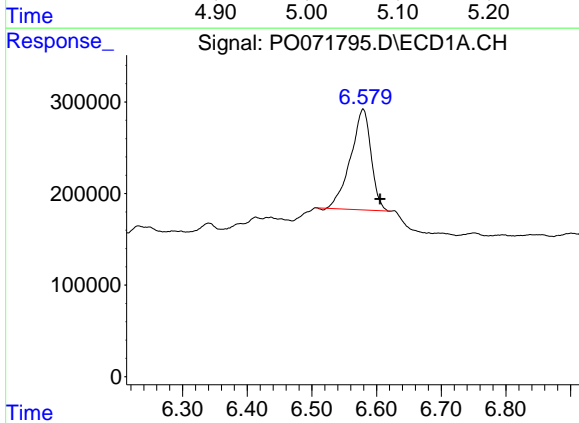


#19 AR-1242-4  
 R.T.: 5.828 min  
 Delta R.T.: -0.007 min  
 Response: 90478  
 Conc: 48.05 ng/ml

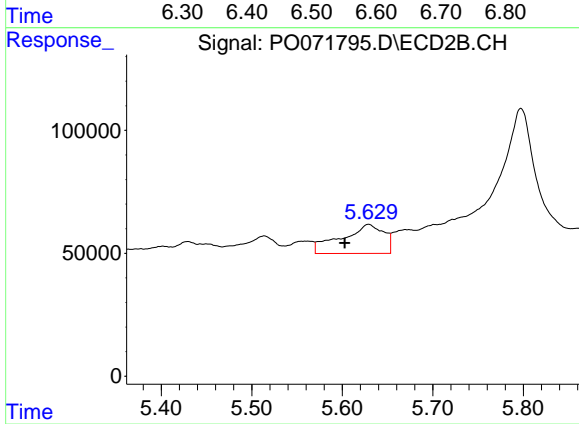
Instrument :  
 ECD\_O  
 ClientSampleId :



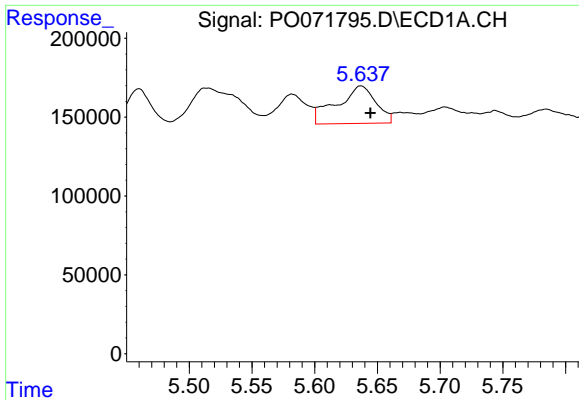
#19 AR-1242-4  
 R.T.: 5.055 min  
 Delta R.T.: 0.007 min  
 Response: 78436  
 Conc: 89.82 ng/ml



#20 AR-1242-5  
 R.T.: 6.579 min  
 Delta R.T.: -0.027 min  
 Response: 2421619  
 Conc: 1056.40 ng/ml

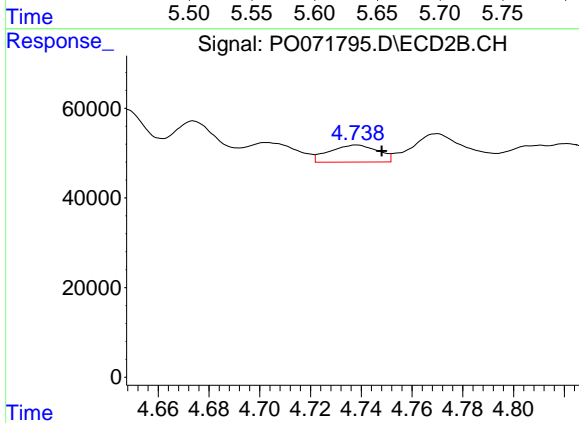


#20 AR-1242-5  
 R.T.: 5.629 min  
 Delta R.T.: 0.026 min  
 Response: 385405  
 Conc: 307.80 ng/ml

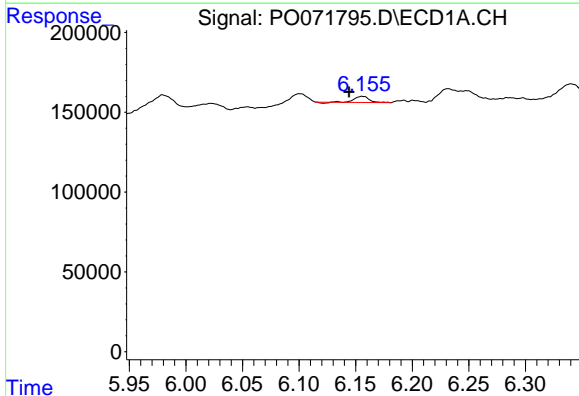


#21 AR-1248-1  
 R.T.: 5.637 min  
 Delta R.T.: -0.008 min  
 Response: 514925  
 Conc: 286.36 ng/ml

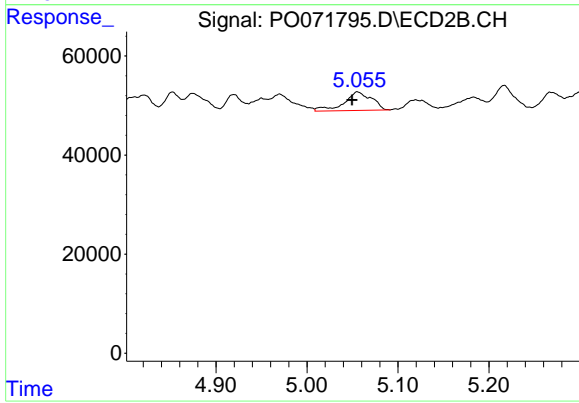
Instrument :  
 ECD\_O  
 ClientSampleId :



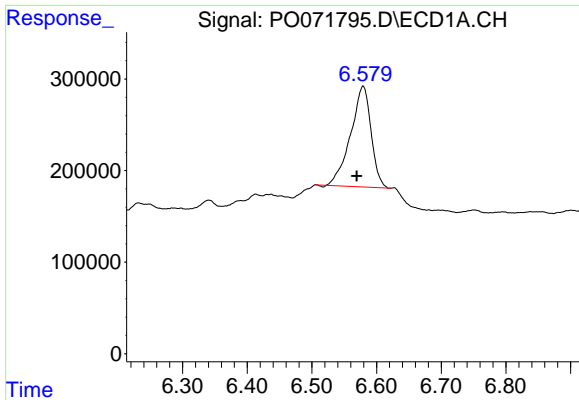
#21 AR-1248-1  
 R.T.: 4.738 min  
 Delta R.T.: -0.010 min  
 Response: 50478  
 Conc: 55.54 ng/ml



#23 AR-1248-3  
 R.T.: 6.156 min  
 Delta R.T.: 0.012 min  
 Response: 35378  
 Conc: 12.12 ng/ml



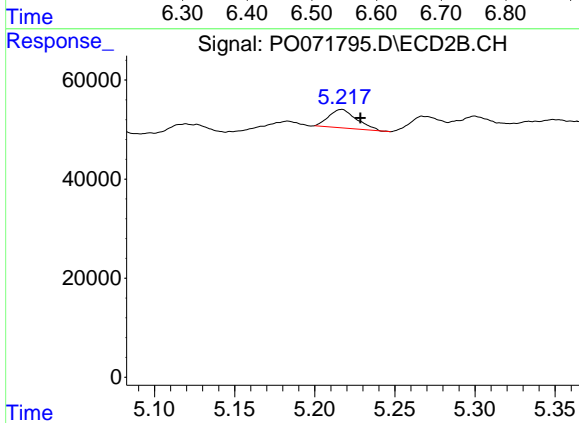
#23 AR-1248-3  
 R.T.: 5.055 min  
 Delta R.T.: 0.006 min  
 Response: 78436  
 Conc: 64.89 ng/ml



#24 AR-1248-4

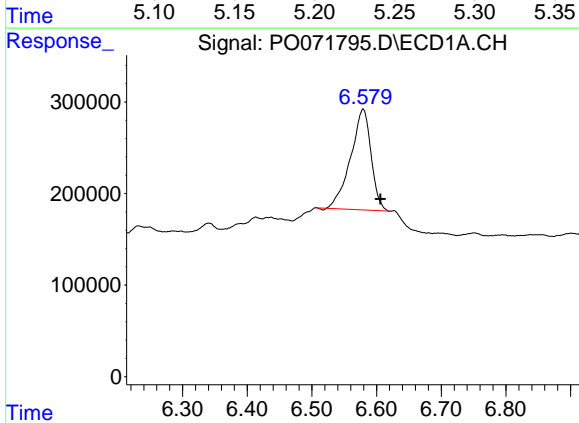
R.T.: 6.579 min  
 Delta R.T.: 0.010 min  
 Response: 2421619  
 Conc: 625.98 ng/ml

Instrument :  
 ECD\_O  
 ClientSampleId :



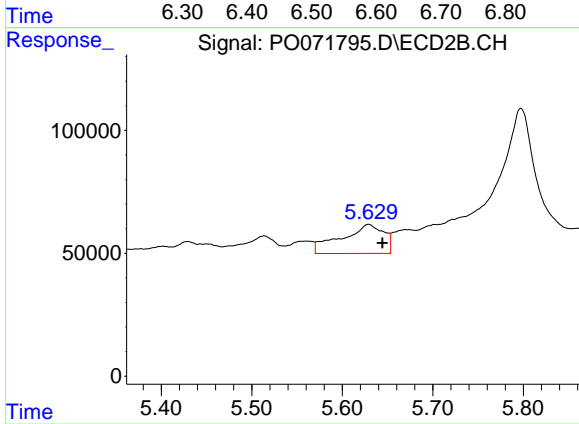
#24 AR-1248-4

R.T.: 5.217 min  
 Delta R.T.: -0.012 min  
 Response: 44965  
 Conc: 29.64 ng/ml



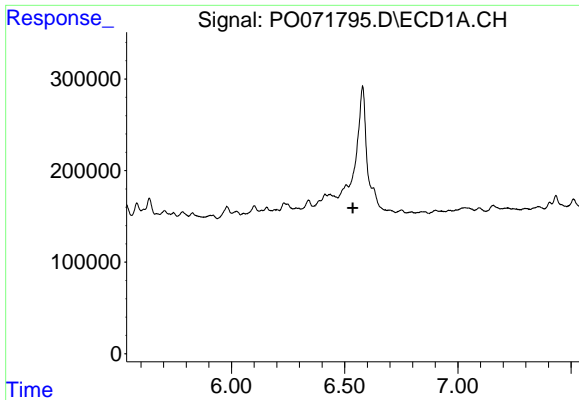
#25 AR-1248-5

R.T.: 6.579 min  
 Delta R.T.: -0.027 min  
 Response: 2421619  
 Conc: 671.81 ng/ml



#25 AR-1248-5

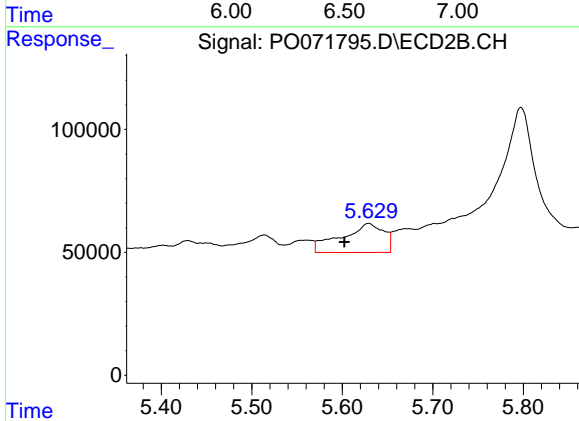
R.T.: 5.629 min  
 Delta R.T.: -0.015 min  
 Response: 385405  
 Conc: 236.48 ng/ml



#26 AR-1254-1

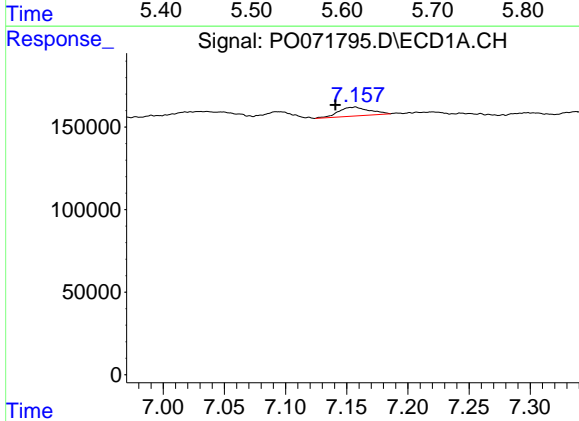
R.T.: 0.000 min  
 Exp R.T.: 6.536 min  
 Response: 0  
 Conc: N.D.

Instrument :  
 ECD\_O  
 ClientSampled :



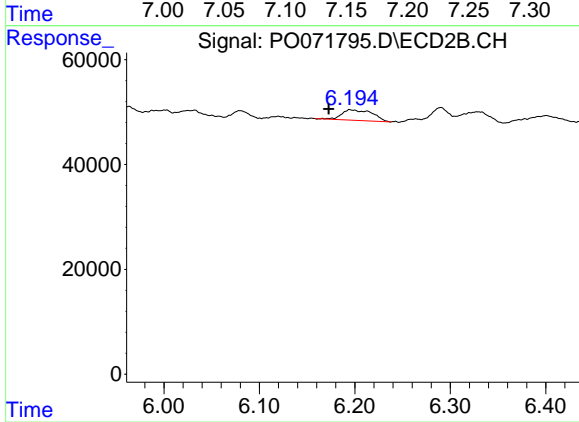
#26 AR-1254-1

R.T.: 5.629 min  
 Delta R.T.: 0.027 min  
 Response: 385405  
 Conc: 162.74 ng/ml



#28 AR-1254-3

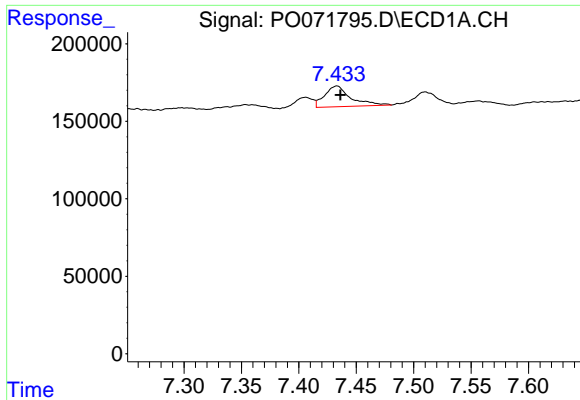
R.T.: 7.157 min  
 Delta R.T.: 0.016 min  
 Response: 94363  
 Conc: 14.90 ng/ml



#28 AR-1254-3

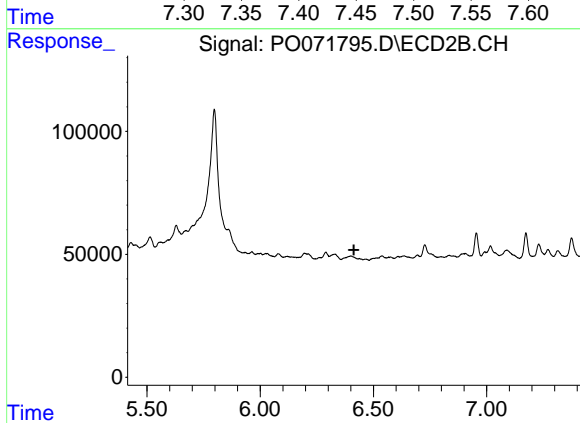
R.T.: 6.195 min  
 Delta R.T.: 0.022 min  
 Response: 45200  
 Conc: 13.36 ng/ml



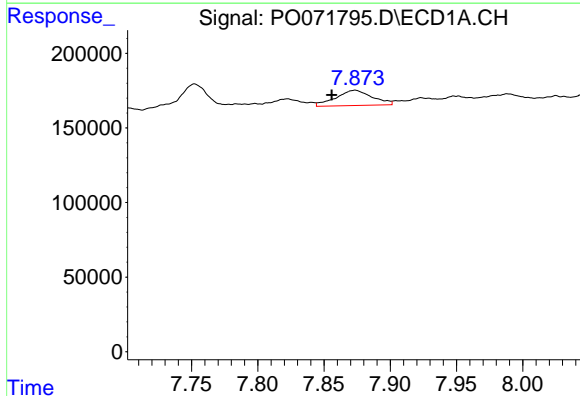


#29 AR-1254-4  
 R.T.: 7.433 min  
 Delta R.T.: -0.003 min  
 Response: 212476  
 Conc: 34.49 ng/ml

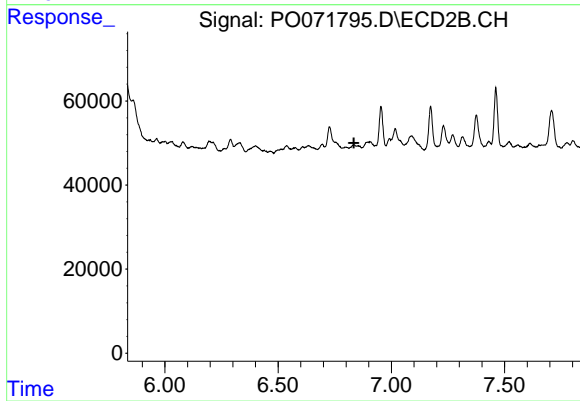
Instrument :  
 ECD\_O  
 ClientSampled :



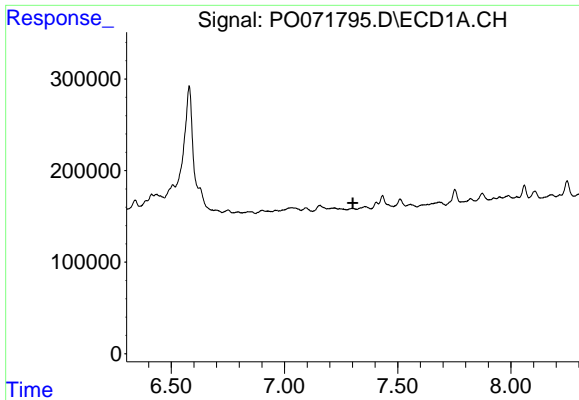
#29 AR-1254-4  
 R.T.: 0.000 min  
 Exp R.T. : 6.414 min  
 Response: 0  
 Conc: N.D.



#30 AR-1254-5  
 R.T.: 7.873 min  
 Delta R.T.: 0.018 min  
 Response: 195847  
 Conc: 32.95 ng/ml



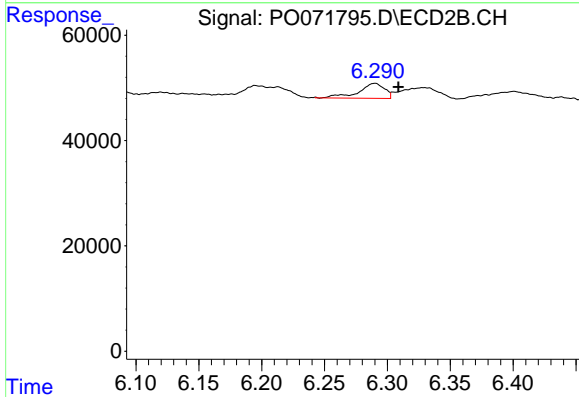
#30 AR-1254-5  
 R.T.: 0.000 min  
 Exp R.T. : 6.835 min  
 Response: 0  
 Conc: N.D.



#31 AR-1260-1

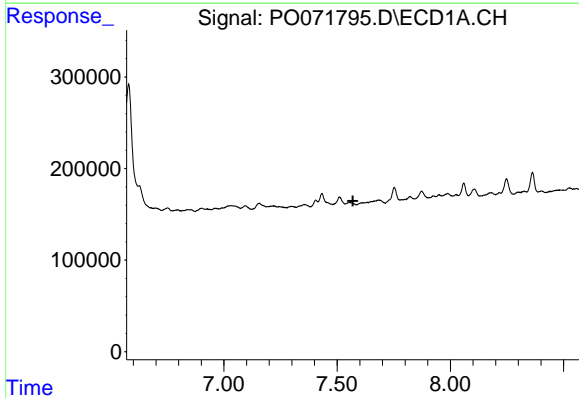
R.T.: 0.000 min  
 Exp R.T. : 7.302 min  
 Response: 0  
 Conc: N.D.

Instrument :  
 ECD\_O  
 ClientSampled :



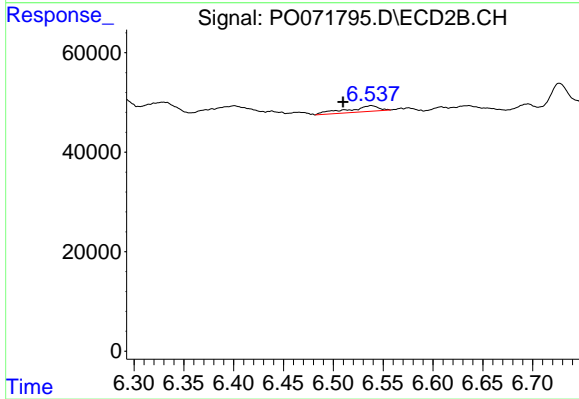
#31 AR-1260-1

R.T.: 6.290 min  
 Delta R.T.: -0.019 min  
 Response: 40492  
 Conc: 14.63 ng/ml



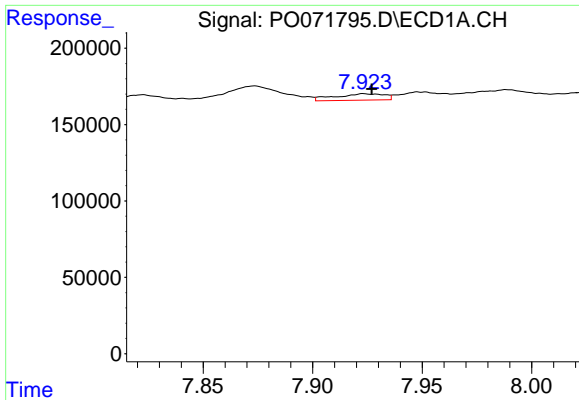
#32 AR-1260-2

R.T.: 0.000 min  
 Exp R.T. : 7.569 min  
 Response: 0  
 Conc: N.D.



#32 AR-1260-2

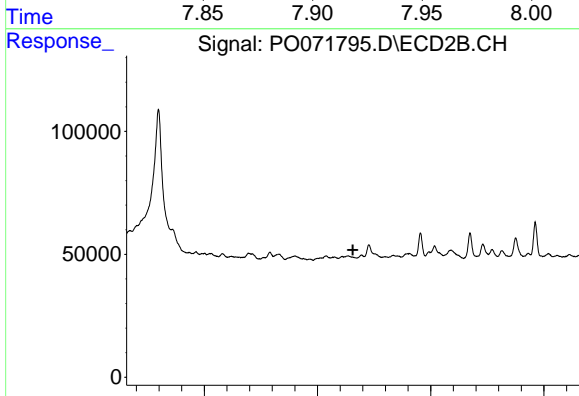
R.T.: 6.538 min  
 Delta R.T.: 0.028 min  
 Response: 25358  
 Conc: 7.17 ng/ml



#33 AR-1260-3

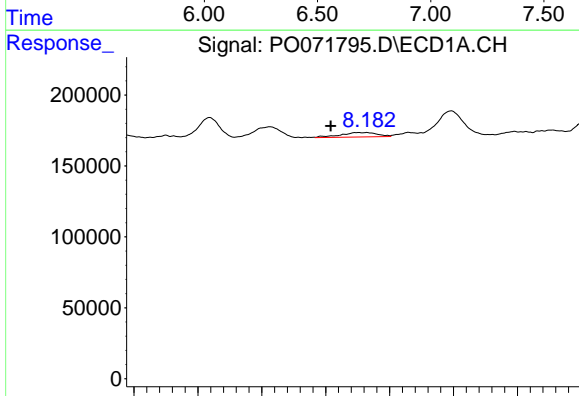
R.T.: 7.923 min  
 Delta R.T.: -0.004 min  
 Response: 65461  
 Conc: 9.09 ng/ml

Instrument :  
 ECD\_O  
 ClientSampleId :



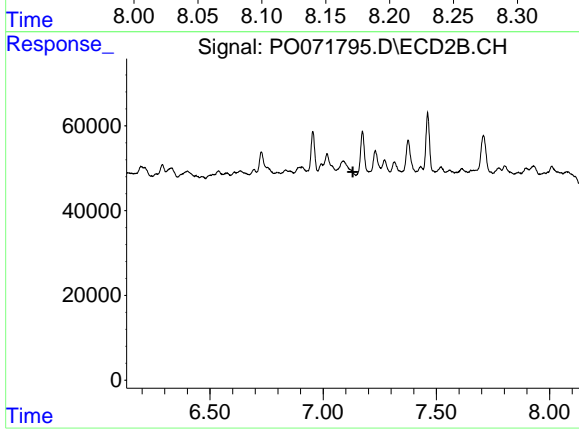
#33 AR-1260-3

R.T.: 0.000 min  
 Exp R.T. : 6.656 min  
 Response: 0  
 Conc: N.D.



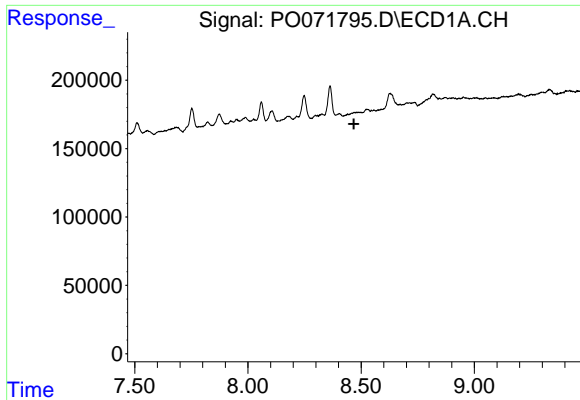
#34 AR-1260-4

R.T.: 8.182 min  
 Delta R.T.: 0.028 min  
 Response: 62196  
 Conc: 9.39 ng/ml



#34 AR-1260-4

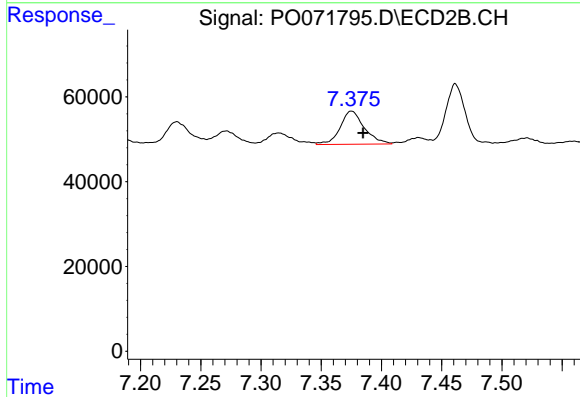
R.T.: 0.000 min  
 Exp R.T. : 7.132 min  
 Response: 0  
 Conc: N.D.



#35 AR-1260-5

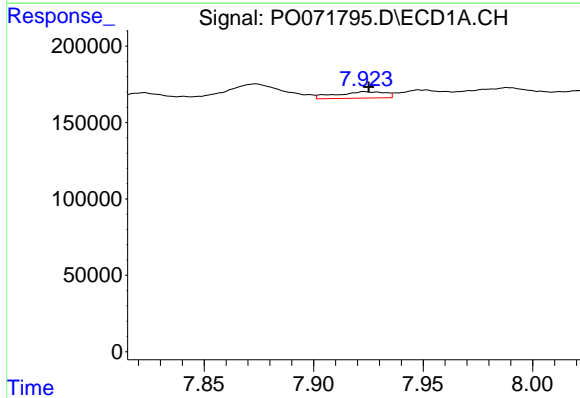
R.T.: 0.000 min  
 Exp R.T.: 8.468 min  
 Response: 0  
 Conc: N.D.

Instrument :  
 ECD\_O  
 ClientSampleId :



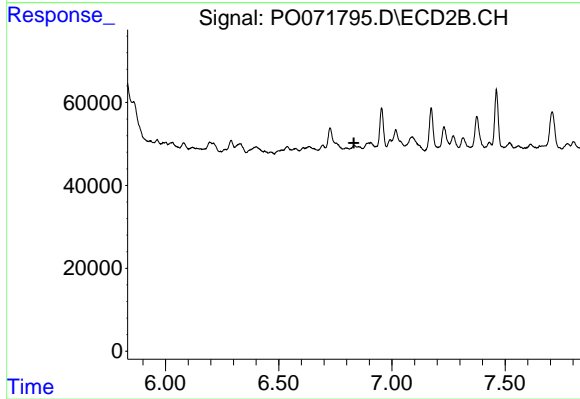
#35 AR-1260-5

R.T.: 7.375 min  
 Delta R.T.: -0.009 min  
 Response: 109968  
 Conc: 14.87 ng/ml



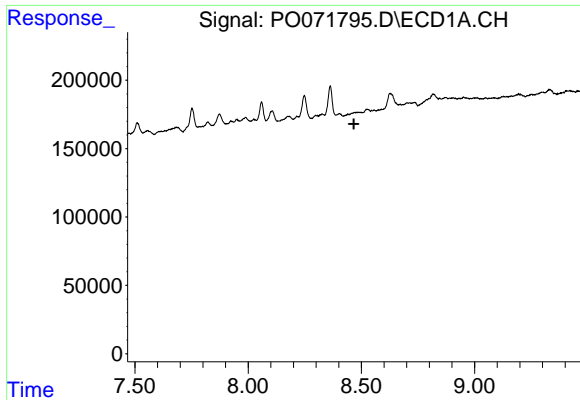
#36 AR-1262-1

R.T.: 7.923 min  
 Delta R.T.: -0.002 min  
 Response: 65461  
 Conc: 6.93 ng/ml



#36 AR-1262-1

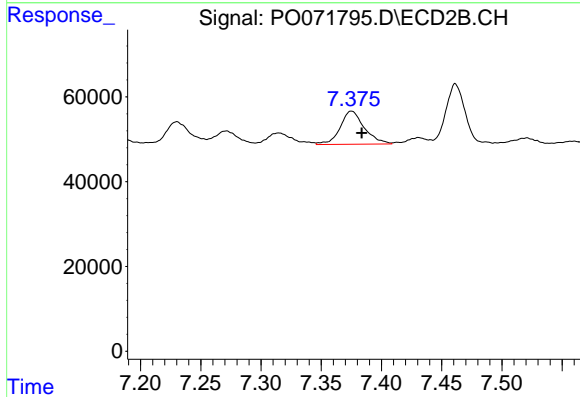
R.T.: 0.000 min  
 Exp R.T.: 6.832 min  
 Response: 0  
 Conc: N.D.



#37 AR-1262-2

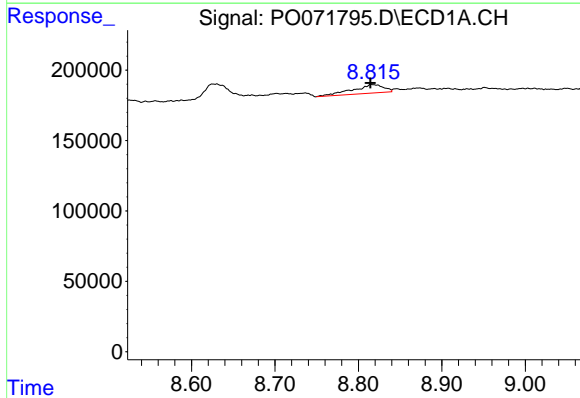
R.T.: 0.000 min  
 Exp R.T.: 8.467 min  
 Response: 0  
 Conc: N.D.

Instrument :  
 ECD\_O  
 ClientSampleId :



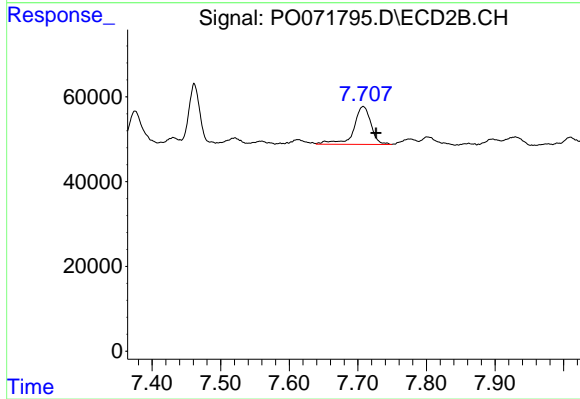
#37 AR-1262-2

R.T.: 7.375 min  
 Delta R.T.: -0.008 min  
 Response: 109968  
 Conc: 15.92 ng/ml



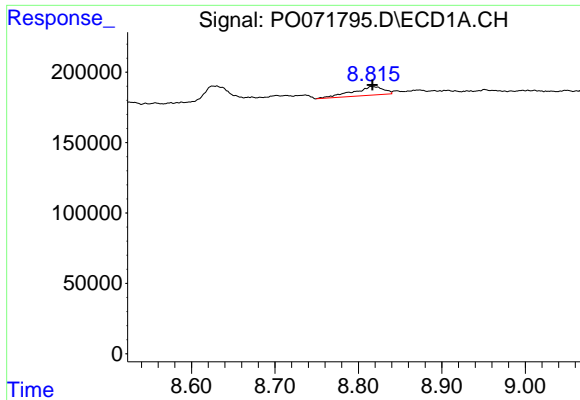
#39 AR-1262-4

R.T.: 8.816 min  
 Delta R.T.: 0.002 min  
 Response: 157890  
 Conc: 41.59 ng/ml



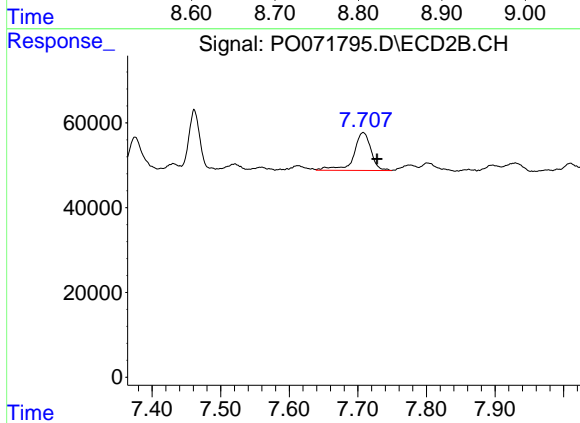
#39 AR-1262-4

R.T.: 7.708 min  
 Delta R.T.: -0.019 min  
 Response: 156032  
 Conc: 29.47 ng/ml

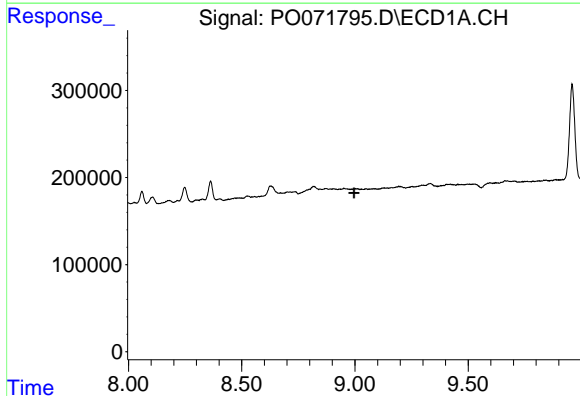


#42 AR-1268-2  
 R.T.: 8.816 min  
 Delta R.T.: 0.000 min  
 Response: 157890  
 Conc: 10.30 ng/ml

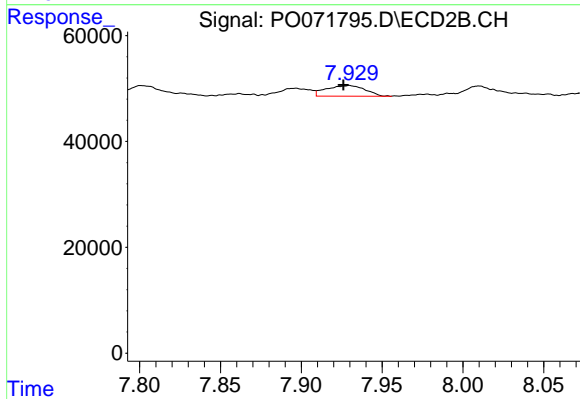
Instrument :  
 ECD\_O  
 ClientSampled :



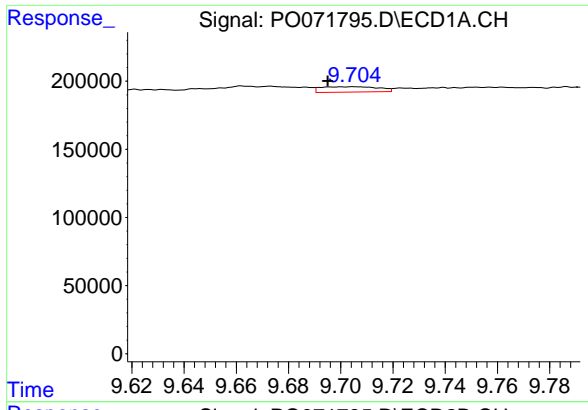
#42 AR-1268-2  
 R.T.: 7.708 min  
 Delta R.T.: -0.020 min  
 Response: 156032  
 Conc: 20.56 ng/ml



#43 AR-1268-3  
 R.T.: 0.000 min  
 Exp R.T. : 8.996 min  
 Response: 0  
 Conc: N.D.



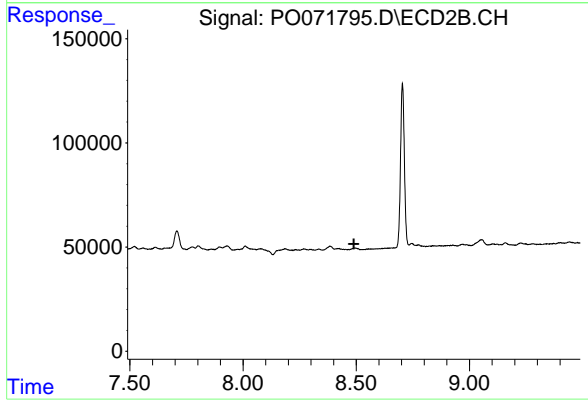
#43 AR-1268-3  
 R.T.: 7.930 min  
 Delta R.T.: 0.004 min  
 Response: 33621  
 Conc: 5.18 ng/ml



#45 AR-1268-5

R.T.: 9.705 min  
 Delta R.T.: 0.010 min  
 Response: 60226  
 Conc: 1.55 ng/ml

Instrument :  
 ECD\_O  
 ClientSampleId :



#45 AR-1268-5

R.T.: 0.000 min  
 Exp R.T. : 8.489 min  
 Response: 0  
 Conc: N.D.