

Data Path : Z:\pestpcbsrv\HPCHEM1\ECD_0\Data\PO100218\
 Data File : PO049558.D
 Signal(s) : Signal #1: ECD1A.CH Signal #2: ECD2B.CH
 Acq On : 02 Oct 2018 15:39
 Operator : SM/SJ
 Sample : J5153-02
 Misc :
 ALS Vial : 14 Sample Multiplier: 1

Instrument :
 ECD_0
ClientSampleId :
 2-SW-SIDE-UNIT

Manual Integrations
APPROVED
 Sohil
 10/3/2018 10:28:07 AM

Integration File signal 1: autoint1.e
 Integration File signal 2: autoint2.e
 Quant Time: Oct 02 16:08:36 2018
 Quant Method : Z:\pestpcbsrv\HPCHEM1\ECD_0\methods\PO100118.M
 Quant Title : GC EXTRACTABLES
 QLast Update : Tue Oct 02 05:32:25 2018
 Response via : Initial Calibration
 Integrator: ChemStation 6890 Scale Mode: Small noise peaks clipped

Volume Inj. : 2 µl
 Signal #1 Phase : ZB-MR1 Signal #2 Phase: ZB-MR2
 Signal #1 Info : 30Mx0.32mmx 0.50µ Signal #2 Info : 30M x 0.32mm x 0.25µm

Compound	RT#1	RT#2	Resp#1	Resp#2	ng/ml	ng/ml

System Monitoring Compounds						
1) SA Tetrachlo...	4.390	3.525	3554656	2835740	10.066	8.337
2) SA Decachlor...	10.096	8.445	3842289	2197122	8.109	7.191
Target Compounds						
31) L7 AR-1260-1	7.166	6.056	3143099	2643685	148.603m	128.785m
32) L7 AR-1260-2	7.422	6.240	3485669	2332641	129.548m	87.619m#
33) L7 AR-1260-3	7.779	6.391	3286673	2952871	166.355	124.586m#
34) L7 AR-1260-4	8.001	6.857	4489984	1593415	228.281	88.330 #
35) L7 AR-1260-5	8.321	7.097	5872950	3875547	130.831	82.944 #

(f)=RT Delta > 1/2 Window (#)=Amounts differ by > 25% (m)=manual int.

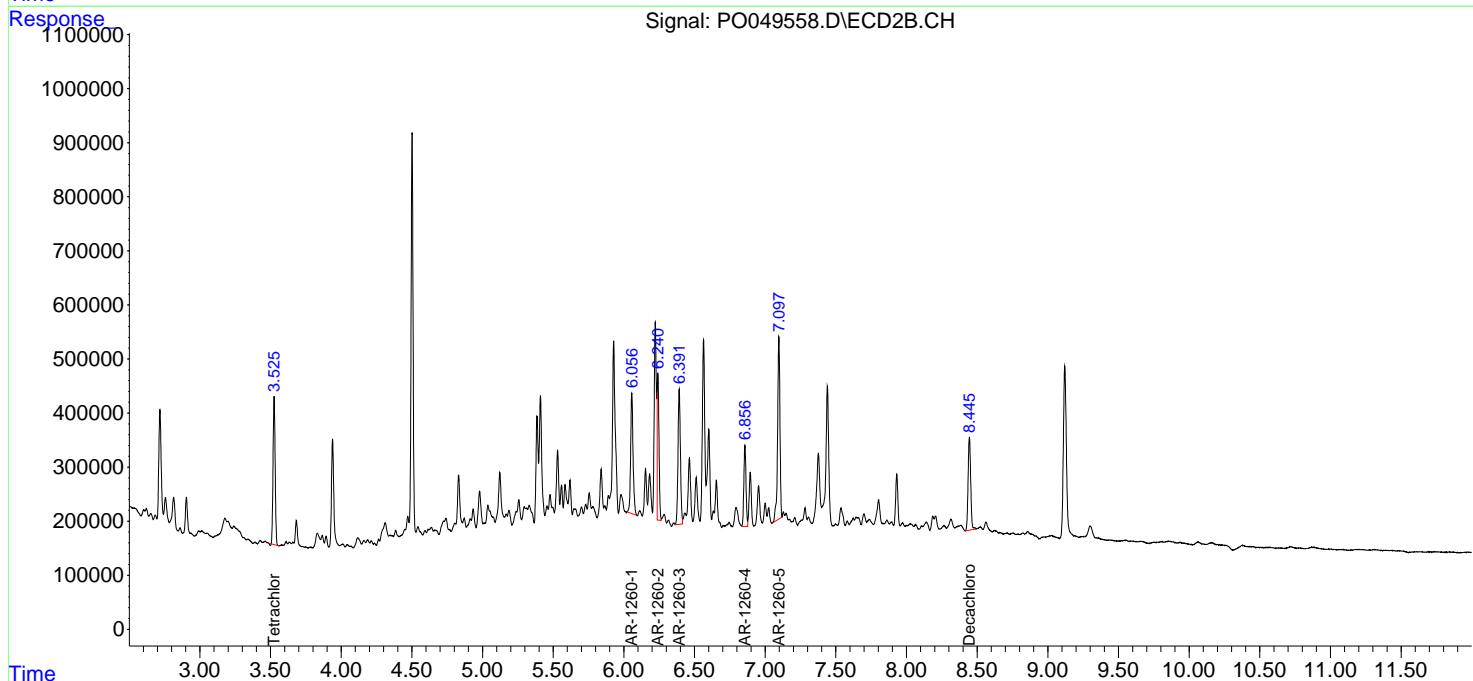
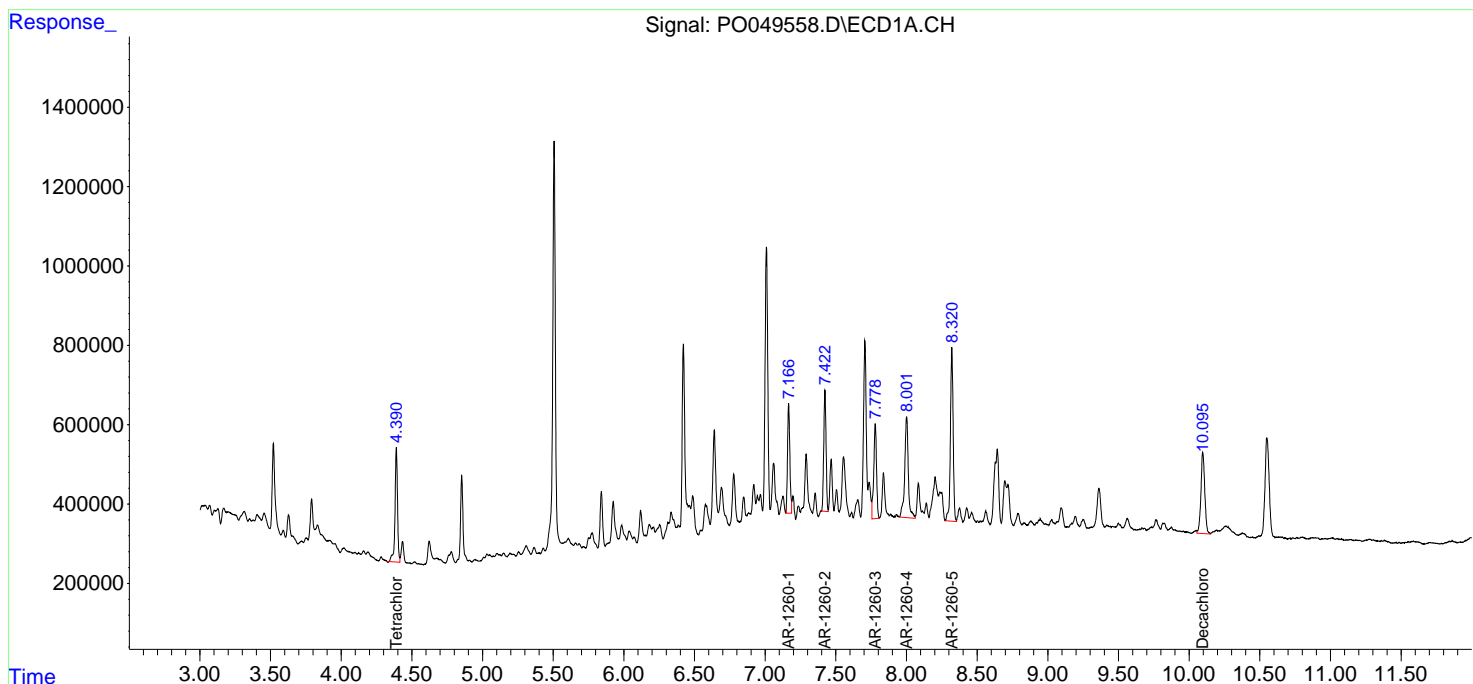
Data Path : Z:\pestpcbsrv\HPCHEM1\ECD_O\Data\PO100218\
 Data File : PO049558.D
 Signal(s) : Signal #1: ECD1A.CH Signal #2: ECD2B.CH
 Acq On : 02 Oct 2018 15:39
 Operator : SM/SJ
 Sample : J5153-02
 Misc :
 ALS Vial : 14 Sample Multiplier: 1

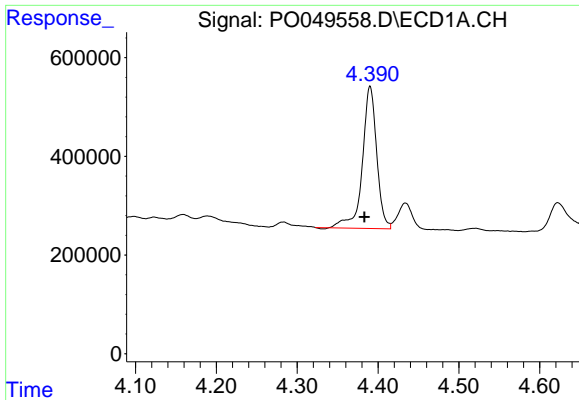
Instrument :
 ECD_O
Client Sampled :
 2-SW-SIDE-UNIT

Manual Integrations
APPROVED
 Sohil
 10/3/2018 10:28:07 AM

Integration File signal 1: autoint1.e
 Integration File signal 2: autoint2.e
 Quant Time: Oct 02 16:08:36 2018
 Quant Method : Z:\pestpcbsrv\HPCHEM1\ECD_O\methods\PO100118.M
 Quant Title : GC EXTRACTABLES
 QLast Update : Tue Oct 02 05:32:25 2018
 Response via : Initial Calibration
 Integrator: ChemStation 6890 Scale Mode: Small noise peaks clipped

Volume Inj. : 2 µl
 Signal #1 Phase : ZB-MR1 Signal #2 Phase: ZB-MR2
 Signal #1 Info : 30Mx0.32mmx 0.50µ Signal #2 Info : 30M x 0.32mm x 0.25µm

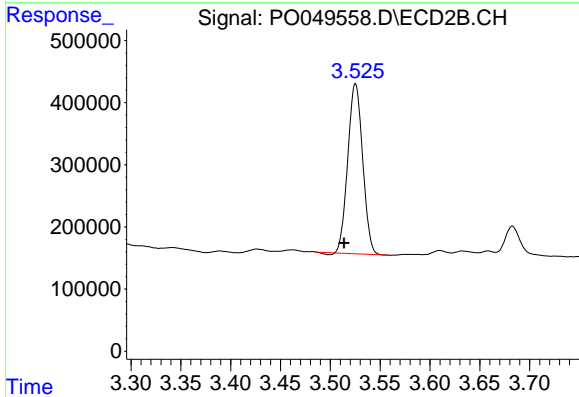




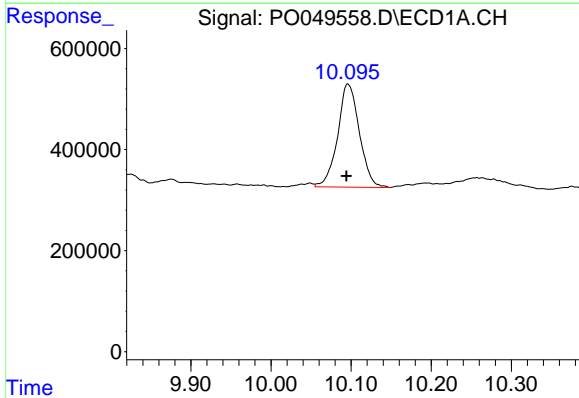
#1 Tetrachloro-m-xylene
 R.T.: 4.390 min
 Delta R.T.: 0.007 min
 Response: 3554656
 Conc: 10.07 ng/ml

Instrument :
 ECD_O
ClientSampled :
 2-SW-SIDE-UNIT

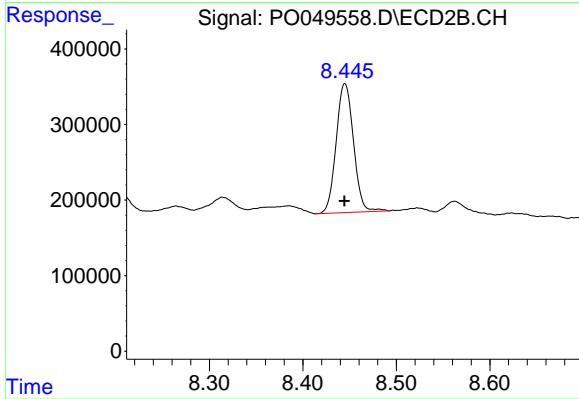
Manual Integrations
APPROVED
 Sohil
 10/3/2018 10:28:07 AM



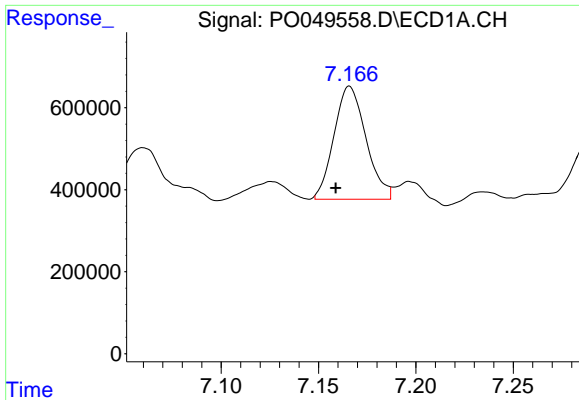
#1 Tetrachloro-m-xylene
 R.T.: 3.525 min
 Delta R.T.: 0.011 min
 Response: 2835740
 Conc: 8.34 ng/ml



#2 Decachlorobiphenyl
 R.T.: 10.096 min
 Delta R.T.: 0.002 min
 Response: 3842289
 Conc: 8.11 ng/ml



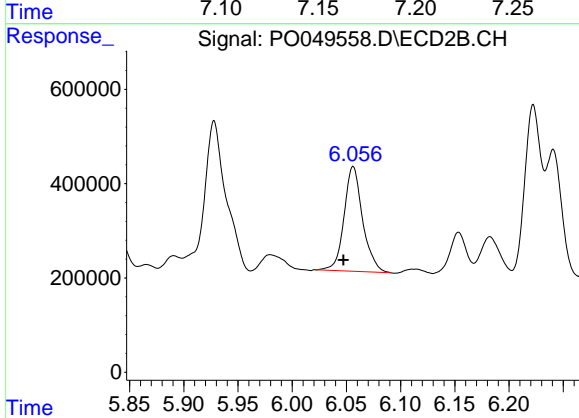
#2 Decachlorobiphenyl
 R.T.: 8.445 min
 Delta R.T.: 0.000 min
 Response: 2197122
 Conc: 7.19 ng/ml



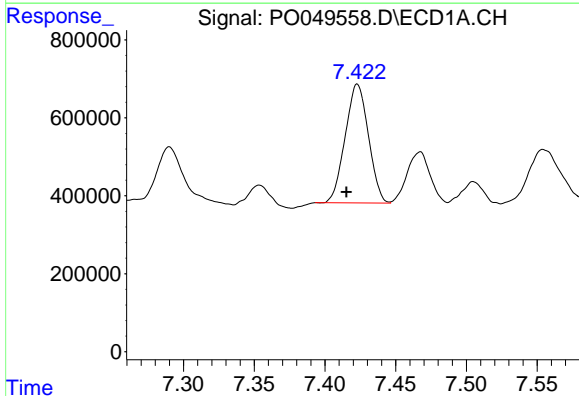
#31 AR-1260-1
 R.T.: 7.166 min
 Delta R.T.: 0.007 min
 Response: 3143099
 Conc: 148.60 ng/ml m

Instrument :
 ECD_O
ClientSampled :
 2-SW-SIDE-UNIT

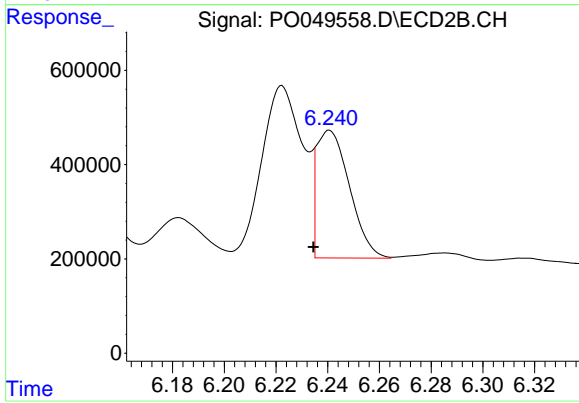
Manual Integrations
APPROVED
 Sohil
 10/3/2018 10:28:07 AM



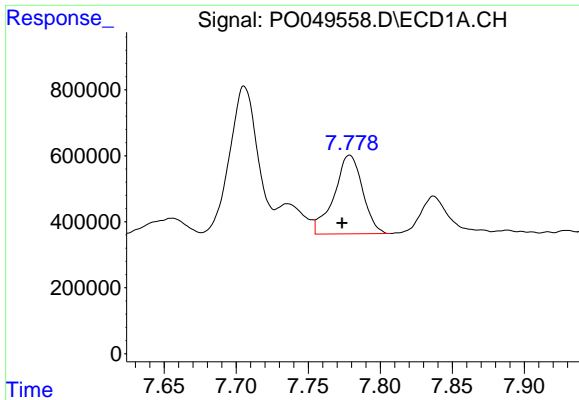
#31 AR-1260-1
 R.T.: 6.056 min
 Delta R.T.: 0.009 min
 Response: 2643685
 Conc: 128.78 ng/ml m



#32 AR-1260-2
 R.T.: 7.422 min
 Delta R.T.: 0.007 min
 Response: 3485669
 Conc: 129.55 ng/ml m



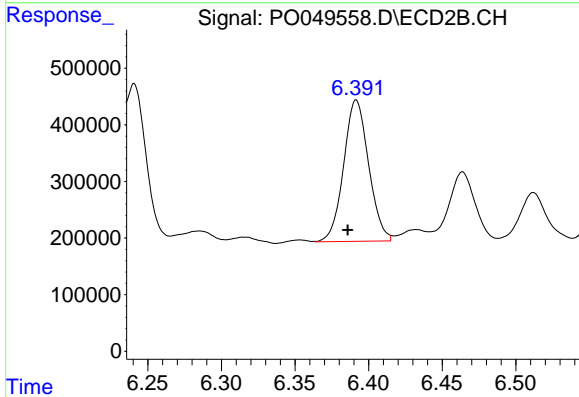
#32 AR-1260-2
 R.T.: 6.240 min
 Delta R.T.: 0.006 min
 Response: 2332641
 Conc: 87.62 ng/ml m



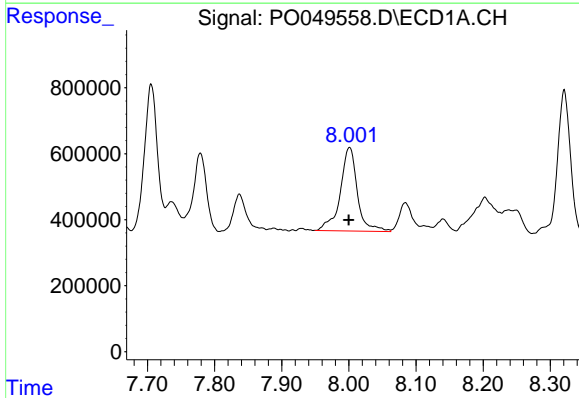
#33 AR-1260-3
 R.T.: 7.779 min
 Delta R.T.: 0.005 min
 Response: 3286673
 Conc: 166.35 ng/ml

Instrument :
 ECD_O
ClientSampled :
 2-SW-SIDE-UNIT

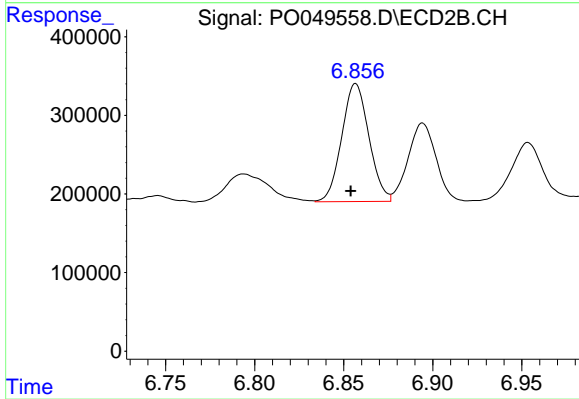
Manual Integrations
APPROVED
 Sohil
 10/3/2018 10:28:07 AM



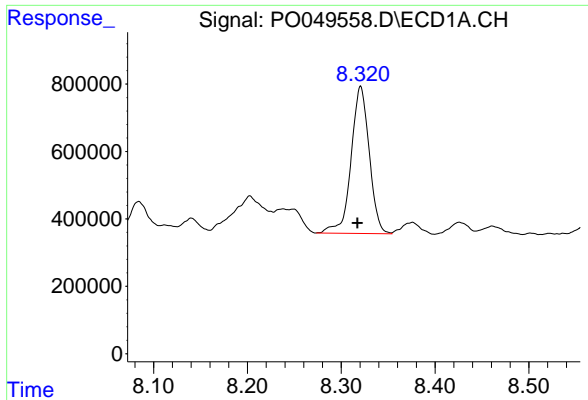
#33 AR-1260-3
 R.T.: 6.391 min
 Delta R.T.: 0.005 min
 Response: 2952871
 Conc: 124.59 ng/ml m



#34 AR-1260-4
 R.T.: 8.001 min
 Delta R.T.: 0.001 min
 Response: 4489984
 Conc: 228.28 ng/ml



#34 AR-1260-4
 R.T.: 6.857 min
 Delta R.T.: 0.003 min
 Response: 1593415
 Conc: 88.33 ng/ml



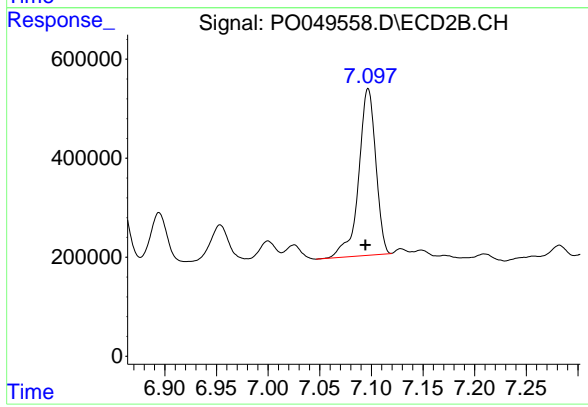
#35 AR-1260-5

R.T.: 8.321 min
 Delta R.T.: 0.003 min
 Response: 5872950
 Conc: 130.83 ng/ml

Instrument :
 ECD_O
ClientSampled :
 2-SW-SIDE-UNIT

Manual Integrations
APPROVED

Sohil
 10/3/2018 10:28:07 AM



#35 AR-1260-5

R.T.: 7.097 min
 Delta R.T.: 0.003 min
 Response: 3875547
 Conc: 82.94 ng/ml