

Data Path : Z:\pestpcbsrv\HPCHEM1\ECD_0\Data\PO100218\
 Data File : PO049561.D
 Signal(s) : Signal #1: ECD1A.CH Signal #2: ECD2B.CH
 Acq On : 02 Oct 2018 16:26
 Operator : SM/SJ
 Sample : J5153-01RE
 Misc :
 ALS Vial : 13 Sample Multiplier: 1

Instrument :
 ECD_0
 ClientSampleId :
 1-SE-SIDE-UNITRE

Integration File signal 1: autoint1.e
 Integration File signal 2: autoint2.e
 Quant Time: Oct 02 16:47:27 2018
 Quant Method : Z:\pestpcbsrv\HPCHEM1\ECD_0\methods\PO100118.M
 Quant Title : GC EXTRACTABLES
 QLast Update : Tue Oct 02 05:32:25 2018
 Response via : Initial Calibration
 Integrator: ChemStation 6890 Scale Mode: Small noise peaks clipped

Volume Inj. : 2 µl
 Signal #1 Phase : ZB-MR1 Signal #2 Phase: ZB-MR2
 Signal #1 Info : 30Mx0.32mmx 0.50µ Signal #2 Info : 30M x 0.32mm x 0.25µm

Compound	RT#1	RT#2	Resp#1	Resp#2	ng/ml	ng/ml

System Monitoring Compounds						
1) SA Tetrachlo...	4.388	3.521	4107762	3628164	11.633	10.667
2) SA Decachlor...	10.096	8.446	4499853	2615724	9.496	8.561m

Target Compounds

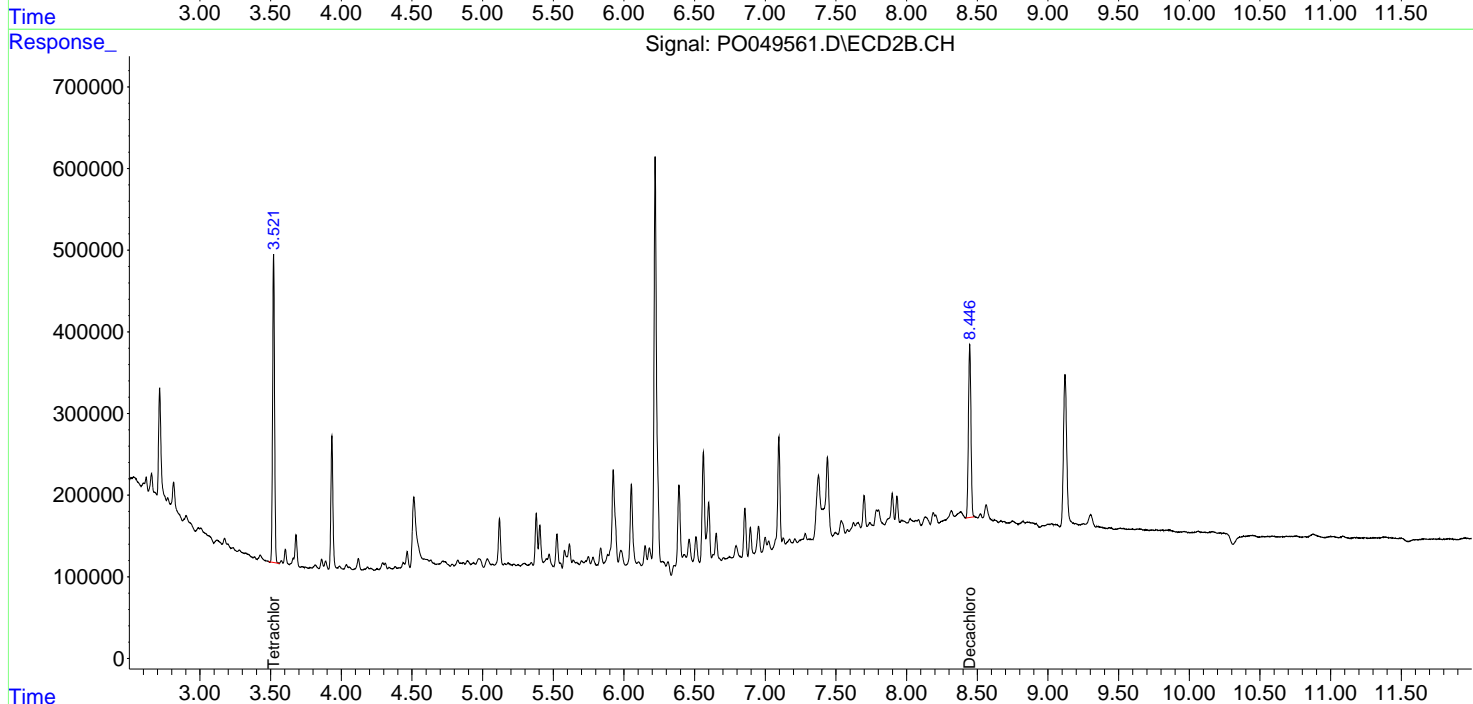
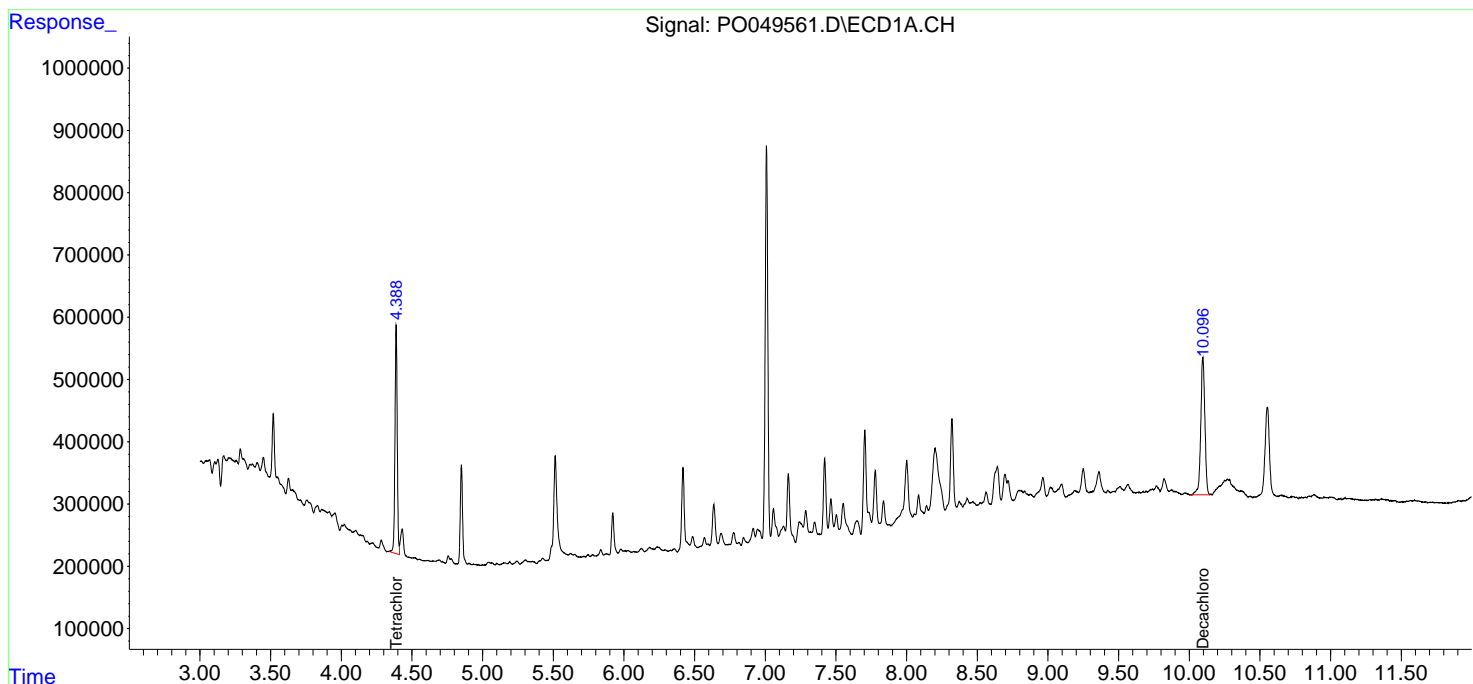
(f)=RT Delta > 1/2 Window (#)=Amounts differ by > 25% (m)=manual int.

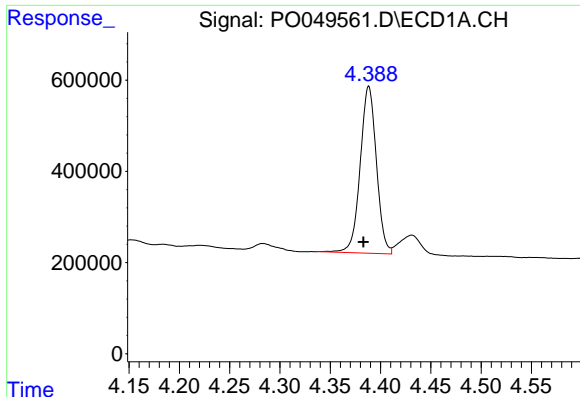
Data Path : Z:\pestpcbsrv\HPCHEM1\ECD_O\Data\PO100218\
 Data File : PO049561.D
 Signal(s) : Signal #1: ECD1A.CH Signal #2: ECD2B.CH
 Acq On : 02 Oct 2018 16:26
 Operator : SM/SJ
 Sample : J5153-01RE
 Misc :
 ALS Vial : 13 Sample Multiplier: 1

Instrument :
 ECD_O
 ClientSampleId :
 1-SE-SIDE-UNITRE

Integration File signal 1: autoint1.e
 Integration File signal 2: autoint2.e
 Quant Time: Oct 02 16:47:27 2018
 Quant Method : Z:\pestpcbsrv\HPCHEM1\ECD_O\methods\PO100118.M
 Quant Title : GC EXTRACTABLES
 QLast Update : Tue Oct 02 05:32:25 2018
 Response via : Initial Calibration
 Integrator: ChemStation 6890 Scale Mode: Small noise peaks clipped

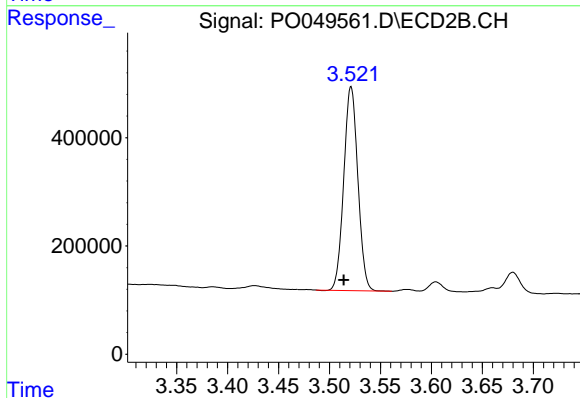
Volume Inj. : 2 µl
 Signal #1 Phase : ZB-MR1 Signal #2 Phase: ZB-MR2
 Signal #1 Info : 30Mx0.32mmx 0.50µ Signal #2 Info : 30M x 0.32mm x 0.25µm



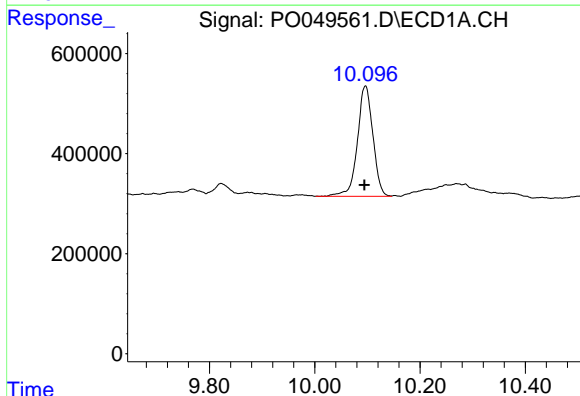


#1 Tetrachloro-m-xylene
 R.T.: 4.388 min
 Delta R.T.: 0.005 min
 Response: 4107762
 Conc: 11.63 ng/ml

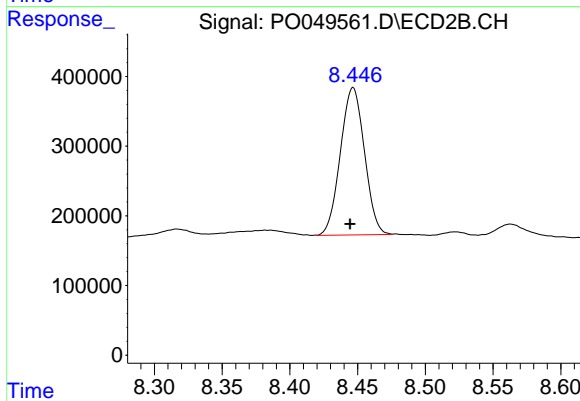
Instrument :
 ECD_O
 ClientSampleId :
 1-SE-SIDE-UNITRE



#1 Tetrachloro-m-xylene
 R.T.: 3.521 min
 Delta R.T.: 0.007 min
 Response: 3628164
 Conc: 10.67 ng/ml



#2 Decachlorobiphenyl
 R.T.: 10.096 min
 Delta R.T.: 0.002 min
 Response: 4499853
 Conc: 9.50 ng/ml



#2 Decachlorobiphenyl
 R.T.: 8.446 min
 Delta R.T.: 0.002 min
 Response: 2615724
 Conc: 8.56 ng/ml m