

Data Path : Z:\pestpcbsrv\HPCHEM1\ECD_0\Data\PO100320\
 Data File : PO071949.D
 Signal(s) : Signal #1: ECD1A.CH Signal #2: ECD2B.CH
 Acq On : 03 Oct 2020 2:32
 Operator : DD\AJ
 Sample : L4230-08
 Misc :
 ALS Vial : 32 Sample Multiplier: 1

Instrument :
 ECD_0
 ClientSampled :
 24702

Manual Integrations
 APPROVED

Ankita
 10/5/2020 3:35:35 PM

Integration File signal 1: autoint1.e
 Integration File signal 2: autoint2.e
 Quant Time: Oct 03 04:28:17 2020
 Quant Method : Z:\pestpcbsrv\HPCHEM1\ECD_0\methods\PO100320.M
 Quant Title : GC EXTRACTABLES
 QLast Update : Sat Oct 03 04:09:16 2020
 Response via : Initial Calibration
 Integrator: ChemStation 6890 Scale Mode: Small noise peaks clipped

Volume Inj. : 2 µl
 Signal #1 Phase : ZB-MR1 Signal #2 Phase: ZB-MR2
 Signal #1 Info : 30Mx0.32mmx 0.50µ Signal #2 Info : 30M x 0.32mm x 0.25µm

Compound	RT#1	RT#2	Resp#1	Resp#2	ng/ml	ng/ml

System Monitoring Compounds						
1) SA Tetrachlo...	4.328	3.512	1051396	582197	14.638	15.543
2) SA Decachlor...	9.935	8.684	1309741	690486	11.895	12.139m

Target Compounds

(f)=RT Delta > 1/2 Window (#)=Amounts differ by > 25% (m)=manual int.

Data Path : Z:\pestpcbsrv\HPCHEM1\ECD_O\Data\PO100320\
 Data File : PO071949.D
 Signal(s) : Signal #1: ECD1A.CH Signal #2: ECD2B.CH
 Acq On : 03 Oct 2020 2:32
 Operator : DD\AJ
 Sample : L4230-08
 Misc :
 ALS Vial : 32 Sample Multiplier: 1

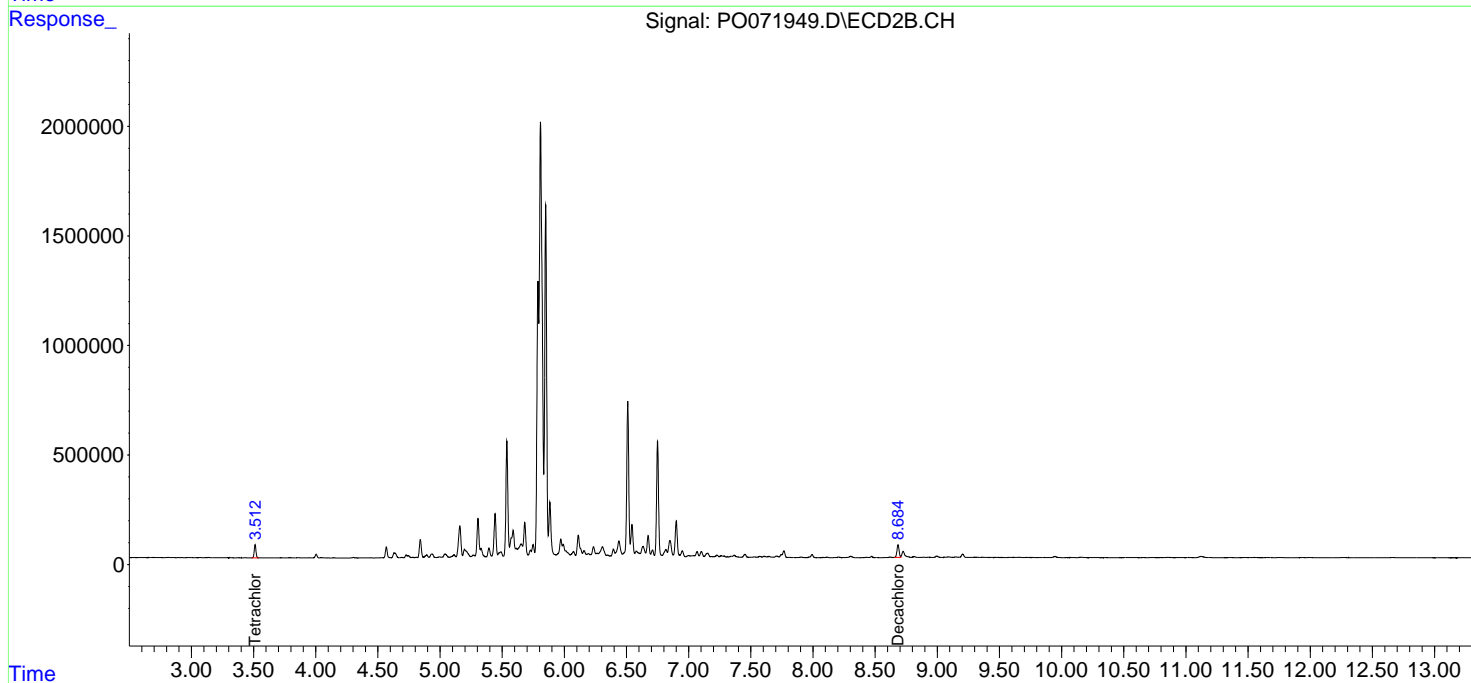
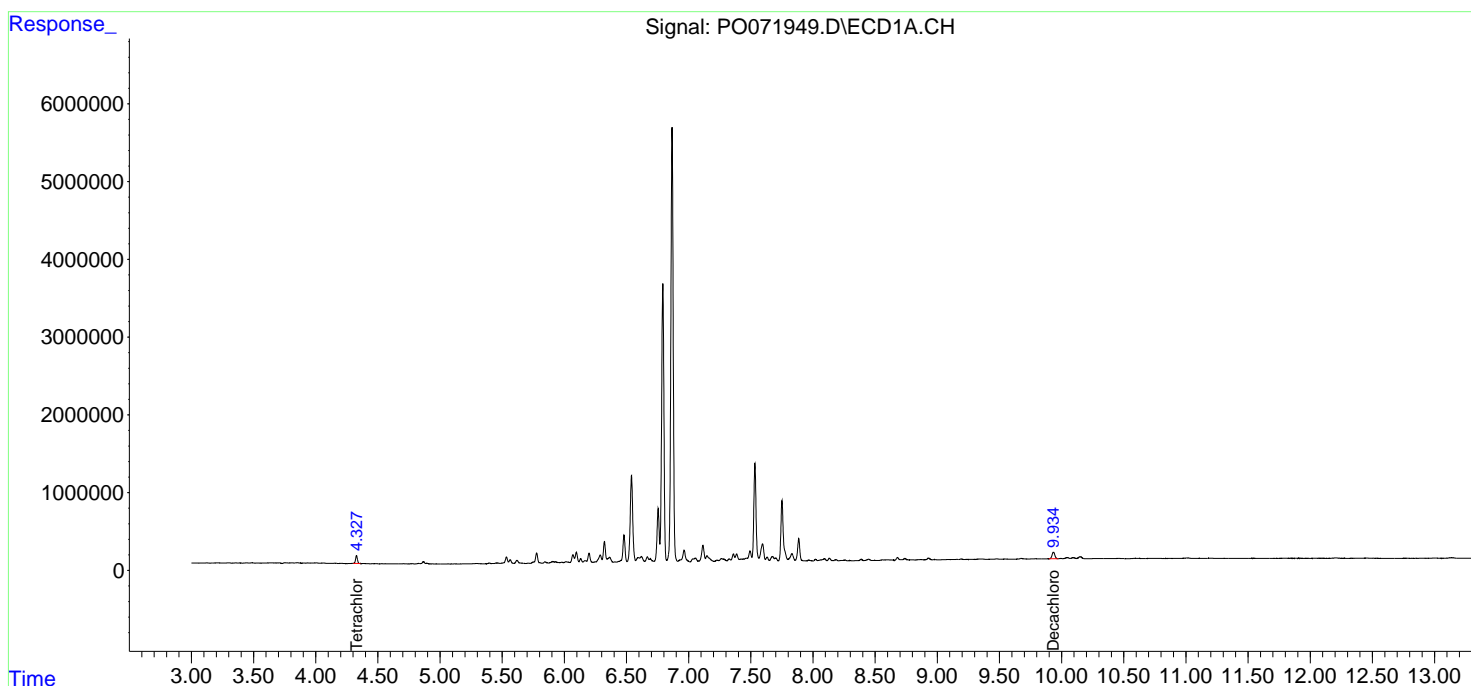
Instrument :
 ECD_O
 ClientSampleId :
 24702

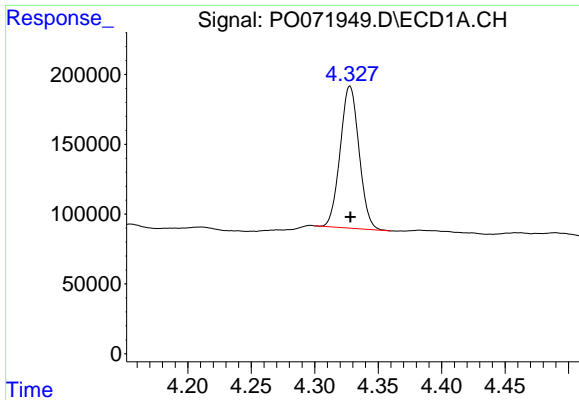
Manual Integrations
 APPROVED

Ankita
 10/5/2020 3:35:35 PM

Integration File signal 1: autoint1.e
 Integration File signal 2: autoint2.e
 Quant Time: Oct 03 04:28:17 2020
 Quant Method : Z:\pestpcbsrv\HPCHEM1\ECD_O\methods\PO100320.M
 Quant Title : GC EXTRACTABLES
 QLast Update : Sat Oct 03 04:09:16 2020
 Response via : Initial Calibration
 Integrator: ChemStation 6890 Scale Mode: Small noise peaks clipped

Volume Inj. : 2 µl
 Signal #1 Phase : ZB-MR1 Signal #2 Phase: ZB-MR2
 Signal #1 Info : 30Mx0.32mmx 0.50µ Signal #2 Info : 30M x 0.32mm x 0.25µm

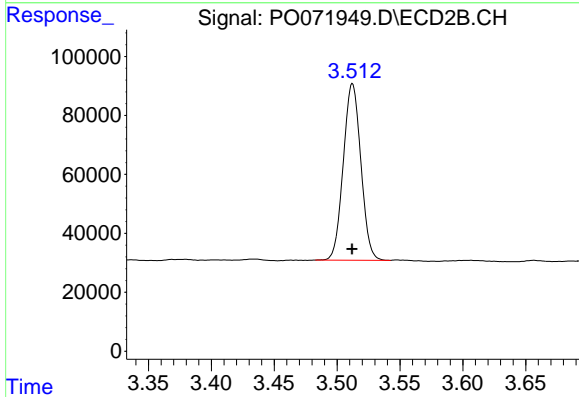




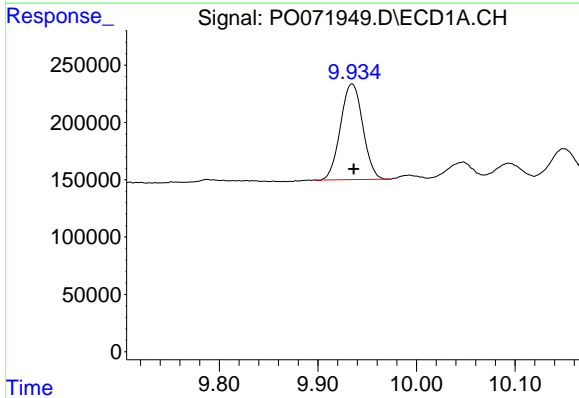
#1 Tetrachloro-m-xylene
 R.T.: 4.328 min
 Delta R.T.: 0.000 min
 Response: 1051396
 Conc: 14.64 ng/ml

Instrument :
 ECD_O
 ClientSampled :
 24702

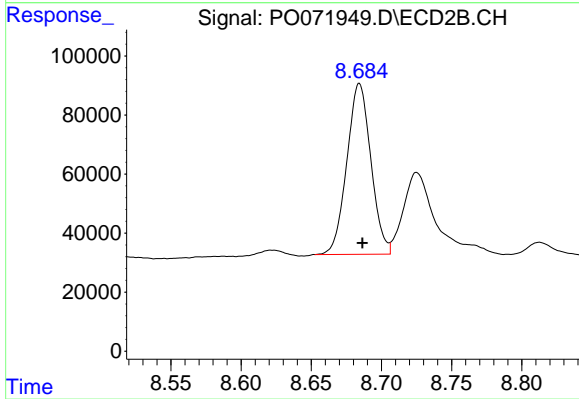
Manual Integrations
 APPROVED
 Ankita
 10/5/2020 3:35:35 PM



#1 Tetrachloro-m-xylene
 R.T.: 3.512 min
 Delta R.T.: 0.000 min
 Response: 582197
 Conc: 15.54 ng/ml



#2 Decachlorobiphenyl
 R.T.: 9.935 min
 Delta R.T.: -0.002 min
 Response: 1309741
 Conc: 11.90 ng/ml



#2 Decachlorobiphenyl
 R.T.: 8.684 min
 Delta R.T.: -0.003 min
 Response: 690486
 Conc: 12.14 ng/ml m