

Data Path : Z:\pestpcbsrv\HPCHEM1\ECD_O\Data\P0100323\
 Data File : P0098489.D
 Signal(s) : Signal #1: ECD1A.ch Signal #2: ECD2B.ch
 Acq On : 03 Oct 2023 20:29
 Operator : YP/AJ
 Sample : I.BLK
 Misc :
 ALS Vial : 2 Sample Multiplier: 1

Instrument :
 ECD_O
 ClientSampleId :
 I.BLK

Integration File signal 1: autoint1.e
 Integration File signal 2: autoint2.e
 Quant Time: Oct 04 01:34:12 2023
 Quant Method : Z:\pestpcbsrv\HPCHEM1\ECD_O\methods\P0092723.M
 Quant Title : GC EXTRACTABLES
 QLast Update : Thu Sep 28 01:18:56 2023
 Response via : Initial Calibration
 Integrator: ChemStation

Volume Inj. : 2 µl
 Signal #1 Phase : ZB-MR2 Signal #2 Phase: ZB-MR2
 Signal #1 Info : 30Mx0.32mmx 0.50µ Signal #2 Info : 30M x 0.32mm x 0.25µm

Compound	RT#1	RT#2	Resp#1	Resp#2	ng/ml	ng/ml

System Monitoring Compounds						
1) SA Tetrachlo...	4.485	3.637	33099228	13744235	17.238	17.647
2) SA Decachlor...	10.297	8.644	22699451	10476555	18.700	19.554
Target Compounds						
3) L1 AR-1016-1	5.656	4.719	38494	84820	0.712	3.554 #
4) L1 AR-1016-2	5.693	4.742	138278	41131	1.703	1.208 #
5) L1 AR-1016-3	5.738	4.917	4145	973187	0.083	54.100 #
6) L1 AR-1016-4	5.840	4.980	20212	1731248	0.517	115.483 #
7) L1 AR-1016-5	6.129	5.174	143337	1746700	3.486	89.941 #
8) L2 AR-1221-1	4.705	3.842	19398	11929	0.862	1.298 #
9) L2 AR-1221-2	4.796	3.938	986137	283652	58.445	42.658 #
10) L2 AR-1221-3	4.856	4.019	73328	56223	1.499	2.787 #
11) L3 AR-1232-1	4.856	4.019	73328	56223	1.795	3.345 #
12) L3 AR-1232-2	5.392	4.742	28705	41131	1.327	2.737 #
13) L3 AR-1232-3	5.693	4.917	138278	973187	3.890	124.343 #
14) L3 AR-1232-4	5.840	5.019	20212	2138879	1.191	284.458 #
15) L3 AR-1232-5	5.939	5.174	67796	1746700	4.762	215.916 #
16) L4 AR-1242-1	5.656	4.719	38494	84820	0.845	4.051 #
17) L4 AR-1242-2	5.693	4.742	138278	41131	2.019	1.415 #
18) L4 AR-1242-3	5.738	4.917	4145	973187	0.098	62.272 #
19) L4 AR-1242-4	5.840	5.019	20212	2138879	0.616	129.141 #
20) L4 AR-1242-5	6.587	5.508	4455090	983766	125.775	53.009 #
21) L5 AR-1248-1	5.656	4.719	38494	84820	1.137	5.412 #
22) L5 AR-1248-2	5.939	4.980	67796	1731248	1.309	78.669 #
23) L5 AR-1248-3	6.149	5.019	236219	2138879	4.180	91.095 #
24) L5 AR-1248-4	6.548	5.174	1560648	1746700	27.530	65.483 #
25) L5 AR-1248-5	6.587	5.575	4455090	622785	75.321	26.393 #
26) L6 AR-1254-1	6.522	5.508	5149275	983766	81.523	25.656 #
27) L6 AR-1254-2	6.739	5.671	1502964	733849	15.661	21.316 #
28) L6 AR-1254-3	7.108	6.082	10853113	646626	115.345	12.444 #
29) L6 AR-1254-4	7.404	6.315	1549034	531658	26.605	19.369 #
30) L6 AR-1254-5	7.804	6.733	960955	71300	13.758	1.646 #
31) L7 AR-1260-1	7.263	6.215	711799	876319	9.789	23.884 #
32) L7 AR-1260-2	7.530	6.377	2396631	2898836	29.106	69.085 #
33) L7 AR-1260-3	7.858	6.552	1680212	31398	27.160	0.785 #
34) L7 AR-1260-4	8.120	7.026	941468	82929	13.966	2.575 #
35) L7 AR-1260-5	8.420	7.263	1078132	297223	8.298	4.242 #
36) L8 AR-1262-1	7.858	6.768	1680212	44759	19.319	0.989 #
37) L8 AR-1262-2	8.458	7.026	210238	82929	1.490	2.057 #
38) L8 AR-1262-3	8.754	7.551	17308	323695	0.175	10.427 #
39) L8 AR-1262-4	8.843	7.608	94534	49561	1.232	0.915 #
40) L8 AR-1262-5	9.524	8.101	115779	82677	2.387	3.348 #
41) L9 AR-1268-1	8.754	7.551	17308	323695	0.100	3.542 #

Data Path : Z:\pestpcbsrv\HPCHEM1\ECD_0\Data\P0100323\
 Data File : P0098489.D
 Signal(s) : Signal #1: ECD1A.ch Signal #2: ECD2B.ch
 Acq On : 03 Oct 2023 20:29
 Operator : YP/AJ
 Sample : I.BLK
 Misc :
 ALS Vial : 2 Sample Multiplier: 1

Instrument :
 ECD_0
 ClientSampleId :
 I.BLK

Integration File signal 1: autoint1.e
 Integration File signal 2: autoint2.e
 Quant Time: Oct 04 01:34:12 2023
 Quant Method : Z:\pestpcbsrv\HPCHEM1\ECD_0\methods\P0092723.M
 Quant Title : GC EXTRACTABLES
 QLast Update : Thu Sep 28 01:18:56 2023
 Response via : Initial Calibration
 Integrator: ChemStation

Volume Inj. : 2 µl
 Signal #1 Phase : ZB-MR1 Signal #2 Phase: ZB-MR2
 Signal #1 Info : 30Mx0.32mmx 0.50µ Signal #2 Info : 30M x 0.32mm x 0.25µm

	Compound	RT#1	RT#2	Resp#1	Resp#2	ng/ml	ng/ml
42)	L9 AR-1268-2	8.862	7.608	29997	49561	0.192	0.639 #
43)	L9 AR-1268-3	9.092	7.820	43311	25300	0.317	0.382
44)	L9 AR-1268-4	9.524	8.101	115779	82677	2.173	3.054 #
45)	L9 AR-1268-5	9.951	8.391	232433	97246	0.529	0.491

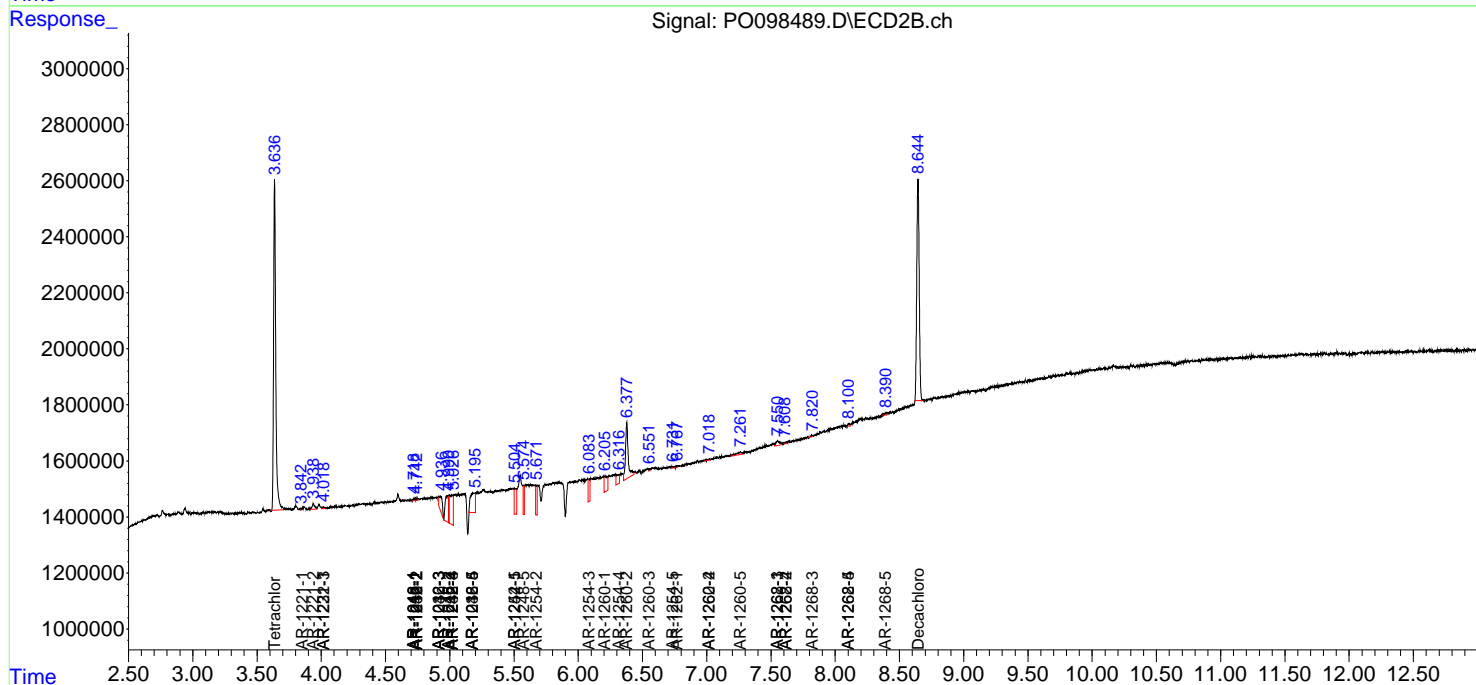
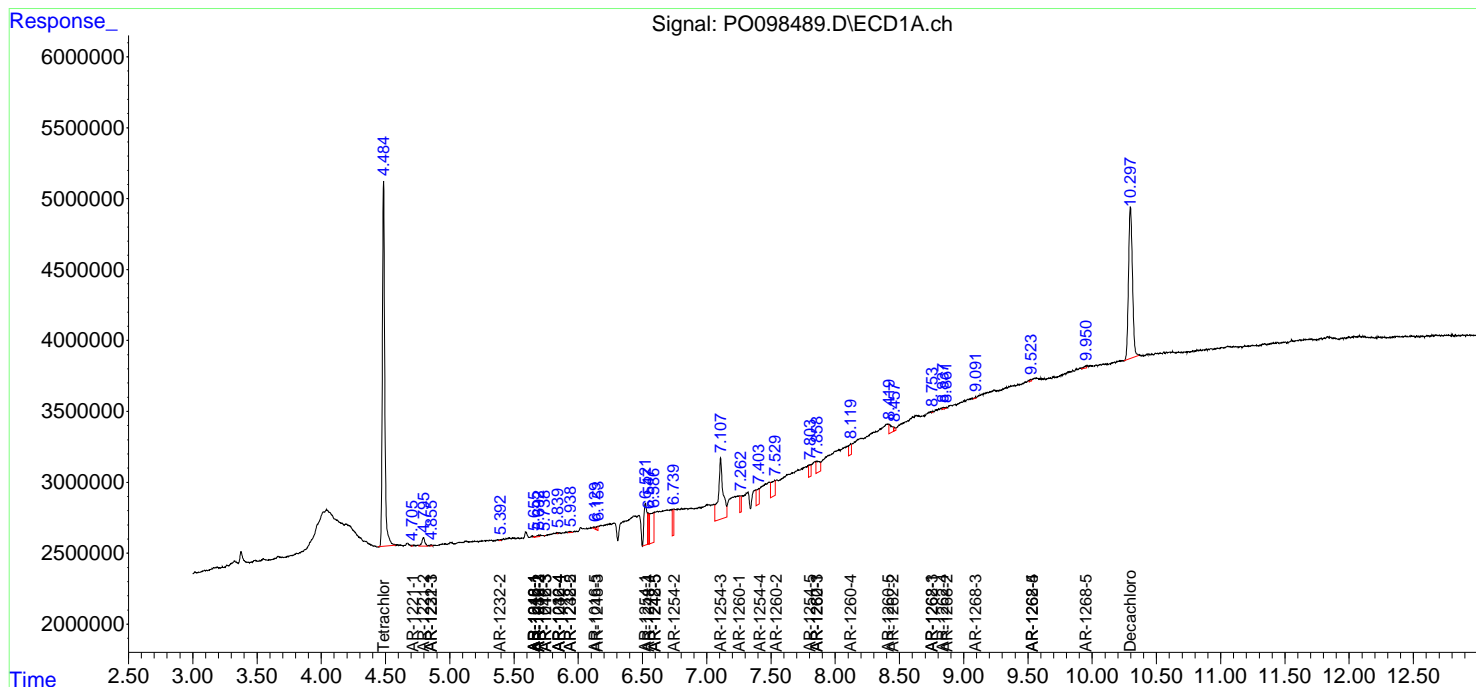
(f)=RT Delta > 1/2 Window (#)=Amounts differ by > 25% (m)=manual int.

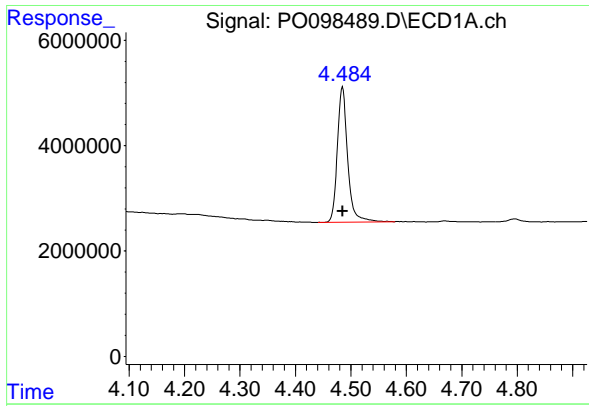
Data Path : Z:\pestpcbsrv\HPCHEM1\ECD_O\Data\PO100323\
 Data File : P0098489.D
 Signal(s) : Signal #1: ECD1A.ch Signal #2: ECD2B.ch
 Acq On : 03 Oct 2023 20:29
 Operator : YP/AJ
 Sample : I.BLK
 Misc :
 ALS Vial : 2 Sample Multiplier: 1

Instrument :
 ECD_O
 ClientSampleId :
 I.BLK

Integration File signal 1: autoint1.e
 Integration File signal 2: autoint2.e
 Quant Time: Oct 04 01:34:12 2023
 Quant Method : Z:\pestpcbsrv\HPCHEM1\ECD_O\methods\P0092723.M
 Quant Title : GC EXTRACTABLES
 QLast Update : Thu Sep 28 01:18:56 2023
 Response via : Initial Calibration
 Integrator: ChemStation

Volume Inj. : 2 µl
 Signal #1 Phase : ZB-MR1 Signal #2 Phase: ZB-MR2
 Signal #1 Info : 30Mx0.32mmx 0.50µ Signal #2 Info : 30M x 0.32mm x 0.25µm

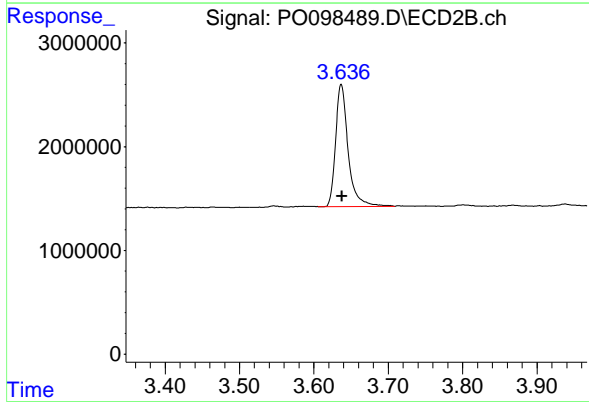




#1 Tetrachloro-m-xylene

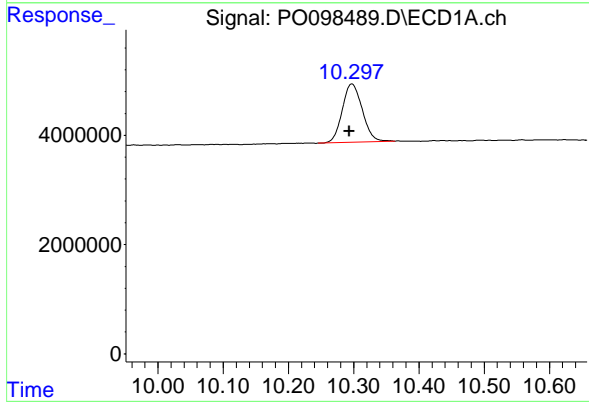
R.T.: 4.485 min
 Delta R.T.: 0.000 min
 Response: 33099228
 Conc: 17.24 ng/ml

Instrument :
 ECD_O
 ClientSampleId :
 I.BLK



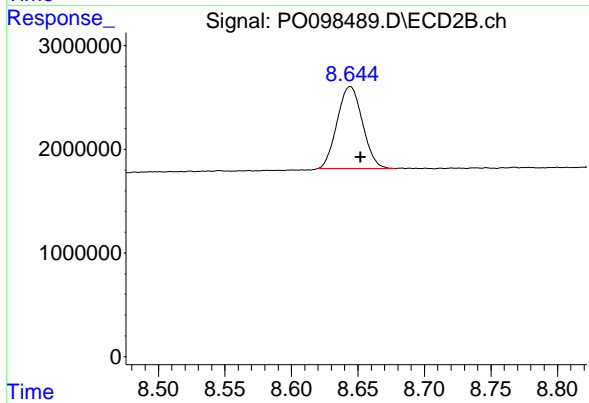
#1 Tetrachloro-m-xylene

R.T.: 3.637 min
 Delta R.T.: 0.000 min
 Response: 13744235
 Conc: 17.65 ng/ml



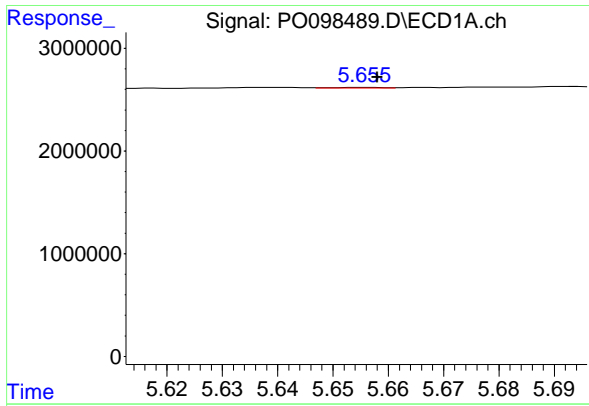
#2 Decachlorobiphenyl

R.T.: 10.297 min
 Delta R.T.: 0.004 min
 Response: 22699451
 Conc: 18.70 ng/ml



#2 Decachlorobiphenyl

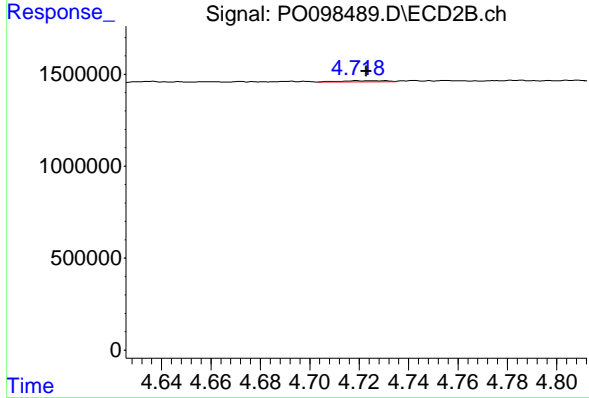
R.T.: 8.644 min
 Delta R.T.: -0.008 min
 Response: 10476555
 Conc: 19.55 ng/ml



#3 AR-1016-1

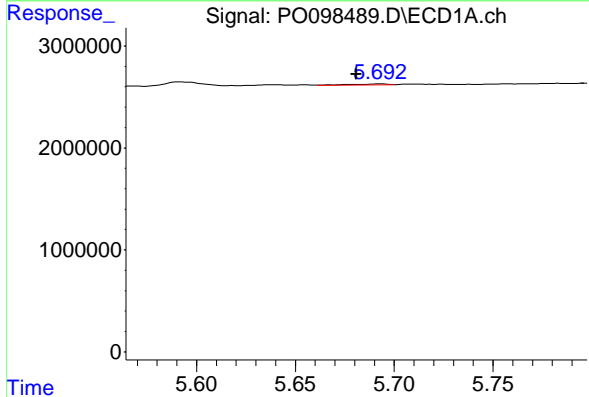
R.T.: 5.656 min
 Delta R.T.: -0.002 min
 Response: 38494
 Conc: 0.71 ng/ml

Instrument :
 ECD_O
 ClientSampleId :
 I.BLK



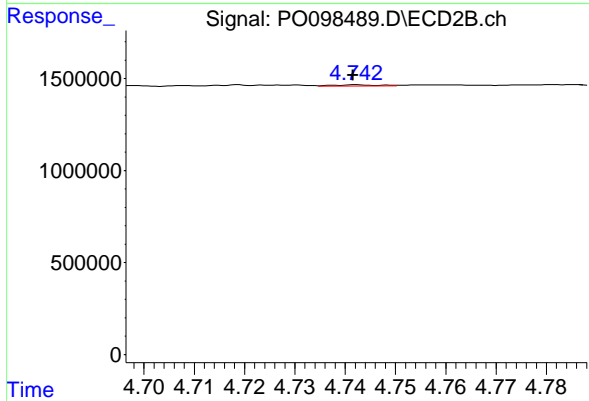
#3 AR-1016-1

R.T.: 4.719 min
 Delta R.T.: -0.004 min
 Response: 84820
 Conc: 3.55 ng/ml



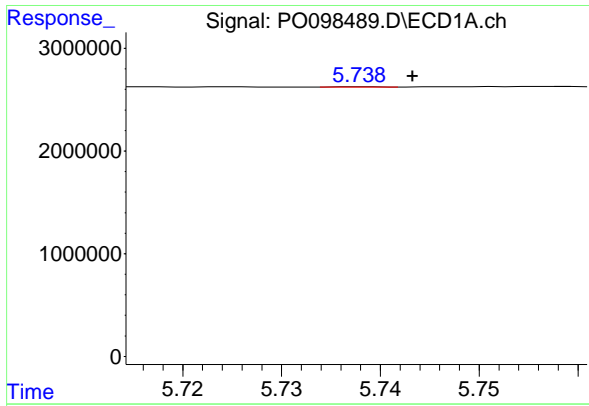
#4 AR-1016-2

R.T.: 5.693 min
 Delta R.T.: 0.012 min
 Response: 138278
 Conc: 1.70 ng/ml



#4 AR-1016-2

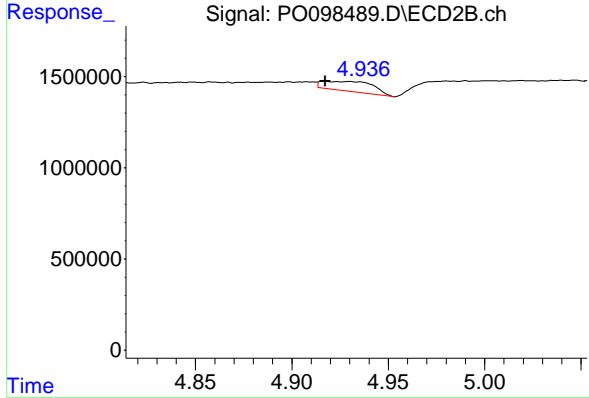
R.T.: 4.742 min
 Delta R.T.: 0.000 min
 Response: 41131
 Conc: 1.21 ng/ml



#5 AR-1016-3

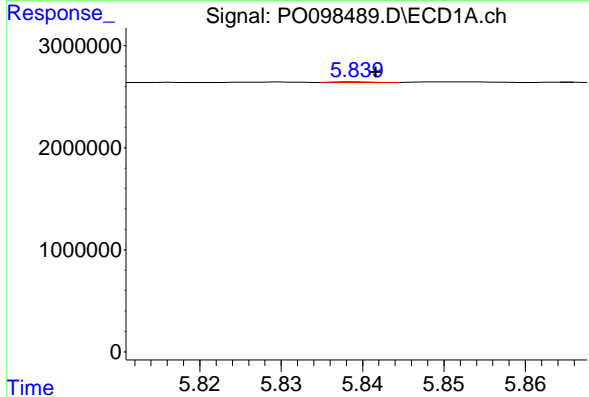
R.T.: 5.738 min
 Delta R.T.: -0.005 min
 Response: 4145
 Conc: 0.08 ng/ml

Instrument :
 ECD_O
 ClientSampleId :
 I.BLK



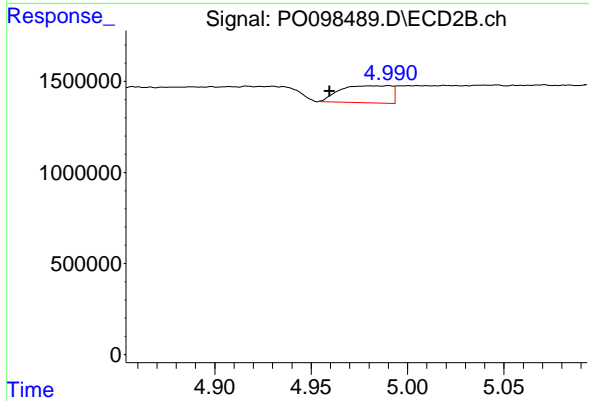
#5 AR-1016-3

R.T.: 4.917 min
 Delta R.T.: 0.000 min
 Response: 973187
 Conc: 54.10 ng/ml



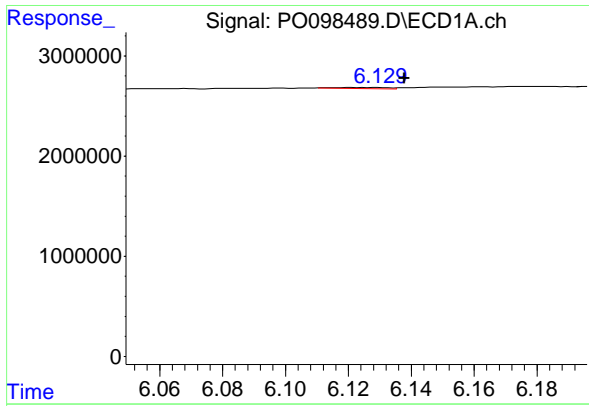
#6 AR-1016-4

R.T.: 5.840 min
 Delta R.T.: -0.002 min
 Response: 20212
 Conc: 0.52 ng/ml



#6 AR-1016-4

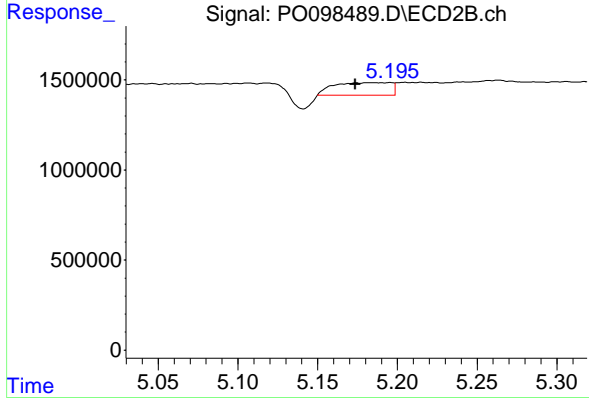
R.T.: 4.980 min
 Delta R.T.: 0.021 min
 Response: 1731248
 Conc: 115.48 ng/ml



#7 AR-1016-5

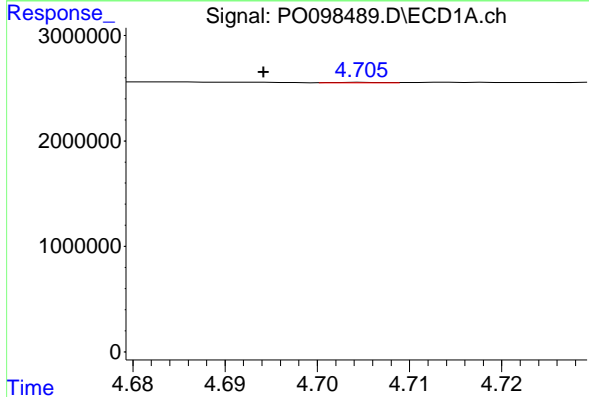
R.T.: 6.129 min
 Delta R.T.: -0.008 min
 Response: 143337
 Conc: 3.49 ng/ml

Instrument :
 ECD_O
 ClientSampleId :
 I.BLK



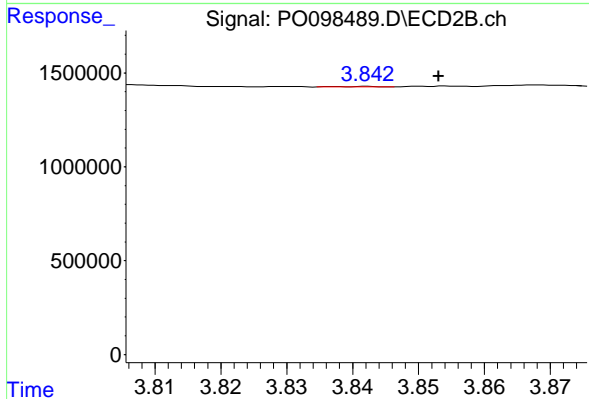
#7 AR-1016-5

R.T.: 5.174 min
 Delta R.T.: 0.000 min
 Response: 1746700
 Conc: 89.94 ng/ml



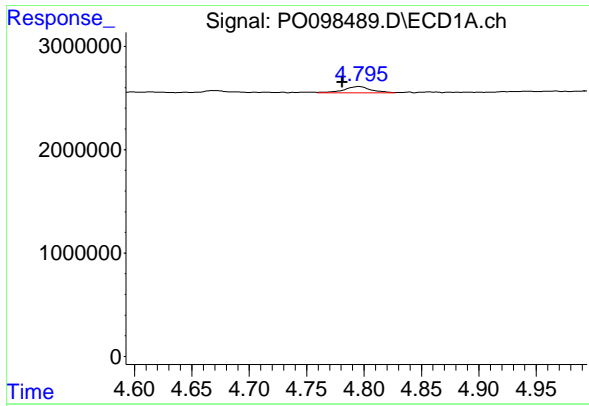
#8 AR-1221-1

R.T.: 4.705 min
 Delta R.T.: 0.011 min
 Response: 19398
 Conc: 0.86 ng/ml



#8 AR-1221-1

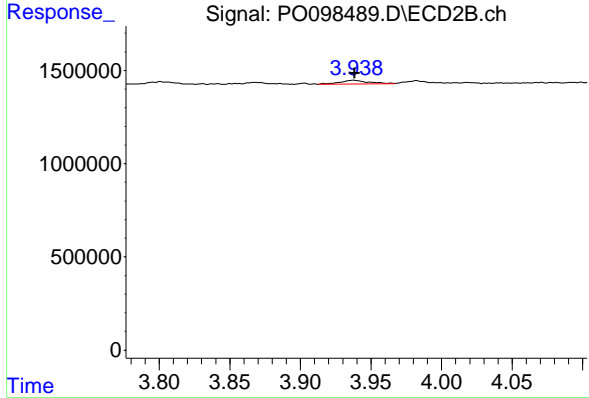
R.T.: 3.842 min
 Delta R.T.: -0.011 min
 Response: 11929
 Conc: 1.30 ng/ml



#9 AR-1221-2

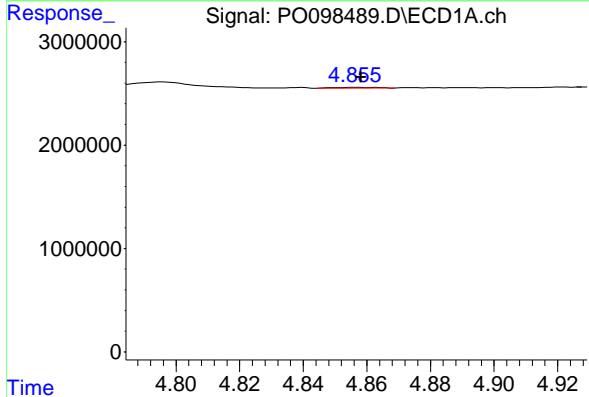
R.T.: 4.796 min
 Delta R.T.: 0.015 min
 Response: 986137
 Conc: 58.44 ng/ml

Instrument :
 ECD_O
 ClientSampleId :
 I.BLK



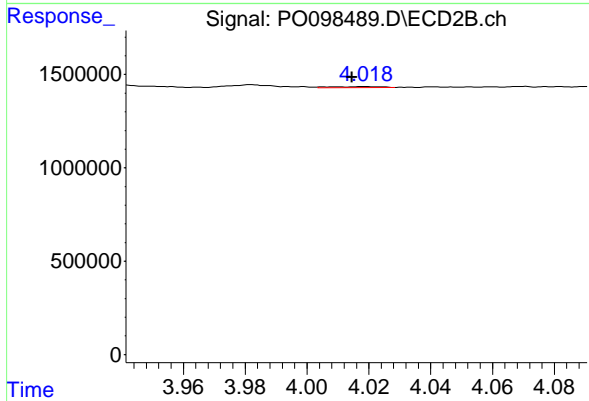
#9 AR-1221-2

R.T.: 3.938 min
 Delta R.T.: 0.000 min
 Response: 283652
 Conc: 42.66 ng/ml



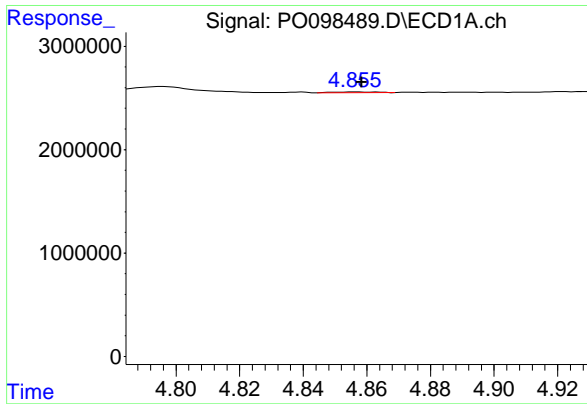
#10 AR-1221-3

R.T.: 4.856 min
 Delta R.T.: -0.002 min
 Response: 73328
 Conc: 1.50 ng/ml



#10 AR-1221-3

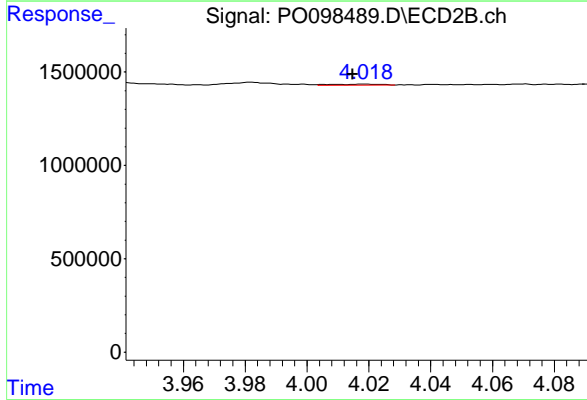
R.T.: 4.019 min
 Delta R.T.: 0.004 min
 Response: 56223
 Conc: 2.79 ng/ml



#11 AR-1232-1

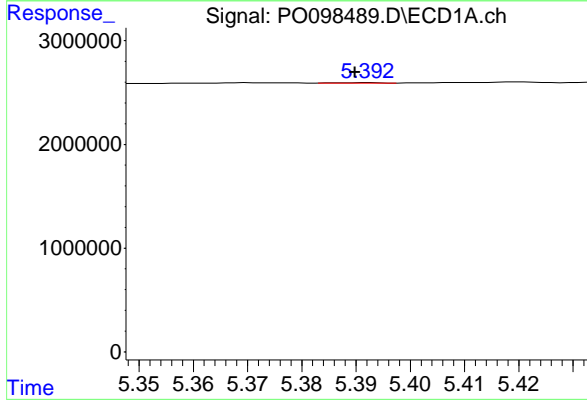
R.T.: 4.856 min
 Delta R.T.: -0.002 min
 Response: 73328
 Conc: 1.80 ng/ml

Instrument :
 ECD_O
 ClientSampleId :
 I.BLK



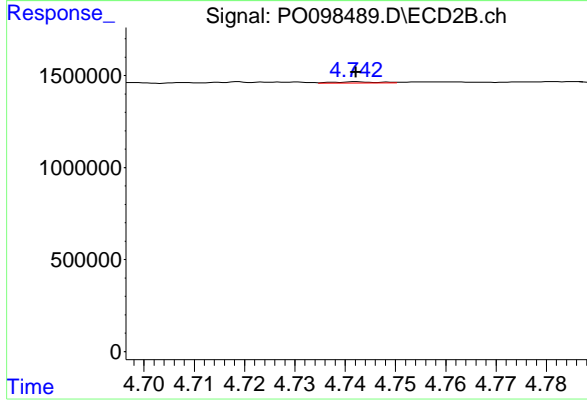
#11 AR-1232-1

R.T.: 4.019 min
 Delta R.T.: 0.004 min
 Response: 56223
 Conc: 3.34 ng/ml



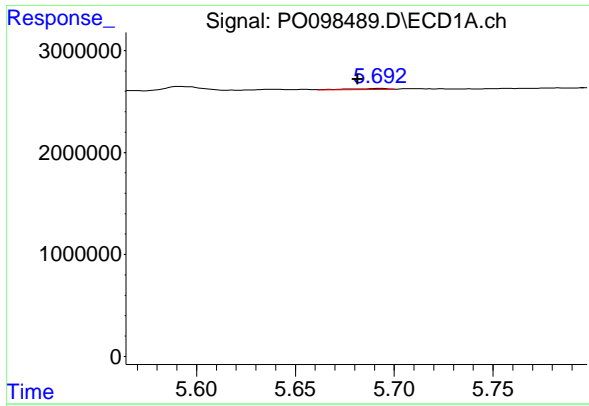
#12 AR-1232-2

R.T.: 5.392 min
 Delta R.T.: 0.002 min
 Response: 28705
 Conc: 1.33 ng/ml



#12 AR-1232-2

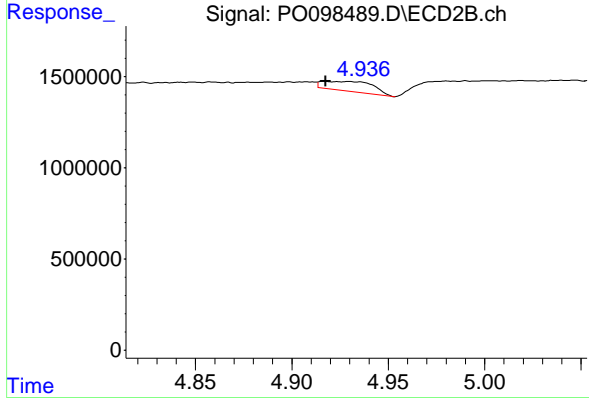
R.T.: 4.742 min
 Delta R.T.: 0.000 min
 Response: 41131
 Conc: 2.74 ng/ml



#13 AR-1232-3

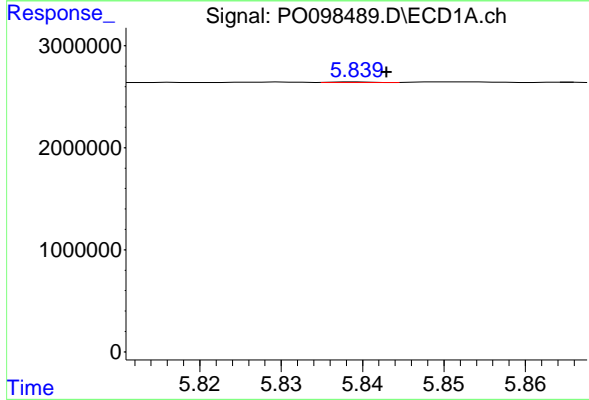
R.T.: 5.693 min
 Delta R.T.: 0.011 min
 Response: 138278
 Conc: 3.89 ng/ml

Instrument :
 ECD_O
 ClientSampleId :
 I.BLK



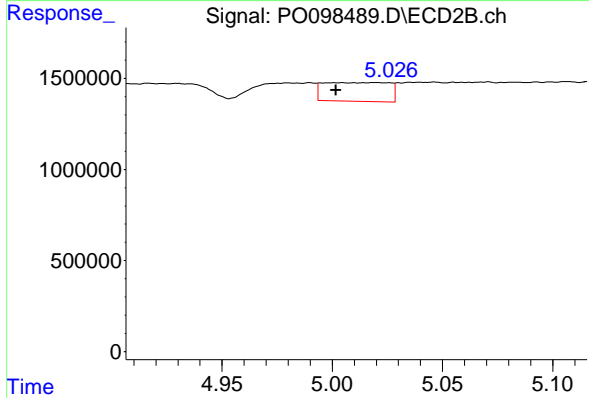
#13 AR-1232-3

R.T.: 4.917 min
 Delta R.T.: 0.000 min
 Response: 973187
 Conc: 124.34 ng/ml



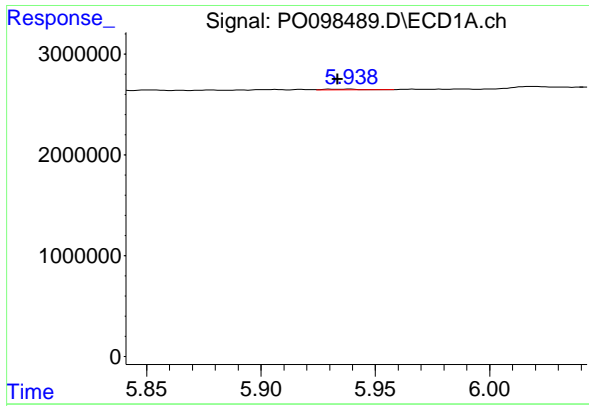
#14 AR-1232-4

R.T.: 5.840 min
 Delta R.T.: -0.003 min
 Response: 20212
 Conc: 1.19 ng/ml



#14 AR-1232-4

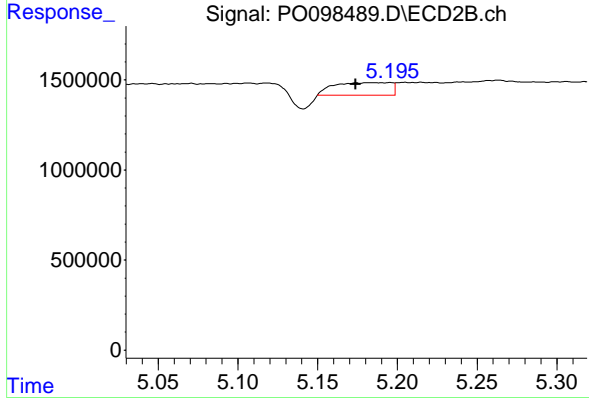
R.T.: 5.019 min
 Delta R.T.: 0.018 min
 Response: 2138879
 Conc: 284.46 ng/ml



#15 AR-1232-5

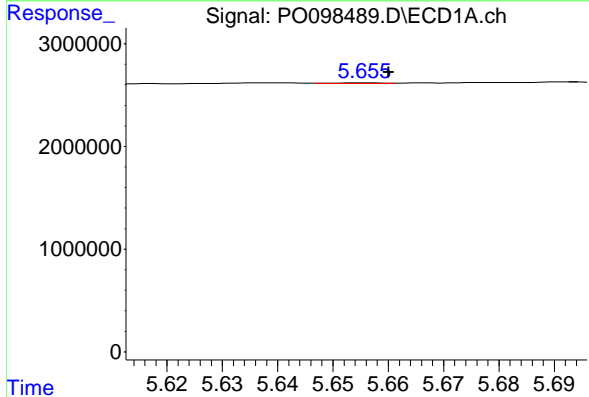
R.T.: 5.939 min
 Delta R.T.: 0.006 min
 Response: 67796
 Conc: 4.76 ng/ml

Instrument :
 ECD_O
 ClientSampleId :
 I.BLK



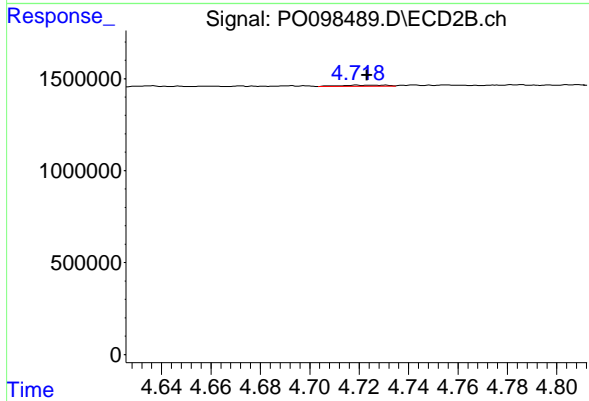
#15 AR-1232-5

R.T.: 5.174 min
 Delta R.T.: 0.000 min
 Response: 1746700
 Conc: 215.92 ng/ml



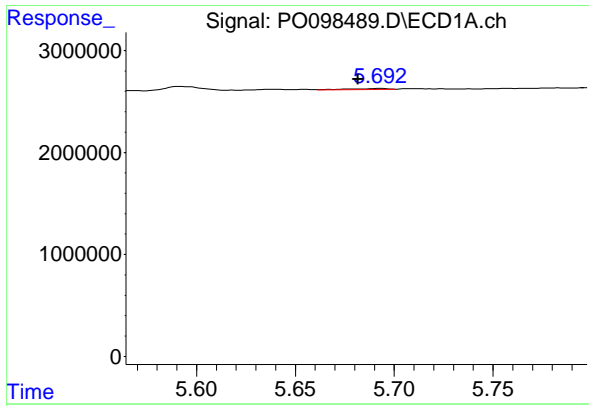
#16 AR-1242-1

R.T.: 5.656 min
 Delta R.T.: -0.005 min
 Response: 38494
 Conc: 0.85 ng/ml



#16 AR-1242-1

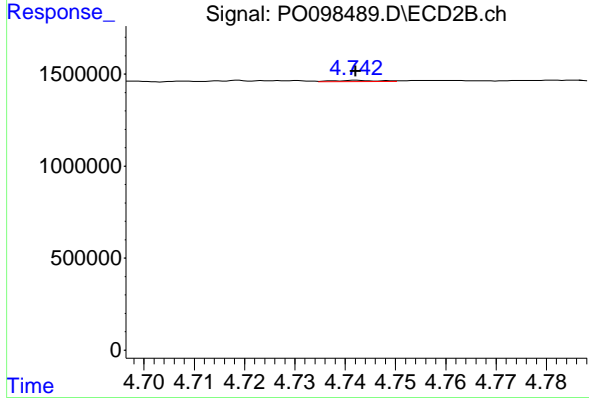
R.T.: 4.719 min
 Delta R.T.: -0.004 min
 Response: 84820
 Conc: 4.05 ng/ml



#17 AR-1242-2

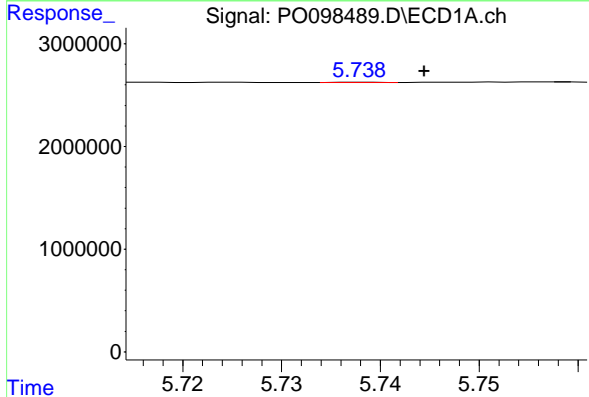
R.T.: 5.693 min
 Delta R.T.: 0.011 min
 Response: 138278
 Conc: 2.02 ng/ml

Instrument :
 ECD_O
 ClientSampleId :
 I.BLK



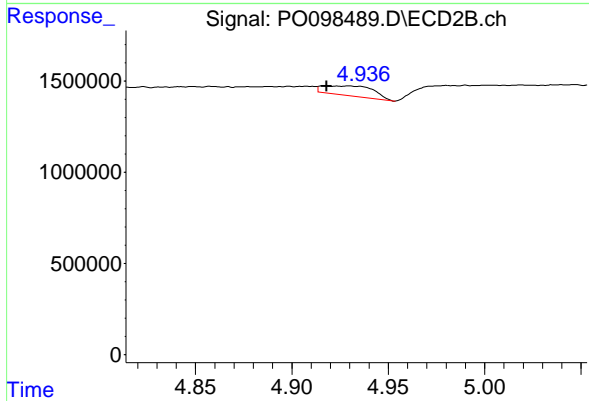
#17 AR-1242-2

R.T.: 4.742 min
 Delta R.T.: 0.000 min
 Response: 41131
 Conc: 1.41 ng/ml



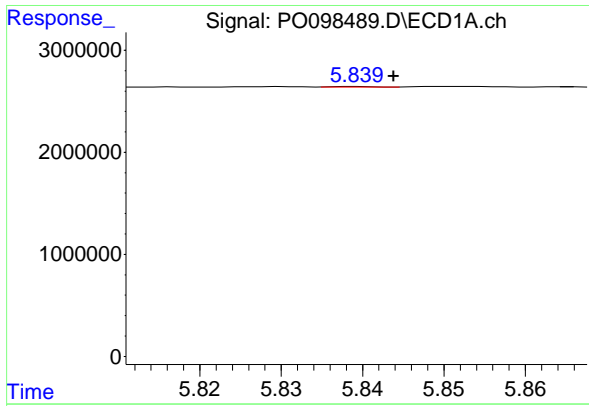
#18 AR-1242-3

R.T.: 5.738 min
 Delta R.T.: -0.006 min
 Response: 4145
 Conc: 0.10 ng/ml



#18 AR-1242-3

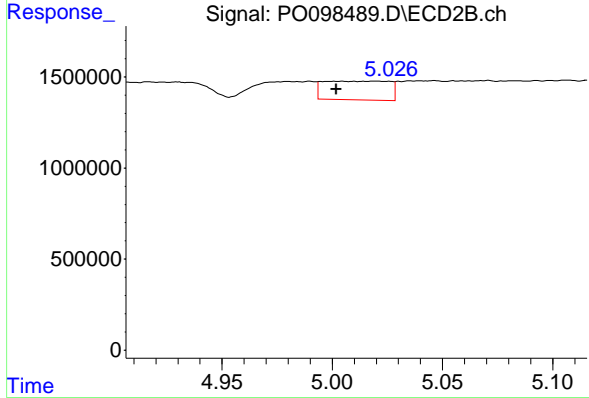
R.T.: 4.917 min
 Delta R.T.: -0.001 min
 Response: 973187
 Conc: 62.27 ng/ml



#19 AR-1242-4

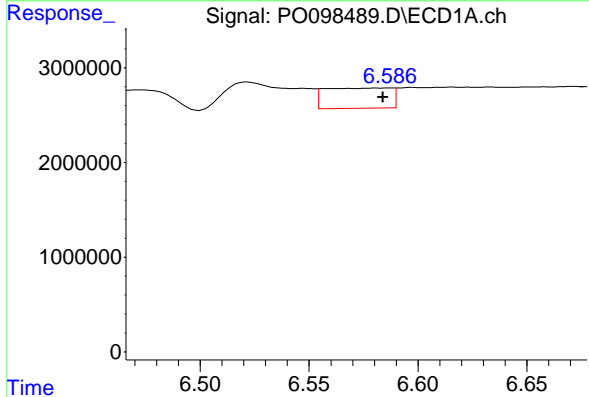
R.T.: 5.840 min
 Delta R.T.: -0.004 min
 Response: 20212
 Conc: 0.62 ng/ml

Instrument :
 ECD_O
 ClientSampleId :
 I.BLK



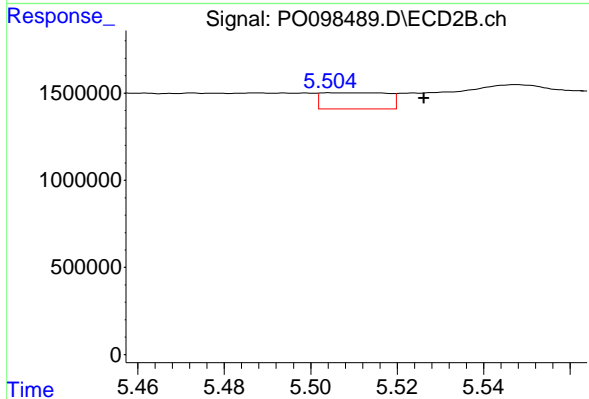
#19 AR-1242-4

R.T.: 5.019 min
 Delta R.T.: 0.018 min
 Response: 2138879
 Conc: 129.14 ng/ml



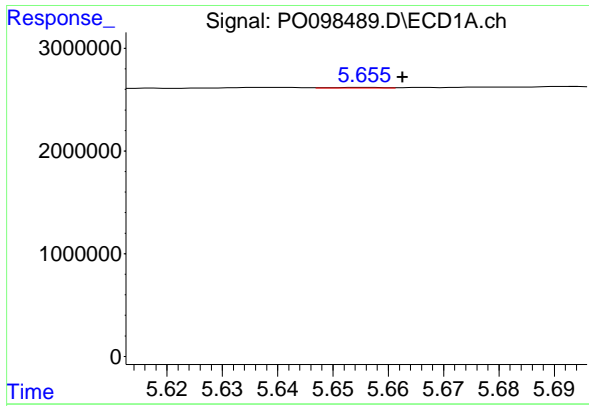
#20 AR-1242-5

R.T.: 6.587 min
 Delta R.T.: 0.003 min
 Response: 4455090
 Conc: 125.77 ng/ml



#20 AR-1242-5

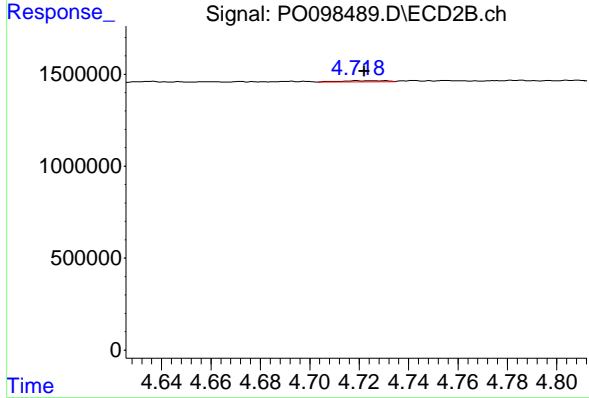
R.T.: 5.508 min
 Delta R.T.: -0.018 min
 Response: 983766
 Conc: 53.01 ng/ml



#21 AR-1248-1

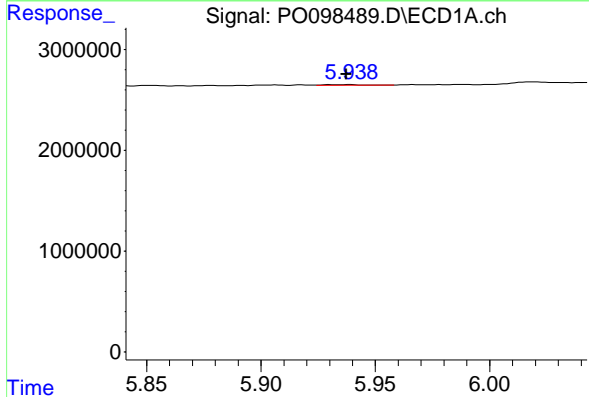
R.T.: 5.656 min
 Delta R.T.: -0.007 min
 Response: 38494
 Conc: 1.14 ng/ml

Instrument :
 ECD_O
 ClientSampleId :
 I.BLK



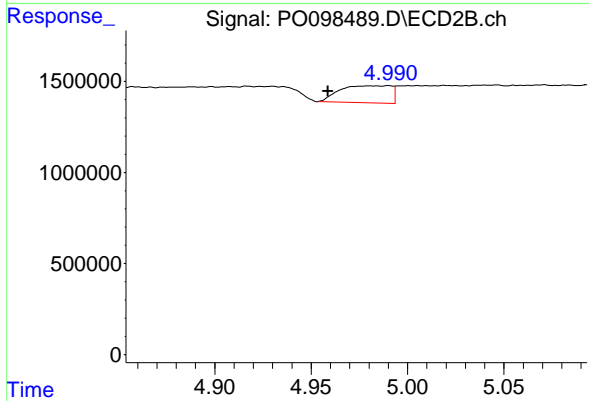
#21 AR-1248-1

R.T.: 4.719 min
 Delta R.T.: -0.003 min
 Response: 84820
 Conc: 5.41 ng/ml



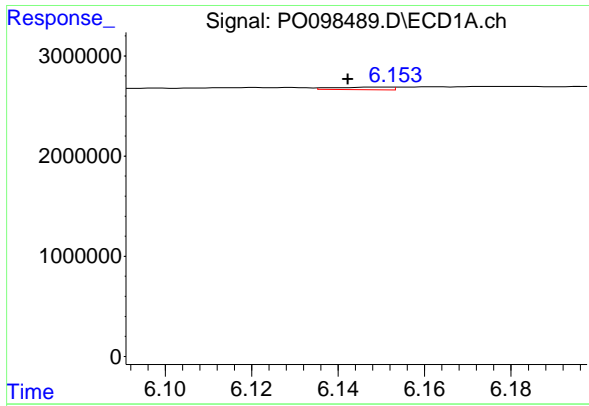
#22 AR-1248-2

R.T.: 5.939 min
 Delta R.T.: 0.002 min
 Response: 67796
 Conc: 1.31 ng/ml



#22 AR-1248-2

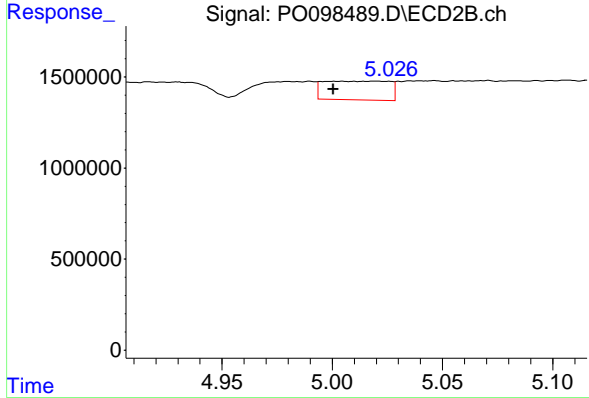
R.T.: 4.980 min
 Delta R.T.: 0.022 min
 Response: 1731248
 Conc: 78.67 ng/ml



#23 AR-1248-3

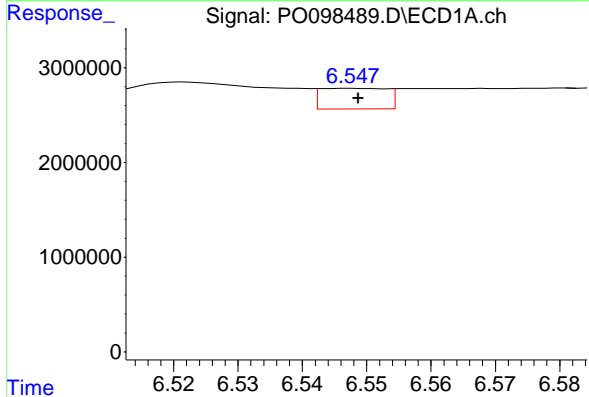
R.T.: 6.149 min
 Delta R.T.: 0.007 min
 Response: 236219
 Conc: 4.18 ng/ml

Instrument :
 ECD_O
 ClientSampleId :
 I.BLK



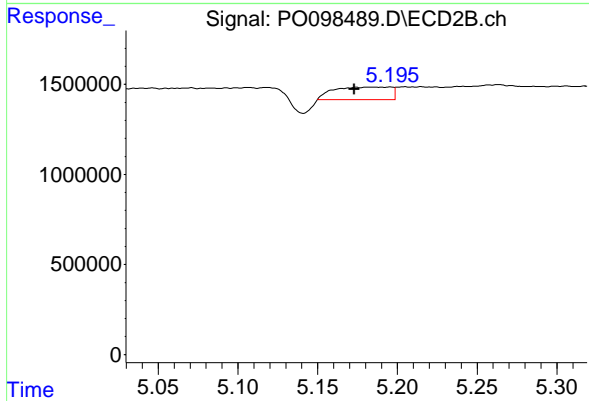
#23 AR-1248-3

R.T.: 5.019 min
 Delta R.T.: 0.019 min
 Response: 2138879
 Conc: 91.09 ng/ml



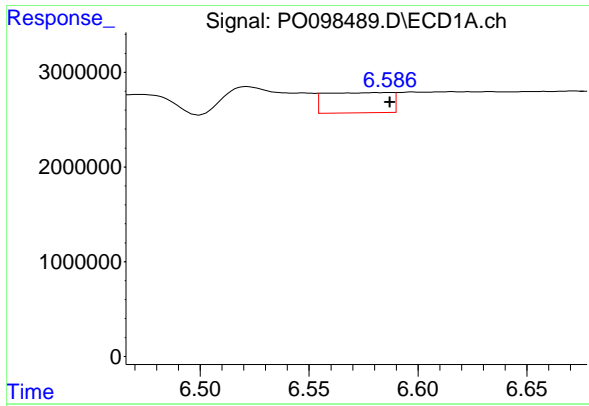
#24 AR-1248-4

R.T.: 6.548 min
 Delta R.T.: 0.000 min
 Response: 1560648
 Conc: 27.53 ng/ml



#24 AR-1248-4

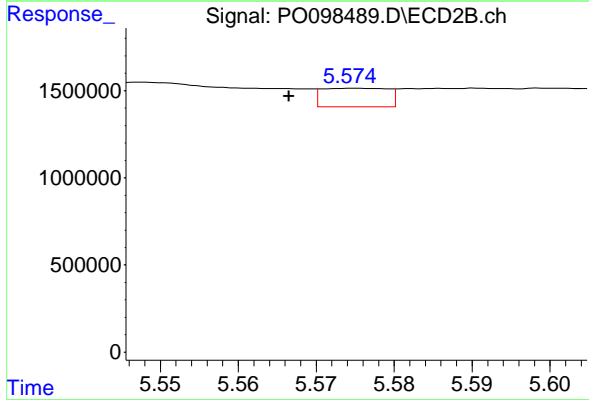
R.T.: 5.174 min
 Delta R.T.: 0.001 min
 Response: 1746700
 Conc: 65.48 ng/ml



#25 AR-1248-5

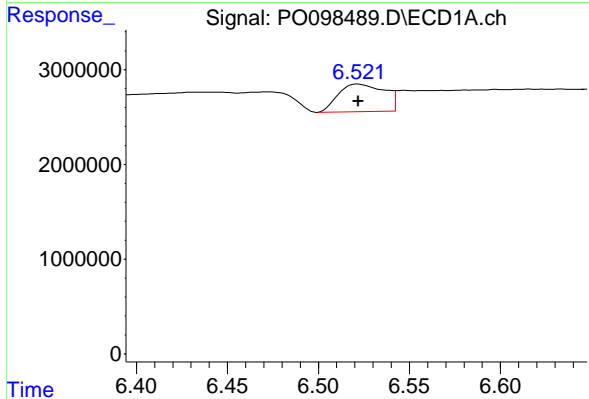
R.T.: 6.587 min
 Delta R.T.: 0.000 min
 Response: 4455090
 Conc: 75.32 ng/ml

Instrument :
 ECD_O
 ClientSampleId :
 I.BLK



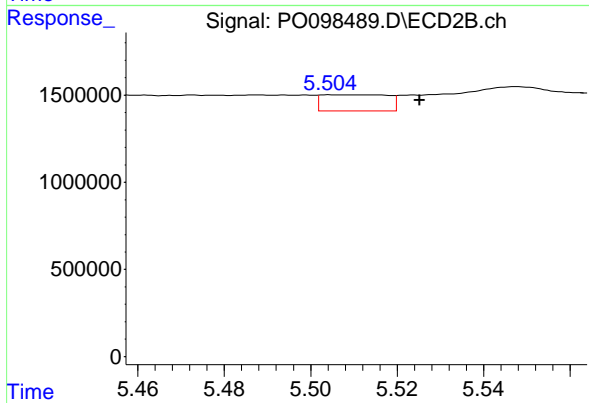
#25 AR-1248-5

R.T.: 5.575 min
 Delta R.T.: 0.009 min
 Response: 622785
 Conc: 26.39 ng/ml



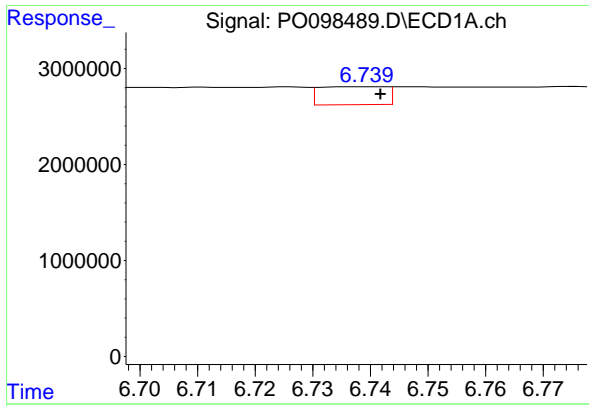
#26 AR-1254-1

R.T.: 6.522 min
 Delta R.T.: 0.000 min
 Response: 5149275
 Conc: 81.52 ng/ml



#26 AR-1254-1

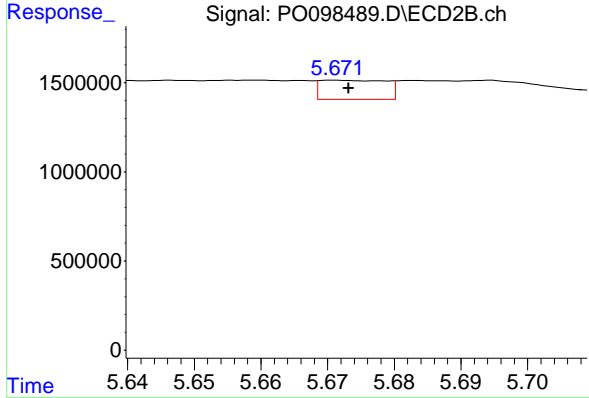
R.T.: 5.508 min
 Delta R.T.: -0.017 min
 Response: 983766
 Conc: 25.66 ng/ml



#27 AR-1254-2

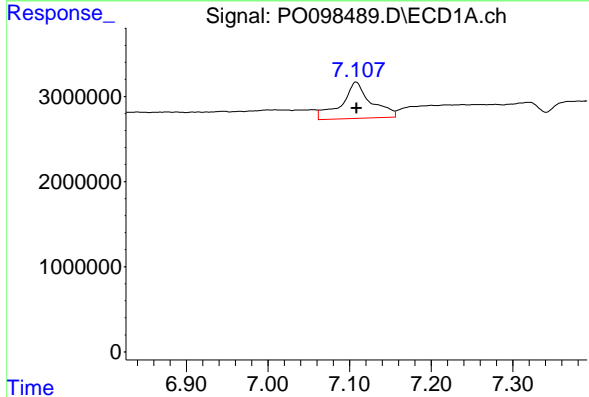
R.T.: 6.739 min
 Delta R.T.: -0.003 min
 Response: 1502964
 Conc: 15.66 ng/ml

Instrument :
 ECD_O
 ClientSampleId :
 I.BLK



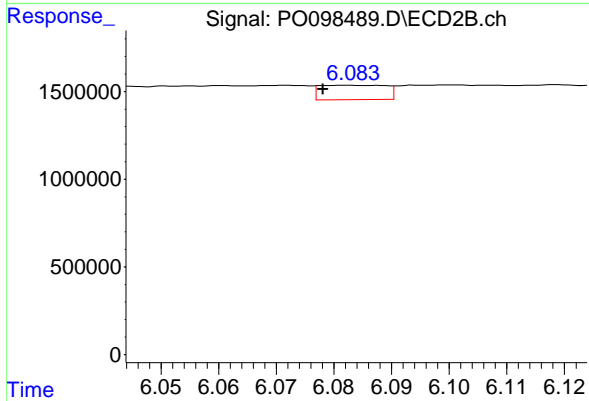
#27 AR-1254-2

R.T.: 5.671 min
 Delta R.T.: -0.002 min
 Response: 733849
 Conc: 21.32 ng/ml



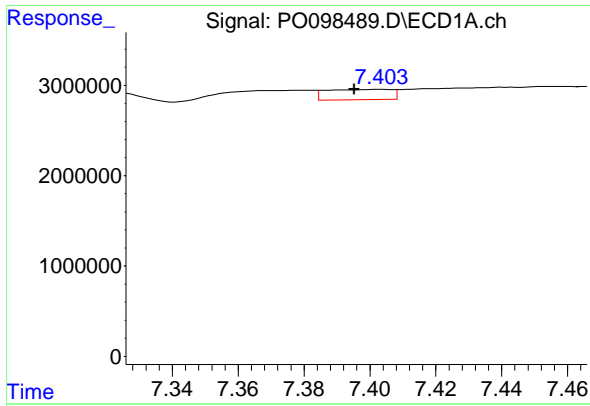
#28 AR-1254-3

R.T.: 7.108 min
 Delta R.T.: 0.000 min
 Response: 10853113
 Conc: 115.34 ng/ml



#28 AR-1254-3

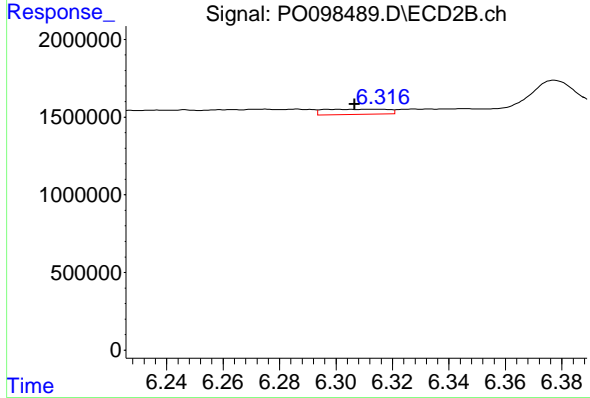
R.T.: 6.082 min
 Delta R.T.: 0.004 min
 Response: 646626
 Conc: 12.44 ng/ml



#29 AR-1254-4

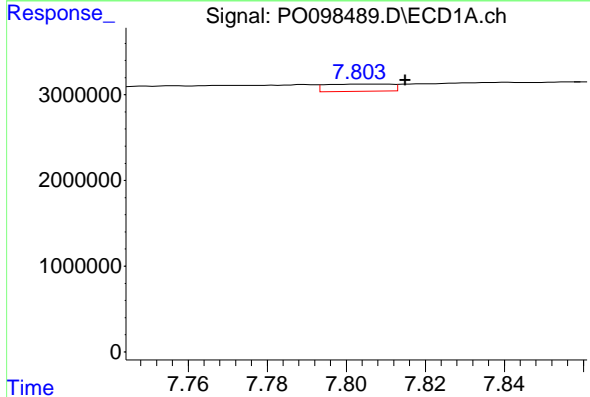
R.T.: 7.404 min
 Delta R.T.: 0.008 min
 Response: 1549034
 Conc: 26.60 ng/ml

Instrument :
 ECD_O
 ClientSampleId :
 I.BLK



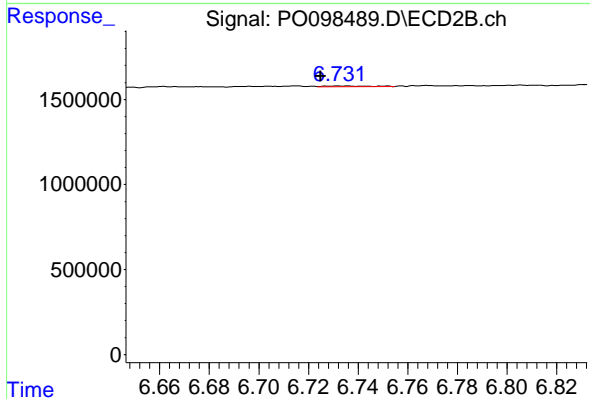
#29 AR-1254-4

R.T.: 6.315 min
 Delta R.T.: 0.009 min
 Response: 531658
 Conc: 19.37 ng/ml



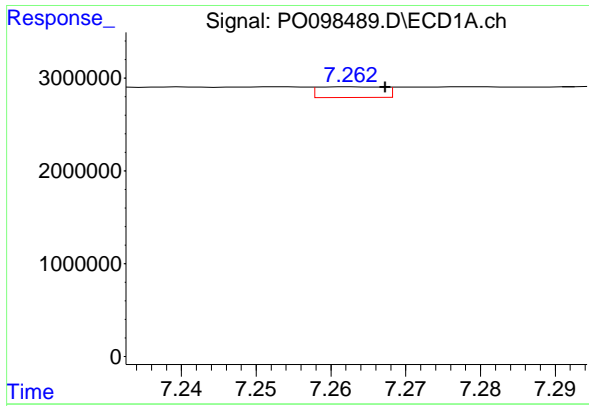
#30 AR-1254-5

R.T.: 7.804 min
 Delta R.T.: -0.011 min
 Response: 960955
 Conc: 13.76 ng/ml



#30 AR-1254-5

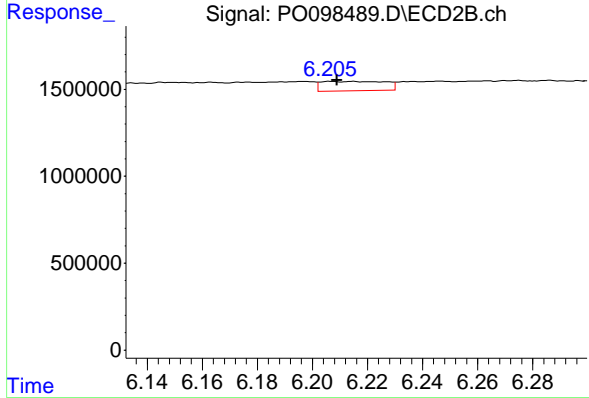
R.T.: 6.733 min
 Delta R.T.: 0.008 min
 Response: 71300
 Conc: 1.65 ng/ml



#31 AR-1260-1

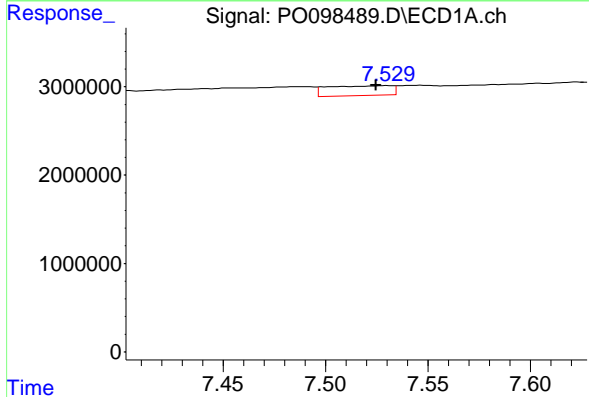
R.T.: 7.263 min
 Delta R.T.: -0.005 min
 Response: 711799
 Conc: 9.79 ng/ml

Instrument :
 ECD_O
 ClientSampleId :
 I.BLK



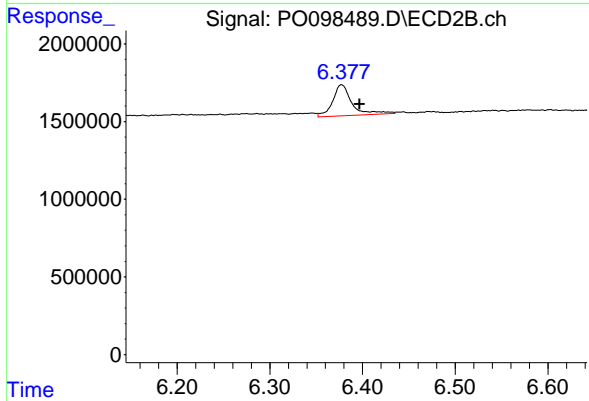
#31 AR-1260-1

R.T.: 6.215 min
 Delta R.T.: 0.006 min
 Response: 876319
 Conc: 23.88 ng/ml



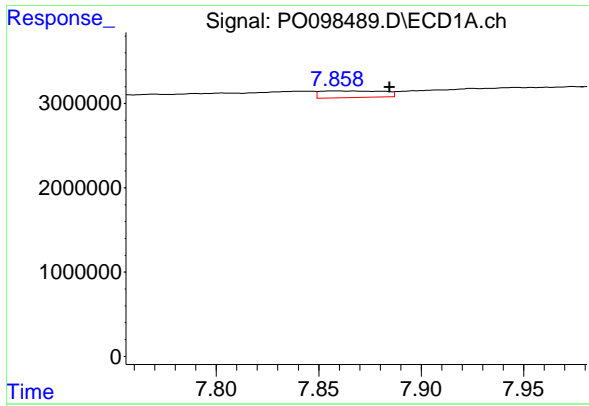
#32 AR-1260-2

R.T.: 7.530 min
 Delta R.T.: 0.005 min
 Response: 2396631
 Conc: 29.11 ng/ml



#32 AR-1260-2

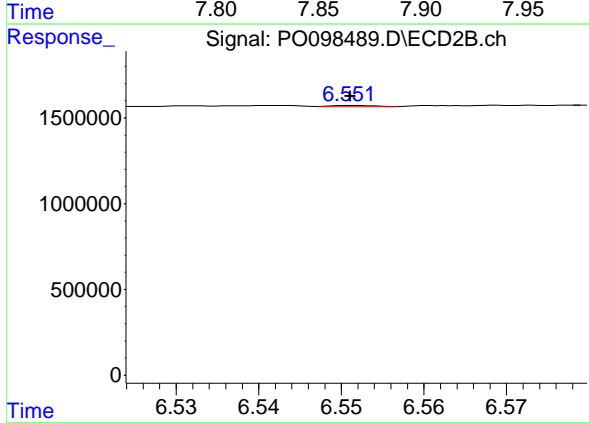
R.T.: 6.377 min
 Delta R.T.: -0.020 min
 Response: 2898836
 Conc: 69.08 ng/ml



#33 AR-1260-3

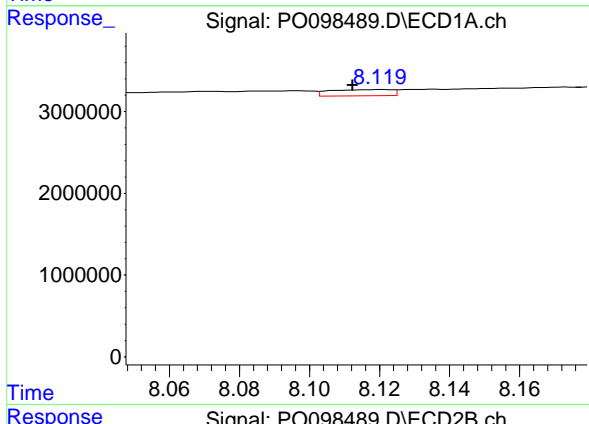
R.T.: 7.858 min
 Delta R.T.: -0.026 min
 Response: 1680212
 Conc: 27.16 ng/ml

Instrument :
 ECD_O
 ClientSampleId :
 I.BLK



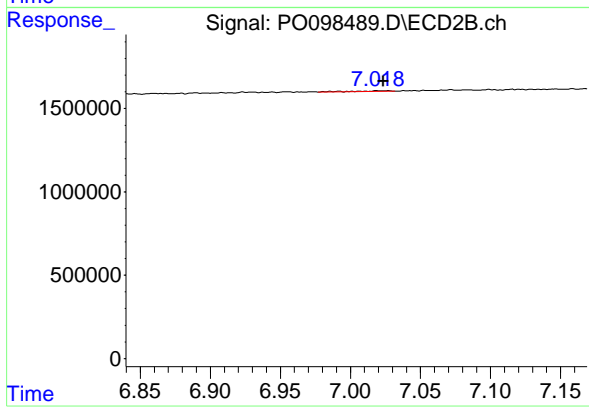
#33 AR-1260-3

R.T.: 6.552 min
 Delta R.T.: 0.000 min
 Response: 31398
 Conc: 0.78 ng/ml



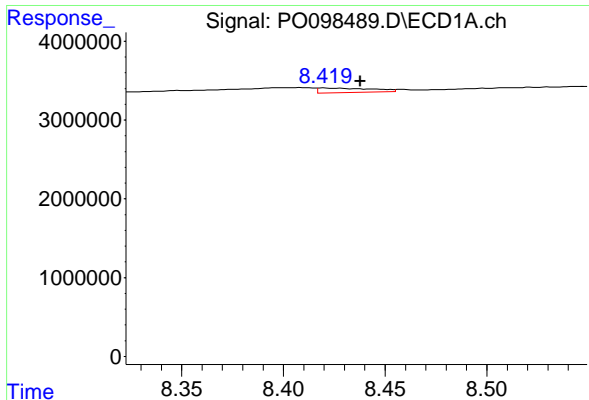
#34 AR-1260-4

R.T.: 8.120 min
 Delta R.T.: 0.008 min
 Response: 941468
 Conc: 13.97 ng/ml



#34 AR-1260-4

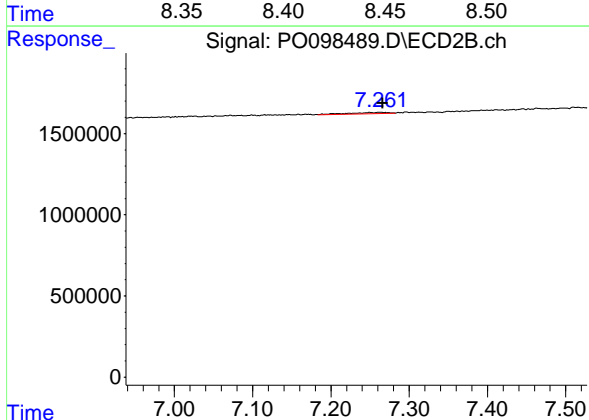
R.T.: 7.026 min
 Delta R.T.: 0.003 min
 Response: 82929
 Conc: 2.58 ng/ml



#35 AR-1260-5

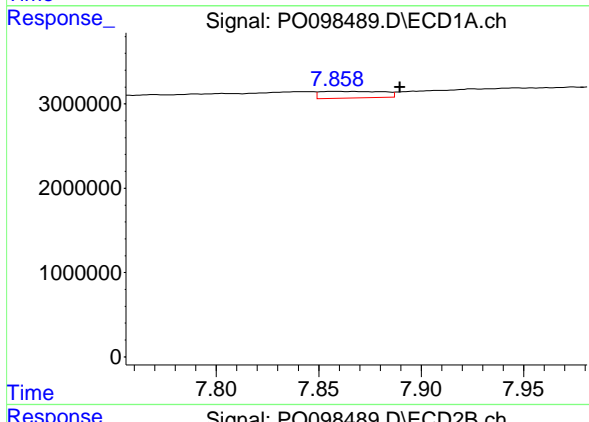
R.T.: 8.420 min
 Delta R.T.: -0.018 min
 Response: 1078132
 Conc: 8.30 ng/ml

Instrument :
 ECD_O
 ClientSampleId :
 I.BLK



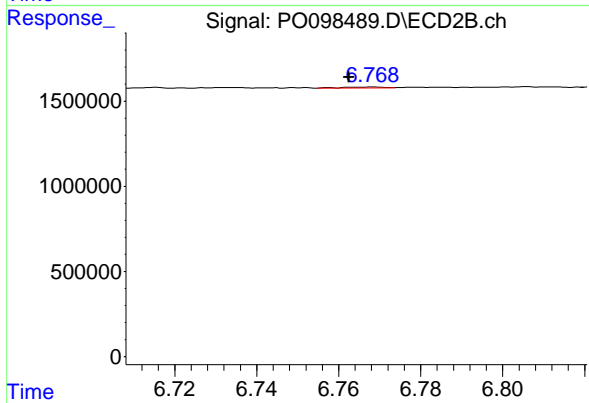
#35 AR-1260-5

R.T.: 7.263 min
 Delta R.T.: -0.003 min
 Response: 297223
 Conc: 4.24 ng/ml



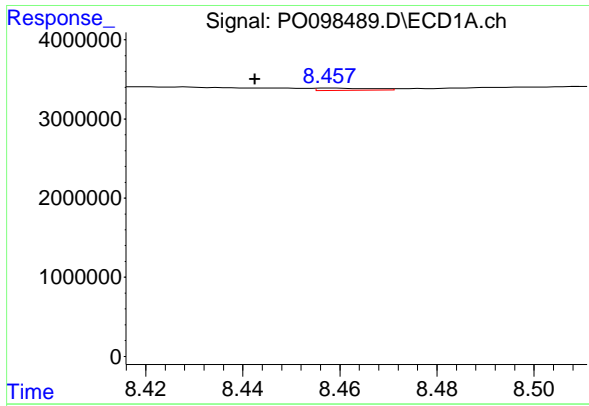
#36 AR-1262-1

R.T.: 7.858 min
 Delta R.T.: -0.031 min
 Response: 1680212
 Conc: 19.32 ng/ml



#36 AR-1262-1

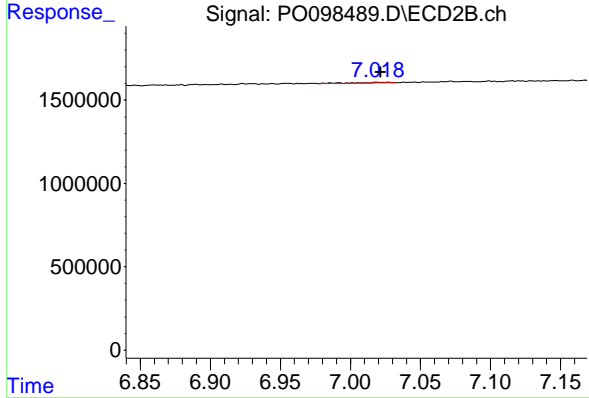
R.T.: 6.768 min
 Delta R.T.: 0.006 min
 Response: 44759
 Conc: 0.99 ng/ml



#37 AR-1262-2

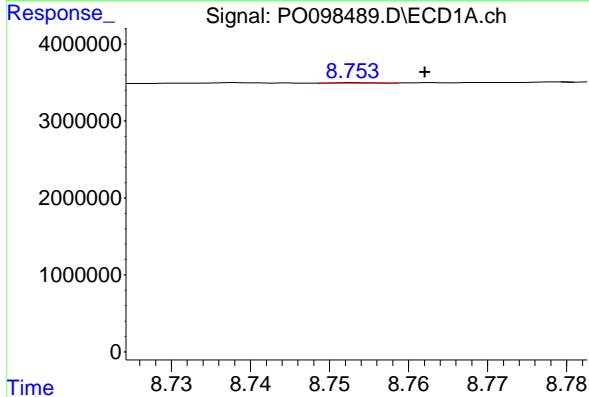
R.T.: 8.458 min
 Delta R.T.: 0.016 min
 Response: 210238
 Conc: 1.49 ng/ml

Instrument :
 ECD_O
 ClientSampleId :
 I.BLK



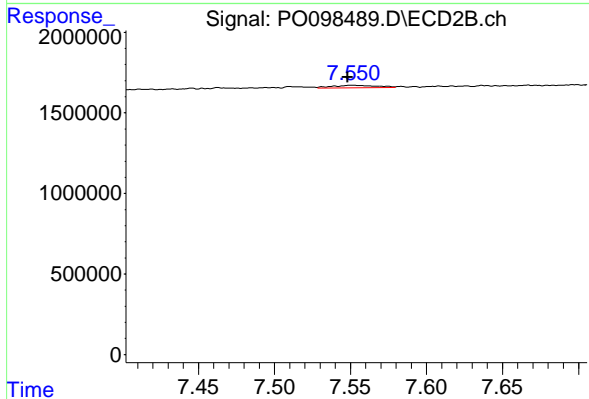
#37 AR-1262-2

R.T.: 7.026 min
 Delta R.T.: 0.004 min
 Response: 82929
 Conc: 2.06 ng/ml



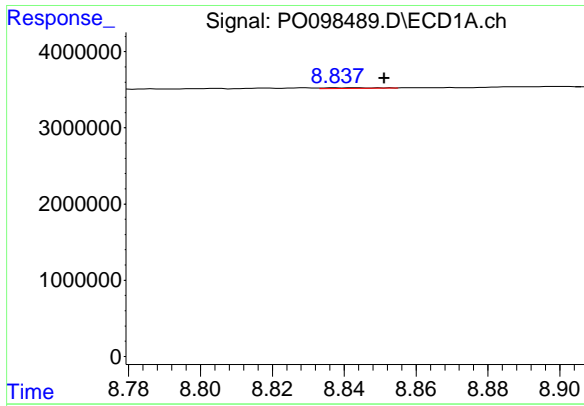
#38 AR-1262-3

R.T.: 8.754 min
 Delta R.T.: -0.008 min
 Response: 17308
 Conc: 0.18 ng/ml



#38 AR-1262-3

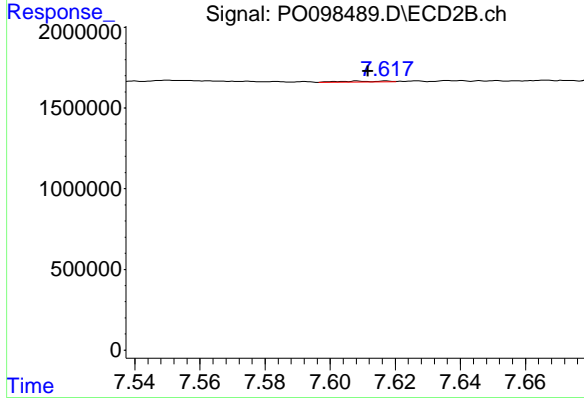
R.T.: 7.551 min
 Delta R.T.: 0.003 min
 Response: 323695
 Conc: 10.43 ng/ml



#39 AR-1262-4

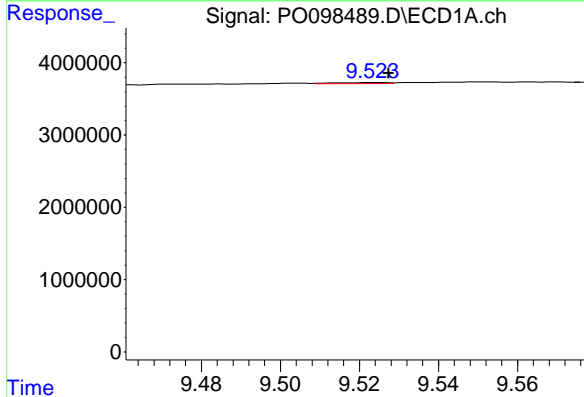
R.T.: 8.843 min
 Delta R.T.: -0.008 min
 Response: 94534
 Conc: 1.23 ng/ml

Instrument :
 ECD_O
 ClientSampleId :
 I.BLK



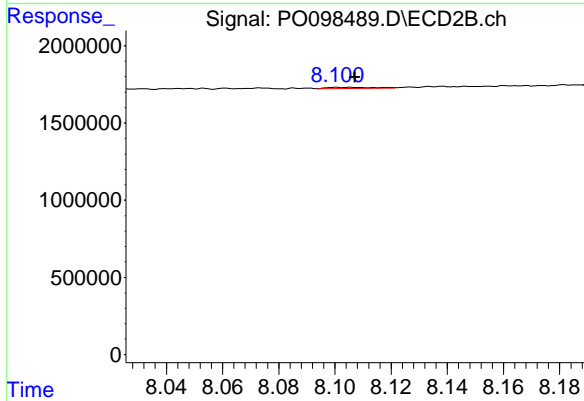
#39 AR-1262-4

R.T.: 7.608 min
 Delta R.T.: -0.003 min
 Response: 49561
 Conc: 0.91 ng/ml



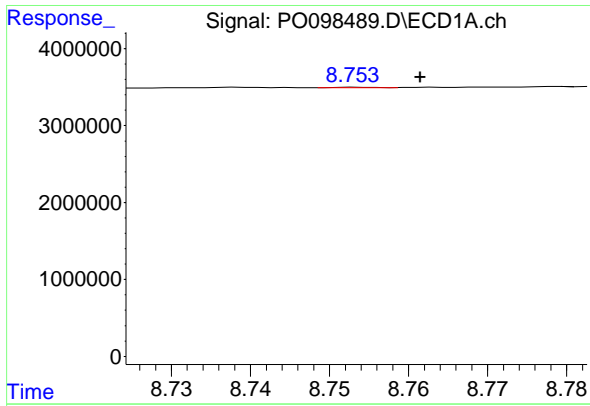
#40 AR-1262-5

R.T.: 9.524 min
 Delta R.T.: -0.003 min
 Response: 115779
 Conc: 2.39 ng/ml



#40 AR-1262-5

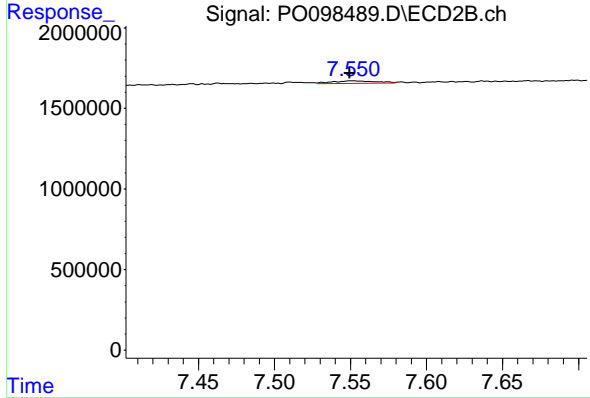
R.T.: 8.101 min
 Delta R.T.: -0.007 min
 Response: 82677
 Conc: 3.35 ng/ml



#41 AR-1268-1

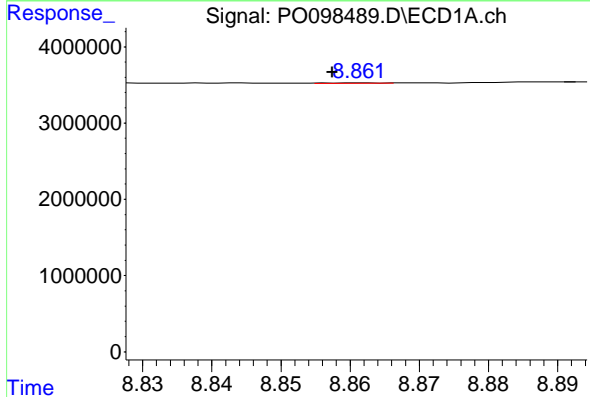
R.T.: 8.754 min
 Delta R.T.: -0.008 min
 Response: 17308
 Conc: 0.10 ng/ml

Instrument :
 ECD_O
 ClientSampleId :
 I.BLK



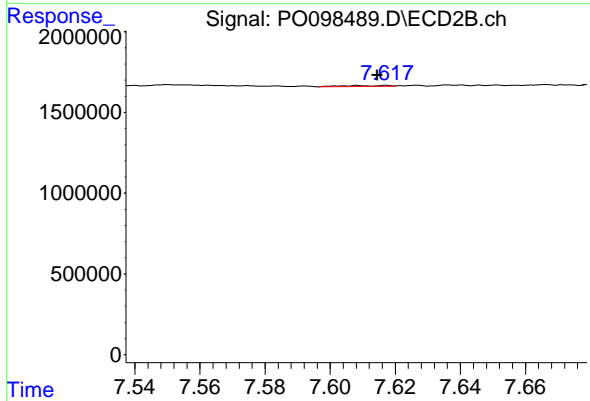
#41 AR-1268-1

R.T.: 7.551 min
 Delta R.T.: 0.001 min
 Response: 323695
 Conc: 3.54 ng/ml



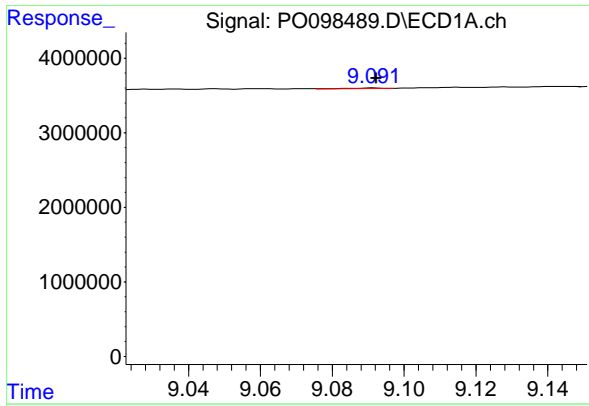
#42 AR-1268-2

R.T.: 8.862 min
 Delta R.T.: 0.004 min
 Response: 29997
 Conc: 0.19 ng/ml



#42 AR-1268-2

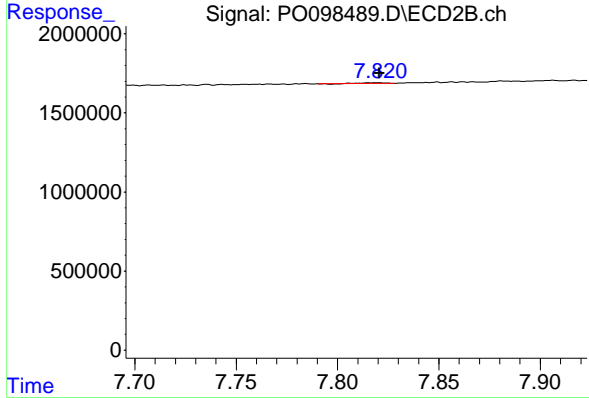
R.T.: 7.608 min
 Delta R.T.: -0.006 min
 Response: 49561
 Conc: 0.64 ng/ml



#43 AR-1268-3

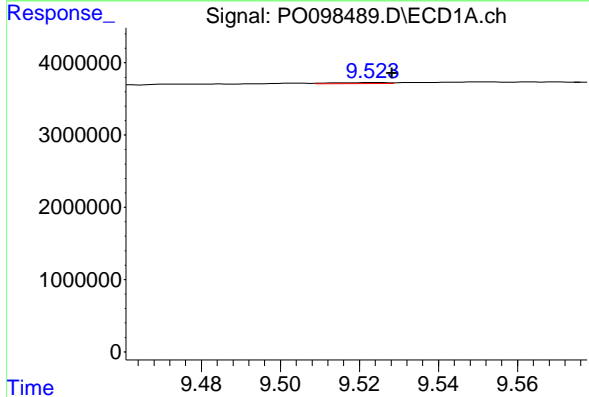
R.T.: 9.092 min
 Delta R.T.: 0.000 min
 Response: 43311
 Conc: 0.32 ng/ml

Instrument :
 ECD_O
 ClientSampleId :
 I.BLK



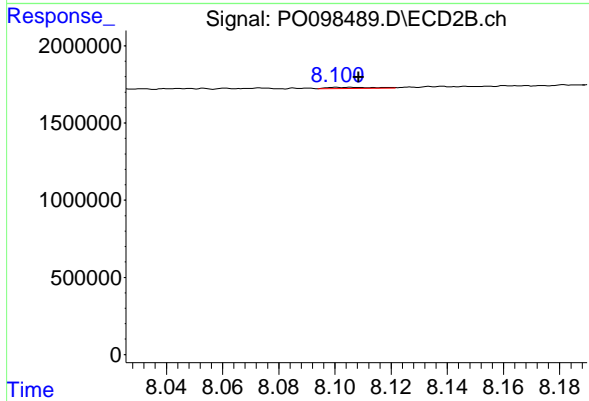
#43 AR-1268-3

R.T.: 7.820 min
 Delta R.T.: 0.000 min
 Response: 25300
 Conc: 0.38 ng/ml



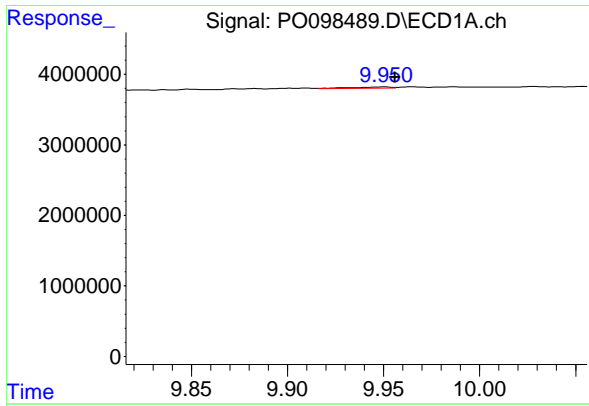
#44 AR-1268-4

R.T.: 9.524 min
 Delta R.T.: -0.004 min
 Response: 115779
 Conc: 2.17 ng/ml



#44 AR-1268-4

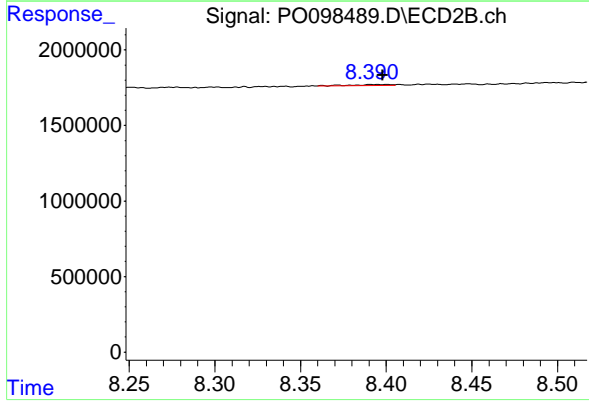
R.T.: 8.101 min
 Delta R.T.: -0.008 min
 Response: 82677
 Conc: 3.05 ng/ml



#45 AR-1268-5

R.T.: 9.951 min
 Delta R.T.: -0.005 min
 Response: 232433
 Conc: 0.53 ng/ml

Instrument :
 ECD_O
 ClientSampleId :
 I.BLK



#45 AR-1268-5

R.T.: 8.391 min
 Delta R.T.: -0.007 min
 Response: 97246
 Conc: 0.49 ng/ml