

Data Path : Z:\pestpcbsrv\HPCHEM1\ECD\_0\Data\PO100418\  
 Data File : PO049619.D  
 Signal(s) : Signal #1: ECD1A.CH Signal #2: ECD2B.CH  
 Acq On : 04 Oct 2018 18:51  
 Operator : SM/SJ  
 Sample : J5235-05  
 Misc :  
 ALS Vial : 19 Sample Multiplier: 1

**Instrument :**  
 ECD\_0  
**ClientSampled :**  
 CLEARWELL

**Manual Integrations**  
**APPROVED**

Sohil  
 10/5/2018 11:05:57 AM

Integration File signal 1: autoint1.e  
 Integration File signal 2: autoint2.e  
 Quant Time: Oct 05 00:59:31 2018  
 Quant Method : Z:\pestpcbsrv\HPCHEM1\ECD\_0\methods\PO100118.M  
 Quant Title : GC EXTRACTABLES  
 QLast Update : Tue Oct 02 05:32:25 2018  
 Response via : Initial Calibration  
 Integrator: ChemStation 6890 Scale Mode: Small noise peaks clipped

Volume Inj. : 2 µl  
 Signal #1 Phase : ZB-MR1 Signal #2 Phase: ZB-MR2  
 Signal #1 Info : 30Mx0.32mmx 0.50µ Signal #2 Info : 30M x 0.32mm x 0.25µm

Compound	RT#1	RT#2	Resp#1	Resp#2	ng/ml	ng/ml
-----						
System Monitoring Compounds						
1) SA Tetrachlo...	4.390	3.517	389308	2204787	1.102m	6.482m#
2) SA Decachlor...	10.100	8.445	6855169	1351196	14.467	4.422 #

Target Compounds

(f)=RT Delta > 1/2 Window (#)=Amounts differ by > 25% (m)=manual int.

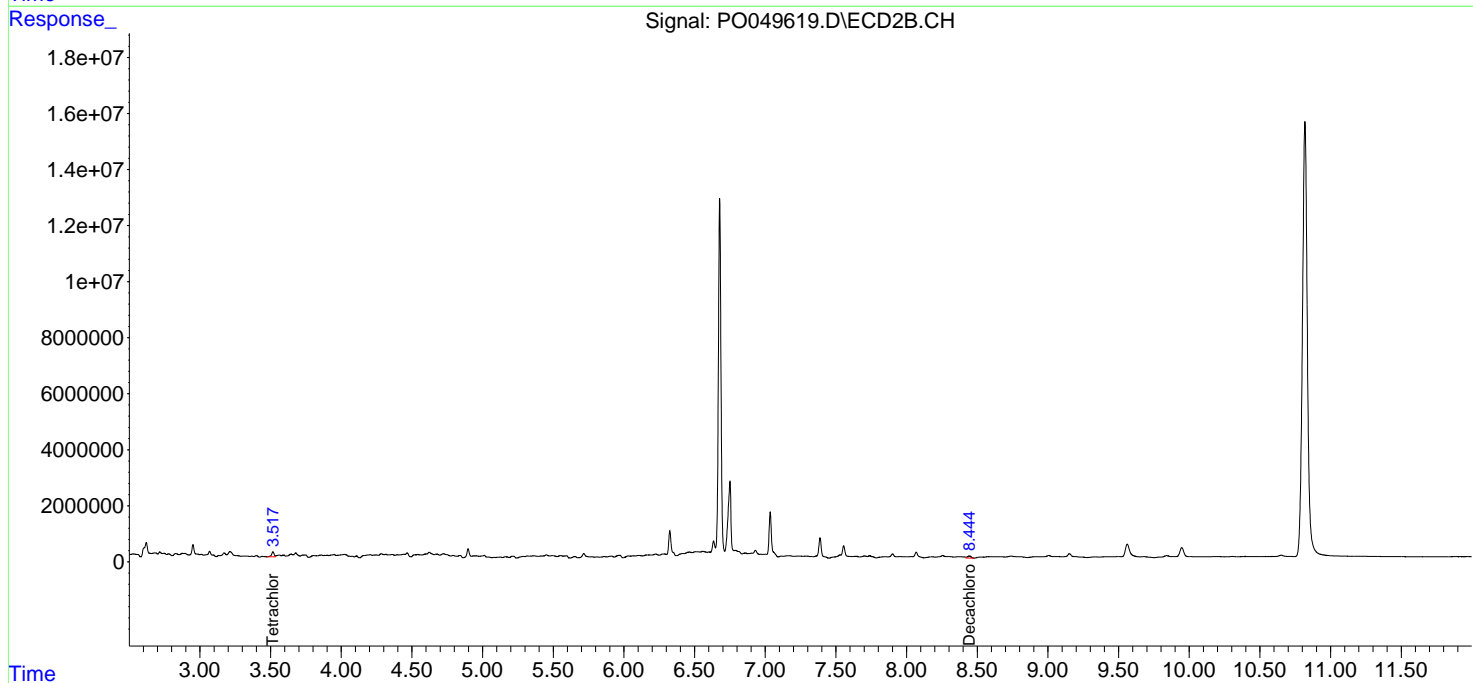
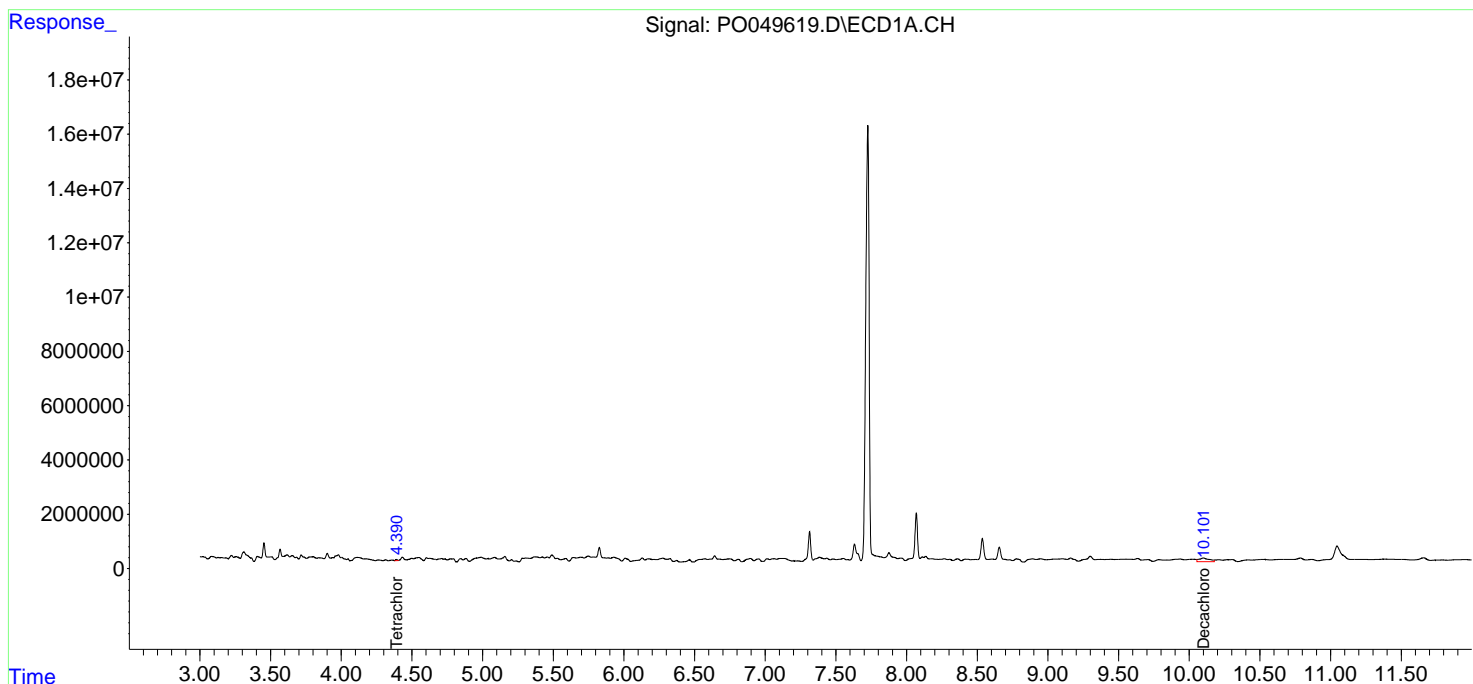
Data Path : Z:\pestpcbsrv\HPCHEM1\ECD\_0\Data\PO100418\  
 Data File : P0049619.D  
 Signal(s) : Signal #1: ECD1A.CH Signal #2: ECD2B.CH  
 Acq On : 04 Oct 2018 18:51  
 Operator : SM/SJ  
 Sample : J5235-05  
 Misc :  
 ALS Vial : 19 Sample Multiplier: 1

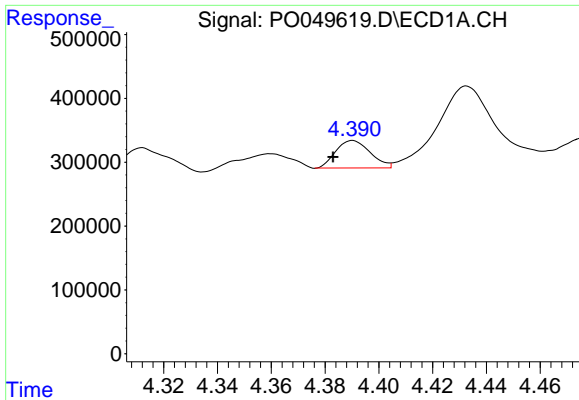
**Instrument :**  
 ECD\_O  
**ClientSampled :**  
 CLEARWELL

**Manual Integrations**  
**APPROVED**  
 Sohil  
 10/5/2018 11:05:57 AM

Integration File signal 1: autoint1.e  
 Integration File signal 2: autoint2.e  
 Quant Time: Oct 05 00:59:31 2018  
 Quant Method : Z:\pestpcbsrv\HPCHEM1\ECD\_0\methods\PO100118.M  
 Quant Title : GC EXTRACTABLES  
 QLast Update : Tue Oct 02 05:32:25 2018  
 Response via : Initial Calibration  
 Integrator: ChemStation 6890 Scale Mode: Small noise peaks clipped

Volume Inj. : 2 µl  
 Signal #1 Phase : ZB-MR1 Signal #2 Phase: ZB-MR2  
 Signal #1 Info : 30Mx0.32mmx 0.50µ Signal #2 Info : 30M x 0.32mm x 0.25µm

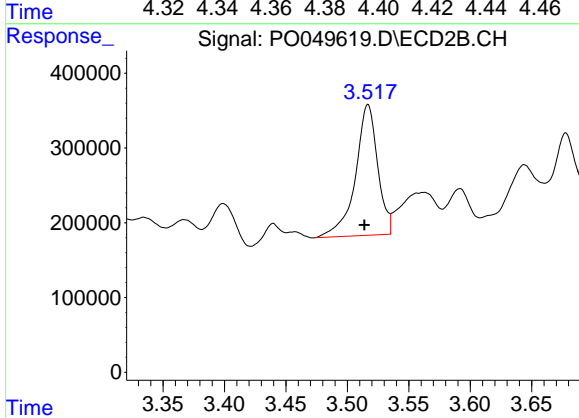




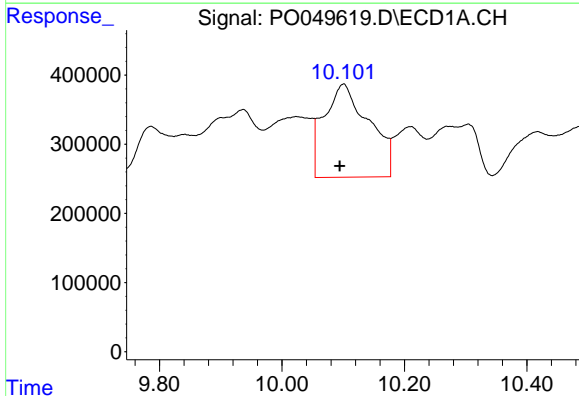
#1 Tetrachloro-m-xylene  
 R.T.: 4.390 min  
 Delta R.T.: 0.007 min  
 Response: 389308  
 Conc: 1.10 ng/ml m

**Instrument :**  
 ECD\_O  
**ClientSampled :**  
 CLEARWELL

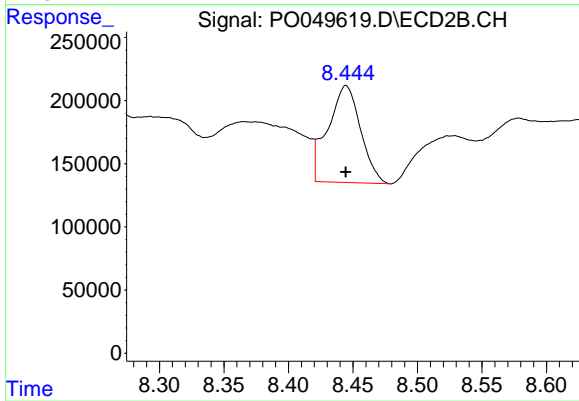
**Manual Integrations**  
**APPROVED**  
 Sohil  
 10/5/2018 11:05:57 AM



#1 Tetrachloro-m-xylene  
 R.T.: 3.517 min  
 Delta R.T.: 0.002 min  
 Response: 2204787  
 Conc: 6.48 ng/ml m



#2 Decachlorobiphenyl  
 R.T.: 10.100 min  
 Delta R.T.: 0.006 min  
 Response: 6855169  
 Conc: 14.47 ng/ml



#2 Decachlorobiphenyl  
 R.T.: 8.445 min  
 Delta R.T.: 0.000 min  
 Response: 1351196  
 Conc: 4.42 ng/ml