

Data Path : Z:\pestpcbsrv\HPCHEM1\ECD_0\Data\PO100418\
 Data File : PO049624.D
 Signal(s) : Signal #1: ECD1A.CH Signal #2: ECD2B.CH
 Acq On : 04 Oct 2018 20:11
 Operator : SM/SJ
 Sample : J5241-05
 Misc :
 ALS Vial : 24 Sample Multiplier: 1

Instrument :
 ECD_0
ClientSampleId :
 100218-SIDI-E-U-M

Manual Integrations
APPROVED
 Sohil
 10/5/2018 11:06:02 AM

Integration File signal 1: autoint1.e
 Integration File signal 2: autoint2.e
 Quant Time: Oct 05 01:03:50 2018
 Quant Method : Z:\pestpcbsrv\HPCHEM1\ECD_0\methods\PO100118.M
 Quant Title : GC EXTRACTABLES
 QLast Update : Tue Oct 02 05:32:25 2018
 Response via : Initial Calibration
 Integrator: ChemStation 6890 Scale Mode: Small noise peaks clipped

Volume Inj. : 2 µl
 Signal #1 Phase : ZB-MR1 Signal #2 Phase: ZB-MR2
 Signal #1 Info : 30Mx0.32mmx 0.50µ Signal #2 Info : 30M x 0.32mm x 0.25µm

Compound	RT#1	RT#2	Resp#1	Resp#2	ng/ml	ng/ml

System Monitoring Compounds						
1) SA Tetrachlo...	4.386	3.516	4407699	3720367	12.482m	10.938
2) SA Decachlor...	10.097	8.443	5264238	3347030	11.109	10.955

Target Compounds

(f)=RT Delta > 1/2 Window (#)=Amounts differ by > 25% (m)=manual int.

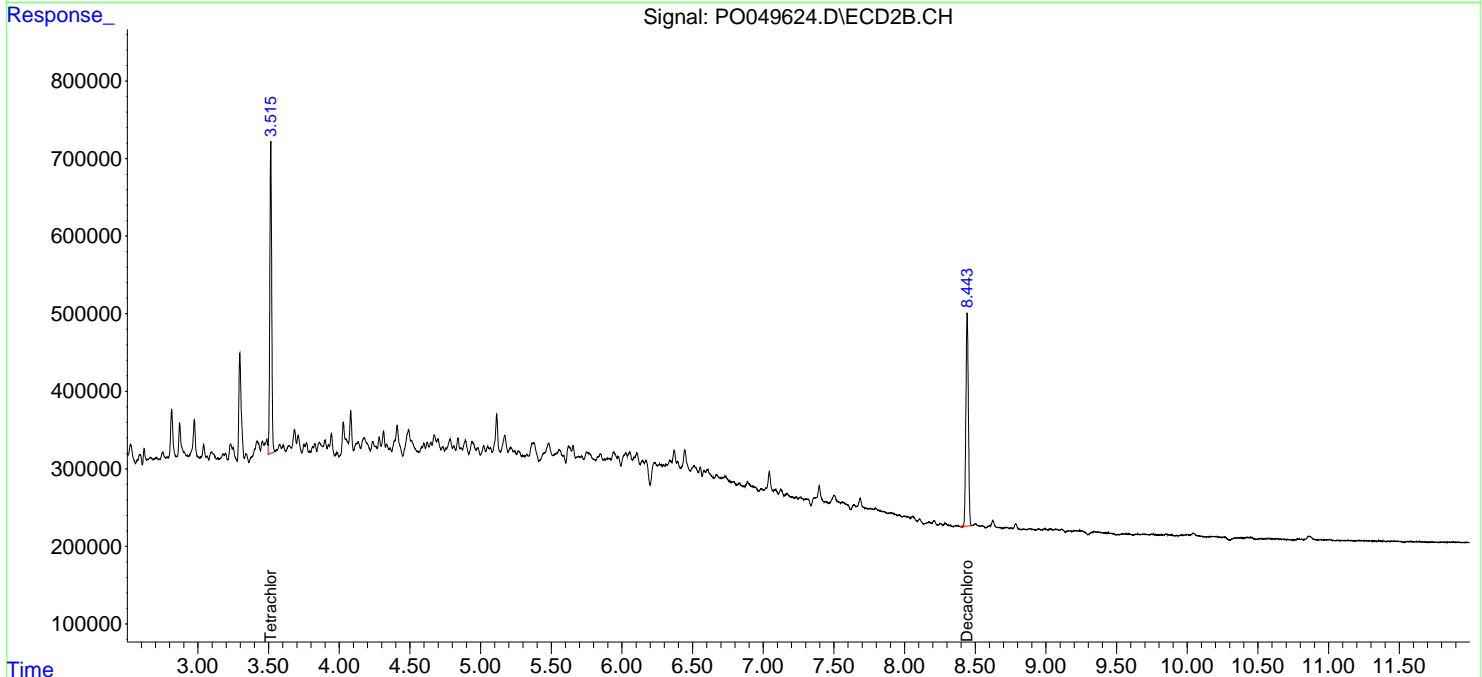
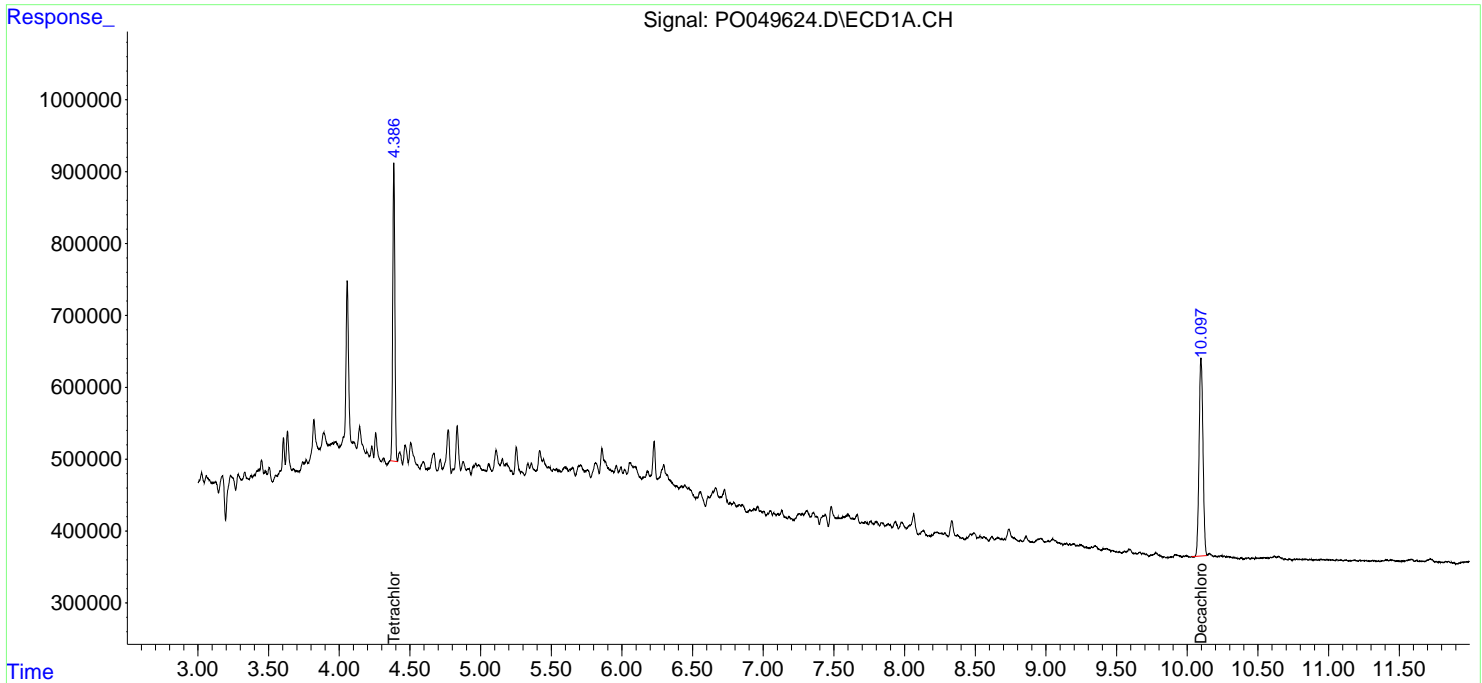
Data Path : Z:\pestpcbsrv\HPCHEM1\ECD_O\Data\PO100418\
 Data File : PO049624.D
 Signal(s) : Signal #1: ECD1A.CH Signal #2: ECD2B.CH
 Acq On : 04 Oct 2018 20:11
 Operator : SM/SJ
 Sample : J5241-05
 Misc :
 ALS Vial : 24 Sample Multiplier: 1

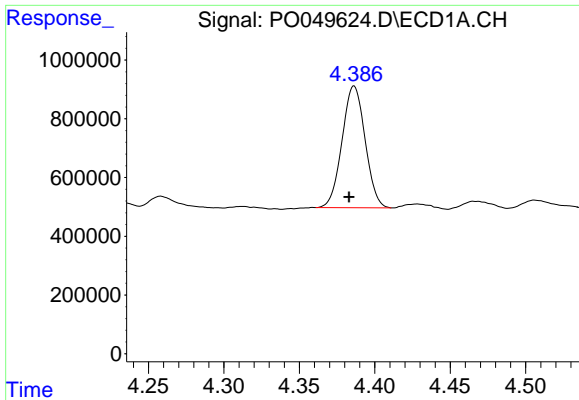
Instrument :
 ECD_O
ClientSampled :
 100218-SIDI-E-U-M

Manual Integrations
APPROVED
 Sohil
 10/5/2018 11:06:02 AM

Integration File signal 1: autoint1.e
 Integration File signal 2: autoint2.e
 Quant Time: Oct 05 01:03:50 2018
 Quant Method : Z:\pestpcbsrv\HPCHEM1\ECD_O\methods\PO100118.M
 Quant Title : GC EXTRACTABLES
 QLast Update : Tue Oct 02 05:32:25 2018
 Response via : Initial Calibration
 Integrator: ChemStation 6890 Scale Mode: Small noise peaks clipped

Volume Inj. : 2 µl
 Signal #1 Phase : ZB-MR1 Signal #2 Phase: ZB-MR2
 Signal #1 Info : 30Mx0.32mmx 0.50µ Signal #2 Info : 30M x 0.32mm x 0.25µm





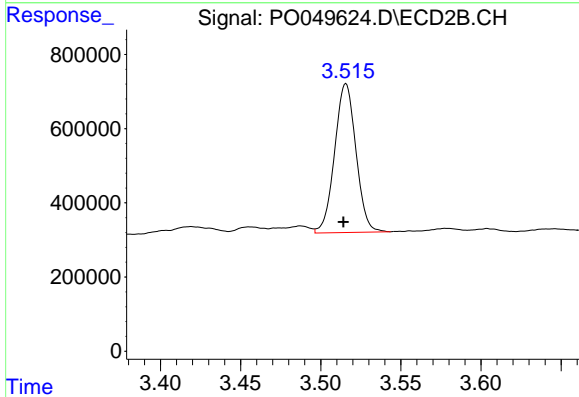
#1 Tetrachloro-m-xylene

R.T.: 4.386 min
 Delta R.T.: 0.003 min
 Response: 4407699
 Conc: 12.48 ng/ml m

Instrument :
 ECD_O
 ClientSampleId :
 100218-SIDI-E-U-M

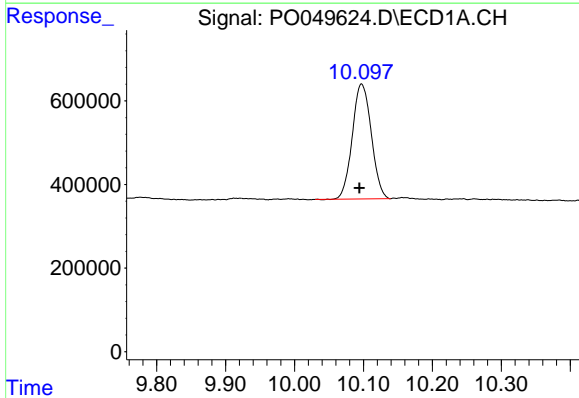
Manual Integrations
 APPROVED

Sohil
 10/5/2018 11:06:02 AM



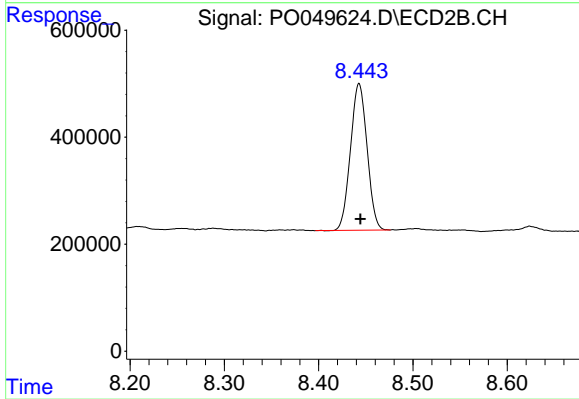
#1 Tetrachloro-m-xylene

R.T.: 3.516 min
 Delta R.T.: 0.002 min
 Response: 3720367
 Conc: 10.94 ng/ml



#2 Decachlorobiphenyl

R.T.: 10.097 min
 Delta R.T.: 0.003 min
 Response: 5264238
 Conc: 11.11 ng/ml



#2 Decachlorobiphenyl

R.T.: 8.443 min
 Delta R.T.: -0.002 min
 Response: 3347030
 Conc: 10.95 ng/ml