

Data Path : Z:\pestpcbsrv\HPCHEM1\ECD_0\Data\PO100418\
 Data File : PO049637.D
 Signal(s) : Signal #1: ECD1A.CH Signal #2: ECD2B.CH
 Acq On : 04 Oct 2018 23:39
 Operator : SM/SJ
 Sample : AR1660CCC500
 Misc :
 ALS Vial : 3 Sample Multiplier: 1

Instrument :
 ECD_0
ClientSampleId :
 AR1660CCC500

Manual Integrations
APPROVED
 Sohil
 10/5/2018 11:06:46 AM

Integration File signal 1: autoint1.e
 Integration File signal 2: autoint2.e
 Quant Time: Oct 05 01:16:35 2018
 Quant Method : Z:\pestpcbsrv\HPCHEM1\ECD_0\methods\PO100118.M
 Quant Title : GC EXTRACTABLES
 QLast Update : Tue Oct 02 05:32:25 2018
 Response via : Initial Calibration
 Integrator: ChemStation 6890 Scale Mode: Small noise peaks clipped

Volume Inj. : 2 µl
 Signal #1 Phase : ZB-MR1 Signal #2 Phase: ZB-MR2
 Signal #1 Info : 30Mx0.32mmx 0.50µ Signal #2 Info : 30M x 0.32mm x 0.25µm

Compound	RT#1	RT#2	Resp#1	Resp#2	ng/ml	ng/ml

System Monitoring Compounds						
1) SA Tetrachlo...	4.386	3.515	17738070	15095703	50.232	44.383
2) SA Decachlor...	10.098	8.442	23488731	15478035	49.569	50.659
Target Compounds						
3) L1 AR-1016-1	5.559	4.582	7977446	6815440	558.339	508.018
4) L1 AR-1016-2	5.581	4.600	11124482	9218419	555.087	508.264
5) L1 AR-1016-3	5.643	4.773	6940583	5276249	558.277	488.552
6) L1 AR-1016-4	5.742	4.815	5938571	3887379	585.821	491.826
7) L1 AR-1016-5	6.036	5.025	5777057	5401975	597.823m	499.772m
31) L7 AR-1260-1	7.161	6.046	12001264	11249631	567.409	548.017
32) L7 AR-1260-2	7.419	6.233	14749377	14934717	548.174	560.980
33) L7 AR-1260-3	7.777	6.384	11112070	13314866	562.437	561.775
34) L7 AR-1260-4	8.004	6.852	11474492	10523912	583.390	583.388
35) L7 AR-1260-5	8.321	7.093	25669586	27412082	571.837	586.673

(f)=RT Delta > 1/2 Window (#)=Amounts differ by > 25% (m)=manual int.

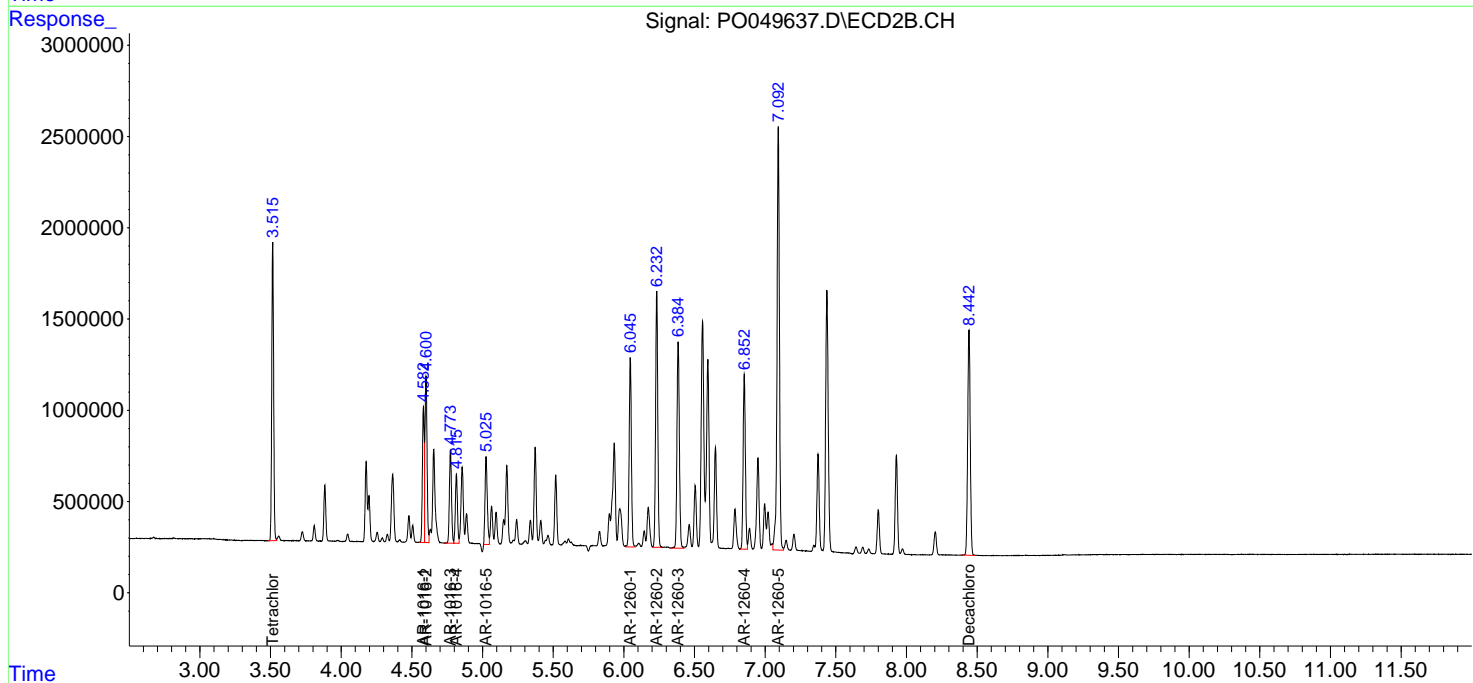
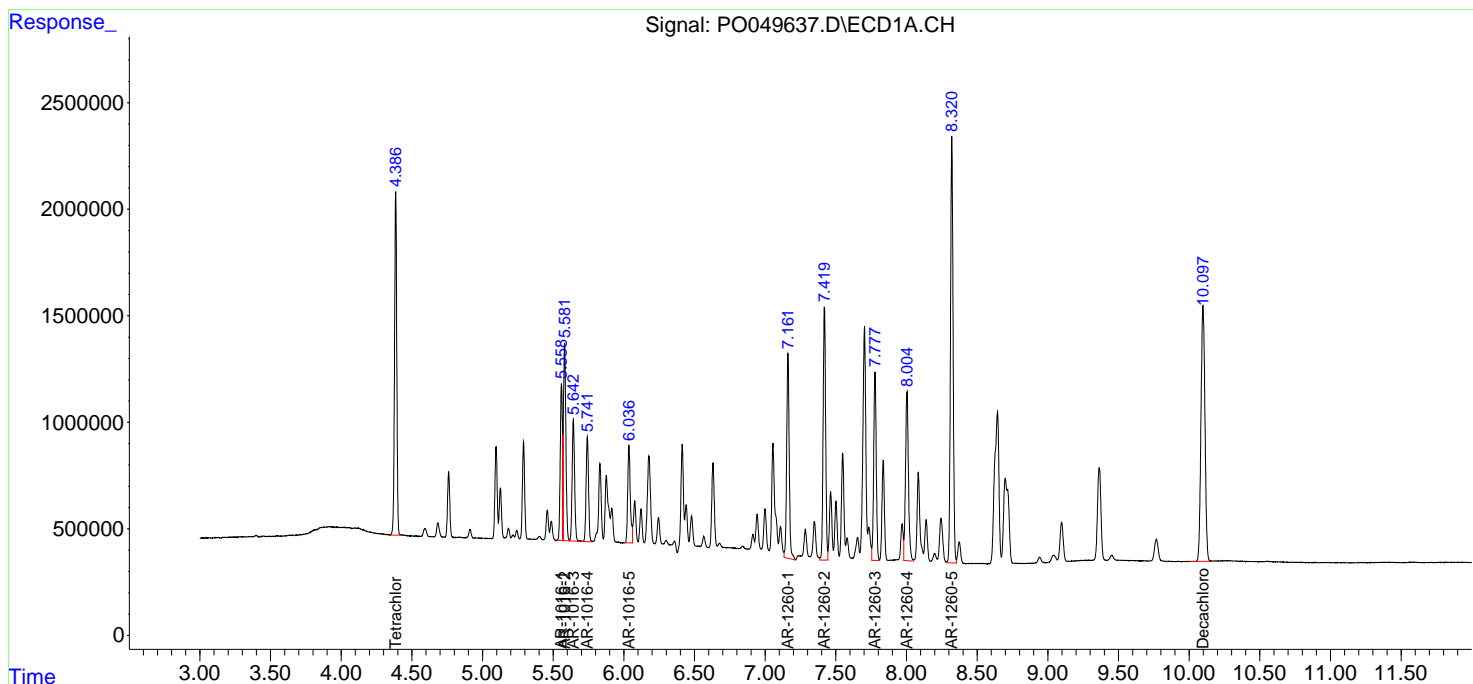
Data Path : Z:\pestpcbsrv\HPCHEM1\ECD_O\Data\PO100418\
 Data File : P0049637.D
 Signal(s) : Signal #1: ECD1A.CH Signal #2: ECD2B.CH
 Acq On : 04 Oct 2018 23:39
 Operator : SM/SJ
 Sample : AR1660CCC500
 Misc :
 ALS Vial : 3 Sample Multiplier: 1

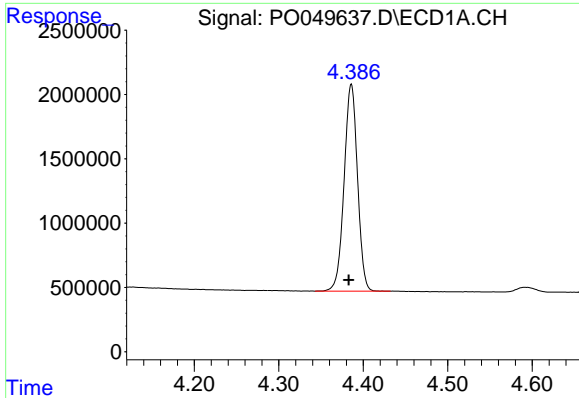
Instrument :
 ECD_O
Client Sampled :
 AR1660CCC500

Manual Integrations
APPROVED
 Sohil
 10/5/2018 11:06:46 AM

Integration File signal 1: autoint1.e
 Integration File signal 2: autoint2.e
 Quant Time: Oct 05 01:16:35 2018
 Quant Method : Z:\pestpcbsrv\HPCHEM1\ECD_O\methods\PO100118.M
 Quant Title : GC EXTRACTABLES
 QLast Update : Tue Oct 02 05:32:25 2018
 Response via : Initial Calibration
 Integrator: ChemStation 6890 Scale Mode: Small noise peaks clipped

Volume Inj. : 2 µl
 Signal #1 Phase : ZB-MR1 Signal #2 Phase: ZB-MR2
 Signal #1 Info : 30Mx0.32mmx 0.50µ Signal #2 Info : 30M x 0.32mm x 0.25µm

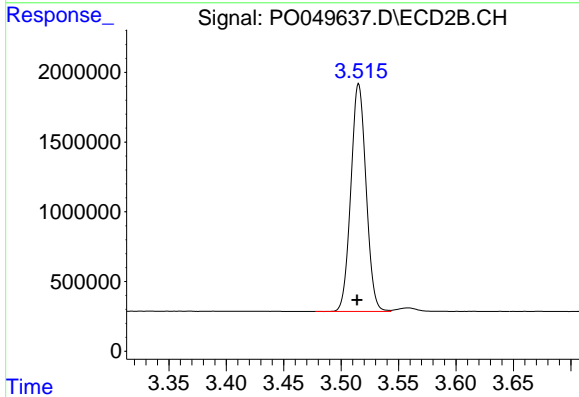




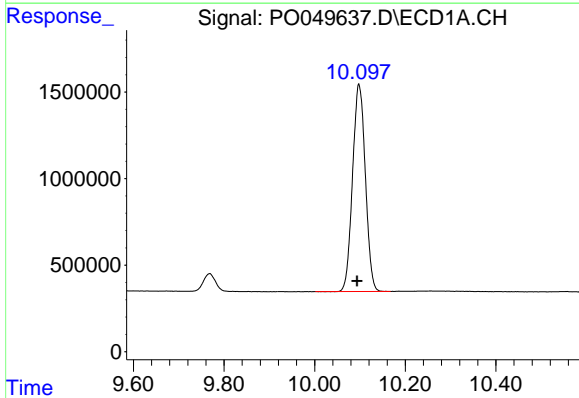
#1 Tetrachloro-m-xylene
 R.T.: 4.386 min
 Delta R.T.: 0.003 min
 Response: 17738070
 Conc: 50.23 ng/ml

Instrument :
 ECD_O
ClientSampled :
 AR1660CCC500

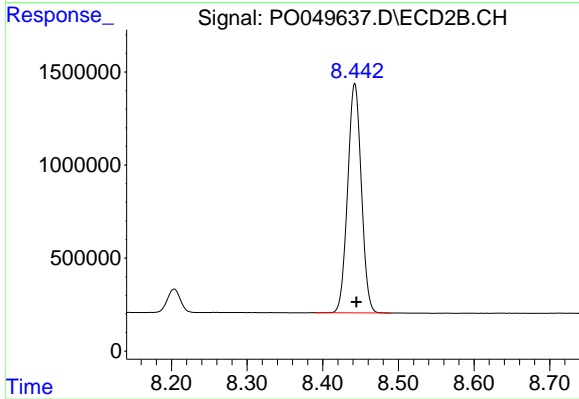
Manual Integrations
APPROVED
 Sohil
 10/5/2018 11:06:46 AM



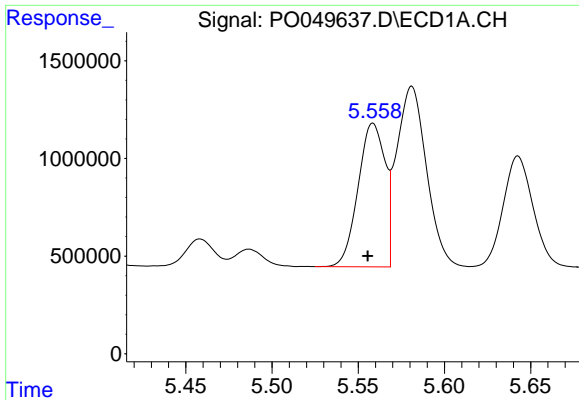
#1 Tetrachloro-m-xylene
 R.T.: 3.515 min
 Delta R.T.: 0.001 min
 Response: 15095703
 Conc: 44.38 ng/ml



#2 Decachlorobiphenyl
 R.T.: 10.098 min
 Delta R.T.: 0.004 min
 Response: 23488731
 Conc: 49.57 ng/ml



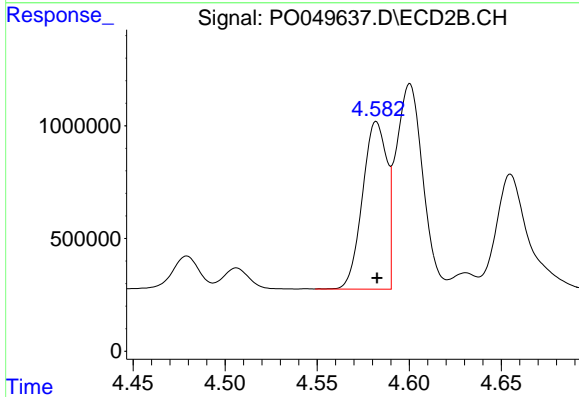
#2 Decachlorobiphenyl
 R.T.: 8.442 min
 Delta R.T.: -0.002 min
 Response: 15478035
 Conc: 50.66 ng/ml



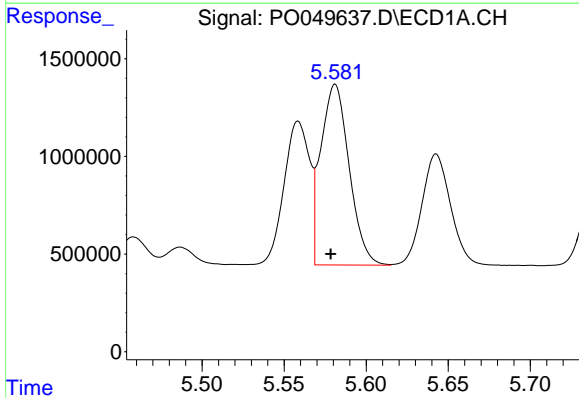
#3 AR-1016-1
 R.T.: 5.559 min
 Delta R.T.: 0.003 min
 Response: 7977446
 Conc: 558.34 ng/ml

Instrument :
 ECD_O
ClientSampled :
 AR1660CCC500

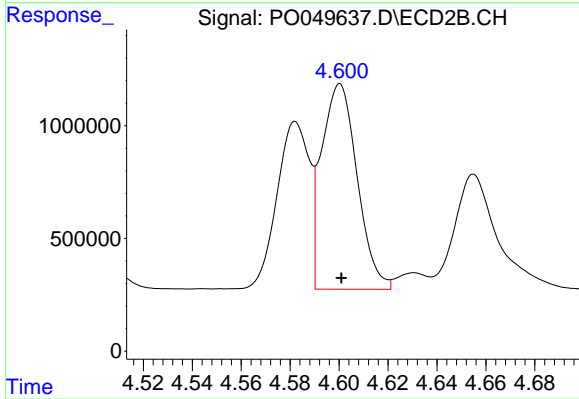
Manual Integrations
APPROVED
 Sohil
 10/5/2018 11:06:46 AM



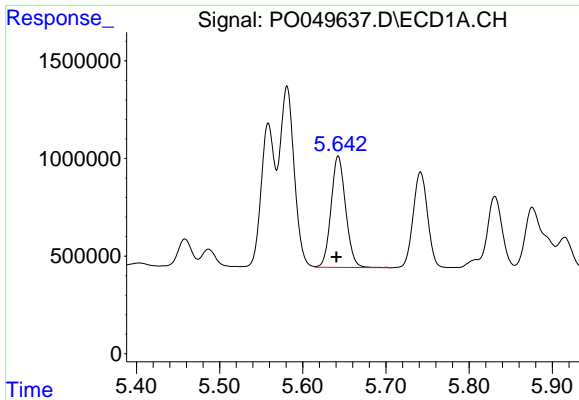
#3 AR-1016-1
 R.T.: 4.582 min
 Delta R.T.: 0.000 min
 Response: 6815440
 Conc: 508.02 ng/ml



#4 AR-1016-2
 R.T.: 5.581 min
 Delta R.T.: 0.003 min
 Response: 11124482
 Conc: 555.09 ng/ml



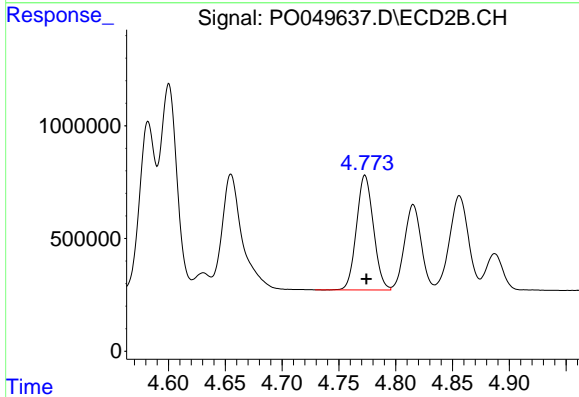
#4 AR-1016-2
 R.T.: 4.600 min
 Delta R.T.: 0.000 min
 Response: 9218419
 Conc: 508.26 ng/ml



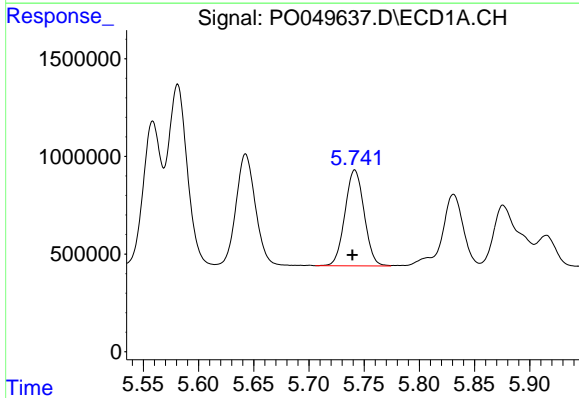
#5 AR-1016-3
 R.T.: 5.643 min
 Delta R.T.: 0.002 min
 Response: 6940583
 Conc: 558.28 ng/ml

Instrument :
 ECD_O
ClientSampled :
 AR1660CCC500

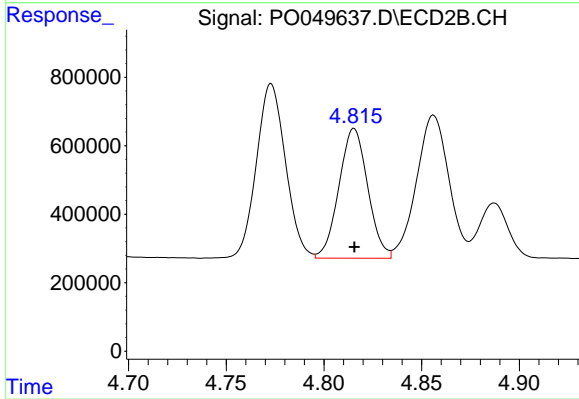
Manual Integrations
APPROVED
 Sohil
 10/5/2018 11:06:46 AM



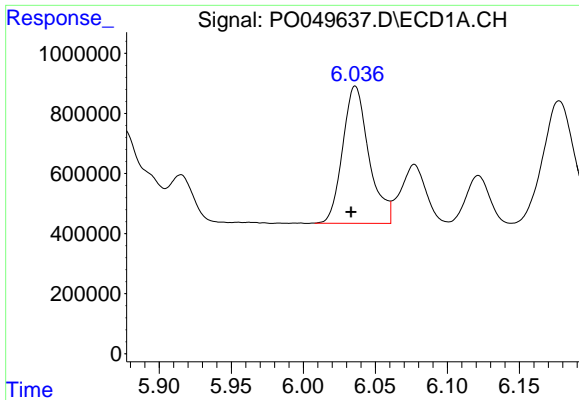
#5 AR-1016-3
 R.T.: 4.773 min
 Delta R.T.: -0.001 min
 Response: 5276249
 Conc: 488.55 ng/ml



#6 AR-1016-4
 R.T.: 5.742 min
 Delta R.T.: 0.002 min
 Response: 5938571
 Conc: 585.82 ng/ml



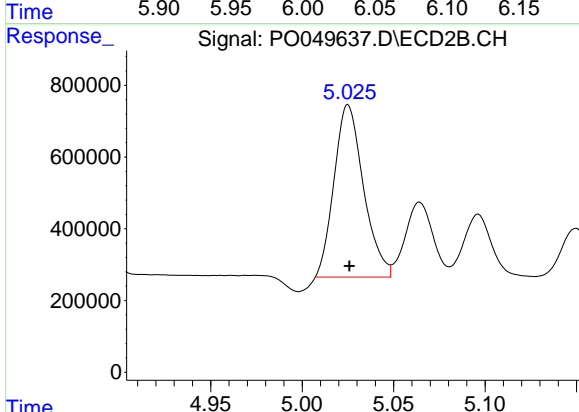
#6 AR-1016-4
 R.T.: 4.815 min
 Delta R.T.: 0.000 min
 Response: 3887379
 Conc: 491.83 ng/ml



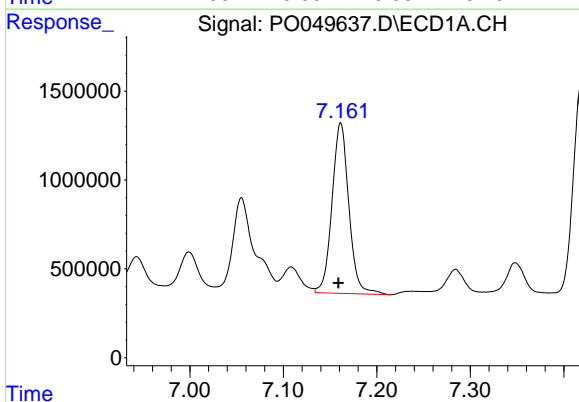
#7 AR-1016-5
 R.T.: 6.036 min
 Delta R.T.: 0.003 min
 Response: 5777057
 Conc: 597.82 ng/ml m

Instrument :
 ECD_O
ClientSampled :
 AR1660CCC500

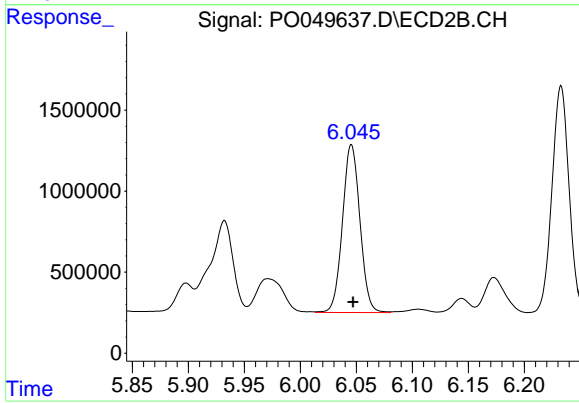
Manual Integrations
APPROVED
 Sohil
 10/5/2018 11:06:46 AM



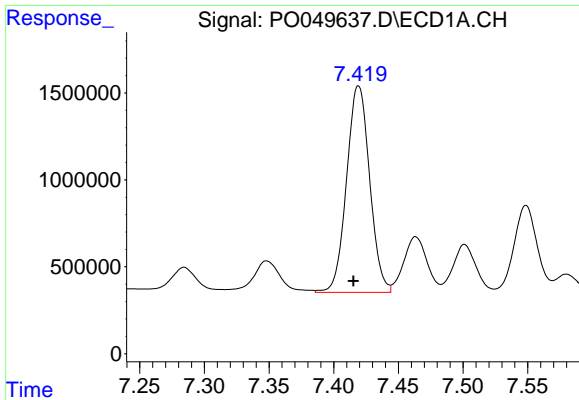
#7 AR-1016-5
 R.T.: 5.025 min
 Delta R.T.: -0.001 min
 Response: 5401975
 Conc: 499.77 ng/ml m



#31 AR-1260-1
 R.T.: 7.161 min
 Delta R.T.: 0.003 min
 Response: 12001264
 Conc: 567.41 ng/ml



#31 AR-1260-1
 R.T.: 6.046 min
 Delta R.T.: -0.002 min
 Response: 11249631
 Conc: 548.02 ng/ml

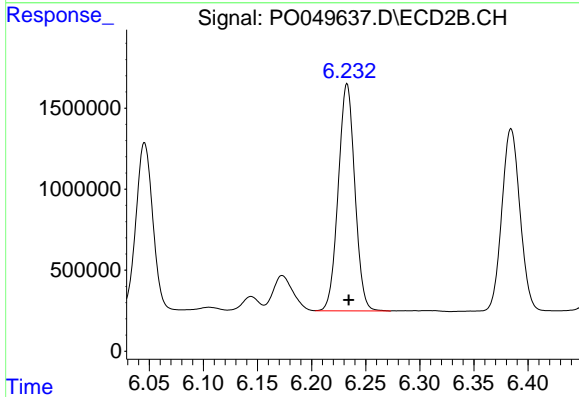


#32 AR-1260-2

R.T.: 7.419 min
 Delta R.T.: 0.004 min
 Response: 14749377
 Conc: 548.17 ng/ml

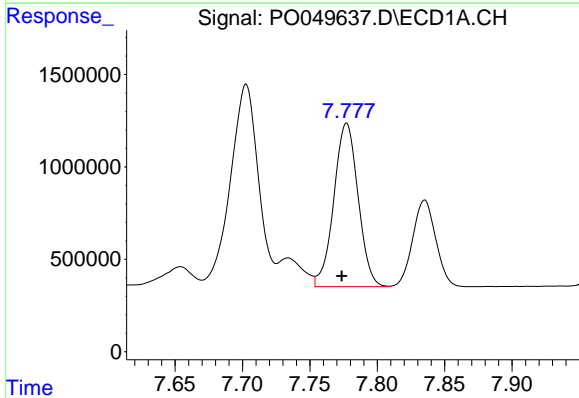
Instrument :
 ECD_O
 ClientSampleId :
 AR1660CCC500

Manual Integrations
 APPROVED
 Sohil
 10/5/2018 11:06:46 AM



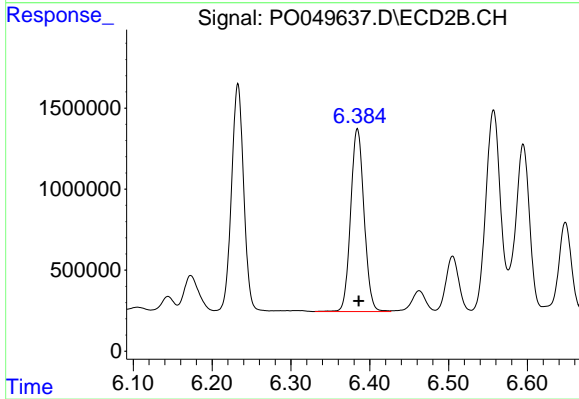
#32 AR-1260-2

R.T.: 6.233 min
 Delta R.T.: -0.002 min
 Response: 14934717
 Conc: 560.98 ng/ml



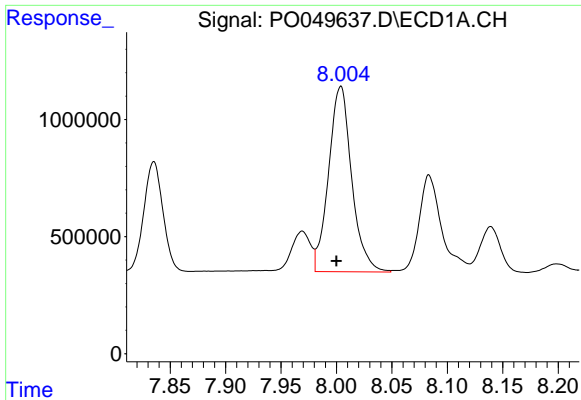
#33 AR-1260-3

R.T.: 7.777 min
 Delta R.T.: 0.004 min
 Response: 11112070
 Conc: 562.44 ng/ml



#33 AR-1260-3

R.T.: 6.384 min
 Delta R.T.: -0.002 min
 Response: 13314866
 Conc: 561.78 ng/ml



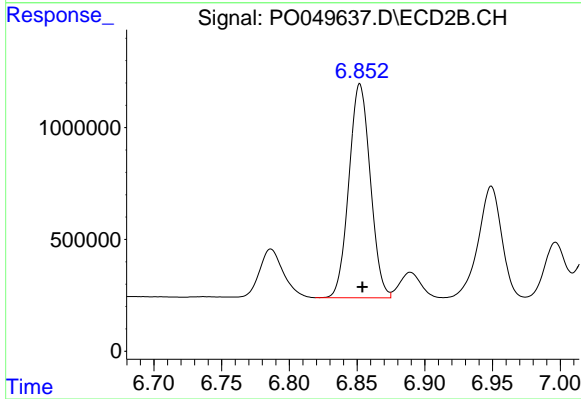
#34 AR-1260-4

R.T.: 8.004 min
 Delta R.T.: 0.004 min
 Response: 11474492
 Conc: 583.39 ng/ml

Instrument :
 ECD_O
 ClientSampleId :
 AR1660CCC500

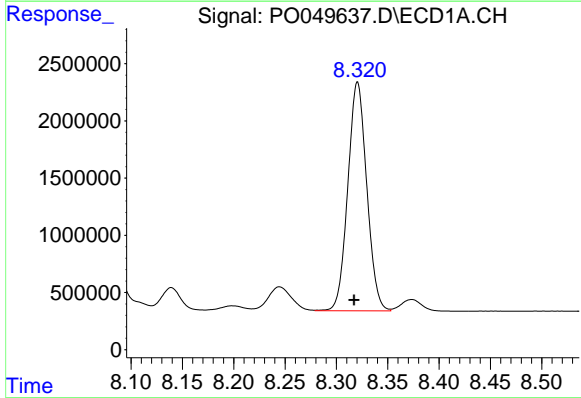
Manual Integrations
 APPROVED

Sohil
 10/5/2018 11:06:46 AM



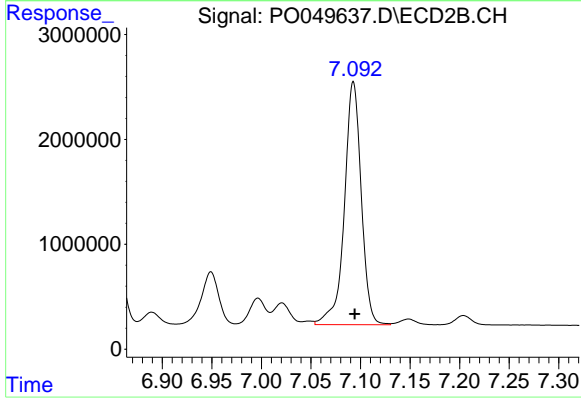
#34 AR-1260-4

R.T.: 6.852 min
 Delta R.T.: -0.002 min
 Response: 10523912
 Conc: 583.39 ng/ml



#35 AR-1260-5

R.T.: 8.321 min
 Delta R.T.: 0.003 min
 Response: 25669586
 Conc: 571.84 ng/ml



#35 AR-1260-5

R.T.: 7.093 min
 Delta R.T.: -0.001 min
 Response: 27412082
 Conc: 586.67 ng/ml