

Data Path : Z:\pestpcbsrv\HPCHEM1\ECD\_0\Data\PO100418\  
 Data File : PO049657.D  
 Signal(s) : Signal #1: ECD1A.CH Signal #2: ECD2B.CH  
 Acq On : 05 Oct 2018 5:30  
 Operator : SM/SJ  
 Sample : AR1660CCC500  
 Misc :  
 ALS Vial : 100 Sample Multiplier: 1

**Instrument :**  
 ECD\_0  
**ClientSampleId :**  
 AR1660CCC500

**Manual Integrations**  
**APPROVED**  
 \_\_\_\_\_  
 Sohil

10/5/2018 11:06:57 AM

Integration File signal 1: autoint1.e  
 Integration File signal 2: autoint2.e  
 Quant Time: Oct 05 07:12:20 2018  
 Quant Method : Z:\pestpcbsrv\HPCHEM1\ECD\_0\methods\PO100118.M  
 Quant Title : GC EXTRACTABLES  
 QLast Update : Tue Oct 02 05:32:25 2018  
 Response via : Initial Calibration  
 Integrator: ChemStation 6890 Scale Mode: Small noise peaks clipped

Volume Inj. : 2 µl  
 Signal #1 Phase : ZB-MR1 Signal #2 Phase: ZB-MR2  
 Signal #1 Info : 30Mx0.32mmx 0.50µ Signal #2 Info : 30M x 0.32mm x 0.25µm

Compound	RT#1	RT#2	Resp#1	Resp#2	ng/ml	ng/ml
-----						
System Monitoring Compounds						
1) SA Tetrachlo...	4.386	3.515	17581522	15303720	49.788	44.995
2) SA Decachlor...	10.095	8.441	16410583	11872866	34.632	38.860
Target Compounds						
3) L1 AR-1016-1	5.558	4.582	7291108	6478007	510.303	482.866
4) L1 AR-1016-2	5.581	4.600	10412106	8834656	519.541	487.105
5) L1 AR-1016-3	5.642	4.773	6305696	4930624	507.209	456.549
6) L1 AR-1016-4	5.742	4.814	5265578	3643206	519.433	460.934
7) L1 AR-1016-5	6.035	5.024	4862821	5040782	503.216	466.356m
31) L7 AR-1260-1	7.161	6.045	8907017	9488186	421.116	462.209
32) L7 AR-1260-2	7.418	6.232	11678671	11991401	434.048	450.423
33) L7 AR-1260-3	7.776	6.383	9298480	10339273	470.642	436.230
34) L7 AR-1260-4	8.002	6.851	8798071	7838731	447.314	434.536
35) L7 AR-1260-5	8.319	7.092	18267887	20158850	406.951	431.439
-----						

(f)=RT Delta > 1/2 Window (#)=Amounts differ by > 25% (m)=manual int.

Data Path : Z:\pestpcbsrv\HPCHEM1\ECD\_O\Data\PO100418\  
 Data File : PO049657.D  
 Signal(s) : Signal #1: ECD1A.CH Signal #2: ECD2B.CH  
 Acq On : 05 Oct 2018 5:30  
 Operator : SM/SJ  
 Sample : AR1660CCC500  
 Misc :  
 ALS Vial : 100 Sample Multiplier: 1

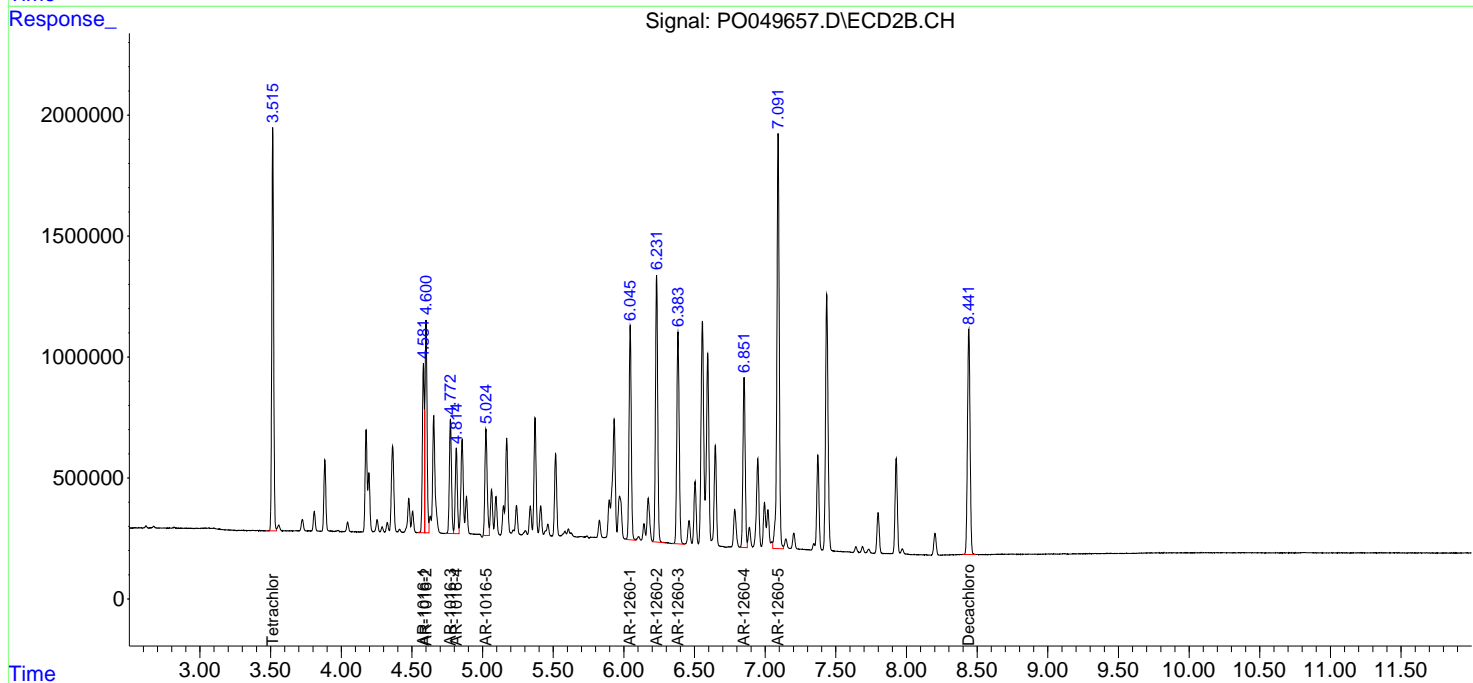
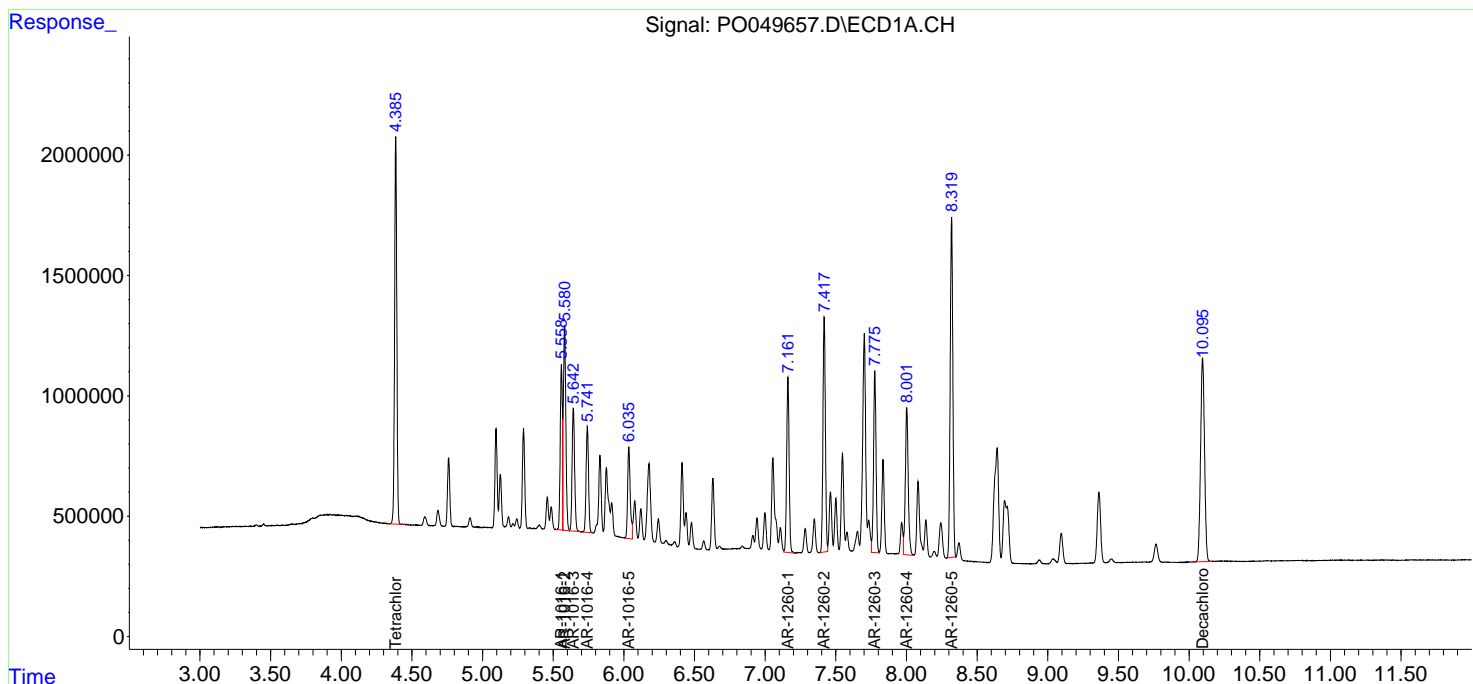
Instrument :  
 ECD\_O  
 Client Sampled :  
 AR1660CCC500

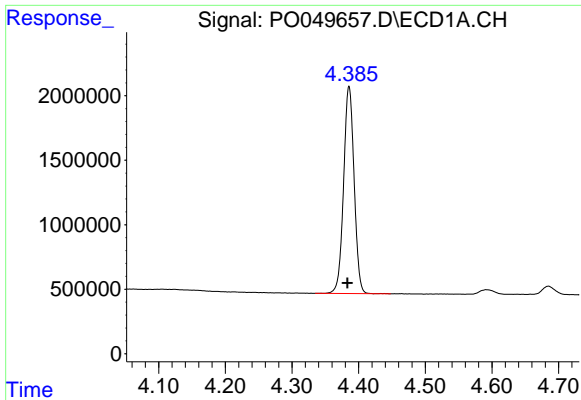
Manual Integrations  
 APPROVED  
 Sohil

10/5/2018 11:06:57 AM

Integration File signal 1: autoint1.e  
 Integration File signal 2: autoint2.e  
 Quant Time: Oct 05 07:12:20 2018  
 Quant Method : Z:\pestpcbsrv\HPCHEM1\ECD\_O\methods\PO100118.M  
 Quant Title : GC EXTRACTABLES  
 QLast Update : Tue Oct 02 05:32:25 2018  
 Response via : Initial Calibration  
 Integrator: ChemStation 6890 Scale Mode: Small noise peaks clipped

Volume Inj. : 2 µl  
 Signal #1 Phase : ZB-MR1 Signal #2 Phase: ZB-MR2  
 Signal #1 Info : 30Mx0.32mmx 0.50µ Signal #2 Info : 30M x 0.32mm x 0.25µm





#1 Tetrachloro-m-xylene

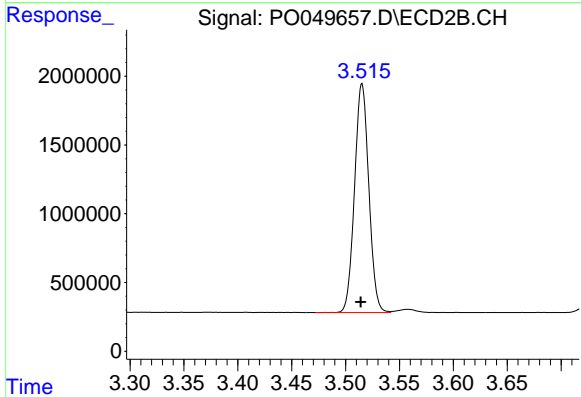
R.T.: 4.386 min  
 Delta R.T.: 0.003 min  
 Response: 17581522  
 Conc: 49.79 ng/ml

Instrument :  
 ECD\_O  
 ClientSampleId :  
 AR1660CCC500

Manual Integrations  
 APPROVED

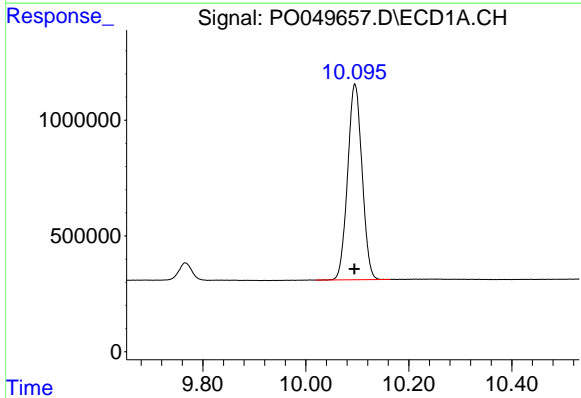
Sohil

10/5/2018 11:06:57 AM



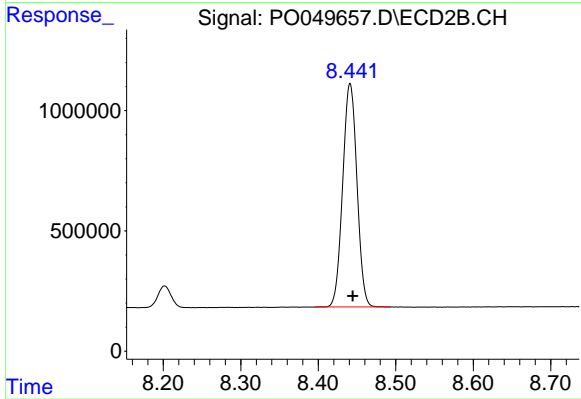
#1 Tetrachloro-m-xylene

R.T.: 3.515 min  
 Delta R.T.: 0.001 min  
 Response: 15303720  
 Conc: 44.99 ng/ml



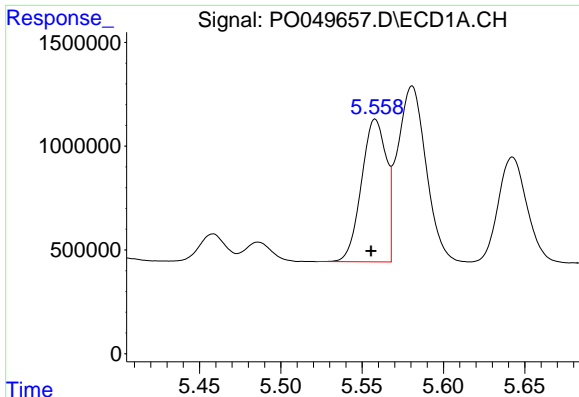
#2 Decachlorobiphenyl

R.T.: 10.095 min  
 Delta R.T.: 0.001 min  
 Response: 16410583  
 Conc: 34.63 ng/ml



#2 Decachlorobiphenyl

R.T.: 8.441 min  
 Delta R.T.: -0.003 min  
 Response: 11872866  
 Conc: 38.86 ng/ml



#3 AR-1016-1

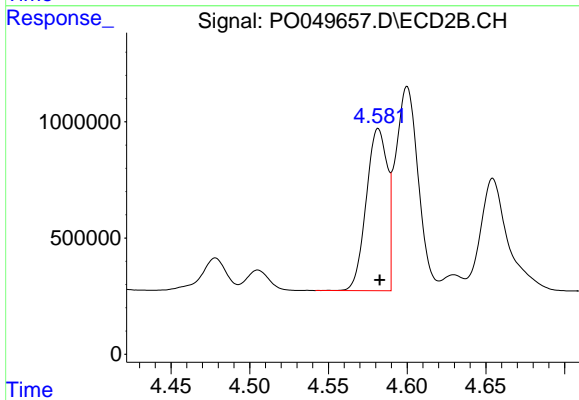
R.T.: 5.558 min  
 Delta R.T.: 0.003 min  
 Response: 7291108  
 Conc: 510.30 ng/ml

**Instrument :**  
 ECD\_O  
**ClientSampled :**  
 AR1660CCC500

**Manual Integrations**  
**APPROVED**

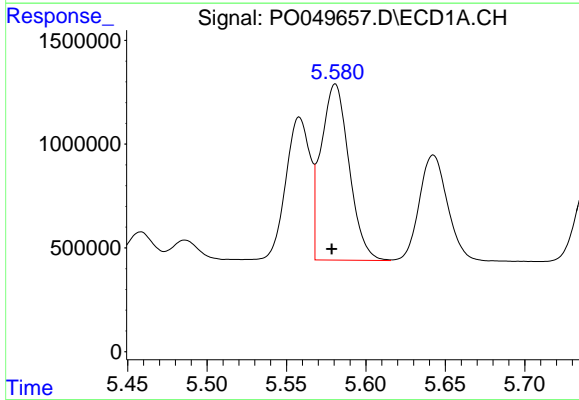
Sohil

10/5/2018 11:06:57 AM



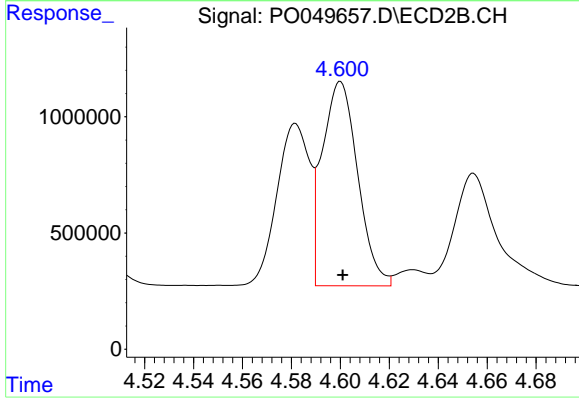
#3 AR-1016-1

R.T.: 4.582 min  
 Delta R.T.: 0.000 min  
 Response: 6478007  
 Conc: 482.87 ng/ml



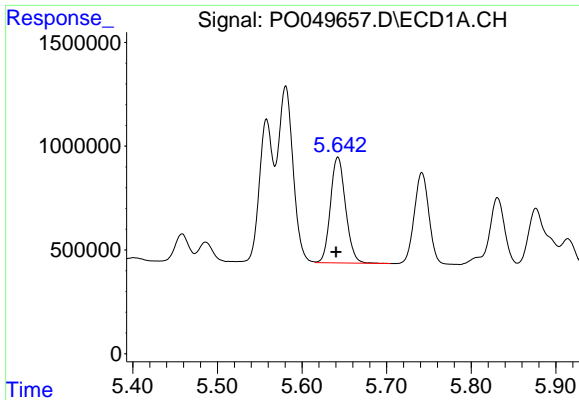
#4 AR-1016-2

R.T.: 5.581 min  
 Delta R.T.: 0.002 min  
 Response: 10412106  
 Conc: 519.54 ng/ml



#4 AR-1016-2

R.T.: 4.600 min  
 Delta R.T.: 0.000 min  
 Response: 8834656  
 Conc: 487.10 ng/ml



#5 AR-1016-3

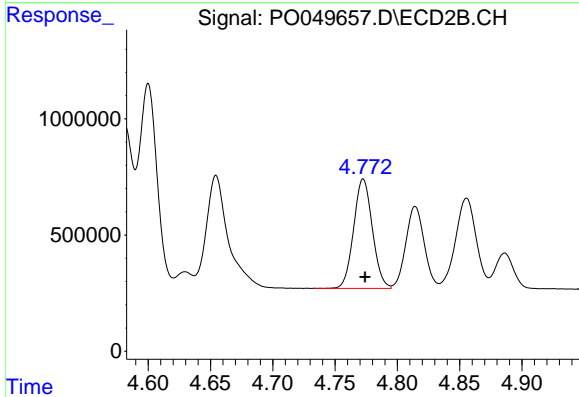
R.T.: 5.642 min  
 Delta R.T.: 0.002 min  
 Response: 6305696  
 Conc: 507.21 ng/ml

**Instrument :**  
 ECD\_O  
**ClientSampled :**  
 AR1660CCC500

**Manual Integrations**  
**APPROVED**

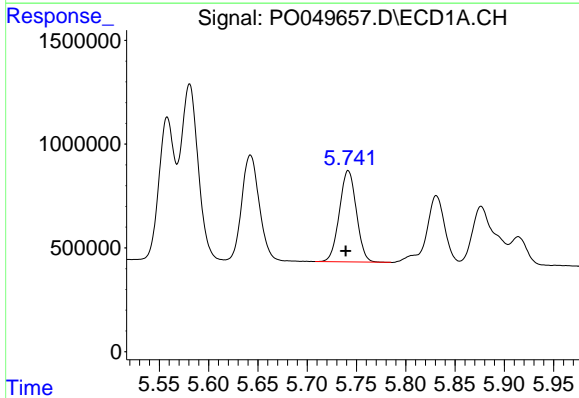
Sohil

10/5/2018 11:06:57 AM



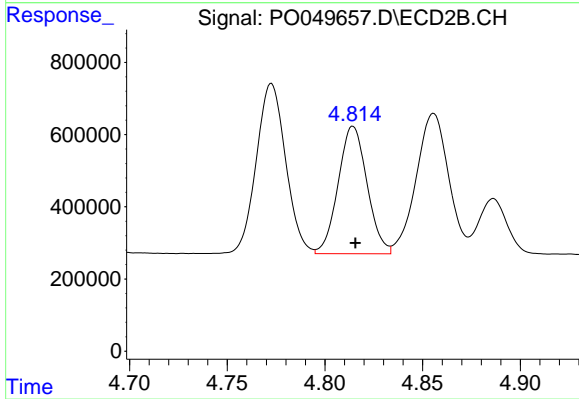
#5 AR-1016-3

R.T.: 4.773 min  
 Delta R.T.: -0.002 min  
 Response: 4930624  
 Conc: 456.55 ng/ml



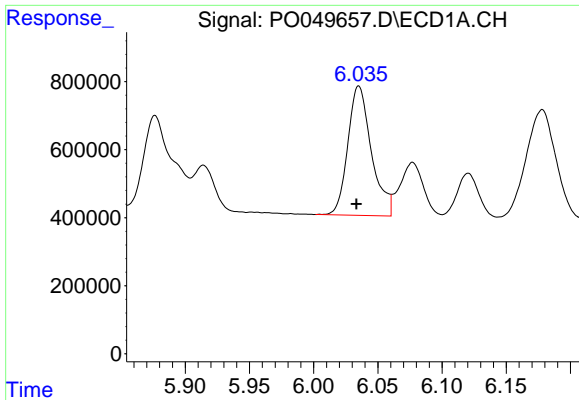
#6 AR-1016-4

R.T.: 5.742 min  
 Delta R.T.: 0.002 min  
 Response: 5265578  
 Conc: 519.43 ng/ml



#6 AR-1016-4

R.T.: 4.814 min  
 Delta R.T.: -0.001 min  
 Response: 3643206  
 Conc: 460.93 ng/ml



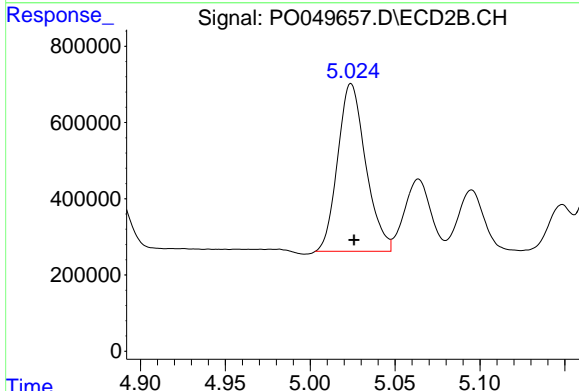
#7 AR-1016-5

R.T.: 6.035 min  
 Delta R.T.: 0.002 min  
 Response: 4862821  
 Conc: 503.22 ng/ml

Instrument :  
 ECD\_O  
 ClientSampleId :  
 AR1660CCC500

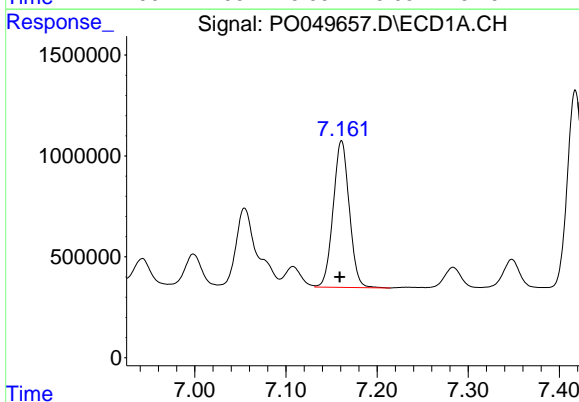
Manual Integrations  
 APPROVED  
 Sohil

10/5/2018 11:06:57 AM



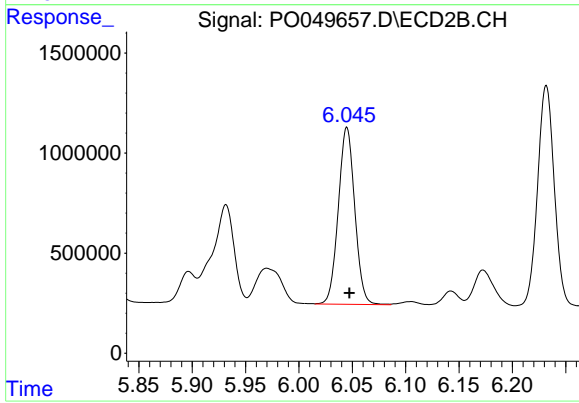
#7 AR-1016-5

R.T.: 5.024 min  
 Delta R.T.: -0.002 min  
 Response: 5040782  
 Conc: 466.36 ng/ml m



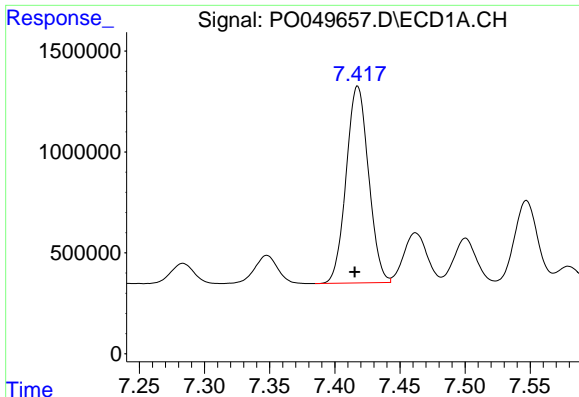
#31 AR-1260-1

R.T.: 7.161 min  
 Delta R.T.: 0.002 min  
 Response: 8907017  
 Conc: 421.12 ng/ml



#31 AR-1260-1

R.T.: 6.045 min  
 Delta R.T.: -0.002 min  
 Response: 9488186  
 Conc: 462.21 ng/ml



#32 AR-1260-2

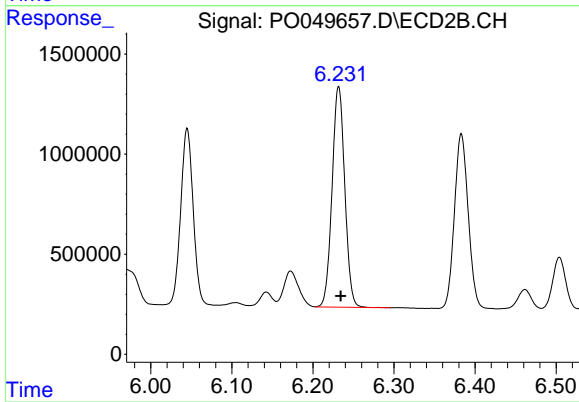
R.T.: 7.418 min  
 Delta R.T.: 0.002 min  
 Response: 11678671  
 Conc: 434.05 ng/ml

Instrument :  
 ECD\_O  
 ClientSampled :  
 AR1660CCC500

Manual Integrations  
 APPROVED

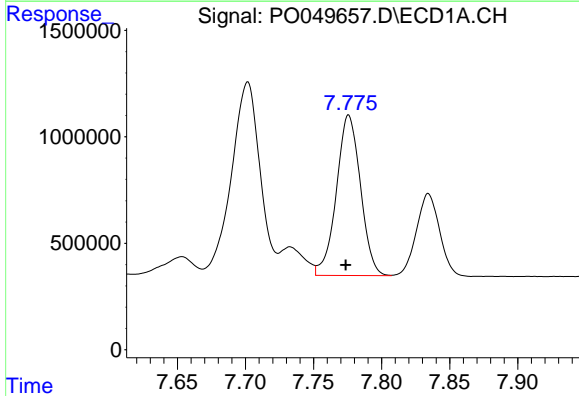
Sohil

10/5/2018 11:06:57 AM



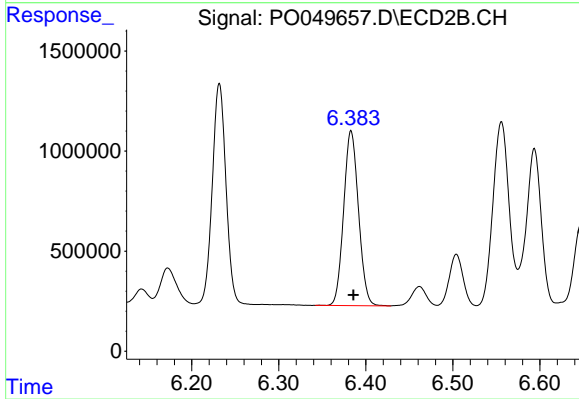
#32 AR-1260-2

R.T.: 6.232 min  
 Delta R.T.: -0.003 min  
 Response: 11991401  
 Conc: 450.42 ng/ml



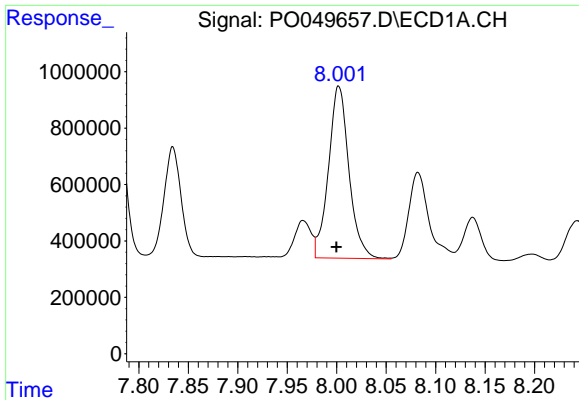
#33 AR-1260-3

R.T.: 7.776 min  
 Delta R.T.: 0.002 min  
 Response: 9298480  
 Conc: 470.64 ng/ml



#33 AR-1260-3

R.T.: 6.383 min  
 Delta R.T.: -0.003 min  
 Response: 10339273  
 Conc: 436.23 ng/ml

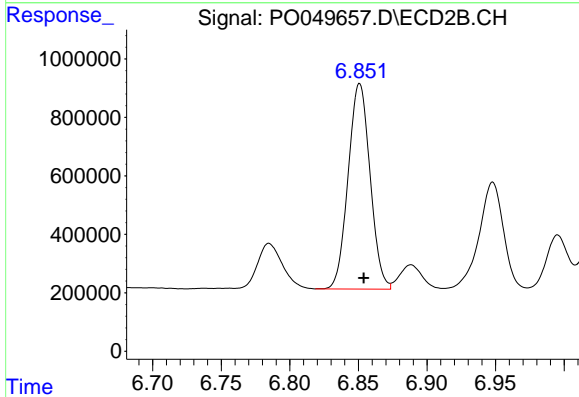


#34 AR-1260-4

R.T.: 8.002 min  
 Delta R.T.: 0.002 min  
 Response: 8798071  
 Conc: 447.31 ng/ml

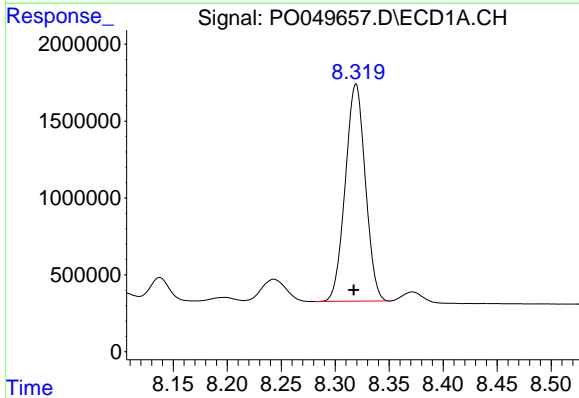
Instrument :  
 ECD\_O  
 ClientSampled :  
 AR1660CCC500

Manual Integrations  
 APPROVED  
 Sohil  
 10/5/2018 11:06:57 AM



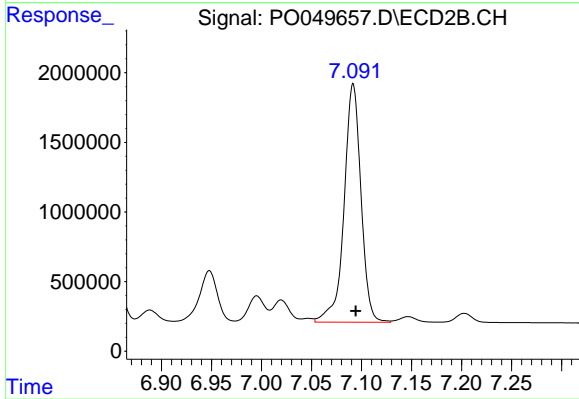
#34 AR-1260-4

R.T.: 6.851 min  
 Delta R.T.: -0.003 min  
 Response: 7838731  
 Conc: 434.54 ng/ml



#35 AR-1260-5

R.T.: 8.319 min  
 Delta R.T.: 0.002 min  
 Response: 18267887  
 Conc: 406.95 ng/ml



#35 AR-1260-5

R.T.: 7.092 min  
 Delta R.T.: -0.003 min  
 Response: 20158850  
 Conc: 431.44 ng/ml