

Data Path : Z:\pestpcbsrv\HPCHEM1\ECD\_0\Data\PO100421\  
 Data File : PO081746.D  
 Signal(s) : Signal #1: ECD1A.CH Signal #2: ECD2B.CH  
 Acq On : 04 Oct 2021 18:02  
 Operator : AJ\MA  
 Sample : AR1660CCC500  
 Misc :  
 ALS Vial : 3 Sample Multiplier: 1

Instrument :  
 ECD\_0  
 ClientSampleId :  
 AR1660CCC500

Integration File signal 1: autoint1.e  
 Integration File signal 2: autoint2.e  
 Quant Time: Oct 05 01:05:02 2021  
 Quant Method : Z:\pestpcbsrv\HPCHEM1\ECD\_0\methods\PO092321.M  
 Quant Title : GC EXTRACTABLES  
 QLast Update : Fri Sep 24 02:21:54 2021  
 Response via : Initial Calibration  
 Integrator: ChemStation 6890 Scale Mode: Small noise peaks clipped

Volume Inj. : 2 µl  
 Signal #1 Phase : ZB-MR2 Signal #2 Phase: ZB-MR2  
 Signal #1 Info : 30Mx0.32mmx 0.50µ Signal #2 Info : 30M x 0.32mm x 0.25µm

Compound	RT#1	RT#2	Resp#1	Resp#2	ng/ml	ng/ml
-----						
System Monitoring Compounds						
1) SA Tetrachlo...	4.867	3.983	4578249	1291505	51.340	48.476
2) SA Decachlor...	10.874	9.327	3733488	1130455	50.122	48.679
Target Compounds						
3) L1 AR-1016-1	6.194	5.250	1733076	453159	535.288	502.995
4) L1 AR-1016-2	6.218	5.270	2471818	682821	533.259	500.022
5) L1 AR-1016-3	6.284	5.464	1509882	360020	527.381	507.802
6) L1 AR-1016-4	6.391	5.516	1234508	312694	536.686	504.815
7) L1 AR-1016-5	6.707	5.747	1255497	374992	551.698	531.138
31) L7 AR-1260-1	7.886	6.851	2198023	676269	519.966	484.430
32) L7 AR-1260-2	8.153	7.050	2581017	812522	497.264	497.159
33) L7 AR-1260-3	8.518	7.207	1752008	744741	540.705	447.859
34) L7 AR-1260-4	8.749	7.692	2050792	564016	514.493	507.460
35) L7 AR-1260-5	9.072	7.942	3847238	1252818	519.326	507.295

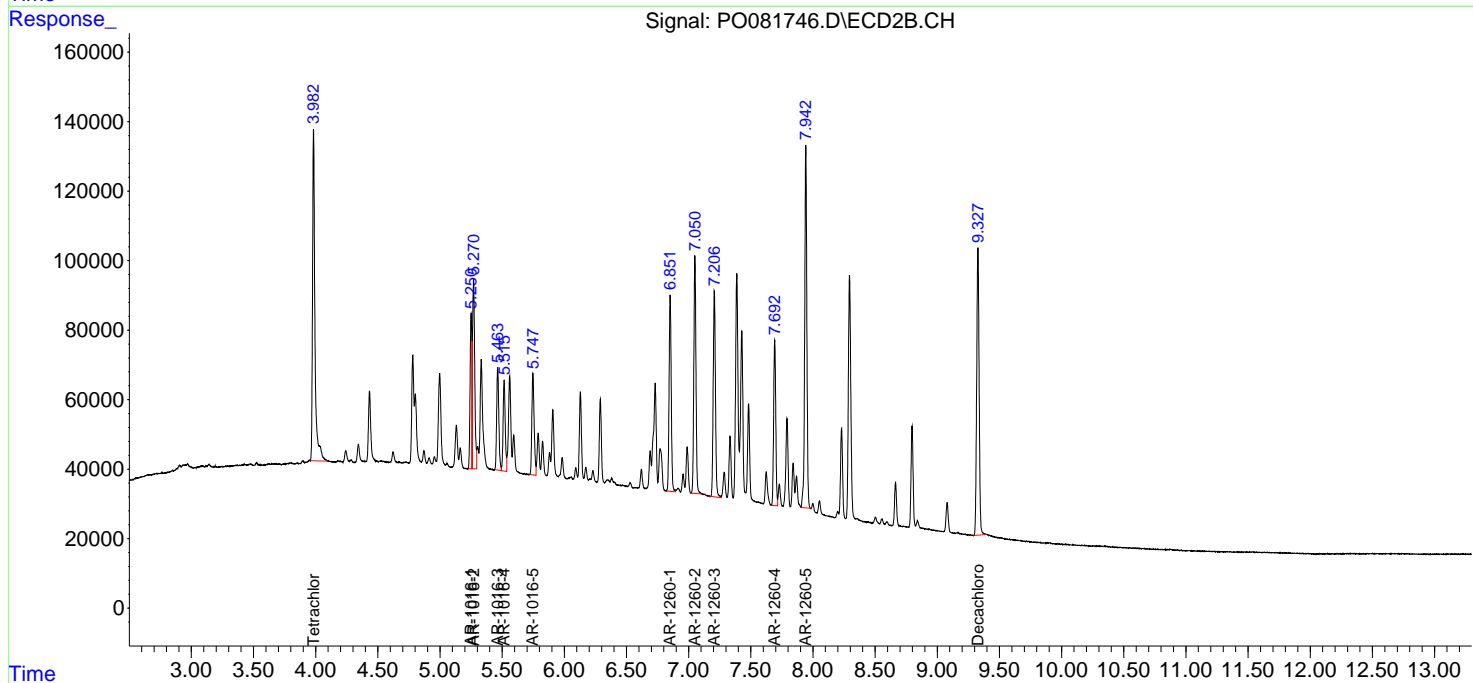
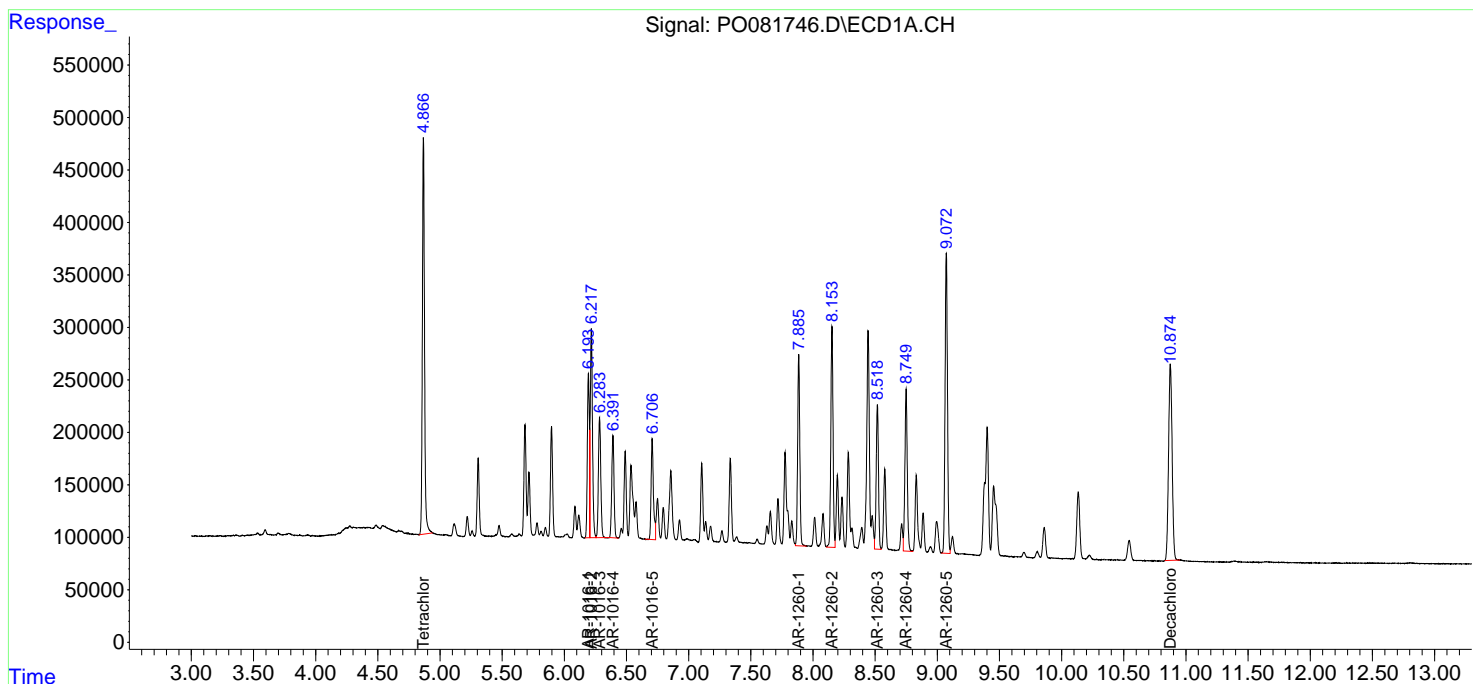
(f)=RT Delta > 1/2 Window (#)=Amounts differ by > 25% (m)=manual int.

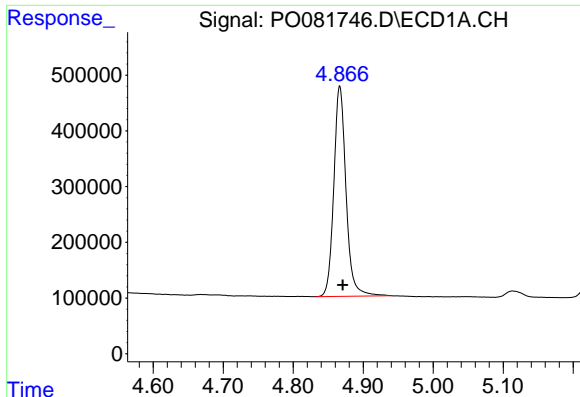
Data Path : Z:\pestpcbsrv\HPCHEM1\ECD\_0\Data\PO100421\  
 Data File : PO081746.D  
 Signal(s) : Signal #1: ECD1A.CH Signal #2: ECD2B.CH  
 Acq On : 04 Oct 2021 18:02  
 Operator : AJ\MA  
 Sample : AR1660CCC500  
 Misc :  
 ALS Vial : 3 Sample Multiplier: 1

Instrument :  
 ECD\_O  
 ClientSampled :  
 AR1660CCC500

Integration File signal 1: autoint1.e  
 Integration File signal 2: autoint2.e  
 Quant Time: Oct 05 01:05:02 2021  
 Quant Method : Z:\pestpcbsrv\HPCHEM1\ECD\_0\methods\PO092321.M  
 Quant Title : GC EXTRACTABLES  
 QLast Update : Fri Sep 24 02:21:54 2021  
 Response via : Initial Calibration  
 Integrator: ChemStation 6890 Scale Mode: Small noise peaks clipped

Volume Inj. : 2 µl  
 Signal #1 Phase : ZB-MR1 Signal #2 Phase: ZB-MR2  
 Signal #1 Info : 30Mx0.32mmx 0.50µ Signal #2 Info : 30M x 0.32mm x 0.25µm

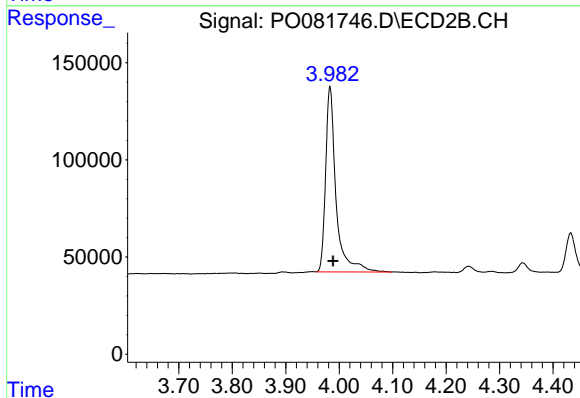




#1 Tetrachloro-m-xylene

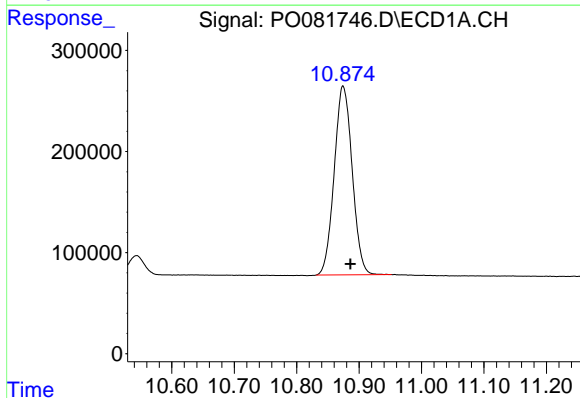
R.T.: 4.867 min  
 Delta R.T.: -0.004 min  
 Response: 4578249  
 Conc: 51.34 ng/ml

Instrument :  
 ECD\_O  
 ClientSampleId :  
 AR1660CCC500



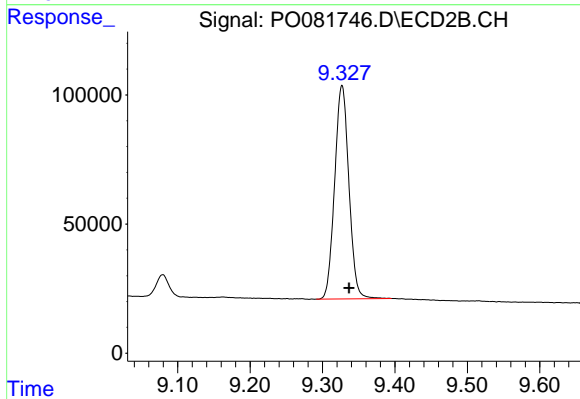
#1 Tetrachloro-m-xylene

R.T.: 3.983 min  
 Delta R.T.: -0.006 min  
 Response: 1291505  
 Conc: 48.48 ng/ml



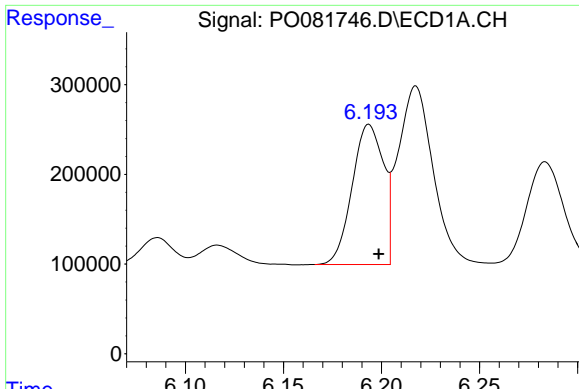
#2 Decachlorobiphenyl

R.T.: 10.874 min  
 Delta R.T.: -0.012 min  
 Response: 3733488  
 Conc: 50.12 ng/ml



#2 Decachlorobiphenyl

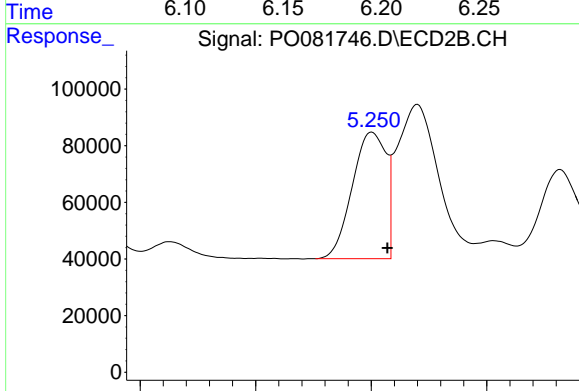
R.T.: 9.327 min  
 Delta R.T.: -0.010 min  
 Response: 1130455  
 Conc: 48.68 ng/ml



#3 AR-1016-1

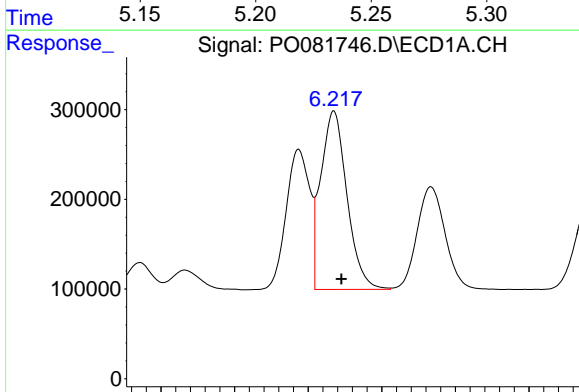
R.T.: 6.194 min  
 Delta R.T.: -0.005 min  
 Response: 1733076  
 Conc: 535.29 ng/ml

Instrument :  
 ECD\_O  
 ClientSampled :  
 AR1660CCC500



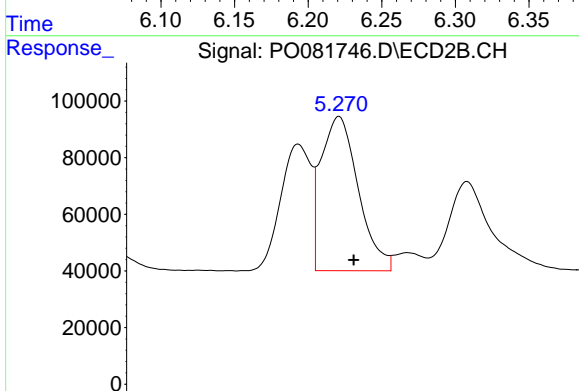
#3 AR-1016-1

R.T.: 5.250 min  
 Delta R.T.: -0.007 min  
 Response: 453159  
 Conc: 503.00 ng/ml



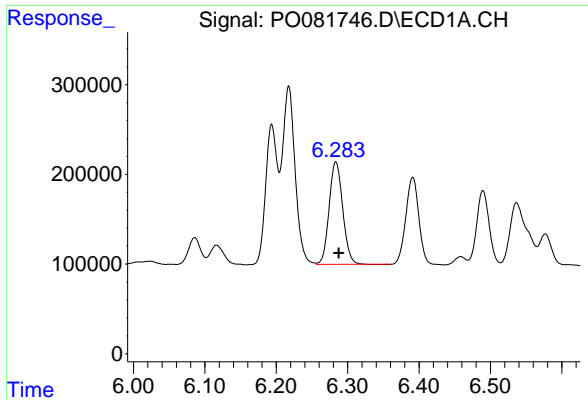
#4 AR-1016-2

R.T.: 6.218 min  
 Delta R.T.: -0.005 min  
 Response: 2471818  
 Conc: 533.26 ng/ml



#4 AR-1016-2

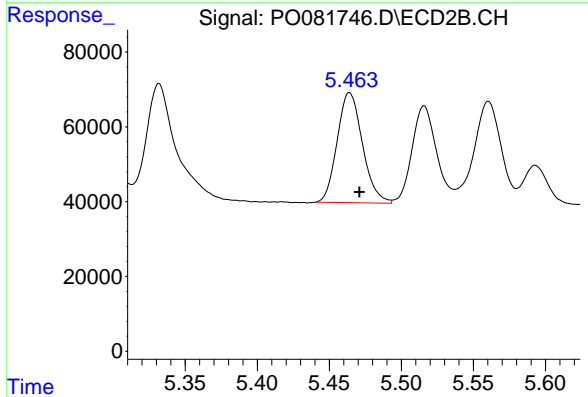
R.T.: 5.270 min  
 Delta R.T.: -0.007 min  
 Response: 682821  
 Conc: 500.02 ng/ml



#5 AR-1016-3

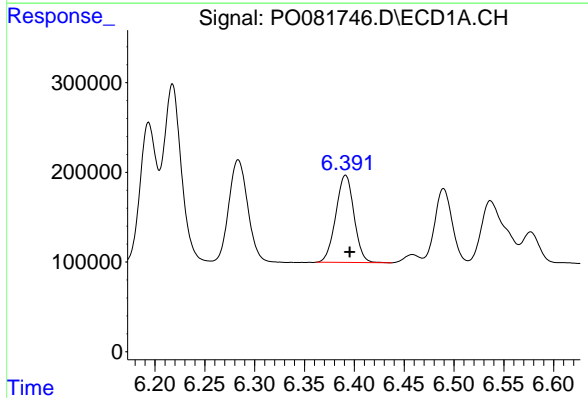
R.T.: 6.284 min  
 Delta R.T.: -0.004 min  
 Response: 1509882  
 Conc: 527.38 ng/ml

Instrument :  
 ECD\_O  
 ClientSampleId :  
 AR1660CCC500



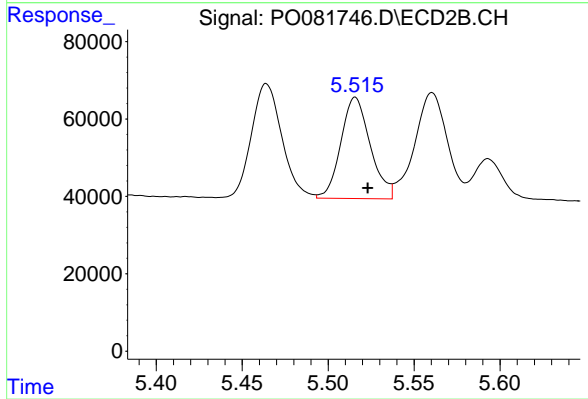
#5 AR-1016-3

R.T.: 5.464 min  
 Delta R.T.: -0.007 min  
 Response: 360020  
 Conc: 507.80 ng/ml



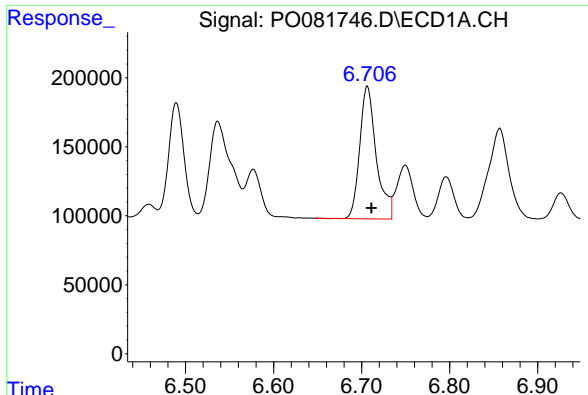
#6 AR-1016-4

R.T.: 6.391 min  
 Delta R.T.: -0.004 min  
 Response: 1234508  
 Conc: 536.69 ng/ml



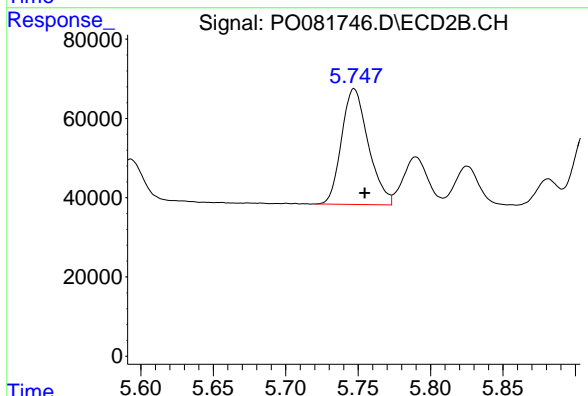
#6 AR-1016-4

R.T.: 5.516 min  
 Delta R.T.: -0.007 min  
 Response: 312694  
 Conc: 504.81 ng/ml

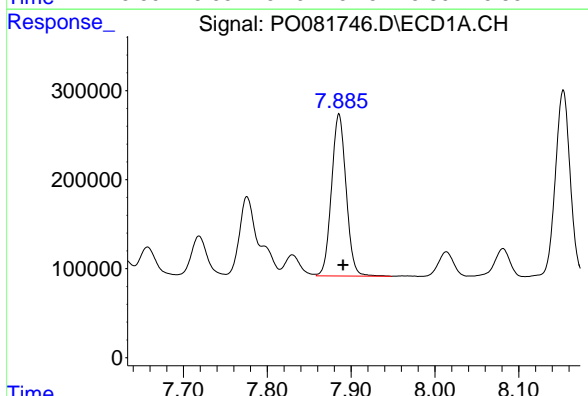


#7 AR-1016-5  
 R.T.: 6.707 min  
 Delta R.T.: -0.005 min  
 Response: 1255497  
 Conc: 551.70 ng/ml

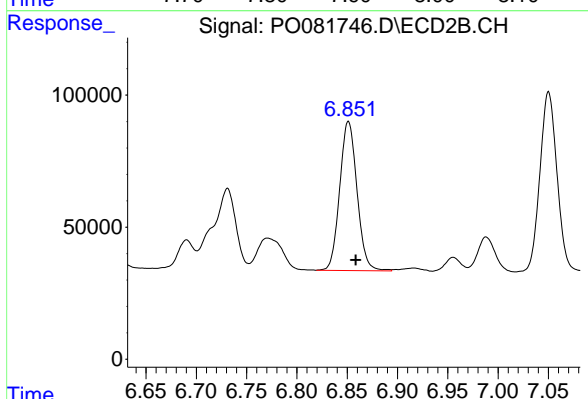
Instrument :  
 ECD\_O  
 ClientSampleId :  
 AR1660CCC500



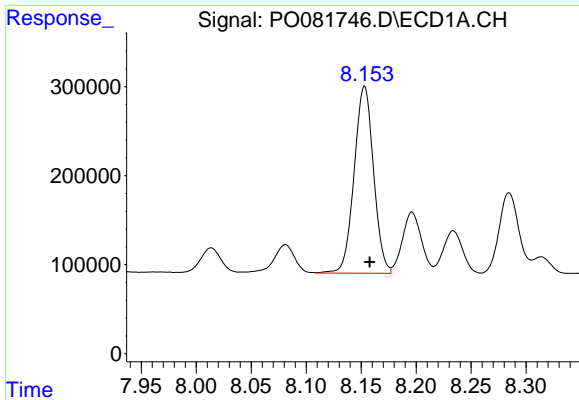
#7 AR-1016-5  
 R.T.: 5.747 min  
 Delta R.T.: -0.007 min  
 Response: 374992  
 Conc: 531.14 ng/ml



#31 AR-1260-1  
 R.T.: 7.886 min  
 Delta R.T.: -0.005 min  
 Response: 2198023  
 Conc: 519.97 ng/ml



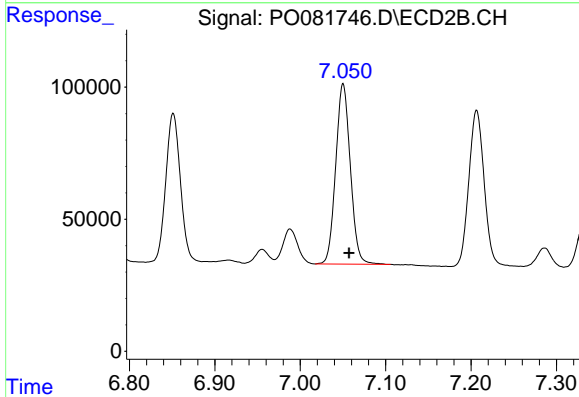
#31 AR-1260-1  
 R.T.: 6.851 min  
 Delta R.T.: -0.007 min  
 Response: 676269  
 Conc: 484.43 ng/ml



#32 AR-1260-2

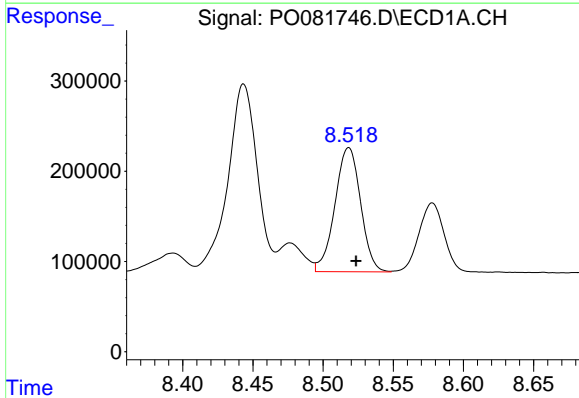
R.T.: 8.153 min  
 Delta R.T.: -0.005 min  
 Response: 2581017  
 Conc: 497.26 ng/ml

Instrument :  
 ECD\_O  
 ClientSampleId :  
 AR1660CCC500



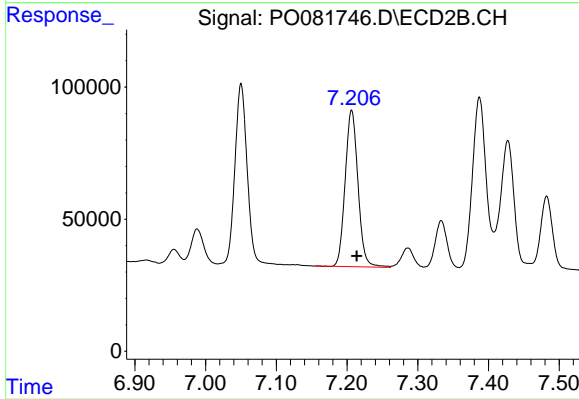
#32 AR-1260-2

R.T.: 7.050 min  
 Delta R.T.: -0.007 min  
 Response: 812522  
 Conc: 497.16 ng/ml



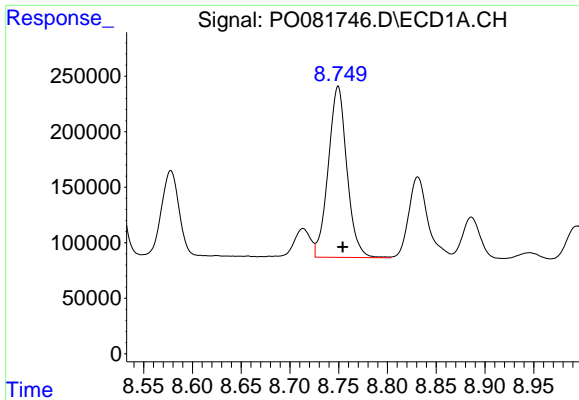
#33 AR-1260-3

R.T.: 8.518 min  
 Delta R.T.: -0.005 min  
 Response: 1752008  
 Conc: 540.70 ng/ml



#33 AR-1260-3

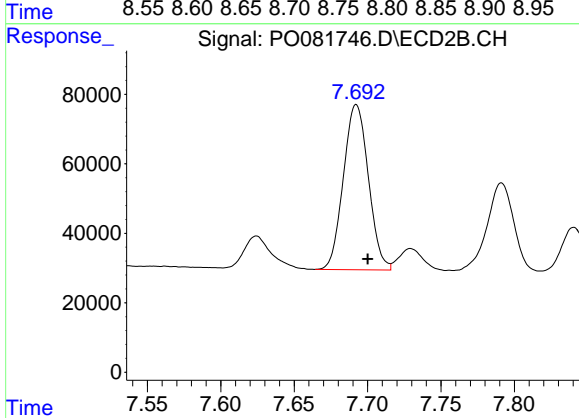
R.T.: 7.207 min  
 Delta R.T.: -0.007 min  
 Response: 744741  
 Conc: 447.86 ng/ml



#34 AR-1260-4

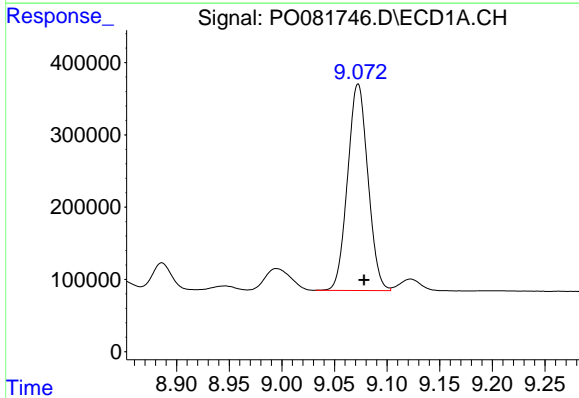
R.T.: 8.749 min  
Delta R.T.: -0.005 min  
Response: 2050792  
Conc: 514.49 ng/ml

Instrument :  
ECD\_O  
ClientSampled :  
AR1660CCC500



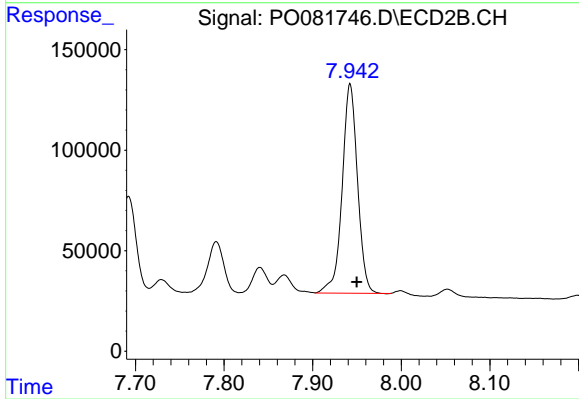
#34 AR-1260-4

R.T.: 7.692 min  
Delta R.T.: -0.008 min  
Response: 564016  
Conc: 507.46 ng/ml



#35 AR-1260-5

R.T.: 9.072 min  
Delta R.T.: -0.006 min  
Response: 3847238  
Conc: 519.33 ng/ml



#35 AR-1260-5

R.T.: 7.942 min  
Delta R.T.: -0.008 min  
Response: 1252818  
Conc: 507.30 ng/ml