

Data Path : Z:\pestpcbsrv\HPCHEM1\ECD_O\Data\PO100422\
 Data File : PO089683.D
 Signal(s) : Signal #1: ECD1A.ch Signal #2: ECD2B.ch
 Acq On : 05 Oct 2022 02:30
 Operator : YP/AJ
 Sample : AR1254ICC750
 Misc :
 ALS Vial : 21 Sample Multiplier: 1

Instrument :
 ECD_O
 ClientSampleId :

Integration File signal 1: autoint1.e
 Integration File signal 2: autoint2.e
 Quant Time: Oct 05 04:18:14 2022
 Quant Method : Z:\pestpcbsrv\HPCHEM1\ECD_O\methods\PO100422.M
 Quant Title : GC EXTRACTABLES
 QLast Update : Wed Oct 05 04:15:19 2022
 Response via : Initial Calibration
 Integrator: ChemStation

Volume Inj. : 2 µl
 Signal #1 Phase : ZB-MR1 Signal #2 Phase: ZB-MR2
 Signal #1 Info : 30Mx0.32mmx 0.50µ Signal #2 Info : 30M x 0.32mm x 0.25µm

Compound	RT#1	RT#2	Resp#1	Resp#2	ng/ml	ng/ml

System Monitoring Compounds						
1) SA Tetrachlo...	4.334	3.557	206.4E6	74580743	73.626	74.673
2) SA Decachlor...	10.095	8.590	84811291	64502274	70.413	72.694
Target Compounds						
26) L6 AR-1254-1	6.364	5.456	52439913	37724842	702.271	716.847
27) L6 AR-1254-2	6.584	5.605	77102940	32769605	707.525	717.156
28) L6 AR-1254-3	6.951	6.011	77476254	53834516	709.620	723.992
29) L6 AR-1254-4	7.238	6.240	54490053	33859573	710.131	725.570
30) L6 AR-1254-5	7.659	6.661	56058423	46465732	712.337	727.937

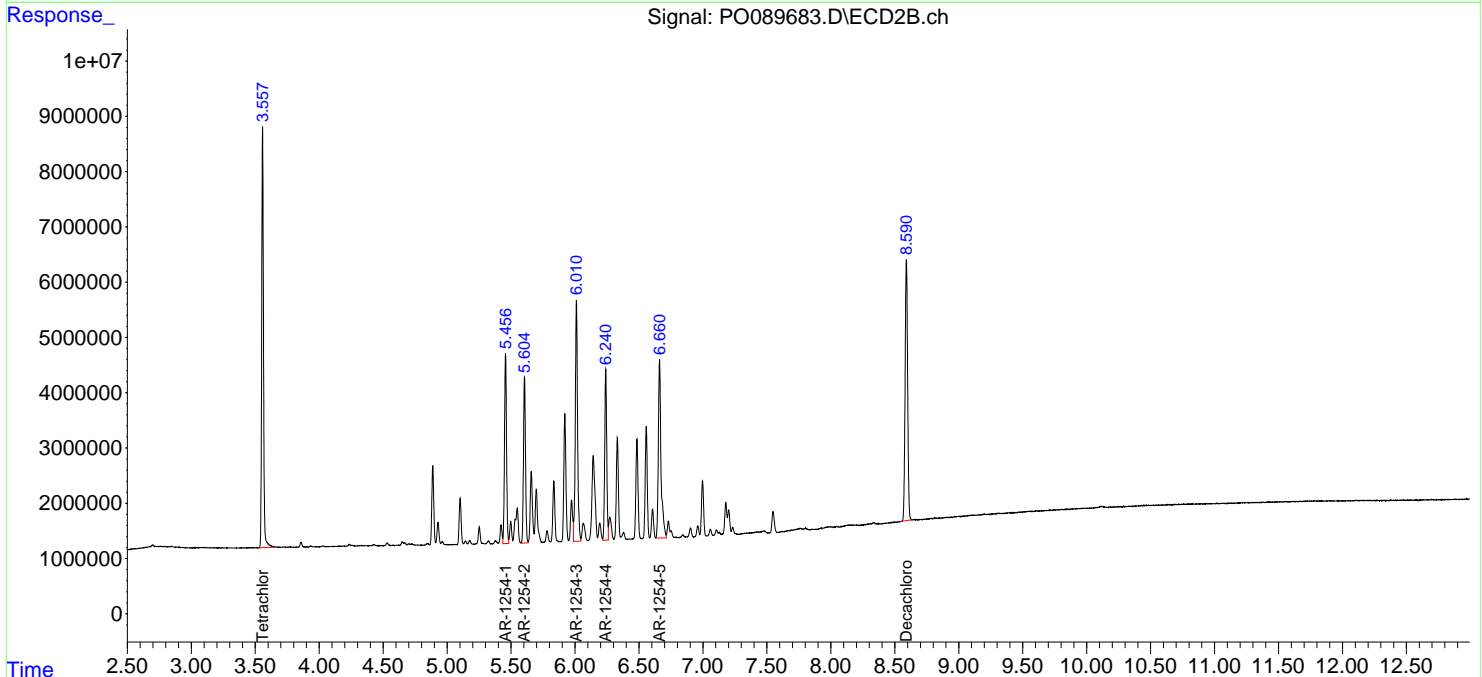
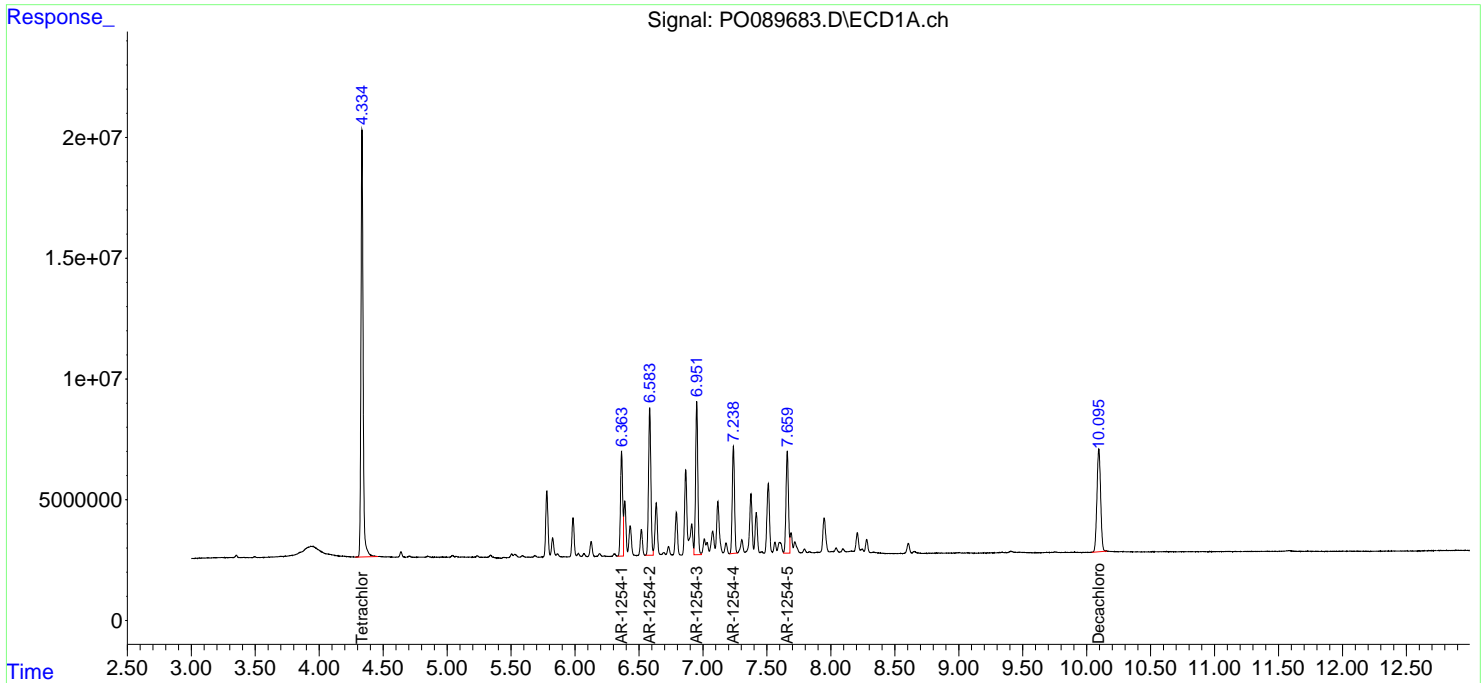
(f)=RT Delta > 1/2 Window (#)=Amounts differ by > 25% (m)=manual int.

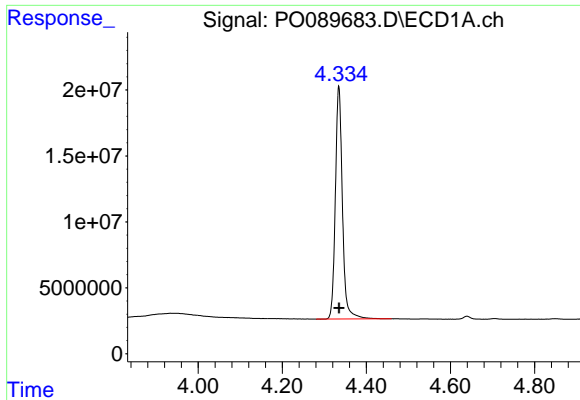
Data Path : Z:\pestpcbsrv\HPCHEM1\ECD_O\Data\PO100422\
 Data File : PO089683.D
 Signal(s) : Signal #1: ECD1A.ch Signal #2: ECD2B.ch
 Acq On : 05 Oct 2022 02:30
 Operator : YP/AJ
 Sample : AR1254ICC750
 Misc :
 ALS Vial : 21 Sample Multiplier: 1

Instrument :
 ECD_O
 ClientSampleId :

Integration File signal 1: autoint1.e
 Integration File signal 2: autoint2.e
 Quant Time: Oct 05 04:18:14 2022
 Quant Method : Z:\pestpcbsrv\HPCHEM1\ECD_O\methods\PO100422.M
 Quant Title : GC EXTRACTABLES
 QLast Update : Wed Oct 05 04:15:19 2022
 Response via : Initial Calibration
 Integrator: ChemStation

Volume Inj. : 2 µl
 Signal #1 Phase : ZB-MR1 Signal #2 Phase: ZB-MR2
 Signal #1 Info : 30Mx0.32mmx 0.50µm Signal #2 Info : 30M x 0.32mm x 0.25µm

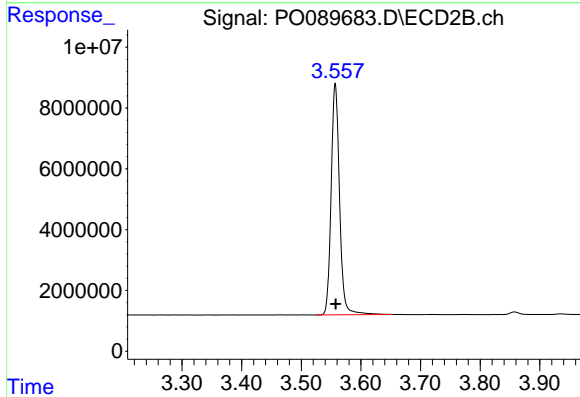




#1 Tetrachloro-m-xylene

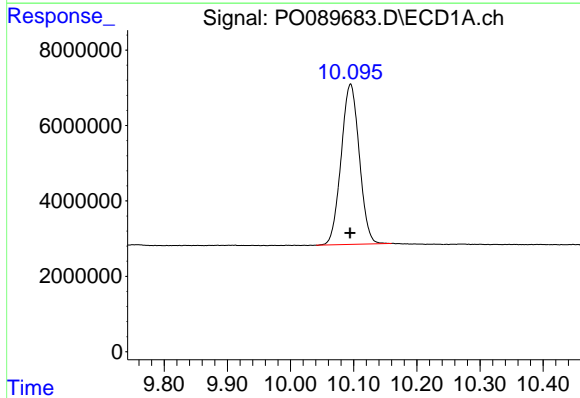
R.T.: 4.334 min
Delta R.T.: 0.000 min
Response: 206396202
Conc: 73.63 ng/ml

Instrument :
ECD_O
ClientSampleId :



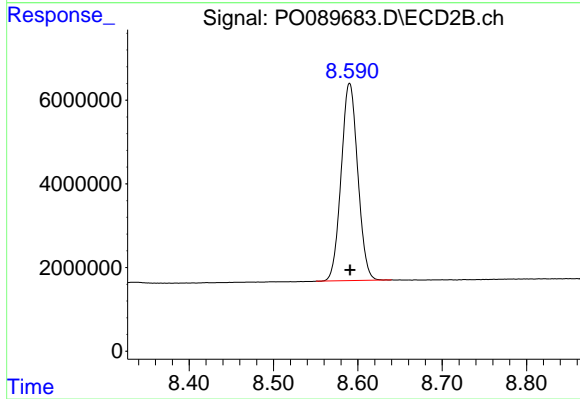
#1 Tetrachloro-m-xylene

R.T.: 3.557 min
Delta R.T.: 0.000 min
Response: 74580743
Conc: 74.67 ng/ml



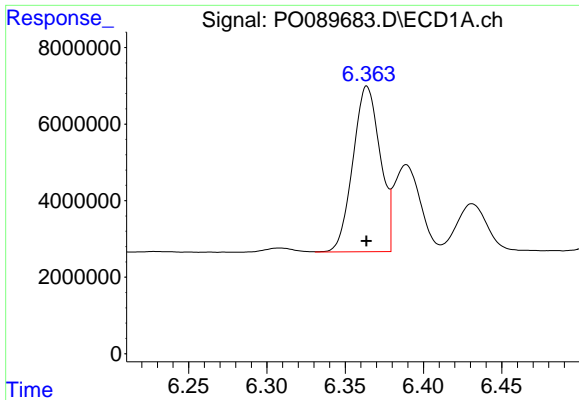
#2 Decachlorobiphenyl

R.T.: 10.095 min
Delta R.T.: 0.000 min
Response: 84811291
Conc: 70.41 ng/ml



#2 Decachlorobiphenyl

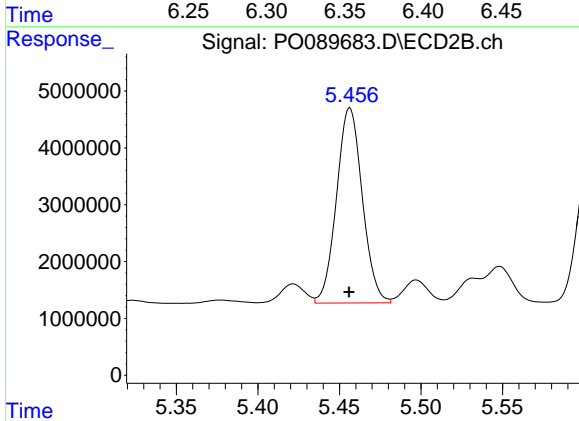
R.T.: 8.590 min
Delta R.T.: 0.000 min
Response: 64502274
Conc: 72.69 ng/ml



#26 AR-1254-1

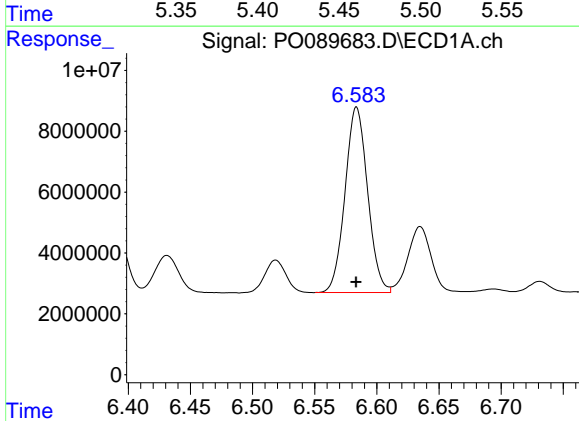
R.T.: 6.364 min
 Delta R.T.: 0.000 min
 Response: 52439913
 Conc: 702.27 ng/ml

Instrument :
 ECD_O
 ClientSampleId :



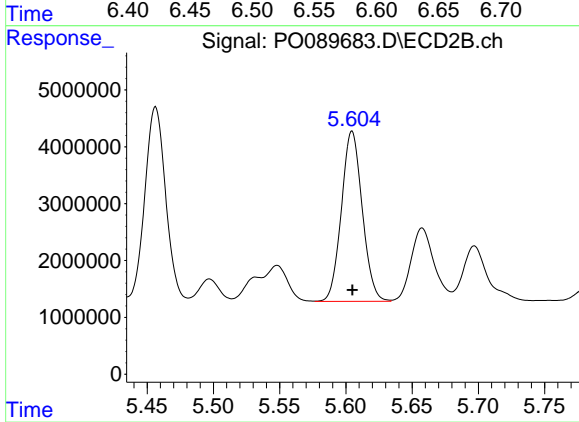
#26 AR-1254-1

R.T.: 5.456 min
 Delta R.T.: 0.000 min
 Response: 37724842
 Conc: 716.85 ng/ml



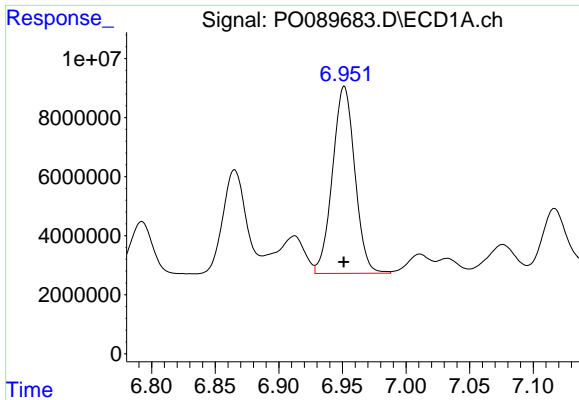
#27 AR-1254-2

R.T.: 6.584 min
 Delta R.T.: 0.000 min
 Response: 77102940
 Conc: 707.53 ng/ml



#27 AR-1254-2

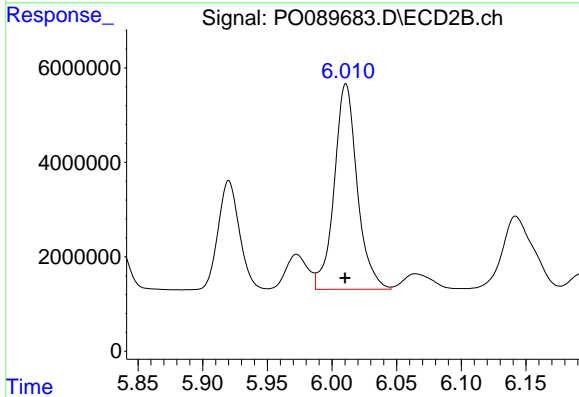
R.T.: 5.605 min
 Delta R.T.: 0.000 min
 Response: 32769605
 Conc: 717.16 ng/ml



#28 AR-1254-3

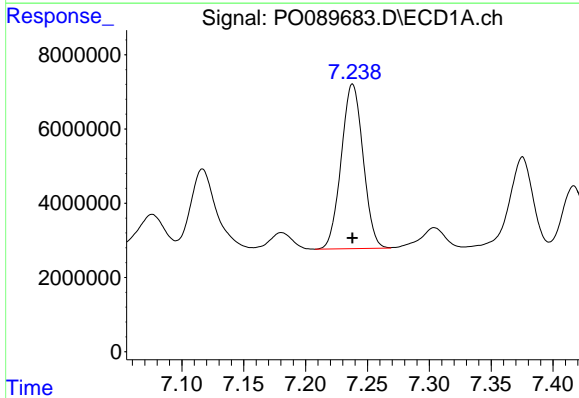
R.T.: 6.951 min
 Delta R.T.: 0.000 min
 Response: 77476254
 Conc: 709.62 ng/ml

Instrument :
 ECD_O
 ClientSampleId :



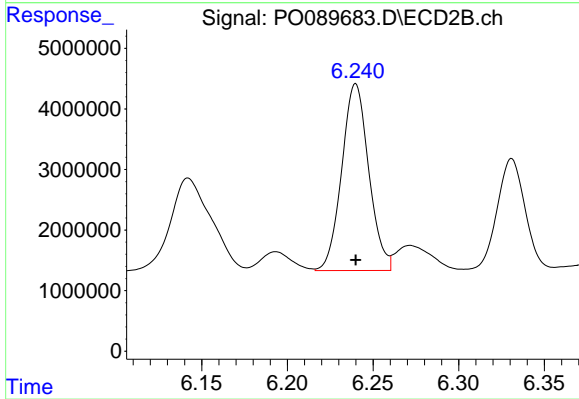
#28 AR-1254-3

R.T.: 6.011 min
 Delta R.T.: 0.000 min
 Response: 53834516
 Conc: 723.99 ng/ml



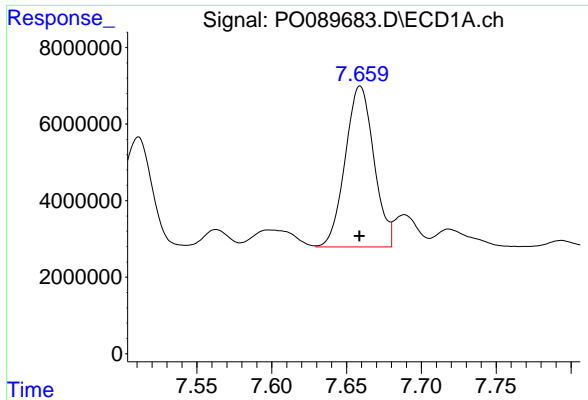
#29 AR-1254-4

R.T.: 7.238 min
 Delta R.T.: 0.000 min
 Response: 54490053
 Conc: 710.13 ng/ml



#29 AR-1254-4

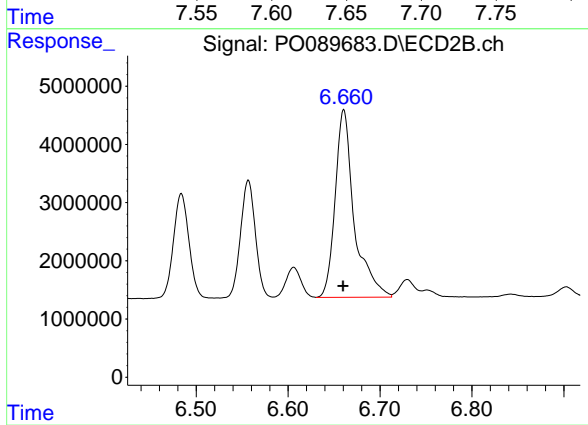
R.T.: 6.240 min
 Delta R.T.: 0.000 min
 Response: 33859573
 Conc: 725.57 ng/ml



#30 AR-1254-5

R.T.: 7.659 min
 Delta R.T.: 0.000 min
 Response: 56058423
 Conc: 712.34 ng/ml

Instrument :
 ECD_O
 ClientSampleId :



#30 AR-1254-5

R.T.: 6.661 min
 Delta R.T.: 0.000 min
 Response: 46465732
 Conc: 727.94 ng/ml