

Data Path : Z:\pestpcbsrv\HPCHEM1\ECD_O\Data\PO100422\
 Data File : PO089680.D
 Signal(s) : Signal #1: ECD1A.ch Signal #2: ECD2B.ch
 Acq On : 05 Oct 2022 01:39
 Operator : YP/AJ
 Sample : AR1248ICC250
 Misc :
 ALS Vial : 18 Sample Multiplier: 1

Instrument :
 ECD_O
 ClientSampleId :
 AR1248ICC250

Integration File signal 1: autoint1.e
 Integration File signal 2: autoint2.e
 Quant Time: Oct 05 03:14:44 2022
 Quant Method : Z:\pestpcbsrv\HPCHEM1\ECD_O\methods\PO100422.M
 Quant Title : GC EXTRACTABLES
 QLast Update : Wed Oct 05 03:14:37 2022
 Response via : Initial Calibration
 Integrator: ChemStation

Volume Inj. : 2 µl
 Signal #1 Phase : ZB-MR2 Signal #2 Phase: ZB-MR2
 Signal #1 Info : 30Mx0.32mmx 0.50µ Signal #2 Info : 30M x 0.32mm x 0.25µm

Compound	RT#1	RT#2	Resp#1	Resp#2	ng/ml	ng/ml

System Monitoring Compounds						
1) SA Tetrachlo...	4.334	3.557	70326001	24116829	25.609	24.742
2) SA Decachlor...	10.094	8.590	30863767	21969733	26.752	25.604
Target Compounds						
21) L5 AR-1248-1	5.504	4.649	12417202	5028006	269.548	252.187
22) L5 AR-1248-2	5.779	4.887	17308608	7141552	268.634	257.188
23) L5 AR-1248-3	5.984	4.929	18507953	7466953	268.775	256.081
24) L5 AR-1248-4	6.389	5.101	19444312	8668408	269.523	253.113
25) L5 AR-1248-5	6.428	5.496	18767475	8506112	267.653	253.464

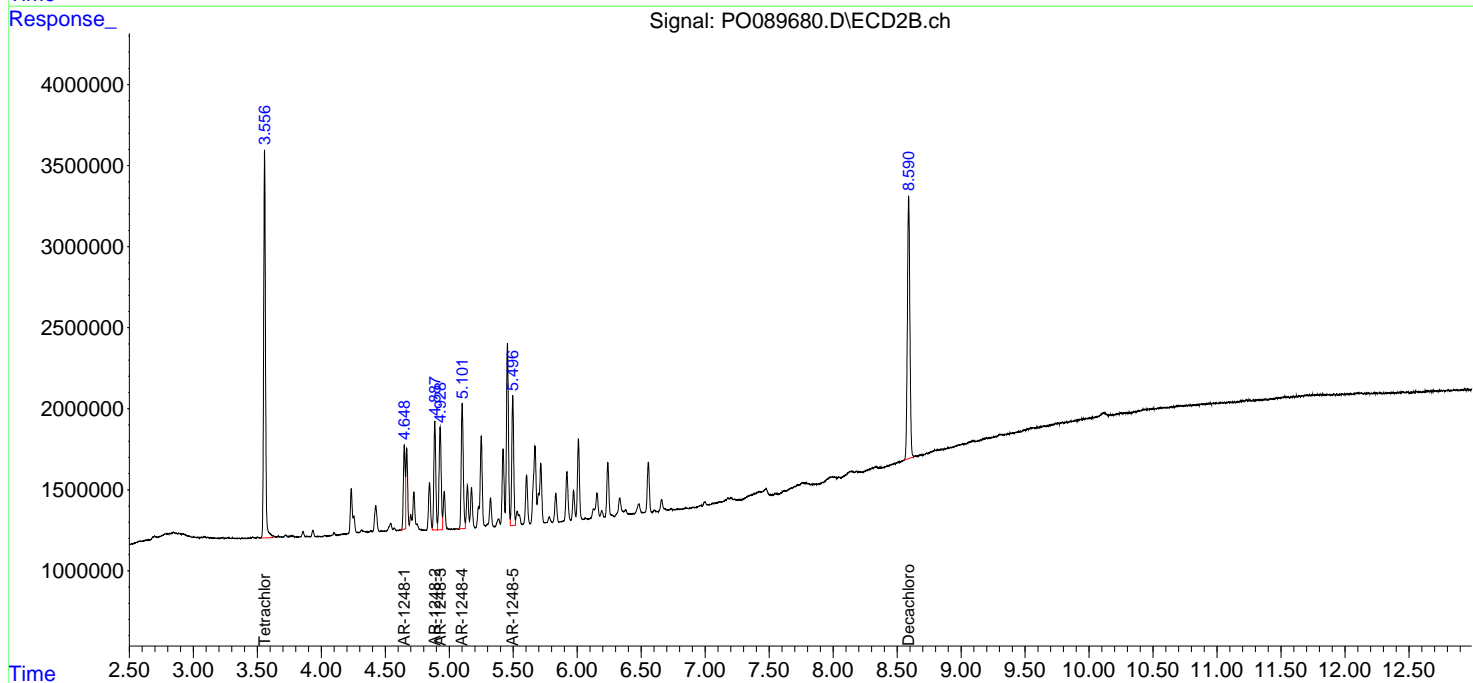
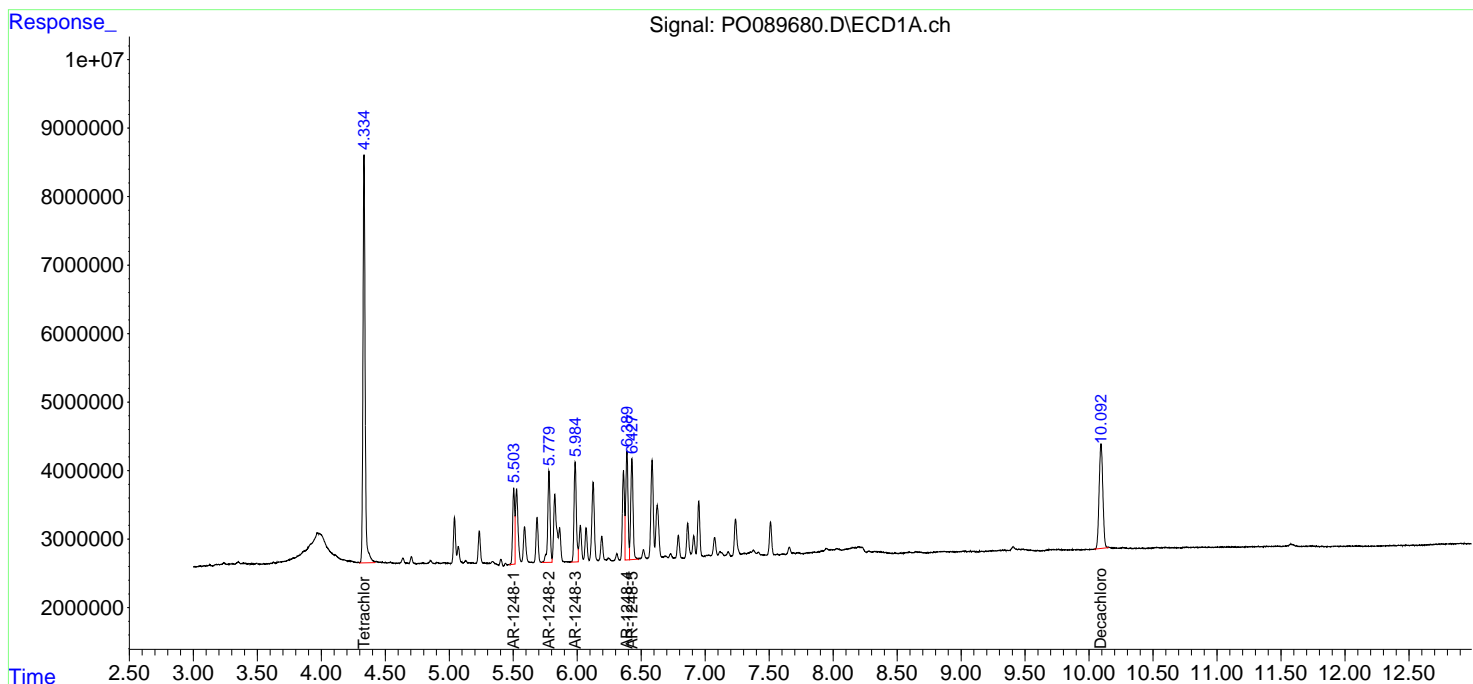
(f)=RT Delta > 1/2 Window (#)=Amounts differ by > 25% (m)=manual int.

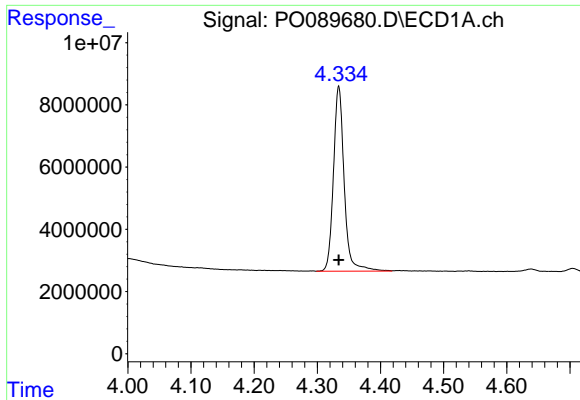
Data Path : Z:\pestpcbsrv\HPCHEM1\ECD_O\Data\PO100422\
 Data File : PO089680.D
 Signal(s) : Signal #1: ECD1A.ch Signal #2: ECD2B.ch
 Acq On : 05 Oct 2022 01:39
 Operator : YP/AJ
 Sample : AR1248ICC250
 Misc :
 ALS Vial : 18 Sample Multiplier: 1

Instrument :
 ECD_O
 ClientSampleId :
 AR1248ICC250

Integration File signal 1: autoint1.e
 Integration File signal 2: autoint2.e
 Quant Time: Oct 05 03:14:44 2022
 Quant Method : Z:\pestpcbsrv\HPCHEM1\ECD_O\methods\PO100422.M
 Quant Title : GC EXTRACTABLES
 QLast Update : Wed Oct 05 03:14:37 2022
 Response via : Initial Calibration
 Integrator: ChemStation

Volume Inj. : 2 µl
 Signal #1 Phase : ZB-MR1 Signal #2 Phase: ZB-MR2
 Signal #1 Info : 30Mx0.32mmx 0.50µ Signal #2 Info : 30M x 0.32mm x 0.25µm

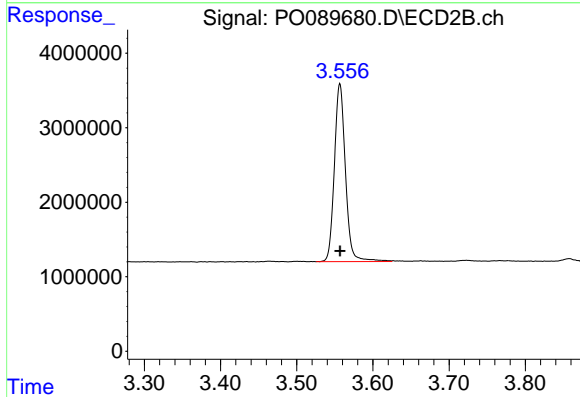




#1 Tetrachloro-m-xylene

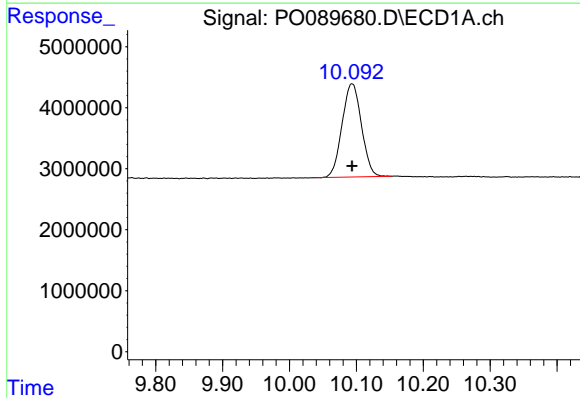
R.T.: 4.334 min
 Delta R.T.: 0.000 min
 Response: 70326001
 Conc: 25.61 ng/ml

Instrument :
 ECD_O
 ClientSampleId :
 AR1248ICC250



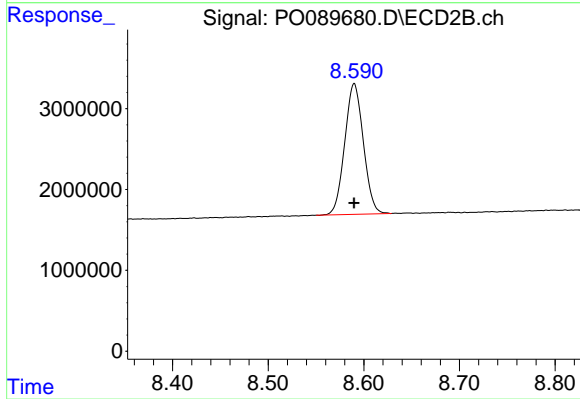
#1 Tetrachloro-m-xylene

R.T.: 3.557 min
 Delta R.T.: 0.000 min
 Response: 24116829
 Conc: 24.74 ng/ml



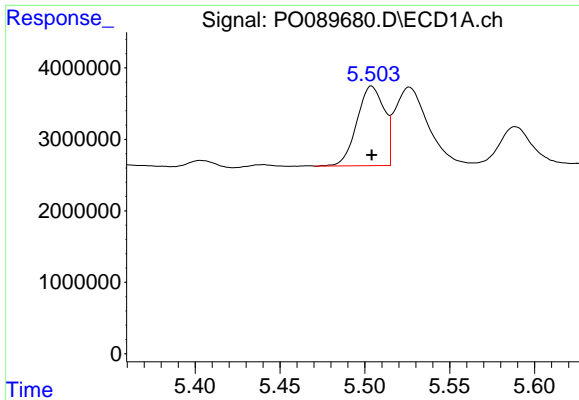
#2 Decachlorobiphenyl

R.T.: 10.094 min
 Delta R.T.: 0.000 min
 Response: 30863767
 Conc: 26.75 ng/ml



#2 Decachlorobiphenyl

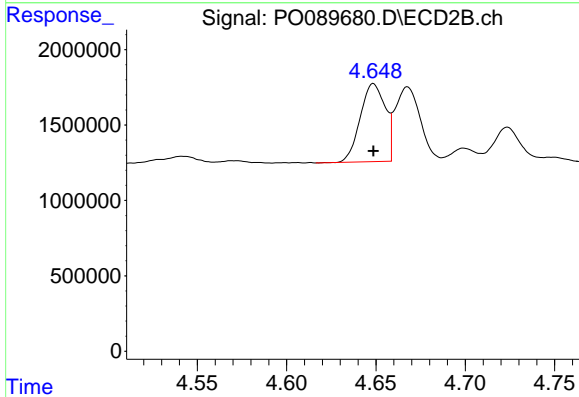
R.T.: 8.590 min
 Delta R.T.: 0.000 min
 Response: 21969733
 Conc: 25.60 ng/ml



#21 AR-1248-1

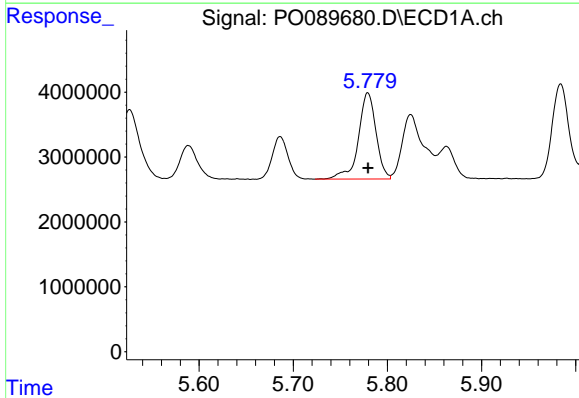
R.T.: 5.504 min
 Delta R.T.: 0.000 min
 Response: 12417202
 Conc: 269.55 ng/ml

Instrument :
 ECD_O
 ClientSampleId :
 AR1248ICC250



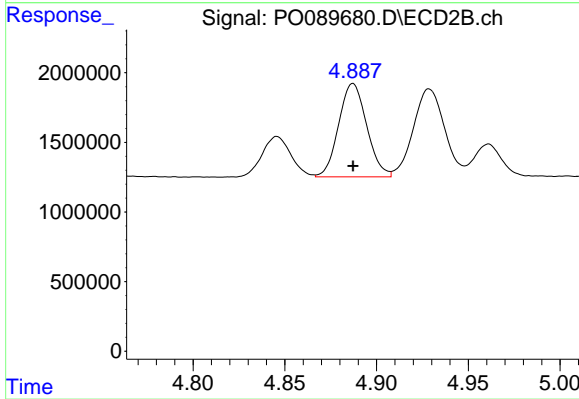
#21 AR-1248-1

R.T.: 4.649 min
 Delta R.T.: 0.000 min
 Response: 5028006
 Conc: 252.19 ng/ml



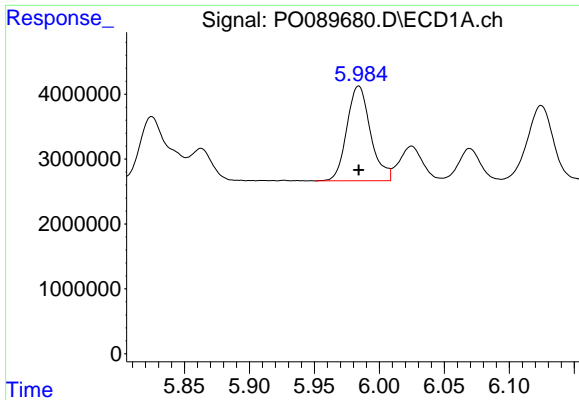
#22 AR-1248-2

R.T.: 5.779 min
 Delta R.T.: 0.000 min
 Response: 17308608
 Conc: 268.63 ng/ml



#22 AR-1248-2

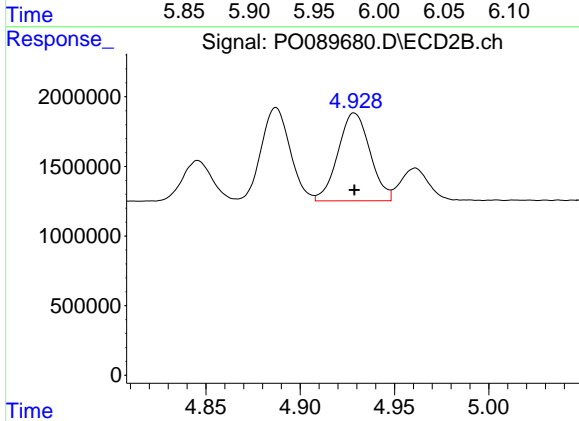
R.T.: 4.887 min
 Delta R.T.: 0.000 min
 Response: 7141552
 Conc: 257.19 ng/ml



#23 AR-1248-3

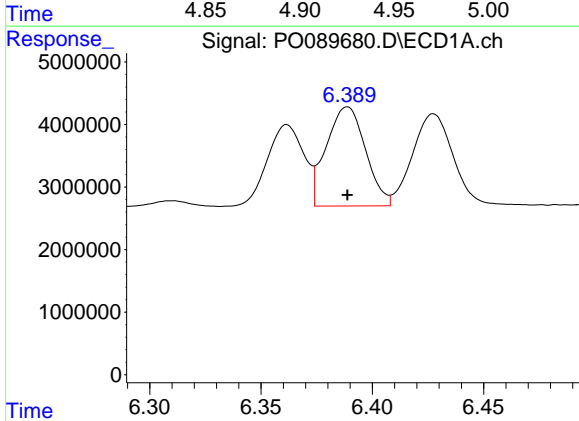
R.T.: 5.984 min
 Delta R.T.: 0.000 min
 Response: 18507953
 Conc: 268.77 ng/ml

Instrument :
 ECD_O
 ClientSampleId :
 AR1248ICC250



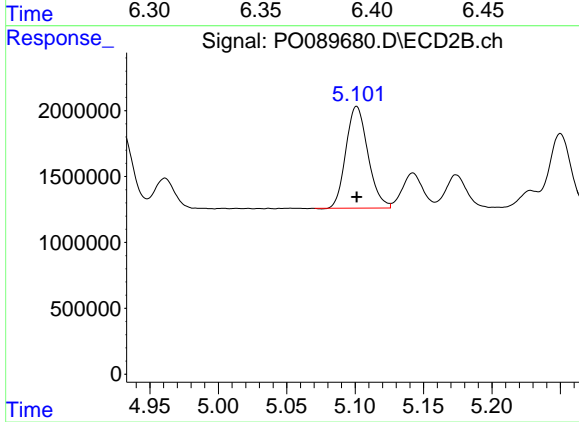
#23 AR-1248-3

R.T.: 4.929 min
 Delta R.T.: 0.000 min
 Response: 7466953
 Conc: 256.08 ng/ml



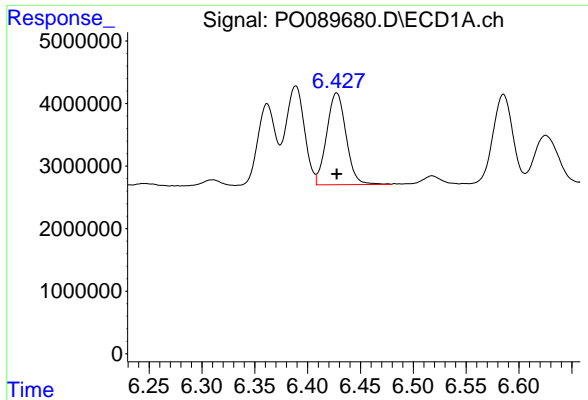
#24 AR-1248-4

R.T.: 6.389 min
 Delta R.T.: 0.000 min
 Response: 19444312
 Conc: 269.52 ng/ml



#24 AR-1248-4

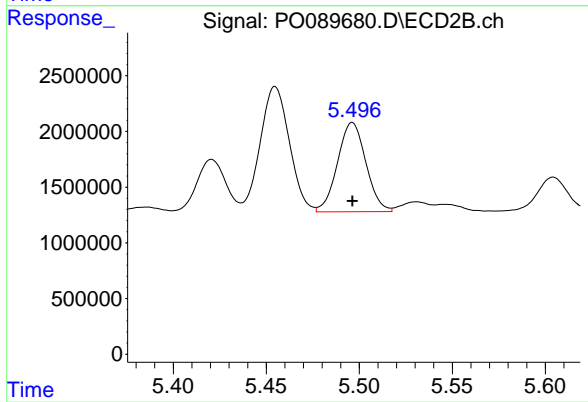
R.T.: 5.101 min
 Delta R.T.: 0.000 min
 Response: 8668408
 Conc: 253.11 ng/ml



#25 AR-1248-5

R.T.: 6.428 min
Delta R.T.: 0.000 min
Response: 18767475
Conc: 267.65 ng/ml

Instrument :
ECD_O
ClientSampleId :
AR1248ICC250



#25 AR-1248-5

R.T.: 5.496 min
Delta R.T.: 0.000 min
Response: 8506112
Conc: 253.46 ng/ml