

Data Path : Z:\pestpcbsrv\HPCHEM1\ECD_0\Data\PO100423\
 Data File : PO098513.D
 Signal(s) : Signal #1: ECD1A.ch Signal #2: ECD2B.ch
 Acq On : 04 Oct 2023 11:35
 Operator : YP/AJ
 Sample : AR1242CCC500
 Misc :
 ALS Vial : 4 Sample Multiplier: 1

Instrument :
 ECD_0
ClientSampleId :
 AR1242CCC500

Manual Integrations
APPROVED

Reviewed By :Yogesh Patel 10/05/2023
 Supervised By :Ankita Jodhani 10/05/2023

Integration File signal 1: autoint1.e
 Integration File signal 2: autoint2.e
 Quant Time: Oct 04 14:01:18 2023
 Quant Method : Z:\pestpcbsrv\HPCHEM1\ECD_0\methods\PO092723.M
 Quant Title : GC EXTRACTABLES
 QLast Update : Thu Sep 28 01:18:56 2023
 Response via : Initial Calibration
 Integrator: ChemStation

Volume Inj. : 2 µl
 Signal #1 Phase : ZB-MR1 Signal #2 Phase: ZB-MR2
 Signal #1 Info : 30Mx0.32mmx 0.50µ Signal #2 Info : 30M x 0.32mm x 0.25µm

Compound	RT#1	RT#2	Resp#1	Resp#2	ng/ml	ng/ml

System Monitoring Compounds						
1) SA Tetrachlo...	4.483	3.635	86879838	33846091	45.246	43.456
2) SA Decachlor...	10.295	8.643	59861284	26687217	49.315	49.811m
Target Compounds						
16) L4 AR-1242-1	5.657	4.718	21911036	9390786	481.174	448.550
17) L4 AR-1242-2	5.680	4.736	33139404	13453870	483.858	462.699
18) L4 AR-1242-3	5.743	4.913	20281692	7170118	478.950	458.797
19) L4 AR-1242-4	5.841	4.996	15694411	7867574	478.323	475.027
20) L4 AR-1242-5	6.582	5.519	17514486	9053069	494.463	487.813

(f)=RT Delta > 1/2 Window (#)=Amounts differ by > 25% (m)=manual int.

Data Path : Z:\pestpcbsrv\HPCHEM1\ECD_O\Data\PO100423\
 Data File : PO098513.D
 Signal(s) : Signal #1: ECD1A.ch Signal #2: ECD2B.ch
 Acq On : 04 Oct 2023 11:35
 Operator : YP/AJ
 Sample : AR1242CCC500
 Misc :
 ALS Vial : 4 Sample Multiplier: 1

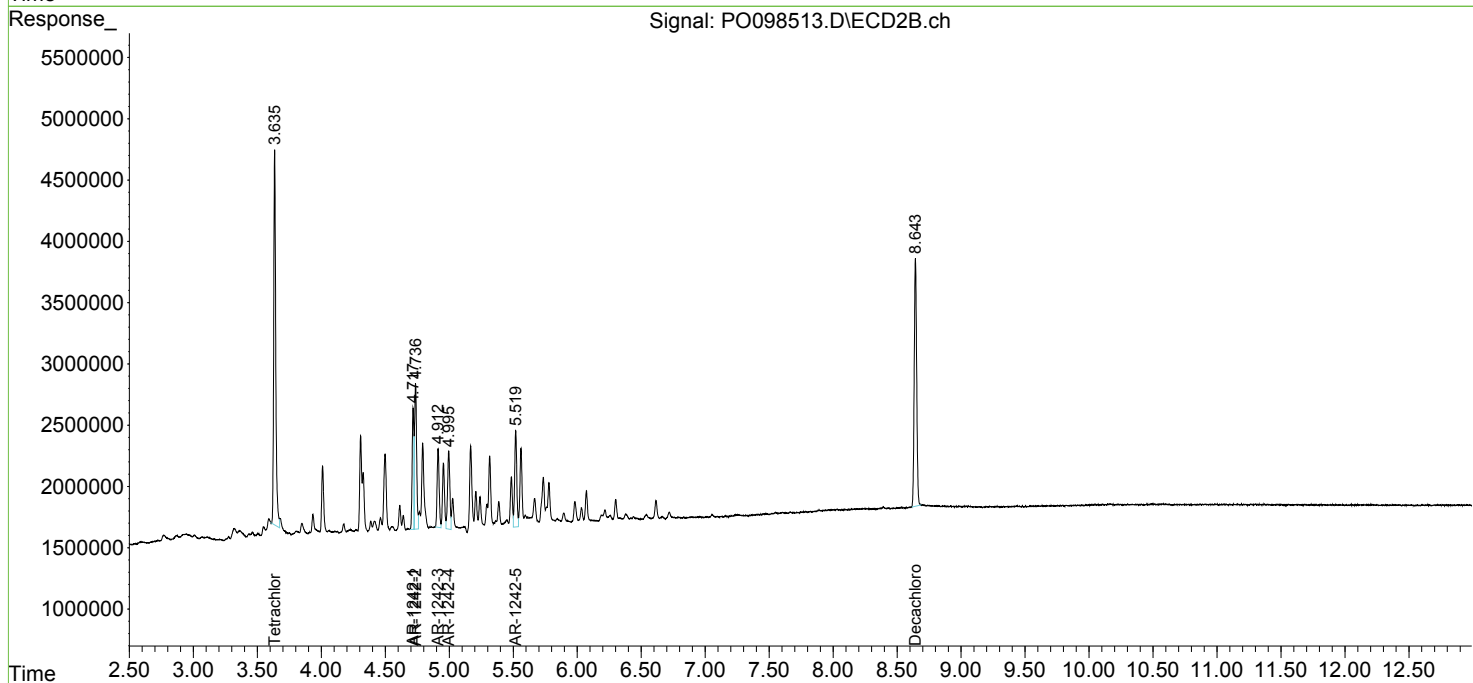
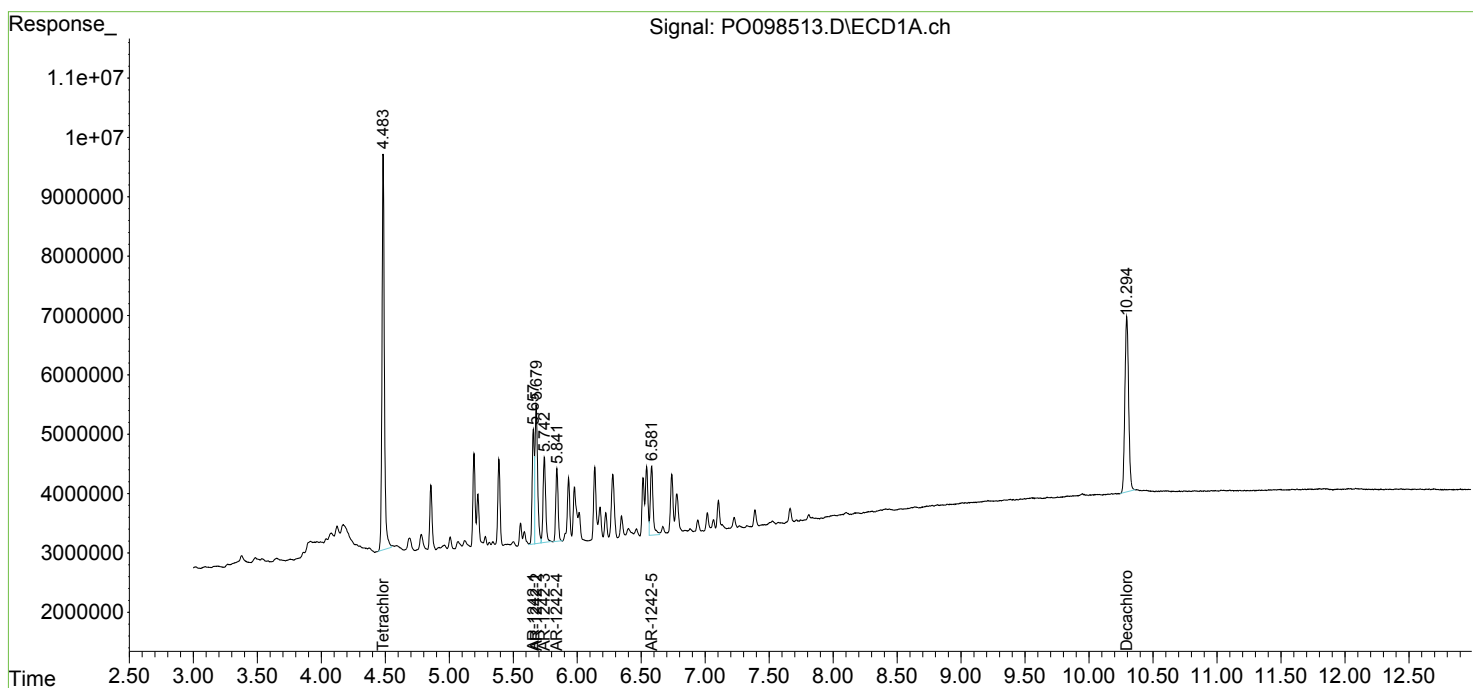
Instrument :
 ECD_O
 ClientSampleId :
 AR1242CCC500

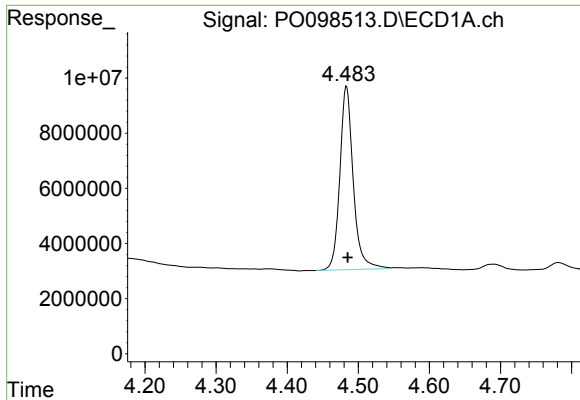
Manual Integrations
 APPROVED

Reviewed By :Yogesh Patel 10/05/2023
 Supervised By :Ankita Jodhani 10/05/2023

Integration File signal 1: autoint1.e
 Integration File signal 2: autoint2.e
 Quant Time: Oct 04 14:01:18 2023
 Quant Method : Z:\pestpcbsrv\HPCHEM1\ECD_O\methods\PO092723.M
 Quant Title : GC EXTRACTABLES
 QLast Update : Thu Sep 28 01:18:56 2023
 Response via : Initial Calibration
 Integrator: ChemStation

Volume Inj. : 2 µl
 Signal #1 Phase : ZB-MR1 Signal #2 Phase: ZB-MR2
 Signal #1 Info : 30Mx0.32mmx 0.50µ Signal #2 Info : 30M x 0.32mm x 0.25µm



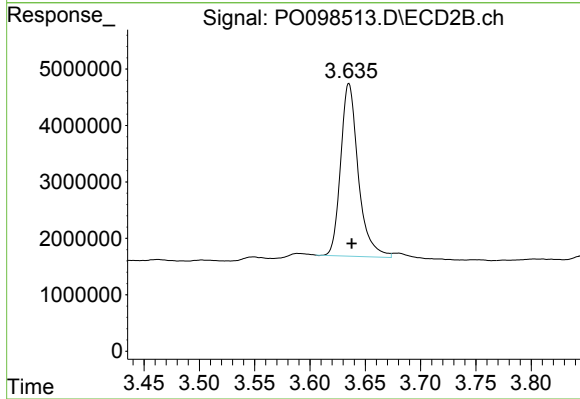


#1 Tetrachloro-m-xylene
 R.T.: 4.483 min
 Delta R.T.: -0.002 min
 Response: 86879838
 Conc: 45.25 ng/ml

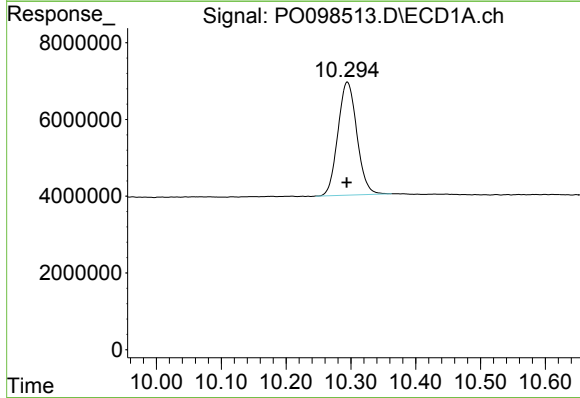
Instrument :
 ECD_O
 ClientSampleId :
 AR1242CCC500

Manual Integrations
 APPROVED

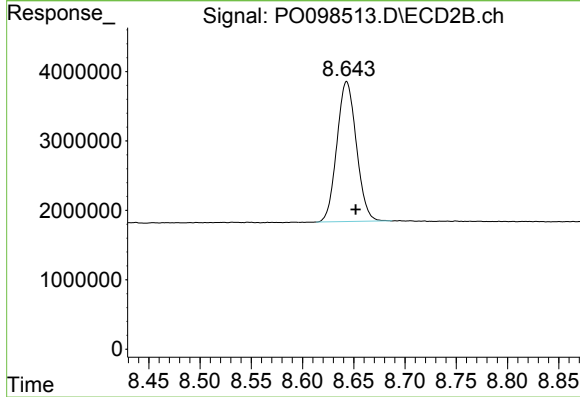
Reviewed By :Yogesh Patel 10/05/2023
 Supervised By :Ankita Jodhani 10/05/2023



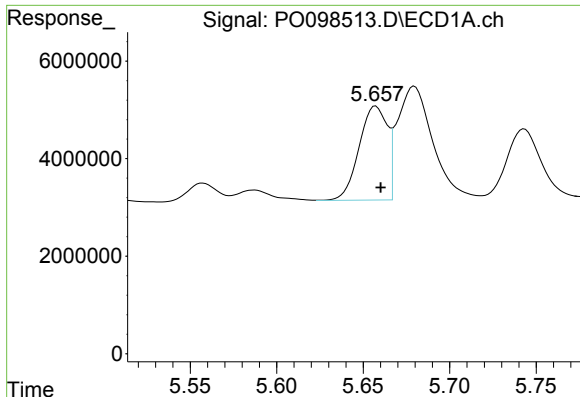
#1 Tetrachloro-m-xylene
 R.T.: 3.635 min
 Delta R.T.: -0.002 min
 Response: 33846091
 Conc: 43.46 ng/ml



#2 Decachlorobiphenyl
 R.T.: 10.295 min
 Delta R.T.: 0.001 min
 Response: 59861284
 Conc: 49.31 ng/ml



#2 Decachlorobiphenyl
 R.T.: 8.643 min
 Delta R.T.: -0.009 min
 Response: 26687217
 Conc: 49.81 ng/ml m



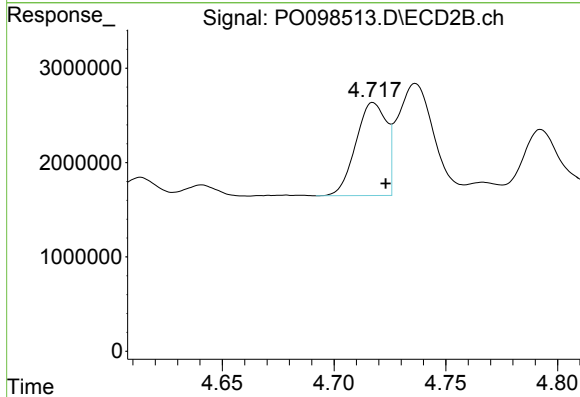
#16 AR-1242-1

R.T.: 5.657 min
 Delta R.T.: -0.003 min
 Response: 21911036
 Conc: 481.17 ng/ml

Instrument :
 ECD_O
 ClientSampleId :
 AR1242CCC500

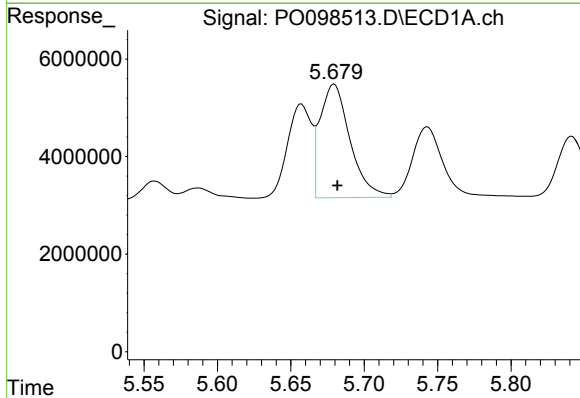
Manual Integrations
 APPROVED

Reviewed By :Yogesh Patel 10/05/2023
 Supervised By :Ankita Jodhani 10/05/2023



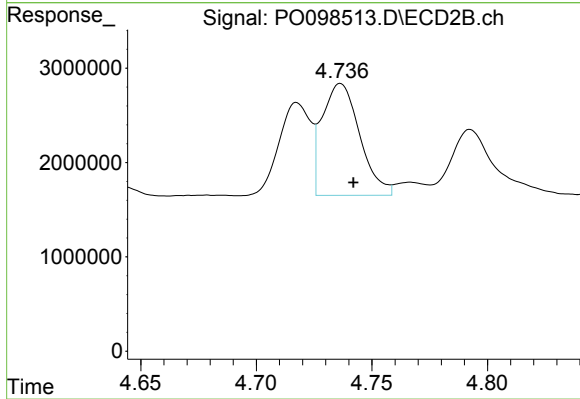
#16 AR-1242-1

R.T.: 4.718 min
 Delta R.T.: -0.006 min
 Response: 9390786
 Conc: 448.55 ng/ml



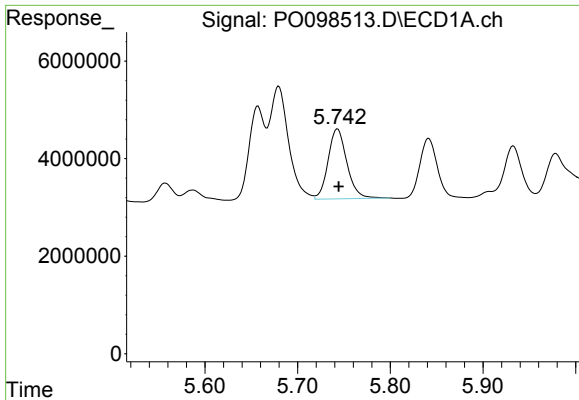
#17 AR-1242-2

R.T.: 5.680 min
 Delta R.T.: -0.002 min
 Response: 33139404
 Conc: 483.86 ng/ml



#17 AR-1242-2

R.T.: 4.736 min
 Delta R.T.: -0.006 min
 Response: 13453870
 Conc: 462.70 ng/ml



#18 AR-1242-3

R.T.: 5.743 min
 Delta R.T.: -0.001 min
 Response: 20281692
 Conc: 478.95 ng/ml

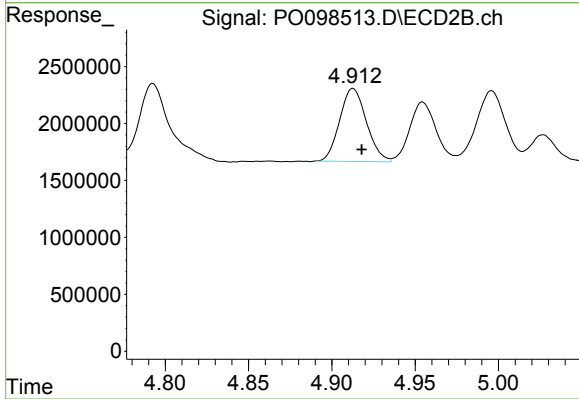
Instrument :

ECD_O

ClientSampleId :
 AR1242CCC500

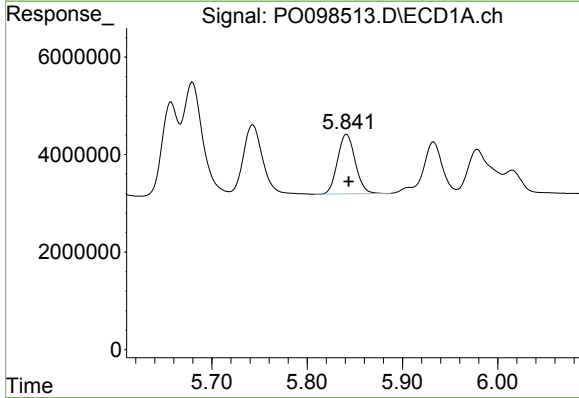
Manual Integrations
 APPROVED

Reviewed By :Yogesh Patel 10/05/2023
 Supervised By :Ankita Jodhani 10/05/2023



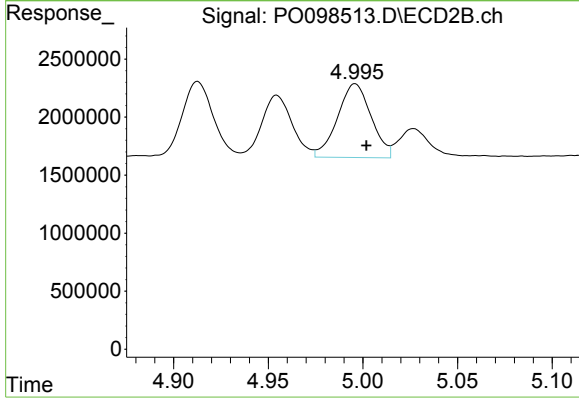
#18 AR-1242-3

R.T.: 4.913 min
 Delta R.T.: -0.005 min
 Response: 7170118
 Conc: 458.80 ng/ml



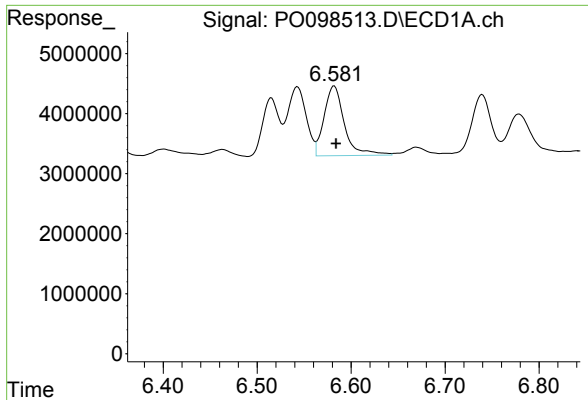
#19 AR-1242-4

R.T.: 5.841 min
 Delta R.T.: -0.002 min
 Response: 15694411
 Conc: 478.32 ng/ml



#19 AR-1242-4

R.T.: 4.996 min
 Delta R.T.: -0.006 min
 Response: 7867574
 Conc: 475.03 ng/ml



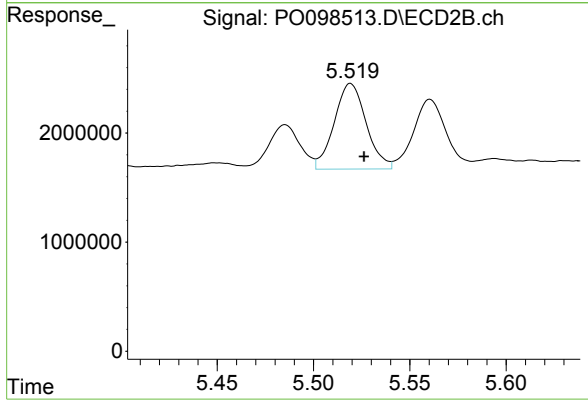
#20 AR-1242-5

R.T.: 6.582 min
 Delta R.T.: -0.002 min
 Response: 17514486
 Conc: 494.46 ng/ml

Instrument :
 ECD_O
 ClientSampleId :
 AR1242CCC500

Manual Integrations
 APPROVED

Reviewed By :Yogesh Patel 10/05/2023
 Supervised By :Ankita Jodhani 10/05/2023



#20 AR-1242-5

R.T.: 5.519 min
 Delta R.T.: -0.007 min
 Response: 9053069
 Conc: 487.81 ng/ml