

Data Path : Z:\pestpcbsrv\HPCHEM1\ECD_0\Data\PO100423\
 Data File : PO098519.D
 Signal(s) : Signal #1: ECD1A.ch Signal #2: ECD2B.ch
 Acq On : 04 Oct 2023 13:45
 Operator : YP/AJ
 Sample : 04720-01
 Misc :
 ALS Vial : 9 Sample Multiplier: 1

Instrument :
 ECD_0
ClientSampleId :
 ORA-1042

Manual Integrations
APPROVED

Reviewed By :Yogesh Patel 10/05/2023
 Supervised By :Ankita Jodhani 10/05/2023

Integration File signal 1: autoint1.e
 Integration File signal 2: autoint2.e
 Quant Time: Oct 04 14:05:07 2023
 Quant Method : Z:\pestpcbsrv\HPCHEM1\ECD_0\methods\PO092723.M
 Quant Title : GC EXTRACTABLES
 QLast Update : Thu Sep 28 01:18:56 2023
 Response via : Initial Calibration
 Integrator: ChemStation

Volume Inj. : 2 µl
 Signal #1 Phase : ZB-MR1 Signal #2 Phase: ZB-MR2
 Signal #1 Info : 30Mx0.32mmx 0.50µ Signal #2 Info : 30M x 0.32mm x 0.25µm

Compound	RT#1	RT#2	Resp#1	Resp#2	ng/ml	ng/ml
----------	------	------	--------	--------	-------	-------

System Monitoring Compounds

1) SA Tetrachlo...	4.482	3.636	26172115	11512909	13.630m	14.782m
2) SA Decachlor...	10.303	8.652	27756465	8376040	22.866m	15.634 #

Target Compounds

(f)=RT Delta > 1/2 Window (#)=Amounts differ by > 25% (m)=manual int.

Data Path : Z:\pestpcbsrv\HPCHEM1\ECD_O\Data\PO100423\
 Data File : PO098519.D
 Signal(s) : Signal #1: ECD1A.ch Signal #2: ECD2B.ch
 Acq On : 04 Oct 2023 13:45
 Operator : YP/AJ
 Sample : 04720-01
 Misc :
 ALS Vial : 9 Sample Multiplier: 1

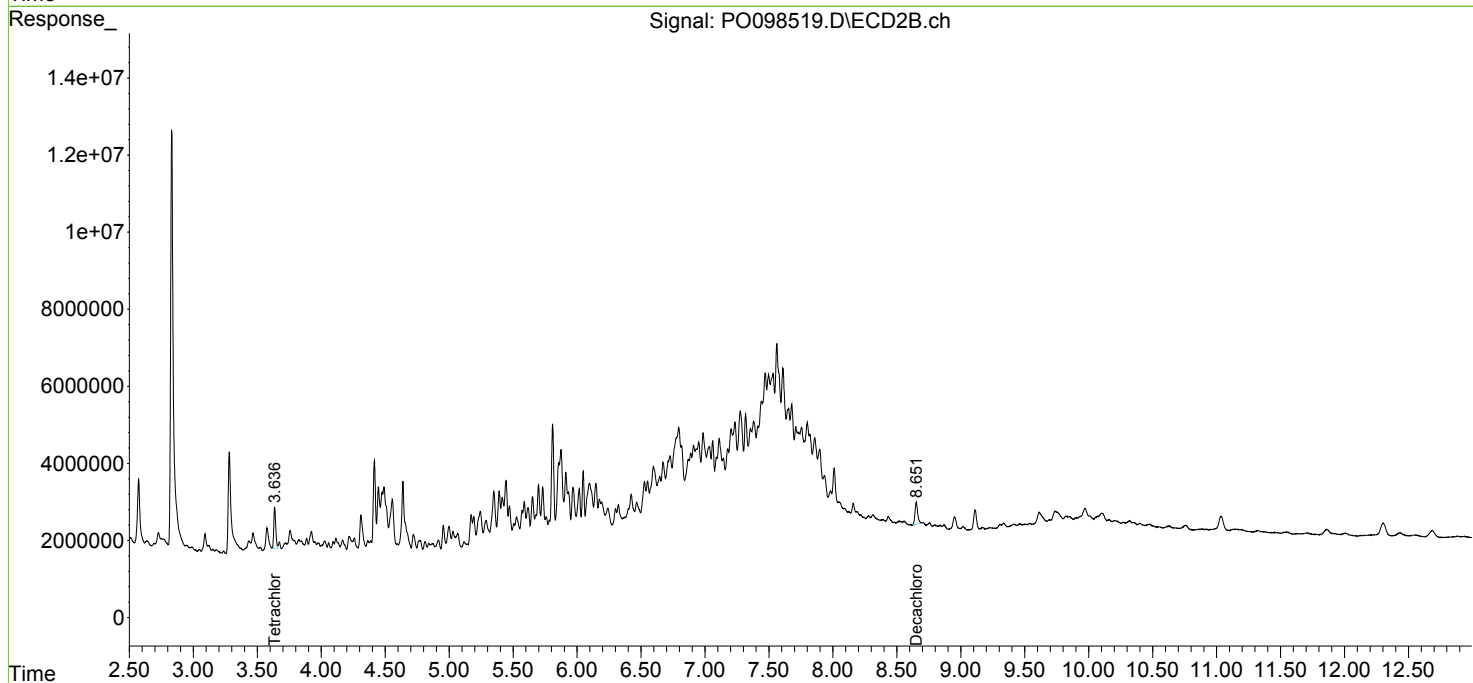
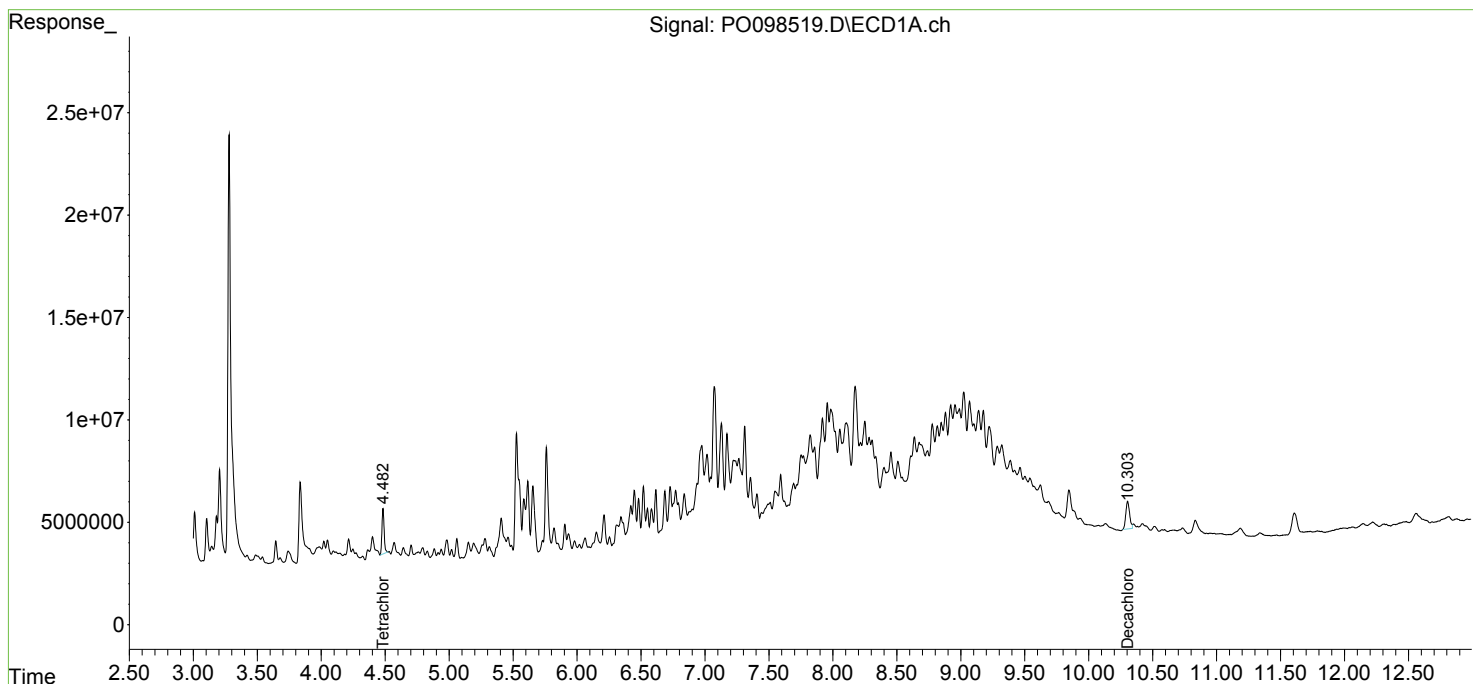
Instrument :
 ECD_O
 ClientSampleId :
 ORA-1042

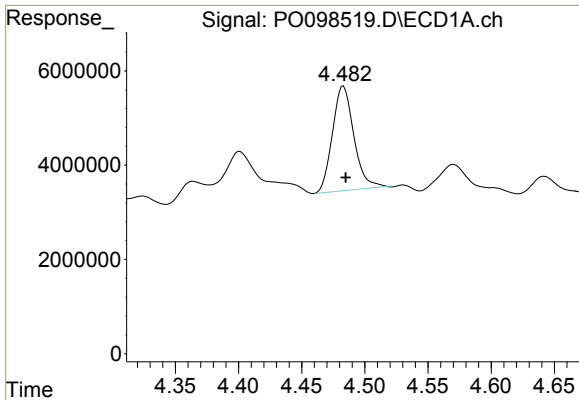
Manual Integrations
APPROVED

Reviewed By :Yogesh Patel 10/05/2023
 Supervised By :Ankita Jodhani 10/05/2023

Integration File signal 1: autoint1.e
 Integration File signal 2: autoint2.e
 Quant Time: Oct 04 14:05:07 2023
 Quant Method : Z:\pestpcbsrv\HPCHEM1\ECD_O\methods\PO092723.M
 Quant Title : GC EXTRACTABLES
 QLast Update : Thu Sep 28 01:18:56 2023
 Response via : Initial Calibration
 Integrator: ChemStation

Volume Inj. : 2 µl
 Signal #1 Phase : ZB-MR1 Signal #2 Phase: ZB-MR2
 Signal #1 Info : 30Mx0.32mmx 0.50µ Signal #2 Info : 30M x 0.32mm x 0.25µm





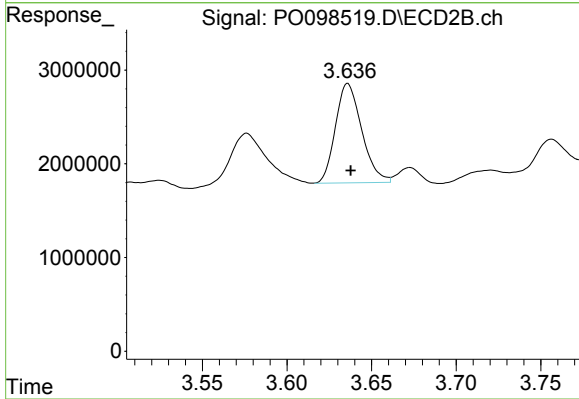
#1 Tetrachloro-m-xylene

R.T.: 4.482 min
 Delta R.T.: -0.003 min
 Response: 26172115
 Conc: 13.63 ng/ml

Instrument :
 ECD_O
 ClientSampleId :
 ORA-1042

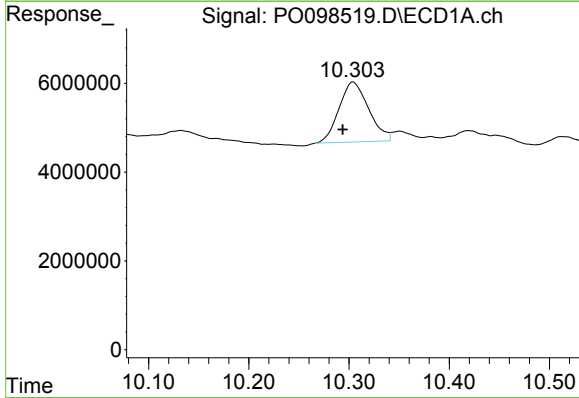
Manual Integrations
 APPROVED

Reviewed By :Yogesh Patel 10/05/2023
 Supervised By :Ankita Jodhani 10/05/2023



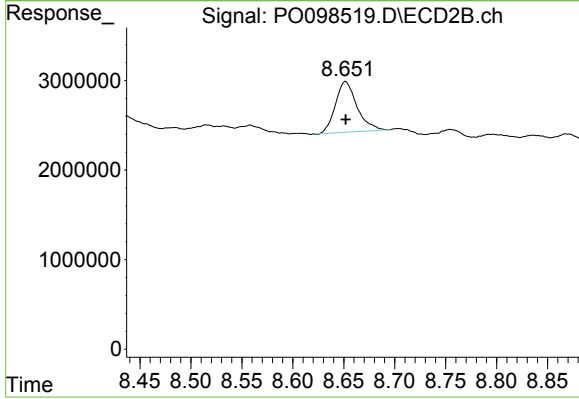
#1 Tetrachloro-m-xylene

R.T.: 3.636 min
 Delta R.T.: -0.002 min
 Response: 11512909
 Conc: 14.78 ng/ml m



#2 Decachlorobiphenyl

R.T.: 10.303 min
 Delta R.T.: 0.010 min
 Response: 27756465
 Conc: 22.87 ng/ml m



#2 Decachlorobiphenyl

R.T.: 8.652 min
 Delta R.T.: 0.000 min
 Response: 8376040
 Conc: 15.63 ng/ml