

Data Path : Z:\pestpcbsrv\HPCHEM1\ECD\_0\Data\PO100423\  
 Data File : PO098530.D  
 Signal(s) : Signal #1: ECD1A.ch Signal #2: ECD2B.ch  
 Acq On : 04 Oct 2023 16:52  
 Operator : YP/AJ  
 Sample : AR1254CCC500  
 Misc :  
 ALS Vial : 6 Sample Multiplier: 1

**Instrument :**  
 ECD\_0  
**ClientSampleId :**  
 AR1254CCC500

**Manual Integrations**  
**APPROVED**

Reviewed By :Yogesh Patel 10/05/2023  
 Supervised By :Ankita Jodhani 10/05/2023

Integration File signal 1: autoint1.e  
 Integration File signal 2: autoint2.e  
 Quant Time: Oct 04 17:21:24 2023  
 Quant Method : Z:\pestpcbsrv\HPCHEM1\ECD\_0\methods\PO092723.M  
 Quant Title : GC EXTRACTABLES  
 QLast Update : Thu Sep 28 01:18:56 2023  
 Response via : Initial Calibration  
 Integrator: ChemStation

Volume Inj. : 2 µl  
 Signal #1 Phase : ZB-MR1 Signal #2 Phase: ZB-MR2  
 Signal #1 Info : 30Mx0.32mmx 0.50µ Signal #2 Info : 30M x 0.32mm x 0.25µm

Compound	RT#1	RT#2	Resp#1	Resp#2	ng/ml	ng/ml
-----						
System Monitoring Compounds						
1) SA Tetrachlo...	4.483	3.636	90965007	39036933	47.373	50.121
2) SA Decachlor...	10.297	8.642	58087908	27407906	47.854	51.157m
Target Compounds						
26) L6 AR-1254-1	6.516	5.521	27158107	19428491	429.964m	506.689m
27) L6 AR-1254-2	6.735	5.668	44850795	17289020	467.354m	502.182m
28) L6 AR-1254-3	7.103	6.073	47160616	26174780	501.215m	503.731
29) L6 AR-1254-4	7.389	6.302	30108984	14384493	517.120m	524.057
30) L6 AR-1254-5	7.809	6.720	32757248	21526863	469.001m	496.950
-----						

(f)=RT Delta > 1/2 Window (#)=Amounts differ by > 25% (m)=manual int.

Data Path : Z:\pestpcbsrv\HPCHEM1\ECD\_O\Data\PO100423\  
 Data File : PO098530.D  
 Signal(s) : Signal #1: ECD1A.ch Signal #2: ECD2B.ch  
 Acq On : 04 Oct 2023 16:52  
 Operator : YP/AJ  
 Sample : AR1254CCC500  
 Misc :  
 ALS Vial : 6 Sample Multiplier: 1

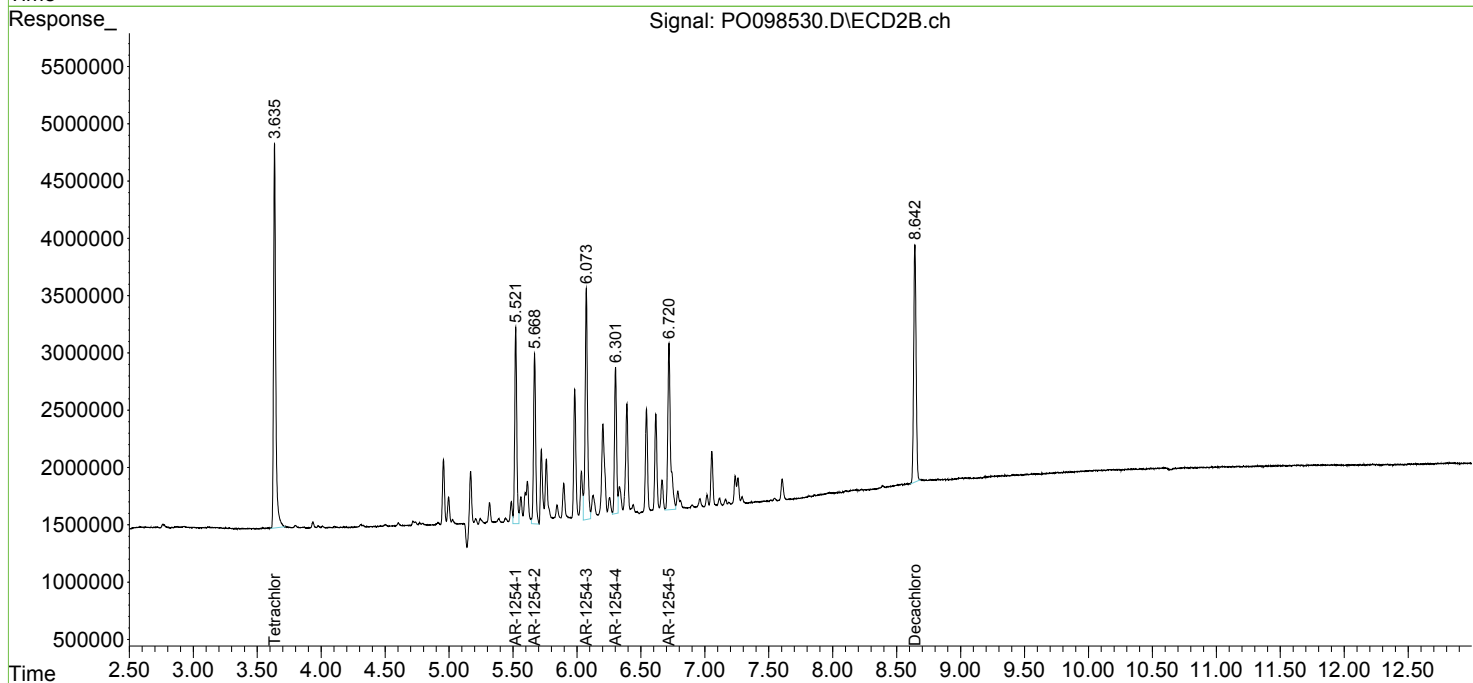
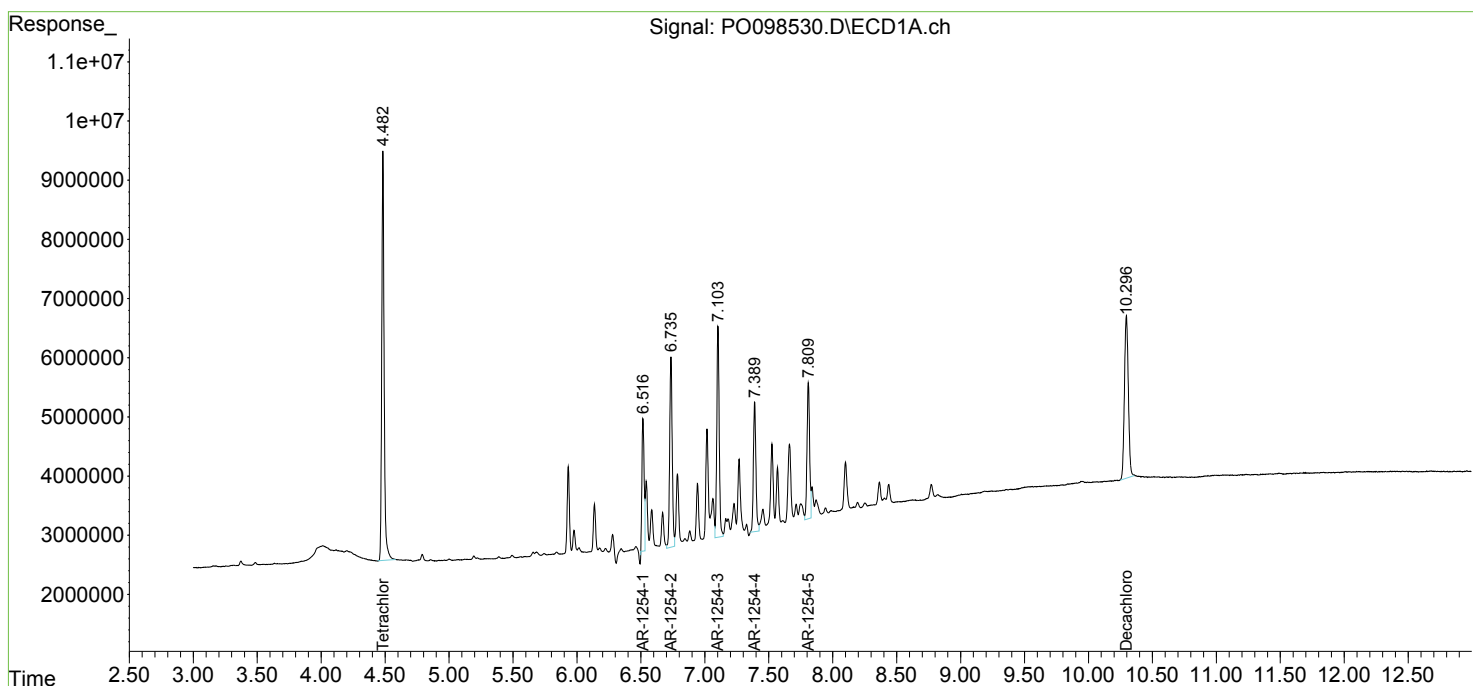
Instrument :  
 ECD\_O  
 ClientSampleId :  
 AR1254CCC500

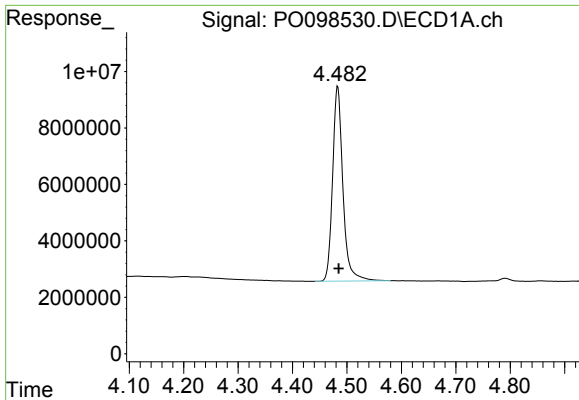
Manual Integrations  
 APPROVED

Reviewed By :Yogesh Patel 10/05/2023  
 Supervised By :Ankita Jodhani 10/05/2023

Integration File signal 1: autoint1.e  
 Integration File signal 2: autoint2.e  
 Quant Time: Oct 04 17:21:24 2023  
 Quant Method : Z:\pestpcbsrv\HPCHEM1\ECD\_O\methods\PO092723.M  
 Quant Title : GC EXTRACTABLES  
 QLast Update : Thu Sep 28 01:18:56 2023  
 Response via : Initial Calibration  
 Integrator: ChemStation

Volume Inj. : 2 µl  
 Signal #1 Phase : ZB-MR1 Signal #2 Phase: ZB-MR2  
 Signal #1 Info : 30Mx0.32mmx 0.50µ Signal #2 Info : 30M x 0.32mm x 0.25µm



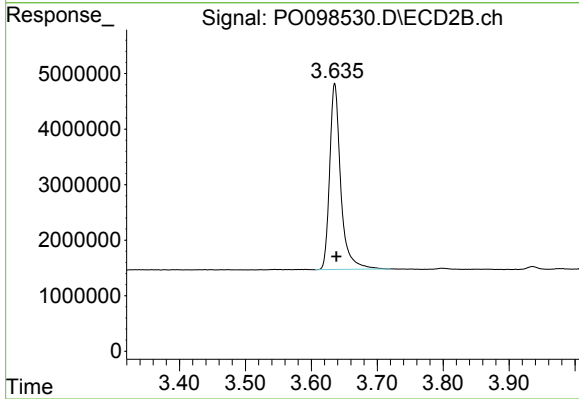


#1 Tetrachloro-m-xylene  
 R.T.: 4.483 min  
 Delta R.T.: -0.002 min  
 Response: 90965007  
 Conc: 47.37 ng/ml

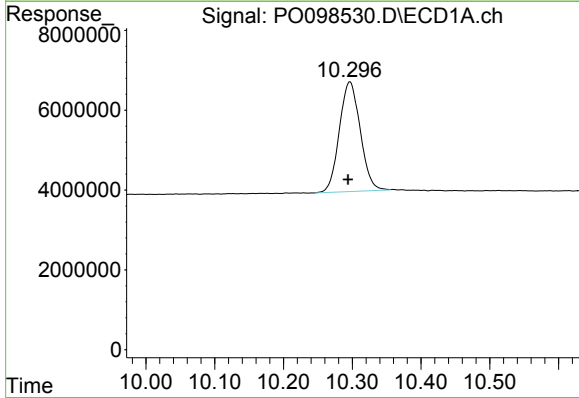
Instrument :  
 ECD\_O  
 ClientSampleId :  
 AR1254CCC500

Manual Integrations  
 APPROVED

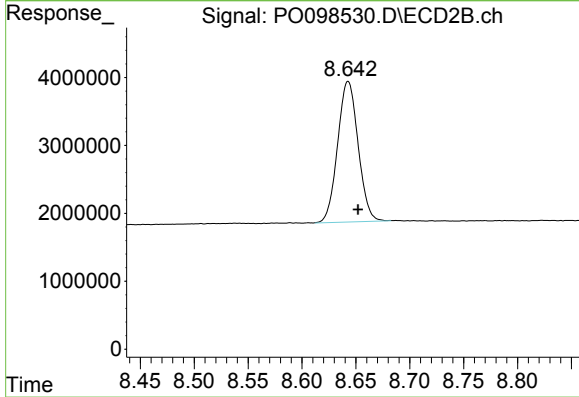
Reviewed By :Yogesh Patel 10/05/2023  
 Supervised By :Ankita Jodhani 10/05/2023



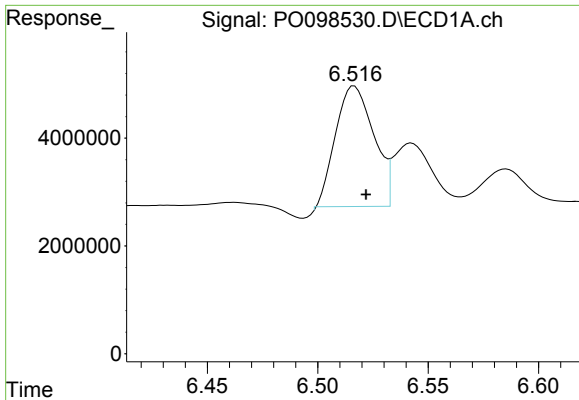
#1 Tetrachloro-m-xylene  
 R.T.: 3.636 min  
 Delta R.T.: -0.002 min  
 Response: 39036933  
 Conc: 50.12 ng/ml



#2 Decachlorobiphenyl  
 R.T.: 10.297 min  
 Delta R.T.: 0.003 min  
 Response: 58087908  
 Conc: 47.85 ng/ml



#2 Decachlorobiphenyl  
 R.T.: 8.642 min  
 Delta R.T.: -0.009 min  
 Response: 27407906  
 Conc: 51.16 ng/ml m



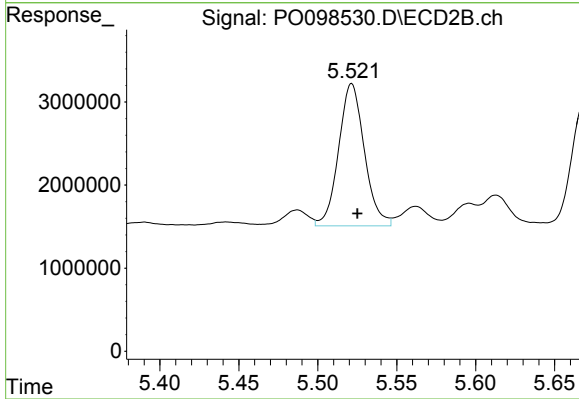
#26 AR-1254-1

R.T.: 6.516 min  
 Delta R.T.: -0.006 min  
 Response: 27158107  
 Conc: 429.96 ng/ml

Instrument :  
 ECD\_O  
 ClientSampleId :  
 AR1254CCC500

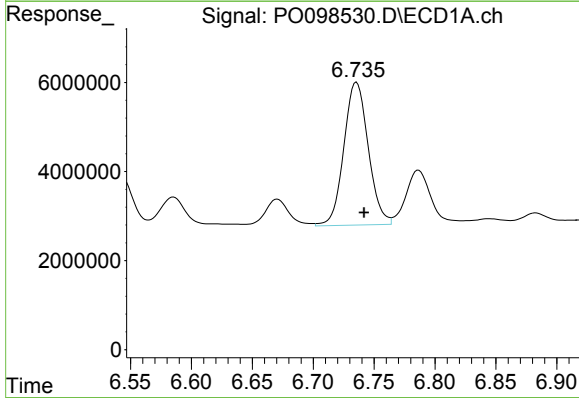
Manual Integrations  
 APPROVED

Reviewed By :Yogesh Patel 10/05/2023  
 Supervised By :Ankita Jodhani 10/05/2023



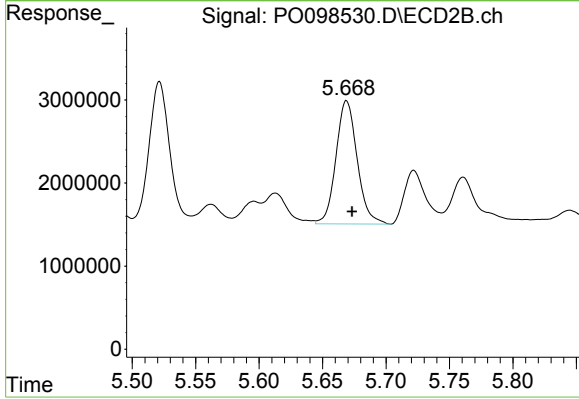
#26 AR-1254-1

R.T.: 5.521 min  
 Delta R.T.: -0.004 min  
 Response: 19428491  
 Conc: 506.69 ng/ml m



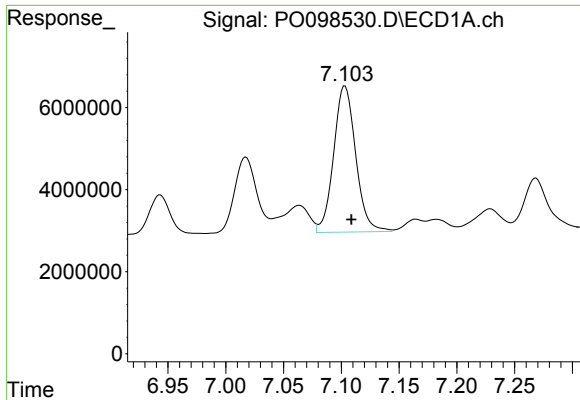
#27 AR-1254-2

R.T.: 6.735 min  
 Delta R.T.: -0.007 min  
 Response: 44850795  
 Conc: 467.35 ng/ml m



#27 AR-1254-2

R.T.: 5.668 min  
 Delta R.T.: -0.005 min  
 Response: 17289020  
 Conc: 502.18 ng/ml m



#28 AR-1254-3

R.T.: 7.103 min  
 Delta R.T.: -0.006 min  
 Response: 47160616  
 Conc: 501.21 ng/ml

Instrument :

ECD\_O

ClientSampleId :

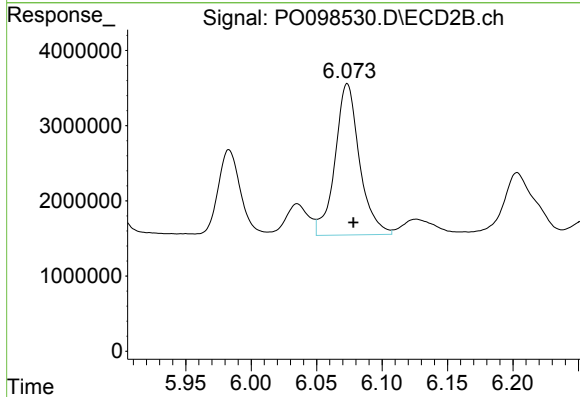
AR1254CCC500

Manual Integrations

APPROVED

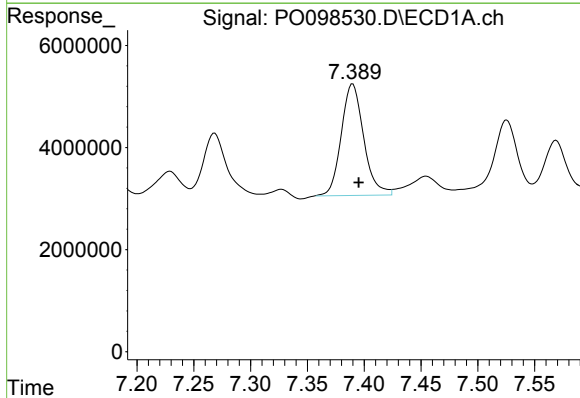
Reviewed By :Yogesh Patel 10/05/2023

Supervised By :Ankita Jodhani 10/05/2023



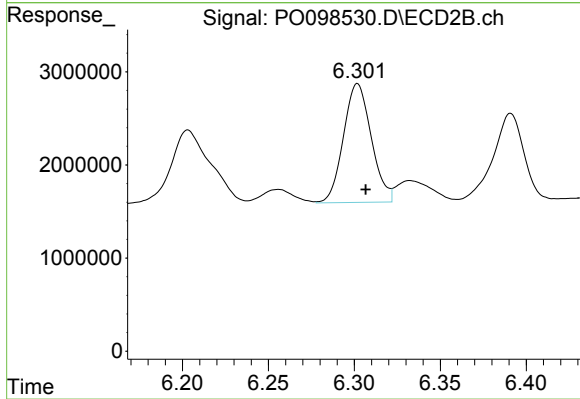
#28 AR-1254-3

R.T.: 6.073 min  
 Delta R.T.: -0.005 min  
 Response: 26174780  
 Conc: 503.73 ng/ml



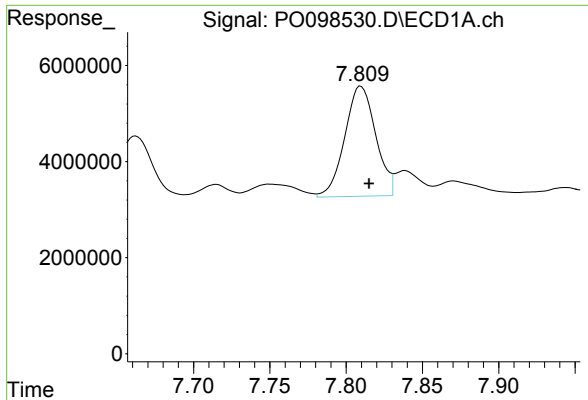
#29 AR-1254-4

R.T.: 7.389 min  
 Delta R.T.: -0.006 min  
 Response: 30108984  
 Conc: 517.12 ng/ml m



#29 AR-1254-4

R.T.: 6.302 min  
 Delta R.T.: -0.005 min  
 Response: 14384493  
 Conc: 524.06 ng/ml



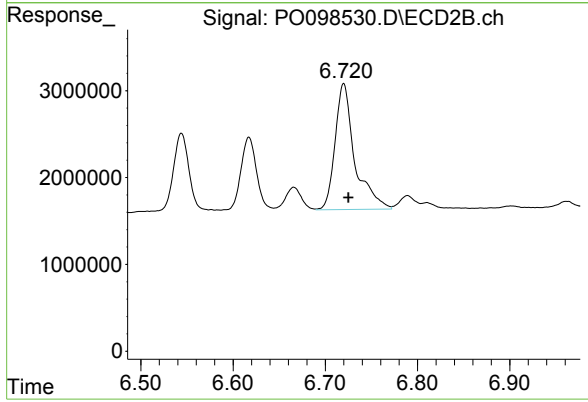
#30 AR-1254-5

R.T.: 7.809 min  
Delta R.T.: -0.006 min  
Response: 32757248  
Conc: 469.00 ng/ml

Instrument :  
ECD\_O  
ClientSampleId :  
AR1254CCC500

Manual Integrations  
APPROVED

Reviewed By :Yogesh Patel 10/05/2023  
Supervised By :Ankita Jodhani 10/05/2023



#30 AR-1254-5

R.T.: 6.720 min  
Delta R.T.: -0.005 min  
Response: 21526863  
Conc: 496.95 ng/ml