

Data Path : Z:\pestpcbsrv\HPCHEM1\ECD\_0\Data\PO100423\  
 Data File : PO098531.D  
 Signal(s) : Signal #1: ECD1A.ch Signal #2: ECD2B.ch  
 Acq On : 04 Oct 2023 17:09  
 Operator : YP/AJ  
 Sample : I.BLK  
 Misc :  
 ALS Vial : 2 Sample Multiplier: 1

**Instrument :**  
 ECD\_0  
**ClientSampleId :**  
 I.BLK

**Manual Integrations**  
**APPROVED**

Reviewed By :Yogesh Patel 10/05/2023  
 Supervised By :Ankita Jodhani 10/05/2023

Integration File signal 1: autoint1.e  
 Integration File signal 2: autoint2.e  
 Quant Time: Oct 04 17:24:46 2023  
 Quant Method : Z:\pestpcbsrv\HPCHEM1\ECD\_0\methods\PO092723.M  
 Quant Title : GC EXTRACTABLES  
 QLast Update : Thu Sep 28 01:18:56 2023  
 Response via : Initial Calibration  
 Integrator: ChemStation

Volume Inj. : 2 µl  
 Signal #1 Phase : ZB-MR1 Signal #2 Phase: ZB-MR2  
 Signal #1 Info : 30Mx0.32mmx 0.50µ Signal #2 Info : 30M x 0.32mm x 0.25µm

Compound	RT#1	RT#2	Resp#1	Resp#2	ng/ml	ng/ml
-----						
System Monitoring Compounds						
1) SA Tetrachlo...	4.481	3.634	34551822	14784546	17.994	18.982
2) SA Decachlor...	10.293	8.640	22696693	11073184	18.698	20.668m

Target Compounds

(f)=RT Delta > 1/2 Window (#)=Amounts differ by > 25% (m)=manual int.

Data Path : Z:\pestpcbsrv\HPCHEM1\ECD\_0\Data\PO100423\  
 Data File : PO098531.D  
 Signal(s) : Signal #1: ECD1A.ch Signal #2: ECD2B.ch  
 Acq On : 04 Oct 2023 17:09  
 Operator : YP/AJ  
 Sample : I.BLK  
 Misc :  
 ALS Vial : 2 Sample Multiplier: 1

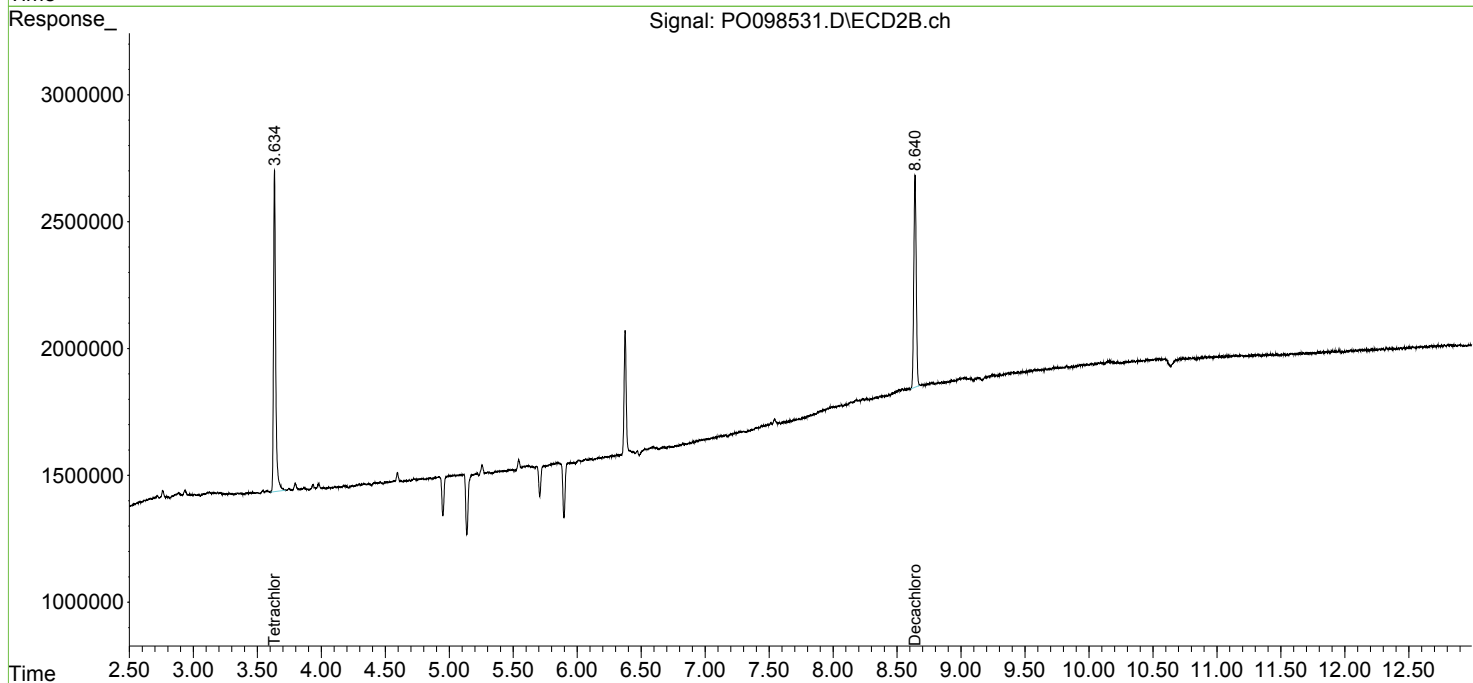
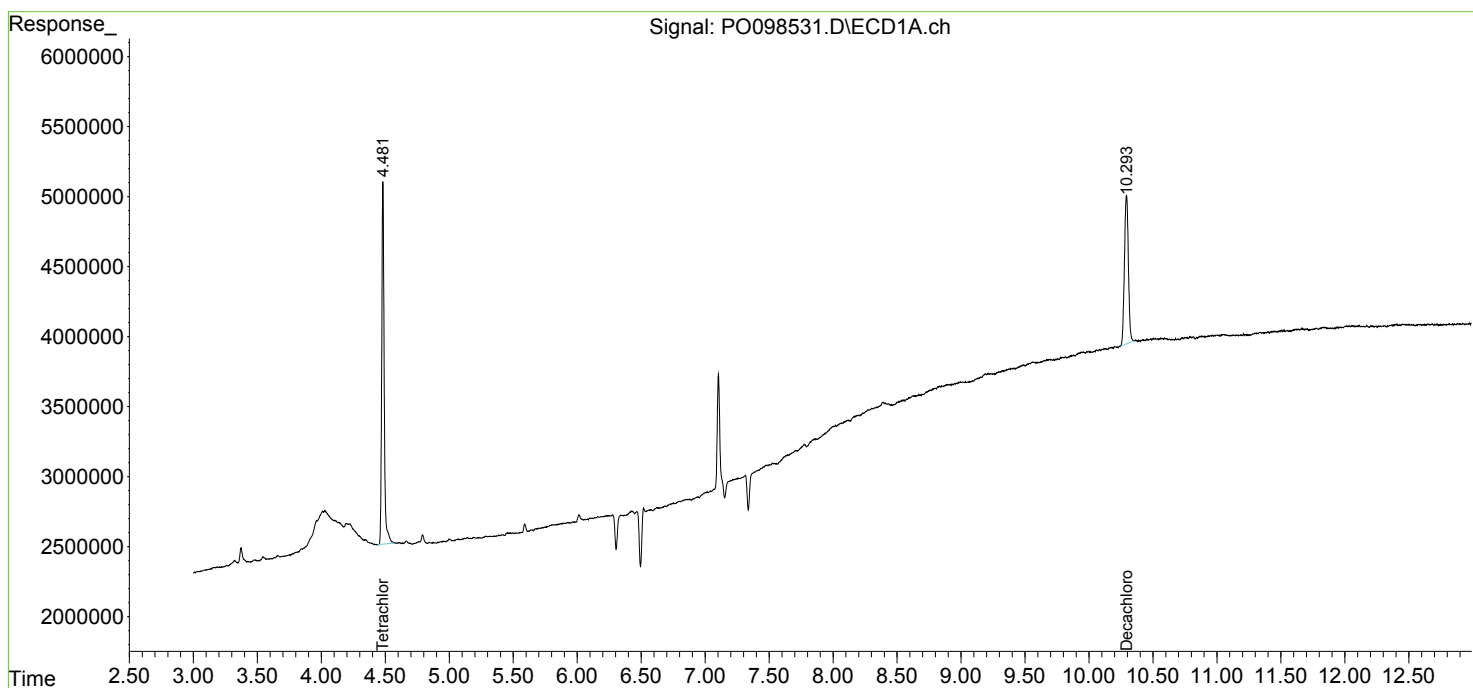
Instrument :  
 ECD\_0  
 ClientSampleId :  
 I.BLK

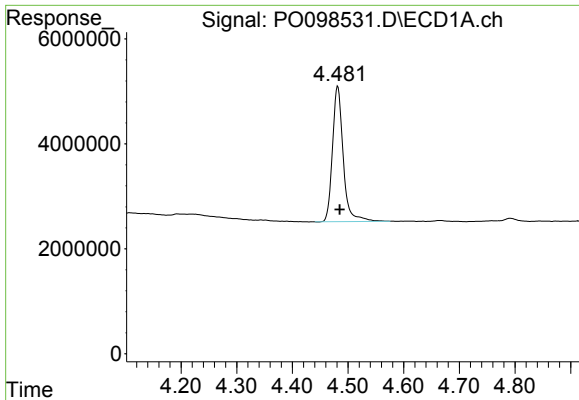
Manual Integrations  
 APPROVED

Reviewed By :Yogesh Patel 10/05/2023  
 Supervised By :Ankita Jodhani 10/05/2023

Integration File signal 1: autoint1.e  
 Integration File signal 2: autoint2.e  
 Quant Time: Oct 04 17:24:46 2023  
 Quant Method : Z:\pestpcbsrv\HPCHEM1\ECD\_0\methods\PO092723.M  
 Quant Title : GC EXTRACTABLES  
 QLast Update : Thu Sep 28 01:18:56 2023  
 Response via : Initial Calibration  
 Integrator: ChemStation

Volume Inj. : 2 µl  
 Signal #1 Phase : ZB-MR1 Signal #2 Phase: ZB-MR2  
 Signal #1 Info : 30Mx0.32mmx 0.50µ Signal #2 Info : 30M x 0.32mm x 0.25µm





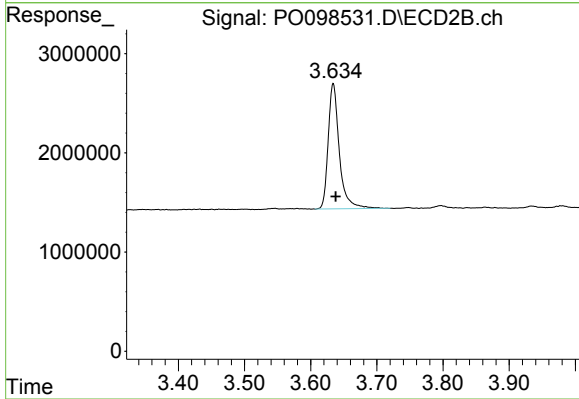
#1 Tetrachloro-m-xylene

R.T.: 4.481 min  
 Delta R.T.: -0.004 min  
 Response: 34551822  
 Conc: 17.99 ng/ml

Instrument :  
 ECD\_O  
 ClientSampleId :  
 I.BLK

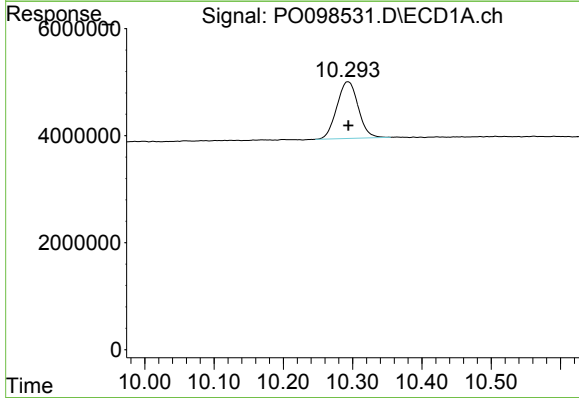
Manual Integrations  
 APPROVED

Reviewed By :Yogesh Patel 10/05/2023  
 Supervised By :Ankita Jodhani 10/05/2023



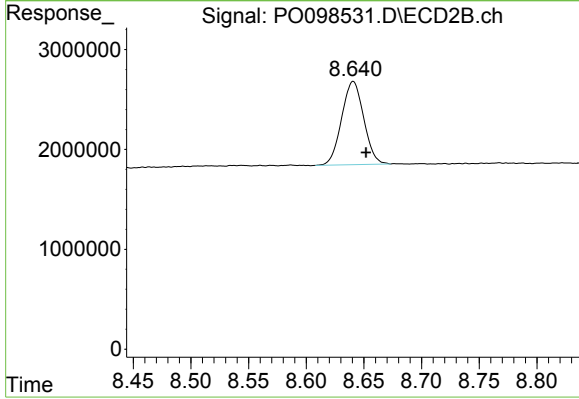
#1 Tetrachloro-m-xylene

R.T.: 3.634 min  
 Delta R.T.: -0.004 min  
 Response: 14784546  
 Conc: 18.98 ng/ml



#2 Decachlorobiphenyl

R.T.: 10.293 min  
 Delta R.T.: 0.000 min  
 Response: 22696693  
 Conc: 18.70 ng/ml



#2 Decachlorobiphenyl

R.T.: 8.640 min  
 Delta R.T.: -0.012 min  
 Response: 11073184  
 Conc: 20.67 ng/ml m