

Data Path : Z:\pestpcbsrv\HPCHEM1\ECD\_0\Data\PO100520\  
 Data File : PO071983.D  
 Signal(s) : Signal #1: ECD1A.CH Signal #2: ECD2B.CH  
 Acq On : 05 Oct 2020 15:53  
 Operator : DD\AJ  
 Sample : AR1254CCC500  
 Misc :  
 ALS Vial : 4 Sample Multiplier: 1

Instrument :  
 ECD\_0  
 ClientSampleId :  
 AR1254CCC500

Integration File signal 1: autoint1.e  
 Integration File signal 2: autoint2.e  
 Quant Time: Oct 06 01:08:47 2020  
 Quant Method : Z:\pestpcbsrv\HPCHEM1\ECD\_0\methods\PO100320.M  
 Quant Title : GC EXTRACTABLES  
 QLast Update : Mon Oct 05 11:48:20 2020  
 Response via : Initial Calibration  
 Integrator: ChemStation 6890 Scale Mode: Small noise peaks clipped

Volume Inj. : 2 µl  
 Signal #1 Phase : ZB-MR1 Signal #2 Phase: ZB-MR2  
 Signal #1 Info : 30Mx0.32mmx 0.50µ Signal #2 Info : 30M x 0.32mm x 0.25µm

Compound	RT#1	RT#2	Resp#1	Resp#2	ng/ml	ng/ml
-----						
System Monitoring Compounds						
1) SA Tetrachlo...	4.326	3.510	3670514	1788525	51.103	47.750
2) SA Decachlor...	9.932	8.682	4895671	2489860	44.463	43.774
Target Compounds						
26) L6 AR-1254-1	6.519	5.585	1822967	1246470	521.779	521.571
27) L6 AR-1254-2	6.746	5.746	3003449	1097716	545.533	513.199
28) L6 AR-1254-3	7.124	6.154	3147914	1764815	545.077	519.804
29) L6 AR-1254-4	7.418	6.395	3012146	1244948	517.022	512.710
30) L6 AR-1254-5	7.839	6.816	2885011	1719896	536.062	525.623
-----						

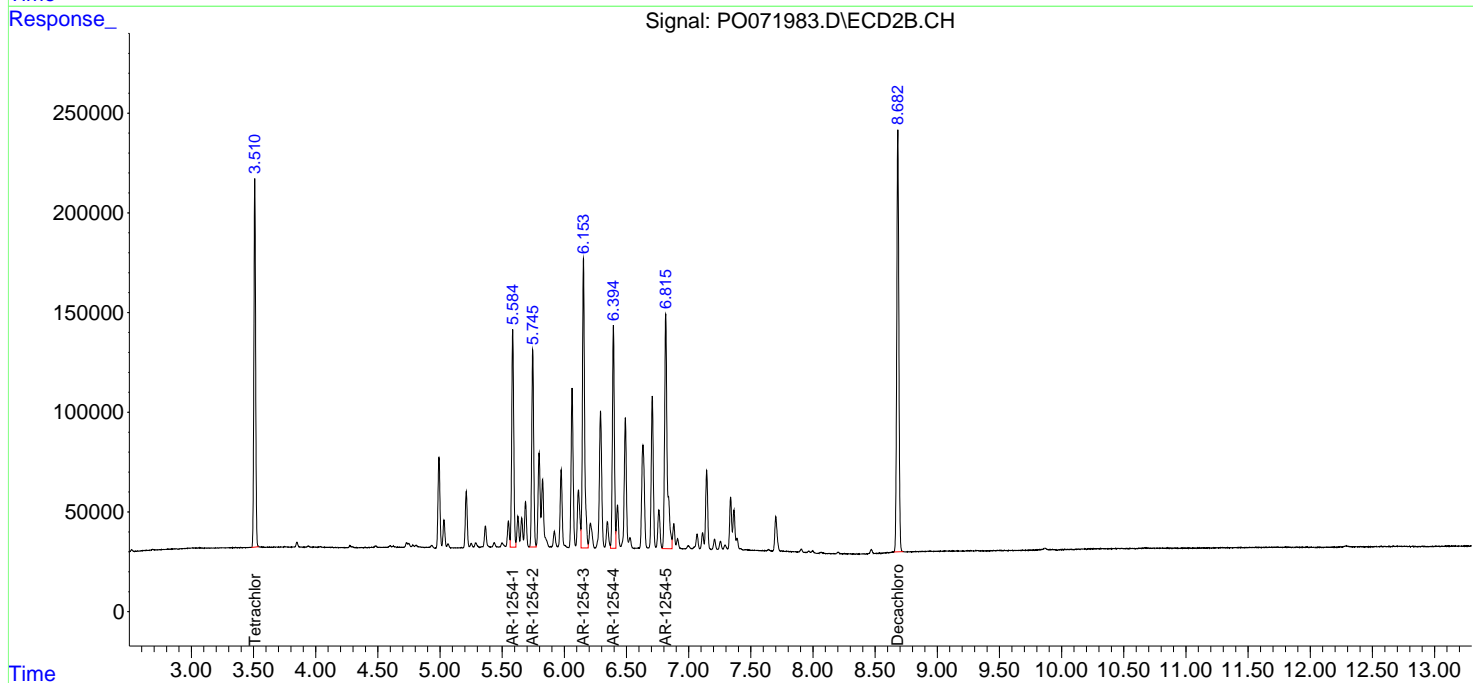
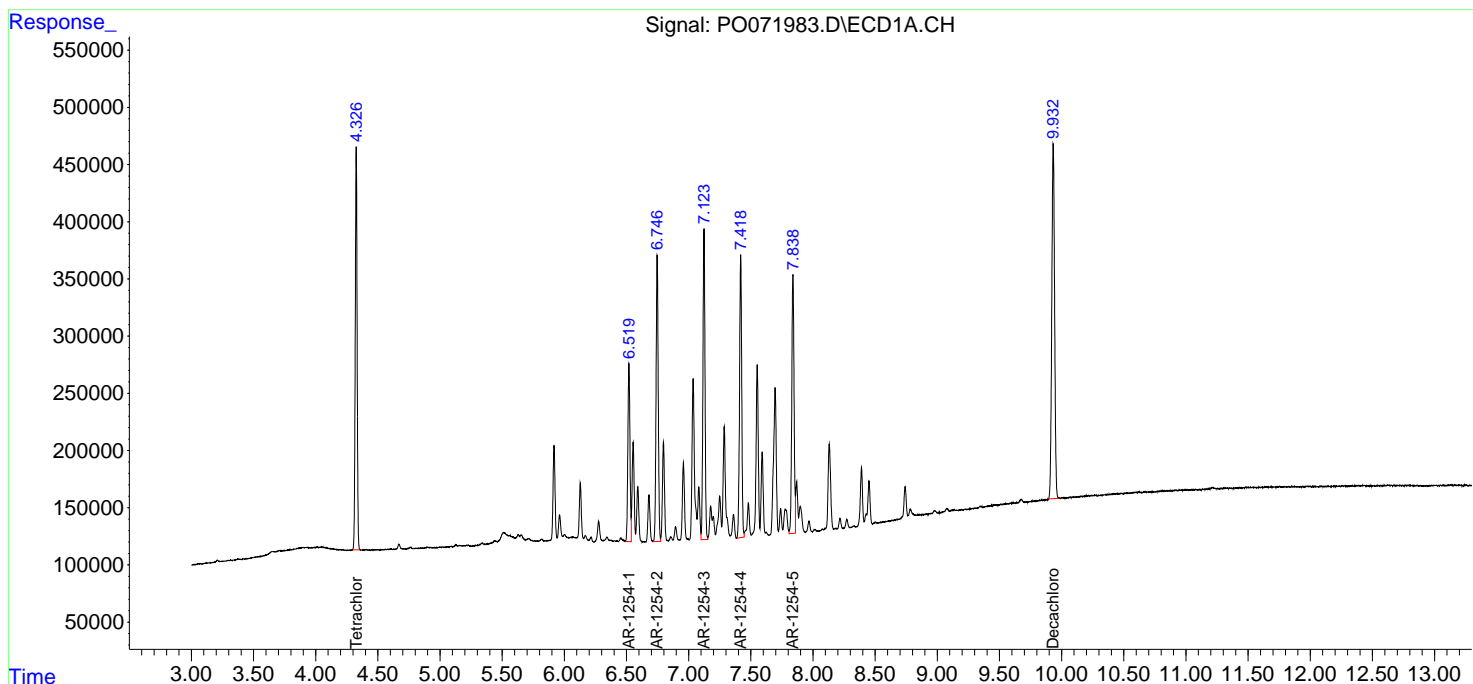
(f)=RT Delta > 1/2 Window (#)=Amounts differ by > 25% (m)=manual int.

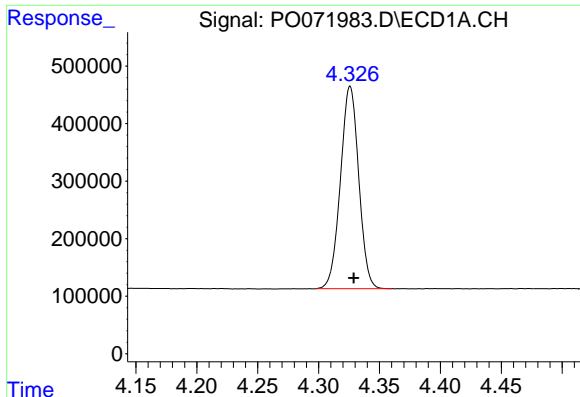
Data Path : Z:\pestpcbsrv\HPCHEM1\ECD\_O\Data\PO100520\  
 Data File : PO071983.D  
 Signal(s) : Signal #1: ECD1A.CH Signal #2: ECD2B.CH  
 Acq On : 05 Oct 2020 15:53  
 Operator : DD\AJ  
 Sample : AR1254CCC500  
 Misc :  
 ALS Vial : 4 Sample Multiplier: 1

Instrument :  
 ECD\_O  
 ClientSampleId :  
 AR1254CCC500

Integration File signal 1: autoint1.e  
 Integration File signal 2: autoint2.e  
 Quant Time: Oct 06 01:08:47 2020  
 Quant Method : Z:\pestpcbsrv\HPCHEM1\ECD\_O\methods\PO100320.M  
 Quant Title : GC EXTRACTABLES  
 QLast Update : Mon Oct 05 11:48:20 2020  
 Response via : Initial Calibration  
 Integrator: ChemStation 6890 Scale Mode: Small noise peaks clipped

Volume Inj. : 2 µl  
 Signal #1 Phase : ZB-MR1 Signal #2 Phase: ZB-MR2  
 Signal #1 Info : 30Mx0.32mmx 0.50µm Signal #2 Info : 30M x 0.32mm x 0.25µm

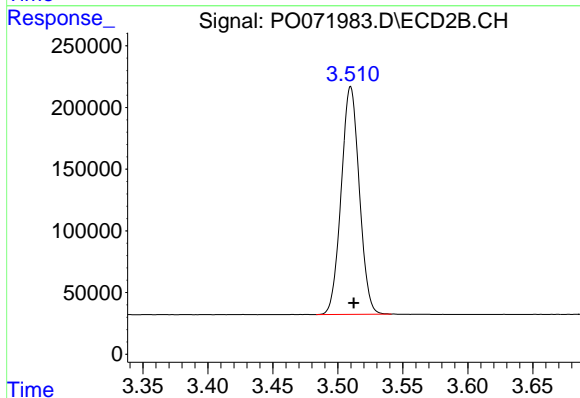




#1 Tetrachloro-m-xylene

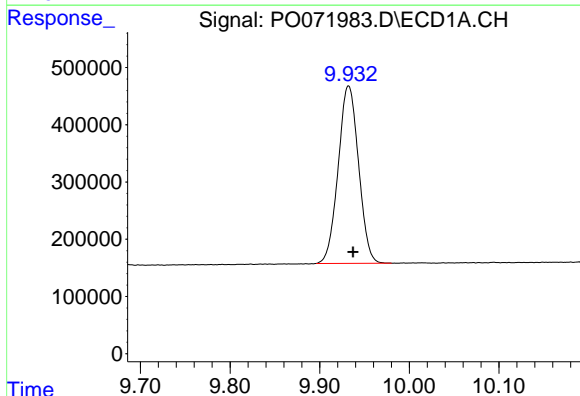
R.T.: 4.326 min  
 Delta R.T.: -0.003 min  
 Response: 3670514  
 Conc: 51.10 ng/ml

Instrument :  
 ECD\_O  
 ClientSampleId :  
 AR1254CCC500



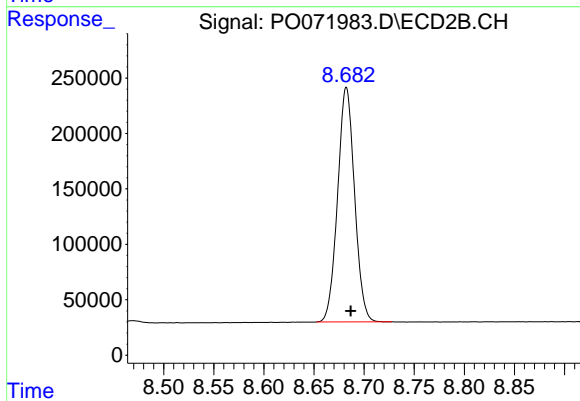
#1 Tetrachloro-m-xylene

R.T.: 3.510 min  
 Delta R.T.: -0.002 min  
 Response: 1788525  
 Conc: 47.75 ng/ml



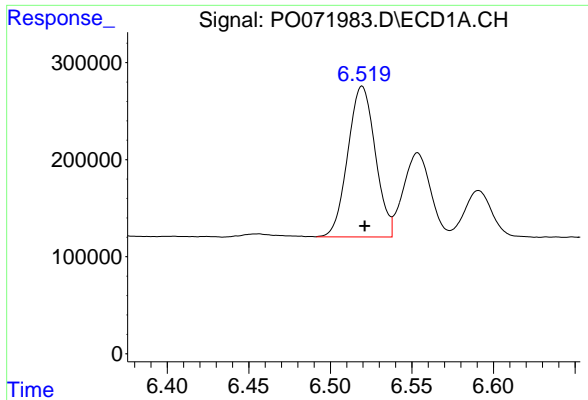
#2 Decachlorobiphenyl

R.T.: 9.932 min  
 Delta R.T.: -0.005 min  
 Response: 4895671  
 Conc: 44.46 ng/ml



#2 Decachlorobiphenyl

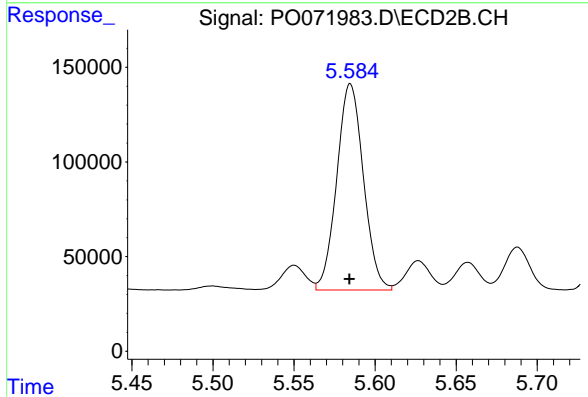
R.T.: 8.682 min  
 Delta R.T.: -0.004 min  
 Response: 2489860  
 Conc: 43.77 ng/ml



#26 AR-1254-1

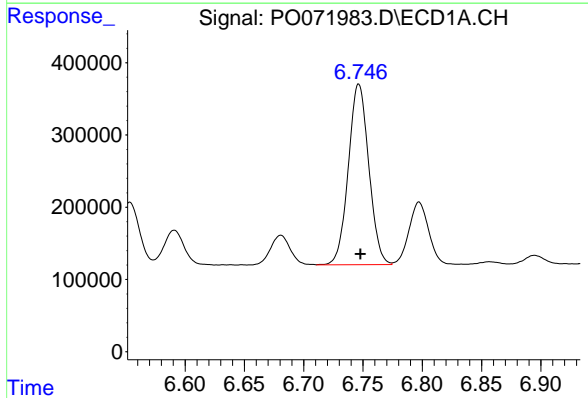
R.T.: 6.519 min  
 Delta R.T.: -0.002 min  
 Response: 1822967  
 Conc: 521.78 ng/ml

Instrument :  
 ECD\_O  
 ClientSampleId :  
 AR1254CCC500



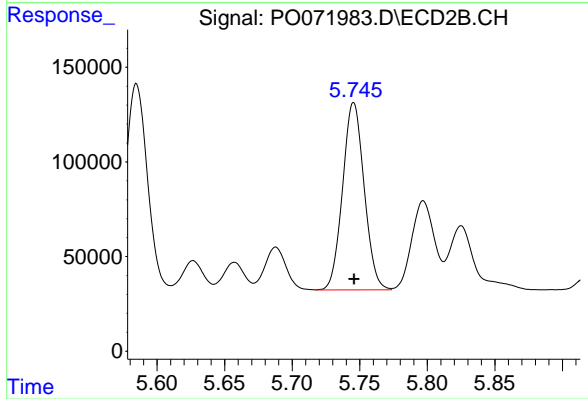
#26 AR-1254-1

R.T.: 5.585 min  
 Delta R.T.: 0.000 min  
 Response: 1246470  
 Conc: 521.57 ng/ml



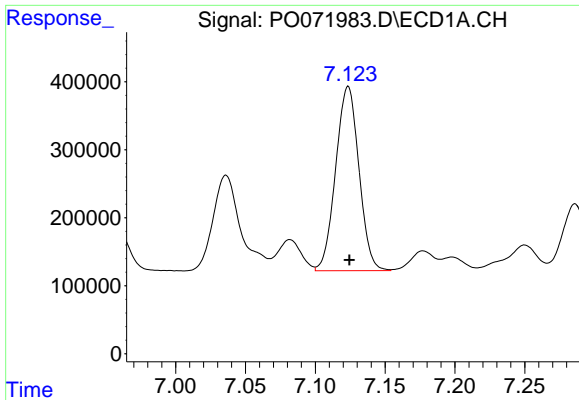
#27 AR-1254-2

R.T.: 6.746 min  
 Delta R.T.: -0.001 min  
 Response: 3003449  
 Conc: 545.53 ng/ml



#27 AR-1254-2

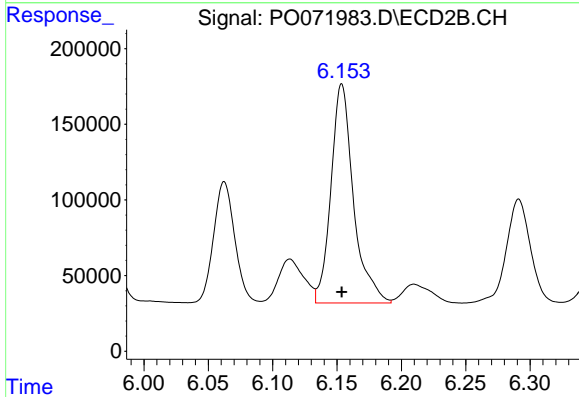
R.T.: 5.746 min  
 Delta R.T.: 0.000 min  
 Response: 1097716  
 Conc: 513.20 ng/ml



#28 AR-1254-3

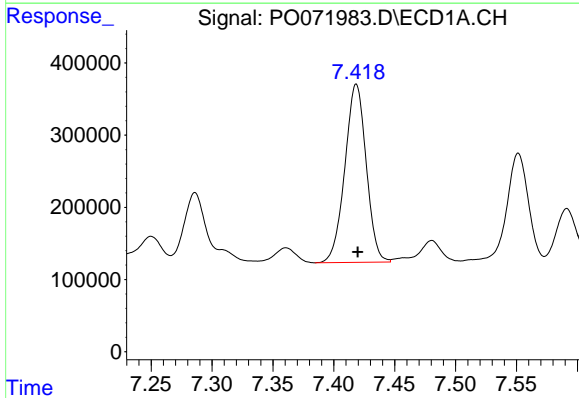
R.T.: 7.124 min  
 Delta R.T.: 0.000 min  
 Response: 3147914  
 Conc: 545.08 ng/ml

Instrument :  
 ECD\_O  
 ClientSampled :  
 AR1254CCC500



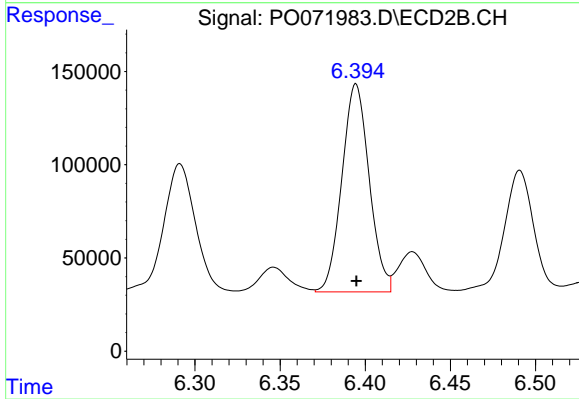
#28 AR-1254-3

R.T.: 6.154 min  
 Delta R.T.: 0.000 min  
 Response: 1764815  
 Conc: 519.80 ng/ml



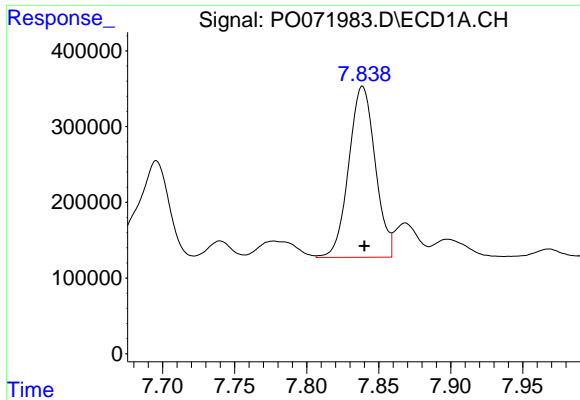
#29 AR-1254-4

R.T.: 7.418 min  
 Delta R.T.: -0.001 min  
 Response: 3012146  
 Conc: 517.02 ng/ml



#29 AR-1254-4

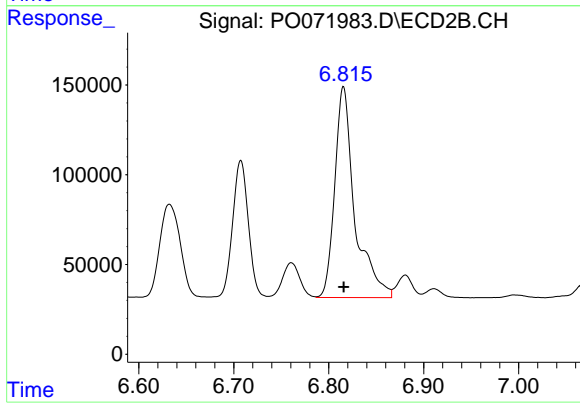
R.T.: 6.395 min  
 Delta R.T.: 0.000 min  
 Response: 1244948  
 Conc: 512.71 ng/ml



#30 AR-1254-5

R.T.: 7.839 min  
Delta R.T.: -0.001 min  
Response: 2885011  
Conc: 536.06 ng/ml

Instrument :  
ECD\_O  
ClientSampleId :  
AR1254CCC500



#30 AR-1254-5

R.T.: 6.816 min  
Delta R.T.: 0.000 min  
Response: 1719896  
Conc: 525.62 ng/ml