

Data Path : Z:\pestpcbsrv\HPCHEM1\ECD\_0\Data\PO100520\  
 Data File : PO071997.D  
 Signal(s) : Signal #1: ECD1A.CH Signal #2: ECD2B.CH  
 Acq On : 05 Oct 2020 19:52  
 Operator : DD\AJ  
 Sample : L4242-03  
 Misc :  
 ALS Vial : 28 Sample Multiplier: 1

Instrument :  
 ECD\_0  
 ClientSampleId :  
 PAV-B24-100120-0-10

Integration File signal 1: autoint1.e  
 Integration File signal 2: autoint2.e  
 Quant Time: Oct 06 01:13:57 2020  
 Quant Method : Z:\pestpcbsrv\HPCHEM1\ECD\_0\methods\PO100320.M  
 Quant Title : GC EXTRACTABLES  
 QLast Update : Mon Oct 05 11:48:20 2020  
 Response via : Initial Calibration  
 Integrator: ChemStation 6890 Scale Mode: Small noise peaks clipped

Volume Inj. : 2 µl  
 Signal #1 Phase : ZB-MR1 Signal #2 Phase: ZB-MR2  
 Signal #1 Info : 30Mx0.32mmx 0.50µ Signal #2 Info : 30M x 0.32mm x 0.25µm

Compound	RT#1	RT#2	Resp#1	Resp#2	ng/ml	ng/ml
-----						
System Monitoring Compounds						
1) SA Tetrachlo...	4.327	3.510	1561949	833075	21.746	22.241
2) SA Decachlor...	9.934	8.684	2084583	992895	18.932	17.456

Target Compounds

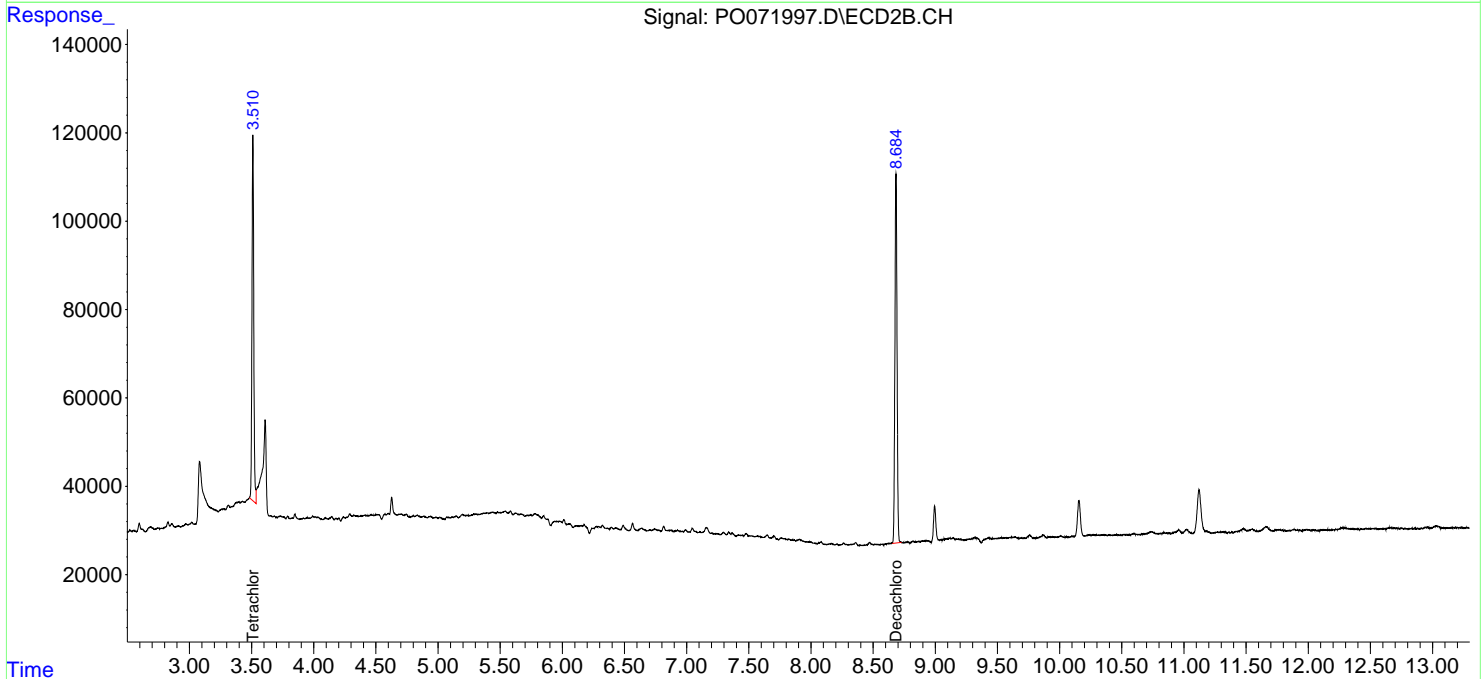
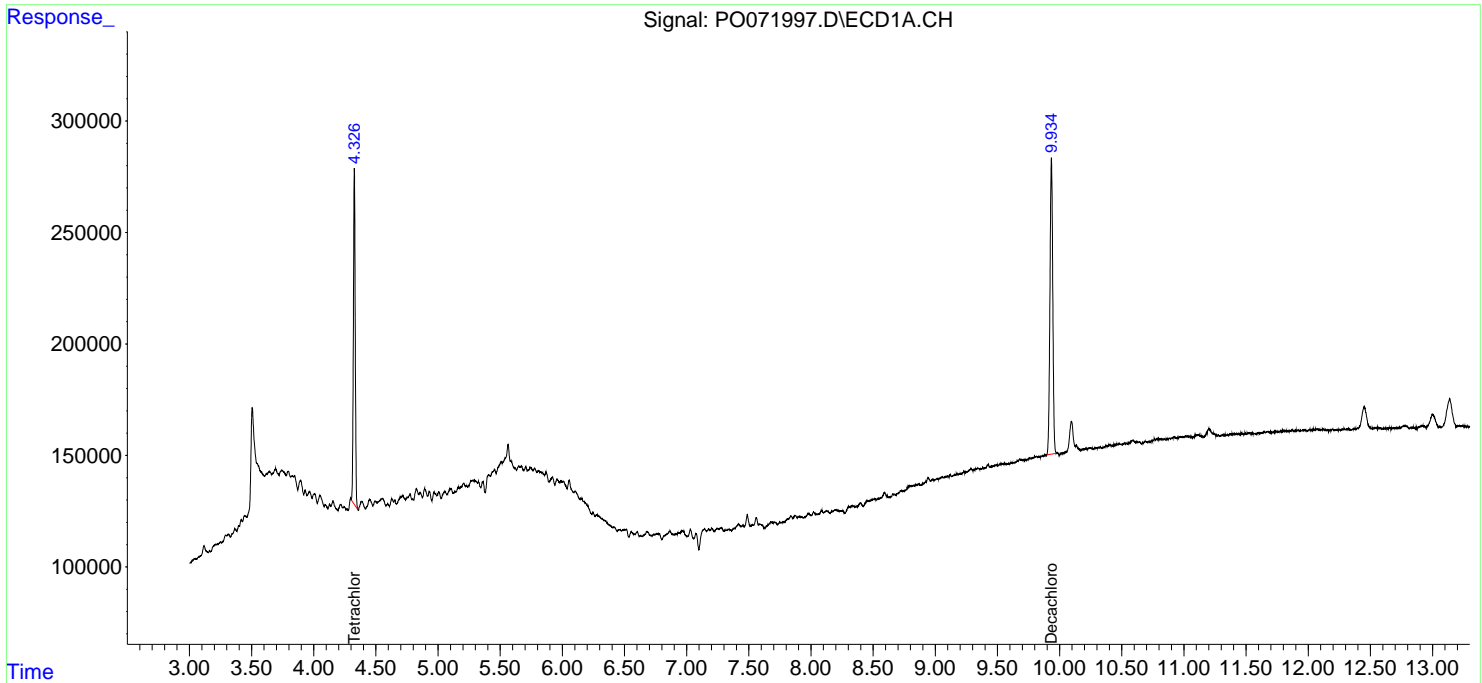
(f)=RT Delta > 1/2 Window (#)=Amounts differ by > 25% (m)=manual int.

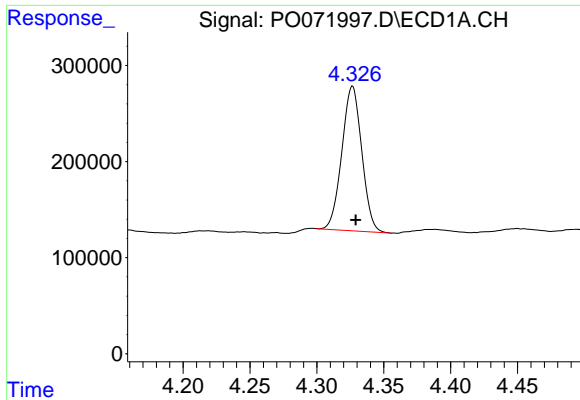
Data Path : Z:\pestpcbsrv\HPCHEM1\ECD\_O\Data\PO100520\  
 Data File : PO071997.D  
 Signal(s) : Signal #1: ECD1A.CH Signal #2: ECD2B.CH  
 Acq On : 05 Oct 2020 19:52  
 Operator : DD\AJ  
 Sample : L4242-03  
 Misc :  
 ALS Vial : 28 Sample Multiplier: 1

**Instrument :**  
 ECD\_O  
**ClientSampleId :**  
 PAV-B24-100120-0-10

Integration File signal 1: autoint1.e  
 Integration File signal 2: autoint2.e  
 Quant Time: Oct 06 01:13:57 2020  
 Quant Method : Z:\pestpcbsrv\HPCHEM1\ECD\_O\methods\PO100320.M  
 Quant Title : GC EXTRACTABLES  
 QLast Update : Mon Oct 05 11:48:20 2020  
 Response via : Initial Calibration  
 Integrator: ChemStation 6890 Scale Mode: Small noise peaks clipped

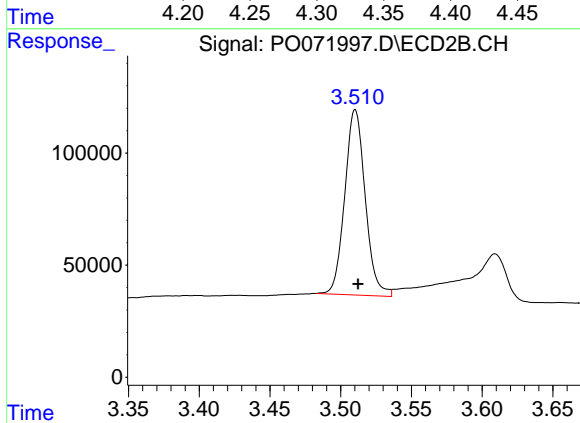
Volume Inj. : 2 µl  
 Signal #1 Phase : ZB-MR1 Signal #2 Phase: ZB-MR2  
 Signal #1 Info : 30Mx0.32mmx 0.50µ Signal #2 Info : 30M x 0.32mm x 0.25µm



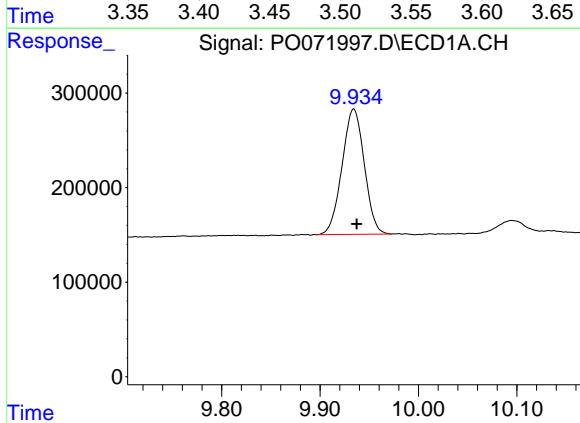


#1 Tetrachloro-m-xylene  
 R.T.: 4.327 min  
 Delta R.T.: -0.002 min  
 Response: 1561949  
 Conc: 21.75 ng/ml

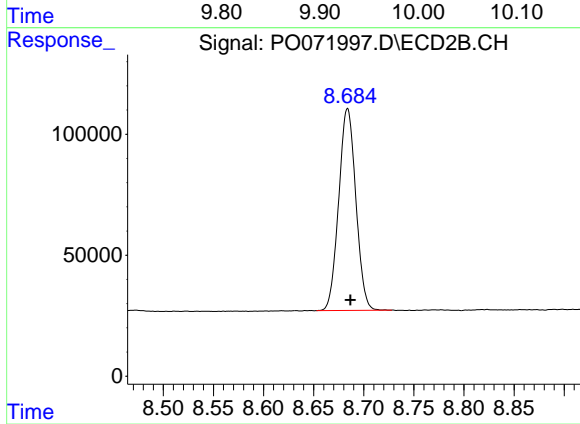
Instrument :  
 ECD\_O  
 ClientSampleId :  
 PAV-B24-100120-0-10



#1 Tetrachloro-m-xylene  
 R.T.: 3.510 min  
 Delta R.T.: -0.002 min  
 Response: 833075  
 Conc: 22.24 ng/ml



#2 Decachlorobiphenyl  
 R.T.: 9.934 min  
 Delta R.T.: -0.003 min  
 Response: 2084583  
 Conc: 18.93 ng/ml



#2 Decachlorobiphenyl  
 R.T.: 8.684 min  
 Delta R.T.: -0.003 min  
 Response: 992895  
 Conc: 17.46 ng/ml