

Data Path : Z:\pestpcbsrv\HPCHEM1\ECD_0\Data\PO100520\
 Data File : PO071998.D
 Signal(s) : Signal #1: ECD1A.CH Signal #2: ECD2B.CH
 Acq On : 05 Oct 2020 20:09
 Operator : DD\AJ
 Sample : L4242-05
 Misc :
 ALS Vial : 29 Sample Multiplier: 1

Instrument :
 ECD_0
 ClientSampleId :
 PAV-B24-100120-10-18

Integration File signal 1: autoint1.e
 Integration File signal 2: autoint2.e
 Quant Time: Oct 06 01:14:17 2020
 Quant Method : Z:\pestpcbsrv\HPCHEM1\ECD_0\methods\PO100320.M
 Quant Title : GC EXTRACTABLES
 QLast Update : Mon Oct 05 11:48:20 2020
 Response via : Initial Calibration
 Integrator: ChemStation 6890 Scale Mode: Small noise peaks clipped

Volume Inj. : 2 µl
 Signal #1 Phase : ZB-MR1 Signal #2 Phase: ZB-MR2
 Signal #1 Info : 30Mx0.32mmx 0.50µ Signal #2 Info : 30M x 0.32mm x 0.25µm

Compound	RT#1	RT#2	Resp#1	Resp#2	ng/ml	ng/ml

System Monitoring Compounds						
1) SA Tetrachlo...	4.328	3.512	2593646	1172685	36.110	31.308
2) SA Decachlor...	9.935	8.685	1931992	863106	17.547	15.174

Target Compounds

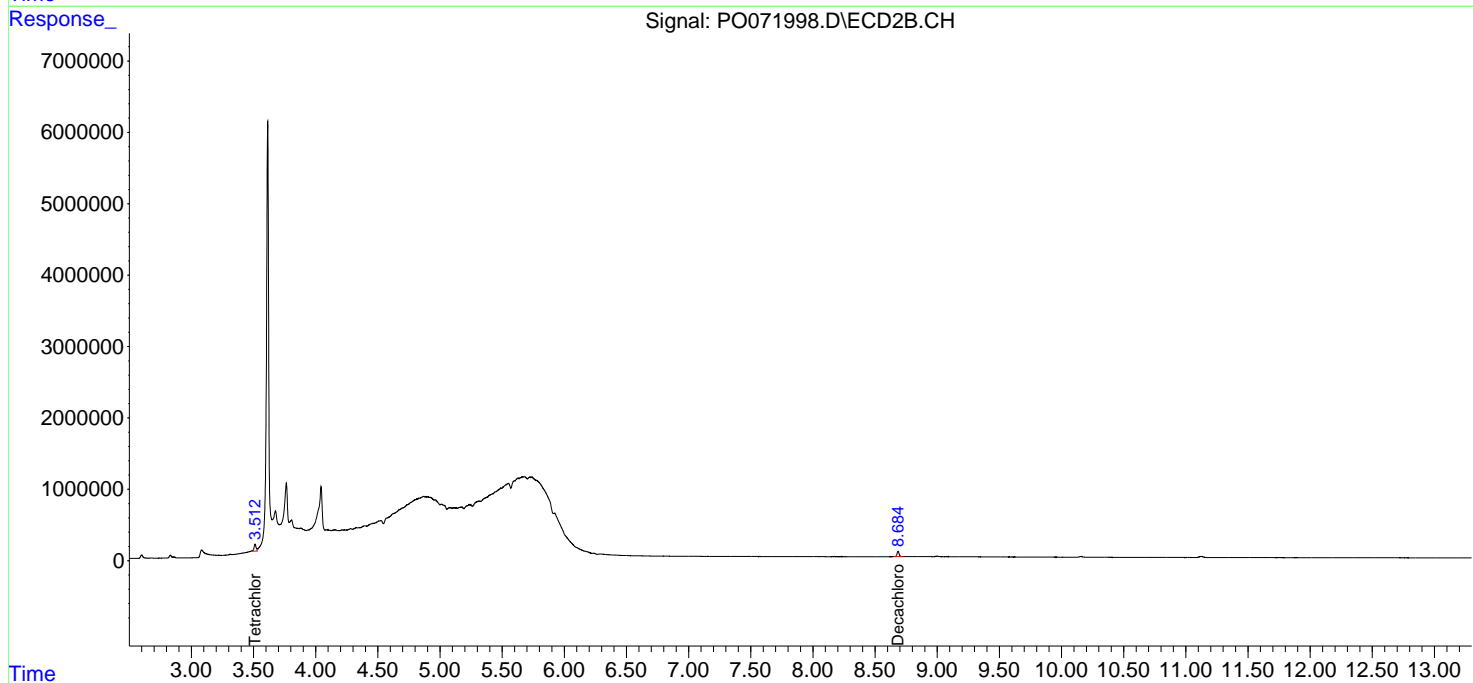
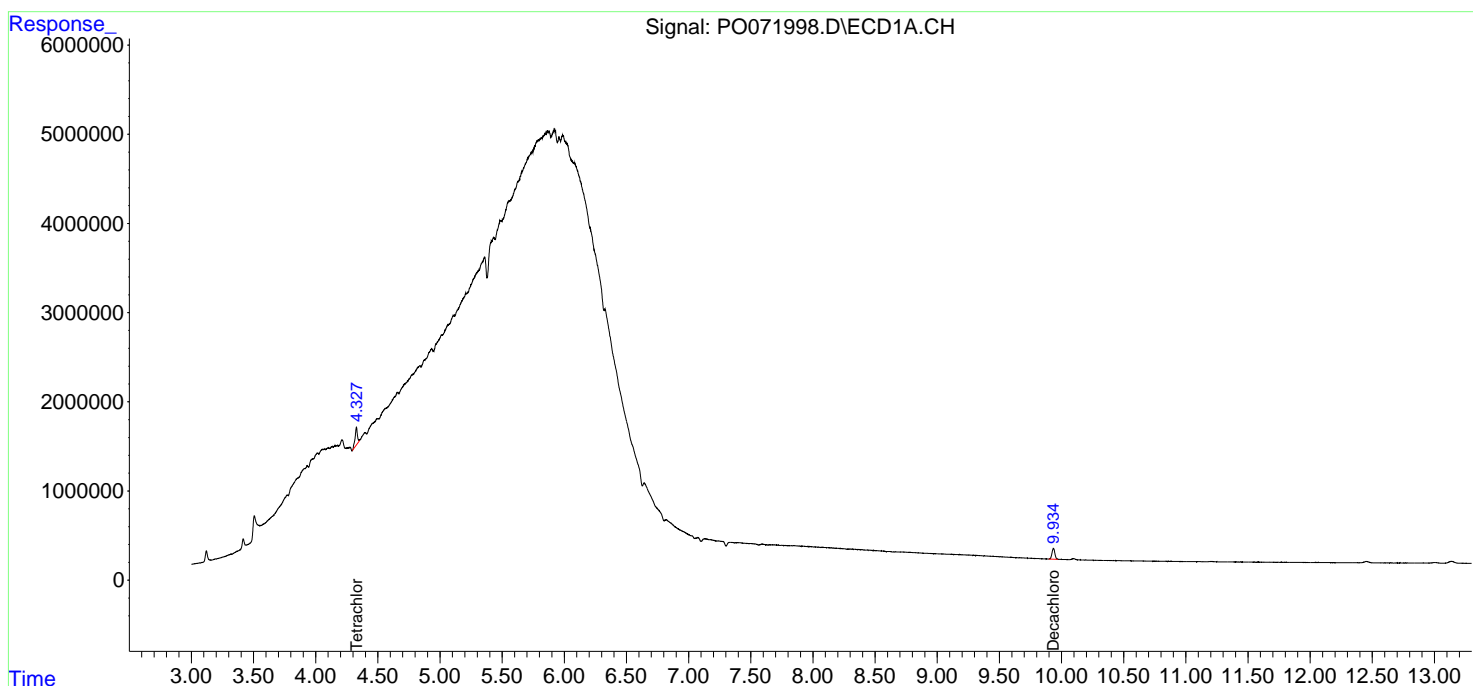
(f)=RT Delta > 1/2 Window (#)=Amounts differ by > 25% (m)=manual int.

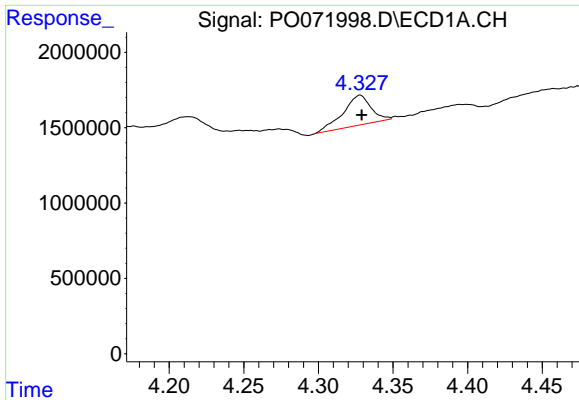
Data Path : Z:\pestpcbsrv\HPCHEM1\ECD_O\Data\PO100520\
 Data File : PO071998.D
 Signal(s) : Signal #1: ECD1A.CH Signal #2: ECD2B.CH
 Acq On : 05 Oct 2020 20:09
 Operator : DD\AJ
 Sample : L4242-05
 Misc :
 ALS Vial : 29 Sample Multiplier: 1

Instrument :
 ECD_O
 ClientSampleId :
 PAV-B24-100120-10-18

Integration File signal 1: autoint1.e
 Integration File signal 2: autoint2.e
 Quant Time: Oct 06 01:14:17 2020
 Quant Method : Z:\pestpcbsrv\HPCHEM1\ECD_O\methods\PO100320.M
 Quant Title : GC EXTRACTABLES
 QLast Update : Mon Oct 05 11:48:20 2020
 Response via : Initial Calibration
 Integrator: ChemStation 6890 Scale Mode: Small noise peaks clipped

Volume Inj. : 2 µl
 Signal #1 Phase : ZB-MR1 Signal #2 Phase: ZB-MR2
 Signal #1 Info : 30Mx0.32mmx 0.50µ Signal #2 Info : 30M x 0.32mm x 0.25µm

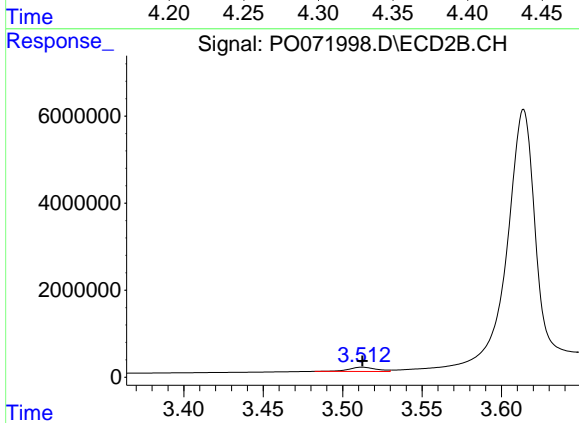




#1 Tetrachloro-m-xylene

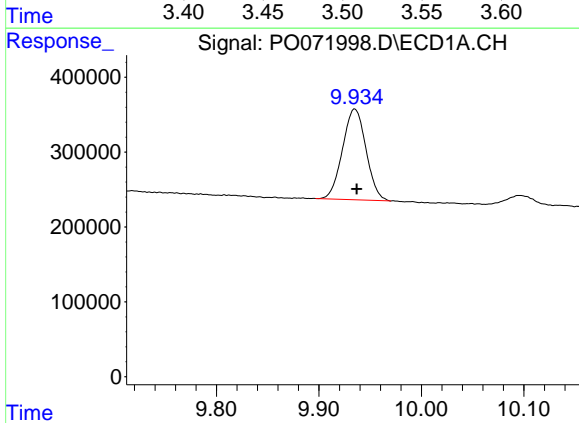
R.T.: 4.328 min
 Delta R.T.: -0.001 min
 Response: 2593646
 Conc: 36.11 ng/ml

Instrument :
 ECD_O
 ClientSampleId :
 PAV-B24-100120-10-18



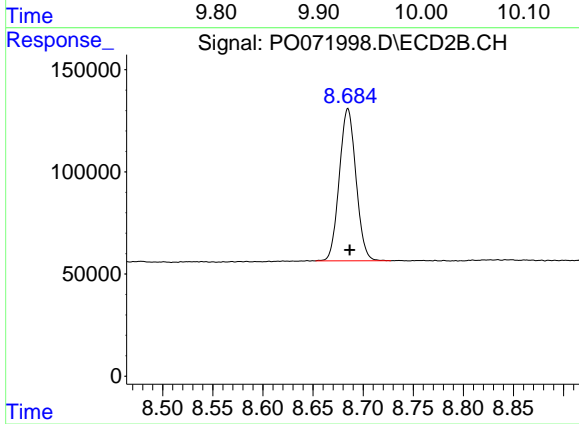
#1 Tetrachloro-m-xylene

R.T.: 3.512 min
 Delta R.T.: 0.000 min
 Response: 1172685
 Conc: 31.31 ng/ml



#2 Decachlorobiphenyl

R.T.: 9.935 min
 Delta R.T.: -0.002 min
 Response: 1931992
 Conc: 17.55 ng/ml



#2 Decachlorobiphenyl

R.T.: 8.685 min
 Delta R.T.: -0.002 min
 Response: 863106
 Conc: 15.17 ng/ml