

Data Path : Z:\pestpcbsrv\HPCHEM1\ECD_0\Data\PO100520\
 Data File : PO072008.D
 Signal(s) : Signal #1: ECD1A.CH Signal #2: ECD2B.CH
 Acq On : 05 Oct 2020 23:00
 Operator : DD\AJ
 Sample : L4248-02
 Misc :
 ALS Vial : 37 Sample Multiplier: 1

Instrument :
 ECD_0
 ClientSampled :
 NP-SOIL

Manual Integrations
 APPROVED

Ankita
 10/6/2020 12:17:04 PM

Integration File signal 1: autoint1.e
 Integration File signal 2: autoint2.e
 Quant Time: Oct 06 01:18:57 2020
 Quant Method : Z:\pestpcbsrv\HPCHEM1\ECD_0\methods\PO100320.M
 Quant Title : GC EXTRACTABLES
 QLast Update : Mon Oct 05 11:48:20 2020
 Response via : Initial Calibration
 Integrator: ChemStation 6890 Scale Mode: Small noise peaks clipped

Volume Inj. : 2 µl
 Signal #1 Phase : ZB-MR1 Signal #2 Phase: ZB-MR2
 Signal #1 Info : 30Mx0.32mmx 0.50µ Signal #2 Info : 30M x 0.32mm x 0.25µm

Compound	RT#1	RT#2	Resp#1	Resp#2	ng/ml	ng/ml

System Monitoring Compounds						
1) SA Tetrachlo...	4.326	3.510	1502790	757372	20.923m	20.220
2) SA Decachlor...	9.933	8.683	1572015	851688	14.277	14.974m
Target Compounds						
31) L7 AR-1260-1	7.285	6.289	196530	118410	41.006m	46.247m
32) L7 AR-1260-2	7.551	6.492	495894	253428	66.206	79.219
33) L7 AR-1260-3	7.909	6.634	363209	110888	56.971	37.574 #
34) L7 AR-1260-4	8.136	7.111	328351	126780	54.702	47.917
35) L7 AR-1260-5	8.451	7.365	689693	321789	49.772	48.434

(f)=RT Delta > 1/2 Window (#)=Amounts differ by > 25% (m)=manual int.

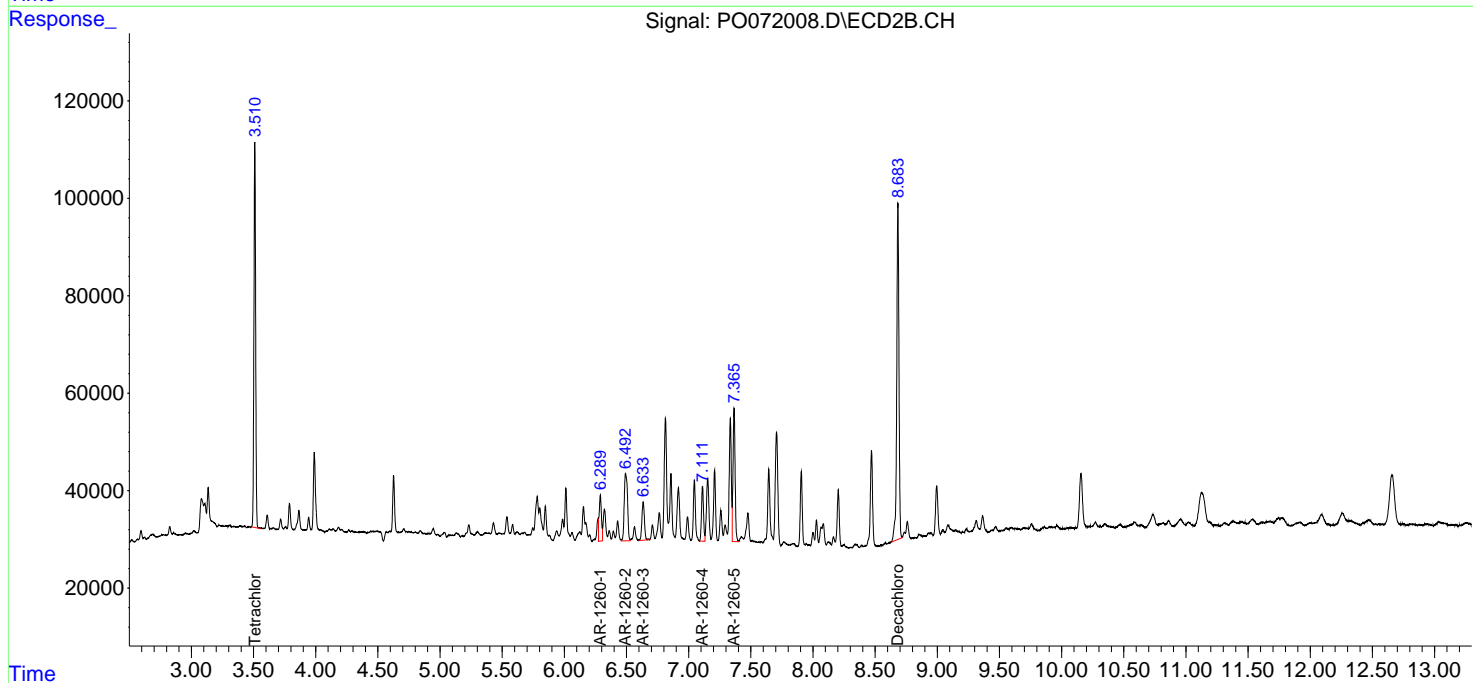
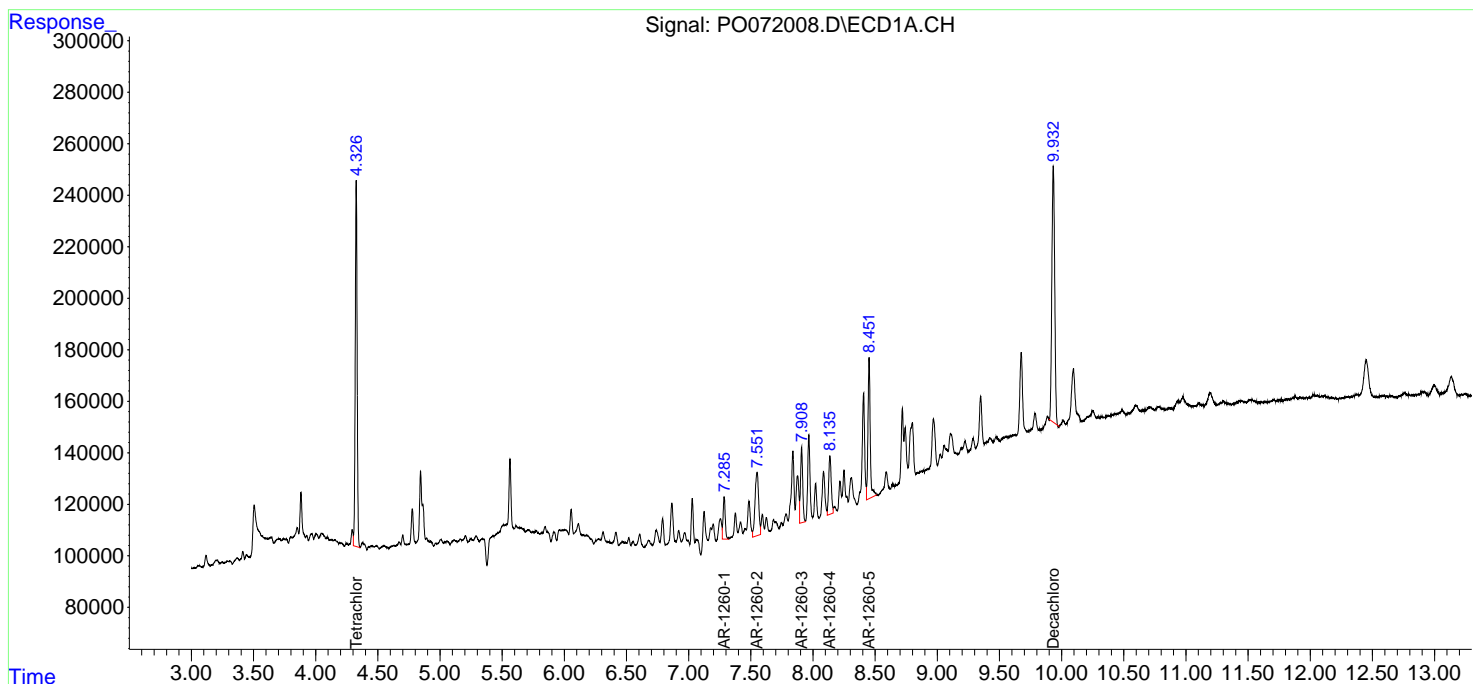
Data Path : Z:\pestpcbsrv\HPCHEM1\ECD_O\Data\PO100520\
 Data File : PO072008.D
 Signal(s) : Signal #1: ECD1A.CH Signal #2: ECD2B.CH
 Acq On : 05 Oct 2020 23:00
 Operator : DD\AJ
 Sample : L4248-02
 Misc :
 ALS Vial : 37 Sample Multiplier: 1

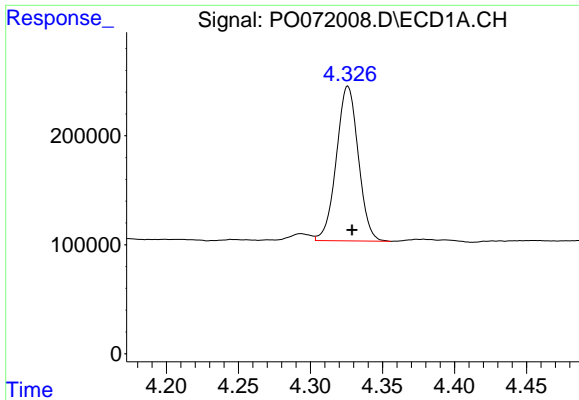
Instrument :
 ECD_O
ClientSampled :
 NP-SOIL

Manual Integrations
APPROVED
 Ankita
 10/6/2020 12:17:04 PM

Integration File signal 1: autoint1.e
 Integration File signal 2: autoint2.e
 Quant Time: Oct 06 01:18:57 2020
 Quant Method : Z:\pestpcbsrv\HPCHEM1\ECD_O\methods\PO100320.M
 Quant Title : GC EXTRACTABLES
 QLast Update : Mon Oct 05 11:48:20 2020
 Response via : Initial Calibration
 Integrator: ChemStation 6890 Scale Mode: Small noise peaks clipped

Volume Inj. : 2 µl
 Signal #1 Phase : ZB-MR1 Signal #2 Phase: ZB-MR2
 Signal #1 Info : 30Mx0.32mmx 0.50µ Signal #2 Info : 30M x 0.32mm x 0.25µm

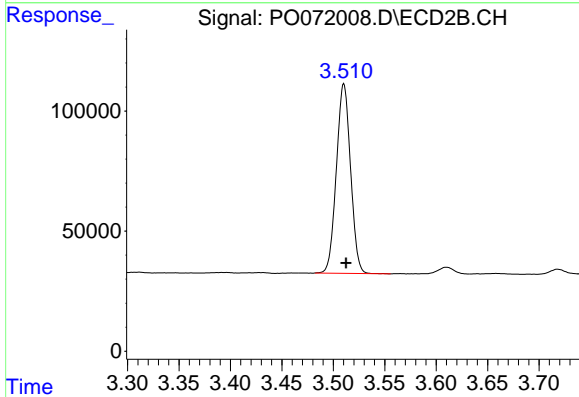




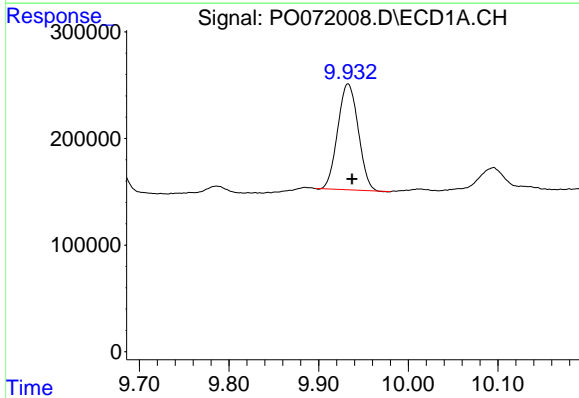
#1 Tetrachloro-m-xylene
 R.T.: 4.326 min
 Delta R.T.: -0.003 min
 Response: 1502790
 Conc: 20.92 ng/ml m

Instrument :
 ECD_O
 ClientSampled :
 NP-SOIL

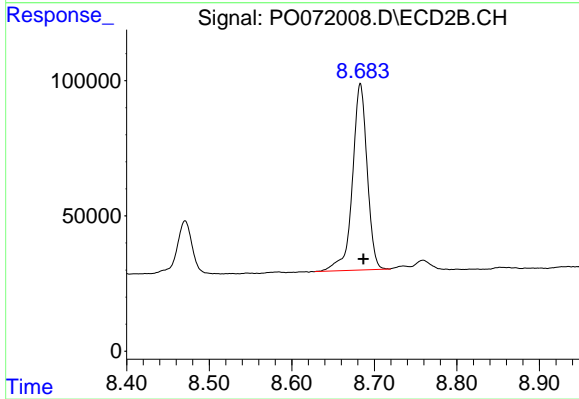
Manual Integrations
APPROVED
 Ankita
 10/6/2020 12:17:04 PM



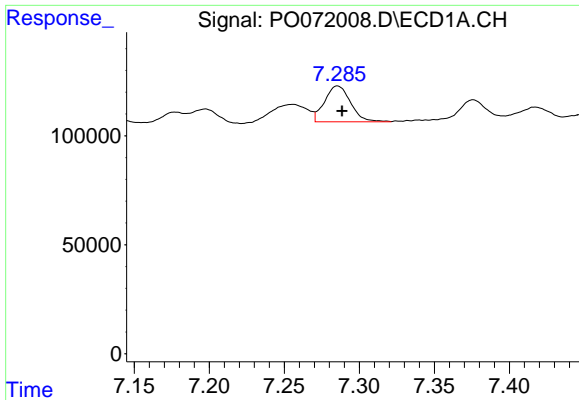
#1 Tetrachloro-m-xylene
 R.T.: 3.510 min
 Delta R.T.: -0.002 min
 Response: 757372
 Conc: 20.22 ng/ml



#2 Decachlorobiphenyl
 R.T.: 9.933 min
 Delta R.T.: -0.004 min
 Response: 1572015
 Conc: 14.28 ng/ml



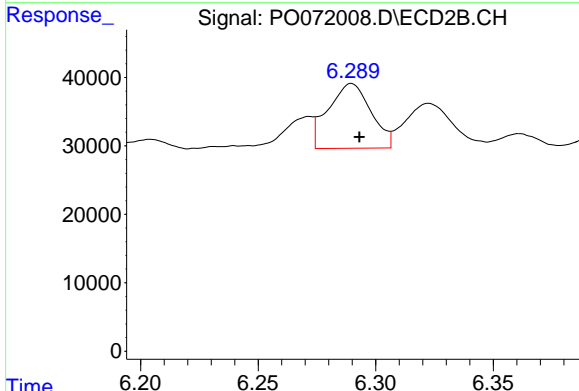
#2 Decachlorobiphenyl
 R.T.: 8.683 min
 Delta R.T.: -0.004 min
 Response: 851688
 Conc: 14.97 ng/ml m



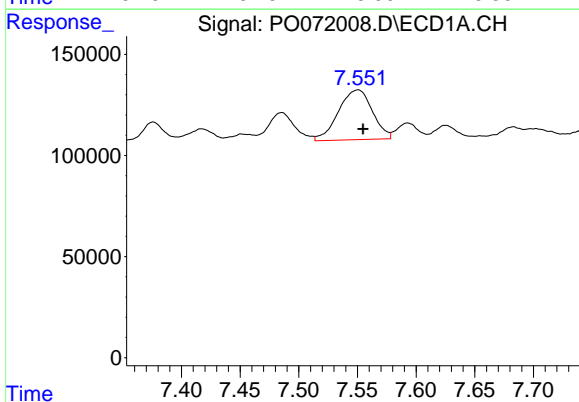
#31 AR-1260-1
 R.T.: 7.285 min
 Delta R.T.: -0.003 min
 Response: 196530
 Conc: 41.01 ng/ml m

Instrument :
 ECD_O
ClientSampled :
 NP-SOIL

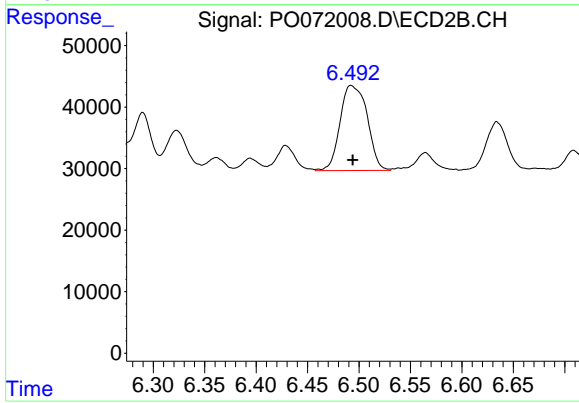
Manual Integrations
APPROVED
 Ankita
 10/6/2020 12:17:04 PM



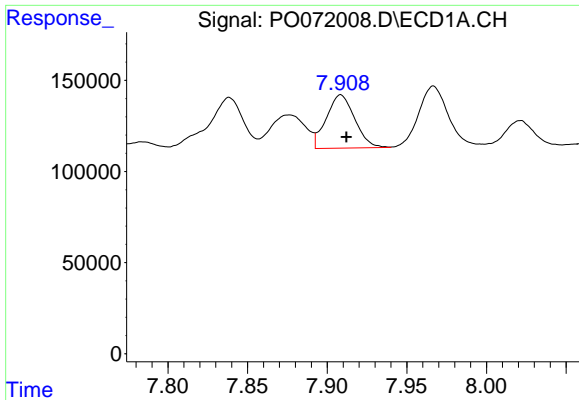
#31 AR-1260-1
 R.T.: 6.289 min
 Delta R.T.: -0.004 min
 Response: 118410
 Conc: 46.25 ng/ml m



#32 AR-1260-2
 R.T.: 7.551 min
 Delta R.T.: -0.004 min
 Response: 495894
 Conc: 66.21 ng/ml



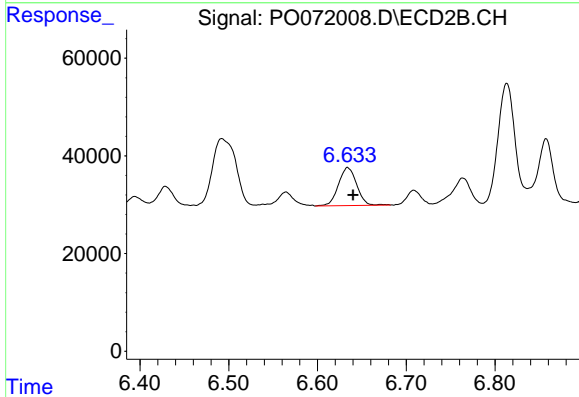
#32 AR-1260-2
 R.T.: 6.492 min
 Delta R.T.: -0.002 min
 Response: 253428
 Conc: 79.22 ng/ml



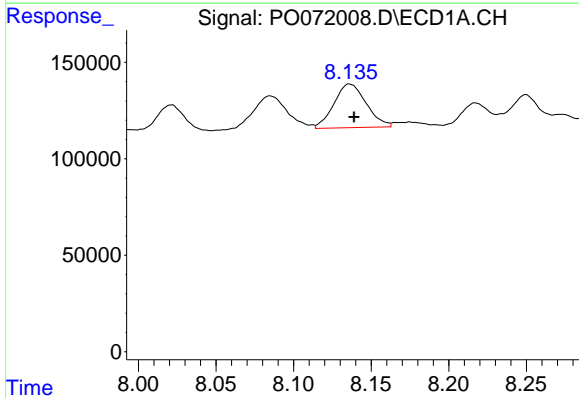
#33 AR-1260-3
 R.T.: 7.909 min
 Delta R.T.: -0.004 min
 Response: 363209
 Conc: 56.97 ng/ml

Instrument :
 ECD_O
ClientSampled :
 NP-SOIL

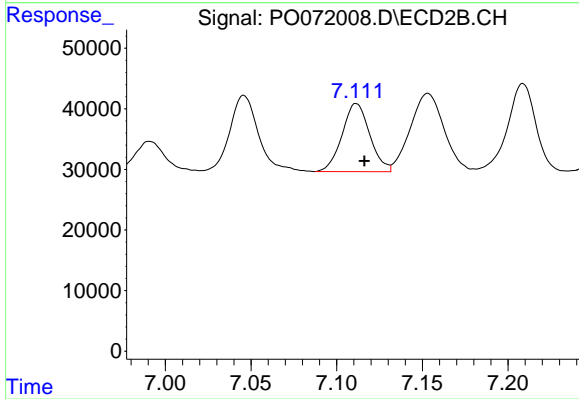
Manual Integrations
APPROVED
 Ankita
 10/6/2020 12:17:04 PM



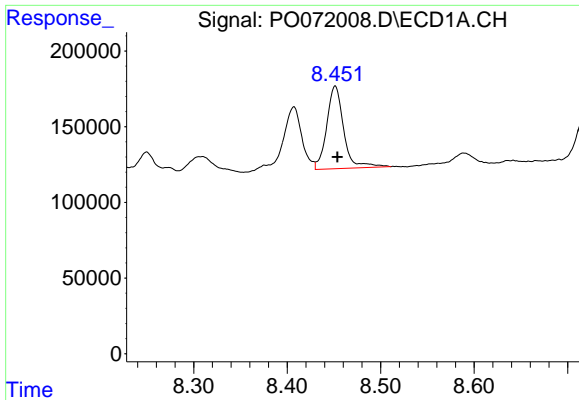
#33 AR-1260-3
 R.T.: 6.634 min
 Delta R.T.: -0.006 min
 Response: 110888
 Conc: 37.57 ng/ml



#34 AR-1260-4
 R.T.: 8.136 min
 Delta R.T.: -0.003 min
 Response: 328351
 Conc: 54.70 ng/ml



#34 AR-1260-4
 R.T.: 7.111 min
 Delta R.T.: -0.005 min
 Response: 126780
 Conc: 47.92 ng/ml

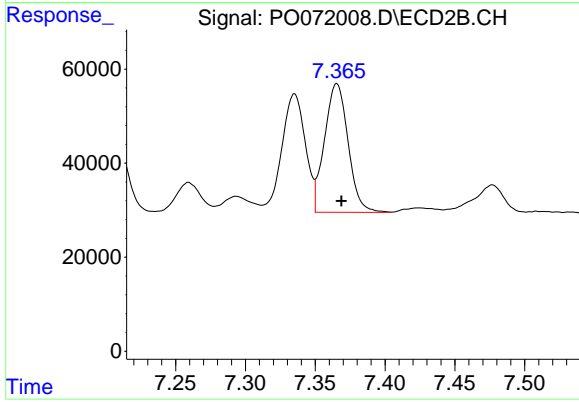


#35 AR-1260-5

R.T.: 8.451 min
Delta R.T.: -0.002 min
Response: 689693
Conc: 49.77 ng/ml

Instrument :
ECD_O
ClientSampled :
NP-SOIL

Manual Integrations
APPROVED
Ankita
10/6/2020 12:17:04 PM



#35 AR-1260-5

R.T.: 7.365 min
Delta R.T.: -0.003 min
Response: 321789
Conc: 48.43 ng/ml