

Data Path : Z:\pestpcbsrv\HPCHEM1\ECD\_0\Data\PO100520\  
 Data File : PO072013.D  
 Signal(s) : Signal #1: ECD1A.CH Signal #2: ECD2B.CH  
 Acq On : 06 Oct 2020 00:26  
 Operator : DD\AJ  
 Sample : L4264-01  
 Misc :  
 ALS Vial : 42 Sample Multiplier: 1

Instrument :  
 ECD\_0  
 ClientSampleId :  
 BPC-WASTE-DRUM

Integration File signal 1: autoint1.e  
 Integration File signal 2: autoint2.e  
 Quant Time: Oct 06 01:21:36 2020  
 Quant Method : Z:\pestpcbsrv\HPCHEM1\ECD\_0\methods\PO100320.M  
 Quant Title : GC EXTRACTABLES  
 QLast Update : Mon Oct 05 11:48:20 2020  
 Response via : Initial Calibration  
 Integrator: ChemStation 6890 Scale Mode: Small noise peaks clipped

Volume Inj. : 2 µl  
 Signal #1 Phase : ZB-MR1 Signal #2 Phase: ZB-MR2  
 Signal #1 Info : 30Mx0.32mmx 0.50µ Signal #2 Info : 30M x 0.32mm x 0.25µm

Compound	RT#1	RT#2	Resp#1	Resp#2	ng/ml	ng/ml
-----						
System Monitoring Compounds						
1) SA Tetrachlo...	4.326	3.511	1894808	975028	26.381	26.031
2) SA Decachlor...	9.932	8.684	1785957	796981	16.220	14.012

Target Compounds

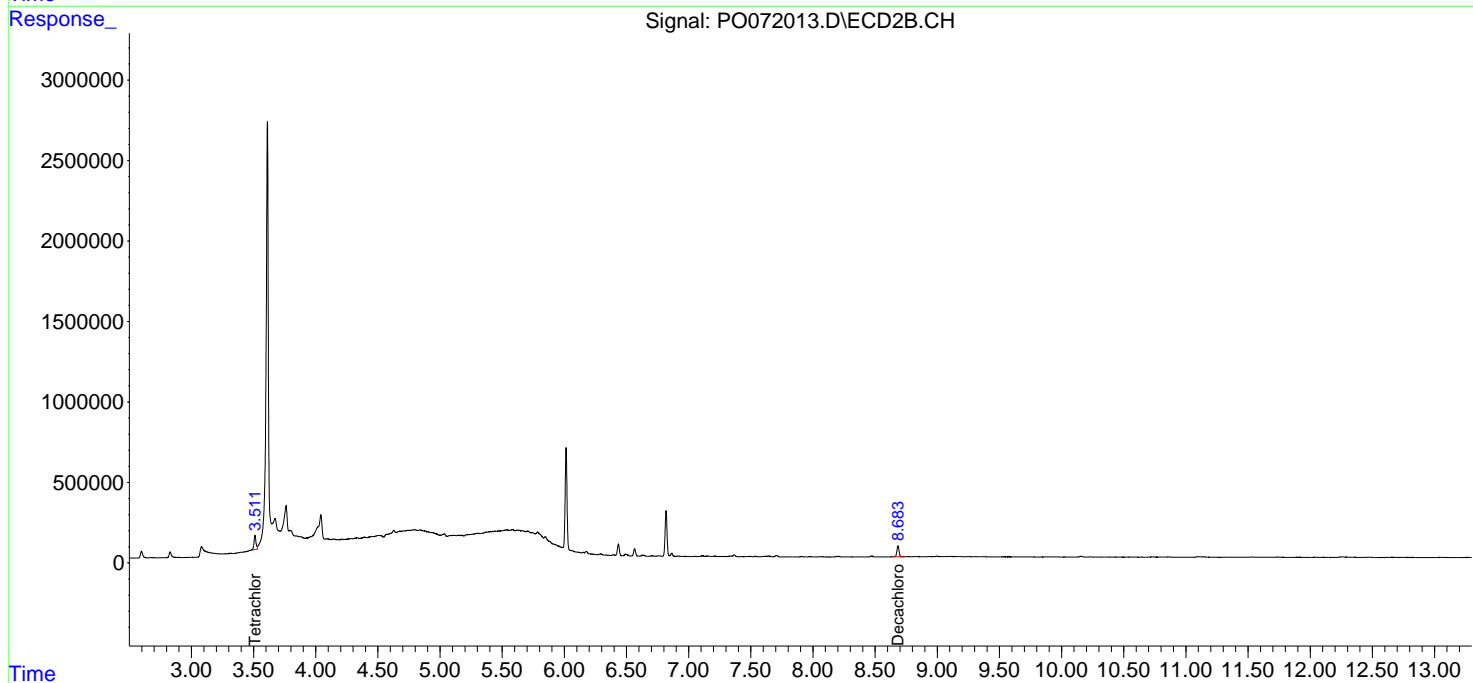
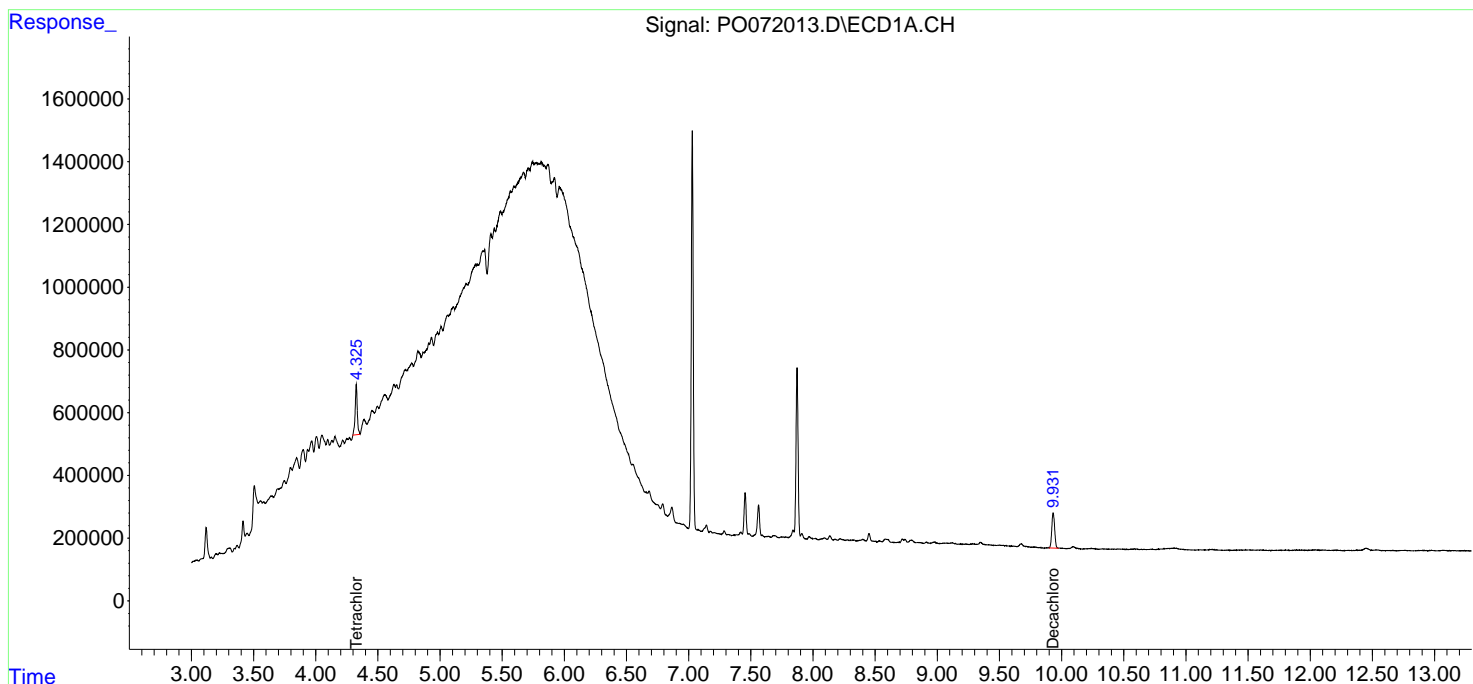
(f)=RT Delta > 1/2 Window (#)=Amounts differ by > 25% (m)=manual int.

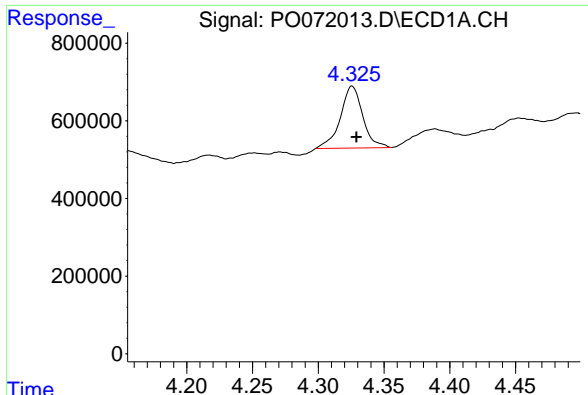
Data Path : Z:\pestpcbsrv\HPCHEM1\ECD\_O\Data\PO100520\  
 Data File : PO072013.D  
 Signal(s) : Signal #1: ECD1A.CH Signal #2: ECD2B.CH  
 Acq On : 06 Oct 2020 00:26  
 Operator : DD\AJ  
 Sample : L4264-01  
 Misc :  
 ALS Vial : 42 Sample Multiplier: 1

Instrument :  
 ECD\_O  
 ClientSampleId :  
 BPC-WASTE-DRUM

Integration File signal 1: autoint1.e  
 Integration File signal 2: autoint2.e  
 Quant Time: Oct 06 01:21:36 2020  
 Quant Method : Z:\pestpcbsrv\HPCHEM1\ECD\_O\methods\PO100320.M  
 Quant Title : GC EXTRACTABLES  
 QLast Update : Mon Oct 05 11:48:20 2020  
 Response via : Initial Calibration  
 Integrator: ChemStation 6890 Scale Mode: Small noise peaks clipped

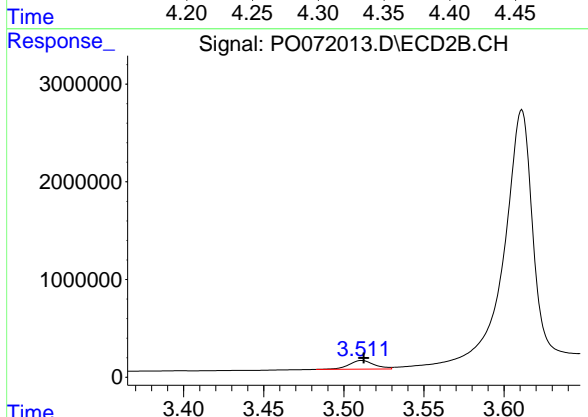
Volume Inj. : 2 µl  
 Signal #1 Phase : ZB-MR1 Signal #2 Phase: ZB-MR2  
 Signal #1 Info : 30Mx0.32mmx 0.50µm Signal #2 Info : 30M x 0.32mm x 0.25µm



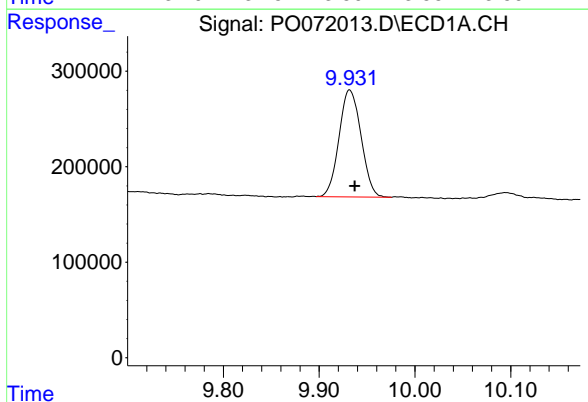


#1 Tetrachloro-m-xylene  
 R.T.: 4.326 min  
 Delta R.T.: -0.003 min  
 Response: 1894808  
 Conc: 26.38 ng/ml

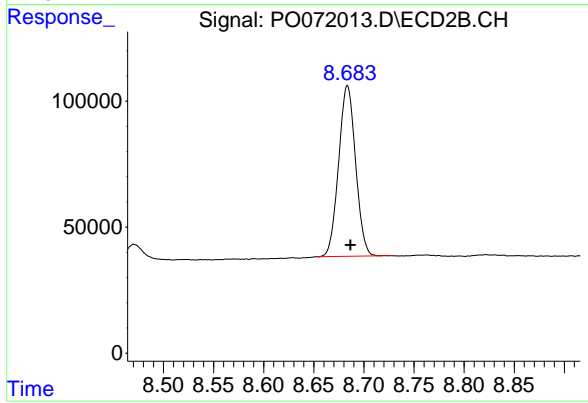
Instrument :  
 ECD\_O  
 ClientSampleId :  
 BPC-WASTE-DRUM



#1 Tetrachloro-m-xylene  
 R.T.: 3.511 min  
 Delta R.T.: -0.001 min  
 Response: 975028  
 Conc: 26.03 ng/ml



#2 Decachlorobiphenyl  
 R.T.: 9.932 min  
 Delta R.T.: -0.005 min  
 Response: 1785957  
 Conc: 16.22 ng/ml



#2 Decachlorobiphenyl  
 R.T.: 8.684 min  
 Delta R.T.: -0.003 min  
 Response: 796981  
 Conc: 14.01 ng/ml