

Data Path : Z:\pestpcbsrv\HPCHEM1\ECD\_0\Data\PO100521\  
 Data File : PO081797.D  
 Signal(s) : Signal #1: ECD1A.CH Signal #2: ECD2B.CH  
 Acq On : 05 Oct 2021 23:13  
 Operator : AJ\MA  
 Sample : PB139644BL  
 Misc :  
 ALS Vial : 26 Sample Multiplier: 1

**Instrument :**  
 ECD\_0  
**ClientSampleId :**  
 PB139644BL

**Manual Integrations**  
**APPROVED**  
 mohammad  
 10/7/2021 8:34:37 AM

Integration File signal 1: autoint1.e  
 Integration File signal 2: autoint2.e  
 Quant Time: Oct 06 05:35:34 2021  
 Quant Method : Z:\pestpcbsrv\HPCHEM1\ECD\_0\methods\PO092321.M  
 Quant Title : GC EXTRACTABLES  
 QLast Update : Fri Sep 24 02:21:54 2021  
 Response via : Initial Calibration  
 Integrator: ChemStation 6890 Scale Mode: Small noise peaks clipped

Volume Inj. : 2 µl  
 Signal #1 Phase : ZB-MR1 Signal #2 Phase: ZB-MR2  
 Signal #1 Info : 30Mx0.32mmx 0.50µ Signal #2 Info : 30M x 0.32mm x 0.25µm

Compound	RT#1	RT#2	Resp#1	Resp#2	ng/ml	ng/ml
-----						
System Monitoring Compounds						
1) SA Tetrachlo...	4.865	3.981	2079078	596492	23.314	22.389
2) SA Decachlor...	10.867f	9.321	1808740	556340	24.282m	23.957

Target Compounds

(f)=RT Delta > 1/2 Window (#)=Amounts differ by > 25% (m)=manual int.

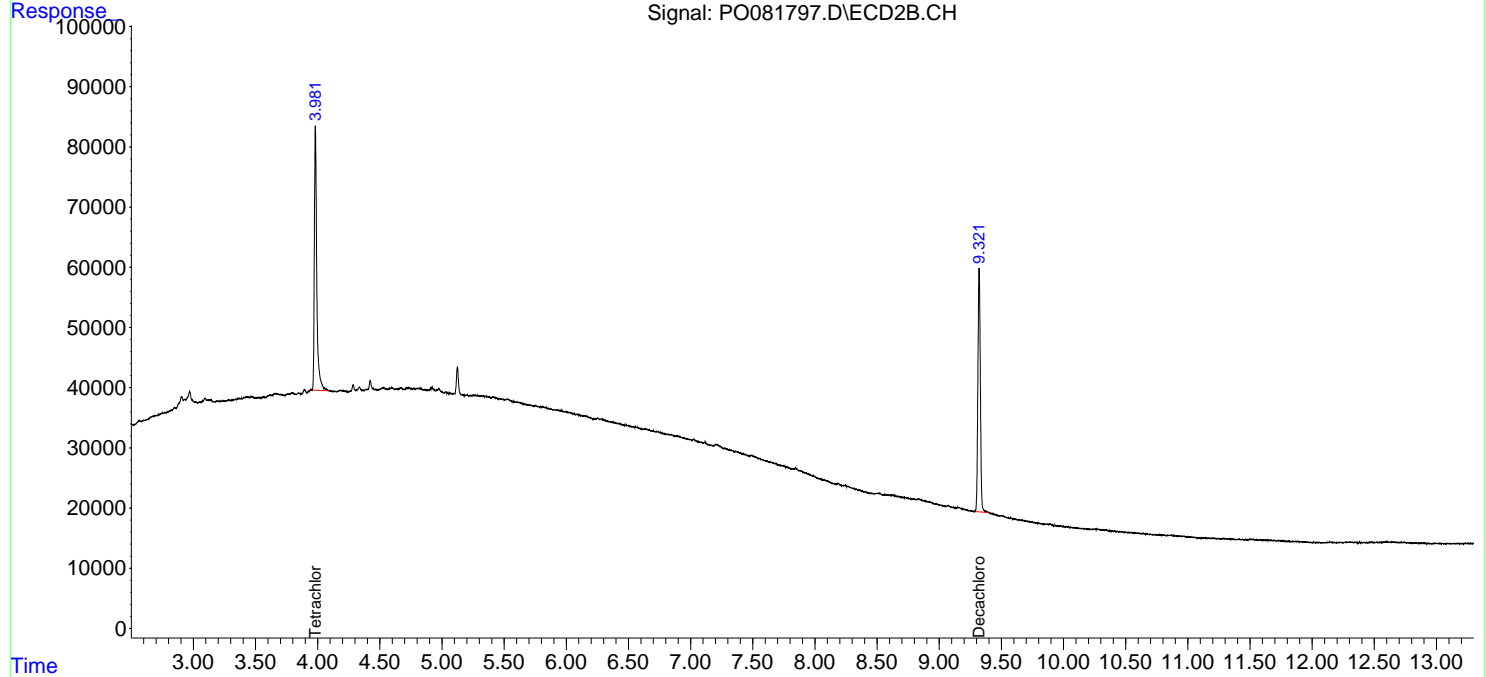
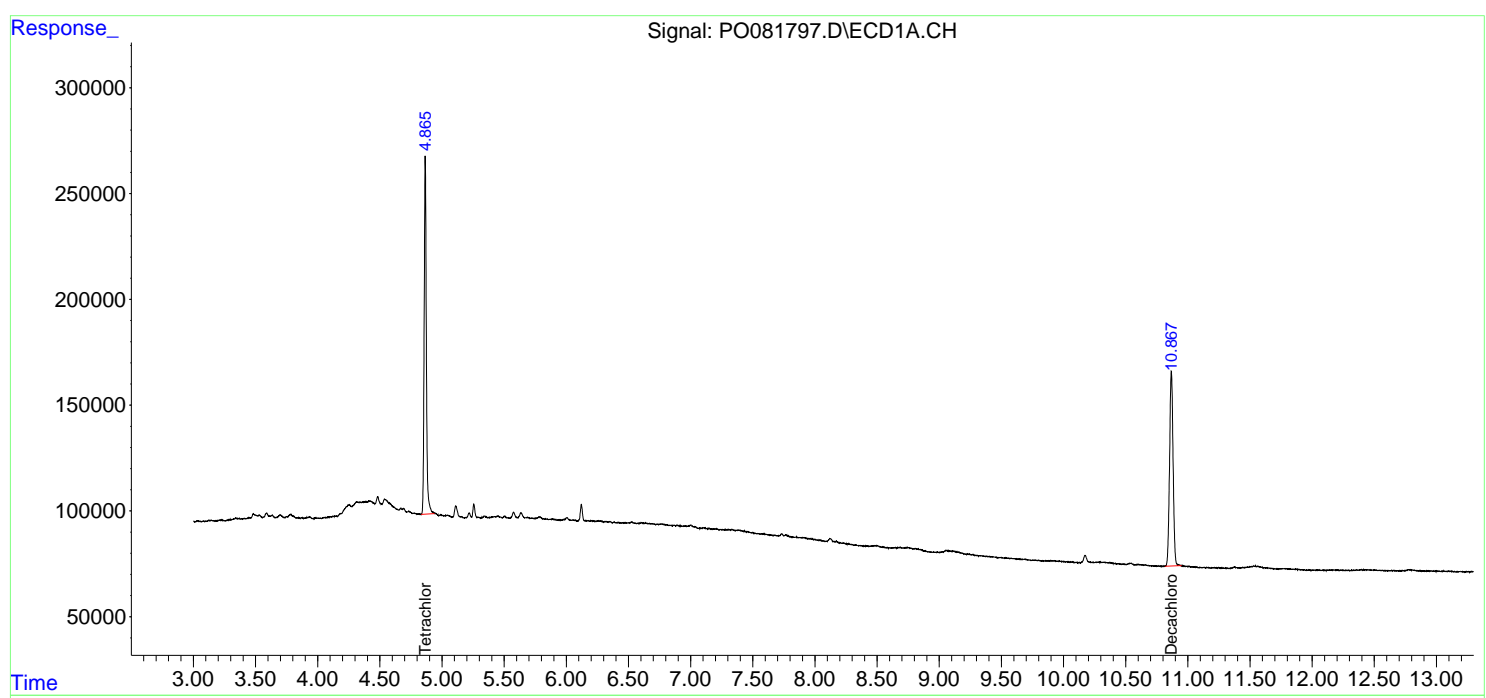
Data Path : Z:\pestpcbsrv\HPCHEM1\ECD\_0\Data\PO100521\  
 Data File : PO081797.D  
 Signal(s) : Signal #1: ECD1A.CH Signal #2: ECD2B.CH  
 Acq On : 05 Oct 2021 23:13  
 Operator : AJ\MA  
 Sample : PB139644BL  
 Misc :  
 ALS Vial : 26 Sample Multiplier: 1

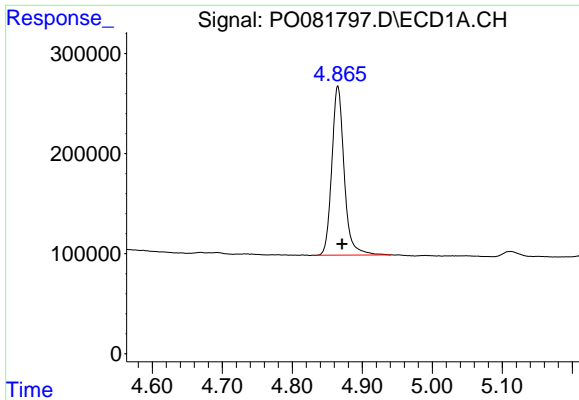
**Instrument :**  
 ECD\_O  
**ClientSampled :**  
 PB139644BL

**Manual Integrations**  
**APPROVED**  
 mohammad  
 10/7/2021 8:34:37 AM

Integration File signal 1: autoint1.e  
 Integration File signal 2: autoint2.e  
 Quant Time: Oct 06 05:35:34 2021  
 Quant Method : Z:\pestpcbsrv\HPCHEM1\ECD\_0\methods\PO092321.M  
 Quant Title : GC EXTRACTABLES  
 QLast Update : Fri Sep 24 02:21:54 2021  
 Response via : Initial Calibration  
 Integrator: ChemStation 6890 Scale Mode: Small noise peaks clipped

Volume Inj. : 2 µl  
 Signal #1 Phase : ZB-MR1 Signal #2 Phase: ZB-MR2  
 Signal #1 Info : 30Mx0.32mmx 0.50µ Signal #2 Info : 30M x 0.32mm x 0.25µm

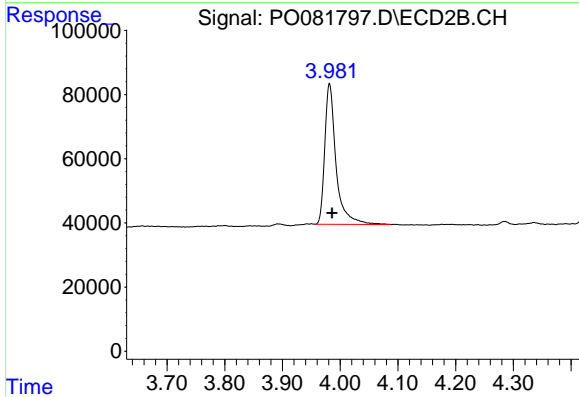




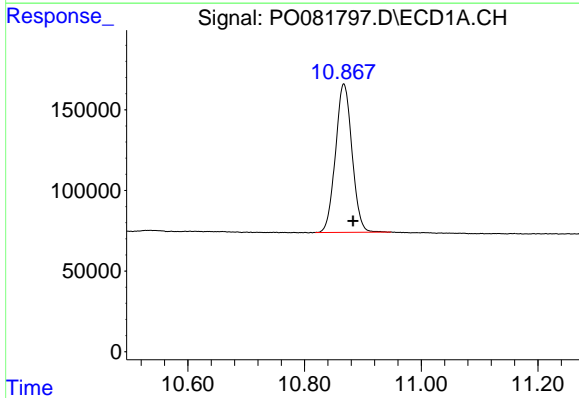
#1 Tetrachloro-m-xylene  
 R.T.: 4.865 min  
 Delta R.T.: -0.006 min  
 Response: 2079078  
 Conc: 23.31 ng/ml

Instrument :  
 ECD\_O  
 ClientSampleId :  
 PB139644BL

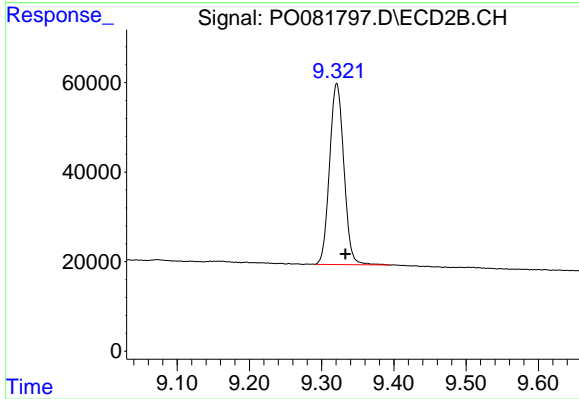
Manual Integrations  
 APPROVED  
 mohammad  
 10/7/2021 8:34:37 AM



#1 Tetrachloro-m-xylene  
 R.T.: 3.981 min  
 Delta R.T.: -0.005 min  
 Response: 596492  
 Conc: 22.39 ng/ml



#2 Decachlorobiphenyl  
 R.T.: 10.867 min  
 Delta R.T.: -0.016 min  
 Response: 1808740  
 Conc: 24.28 ng/ml m



#2 Decachlorobiphenyl  
 R.T.: 9.321 min  
 Delta R.T.: -0.012 min  
 Response: 556340  
 Conc: 23.96 ng/ml