

Data Path : Z:\pestpcbsrv\HPCHEM1\ECD_0\Data\PO100522\
 Data File : PO089700.D
 Signal(s) : Signal #1: ECD1A.ch Signal #2: ECD2B.ch
 Acq On : 05 Oct 2022 07:39
 Operator : YP/AJ
 Sample : AR1248CCC500
 Misc :
 ALS Vial : 17 Sample Multiplier: 1

Instrument :
 ECD_0
 ClientSampleId :
 AR1248CCC500

Integration File signal 1: autoint1.e
 Integration File signal 2: autoint2.e
 Quant Time: Oct 05 18:04:11 2022
 Quant Method : Z:\pestpcbsrv\HPCHEM1\ECD_0\methods\PO100422.M
 Quant Title : GC EXTRACTABLES
 QLast Update : Wed Oct 05 06:04:42 2022
 Response via : Initial Calibration
 Integrator: ChemStation

Volume Inj. : 2 µl
 Signal #1 Phase : ZB-MR1 Signal #2 Phase: ZB-MR2
 Signal #1 Info : 30Mx0.32mmx 0.50µ Signal #2 Info : 30M x 0.32mm x 0.25µm

Compound	RT#1	RT#2	Resp#1	Resp#2	ng/ml	ng/ml

System Monitoring Compounds						
1) SA Tetrachlo...	4.335	3.559	144.5E6	50864171	55.599	56.322
2) SA Decachlor...	10.098	8.591	60139947	43712131	55.946	55.010
Target Compounds						
3) L1 AR-1016-1	5.505	4.651	24447230	10088961	349.114	320.011
4) L1 AR-1016-2	5.528	4.670	29354295	9821680	290.864	230.979
5) L1 AR-1016-3	5.590	4.848	14772418	6717997	237.091	300.026 #
6) L1 AR-1016-4	5.689	4.889	15980231	14006981	325.895	794.439 #
7) L1 AR-1016-5	5.986	5.103	36863991	17491638	787.606	719.730
8) L2 AR-1221-1	4.541	3.769	395336	148940	13.203	14.170
9) L2 AR-1221-2	4.640	3.859	2139168	729639	96.450	92.070
10) L2 AR-1221-3	4.706	3.936	2367606	774801	35.133	30.304
11) L3 AR-1232-1	4.706	3.936	2367606	774801	43.096	38.548
12) L3 AR-1232-2	5.043	4.670	15223143	9821680	643.296	531.285
13) L3 AR-1232-3	5.528	4.848	29354295	6717997	653.218	703.734
14) L3 AR-1232-4	5.689	4.931	15980231	15112923	737.385	1734.454 #
15) L3 AR-1232-5	5.781	5.103	34759133	17491638	2015.162	1791.121
16) L4 AR-1242-1	5.505	4.651	24447230	10088961	397.190	373.802
17) L4 AR-1242-2	5.528	4.670	29354295	9821680	331.717	272.755
18) L4 AR-1242-3	5.590	4.848	14772418	6717997	266.600	349.272 #
19) L4 AR-1242-4	5.689	4.931	15980231	15112923	371.284	780.338 #
20) L4 AR-1242-5	6.430	5.457	37222846	25090354	900.644	1041.185
21) L5 AR-1248-1	5.505	4.651	24447230	10088961	537.447	516.493
22) L5 AR-1248-2	5.781	4.889	34759133	14006981	537.949	516.973
23) L5 AR-1248-3	5.986	4.931	36863991	15112923	541.311	529.611
24) L5 AR-1248-4	6.391	5.103	38500630	17491638	533.194	520.776
25) L5 AR-1248-5	6.430	5.498	37222846	17537597	533.733	538.389
26) L6 AR-1254-1	6.363	5.457	29595754	25090354	405.659	498.805
27) L6 AR-1254-2	6.587	5.606	37034570	7259370	348.290	166.121 #
28) L6 AR-1254-3	6.952	6.011	20155831	11321395	185.007	159.351
29) L6 AR-1254-4	7.239	6.241	12754047	7964068	171.454	179.837
30) L6 AR-1254-5	7.660	6.661	2920719	2075100	38.490	34.216
31) L7 AR-1260-1	7.119	6.130	2546669	1472982	32.416	30.466
32) L7 AR-1260-2	7.376	6.332	1224964	1120540	14.176	19.109 #
33) L7 AR-1260-3	7.660	6.485	2920719	1485616	31.330	27.044
34) L7 AR-1260-4	7.949	6.960	1498343	161179	22.943	3.644 #
35) L7 AR-1260-5	8.284	7.203	434160	425157	3.577	4.144
36) L8 AR-1262-1	7.724	6.731	581090	138120	6.484	2.156 #
37) L8 AR-1262-2	8.284	7.203	434160	425157	3.071	3.725
38) L8 AR-1262-3	8.604	7.480	319635	492852	3.237	11.213 #
39) L8 AR-1262-4	8.645f	7.551	587245	288441	13.699	3.525 #
40) L8 AR-1262-5	9.339	7.993f	58897	534610	1.150	14.693 #
41) L9 AR-1268-1	8.604	7.480	319635	492852	1.944	3.758 #

Data Path : Z:\pestpcbsrv\HPCHEM1\ECD_0\Data\PO100522\
 Data File : PO089700.D
 Signal(s) : Signal #1: ECD1A.ch Signal #2: ECD2B.ch
 Acq On : 05 Oct 2022 07:39
 Operator : YP/AJ
 Sample : AR1248CCC500
 Misc :
 ALS Vial : 17 Sample Multiplier: 1

Instrument :
 ECD_0
 ClientSampleId :
 AR1248CCC500

Integration File signal 1: autoint1.e
 Integration File signal 2: autoint2.e
 Quant Time: Oct 05 18:04:11 2022
 Quant Method : Z:\pestpcbsrv\HPCHEM1\ECD_0\methods\PO100422.M
 Quant Title : GC EXTRACTABLES
 QLast Update : Wed Oct 05 06:04:42 2022
 Response via : Initial Calibration
 Integrator: ChemStation

Volume Inj. : 2 µl
 Signal #1 Phase : ZB-MR1 Signal #2 Phase: ZB-MR2
 Signal #1 Info : 30Mx0.32mmx 0.50µ Signal #2 Info : 30M x 0.32mm x 0.25µm

	Compound	RT#1	RT#2	Resp#1	Resp#2	ng/ml	ng/ml
42)	L9 AR-1268-2	8.645f	7.551	587245	288441	3.990	2.520 #
43)	L9 AR-1268-3	8.918	7.776	139017	283164	1.125	2.939 #
44)	L9 AR-1268-4	9.339	7.993f	58897	534610	1.046	13.563 #
45)	L9 AR-1268-5	9.749	8.335	747173	374084	1.946	1.228 #

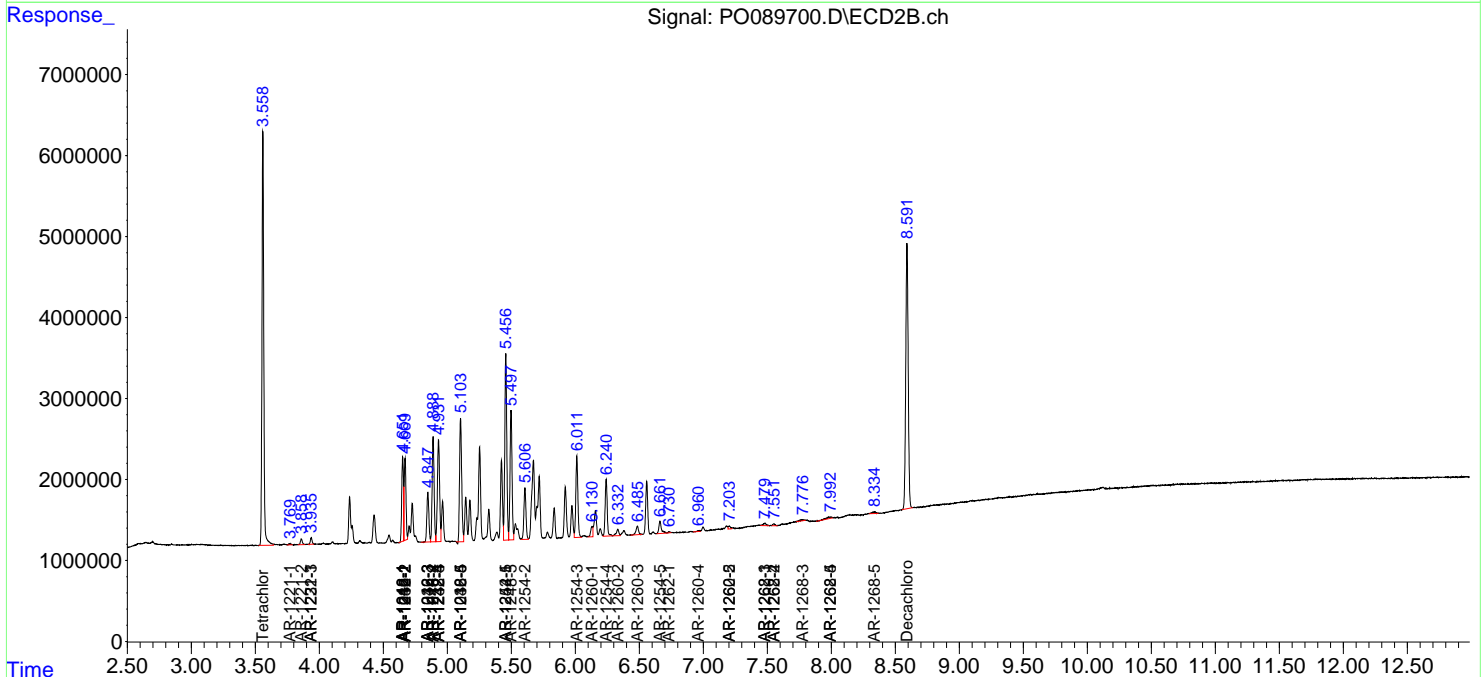
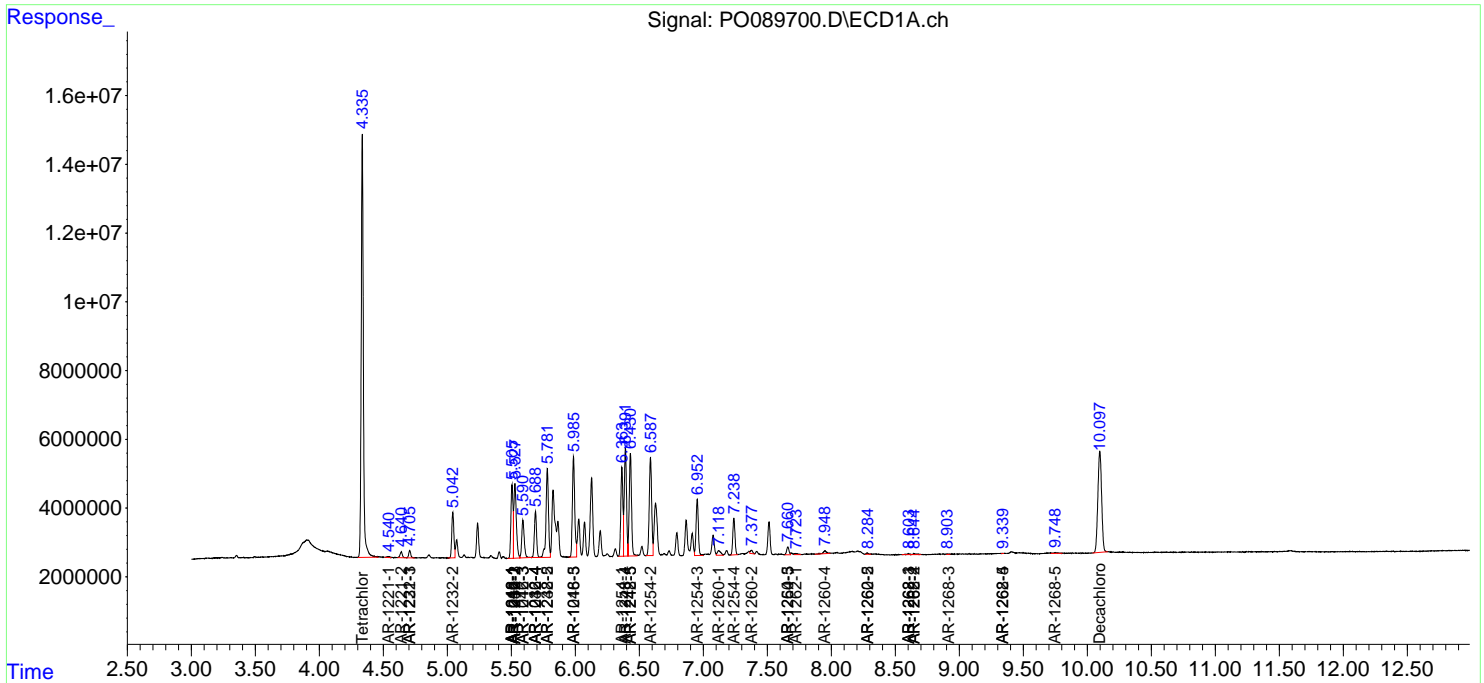
(f)=RT Delta > 1/2 Window (#)=Amounts differ by > 25% (m)=manual int.

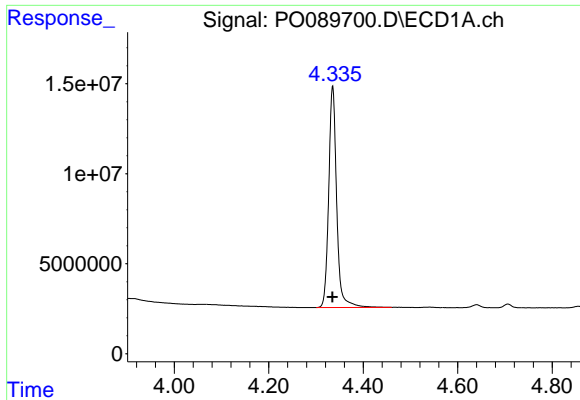
Data Path : Z:\pestpcbsrv\HPCHEM1\ECD_O\Data\PO100522\
 Data File : PO089700.D
 Signal(s) : Signal #1: ECD1A.ch Signal #2: ECD2B.ch
 Acq On : 05 Oct 2022 07:39
 Operator : YP/AJ
 Sample : AR1248CCC500
 Misc :
 ALS Vial : 17 Sample Multiplier: 1

Instrument :
 ECD_O
 ClientSampleId :
 AR1248CCC500

Integration File signal 1: autoint1.e
 Integration File signal 2: autoint2.e
 Quant Time: Oct 05 18:04:11 2022
 Quant Method : Z:\pestpcbsrv\HPCHEM1\ECD_O\methods\PO100422.M
 Quant Title : GC EXTRACTABLES
 QLast Update : Wed Oct 05 06:04:42 2022
 Response via : Initial Calibration
 Integrator: ChemStation

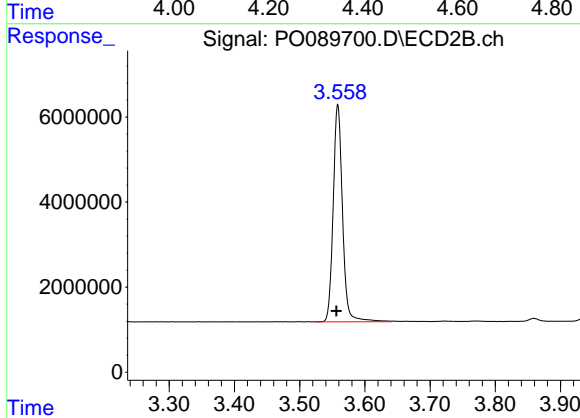
Volume Inj. : 2 µl
 Signal #1 Phase : ZB-MR1 Signal #2 Phase: ZB-MR2
 Signal #1 Info : 30Mx0.32mmx 0.50µ Signal #2 Info : 30M x 0.32mm x 0.25µm



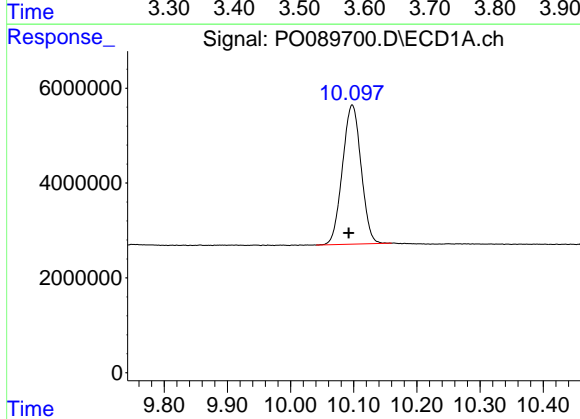


#1 Tetrachloro-m-xylene
 R.T.: 4.335 min
 Delta R.T.: 0.000 min
 Response: 144546996
 Conc: 55.60 ng/ml

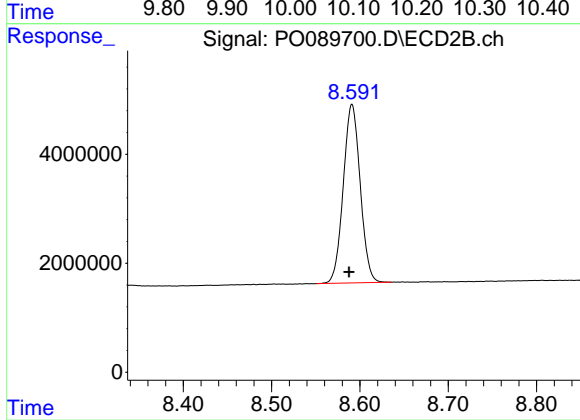
Instrument :
 ECD_O
 ClientSampleId :
 AR1248CCC500



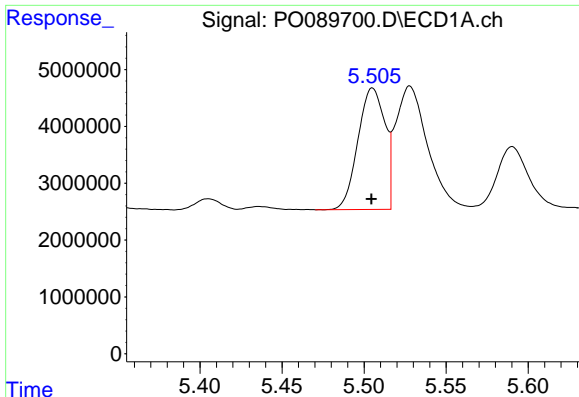
#1 Tetrachloro-m-xylene
 R.T.: 3.559 min
 Delta R.T.: 0.002 min
 Response: 50864171
 Conc: 56.32 ng/ml



#2 Decachlorobiphenyl
 R.T.: 10.098 min
 Delta R.T.: 0.006 min
 Response: 60139947
 Conc: 55.95 ng/ml



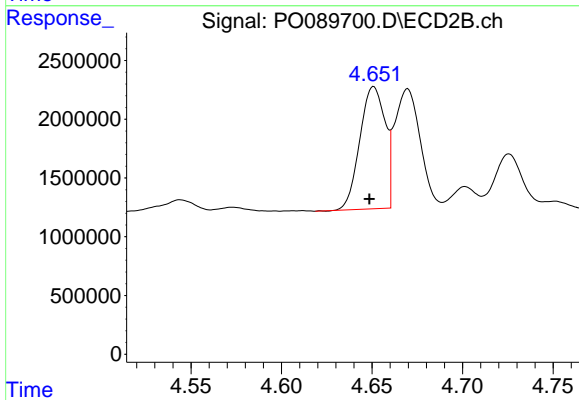
#2 Decachlorobiphenyl
 R.T.: 8.591 min
 Delta R.T.: 0.003 min
 Response: 43712131
 Conc: 55.01 ng/ml



#3 AR-1016-1

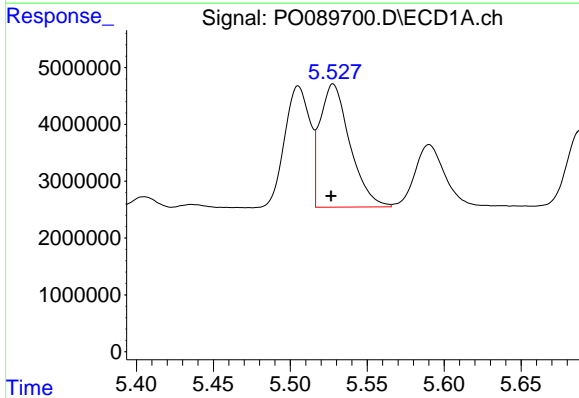
R.T.: 5.505 min
 Delta R.T.: 0.000 min
 Response: 24447230
 Conc: 349.11 ng/ml

Instrument :
 ECD_O
 ClientSampleId :
 AR1248CCC500



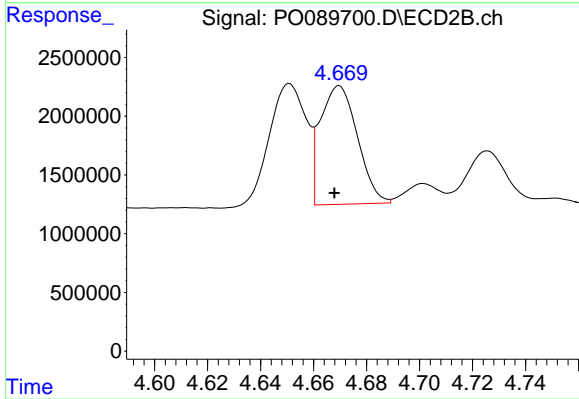
#3 AR-1016-1

R.T.: 4.651 min
 Delta R.T.: 0.002 min
 Response: 10088961
 Conc: 320.01 ng/ml



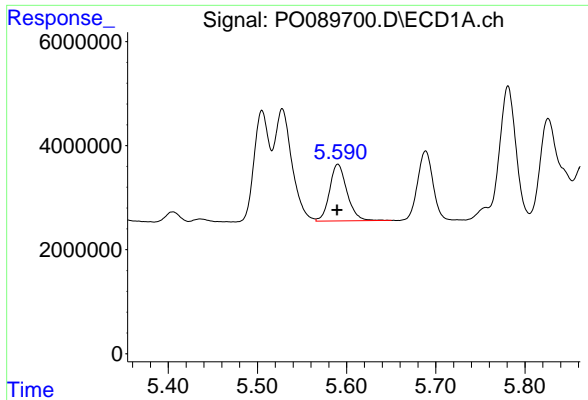
#4 AR-1016-2

R.T.: 5.528 min
 Delta R.T.: 0.001 min
 Response: 29354295
 Conc: 290.86 ng/ml



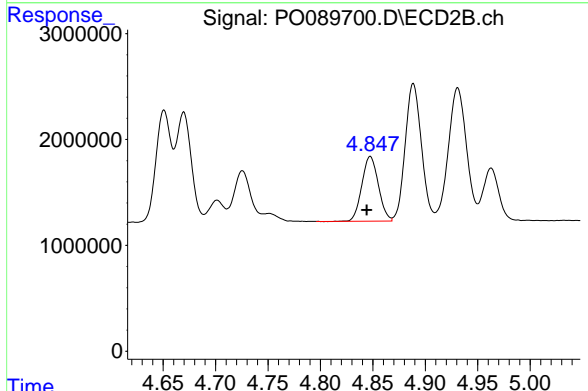
#4 AR-1016-2

R.T.: 4.670 min
 Delta R.T.: 0.002 min
 Response: 9821680
 Conc: 230.98 ng/ml

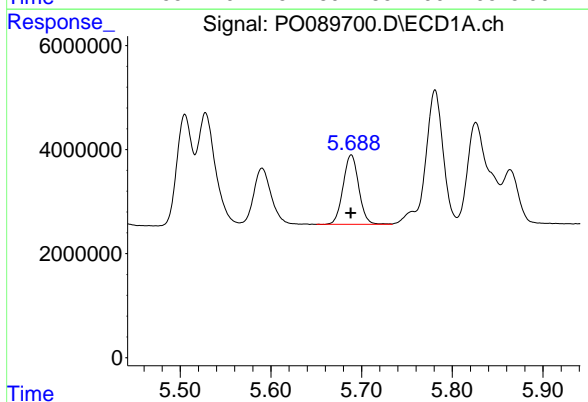


#5 AR-1016-3
 R.T.: 5.590 min
 Delta R.T.: 0.001 min
 Response: 14772418
 Conc: 237.09 ng/ml

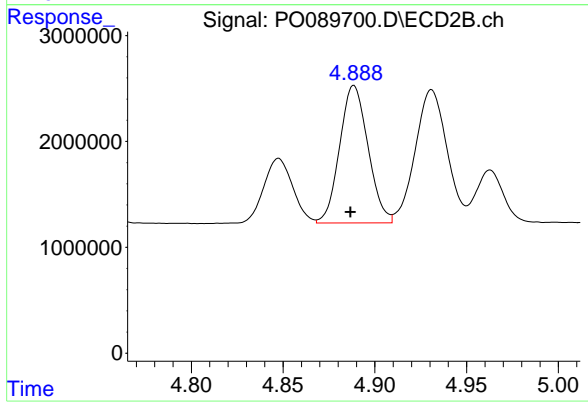
Instrument :
 ECD_O
 ClientSampleId :
 AR1248CCC500



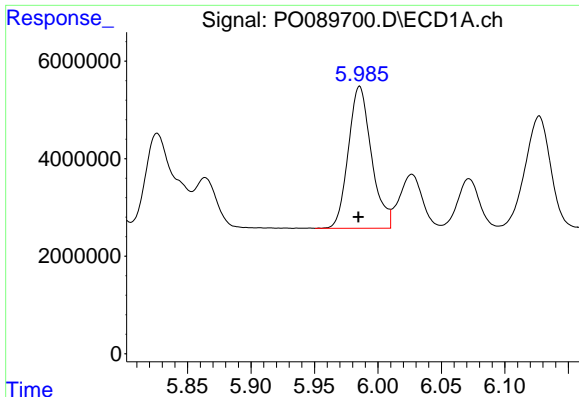
#5 AR-1016-3
 R.T.: 4.848 min
 Delta R.T.: 0.003 min
 Response: 6717997
 Conc: 300.03 ng/ml



#6 AR-1016-4
 R.T.: 5.689 min
 Delta R.T.: 0.000 min
 Response: 15980231
 Conc: 325.89 ng/ml



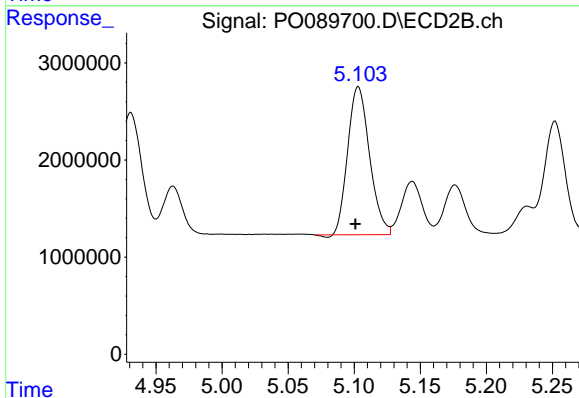
#6 AR-1016-4
 R.T.: 4.889 min
 Delta R.T.: 0.002 min
 Response: 14006981
 Conc: 794.44 ng/ml



#7 AR-1016-5

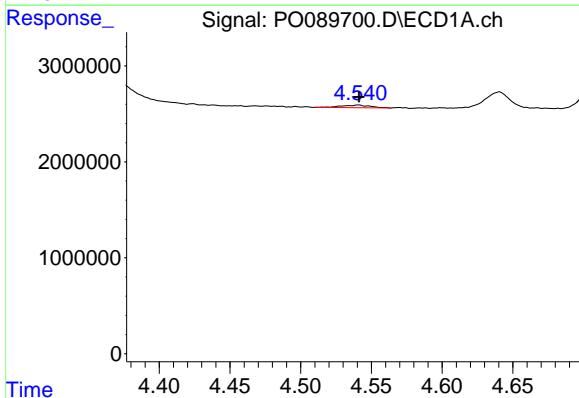
R.T.: 5.986 min
 Delta R.T.: 0.001 min
 Response: 36863991
 Conc: 787.61 ng/ml

Instrument :
 ECD_O
 ClientSampleId :
 AR1248CCC500



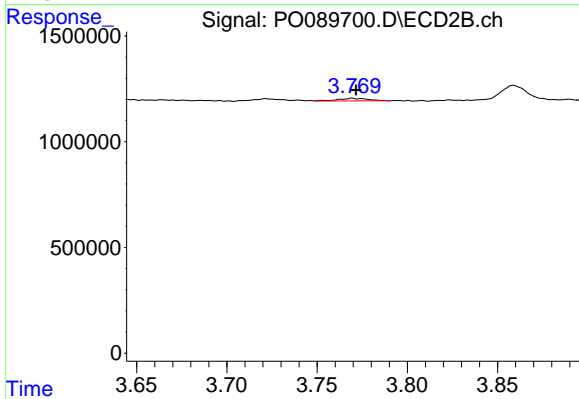
#7 AR-1016-5

R.T.: 5.103 min
 Delta R.T.: 0.002 min
 Response: 17491638
 Conc: 719.73 ng/ml



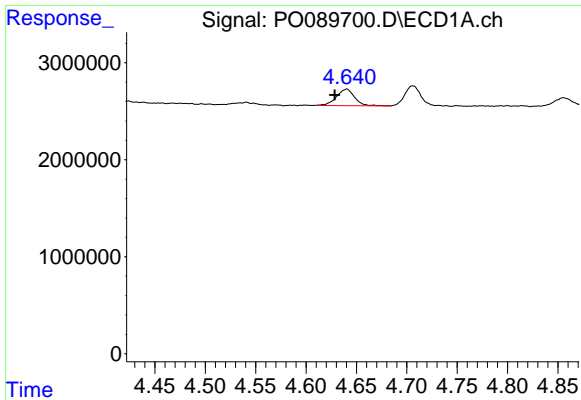
#8 AR-1221-1

R.T.: 4.541 min
 Delta R.T.: 0.000 min
 Response: 395336
 Conc: 13.20 ng/ml



#8 AR-1221-1

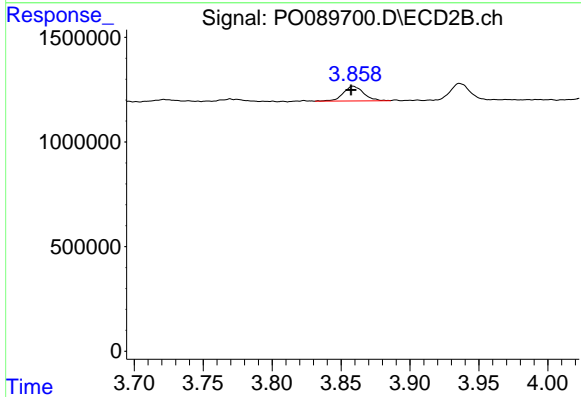
R.T.: 3.769 min
 Delta R.T.: -0.002 min
 Response: 148940
 Conc: 14.17 ng/ml



#9 AR-1221-2

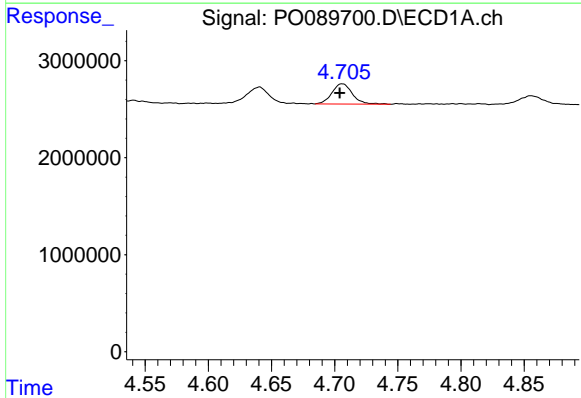
R.T.: 4.640 min
 Delta R.T.: 0.012 min
 Response: 2139168
 Conc: 96.45 ng/ml

Instrument :
 ECD_O
 ClientSampleId :
 AR1248CCC500



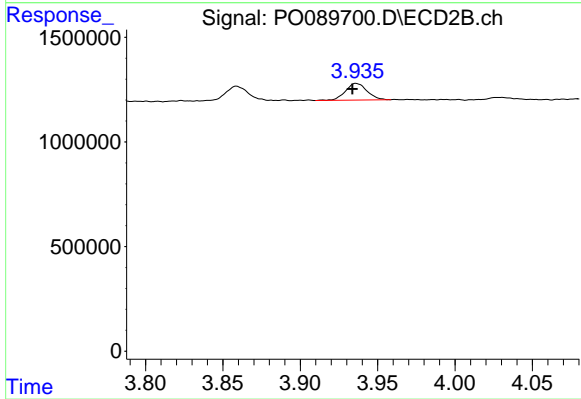
#9 AR-1221-2

R.T.: 3.859 min
 Delta R.T.: 0.001 min
 Response: 729639
 Conc: 92.07 ng/ml



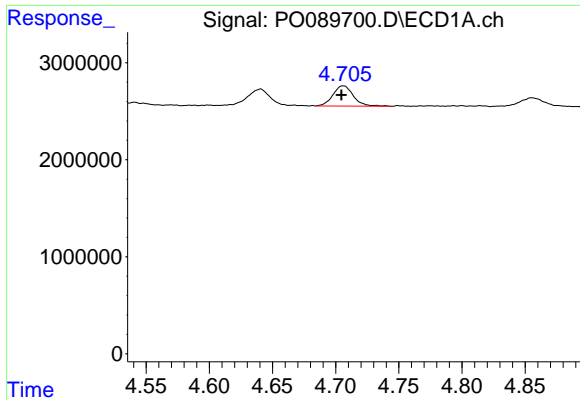
#10 AR-1221-3

R.T.: 4.706 min
 Delta R.T.: 0.002 min
 Response: 2367606
 Conc: 35.13 ng/ml



#10 AR-1221-3

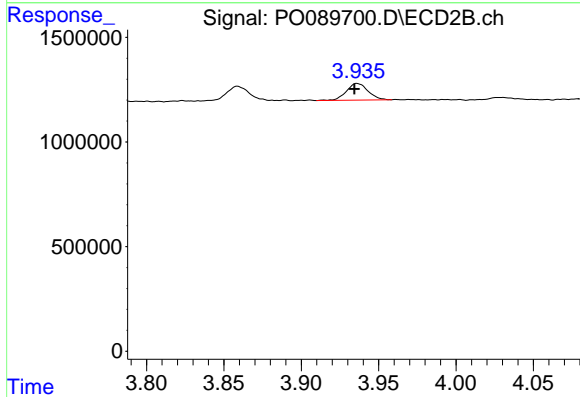
R.T.: 3.936 min
 Delta R.T.: 0.002 min
 Response: 774801
 Conc: 30.30 ng/ml



#11 AR-1232-1

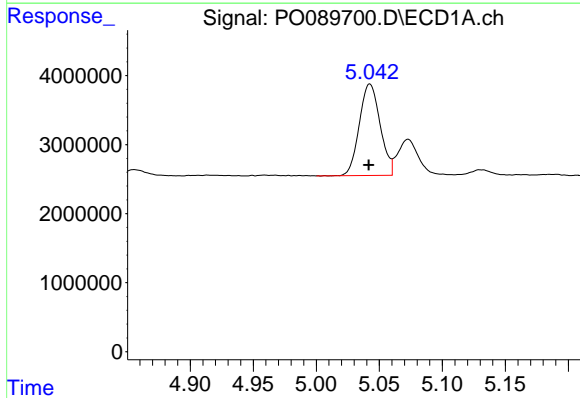
R.T.: 4.706 min
 Delta R.T.: 0.001 min
 Response: 2367606
 Conc: 43.10 ng/ml

Instrument :
 ECD_O
 ClientSampleId :
 AR1248CCC500



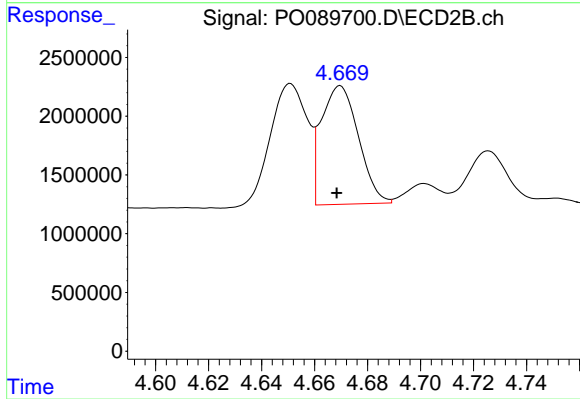
#11 AR-1232-1

R.T.: 3.936 min
 Delta R.T.: 0.002 min
 Response: 774801
 Conc: 38.55 ng/ml



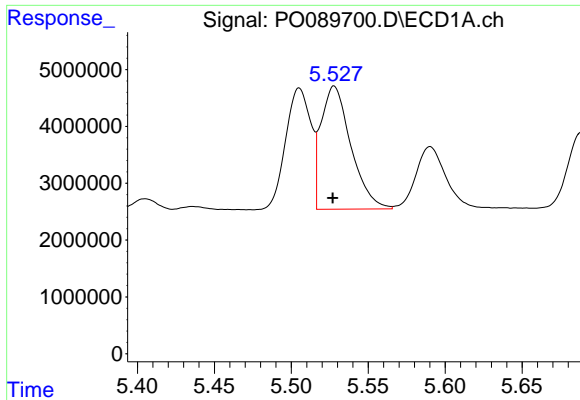
#12 AR-1232-2

R.T.: 5.043 min
 Delta R.T.: 0.000 min
 Response: 15223143
 Conc: 643.30 ng/ml



#12 AR-1232-2

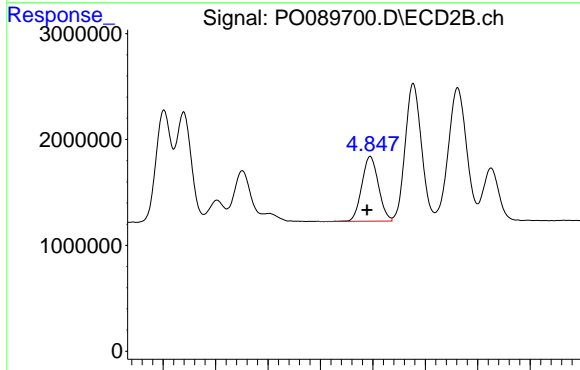
R.T.: 4.670 min
 Delta R.T.: 0.001 min
 Response: 9821680
 Conc: 531.29 ng/ml



#13 AR-1232-3

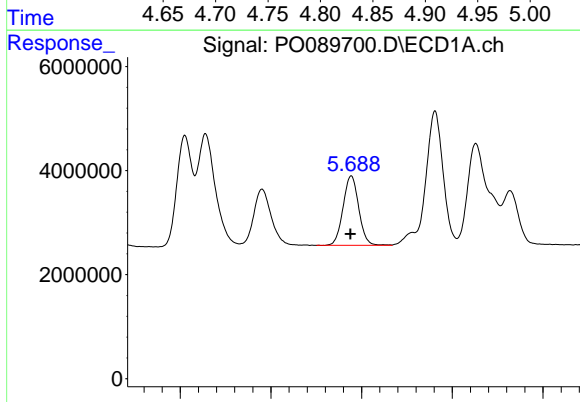
R.T.: 5.528 min
 Delta R.T.: 0.001 min
 Response: 29354295
 Conc: 653.22 ng/ml

Instrument :
 ECD_O
 ClientSampleId :
 AR1248CCC500



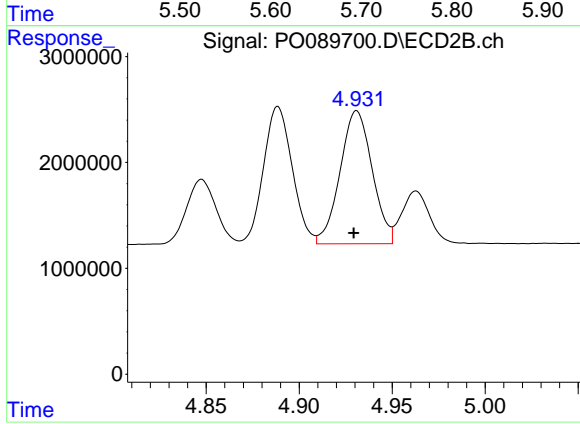
#13 AR-1232-3

R.T.: 4.848 min
 Delta R.T.: 0.003 min
 Response: 6717997
 Conc: 703.73 ng/ml



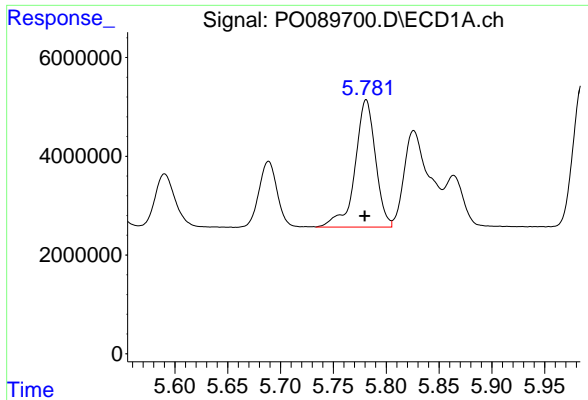
#14 AR-1232-4

R.T.: 5.689 min
 Delta R.T.: 0.000 min
 Response: 15980231
 Conc: 737.39 ng/ml



#14 AR-1232-4

R.T.: 4.931 min
 Delta R.T.: 0.001 min
 Response: 15112923
 Conc: 1734.45 ng/ml

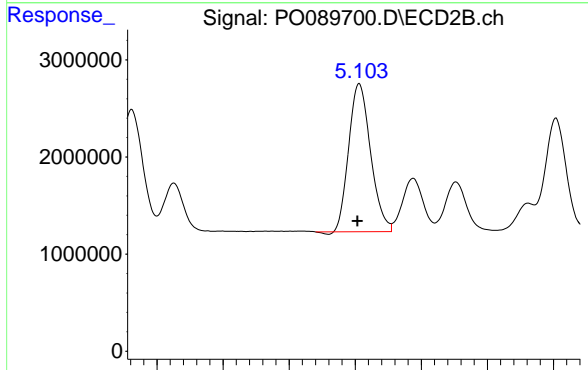


#15 AR-1232-5

R.T.: 5.781 min
 Delta R.T.: 0.001 min
 Response: 34759133
 Conc: 2015.16 ng/ml

Instrument :
 ECD_O
 ClientSampleId :
 AR1248CCC500

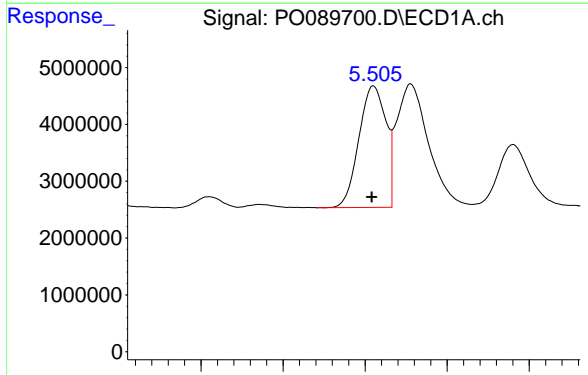
Time



#15 AR-1232-5

R.T.: 5.103 min
 Delta R.T.: 0.002 min
 Response: 17491638
 Conc: 1791.12 ng/ml

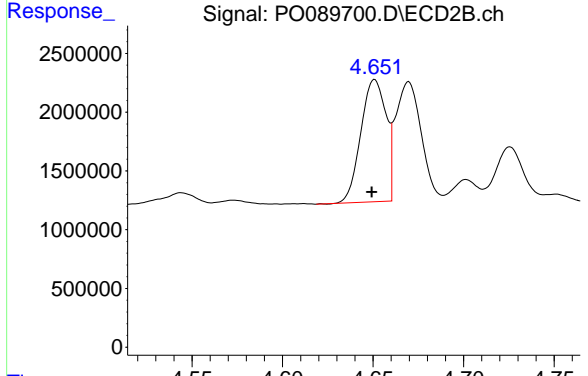
Time



#16 AR-1242-1

R.T.: 5.505 min
 Delta R.T.: 0.001 min
 Response: 24447230
 Conc: 397.19 ng/ml

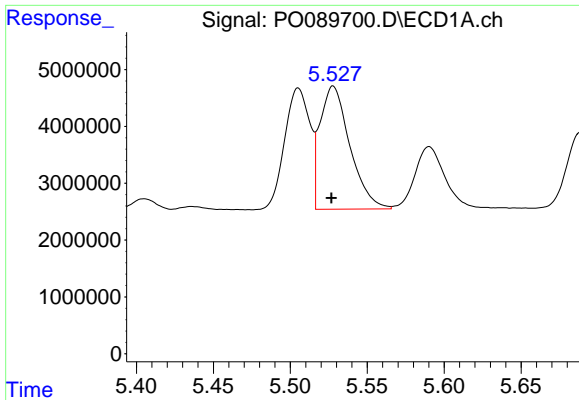
Time



#16 AR-1242-1

R.T.: 4.651 min
 Delta R.T.: 0.002 min
 Response: 10088961
 Conc: 373.80 ng/ml

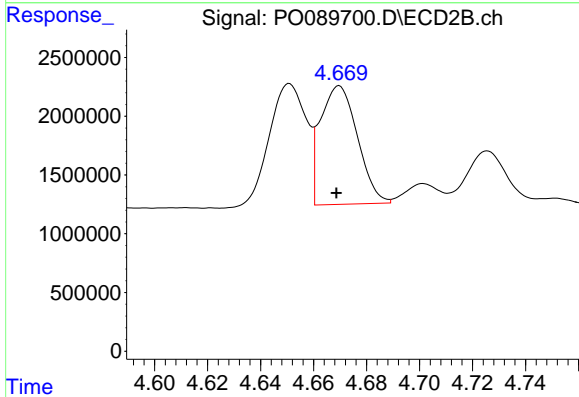
Time



#17 AR-1242-2

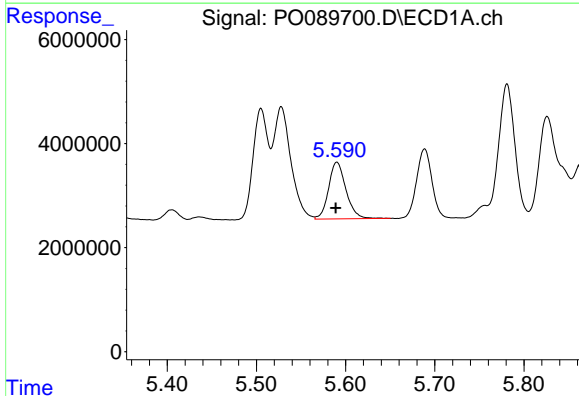
R.T.: 5.528 min
 Delta R.T.: 0.001 min
 Response: 29354295
 Conc: 331.72 ng/ml

Instrument :
 ECD_O
 ClientSampleId :
 AR1248CCC500



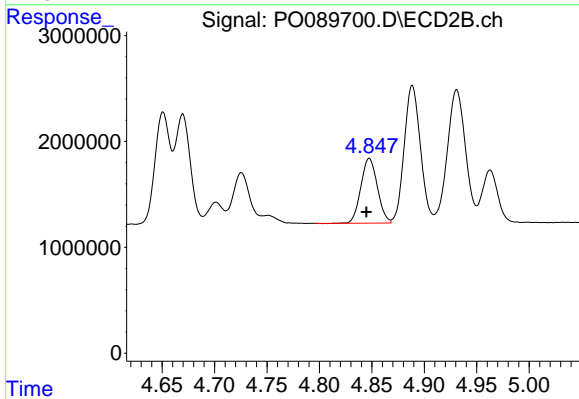
#17 AR-1242-2

R.T.: 4.670 min
 Delta R.T.: 0.001 min
 Response: 9821680
 Conc: 272.75 ng/ml



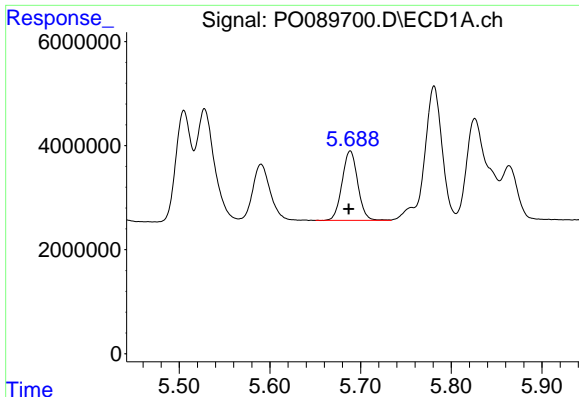
#18 AR-1242-3

R.T.: 5.590 min
 Delta R.T.: 0.001 min
 Response: 14772418
 Conc: 266.60 ng/ml



#18 AR-1242-3

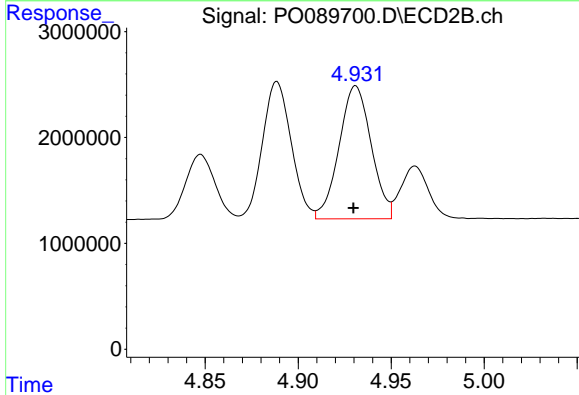
R.T.: 4.848 min
 Delta R.T.: 0.003 min
 Response: 6717997
 Conc: 349.27 ng/ml



#19 AR-1242-4

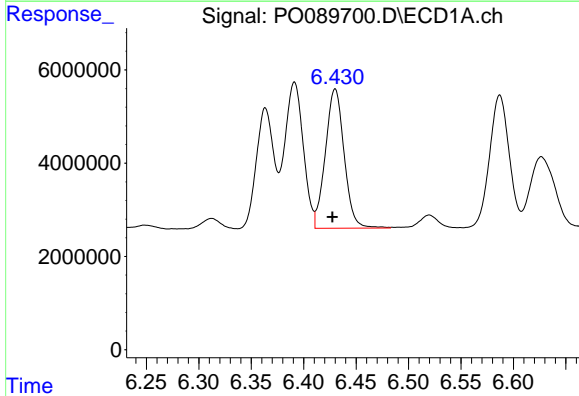
R.T.: 5.689 min
 Delta R.T.: 0.002 min
 Response: 15980231
 Conc: 371.28 ng/ml

Instrument :
 ECD_O
 ClientSampleId :
 AR1248CCC500



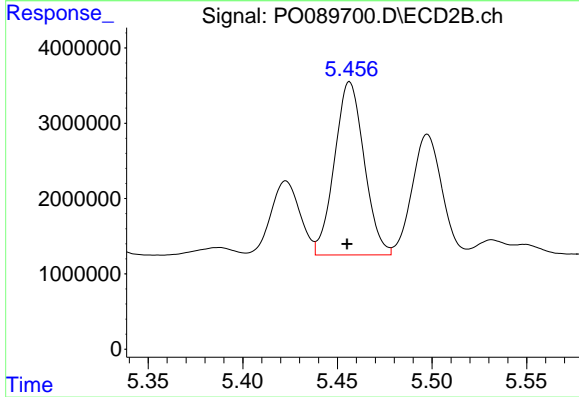
#19 AR-1242-4

R.T.: 4.931 min
 Delta R.T.: 0.001 min
 Response: 15112923
 Conc: 780.34 ng/ml



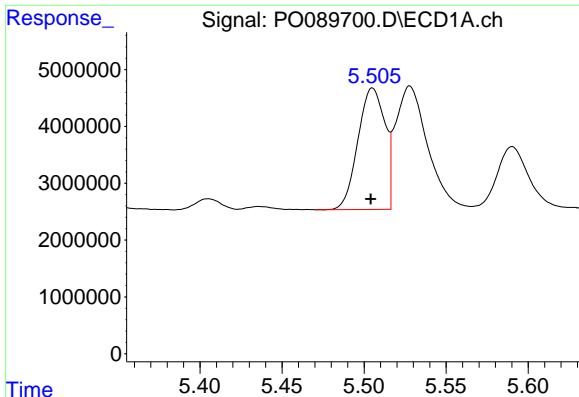
#20 AR-1242-5

R.T.: 6.430 min
 Delta R.T.: 0.003 min
 Response: 37222846
 Conc: 900.64 ng/ml



#20 AR-1242-5

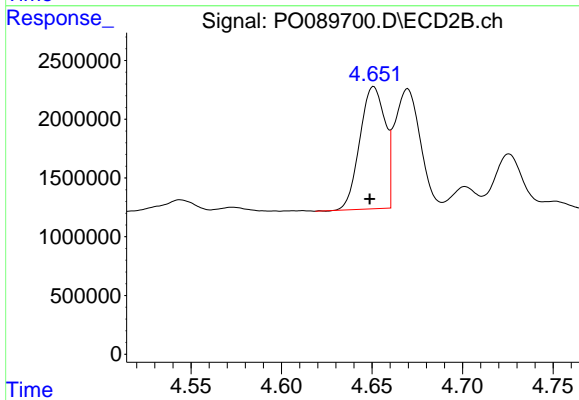
R.T.: 5.457 min
 Delta R.T.: 0.001 min
 Response: 25090354
 Conc: 1041.19 ng/ml



#21 AR-1248-1

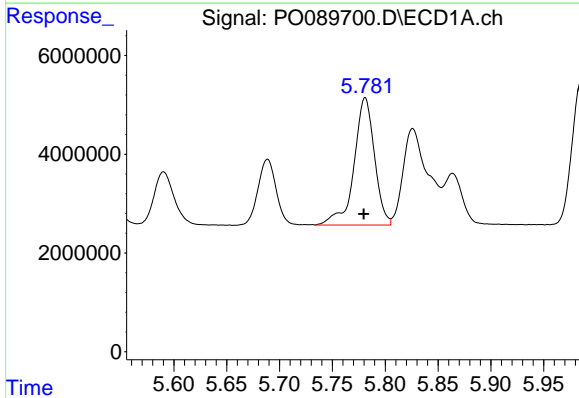
R.T.: 5.505 min
 Delta R.T.: 0.001 min
 Response: 24447230
 Conc: 537.45 ng/ml

Instrument :
 ECD_O
 ClientSampleId :
 AR1248CCC500



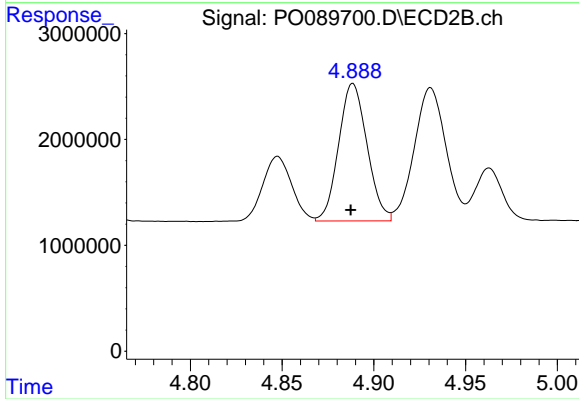
#21 AR-1248-1

R.T.: 4.651 min
 Delta R.T.: 0.002 min
 Response: 10088961
 Conc: 516.49 ng/ml



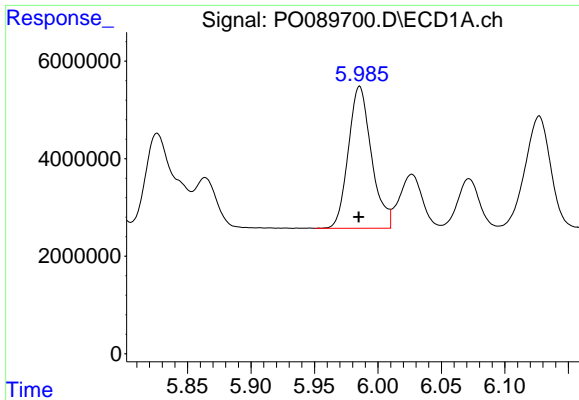
#22 AR-1248-2

R.T.: 5.781 min
 Delta R.T.: 0.001 min
 Response: 34759133
 Conc: 537.95 ng/ml



#22 AR-1248-2

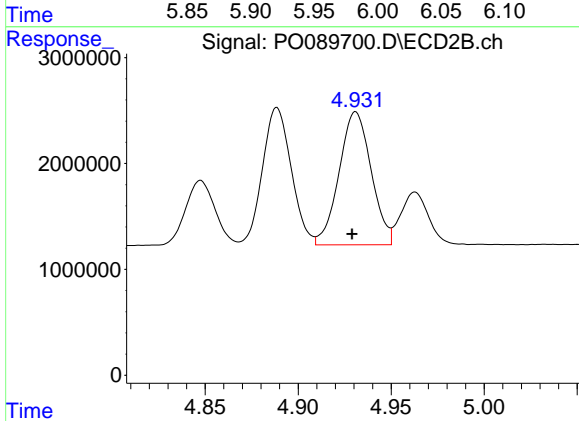
R.T.: 4.889 min
 Delta R.T.: 0.001 min
 Response: 14006981
 Conc: 516.97 ng/ml



#23 AR-1248-3

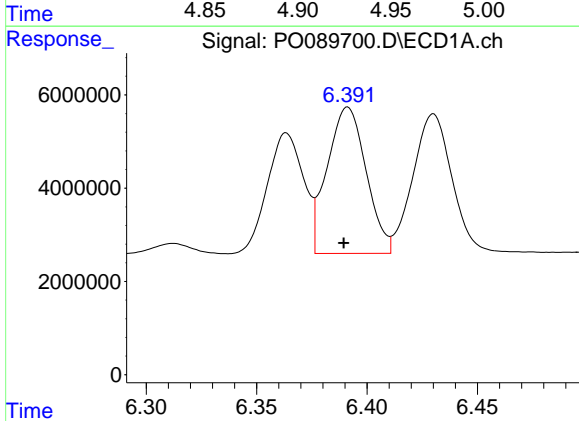
R.T.: 5.986 min
 Delta R.T.: 0.000 min
 Response: 36863991
 Conc: 541.31 ng/ml

Instrument :
 ECD_O
 ClientSampleId :
 AR1248CCC500



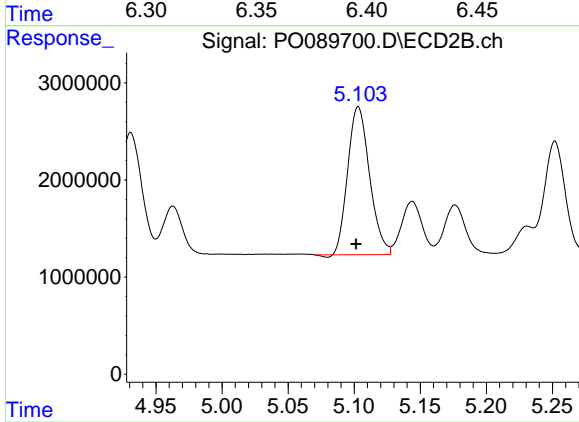
#23 AR-1248-3

R.T.: 4.931 min
 Delta R.T.: 0.002 min
 Response: 15112923
 Conc: 529.61 ng/ml



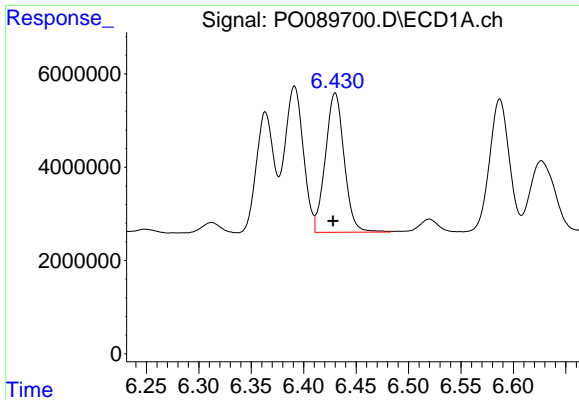
#24 AR-1248-4

R.T.: 6.391 min
 Delta R.T.: 0.002 min
 Response: 38500630
 Conc: 533.19 ng/ml



#24 AR-1248-4

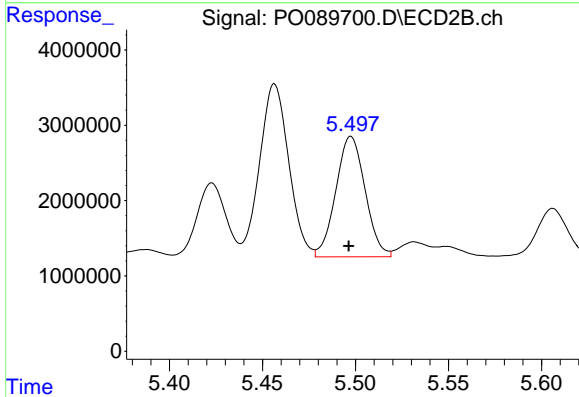
R.T.: 5.103 min
 Delta R.T.: 0.002 min
 Response: 17491638
 Conc: 520.78 ng/ml



#25 AR-1248-5

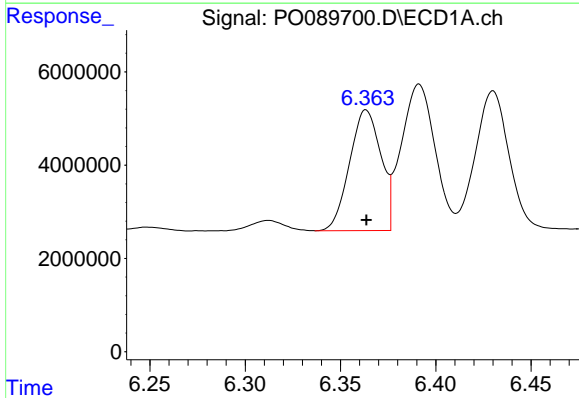
R.T.: 6.430 min
 Delta R.T.: 0.002 min
 Response: 37222846
 Conc: 533.73 ng/ml

Instrument :
 ECD_O
 ClientSampleId :
 AR1248CCC500



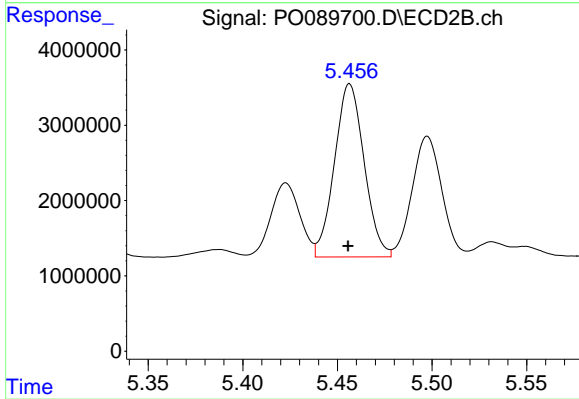
#25 AR-1248-5

R.T.: 5.498 min
 Delta R.T.: 0.001 min
 Response: 17537597
 Conc: 538.39 ng/ml



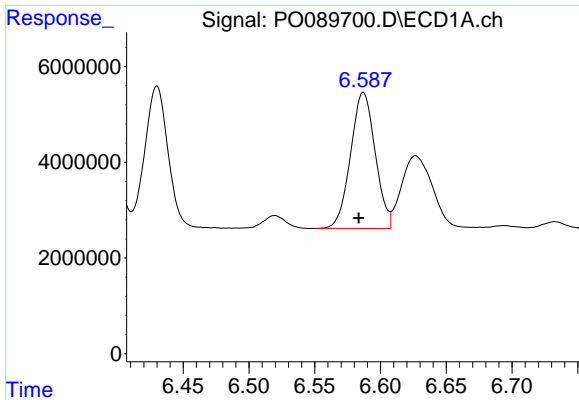
#26 AR-1254-1

R.T.: 6.363 min
 Delta R.T.: 0.000 min
 Response: 29595754
 Conc: 405.66 ng/ml



#26 AR-1254-1

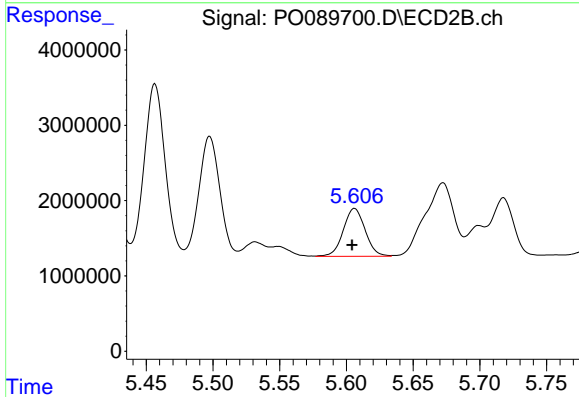
R.T.: 5.457 min
 Delta R.T.: 0.000 min
 Response: 25090354
 Conc: 498.81 ng/ml



#27 AR-1254-2

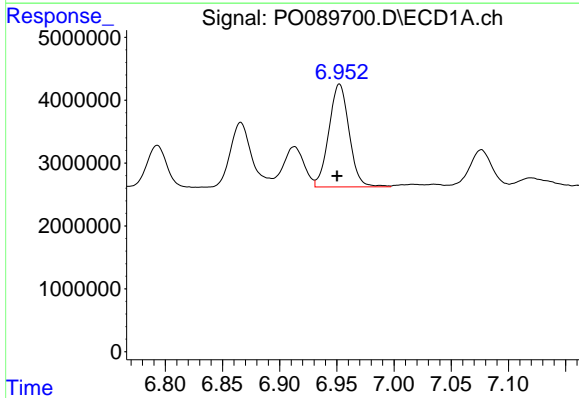
R.T.: 6.587 min
 Delta R.T.: 0.004 min
 Response: 37034570
 Conc: 348.29 ng/ml

Instrument :
 ECD_O
 ClientSampleId :
 AR1248CCC500



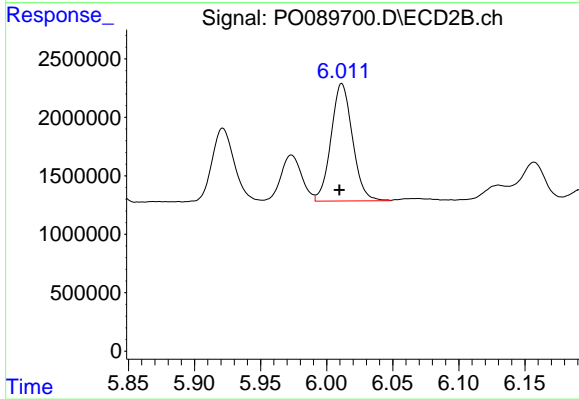
#27 AR-1254-2

R.T.: 5.606 min
 Delta R.T.: 0.002 min
 Response: 7259370
 Conc: 166.12 ng/ml



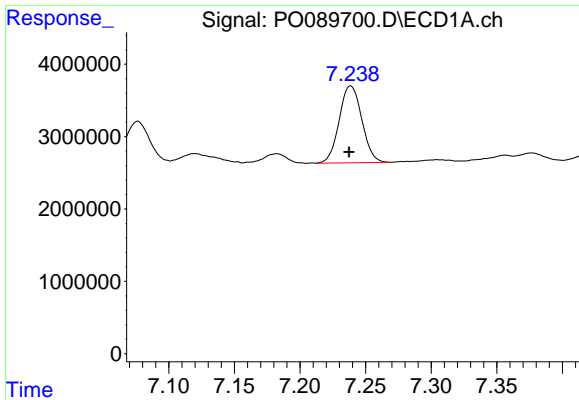
#28 AR-1254-3

R.T.: 6.952 min
 Delta R.T.: 0.002 min
 Response: 20155831
 Conc: 185.01 ng/ml



#28 AR-1254-3

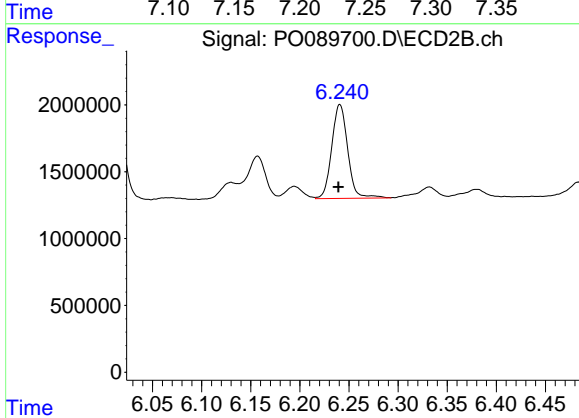
R.T.: 6.011 min
 Delta R.T.: 0.002 min
 Response: 11321395
 Conc: 159.35 ng/ml



#29 AR-1254-4

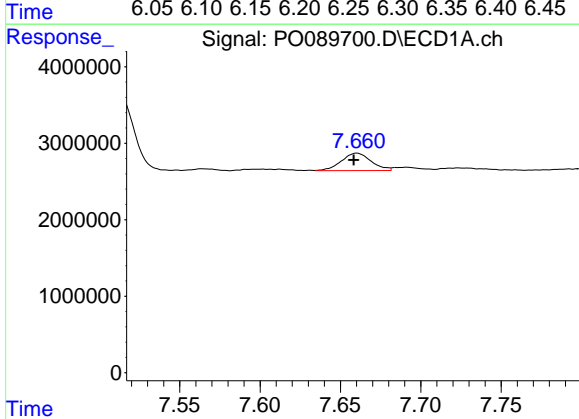
R.T.: 7.239 min
 Delta R.T.: 0.001 min
 Response: 12754047
 Conc: 171.45 ng/ml

Instrument :
 ECD_O
 ClientSampleId :
 AR1248CCC500



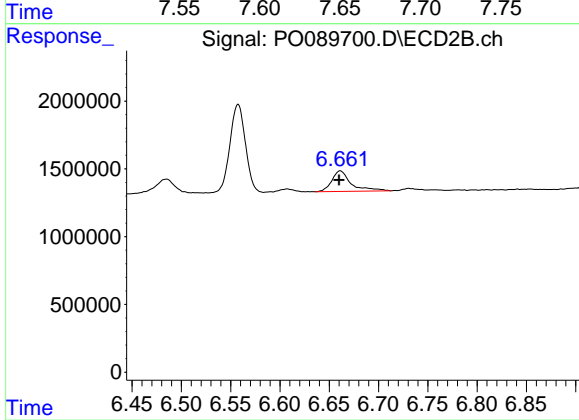
#29 AR-1254-4

R.T.: 6.241 min
 Delta R.T.: 0.001 min
 Response: 7964068
 Conc: 179.84 ng/ml



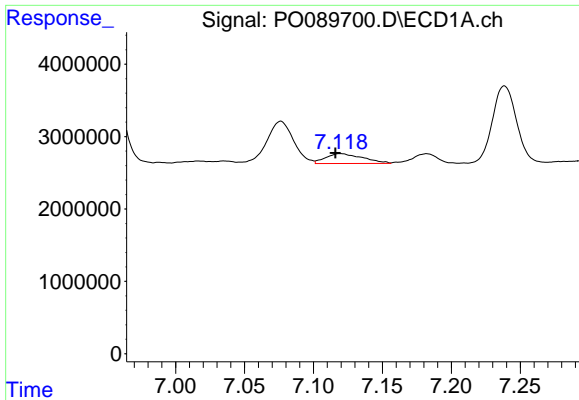
#30 AR-1254-5

R.T.: 7.660 min
 Delta R.T.: 0.002 min
 Response: 2920719
 Conc: 38.49 ng/ml



#30 AR-1254-5

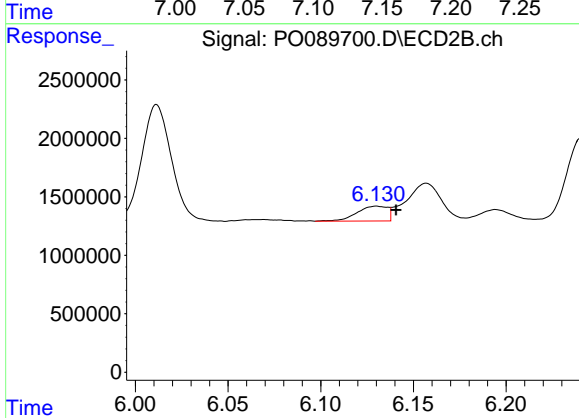
R.T.: 6.661 min
 Delta R.T.: 0.001 min
 Response: 2075100
 Conc: 34.22 ng/ml



#31 AR-1260-1

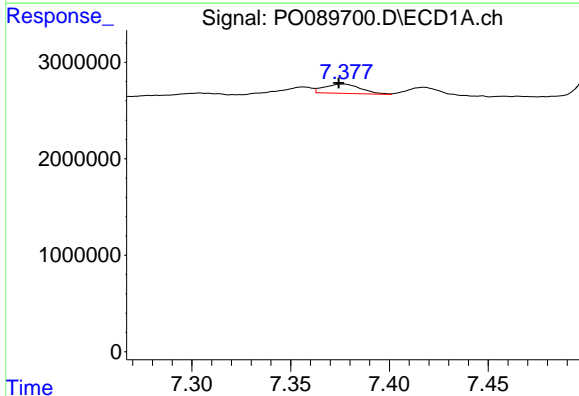
R.T.: 7.119 min
 Delta R.T.: 0.004 min
 Response: 2546669
 Conc: 32.42 ng/ml

Instrument :
 ECD_O
 ClientSampleId :
 AR1248CCC500



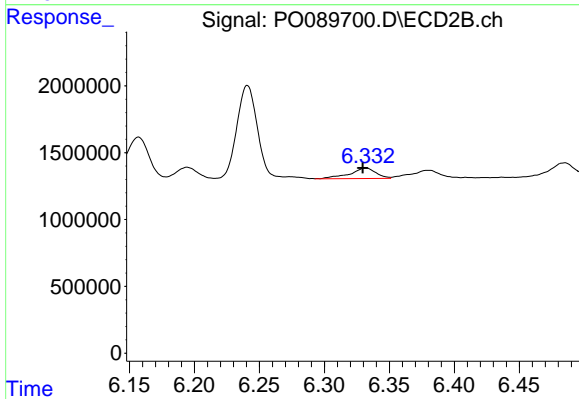
#31 AR-1260-1

R.T.: 6.130 min
 Delta R.T.: -0.011 min
 Response: 1472982
 Conc: 30.47 ng/ml



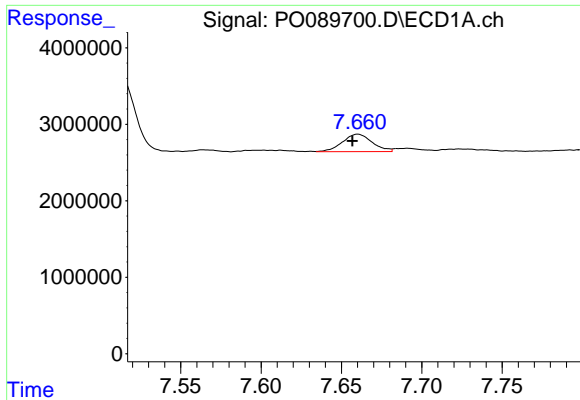
#32 AR-1260-2

R.T.: 7.376 min
 Delta R.T.: 0.002 min
 Response: 1224964
 Conc: 14.18 ng/ml



#32 AR-1260-2

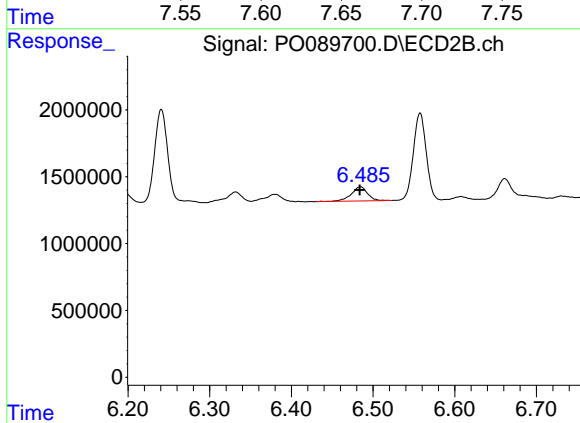
R.T.: 6.332 min
 Delta R.T.: 0.002 min
 Response: 1120540
 Conc: 19.11 ng/ml



#33 AR-1260-3

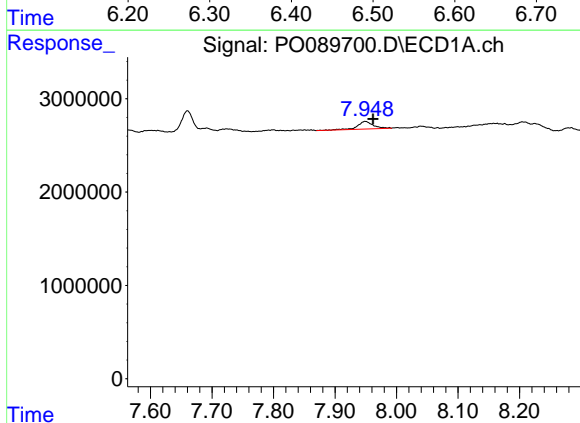
R.T.: 7.660 min
 Delta R.T.: 0.004 min
 Response: 2920719
 Conc: 31.33 ng/ml

Instrument :
 ECD_O
 ClientSampleId :
 AR1248CCC500



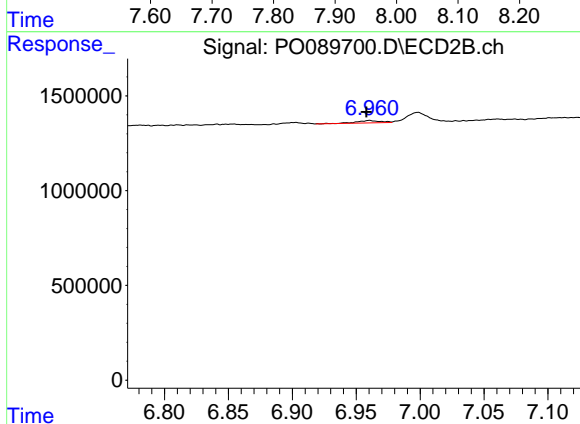
#33 AR-1260-3

R.T.: 6.485 min
 Delta R.T.: 0.001 min
 Response: 1485616
 Conc: 27.04 ng/ml



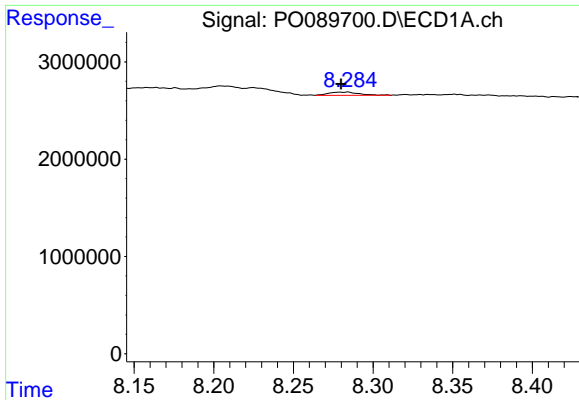
#34 AR-1260-4

R.T.: 7.949 min
 Delta R.T.: -0.013 min
 Response: 1498343
 Conc: 22.94 ng/ml



#34 AR-1260-4

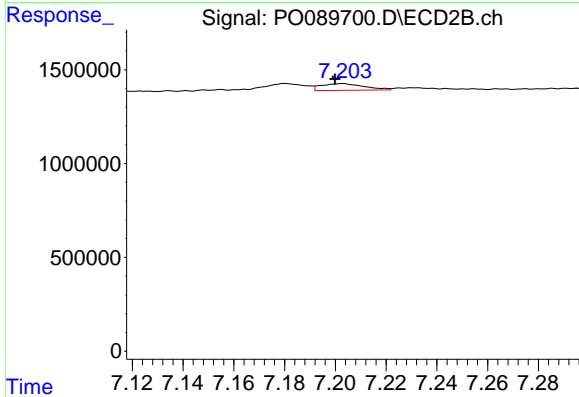
R.T.: 6.960 min
 Delta R.T.: 0.002 min
 Response: 161179
 Conc: 3.64 ng/ml



#35 AR-1260-5

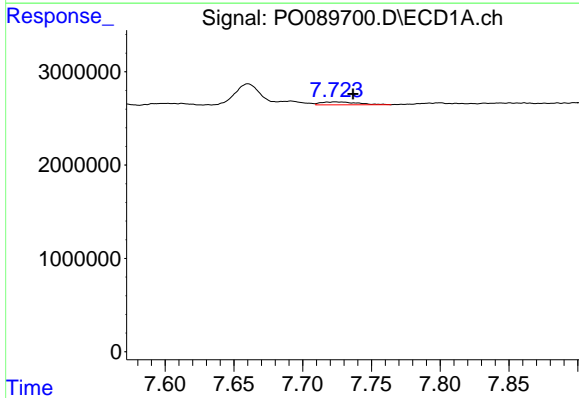
R.T.: 8.284 min
 Delta R.T.: 0.004 min
 Response: 434160
 Conc: 3.58 ng/ml

Instrument :
 ECD_O
 ClientSampleId :
 AR1248CCC500



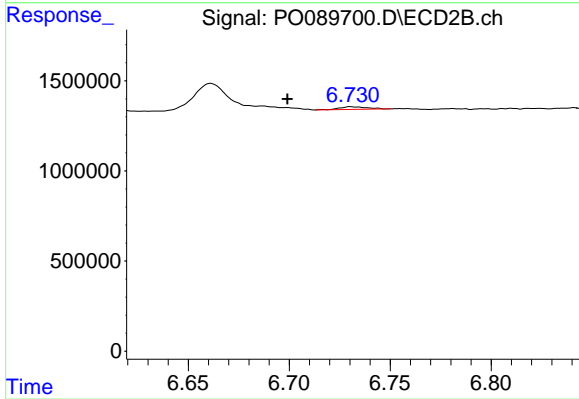
#35 AR-1260-5

R.T.: 7.203 min
 Delta R.T.: 0.003 min
 Response: 425157
 Conc: 4.14 ng/ml



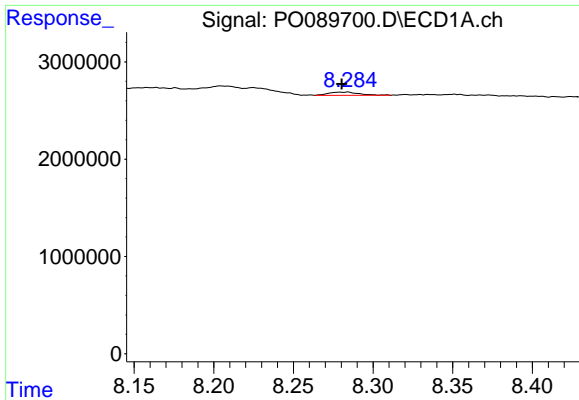
#36 AR-1262-1

R.T.: 7.724 min
 Delta R.T.: -0.013 min
 Response: 581090
 Conc: 6.48 ng/ml



#36 AR-1262-1

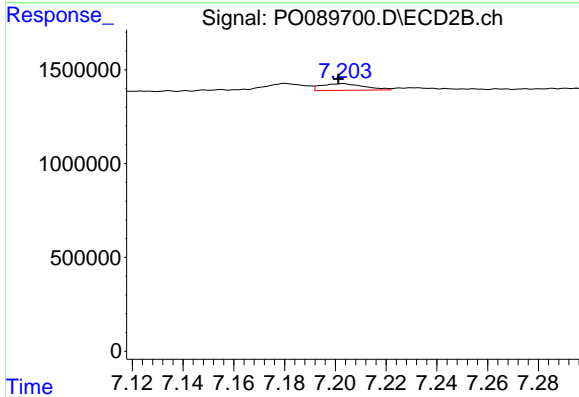
R.T.: 6.731 min
 Delta R.T.: 0.032 min
 Response: 138120
 Conc: 2.16 ng/ml



#37 AR-1262-2

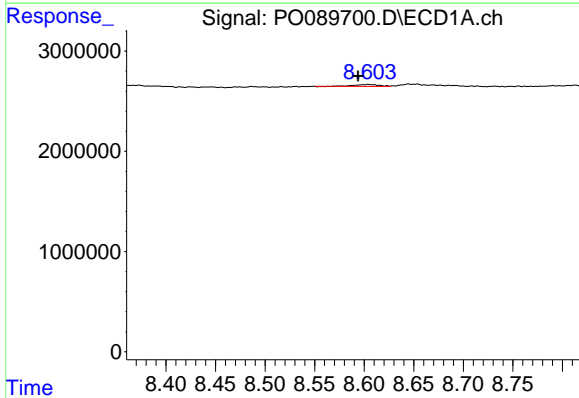
R.T.: 8.284 min
 Delta R.T.: 0.004 min
 Response: 434160
 Conc: 3.07 ng/ml

Instrument :
 ECD_O
 ClientSampleId :
 AR1248CCC500



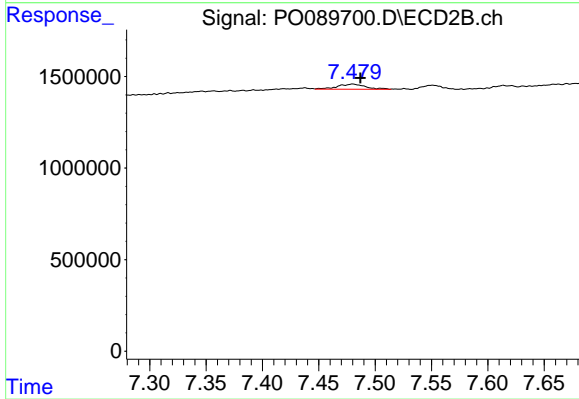
#37 AR-1262-2

R.T.: 7.203 min
 Delta R.T.: 0.002 min
 Response: 425157
 Conc: 3.73 ng/ml



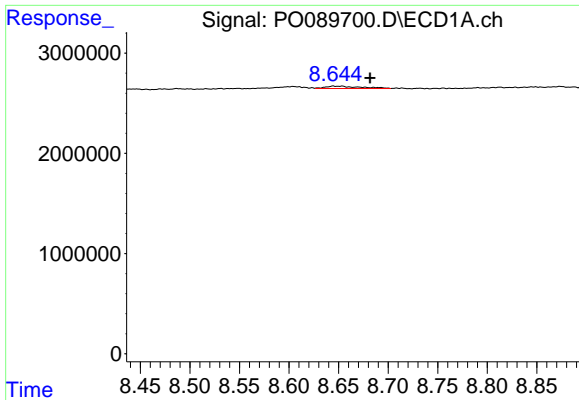
#38 AR-1262-3

R.T.: 8.604 min
 Delta R.T.: 0.010 min
 Response: 319635
 Conc: 3.24 ng/ml



#38 AR-1262-3

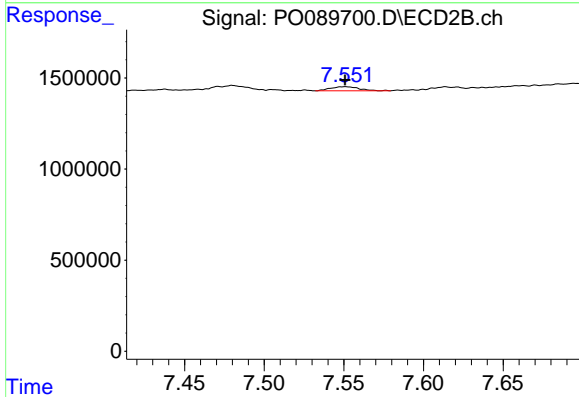
R.T.: 7.480 min
 Delta R.T.: -0.007 min
 Response: 492852
 Conc: 11.21 ng/ml



#39 AR-1262-4

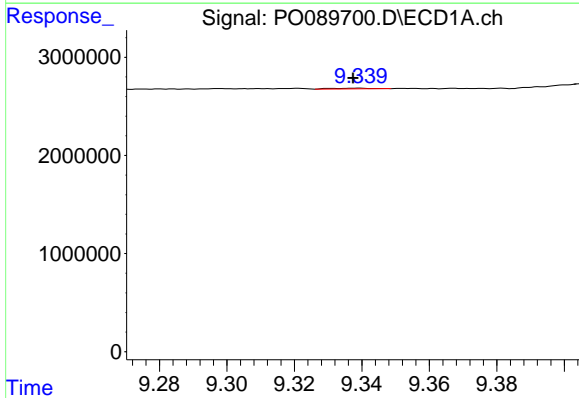
R.T.: 8.645 min
 Delta R.T.: -0.037 min
 Response: 587245
 Conc: 13.70 ng/ml

Instrument :
 ECD_O
 ClientSampleId :
 AR1248CCC500



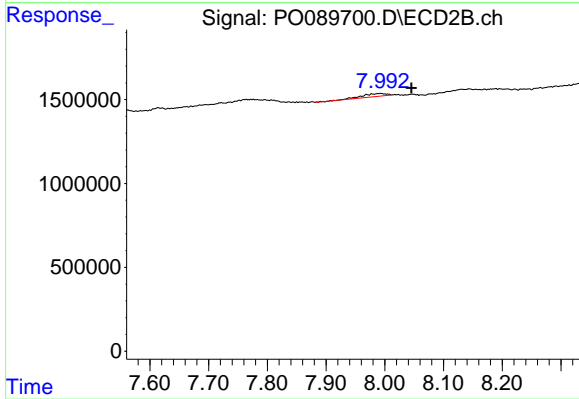
#39 AR-1262-4

R.T.: 7.551 min
 Delta R.T.: 0.000 min
 Response: 288441
 Conc: 3.53 ng/ml



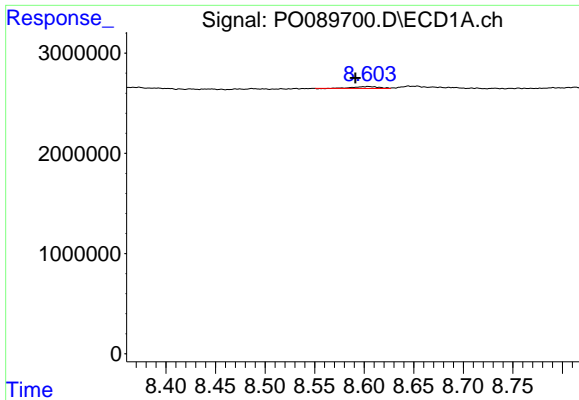
#40 AR-1262-5

R.T.: 9.339 min
 Delta R.T.: 0.002 min
 Response: 58897
 Conc: 1.15 ng/ml



#40 AR-1262-5

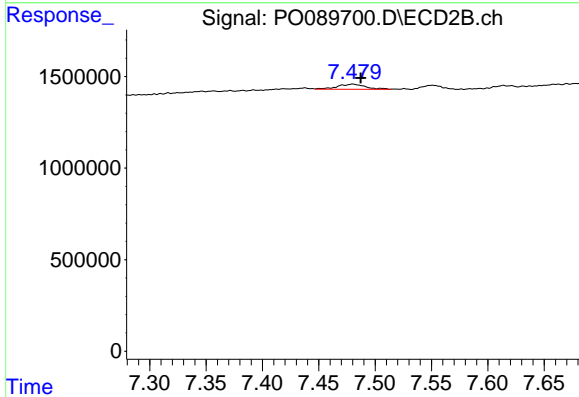
R.T.: 7.993 min
 Delta R.T.: -0.052 min
 Response: 534610
 Conc: 14.69 ng/ml



#41 AR-1268-1

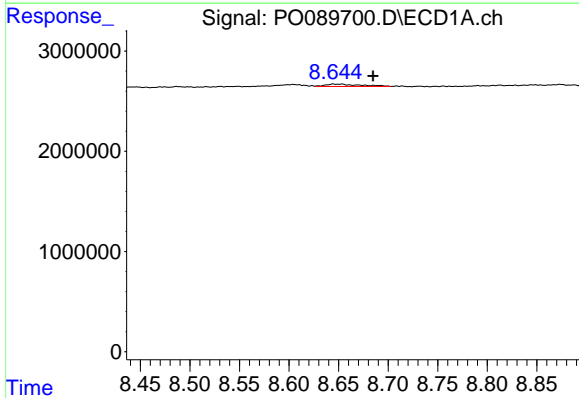
R.T.: 8.604 min
 Delta R.T.: 0.013 min
 Response: 319635
 Conc: 1.94 ng/ml

Instrument :
 ECD_O
 ClientSampleId :
 AR1248CCC500



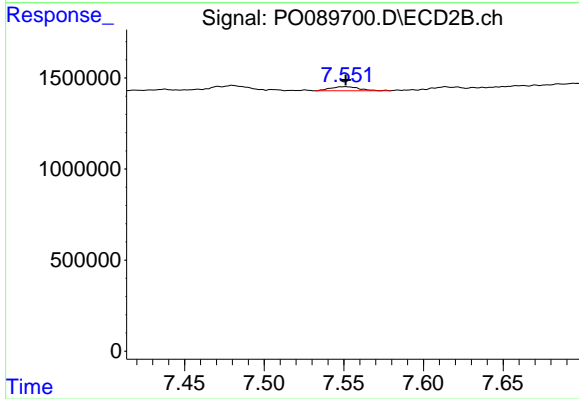
#41 AR-1268-1

R.T.: 7.480 min
 Delta R.T.: -0.007 min
 Response: 492852
 Conc: 3.76 ng/ml



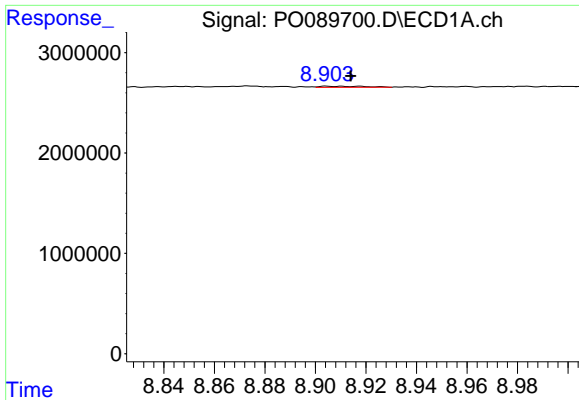
#42 AR-1268-2

R.T.: 8.645 min
 Delta R.T.: -0.040 min
 Response: 587245
 Conc: 3.99 ng/ml



#42 AR-1268-2

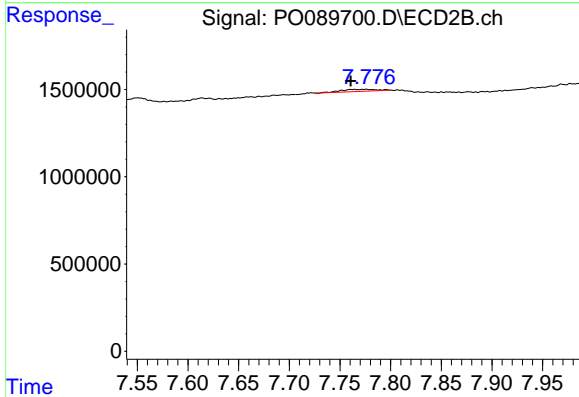
R.T.: 7.551 min
 Delta R.T.: 0.000 min
 Response: 288441
 Conc: 2.52 ng/ml



#43 AR-1268-3

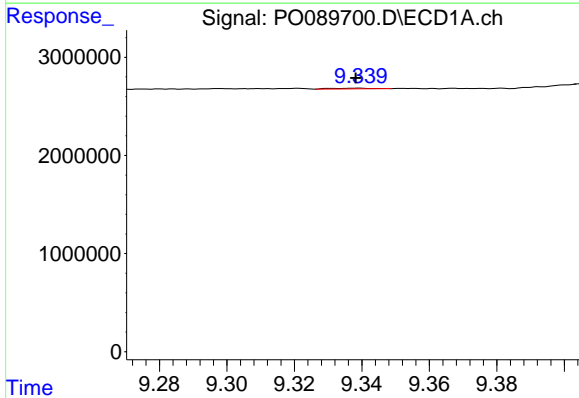
R.T.: 8.918 min
 Delta R.T.: 0.004 min
 Response: 139017
 Conc: 1.13 ng/ml

Instrument :
 ECD_O
 ClientSampleId :
 AR1248CCC500



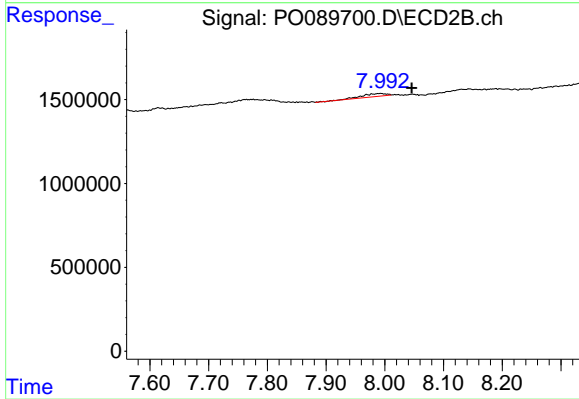
#43 AR-1268-3

R.T.: 7.776 min
 Delta R.T.: 0.015 min
 Response: 283164
 Conc: 2.94 ng/ml



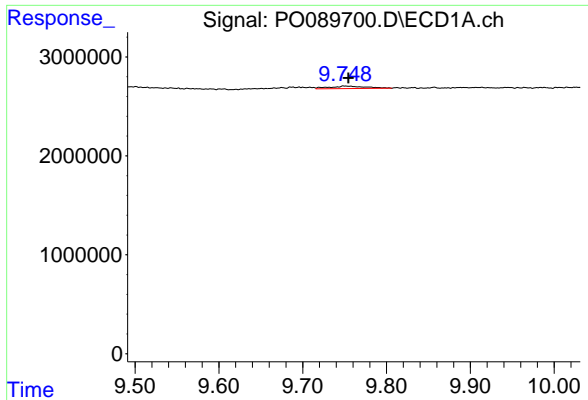
#44 AR-1268-4

R.T.: 9.339 min
 Delta R.T.: 0.000 min
 Response: 58897
 Conc: 1.05 ng/ml



#44 AR-1268-4

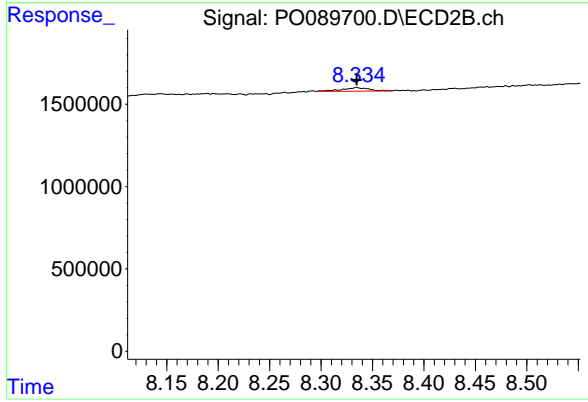
R.T.: 7.993 min
 Delta R.T.: -0.052 min
 Response: 534610
 Conc: 13.56 ng/ml



#45 AR-1268-5

R.T.: 9.749 min
 Delta R.T.: -0.005 min
 Response: 747173
 Conc: 1.95 ng/ml

Instrument :
 ECD_O
 ClientSampleId :
 AR1248CCC500



#45 AR-1268-5

R.T.: 8.335 min
 Delta R.T.: 0.000 min
 Response: 374084
 Conc: 1.23 ng/ml