

Data Path : Z:\pestpcbsrv\HPCHEM1\ECD_0\Data\PO100522\
 Data File : PO089723.D
 Signal(s) : Signal #1: ECD1A.ch Signal #2: ECD2B.ch
 Acq On : 05 Oct 2022 14:14
 Operator : YP/AJ
 Sample : N4928-14 10X
 Misc :
 ALS Vial : 51 Sample Multiplier: 1

Instrument :
 ECD_0
 ClientSampleId :
 SOM-2022-83A

Integration File signal 1: autoint1.e
 Integration File signal 2: autoint2.e
 Quant Time: Oct 05 18:16:02 2022
 Quant Method : Z:\pestpcbsrv\HPCHEM1\ECD_0\methods\PO100422.M
 Quant Title : GC EXTRACTABLES
 QLast Update : Wed Oct 05 06:04:42 2022
 Response via : Initial Calibration
 Integrator: ChemStation

Volume Inj. : 2 µl
 Signal #1 Phase : ZB-MR1 Signal #2 Phase: ZB-MR2
 Signal #1 Info : 30Mx0.32mmx 0.50µ Signal #2 Info : 30M x 0.32mm x 0.25µm

Compound	RT#1	RT#2	Resp#1	Resp#2	ng/ml	ng/ml
System Monitoring Compounds						
1) SA Tetrachlo...	4.335	3.560	4312558	1444232	1.659	1.599
2) SA Decachlor...	10.096	8.594	2472865	982738	2.300	1.237 #
Target Compounds						
3) L1 AR-1016-1	5.503	4.651	379276	61782	5.416	1.960 #
4) L1 AR-1016-2	5.541	4.651	510769	61782	5.061	1.453 #
5) L1 AR-1016-3	5.591	4.890f	240307	2573792	3.857	114.946 #
6) L1 AR-1016-4	0.000	4.890	0	2573792	N.D.	145.979 #
7) L1 AR-1016-5	5.985	5.105	3776389	1653804	80.683	68.049
8) L2 AR-1221-1	4.537	3.782	278376	129393	9.297	12.311 #
9) L2 AR-1221-2	0.000	3.815f	0	24650	N.D.	3.110 #
10) L2 AR-1221-3	0.000	3.988f	0	47629	N.D.	1.863 #
11) L3 AR-1232-1	0.000	3.988f	0	47629	N.D.	2.370 #
12) L3 AR-1232-2	5.025	4.651	630512	61782	26.644	3.342 #
13) L3 AR-1232-3	5.541	4.890f	510769	2573792	11.366	269.614 #
14) L3 AR-1232-4	0.000	4.932	0	924367	N.D.	106.086 #
15) L3 AR-1232-5	5.781	5.105	7278609	1653804	421.978	169.347 #
16) L4 AR-1242-1	5.503	4.651	379276	61782	6.162	2.289 #
17) L4 AR-1242-2	5.541	4.651	510769	61782	5.772	1.716 #
18) L4 AR-1242-3	5.591	4.890f	240307	2573792	4.337	133.813 #
19) L4 AR-1242-4	0.000	4.932	0	924367	N.D.	47.729 #
20) L4 AR-1242-5	6.432	5.459	3393073	6251513	82.099	259.422 #
21) L5 AR-1248-1	5.503	4.651	379276	61782	8.338	3.163 #
22) L5 AR-1248-2	5.781	4.890	7278609	2573792	112.647	94.994
23) L5 AR-1248-3	5.985	4.932	3776389	924367	55.453	32.393 #
24) L5 AR-1248-4	6.391	5.105	4968531	1653804	68.809	49.238 #
25) L5 AR-1248-5	6.432	5.500	3393073	820830	48.653	25.199 #
26) L6 AR-1254-1	6.365	5.459	9903846	6251513	135.749	124.282
27) L6 AR-1254-2	6.585	5.608	13932224	5280549	131.025	120.838
28) L6 AR-1254-3	6.952	6.013	11550604	6411694	106.021	90.246
29) L6 AR-1254-4	7.238	6.242	6197004	3211910	83.307	72.528
30) L6 AR-1254-5	7.660	6.663	5514603	3632741	72.673	59.900
31) L7 AR-1260-1	7.117	6.145	4884008	3217710	62.168	66.552
32) L7 AR-1260-2	7.375	6.333	3994604	2228836	46.229	38.008
33) L7 AR-1260-3	7.660	6.486	5514603	2293340	59.154	41.747 #
34) L7 AR-1260-4	7.947	6.961	1727628	188902	26.454	4.270 #
35) L7 AR-1260-5	8.283	7.205	675929	297709	5.568	2.902 #
36) L8 AR-1262-1	7.720	6.732	858961	252816	9.585	3.947 #
37) L8 AR-1262-2	8.283	7.205	675929	297709	4.782	2.609 #
38) L8 AR-1262-3	8.609	7.550f	382256	276735	3.871	6.296 #
39) L8 AR-1262-4	0.000	7.550	0	276735	N.D.	3.382 #
40) L8 AR-1262-5	0.000	7.996f	0	51632	N.D.	1.419 #
41) L9 AR-1268-1	8.609	7.550f	382256	276735	2.325	2.110

Data Path : Z:\pestpcbsrv\HPCHEM1\ECD_0\Data\PO100522\
 Data File : PO089723.D
 Signal(s) : Signal #1: ECD1A.ch Signal #2: ECD2B.ch
 Acq On : 05 Oct 2022 14:14
 Operator : YP/AJ
 Sample : N4928-14 10X
 Misc :
 ALS Vial : 51 Sample Multiplier: 1

Instrument :
 ECD_0
 ClientSampleId :
 SOM-2022-83A

Integration File signal 1: autoint1.e
 Integration File signal 2: autoint2.e
 Quant Time: Oct 05 18:16:02 2022
 Quant Method : Z:\pestpcbsrv\HPCHEM1\ECD_0\methods\PO100422.M
 Quant Title : GC EXTRACTABLES
 QLast Update : Wed Oct 05 06:04:42 2022
 Response via : Initial Calibration
 Integrator: ChemStation

Volume Inj. : 2 µl
 Signal #1 Phase : ZB-MR1 Signal #2 Phase: ZB-MR2
 Signal #1 Info : 30Mx0.32mmx 0.50µ Signal #2 Info : 30M x 0.32mm x 0.25µm

	Compound	RT#1	RT#2	Resp#1	Resp#2	ng/ml	ng/ml
42)	L9 AR-1268-2	0.000	7.550	0	276735	N.D.	2.418 #
43)	L9 AR-1268-3	0.000	7.765	0	363880	N.D.	3.777 #
44)	L9 AR-1268-4	0.000	7.996f	0	51632	N.D.	1.310 #
45)	L9 AR-1268-5	9.772	8.345	388922	193456	1.013	0.635 #

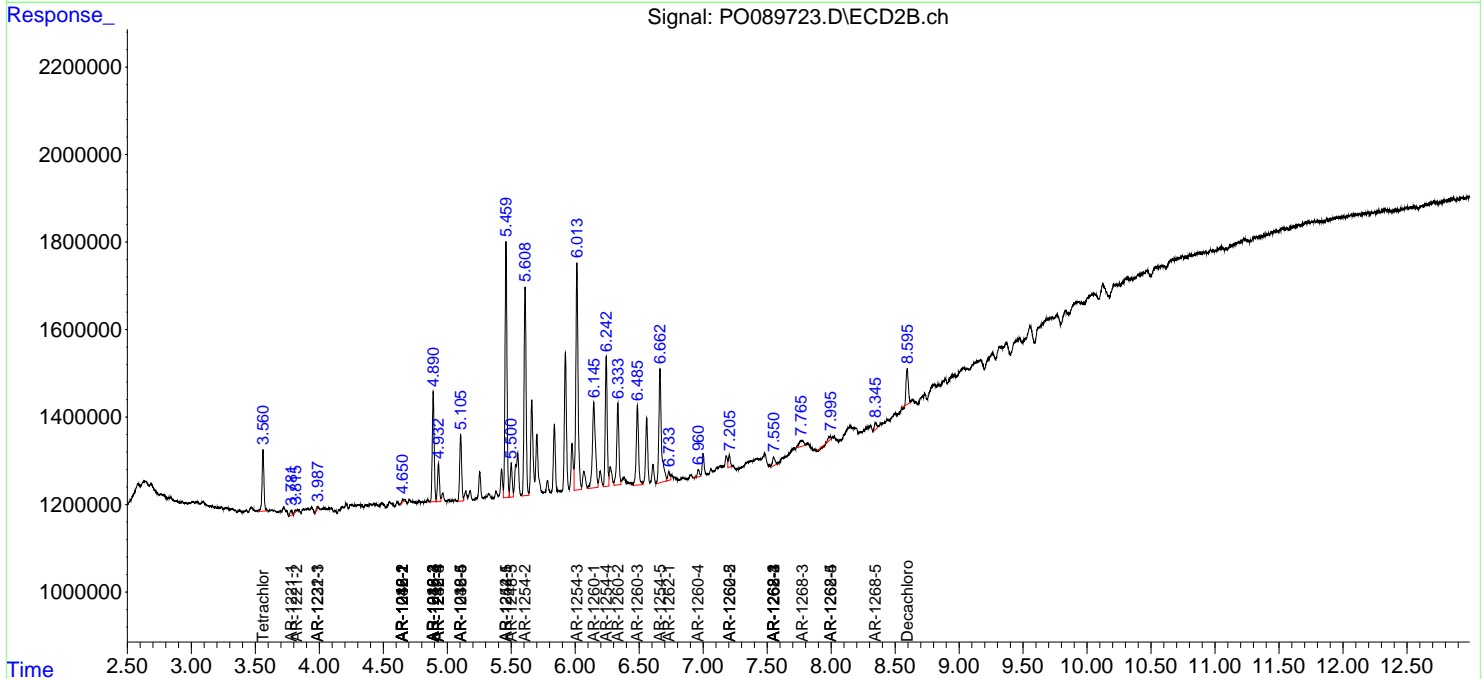
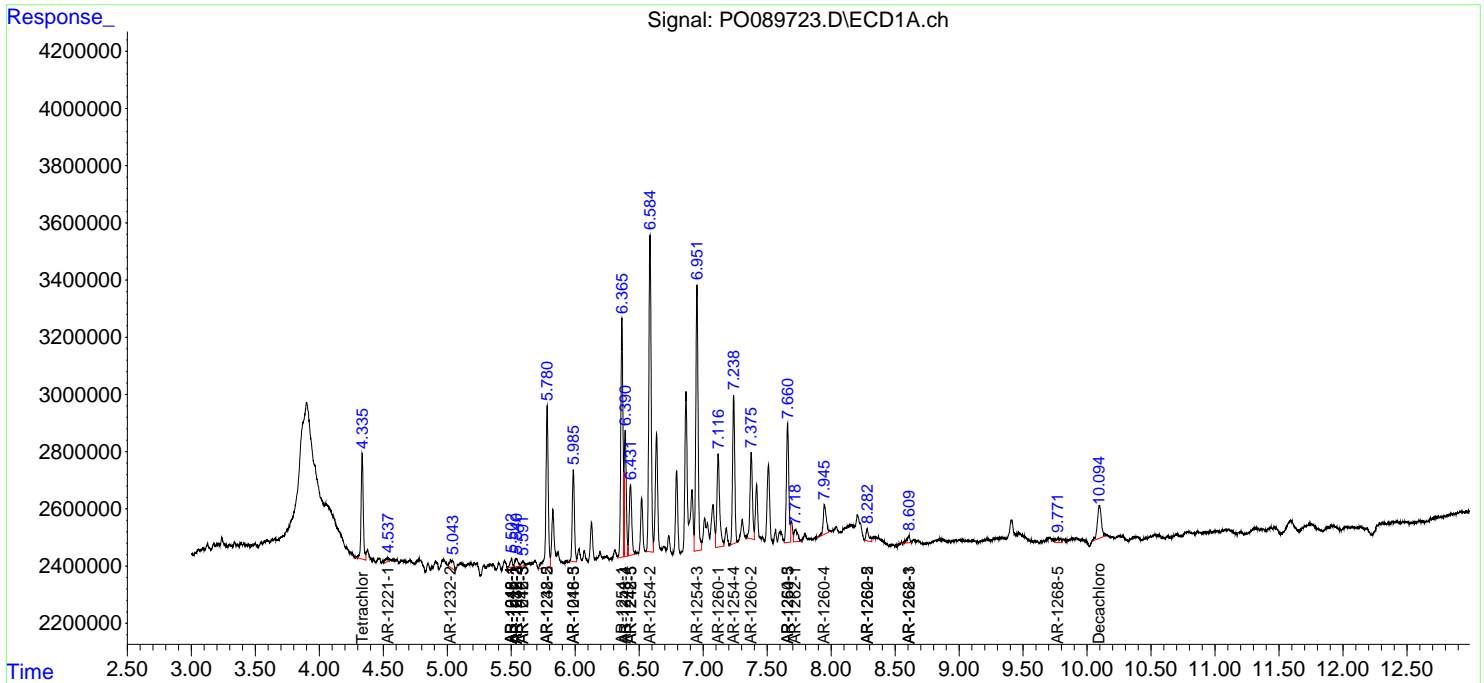
(f)=RT Delta > 1/2 Window (#)=Amounts differ by > 25% (m)=manual int.

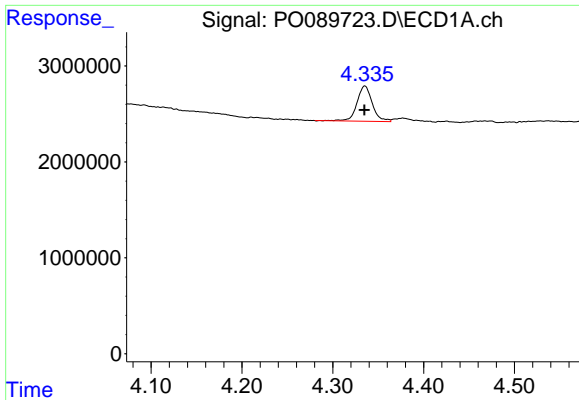
Data Path : Z:\pestpcbsrv\HPCHEM1\ECD_O\Data\PO100522\
 Data File : PO089723.D
 Signal(s) : Signal #1: ECD1A.ch Signal #2: ECD2B.ch
 Acq On : 05 Oct 2022 14:14
 Operator : YP/AJ
 Sample : N4928-14 10X
 Misc :
 ALS Vial : 51 Sample Multiplier: 1

Instrument :
 ECD_O
 ClientSampleId :
 SOM-2022-83A

Integration File signal 1: autoint1.e
 Integration File signal 2: autoint2.e
 Quant Time: Oct 05 18:16:02 2022
 Quant Method : Z:\pestpcbsrv\HPCHEM1\ECD_O\methods\PO100422.M
 Quant Title : GC EXTRACTABLES
 QLast Update : Wed Oct 05 06:04:42 2022
 Response via : Initial Calibration
 Integrator: ChemStation

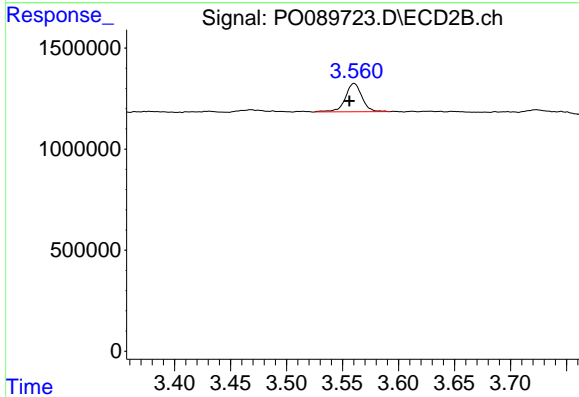
Volume Inj. : 2 µl
 Signal #1 Phase : ZB-MR1 Signal #2 Phase: ZB-MR2
 Signal #1 Info : 30Mx0.32mmx 0.50µ Signal #2 Info : 30M x 0.32mm x 0.25µm



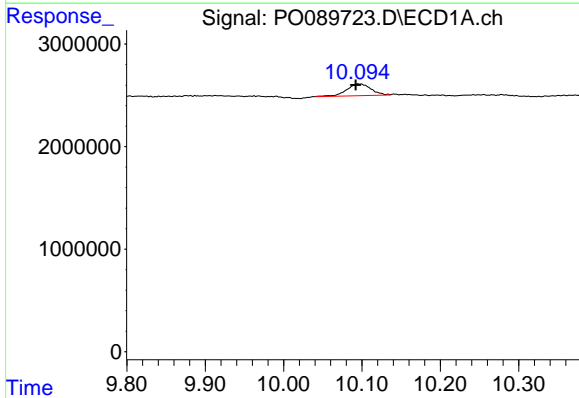


#1 Tetrachloro-m-xylene
 R.T.: 4.335 min
 Delta R.T.: 0.000 min
 Response: 4312558
 Conc: 1.66 ng/ml

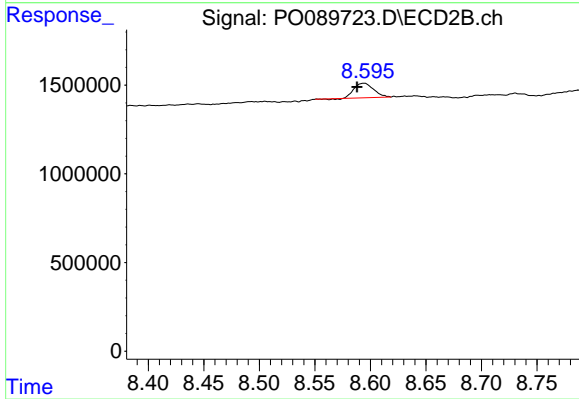
Instrument :
 ECD_O
 ClientSampleId :
 SOM-2022-83A



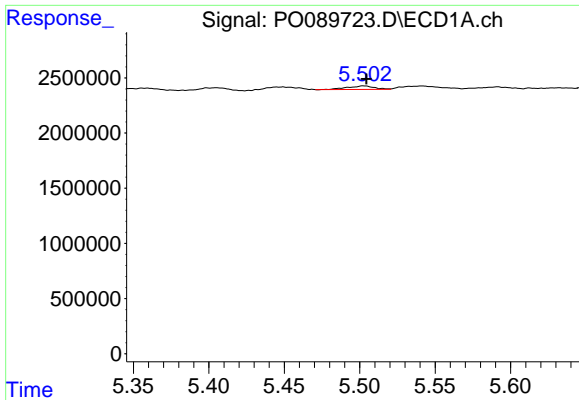
#1 Tetrachloro-m-xylene
 R.T.: 3.560 min
 Delta R.T.: 0.004 min
 Response: 1444232
 Conc: 1.60 ng/ml



#2 Decachlorobiphenyl
 R.T.: 10.096 min
 Delta R.T.: 0.004 min
 Response: 2472865
 Conc: 2.30 ng/ml



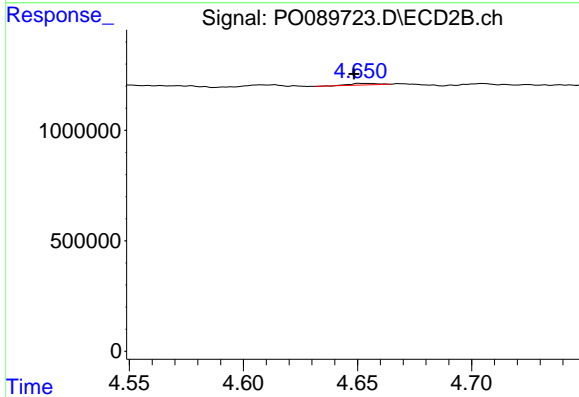
#2 Decachlorobiphenyl
 R.T.: 8.594 min
 Delta R.T.: 0.006 min
 Response: 982738
 Conc: 1.24 ng/ml



#3 AR-1016-1

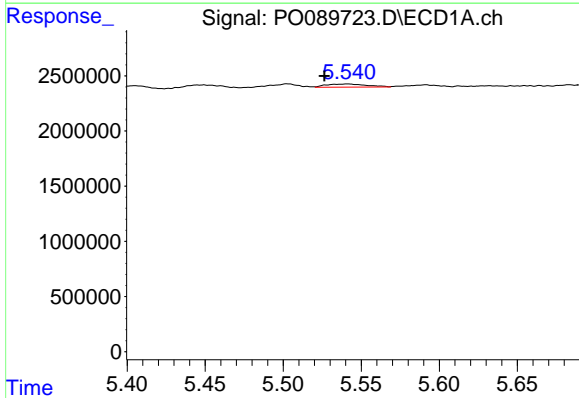
R.T.: 5.503 min
 Delta R.T.: -0.002 min
 Response: 379276
 Conc: 5.42 ng/ml

Instrument :
 ECD_O
 ClientSampleId :
 SOM-2022-83A



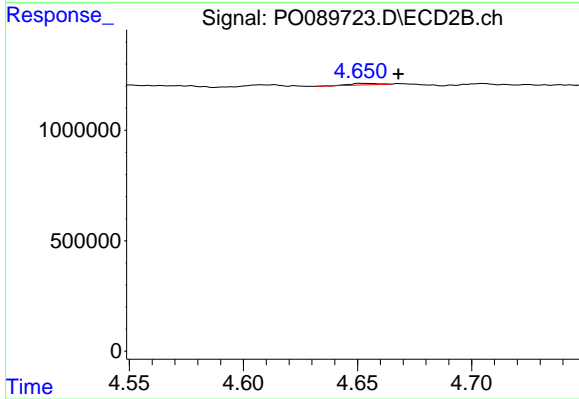
#3 AR-1016-1

R.T.: 4.651 min
 Delta R.T.: 0.002 min
 Response: 61782
 Conc: 1.96 ng/ml



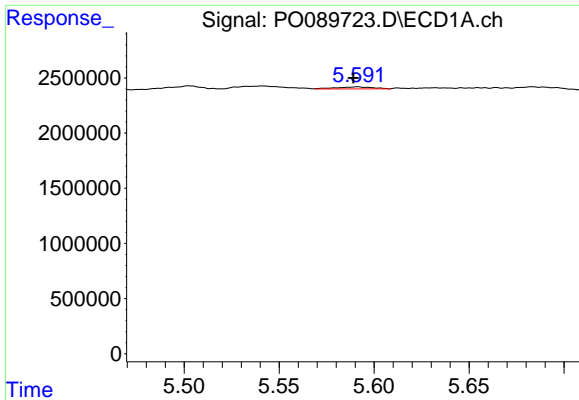
#4 AR-1016-2

R.T.: 5.541 min
 Delta R.T.: 0.015 min
 Response: 510769
 Conc: 5.06 ng/ml



#4 AR-1016-2

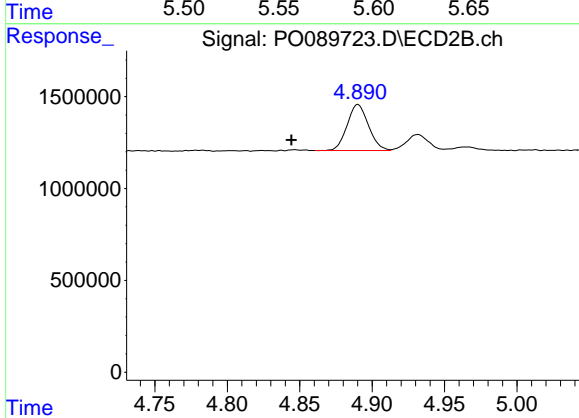
R.T.: 4.651 min
 Delta R.T.: -0.017 min
 Response: 61782
 Conc: 1.45 ng/ml



#5 AR-1016-3

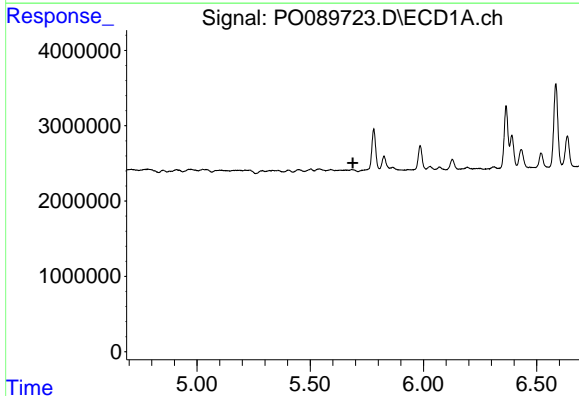
R.T.: 5.591 min
 Delta R.T.: 0.002 min
 Response: 240307
 Conc: 3.86 ng/ml

Instrument :
 ECD_O
 ClientSampleId :
 SOM-2022-83A



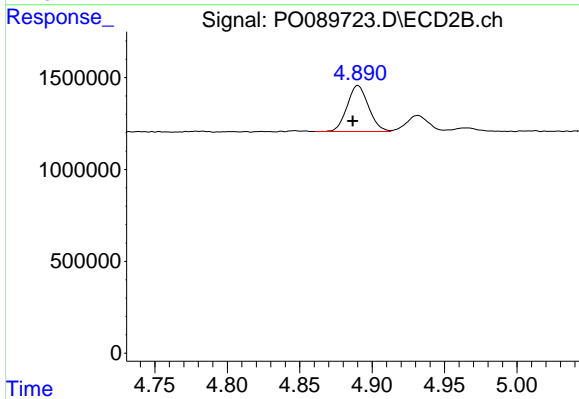
#5 AR-1016-3

R.T.: 4.890 min
 Delta R.T.: 0.046 min
 Response: 2573792
 Conc: 114.95 ng/ml



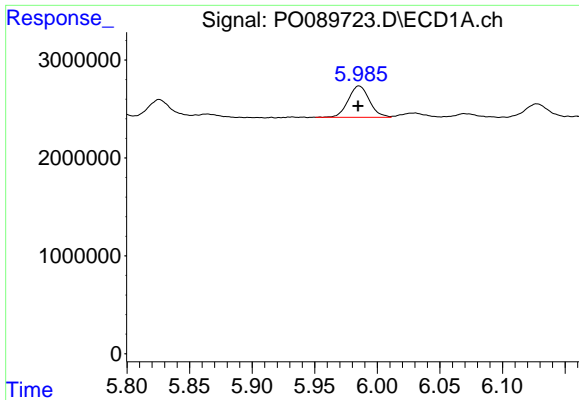
#6 AR-1016-4

R.T.: 0.000 min
 Exp R.T. : 5.688 min
 Response: 0
 Conc: N.D.



#6 AR-1016-4

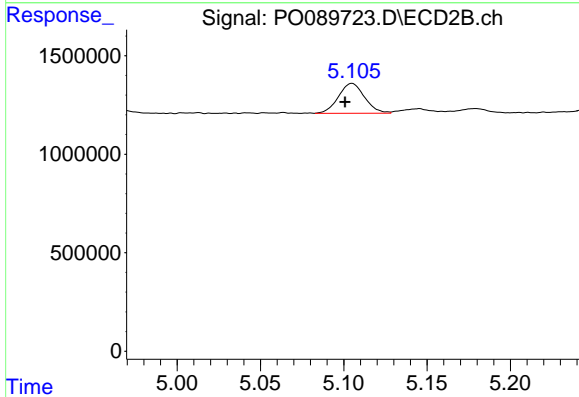
R.T.: 4.890 min
 Delta R.T.: 0.004 min
 Response: 2573792
 Conc: 145.98 ng/ml



#7 AR-1016-5

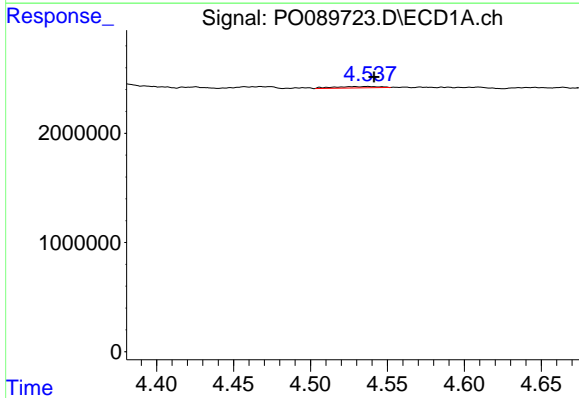
R.T.: 5.985 min
 Delta R.T.: 0.000 min
 Response: 3776389
 Conc: 80.68 ng/ml

Instrument :
 ECD_O
 ClientSampleId :
 SOM-2022-83A



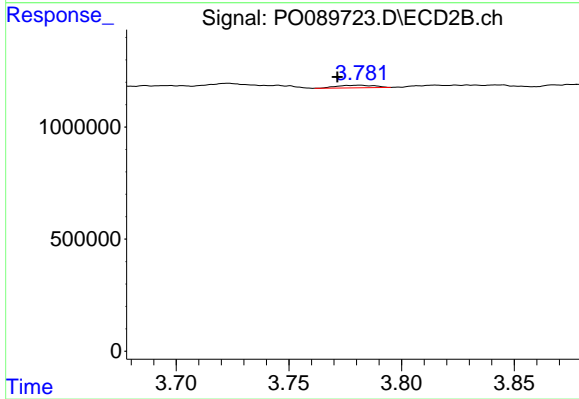
#7 AR-1016-5

R.T.: 5.105 min
 Delta R.T.: 0.004 min
 Response: 1653804
 Conc: 68.05 ng/ml



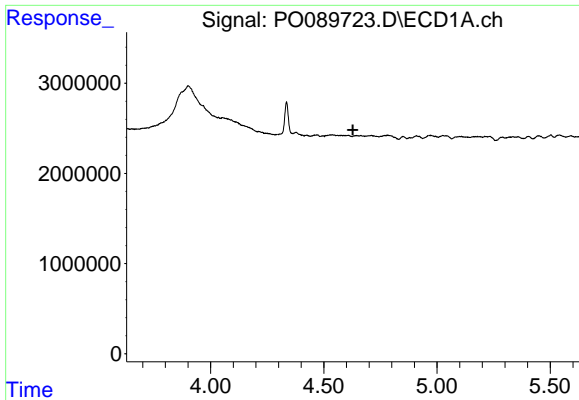
#8 AR-1221-1

R.T.: 4.537 min
 Delta R.T.: -0.005 min
 Response: 278376
 Conc: 9.30 ng/ml



#8 AR-1221-1

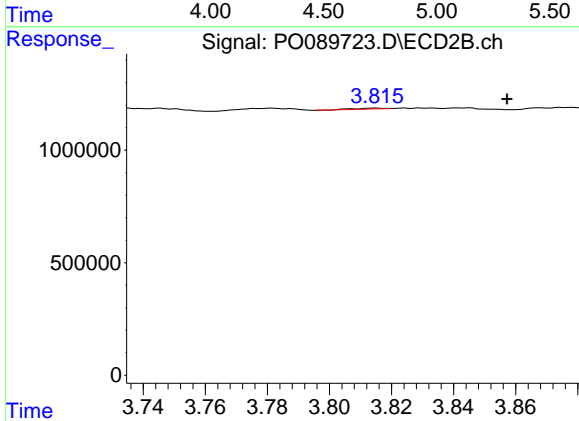
R.T.: 3.782 min
 Delta R.T.: 0.010 min
 Response: 129393
 Conc: 12.31 ng/ml



#9 AR-1221-2

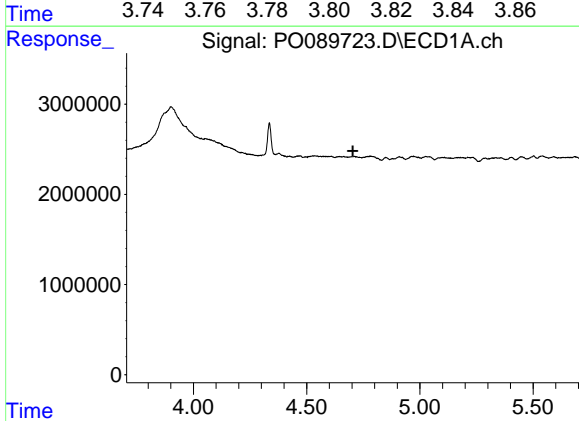
R.T.: 0.000 min
 Exp R.T.: 4.628 min
 Response: 0
 Conc: N.D.

Instrument :
 ECD_O
 ClientSampleId :
 SOM-2022-83A



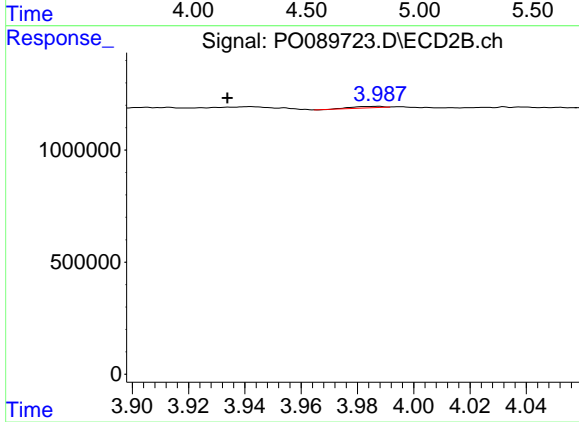
#9 AR-1221-2

R.T.: 3.815 min
 Delta R.T.: -0.043 min
 Response: 24650
 Conc: 3.11 ng/ml



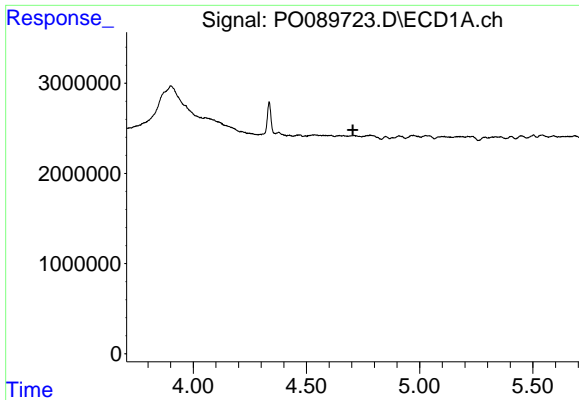
#10 AR-1221-3

R.T.: 0.000 min
 Exp R.T.: 4.704 min
 Response: 0
 Conc: N.D.



#10 AR-1221-3

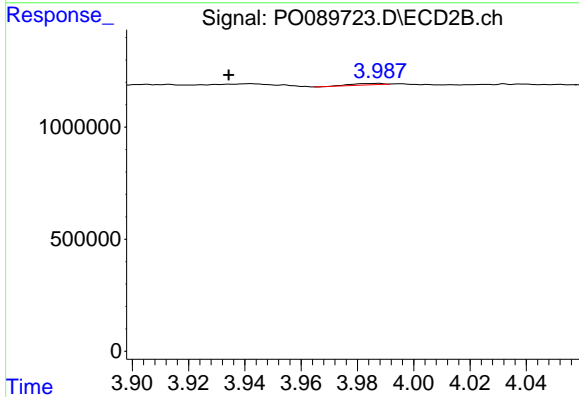
R.T.: 3.988 min
 Delta R.T.: 0.054 min
 Response: 47629
 Conc: 1.86 ng/ml



#11 AR-1232-1

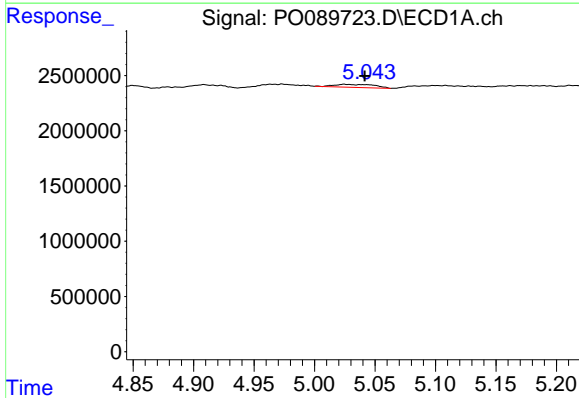
R.T.: 0.000 min
 Exp R.T.: 4.705 min
 Response: 0
 Conc: N.D.

Instrument :
 ECD_O
 ClientSampleId :
 SOM-2022-83A



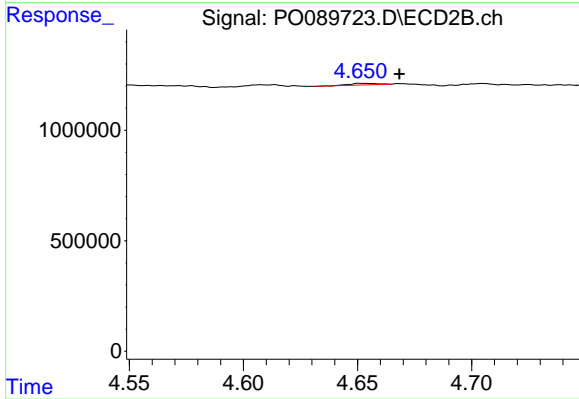
#11 AR-1232-1

R.T.: 3.988 min
 Delta R.T.: 0.053 min
 Response: 47629
 Conc: 2.37 ng/ml



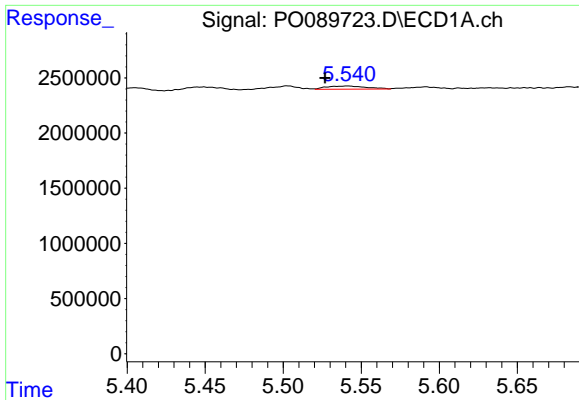
#12 AR-1232-2

R.T.: 5.025 min
 Delta R.T.: -0.017 min
 Response: 630512
 Conc: 26.64 ng/ml



#12 AR-1232-2

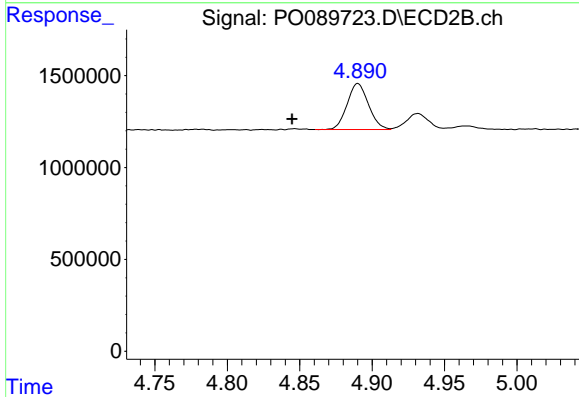
R.T.: 4.651 min
 Delta R.T.: -0.017 min
 Response: 61782
 Conc: 3.34 ng/ml



#13 AR-1232-3

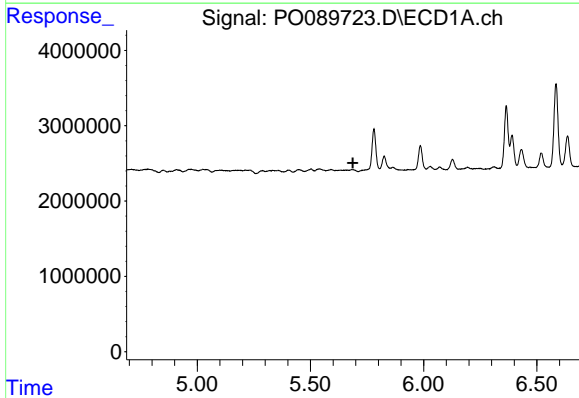
R.T.: 5.541 min
 Delta R.T.: 0.014 min
 Response: 510769
 Conc: 11.37 ng/ml

Instrument :
 ECD_O
 ClientSampleId :
 SOM-2022-83A



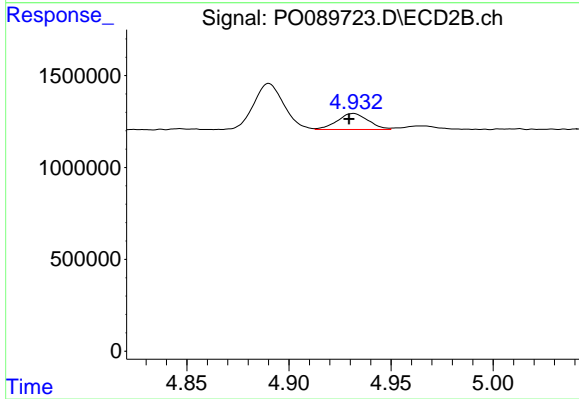
#13 AR-1232-3

R.T.: 4.890 min
 Delta R.T.: 0.046 min
 Response: 2573792
 Conc: 269.61 ng/ml



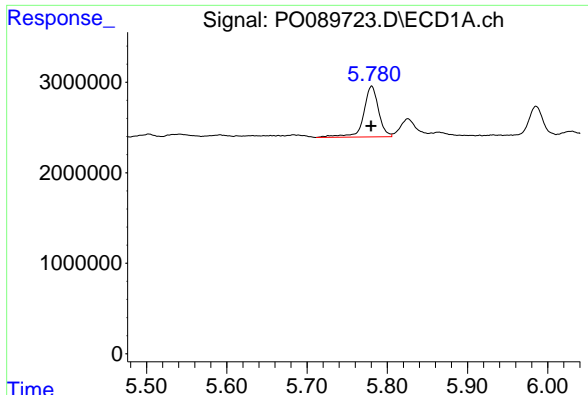
#14 AR-1232-4

R.T.: 0.000 min
 Exp R.T. : 5.688 min
 Response: 0
 Conc: N.D.



#14 AR-1232-4

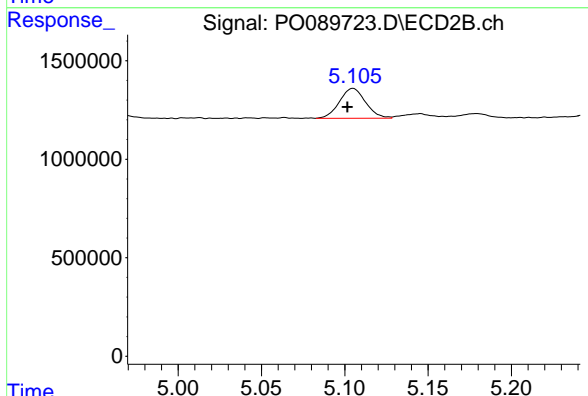
R.T.: 4.932 min
 Delta R.T.: 0.002 min
 Response: 924367
 Conc: 106.09 ng/ml



#15 AR-1232-5

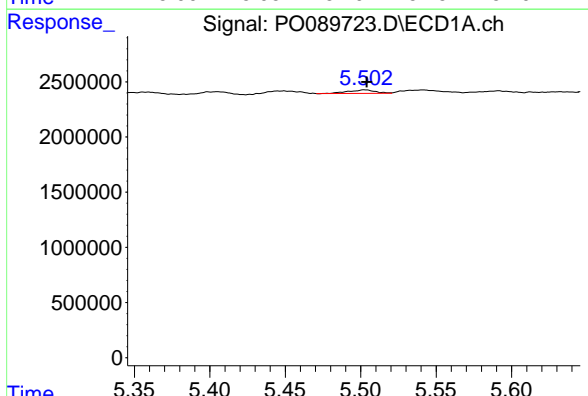
R.T.: 5.781 min
 Delta R.T.: 0.000 min
 Response: 7278609
 Conc: 421.98 ng/ml

Instrument :
 ECD_O
 ClientSampleId :
 SOM-2022-83A



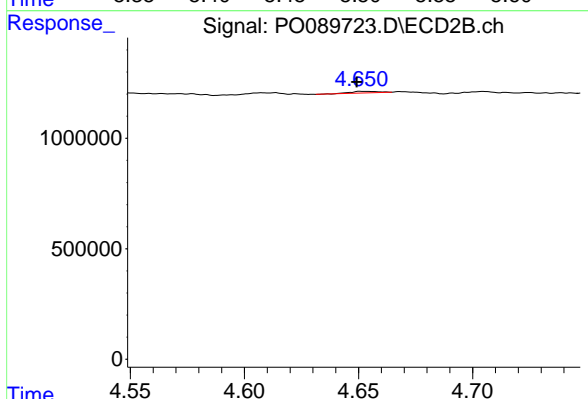
#15 AR-1232-5

R.T.: 5.105 min
 Delta R.T.: 0.004 min
 Response: 1653804
 Conc: 169.35 ng/ml



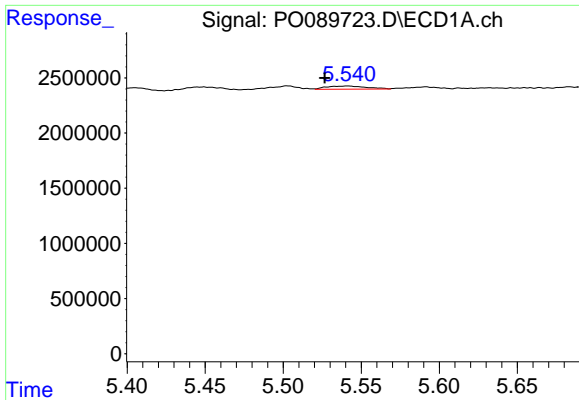
#16 AR-1242-1

R.T.: 5.503 min
 Delta R.T.: -0.001 min
 Response: 379276
 Conc: 6.16 ng/ml



#16 AR-1242-1

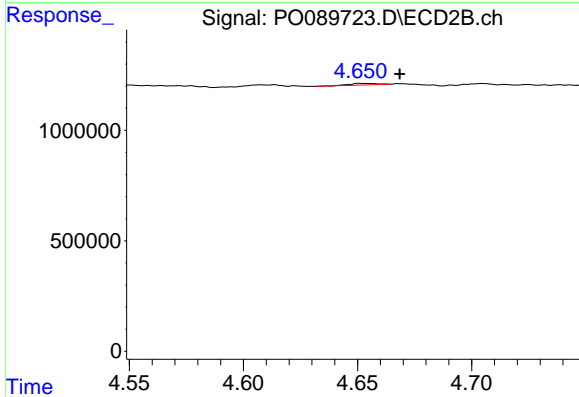
R.T.: 4.651 min
 Delta R.T.: 0.002 min
 Response: 61782
 Conc: 2.29 ng/ml



#17 AR-1242-2

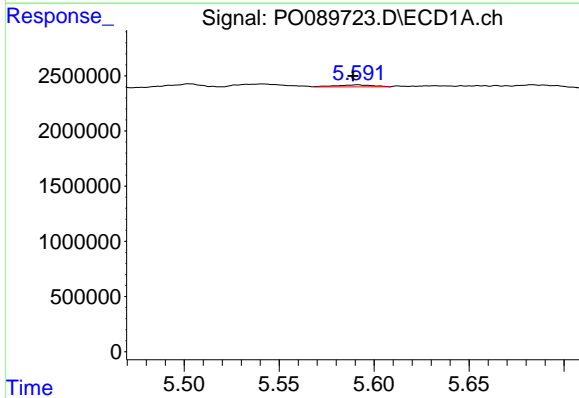
R.T.: 5.541 min
 Delta R.T.: 0.015 min
 Response: 510769
 Conc: 5.77 ng/ml

Instrument :
 ECD_O
 ClientSampleId :
 SOM-2022-83A



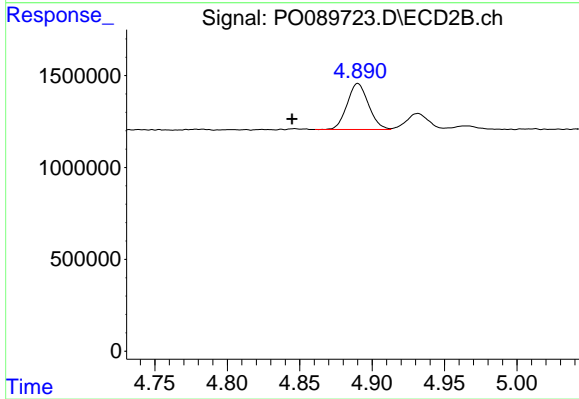
#17 AR-1242-2

R.T.: 4.651 min
 Delta R.T.: -0.018 min
 Response: 61782
 Conc: 1.72 ng/ml



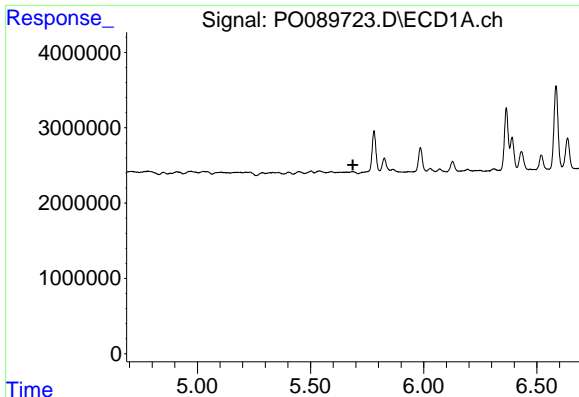
#18 AR-1242-3

R.T.: 5.591 min
 Delta R.T.: 0.003 min
 Response: 240307
 Conc: 4.34 ng/ml



#18 AR-1242-3

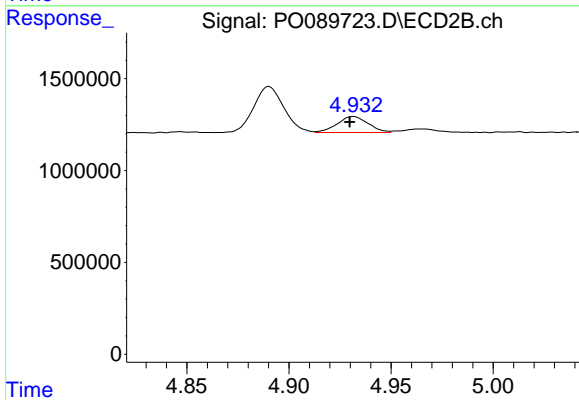
R.T.: 4.890 min
 Delta R.T.: 0.045 min
 Response: 2573792
 Conc: 133.81 ng/ml



#19 AR-1242-4

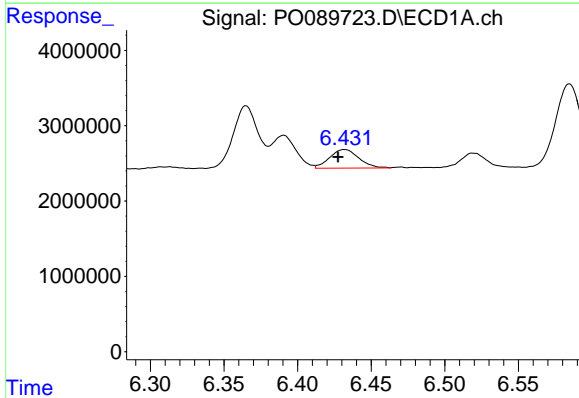
R.T.: 0.000 min
 Exp R.T.: 5.687 min
 Response: 0
 Conc: N.D.

Instrument :
 ECD_O
 ClientSampleId :
 SOM-2022-83A



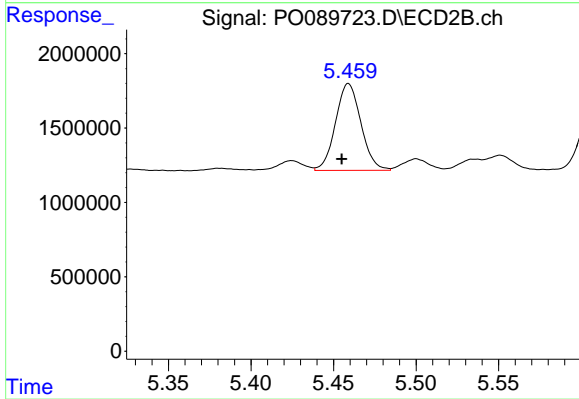
#19 AR-1242-4

R.T.: 4.932 min
 Delta R.T.: 0.002 min
 Response: 924367
 Conc: 47.73 ng/ml



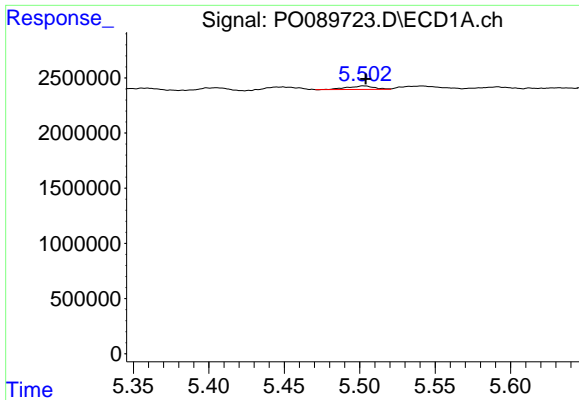
#20 AR-1242-5

R.T.: 6.432 min
 Delta R.T.: 0.005 min
 Response: 3393073
 Conc: 82.10 ng/ml



#20 AR-1242-5

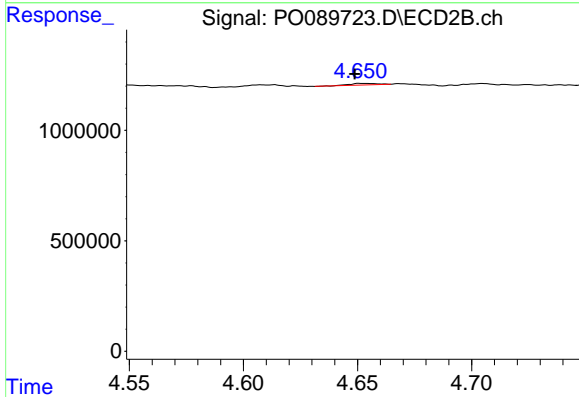
R.T.: 5.459 min
 Delta R.T.: 0.004 min
 Response: 6251513
 Conc: 259.42 ng/ml



#21 AR-1248-1

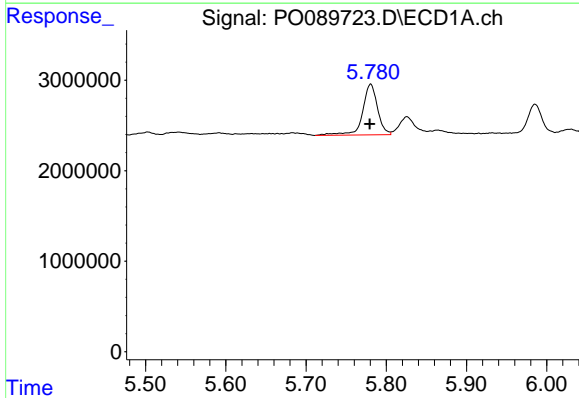
R.T.: 5.503 min
 Delta R.T.: -0.001 min
 Response: 379276
 Conc: 8.34 ng/ml

Instrument :
 ECD_O
 ClientSampleId :
 SOM-2022-83A



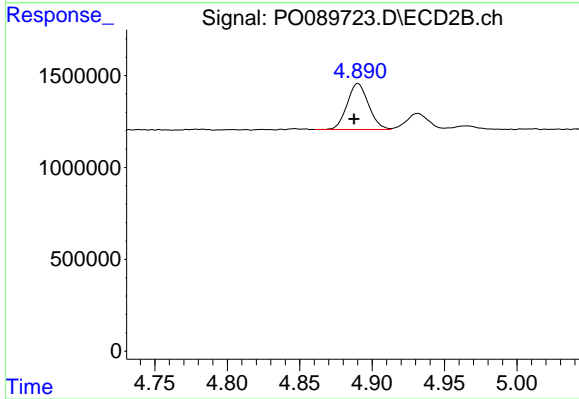
#21 AR-1248-1

R.T.: 4.651 min
 Delta R.T.: 0.002 min
 Response: 61782
 Conc: 3.16 ng/ml



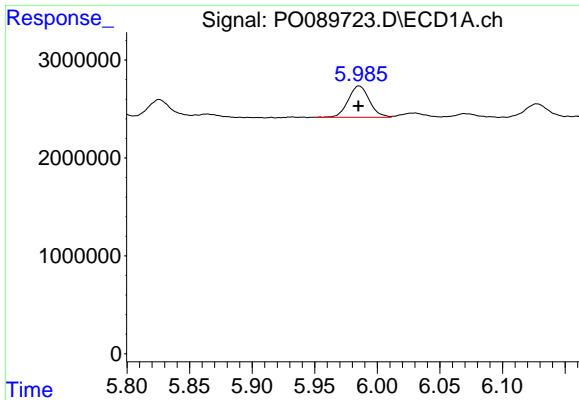
#22 AR-1248-2

R.T.: 5.781 min
 Delta R.T.: 0.000 min
 Response: 7278609
 Conc: 112.65 ng/ml



#22 AR-1248-2

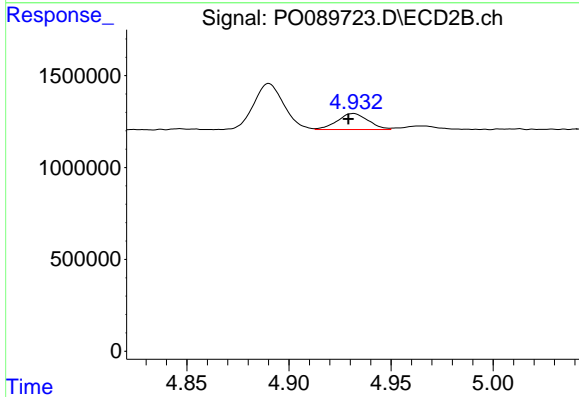
R.T.: 4.890 min
 Delta R.T.: 0.003 min
 Response: 2573792
 Conc: 94.99 ng/ml



#23 AR-1248-3

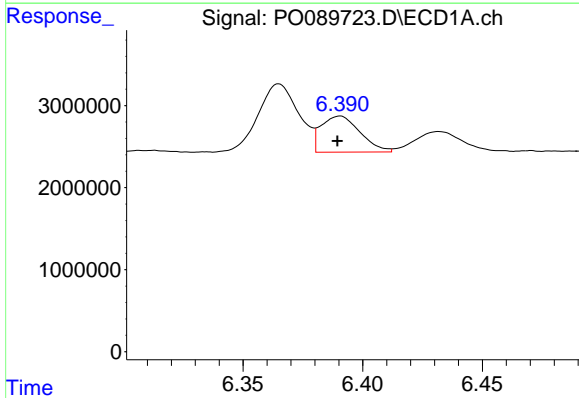
R.T.: 5.985 min
 Delta R.T.: 0.000 min
 Response: 3776389
 Conc: 55.45 ng/ml

Instrument :
 ECD_O
 ClientSampleId :
 SOM-2022-83A



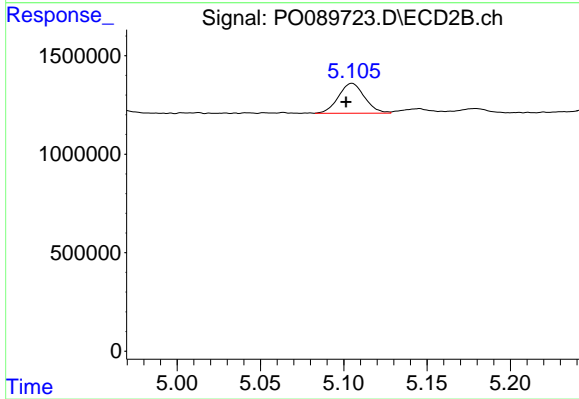
#23 AR-1248-3

R.T.: 4.932 min
 Delta R.T.: 0.003 min
 Response: 924367
 Conc: 32.39 ng/ml



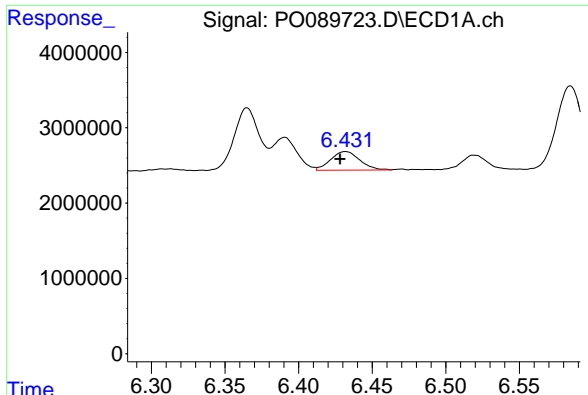
#24 AR-1248-4

R.T.: 6.391 min
 Delta R.T.: 0.001 min
 Response: 4968531
 Conc: 68.81 ng/ml



#24 AR-1248-4

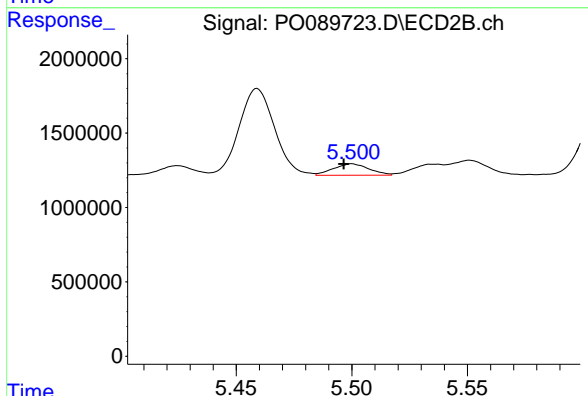
R.T.: 5.105 min
 Delta R.T.: 0.004 min
 Response: 1653804
 Conc: 49.24 ng/ml



#25 AR-1248-5

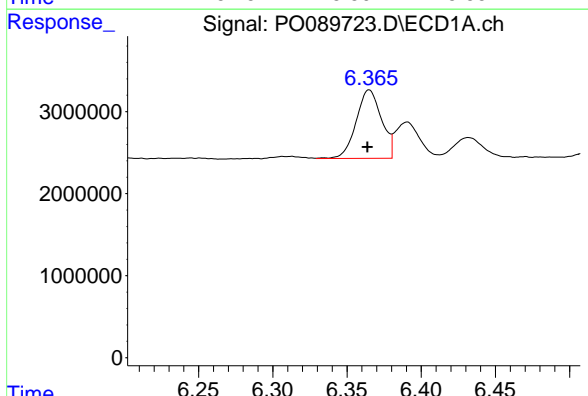
R.T.: 6.432 min
 Delta R.T.: 0.004 min
 Response: 3393073
 Conc: 48.65 ng/ml

Instrument :
 ECD_O
 ClientSampleId :
 SOM-2022-83A



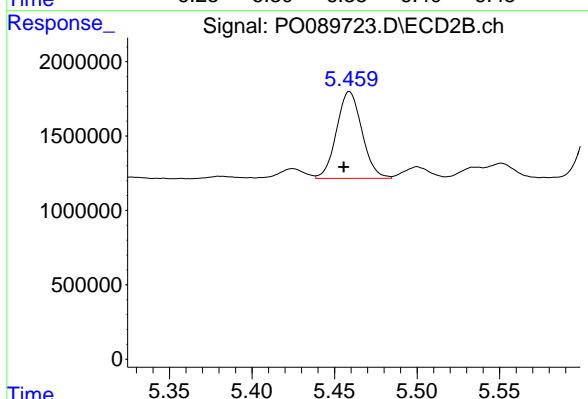
#25 AR-1248-5

R.T.: 5.500 min
 Delta R.T.: 0.004 min
 Response: 820830
 Conc: 25.20 ng/ml



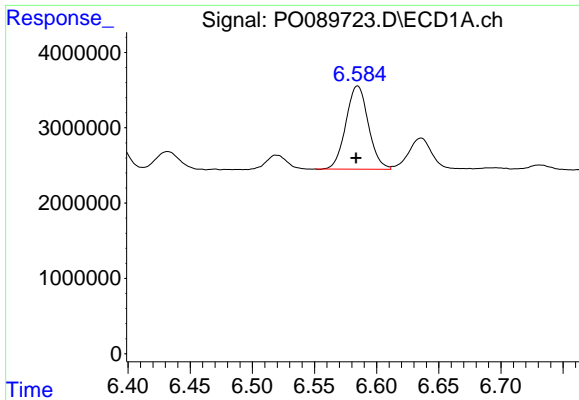
#26 AR-1254-1

R.T.: 6.365 min
 Delta R.T.: 0.001 min
 Response: 9903846
 Conc: 135.75 ng/ml



#26 AR-1254-1

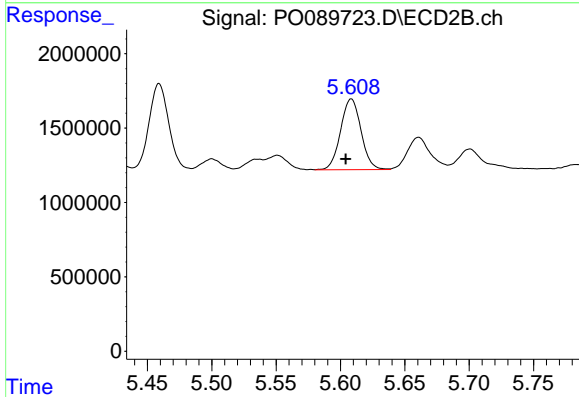
R.T.: 5.459 min
 Delta R.T.: 0.003 min
 Response: 6251513
 Conc: 124.28 ng/ml



#27 AR-1254-2

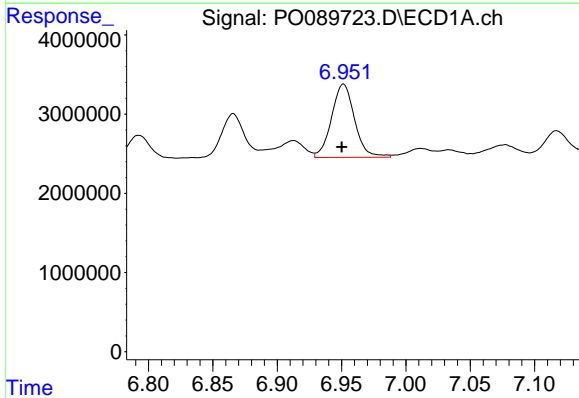
R.T.: 6.585 min
 Delta R.T.: 0.001 min
 Response: 13932224
 Conc: 131.03 ng/ml

Instrument :
 ECD_O
 ClientSampleId :
 SOM-2022-83A



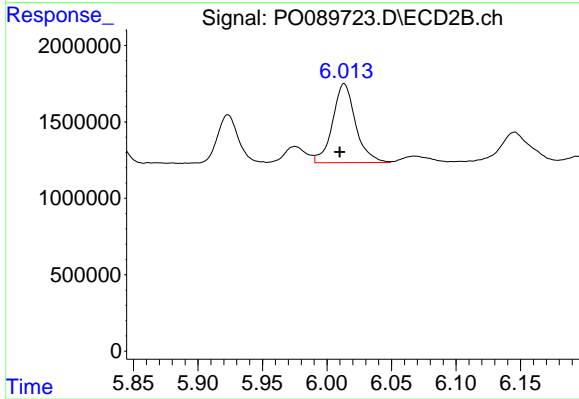
#27 AR-1254-2

R.T.: 5.608 min
 Delta R.T.: 0.004 min
 Response: 5280549
 Conc: 120.84 ng/ml



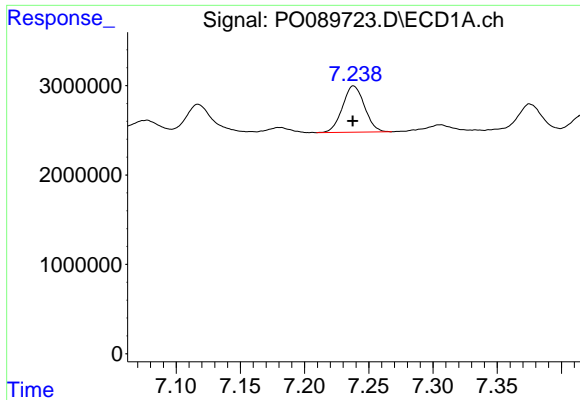
#28 AR-1254-3

R.T.: 6.952 min
 Delta R.T.: 0.001 min
 Response: 11550604
 Conc: 106.02 ng/ml



#28 AR-1254-3

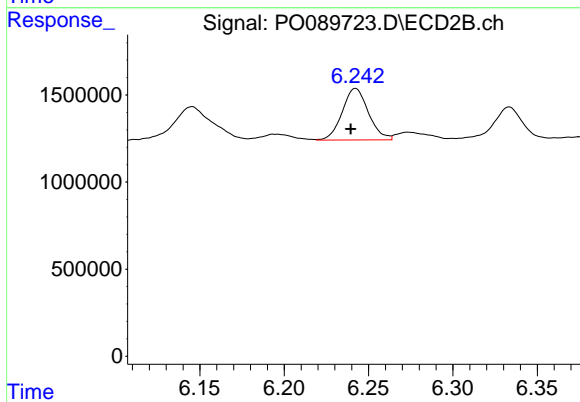
R.T.: 6.013 min
 Delta R.T.: 0.004 min
 Response: 6411694
 Conc: 90.25 ng/ml



#29 AR-1254-4

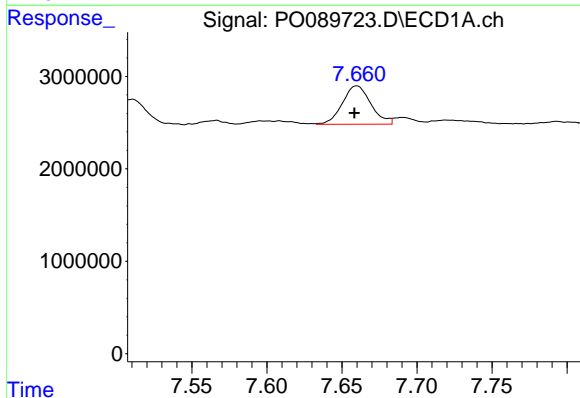
R.T.: 7.238 min
 Delta R.T.: 0.000 min
 Response: 6197004
 Conc: 83.31 ng/ml

Instrument :
 ECD_O
 ClientSampleId :
 SOM-2022-83A



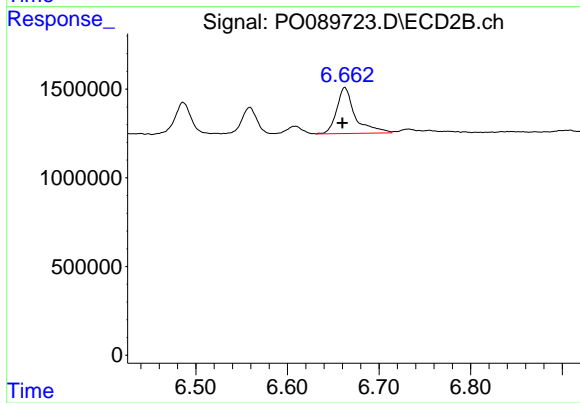
#29 AR-1254-4

R.T.: 6.242 min
 Delta R.T.: 0.003 min
 Response: 3211910
 Conc: 72.53 ng/ml



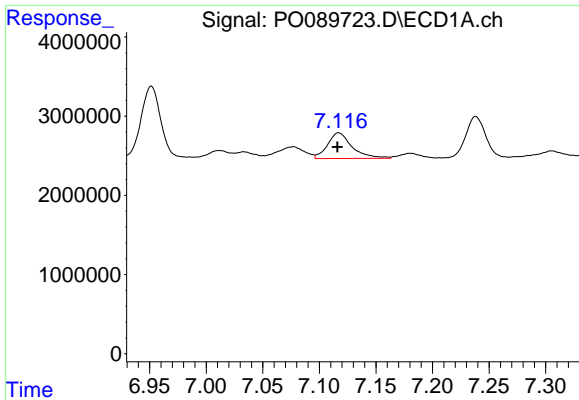
#30 AR-1254-5

R.T.: 7.660 min
 Delta R.T.: 0.001 min
 Response: 5514603
 Conc: 72.67 ng/ml



#30 AR-1254-5

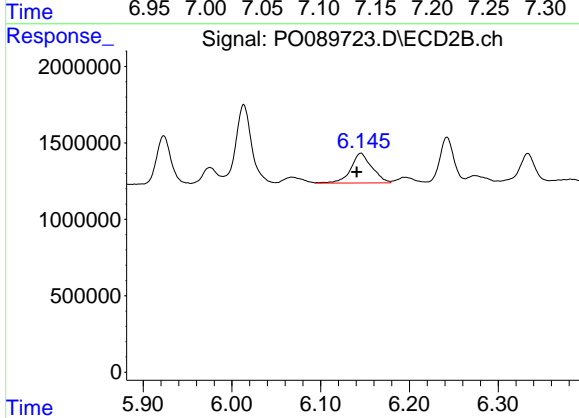
R.T.: 6.663 min
 Delta R.T.: 0.003 min
 Response: 3632741
 Conc: 59.90 ng/ml



#31 AR-1260-1

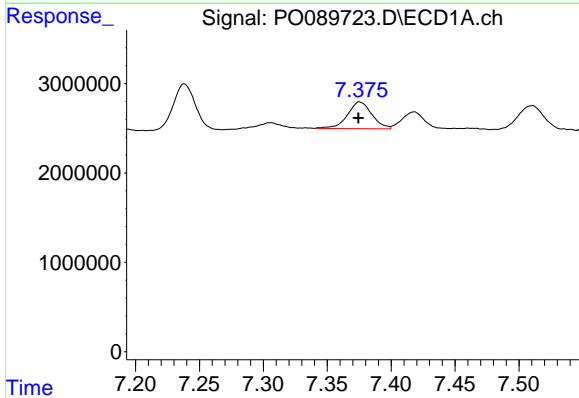
R.T.: 7.117 min
 Delta R.T.: 0.001 min
 Response: 4884008
 Conc: 62.17 ng/ml

Instrument :
 ECD_O
 ClientSampleId :
 SOM-2022-83A



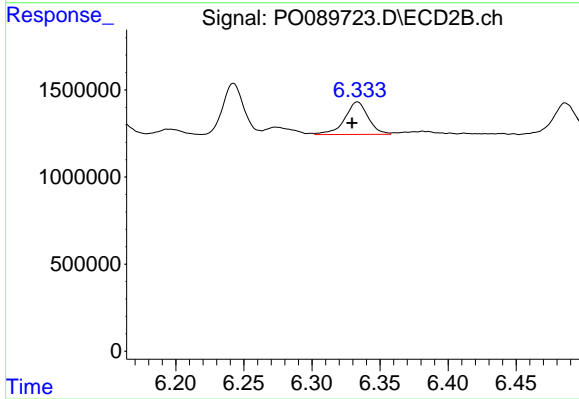
#31 AR-1260-1

R.T.: 6.145 min
 Delta R.T.: 0.005 min
 Response: 3217710
 Conc: 66.55 ng/ml



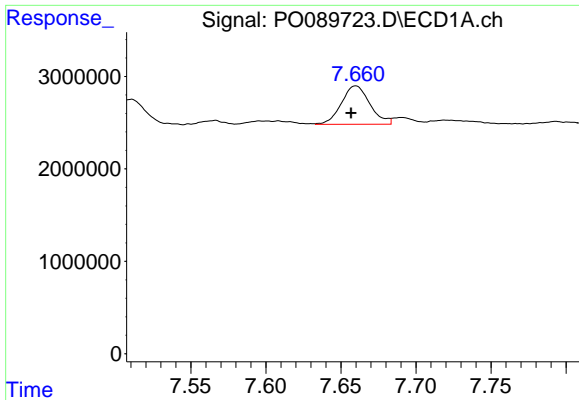
#32 AR-1260-2

R.T.: 7.375 min
 Delta R.T.: 0.001 min
 Response: 3994604
 Conc: 46.23 ng/ml



#32 AR-1260-2

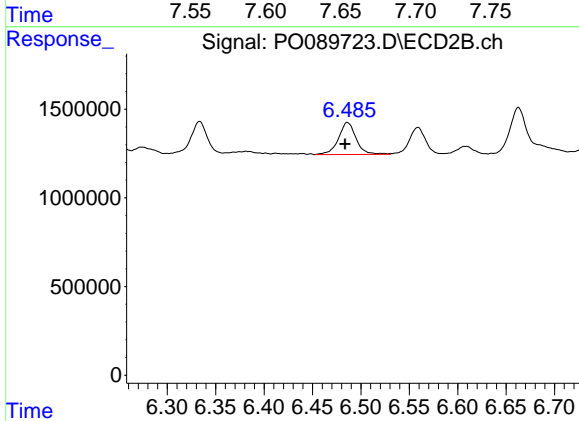
R.T.: 6.333 min
 Delta R.T.: 0.004 min
 Response: 2228836
 Conc: 38.01 ng/ml



#33 AR-1260-3

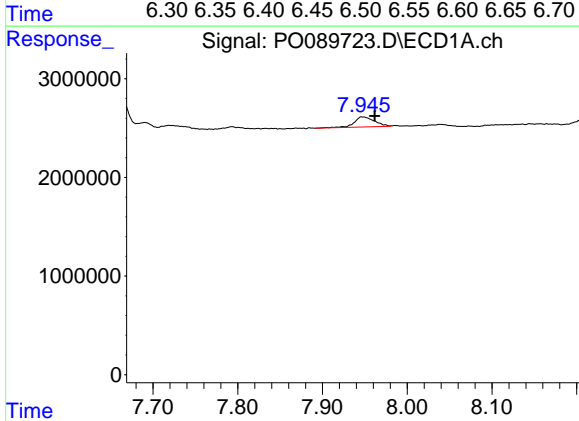
R.T.: 7.660 min
 Delta R.T.: 0.003 min
 Response: 5514603
 Conc: 59.15 ng/ml

Instrument :
 ECD_O
 ClientSampleId :
 SOM-2022-83A



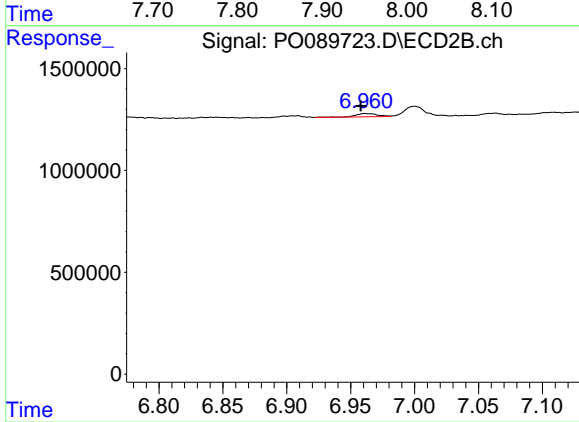
#33 AR-1260-3

R.T.: 6.486 min
 Delta R.T.: 0.002 min
 Response: 2293340
 Conc: 41.75 ng/ml



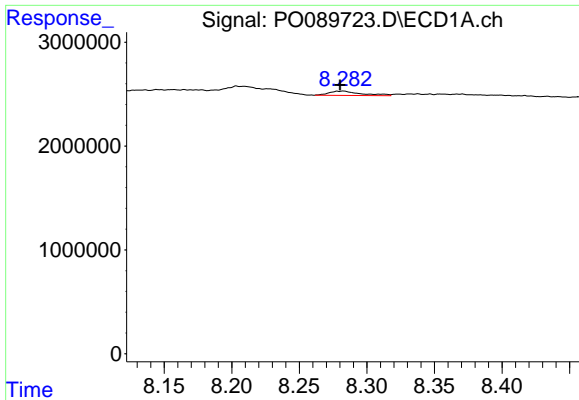
#34 AR-1260-4

R.T.: 7.947 min
 Delta R.T.: -0.015 min
 Response: 1727628
 Conc: 26.45 ng/ml



#34 AR-1260-4

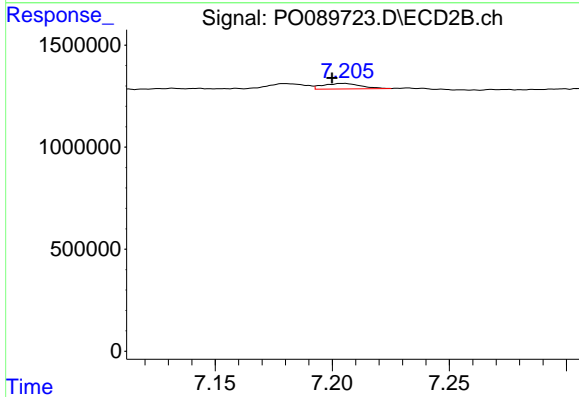
R.T.: 6.961 min
 Delta R.T.: 0.003 min
 Response: 188902
 Conc: 4.27 ng/ml



#35 AR-1260-5

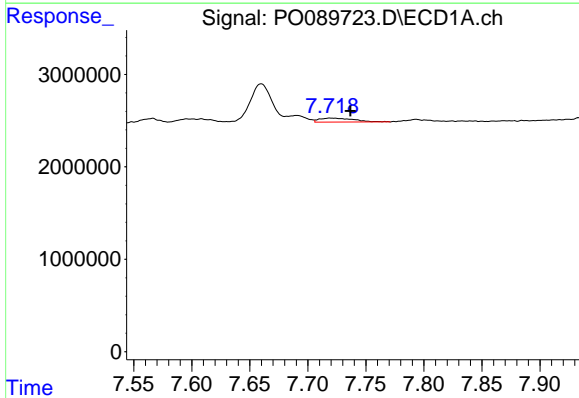
R.T.: 8.283 min
 Delta R.T.: 0.003 min
 Response: 675929
 Conc: 5.57 ng/ml

Instrument :
 ECD_O
 ClientSampleId :
 SOM-2022-83A



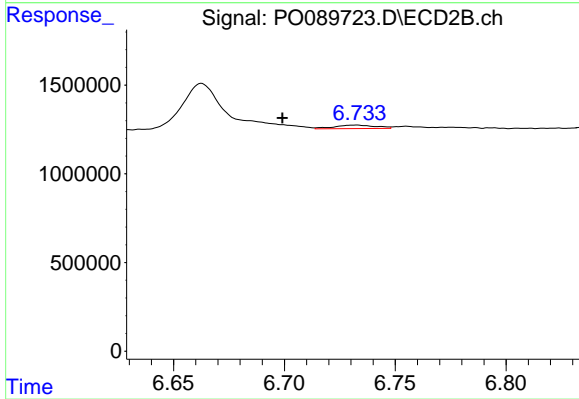
#35 AR-1260-5

R.T.: 7.205 min
 Delta R.T.: 0.005 min
 Response: 297709
 Conc: 2.90 ng/ml



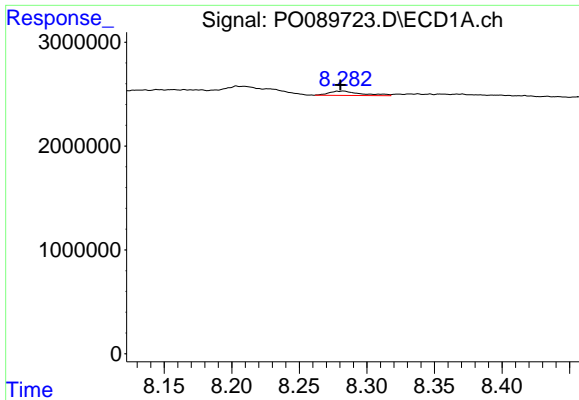
#36 AR-1262-1

R.T.: 7.720 min
 Delta R.T.: -0.017 min
 Response: 858961
 Conc: 9.59 ng/ml



#36 AR-1262-1

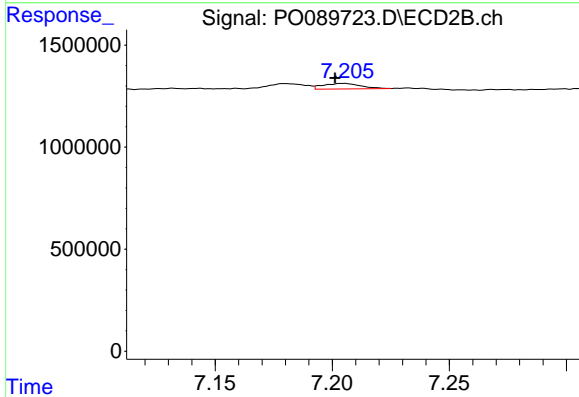
R.T.: 6.732 min
 Delta R.T.: 0.033 min
 Response: 252816
 Conc: 3.95 ng/ml



#37 AR-1262-2

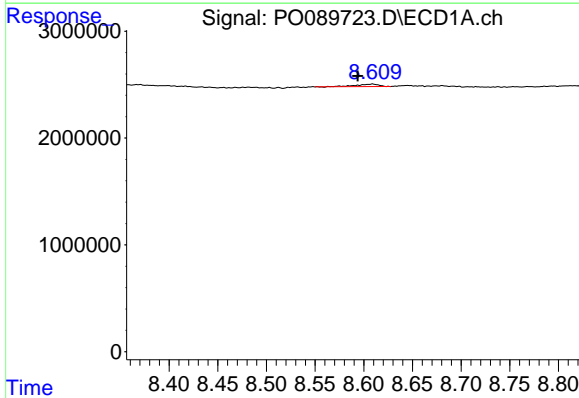
R.T.: 8.283 min
 Delta R.T.: 0.002 min
 Response: 675929
 Conc: 4.78 ng/ml

Instrument :
 ECD_O
 ClientSampleId :
 SOM-2022-83A



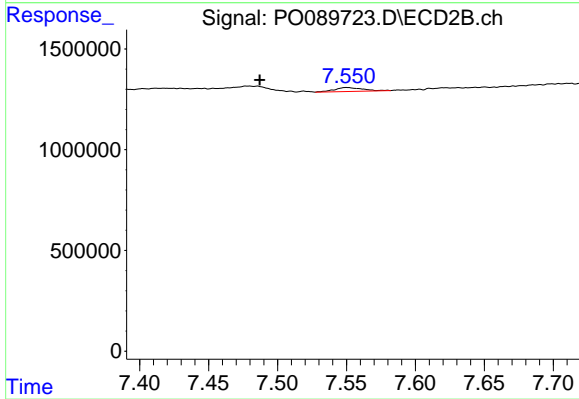
#37 AR-1262-2

R.T.: 7.205 min
 Delta R.T.: 0.004 min
 Response: 297709
 Conc: 2.61 ng/ml



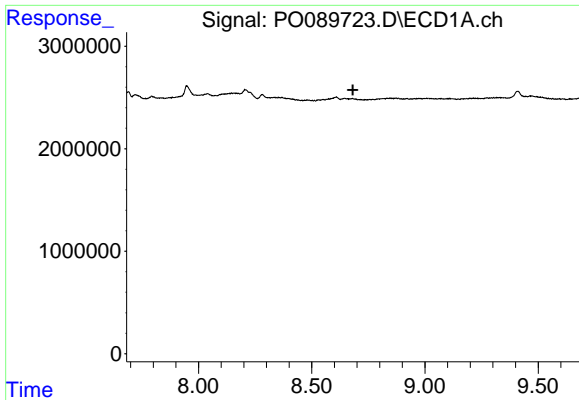
#38 AR-1262-3

R.T.: 8.609 min
 Delta R.T.: 0.015 min
 Response: 382256
 Conc: 3.87 ng/ml



#38 AR-1262-3

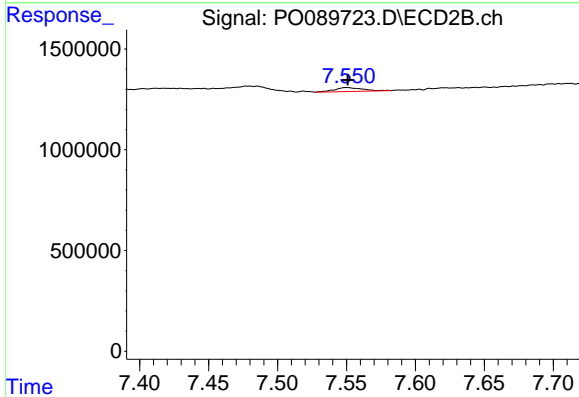
R.T.: 7.550 min
 Delta R.T.: 0.063 min
 Response: 276735
 Conc: 6.30 ng/ml



#39 AR-1262-4

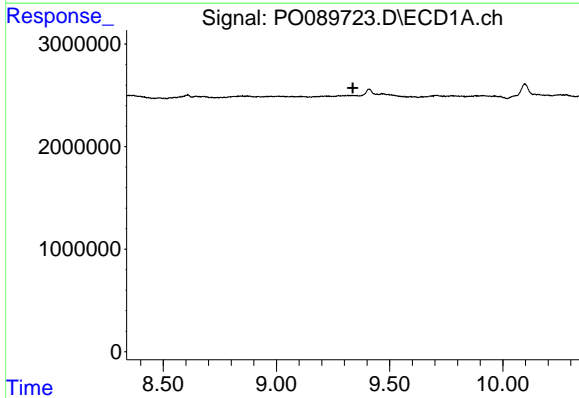
R.T.: 0.000 min
 Exp R.T. : 8.682 min
 Response: 0
 Conc: N.D.

Instrument :
 ECD_O
 ClientSampleId :
 SOM-2022-83A



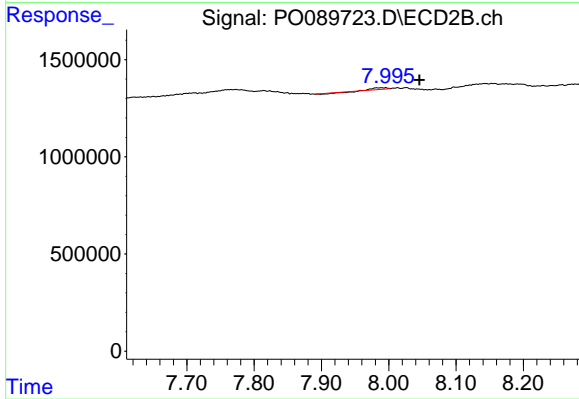
#39 AR-1262-4

R.T.: 7.550 min
 Delta R.T.: 0.000 min
 Response: 276735
 Conc: 3.38 ng/ml



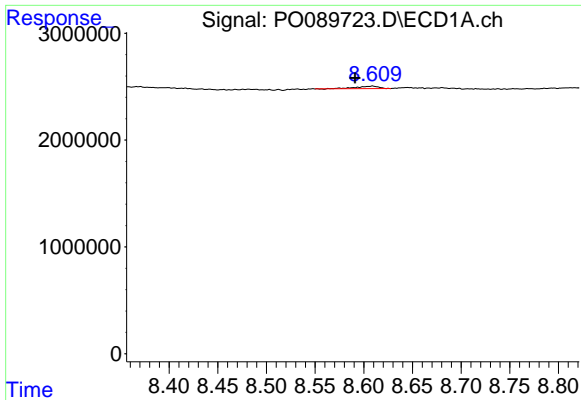
#40 AR-1262-5

R.T.: 0.000 min
 Exp R.T. : 9.337 min
 Response: 0
 Conc: N.D.



#40 AR-1262-5

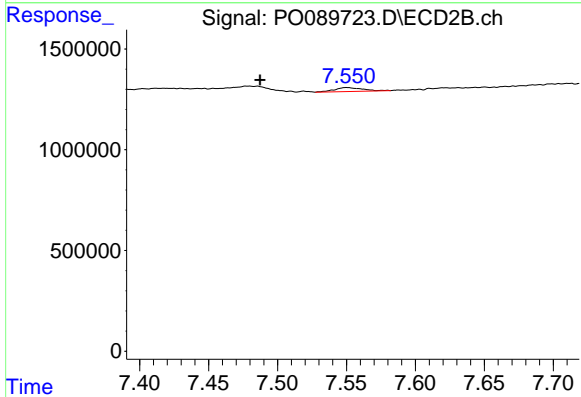
R.T.: 7.996 min
 Delta R.T.: -0.050 min
 Response: 51632
 Conc: 1.42 ng/ml



#41 AR-1268-1

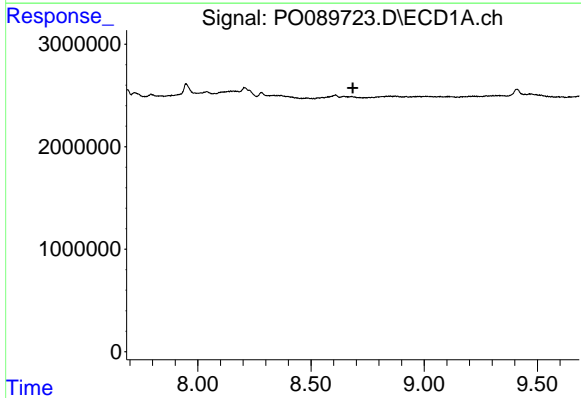
R.T.: 8.609 min
 Delta R.T.: 0.018 min
 Response: 382256
 Conc: 2.32 ng/ml

Instrument :
 ECD_O
 ClientSampleId :
 SOM-2022-83A



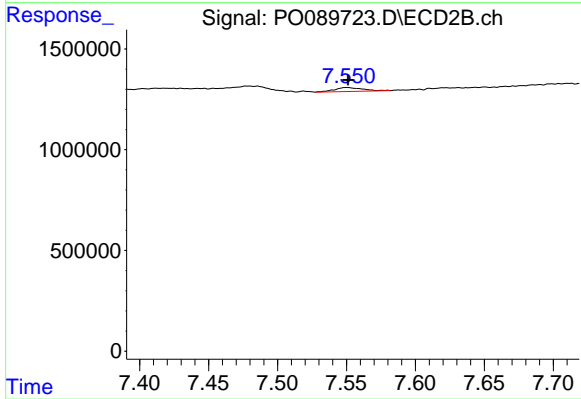
#41 AR-1268-1

R.T.: 7.550 min
 Delta R.T.: 0.063 min
 Response: 276735
 Conc: 2.11 ng/ml



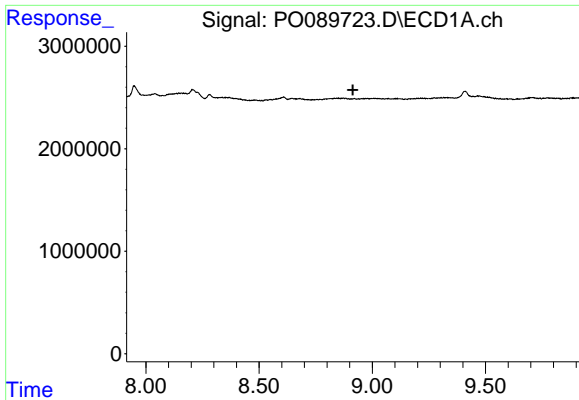
#42 AR-1268-2

R.T.: 0.000 min
 Exp R.T. : 8.685 min
 Response: 0
 Conc: N.D.



#42 AR-1268-2

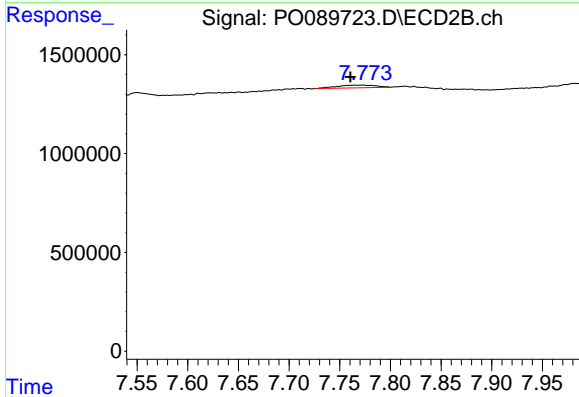
R.T.: 7.550 min
 Delta R.T.: 0.000 min
 Response: 276735
 Conc: 2.42 ng/ml



#43 AR-1268-3

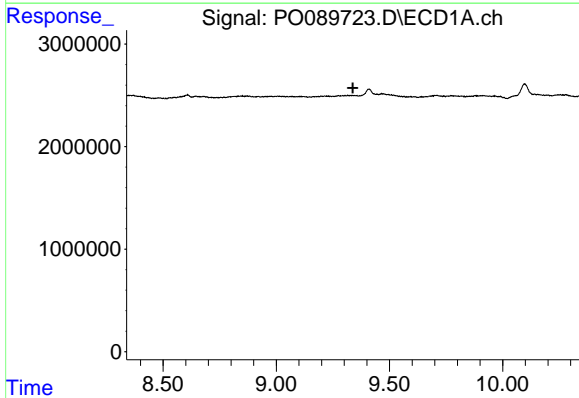
R.T.: 0.000 min
 Exp R.T. : 8.914 min
 Response: 0
 Conc: N.D.

Instrument :
 ECD_O
 ClientSampleId :
 SOM-2022-83A



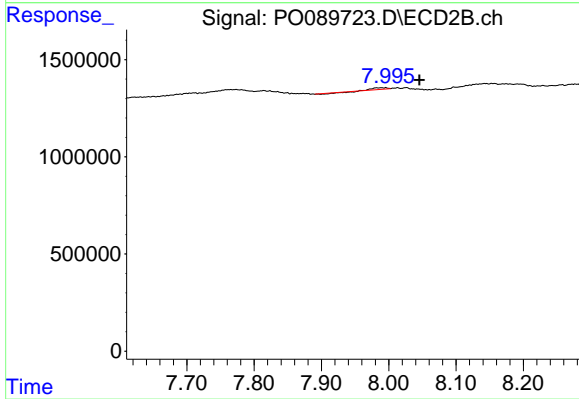
#43 AR-1268-3

R.T.: 7.765 min
 Delta R.T.: 0.005 min
 Response: 363880
 Conc: 3.78 ng/ml



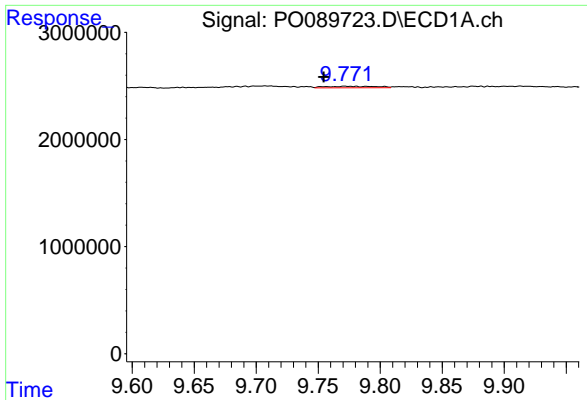
#44 AR-1268-4

R.T.: 0.000 min
 Exp R.T. : 9.338 min
 Response: 0
 Conc: N.D.



#44 AR-1268-4

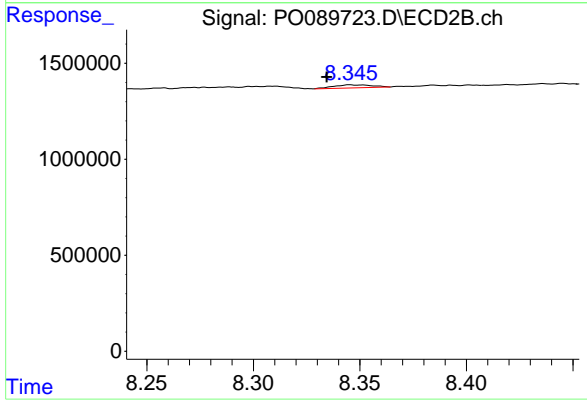
R.T.: 7.996 min
 Delta R.T.: -0.050 min
 Response: 51632
 Conc: 1.31 ng/ml



#45 AR-1268-5

R.T.: 9.772 min
 Delta R.T.: 0.017 min
 Response: 388922
 Conc: 1.01 ng/ml

Instrument :
 ECD_O
 ClientSampleId :
 SOM-2022-83A



#45 AR-1268-5

R.T.: 8.345 min
 Delta R.T.: 0.011 min
 Response: 193456
 Conc: 0.64 ng/ml