

Data Path : Z:\pestpcbsrv\HPCHEM1\ECD\_0\Data\PO100621\  
 Data File : PO081832.D  
 Signal(s) : Signal #1: ECD1A.CH Signal #2: ECD2B.CH  
 Acq On : 07 Oct 2021 4:05  
 Operator : AJ\MA  
 Sample : AR1254ICC250  
 Misc :  
 ALS Vial : 23 Sample Multiplier: 1

Instrument :  
 ECD\_0  
 ClientSampleId :  
 AR1254ICC250

Integration File signal 1: autoint1.e  
 Integration File signal 2: autoint2.e  
 Quant Time: Oct 07 04:44:16 2021  
 Quant Method : Z:\pestpcbsrv\HPCHEM1\ECD\_0\methods\PO100621.M  
 Quant Title : GC EXTRACTABLES  
 QLast Update : Thu Oct 07 04:42:38 2021  
 Response via : Initial Calibration  
 Integrator: ChemStation 6890 Scale Mode: Small noise peaks clipped

Volume Inj. : 2 µl  
 Signal #1 Phase : ZB-MR1 Signal #2 Phase: ZB-MR2  
 Signal #1 Info : 30Mx0.32mmx 0.50µ Signal #2 Info : 30M x 0.32mm x 0.25µm

Compound	RT#1	RT#2	Resp#1	Resp#2	ng/ml	ng/ml
-----						
System Monitoring Compounds						
1) SA Tetrachlo...	4.992	3.982	2084964	650459	25.356	25.087
2) SA Decachlor...	11.111	9.317	1535045	625764	25.066	26.076
Target Compounds						
26) L6 AR-1254-1	7.241	6.121	692956	376305	259.921	262.938
27) L6 AR-1254-2	7.472	6.282	1051317	338772	260.168	261.249
28) L6 AR-1254-3	7.855	6.704	1025752	516763	253.318	261.512
29) L6 AR-1254-4	8.154	6.944	759977	330909	252.705	258.372
30) L6 AR-1254-5	8.584	7.376	830147	456968	250.108	247.811
-----						

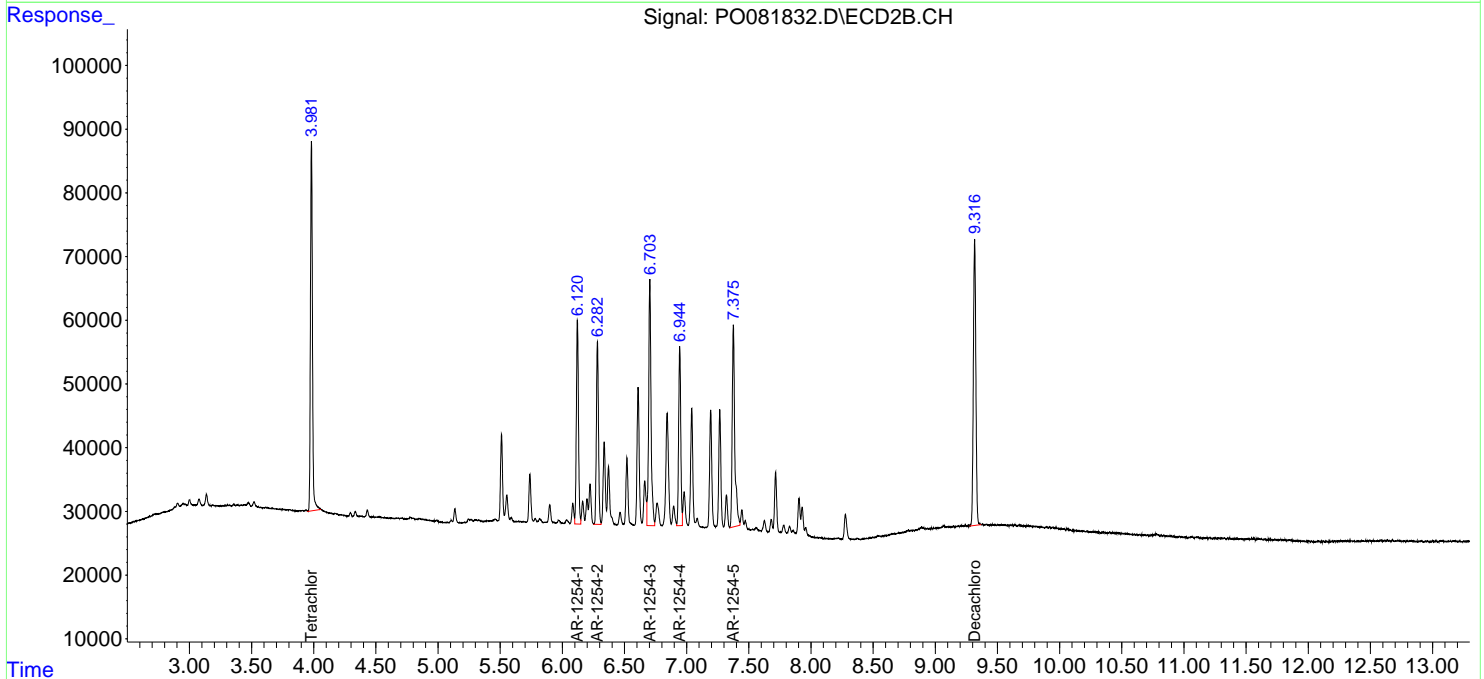
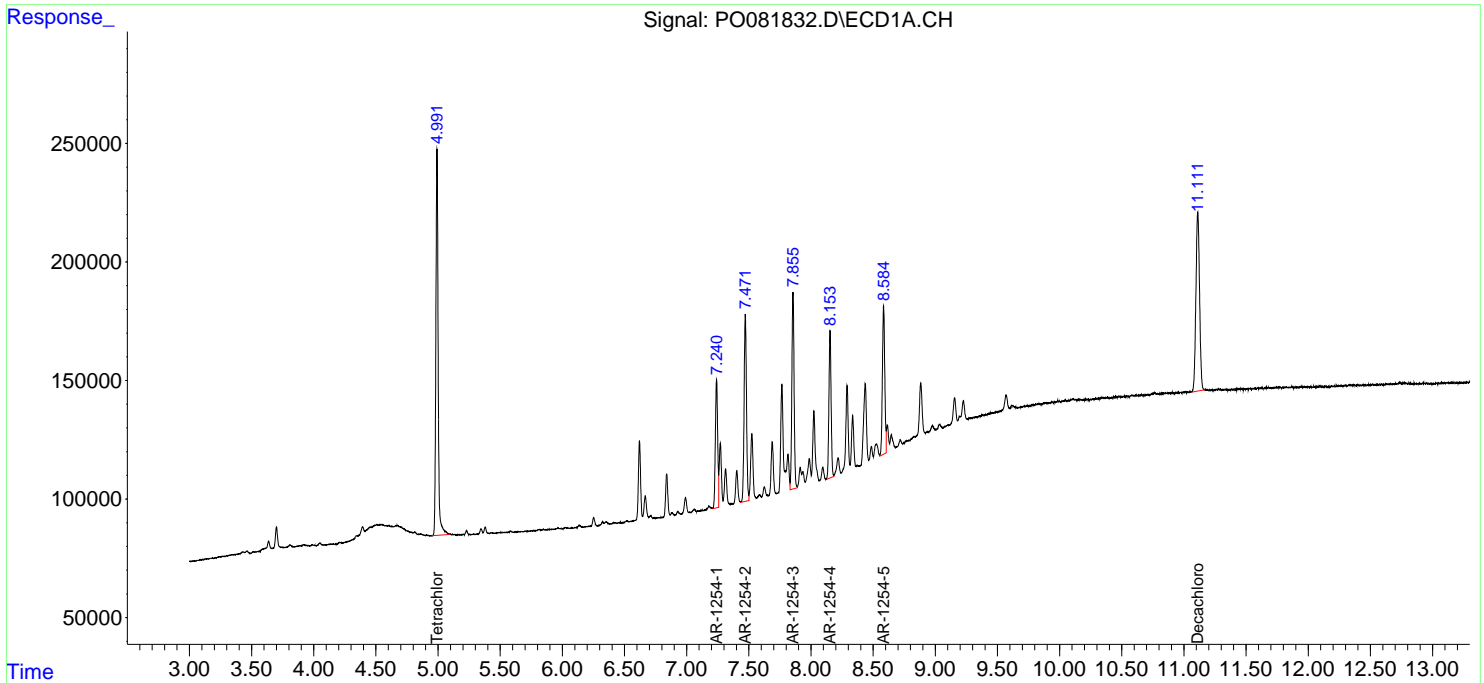
(f)=RT Delta > 1/2 Window (#)=Amounts differ by > 25% (m)=manual int.

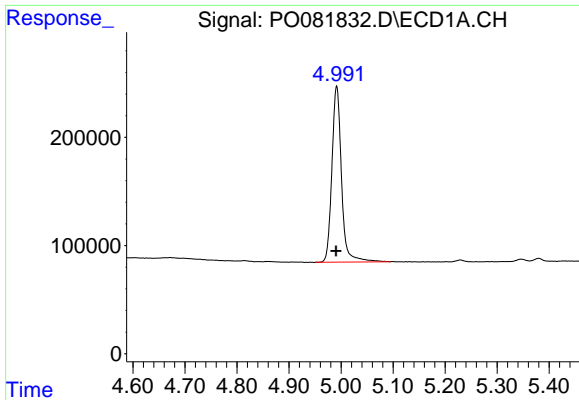
Data Path : Z:\pestpcbsrv\HPCHEM1\ECD\_0\Data\PO100621\  
 Data File : PO081832.D  
 Signal(s) : Signal #1: ECD1A.CH Signal #2: ECD2B.CH  
 Acq On : 07 Oct 2021 4:05  
 Operator : AJ\MA  
 Sample : AR1254ICC250  
 Misc :  
 ALS Vial : 23 Sample Multiplier: 1

Instrument :  
 ECD\_O  
 ClientSampled :  
 AR1254ICC250

Integration File signal 1: autoint1.e  
 Integration File signal 2: autoint2.e  
 Quant Time: Oct 07 04:44:16 2021  
 Quant Method : Z:\pestpcbsrv\HPCHEM1\ECD\_0\methods\PO100621.M  
 Quant Title : GC EXTRACTABLES  
 QLast Update : Thu Oct 07 04:42:38 2021  
 Response via : Initial Calibration  
 Integrator: ChemStation 6890 Scale Mode: Small noise peaks clipped

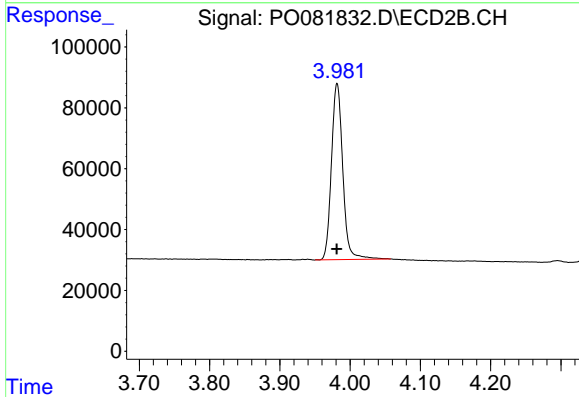
Volume Inj. : 2 µl  
 Signal #1 Phase : ZB-MR1 Signal #2 Phase: ZB-MR2  
 Signal #1 Info : 30Mx0.32mmx 0.50µ Signal #2 Info : 30M x 0.32mm x 0.25µm



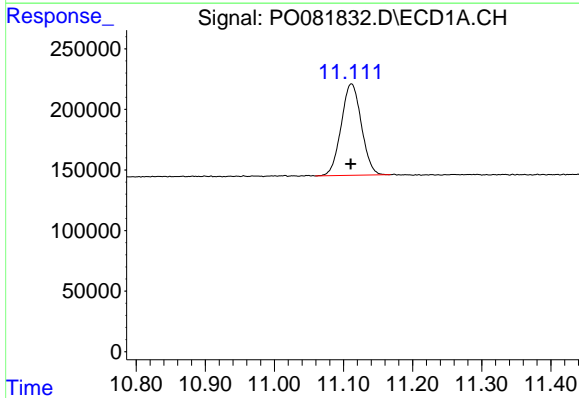


#1 Tetrachloro-m-xylene  
 R.T.: 4.992 min  
 Delta R.T.: 0.002 min  
 Response: 2084964  
 Conc: 25.36 ng/ml

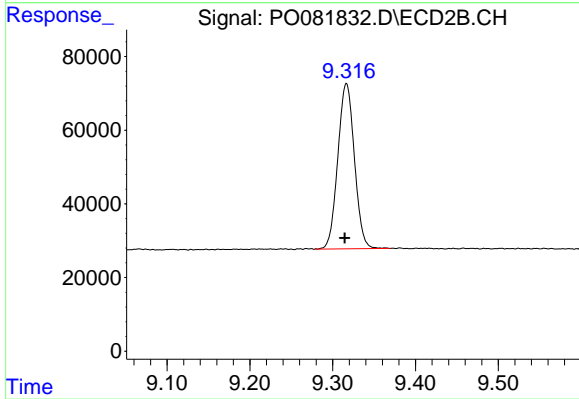
**Instrument :**  
 ECD\_O  
**ClientSampleId :**  
 AR1254ICC250



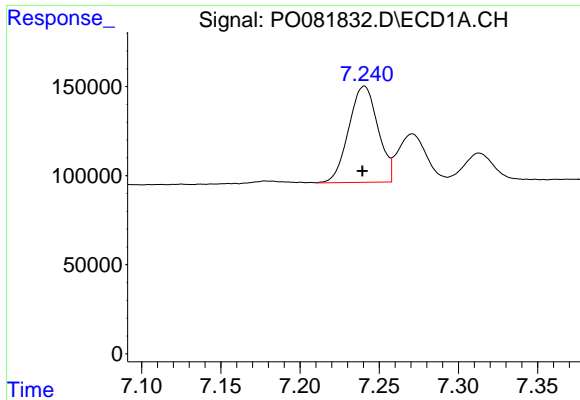
#1 Tetrachloro-m-xylene  
 R.T.: 3.982 min  
 Delta R.T.: 0.000 min  
 Response: 650459  
 Conc: 25.09 ng/ml



#2 Decachlorobiphenyl  
 R.T.: 11.111 min  
 Delta R.T.: 0.001 min  
 Response: 1535045  
 Conc: 25.07 ng/ml



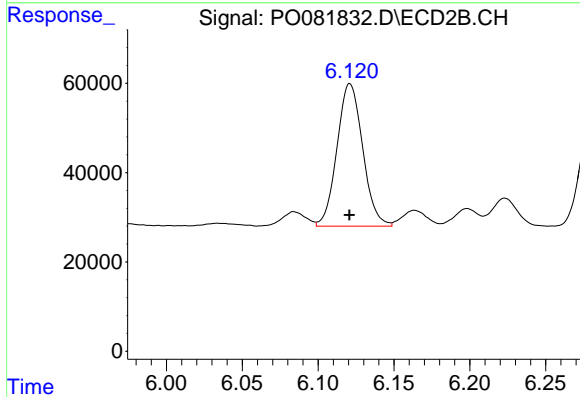
#2 Decachlorobiphenyl  
 R.T.: 9.317 min  
 Delta R.T.: 0.002 min  
 Response: 625764  
 Conc: 26.08 ng/ml



#26 AR-1254-1

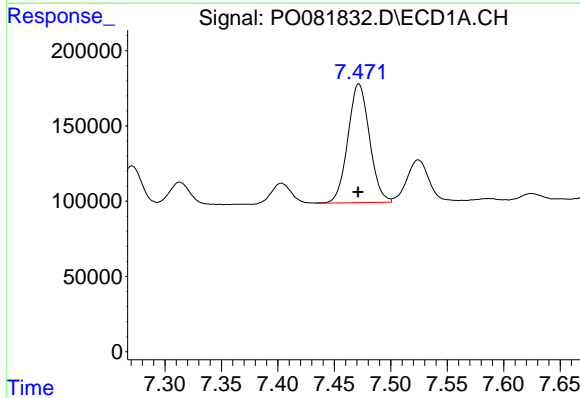
R.T.: 7.241 min  
 Delta R.T.: 0.001 min  
 Response: 692956  
 Conc: 259.92 ng/ml

Instrument :  
 ECD\_O  
 ClientSampleId :  
 AR1254ICC250



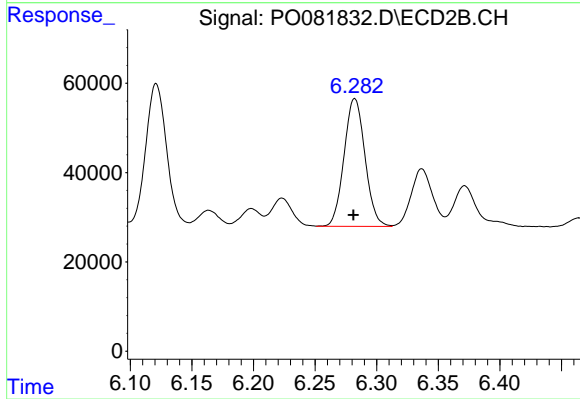
#26 AR-1254-1

R.T.: 6.121 min  
 Delta R.T.: 0.000 min  
 Response: 376305  
 Conc: 262.94 ng/ml



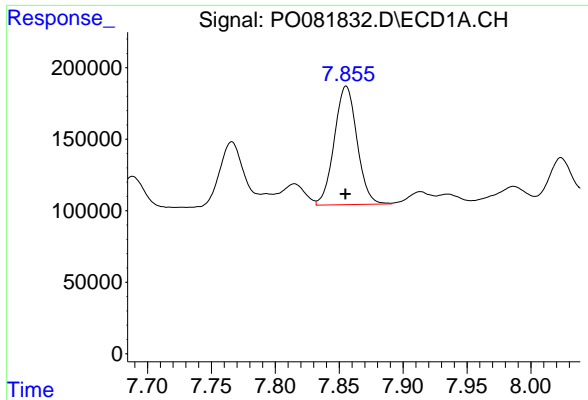
#27 AR-1254-2

R.T.: 7.472 min  
 Delta R.T.: 0.000 min  
 Response: 1051317  
 Conc: 260.17 ng/ml



#27 AR-1254-2

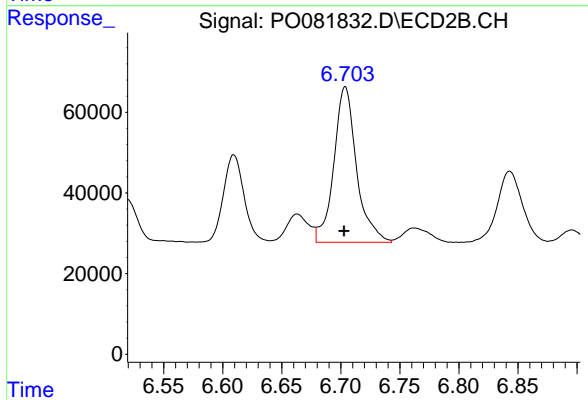
R.T.: 6.282 min  
 Delta R.T.: 0.001 min  
 Response: 338772  
 Conc: 261.25 ng/ml



#28 AR-1254-3

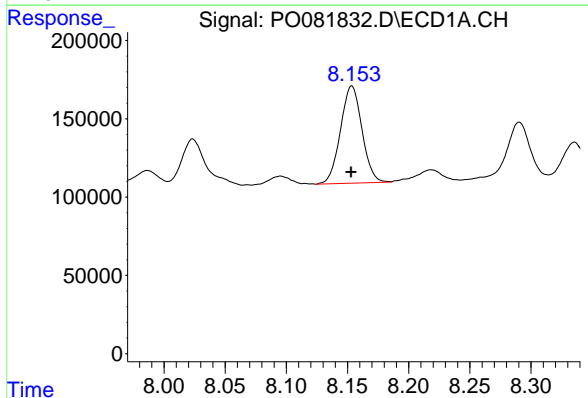
R.T.: 7.855 min  
Delta R.T.: 0.000 min  
Response: 1025752  
Conc: 253.32 ng/ml

Instrument :  
ECD\_O  
ClientSampleId :  
AR1254ICC250



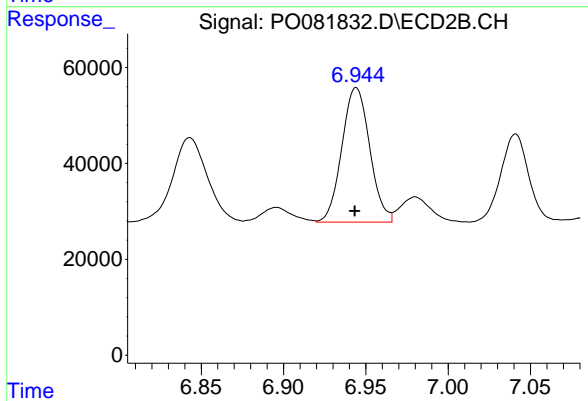
#28 AR-1254-3

R.T.: 6.704 min  
Delta R.T.: 0.001 min  
Response: 516763  
Conc: 261.51 ng/ml



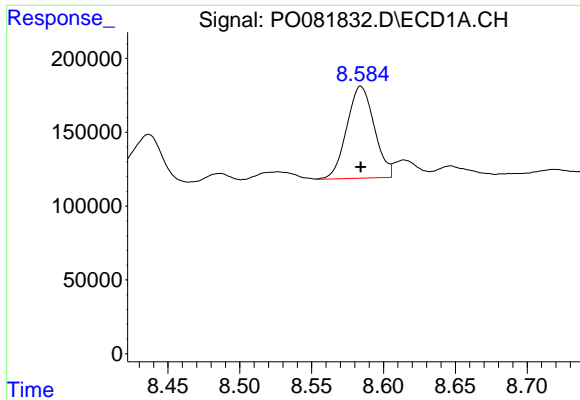
#29 AR-1254-4

R.T.: 8.154 min  
Delta R.T.: 0.000 min  
Response: 759977  
Conc: 252.71 ng/ml



#29 AR-1254-4

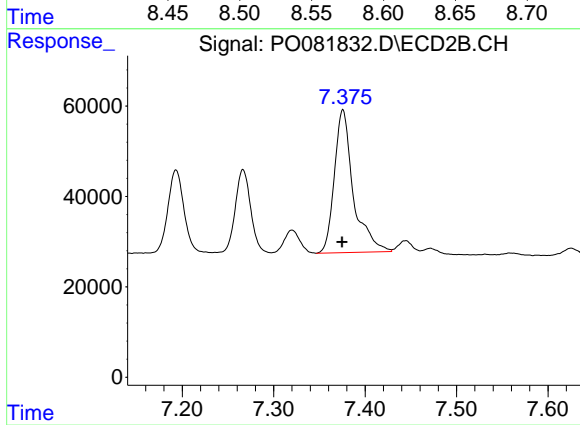
R.T.: 6.944 min  
Delta R.T.: 0.000 min  
Response: 330909  
Conc: 258.37 ng/ml



#30 AR-1254-5

R.T.: 8.584 min  
Delta R.T.: 0.000 min  
Response: 830147  
Conc: 250.11 ng/ml

Instrument :  
ECD\_O  
ClientSampled :  
AR1254ICC250



#30 AR-1254-5

R.T.: 7.376 min  
Delta R.T.: 0.000 min  
Response: 456968  
Conc: 247.81 ng/ml