

Data Path : Z:\pestpcbsrv\HPCHEM1\ECD_0\Data\PO100621\
 Data File : PO081840.D
 Signal(s) : Signal #1: ECD1A.CH Signal #2: ECD2B.CH
 Acq On : 07 Oct 2021 6:23
 Operator : AJ\MA
 Sample : PO100621ICV500
 Misc :
 ALS Vial : 31 Sample Multiplier: 1

Instrument :
 ECD_0
 ClientSampleId :
 ICVPO100621

Integration File signal 1: autoint1.e
 Integration File signal 2: autoint2.e
 Quant Time: Oct 07 07:36:30 2021
 Quant Method : Z:\pestpcbsrv\HPCHEM1\ECD_0\methods\PO100621.M
 Quant Title : GC EXTRACTABLES
 QLast Update : Thu Oct 07 07:33:07 2021
 Response via : Initial Calibration
 Integrator: ChemStation 6890 Scale Mode: Small noise peaks clipped

Volume Inj. : 2 µl
 Signal #1 Phase : ZB-MR1 Signal #2 Phase: ZB-MR2
 Signal #1 Info : 30Mx0.32mmx 0.50µ Signal #2 Info : 30M x 0.32mm x 0.25µm

Compound	RT#1	RT#2	Resp#1	Resp#2	ng/ml	ng/ml

System Monitoring Compounds						
1) SA Tetrachlo...	4.992	3.982	4244800	1294244	51.153	51.147
2) SA Decachlor...	11.111	9.316	3176012	1299197	53.545	54.997
Target Compounds						
3) L1 AR-1016-1	6.323	5.245	1435435	530278	519.055	510.909
4) L1 AR-1016-2	6.347	5.265	2072638	724634	514.799	505.730
5) L1 AR-1016-3	6.414	5.456	1302568	397691	529.029	520.481
6) L1 AR-1016-4	6.522	5.510	1042144	333562	528.845	521.770
7) L1 AR-1016-5	6.839	5.738	1024933	405860	541.869	522.286
31) L7 AR-1260-1	8.023	6.842	1698294	745810	540.898	518.047
32) L7 AR-1260-2	8.290	7.040	1970226	898896	520.422	520.641
33) L7 AR-1260-3	8.658	7.195	1331853	843290	538.670	510.017
34) L7 AR-1260-4	8.891	7.681	1618809	647166	512.810	538.264
35) L7 AR-1260-5	9.226	7.929	3084041	1505927	528.083	532.286

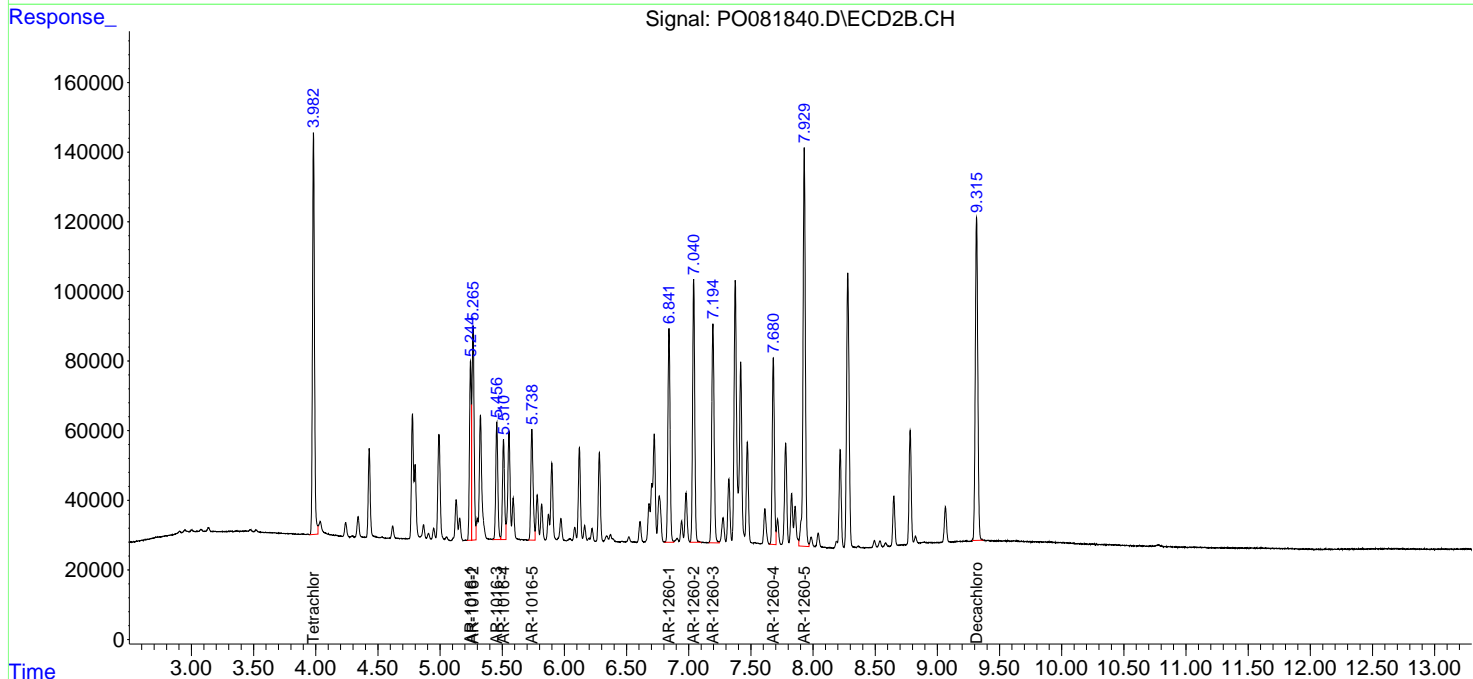
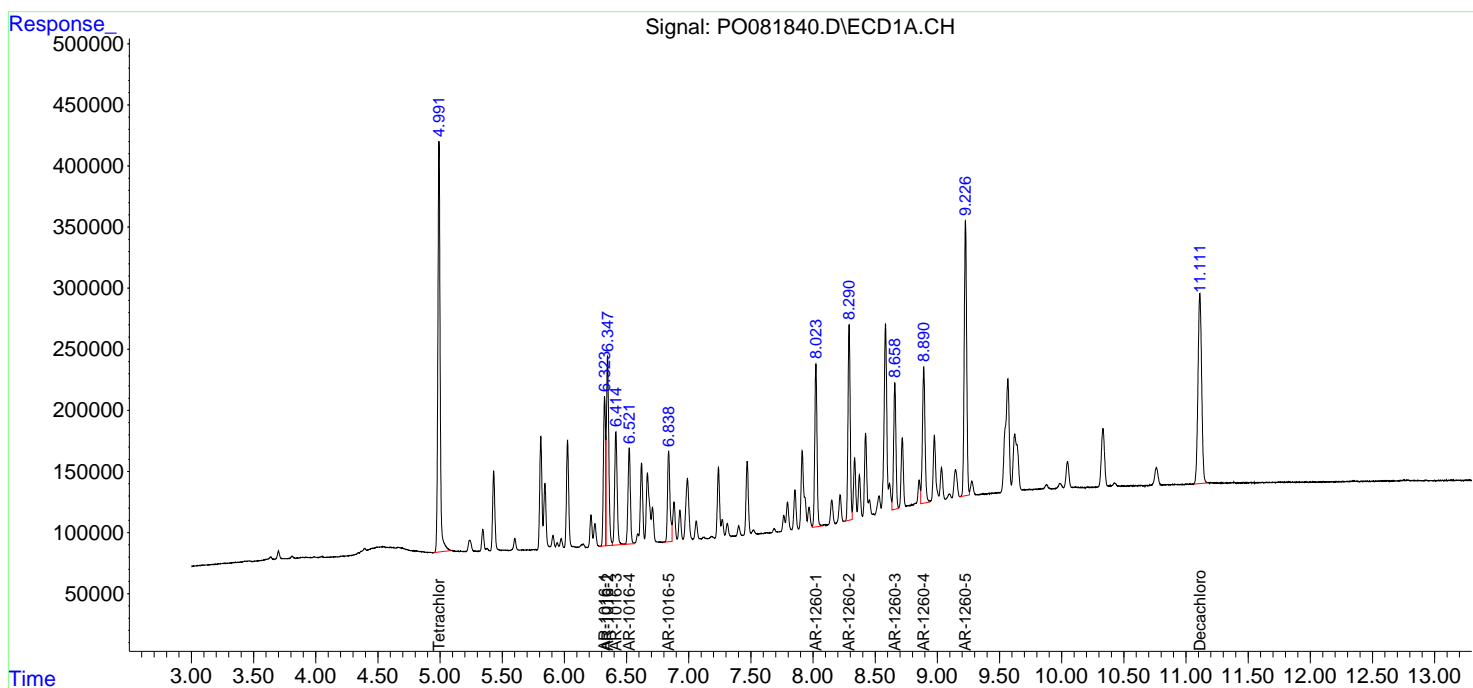
(f)=RT Delta > 1/2 Window (#)=Amounts differ by > 25% (m)=manual int.

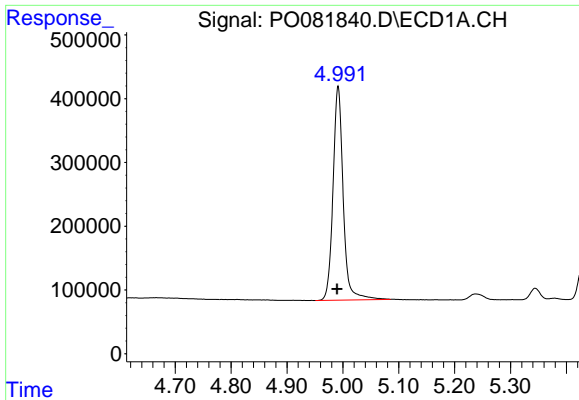
Data Path : Z:\pestpcbsrv\HPCHEM1\ECD_O\Data\PO100621\
 Data File : PO081840.D
 Signal(s) : Signal #1: ECD1A.CH Signal #2: ECD2B.CH
 Acq On : 07 Oct 2021 6:23
 Operator : AJ\MA
 Sample : PO100621ICV500
 Misc :
 ALS Vial : 31 Sample Multiplier: 1

Instrument :
 ECD_O
 ClientSampled :
 ICVPO100621

Integration File signal 1: autoint1.e
 Integration File signal 2: autoint2.e
 Quant Time: Oct 07 07:36:30 2021
 Quant Method : Z:\pestpcbsrv\HPCHEM1\ECD_O\methods\PO100621.M
 Quant Title : GC EXTRACTABLES
 QLast Update : Thu Oct 07 07:33:07 2021
 Response via : Initial Calibration
 Integrator: ChemStation 6890 Scale Mode: Small noise peaks clipped

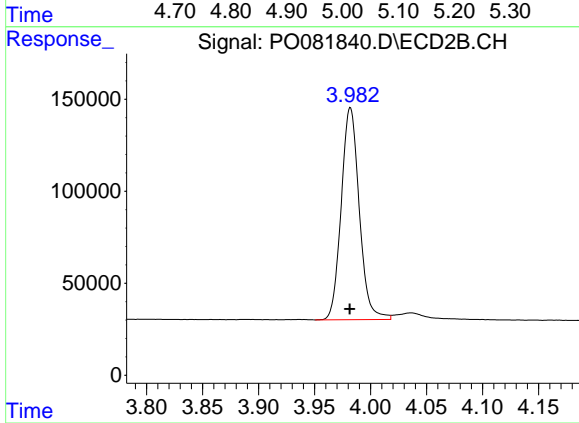
Volume Inj. : 2 µl
 Signal #1 Phase : ZB-MR1 Signal #2 Phase: ZB-MR2
 Signal #1 Info : 30Mx0.32mmx 0.50µ Signal #2 Info : 30M x 0.32mm x 0.25µm



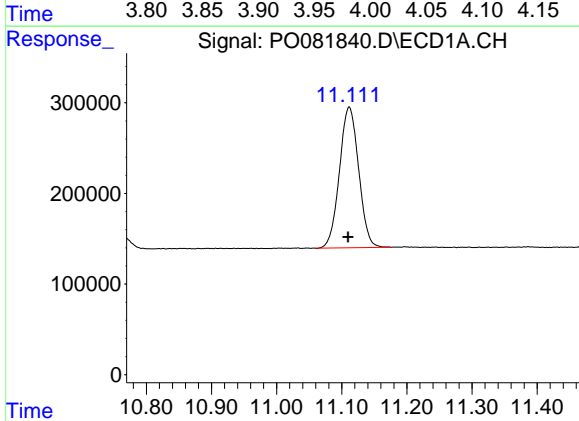


#1 Tetrachloro-m-xylene
 R.T.: 4.992 min
 Delta R.T.: 0.002 min
 Response: 4244800
 Conc: 51.15 ng/ml

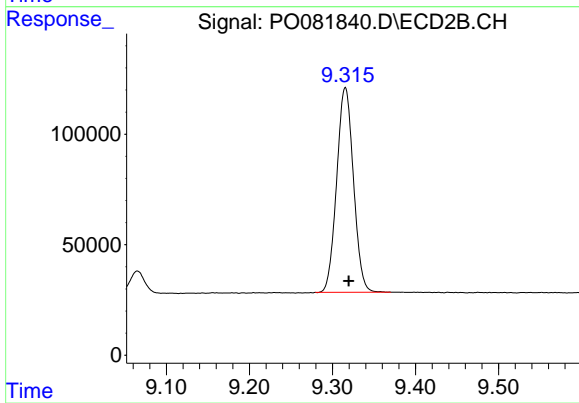
Instrument :
 ECD_O
 ClientSampleId :
 ICVPO100621



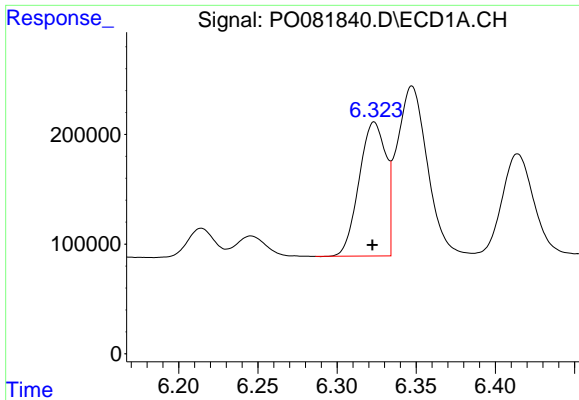
#1 Tetrachloro-m-xylene
 R.T.: 3.982 min
 Delta R.T.: 0.000 min
 Response: 1294244
 Conc: 51.15 ng/ml



#2 Decachlorobiphenyl
 R.T.: 11.111 min
 Delta R.T.: 0.002 min
 Response: 3176012
 Conc: 53.55 ng/ml



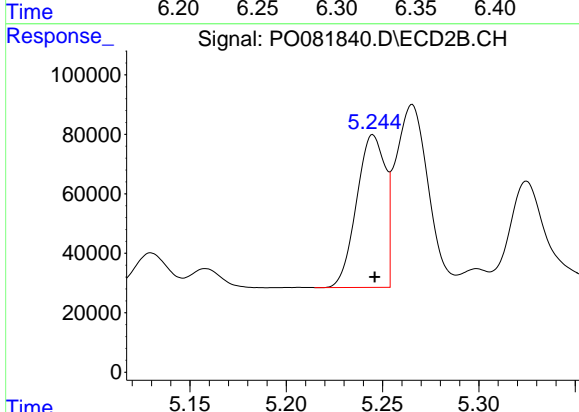
#2 Decachlorobiphenyl
 R.T.: 9.316 min
 Delta R.T.: -0.004 min
 Response: 1299197
 Conc: 55.00 ng/ml



#3 AR-1016-1

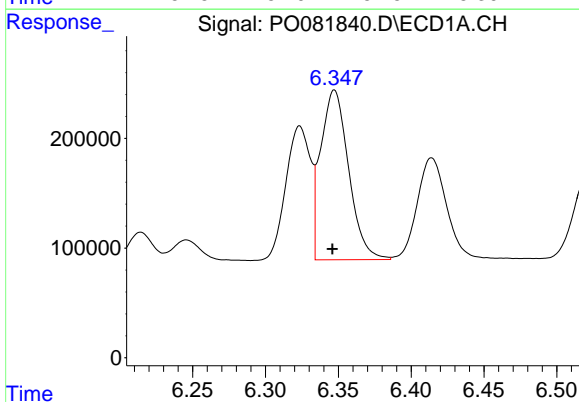
R.T.: 6.323 min
 Delta R.T.: 0.001 min
 Response: 1435435
 Conc: 519.05 ng/ml

Instrument :
 ECD_O
 ClientSampled :
 ICVPO100621



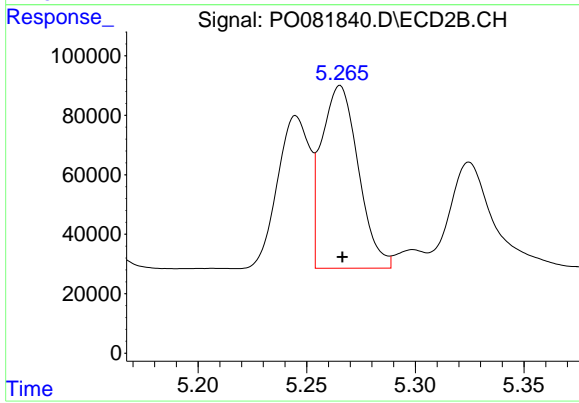
#3 AR-1016-1

R.T.: 5.245 min
 Delta R.T.: 0.000 min
 Response: 530278
 Conc: 510.91 ng/ml



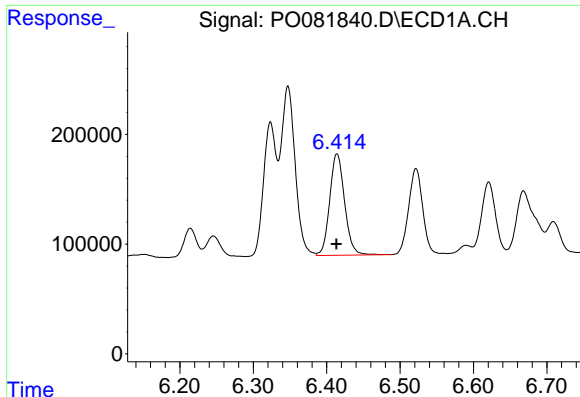
#4 AR-1016-2

R.T.: 6.347 min
 Delta R.T.: 0.002 min
 Response: 2072638
 Conc: 514.80 ng/ml



#4 AR-1016-2

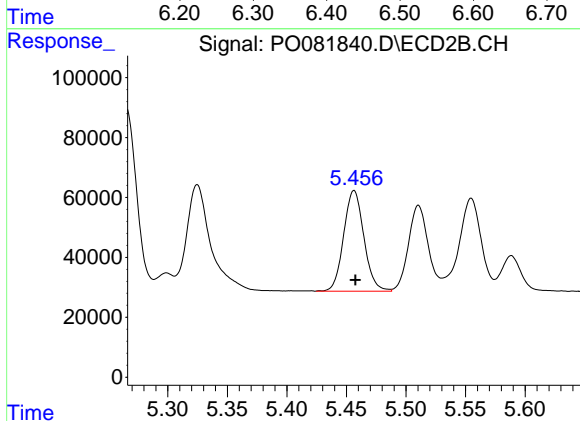
R.T.: 5.265 min
 Delta R.T.: -0.001 min
 Response: 724634
 Conc: 505.73 ng/ml



#5 AR-1016-3

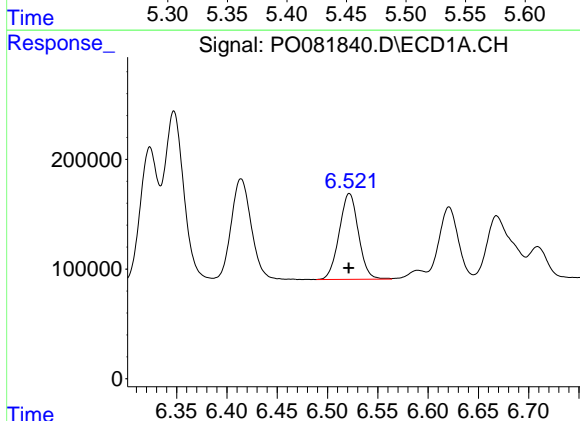
R.T.: 6.414 min
 Delta R.T.: 0.000 min
 Response: 1302568
 Conc: 529.03 ng/ml

Instrument :
 ECD_O
 ClientSampleId :
 ICVPO100621



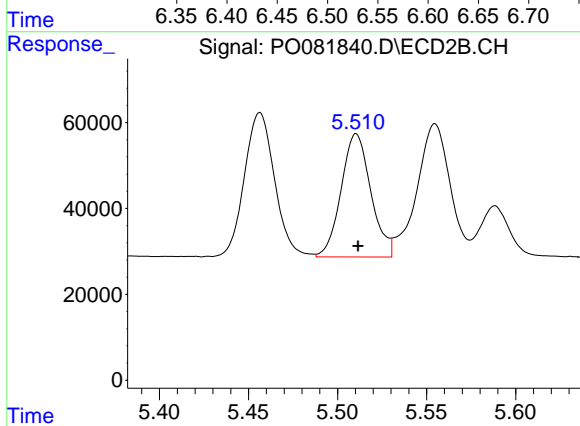
#5 AR-1016-3

R.T.: 5.456 min
 Delta R.T.: -0.001 min
 Response: 397691
 Conc: 520.48 ng/ml



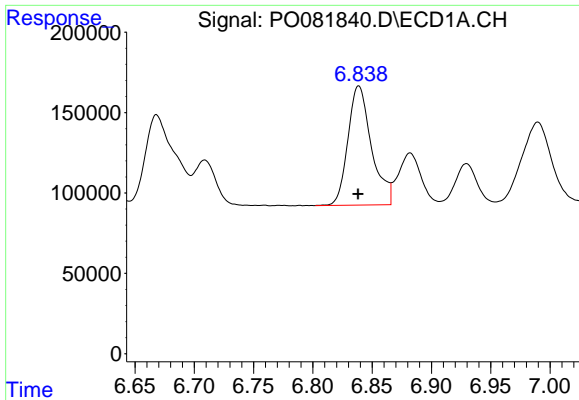
#6 AR-1016-4

R.T.: 6.522 min
 Delta R.T.: 0.000 min
 Response: 1042144
 Conc: 528.85 ng/ml



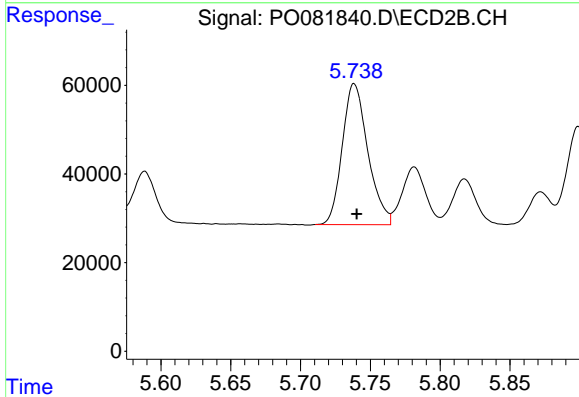
#6 AR-1016-4

R.T.: 5.510 min
 Delta R.T.: -0.001 min
 Response: 333562
 Conc: 521.77 ng/ml

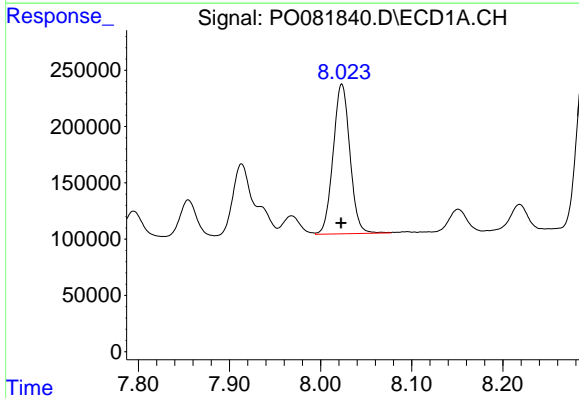


#7 AR-1016-5
 R.T.: 6.839 min
 Delta R.T.: 0.000 min
 Response: 1024933
 Conc: 541.87 ng/ml

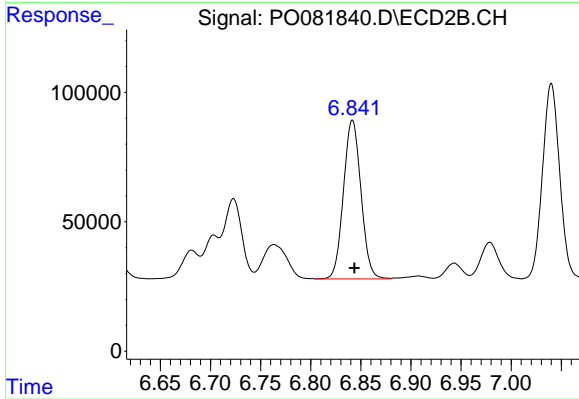
Instrument :
 ECD_O
 ClientSampleId :
 ICVPO100621



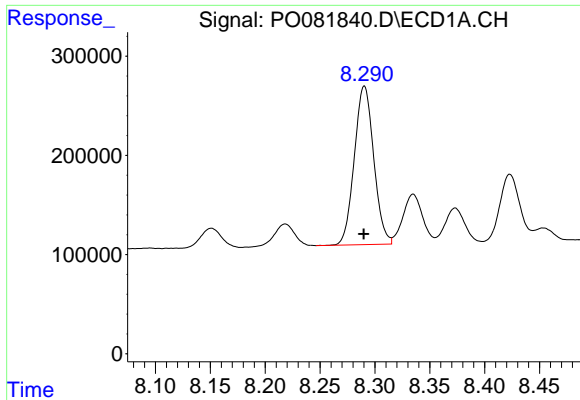
#7 AR-1016-5
 R.T.: 5.738 min
 Delta R.T.: -0.002 min
 Response: 405860
 Conc: 522.29 ng/ml



#31 AR-1260-1
 R.T.: 8.023 min
 Delta R.T.: 0.000 min
 Response: 1698294
 Conc: 540.90 ng/ml



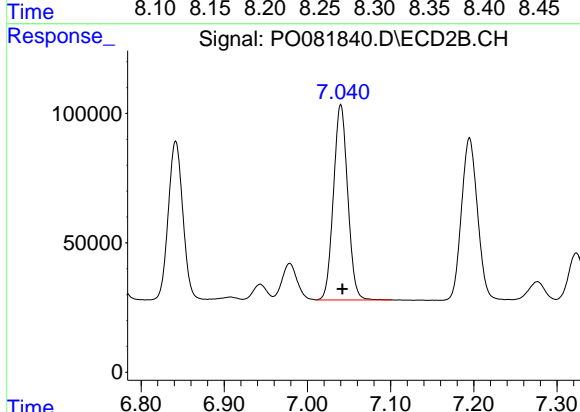
#31 AR-1260-1
 R.T.: 6.842 min
 Delta R.T.: -0.002 min
 Response: 745810
 Conc: 518.05 ng/ml



#32 AR-1260-2

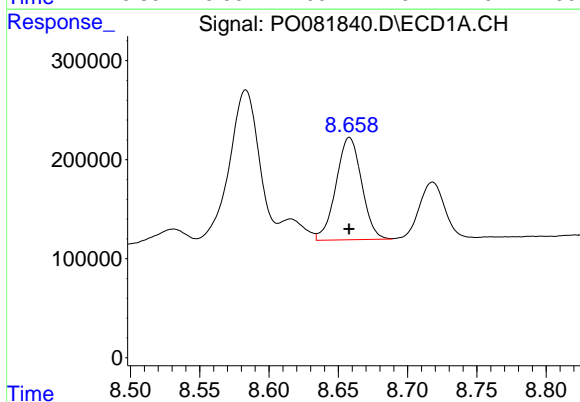
R.T.: 8.290 min
 Delta R.T.: 0.000 min
 Response: 1970226
 Conc: 520.42 ng/ml

Instrument :
 ECD_O
ClientSampled :
 ICVPO100621



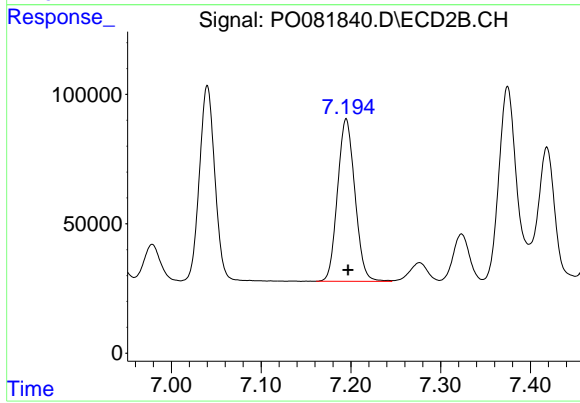
#32 AR-1260-2

R.T.: 7.040 min
 Delta R.T.: -0.002 min
 Response: 898896
 Conc: 520.64 ng/ml



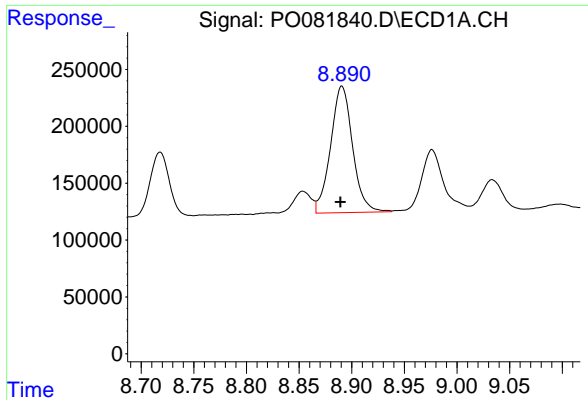
#33 AR-1260-3

R.T.: 8.658 min
 Delta R.T.: 0.000 min
 Response: 1331853
 Conc: 538.67 ng/ml



#33 AR-1260-3

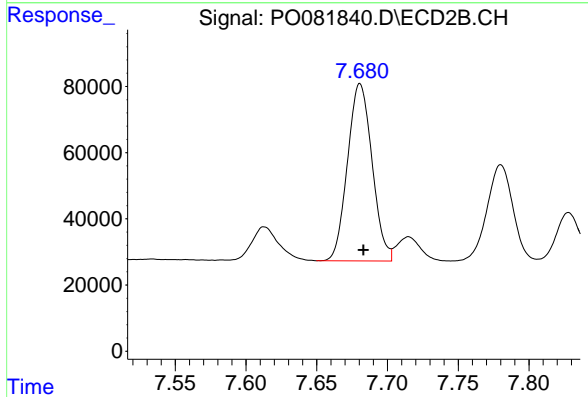
R.T.: 7.195 min
 Delta R.T.: -0.002 min
 Response: 843290
 Conc: 510.02 ng/ml



#34 AR-1260-4

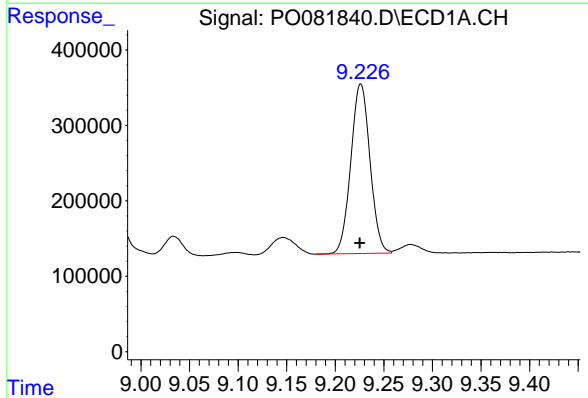
R.T.: 8.891 min
 Delta R.T.: 0.001 min
 Response: 1618809
 Conc: 512.81 ng/ml

Instrument :
 ECD_O
 ClientSampled :
 ICVPO100621



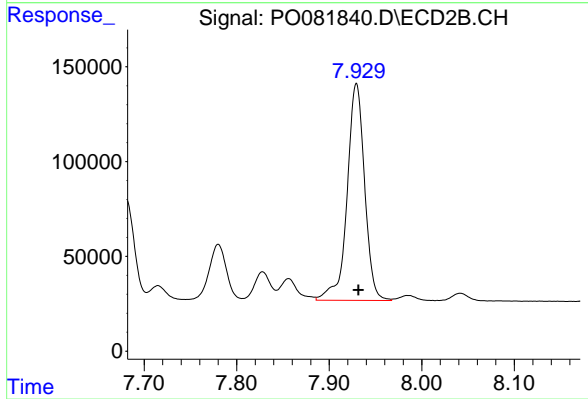
#34 AR-1260-4

R.T.: 7.681 min
 Delta R.T.: -0.002 min
 Response: 647166
 Conc: 538.26 ng/ml



#35 AR-1260-5

R.T.: 9.226 min
 Delta R.T.: 0.000 min
 Response: 3084041
 Conc: 528.08 ng/ml



#35 AR-1260-5

R.T.: 7.929 min
 Delta R.T.: -0.002 min
 Response: 1505927
 Conc: 532.29 ng/ml