

Data Path : Z:\pestpcbsrv\HPCHEM1\ECD_0\Data\PO100622\
 Data File : PO089782.D
 Signal(s) : Signal #1: ECD1A.ch Signal #2: ECD2B.ch
 Acq On : 06 Oct 2022 14:45
 Operator : YP/AJ
 Sample : PB148145BL
 Misc :
 ALS Vial : 7 Sample Multiplier: 1

Instrument :
 ECD_0
 ClientSampleId :
 PB148145BL

Integration File signal 1: autoint1.e
 Integration File signal 2: autoint2.e
 Quant Time: Oct 06 18:12:12 2022
 Quant Method : Z:\pestpcbsrv\HPCHEM1\ECD_0\methods\PO100422.M
 Quant Title : GC EXTRACTABLES
 QLast Update : Wed Oct 05 06:04:42 2022
 Response via : Initial Calibration
 Integrator: ChemStation

Volume Inj. : 2 µl
 Signal #1 Phase : ZB-MR2 Signal #2 Phase: ZB-MR2
 Signal #1 Info : 30Mx0.32mmx 0.50µ Signal #2 Info : 30M x 0.32mm x 0.25µm

Compound	RT#1	RT#2	Resp#1	Resp#2	ng/ml	ng/ml

System Monitoring Compounds						
1) SA Tetrachlo...	4.335	3.561	55208585	19363219	21.235	21.441
2) SA Decachlor...	10.097	8.593	27156890	16909430	25.263	21.280
Target Compounds						
3) L1 AR-1016-1	5.562f	0.000	240608	0	3.436	N.D. #
4) L1 AR-1016-2	5.562f	0.000	240608	0	2.384	N.D. #
5) L1 AR-1016-3	5.562	0.000	240608	0	3.862	N.D. #
9) L2 AR-1221-2	4.640	3.861	798697	335575	36.011	42.345
10) L2 AR-1221-3	4.755f	0.000	90421	0	1.342	N.D. #
11) L3 AR-1232-1	4.755f	0.000	90421	0	1.646	N.D. #
12) L3 AR-1232-2	5.075	0.000	219946	0	9.294	N.D. #
13) L3 AR-1232-3	5.562	0.000	240608	0	5.354	N.D. #
16) L4 AR-1242-1	5.562f	0.000	240608	0	3.909	N.D. #
17) L4 AR-1242-2	5.562f	0.000	240608	0	2.719	N.D. #
18) L4 AR-1242-3	5.562	0.000	240608	0	4.342	N.D. #
20) L4 AR-1242-5	6.407	0.000	153992	0	3.726	N.D. #
21) L5 AR-1248-1	5.562f	0.000	240608	0	5.290	N.D. #
24) L5 AR-1248-4	6.385	0.000	355321	0	4.921	N.D. #
25) L5 AR-1248-5	6.407	0.000	153992	0	2.208	N.D. #
26) L6 AR-1254-1	6.385	0.000	355321	0	4.870	N.D. #
28) L6 AR-1254-3	6.951	0.000	1007173	0	9.245	N.D. #
29) L6 AR-1254-4	7.172f	0.000	181264	0	2.437	N.D. #
30) L6 AR-1254-5	7.620f	0.000	77216	0	1.018	N.D. #
31) L7 AR-1260-1	7.172f	0.000	181264	0	2.307	N.D. #
32) L7 AR-1260-2	7.391	6.315	120616	379699	1.396	6.475 #
33) L7 AR-1260-3	7.620f	0.000	77216	0	0.828	N.D. #
34) L7 AR-1260-4	7.965	0.000	236045	0	3.614	N.D. #
35) L7 AR-1260-5	8.322f	7.197	192884	81987	1.589	0.799 #
36) L8 AR-1262-1	7.739	0.000	313425	0	3.497	N.D. #
37) L8 AR-1262-2	8.322f	7.197	192884	81987	1.365	0.718 #
40) L8 AR-1262-5	9.338	8.008f	101661	28541	1.985	0.784 #
43) L9 AR-1268-3	0.000	7.764	0	9864	N.D.	0.102 #
44) L9 AR-1268-4	9.338	8.008f	101661	28541	1.806	0.724 #
45) L9 AR-1268-5	9.765	0.000	502595	0	1.309	N.D. #

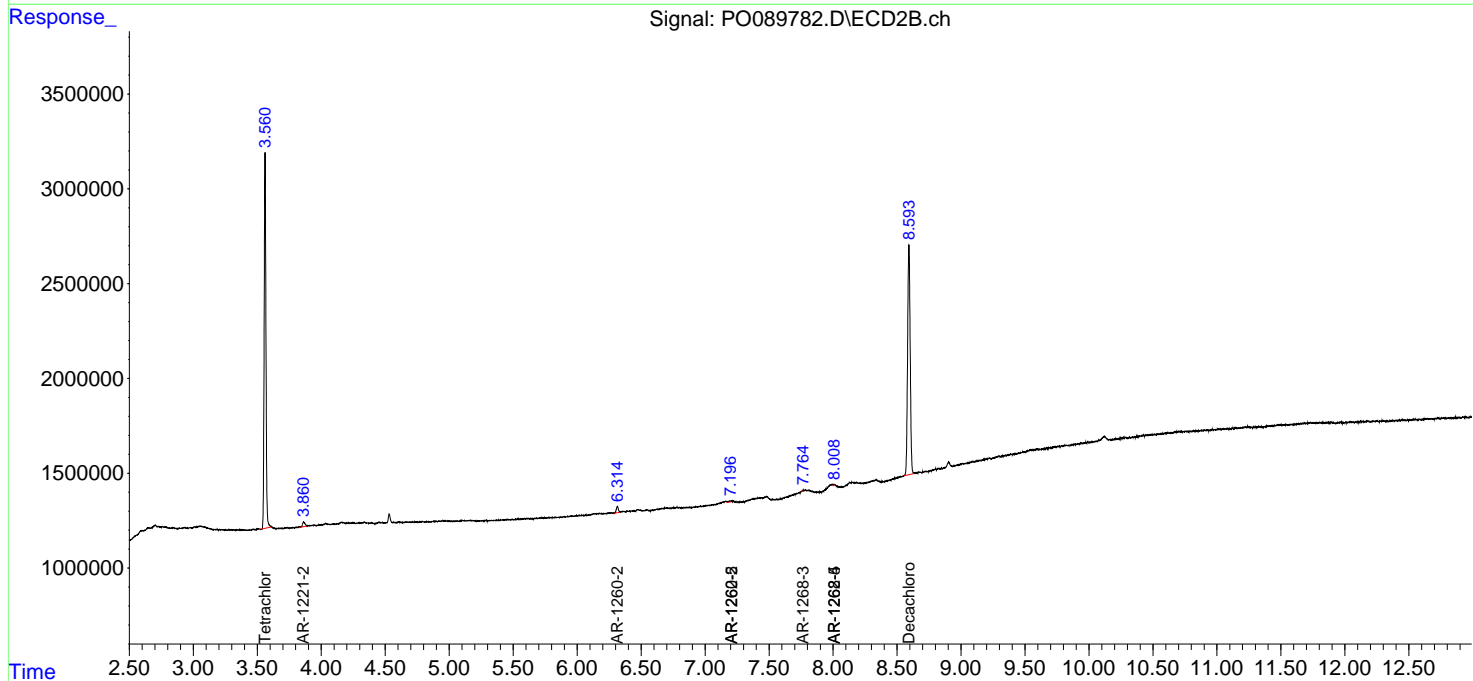
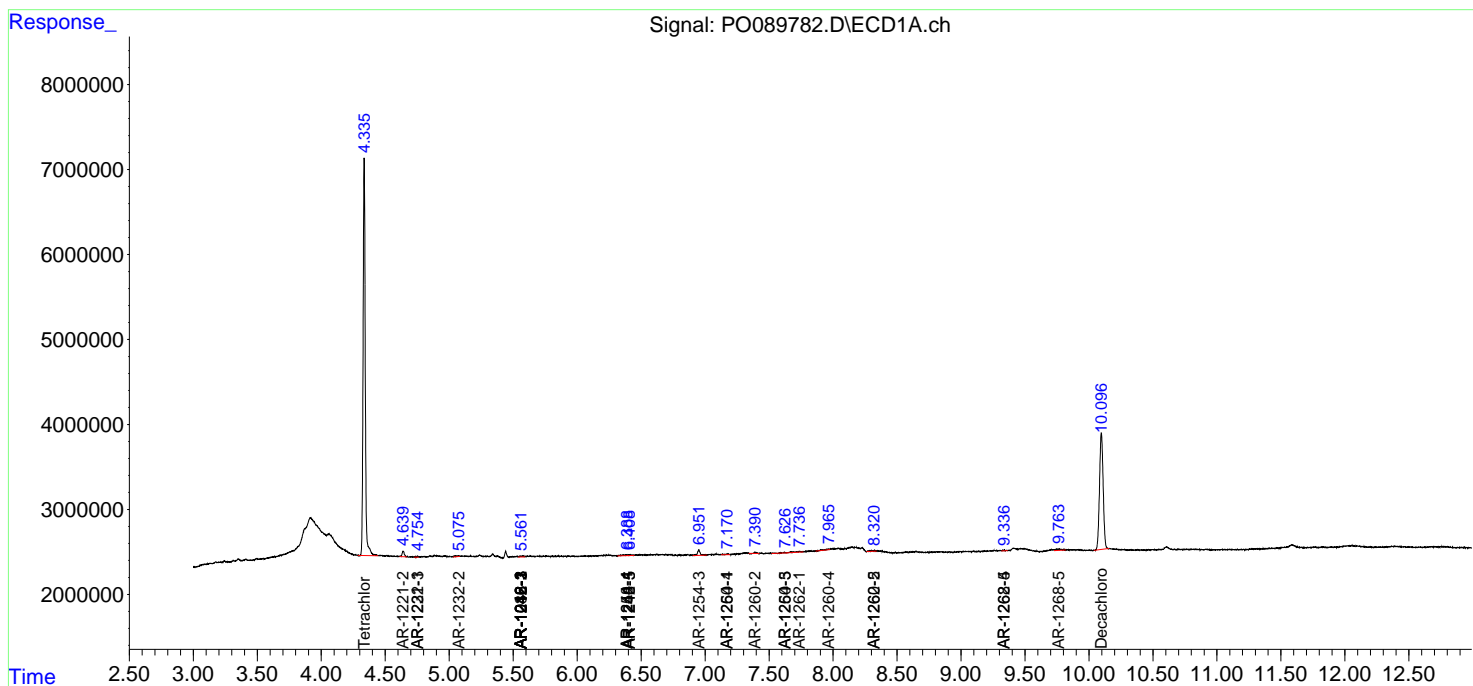
(f)=RT Delta > 1/2 Window (#)=Amounts differ by > 25% (m)=manual int.

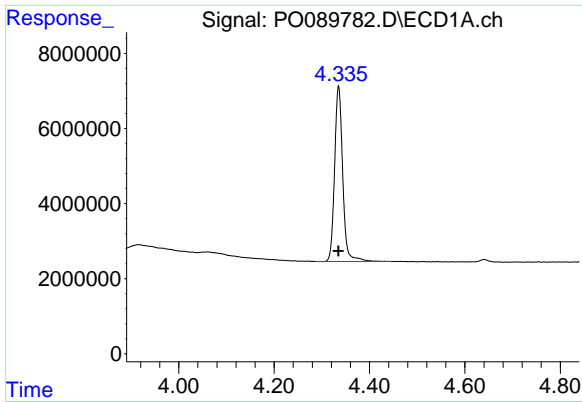
Data Path : Z:\pestpcbsrv\HPCHEM1\ECD_O\Data\PO100622\
 Data File : PO089782.D
 Signal(s) : Signal #1: ECD1A.ch Signal #2: ECD2B.ch
 Acq On : 06 Oct 2022 14:45
 Operator : YP/AJ
 Sample : PB148145BL
 Misc :
 ALS Vial : 7 Sample Multiplier: 1

Instrument :
 ECD_O
 ClientSampleId :
 PB148145BL

Integration File signal 1: autoint1.e
 Integration File signal 2: autoint2.e
 Quant Time: Oct 06 18:12:12 2022
 Quant Method : Z:\pestpcbsrv\HPCHEM1\ECD_O\methods\PO100422.M
 Quant Title : GC EXTRACTABLES
 QLast Update : Wed Oct 05 06:04:42 2022
 Response via : Initial Calibration
 Integrator: ChemStation

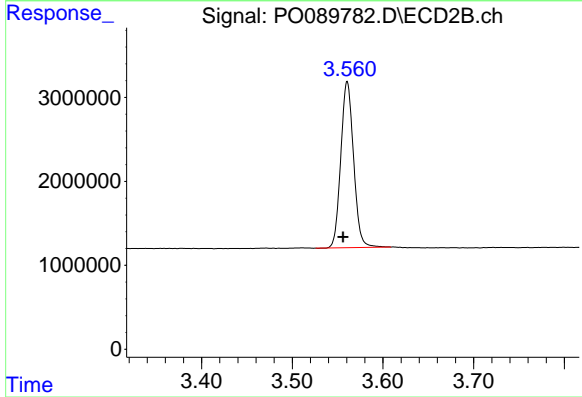
Volume Inj. : 2 µl
 Signal #1 Phase : ZB-MR1 Signal #2 Phase: ZB-MR2
 Signal #1 Info : 30Mx0.32mmx 0.50µ Signal #2 Info : 30M x 0.32mm x 0.25µm



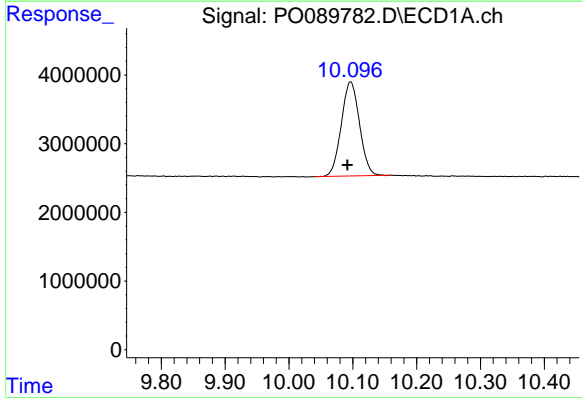


#1 Tetrachloro-m-xylene
 R.T.: 4.335 min
 Delta R.T.: 0.000 min
 Response: 55208585
 Conc: 21.24 ng/ml

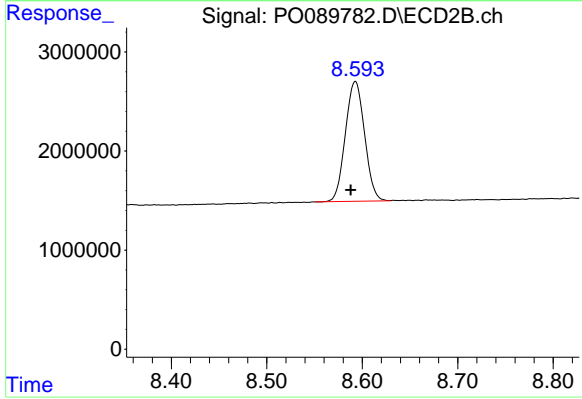
Instrument :
 ECD_O
 ClientSampleId :
 PB148145BL



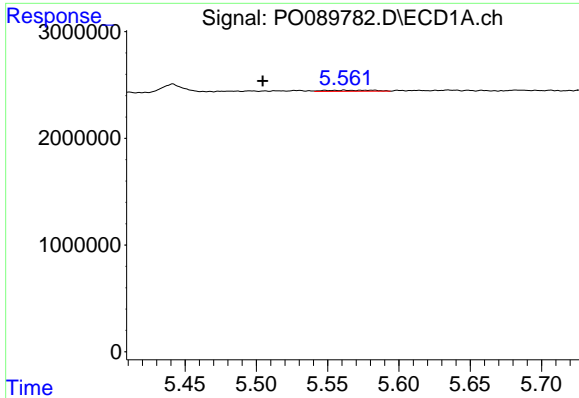
#1 Tetrachloro-m-xylene
 R.T.: 3.561 min
 Delta R.T.: 0.004 min
 Response: 19363219
 Conc: 21.44 ng/ml



#2 Decachlorobiphenyl
 R.T.: 10.097 min
 Delta R.T.: 0.005 min
 Response: 27156890
 Conc: 25.26 ng/ml

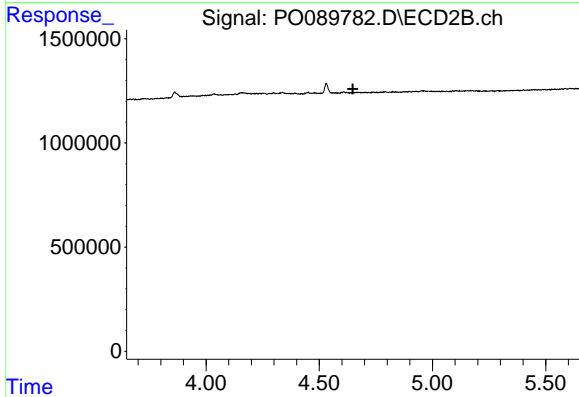


#2 Decachlorobiphenyl
 R.T.: 8.593 min
 Delta R.T.: 0.005 min
 Response: 16909430
 Conc: 21.28 ng/ml

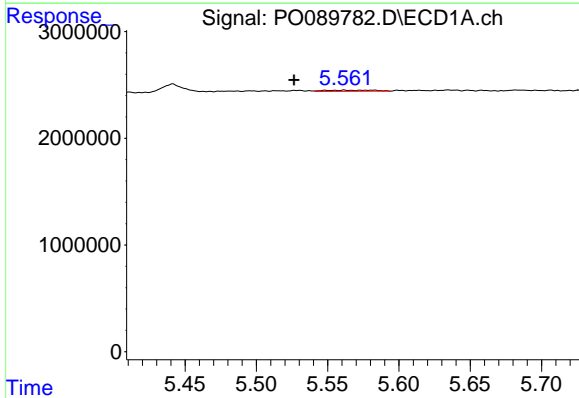


#3 AR-1016-1
 R.T.: 5.562 min
 Delta R.T.: 0.057 min
 Response: 240608
 Conc: 3.44 ng/ml

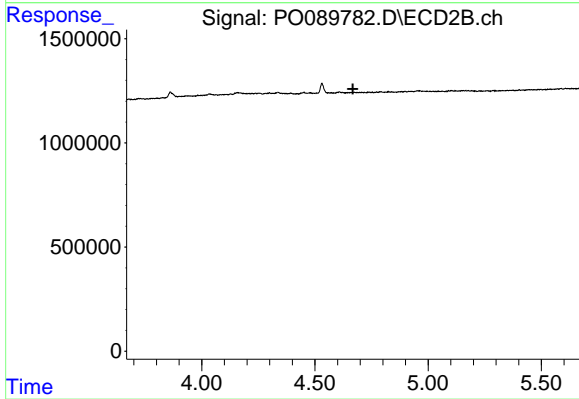
Instrument :
 ECD_O
 ClientSampleId :
 PB148145BL



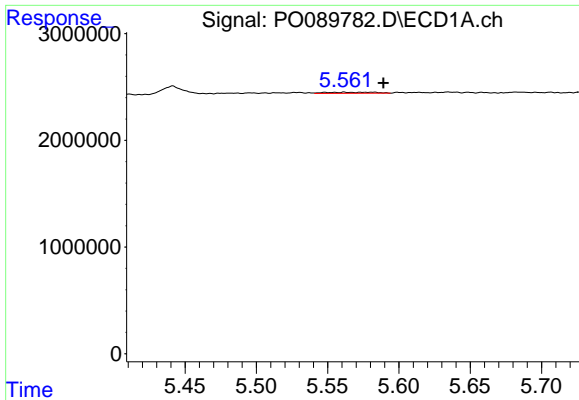
#3 AR-1016-1
 R.T.: 0.000 min
 Exp R.T. : 4.649 min
 Response: 0
 Conc: N.D.



#4 AR-1016-2
 R.T.: 5.562 min
 Delta R.T.: 0.035 min
 Response: 240608
 Conc: 2.38 ng/ml



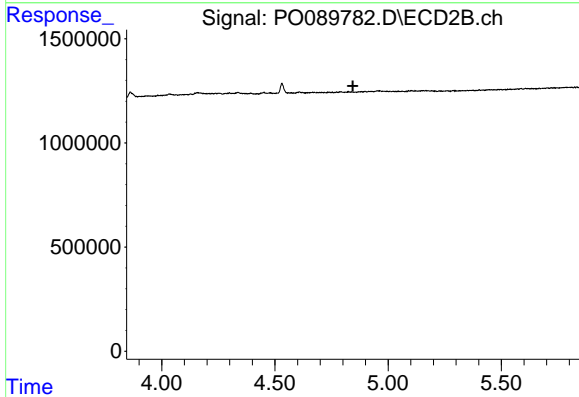
#4 AR-1016-2
 R.T.: 0.000 min
 Exp R.T. : 4.668 min
 Response: 0
 Conc: N.D.



#5 AR-1016-3

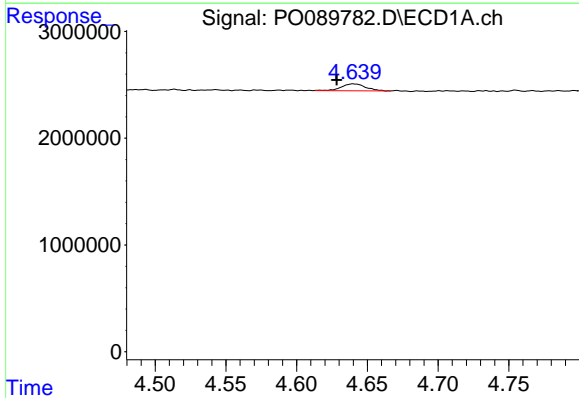
R.T.: 5.562 min
 Delta R.T.: -0.027 min
 Response: 240608
 Conc: 3.86 ng/ml

Instrument :
 ECD_O
 ClientSampleId :
 PB148145BL



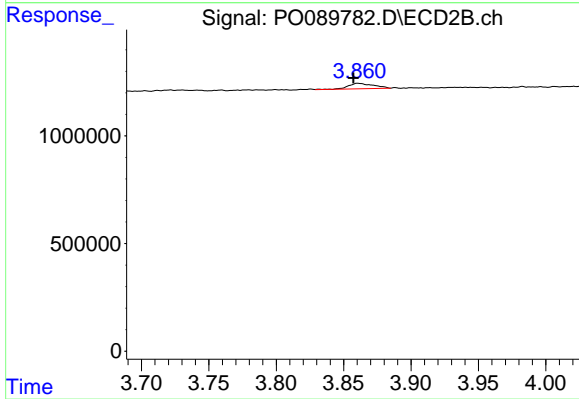
#5 AR-1016-3

R.T.: 0.000 min
 Exp R.T. : 4.844 min
 Response: 0
 Conc: N.D.



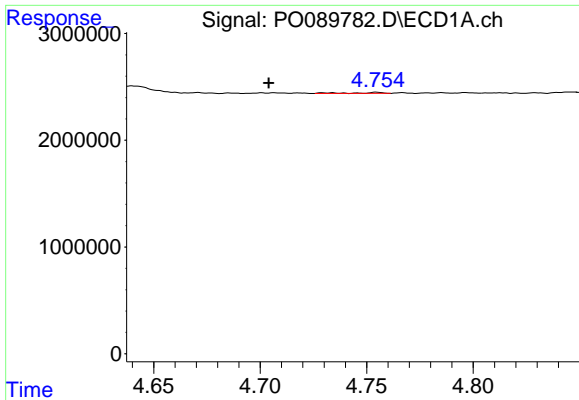
#9 AR-1221-2

R.T.: 4.640 min
 Delta R.T.: 0.012 min
 Response: 798697
 Conc: 36.01 ng/ml



#9 AR-1221-2

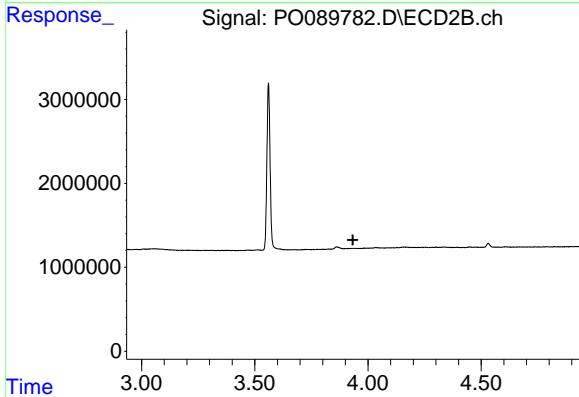
R.T.: 3.861 min
 Delta R.T.: 0.003 min
 Response: 335575
 Conc: 42.34 ng/ml



#10 AR-1221-3

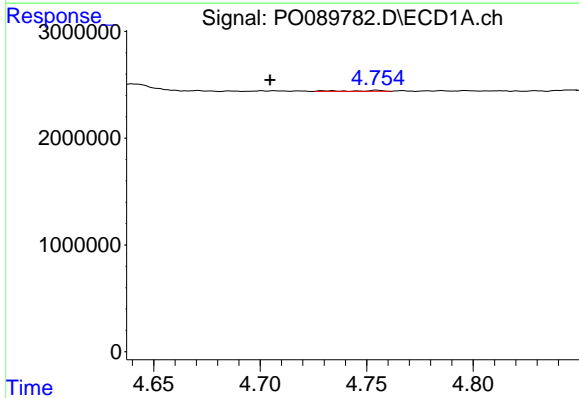
R.T.: 4.755 min
 Delta R.T.: 0.051 min
 Response: 90421
 Conc: 1.34 ng/ml

Instrument :
 ECD_O
 ClientSampleId :
 PB148145BL



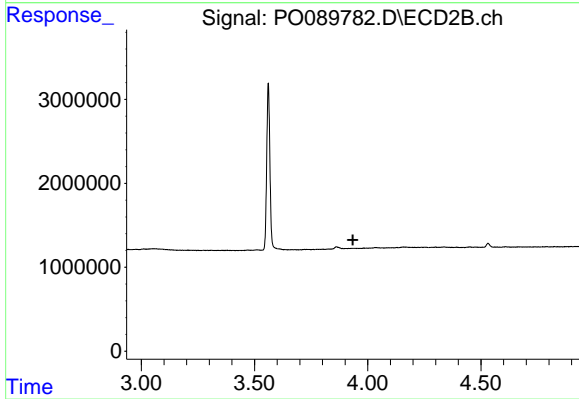
#10 AR-1221-3

R.T.: 0.000 min
 Exp R.T. : 3.934 min
 Response: 0
 Conc: N.D.



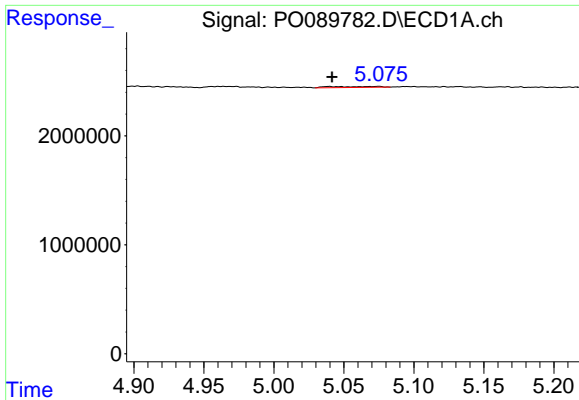
#11 AR-1232-1

R.T.: 4.755 min
 Delta R.T.: 0.050 min
 Response: 90421
 Conc: 1.65 ng/ml



#11 AR-1232-1

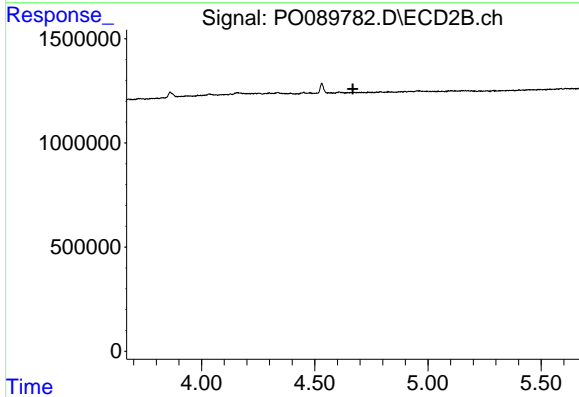
R.T.: 0.000 min
 Exp R.T. : 3.934 min
 Response: 0
 Conc: N.D.



#12 AR-1232-2

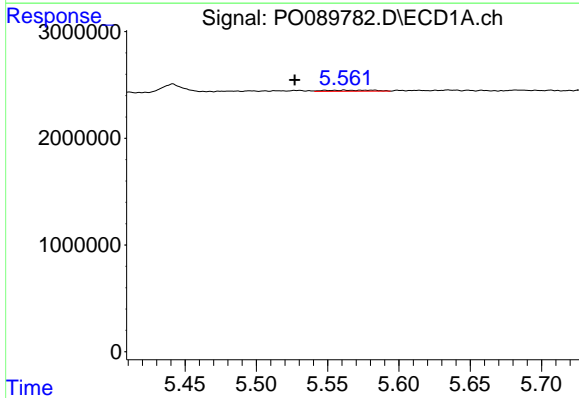
R.T.: 5.075 min
 Delta R.T.: 0.033 min
 Response: 219946
 Conc: 9.29 ng/ml

Instrument :
 ECD_O
 ClientSampleId :
 PB148145BL



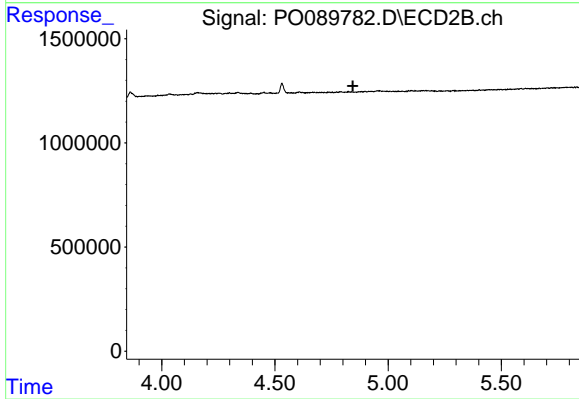
#12 AR-1232-2

R.T.: 0.000 min
 Exp R.T. : 4.668 min
 Response: 0
 Conc: N.D.



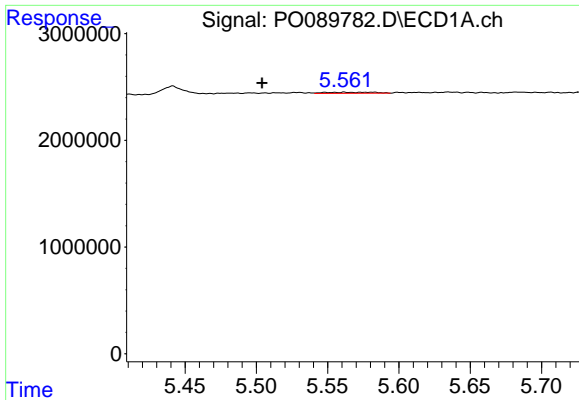
#13 AR-1232-3

R.T.: 5.562 min
 Delta R.T.: 0.035 min
 Response: 240608
 Conc: 5.35 ng/ml



#13 AR-1232-3

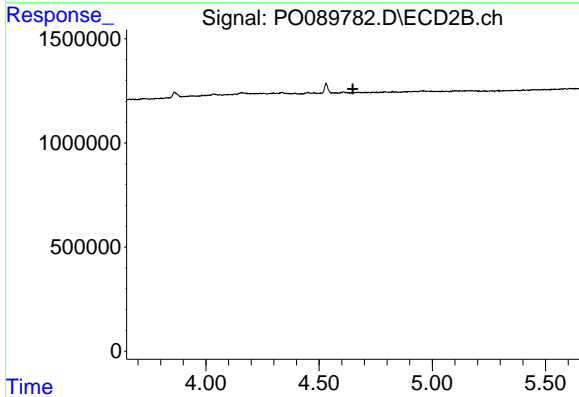
R.T.: 0.000 min
 Exp R.T. : 4.845 min
 Response: 0
 Conc: N.D.



#16 AR-1242-1

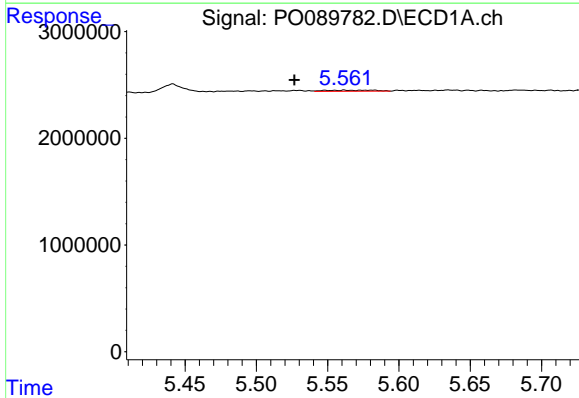
R.T.: 5.562 min
 Delta R.T.: 0.058 min
 Response: 240608
 Conc: 3.91 ng/ml

Instrument :
 ECD_O
 ClientSampleId :
 PB148145BL



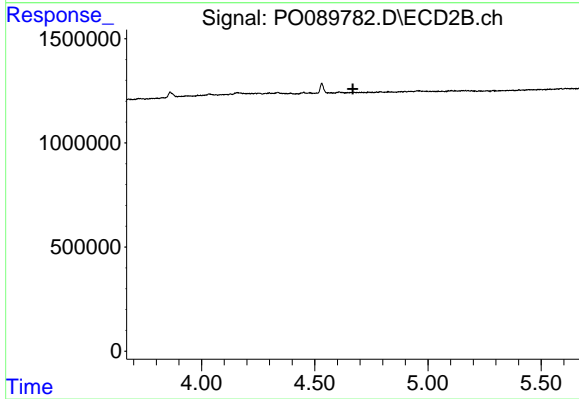
#16 AR-1242-1

R.T.: 0.000 min
 Exp R.T. : 4.649 min
 Response: 0
 Conc: N.D.



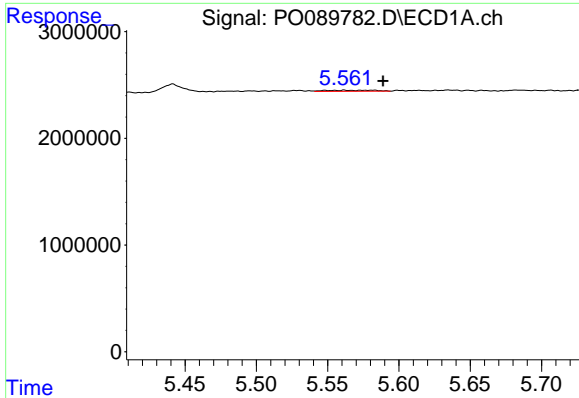
#17 AR-1242-2

R.T.: 5.562 min
 Delta R.T.: 0.035 min
 Response: 240608
 Conc: 2.72 ng/ml



#17 AR-1242-2

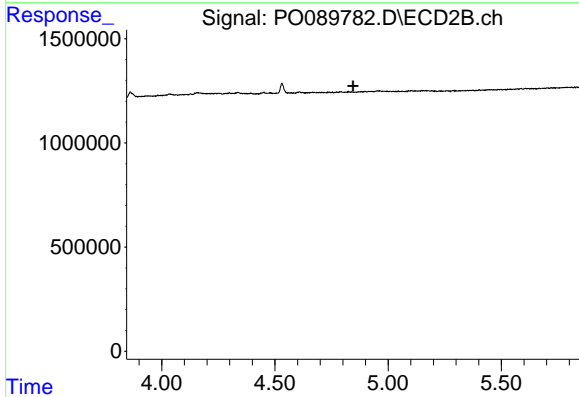
R.T.: 0.000 min
 Exp R.T. : 4.669 min
 Response: 0
 Conc: N.D.



#18 AR-1242-3

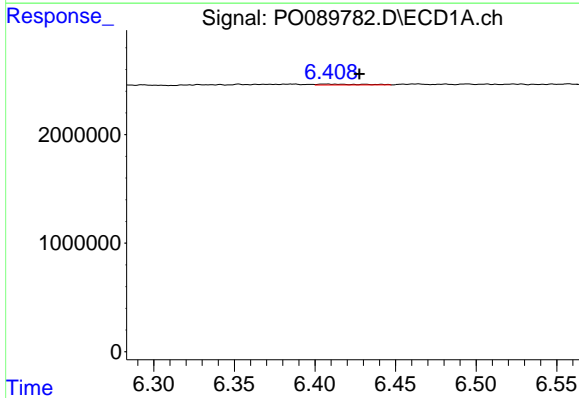
R.T.: 5.562 min
 Delta R.T.: -0.027 min
 Response: 240608
 Conc: 4.34 ng/ml

Instrument :
 ECD_O
 ClientSampleId :
 PB148145BL



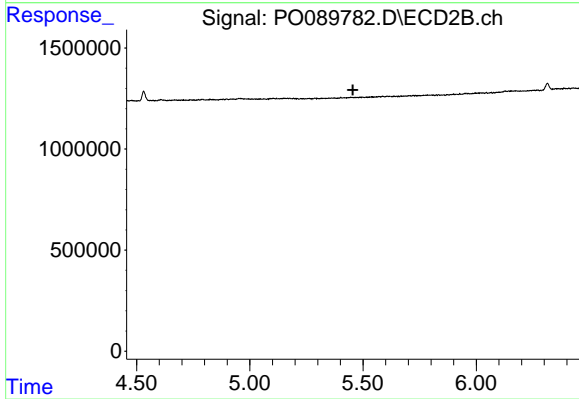
#18 AR-1242-3

R.T.: 0.000 min
 Exp R.T. : 4.845 min
 Response: 0
 Conc: N.D.



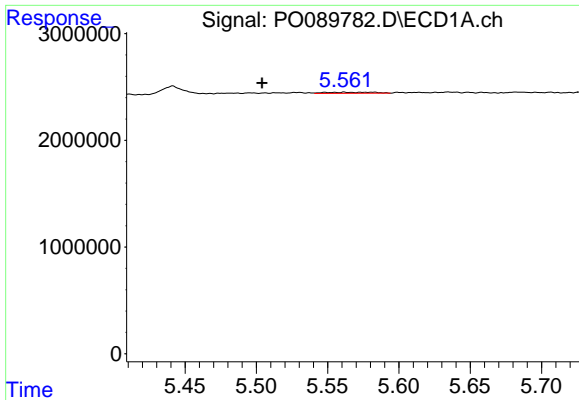
#20 AR-1242-5

R.T.: 6.407 min
 Delta R.T.: -0.020 min
 Response: 153992
 Conc: 3.73 ng/ml



#20 AR-1242-5

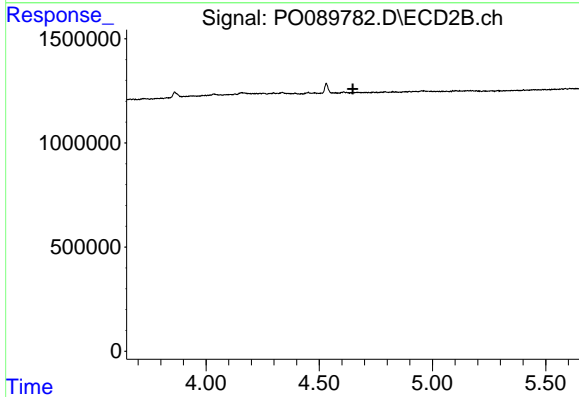
R.T.: 0.000 min
 Exp R.T. : 5.455 min
 Response: 0
 Conc: N.D.



#21 AR-1248-1

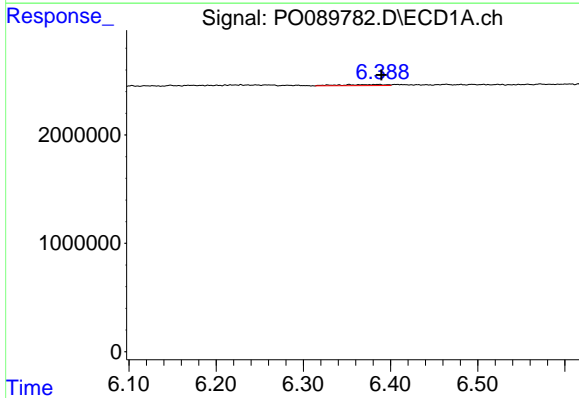
R.T.: 5.562 min
 Delta R.T.: 0.058 min
 Response: 240608
 Conc: 5.29 ng/ml

Instrument :
 ECD_O
 ClientSampleId :
 PB148145BL



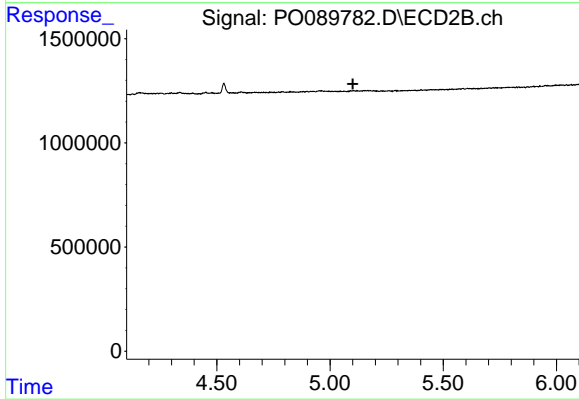
#21 AR-1248-1

R.T.: 0.000 min
 Exp R.T. : 4.649 min
 Response: 0
 Conc: N.D.



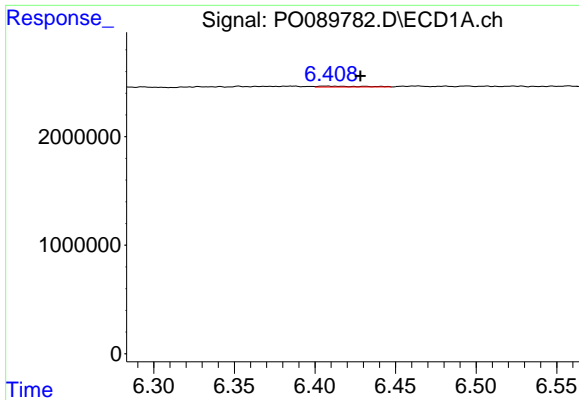
#24 AR-1248-4

R.T.: 6.385 min
 Delta R.T.: -0.004 min
 Response: 355321
 Conc: 4.92 ng/ml



#24 AR-1248-4

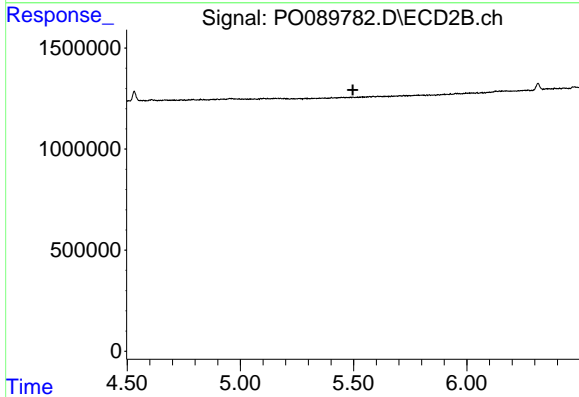
R.T.: 0.000 min
 Exp R.T. : 5.101 min
 Response: 0
 Conc: N.D.



#25 AR-1248-5

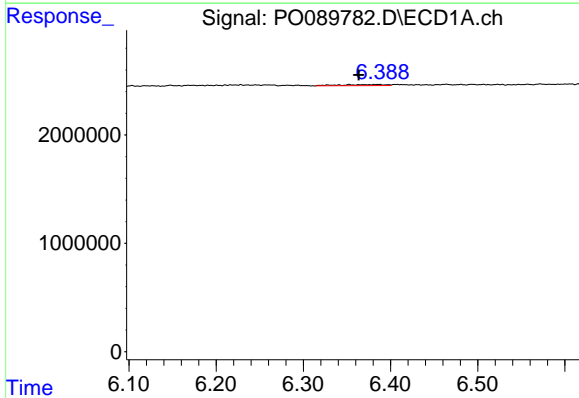
R.T.: 6.407 min
 Delta R.T.: -0.021 min
 Response: 153992
 Conc: 2.21 ng/ml

Instrument :
 ECD_O
 ClientSampleId :
 PB148145BL



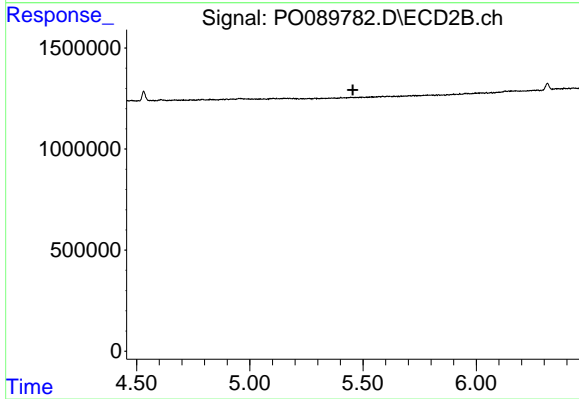
#25 AR-1248-5

R.T.: 0.000 min
 Exp R.T. : 5.496 min
 Response: 0
 Conc: N.D.



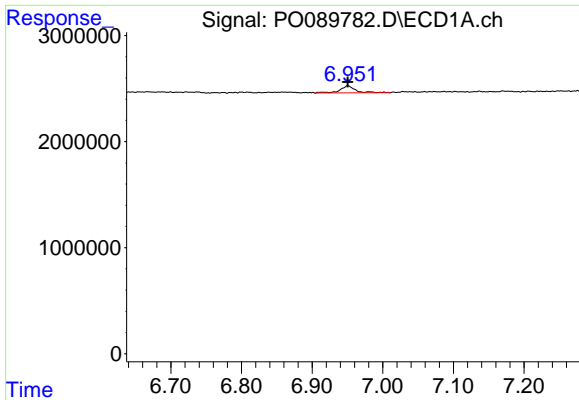
#26 AR-1254-1

R.T.: 6.385 min
 Delta R.T.: 0.021 min
 Response: 355321
 Conc: 4.87 ng/ml



#26 AR-1254-1

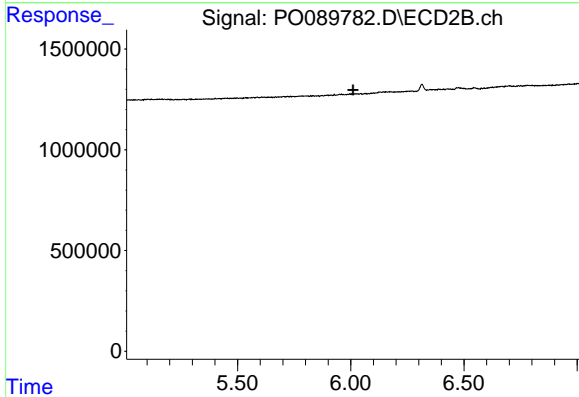
R.T.: 0.000 min
 Exp R.T. : 5.456 min
 Response: 0
 Conc: N.D.



#28 AR-1254-3

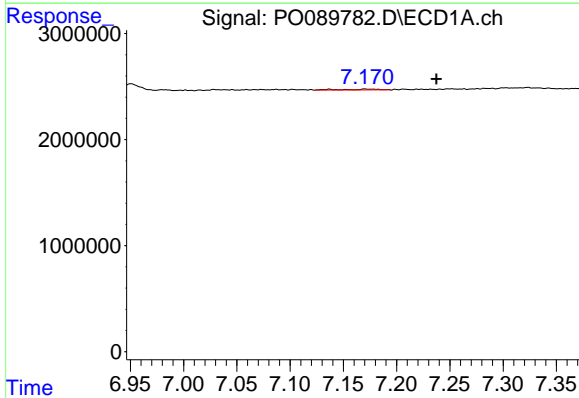
R.T.: 6.951 min
 Delta R.T.: 0.000 min
 Response: 1007173
 Conc: 9.24 ng/ml

Instrument :
 ECD_O
 ClientSampleId :
 PB148145BL



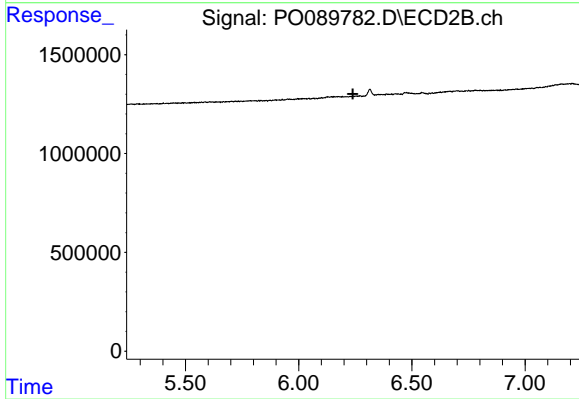
#28 AR-1254-3

R.T.: 0.000 min
 Exp R.T. : 6.010 min
 Response: 0
 Conc: N.D.



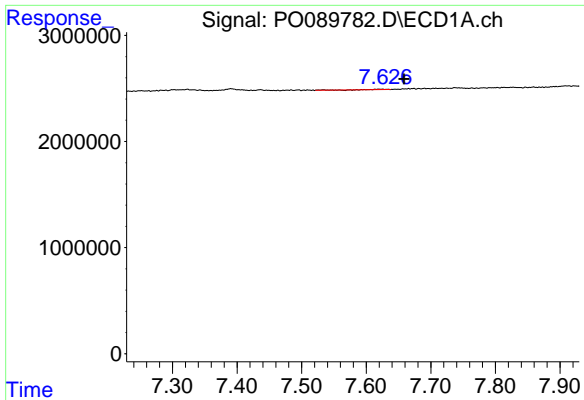
#29 AR-1254-4

R.T.: 7.172 min
 Delta R.T.: -0.065 min
 Response: 181264
 Conc: 2.44 ng/ml



#29 AR-1254-4

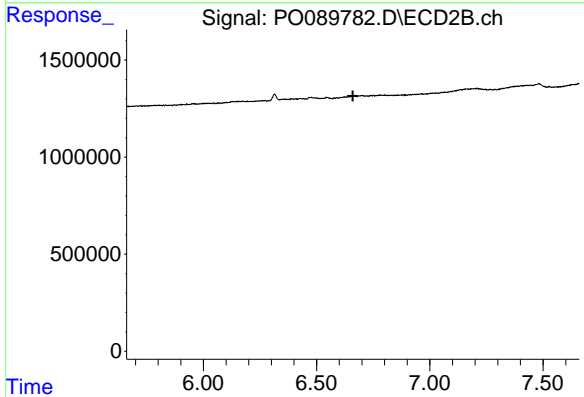
R.T.: 0.000 min
 Exp R.T. : 6.239 min
 Response: 0
 Conc: N.D.



#30 AR-1254-5

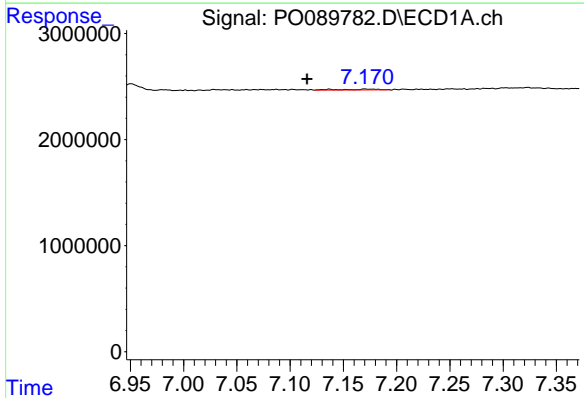
R.T.: 7.620 min
 Delta R.T.: -0.038 min
 Response: 77216
 Conc: 1.02 ng/ml

Instrument :
 ECD_O
 ClientSampleId :
 PB148145BL



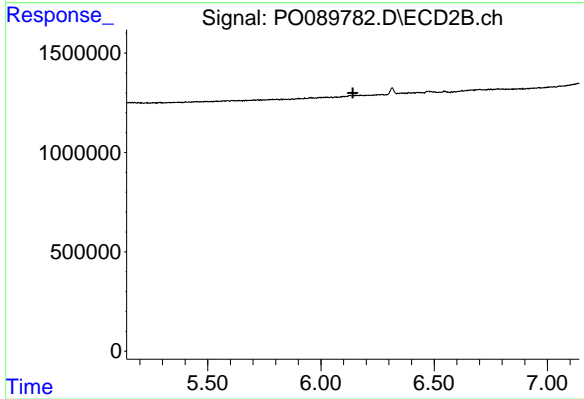
#30 AR-1254-5

R.T.: 0.000 min
 Exp R.T. : 6.660 min
 Response: 0
 Conc: N.D.



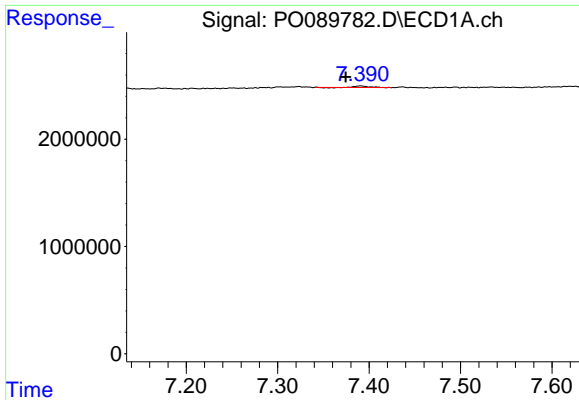
#31 AR-1260-1

R.T.: 7.172 min
 Delta R.T.: 0.056 min
 Response: 181264
 Conc: 2.31 ng/ml



#31 AR-1260-1

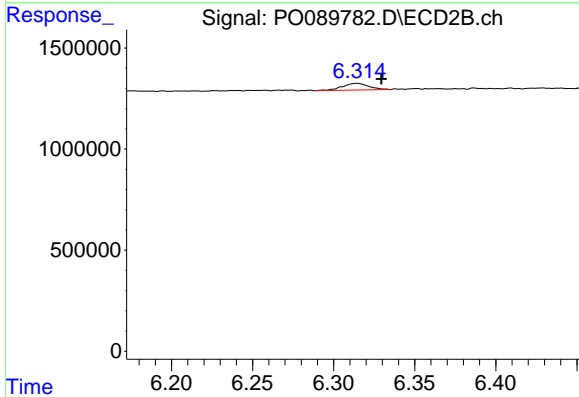
R.T.: 0.000 min
 Exp R.T. : 6.141 min
 Response: 0
 Conc: N.D.



#32 AR-1260-2

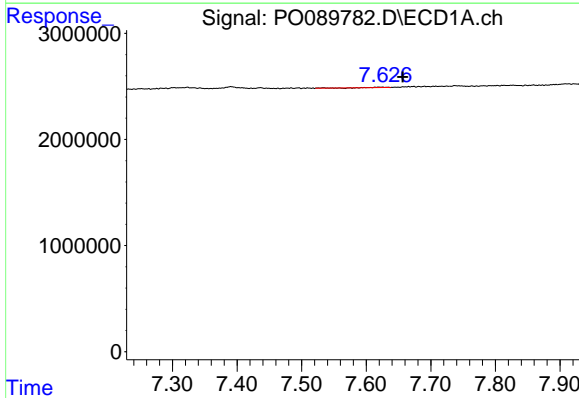
R.T.: 7.391 min
 Delta R.T.: 0.016 min
 Response: 120616
 Conc: 1.40 ng/ml

Instrument :
 ECD_O
 ClientSampleId :
 PB148145BL



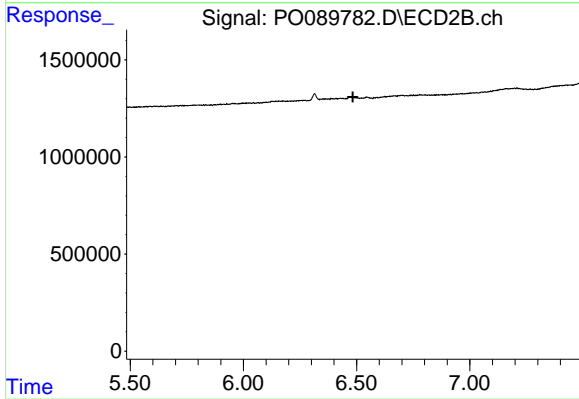
#32 AR-1260-2

R.T.: 6.315 min
 Delta R.T.: -0.015 min
 Response: 379699
 Conc: 6.47 ng/ml



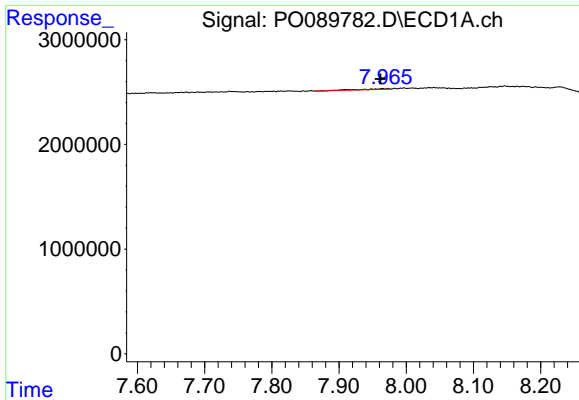
#33 AR-1260-3

R.T.: 7.620 min
 Delta R.T.: -0.037 min
 Response: 77216
 Conc: 0.83 ng/ml



#33 AR-1260-3

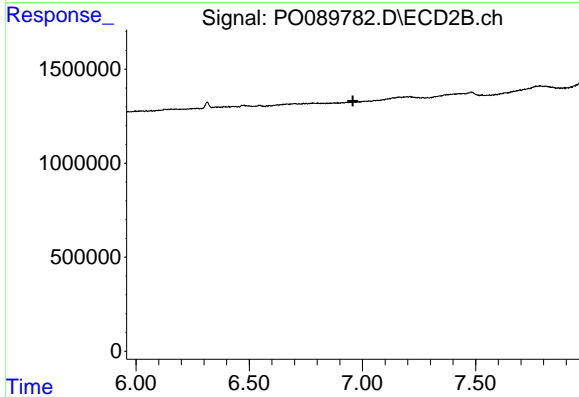
R.T.: 0.000 min
 Exp R.T.: 6.484 min
 Response: 0
 Conc: N.D.



#34 AR-1260-4

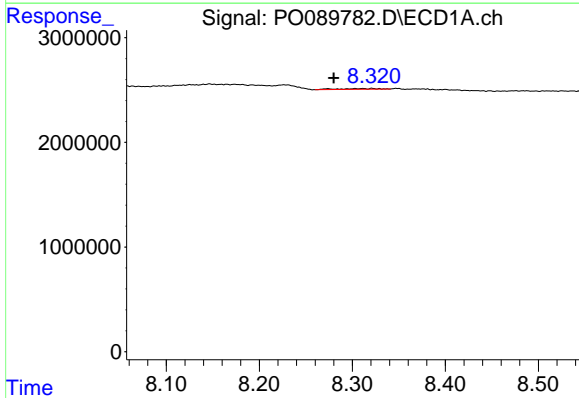
R.T.: 7.965 min
 Delta R.T.: 0.003 min
 Response: 236045
 Conc: 3.61 ng/ml

Instrument :
 ECD_O
 ClientSampleId :
 PB148145BL



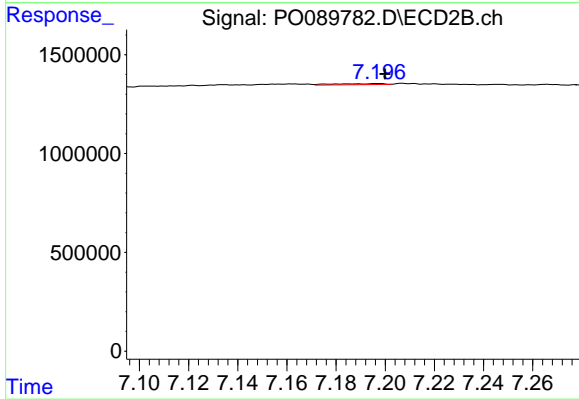
#34 AR-1260-4

R.T.: 0.000 min
 Exp R.T. : 6.958 min
 Response: 0
 Conc: N.D.



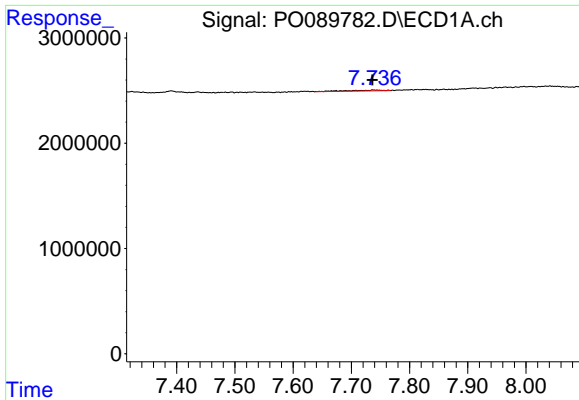
#35 AR-1260-5

R.T.: 8.322 min
 Delta R.T.: 0.042 min
 Response: 192884
 Conc: 1.59 ng/ml



#35 AR-1260-5

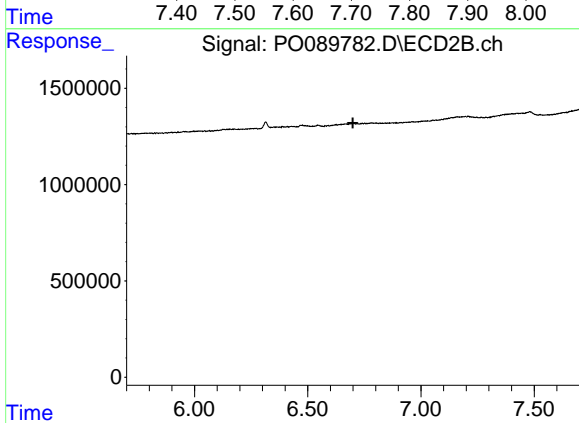
R.T.: 7.197 min
 Delta R.T.: -0.002 min
 Response: 81987
 Conc: 0.80 ng/ml



#36 AR-1262-1

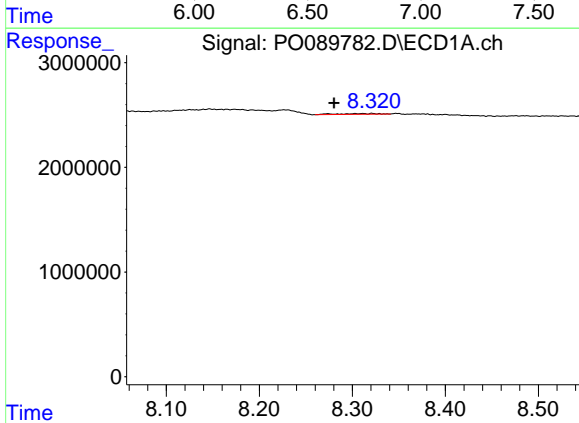
R.T.: 7.739 min
 Delta R.T.: 0.002 min
 Response: 313425
 Conc: 3.50 ng/ml

Instrument :
 ECD_O
 ClientSampleId :
 PB148145BL



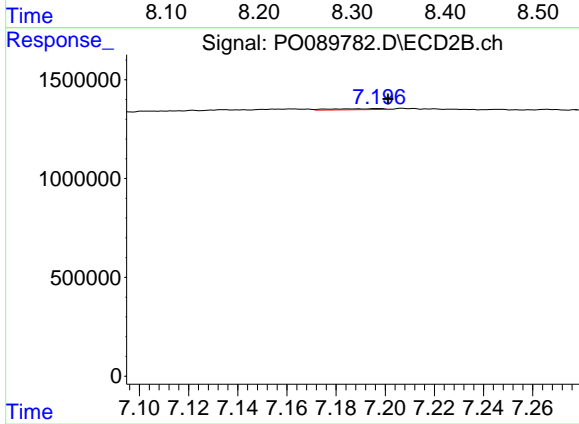
#36 AR-1262-1

R.T.: 0.000 min
 Exp R.T. : 6.699 min
 Response: 0
 Conc: N.D.



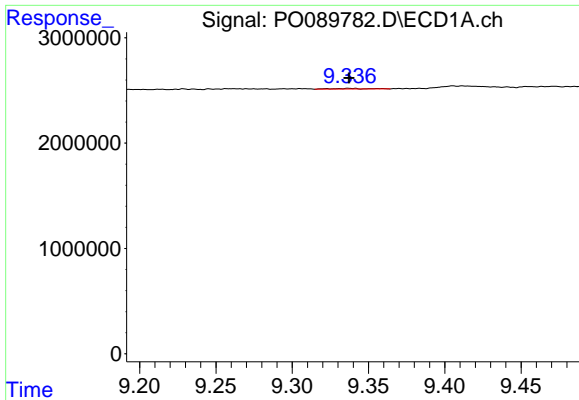
#37 AR-1262-2

R.T.: 8.322 min
 Delta R.T.: 0.041 min
 Response: 192884
 Conc: 1.36 ng/ml



#37 AR-1262-2

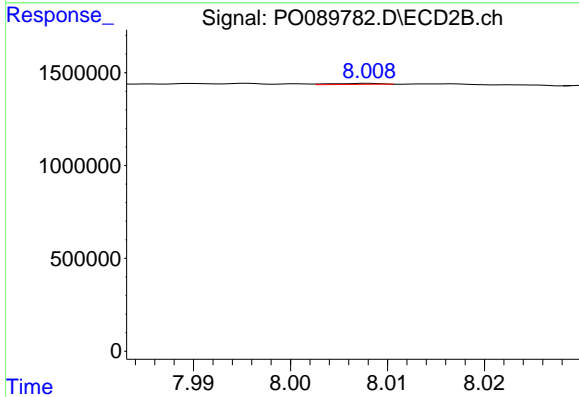
R.T.: 7.197 min
 Delta R.T.: -0.004 min
 Response: 81987
 Conc: 0.72 ng/ml



#40 AR-1262-5

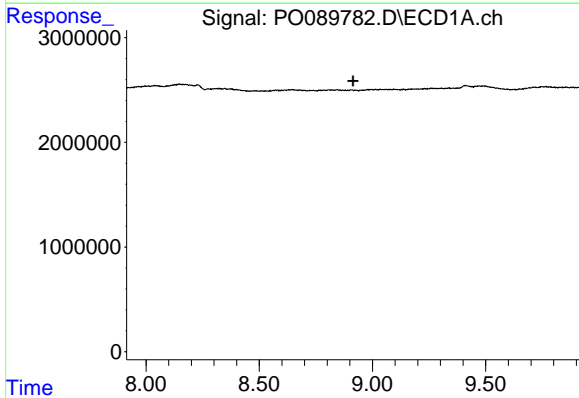
R.T.: 9.338 min
 Delta R.T.: 0.000 min
 Response: 101661
 Conc: 1.98 ng/ml

Instrument :
 ECD_O
 ClientSampleId :
 PB148145BL



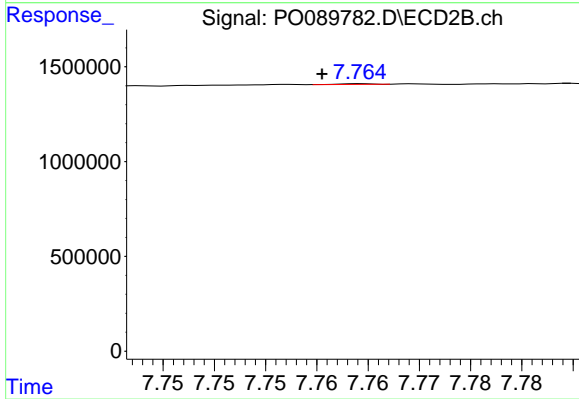
#40 AR-1262-5

R.T.: 8.008 min
 Delta R.T.: -0.037 min
 Response: 28541
 Conc: 0.78 ng/ml



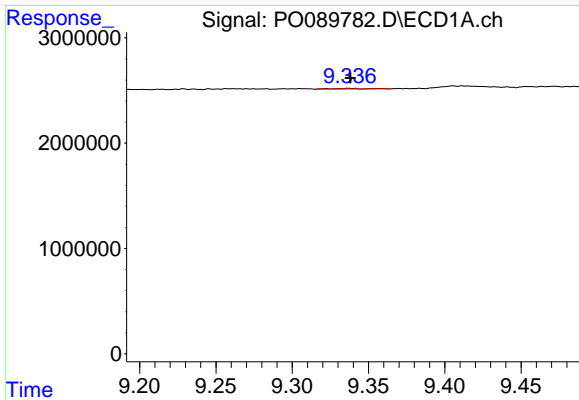
#43 AR-1268-3

R.T.: 0.000 min
 Exp R.T. : 8.914 min
 Response: 0
 Conc: N.D.



#43 AR-1268-3

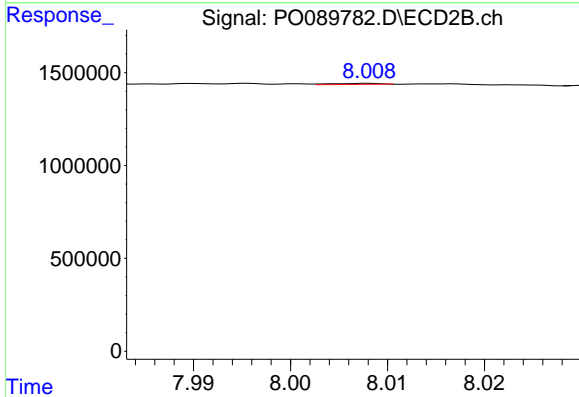
R.T.: 7.764 min
 Delta R.T.: 0.004 min
 Response: 9864
 Conc: 0.10 ng/ml



#44 AR-1268-4

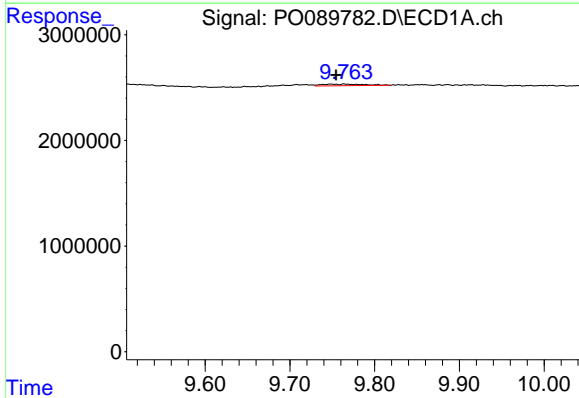
R.T.: 9.338 min
 Delta R.T.: 0.000 min
 Response: 101661
 Conc: 1.81 ng/ml

Instrument :
 ECD_O
 ClientSampleId :
 PB148145BL



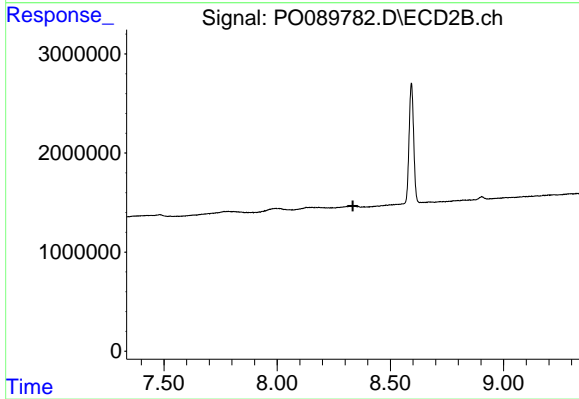
#44 AR-1268-4

R.T.: 8.008 min
 Delta R.T.: -0.037 min
 Response: 28541
 Conc: 0.72 ng/ml



#45 AR-1268-5

R.T.: 9.765 min
 Delta R.T.: 0.011 min
 Response: 502595
 Conc: 1.31 ng/ml



#45 AR-1268-5

R.T.: 0.000 min
 Exp R.T.: 8.334 min
 Response: 0
 Conc: N.D.