

Data Path : Z:\pestpcbsrv\HPCHEM1\ECD_0\Data\PO100721\
 Data File : PO081849.D
 Signal(s) : Signal #1: ECD1A.CH Signal #2: ECD2B.CH
 Acq On : 07 Oct 2021 10:20
 Operator : AJ\MA
 Sample : AR1254CCC500
 Misc :
 ALS Vial : 6 Sample Multiplier: 1

Instrument :
 ECD_0
 ClientSampleId :
 AR1254CCC500

Integration File signal 1: autoint1.e
 Integration File signal 2: autoint2.e
 Quant Time: Oct 07 23:08:42 2021
 Quant Method : Z:\pestpcbsrv\HPCHEM1\ECD_0\methods\PO100621.M
 Quant Title : GC EXTRACTABLES
 QLast Update : Thu Oct 07 09:43:36 2021
 Response via : Initial Calibration
 Integrator: ChemStation 6890 Scale Mode: Small noise peaks clipped

Volume Inj. : 2 µl
 Signal #1 Phase : ZB-MR1 Signal #2 Phase: ZB-MR2
 Signal #1 Info : 30Mx0.32mmx 0.50µ Signal #2 Info : 30M x 0.32mm x 0.25µm

Compound	RT#1	RT#2	Resp#1	Resp#2	ng/ml	ng/ml

System Monitoring Compounds						
1) SA Tetrachlo...	4.990	3.980	4188661	1332053	50.477	52.641
2) SA Decachlor...	11.111	9.313	3091374	1276603	52.118	54.040
Target Compounds						
26) L6 AR-1254-1	7.239	6.119	1372503	717361	501.706	499.878
27) L6 AR-1254-2	7.471	6.280	2041978	644760	500.500	497.290
28) L6 AR-1254-3	7.855	6.701	2043007	999002	500.705	501.581
29) L6 AR-1254-4	8.152	6.942	1530019	650676	510.161	509.443
30) L6 AR-1254-5	8.584	7.373	1672775	938897	512.361	518.848

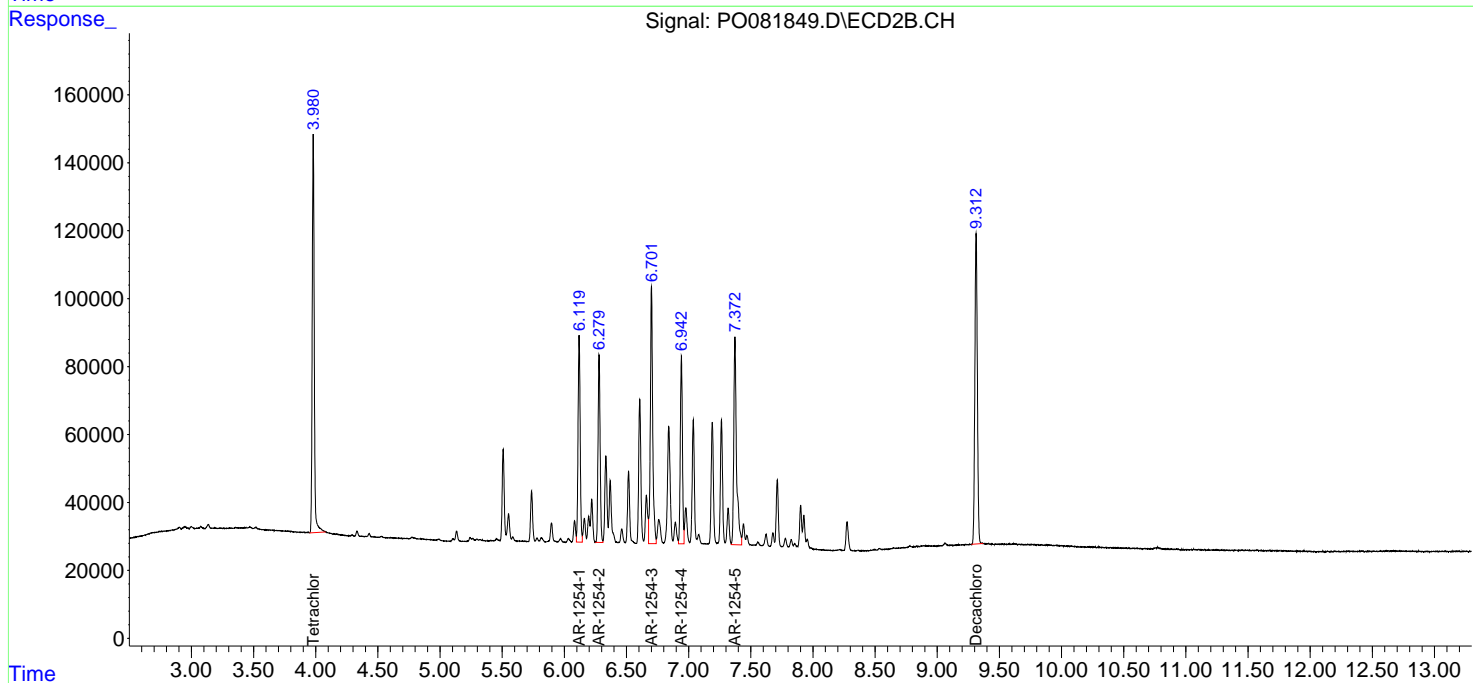
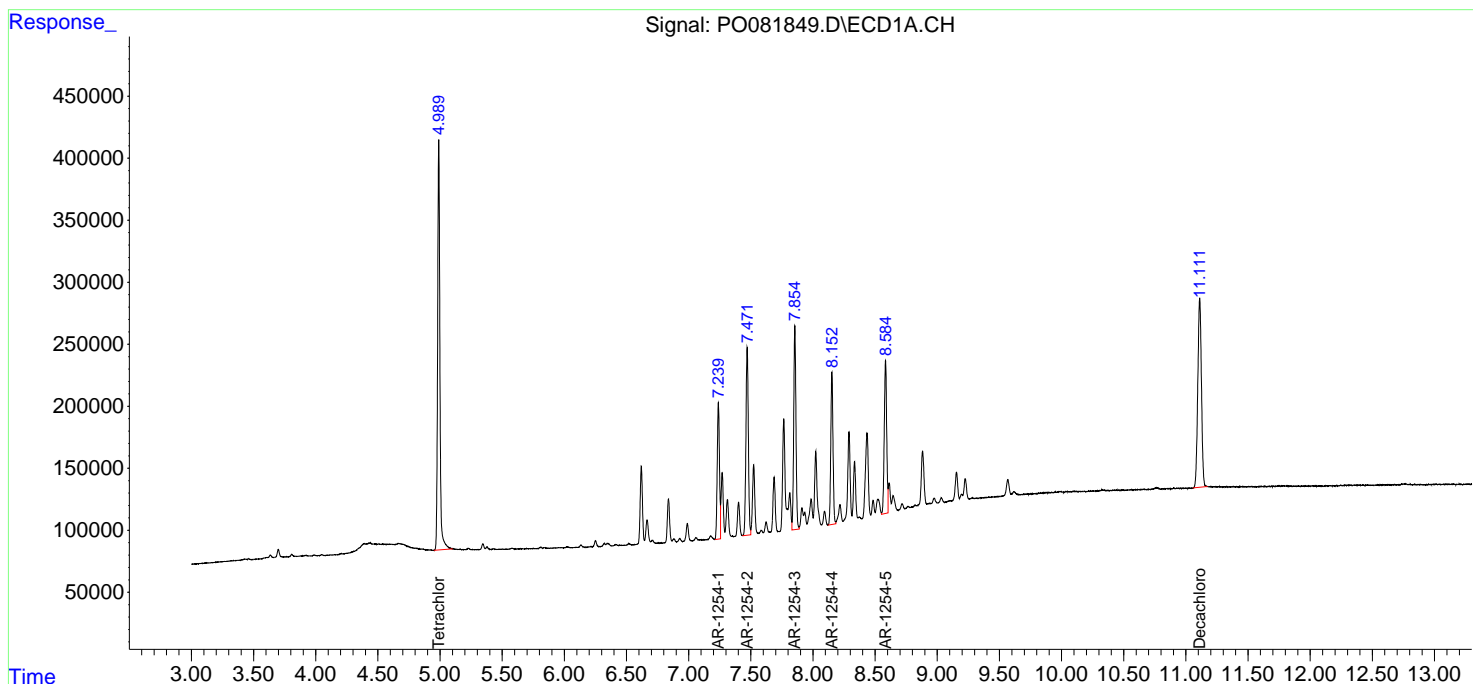
(f)=RT Delta > 1/2 Window (#)=Amounts differ by > 25% (m)=manual int.

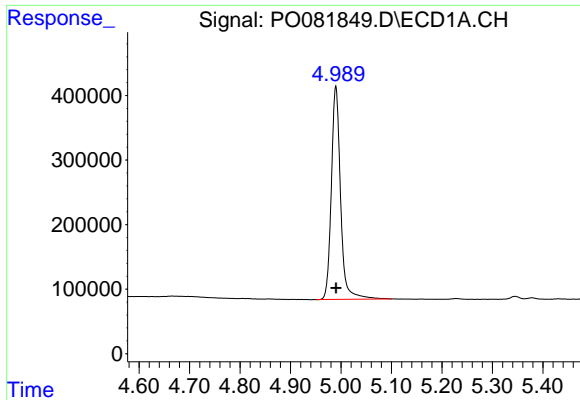
Data Path : Z:\pestpcbsrv\HPCHEM1\ECD_0\Data\PO100721\
 Data File : PO081849.D
 Signal(s) : Signal #1: ECD1A.CH Signal #2: ECD2B.CH
 Acq On : 07 Oct 2021 10:20
 Operator : AJ\MA
 Sample : AR1254CCC500
 Misc :
 ALS Vial : 6 Sample Multiplier: 1

Instrument :
 ECD_O
 Client Sampled :
 AR1254CCC500

Integration File signal 1: autoint1.e
 Integration File signal 2: autoint2.e
 Quant Time: Oct 07 23:08:42 2021
 Quant Method : Z:\pestpcbsrv\HPCHEM1\ECD_0\methods\PO100621.M
 Quant Title : GC EXTRACTABLES
 QLast Update : Thu Oct 07 09:43:36 2021
 Response via : Initial Calibration
 Integrator: ChemStation 6890 Scale Mode: Small noise peaks clipped

Volume Inj. : 2 µl
 Signal #1 Phase : ZB-MR1 Signal #2 Phase: ZB-MR2
 Signal #1 Info : 30Mx0.32mmx 0.50µ Signal #2 Info : 30M x 0.32mm x 0.25µm

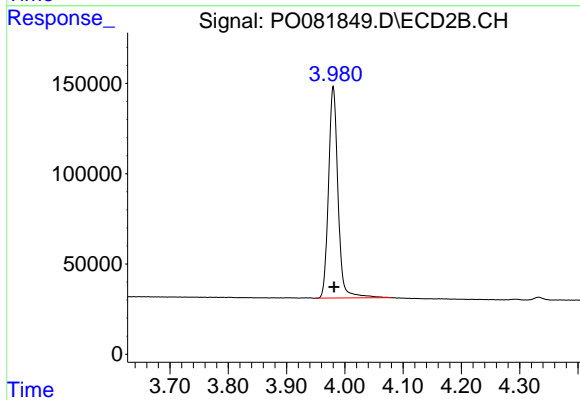




#1 Tetrachloro-m-xylene

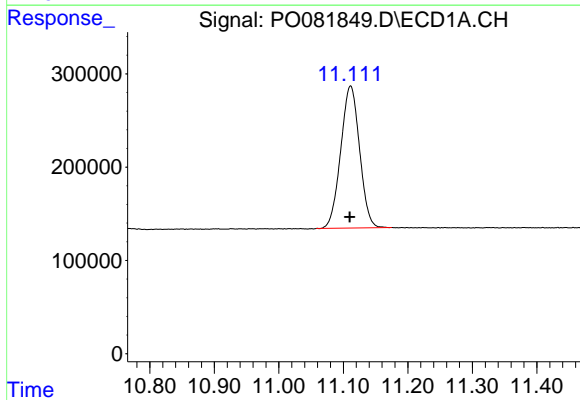
R.T.: 4.990 min
 Delta R.T.: 0.000 min
 Response: 4188661
 Conc: 50.48 ng/ml

Instrument :
 ECD_O
 ClientSampleId :
 AR1254CCC500



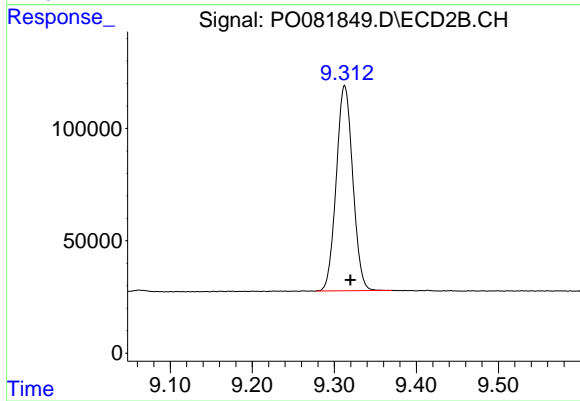
#1 Tetrachloro-m-xylene

R.T.: 3.980 min
 Delta R.T.: -0.001 min
 Response: 1332053
 Conc: 52.64 ng/ml



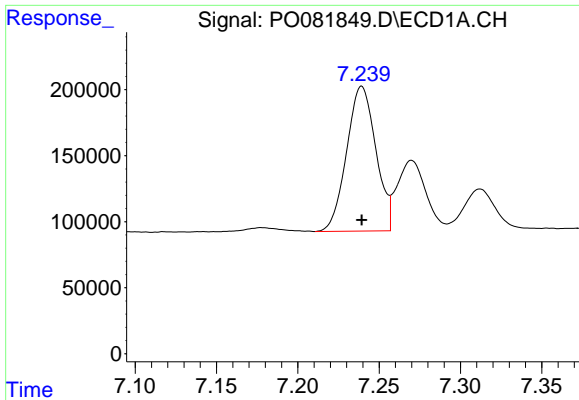
#2 Decachlorobiphenyl

R.T.: 11.111 min
 Delta R.T.: 0.001 min
 Response: 3091374
 Conc: 52.12 ng/ml



#2 Decachlorobiphenyl

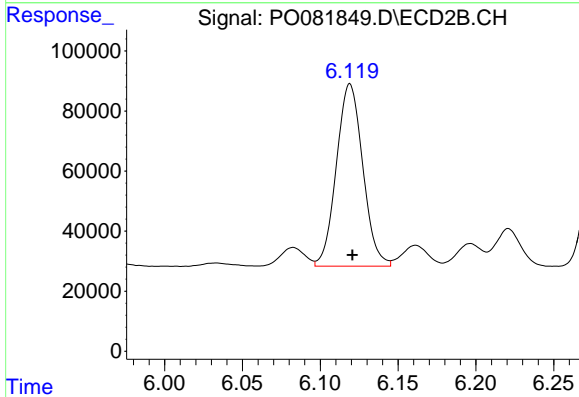
R.T.: 9.313 min
 Delta R.T.: -0.007 min
 Response: 1276603
 Conc: 54.04 ng/ml



#26 AR-1254-1

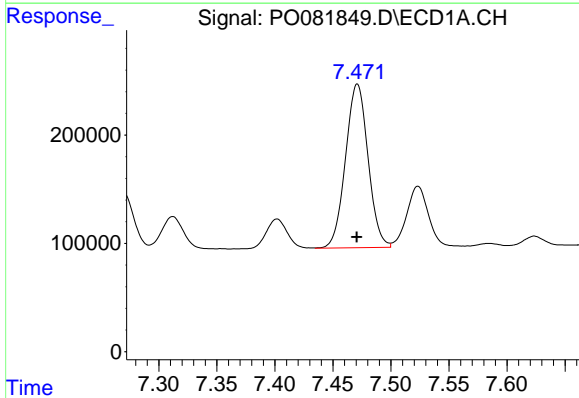
R.T.: 7.239 min
 Delta R.T.: 0.000 min
 Response: 1372503
 Conc: 501.71 ng/ml

Instrument :
 ECD_O
 ClientSampleId :
 AR1254CCC500



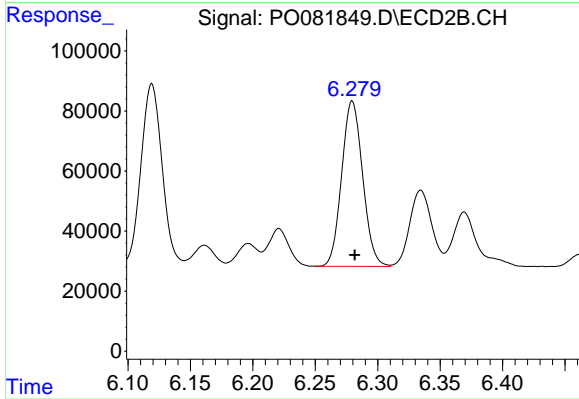
#26 AR-1254-1

R.T.: 6.119 min
 Delta R.T.: -0.002 min
 Response: 717361
 Conc: 499.88 ng/ml



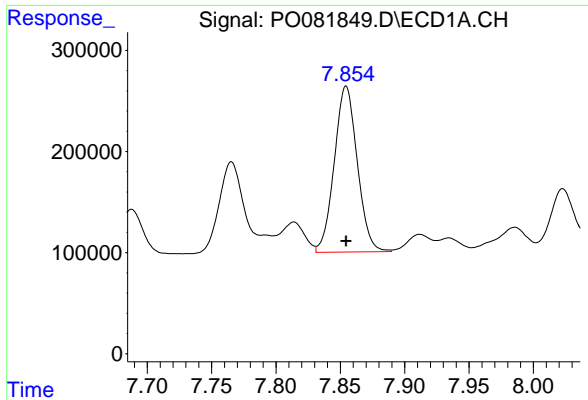
#27 AR-1254-2

R.T.: 7.471 min
 Delta R.T.: 0.000 min
 Response: 2041978
 Conc: 500.50 ng/ml



#27 AR-1254-2

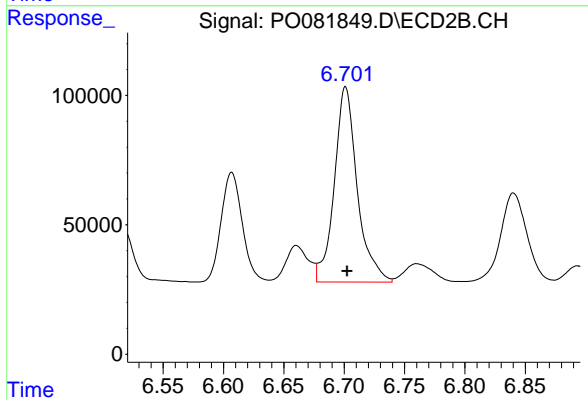
R.T.: 6.280 min
 Delta R.T.: -0.002 min
 Response: 644760
 Conc: 497.29 ng/ml



#28 AR-1254-3

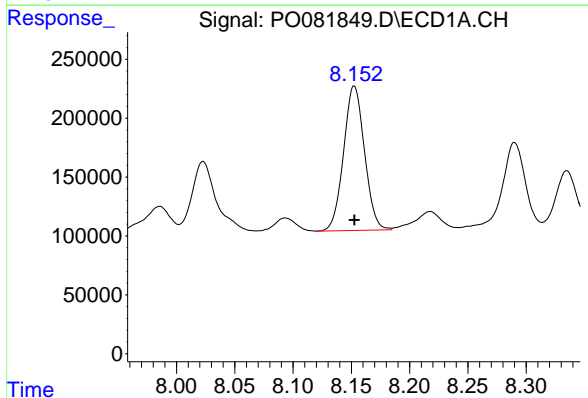
R.T.: 7.855 min
 Delta R.T.: 0.000 min
 Response: 2043007
 Conc: 500.70 ng/ml

Instrument :
 ECD_O
 ClientSampleId :
 AR1254CCC500



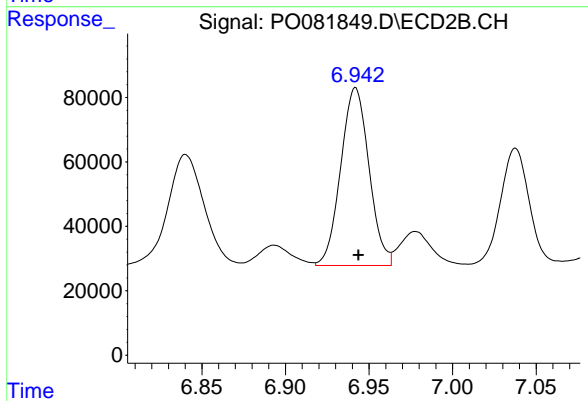
#28 AR-1254-3

R.T.: 6.701 min
 Delta R.T.: -0.001 min
 Response: 999002
 Conc: 501.58 ng/ml



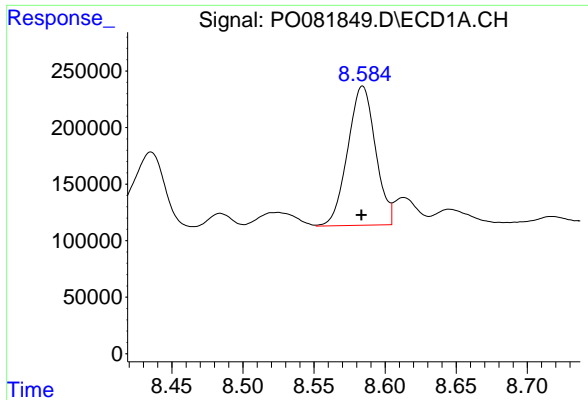
#29 AR-1254-4

R.T.: 8.152 min
 Delta R.T.: 0.000 min
 Response: 1530019
 Conc: 510.16 ng/ml



#29 AR-1254-4

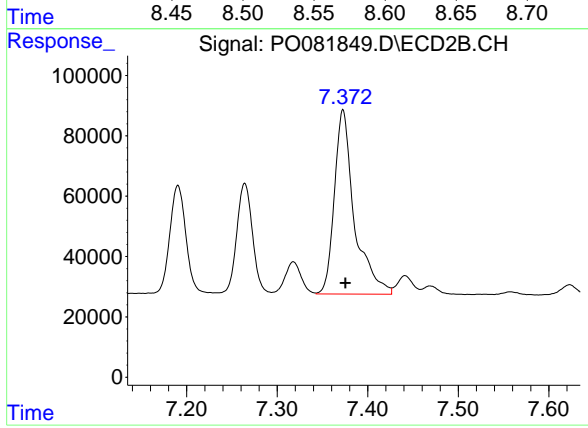
R.T.: 6.942 min
 Delta R.T.: -0.002 min
 Response: 650676
 Conc: 509.44 ng/ml



#30 AR-1254-5

R.T.: 8.584 min
Delta R.T.: 0.000 min
Response: 1672775
Conc: 512.36 ng/ml

Instrument :
ECD_O
ClientSampleId :
AR1254CCC500



#30 AR-1254-5

R.T.: 7.373 min
Delta R.T.: -0.003 min
Response: 938897
Conc: 518.85 ng/ml