

Data Path : Z:\pestpcbsrv\HPCHEM1\ECD_0\Data\PO100721\
 Data File : PO081910.D
 Signal(s) : Signal #1: ECD1A.CH Signal #2: ECD2B.CH
 Acq On : 08 Oct 2021 10:01
 Operator : AJ\MA
 Sample : M4099-01RE
 Misc :
 ALS Vial : 10 Sample Multiplier: 1

Instrument :
 ECD_0
ClientSampleId :
 PCB-092821-SR-01

Manual Integrations
APPROVED
 mohammad
 10/12/2021 8:36:36 AM

Integration File signal 1: autoint1.e
 Integration File signal 2: autoint2.e
 Quant Time: Oct 08 16:25:50 2021
 Quant Method : Z:\pestpcbsrv\HPCHEM1\ECD_0\methods\PO100621.M
 Quant Title : GC EXTRACTABLES
 QLast Update : Thu Oct 07 09:43:36 2021
 Response via : Initial Calibration
 Integrator: ChemStation 6890 Scale Mode: Small noise peaks clipped

Volume Inj. : 2 µl
 Signal #1 Phase : ZB-MR1 Signal #2 Phase: ZB-MR2
 Signal #1 Info : 30Mx0.32mmx 0.50µ Signal #2 Info : 30M x 0.32mm x 0.25µm

Compound	RT#1	RT#2	Resp#1	Resp#2	ng/ml	ng/ml

System Monitoring Compounds						
1) SA Tetrachlo...	4.989	3.985	938310	745432	11.307	29.459 #
2) SA Decachlor...	11.117	9.303f	4878925	543460	82.255m	23.005m#

Target Compounds

 (f)=RT Delta > 1/2 Window (#)=Amounts differ by > 25% (m)=manual int.

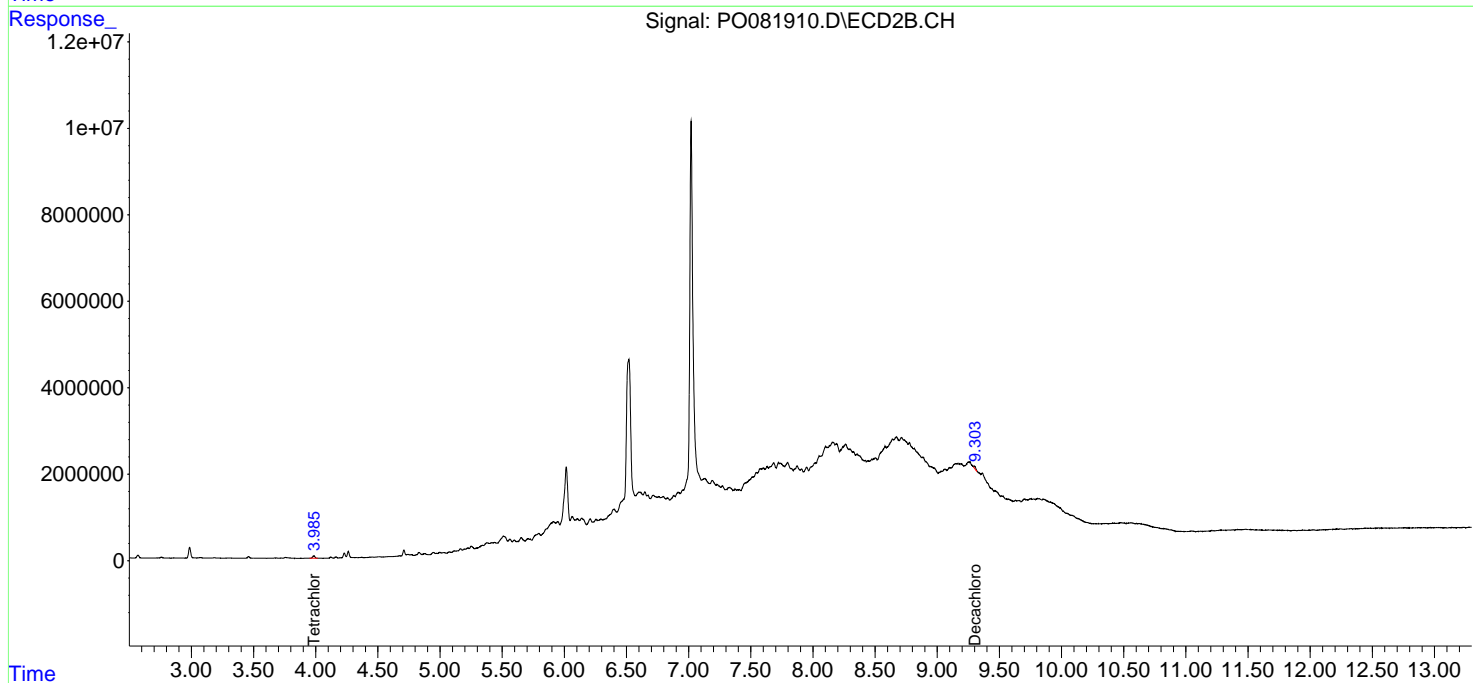
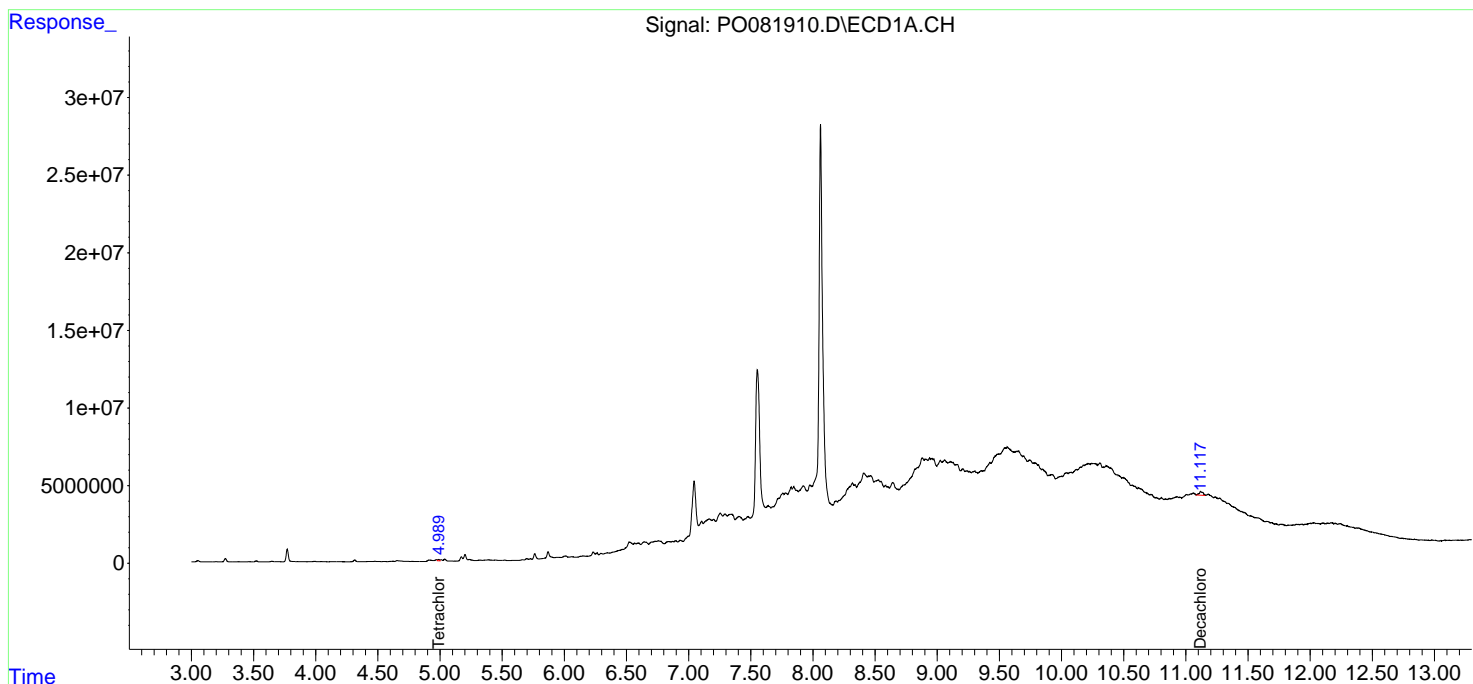
Data Path : Z:\pestpcbsrv\HPCHEM1\ECD_0\Data\PO100721\
Data File : PO081910.D
Signal(s) : Signal #1: ECD1A.CH Signal #2: ECD2B.CH
Acq On : 08 Oct 2021 10:01
Operator : AJ\MA
Sample : M4099-01RE
Misc :
ALS Vial : 10 Sample Multiplier: 1

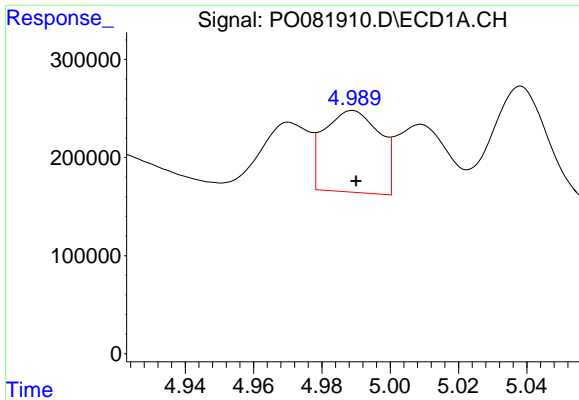
Instrument :
ECD_O
ClientSampleId :
PCB-092821-SR-01

Manual Integrations
APPROVED
mohammad
10/12/2021 8:36:36 AM

Integration File signal 1: autoint1.e
Integration File signal 2: autoint2.e
Quant Time: Oct 08 16:25:50 2021
Quant Method : Z:\pestpcbsrv\HPCHEM1\ECD_0\methods\PO100621.M
Quant Title : GC EXTRACTABLES
QLast Update : Thu Oct 07 09:43:36 2021
Response via : Initial Calibration
Integrator: ChemStation 6890 Scale Mode: Small noise peaks clipped

Volume Inj. : 2 µl
Signal #1 Phase : ZB-MR1 Signal #2 Phase: ZB-MR2
Signal #1 Info : 30Mx0.32mmx 0.50µ Signal #2 Info : 30M x 0.32mm x 0.25µm

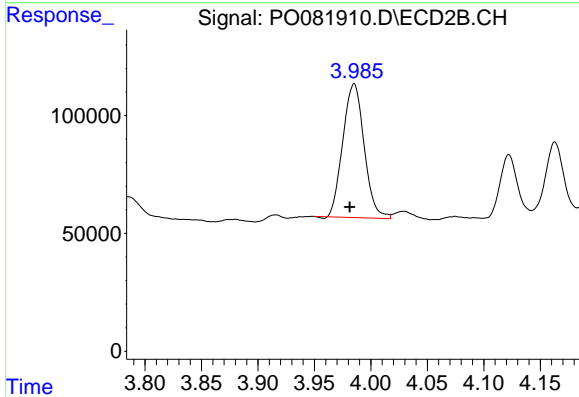




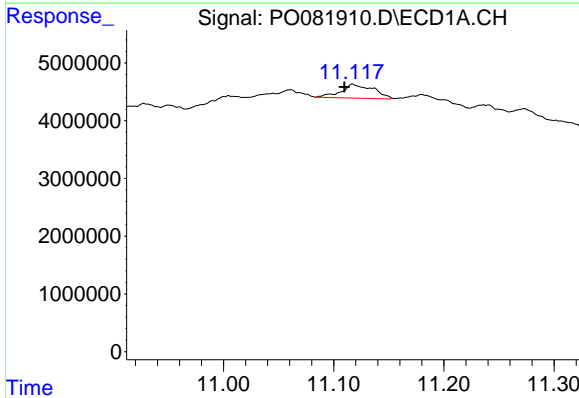
#1 Tetrachloro-m-xylene
 R.T.: 4.989 min
 Delta R.T.: 0.000 min
 Response: 938310
 Conc: 11.31 ng/ml

Instrument :
 ECD_O
 ClientSampleId :
 PCB-092821-SR-01

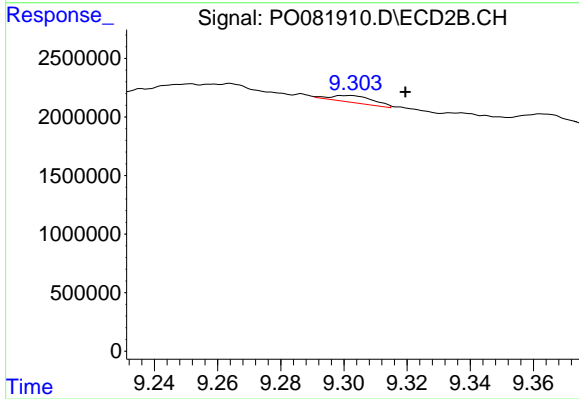
Manual Integrations
 APPROVED
 mohammad
 10/12/2021 8:36:36 AM



#1 Tetrachloro-m-xylene
 R.T.: 3.985 min
 Delta R.T.: 0.004 min
 Response: 745432
 Conc: 29.46 ng/ml



#2 Decachlorobiphenyl
 R.T.: 11.117 min
 Delta R.T.: 0.007 min
 Response: 4878925
 Conc: 82.26 ng/ml m



#2 Decachlorobiphenyl
 R.T.: 9.303 min
 Delta R.T.: -0.017 min
 Response: 543460
 Conc: 23.01 ng/ml m