

Data Path : Z:\pestpcbsrv\HPCHEM1\ECD\_O\Data\PO100820\  
 Data File : P0072122.D  
 Signal(s) : Signal #1: ECD1A.CH Signal #2: ECD2B.CH  
 Acq On : 08 Oct 2020 17:05  
 Operator : DD\AJ  
 Sample : L4297-01  
 Misc :  
 ALS Vial : 16 Sample Multiplier: 1

Instrument :  
 ECD\_O  
 ClientSampleId :  
 RO-RBR-200031

Integration File signal 1: autoint1.e  
 Integration File signal 2: autoint2.e  
 Quant Time: Oct 09 04:24:40 2020  
 Quant Method : Z:\pestpcbsrv\HPCHEM1\ECD\_O\methods\PO100320.M  
 Quant Title : GC EXTRACTABLES  
 QLast Update : Mon Oct 05 11:48:20 2020  
 Response via : Initial Calibration  
 Integrator: ChemStation 6890 Scale Mode: Small noise peaks clipped

Volume Inj. : 2 µl  
 Signal #1 Phase : ZB-MR1 Signal #2 Phase: ZB-MR2  
 Signal #1 Info : 30Mx0.32mmx 0.50µ Signal #2 Info : 30M x 0.32mm x 0.25µm

Compound	RT#1	RT#2	Resp#1	Resp#2	ng/ml	ng/ml
-----						
System Monitoring Compounds						
1) SA Tetrachlo...	4.325	3.509	1327921	688124	18.488	18.371
2) SA Decachlor...	9.931	8.682	786107	362074	7.139	6.366
Target Compounds						
7) L1 AR-1016-5	0.000	5.217	0	4013	N.D.	3.167 #
15) L3 AR-1232-5	0.000	5.217	0	4013	N.D.	8.270 #
24) L5 AR-1248-4	0.000	5.217	0	4013	N.D.	2.837 #
28) L6 AR-1254-3	0.000	6.176f	0	31223	N.D.	9.196 #
29) L6 AR-1254-4	0.000	6.391	0	15643	N.D.	6.442 #
30) L6 AR-1254-5	7.861f	6.821	2586	1580422	0.481	482.998 #
31) L7 AR-1260-1	0.000	6.277f	0	499	N.D.	0.195 #
32) L7 AR-1260-2	7.566	6.506	539066	11547	71.970	3.610 #
34) L7 AR-1260-4	0.000	7.139f	0	25884	N.D.	9.783 #
35) L7 AR-1260-5	8.447	7.370	372630	1442240	26.891	217.077 #
36) L8 AR-1262-1	0.000	6.821	0	1580422	N.D.	892.378 #
37) L8 AR-1262-2	8.447	7.370	372630	1442240	26.753	229.328 #
38) L8 AR-1262-3	0.000	7.647	0	74319	N.D.	27.395 #
40) L8 AR-1262-5	0.000	8.235f	0	158222	N.D.	63.874 #
41) L9 AR-1268-1	0.000	7.647	0	74319	N.D.	9.669 #
42) L9 AR-1268-2	0.000	7.740f	0	373504	N.D.	53.496 #
44) L9 AR-1268-4	0.000	8.235f	0	158222	N.D.	56.952 #
45) L9 AR-1268-5	0.000	8.487	0	221322	N.D.	11.698 #

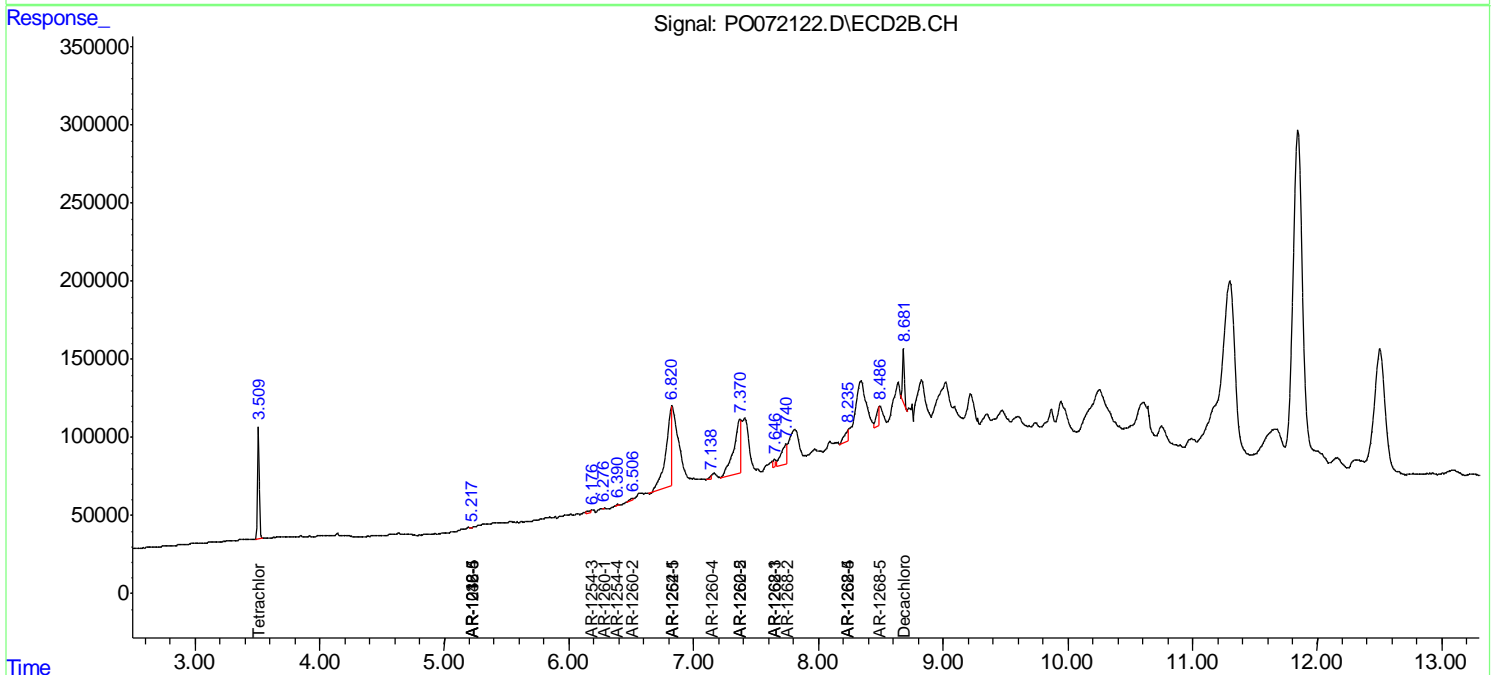
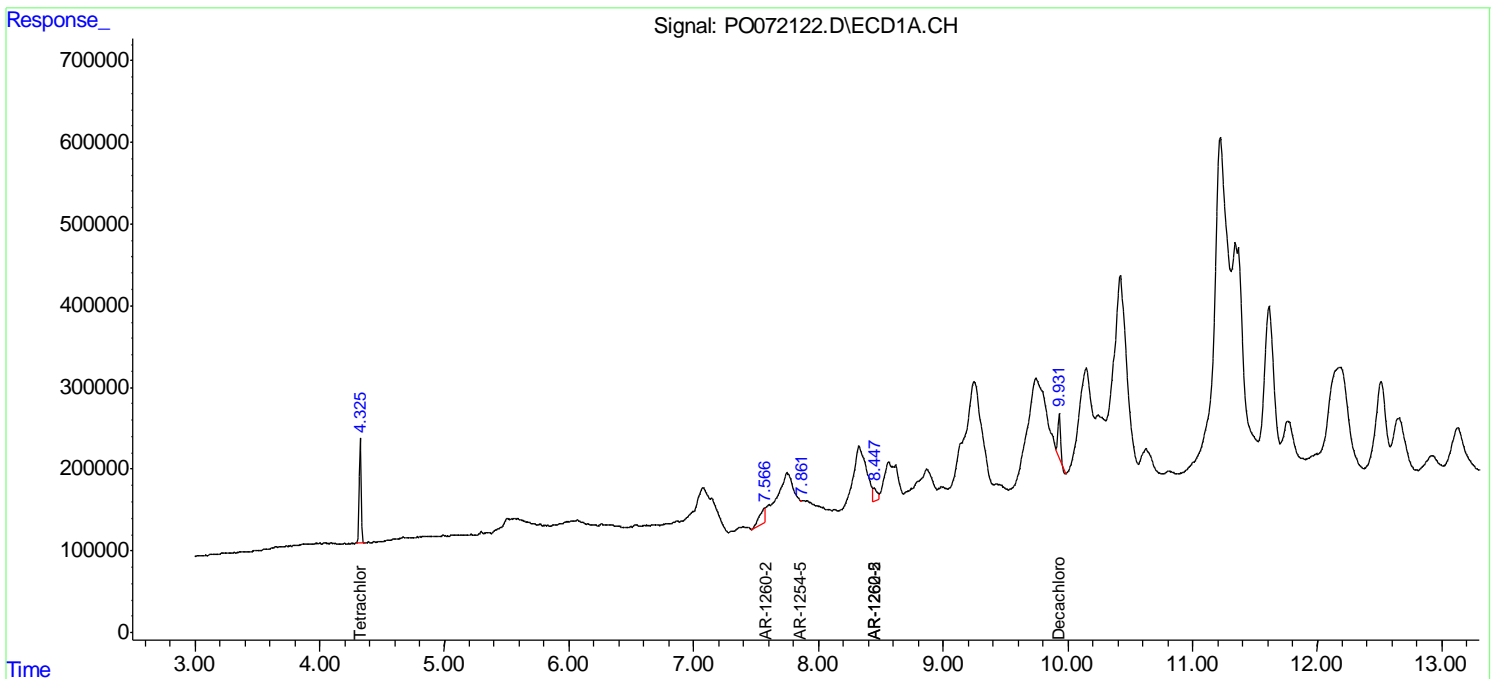
(f)=RT Delta > 1/2 Window (#)=Amounts differ by > 25% (m)=manual int.

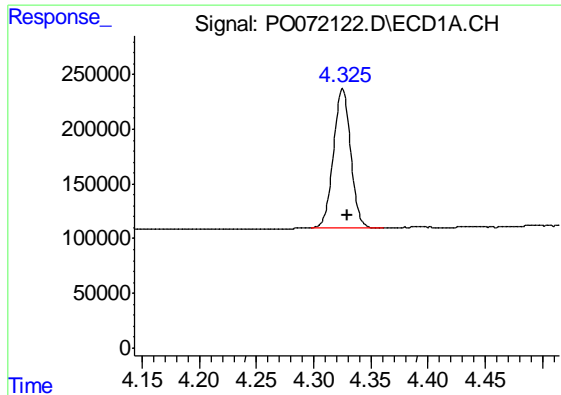
Data Path : Z:\pestpcbsrv\HPCHEM1\ECD\_O\Data\PO100820\  
 Data File : PO072122.D  
 Signal(s) : Signal #1: ECD1A.CH Signal #2: ECD2B.CH  
 Acq On : 08 Oct 2020 17:05  
 Operator : DD\AJ  
 Sample : L4297-01  
 Misc :  
 ALS Vial : 16 Sample Multiplier: 1

Instrument :  
 ECD\_O  
 ClientSampleId :  
 RO-RBR-200031

Integration File signal 1: autoint1.e  
 Integration File signal 2: autoint2.e  
 Quant Time: Oct 09 04:24:40 2020  
 Quant Method : Z:\pestpcbsrv\HPCHEM1\ECD\_O\methods\PO100320.M  
 Quant Title : GC EXTRACTABLES  
 QLast Update : Mon Oct 05 11:48:20 2020  
 Response via : Initial Calibration  
 Integrator: ChemStation 6890 Scale Mode: Small noise peaks clipped

Volume Inj. : 2 µl  
 Signal #1 Phase : ZB-MR1 Signal #2 Phase: ZB-MR2  
 Signal #1 Info : 30Mx0.32mmx 0.50µ Signal #2 Info : 30M x 0.32mm x 0.25µm

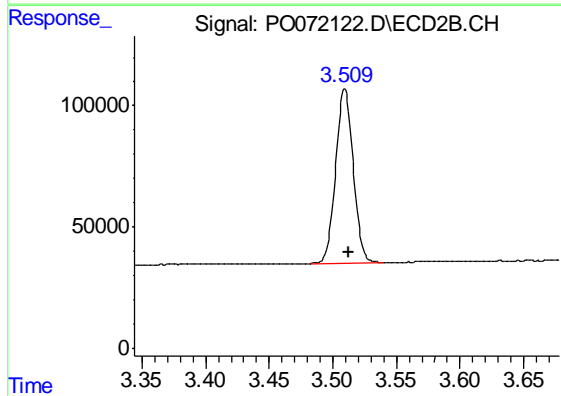




#1 Tetrachloro-m-xylene

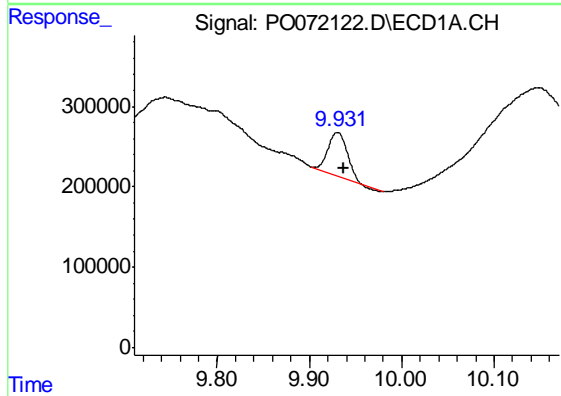
R.T.: 4.325 min  
Delta R.T.: -0.004 min  
Response: 1327921  
Conc: 18.49 ng/ml

Instrument :  
ECD\_O  
ClientSampleId :  
RO-RBR-200031



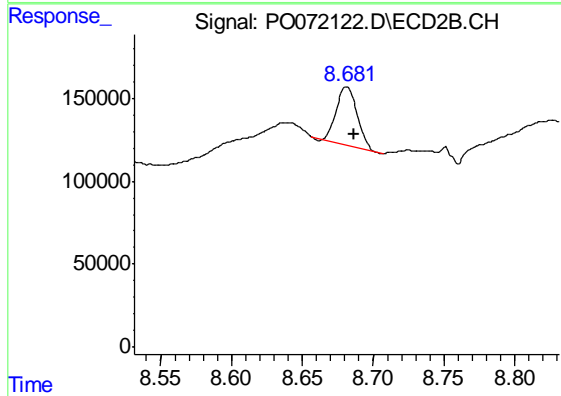
#1 Tetrachloro-m-xylene

R.T.: 3.509 min  
Delta R.T.: -0.003 min  
Response: 688124  
Conc: 18.37 ng/ml



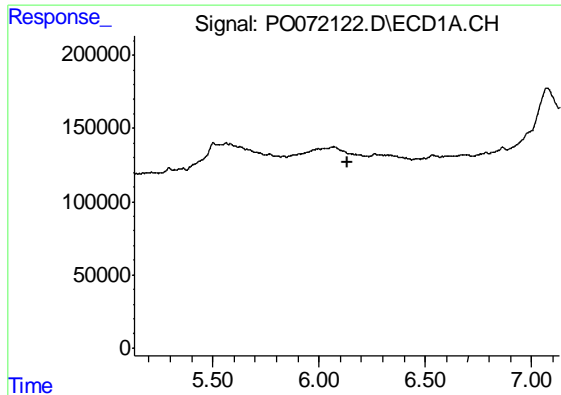
#2 Decachlorobiphenyl

R.T.: 9.931 min  
Delta R.T.: -0.006 min  
Response: 786107  
Conc: 7.14 ng/ml



#2 Decachlorobiphenyl

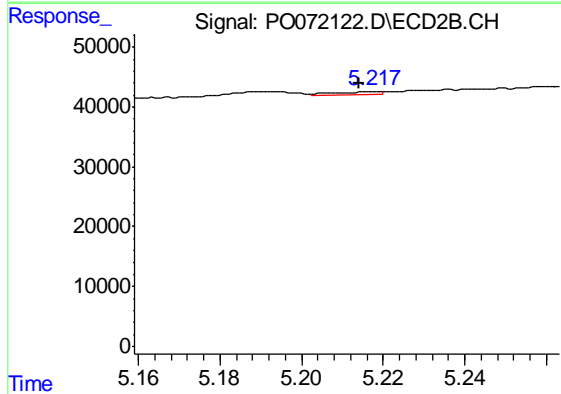
R.T.: 8.682 min  
Delta R.T.: -0.005 min  
Response: 362074  
Conc: 6.37 ng/ml



#7 AR-1016-5

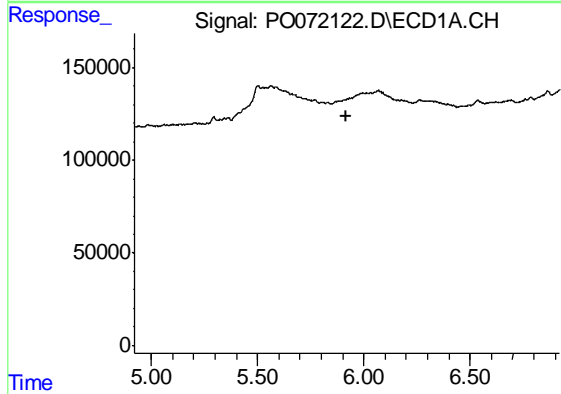
R.T.: 0.000 min  
 Exp R.T. : 6.131 min  
 Response: 0  
 Conc: N.D.

Instrument :  
 ECD\_O  
 ClientSampleId :  
 RO-RBR-200031



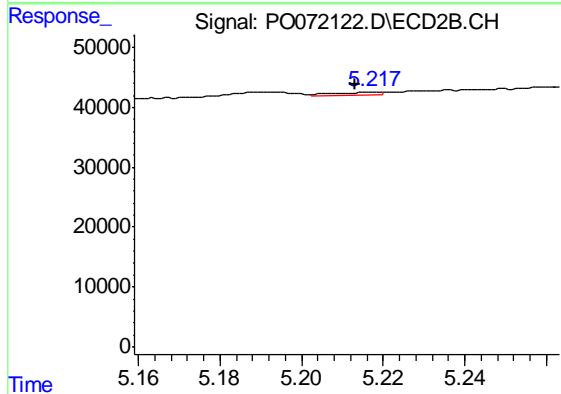
#7 AR-1016-5

R.T.: 5.217 min  
 Delta R.T.: 0.003 min  
 Response: 4013  
 Conc: 3.17 ng/ml



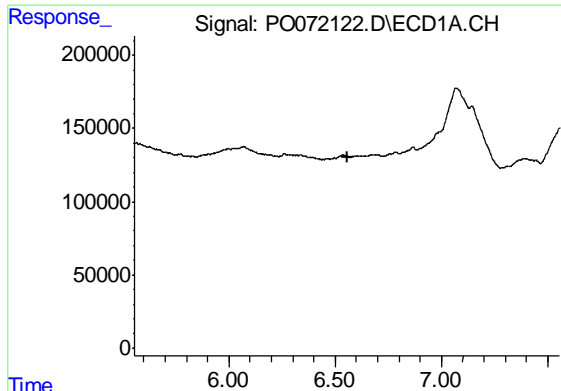
#15 AR-1232-5

R.T.: 0.000 min  
 Exp R.T. : 5.920 min  
 Response: 0  
 Conc: N.D.



#15 AR-1232-5

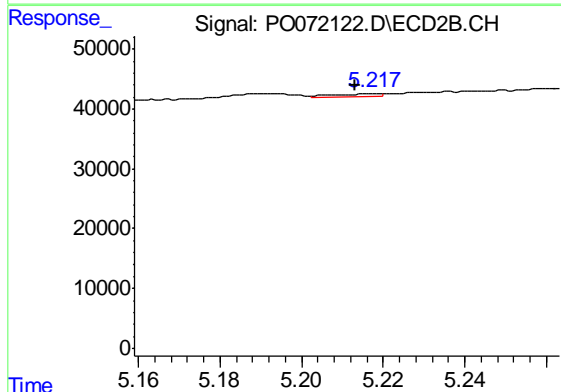
R.T.: 5.217 min  
 Delta R.T.: 0.004 min  
 Response: 4013  
 Conc: 8.27 ng/ml



#24 AR-1248-4

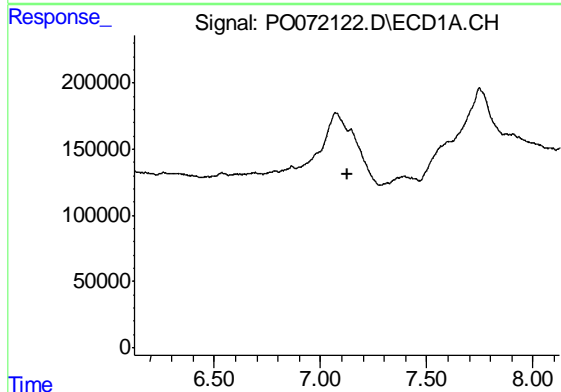
R.T.: 0.000 min  
 Exp R.T. : 6.556 min  
 Response: 0  
 Conc: N.D.

Instrument :  
 ECD\_O  
 ClientSampleId :  
 RO-RBR-200031



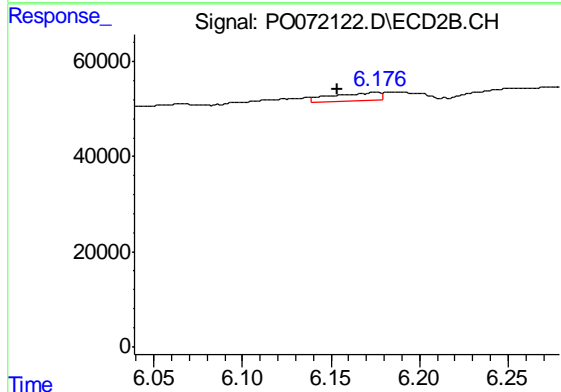
#24 AR-1248-4

R.T.: 5.217 min  
 Delta R.T.: 0.004 min  
 Response: 4013  
 Conc: 2.84 ng/ml



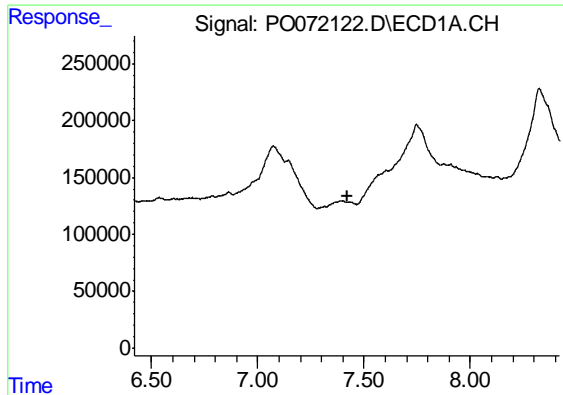
#28 AR-1254-3

R.T.: 0.000 min  
 Exp R.T. : 7.125 min  
 Response: 0  
 Conc: N.D.



#28 AR-1254-3

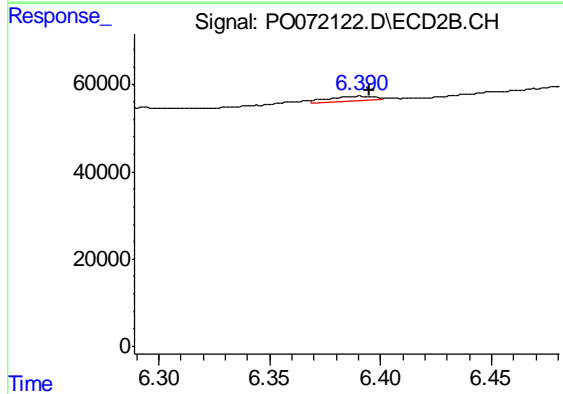
R.T.: 6.176 min  
 Delta R.T.: 0.023 min  
 Response: 31223  
 Conc: 9.20 ng/ml



#29 AR-1254-4

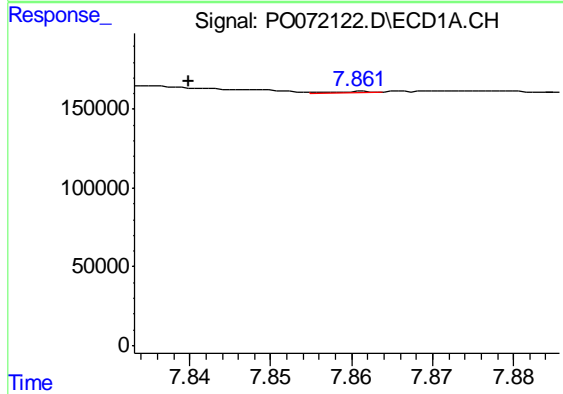
R.T.: 0.000 min  
 Exp R.T. : 7.420 min  
 Response: 0  
 Conc: N.D.

Instrument :  
 ECD\_O  
 ClientSampleId :  
 RO-RBR-200031



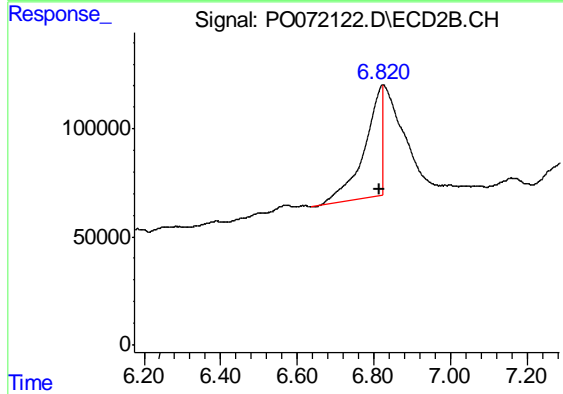
#29 AR-1254-4

R.T.: 6.391 min  
 Delta R.T.: -0.004 min  
 Response: 15643  
 Conc: 6.44 ng/ml



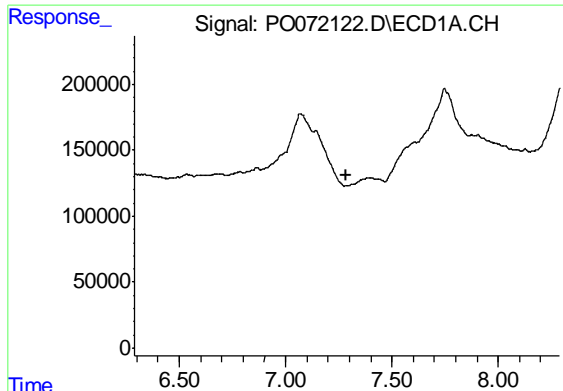
#30 AR-1254-5

R.T.: 7.861 min  
 Delta R.T.: 0.022 min  
 Response: 2586  
 Conc: 0.48 ng/ml



#30 AR-1254-5

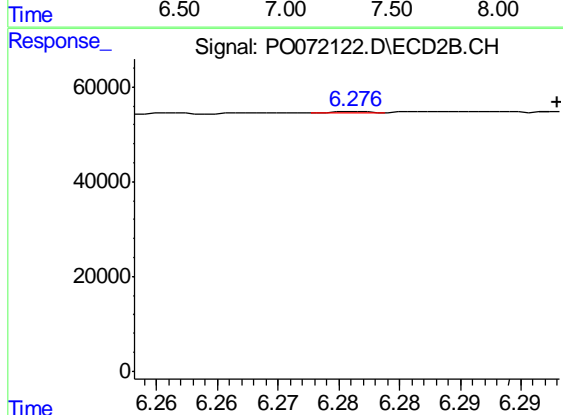
R.T.: 6.821 min  
 Delta R.T.: 0.005 min  
 Response: 1580422  
 Conc: 483.00 ng/ml



#31 AR-1260-1

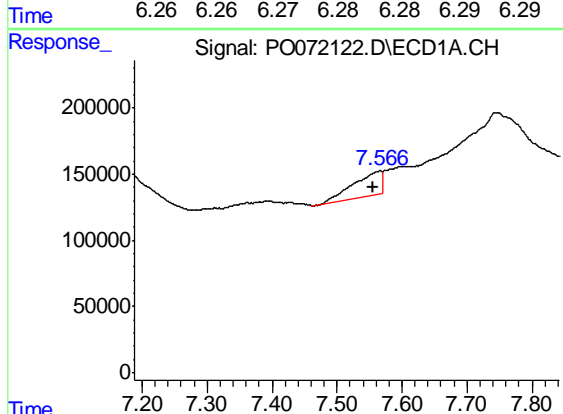
R.T.: 0.000 min  
 Exp R.T.: 7.288 min  
 Response: 0  
 Conc: N.D.

Instrument :  
 ECD\_O  
 ClientSampleId :  
 RO-RBR-200031



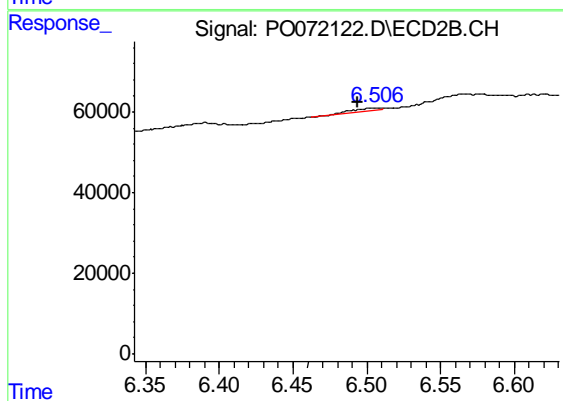
#31 AR-1260-1

R.T.: 6.277 min  
 Delta R.T.: -0.017 min  
 Response: 499  
 Conc: 0.19 ng/ml



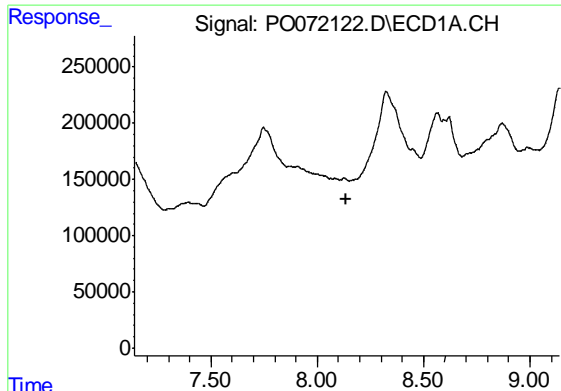
#32 AR-1260-2

R.T.: 7.566 min  
 Delta R.T.: 0.011 min  
 Response: 539066  
 Conc: 71.97 ng/ml



#32 AR-1260-2

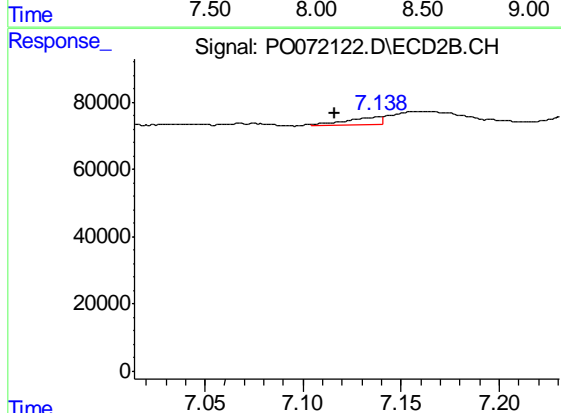
R.T.: 6.506 min  
 Delta R.T.: 0.012 min  
 Response: 11547  
 Conc: 3.61 ng/ml



#34 AR-1260-4

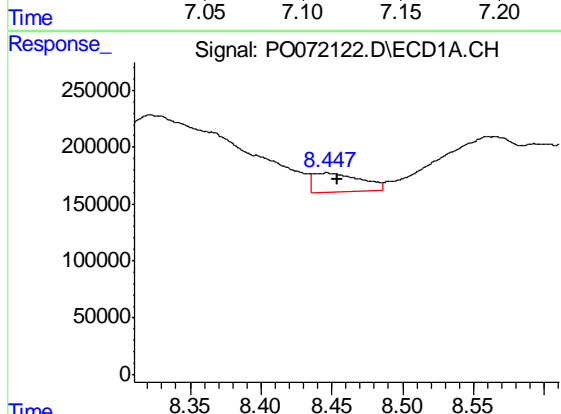
R.T.: 0.000 min  
 Exp R.T. : 8.139 min  
 Response: 0  
 Conc: N.D.

Instrument :  
 ECD\_O  
 ClientSampleId :  
 RO-RBR-200031



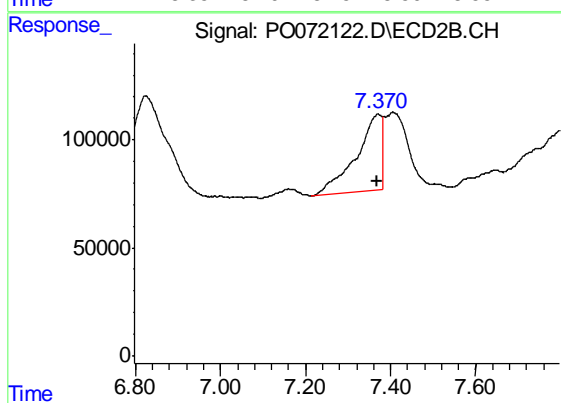
#34 AR-1260-4

R.T.: 7.139 min  
 Delta R.T.: 0.023 min  
 Response: 25884  
 Conc: 9.78 ng/ml



#35 AR-1260-5

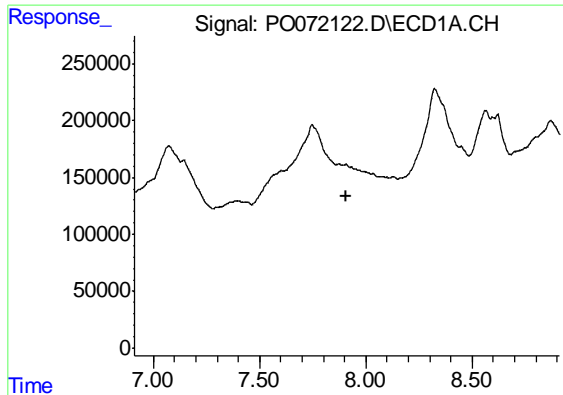
R.T.: 8.447 min  
 Delta R.T.: -0.007 min  
 Response: 372630  
 Conc: 26.89 ng/ml



#35 AR-1260-5

R.T.: 7.370 min  
 Delta R.T.: 0.002 min  
 Response: 1442240  
 Conc: 217.08 ng/ml

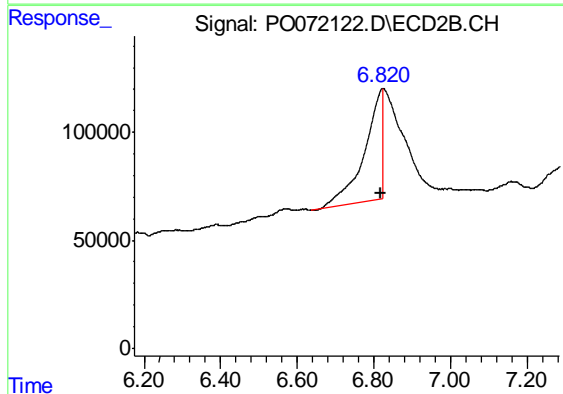




#36 AR-1262-1

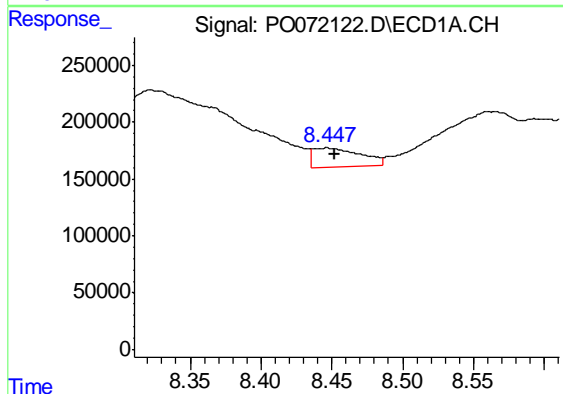
R.T.: 0.000 min  
 Exp R.T. : 7.911 min  
 Response: 0  
 Conc: N.D.

Instrument :  
 ECD\_O  
 ClientSampleId :  
 RO-RBR-200031



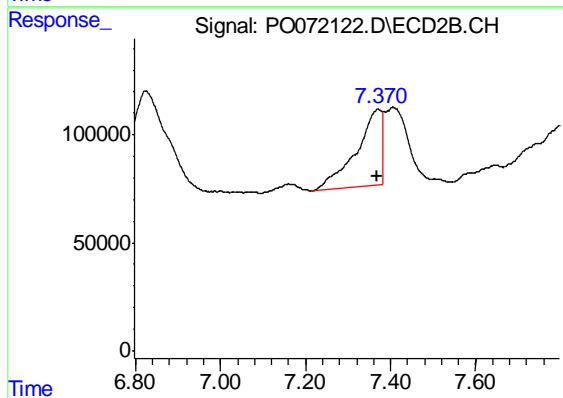
#36 AR-1262-1

R.T.: 6.821 min  
 Delta R.T.: 0.004 min  
 Response: 1580422  
 Conc: 892.38 ng/ml



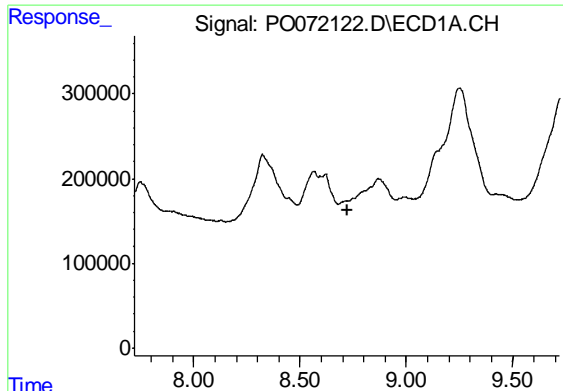
#37 AR-1262-2

R.T.: 8.447 min  
 Delta R.T.: -0.006 min  
 Response: 372630  
 Conc: 26.75 ng/ml



#37 AR-1262-2

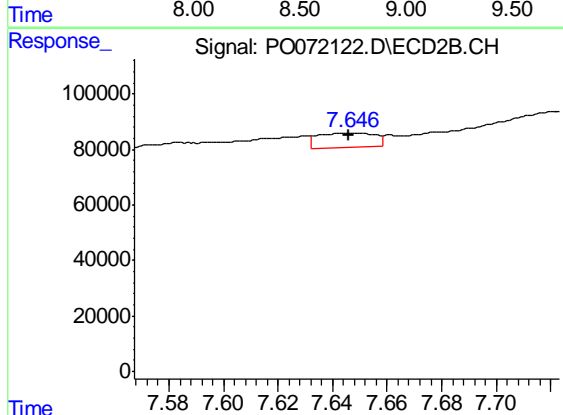
R.T.: 7.370 min  
 Delta R.T.: 0.003 min  
 Response: 1442240  
 Conc: 229.33 ng/ml



#38 AR-1262-3

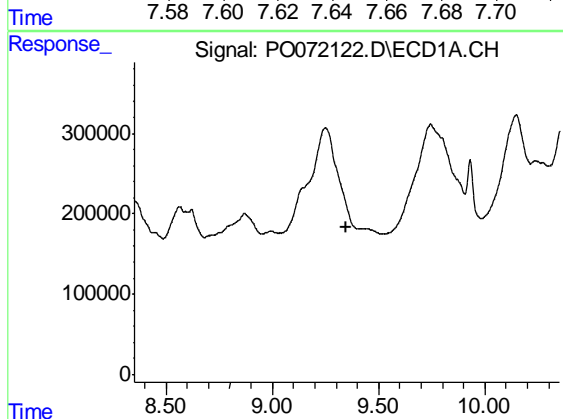
R.T.: 0.000 min  
 Exp R.T. : 8.720 min  
 Response: 0  
 Conc: N.D.

Instrument :  
 ECD\_O  
 ClientSampleId :  
 RO-RBR-200031



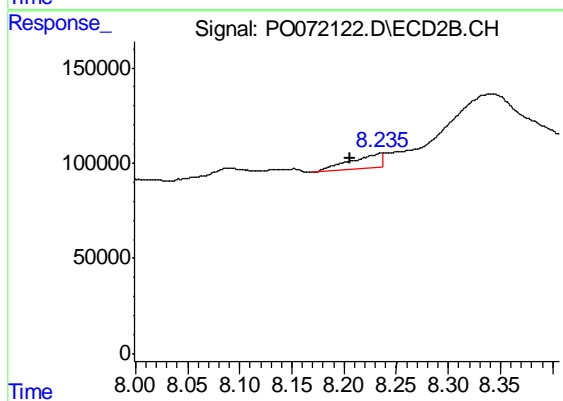
#38 AR-1262-3

R.T.: 7.647 min  
 Delta R.T.: 0.000 min  
 Response: 74319  
 Conc: 27.39 ng/ml



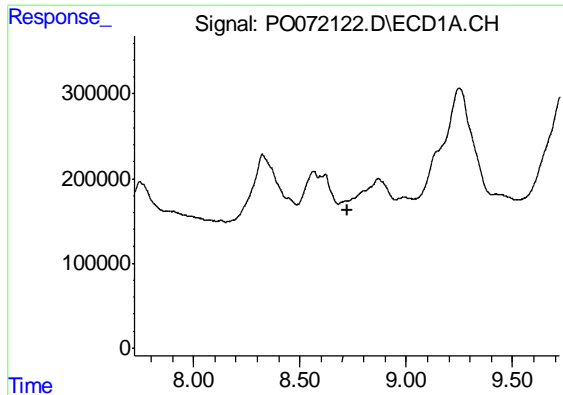
#40 AR-1262-5

R.T.: 0.000 min  
 Exp R.T. : 9.351 min  
 Response: 0  
 Conc: N.D.



#40 AR-1262-5

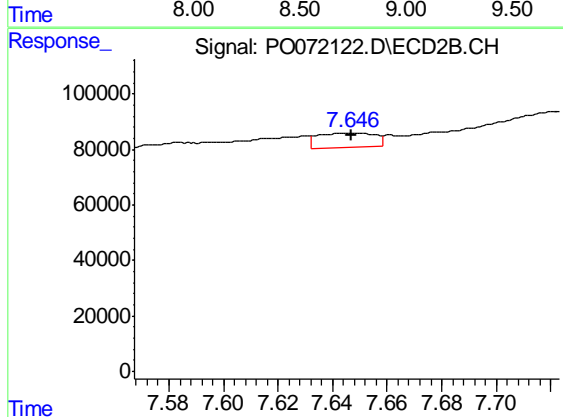
R.T.: 8.235 min  
 Delta R.T.: 0.029 min  
 Response: 158222  
 Conc: 63.87 ng/ml



#41 AR-1268-1

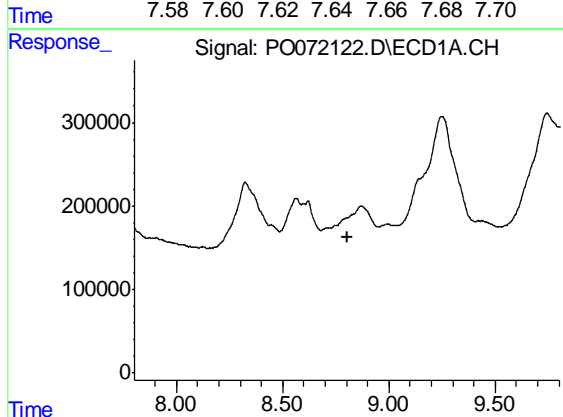
R.T.: 0.000 min  
 Exp R.T. : 8.721 min  
 Response: 0  
 Conc: N.D.

Instrument :  
 ECD\_O  
 ClientSampleId :  
 RO-RBR-200031



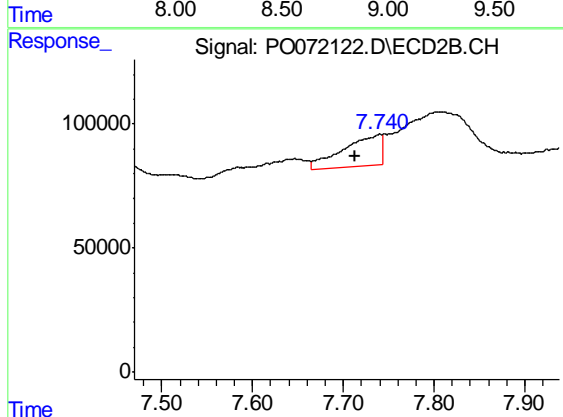
#41 AR-1268-1

R.T.: 7.647 min  
 Delta R.T.: 0.000 min  
 Response: 74319  
 Conc: 9.67 ng/ml



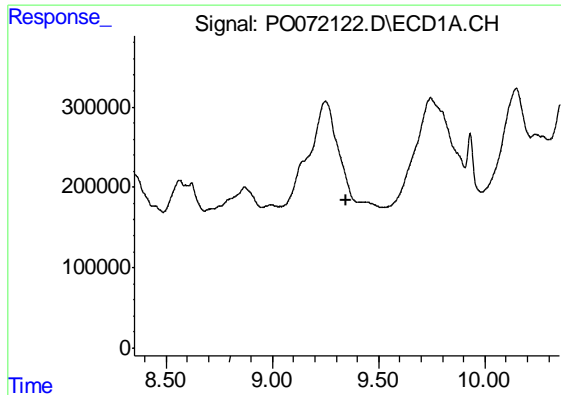
#42 AR-1268-2

R.T.: 0.000 min  
 Exp R.T. : 8.803 min  
 Response: 0  
 Conc: N.D.



#42 AR-1268-2

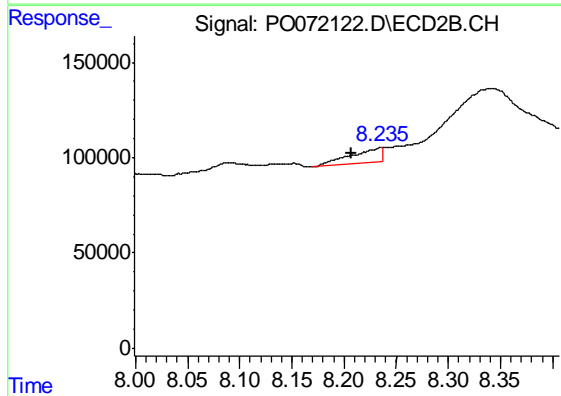
R.T.: 7.740 min  
 Delta R.T.: 0.028 min  
 Response: 373504  
 Conc: 53.50 ng/ml



#44 AR-1268-4

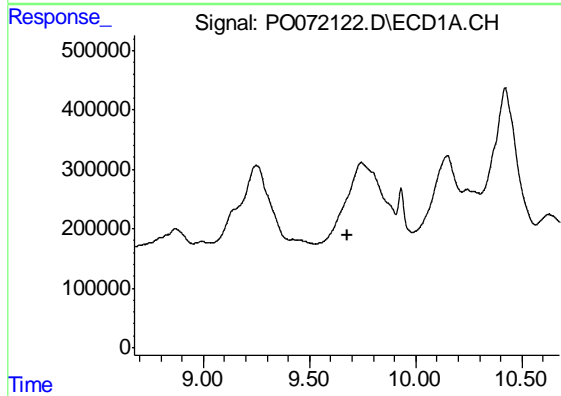
R.T.: 0.000 min  
 Exp R.T. : 9.351 min  
 Response: 0  
 Conc: N.D.

Instrument :  
 ECD\_O  
 ClientSampleId :  
 RO-RBR-200031



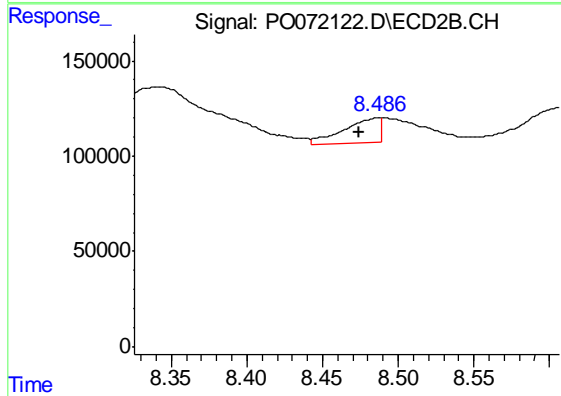
#44 AR-1268-4

R.T.: 8.235 min  
 Delta R.T.: 0.028 min  
 Response: 158222  
 Conc: 56.95 ng/ml



#45 AR-1268-5

R.T.: 0.000 min  
 Exp R.T. : 9.676 min  
 Response: 0  
 Conc: N.D.



#45 AR-1268-5

R.T.: 8.487 min  
 Delta R.T.: 0.013 min  
 Response: 221322  
 Conc: 11.70 ng/ml