

Data Path : Z:\pestpcbsrv\HPCHEM1\ECD\_0\Data\PO100820\  
 Data File : P0072140.D  
 Signal(s) : Signal #1: ECD1A.CH Signal #2: ECD2B.CH  
 Acq On : 08 Oct 2020 22:13  
 Operator : DD\AJ  
 Sample : L4334-05 5X  
 Misc :  
 ALS Vial : 32 Sample Multiplier: 1

Instrument :  
 ECD\_0  
 ClientSampleId :  
 PE-43-(4.5-5.0)

Integration File signal 1: autoint1.e  
 Integration File signal 2: autoint2.e  
 Quant Time: Oct 09 04:34:08 2020  
 Quant Method : Z:\pestpcbsrv\HPCHEM1\ECD\_0\methods\PO100320.M  
 Quant Title : GC EXTRACTABLES  
 QLast Update : Mon Oct 05 11:48:20 2020  
 Response via : Initial Calibration  
 Integrator: ChemStation 6890 Scale Mode: Small noise peaks clipped

Volume Inj. : 2 µl  
 Signal #1 Phase : ZB-MR1 Signal #2 Phase: ZB-MR2  
 Signal #1 Info : 30Mx0.32mmx 0.50µ Signal #2 Info : 30M x 0.32mm x 0.25µm

Compound	RT#1	RT#2	Resp#1	Resp#2	ng/ml	ng/ml
-----						
System Monitoring Compounds						
1) SA Tetrachlo...	4.326	3.510	301393	159796	4.196	4.266
2) SA Decachlor...	9.929	8.681	365277	206683	3.317	3.634
Target Compounds						
6) L1 AR-1016-4	0.000	4.990	0	44649	N.D.	41.832 #
7) L1 AR-1016-5	0.000	5.210	0	26043	N.D.	20.552 #
15) L3 AR-1232-5	5.919	5.210	81822	26043	149.605	53.664 #
20) L4 AR-1242-5	6.589	5.583	153669	239929	79.384	205.873 #
22) L5 AR-1248-2	5.919	4.990	81822	44649	39.759	37.315
24) L5 AR-1248-4	6.552	5.210	141224	26043	41.674	18.411 #
25) L5 AR-1248-5	6.589	5.626	153669	44002	48.362	28.323 #
26) L6 AR-1254-1	6.519	5.583	388772	239929	111.276	100.396
27) L6 AR-1254-2	6.746	5.744	706604	289359	128.345	135.280
28) L6 AR-1254-3	7.123	6.153	984757	605544	170.515	178.355
29) L6 AR-1254-4	7.417	6.394	1121010	485794	192.417	200.066
30) L6 AR-1254-5	7.838	6.814	1302237	819025	241.968	250.305
31) L7 AR-1260-1	7.285	6.290	428043	322537	89.312	125.971 #
32) L7 AR-1260-2	7.551	6.490	772069	342366	103.078	107.020
33) L7 AR-1260-3	7.905	6.631	218308	291228	34.243	98.681 #
34) L7 AR-1260-4	8.131	7.111	590533	87766	98.380	33.171 #
35) L7 AR-1260-5	8.450	7.364	443420	228739	32.000	34.428
36) L8 AR-1262-1	7.905	6.814	218308	819025	26.492	462.459 #
37) L8 AR-1262-2	8.450	7.364	443420	228739	31.836	36.371
38) L8 AR-1262-3	8.740f	7.642	264374	29455	43.193	10.857 #
39) L8 AR-1262-4	8.786	7.701	311150	186819	46.514	38.565
40) L8 AR-1262-5	0.000	8.201	0	37679	N.D.	15.211 #
41) L9 AR-1268-1	8.740f	7.642	264374	29455	15.642	3.832 #
42) L9 AR-1268-2	8.786f	7.701	311150	186819	21.879	26.758
44) L9 AR-1268-4	0.000	8.201	0	37679	N.D.	13.563 #

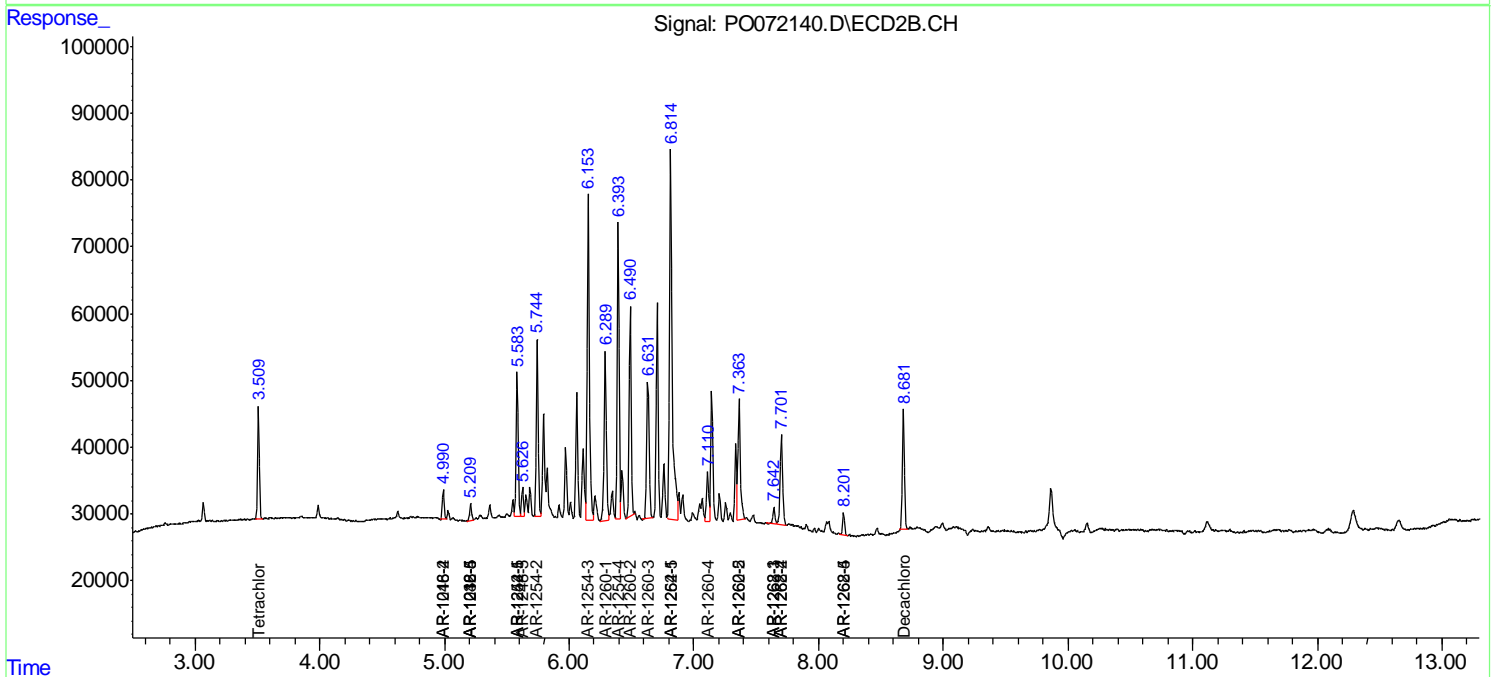
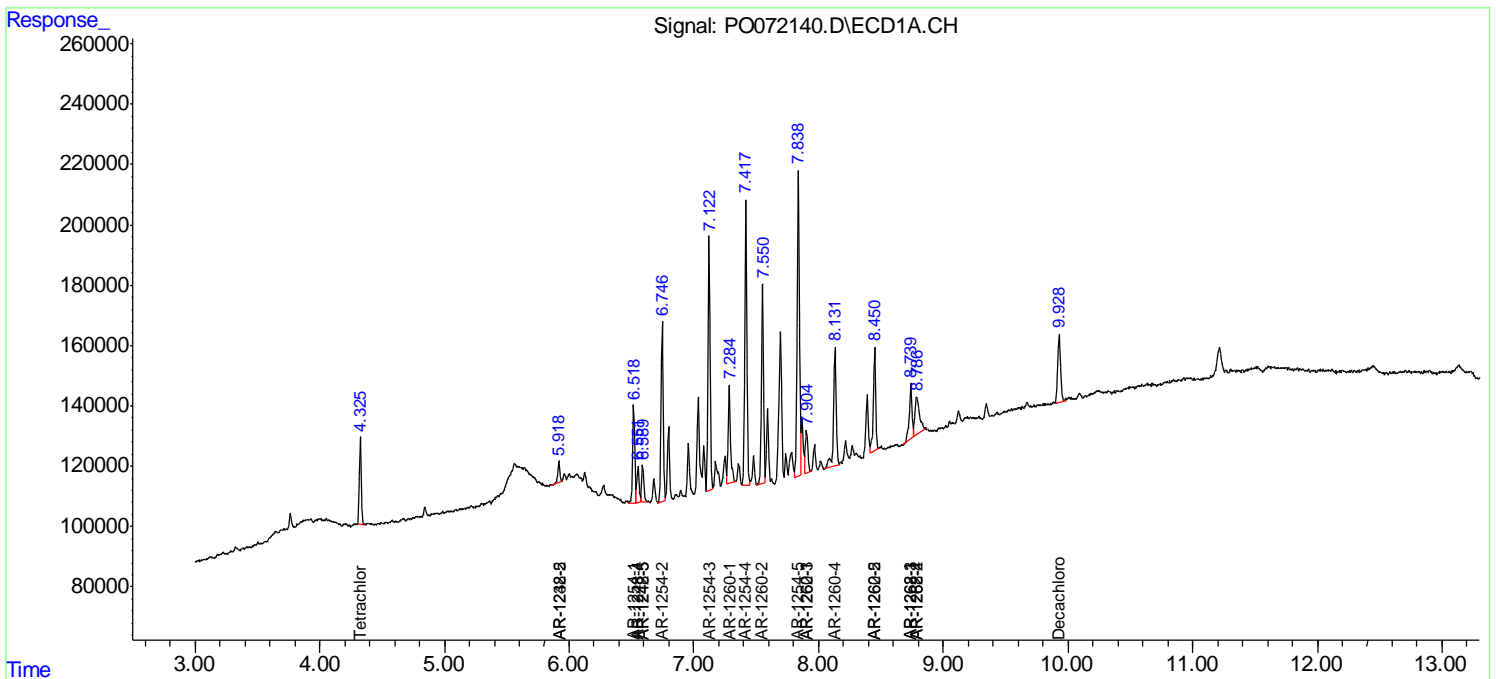
(f)=RT Delta > 1/2 Window (#)=Amounts differ by > 25% (m)=manual int.

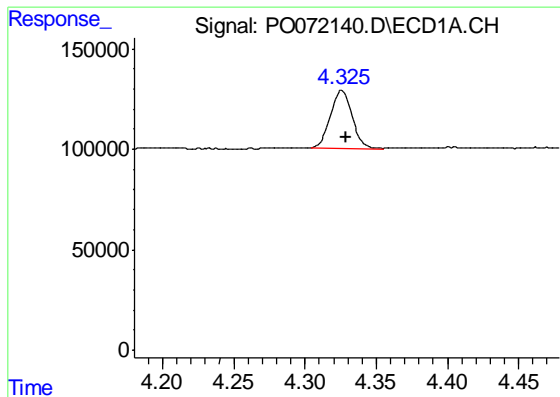
Data Path : Z:\pestpcbsrv\HPCHEM1\ECD\_O\Data\PO100820\  
 Data File : PO072140.D  
 Signal(s) : Signal #1: ECD1A.CH Signal #2: ECD2B.CH  
 Acq On : 08 Oct 2020 22:13  
 Operator : DD\AJ  
 Sample : L4334-05 5X  
 Misc :  
 ALS Vial : 32 Sample Multiplier: 1

Instrument :  
 ECD\_O  
 ClientSampled :  
 PE-43-(4.5-5.0)

Integration File signal 1: autoint1.e  
 Integration File signal 2: autoint2.e  
 Quant Time: Oct 09 04:34:08 2020  
 Quant Method : Z:\pestpcbsrv\HPCHEM1\ECD\_O\methods\PO100320.M  
 Quant Title : GC EXTRACTABLES  
 QLast Update : Mon Oct 05 11:48:20 2020  
 Response via : Initial Calibration  
 Integrator: ChemStation 6890 Scale Mode: Small noise peaks clipped

Volume Inj. : 2 µl  
 Signal #1 Phase : ZB-MR1 Signal #2 Phase: ZB-MR2  
 Signal #1 Info : 30Mx0.32mmx 0.50µ Signal #2 Info : 30M x 0.32mm x 0.25µm

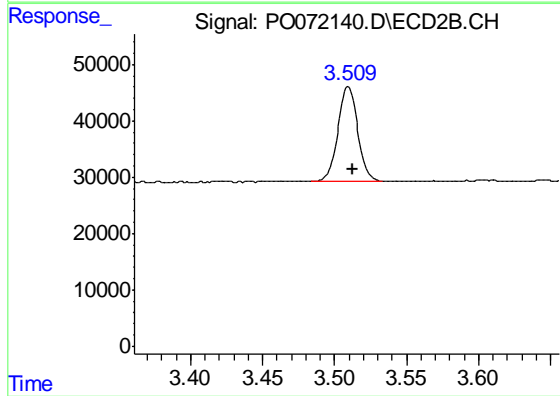




#1 Tetrachloro-m-xylene

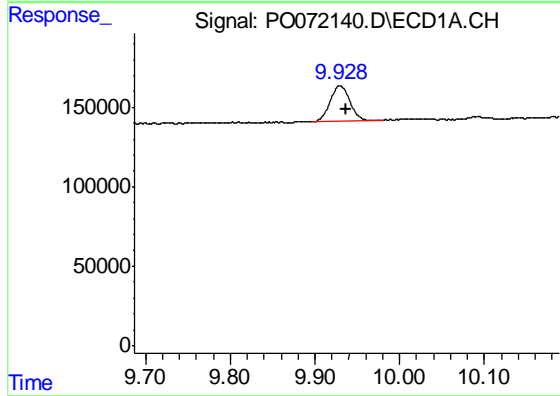
R.T.: 4.326 min  
 Delta R.T.: -0.003 min  
 Response: 301393  
 Conc: 4.20 ng/ml

Instrument :  
 ECD\_O  
 ClientSampleId :  
 PE-43-(4.5-5.0)



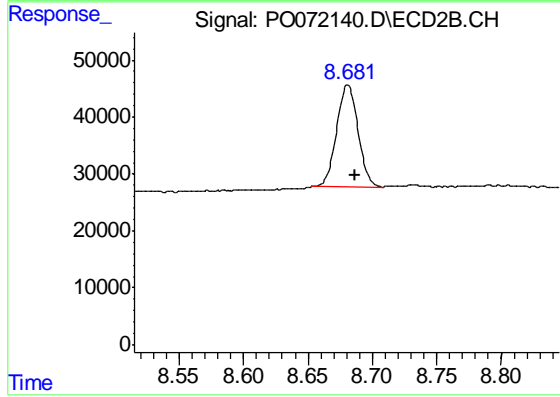
#1 Tetrachloro-m-xylene

R.T.: 3.510 min  
 Delta R.T.: -0.003 min  
 Response: 159796  
 Conc: 4.27 ng/ml



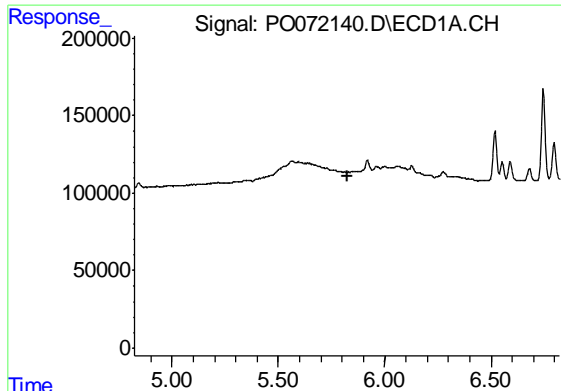
#2 Decachlorobiphenyl

R.T.: 9.929 min  
 Delta R.T.: -0.008 min  
 Response: 365277  
 Conc: 3.32 ng/ml



#2 Decachlorobiphenyl

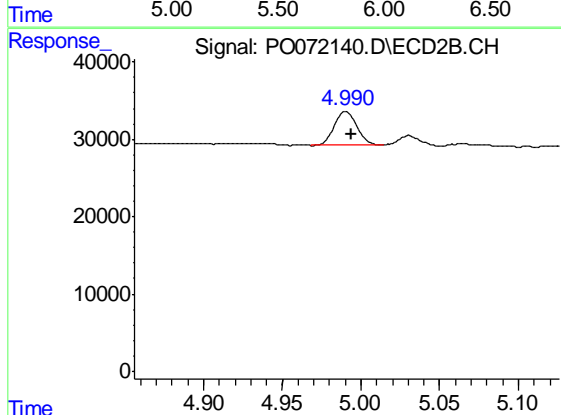
R.T.: 8.681 min  
 Delta R.T.: -0.006 min  
 Response: 206683  
 Conc: 3.63 ng/ml



#6 AR-1016-4

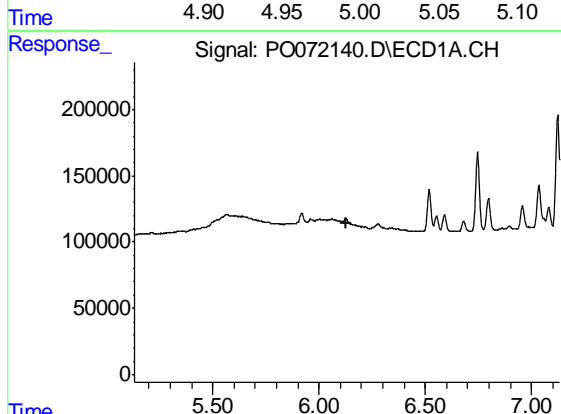
R.T.: 0.000 min  
 Exp R.T. : 5.823 min  
 Response: 0  
 Conc: N.D.

Instrument :  
 ECD\_O  
 ClientSampled :  
 PE-43-(4.5-5.0)



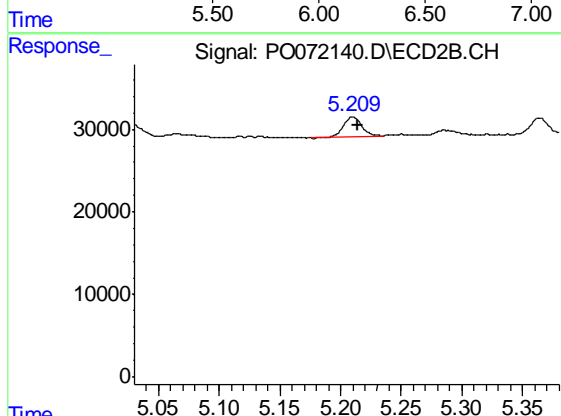
#6 AR-1016-4

R.T.: 4.990 min  
 Delta R.T.: -0.003 min  
 Response: 44649  
 Conc: 41.83 ng/ml



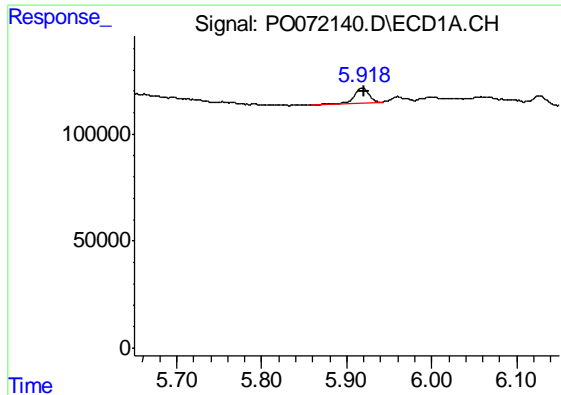
#7 AR-1016-5

R.T.: 0.000 min  
 Exp R.T. : 6.131 min  
 Response: 0  
 Conc: N.D.



#7 AR-1016-5

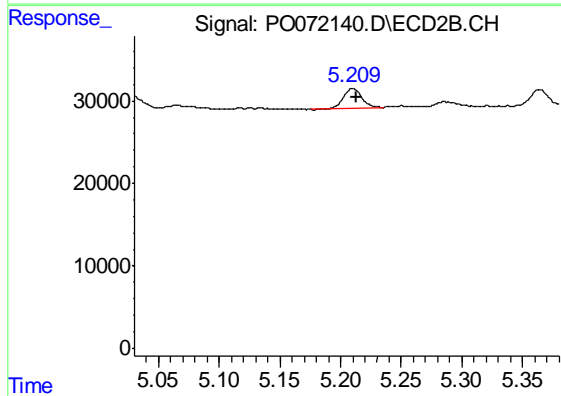
R.T.: 5.210 min  
 Delta R.T.: -0.004 min  
 Response: 26043  
 Conc: 20.55 ng/ml



#15 AR-1232-5

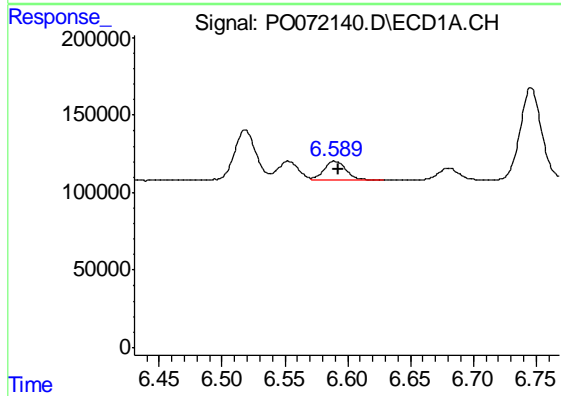
R.T.: 5.919 min  
 Delta R.T.: -0.001 min  
 Response: 81822  
 Conc: 149.61 ng/ml

Instrument :  
 ECD\_O  
 ClientSampleId :  
 PE-43-(4.5-5.0)



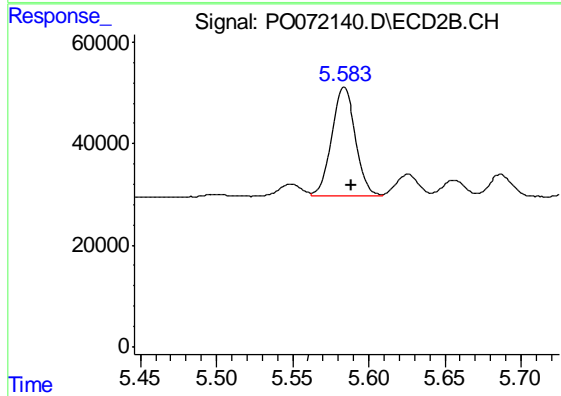
#15 AR-1232-5

R.T.: 5.210 min  
 Delta R.T.: -0.003 min  
 Response: 26043  
 Conc: 53.66 ng/ml



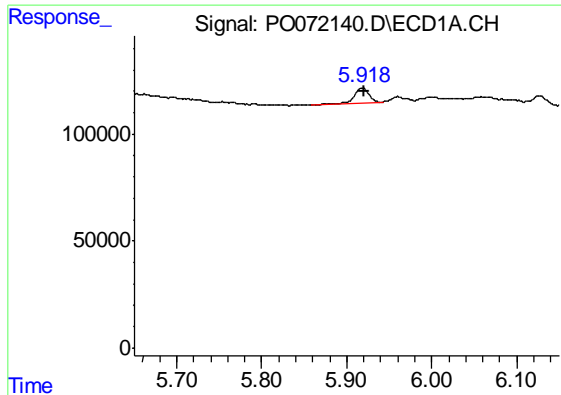
#20 AR-1242-5

R.T.: 6.589 min  
 Delta R.T.: -0.004 min  
 Response: 153669  
 Conc: 79.38 ng/ml



#20 AR-1242-5

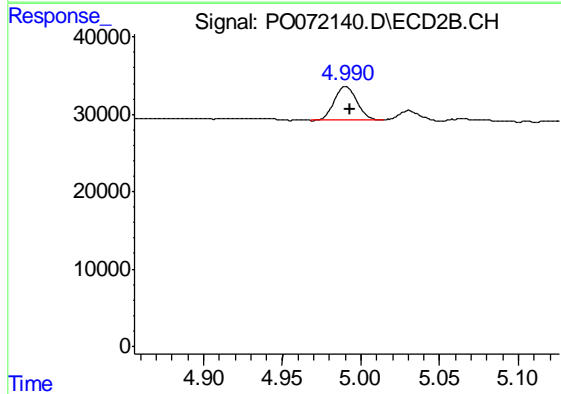
R.T.: 5.583 min  
 Delta R.T.: -0.005 min  
 Response: 239929  
 Conc: 205.87 ng/ml



#22 AR-1248-2

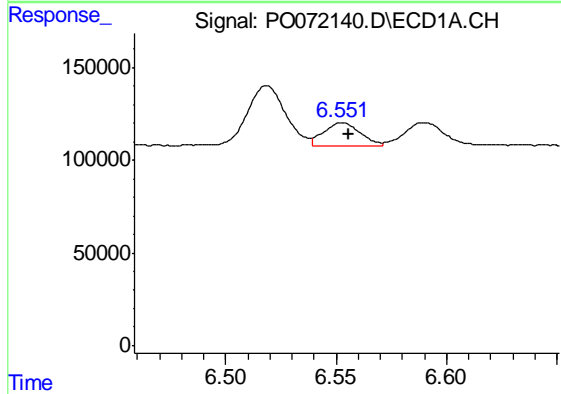
R.T.: 5.919 min  
 Delta R.T.: -0.001 min  
 Response: 81822  
 Conc: 39.76 ng/ml

Instrument :  
 ECD\_O  
 ClientSampleId :  
 PE-43-(4.5-5.0)



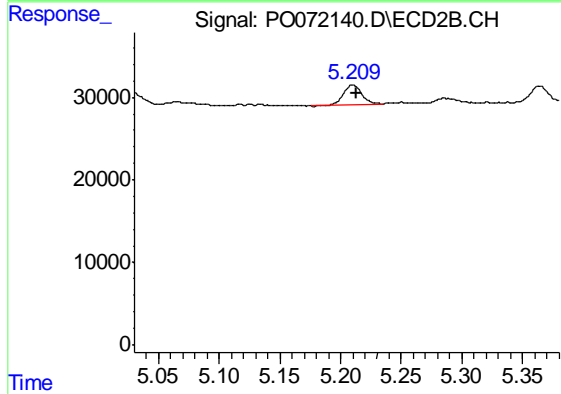
#22 AR-1248-2

R.T.: 4.990 min  
 Delta R.T.: -0.003 min  
 Response: 44649  
 Conc: 37.31 ng/ml



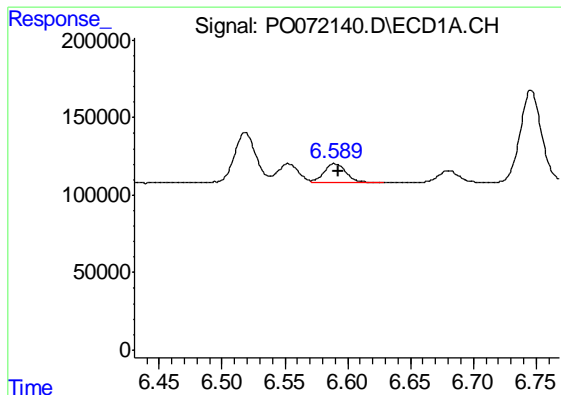
#24 AR-1248-4

R.T.: 6.552 min  
 Delta R.T.: -0.003 min  
 Response: 141224  
 Conc: 41.67 ng/ml



#24 AR-1248-4

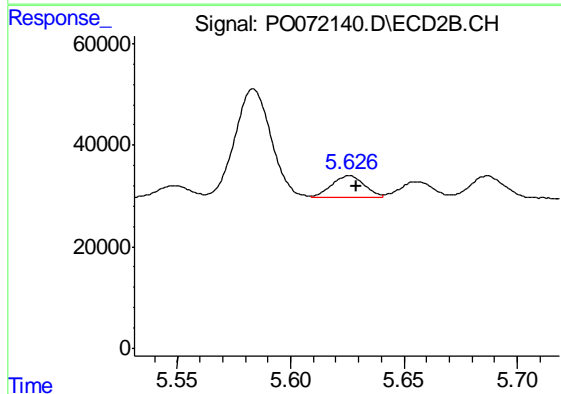
R.T.: 5.210 min  
 Delta R.T.: -0.003 min  
 Response: 26043  
 Conc: 18.41 ng/ml



#25 AR-1248-5

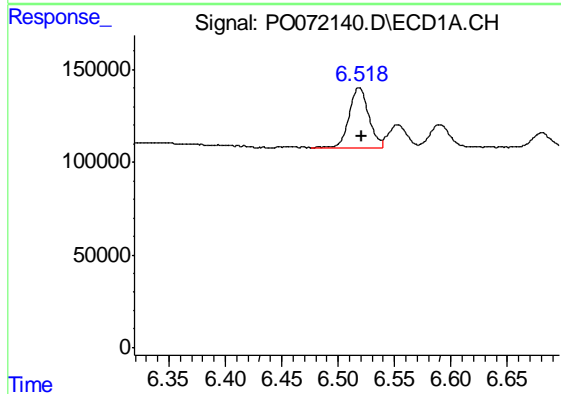
R.T.: 6.589 min  
 Delta R.T.: -0.004 min  
 Response: 153669  
 Conc: 48.36 ng/ml

Instrument :  
 ECD\_O  
 ClientSampleId :  
 PE-43-(4.5-5.0)



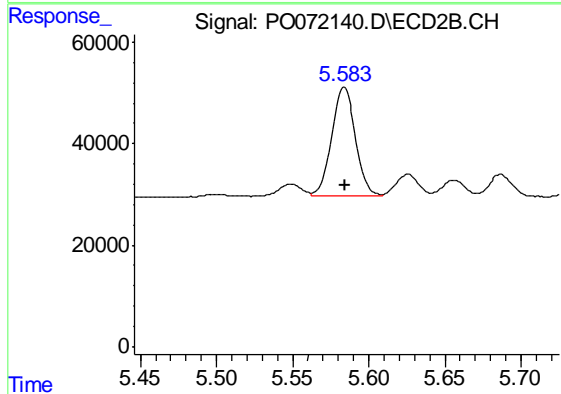
#25 AR-1248-5

R.T.: 5.626 min  
 Delta R.T.: -0.003 min  
 Response: 44002  
 Conc: 28.32 ng/ml



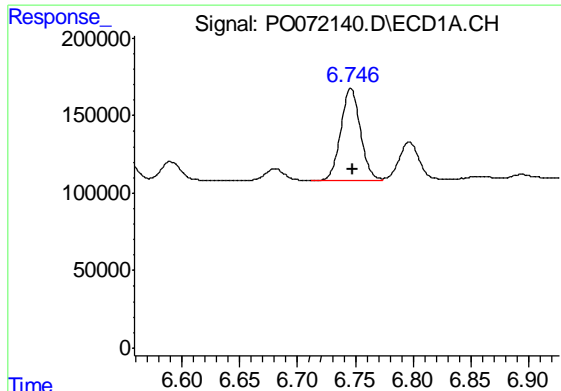
#26 AR-1254-1

R.T.: 6.519 min  
 Delta R.T.: -0.003 min  
 Response: 388772  
 Conc: 111.28 ng/ml



#26 AR-1254-1

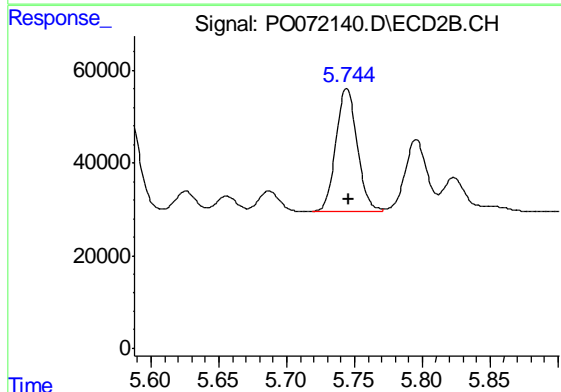
R.T.: 5.583 min  
 Delta R.T.: 0.000 min  
 Response: 239929  
 Conc: 100.40 ng/ml



#27 AR-1254-2

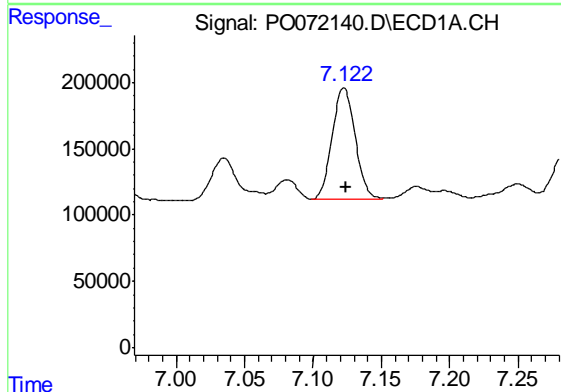
R.T.: 6.746 min  
 Delta R.T.: -0.002 min  
 Response: 706604  
 Conc: 128.34 ng/ml

Instrument :  
 ECD\_O  
 ClientSampleId :  
 PE-43-(4.5-5.0)



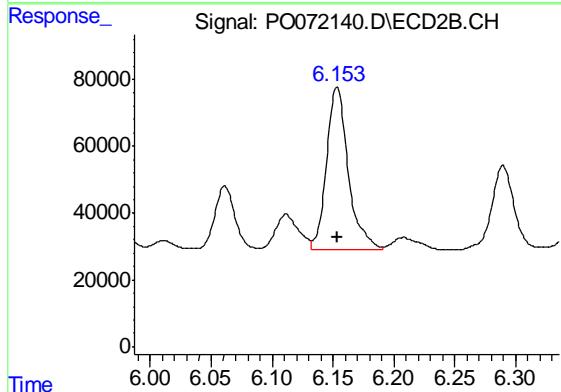
#27 AR-1254-2

R.T.: 5.744 min  
 Delta R.T.: -0.002 min  
 Response: 289359  
 Conc: 135.28 ng/ml



#28 AR-1254-3

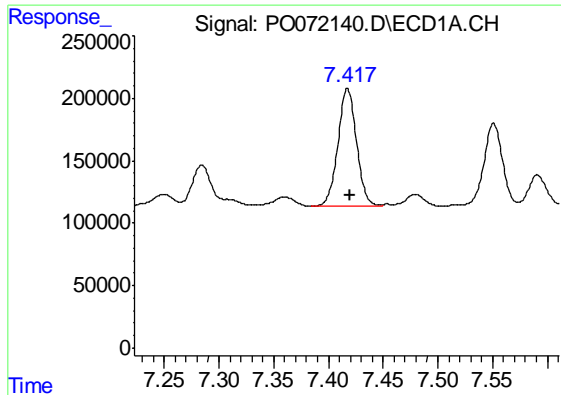
R.T.: 7.123 min  
 Delta R.T.: -0.002 min  
 Response: 984757  
 Conc: 170.52 ng/ml



#28 AR-1254-3

R.T.: 6.153 min  
 Delta R.T.: 0.000 min  
 Response: 605544  
 Conc: 178.36 ng/ml

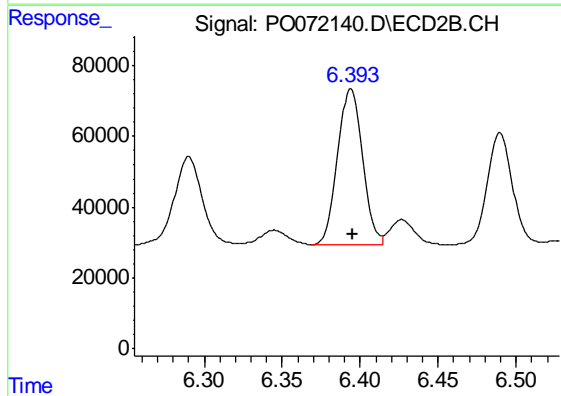




#29 AR-1254-4

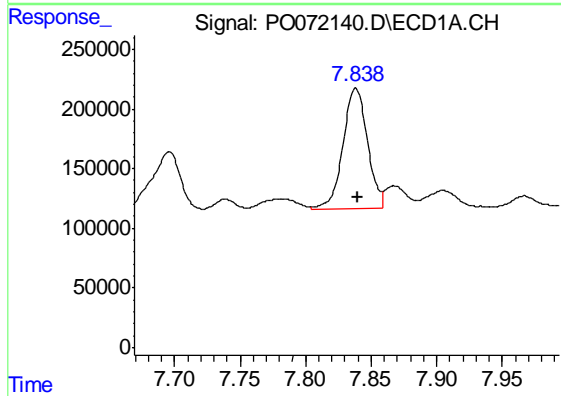
R.T.: 7.417 min  
 Delta R.T.: -0.002 min  
 Response: 1121010  
 Conc: 192.42 ng/ml

Instrument :  
 ECD\_O  
 ClientSampleId :  
 PE-43-(4.5-5.0)



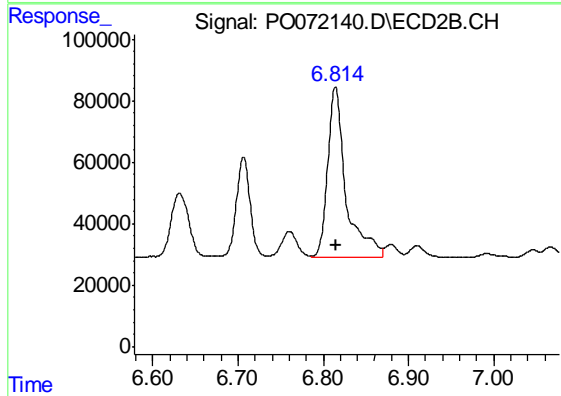
#29 AR-1254-4

R.T.: 6.394 min  
 Delta R.T.: -0.001 min  
 Response: 485794  
 Conc: 200.07 ng/ml



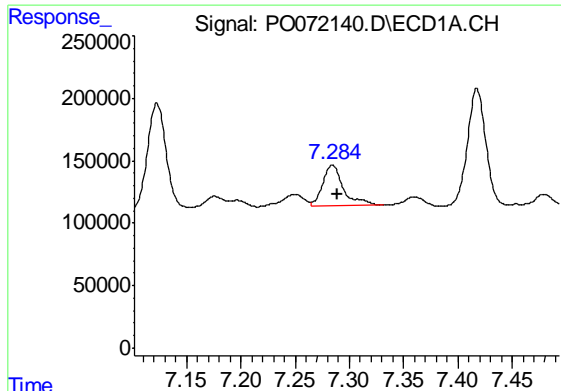
#30 AR-1254-5

R.T.: 7.838 min  
 Delta R.T.: -0.002 min  
 Response: 1302237  
 Conc: 241.97 ng/ml



#30 AR-1254-5

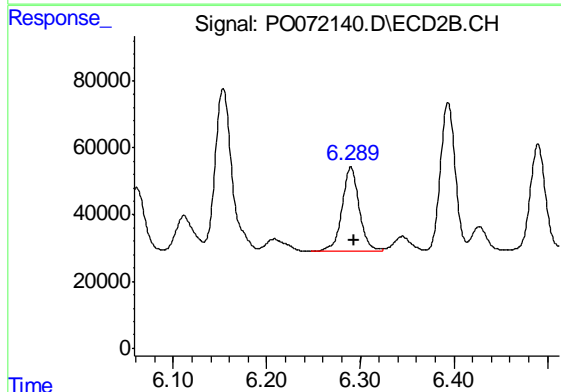
R.T.: 6.814 min  
 Delta R.T.: -0.001 min  
 Response: 819025  
 Conc: 250.31 ng/ml



#31 AR-1260-1

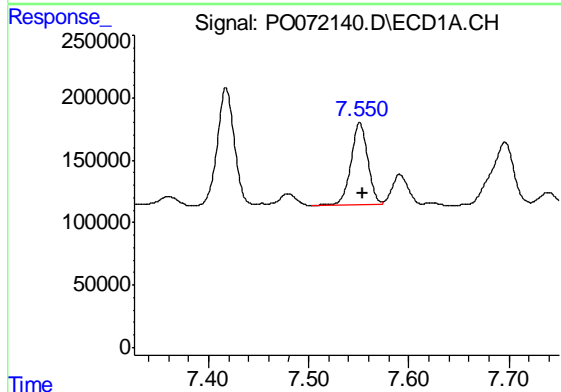
R.T.: 7.285 min  
Delta R.T.: -0.004 min  
Response: 428043  
Conc: 89.31 ng/ml

Instrument :  
ECD\_O  
ClientSampleId :  
PE-43-(4.5-5.0)



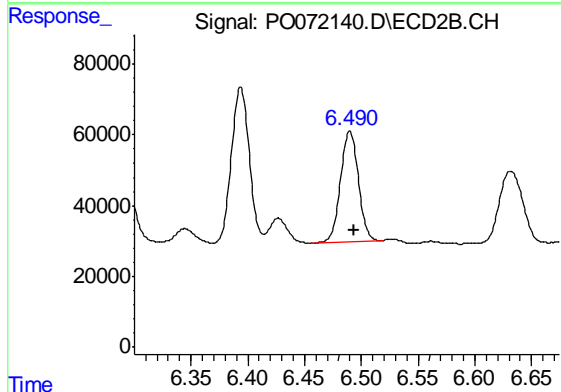
#31 AR-1260-1

R.T.: 6.290 min  
Delta R.T.: -0.003 min  
Response: 322537  
Conc: 125.97 ng/ml



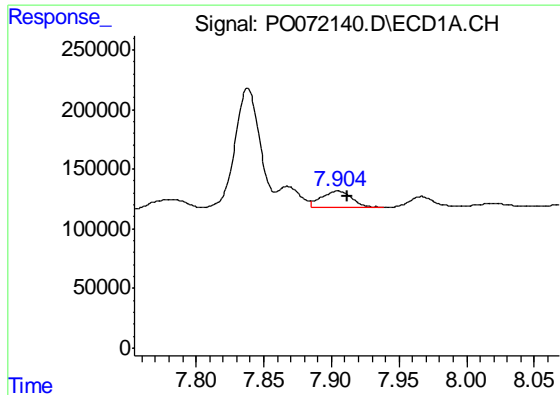
#32 AR-1260-2

R.T.: 7.551 min  
Delta R.T.: -0.004 min  
Response: 772069  
Conc: 103.08 ng/ml



#32 AR-1260-2

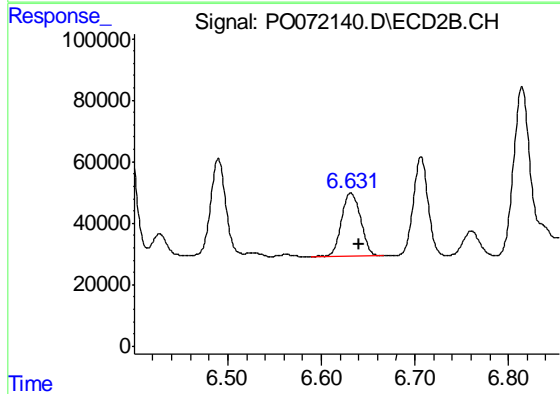
R.T.: 6.490 min  
Delta R.T.: -0.004 min  
Response: 342366  
Conc: 107.02 ng/ml



#33 AR-1260-3

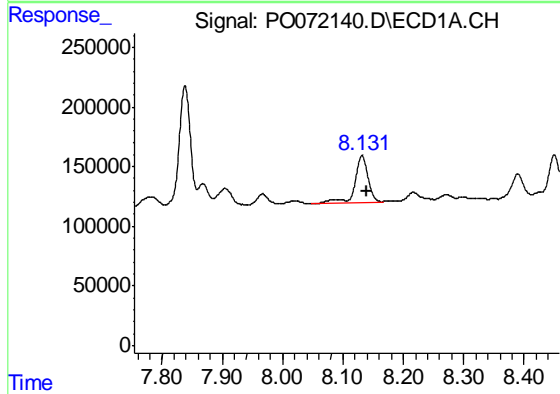
R.T.: 7.905 min  
 Delta R.T.: -0.007 min  
 Response: 218308  
 Conc: 34.24 ng/ml

Instrument :  
 ECD\_O  
 ClientSampleId :  
 PE-43-(4.5-5.0)



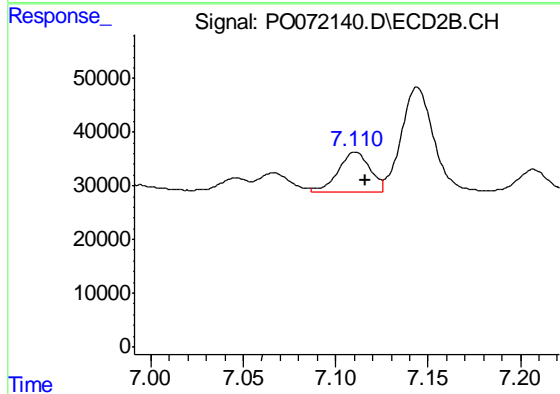
#33 AR-1260-3

R.T.: 6.631 min  
 Delta R.T.: -0.009 min  
 Response: 291228  
 Conc: 98.68 ng/ml



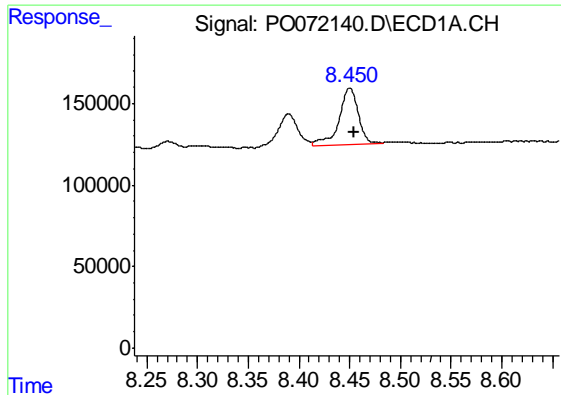
#34 AR-1260-4

R.T.: 8.131 min  
 Delta R.T.: -0.008 min  
 Response: 590533  
 Conc: 98.38 ng/ml



#34 AR-1260-4

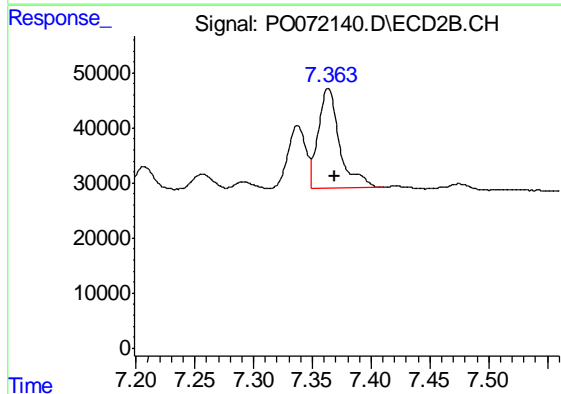
R.T.: 7.111 min  
 Delta R.T.: -0.005 min  
 Response: 87766  
 Conc: 33.17 ng/ml



#35 AR-1260-5

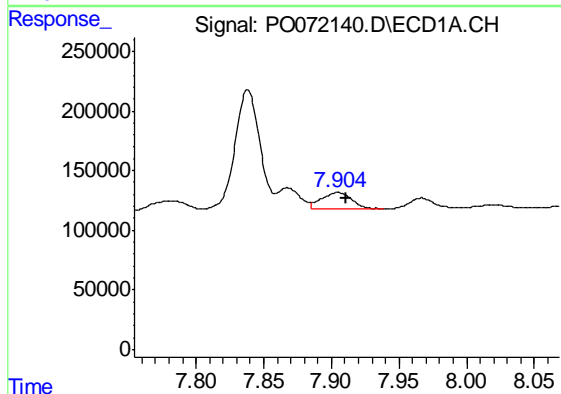
R.T.: 8.450 min  
 Delta R.T.: -0.004 min  
 Response: 443420  
 Conc: 32.00 ng/ml

Instrument :  
 ECD\_O  
 ClientSampleId :  
 PE-43-(4.5-5.0)



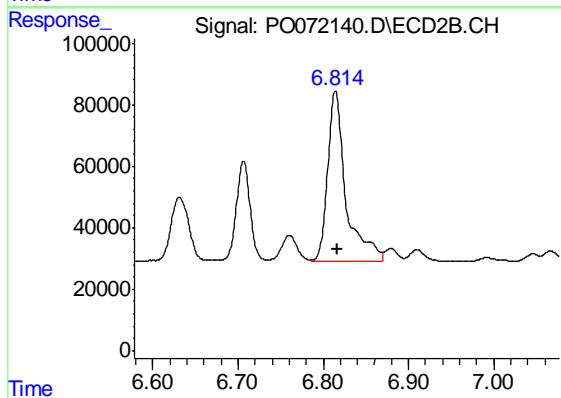
#35 AR-1260-5

R.T.: 7.364 min  
 Delta R.T.: -0.005 min  
 Response: 228739  
 Conc: 34.43 ng/ml



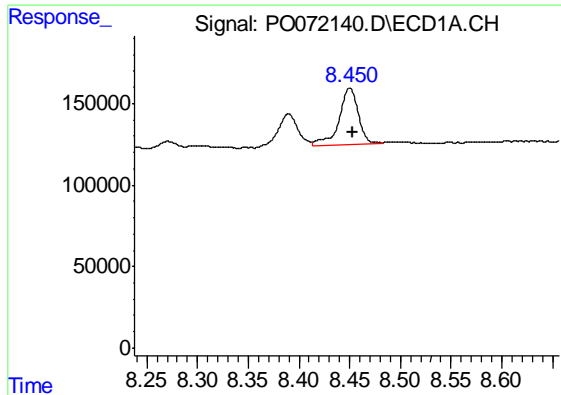
#36 AR-1262-1

R.T.: 7.905 min  
 Delta R.T.: -0.006 min  
 Response: 218308  
 Conc: 26.49 ng/ml



#36 AR-1262-1

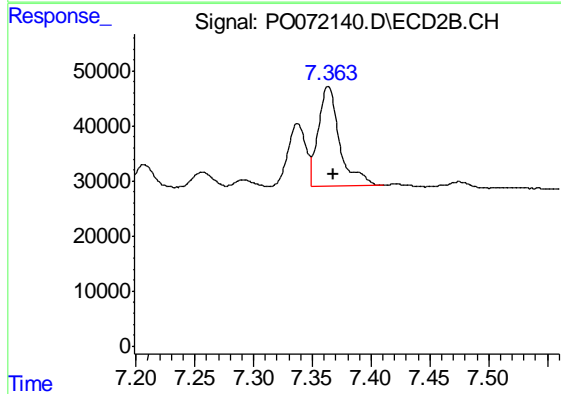
R.T.: 6.814 min  
 Delta R.T.: -0.002 min  
 Response: 819025  
 Conc: 462.46 ng/ml



#37 AR-1262-2

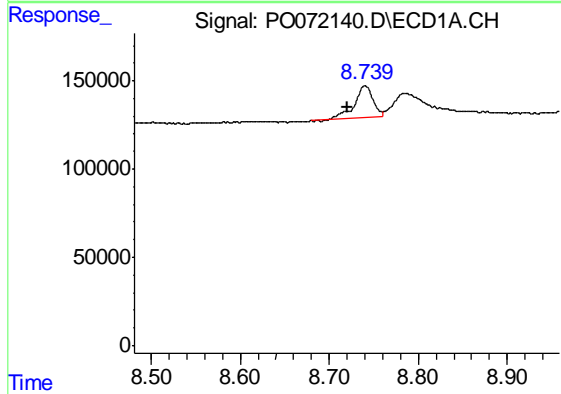
R.T.: 8.450 min  
 Delta R.T.: -0.002 min  
 Response: 443420  
 Conc: 31.84 ng/ml

Instrument :  
 ECD\_O  
 ClientSampleId :  
 PE-43-(4.5-5.0)



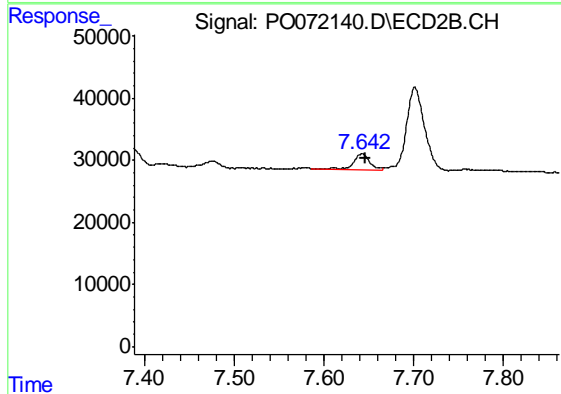
#37 AR-1262-2

R.T.: 7.364 min  
 Delta R.T.: -0.004 min  
 Response: 228739  
 Conc: 36.37 ng/ml



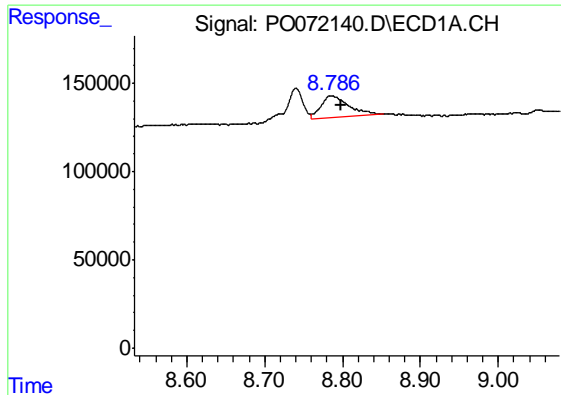
#38 AR-1262-3

R.T.: 8.740 min  
 Delta R.T.: 0.020 min  
 Response: 264374  
 Conc: 43.19 ng/ml



#38 AR-1262-3

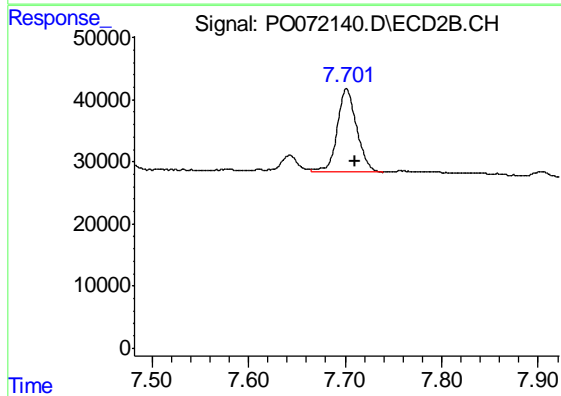
R.T.: 7.642 min  
 Delta R.T.: -0.004 min  
 Response: 29455  
 Conc: 10.86 ng/ml



#39 AR-1262-4

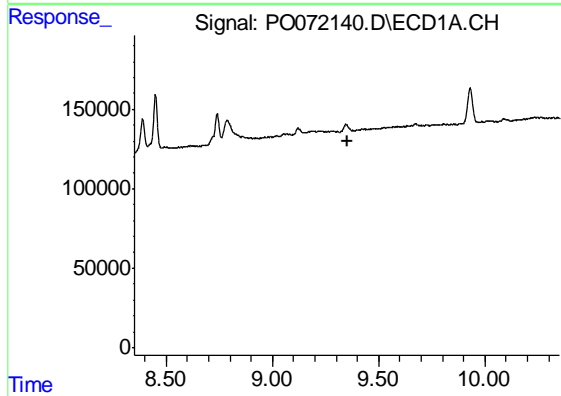
R.T.: 8.786 min  
 Delta R.T.: -0.012 min  
 Response: 311150  
 Conc: 46.51 ng/ml

Instrument :  
 ECD\_O  
 ClientSampleId :  
 PE-43-(4.5-5.0)



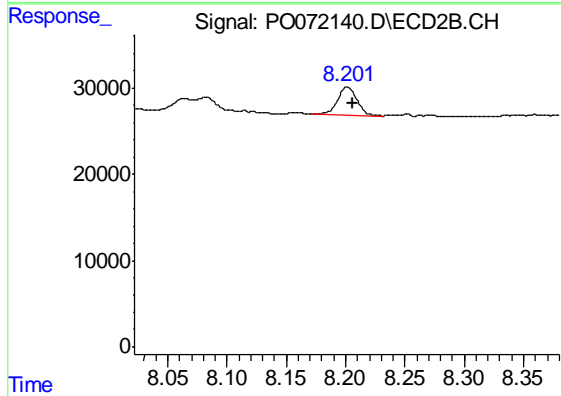
#39 AR-1262-4

R.T.: 7.701 min  
 Delta R.T.: -0.009 min  
 Response: 186819  
 Conc: 38.56 ng/ml



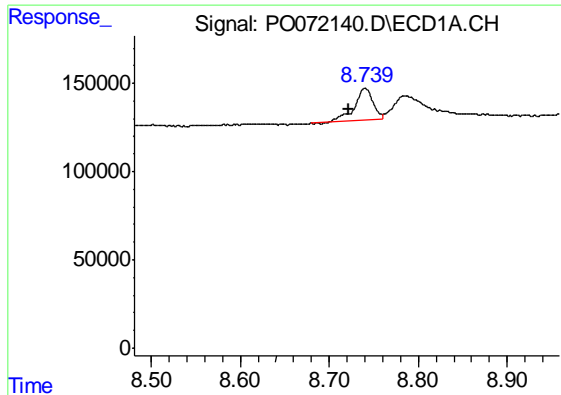
#40 AR-1262-5

R.T.: 0.000 min  
 Exp R.T. : 9.351 min  
 Response: 0  
 Conc: N.D.



#40 AR-1262-5

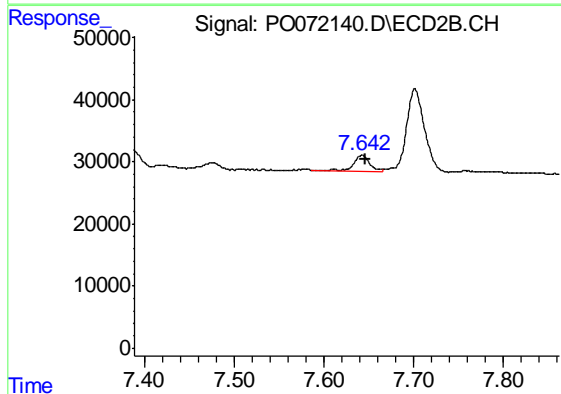
R.T.: 8.201 min  
 Delta R.T.: -0.005 min  
 Response: 37679  
 Conc: 15.21 ng/ml



#41 AR-1268-1

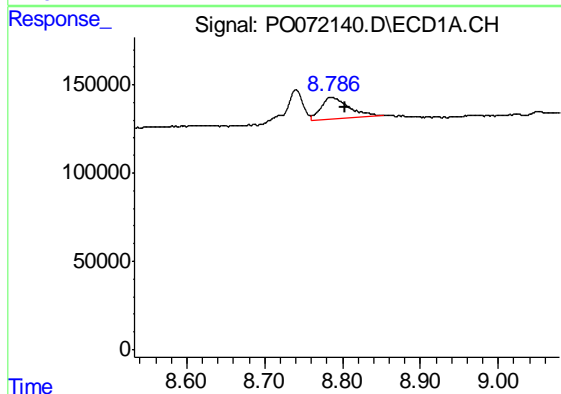
R.T.: 8.740 min  
 Delta R.T.: 0.019 min  
 Response: 264374  
 Conc: 15.64 ng/ml

Instrument :  
 ECD\_O  
 ClientSampleId :  
 PE-43-(4.5-5.0)



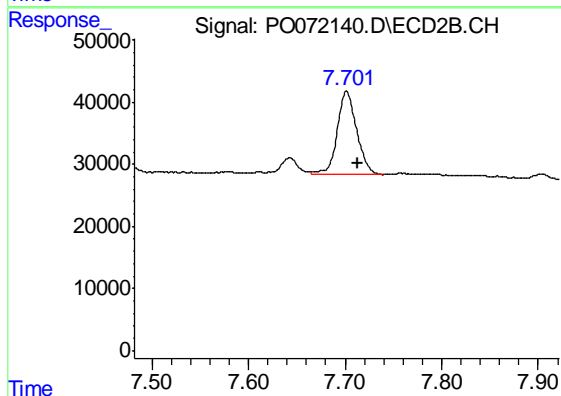
#41 AR-1268-1

R.T.: 7.642 min  
 Delta R.T.: -0.004 min  
 Response: 29455  
 Conc: 3.83 ng/ml



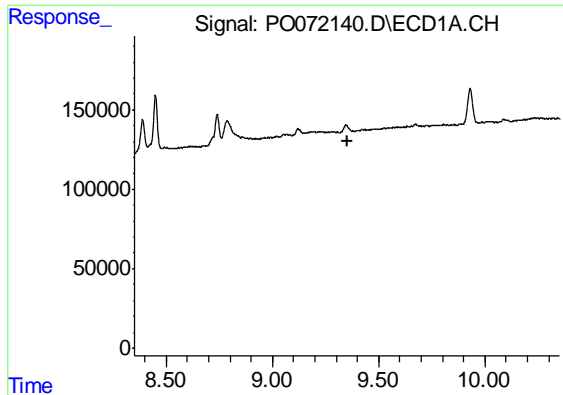
#42 AR-1268-2

R.T.: 8.786 min  
 Delta R.T.: -0.017 min  
 Response: 311150  
 Conc: 21.88 ng/ml



#42 AR-1268-2

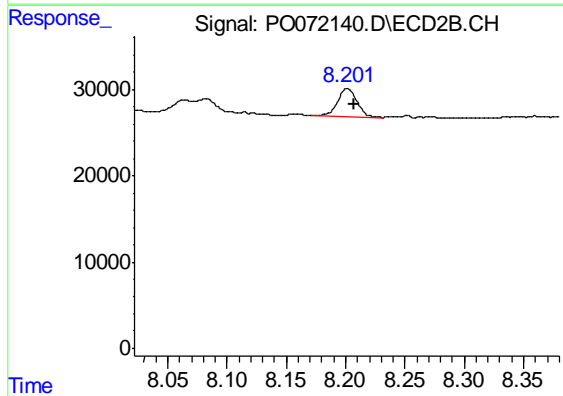
R.T.: 7.701 min  
 Delta R.T.: -0.011 min  
 Response: 186819  
 Conc: 26.76 ng/ml



#44 AR-1268-4

R.T.: 0.000 min  
Exp R.T. : 9.351 min  
Response: 0  
Conc: N.D.

Instrument :  
ECD\_O  
ClientSampleId :  
PE-43-(4.5-5.0)



#44 AR-1268-4

R.T.: 8.201 min  
Delta R.T.: -0.005 min  
Response: 37679  
Conc: 13.56 ng/ml