

Data Path : Z:\pestpcbsrv\HPCHEM1\ECD\_0\Data\PO100821\  
 Data File : PO081916.D  
 Signal(s) : Signal #1: ECD1A.CH Signal #2: ECD2B.CH  
 Acq On : 08 Oct 2021 13:27  
 Operator : AJ\MA  
 Sample : AR1242CCC500  
 Misc :  
 ALS Vial : 4 Sample Multiplier: 1

**Instrument :**  
 ECD\_0  
**ClientSampleId :**  
 AR1242CCC500

**Manual Integrations**  
**APPROVED**

mohammad  
 10/12/2021 8:42:24 AM

Integration File signal 1: autoint1.e  
 Integration File signal 2: autoint2.e  
 Quant Time: Oct 09 03:49:24 2021  
 Quant Method : Z:\pestpcbsrv\HPCHEM1\ECD\_0\methods\PO100621.M  
 Quant Title : GC EXTRACTABLES  
 QLast Update : Thu Oct 07 09:43:36 2021  
 Response via : Initial Calibration  
 Integrator: ChemStation 6890 Scale Mode: Small noise peaks clipped

Volume Inj. : 2 µl  
 Signal #1 Phase : ZB-MR1 Signal #2 Phase: ZB-MR2  
 Signal #1 Info : 30Mx0.32mmx 0.50µ Signal #2 Info : 30M x 0.32mm x 0.25µm

Compound	RT#1	RT#2	Resp#1	Resp#2	ng/ml	ng/ml
-----						
System Monitoring Compounds						
1) SA Tetrachlo...	4.992	3.979	4285987	1333307	51.649	52.691
2) SA Decachlor...	11.116	9.310	3084345	1212069	52.000	51.309
Target Compounds						
16) L4 AR-1242-1	6.324	5.242	1076885	411184	523.649	532.524
17) L4 AR-1242-2	6.349	5.262	1531405	554243	522.439	524.953
18) L4 AR-1242-3	6.416	5.454	966700	301259	530.107	533.326
19) L4 AR-1242-4	6.523	5.552	790005	317168	554.408	508.867
20) L4 AR-1242-5	7.311	6.117	742588	400687	508.699m	549.118
-----						

(f)=RT Delta > 1/2 Window (#)=Amounts differ by > 25% (m)=manual int.

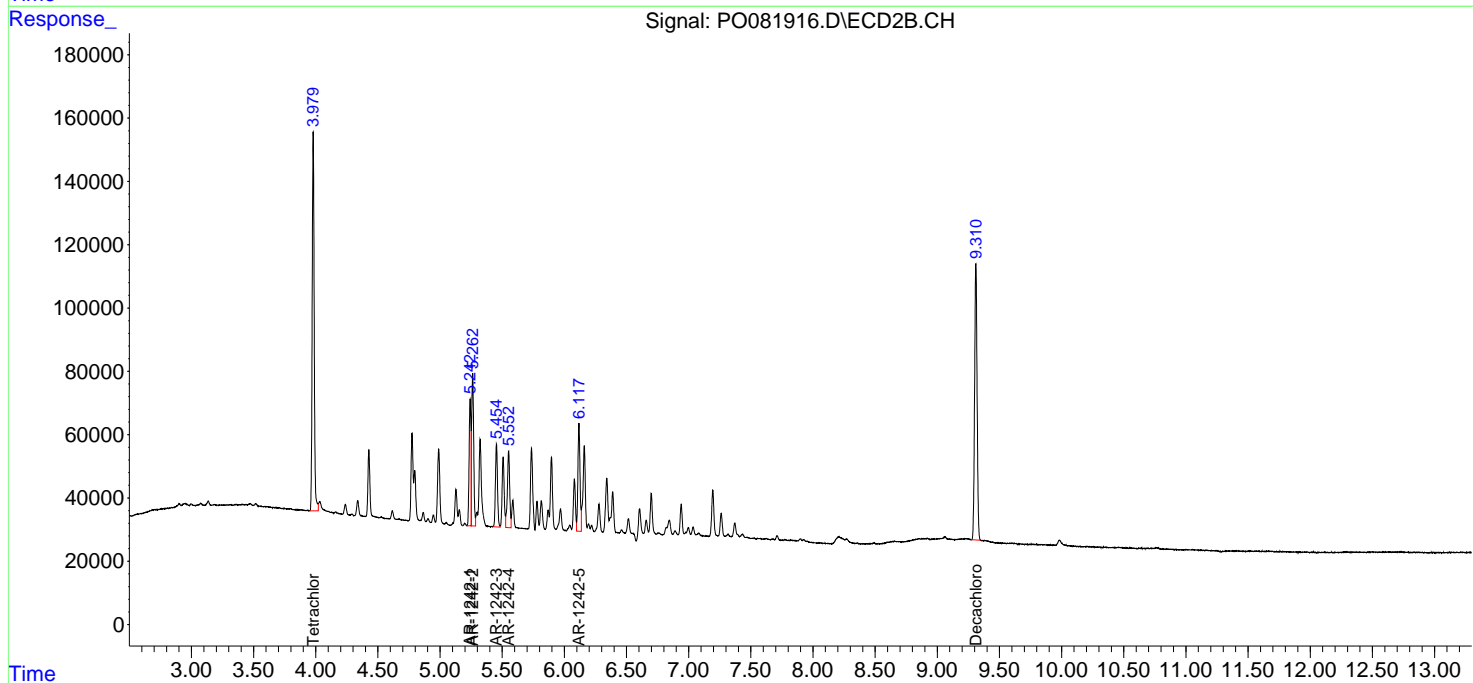
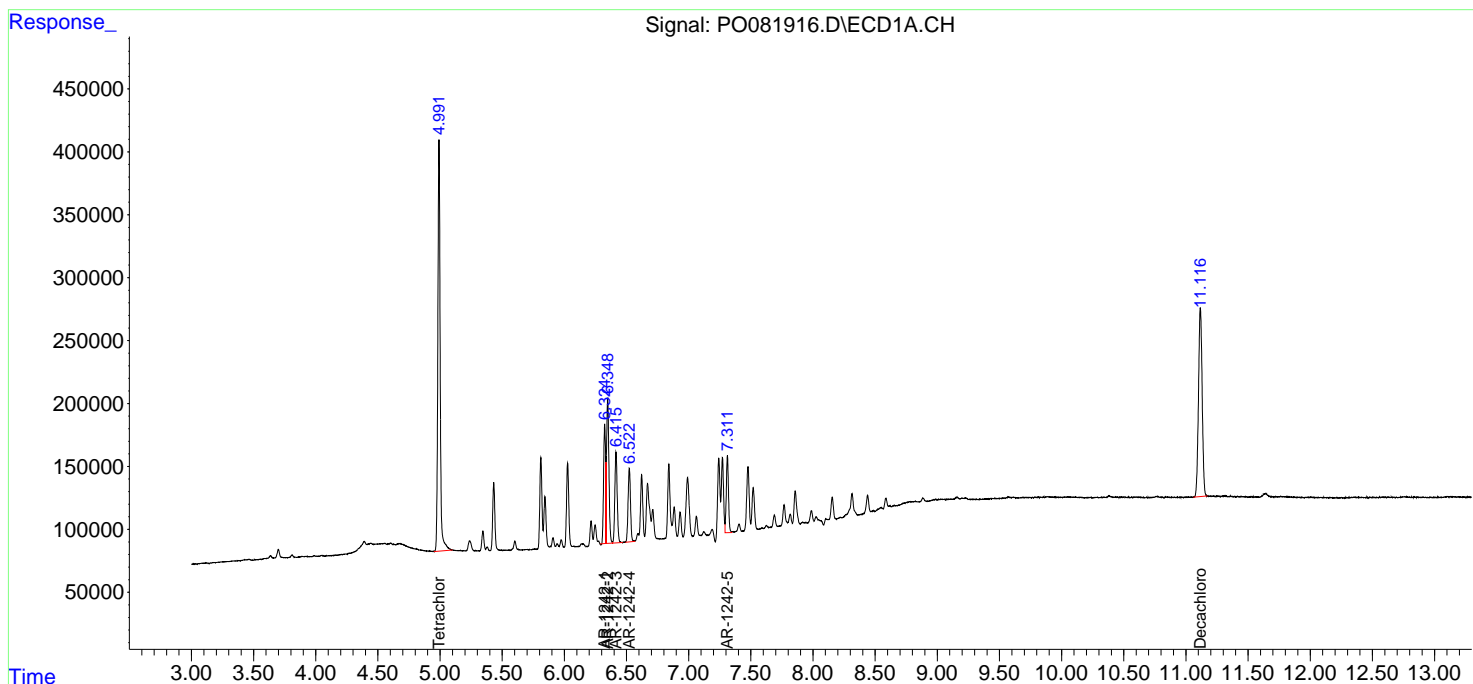
Data Path : Z:\pestpcbsrv\HPCHEM1\ECD\_0\Data\PO100821\  
 Data File : PO081916.D  
 Signal(s) : Signal #1: ECD1A.CH Signal #2: ECD2B.CH  
 Acq On : 08 Oct 2021 13:27  
 Operator : AJ\MA  
 Sample : AR1242CCC500  
 Misc :  
 ALS Vial : 4 Sample Multiplier: 1

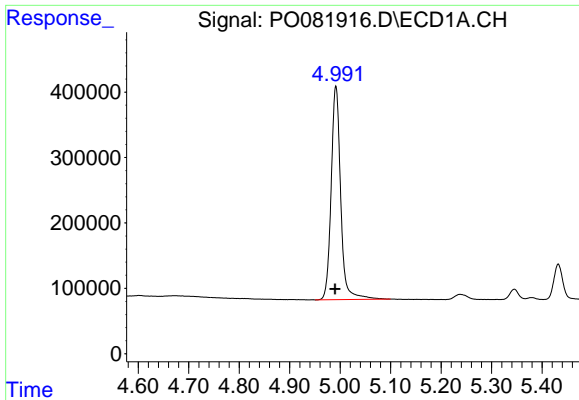
**Instrument :**  
 ECD\_O  
**ClientSampled :**  
 AR1242CCC500

**Manual Integrations**  
**APPROVED**  
 mohammad  
 10/12/2021 8:42:24 AM

Integration File signal 1: autoint1.e  
 Integration File signal 2: autoint2.e  
 Quant Time: Oct 09 03:49:24 2021  
 Quant Method : Z:\pestpcbsrv\HPCHEM1\ECD\_0\methods\PO100621.M  
 Quant Title : GC EXTRACTABLES  
 QLast Update : Thu Oct 07 09:43:36 2021  
 Response via : Initial Calibration  
 Integrator: ChemStation 6890 Scale Mode: Small noise peaks clipped

Volume Inj. : 2 µl  
 Signal #1 Phase : ZB-MR1 Signal #2 Phase: ZB-MR2  
 Signal #1 Info : 30Mx0.32mmx 0.50µ Signal #2 Info : 30M x 0.32mm x 0.25µm

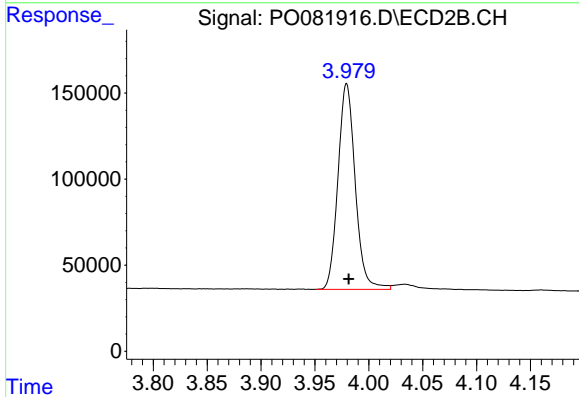




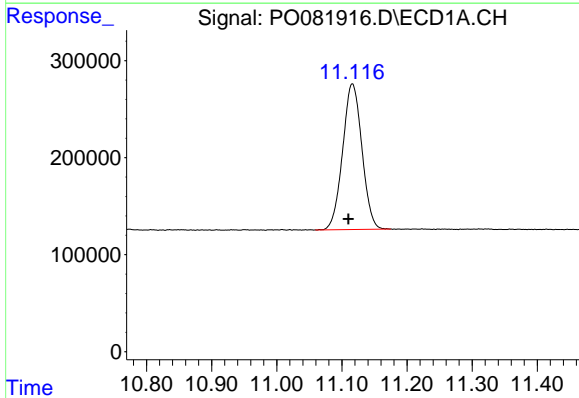
#1 Tetrachloro-m-xylene  
 R.T.: 4.992 min  
 Delta R.T.: 0.002 min  
 Response: 4285987  
 Conc: 51.65 ng/ml

Instrument :  
 ECD\_O  
 ClientSampled :  
 AR1242CCC500

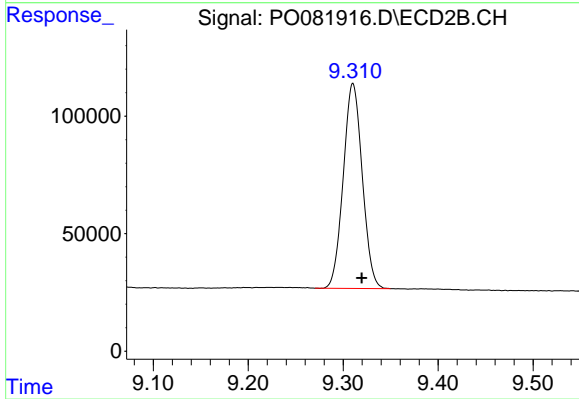
Manual Integrations  
 APPROVED  
 mohammad  
 10/12/2021 8:42:24 AM



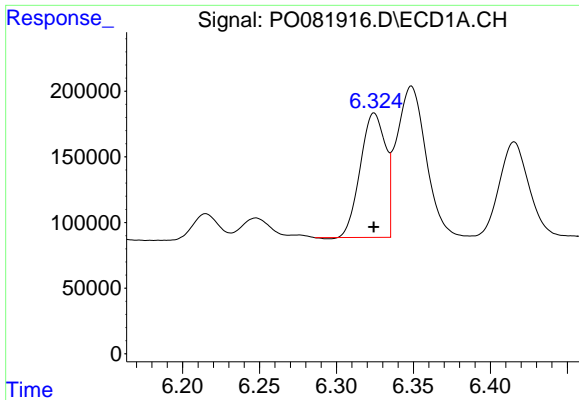
#1 Tetrachloro-m-xylene  
 R.T.: 3.979 min  
 Delta R.T.: -0.002 min  
 Response: 1333307  
 Conc: 52.69 ng/ml



#2 Decachlorobiphenyl  
 R.T.: 11.116 min  
 Delta R.T.: 0.006 min  
 Response: 3084345  
 Conc: 52.00 ng/ml



#2 Decachlorobiphenyl  
 R.T.: 9.310 min  
 Delta R.T.: -0.009 min  
 Response: 1212069  
 Conc: 51.31 ng/ml



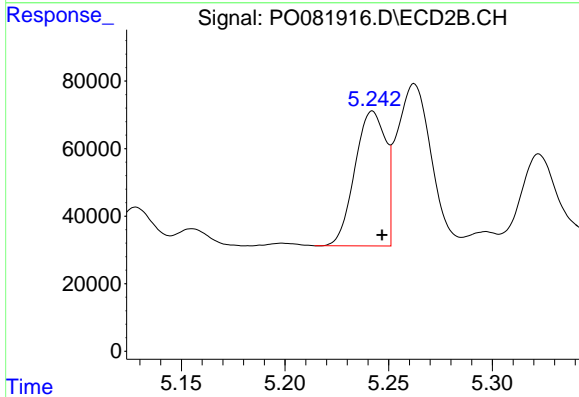
#16 AR-1242-1

R.T.: 6.324 min  
 Delta R.T.: 0.000 min  
 Response: 1076885  
 Conc: 523.65 ng/ml

Instrument :  
 ECD\_O  
 ClientSampled :  
 AR1242CCC500

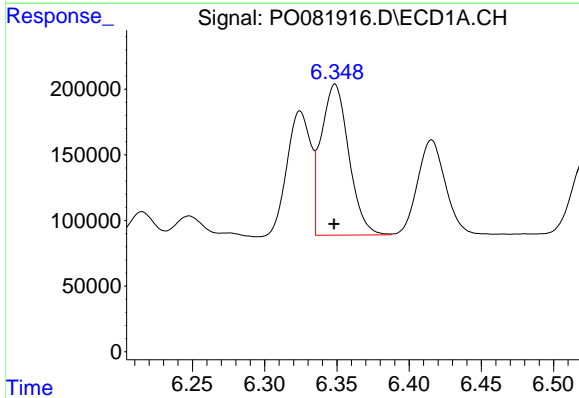
Manual Integrations  
 APPROVED

mohammad  
 10/12/2021 8:42:24 AM



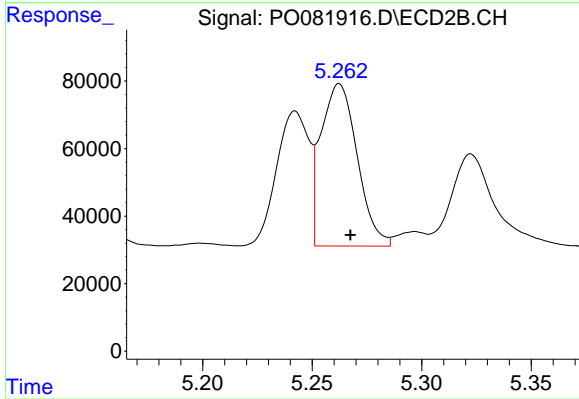
#16 AR-1242-1

R.T.: 5.242 min  
 Delta R.T.: -0.005 min  
 Response: 411184  
 Conc: 532.52 ng/ml



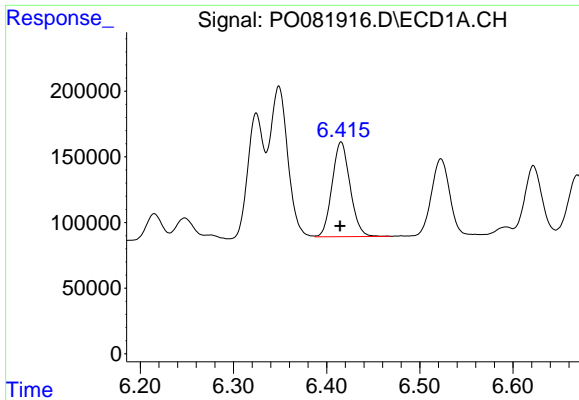
#17 AR-1242-2

R.T.: 6.349 min  
 Delta R.T.: 0.000 min  
 Response: 1531405  
 Conc: 522.44 ng/ml



#17 AR-1242-2

R.T.: 5.262 min  
 Delta R.T.: -0.005 min  
 Response: 554243  
 Conc: 524.95 ng/ml

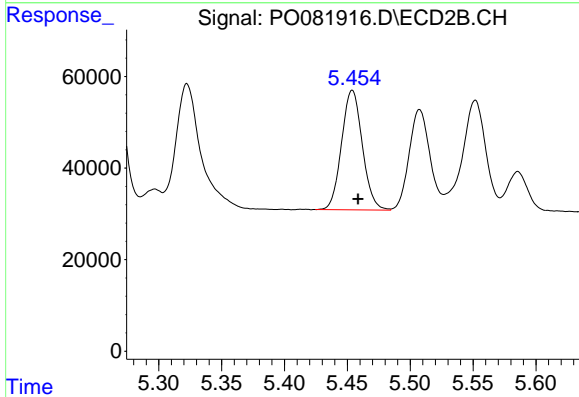


#18 AR-1242-3

R.T.: 6.416 min  
 Delta R.T.: 0.000 min  
 Response: 966700  
 Conc: 530.11 ng/ml

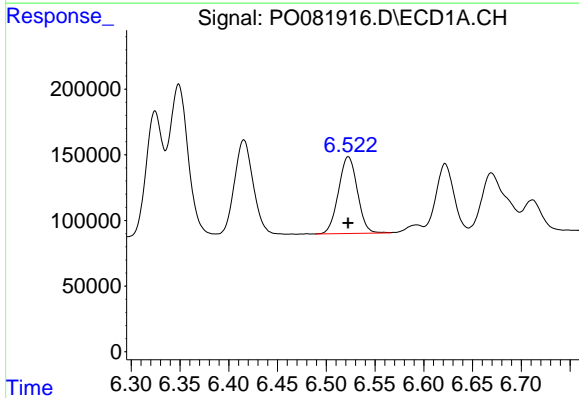
Instrument :  
 ECD\_O  
 ClientSampleId :  
 AR1242CCC500

Manual Integrations  
 APPROVED  
 mohammad  
 10/12/2021 8:42:24 AM



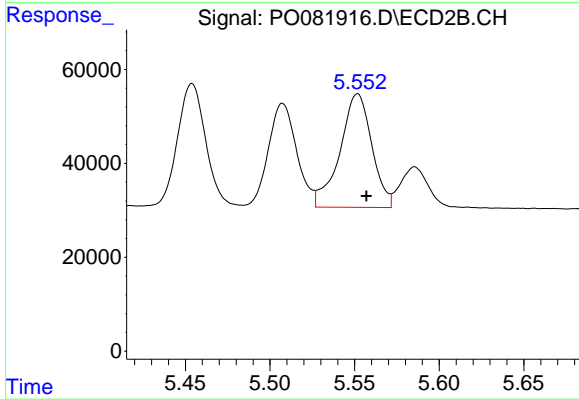
#18 AR-1242-3

R.T.: 5.454 min  
 Delta R.T.: -0.005 min  
 Response: 301259  
 Conc: 533.33 ng/ml



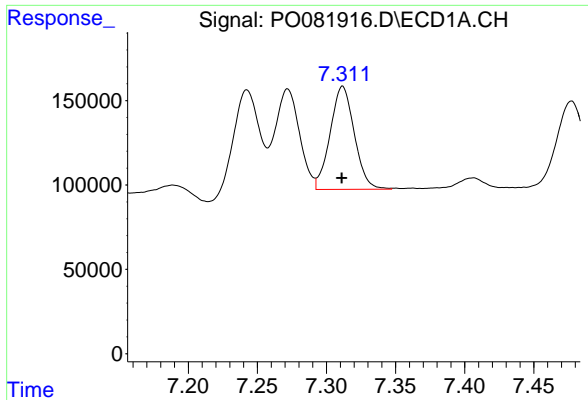
#19 AR-1242-4

R.T.: 6.523 min  
 Delta R.T.: 0.000 min  
 Response: 790005  
 Conc: 554.41 ng/ml



#19 AR-1242-4

R.T.: 5.552 min  
 Delta R.T.: -0.005 min  
 Response: 317168  
 Conc: 508.87 ng/ml



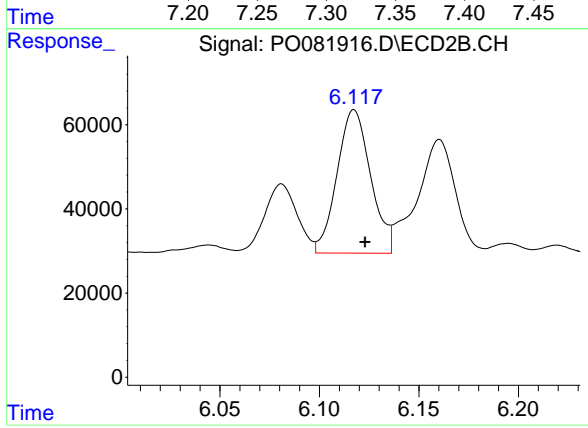
#20 AR-1242-5

R.T.: 7.311 min  
Delta R.T.: 0.000 min  
Response: 742588  
Conc: 508.70 ng/ml m

Instrument :  
ECD\_O  
ClientSampleId :  
AR1242CCC500

Manual Integrations  
APPROVED

mohammad  
10/12/2021 8:42:24 AM



#20 AR-1242-5

R.T.: 6.117 min  
Delta R.T.: -0.005 min  
Response: 400687  
Conc: 549.12 ng/ml