

Data Path : Z:\pestpcbsrv\HPCHEM1\ECD_O\Data\P0100923\
 Data File : P0098568.D
 Signal(s) : Signal #1: ECD1A.ch Signal #2: ECD2B.ch
 Acq On : 09 Oct 2023 09:31
 Operator : YP/AJ
 Sample : AR1660CCC500
 Misc :
 ALS Vial : 3 Sample Multiplier: 1

Instrument :
 ECD_O
ClientSampleId :
 AR1660CCC500

Integration File signal 1: autoint1.e
 Integration File signal 2: autoint2.e
 Quant Time: Oct 10 03:14:30 2023
 Quant Method : Z:\pestpcbsrv\HPCHEM1\ECD_O\methods\P0092723.M
 Quant Title : GC EXTRACTABLES
 QLast Update : Thu Sep 28 01:18:56 2023
 Response via : Initial Calibration
 Integrator: ChemStation

Volume Inj. : 2 µl
 Signal #1 Phase : ZB-MR1 Signal #2 Phase: ZB-MR2
 Signal #1 Info : 30Mx0.32mmx 0.50µ Signal #2 Info : 30M x 0.32mm x 0.25µm

Compound	RT#1	RT#2	Resp#1	Resp#2	ng/ml	ng/ml

System Monitoring Compounds						
1) SA Tetrachlo...	4.484	3.634	100.1E6	38442437	52.114	49.357
2) SA Decachlor...	10.305	8.643	62426738	24837335	51.428	46.359m
Target Compounds						
3) L1 AR-1016-1	5.661	4.718	29252193	12106278	541.269	507.213
4) L1 AR-1016-2	5.685	4.737	42718188	16864079	526.164	495.264
5) L1 AR-1016-3	5.746	4.912	26794962	9161467	535.547	509.293
6) L1 AR-1016-4	5.845	4.954	20801515	7518197	531.986	501.504
7) L1 AR-1016-5	6.141	5.167	21229677	9860734	516.274	507.751
31) L7 AR-1260-1	7.272	6.203	36298696	17675574	499.192	481.747
32) L7 AR-1260-2	7.530	6.391	42277221	20021416	513.442	477.149
33) L7 AR-1260-3	7.891	6.545	34571514	19006150	558.844	474.951
34) L7 AR-1260-4	8.117	7.017	39511497	14937372	586.114	463.849
35) L7 AR-1260-5	8.444	7.260	68517156	31940189	527.380	455.895

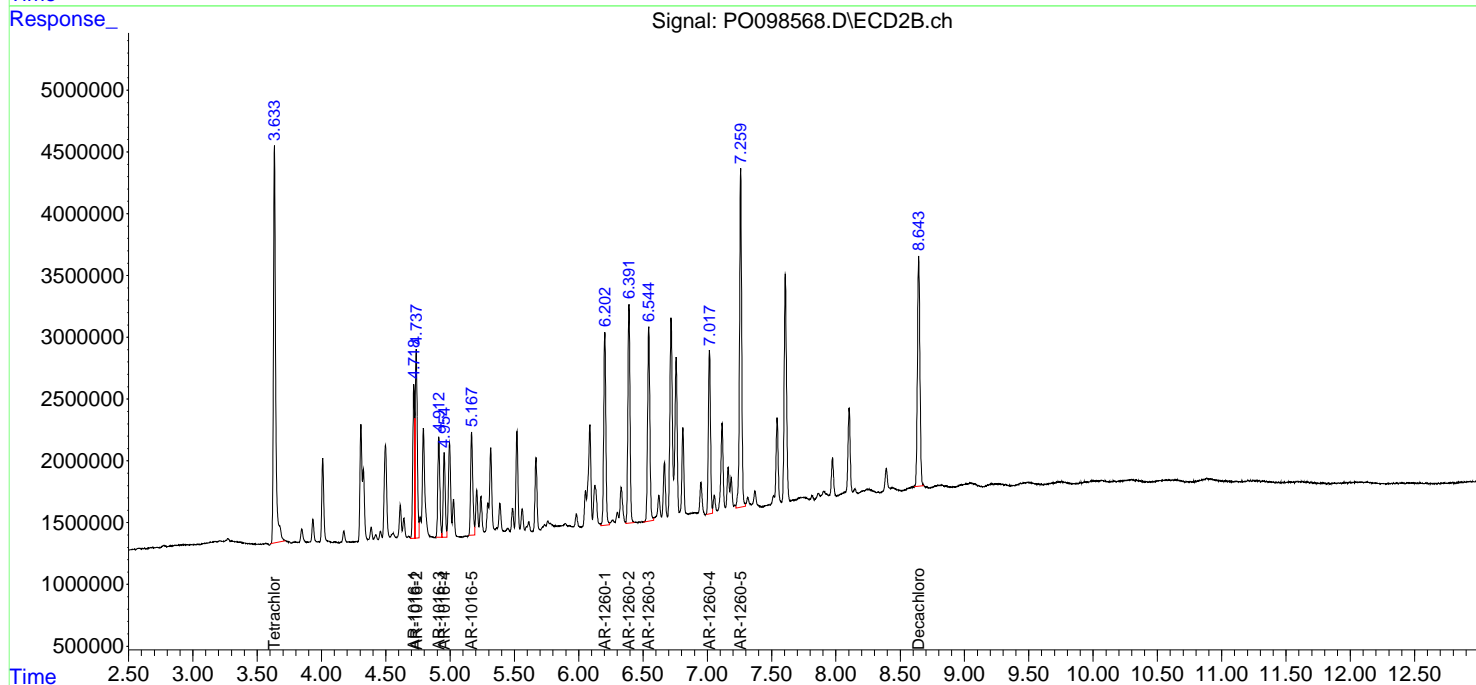
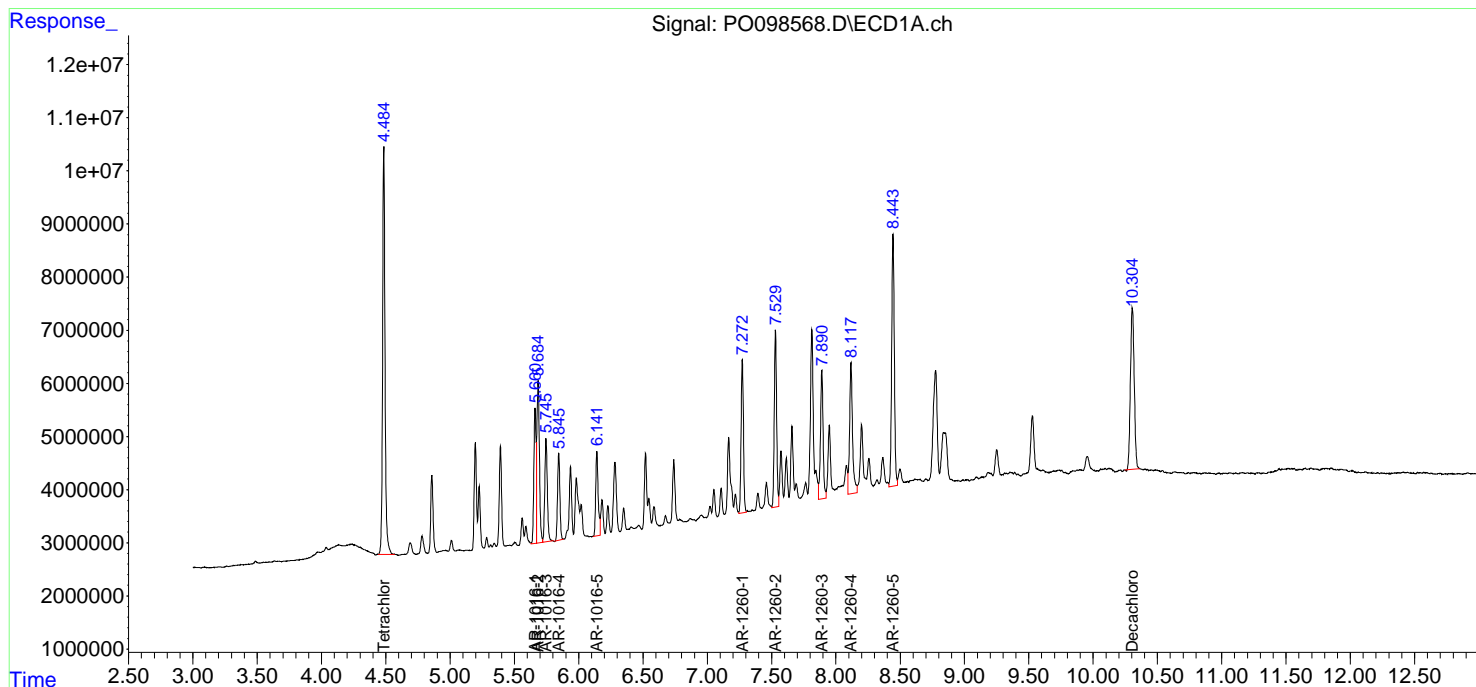
(f)=RT Delta > 1/2 Window (#)=Amounts differ by > 25% (m)=manual int.

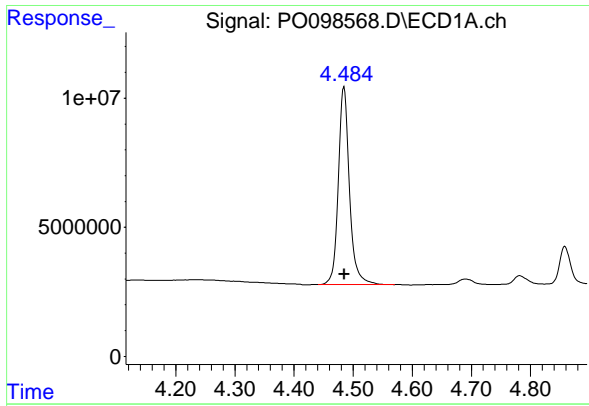
Data Path : Z:\pestpcbsrv\HPCHEM1\ECD_O\Data\PO100923\
 Data File : PO098568.D
 Signal(s) : Signal #1: ECD1A.ch Signal #2: ECD2B.ch
 Acq On : 09 Oct 2023 09:31
 Operator : YP/AJ
 Sample : AR1660CCC500
 Misc :
 ALS Vial : 3 Sample Multiplier: 1

Instrument :
 ECD_O
 ClientSampleId :
 AR1660CCC500

Integration File signal 1: autoint1.e
 Integration File signal 2: autoint2.e
 Quant Time: Oct 10 03:14:30 2023
 Quant Method : Z:\pestpcbsrv\HPCHEM1\ECD_O\methods\PO092723.M
 Quant Title : GC EXTRACTABLES
 QLast Update : Thu Sep 28 01:18:56 2023
 Response via : Initial Calibration
 Integrator: ChemStation

Volume Inj. : 2 µl
 Signal #1 Phase : ZB-MR1 Signal #2 Phase: ZB-MR2
 Signal #1 Info : 30Mx0.32mmx 0.50µm Signal #2 Info : 30M x 0.32mm x 0.25µm

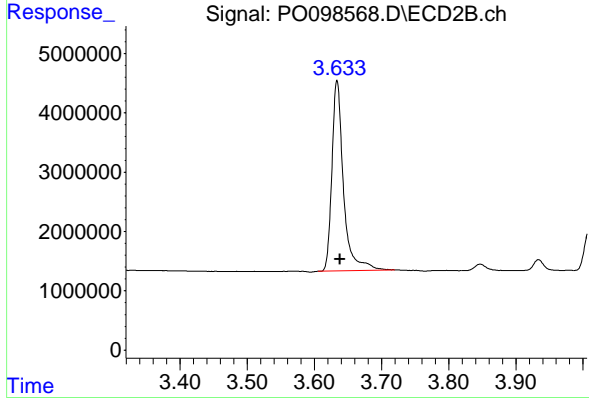




#1 Tetrachloro-m-xylene

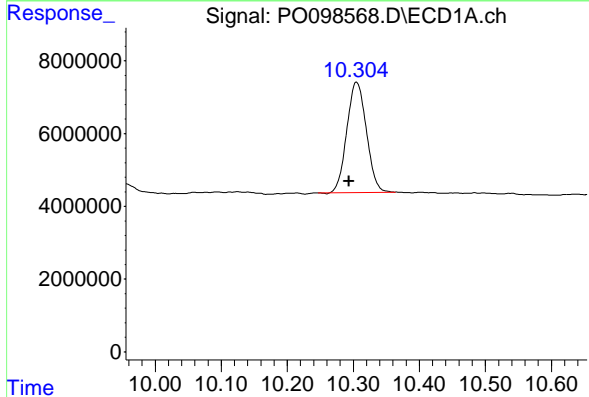
R.T.: 4.484 min
 Delta R.T.: 0.000 min
 Response: 100068411
 Conc: 52.11 ng/ml

Instrument :
 ECD_O
 ClientSampleId :
 AR1660CCC500



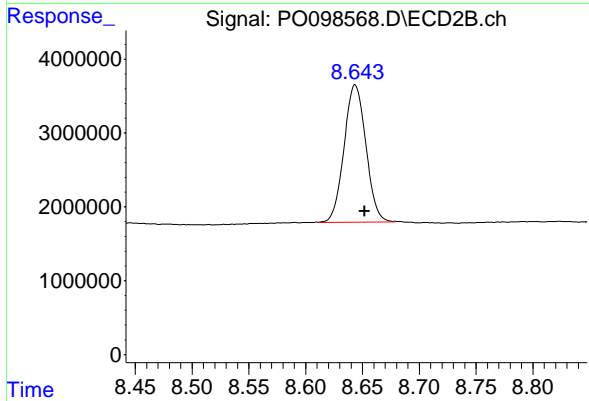
#1 Tetrachloro-m-xylene

R.T.: 3.634 min
 Delta R.T.: -0.004 min
 Response: 38442437
 Conc: 49.36 ng/ml



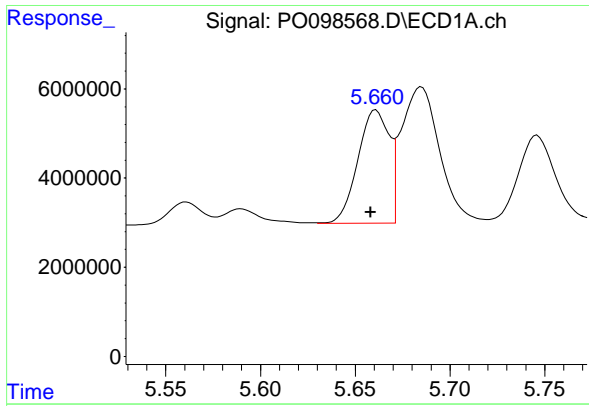
#2 Decachlorobiphenyl

R.T.: 10.305 min
 Delta R.T.: 0.011 min
 Response: 62426738
 Conc: 51.43 ng/ml



#2 Decachlorobiphenyl

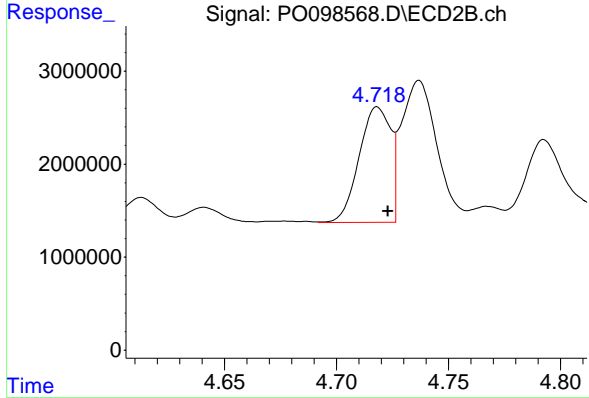
R.T.: 8.643 min
 Delta R.T.: -0.009 min
 Response: 24837335
 Conc: 46.36 ng/ml m



#3 AR-1016-1

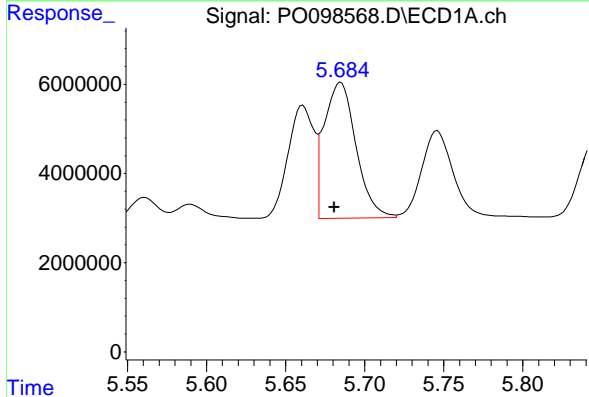
R.T.: 5.661 min
 Delta R.T.: 0.003 min
 Response: 29252193
 Conc: 541.27 ng/ml

Instrument :
 ECD_O
 ClientSampleId :
 AR1660CCC500



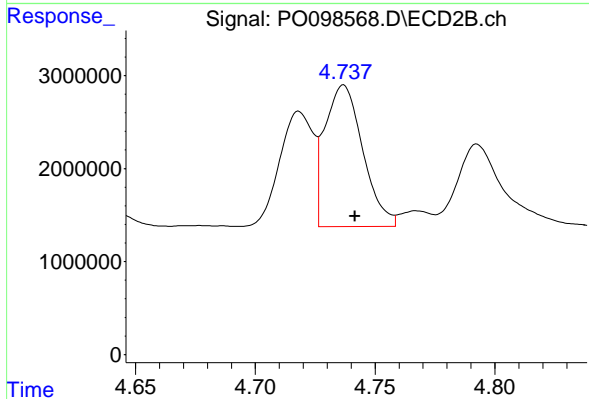
#3 AR-1016-1

R.T.: 4.718 min
 Delta R.T.: -0.005 min
 Response: 12106278
 Conc: 507.21 ng/ml



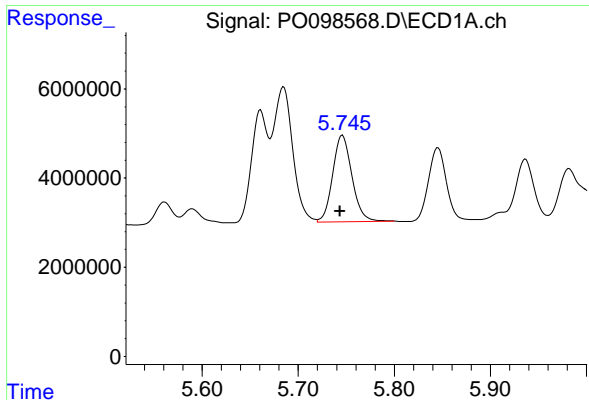
#4 AR-1016-2

R.T.: 5.685 min
 Delta R.T.: 0.004 min
 Response: 42718188
 Conc: 526.16 ng/ml



#4 AR-1016-2

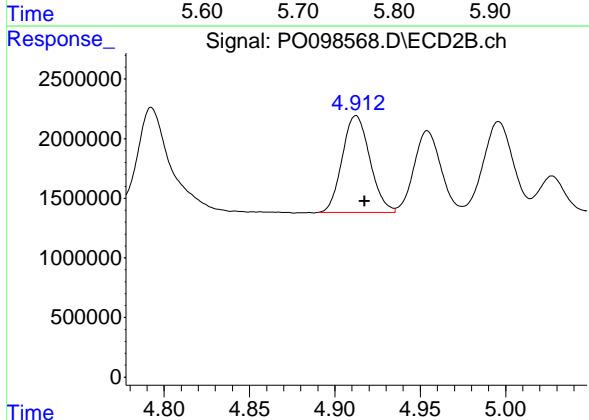
R.T.: 4.737 min
 Delta R.T.: -0.005 min
 Response: 16864079
 Conc: 495.26 ng/ml



#5 AR-1016-3

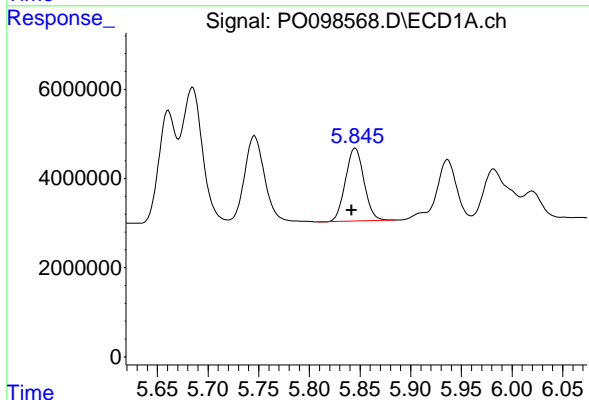
R.T.: 5.746 min
 Delta R.T.: 0.003 min
 Response: 26794962
 Conc: 535.55 ng/ml

Instrument :
 ECD_O
 ClientSampleId :
 AR1660CCC500



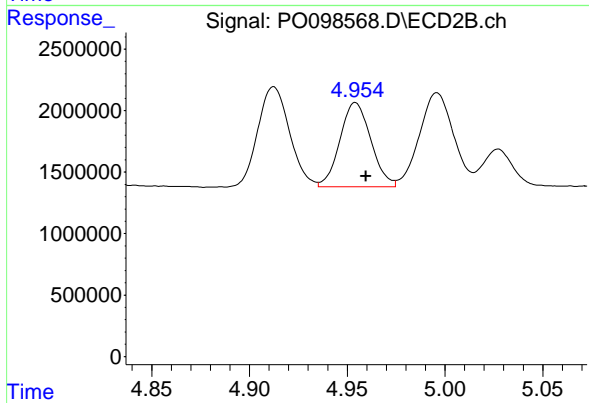
#5 AR-1016-3

R.T.: 4.912 min
 Delta R.T.: -0.005 min
 Response: 9161467
 Conc: 509.29 ng/ml



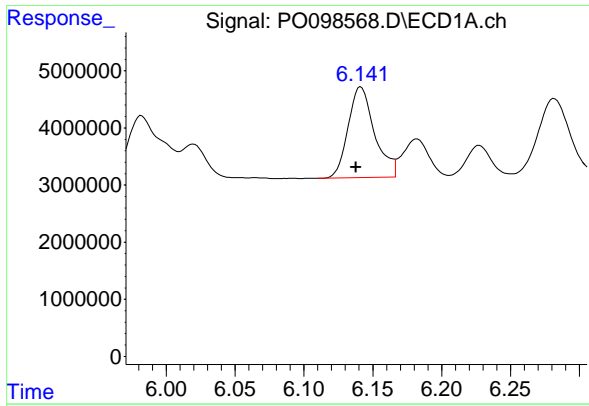
#6 AR-1016-4

R.T.: 5.845 min
 Delta R.T.: 0.004 min
 Response: 20801515
 Conc: 531.99 ng/ml



#6 AR-1016-4

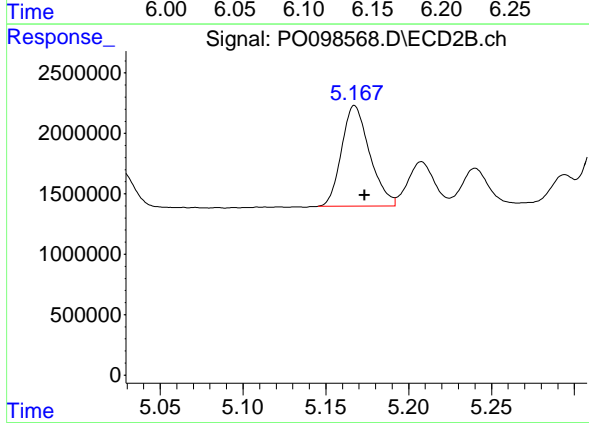
R.T.: 4.954 min
 Delta R.T.: -0.005 min
 Response: 7518197
 Conc: 501.50 ng/ml



#7 AR-1016-5

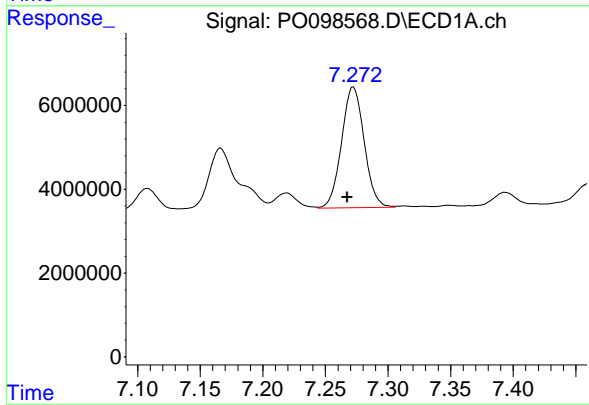
R.T.: 6.141 min
 Delta R.T.: 0.004 min
 Response: 21229677
 Conc: 516.27 ng/ml

Instrument :
 ECD_O
 ClientSampleId :
 AR1660CCC500



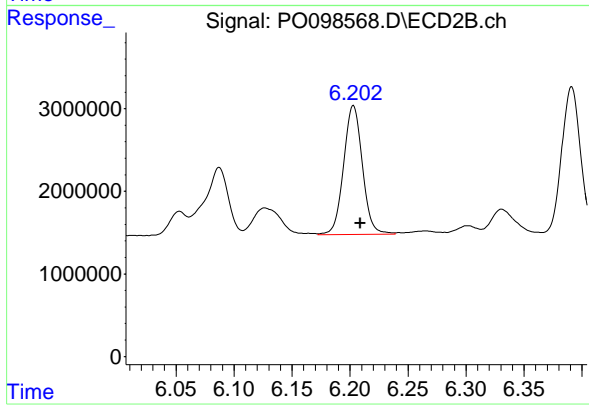
#7 AR-1016-5

R.T.: 5.167 min
 Delta R.T.: -0.006 min
 Response: 9860734
 Conc: 507.75 ng/ml



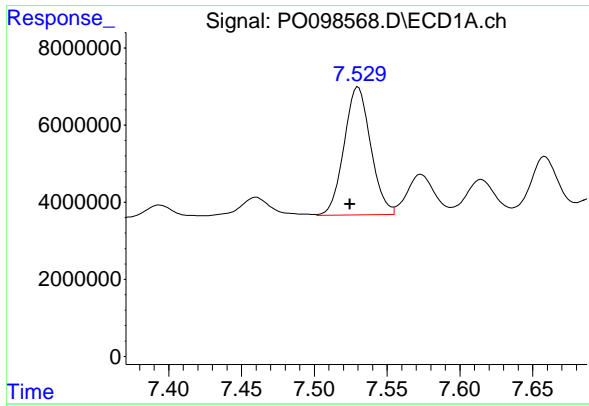
#31 AR-1260-1

R.T.: 7.272 min
 Delta R.T.: 0.005 min
 Response: 36298696
 Conc: 499.19 ng/ml



#31 AR-1260-1

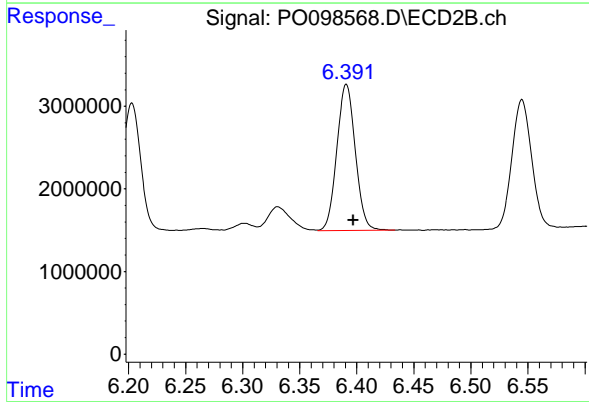
R.T.: 6.203 min
 Delta R.T.: -0.006 min
 Response: 17675574
 Conc: 481.75 ng/ml



#32 AR-1260-2

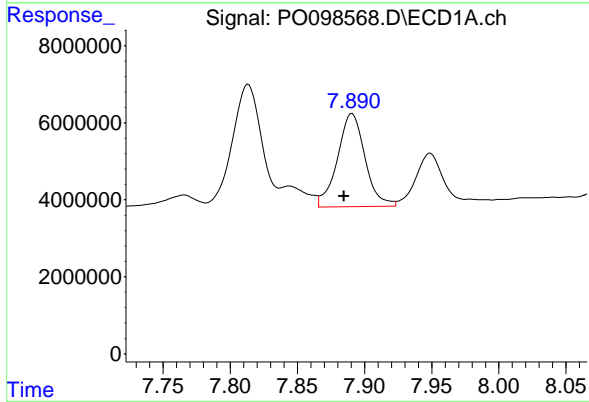
R.T.: 7.530 min
 Delta R.T.: 0.005 min
 Response: 42277221
 Conc: 513.44 ng/ml

Instrument :
 ECD_O
 ClientSampleId :
 AR1660CCC500



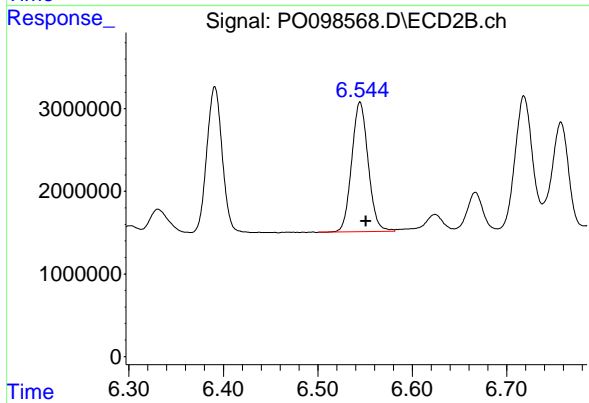
#32 AR-1260-2

R.T.: 6.391 min
 Delta R.T.: -0.006 min
 Response: 20021416
 Conc: 477.15 ng/ml



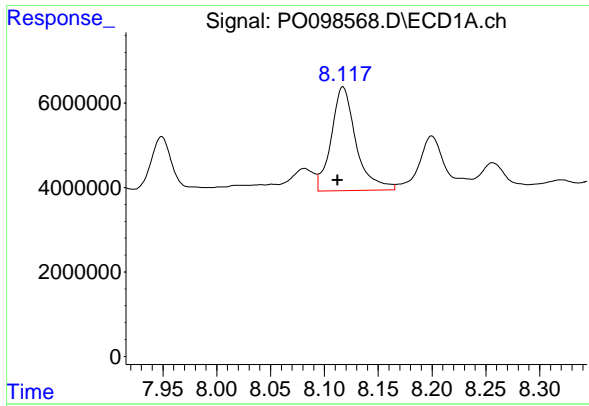
#33 AR-1260-3

R.T.: 7.891 min
 Delta R.T.: 0.006 min
 Response: 34571514
 Conc: 558.84 ng/ml



#33 AR-1260-3

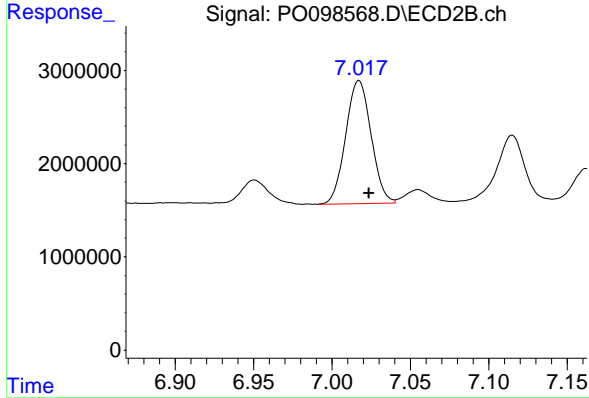
R.T.: 6.545 min
 Delta R.T.: -0.006 min
 Response: 19006150
 Conc: 474.95 ng/ml



#34 AR-1260-4

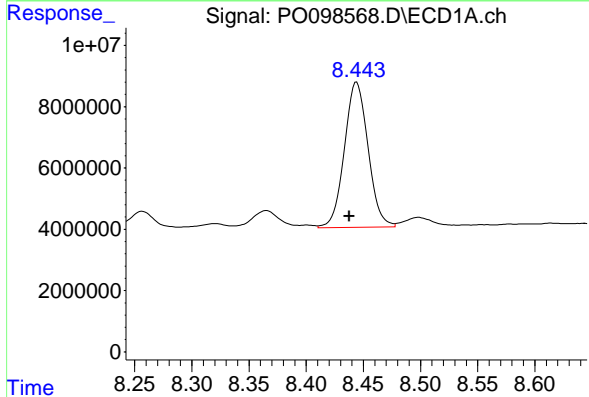
R.T.: 8.117 min
 Delta R.T.: 0.005 min
 Response: 39511497
 Conc: 586.11 ng/ml

Instrument :
 ECD_O
 ClientSampleId :
 AR1660CCC500



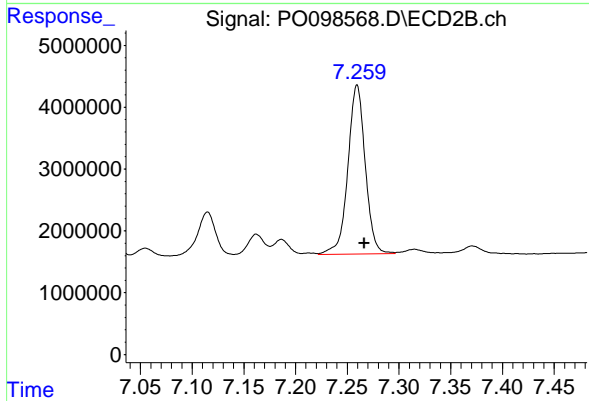
#34 AR-1260-4

R.T.: 7.017 min
 Delta R.T.: -0.006 min
 Response: 14937372
 Conc: 463.85 ng/ml



#35 AR-1260-5

R.T.: 8.444 min
 Delta R.T.: 0.006 min
 Response: 68517156
 Conc: 527.38 ng/ml



#35 AR-1260-5

R.T.: 7.260 min
 Delta R.T.: -0.007 min
 Response: 31940189
 Conc: 455.90 ng/ml